



## REGULAR BOARD MEETING

Keene-Riverview Elementary, MPR, 832 Park Avenue

Tuesday, December 27, 2016 07:00 PM

I. 6:00 p.m. - Call to Order

II. 6:00-7:00 p.m.- Executive Session: Review Complaints or Charges  
Against a Public Employee- RCW 42.30.110(1)(f)

III. 7:00 p.m. - Resume Regular Board Meeting

1. Pledge of Allegiance
2. Approval of Agenda
3. Communications

IV. Information Items:

1. PTA Update
2. Editorial Board Meetings:
  - Tri-City Herald - January 11, 2017 at 10:00 a.m.
  - Yakima Herald Republic - January 11, 2017 at 1:30 p.m.

V. Protocol for Addressing Board:

[Welcome to the Board Meeting \(p. 4\)](#)

VI. Hearing of Visitors:

VII. Reports:

1. Assistant Superintendent's Report
2. Business Manager's Report

[December 2016 Enrollment \(p. 5\)](#)

[September 2016 Financials \(p. 9\)](#)

3. **Superintendent's Report**
4. **Board Members' Reports**
5. **Student Representatives' Reports**

#### **VIII. Consent Items:**

1. **Certificated Personnel**

[Cert - December 27, 2016 \(p. 23\)](#)

2. **Classified Personnel**

[Class - December 27, 2016 \(p. 24\)](#)

3. **Approval of Minutes**

[Special Board Meeting - December 6, 2016 \(p. 25\)](#)

4. **Contracts and Personal Service Agreements**

[Contracts and PSA \(p. 32\)](#)

5. **Volunteer Coaches**

[Vol Coach \(p. 33\)](#)

#### **IX. Old Business:**

#### **X. Action Items:**

1. **Leadership WSSDA Participation for Scott Hunt**

[Leadership WSSDA \(p. 34\)](#)

2. **Consultant Agreement with Dr. Richard Cole for Psychological Services**

[Rick Cole Agreement \(p. 39\)](#)

3. **Vision Fillers, Inc. Service Agreement**

[Vision Fillers \(p. 41\)](#)

4. **Vouchers and Payroll**

[Vouchers Payable December 30, 2016 \(p. 45\)](#)

5. **Topp Productions DJ Services**

[DJ Services \(p. 87\)](#)

6. **Prosser PTA Donation to Prosser Heights Elementary**

[Prosser PTA Donation \(p. 91\)](#)

7. **ESD 105 Behavior School Implementation Agreement**

[ESD 105 Behavior Agreement \(p. 92\)](#)

**XI. Discussion Items:**

1. Legislative Conference - February 12 - 13, 2017

**XII. Adjournment:**

**XIII. Negotiations RCW 42.30.140 (4)**

**XIV. Future Meetings:**

- *Special Board Meeting, Review of Board Candidates, January 4, 2017, Staff Development Room, 6:00 p.m.*
- *Special Board Meeting, Interview of Board Candidates, January 5, 2017, Staff Development Room, 7:00 p.m.*
- *Regular Board Meeting, January 10, 2017, Keene-Riverview MPR, 7:00 p.m.*

# SCHOOL BOARD MEETINGS

Prosser School District No. 116 \* 1126 Meade Avenue, Suite A \* Prosser, WA 99350

## Welcome to a meeting of Prosser School District Board of Directors!

Your views and interest in education are important to us and to your schools. Whether your visit is for the purpose of bringing information to the board's attention, solving a problem, or simply to see what's going on, we hope you'll feel welcome and comfortable at this meeting. We also hope that you will leave with a better understanding of your school district and its board of directors.

### How the Board Operates

As the board meeting progresses, you may notice that there is quick action on some items. This is because the board generally considers an issue for several meetings before taking action, and also because background materials on the various items are sent to members for their careful study prior to the meeting. Sometimes the board will approve a motion that encompasses many items. These items, grouped under the "consent" portion of the agenda, are considered routine. You'll be able to follow the action more carefully if you pick up a copy of the agenda that is available.

Board members are: Peggy Douglas, President; Andy Howe, Vice-President; Dr. Warren Barmore and Scotty Hunt, Legislative representative. Student representatives are Lacey Desserault, Ali Cox and Liz Bender.

### About Board Meetings

Business meetings are held twice each month, usually on the 2nd and 4th Tuesdays. The first meeting of the month is also a time for the various educational programs of the district to provide an educational presentation to the Board. These meetings begin at 7:00 p.m.

The board encourages input on all issues under discussion at the business meetings.

### About Executive Sessions

The board may occasionally go into

executive session, thus excluding the public and the news media from witnessing the discussion. You should know though, that the board will only discuss issues in executive session. It must, by law, take all actions in an open meeting. The law also limits what the board can legally discuss in executive session. These closed discussions may only concern litigation, personnel selection or evaluation, negotiations, complaints against an officer or staff member or real estate transactions where public disclosure would be damaging to individuals or the general welfare of the district. Before going into executive session, the board president must estimate the time the board will return to open session.

### Study Sessions

Board Study Sessions are held by the board to address specific issues and to give the board an opportunity to have staff make presentations regarding specific areas of instruction or operation. Study sessions are open meetings and offer the community an opportunity to hear the issues being discussed. Study sessions follow the same protocols as regular board meetings for addressing the board with questions or concerns.

### Addressing the Board

You may present a concern to the board during the time reserved for hearing public comment. If this is the case we ask that you:

- Prior to the start of the meeting, sign in, noting the topic you intend to address to the board.
- Come to the microphone and state your name.
- Do not reflect adversely on the political or economic view, ethnic background, character or motives of any individual.
- Do keep your comments concise, non-emotional and brief.

The board is interested in hearing your concerns and your compliments too. It's best to call the superintendent's office a couple of days before the meeting. If this

isn't possible, you can ask the board president to recognize you during the hearing section.

### Board Hearings

The school board can be compared to a "court of last resort." If a concern cannot be solved by first talking with the teacher, principal, or appropriate district personnel, it may be forwarded to the board for hearing. Sometimes this hearing may be conducted in "executive session," meaning the public and the media are not in attendance.

### About Your Board

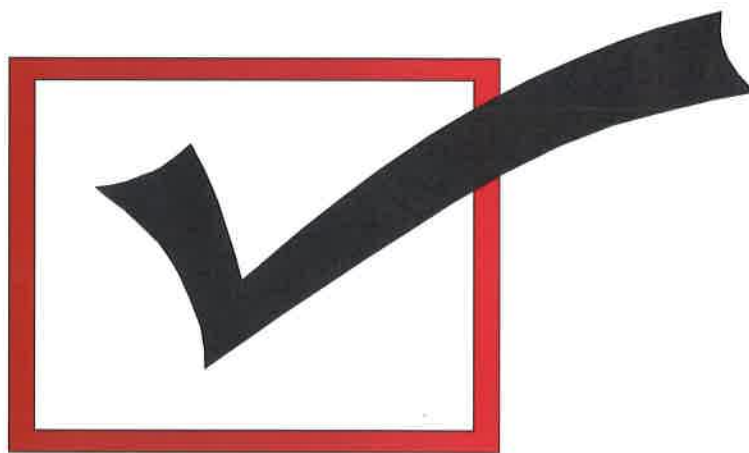
Public schools are especially close to the communities they serve because they are governed by men and women selected from the community. These men and women - your school board; are volunteers who spend a great deal of time on the many details involved in providing quality education.

Board members serve four-year terms. They are required to file financial disclosure statements with the Washington State Public Disclosure Commission and must be registered voters of the school district

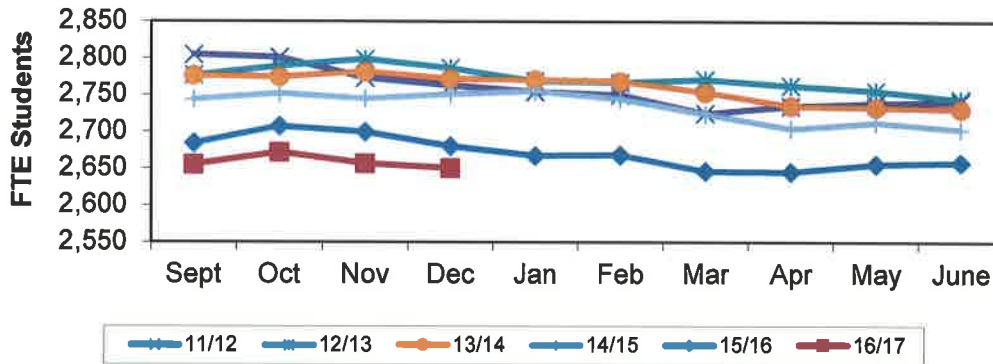
School board members attend meetings, keep communications open with other members of the community and represent the needs of the district before local, state and national representatives. They make critical decisions that have a direct impact on what children learn and how they learn it. However, a school board is a legal body and can only make decisions as a body.

You may notice that many of the decisions the board must make are not directly related to instruction. School board members are also responsible for keeping the buildings and grounds in good shape, balancing the budget, protecting the district's legal interests, and providing for long-range planning.

Student Enrollment  
for  
December 2016



### District Monthly Enrollment from 11/12 to 16/17

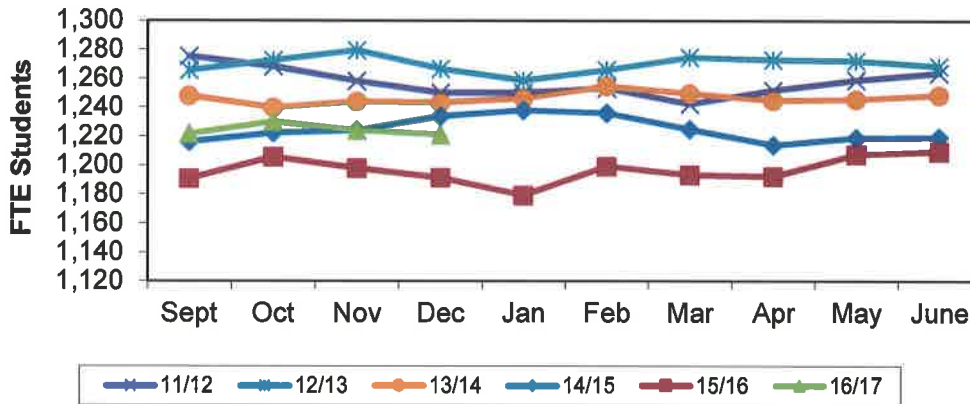


	Sept	Oct	Nov	Dec	Jan	Feb	Mar	Apr	May	June	Average
11/12	2,805	2,801	2,773	2,764	2,755	2,750	2,725	2,735	2,739	2,741	2,759
12/13	2,777	2,790	2,799	2,787	2,769	2,767	2,772	2,763	2,756	2,744	2,772
13/14	2,777	2,774	2,782	2,772	2,771	2,769	2,753	2,735	2,733	2,731	2,760
14/15	2,745	2,752	2,745	2,752	2,756	2,745	2,725	2,705	2,713	2,703	2,734
15/16	2,685	2,708	2,700	2,681	2,668	2,669	2,647	2,646	2,657	2,658	2,672
16/17	2,656	2,672	2,657	2,651							2,659

16/17 budget  
(Under) Over

2,605  
54

### Elementary Enrollment from 11/12 to 16/17

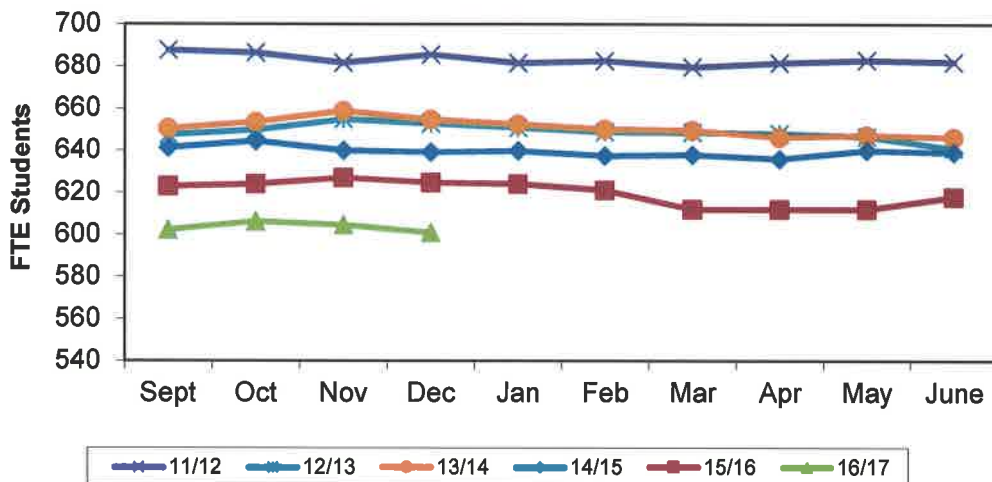


	Sept	Oct	Nov	Dec	Jan	Feb	Mar	Apr	May	June	Average
11/12	1,276	1,268	1,258	1,250	1,250	1,253	1,242	1,252	1,259	1,264	1,257
12/13	1,266	1,273	1,280	1,267	1,259	1,266	1,275	1,273	1,273	1,269	1,270
13/14	1,248	1,240	1,244	1,243	1,246	1,254	1,249	1,244	1,245	1,248	1,246
14/15	1,217	1,223	1,224	1,234	1,238	1,236	1,225	1,214	1,219	1,219	1,225
15/16	1,191	1,206	1,198	1,191	1,179	1,199	1,193	1,192	1,207	1,209	1,196
16/17	1,222	1,230	1,224	1,221							1,224

16/17 Bud  
(Under) Over

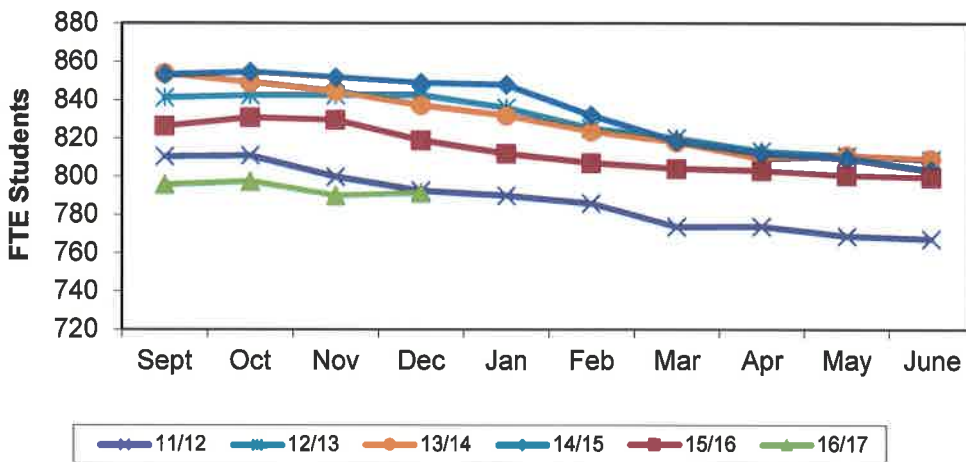
1,190  
34

### HMS Enrollment from 11/12 to 16/17



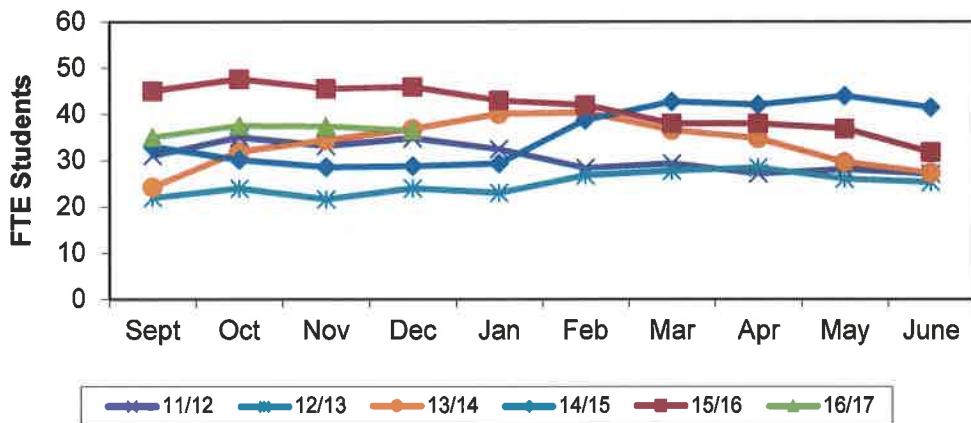
	Sept	Oct	Nov	Dec	Jan	Feb	Mar	Apr	May	June	Average
<b>11/12</b>	688	687	682	686	682	683	680	682	683	682	683
<b>12/13</b>	648	650	655	653	651	649	649	648	647	641	649
<b>13/14</b>	651	654	659	655	652	650	649	646	647	646	651
<b>14/15</b>	642	645	640	639	640	638	638	636	640	639	640
<b>15/16</b>	623	624	627	625	624	621	612	612	612	618	620
<b>16/17</b>	603	606	605	601							604
<b>16/17 Bud</b>											582
<b>(Under) Over</b>											22

### PHS Enrollment from 11/12 to 16/17



	Sept	Oct	Nov	Dec	Jan	Feb	Mar	Apr	May	June	Average
<b>11/12</b>	811	811	800	793	790	786	774	774	769	767	787
<b>12/13</b>	842	843	843	843	836	825	820	813	811	809	829
<b>13/14</b>	854	849	844	837	832	824	818	809	811	809	829
<b>14/15</b>	853	855	852	849	848	832	819	812	810	803	833
<b>15/16</b>	826	831	830	819	812	807	804	803	801	800	813
<b>16/17</b>	796	798	790	792							794
<b>16/17 Bud</b>											797
<b>(Under) Over</b>											(3)

### Prosser Falls Enrollment from 11/12 to 16/17

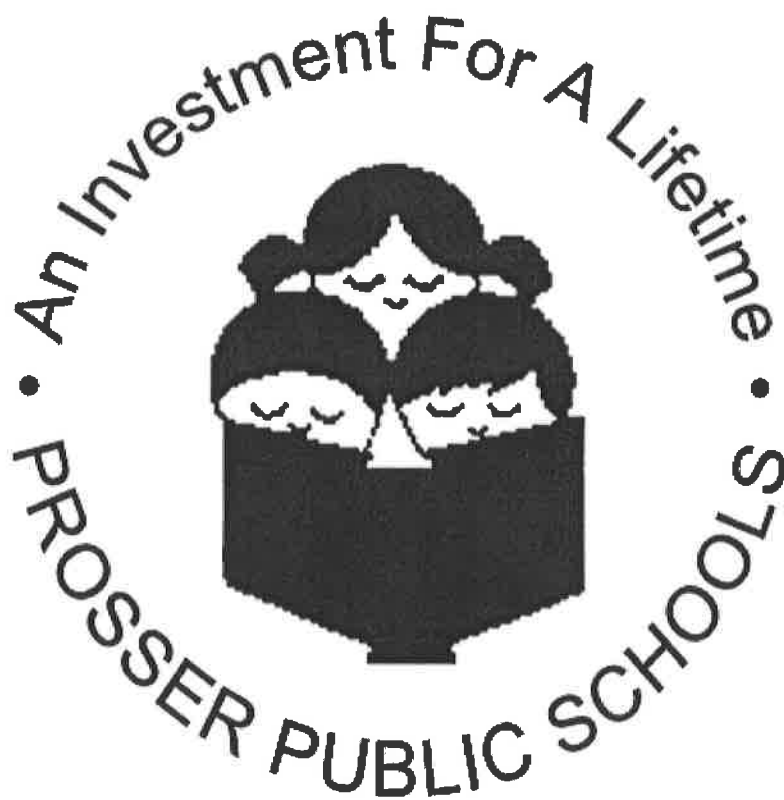


	<i>Sept</i>	<i>Oct</i>	<i>Nov</i>	<i>Dec</i>	<i>Jan</i>	<i>Feb</i>	<i>Mar</i>	<i>Apr</i>	<i>May</i>	<i>June</i>	<i>Average</i>
<b>11/12</b>	31	35	33	35	33	28	29	27	28	27	31
<b>12/13</b>	22	24	22	24	23	27	28	28	26	25	25
<b>13/14</b>	24	32	34	37	40	40	37	35	30	27	34
<b>14/15</b>	33	30	29	29	29	39	43	42	44	42	36
<b>15/16</b>	45	48	46	46	43	42	38	38	37	32	41
<b>16/17</b>	35	38	37	37							37
<b>16/17 Bud</b>											36
<b>(Under) Over</b>											1

\* not including students in the after school credit retrieval program



# September 2016 Financial Reports



PROSSER SCHOOL DISTRICT NO.116

2016-2017 Budget Status Report

10--General Fund-- FUND BALANCE -- AGENCY ACCOUNTS -- Original -- BUDGET-STATUS-REPORT

Fiscal Year 2016 (September 1, 2016 - August 31, 2017)

For the PROSSER SCHOOL DISTRICT NO.116 School District for the Month of September, 2016

	ANNUAL BUDGET	ACTUAL FOR MONTH	ACTUAL FOR YEAR	ENCUMBRANCES	BALANCE	PERCENT
<b>A. REVENUES/OTHER FIN. SOURCES</b>						
1000 LOCAL TAXES	4,023,238	38,548.54	38,548.54		3,984,689.46	0.96
2000 LOCAL SUPPORT NONTAX	377,614	16,891.56	16,891.56		360,722.44	4.47
3000 STATE, GENERAL PURPOSE	19,828,805	1,598,186.40	1,598,186.40		18,230,618.60	8.06
4000 STATE, SPECIAL PURPOSE	6,170,518	403,367.21	403,367.21		5,767,150.79	6.54
5000 FEDERAL, GENERAL PURPOSE	60,000	.00	.00		60,000.00	0.00
6000 FEDERAL, SPECIAL PURPOSE	2,939,882	9,229.24	9,229.24		2,930,652.76	0.31
7000 REVENUES FR OTH SCH DIST	20,000	6,335.10	6,335.10		13,664.90	31.68
8000 OTHER AGENCIES AND ASSOCIATES	0	465.16	465.16		465.16-	0.00
9000 OTHER FINANCING SOURCES	0	.00	.00		.00	0.00
<b>Total REVENUES/OTHER FIN. SOURCES</b>	<b>33,420,057</b>	<b>2,073,023.21</b>	<b>2,073,023.21</b>		<b>31,347,033.79</b>	<b>6.20</b>
<b>B. EXPENDITURES</b>						
00 Regular Instruction	17,756,543	1,611,774.90	1,611,774.90	13,323,346.03	2,821,422.07	84.11
10 Federal Stimulus	0	.00	.00	0.00	.00	0.00
20 Special Ed Instruction	3,657,178	274,653.35	274,653.35	2,527,274.36	855,250.29	76.61
30 Voc. Ed Instruction	1,087,143	94,601.90	94,601.90	863,144.68	129,396.42	88.10
40 Skills Center Instruction	0	.00	.00	0.00	.00	0.00
50+60 Compensatory Ed Instruct.	3,560,576	234,757.59	234,757.59	1,996,677.04	1,329,141.37	62.67
70 Other Instructional Pgms	88,063	5,528.74	5,528.74	50,693.71	31,840.55	63.84
80 Community Services	81,219	.00	.00	0.00	81,219.00	0.00
90 Support Services	7,582,384	730,443.89	730,443.89	3,876,649.02	2,975,291.09	60.76
<b>Total EXPENDITURES</b>	<b>33,813,106</b>	<b>2,951,760.37</b>	<b>2,951,760.37</b>	<b>22,637,784.84</b>	<b>8,223,560.79</b>	<b>75.68</b>
C. OTHER FIN. USES TRANS. OUT (GL 536)	0	.00	.00			
D. OTHER FINANCING USES (GL 535)	0	.00	.00			
<b>E. EXCESS OF REVENUES/OTHER FIN. SOURCES</b>						
OVER(UNDER)EXP/OTH FIN USES (A-B-C-D)	393,049-	878,737.16-	878,737.16-		485,688.16-	123.57
F. TOTAL BEGINNING FUND BALANCE	2,665,000		3,183,457.04			
G. G/L 898 PRIOR YEAR ADJUSTMENTS(+OR-)	XXXXXXXX		.00			
H. TOTAL ENDING FUND BALANCE	2,271,951		2,304,719.88			
(E+F + OR - G)						
<b>I. ENDING FUND BALANCE ACCOUNTS:</b>						
G/L 810 Restricted For Other Items	0		.00			
G/L 815 Restrict Unequalized Deduct Rev	0		.00			
G/L 821 Restrictd for Carryover	83,000		125,989.61			
G/L 825 Restricted for Skills Center	0		.00			
G/L 828 Restricted for C/O of FS Rev	0		.00			
G/L 830 RESERVE FOR DEBT	0		.00			
G/L 835 Restrictd For Arbitrage Rebate	0		.00			
G/L 840 Nonspnd FB - Invent/Prepd Itms	66,000		69,712.31			
G/L 845 Restricted for Self-Insurance	0		.00			
G/L 850 Restricted for Uninsured Risks	0		.00			
G/L 870 Committed to Other Purposes	0		.00			
G/L 872 Committd to Econmc Stabilizatr	0		.00			
G/L 875 Assigned Contingencies	0		.00			
G/L 884 Assigned to Other Cap Projects	0		.00			
G/L 888 Assigned to Other Purposes	0		.00			
G/L 890 Unassigned Fund Balance	2,122,951		2,109,017.96			
G/L 891 Unassigned Min Fnd Bal Policy	0		.00			
<b>TOTAL</b>	<b>2,271,951</b>		<b>2,304,719.88</b>			

**PROSSER SCHOOL DISTRICT NO.116**  
**Balance Sheet**  
**General Fund (10)**  
**September 30, 2016**

GL	Description	Balance
200	Imprest Cash	10,000.00
230	Cash on Hand	-64.00
240	Cash on Deposit with County	3,306,073.41
241	Warrants Outstanding	-1,092,442.65
310	Taxes Receivable	1,790,676.40
320	Due from Other Funds	12,796.00
330	Due from Other Govt Units	65,930.18
340	Accounts Receivable	2,678.00
420	Inventory-Lunchrooms	5,466.05
430	Prepaid Items	0.00
450	Investments	0.00
---	Asset	4,101,113.39
601	Accounts Payable	-5,581.11
605	Accrued Salaries	0.00
610	Payroll Ded and Taxes Payable	0.00
640	Due to Other Funds	-136.00
750	Unavailable Revenue	0.00
760	Unavailable Taxes Receivable	-1,790,676.40
---	Liability	-1,796,393.51
821	Restricted for C/O Revenues	-125,989.61
840	Nonspendable Fund Balance	-69,712.31
890	Unassigned Fund Balance	-2,109,017.96
---	Equity	-2,304,719.88
---	General Fund	0.00

**PROSSER SCHOOL DISTRICT NO. 116  
Expenditures by Object - Comparative  
September 2016**

	2015-16			2016-17			
	September YTD	Y.E. Actual	YTD Expend as a % of Y.E.	September YTD	Budget	YTD Expend as a % of Bud	
0 Debit Transfer	\$9,258	\$150,104	6.17%	\$10,174	\$165,046	6.16%	
1 Credit Transfer	(9,258)	(150,104)	6.17%	(10,174)	(165,046)	6.16%	
2 Salaries - Certificated	1,300,954	13,392,893	9.71%	1,275,112	13,260,184	9.62%	
3 Salaries - Classified	433,811	5,597,538	7.75%	469,242	5,807,764	8.08%	
4 Employee Benefits	673,108	7,864,848	8.56%	692,388	8,328,591	8.31%	
5 Supplies	194,482	2,458,004	7.91%	195,686	2,575,929	7.60%	
7 Contract Services	316,840	2,793,136	11.34%	308,153	3,646,099	8.45%	*
8 Travel	275	120,644	0.23%	1,747	68,275	2.56%	
9 Capital Outlay	0	195,130	0.00%	9,433	126,264	7.47%	
	<u>\$2,919,471</u>	<u>\$32,422,193</u>	<u>9.00%</u>	<u>\$2,951,760</u>	<u>\$33,813,106</u>	<u>8.73%</u>	

\* Object 7 Contract Services - Budget includes Grant Reserve of \$650,000  
Without these reserves the YTD % would be 10.3%

**PROSSER SCHOOL DISTRICT NO. 116**  
**Expenditures by Program - Comparative**  
**September 2016**

		2015-16			2016-17			
		September YTD	Y.E. Actual	YTD Expend as a % of Y.E.	September YTD	Budget	YTD Expend as a % of Bud	
01	Basic Education	\$1,674,483	\$17,477,707	9.58%	\$1,611,775	\$17,756,543	9.08%	
21	Special Ed, State	227,748	2,816,951	8.08%	230,953	2,977,193	7.76%	
22	Special Ed. Infants & Tdlrs	8,427	133,040	6.33%	8,700	161,306	5.39%	
24	Special Ed, Fed	34,041	536,901	6.34%	35,000	518,679	6.75%	
31	Vocational, State	92,100	1,133,765	8.12%	94,602	1,066,355	8.87%	
38	Vocational, Fed	0	21,042	0.00%	0	20,788	0.00%	
51	Title I Part A	43,896	594,500	7.38%	57,072	697,359	8.18%	
52	Sch Im Fed	9,833	81,909	12.00%	4,527	90,511	5.00%	
53	Migrant, Fed	17,120	411,773	4.16%	25,831	377,112	6.85%	
55	Learning Assistance	69,937	885,187	7.90%	73,522	869,457	8.46%	
58	Special & Pilot Prgm	5,411	189,922	2.85%	17,008	203,419	8.36%	TPEP, National Cert Bonus
58	Grant Contingency	0	0	0.00%	0	650,000	0.00%	
64	Ltd English Proficiency	10,833	129,321	8.38%	5,292	89,123	5.94%	
65	Transit. Biling., State	46,931	629,560	7.45%	51,506	583,594	8.83%	
71	Traffic Safety	1,940	50,487	3.84%	2,087	56,497	3.69%	
74	Highly Capable	2,103	26,552	7.92%	2,103	26,566	7.91%	
79	Other Instruct.	796	10,945	7.27%	1,339	5,000	26.77%	GEARUP (all reimbursed)
89	Other Community Service	0	41,706	0.00%	0	81,219	0.00%	Summer Food Service Program, Year End Transportation Adjustment
97	District-Wide Support	486,474	4,785,219	10.17%	509,216	4,927,116	10.33%	
98	Food Service	76,639	1,288,917	5.95%	102,021	1,354,617	7.53%	
99	Pupil Transportation	110,760	1,176,792	9.41%	119,207	1,300,651	9.17%	
		<u>\$2,919,471</u>	<u>\$32,422,193</u>	<u>9.00%</u>	<u>\$2,951,760</u>	<u>\$33,813,106</u>	<u>8.73%</u>	

**PROSSER SCHOOL DISTRICT NO. 116**  
**Expenditures by Activity - Comparative**  
**September 2016**

	2015-16			2016-17			
	September YTD	Y.E. Actual	YTD Expend as a % of Y.E.	September YTD	Budget	YTD Expend as a % of Bud	
11 Board - Supplies	\$10	\$828	1.24%	\$99	\$700	14.21%	Mugs and name badges
11 Board - Legal fees	0	75,101	0.00%	0	60,000	0.00%	
11 Board - Audit, bargaining, elections, etc.	1,987	45,077	4.41%	3,547	73,500	4.83%	WASA \$2,047, GAP Training \$1,500
11 Board - Travel	0	4,453	0.00%	0	4,000	0.00%	
12 Superintendent's Office	30,322	360,813	8.40%	29,529	359,229	8.22%	
13 Business Office	49,410	578,032	8.55%	44,422	587,482	7.56%	
14 Human Resources	5,265	73,661	7.15%	6,508	73,835	8.81%	
15 Communications Consultant	417	2,500	16.67%	0	0	0.00%	
21 Supervision	54,736	780,939	7.01%	63,304	762,139	8.31%	
22 Learning Resources	26,808	286,950	9.34%	27,111	310,721	8.73%	
23 Principal	181,415	2,323,826	7.81%	187,473	2,372,242	7.90%	
24 Guidance & Counseling	76,129	782,119	9.73%	88,045	853,071	10.32%	
25 Pupil Management/Safety	20,033	364,539	5.50%	28,037	376,091	7.45%	
26 Health Services	84,397	1,245,862	6.77%	80,857	1,372,837	5.89%	
27 Teaching	1,607,330	17,662,959	9.10%	1,576,921	18,161,046	8.68%	Budget includes \$600,000 grant reserve
28 Extracurricular	49,547	514,190	9.64%	50,873	614,962	8.27%	
31 Professional Development	135,200	1,115,254	12.12%	110,204	921,894	11.95%	
32 Instructional Technology	10,001	17,429	57.38%	8,657	17,658	49.02%	Technology Resource Teachers
33 Curriculum	0	48,829	0.00%	0	416,928	0.00%	
41 Food Service Supervision	5,076	64,250	7.90%	5,273	67,214	7.85%	
42 Food	24,902	577,109	4.31%	47,868	666,500	7.18%	
44 Food Service Operations	46,661	702,293	6.64%	48,879	738,719	6.62%	
49 Food Service Transfers	0	(25,315)	0.00%	0	(61,596)	0.00%	
51 Transportation Supervision	11,507	143,963	7.99%	11,411	144,630	7.89%	
52 Operating Buses	57,875	846,529	6.84%	63,152	971,137	6.50%	
53 Maintenance of Buses	15,604	269,403	5.79%	14,426	237,246	6.08%	
58 Transportation Insurance	35,033	40,974	85.50%	40,226	48,000	87.45%	
59 Transportation Transfers	(9,258)	(124,017)	7.47%	(10,174)	(103,450)	9.83%	
61 Maintenance Supervision	9,115	117,862	7.73%	9,464	119,561	7.92%	
62 Maintenance-Grounds	19,346	275,565	7.02%	19,559	232,948	8.40%	
63 Plant Operations-Custodial	76,138	1,119,727	6.80%	84,479	1,171,184	7.21%	
64 Maint Plant/Equipment	26,673	442,973	6.02%	28,460	473,043	6.02%	
65 Utilities	19,784	642,032	3.08%	1,949	728,000	0.27%	
68 Insurance	190,974	195,974	97.45%	197,245	215,000	91.74%	
72 Technology - Salary/Benefits	20,000	263,555	7.59%	22,625	272,079	8.32%	
72 Technology - Supplies	29,580	202,097	14.64%	58,189	208,800	26.91%	
72 Technology - Contract Services	1,431	139,739	1.02%	4,037	137,100	2.94%	
72 Technology - Travel	0	5,566	0.00%	79	4,000	1.97%	
72 Technology - Capital Outlay	0	0	0.00%	0	26,264	0.00%	
72 Technology - ERATE	0	164,846	0.00%	0	107,391	0.00%	
73 Printing	6,022	60,840	9.90%	932	60,000	1.55%	
75 District Motor Pool	0	12,864	0.00%	93	13,000	0.72%	
	<u>\$2,919,471</u>	<u>\$32,422,193</u>	<u>9.00%</u>	<u>\$2,951,760</u>	<u>\$33,813,106</u>	<u>8.73%</u>	

PROSSER SCHOOL DISTRICT NO.116

2016-2017 Budget Status Report

20--Capital Projects-- FUND BALANCE -- AGENCY ACCOUNTS -- Original -- BUDGET-STATUS-REPORT

Fiscal Year 2016 (September 1, 2016 - August 31, 2017)

For the PROSSER SCHOOL DISTRICT NO.116 School District for the Month of September, 2016

	ANNUAL BUDGET	ACTUAL FOR MONTH	ACTUAL FOR YEAR	ENCUMBRANCES	BALANCE	PERCENT
<b>A. REVENUES/OTHER FIN. SOURCES</b>						
1000 Local Taxes	0	.00	.00		.00	0.00
2000 Local Support Nontax	12,010	1,754.02	1,754.02		10,255.98	14.60
3000 State, General Purpose	0	.00	.00		.00	0.00
4000 State, Special Purpose	0	.00	.00		.00	0.00
5000 Federal, General Purpose	0	.00	.00		.00	0.00
6000 Federal, Special Purpose	0	.00	.00		.00	0.00
7000 Revenues Fr Oth Sch Dist	0	.00	.00		.00	0.00
8000 Other Agencies and Associates	0	.00	.00		.00	0.00
9000 Other Financing Sources	0	.00	.00		.00	0.00
<u>Total REVENUES/OTHER FIN. SOURCES</u>	12,010	1,754.02	1,754.02		10,255.98	14.60
<b>B. EXPENDITURES</b>						
10 Sites	0	.00	.00	0.00	.00	0.00
20 Buildings	0	.00	.00	0.00	.00	0.00
30 Equipment	12,000	.00	.00	0.00	12,000.00	0.00
40 Energy	0	.00	.00	0.00	.00	0.00
50 Sales & Lease Expenditure	0	.00	.00	0.00	.00	0.00
60 Bond Issuance Expenditure	0	.00	.00	0.00	.00	0.00
90 Debt	0	.00	.00	0.00	.00	0.00
<u>Total EXPENDITURES</u>	12,000	.00	.00	0.00	12,000.00	0.00
<b>C. OTHER FIN. USES TRANS. OUT (GL 536)</b>						
	0	.00	.00			
<b>D. OTHER FINANCING USES (GL 535)</b>						
	0	.00	.00			
<b>E. EXCESS OF REVENUES/OTHER FIN.SOURCES</b>						
<u>OVER(UNDER)EXP/OTH FIN USES (A-B-C-D)</u>	10	1,754.02	1,754.02		1,744.02	> 1000
<b>F. TOTAL BEGINNING FUND BALANCE</b>						
	50		62.04			
<b>G. G/L 898 PRIOR YEAR ADJUSTMENTS(+OR-)</b>						
	XXXXXXXX		.00			
<b>H. TOTAL ENDING FUND BALANCE</b>						
	60		1,816.06			
<u>(E+F + OR - G)</u>						
<b>I. ENDING FUND BALANCE ACCOUNTS:</b>						
G/L 810 Restricted For Other Items	0		.00			
G/L 825 Restricted for Skills Center	0		.00			
G/L 830 Restricted for Debt Service	0		.00			
G/L 835 Restrictd For Arbitrage Rebate	0		.00			
G/L 840 Nonspnd FB - Invent/Prepd Itms	0		.00			
G/L 850 Restricted for Uninsured Risks	0		.00			
G/L 861 Restricted from Bond Proceeds	0		.00			
G/L 862 Committed from Levy Proceeds	0		.00			
G/L 863 Restricted from State Proceeds	0		.00			
G/L 864 Restricted from Fed Proceeds	0		.00			
G/L 865 Restricted from Other Proceeds	0		62.04			
G/L 866 Restrictd from Impact Proceeds	0		.00			
G/L 867 Restricted from Mitigation Fees	0		.00			
G/L 869 Restricted fr Undistr Proceeds	0		.00			
G/L 870 Committed to Other Purposes	0		.00			
G/L 889 Assigned to Fund Purposes	60		1,754.02			
G/L 890 Unassigned Fund Balance	0		.00			
<u>TOTAL</u>	60		1,816.06			

**PROSSER SCHOOL DISTRICT NO.116**  
**Balance Sheet**  
**Capital Projects Fund (20)**  
**September 30, 2016**

GL	Description	Balance
230	Cash on Hand	0.00
240	Cash on Deposit with County	14,240.76
241	Warrants Outstanding	0.00
450	Investments	0.00
---	Asset	14,240.76
601	Accounts Payable	-224.70
640	Due To Other Funds	-12,200.00
---	Liability	-12,424.70
865	Restricted from Other Proceeds	-62.04
889	Assigned to Fund Purposes	-1,754.02
---	Equity	-1,816.06
---	Capital Projects	0.00



PROSSER SCHOOL DISTRICT NO.116

2016-2017 Budget Status Report

30--Debt Service Fund-- FUND BALANCE -- AGENCY ACCOUNTS -- Original -- BUDGET-STATUS-REPORT

Fiscal Year 2016 (September 1, 2016 - August 31, 2017)

For the PROSSER SCHOOL DISTRICT NO.116 School District for the Month of September, 2016

	ANNUAL BUDGET	ACTUAL FOR MONTH	ACTUAL FOR YEAR	ENCUMBRANCES	BALANCE	PERCENT
<b>A. REVENUES/OTHER FIN. SOURCES</b>						
1000 Local Taxes	0	.00	.00		.00	0.00
2000 Local Support Nontax	2,400	323.41	323.41		2,076.59	13.48
3000 State, General Purpose	0	.00	.00		.00	0.00
5000 Federal, General Purpose	0	.00	.00		.00	0.00
9000 Other Financing Sources	0	.00	.00		.00	0.00
<u>Total REVENUES/OTHER FIN. SOURCES</u>	<u>2,400</u>	<u>323.41</u>	<u>323.41</u>		<u>2,076.59</u>	<u>13.48</u>
<b>B. EXPENDITURES</b>						
Matured Bond Expenditures	0	.00	.00	0.00	.00	0.00
Interest On Bonds	0	.00	.00	0.00	.00	0.00
Interfund Loan Interest	0	.00	.00	0.00	.00	0.00
Bond Transfer Fees	0	.00	.00	0.00	.00	0.00
Arbitrage Rebate	0	.00	.00	0.00	.00	0.00
Underwriter's Fees	0	.00	.00	0.00	.00	0.00
<u>Total EXPENDITURES</u>	<u>0</u>	<u>.00</u>	<u>.00</u>	<u>0.00</u>	<u>.00</u>	<u>0.00</u>
<b>C. OTHER FIN. USES TRANS. OUT (GL 536)</b>						
	0	.00	.00			
<b>D. OTHER FINANCING USES (GL 535)</b>						
	0	.00	.00			
<b>E. EXCESS OF REVENUES/OTHER FIN.SOURCES OVER (UNDER) EXPENDITURES (A-B-C-D)</b>						
	2,400	323.41	323.41		2,076.59-	86.52-
<b>F. TOTAL BEGINNING FUND BALANCE</b>						
	922,548		922,813.32			
<b>G. G/L 898 PRIOR YEAR ADJUSTMENTS(+OR-)</b>						
	XXXXXXXX		.00			
<b>H. TOTAL ENDING FUND BALANCE (E+F + OR - G)</b>						
	924,948		923,136.73			
<b>I. ENDING FUND BALANCE ACCOUNTS:</b>						
G/L 810 Restricted for Other Items	0		.00			
G/L 830 Restricted for Debt Service	924,948		923,136.73			
G/L 835 Restrictd For Arbitrage Rebate	0		.00			
G/L 870 Committed to Other Purposes	0		.00			
G/L 889 Assigned to Fund Purposes	0		.00			
G/L 890 Unassigned Fund Balance	0		.00			
<u>TOTAL</u>	<u>924,948</u>		<u>923,136.73</u>			

**PROSSER SCHOOL DISTRICT NO.116**  
**Balance Sheet**  
**Debt Service Fund (30)**  
**September 30, 2016**

GL	Description	Balance
240	Cash on Deposit with County	923,136.73
310	Taxes Receivable	6,089.65
450	Investments	0.00
---	Asset	929,226.38
760	Unavailable Taxes Receivable	-6,089.65
---	Liability	-6,089.65
830	Restricted for Debt Service	-923,136.73
---	Equity	-923,136.73
---	Debt Service Fund	0.00

PROSSER SCHOOL DISTRICT NO.116

2016-2017 Budget Status Report

40--Associated Student Body Fund-- FUND BALANCE -- AGENCY ACCOUNTS -- Original -- BUDGET-STATUS-REPORT

Fiscal Year 2016 (September 1, 2016 - August 31, 2017)

For the PROSSER SCHOOL DISTRICT NO.116 School District for the Month of September, 2016

	ANNUAL BUDGET	ACTUAL FOR MONTH	ACTUAL FOR YEAR	ENCUMBRANCES	BALANCE	PERCENT
<b>A. REVENUES</b>						
1000 General Student Body	116,619	31,131.11	31,131.11		85,487.89	26.69
2000 Athletics	281,164	36,659.72	36,659.72		244,504.28	13.04
3000 Classes	50,322	3,430.90	3,430.90		46,891.10	6.82
4000 Clubs	322,410	22,436.88	22,436.88		299,973.12	6.96
6000 Private Moneys	34,900	.00	.00		34,900.00	0.00
<u>Total REVENUES</u>	805,415	93,658.61	93,658.61		711,756.39	11.63
<b>B. EXPENDITURES</b>						
1000 General Student Body	111,033	13,632.87	13,632.87	13,360.27	84,039.86	24.31
2000 Athletics	252,405	12,016.25	12,016.25	26,624.87	213,763.88	15.31
3000 Classes	43,442	2,542.14	2,542.14	2,422.00	38,477.86	11.43
4000 Clubs	325,276	9,622.73	9,622.73	19,825.51	295,827.76	9.05
6000 Private Moneys	37,401	.00	.00	0.00	37,401.00	0.00
<u>Total EXPENDITURES</u>	769,557	37,813.99	37,813.99	62,232.65	669,510.36	13.00
<b>C. EXCESS OF REVENUES OVER (UNDER) EXPENDITURES (A-B)</b>						
	35,858	55,844.62	55,844.62		19,986.62	55.74
<b>D. TOTAL BEGINNING FUND BALANCE</b>						
	315,127		278,788.03			
<b>E. G/L 890 PRIOR YEAR ADJUSTMENTS (+OR-)</b>						
	XXXXXXXX		.00			
<b>F. TOTAL ENDING FUND BALANCE (C+D + OR - E)</b>						
	350,985		334,632.65			
<b>G. ENDING FUND BALANCE ACCOUNTS:</b>						
G/L 810 Restricted for Other Items	0		.00			
G/L 819 Restricted for Fund Purposes	350,985		334,632.65			
G/L 840 Nonspnd FB - Invent/Prepd Itms	0		.00			
G/L 850 Restricted for Uninsured Risks	0		.00			
G/L 870 Committed to Other Purposes	0		.00			
G/L 889 Assigned to Fund Purposes	0		.00			
G/L 890 Unassigned Fund Balance	0		.00			
<u>TOTAL</u>	350,985		334,632.65			

**PROSSER SCHOOL DISTRICT NO.116**  
**Balance Sheet**  
**Associated Student Body Fund (40)**  
**September 30, 2016**

GL	Description	Balance
200	Imprest Cash	32,000.00
230	Cash on Hand	250.00
240	Cash on Deposit with County	320,208.42
241	Warrants Outstanding	-17,028.55
320	Due from Other Funds	136.00
430	Prepaid Items	0.00
450	Investments	0.00
---	Asset	335,565.87
601	Accounts Payable	-337.22
640	Due To Other Funds	-596.00
750	Unavailable Revenue	0.00
---	Liability	-933.22
819	Restricted for Fund Purposes	-334,632.65
840	Nonspendable Fund Balance	0.00
---	Equity	-334,632.65
---	Associated Student Body Fund	0.00

PROSSER SCHOOL DISTRICT NO.116

2016-2017 Budget Status Report

90--Transportation Vehicle Fund-- FUND BALANCE -- AGENCY ACCOUNTS -- Original -- BUDGET-STATUS-REPORT

Fiscal Year 2016 (September 1, 2016 - August 31, 2017)

For the PROSSER SCHOOL DISTRICT NO.116 School District for the Month of September, 2016

	ANNUAL BUDGET	ACTUAL FOR MONTH	ACTUAL FOR YEAR	ENCUMBRANCES	BALANCE	PERCENT
<u>A. REVENUES/OTHER FIN. SOURCES</u>						
1000 Local Taxes	0	.00	.00		.00	0.00
2000 Local Nontax	200	27.54	27.54		172.46	13.77
3000 State, General Purpose	0	.00	.00		.00	0.00
4000 State, Special Purpose	170,000	.00	.00		170,000.00	0.00
5000 Federal, General Purpose	0	.00	.00		.00	0.00
8000 Other Agencies and Associates	0	.00	.00		.00	0.00
9000 Other Financing Sources	0	.00	.00		.00	0.00
<u>A. TOTAL REV/OTHER FIN.SRCS (LESS TRANS)</u>	<u>170,200</u>	<u>27.54</u>	<u>27.54</u>		<u>170,172.46</u>	<u>0.02</u>
<u>B. 9900 TRANSFERS IN FROM GF</u>	<u>0</u>	<u>.00</u>	<u>.00</u>		<u>.00</u>	<u>0.00</u>
<u>C. Total REV./OTHER FIN. SOURCES</u>	<u>170,200</u>	<u>27.54</u>	<u>27.54</u>		<u>170,172.46</u>	<u>0.02</u>
<u>D. EXPENDITURES</u>						
Type 30 Equipment	250,000	.00	.00	242,770.78	7,229.22	97.11
Type 60 Bond Levy Issuance	0	.00	.00	0.00	.00	0.00
Type 90 Debt	0	.00	.00	0.00	.00	0.00
<u>Total EXPENDITURES</u>	<u>250,000</u>	<u>.00</u>	<u>.00</u>	<u>242,770.78</u>	<u>7,229.22</u>	<u>97.11</u>
<u>E. OTHER FIN. USES TRANS. OUT (GL 536)</u>	<u>0</u>	<u>.00</u>	<u>.00</u>			
<u>F. OTHER FINANCING USES (GL 535)</u>	<u>0</u>	<u>.00</u>	<u>.00</u>			
<u>G. EXCESS OF REVENUES/OTHER FIN SOURCES OVER (UNDER) EXP/OTH FIN USES (C-D-E-F)</u>	<u>79,800-</u>	<u>27.54</u>	<u>27.54</u>		<u>79,827.54</u>	<u>100.03-</u>
<u>H. TOTAL BEGINNING FUND BALANCE</u>	<u>304,923</u>		<u>304,926.15</u>			
<u>I. G/L 898 PRIOR YEAR ADJUSTMENTS (+OR-)</u>	<u>XXXXXXXX</u>		<u>.00</u>			
<u>J. TOTAL ENDING FUND BALANCE (G+H + OR - I)</u>	<u>225,123</u>		<u>304,953.69</u>			
<u>K. ENDING FUND BALANCE ACCOUNTS:</u>						
G/L 810 Restricted For Other Items	0		.00			
G/L 819 Restricted for Fund Purposes	225,123		304,953.69			
G/L 830 Restricted for Debt Service	0		.00			
G/L 835 Restrictd For Arbitrage Rebate	0		.00			
G/L 850 Restricted for Uninsured Risks	0		.00			
G/L 889 Assigned to Fund Purposes	0		.00			
G/L 890 Unassigned Fund Balance	0		.00			
<u>TOTAL</u>	<u>225,123</u>		<u>304,953.69</u>			

PROSSER SCHOOL DISTRICT NO.116  
Balance Sheet  
Transportation Vehicle Fund (90)  
September 30, 2016

<u>GL</u>	<u>Description</u>	<u>Balance</u>
240	Cash on Deposit with County	304,953.69
450	Investments	0.00
---	Asset	304,953.69
819	Restricted for Fund Purposes	-304,953.69
---	Equity	-304,953.69
---	Transportation Vehicle Fund	0.00

## **BOARD PACKET**

**TO:** Board of Directors  
**SUBJECT:** **Certificated Personnel**  
**AGENDA:** **Consent**  
**DATE:** December 27, 2016  
**PREPARED BY:** Dr. Ray Tolcacher, *Superintendent*

---

---

***Certificated Employees***

---

*There are no recommendations at this time.*

## **BOARD PACKET**

**TO:** Board of Directors  
**SUBJECT:** **Classified Personnel**  
**AGENDA:** **Consent**  
**DATE:** December 27, 2016  
**PREPARED BY:** Craig Reynolds, *Business Manager*

### **CLASSIFIED EMPLOYEES**

---

**Joaquin Arambul** has been hired as a one to one paraeducator at Whitstran Elementary School.

**Cara Shepherd** has been hired as an assistant girls' basketball coach at Prosser High School.

**Jeremy Anderson** has been hired as an assistant wrestling coach at Prosser High School.

**Osmar Jaimez** has been hired as an assistant wrestling coach at Prosser High School.

**Norma Burnett** has been hired as the am crossing guard at Housel Middle School.

**Alan Jones**, a bus driver, has notified the district of his intent to retire. His last day of work will be January 31, 2017.

**Leonard Wright** has been hired as an assistant boys' swim coach at Prosser High School.



## Special Board Meeting December 6, 2016

---

An Executive Session of the Prosser School District Board of Directors was called to order at 6:05 p.m. by Bill Jenkin, President. Other Board members present included Dr. Warren Barmore, Peggy Douglas, Andy Howe and Scotty Hunt. Also present were Dr. Ray Tolcacher, Superintendent; and Craig Reynolds, Business Manager. The purpose of the Executive Session was to review the performance of a public employee – RCW 42.30.110(1) (g); Review complaints or charges against a public employee - RCW 42.30.110 (1) (f); Collective bargaining interpretation or application of agreement with PSE – RCW 42.30.140(4) (a). The Executive Session was expected to last 60 minutes.

The Executive Session adjourned at 7:04 p.m.

A Special Meeting of the Board of Directors of Prosser School District was called to order at 7:08 p.m. by Bill Jenkin, President. Other Board members present included Dr. Warren Barmore, Peggy Douglas, Andy Howe and Scotty Hunt. Also present were Dr. Ray Tolcacher, Superintendent; Craig Reynolds, Business Manager; Deanna Flores, Assistant Superintendent; Julie Hyatt, Secretary and an audience representing school staff and community members. Ali Cox and Liz Bender, student representatives were also in attendance. Student representative Lacey Desserault was excused from the meeting.

### APPROVAL OF AGENDA:

Motion by Scotty Hunt, seconded by Andy Howe and motion carried to approve the agenda.

### COMMUNICATIONS:

- PTA Membership Forms
- Stepping Up to Leadership Article

### INFORMATION ITEMS:

#### School Improvement Plans and Schoolwide Plans – Keene-Riverview Elementary, Prosser Height Elementary, Prosser Falls High School

##### Keene-Riverview Elementary

Kris Moore, principal, distributed a handout to the Board members on the school improvement plan for KRV. She also had PowerPoint slides to accompany her presentation. Mrs. Moore described each of her schoolwide goals in detail.

##### Prosser Heights Elementary

Sally Juzeler, principal distributed a handout to the Board members entitled 2016-17 Improvement Goals and then provided a detailed description of the goals for PHE. Ms. Juzeler also had several slides which accompanied her presentation.

##### Prosser Falls High School

Dr. Syndi Duehn, principal, distributed a handout with bulleted points, describing the school improvement plan and monitoring for Falls. Dr. Duehn then explained in detail each of the points. One of the goals is to bring up the students' grade point average to a "B", as many students come to Falls with a "D" average.

Dr. Tolcacher mentioned that math tutors have begun helping students. Additionally, there is also going to be a writing skills tutor starting next Monday.

## Special Board Meeting December 6, 2016

---

Deanna Flores also added a few words about additional strategies to help students at Falls' with their studies.

Elizabeth Bender commented on her personal experience at Falls. She said it has been positive. It is a comfortable environment. She suggested the idea of allowing students who are ahead in their studies, to be able to tutor other students who are struggling.

### 2017 SEWASA Annual Board Workshop

Dr. Tolcacher asked the Board members who would like to attend. Julie Hyatt will make reservations for Dr. Tolcacher, Peggy Douglas, Dr. Barmore and the three student representatives.

### PROTOCOL FOR ADDRESSING BOARD:

Dr. Tolcacher did not read the Protocol for addressing the Board.

### HEARING OF VISITORS:

None

### Assistant Superintendent's Report

Mrs. Flores reported that she is facilitating the process of gathering nominees for the Crystal Apple Award. She encouraged everyone to nominate teachers for this award.

### Business Manager's Report

No report

### Superintendent's Report

Dr. Tolcacher reported we will need a payroll and voucher meeting near the end of the month.

The District brochure we are working on with J. Marie Reich is moving ahead. Mrs. Reich is also working with Pixelsoft as they prepare a video regarding information about our facilities. Scotty Hunt had recommended four community members to be featured in the video.

There will be two community meetings held to provide information about the upcoming bond. The meetings are scheduled for December 12 and 15 at 7:00 p.m. at the PHS library and KRV, respectively.

There was a power outage at Whitstran earlier today. The staff handled it all very well. The Whitstran students were bussed to Housel Middle School where they were served lunch. The power outage was resolved and the students were returned to Whitstran after lunch.

We have a huge substitute shortage, which is made worse due to professional development and winter illness. Dr. Tolcacher said he held a meeting yesterday to address this issue. One of the topics discussed was the practice of the District requiring emergency substitute teachers to hold a bachelor's degree. This is going to be changed. There will be a communication sent out soon to our community asking for those to apply who might be interested in becoming emergency substitutes. We are also putting together a training package to prepare these potential substitutes to work in our classrooms.

## Special Board Meeting December 6, 2016

---

### Board Members' Reports

**Warren Barmore** – No report

**Andy Howe** – Reported that Eastern Oregon University, lost a divisional playoff game last Saturday. They did finish 3<sup>rd</sup> in the nation though! Sadly, one of the players broke his leg in the Indianapolis game.

**Peggy Douglas** – No report

**Scotty Hunt** – No report

### Student Board Representatives

**Liz Bender** – Students were happy to receive their pictures and ID badges.

**Ali Cox** – Ms. Cox had to leave shortly after the Board meeting began.

### CONSENT ITEMS:

*Motion by Warren Barmore, seconded by Andy Howe and motion carried to approve the Consent Agenda, including a minor correction made to the special board meeting minutes of November 17, 2016.*

### Certificated Personnel

*There were no recommendations.*

### Classified Personnel

*Sara Mora resigned her position as the cheer advisor at Prosser High School.*

*Heather Stafford was hired as the cheer advisor at Prosser High School.*

*Norma Burnett was hired as the PM crossing guard at Housel Middle School.*

*James Weisz, bus driver was terminated, effective December 6, 2016.*

### Approval of Minutes

*Minutes from the November 17, 2016 special board meeting and the November 22, 2016 regular board meeting were presented.*

### Contracts and Personal Service Agreements:

*None*

### Volunteer Coaches

*None*

### OLD BUSINESS:

#### Attendance at National School Board's Annual Conference, March 25-27, 2017

The Board members discussed whether it would be a good idea to attend this national conference, or perhaps to wait until next year. Our nation is undergoing a lot of change with a new president and education secretary. There will likely be many changes in education at the federal level.

After discussion, the Board agreed to wait until another conference, possibly in 2018 when the national conference will be held in San Antonio. Julie Hyatt will cancel registrations and lodging reservations.

## Special Board Meeting December 6, 2016

---

Dr. Tolcacher said he thinks it would be a good idea to include the trip to the national conference in the next budget.

### ACTION ITEMS:

#### Election of Officers

#### Calls for Nomination of President

Motion by Andy Howe, seconded by Scotty Hunt and motion carried to nominate Peggy Douglas for president.

Motion by Andy Howe, seconded by Scotty Hunt and motion carried to close the nominations.

#### Election of President

Motion unanimously carried to approve the election of Peggy Douglas as president of the Prosser School District Board of Director.

Bill Jenkin asked Ms. Douglas to assume her place as president.

Peggy thanked Bill for his devotion to the school district and presented him with an engraved clock showing the District's appreciation.

Bryan Bailey also thanked Bill Jenkin for his dedication to the District. He presented Bill with a Prosser Mustang football helmet, display in his office in Olympia.

#### Calls for Nomination of Vice-President

Motion by Scotty Hunt, seconded by Bill Jenkin and motion carried to nominate Andy Howe for vice-president.

Motion by Bill Jenkin to nominate Dr. Warren Barmore.

Dr. Barmore denied the nomination.

#### Election of Vice-President

Motion unanimously carried to approve the election of Andy Howe as vice-president of the Prosser School District Board of Directors.

#### Vouchers

"The following vouchers as audited and certified by the auditing officers, as required by RCW 42.24.080, and those expense reimbursement claims certified, as required by RCW 42.24.090, are approved for payment.

General Fund Voucher numbers 190236 through 190312 totaling \$158,005.92  
Associated Student Body Fund Voucher numbers 184618 through 184632 totaling \$8,360.15".

Motion by Andy Howe, seconded by Bill Jenkin and motion carried to approve the accounts payable vouchers, payable December 9, 2016.

#### All School Buildings Approval

## Special Board Meeting December 6, 2016

---

WAC 180-16-220 requires annual school building approval by the school district Board of Directors as a condition of the District's entitlement to state basic education allocation funds.

All schools in the state write/revise their School Improvement Plan (SIP) each year. The plan, which is data-driven, promotes a positive impact on student learning, and includes a continuous improvement process to monitor, adjust and update.

In addition, five schools in our District (Whitstran, Prosser Heights, Keene-Riverview, Housel Middle School and Prosser High School) are Title I Schoolwide Schools. This means that federal and state program and basic education dollars (with the exception of state transitional bilingual funds and Title I migrant funds) that flow to these schools may be blended to the benefit of all students at risk of not meeting state standards. These five schools combine their School Improvement Plan with their federally required Title I Schoolwide Plan.

Annually, the site team at each school reviews, revises and updates their School Improvement Plan and Schoolwide Plan. This is an ongoing process of evaluation of data, planning of programs and interventions and assessment of results. These plans are on file at the curriculum office.

At the study session and Board meeting on November 22<sup>nd</sup>, the administrative staff from Prosser High School, Housel Middle School and Whitstran Elementary reviewed highlights from their schoolwide plans. At the December 6<sup>th</sup> Board meeting, the administrative staff from Keene-Riverview, Prosser Heights and Prosser Falls High reviewed highlights from their plans and how they will effectively support our students.

Motion by Bill Jenkin, seconded by Scotty Hunt and motion carried to approve all the school buildings in Prosser School District.

### Donation from Fraternal Order of Eagles

The Prosser High School student body has received a donation of \$539.56 from the Fraternal Order of Eagles #2647! The donation will be deposited into the ASB CHAMPS account. We greatly appreciate the help and support from the Eagles organization.

Motion by Scotty Hunt, seconded by Andy Howe and motion carried to accept the \$539.56 donation from the Fraternal Order of Eagles.

### Donation from Prosser AAU Basketball

The Prosser High School student body has received a donation of \$1500.00 from Prosser AAU Basketball! The donation will be deposited into the ASB Boys' Basketball account. We greatly appreciate the help and support from Prosser AAU Basketball.

Motion by Scotty Hunt, seconded by Andy Howe and motion carried to accept the \$1500.00 donation from Prosser AAU Basketball.

### Resignation of Board Member

Peggy Douglas read Mr. Jenkin's letter of resignation.

## Special Board Meeting December 6, 2016

---

Bill said a few words about his experience of serving on the school board. He said this had been a goal of his for quite some time. He also said that achieving the opportunity to serve the kids in our community has been a great honor.

Motion by Andy Howe, seconded by Scotty Hunt and motion carried to accept the resignation of Bill Jenkin from the Prosser School District Board of Directors.

Dr. Tolcacher distributed a proposed timeline of finding a replacement for Director District 3.

After discussion, there was a date change – January 3 will not work for some, so it was changed to January 4. The review of candidates will begin at 6:00 p.m. on January 4 and the interviews will begin at 7:00 p.m. on January 5. The meetings will be scheduled at the staff development room. A light dinner will be served.

### Adoption of Policy No. 6910: Construction Financing – FIRST READING

Our bond counsel, Jim McNeill, is recommending the Prosser School District Board of Directors adopt Policy No. 6910: Construction Financing. This policy will establish best practices for construction financing as set forth by the Washington State School Directors' Association. Such a policy will also enable the Superintendent to adopt procedures that are necessary to ensure compliance with federal tax and securities laws.

Motion by Andy Howe, seconded by Warren Barmore and motion carried to waive the First Reading, go to Second Reading and take final action to adopt policy 6910.

### Resolution No. 09-16: Authorization to Issue, Sell and Deliver a Limited General Obligation Bond to Pay Costs of Acquiring School Buses

At their Regular Board Meeting on November 22, 2016, the Prosser School Board discussed financing the purchase of two (2) school buses. To that end, our bond counsel, Jim McNeill, has prepared the appropriate resolution which is included in the Board packet.

Motion by Andy Howe, seconded by Scotty Hunt and motion carried to adopt Resolution No. 09-16: Authorization to Issue, Sell and Deliver a Limited General Obligation Bond to Pay Costs of Acquiring School Buses.

ROLL CALL: Scotty Hunt, Yes; Bill Jenkin, Yes; Peggy Douglas, Yes; Andy Howe, Yes; Warren Barmore, Yes.

### Agreement with Pixelsoft Films

Pixelsoft Films will assist the school district to develop factual video information to be utilized by the District to explain the bond proposal adopted by the school board for new construction of a high school, renovation and additions to the three existing elementary schools and renovation of the historic portion of the existing high school for district office space.

Motion by Bill Jenkin, seconded by Scotty Hunt and motion carried to approve the agreement with Pixelsoft Films.

### DISCUSSION ITEMS:

**Special Board Meeting December 6, 2016**

---

Superintendent Search Groups

Motion by Andy Howe, seconded by Scotty Hunt and motion carried to move this Discussion Item to an Action Item.

Scotty Hunt distributed a handout listing the three different search groups the Board members interviewed at the WSSDA Annual Conference. He then briefly described the three different groups.

Discussion ensued about the groups with the Board members providing their opinions.

Motion by Scotty Hunt, seconded by Warren Barmore and motion carried to enter into a contract with Northwest Leadership.

ADJOURNMENT:

Motion by Andy Howe, seconded by Scotty Hunt and motion carried to adjourn the Board meeting at 9:11 p.m.

FUTURE MEETINGS:

After discussion, it was agreed to have a regular meeting on December 27, 2016 at 7:00 p.m.

- Regular Board Meeting, December 27, 2016, Keene-Riverview MPR, 7:00 p.m.
- Special Board Meeting to Review Board Member Candidate Applications, January 4, 2017, Staff Development Room, 6:00 p.m.
- Special Board Meeting to Interview Board Member Candidates, January 5, 2017, Staff Development Room, 7:00 p.m.

NEGOTIATIONS: RCW 42.30.140 (4)

---

Clerk to the Board

---

Board President

---

Secretary to the Clerk of the Board

**Prosser School District No. 116**  
**Contracts and Personal Service Agreements**  
**Consent**  
**December 27, 2016**

**CONTRACTS/AGREEMENTS:**

**1. Vision Services Agreement- ESD 105:**

ESD 105 will continue to provide to provide Braille, orientation and mobility services to one student in our district for the 2016-2017 school year. The cost of the services will be \$150 to \$165 per hour and will be paid by Special Services Department.

**AMENDMENT TO CONTRACT:**

**PERSONAL SERVICE AGREEMENTS:**

**RECOMMENDATION:**

**It is recommended that the Board of Directors approve the above Contracts/Agreements.**



## **BOARD PACKET**

**TO:** Board of Directors  
**SUBJECT:** **Volunteer Coaches**  
**AGENDA:** **Consent**  
**DATE:** December 27, 2016  
**PREPARED BY:** Dr. Ray Tolcacher, Superintendent

### **VOLUNTEER COACHES**

---

**Debra Wagner** has completed the paperwork to be a volunteer baseball coach at Housel Middle School.

## BOARD PACKET

**TO:** Board of Directors  
**SUBJECT:** Leadership WSSDA Participation for Scott Hunt  
**AGENDA:** Action  
**DATE:** December 27, 2016  
**PREPARED BY:** Dr. Ray Tolcacher, *Superintendent*

### Background

Board member Scott Hunt has requested the board to consider his participation in Leadership WSSDA. As explained by WSSDA, *"this is a premier program for school directors seeking to improve their expertise and leadership capacity within the educational system in their personal and professional lives."*

If approved by the Board, this will not be the first Prosser board member to be approved for this program. Past board member and president, Kay Brader, not only graduated from the program, but as a result of the work completed, was elected to the State WSSDA Board of Directors. This involvement will give board member Hunt valuable information and training to assist the Board, as a whole, in future years. The cost of the program, beginning in February 2017, will include the District's commitment for the registration fee of \$750, lodging for the four sessions of approximately \$650, plus mileage for travel of \$850, not including any meals on the way to and from the four (4) trainings. There will be two sessions in Olympia, one session in Wenatchee and one session at Seatac. The final session will take place next November at the WSSDA Annual Conference in Bellevue.

### Recommendation:

It is recommended the Board approve the participation of Scott Hunt for the Leadership WSSDA program and fund the full costs from the District General Fund.



## 2017 Registration – Part I

---

### Instructions

- Registrations must be received no later than January 13, 2017.
- Copy this form to your computer, complete it and email it to [c.lauderdale@wssda.org](mailto:c.lauderdale@wssda.org).

Name: \_\_\_\_\_ School District: \_\_\_\_\_  
Home Address: \_\_\_\_\_ City, State, ZIP: \_\_\_\_\_  
Home Phone: \_\_\_\_\_ Cell Phone: \_\_\_\_\_  
Email: \_\_\_\_\_ Date Your School Board Service Began: \_\_\_\_\_

### Tuition

Tuition of \$750.00 for the 2017 Leadership WSSDA program is due February 10, 2017. Tuition includes the cost to run the program, meals and snacks during the sessions. Tuition does not include the cost of travel and lodging.

Tuition is fifty percent (50%) refundable following the first session and prior to the second session. After the second session, no refunds will be given.

The \$750.00 tuition will be paid by (please check all that apply):

- Myself (Amount): \_\_\_\_\_
- My District (Amount): \_\_\_\_\_
- Sponsorship from local business or service organizations (i.e., Rotary, Kiwanis, etc.). Indicate the organization and amount: \_\_\_\_\_
- Other: \_\_\_\_\_

### Commitment Statement

If selected, I commit to attending all sessions. I will devote the time and resources necessary to complete the Leadership WSSDA project.

Session dates are: Feb. 10-11, Apr. 21-22, July 14-15, Sept. 8-9, Nov. 15

Signature (electronic is okay): \_\_\_\_\_ Date: \_\_\_\_\_

We recommend that you contact your employer, if applicable, concerning the commitment of time to the Leadership WSSDA program.



## 2017 Registration– Part II

---

Please check all of the following WSSDA activities in which you have participated:

- Annual Conferences
- Legislative Assemblies
- Legislative Conferences
- In-district Workshops
- Regional Workshops
- Regional Meetings
- WSSDA Board
- WSSDA Committees or Task Forces. Please specify: \_\_\_\_\_
- Other WSSDA Trainings. Please specify: \_\_\_\_\_

Other life experiences, board and/or governance training. Please specify:

\_\_\_\_\_

### General Information

Why do you want to participate in Leadership WSSDA?

\_\_\_\_\_

What specific skills or knowledge are you most interested in developing or augmenting through this program?

\_\_\_\_\_

Is there anything else you would like us to know?

\_\_\_\_\_

**Your registration must be submitted to [c.lauderdale@wssda.org](mailto:c.lauderdale@wssda.org) by January 13, 2017.**

For more information, please contact Colleen Miller at (360) 252-3006 or [C.Miller@wssda.org](mailto:C.Miller@wssda.org) or Tricia Lubach at (509) 760-0321 or [T.Lubach@wssda.org](mailto:T.Lubach@wssda.org)

Search

Login

- HOME
- ABOUT US
- EVENTS
- LEGISLATIVE
- POLICY & LEGAL
- LEADERSHIP DEVELOPMENT
- RECOGNITION
- NEWSROOM

- Meet the team
- Board Development
- Equity Resources
- Tribal Relations
- Online Board Self-Assessment
- Superintendent Search
- Superintendent Evaluations
- Publications
- Recorded Webinars

# Leadership WSSDA: More Information and Registration

## Registration

The program will be most beneficial to school directors who have completed at least three years of service on their school board.

Registration forms may be **downloaded here** and will be accepted through **January 13, 2017**.

### Cost

The \$750 tuition fee for the yearlong program covers the cost of facilities, materials, speakers and meals. Other costs to consider will be an overnight stay (depending on your location) for each session.

There are several ways to cover the cost of the program, including having your school district fund it as a board development item, requesting a scholarship from the Washington School Boards Educational Foundation, covering the cost yourself or any combination of these. We are happy to work with you to make the program accessible to all school directors.

## Graduation requirements

Participants must make a commitment to attend and actively participate in all sessions. Exceptions for emergencies may be

made on an individual basis. All participants are expected to

Leadership WSSDA: More Information and Registration  
made on an individual basis. All participants are expected to  
complete reading assignments on time to get the most benefit  
from class discussions and activities.

**[Return to Leadership WSSDA home page.](#)**

---

© Copyright 2015 Washington State School Directors'  
Association

## BOARD PACKET

**TO:** Board of Directors  
**SUBJECT:** Consultant Agreement with Dr. Richard Cole for Psychological Services  
**AGENDA:** Action  
**DATE:** December 27, 2016  
**PREPARED BY:** Dr. Ray Tolcacher, *Superintendent*

### **Background**

As a result of our District's continued need for school psychologist services, the District's psychologists, Special Education Director and Superintendent have been having regular meetings regarding psychologist services. As the District continues to actively recruit additional testing and evaluation services, our psychologists met with former Sunnyside Superintendent Dr. Rick Cole on November 10<sup>th</sup> to discuss the feasibility of Dr. Cole, who is a fully licensed and credentialed school psychologist, assisting the school district with additional testing and evaluations on an "as needed" basis. As a result of this meeting, the district's psychologists have recommended that we authorize Dr. Cole to assist as needed. This additional service will assist our current psychologists if the need arises as we continue to find additional fulltime psychologist services.

### **Recommendation:**

It is recommended that the Consultant Services Agreement for "*as needed psychologist services*" with Dr. Richard Cole be approved.



The prospective vendor certifies that neither it nor its principals is presently debarred, suspended, proposed for debarment, declared ineligible, or voluntarily excluded from participation in this transaction by any federal department agency.

**Prosser School District No. 116  
BUSINESS OFFICE  
1126 Meade Ave., Ste. A, Prosser, WA 99350  
509-786-3323**

**CONSULTANT SERVICE  
AGREEMENT**

Consultants are employed for a specific purpose and a limited period of time. They are not covered by industrial insurance nor receive any employee benefits of the district. Consultants normally have an IRS Identification Number.

The fee for consultants is to be a flat rate agreed upon and approved in advance by the department manager and the business manager. Reimbursement for expenses such as supplies, mileage, meals and lodging require prior approval. Receipts for expenses will be required when claim for payment of this agreement is submitted.

Submit claim for payment on the Consultant Claim for Services Rendered form. Claims submitted to the business office by the 10th of each month shall be paid on the last day of the month.

The full amount paid to the consultant by the district will be reported to the IRS on Form 1099. When filing a tax return it is the responsibility of the consultant to deduct from this full amount any expenses incurred.

Richard D Cole 826 Mayhew Sunnyside wa  
Name (Print or type) Address 98944

The duties of this assignment are as follows - (Be specific - attach additional sheets if necessary)

Psychological and Academic Assessments

Anticipated date of service: As needed Fee: \$125/hr Estimated Expenses: As needed

I have read the above stipulations of this agreement and accept the conditions:

Dated this day 12/10 2016

Richard Cole  
Consultant  
544-64-8049  
IRS Identification No. Or Social Security No.  
  
Unified Business Identification No.

Principal/Director \_\_\_\_\_  
Business Manager \_\_\_\_\_

Budget Code \_\_\_\_\_

Board Approval Date \_\_\_\_\_

White Accounts Payable      Yellow Principal/Director      Pink Independent Contractor



## **BOARD PACKET**

**TO:** Board of Directors  
**SUBJECT:** Vision Fillers, Inc. Service Agreement  
**AGENDA:** Action  
**DATE:** December 27, 2016  
**PREPARED BY:** Kevin Lusk, Prosser High School Principal

### **Background**

Cara Filler from Vision Fillers, Inc. will be giving an hour long presentation to the student body at Prosser High School on January 27, 2017. The cost of this presentation is \$1,250 which includes travel expenses and will be funded through the ASB Budget.

### **Recommendation:**

It is recommended that the School Board of Directors approve the Vision Fillers, Inc. Service Agreement.

debarment, declared ineligible, or voluntarily excluded from participation in this transaction by any federal department agency.



Prosser School District No. 116  
BUSINESS OFFICE  
1126 Meade Ave., Ste. A, Prosser, WA 99350  
509-786-3323

CONSULTANT SERVICE  
AGREEMENT

Consultants are employed for a specific purpose and a limited period of time. They are not covered by industrial insurance nor receive any employee benefits of the district. Consultants normally have an IRS Identification Number.

The fee for consultants is to be a flat rate agreed upon and approved in advance by the department manager and the business manager. Reimbursement for expenses such as supplies, mileage, meals and lodging require prior approval. Receipts for expenses will be required when claim for payment of this agreement is submitted.

Submit claim for payment on the Consultant Claim for Services Rendered form. Claims submitted to the business office by the 10th of each month shall be paid on the last day of the month.

The full amount paid to the consultant by the district will be reported to the IRS on Form 1099. When filing a tax return it is the responsibility of the consultant to deduct from this full amount any expenses incurred.

Vision Fillers, Inc.  
Name (Print or type)

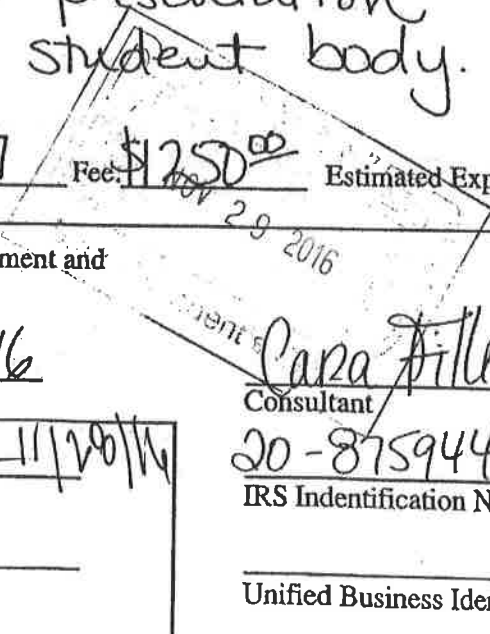
800 NE Tenney Rd  
Address Suite 110-354

The duties of this assignment are as follows - (Be specific - attach additional sheets if necessary)

Provide a 1 hour presentation assembly to our student body.

Vancouver, WA  
98685

Anticipated date of service: 1/27/17 Fee: \$1250<sup>00</sup> Estimated Expenses: travel fee included



I have read the above stipulations of this agreement and accept the conditions:

Dated this day November 21 2016

[Signature] 11/20/16  
Principal/Director

Cara Filler  
Consultant

20-8759446  
IRS Identification No. Or Social Security No.

Business Manager

Gen ASB 1040  
Budget Code

Unified Business Identification No.

Board Approval Date \_\_\_\_\_

- White Accounts Payable
- Yellow Principal/Director
- Pink Independent Contractor

**I. AGREEMENT:**

This agreement is made between Vision Fillers, Inc. ("Presenter") and Prosser High School ("Purchaser"). It is mutually agreed upon between the parties as follows. The Purchaser hereby engages the Presenter and the Presenter hereby agrees to furnish the presentation(s) hereinafter described upon all the terms and conditions herein set forth.

**II. PRESENTATION INFORMATION:**

The Presenter will provide 1 presentation(s) of approximately 60 minutes each unless otherwise adjusted to meet your event schedule. If such an adjustment is required, please notify us within fourteen (14) days of the presentation(s). The presentation(s) may be followed by a Meet and Greet or Q/A session per your request.

Presenter: Cara Filler  
 Date: January 27th 2017 Time(s): 1:40  
 School/Organization: Prosser High School  
 Address: 1203 Prosser Avenue Prosser, WA 99350

**III. PRESENTATION REQUIREMENTS:**

Purchaser is responsible for providing the following logistics and AV requirements with regard to Presenter's presentation:

1. **REQUIRED EQUIPMENT:**
  1. Projector and Screen
  2. Microphone (cordless preferred)
  3. Access to an electrical outlet

**IV. COMPENSATION:**

Purchaser shall pay the Presenter, a special discounted fee of **\$ 1250 inclusive of travel for presentation delivered in 1 check made out to Vision Fillers, Inc.** Purchaser agrees to provide full payment completion of services on January 27th 2017. A W9 form is available upon request.

**V. EDUCATIONAL MATERIALS: (Optional)**

Purchaser may buy discounted t-shirts and air fresheners with iSpokeUp message proudly displayed. For custom design- please contact us for specific pricing. Prices below include shipping and all taxes.

<b>Tshirts</b>		<b>Air Fresheners</b>	
Quantity 5-29	\$8.00 each	Quantity 1-250	\$1.50 each
Quantity 30-50	\$7.50 each	Quantity 250-450	\$1.00 each
Quantity 50+	\$7.00 each	Quantity 450+	\$0.85 each



**VI. TESTIMONIAL AND REFERRALS:**

Following Event, Purchaser will be asked to provide a written or e-mailed testimonial or letter of recommendation to Presenter if satisfied by work provided. Purchaser will also be asked to provide two e-mailed referrals or introductions to other like schools, contacts or organizations.

**VII. EDUCATIONAL PRODUCT SALES:**

Presenter retains the right to sell educational materials after Event(s). If Purchaser does not allow sales of products, Presenter must be notified prior to Event(s). Bulk pricing for educational materials, books, shirts and products are available to Purchaser in advance of Event and quoted above in section V.

**IX. RECORDINGS:**

No audio or visual recordings made of the presentation(s) may be distributed, marketed, duplicated or used in any way for commercial or non-commercial use without the express written permission of Presenter. Purchaser will provide Vision Fillers, Inc. a copy of any raw footage of video/audio that is shot of the presentation(s) for Presenter's marketing purposes and website. Presenter shall retain exclusive and entire proprietary and intellectual property rights to presentation(s) and all materials prepared and used by Presenter in connection with such presentations.

**IX. CANCELLATION:**

If Purchaser cancels Event within 14 days of the date of such Event, Purchaser will be liable for 100% of Presenter's fee and total reimbursement of travel costs. If Purchaser cancels Event within 14 to 30 days prior to engagement, Purchaser will be liable for 50% of the fee and all airline penalties incurred by Presenter. If Event is canceled by Purchaser due to an act of God or unforeseeable emergency, Vision Fillers, Inc. will refund entire fee.

If Presenter cancels due to unforeseen personal emergency or an act of God, Vision Fillers, Inc. will find an alternative presenter for Event of equal talent and who is acceptable to Purchaser. If no acceptable alternative is available, Vision Fillers, Inc. will immediately refund the holding deposit.

**X. ENTIRE AGREEMENT:**

This Agreement constitutes the entire Agreement between the parties and may not be changed unless mutually agreed upon in writing by both parties.

IN WITNESS WHEREOF, the parties hereto have indicated their acceptance of the terms in this Agreement on the Effective date indicated by the signatures set forth below. Parties are in full understanding that these terms are binding unless prohibited by law.

X   
Purchaser Signature

X   
Presenter Signature

Kevin Lusk, Principal  
Purchaser Name (Print)

Vision Fillers, Inc.  
800 NE Tenney Road, Suite 110-354  
Vancouver, WA 98685

The following vouchers, as audited and certified by the Auditing Officer as required by RCW 42.24.080, and those expense reimbursement claims certified as required by RCW 42.24.090, are approved for payment. Those payments have been recorded on this listing which has been made available to the board.

As of December 27, 2016, the board, by a \_\_\_\_\_ vote, approves payments, totaling \$279,707.72. The payments are further identified in this document.

Total by Payment Type for Cash Account, GF WARRANTS PAYABLE:  
Warrant Numbers 190313 through 190476, totaling \$279,707.72

Secretary \_\_\_\_\_ Board Member \_\_\_\_\_  
Board Member \_\_\_\_\_ Board Member \_\_\_\_\_  
Board Member \_\_\_\_\_ Board Member \_\_\_\_\_

Check Nbr	Vendor Name	Check Date	Check Amount
190313	24 HOUR TOWING AND RECOVERY	12/30/2016	269.75
190314	AIREFCO INC	12/30/2016	438.17
190315	ALL AMERICAN PROPANE	12/30/2016	968.70
190316	ALSCO AMERICAN LINEN	12/30/2016	224.69
190317	APS INC	12/30/2016	389.72
190318	ARCHITECTS WEST, P.A.	12/30/2016	660.96
190319	AT & T MOBILITY	12/30/2016	1,128.81
190320	ATHLETIC REPAIR SERVICE	12/30/2016	6,146.76
190321	AUTOZONE INC	12/30/2016	16.28
190322	AVANT ASSESSMENT LLC	12/30/2016	725.00
190323	B & B EQUIPMENT	12/30/2016	57.71
190324	B & B TRAILERS LLC	12/30/2016	271.50
190325	BAKERIES, FRANZ FAMILY	12/30/2016	1,171.80
190326	BANK, U S	12/30/2016	1,982.57
190327	BARB STROTE LLC	12/30/2016	255.00
190328	BATTERY SYSTEMS INC.	12/30/2016	508.59
190329	BELFOR PROPERTY RESTORATION	12/30/2016	2,082.52
190330	BENDER, ANN C	12/30/2016	187.96
190331	BENTON COUNTY PUD	12/30/2016	27,304.14
190332	BENTON FRANKLIN HEALTH DEPT	12/30/2016	690.00
190333	BENTON REA	12/30/2016	6,128.60
190334	BJ PAINT & CARPET INC	12/30/2016	82.81
190335	BLEYHL FARM SERVICE	12/30/2016	11,511.84
190336	BOLT, KIMBERLY A	12/30/2016	114.48
190337	BROOKS, KATHY P	12/30/2016	102.00
190338	BROWN'S TIRE CO	12/30/2016	3,004.76
190339	BRYSON SALES & SERVICE	12/30/2016	1,254.95
190340	BUILDERS HARDWARE	12/30/2016	849.71
190341	CAMPBELL, BLAKE S	12/30/2016	36.18
190342	CAMPBELL OFFICE SUPPLY/YAKIMA	12/30/2016	583.86
190343	CAMPBELL, KIPP J	12/30/2016	350.00
190344	CASCADE NATURAL GAS CO	12/30/2016	10,053.92
190345	CASH & CARRY	12/30/2016	25.88

Check Nbr	Vendor Name	Check Date	Check Amount
190346	CDW GOVERNMENT INC	12/30/2016	1,047.49
190347	CENGAGE LEARNING	12/30/2016	195.48
190348	CENTURY LINK	12/30/2016	12.65
190349	CH2O	12/30/2016	184.78
190350	CHARTER COMMUNICATIONS	12/30/2016	27.93
190351	CHEMPOINT.COM	12/30/2016	1,389.63
190352	CHILDERS, MARSHA RAE	12/30/2016	77.58
190353	CI INFORMATION MANAGEMENT	12/30/2016	285.09
190354	CITY OF PROSSER	12/30/2016	10,816.50
190355	CLASS 5	12/30/2016	1,906.99
190356	COFFMAN, MARCIE R	12/30/2016	21.60
190357	COMM/TECH	12/30/2016	534.31
190358	COMMUNITIES IN SCHOOLS OF BENT	12/30/2016	3,181.81
190359	CONSOLIDATED ELECTRICAL DIST	12/30/2016	1,268.46
190360	CUMMINS INC	12/30/2016	44.02
190361	CURRICULUM ASSOCIATES INC	12/30/2016	290.09
190362	D & L SUPPLY AND MFG	12/30/2016	96.36
190363	DELEON, DENISE I	12/30/2016	102.00
190364	DELL	12/30/2016	2,347.31
190365	DENCHEL FORD COUNTRY	12/30/2016	250.00
190366	DEVORE, TRAVIS C	12/30/2016	45.59
190367	DYNACCO	12/30/2016	187.88
190368	EDWARDS, MARY RUTH	12/30/2016	225.00
190369	EKON-O-PAC	12/30/2016	6,670.00
190370	ENGRAVINGS UNLIMITED INC	12/30/2016	100.00
190371	ESD #105	12/30/2016	6,870.45
190372	ESD #123	12/30/2016	23,514.78
190373	FOOD DEPOT	12/30/2016	305.23
190374	FOOD SERVICES OF AMERICA	12/30/2016	24,160.84
190375	FP MAILING SOLUTIONS	12/30/2016	176.09
190376	GALLEGOS, JESSE C	12/30/2016	23.44
190377	GOLDEN HORSE	12/30/2016	127.61
190378	GRAINGER	12/30/2016	301.16
190379	GRANDVIEW LUMBER	12/30/2016	495.43
190380	GREGORY, LARRY F	12/30/2016	285.70
190381	GUILFORD PUBLICATIONS INC	12/30/2016	336.00
190382	H & H AUTO	12/30/2016	272.35
190383	HALL CHEVROLET BUICK	12/30/2016	75.72
190384	Vendor Continued Check	12/30/2016	0.00
190385	COOK'S ACE HARDWARE	12/30/2016	1,788.62
190386	HOUGHTON MIFFLIN	12/30/2016	195.48
190387	HUDNALL, RALPH W.	12/30/2016	96.43
190388	HUGHES, GARY L.	12/30/2016	161.28
190389	HYATT, JULIE A	12/30/2016	15.13
190390	IBS INCORPORATED	12/30/2016	482.88
190391	IMPERIAL SUPPLIES LLC	12/30/2016	126.50
190392	IRRIGATION SPECIALISTS INC	12/30/2016	36.14
190393	JAIME, DANYELLE M	12/30/2016	53.78
190394	JEREMYS 1896 PUBLIC HOUSE	12/30/2016	56.45
190395	JOHNSTONE SUPPLY CO	12/30/2016	47.21

Check Nbr	Vendor Name	Check Date	Check Amount
190396	K C D A	12/30/2016	92.54
190397	KATHRYN KARSCHNEY	12/30/2016	5,200.00
190398	KIRK, LINDA W	12/30/2016	67.35
190399	KONE INC	12/30/2016	3,290.19
190400	LAB-AIDS	12/30/2016	274.64
190401	LADINES, JON	12/30/2016	1,500.00
190402	LANE, CYNTHIA M.	12/30/2016	65.07
190403	LEADER SERVICES	12/30/2016	8.40
190404	LEMKE, DEBORAH A	12/30/2016	60.36
190405	LINDEBLAD, KRISTINE	12/30/2016	9,620.54
190406	LINK, CENTURY	12/30/2016	1,110.88
190407	LINK, CENTURY	12/30/2016	31.16
190408	LINKONLEARNING	12/30/2016	814.50
190409	LOCKSHOP	12/30/2016	373.88
190410	MALDONADO, GUADALUPE	12/30/2016	7.99
190411	MALDONADO, LUPE	12/30/2016	202.40
190412	MENKE JACKSON LAW FIRM	12/30/2016	5,607.10
190413	MID-AMERICAN RESEARCH CHEMICAL	12/30/2016	822.83
190414	MIKE'S HOME APPLIANCE REPAIR	12/30/2016	81.45
190415	MILLER, DANIELLE M	12/30/2016	65.88
190416	MOON SECURITY SERVICES INC	12/30/2016	1,363.28
190417	MOORE, KRISTINE	12/30/2016	40.76
190418	NATIONAL COUNCIL OF ENGLISH TE	12/30/2016	75.00
190419	NC MACHINERY	12/30/2016	103.23
190420	OFFICE DEPOT INC	12/30/2016	1,406.94
190421	OXARC INC	12/30/2016	378.89
190422	PACIFIC OFFICE AUTOMATION	12/30/2016	69.50
190423	PC & MAC EXCHANGE	12/30/2016	360.00
190424	PEARSON, TRACY D	12/30/2016	9.74
190425	PHILLIPS66/CONOCO/76	12/30/2016	47.01
190426	PINNACLE INVESTIGATION CORP	12/30/2016	242.28
190427	PLATT	12/30/2016	279.61
190428	PROSSER NAPA	12/30/2016	1,278.66
190429	PROSSER RENTALS	12/30/2016	15.12
190430	RAINWATER INC	12/30/2016	30.00
190431	REYES, MARTHA	12/30/2016	313.20
190432	RIDGEVIEW ORCHARDS	12/30/2016	1,856.70
190433	RIVERA, CAROL LEE	12/30/2016	46.64
190434	RIVERSIDE STORAGE	12/30/2016	537.00
190435	RODDA, TERESA L	12/30/2016	359.25
190436	SAFEWAY	12/30/2016	48.99
190437	SCHETKY NW SALES INC	12/30/2016	267.34
190438	SCHOOL DIST #116 REVOLV FUND	12/30/2016	3,100.00
190439	SCHOOLFIX.COM	12/30/2016	303.96
190440	SCHOOLWIDE	12/30/2016	14.36
190441	SCREENING MIMIES	12/30/2016	129.84
190442	SE WA CHAPTER WAPT	12/30/2016	70.00
190443	SERDAHL, NICHOLAS D	12/30/2016	199.21
190444	SHOPKO STORES OPERATING CO., L	12/30/2016	18.98
190445	SIX ROBBLEES INC	12/30/2016	1,363.31

Check Nbr	Vendor Name	Check Date	Check Amount
190446	SLONECKER, ANDREA C	12/30/2016	136.84
190447	SMITH, BRIAN R	12/30/2016	308.88
190448	SMITH, DEAN DONALD	12/30/2016	91.98
190449	SMITH, JOSHUA	12/30/2016	200.00
190450	STAPLES BUSINESS ADVANTAGE	12/30/2016	654.66
190451	STARK, NANETTE L	12/30/2016	129.00
190452	STATE OF WASHINGTON DEPT OF LI	12/30/2016	26.00
190453	SUPER DUPER PUBLICATIONS	12/30/2016	17.45
190454	SUPPLYWORKS	12/30/2016	12,092.61
190455	T & M BOS, INC	12/30/2016	865.98
190456	TERRY'S DAIRY	12/30/2016	7,529.39
190457	THE PRINT GUYS	12/30/2016	762.42
190458	THE SUPPLY COMPANY LLC	12/30/2016	87.72
190459	THOMPSON AUDIOLOGY & HEARING C	12/30/2016	40.00
190460	TINSLEY WELDING	12/30/2016	69.62
190461	TONY'S ALBRECHT GLASS INC	12/30/2016	43.44
190462	TREAT, LACEY S	12/30/2016	60.27
190463	TRUMP, DENINE R	12/30/2016	126.24
190464	TUBAC, ELIZABETH C	12/30/2016	43.20
190465	U S BANK EQUIPMENT FINANCE	12/30/2016	7,427.17
190466	VALLEY WATER SERVICES	12/30/2016	187.50
190467	VINE TECH EQUIPMENT LLC	12/30/2016	46.65
190468	WAL-MART COMMUNITY	12/30/2016	263.63
190469	WALDMAN'S PRODUCE	12/30/2016	4,037.25
190470	WALTER E NELSON COMPANY	12/30/2016	307.19
190471	WARDS	12/30/2016	668.28
190472	WEAVER EXTERMINATING	12/30/2016	949.44
190473	WILES, CRAIG PHILLIP	12/30/2016	20.00
190474	WLA	12/30/2016	75.00
190475	WSIPC	12/30/2016	9,274.88
190476	YVCC	12/30/2016	18,646.20
164	Computer	Check(s) For a Total of	279,707.72



Check Nbr	Vendor Name	Check Date	Invoice Number	Invoice Desc	PO Number	Invoice Amount	Check Amount
190313	24 HOUR TOWING AND RECOVERY	12/30/2016	3797		0	269.75	269.75
10 E 530 9900 53 7000 073 0000 0000				General Fund/Expenditures/Pupil Transportation		269.75	
190314	AIREFCO INC	12/30/2016	3694734		0	433.75	438.17
10 E 530 9700 64 5000 074 0000 0000				General Fund/Expenditures/District-Wide Support		433.75	
			3697349		0	4.42	
10 E 530 9700 64 5000 074 0000 0000				General Fund/Expenditures/District-Wide Support		4.42	
190315	ALL AMERICAN PROPANE	12/30/2016	154253	2016-2017 Annual Contract	7201600006	968.70	968.70
10 E 530 9700 65 7840 110 0000 0000				General Fund/Expenditures/District-Wide Support		968.70	
190316	ALSCO AMERICAN LINEN	12/30/2016	LSP01834258		0	44.91	224.69
10 E 530 9900 53 7270 073 0000 0000				General Fund/Expenditures/Pupil Transportation		44.91	
			LSP01837010		0	44.91	
10 E 530 9900 53 7270 073 0000 0000				General Fund/Expenditures/Pupil Transportation		44.91	
			LSP01839716		0	44.91	
10 E 530 9900 53 7270 073 0000 0000				General Fund/Expenditures/Pupil Transportation		44.91	
			LSP01842465		0	44.91	
10 E 530 9900 53 7270 073 0000 0000				General Fund/Expenditures/Pupil Transportation		44.91	
			LSP01845189		0	45.05	
10 E 530 9900 53 7270 073 0000 0000				General Fund/Expenditures/Pupil Transportation		45.05	
190317	APS INC	12/30/2016	59454		0	77.98	389.72
10 E 530 9700 13 5000 072 0000 0000				General Fund/Expenditures/District-Wide Support		77.98	
			59503	FP Postbase 65 automatic feeder/sealer and scale	7201600017	311.74	
10 E 530 9700 13 7000 072 0000 0000				General Fund/Expenditures/District-Wide Support		311.74	
190318	ARCHITECTS WEST, P.A.	12/30/2016	8877		0	660.96	660.96
10 E 530 9780 13 7000 072 0000 0000				General Fund/Expenditures/10 yr Facility Study		660.96	
190319	AT & T MOBILITY	12/30/2016	996468694X12042016		0	1,128.81	1,128.81
10 E 530 0100 21 7800 060 0000 0000				General Fund/Expenditures/Basic Education		93.15	
10 E 530 0100 23 7800 120 0000 0000				General Fund/Expenditures/Basic Education		20.00	
10 E 530 0100 23 7800 130 0000 0000				General Fund/Expenditures/Basic Education		57.15	
10 E 530 0100 23 7800 240 0000 0000				General Fund/Expenditures/Basic Education		76.28	
10 E 530 0100 23 7800 450 0000 0000				General Fund/Expenditures/Basic Education		96.03	
10 E 530 0100 26 7800 064 0000 0000				General Fund/Expenditures/Basic Education		159.08	
10 E 530 0135 23 7800 482 0000 0000				General Fund/Expenditures/Alt High School		20.22	
10 E 530 2100 21 7800 063 0000 0000				General Fund/Expenditures/Spec Ed - State		48.56	
10 E 530 5320 27 7800 060 0000 0000				General Fund/Expenditures/Migrant Ed		273.97	

Check Nbr	Vendor Name	Check Date	Invoice Number	Invoice Desc	PO Number	Invoice Amount	Check Amount
10 E 530 9700 61 7800 074 0000 0000				General Fund/Expenditures/District-Wide Support		124.29	
10 E 530 9730 72 7800 076 0000 0000				General Fund/Expenditures/Tech Coordinator - Office		61.14	
10 E 530 9900 51 7800 073 0000 0000				General Fund/Expenditures/Pupil Transportation		98.94	
190320	ATHLETIC REPAIR SERVICE	12/30/2016	A70545-B	Pole vault pit reconditioning. See attached	7201600019	6,146.76	6,146.76
10 E 530 0100 28 5115 450 0000 0000				General Fund/Expenditures/Basic Education		6,146.76	
190321	AUTOZONE INC	12/30/2016	1174310637		0	16.28	16.28
10 E 530 9900 53 5000 073 0000 0000				General Fund/Expenditures/Pupil Transportation		16.28	
190322	AVANT ASSESSMENT LLC	12/30/2016	8605	STAMP 4S Bi-Literacy Assessments for students at Housel Middle School	6001600050	725.00	725.00
10 L 601 0000 00 0000 000 0000 0000				General Fund/Accounts Payable		-62.35	
10 E 530 0172 33 7000 060 0000 0000				General Fund/Expenditures/Districtwide Assessments		787.35	
190323	B & B EQUIPMENT	12/30/2016	16-302		0	57.71	57.71
10 E 530 9700 64 7000 074 0000 0000				General Fund/Expenditures/District-Wide Support		57.71	
190324	B & B TRAILERS LLC	12/30/2016	1587		0	271.50	271.50
10 E 530 9900 53 5000 073 0000 0000				General Fund/Expenditures/Pupil Transportation		271.50	
190325	BAKERIES, FRANZ FAMILY	12/30/2016	26011431901		0	114.24	1,171.80
10 E 530 9800 42 5420 075 0000 0000				General Fund/Expenditures/Food Service		114.24	
			26011432101		0	167.28	
10 E 530 9800 42 5420 075 0000 0000				General Fund/Expenditures/Food Service		167.28	
			26011432601		0	183.60	
10 E 530 9800 42 5420 075 0000 0000				General Fund/Expenditures/Food Service		183.60	
			26011433301		0	201.78	
10 E 530 9800 42 5420 075 0000 0000				General Fund/Expenditures/Food Service		201.78	
			26011433501		0	167.28	
10 E 530 9800 42 5420 075 0000 0000				General Fund/Expenditures/Food Service		167.28	
			26011434001		0	172.38	
10 E 530 9800 42 5420 075 0000 0000				General Fund/Expenditures/Food Service		172.38	
			26011434201		0	165.24	
10 E 530 9800 42 5420 075 0000 0000				General Fund/Expenditures/Food Service		165.24	
190326	BANK, U S	12/30/2016	7506 12/6/2016		0	1,982.57	1,982.57
10 E 530 0100 27 5000 240 0000 0000				General Fund/Expenditures/Basic Education		738.44	

Check Nbr	Vendor Name	Check Date	Invoice Number	Invoice Desc	PO Number	Invoice Amount	Check Amount
10 E 530 0100 27 5030 130 0000 0000				General Fund/Expenditures/Basic Education		32.57	
10 E 530 9700 11 5000 071 0000 0000				General Fund/Expenditures/District-Wide Support		153.67	
10 E 530 9700 12 8030 071 0000 0000				General Fund/Expenditures/District-Wide Support		667.82	
10 E 530 9730 72 7000 076 0000 0000				General Fund/Expenditures/Tech Coordinator - Office		300.00	
10 E 530 0172 27 5000 450 0000 0000				General Fund/Expenditures/Districtwide Assessments		34.62	
10 E 530 0100 21 5000 240 0000 0000				General Fund/Expenditures/Basic Education		55.45	
190327	BARB STROTE LLC	12/30/2016	1745	EAP Services	7201600000	255.00	255.00
10 E 530 9700 14 7410 072 0000 0000				General Fund/Expenditures/District-Wide Support		255.00	
190328	BATTERY SYSTEMS INC.	12/30/2016	3763431		0	324.66	508.59
10 E 530 9900 53 5000 073 0000 0000				General Fund/Expenditures/Pupil Transportation		324.66	
			3788984		0	183.93	
10 E 530 9900 53 5000 073 0000 0000				General Fund/Expenditures/Pupil Transportation		183.93	
190329	BELFOR PROPERTY RESTORATION	12/30/2016	874012		0	2,082.52	2,082.52
10 E 530 9700 64 7000 074 0000 0000				General Fund/Expenditures/District-Wide Support		2,082.52	
190330	BENDER, ANN C	12/30/2016	INTERNET NOV & DEC		0	93.98	187.96
10 E 530 9700 13 7000 072 0000 0000				General Fund/Expenditures/District-Wide Support		93.98	
			OCT & NOV INTERNET		0	93.98	
10 E 530 9700 13 7000 072 0000 0000				General Fund/Expenditures/District-Wide Support		93.98	
190331	BENTON COUNTY PUD	12/30/2016	0840400000- 12/6/16		0	27,304.14	27,304.14
10 E 530 9700 65 7820 055 0000 0000				General Fund/Expenditures/District-Wide Support		1,423.45	
10 E 530 9700 65 7820 063 0000 0000				General Fund/Expenditures/District-Wide Support		187.14	
10 E 530 9700 65 7820 092 0000 0000				General Fund/Expenditures/District-Wide Support		15.35	
10 E 530 9700 65 7820 073 0000 0000				General Fund/Expenditures/District-Wide Support		759.45	
10 E 530 9700 65 7820 074 0000 0000				General Fund/Expenditures/District-Wide Support		415.54	
10 E 530 9700 65 7820 110 0000 0000				General Fund/Expenditures/District-Wide Support		1,643.13	
10 E 530 9700 65 7820 120 0000 0000				General Fund/Expenditures/District-Wide Support		5,125.31	
10 E 530 9700 65 7820 130 0000 0000				General Fund/Expenditures/District-Wide Support		3,193.75	
10 E 530 9700 65 7820 240 0000 0000				General Fund/Expenditures/District-Wide Support		5,643.26	
10 E 530 9700 65 7820 450 0000 0000				General Fund/Expenditures/District-Wide Support		8,502.91	
10 E 530 9700 65 7820 482 0000 0000				General Fund/Expenditures/District-Wide Support		211.71	
10 E 530 9700 65 7820 060 0000 0000				General Fund/Expenditures/District-Wide Support		91.57	
10 E 530 9700 65 7820 076 0000 0000				General Fund/Expenditures/District-Wide Support		91.57	
190332	BENTON FRANKLIN HEALTH DEPT	12/30/2016	0301-2391 11/1/16		0	175.00	690.00
10 E 530 9800 44 7000 240 0000 0000				General Fund/Expenditures/Food Service		175.00	
			0301-2416 11/01/16		0	175.00	
10 E 530 9800 44 7000 120 0000 0000				General Fund/Expenditures/Food Service		175.00	
			0301-2663 11/01/16		0	85.00	
10 E 530 9800 44 7000 130 0000 0000				General Fund/Expenditures/Food Service		85.00	
			0301-2665 11-1-2016		0	85.00	

Check Nbr	Vendor Name	Check Date	Invoice Number	Invoice Desc	PO Number	Invoice Amount	Check Amount
10 E 530 9800 44 7000 450 0000 0000				General Fund/Expenditures/Food Service		85.00	
			0301-3258 11/01/16		0	85.00	
10 E 530 9800 44 7000 110 0000 0000				General Fund/Expenditures/Food Service		85.00	
			0309-13537 11/1/16		0	85.00	
10 E 530 9800 44 7000 482 0000 0000				General Fund/Expenditures/Food Service		85.00	
190333 BENTON REA		12/30/2016	11/30/2016		0	9.95	6,128.60
10 E 530 9700 13 7530 072 0000 0000				General Fund/Expenditures/District-Wide Support		9.95	
			107426		0	3,018.65	
10 E 530 9700 72 5000 076 0000 0000				General Fund/Expenditures/District-Wide Support		2,918.65	
10 E 530 9700 72 5030 076 0000 0000				General Fund/Expenditures/District-Wide Support		100.00	
			107442		0	3,100.00	
10 E 530 9700 72 7540 076 0000 0000				General Fund/Expenditures/District-Wide Support		3,100.00	
190334 BJ PAINT & CARPET INC		12/30/2016	77853		0	38.54	82.81
10 E 530 9700 63 5000 074 0000 0000				General Fund/Expenditures/District-Wide Support		38.54	
			77882		0	44.27	
10 E 530 9700 63 5000 074 0000 0000				General Fund/Expenditures/District-Wide Support		44.27	
190335 BLEYHL FARM SERVICE		12/30/2016	11/30/2016		0	11,252.07	11,511.84
10 E 530 7100 27 5900 450 0000 0000				General Fund/Expenditures/Traffic Safety		128.80	
10 E 530 9700 12 5900 071 0000 0000				General Fund/Expenditures/District-Wide Support		123.43	
10 E 530 9700 61 5900 074 0000 0000				General Fund/Expenditures/District-Wide Support		99.24	
10 E 530 9700 62 5900 074 0000 0000				General Fund/Expenditures/District-Wide Support		233.97	
10 E 530 9700 64 5900 074 0000 0000				General Fund/Expenditures/District-Wide Support		379.75	
10 E 530 9700 75 5900 073 0000 0000				General Fund/Expenditures/District-Wide Support		248.84	
10 E 530 9800 44 5900 075 0000 0000				General Fund/Expenditures/Food Service		169.79	
10 E 530 9900 51 5900 073 0000 0000				General Fund/Expenditures/Pupil Transportation		81.16	
10 E 530 9900 52 5900 073 0000 0000				General Fund/Expenditures/Pupil Transportation		9,759.99	
10 E 530 5320 27 5900 060 0000 0000				General Fund/Expenditures/Migrant Ed		27.10	
			2791		0	53.94	
10 E 530 9700 62 5000 450 0000 0000				General Fund/Expenditures/District-Wide Support		53.94	
			602776		0	205.83	
10 E 530 9700 62 5000 450 0000 0000				General Fund/Expenditures/District-Wide Support		205.83	
190336 BOLT, KIMBERLY A		12/30/2016	SELAH		0	57.24	114.48
10 E 530 9700 13 8030 072 0000 0000				General Fund/Expenditures/District-Wide Support		57.24	
			SELAH 11/17/2016		0	57.24	
10 E 530 9700 13 8030 072 0000 0000				General Fund/Expenditures/District-Wide Support		57.24	
190337 BROOKS, KATHY P		12/30/2016	CDL 2016		0	102.00	102.00
10 E 530 9900 52 7000 073 0000 0000				General Fund/Expenditures/Pupil Transportation		102.00	

Check Nbr	Vendor Name	Check Date	Invoice Number	Invoice Desc	PO Number	Invoice Amount	Check Amount
190338	BROWN'S TIRE CO	12/30/2016	74300102201		0	76.02	3,004.76
10 E 530 9900 53 5950 073 0000 0000				General Fund/Expenditures/Pupil Transportation		76.02	
			74300102664		0	330.37	
10 E 530 9700 75 5950 071 0000 0000				General Fund/Expenditures/District-Wide Support		330.37	
			74300102723		0	114.03	
10 E 530 9700 75 5950 075 0000 0000				General Fund/Expenditures/District-Wide Support		114.03	
			74300103196		0	514.37	
10 E 530 9900 53 5950 073 0000 0000				General Fund/Expenditures/Pupil Transportation		514.37	
			74300103336		0	625.71	
10 E 530 9700 64 5950 074 0000 0000				General Fund/Expenditures/District-Wide Support		625.71	
			74300103916		0	172.75	
10 E 530 9700 61 5950 074 0000 0000				General Fund/Expenditures/District-Wide Support		172.75	
			74300103976		0	1,115.75	
10 E 530 9900 53 5950 073 0000 0000				General Fund/Expenditures/Pupil Transportation		1,115.75	
			74300104383		0	55.76	
10 E 530 9700 62 5950 450 0000 0000				General Fund/Expenditures/District-Wide Support		55.76	
190339	BRYSON SALES & SERVICE	12/30/2016	249584		0	127.64	1,254.95
10 E 530 9900 53 5000 073 0000 0000				General Fund/Expenditures/Pupil Transportation		127.64	
			249934		0	125.78	
10 E 530 9900 53 5000 073 0000 0000				General Fund/Expenditures/Pupil Transportation		125.78	
			250025		0	196.28	
10 E 530 9900 53 5000 073 0000 0000				General Fund/Expenditures/Pupil Transportation		196.28	
			250113		0	150.75	
10 E 530 9900 53 5000 073 0000 0000				General Fund/Expenditures/Pupil Transportation		150.75	
			250183		0	654.50	
10 E 530 9900 53 5000 073 0000 0000				General Fund/Expenditures/Pupil Transportation		654.50	
190340	BUILDERS HARDWARE	12/30/2016	S3478069.001-		0	13.72	849.71
10 E 530 9700 64 5000 074 0000 0000				General Fund/Expenditures/District-Wide Support		13.72	
			S3523852.001		0	835.99	
10 E 530 9700 64 5000 074 0000 0000				General Fund/Expenditures/District-Wide Support		835.99	
190341	CAMPBELL, BLAKE S	12/30/2016	NOVEMBER 2016		0	36.18	36.18
10 E 530 9730 72 8010 076 0000 0000				General Fund/Expenditures/Tech Coordinator - Office		36.18	
190342	CAMPBELL OFFICE SUPPLY/YAKIMA	12/30/2016	242898-0		0	331.71	583.86
10 E 530 9800 44 5000 075 0000 0000				General Fund/Expenditures/Food Service		331.71	

Check Nbr	Vendor Name	Check Date	Invoice Number	Invoice Desc	PO Number	Invoice Amount	Check Amount
			243136-0	2016/2017 Open PO for District Office supplies.	7201600004	45.96	
10 E 530 9700 12 5000 071 0000 0000				General Fund/Expenditures/District-Wide Support		22.98	
10 E 530 9700 13 5000 072 0000 0000				General Fund/Expenditures/District-Wide Support		22.98	
			243721-0	2016/2017 Open PO for District Office supplies.	7201600004	117.46	
10 E 530 9700 12 5000 071 0000 0000				General Fund/Expenditures/District-Wide Support		58.73	
10 E 530 9700 13 5000 072 0000 0000				General Fund/Expenditures/District-Wide Support		58.73	
			243782-0	2016/2017 Open PO for District Office supplies.	7201600004	75.17	
10 E 530 9700 12 5000 071 0000 0000				General Fund/Expenditures/District-Wide Support		37.59	
10 E 530 9700 13 5000 072 0000 0000				General Fund/Expenditures/District-Wide Support		37.58	
			244167-0	2016/2017 Open PO for District Office supplies.	7201600004	13.56	
10 E 530 9700 12 5000 071 0000 0000				General Fund/Expenditures/District-Wide Support		6.78	
10 E 530 9700 13 5000 072 0000 0000				General Fund/Expenditures/District-Wide Support		6.78	
190343	CAMPBELL, KIPP J	12/30/2016	BOTHELL		0	350.00	350.00
10 E 530 0151 31 8030 120 0000 0000				General Fund/Expenditures/Staff Dev-PEA Allocation		350.00	
190344	CASCADE NATURAL GAS CO	12/30/2016	11/29/2016		0	10,053.92	10,053.92
10 E 530 9700 65 7840 450 0000 0000				General Fund/Expenditures/District-Wide Support		4,586.81	
10 E 530 9700 65 7840 450 0000 0000				General Fund/Expenditures/District-Wide Support		177.20	
10 E 530 9700 65 7840 073 0000 0000				General Fund/Expenditures/District-Wide Support		230.16	
10 E 530 9700 65 7840 450 0000 0000				General Fund/Expenditures/District-Wide Support		52.06	
10 E 530 9700 65 7840 450 0000 0000				General Fund/Expenditures/District-Wide Support		10.60	
10 E 530 9700 65 7840 120 0000 0000				General Fund/Expenditures/District-Wide Support		1,981.27	
10 E 530 9700 65 7840 240 0000 0000				General Fund/Expenditures/District-Wide Support		1,485.33	
10 E 530 9700 65 7840 130 0000 0000				General Fund/Expenditures/District-Wide Support		1,349.46	
10 E 530 9700 65 7840 450 0000 0000				General Fund/Expenditures/District-Wide Support		181.03	
190345	CASH & CARRY	12/30/2016	142879		1533	25.88	25.88
10 E 530 9800 42 5430 075 0000 0000				General Fund/Expenditures/Food Service		25.88	
190346	CDW GOVERNMENT INC	12/30/2016	GFD3918	Surface for Kris	7601600081	1,047.49	1,047.49
10 E 530 9700 72 5310 120 0000 0000				General Fund/Expenditures/District-Wide Support		1,047.49	
190347	CENGAGE LEARNING	12/30/2016	NO. 59444166	Online accounting software access	4561600017	195.48	195.48
10 E 530 3161 27 7000 450 0000 0000				General Fund/Expenditures/Business		195.48	
190348	CENTURY LINK	12/30/2016	1395378295		0	12.65	12.65
10 E 530 9700 65 7810 063 0000 0000				General Fund/Expenditures/District-Wide Support		1.90	

Check Nbr	Vendor Name	Check Date	Invoice Number	Invoice Desc	PO Number	Invoice Amount	Check Amount
10 E 530 9700 65 7810 072 0000 0000				General Fund/Expenditures/District-Wide Support		1.01	
10 E 530 9700 65 7810 073 0000 0000				General Fund/Expenditures/District-Wide Support		0.12	
10 E 530 9700 65 7810 074 0000 0000				General Fund/Expenditures/District-Wide Support		0.14	
10 E 530 9700 65 7810 120 0000 0000				General Fund/Expenditures/District-Wide Support		1.49	
10 E 530 9700 65 7810 130 0000 0000				General Fund/Expenditures/District-Wide Support		3.06	
10 E 530 9700 65 7810 240 0000 0000				General Fund/Expenditures/District-Wide Support		1.77	
10 E 530 9700 65 7810 450 0000 0000				General Fund/Expenditures/District-Wide Support		3.16	
190349	CH2O	12/30/2016	250449		0	184.78	184.78
10 E 530 9700 64 5000 074 0000 0000				General Fund/Expenditures/District-Wide Support		184.78	
190350	CHARTER COMMUNICATIONS	12/30/2016	8805160080125117	dec Open PO for cable service	2401600027	27.93	27.93
10 E 530 0100 23 7000 240 0000 0000				General Fund/Expenditures/Basic Education		27.93	
190351	CHEMPOINT.COM	12/30/2016	NA00510775		0	1,389.63	1,389.63
10 E 530 9700 64 7000 074 0000 0000				General Fund/Expenditures/District-Wide Support		1,389.63	
190352	CHILDERS, MARSHA RAE	12/30/2016	COTTON BALLS		0	77.58	77.58
10 E 530 0100 23 5000 120 0000 0000				General Fund/Expenditures/Basic Education		77.58	
190353	CI INFORMATION MANAGEMENT	12/30/2016	0039132	SHREDDING	1201600007	18.87	285.09
10 E 530 0100 27 5000 120 0000 0000				General Fund/Expenditures/Basic Education		18.87	
10 E 530 0135 23 7000 482 0000 0000			0039534	General Fund/Expenditures/Alt High School	0	19.89	19.89
10 E 530 0100 27 7000 240 0000 0000			0041411	Shredding service	2401600056	18.87	18.87
10 E 530 0100 27 7000 240 0000 0000			0041979	Shredding service	2401600056	18.87	18.87
10 E 530 0100 27 7000 240 0000 0000			0041980	Shredding service	2401600056	37.74	37.74
10 E 530 0100 27 5000 120 0000 0000			0041981	SHREDDING	1201600007	19.89	19.89
10 E 530 0100 27 7000 130 0000 0000			0041982	Shred Service for 2016-17	1301600011	37.74	37.74
10 E 530 0100 27 7000 130 0000 0000			0041983	Yearly Shred Service	7201600022	37.74	37.74
10 E 530 9700 13 7000 072 0000 0000			39530	Shredding Company for the Office-As	4501600051	56.61	56.61
10 E 530 0100 27 7000 450 0000 0000				General Fund/Expenditures/Basic Education		56.61	

Check Nbr	Vendor Name	Check Date	Invoice Number	Invoice Desc	PO Number	Invoice Amount	Check Amount
			41410	Sherd Service	1101600032	18.87	
10 E 530 0100 27 7000 110 0000 0000				General Fund/Expenditures/Basic Education		18.87	
190354	CITY OF PROSSER	12/30/2016	12/21/2016		0	10,816.50	10,816.50
10 E 530 9700 65 7850 482 0000 0000				General Fund/Expenditures/District-Wide Support		28.09	
10 E 530 9700 65 7860 482 0000 0000				General Fund/Expenditures/District-Wide Support		177.60	
10 E 530 9700 65 7870 482 0000 0000				General Fund/Expenditures/District-Wide Support		45.59	
10 E 530 9700 65 7880 482 0000 0000				General Fund/Expenditures/District-Wide Support		40.81	
10 E 530 9700 65 7850 450 0000 0000				General Fund/Expenditures/District-Wide Support		297.22	
10 E 530 9700 65 7860 450 0000 0000				General Fund/Expenditures/District-Wide Support		1,114.93	
10 E 530 9700 65 7870 450 0000 0000				General Fund/Expenditures/District-Wide Support		423.35	
10 E 530 9700 65 7880 450 0000 0000				General Fund/Expenditures/District-Wide Support		19.62	
10 E 530 9700 65 7850 450 0000 0000				General Fund/Expenditures/District-Wide Support		283.29	
10 E 530 9700 65 7870 450 0000 0000				General Fund/Expenditures/District-Wide Support		402.76	
10 E 530 9700 65 7880 450 0000 0000				General Fund/Expenditures/District-Wide Support		36.44	
10 E 530 9700 65 7850 450 0000 0000				General Fund/Expenditures/District-Wide Support		282.56	
10 E 530 9700 65 7870 450 0000 0000				General Fund/Expenditures/District-Wide Support		401.69	
10 E 530 9700 65 7850 450 0000 0000				General Fund/Expenditures/District-Wide Support		48.73	
10 E 530 9700 65 7850 450 0000 0000				General Fund/Expenditures/District-Wide Support		45.70	
10 E 530 9700 65 7860 450 0000 0000				General Fund/Expenditures/District-Wide Support		18.53	
10 E 530 9700 65 7870 450 0000 0000				General Fund/Expenditures/District-Wide Support		71.63	
10 E 530 9700 65 7880 450 0000 0000				General Fund/Expenditures/District-Wide Support		30.61	
10 E 530 9700 65 7880 055 0000 0000				General Fund/Expenditures/District-Wide Support		35.55	
10 E 530 9700 65 7850 055 0000 0000				General Fund/Expenditures/District-Wide Support		28.03	
10 E 530 9700 65 7850 063 0000 0000				General Fund/Expenditures/District-Wide Support		24.51	
10 E 530 9700 65 7860 063 0000 0000				General Fund/Expenditures/District-Wide Support		89.32	
10 E 530 9700 65 7870 063 0000 0000				General Fund/Expenditures/District-Wide Support		40.30	
10 E 530 9700 65 7880 063 0000 0000				General Fund/Expenditures/District-Wide Support		0.63	
10 E 530 9700 65 7850 120 0000 0000				General Fund/Expenditures/District-Wide Support		432.17	
10 E 530 9700 65 7860 120 0000 0000				General Fund/Expenditures/District-Wide Support		609.09	
10 E 530 9700 65 7870 120 0000 0000				General Fund/Expenditures/District-Wide Support		622.92	
10 E 530 9700 65 7880 120 0000 0000				General Fund/Expenditures/District-Wide Support		102.78	
10 E 530 9700 65 7850 073 0000 0000				General Fund/Expenditures/District-Wide Support		53.11	
10 E 530 9700 65 7860 073 0000 0000				General Fund/Expenditures/District-Wide Support		181.59	
10 E 530 9700 65 7870 073 0000 0000				General Fund/Expenditures/District-Wide Support		93.94	
10 E 530 9700 65 7850 055 0000 0000				General Fund/Expenditures/District-Wide Support		97.89	
10 E 530 9700 65 7870 055 0000 0000				General Fund/Expenditures/District-Wide Support		120.86	
10 E 530 9700 65 7850 240 0000 0000				General Fund/Expenditures/District-Wide Support		809.51	
10 E 530 9700 65 7860 240 0000 0000				General Fund/Expenditures/District-Wide Support		750.01	
10 E 530 9700 65 7870 240 0000 0000				General Fund/Expenditures/District-Wide Support		667.75	
10 E 530 9700 65 7880 240 0000 0000				General Fund/Expenditures/District-Wide Support		40.27	
10 E 530 9700 65 7880 240 0000 0000				General Fund/Expenditures/District-Wide Support		147.63	
10 E 530 9700 65 7850 074 0000 0000				General Fund/Expenditures/District-Wide Support		44.07	
10 E 530 9700 65 7860 074 0000 0000				General Fund/Expenditures/District-Wide Support		219.49	
10 E 530 9700 65 7870 074 0000 0000				General Fund/Expenditures/District-Wide Support		80.57	
10 E 530 9700 65 7880 055 0000 0000				General Fund/Expenditures/District-Wide Support		287.78	
10 E 530 9700 65 7880 055 0000 0000				General Fund/Expenditures/District-Wide Support		2.06	
10 E 530 9700 65 7880 055 0000 0000				General Fund/Expenditures/District-Wide Support		56.06	
10 E 530 9700 65 7880 055 0000 0000				General Fund/Expenditures/District-Wide Support		3.22	
10 E 530 9700 65 7880 055 0000 0000				General Fund/Expenditures/District-Wide Support		29.90	



Check Nbr	Vendor Name	Check Date	Invoice Number	Invoice Desc	PO Number	Invoice Amount	Check Amount
10 E 530 9700 65 7850 130 0000 0000				General Fund/Expenditures/District-Wide Support		238.29	
10 E 530 9700 65 7860 130 0000 0000				General Fund/Expenditures/District-Wide Support		385.10	
10 E 530 9700 65 7870 130 0000 0000				General Fund/Expenditures/District-Wide Support		336.22	
10 E 530 9700 65 7880 130 0000 0000				General Fund/Expenditures/District-Wide Support		8.93	
10 E 530 9700 65 7850 130 0000 0000				General Fund/Expenditures/District-Wide Support		84.10	
10 E 530 9700 65 7870 130 0000 0000				General Fund/Expenditures/District-Wide Support		139.76	
10 E 530 9700 65 7880 130 0000 0000				General Fund/Expenditures/District-Wide Support		121.47	
10 E 530 9700 65 7880 093 0000 0000				General Fund/Expenditures/District-Wide Support		50.37	
10 E 530 9700 65 7880 093 0000 0000				General Fund/Expenditures/District-Wide Support		3.60	
10 E 530 9700 65 7880 093 0000 0000				General Fund/Expenditures/District-Wide Support		8.50	
190355 CLASS 5		12/30/2016	32550		0	1,906.99	1,906.99
10 E 530 9700 65 7810 072 0000 0000				General Fund/Expenditures/District-Wide Support		1,906.99	
190356 COFFMAN, MARCIE R		12/30/2016	ESD		0	21.60	21.60
10 E 530 5210 31 8030 060 0000 0000				General Fund/Expenditures/Title II TQ - Part A		21.60	
190357 COMM/TECH		12/30/2016	09-3128	2 Portable Radios	1301600026	534.31	534.31
10 E 530 0100 27 5350 130 0000 0000				General Fund/Expenditures/Basic Education		534.31	
190358 COMMUNITIES IN SCHOOLS OF BENT		12/30/2016	DECEMBER 2, 2016		0	3,181.81	3,181.81
10 E 530 5100 24 7000 060 0000 0000				General Fund/Expenditures/Title I Part A		1,368.18	
10 E 530 0109 24 7000 071 0000 0000				General Fund/Expenditures/Substance Abuse Prevention		1,813.63	
190359 CONSOLIDATED ELECTRICAL DIST		12/30/2016	3627-569355		0	150.65	1,268.46
10 E 530 9700 64 5810 074 0000 0000				General Fund/Expenditures/District-Wide Support		150.65	
			3627-569616		0	180.41	
10 E 530 9700 64 5810 074 0000 0000				General Fund/Expenditures/District-Wide Support		180.41	
			3627-569666		0	25.89	
10 E 530 9700 64 5810 074 0000 0000				General Fund/Expenditures/District-Wide Support		25.89	
			3627-570152		0	911.51	
10 E 530 9700 64 5810 074 0000 0000				General Fund/Expenditures/District-Wide Support		911.51	
190360 CUMMINS INC		12/30/2016	013-96991		0	217.26	44.02
10 E 530 9900 53 5000 073 0000 0000				General Fund/Expenditures/Pupil Transportation		217.26	
			013-97023		0	-218.36	
10 E 530 9900 53 5000 073 0000 0000				General Fund/Expenditures/Pupil Transportation		-218.36	
			013-97088		0	45.12	
10 E 530 9900 53 5000 073 0000 0000				General Fund/Expenditures/Pupil Transportation		45.12	
190361 CURRICULUM ASSOCIATES INC		12/30/2016	90450236	Everyday Writers	1301600029	290.09	290.09
				Student Book for			
				3rd Grade			
10 E 530 0100 27 5000 130 0000 0000				General Fund/Expenditures/Basic Education		290.09	

Check Nbr	Vendor Name	Check Date	Invoice Number	Invoice Desc	PO Number	Invoice Amount	Check Amount
190362	D & L SUPPLY AND MFG	12/30/2016	326196		0	65.33	96.36
10 E 530 9700 64 5000 074 0000 0000				General Fund/Expenditures/District-Wide Support		65.33	
			326626		0	31.03	
10 E 530 9700 64 5000 074 0000 0000				General Fund/Expenditures/District-Wide Support		31.03	
190363	DELEON, DENISE I	12/30/2016	CDL 2016		0	102.00	102.00
10 E 530 9900 52 7000 073 0000 0000				General Fund/Expenditures/Pupil Transportation		102.00	
190364	DELL	12/30/2016	XK1TR7D53	Dell	7601600035	2,347.31	2,347.31
10 E 530 9700 72 7000 076 0000 0000				General Fund/Expenditures/District-Wide Support		2,347.31	
190365	DENCHEL FORD COUNTRY	12/30/2016	SEP31-1116	2016-2017 Drivers Ed Car rental	4501600014	250.00	250.00
10 E 530 7100 27 7000 450 0000 0000				General Fund/Expenditures/Traffic Safety		250.00	
190366	DEVORE, TRAVIS C	12/30/2016	TRAINING LUNCH		0	45.59	45.59
10 E 530 3151 21 5000 450 0000 0000				General Fund/Expenditures/Voc Director		45.59	
190367	DYNACCO	12/30/2016	90021		0	187.88	187.88
10 E 530 9700 63 5000 074 0000 0000				General Fund/Expenditures/District-Wide Support		187.88	
190368	EDWARDS, MARY RUTH	12/30/2016	CLASSROOM MANAGEMENT		0	225.00	225.00
10 E 530 0100 23 7000 110 0000 0000				General Fund/Expenditures/Basic Education		225.00	
190369	EKON-O-PAC	12/30/2016	58149		0	6,670.00	6,670.00
10 E 530 9800 44 5000 075 0000 0000				General Fund/Expenditures/Food Service		6,670.00	
190370	ENGRAVINGS UNLIMITED INC	12/30/2016	17P		0	100.00	100.00
10 E 530 9700 11 5000 071 0000 0000				General Fund/Expenditures/District-Wide Support		100.00	
190371	ESD #105	12/30/2016	51119		0	5,705.45	6,870.45
10 E 530 9700 25 7000 071 0000 0000				General Fund/Expenditures/District-Wide Support		5,705.45	
			51162		0	1,165.00	
10 E 530 6400 31 7000 110 0000 0000				General Fund/Expenditures/Limited English Proficien		1,165.00	
190372	ESD #123	12/30/2016	25430	CEL training for Kristal Cole & Bryan Bailey	6001600006	80.00	23,514.78
10 E 530 0155 31 7000 240 0000 0000				General Fund/Expenditures/FEAT		40.00	
10 E 530 0155 31 7000 450 0000 0000				General Fund/Expenditures/FEAT		40.00	
			25446	2016/2017 Open PO for Finger Printing	7201600014	78.00	
10 E 530 9700 14 7960 072 0000 0000				General Fund/Expenditures/District-Wide Support		78.00	
			25447	2016/2017 Open PO for Finger	7201600014	78.00	

Check Nbr	Vendor Name	Check Date	Invoice Number	Invoice Desc	PO Number	Invoice Amount	Check Amount
10 E 530 9700 14 7960 072 0000 0000				Printing General Fund/Expenditures/District-Wide Support		78.00	
			25448	2016/2017 Open PO for Finger Printing	7201600014	78.00	
10 E 530 9700 14 7960 072 0000 0000				General Fund/Expenditures/District-Wide Support		78.00	
			25455	Drug & Alcohol Testing	7301600002	580.00	
10 E 530 9900 52 7960 073 0000 0000				General Fund/Expenditures/Pupil Transportation		580.00	
			25474		0	22,620.78	
10 E 530 2100 26 7000 063 0000 0000				General Fund/Expenditures/Spec Ed - State		22,620.78	
190373 FOOD DEPOT		12/30/2016	167705		1435	2.19	305.23
10 E 530 3160 27 5000 450 0000 0000				General Fund/Expenditures/Agriculture		2.19	
			167707		1531	50.20	
10 E 530 9800 42 5430 075 0000 0000				General Fund/Expenditures/Food Service		50.20	
			167708		1532	12.00	
10 E 530 9800 42 5430 075 0000 0000				General Fund/Expenditures/Food Service		12.00	
			167710		9493	50.00	
10 E 530 5104 27 5000 060 0000 0000				General Fund/Expenditures/Title I-Homeless		50.00	
			167755		28	96.00	
10 E 530 5320 27 5000 240 0000 0000				General Fund/Expenditures/Migrant Ed		96.00	
			167761		1436	28.14	
10 E 530 3160 27 5000 450 0000 0000				General Fund/Expenditures/Agriculture		28.14	
			167763		1027	41.88	
10 E 530 9700 12 5000 071 0000 0000				General Fund/Expenditures/District-Wide Support		41.88	
			167766		1437	24.82	
10 E 530 3160 27 5000 450 0000 0000				General Fund/Expenditures/Agriculture		24.82	
190374 FOOD SERVICES OF AMERICA		12/30/2016	7455340		0	-12.50	24,160.84
10 E 530 9897 42 5430 075 0000 0000				General Fund/Expenditures/Food Services-Catering		-12.50	
			7506946		0	1,347.82	
10 E 530 9800 44 5910 075 0000 0000				General Fund/Expenditures/Food Service		1,347.82	
			7506948		0	1,645.27	
10 E 530 9800 42 5440 075 0000 0000				General Fund/Expenditures/Food Service		1,645.27	
			7506949		0	4,246.07	
10 E 530 9800 42 5430 075 0000 0000				General Fund/Expenditures/Food Service		4,246.07	

Check Nbr	Vendor Name	Check Date	Invoice Number	Invoice Desc	PO Number	Invoice Amount	Check Amount
10 E 530 9800 44 5000 075 0000 0000			7506951	General Fund/Expenditures/Food Service	0	180.76	180.76
10 E 530 9897 42 5430 075 0000 0000			7506952	General Fund/Expenditures/Food Services-Catering	0	63.70	63.70
10 E 530 9800 44 5000 075 0000 0000			7506953	General Fund/Expenditures/Food Service	0	162.35	162.35
10 E 530 9800 42 5430 075 0000 0000			7511766	General Fund/Expenditures/Food Service	0	-46.76	-46.76
10 E 530 9800 42 5430 075 0000 0000			7532723	General Fund/Expenditures/Food Service	0	193.36	193.36
10 E 530 9800 44 5910 075 0000 0000			7532725	General Fund/Expenditures/Food Service	0	560.48	560.48
10 E 530 9800 42 5440 075 0000 0000			7532726	General Fund/Expenditures/Food Service	0	4,442.59	4,442.59
10 E 530 9800 42 5430 075 0000 0000			7532729	General Fund/Expenditures/Food Service	0	1,070.70	1,070.70
10 E 530 9800 42 5430 075 0000 0000			7532730	General Fund/Expenditures/Food Service	0	5,494.60	5,494.60
10 E 530 9800 42 5430 075 0000 0000			7538789	General Fund/Expenditures/Food Service	0	1,412.84	1,412.84
10 E 530 9800 44 5910 075 0000 0000			7546686	General Fund/Expenditures/Food Service	0	677.03	677.03
10 E 530 9800 42 5440 075 0000 0000			7546687	General Fund/Expenditures/Food Service	0	591.69	591.69
10 E 530 9800 42 5430 075 0000 0000			7546688	General Fund/Expenditures/Food Service	0	1,647.09	1,647.09
10 E 530 9800 42 5440 075 0000 0000			7546689	General Fund/Expenditures/Food Service	0	205.14	205.14
10 E 530 9897 42 5430 075 0000 0000			7546690	General Fund/Expenditures/Food Services-Catering	0	63.70	63.70
10 E 530 9800 44 5470 075 0000 0000			7546691	General Fund/Expenditures/Food Service	0	163.01	163.01
10 E 530 9800 42 5430 075 0000 0000			7546692	General Fund/Expenditures/Food Service	0	51.90	51.90

Check Nbr	Vendor Name	Check Date	Invoice Number	Invoice Desc	PO Number	Invoice Amount	Check Amount
190375	FP MAILING SOLUTIONS	12/30/2016	RI102915062-	Postage Meter Invoice #RI102915062	6301600039	32.74	176.09
10 E 530 2100 21 7000 063 0000 0000				General Fund/Expenditures/Spec Ed - State		32.74	
			RI103043202	Postage meter	7201600018	143.35	
10 E 530 9700 13 7000 072 0000 0000				General Fund/Expenditures/District-Wide Support		143.35	
190376	GALLEGOS, JESSE C	12/30/2016	NOVEMBER 2016		0	23.44	23.44
10 E 530 2100 26 8010 063 0000 0000				General Fund/Expenditures/Spec Ed - State		23.44	
190377	GOLDEN HORSE	12/30/2016	11/28/16		0	127.61	127.61
10 E 530 5320 24 5000 060 0000 0000				General Fund/Expenditures/Migrant Ed		127.61	
190378	GRAINGER	12/30/2016	9279088158		0	100.24	301.16
10 E 530 9700 64 5000 074 0000 0000				General Fund/Expenditures/District-Wide Support		100.24	
			9282919118		0	200.92	
10 E 530 9700 64 5000 074 0000 0000				General Fund/Expenditures/District-Wide Support		200.92	
190379	GRANDVIEW LUMBER	12/30/2016	294983	Wood Shop Supplies	4561600018	495.43	495.43
10 E 530 3160 27 5000 450 0000 0000				General Fund/Expenditures/Agriculture		495.43	
190380	GREGORY, LARRY F	12/30/2016	298		0	285.70	285.70
10 E 530 9700 12 7010 071 0000 0000				General Fund/Expenditures/District-Wide Support		285.70	
190381	GUILFORD PUBLICATIONS INC	12/30/2016	1105714	BOOKS FOR GROUP STUDY.	1101600030	336.00	336.00
10 E 530 0100 23 5000 110 0000 0000				General Fund/Expenditures/Basic Education		364.90	
10 L 601 0000 00 0000 000 0000 0000				General Fund/Accounts Payable		-28.90	
190382	H & H AUTO	12/30/2016	S0061635		0	237.28	272.35
10 E 530 9900 53 7000 073 0000 0000				General Fund/Expenditures/Pupil Transportation		237.28	
			S0061716		0	35.07	
10 E 530 9900 53 7000 073 0000 0000				General Fund/Expenditures/Pupil Transportation		35.07	
190383	HALL CHEVROLET BUICK	12/30/2016	5020374		0	75.72	75.72
10 E 530 9700 64 5000 074 0000 0000				General Fund/Expenditures/District-Wide Support		75.72	
190384	Vendor Continued Void	12/30/2016					0.00
190385	COOK'S ACE HARDWARE	12/30/2016	A378937		0	85.13	1,788.62
10 E 530 9700 63 5000 074 0000 0000				General Fund/Expenditures/District-Wide Support		85.13	
			A379198		0	35.82	
10 E 530 9700 62 5000 074 0000 0000				General Fund/Expenditures/District-Wide Support		35.82	
			A379381		0	39.09	
10 E 530 9900 53 5000 073 0000 0000				General Fund/Expenditures/Pupil Transportation		39.09	

Check Nbr	Vendor Name	Check Date	Invoice Number	Invoice Desc	PO Number	Invoice Amount	Check Amount
10 E 530 9700 62 5000 074 0000 0000			A379966	General Fund/Expenditures/District-Wide Support	0	21.90	21.90
10 E 530 9700 63 5000 074 0000 0000			A380090	General Fund/Expenditures/District-Wide Support	0	70.96	70.96
10 E 530 9700 64 5000 074 0000 0000			A380098	General Fund/Expenditures/District-Wide Support	0	16.29	16.29
10 E 530 9700 62 5000 074 0000 0000			A380107	General Fund/Expenditures/District-Wide Support	0	13.03	13.03
10 E 530 9700 64 5000 074 0000 0000			A380721	General Fund/Expenditures/District-Wide Support	0	19.53	19.53
10 E 530 9700 64 5000 074 0000 0000			A380748	General Fund/Expenditures/District-Wide Support	0	24.96	24.96
10 E 530 9700 64 5000 074 0000 0000			A380796	General Fund/Expenditures/District-Wide Support	0	5.60	5.60
10 E 530 9700 64 5000 074 0000 0000			A380802	General Fund/Expenditures/District-Wide Support	0	6.82	6.82
10 E 530 9700 64 5000 074 0000 0000			A380867	General Fund/Expenditures/District-Wide Support	0	10.85	10.85
10 E 530 9700 62 5000 074 0000 0000			A381051	General Fund/Expenditures/District-Wide Support	0	18.45	18.45
10 E 530 9700 62 5000 074 0000 0000			A381243	General Fund/Expenditures/District-Wide Support	0	37.55	37.55
10 E 530 9700 64 5000 074 0000 0000			A381312	General Fund/Expenditures/District-Wide Support	0	21.70	21.70
10 E 530 9700 64 5000 074 0000 0000			A381313	General Fund/Expenditures/District-Wide Support	0	-10.85	-10.85
10 E 530 9700 64 5000 074 0000 0000			A381364	General Fund/Expenditures/District-Wide Support	0	42.92	42.92
10 E 530 9700 63 5000 074 0000 0000			A381398	General Fund/Expenditures/District-Wide Support	0	144.98	144.98
10 E 530 9700 64 5000 074 0000 0000			A381471	General Fund/Expenditures/District-Wide Support	0	33.64	33.64
10 E 530 9700 64 5000 074 0000 0000			A382101	General Fund/Expenditures/District-Wide Support	0	141.16	141.16

Check Nbr	Vendor Name	Check Date	Invoice Number	Invoice Desc	PO Number	Invoice Amount	Check Amount
10 E 530 9700 64 5000 074 0000 0000			A382255	General Fund/Expenditures/District-Wide Support	0	2.16	2.16
10 E 530 9700 64 5000 074 0000 0000			A382311	General Fund/Expenditures/District-Wide Support	0	38.43	38.43
10 E 530 9700 64 5000 074 0000 0000			A382335	General Fund/Expenditures/District-Wide Support	0	8.00	8.00
10 E 530 9700 62 5000 074 0000 0000			A382356	General Fund/Expenditures/District-Wide Support	0	19.54	19.54
10 E 530 9700 64 5000 074 0000 0000			A382411	General Fund/Expenditures/District-Wide Support	0	4.33	4.33
10 E 530 9700 64 5000 074 0000 0000			A383160	General Fund/Expenditures/District-Wide Support	0	4.32	4.32
10 E 530 9700 62 5000 074 0000 0000			A383511	General Fund/Expenditures/District-Wide Support	0	4.98	4.98
10 E 530 9700 64 5000 074 0000 0000			A383543	General Fund/Expenditures/District-Wide Support	0	19.54	19.54
10 E 530 9700 62 5000 074 0000 0000			A383611	General Fund/Expenditures/District-Wide Support	0	41.44	41.44
10 E 530 9900 53 5000 073 0000 0000			A383738	General Fund/Expenditures/Pupil Transportation	0	40.66	40.66
10 E 530 9900 53 5000 073 0000 0000			A384200	General Fund/Expenditures/Pupil Transportation	0	85.73	85.73
10 E 530 9700 64 5000 074 0000 0000			A384280	General Fund/Expenditures/District-Wide Support	0	16.27	16.27
10 E 530 9700 64 5000 074 0000 0000			A384358	General Fund/Expenditures/District-Wide Support	0	16.28	16.28
10 E 530 9700 64 5000 074 0000 0000			A384386	General Fund/Expenditures/District-Wide Support	0	28.21	28.21
10 E 530 9700 64 5000 074 0000 0000			A384392	General Fund/Expenditures/District-Wide Support	0	16.49	16.49
10 E 530 9700 64 5000 074 0000 0000			A384520	General Fund/Expenditures/District-Wide Support	0	3.03	3.03
			A384573	Open PO for PHS CTE Supplies	4561600001	-110.67	-110.67

Check Nbr	Vendor Name	Check Date	Invoice Number	Invoice Desc	PO Number	Invoice Amount	Check Amount
10 E 530 3160 27 5000 450 0000 0000				General Fund/Expenditures/Agriculture		-55.34	
10 E 530 3167 27 5000 450 0000 0000				General Fund/Expenditures/Technology Education		-55.33	
			A384679		0	2.80	
10 E 530 9700 64 5000 074 0000 0000				General Fund/Expenditures/District-Wide Support		2.80	
			A384716		0	9.33	
10 E 530 9700 62 5000 074 0000 0000				General Fund/Expenditures/District-Wide Support		9.33	
			A384808	Open PO for PHS CTE Supplies	4561600001	32.10	
10 E 530 3160 27 5000 450 0000 0000				General Fund/Expenditures/Agriculture		16.05	
10 E 530 3167 27 5000 450 0000 0000				General Fund/Expenditures/Technology Education		16.05	
			A384843	Open PO for PHS CTE Supplies	4561600001	10.85	
10 E 530 3160 27 5000 450 0000 0000				General Fund/Expenditures/Agriculture		5.43	
10 E 530 3167 27 5000 450 0000 0000				General Fund/Expenditures/Technology Education		5.42	
			A385315		0	57.54	
10 E 530 9900 53 5000 073 0000 0000				General Fund/Expenditures/Pupil Transportation		57.54	
			A385391		0	8.68	
10 E 530 9700 64 5000 074 0000 0000				General Fund/Expenditures/District-Wide Support		8.68	
			A385607	Open PO for PHS CTE Supplies	4561600001	132.45	
10 E 530 3160 27 5000 450 0000 0000				General Fund/Expenditures/Agriculture		66.23	
10 E 530 3167 27 5000 450 0000 0000				General Fund/Expenditures/Technology Education		66.22	
			A386121	Open PO for PHS CTE Supplies	4561600001	120.63	
10 E 530 3160 27 5000 450 0000 0000				General Fund/Expenditures/Agriculture		60.32	
10 E 530 3167 27 5000 450 0000 0000				General Fund/Expenditures/Technology Education		60.31	
			B356541		0	41.52	
10 E 530 9700 63 5000 074 0000 0000				General Fund/Expenditures/District-Wide Support		41.52	
			B358727		0	8.68	
10 E 530 9900 53 5000 073 0000 0000				General Fund/Expenditures/Pupil Transportation		8.68	
			B361570		0	29.29	
10 E 530 9700 62 5000 074 0000 0000				General Fund/Expenditures/District-Wide Support		29.29	
			C2486		0	12.78	
10 E 530 9700 62 5000 074 0000 0000				General Fund/Expenditures/District-Wide Support		12.78	
			C2725		0	49.92	
10 E 530 9700 62 5000 074 0000 0000				General Fund/Expenditures/District-Wide Support		49.92	



Check Nbr	Vendor Name	Check Date	Invoice Number	Invoice Desc	PO Number	Invoice Amount	Check Amount
			C3175	Open PO for PHS CTE Supplies	4561600001	67.21	
10 E 530 3160 27 5000 450 0000 0000				General Fund/Expenditures/Agriculture		33.61	
10 E 530 3167 27 5000 450 0000 0000				General Fund/Expenditures/Technology Education		33.60	
			C3250		0	3.90	
10 E 530 9700 64 5000 074 0000 0000				General Fund/Expenditures/District-Wide Support		3.90	
			C3306	Open PO for PHS CTE Supplies	4561600001	57.94	
10 E 530 3160 27 5000 450 0000 0000				General Fund/Expenditures/Agriculture		28.97	
10 E 530 3167 27 5000 450 0000 0000				General Fund/Expenditures/Technology Education		28.97	
			C3334		0	54.29	
10 E 530 9700 64 5000 074 0000 0000				General Fund/Expenditures/District-Wide Support		54.29	
			C3404	Open PO for PHS CTE Supplies	4561600001	70.44	
10 E 530 3160 27 5000 450 0000 0000				General Fund/Expenditures/Agriculture		35.22	
10 E 530 3167 27 5000 450 0000 0000				General Fund/Expenditures/Technology Education		35.22	
190386 HOUGHTON MIFFLIN		12/30/2016	952839055	Algebra 2 Renewal License-AS	4501600071	195.48	195.48
10 E 530 0145 33 5070 450 0000 0000				General Fund/Expenditures/Instructional Materials		195.48	
190387 HUDNALL, RALPH W.		12/30/2016	EWU FIELD TRIP		0	96.43	96.43
10 E 530 5320 27 5000 450 0000 0000				General Fund/Expenditures/Migrant Ed		96.43	
190388 HUGHES, GARY L.		12/30/2016	WENATCHEE 2016		0	161.28	161.28
10 E 530 7100 27 8030 450 0000 0000				General Fund/Expenditures/Traffic Safety		161.28	
190389 HYATT, JULIE A		12/30/2016	LANYARDS		0	15.13	15.13
10 E 530 9700 11 5000 071 0000 0000				General Fund/Expenditures/District-Wide Support		15.13	
190390 IBS INCORPORATED		12/30/2016	631092-1		0	482.88	482.88
10 E 530 9900 53 5000 073 0000 0000				General Fund/Expenditures/Pupil Transportation		482.88	
190391 IMPERIAL SUPPLIES LLC		12/30/2016	OH0994		0	126.50	126.50
10 E 530 9900 53 5000 073 0000 0000				General Fund/Expenditures/Pupil Transportation		126.50	
190392 IRRIGATION SPECIALISTS INC		12/30/2016	3192131-01		0	18.55	36.14
10 E 530 9700 62 7000 074 0000 0000				General Fund/Expenditures/District-Wide Support		18.55	
			3192268-01		0	17.59	
10 E 530 9700 62 5000 074 0000 0000				General Fund/Expenditures/District-Wide Support		17.59	
190393 JAIME, DANYELLE M		12/30/2016	TRAVEL NOVEMBER		0	53.78	53.78
10 E 530 9730 72 8010 076 0000 0000				General Fund/Expenditures/Tech Coordinator - Office		53.78	
190394 JEREMYS 1896 PUBLIC HOUSE		12/30/2016	12/15/2016		680	56.45	56.45

Check Nbr	Vendor Name	Check Date	Invoice Number	Invoice Desc	PO Number	Invoice Amount	Check Amount
10 E 530 0113 23 5000 450 0000 0000				General Fund/Expenditures/Computer/Technology		56.45	
190395	JOHNSTONE SUPPLY CO	12/30/2016	20334444-00		0	47.21	47.21
10 E 530 9700 64 5000 074 0000 0000				General Fund/Expenditures/District-Wide Support		47.21	
190396	K C D A	12/30/2016	300107042	Open PO for CTE Supplies	4561600000	35.58	92.54
10 E 530 3160 27 5000 450 0000 0000				General Fund/Expenditures/Agriculture		12.45	
10 E 530 3161 27 5000 450 0000 0000				General Fund/Expenditures/Business		12.45	
10 E 530 3165 27 5000 450 0000 0000				General Fund/Expenditures/Home/Family		5.34	
10 E 530 3167 27 5000 450 0000 0000				General Fund/Expenditures/Technology Education		5.34	
			300110273	Ball Pump	1101600036	56.96	
10 E 530 0100 27 5000 110 0000 0000				General Fund/Expenditures/Basic Education		56.96	
190397	KATHRYN KARSCHNEY	12/30/2016	November 2016		0	5,200.00	5,200.00
10 E 530 0187 31 7000 060 0000 0000				General Fund/Expenditures/Text Adoption		5,200.00	
190398	KIRK, LINDA W	12/30/2016	SUPPLIES 11/14/16		0	67.35	67.35
10 E 530 0100 26 5000 064 0000 0000				General Fund/Expenditures/Basic Education		67.35	
190399	KONE INC	12/30/2016	949485546		0	3,290.19	3,290.19
10 E 530 9700 64 7900 450 0000 0000				General Fund/Expenditures/District-Wide Support		3,290.19	
190400	LAB-AIDS	12/30/2016	00120060	Open PO for CASE Supplies	4561600004	274.64	274.64
10 E 530 3160 27 5000 450 0000 0000				General Fund/Expenditures/Agriculture		274.64	
190401	LADINES, JON	12/30/2016	12/14/2016		0	1,500.00	1,500.00
10 E 530 9700 12 7000 071 0000 0000				General Fund/Expenditures/District-Wide Support		1,500.00	
190402	LANE, CYNTHIA M.	12/30/2016	NOV. 2016		0	65.07	65.07
10 E 530 2200 26 8010 063 0000 0000				General Fund/Expenditures/Spec Ed Infants & Toddlers		65.07	
190403	LEADER SERVICES	12/30/2016	WA09522		0	8.40	8.40
10 E 530 2100 27 7000 063 0000 0000				General Fund/Expenditures/Spec Ed - State		8.40	
190404	LEMKE, DEBORAH A	12/30/2016	supplies 12/1/2016		0	60.36	60.36
10 E 530 0115 27 5000 110 0000 0000				General Fund/Expenditures/1st Grade		60.36	
190405	LINDEBLAD, KRISTINE	12/30/2016	Nov & Dec 2016		0	4,692.74	9,620.54
10 E 530 0187 31 7000 060 0000 0000				General Fund/Expenditures/Text Adoption		4,692.74	
			October 2016		0	4,927.80	
10 E 530 0187 31 7000 060 0000 0000				General Fund/Expenditures/Text Adoption		4,927.80	
190406	LINK, CENTURY	12/30/2016	12/6/2016		0	1,110.88	1,110.88
10 E 530 9700 65 7810 075 0000 0000				General Fund/Expenditures/District-Wide Support		52.73	
10 E 530 9700 65 7810 073 0000 0000				General Fund/Expenditures/District-Wide Support		50.26	
10 E 530 9700 65 7810 130 0000 0000				General Fund/Expenditures/District-Wide Support		55.61	

Check Nbr	Vendor Name	Check Date	Invoice Number	Invoice Desc	PO Number	Invoice Amount	Check Amount
10 E 530 9700 65 7810 450 0000 0000				General Fund/Expenditures/District-Wide Support		54.15	
10 E 530 9700 65 7810 073 0000 0000				General Fund/Expenditures/District-Wide Support		65.83	
10 E 530 9700 65 7810 240 0000 0000				General Fund/Expenditures/District-Wide Support		0.00	
10 E 530 9700 65 7810 240 0000 0000				General Fund/Expenditures/District-Wide Support		52.73	
10 E 530 9700 65 7810 074 0000 0000				General Fund/Expenditures/District-Wide Support		0.00	
10 E 530 9700 65 7810 072 0000 0000				General Fund/Expenditures/District-Wide Support		162.45	
10 E 530 9700 65 7810 120 0000 0000				General Fund/Expenditures/District-Wide Support		105.46	
10 E 530 9700 65 7810 076 0000 0000				General Fund/Expenditures/District-Wide Support		27.07	
10 E 530 9700 65 7810 060 0000 0000				General Fund/Expenditures/District-Wide Support		27.08	
10 E 530 9700 65 7810 450 0000 0000				General Fund/Expenditures/District-Wide Support		246.59	
10 E 530 9700 65 7810 130 0000 0000				General Fund/Expenditures/District-Wide Support		52.73	
10 E 530 9700 65 7810 482 0000 0000				General Fund/Expenditures/District-Wide Support		105.46	
10 E 530 9700 65 7810 063 0000 0000				General Fund/Expenditures/District-Wide Support		0.00	
10 E 530 9700 65 7810 120 0000 0000				General Fund/Expenditures/District-Wide Support		0.00	
10 E 530 9700 65 7810 240 0000 0000				General Fund/Expenditures/District-Wide Support		52.73	
10 E 530 9700 65 7810 110 0000 0000				General Fund/Expenditures/District-Wide Support		0.00	
190407 LINK, CENTURY		12/30/2016	320497728 12/2/16		0	31.16	31.16
10 E 530 9700 65 7810 072 0000 0000				General Fund/Expenditures/District-Wide Support		31.16	
190408 LINKONLEARNING		12/30/2016	EPcom-PROSS2016100	Curriculum for R, Walker	6301600020	814.50	814.50
10 E 530 2100 27 5070 450 0000 0000				General Fund/Expenditures/Spec Ed - State		814.50	
190409 LOCKSHOP		12/30/2016	10/18/16		0	56.11	373.88
10 E 530 9700 64 5000 074 0000 0000				General Fund/Expenditures/District-Wide Support		56.11	
			11/21/16		0	317.77	
10 E 530 9700 64 5000 074 0000 0000				General Fund/Expenditures/District-Wide Support		317.77	
190410 MALDONADO, GUADALUPE		12/30/2016	TRAVEL 11/29/2016		0	7.99	7.99
10 E 530 9700 13 8010 072 0000 0000				General Fund/Expenditures/District-Wide Support		7.99	
190411 MALDONADO, LUPE		12/30/2016	TRANSLATION 12/7/16		0	202.40	202.40
10 E 530 0100 21 7120 060 0000 0000				General Fund/Expenditures/Basic Education		202.40	
190412 MENKE JACKSON LAW FIRM		12/30/2016	405 11/30/2016		0	5,607.10	5,607.10
10 E 530 9700 11 7030 071 0000 0000				General Fund/Expenditures/District-Wide Support		5,607.10	
190413 MID-AMERICAN RESEARCH CHEMICAL		12/30/2016	0594888-IN		0	822.83	822.83
10 E 530 9700 63 5000 074 0000 0000				General Fund/Expenditures/District-Wide Support		822.83	
190414 MIKE'S HOME APPLIANCE REPAIR		12/30/2016	3917		0	81.45	81.45
10 E 530 9700 64 7000 450 0000 0000				General Fund/Expenditures/District-Wide Support		81.45	
190415 MILLER, DANIELLE M		12/30/2016	OCT & NOV 2016		0	65.88	65.88
10 E 530 2100 26 8010 063 0000 0000				General Fund/Expenditures/Spec Ed - State		65.88	
190416 MOON SECURITY SERVICES INC		12/30/2016	846923	2016/2017 Annual contract for:	7201600009	1,114.22	1,363.28

Check Nbr	Vendor Name	Check Date	Invoice Number	Invoice Desc	PO Number	Invoice Amount	Check Amount
10 E 530 9700 64 7910 450 0000 0000				video and monitoring of PHS facilities			
			General Fund/Expenditures/District-Wide Support			1,114.22	
			852431	2016/2017 Annual contract for: video and monitoring of PHS facilities	7201600009	249.06	
10 E 530 9700 64 7910 450 0000 0000			General Fund/Expenditures/District-Wide Support			249.06	
190417 MOORE, KRISTINE		12/30/2016	SUPPLIES 11/28/16		0	40.76	40.76
10 E 530 0100 23 5000 120 0000 0000			General Fund/Expenditures/Basic Education			40.76	
190418 NATIONAL COUNCIL OF ENGLISH TE		12/30/2016	3035275	NCTE Membership and Journals for Michelle Hall	2401600060	75.00	75.00
10 E 530 0151 31 7390 240 0000 0000			General Fund/Expenditures/Staff Dev-PEA Allocation			75.00	
190419 NC MACHINERY		12/30/2016	YKCS0341613		0	103.23	103.23
10 E 530 9900 53 5000 073 0000 0000			General Fund/Expenditures/Pupil Transportation			103.23	
190420 OFFICE DEPOT INC		12/30/2016	881783979001	Printer for PHS	7601600071	134.11	1,406.94
10 E 530 0100 27 5000 450 0000 0000			General Fund/Expenditures/Basic Education			134.11	
			881783986001	Printers	7601600074	134.11	
10 E 530 9700 72 5320 076 0000 0000			General Fund/Expenditures/District-Wide Support			14.85	
10 E 530 9700 72 5320 450 0000 0000			General Fund/Expenditures/District-Wide Support			119.26	
			881783986002	Printers	7601600074	1,077.05	
10 E 530 9700 72 5320 076 0000 0000			General Fund/Expenditures/District-Wide Support			119.26	
10 E 530 9700 72 5320 450 0000 0000			General Fund/Expenditures/District-Wide Support			957.79	
			881924591001	SCHILPEROORT/OFFICE	1201600027	11.21	
10 E 530 0100 24 5000 120 0000 0000			General Fund/Expenditures/Basic Education			6.87	
10 E 530 0100 27 5000 120 0000 0000			General Fund/Expenditures/Basic Education			4.34	
			881924662001	SCHILPEROORT/OFFICE	1201600027	50.46	
10 E 530 0100 24 5000 120 0000 0000			General Fund/Expenditures/Basic Education			30.93	
10 E 530 0100 27 5000 120 0000 0000			General Fund/Expenditures/Basic Education			19.53	
190421 OXARC INC		12/30/2016	R455464	Open PO for Metal Shop Supplies	4561600002	146.58	378.89
10 E 530 3160 27 5000 450 0000 0000			General Fund/Expenditures/Agriculture			146.58	
			SYC7261	Open PO for Metal Shop Supplies	4561600002	112.67	

Check Nbr	Vendor Name	Check Date	Invoice Number	Invoice Desc	PO Number	Invoice Amount	Check Amount
10 E 530 3160 27 5000 450 0000 0000				General Fund/Expenditures/Agriculture		112.67	
			SYC7514	Open PO for Metal Shop Supplies	4561600002	119.64	
10 E 530 3160 27 5000 450 0000 0000				General Fund/Expenditures/Agriculture		119.64	
190422	PACIFIC OFFICE AUTOMATION	12/30/2016	447830	Toner cartridge for Main Office and Library	4501600069	69.50	69.50
10 E 530 0100 27 5000 450 0000 0000				General Fund/Expenditures/Basic Education		69.50	
190423	PC & MAC EXCHANGE	12/30/2016	107917	Headphones	7601600077	360.00	360.00
10 L 601 0000 00 0000 000 0000 0000				General Fund/Accounts Payable		-30.96	
10 E 530 0197 27 5070 450 0000 0000				General Fund/Expenditures/Credit Retrieval		390.96	
190424	PEARSON, TRACY D	12/30/2016	SAW BLADE		0	9.74	9.74
10 E 530 3160 27 5000 450 0000 0000				General Fund/Expenditures/Agriculture		9.74	
190425	PHILLIPS66/CONOCO/76	12/30/2016	12/1/2016		0	47.01	47.01
10 E 530 9700 75 5000 073 0000 0000				General Fund/Expenditures/District-Wide Support		47.01	
190426	PINNACLE INVESTIGATION CORP	12/30/2016	53916	2016/2017 Open PO Client Service agreement	7201600010	87.00	242.28
10 E 530 9700 14 7000 072 0000 0000				General Fund/Expenditures/District-Wide Support		87.00	
			54098	2016/2017 Open PO Client Service agreement	7201600010	155.28	
10 E 530 9700 14 7000 072 0000 0000				General Fund/Expenditures/District-Wide Support		155.28	
190427	PLATT	12/30/2016	K811683		0	279.61	279.61
10 E 530 9700 64 5810 074 0000 0000				General Fund/Expenditures/District-Wide Support		279.61	
190428	PROSSER NAPA	12/30/2016	457662		0	10.10	1,278.66
10 E 530 9900 53 5000 073 0000 0000				General Fund/Expenditures/Pupil Transportation		10.10	
			457938		0	31.84	
10 E 530 9900 53 5000 073 0000 0000				General Fund/Expenditures/Pupil Transportation		31.84	
			458014		0	39.52	
10 E 530 9700 75 5000 073 0000 0000				General Fund/Expenditures/District-Wide Support		39.52	
			458034		0	41.70	
10 E 530 9900 53 5000 073 0000 0000				General Fund/Expenditures/Pupil Transportation		41.70	
			458048		0	49.98	
10 E 530 9900 53 5000 073 0000 0000				General Fund/Expenditures/Pupil Transportation		49.98	
			458050		0	57.33	

Check Nbr	Vendor Name	Check Date	Invoice Number	Invoice Desc	PO Number	Invoice Amount	Check Amount
10 E 530 9900 53 5000 073 0000 0000				General Fund/Expenditures/Pupil Transportation		57.33	
			458051		0	48.67	
10 E 530 9900 53 5000 073 0000 0000				General Fund/Expenditures/Pupil Transportation		48.67	
			458052		0	48.67	
10 E 530 9900 53 5000 073 0000 0000				General Fund/Expenditures/Pupil Transportation		48.67	
			458053		0	23.13	
10 E 530 9900 53 5000 073 0000 0000				General Fund/Expenditures/Pupil Transportation		23.13	
			458246		0	563.35	
10 E 530 9900 53 5000 073 0000 0000				General Fund/Expenditures/Pupil Transportation		563.35	
			458247		0	317.98	
10 E 530 9900 53 5000 073 0000 0000				General Fund/Expenditures/Pupil Transportation		317.98	
			458248		0	-156.38	
10 E 530 9900 53 5000 073 0000 0000				General Fund/Expenditures/Pupil Transportation		-156.38	
			458436		0	34.67	
10 E 530 9900 53 5000 073 0000 0000				General Fund/Expenditures/Pupil Transportation		34.67	
			458608		0	66.51	
10 E 530 9700 64 5000 074 0000 0000				General Fund/Expenditures/District-Wide Support		66.51	
			458613		0	23.52	
10 E 530 9900 53 5000 073 0000 0000				General Fund/Expenditures/Pupil Transportation		23.52	
			458614		0	78.07	
10 E 530 9900 53 5000 073 0000 0000				General Fund/Expenditures/Pupil Transportation		78.07	
190429 PROSSER RENTALS		12/30/2016	A10829		0	15.12	15.12
10 E 530 9700 62 5000 074 0000 0000				General Fund/Expenditures/District-Wide Support		15.12	
190430 RAINWATER INC		12/30/2016	022793	2016/2017 RAINWATER (WATER DISPENSER) CONTRACT FOR PROSSER FALLS	4821600003	6.00	30.00
10 E 530 0135 27 7000 482 0000 0000				General Fund/Expenditures/Alt High School		6.00	
			050023	2016-2017 Annual contract Renewal for Curriculum/Technol ogy/Migrant Offices	6001600024	6.00	
10 E 530 0100 21 7000 060 0000 0000				General Fund/Expenditures/Basic Education		2.00	
10 E 530 5320 24 5000 060 0000 0000				General Fund/Expenditures/Migrant Ed		2.00	

Check Nbr	Vendor Name	Check Date	Invoice Number	Invoice Desc	PO Number	Invoice Amount	Check Amount
10 E 530 9730 72 7000 076 0000 0000				General Fund/Expenditures/Tech Coordinator - Office		2.00	
			213825	2016-2017 Annual contract Renewal for Curriculum/Technology/Migrant Offices	6001600024	18.00	
10 E 530 0100 21 7000 060 0000 0000				General Fund/Expenditures/Basic Education		6.00	
10 E 530 5320 24 5000 060 0000 0000				General Fund/Expenditures/Migrant Ed		6.00	
10 E 530 9730 72 7000 076 0000 0000				General Fund/Expenditures/Tech Coordinator - Office		6.00	
190431 REYES, MARTHA		12/30/2016	NOV 2016 WSU		0	313.20	313.20
10 E 530 5895 31 8030 060 0000 0000				General Fund/Expenditures/ALTERNATE ROAD TO TEACHING		313.20	
190432 RIDGEVIEW ORCHARDS		12/30/2016	2016-16		0	622.80	1,856.70
10 E 530 9800 42 5440 075 0000 0000				General Fund/Expenditures/Food Service		622.80	
			2016-17		0	613.80	
10 E 530 9800 42 5440 075 0000 0000				General Fund/Expenditures/Food Service		613.80	
			2016-18		0	620.10	
10 E 530 9800 42 5440 075 0000 0000				General Fund/Expenditures/Food Service		620.10	
190433 RIVERA, CAROL LEE		12/30/2016	SPEAK PROJECT		0	46.64	46.64
10 E 530 0100 27 5000 450 0000 0000				General Fund/Expenditures/Basic Education		46.64	
190434 RIVERSIDE STORAGE		12/30/2016	DECEMBER 2016	2016/2017 Rentals of storage units.	7201600008	537.00	537.00
10 E 530 2100 21 7340 063 0000 0000				General Fund/Expenditures/Spec Ed - State		134.00	
10 E 530 5320 27 7000 060 0000 0000				General Fund/Expenditures/Migrant Ed		55.00	
10 E 530 9700 13 7340 072 0000 0000				General Fund/Expenditures/District-Wide Support		112.00	
10 E 530 9700 64 7340 074 0000 0000				General Fund/Expenditures/District-Wide Support		79.00	
10 E 530 9700 72 7340 076 0000 0000				General Fund/Expenditures/District-Wide Support		157.00	
190435 RODDA, TERESA L		12/30/2016	CLOCK HOURS		0	231.95	359.25
10 E 530 0151 31 7000 450 0000 0000				General Fund/Expenditures/Staff Dev-PEA Allocation		231.95	
			QUICK LADDER		0	127.30	
10 E 530 0100 27 5000 450 0000 0000				General Fund/Expenditures/Basic Education		127.30	
190436 SAFEWAY		12/30/2016	71001380040		0	29.99	48.99
10 E 530 9700 11 5000 071 0000 0000				General Fund/Expenditures/District-Wide Support		29.99	
			90001382261		0	19.00	
10 E 530 9800 42 5430 075 0000 0000				General Fund/Expenditures/Food Service		19.00	
190437 SCHETKY NW SALES INC		12/30/2016	1153		0	219.75	267.34
10 E 530 9900 53 5000 073 0000 0000				General Fund/Expenditures/Pupil Transportation		219.75	

Check Nbr	Vendor Name	Check Date	Invoice Number	Invoice Desc	PO Number	Invoice Amount	Check Amount
			1156		0	47.59	
10 E 530 9900 53 5000 073 0000 0000				General Fund/Expenditures/Pupil Transportation		47.59	
190438	SCHOOL DIST #116 REVOLV FUND	12/30/2016	4490		0	3,100.00	3,100.00
10 E 530 0199 21 7000 072 0000 0000				General Fund/Expenditures/Reserve		3,100.00	
190439	SCHOOLFIX.COM	12/30/2016	166088	Janitorial Cart for Custodian-As	4501600032	303.96	303.96
10 E 530 0100 27 5000 450 0000 0000				General Fund/Expenditures/Basic Education		330.10	
10 L 601 0000 00 0000 000 0000 0000				General Fund/Accounts Payable		-26.14	
190440	SCHOOLWIDE	12/30/2016	357667	ELA Adoption Materials for Heights Elementary School - 4th Grade Classroom	6001600010	14.36	14.36
10 L 601 0000 00 0000 000 0000 0000				General Fund/Accounts Payable		-1.23	
10 E 530 0187 27 5070 130 0000 0000				General Fund/Expenditures/Text Adoption		15.59	
190441	SCREENING MIMIES	12/30/2016	5430		0	129.84	129.84
10 E 530 9700 11 5000 071 0000 0000				General Fund/Expenditures/District-Wide Support		129.84	
190442	SE WA CHAPTER WAPT	12/30/2016	16/17 MEMBERSHIP	BILL PETERSEN & CINDY MCLEMORE	0	70.00	70.00
10 E 530 9900 51 7000 073 0000 0000				General Fund/Expenditures/Pupil Transportation		70.00	
190443	SERDAHL, NICHOLAS D	12/30/2016	SUPPLIES 12/6/2016		0	199.21	199.21
10 E 530 0117 27 5000 110 0000 0000				General Fund/Expenditures/3rd Grade		199.21	
190444	SHOPKO STORES OPERATING CO., L	12/30/2016	12/2/16 240277		1026	18.98	18.98
10 E 530 9700 13 5000 072 0000 0000				General Fund/Expenditures/District-Wide Support		18.98	
190445	SIX ROBBLEES INC	12/30/2016	3-625137		0	182.43	1,363.31
10 E 530 9900 53 5000 073 0000 0000				General Fund/Expenditures/Pupil Transportation		182.43	
			3-625333		0	371.80	
10 E 530 9900 53 5000 073 0000 0000				General Fund/Expenditures/Pupil Transportation		371.80	
			3-625959		0	146.25	
10 E 530 9900 53 5000 073 0000 0000				General Fund/Expenditures/Pupil Transportation		146.25	
			3-625963		0	662.83	
10 E 530 9900 53 5000 073 0000 0000				General Fund/Expenditures/Pupil Transportation		662.83	
190446	SLONECKER, ANDREA C	12/30/2016	WAGON		0	136.84	136.84
10 E 530 2100 27 5000 063 0000 0000				General Fund/Expenditures/Spec Ed - State		136.84	
190447	SMITH, BRIAN R	12/30/2016	CENTRALIA		0	308.88	308.88
10 E 530 3167 27 8030 450 0000 0000				General Fund/Expenditures/Technology Education		308.88	



Check Nbr	Vendor Name	Check Date	Invoice Number	Invoice Desc	PO Number	Invoice Amount	Check Amount
190448	SMITH, DEAN DONALD	12/30/2016	BOOK 12/7/17		0	32.57	91.98
10 E 530 0100 27 5000 240 0000 0000			General Fund/Expenditures/Basic Education			32.57	
			GLOGSTER		0	22.25	
10 E 530 0151 31 5000 240 0000 0000			General Fund/Expenditures/Staff Dev-PEA Allocation			22.25	
			STAMPS		0	30.40	
10 E 530 0100 27 5000 240 0000 0000			General Fund/Expenditures/Basic Education			30.40	
			SUPPLIES 12/1/16		0	6.76	
10 E 530 0151 31 5000 240 0000 0000			General Fund/Expenditures/Staff Dev-PEA Allocation			6.76	
190449	SMITH, JOSHUA	12/30/2016	TRAINING 11/14/16		0	200.00	200.00
10 E 530 0100 25 7000 450 0000 0000			General Fund/Expenditures/Basic Education			200.00	
190450	STAPLES BUSINESS ADVANTAGE	12/30/2016	3322606820	Math Department Supplies, S. Colgren	4501600046	77.43	654.66
10 E 530 0100 27 5000 450 0000 0000			General Fund/Expenditures/Basic Education			77.43	
			3322606821	4 Sustainable Earth by Staples (R) Remanufactured Laser Toner Cartridge, HP 80A (CF280A), Black 2 HP 85A Toner Cartridges, Black, 2/Pack (CE285D) \$101.43 PK/2 2 \$202.86 1 MasterVision (R) Dry Erase Quad-Pod Presentation Easel Board, Aluminum Frame, 27"W x 35"H	4821600004	476.86	
10 E 530 0135 27 5000 482 0000 0000			General Fund/Expenditures/Alt High School			476.86	
10 E 530 0135 27 5300 482 0000 0000			General Fund/Expenditures/Alt High School			0.00	
			3322606822	Supplies for Teachers and SS Office	6301600015	-99.37	
10 E 530 2100 21 5000 063 0000 0000			General Fund/Expenditures/Spec Ed - State			-99.37	
			3322606823	Supplies for Staff	6301600043	113.92	
10 E 530 2100 26 5000 063 0000 0000			General Fund/Expenditures/Spec Ed - State			113.92	

Check Nbr	Vendor Name	Check Date	Invoice Number	Invoice Desc	PO Number	Invoice Amount	Check Amount
			3322606824	Supplies for SLP	6301600047	85.82	
10 E 530 2100 26 5000 120 0000 0000				General Fund/Expenditures/Spec Ed - State		85.82	
190451	STARK, NANETTE L	12/30/2016	MEMBERSHIP		0	129.00	129.00
10 E 530 0100 24 7390 450 0000 0000				General Fund/Expenditures/Basic Education		129.00	
190452	STATE OF WASHINGTON DEPT OF LI	12/30/2016	320		0	13.00	26.00
10 E 530 9700 75 5000 071 0000 0000				General Fund/Expenditures/District-Wide Support		13.00	
			321		0	13.00	
10 E 530 9700 75 5000 071 0000 0000				General Fund/Expenditures/District-Wide Support		13.00	
190453	SUPER DUPER PUBLICATIONS	12/30/2016	2206315A	Mini Mouth Puppet	6301600034	17.45	17.45
10 E 530 2100 26 5000 120 0000 0000				General Fund/Expenditures/Spec Ed - State		18.95	
10 L 601 0000 00 0000 000 0000 0000				General Fund/Accounts Payable		-1.50	
190454	SUPPLYWORKS	12/30/2016	383254257		0	15.66	12,092.61
10 E 530 9700 63 5000 074 0000 0000				General Fund/Expenditures/District-Wide Support		15.66	
			383254265		0	76.82	
10 E 530 9700 63 5000 074 0000 0000				General Fund/Expenditures/District-Wide Support		76.82	
			383254273		0	1,496.76	
10 E 530 9700 63 5000 074 0000 0000				General Fund/Expenditures/District-Wide Support		1,496.76	
			383377488		0	390.96	
10 E 530 9700 63 5000 074 0000 0000				General Fund/Expenditures/District-Wide Support		390.96	
			383921822		0	1,221.83	
10 E 530 9700 63 5000 074 0000 0000				General Fund/Expenditures/District-Wide Support		1,221.83	
			384458295		0	2,482.37	
10 E 530 9700 63 5000 074 0000 0000				General Fund/Expenditures/District-Wide Support		2,482.37	
			384458303		0	192.39	
10 E 530 9700 63 5000 074 0000 0000				General Fund/Expenditures/District-Wide Support		192.39	
			384961355		0	804.72	
10 E 530 9700 63 5000 074 0000 0000				General Fund/Expenditures/District-Wide Support		804.72	
			385332481		0	414.80	
10 E 530 9700 63 5000 074 0000 0000				General Fund/Expenditures/District-Wide Support		414.80	
			385454764		0	971.76	
10 E 530 9700 63 5000 074 0000 0000				General Fund/Expenditures/District-Wide Support		971.76	
			386173355		0	3,959.90	
10 E 530 9700 63 5000 074 0000 0000				General Fund/Expenditures/District-Wide Support		3,959.90	
			386173363		0	64.64	

Check Nbr	Vendor Name	Check Date	Invoice Number	Invoice Desc	PO Number	Invoice Amount	Check Amount
10 E 530 9700 63 5000 074 0000 0000				General Fund/Expenditures/District-Wide Support		64.64	
190455	T & M BOS, INC	12/30/2016	21641		0	865.98	865.98
10 E 530 9800 44 5970 075 0000 0000				General Fund/Expenditures/Food Service		865.98	
190456	TERRY'S DAIRY	12/30/2016	113057-		0	550.96	7,529.39
10 E 530 9800 42 5410 075 0000 0000				General Fund/Expenditures/Food Service		550.96	
			131261		0	282.35	
10 E 530 9800 42 5410 075 0000 0000				General Fund/Expenditures/Food Service		282.35	
			131262		0	625.42	
10 E 530 9800 42 5410 075 0000 0000				General Fund/Expenditures/Food Service		625.42	
			131264		0	196.30	
10 E 530 9800 42 5410 075 0000 0000				General Fund/Expenditures/Food Service		196.30	
			131265		0	20.32	
10 E 530 9800 42 5410 075 0000 0000				General Fund/Expenditures/Food Service		20.32	
			133519		0	196.30	
10 E 530 9800 42 5410 075 0000 0000				General Fund/Expenditures/Food Service		196.30	
			133520		0	122.76	
10 E 530 9800 42 5410 075 0000 0000				General Fund/Expenditures/Food Service		122.76	
			133521		0	416.84	
10 E 530 9800 42 5410 075 0000 0000				General Fund/Expenditures/Food Service		416.84	
			134373		0	196.30	
10 E 530 9800 42 5410 075 0000 0000				General Fund/Expenditures/Food Service		196.30	
			134374		0	613.15	
10 E 530 9800 42 5410 075 0000 0000				General Fund/Expenditures/Food Service		613.15	
			134375		0	319.02	
10 E 530 9800 42 5410 075 0000 0000				General Fund/Expenditures/Food Service		319.02	
			135708A		0	858.67	
10 E 530 9800 42 5410 075 0000 0000				General Fund/Expenditures/Food Service		858.67	
			135709A		0	10.16	
10 E 530 9800 42 5410 075 0000 0000				General Fund/Expenditures/Food Service		10.16	
			135714		0	233.09	
10 E 530 9800 42 5410 075 0000 0000				General Fund/Expenditures/Food Service		233.09	
			135715		0	196.30	
10 E 530 9800 42 5410 075 0000 0000				General Fund/Expenditures/Food Service		196.30	

Check Nbr	Vendor Name	Check Date	Invoice Number	Invoice Desc	PO Number	Invoice Amount	Check Amount
10 E 530 9800 42 5410 075 0000 0000			137156A	General Fund/Expenditures/Food Service	0	748.14	748.14
10 E 530 9800 42 5410 075 0000 0000			137157A	General Fund/Expenditures/Food Service	0	32.64	32.64
10 E 530 9800 42 5410 075 0000 0000			137158A	General Fund/Expenditures/Food Service	0	206.39	206.39
10 E 530 9800 42 5410 075 0000 0000			137159A	General Fund/Expenditures/Food Service	0	219.28	219.28
10 E 530 9800 42 5410 075 0000 0000			137948A	General Fund/Expenditures/Food Service	0	208.00	208.00
10 E 530 9800 42 5410 075 0000 0000			137950A	General Fund/Expenditures/Food Service	0	952.10	952.10
10 E 530 9800 42 5410 075 0000 0000			137951A	General Fund/Expenditures/Food Service	0	324.90	324.90
190457	THE PRINT GUYS	12/30/2016	107293	Forms for School Nurses	6401600006	534.09	762.42
10 E 530 0100 26 5000 064 0000 0000				General Fund/Expenditures/Basic Education		534.09	
10 E 530 0100 27 5000 110 0000 0000			107530	General Fund/Expenditures/Basic Education	0	228.33	228.33
190458	THE SUPPLY COMPANY LLC	12/30/2016	424568		0	87.72	87.72
10 E 530 9900 52 5000 073 0000 0000				General Fund/Expenditures/Pupil Transportation		87.72	
190459	THOMPSON AUDIOLOGY & HEARING C	12/30/2016	46190		0	40.00	40.00
10 E 530 0100 26 5000 064 0000 0000				General Fund/Expenditures/Basic Education		40.00	
190460	TINSLEY WELDING	12/30/2016	5761		0	69.62	69.62
10 E 530 9900 53 5000 073 0000 0000				General Fund/Expenditures/Pupil Transportation		69.62	
190461	TONY'S ALBRECHT GLASS INC	12/30/2016	3554030		0	43.44	43.44
10 E 530 9700 62 7000 074 0000 0000				General Fund/Expenditures/District-Wide Support		43.44	
190462	TREAT, LACEY S	12/30/2016	SUPPLIES 11/21/16		0	60.27	60.27
10 E 530 0114 27 5000 120 0000 0000				General Fund/Expenditures/Kindergarten		60.27	
190463	TRUMP, DENINE R	12/30/2016	SUPPLIES 11/28/16		0	126.24	126.24
10 E 530 3160 27 5000 450 0000 0000				General Fund/Expenditures/Agriculture		126.24	
190464	TUBAC, ELIZABETH C	12/30/2016	HERITAGE		0	43.20	43.20
10 E 530 7930 31 8030 450 0000 0000				General Fund/Expenditures/BRIDGE TO COLLEGE		43.20	
190465	U S BANK EQUIPMENT FINANCE	12/30/2016	319146791		0	7,427.17	7,427.17

Check Nbr	Vendor Name	Check Date	Invoice Number	Invoice Desc	PO Number	Invoice Amount	Check Amount	
10 E 530 9700 73 7290 110 0000 0000				General Fund/Expenditures/District-Wide Support		418.89		
10 E 530 9700 73 7290 120 0000 0000				General Fund/Expenditures/District-Wide Support		932.11		
10 E 530 9700 73 7290 130 0000 0000				General Fund/Expenditures/District-Wide Support		837.04		
10 E 530 9700 73 7290 240 0000 0000				General Fund/Expenditures/District-Wide Support		1,229.20		
10 E 530 9700 73 7290 450 0000 0000				General Fund/Expenditures/District-Wide Support		1,673.34		
10 E 530 3151 21 7290 450 0000 0000				General Fund/Expenditures/Voc Director		334.97		
10 E 530 2100 21 7290 063 0000 0000				General Fund/Expenditures/Spec Ed - State		418.89		
10 E 530 9700 13 7290 072 0000 0000				General Fund/Expenditures/District-Wide Support		418.89		
10 E 530 0135 27 7290 482 0000 0000				General Fund/Expenditures/Alt High School		308.23		
10 E 530 0100 21 7290 060 0000 0000				General Fund/Expenditures/Basic Education		198.31		
10 E 530 9730 72 7290 076 0000 0000				General Fund/Expenditures/Tech Coordinator - Office		198.31		
10 E 530 9900 51 7290 073 0000 0000				General Fund/Expenditures/Pupil Transportation		260.69		
10 E 530 5320 24 7290 060 0000 0000				General Fund/Expenditures/Migrant Ed		198.30		
190466 VALLEY WATER SERVICES		12/30/2016	11378			0	187.50	187.50
10 E 530 9700 64 7000 110 0000 0000				General Fund/Expenditures/District-Wide Support			187.50	
190467 VINE TECH EQUIPMENT LLC		12/30/2016	64160			0	46.65	46.65
10 E 530 9700 62 5000 074 0000 0000				General Fund/Expenditures/District-Wide Support			46.65	
190468 WAL-MART COMMUNITY		12/30/2016	632600461083	Materials for FCS Class	2401600038		9.80	263.63
10 R 960 0000 21 2100 240 0000 0000				General Fund/Revenues/Program 00			9.80	
			633400781318	Materials for FCS Class	2401600038		31.38	
10 R 960 0000 21 2100 240 0000 0000				General Fund/Revenues/Program 00			31.38	
			634200076763			0	222.45	
10 E 530 5320 24 5000 060 0000 0000				General Fund/Expenditures/Migrant Ed			222.45	
190469 WALDMAN'S PRODUCE		12/30/2016	10591			0	942.25	4,037.25
10 E 530 9800 42 5440 075 0000 0000				General Fund/Expenditures/Food Service			942.25	
			10671			0	729.55	
10 E 530 9800 42 5440 075 0000 0000				General Fund/Expenditures/Food Service			729.55	
			10718			0	1,134.85	
10 E 530 9800 42 5440 075 0000 0000				General Fund/Expenditures/Food Service			1,134.85	
			10808			0	1,230.60	
10 E 530 9800 42 5440 075 0000 0000				General Fund/Expenditures/Food Service			1,230.60	
190470 WALTER E NELSON COMPANY		12/30/2016	320526			0	128.65	307.19
10 E 530 9700 63 5000 074 0000 0000				General Fund/Expenditures/District-Wide Support			128.65	
			320645			0	178.54	
10 E 530 9700 63 5000 074 0000 0000				General Fund/Expenditures/District-Wide Support			178.54	
190471 WARDS		12/30/2016	000215645	Open PO for CASE	4561600003		-567.08	668.28

Check Nbr	Vendor Name	Check Date	Invoice Number	Invoice Desc	PO Number	Invoice Amount	Check Amount
10 E 530 3160 27 5000 450 0000 0000				Supplies General Fund/Expenditures/Agriculture		-567.08	
			8046897211	Open PO for CASE Supplies	4561600003	1,139.74	
10 E 530 3160 27 5000 450 0000 0000				General Fund/Expenditures/Agriculture		1,139.74	
			8046905237	Open PO for CASE Supplies	4561600003	60.32	
10 E 530 3160 27 5000 450 0000 0000				General Fund/Expenditures/Agriculture		60.32	
			8046933003	Open PO for CASE Supplies	4561600003	35.30	
10 E 530 3160 27 5000 450 0000 0000				General Fund/Expenditures/Agriculture		35.30	
190472	WEAVER EXTERMINATING	12/30/2016	564395-		0	15.48	949.44
10 E 530 9700 64 7700 450 0000 0000				General Fund/Expenditures/District-Wide Support		15.48	
			564787		0	195.48	
10 E 530 9700 64 7700 450 0000 0000				General Fund/Expenditures/District-Wide Support		195.48	
			564788		0	103.17	
10 E 530 9700 64 7700 110 0000 0000				General Fund/Expenditures/District-Wide Support		103.17	
			564790		0	97.74	
10 E 530 9700 64 7700 120 0000 0000				General Fund/Expenditures/District-Wide Support		97.74	
			565047		0	97.74	
10 E 530 9700 64 7700 120 0000 0000				General Fund/Expenditures/District-Wide Support		97.74	
			565049		0	195.48	
10 E 530 9700 64 7700 450 0000 0000				General Fund/Expenditures/District-Wide Support		195.48	
			565051		0	81.45	
10 E 530 9700 64 7700 240 0000 0000				General Fund/Expenditures/District-Wide Support		81.45	
			565052		0	162.90	
10 E 530 9700 64 7700 073 0000 0000				General Fund/Expenditures/District-Wide Support		162.90	
190473	WILES, CRAIG PHILLIP	12/30/2016	BOOK REFUND		0	20.00	20.00
10 R 960 0000 26 2600 130 0000 0000				General Fund/Revenues/Program 00		20.00	
190474	WLA	12/30/2016	1130352		0	75.00	75.00
10 E 530 0100 22 7390 060 0000 0000				General Fund/Expenditures/Basic Education		75.00	
190475	WSIPC	12/30/2016	1001600609	IEP Online for Special Ed Dept	6301600018	9,274.88	9,274.88
10 E 530 2100 21 7000 063 0000 0000				General Fund/Expenditures/Spec Ed - State		9,274.88	
190476	YVCC	12/30/2016	FALL GTR 2016		0	18,646.20	18,646.20

Check Nbr	Vendor Name	Check Date	Invoice Number	Invoice Desc	PO Number	Invoice Amount	Check Amount
10 E 530 0179 27 7000 072 0000 0000				General Fund/Expenditures/Running Start		16,574.38	
10 E 530 3151 27 7450 450 0000 0000				General Fund/Expenditures/Voc Director		2,071.82	
			164	Computer	Check(s) For a Total of		279,707.72

The following vouchers, as audited and certified by the Auditing Officer as required by RCW 42.24.080, and those expense reimbursement claims certified as required by RCW 42.24.090, are approved for payment. Those payments have been recorded on this listing which has been made available to the board.

As of December 27, 2016, the board, by a \_\_\_\_\_ vote, approves payments, totaling \$35,656.66. The payments are further identified in this document.

Total by Payment Type for Cash Account, ASB WARRANTS PAYABLE:  
Warrant Numbers 184633 through 184669, totaling \$35,656.66

Secretary _____	Board Member _____
Board Member _____	Board Member _____
Board Member _____	Board Member _____

Check Nbr	Vendor Name	Check Date	Check Amount
184633	APPELGATE, WENDY S	12/30/2016	36.63
184634	BANK, U S	12/30/2016	1,953.72
184635	BAROCIO, ARMANDINA	12/30/2016	49.80
184636	DAMAGED EAR	12/30/2016	3,025.00
184637	DORSETT, JENNIFER	12/30/2016	208.84
184638	EPCO INC / IN STITCHES	12/30/2016	3,282.01
184639	FOOD DEPOT	12/30/2016	248.91
184640	FOOD SERVICES OF AMERICA	12/30/2016	473.96
184641	GILBERTSON, KALI J	12/30/2016	85.67
184642	GREAT AMERICAN OPPORTUNITIES I	12/30/2016	1,090.00
184643	GRIMES HORTICULTURE	12/30/2016	767.03
184644	HOLIDAY INN EXPRESS PULLMAN	12/30/2016	3,043.60
184645	HOUSEL MIDDLE SCHOOL IMPREST	12/30/2016	436.52
184646	IDENTI-TEES	12/30/2016	822.10
184647	JEREMYS 1896 PUBLIC HOUSE	12/30/2016	184.62
184648	KENNEWICK HIGH SCHOOL	12/30/2016	450.00
184649	KIMMEL ATHLETIC SUPPLY	12/30/2016	3,027.98
184650	LEMKE, DEBORAH A	12/30/2016	28.29
184651	MCCULLOUGH, PATRICK A	12/30/2016	207.20
184652	MCMURTREY, JENNIFER L	12/30/2016	15.00
184653	NORTHWEST CHOICE FUNDRAISING	12/30/2016	550.00
184654	OMNI CHEER	12/30/2016	428.18
184655	PEPSI COLA YAKIMA	12/30/2016	674.42
184656	PROSSER HIGH SCHOOL IMPREST	12/30/2016	8,949.99
184657	SHY'S PIZZA CONNECTION	12/30/2016	347.52
184658	SKEEN, ANGELA P	12/30/2016	120.70
184659	SKILLS USA INC	12/30/2016	588.00
184660	STARR, KIMBERLY A	12/30/2016	665.75
184661	TCSOA	12/30/2016	2,127.00
184662	UP FRONT FOOTWEAR INC	12/30/2016	143.80
184663	URM CASH & CARRY	12/30/2016	782.48
184664	US GAMES	12/30/2016	91.79
184665	VALLEY LANES	12/30/2016	354.25



Check Nbr	Vendor Name	Check Date	Check Amount
184666	VALLEY SEPTIC SERVICE LLC	12/30/2016	59.00
184667	WESTERN SCALE INC	12/30/2016	162.90
184668	WHITSTRAN ELEM IMPREST FUND	12/30/2016	39.00
184669	WSSAAA TREASURER	12/30/2016	135.00
37	Computer	Check(s) For a Total of	35,656.66

Check Nbr	Vendor Name	Check Date	Invoice Number	Invoice Desc	PO Number	Invoice Amount	Check Amount
184633	APPELGATE, WENDY S	12/30/2016	WATER		0	36.63	36.63
40 E 530 1040 01 0000 000 0000 0000			Associated Student Body Fund/Expenditures/GENERAL			36.63	
184634	BANK, U S	12/30/2016	HUDL		0	1,953.72	1,953.72
40 E 530 2010 05 0000 000 0000 0000			Associated Student Body Fund/Expenditures/CONTEST MGT			1,953.72	
184635	BAROCIO, ARMANDINA	12/30/2016	11/27/2016 TRAVEL		0	37.80	49.80
40 E 530 1200 05 0000 000 0000 0000			Associated Student Body Fund/Expenditures/CONCESSIONS			37.80	
			CHIPS 12/05/2016		0	12.00	
40 E 530 1200 05 0000 000 0000 0000			Associated Student Body Fund/Expenditures/CONCESSIONS			12.00	
184636	DAMAGED EAR	12/30/2016	31938	Wrestling Uniforms	4521600117	1,520.00	3,025.00
40 E 530 2170 05 0000 000 0000 0000			Associated Student Body Fund/Expenditures/WRESTLING			1,650.72	
40 L 601 0000 00 0000 000 0000 0000			Associated Student Body Fund/Accounts Payable			-130.72	
			31939	Wrestling Uniforms	4521600116	1,505.00	
40 L 601 0000 00 0000 000 0000 0000			Associated Student Body Fund/Accounts Payable			-129.43	
40 E 530 2175 05 0000 000 0000 0000			Associated Student Body Fund/Expenditures/WRESTLING GIR			1,634.43	
184637	DORSETT, JENNIFER	12/30/2016	FOOD FOR MCIA		0	208.84	208.84
40 E 530 4655 05 0000 000 0000 0000			Associated Student Body Fund/Expenditures/MUSTANG CIA			208.84	
184638	EPCO INC / IN STITCHES	12/30/2016	16902	BBasketball spirit pack embroidering	4521600172	3,282.01	3,282.01
40 E 530 2110 05 0000 000 0000 0000			Associated Student Body Fund/Expenditures/BASKETBALL BO			3,282.01	
184639	FOOD DEPOT	12/30/2016	167855		4097	43.39	248.91
40 E 530 4190 04 0000 000 0000 0000			Associated Student Body Fund/Expenditures/SCHOOL STORE			43.39	
			167884		628	36.00	
40 E 530 1200 05 0000 000 0000 0000			Associated Student Body Fund/Expenditures/CONCESSIONS			36.00	
			167894	Food supplies for Dec. Meeting	4521600143	67.77	
40 E 530 4150 05 0000 000 0000 0000			Associated Student Body Fund/Expenditures/FFA			67.77	
			167911	Food supplies for Dec. Meeting	4521600143	101.75	
40 E 530 4150 05 0000 000 0000 0000			Associated Student Body Fund/Expenditures/FFA			101.75	
184640	FOOD SERVICES OF AMERICA	12/30/2016	8572424	student store	4521600053	473.96	473.96
40 E 530 4190 05 0000 000 0000 0000			Associated Student Body Fund/Expenditures/SCHOOL STORE			473.96	
184641	GILBERTSON, KALI J	12/30/2016	PROM SUPPLIES 2017		0	85.67	85.67
40 E 530 3018 05 0000 000 0000 0000			Associated Student Body Fund/Expenditures/CLASS OF 2018			85.67	

Check Nbr	Vendor Name	Check Date	Invoice Number	Invoice Desc	PO Number	Invoice Amount	Check Amount
184642	GREAT AMERICAN OPPORTUNITIES I	12/30/2016	913332084	Cookie Dough Fundraiser	4521600164	1,090.00	1,090.00
40 E 530 4650 05 0000 000 0000 0000				Associated Student Body Fund/Expenditures/PEP CLUB		1,090.00	
184643	GRIMES HORTICULTURE	12/30/2016	SORO63781	plant seeds for plant sale	4521600127	767.03	767.03
40 E 530 4150 05 0000 000 0000 0000				Associated Student Body Fund/Expenditures/FFA		832.99	
40 L 601 0000 00 0000 000 0000 0000				Associated Student Body Fund/Accounts Payable		-65.96	
184644	HOLIDAY INN EXPRESS PULLMAN	12/30/2016	28127 - 28136	Girls District Swim	4521600110	3,043.60	3,043.60
40 E 530 2040 05 0000 000 0000 0000				Associated Student Body Fund/Expenditures/ATHLETIC TRAV		3,043.60	
184645	HOUSEL MIDDLE SCHOOL IMPREST	12/30/2016	1723		0	4.00	436.52
40 E 530 1040 04 0000 000 0000 0000				Associated Student Body Fund/Expenditures/GENERAL		4.00	
			1724		0	372.52	
40 E 530 1040 04 0000 000 0000 0000				Associated Student Body Fund/Expenditures/GENERAL		372.52	
			1725		0	60.00	
40 E 530 6100 04 0000 000 0000 0000				Associated Student Body Fund/Expenditures/SAUL HAAS		60.00	
184646	IDENTI-TEES	12/30/2016	23	T-shirt and Hoodies for Choir	4521600112	822.10	822.10
40 E 530 4380 05 0000 000 0000 0000				Associated Student Body Fund/Expenditures/CHORUS		822.10	
184647	JEREMYS 1896 PUBLIC HOUSE	12/30/2016	12/10/2016		679	86.88	184.62
40 E 530 2260 05 0000 000 0000 0000				Associated Student Body Fund/Expenditures/SWIM TEAM GIR		86.88	
			12/10/2016*		678	97.74	
40 E 530 2260 05 0000 000 0000 0000				Associated Student Body Fund/Expenditures/SWIM TEAM GIR		97.74	
184648	KENNEWICK HIGH SCHOOL	12/30/2016	2016-20	Kennewick Wrestling Tournament Varsity Tournament & Girls Tournament	4521600150	450.00	450.00
40 E 530 2170 05 0000 000 0000 0000				Associated Student Body Fund/Expenditures/WRESTLING		450.00	
184649	KIMMEL ATHLETIC SUPPLY	12/30/2016	0549334-IN	Basketballs	4521600132	846.19	3,027.98
40 E 530 2210 05 0000 000 0000 0000				Associated Student Body Fund/Expenditures/BASKETBALL GI		846.19	
			0551307-IN	game / stat books	4521600136	140.08	
40 E 530 2010 05 0000 000 0000 0000				Associated Student Body Fund/Expenditures/CONTEST MGT		140.08	
			0551750-IN	Water Bottles & carrier	4521600156	220.19	
40 E 530 2140 05 0000 000 0000 0000				Associated Student Body Fund/Expenditures/FOOTBALL		220.19	

Check Nbr	Vendor Name	Check Date	Invoice Number	Invoice Desc	PO Number	Invoice Amount	Check Amount
			0551774-IN	Medical supplies for athletics	4521600133	1,614.12	
40 E 530 2020 05 0000 000 0000 0000				Associated Student Body Fund/Expenditures/MEDICAL SUPPL		1,614.12	
			0552128-IN	Wrestling book Mat Tape	4521600145	207.40	
40 E 530 2010 05 0000 000 0000 0000				Associated Student Body Fund/Expenditures/CONTEST MGT		207.40	
184650 LEMKE, DEBORAH A		12/30/2016	GINGERBREAD HOUSES		0	28.29	28.29
40 E 530 3110 01 0000 000 0000 0000				Associated Student Body Fund/Expenditures/FIRST		28.29	
184651 MCCULLOUGH, PATRICK A		12/30/2016	T-SHIRTS		0	207.20	207.20
40 E 530 4560 05 0000 000 0000 0000				Associated Student Body Fund/Expenditures/POLICE EXPLOR		207.20	
184652 MCMURTREY, JENNIFER L		12/30/2016	BEANIE		0	15.00	15.00
40 E 530 4650 05 0000 000 0000 0000				Associated Student Body Fund/Expenditures/PEP CLUB		15.00	
184653 NORTHWEST CHOICE FUNDRAISING		12/30/2016	12-5-2016	Butterbraids	4521600114	550.00	550.00
40 E 530 4160 05 0000 000 0000 0000				Associated Student Body Fund/Expenditures/FCCLA		550.00	
184654 OMNI CHEER		12/30/2016	PO58609901014	Cheer team back packs	4521600140	428.18	428.18
40 E 530 4470 05 0000 000 0000 0000				Associated Student Body Fund/Expenditures/CHEERLEADING		465.00	
40 L 601 0000 00 0000 000 0000 0000				Associated Student Body Fund/Accounts Payable		-36.82	
184655 PEPSI COLA YAKIMA		12/30/2016	010741395	winter concession drinks	4521600134	674.42	674.42
40 E 530 1200 05 0000 000 0000 0000				Associated Student Body Fund/Expenditures/CONCESSIONS		674.42	
184656 PROSSER HIGH SCHOOL IMPREST		12/30/2016	2848		0	180.00	8,949.99
40 E 530 1200 05 0000 000 0000 0000				Associated Student Body Fund/Expenditures/CONCESSIONS		180.00	
			2849		0	225.00	
40 E 530 2060 05 0000 000 0000 0000				Associated Student Body Fund/Expenditures/ATHLETIC ADMI		225.00	
			2850		0	6,002.24	
40 E 530 6001 05 0000 000 0000 0000				Associated Student Body Fund/Expenditures/ASB CHARITABL		6,002.24	
			2851		0	2,000.75	
40 E 530 6001 05 0000 000 0000 0000				Associated Student Body Fund/Expenditures/ASB CHARITABL		2,000.75	
			2853		0	90.00	
40 E 530 2040 05 0000 000 0000 0000				Associated Student Body Fund/Expenditures/ATHLETIC TRAV		90.00	
			2854		0	20.00	
40 E 530 6100 05 0000 000 0000 0000				Associated Student Body Fund/Expenditures/SAUL HAAS		20.00	
			2855		0	132.00	
40 E 530 2260 05 0000 000 0000 0000				Associated Student Body Fund/Expenditures/SWIM TEAM GIR		132.00	

Check Nbr	Vendor Name	Check Date	Invoice Number	Invoice Desc	PO Number	Invoice Amount	Check Amount
			2856		0	300.00	
40 E 530 6001 05 0000 000 0000 0000				Associated Student Body Fund/Expenditures/ASB CHARITABL		300.00	
184657	SHY'S PIZZA CONNECTION	12/30/2016	125		629	76.02	347.52
40 E 530 4350 05 0000 000 0000 0000				Associated Student Body Fund/Expenditures/LEADERSHIP		76.02	
			126		631	86.88	
40 E 530 4350 05 0000 000 0000 0000				Associated Student Body Fund/Expenditures/LEADERSHIP		86.88	
			127	pizza for concessions	4521600141	184.62	
40 E 530 4665 05 0000 000 0000 0000				Associated Student Body Fund/Expenditures/CHAMPS		184.62	
184658	SKEEN, ANGELA P	12/30/2016	PIZZA		0	120.70	120.70
40 E 530 4350 05 0000 000 0000 0000				Associated Student Body Fund/Expenditures/LEADERSHIP		120.70	
184659	SKILLS USA INC	12/30/2016	M222248	memberships	4521600129	588.00	588.00
40 E 530 4756 05 0000 000 0000 0000				Associated Student Body Fund/Expenditures/*Conversion G		588.00	
184660	STARR, KIMBERLY A	12/30/2016	PALL PLAY SUPPLIES		0	523.79	665.75
40 E 530 4999 05 0000 000 0000 0000				Associated Student Body Fund/Expenditures/DRAMA		523.79	
			PIZZA 11/22/2016		0	105.66	
40 E 530 4999 05 0000 000 0000 0000				Associated Student Body Fund/Expenditures/DRAMA		105.66	
			SHIPPING 11/18/2016		0	36.30	
40 E 530 4999 05 0000 000 0000 0000				Associated Student Body Fund/Expenditures/DRAMA		36.30	
184661	TCSOA	12/30/2016	93	Basketball Officials	2421600000	2,127.00	2,127.00
40 Q 819 1040 04 0000 000 0000 0000				Associated Student Body Fund/Restricted for Fund Purpos		2,127.00	
184662	UP FRONT FOOTWEAR INC	12/30/2016	162667	Marching shoes	4521600139	143.80	143.80
40 E 530 4360 05 0000 000 0000 0000				Associated Student Body Fund/Expenditures/BAND		156.17	
40 L 601 0000 00 0000 000 0000 0000				Associated Student Body Fund/Accounts Payable		-12.37	
184663	URM CASH & CARRY	12/30/2016	C31101838	Winter Concessions	4521600113	226.20	782.48
40 E 530 1200 05 0000 000 0000 0000				Associated Student Body Fund/Expenditures/CONCESSIONS		226.20	
			C31114422		4100	124.13	
40 E 530 4190 04 0000 000 0000 0000				Associated Student Body Fund/Expenditures/SCHOOL STORE		124.13	
			C31118132	Winter Concessions	4521600113	432.15	
40 E 530 1200 05 0000 000 0000 0000				Associated Student Body Fund/Expenditures/CONCESSIONS		432.15	
184664	US GAMES	12/30/2016	7584905A		4090	91.79	91.79
40 E 530 1040 04 0000 000 0000 0000				Associated Student Body Fund/Expenditures/GENERAL		91.79	

Check Nbr	Vendor Name	Check Date	Invoice Number	Invoice Desc	PO Number	Invoice Amount	Check Amount	
184665	VALLEY LANES	12/30/2016	113016	bowling, pizza, pop	4521600124	354.25	354.25	
40 E 530 4180 05 0000 000 0000 0000				Associated Student Body Fund/Expenditures/FBLA		354.25		
184666	VALLEY SEPTIC SERVICE LLC	12/30/2016	137230	porta potty for soccer field	4521600009	59.00	59.00	
40 E 530 2010 05 0000 000 0000 0000				Associated Student Body Fund/Expenditures/CONTEST MGT		59.00		
184667	WESTERN SCALE INC	12/30/2016	25329		4093	162.90	162.90	
40 E 530 1040 04 0000 000 0000 0000				Associated Student Body Fund/Expenditures/GENERAL		162.90		
184668	WHITSTRAN ELEM IMPREST FUND	12/30/2016	1151		0	39.00	39.00	
40 E 530 1060 01 0000 000 0000 0000				Associated Student Body Fund/Expenditures/BOOK CLUBS		39.00		
184669	WSSAAA TREASURER	12/30/2016	16-046	memberships	4521600128	135.00	135.00	
40 E 530 2004 05 0000 000 0000 0000				Associated Student Body Fund/Expenditures/ATHLETIC GENE		135.00		
						37 Computer	Check(s) For a Total of	35,656.66

## **BOARD PACKET**

**TO:** Board of Directors  
**SUBJECT:** Topp Productions DJ Services  
**AGENDA:** Action  
**DATE:** December 27, 2016  
**PREPARED BY:** Kevin Lusk, *Prosser High School Principal*

### **Background**

Prosser High will be having their annual Winter Ball on January 14, 2017 and will be contracting Topp Productions to provide DJ services. The cost of the service will be \$300.

### **Recommendation:**

It is recommended that the School Board of Directors approve the Topp Productions Service Agreement.



*A Higher Standard In DJ Services*

**Service Contract**

2168 N Vermont Loop  
Kennewick, WA. 99336  
Fax: 509-723-0956

John Canario: 509-551-2264  
[john@toppproductions.com](mailto:john@toppproductions.com)  
Chris Canario: 509-531-4037  
[chris@toppproductions.com](mailto:chris@toppproductions.com)  
AnnaLee Canario: 509-380-4081  
[annalee@toppproductions.com](mailto:annalee@toppproductions.com)

**Client Info**

Name: Prosser  
Address: 1203 Pro  
Prossa  
Phone: \_\_\_\_\_  
Email: Carol.rivera

Contract supplied  
by DJ for winterball

Date of service: 1/14/12

Start Time: 7pm

End Time: midnight

Location: at Prosser High School

Price for services on the event: \$300.00

Payment to be made as followed: in full no later than 1-14-2012



- Cloud Fog Effect
  - Live PA and Lighting (Bands, Open Mic Night)
  - Other \_\_\_\_\_
  - Travel to Prosser High School
- } included in cost on

Balance to be paid in full before, or no later than one week before date of service. If full payment has not been made by day of service, Topp Productions reserves the right to postpone setup until payment is made.

By signing this contract, you are bound to all agreements said in contract.

- Down payment is nonrefundable, and required to secure date of service.
- Client must make all requests including songs, announcements, additional microphones, etc. no later than 2 weeks before event.
- Client will provide power and safe environment to operate within.
- Price quoted is subject to change if additional services are requested after contract is signed. (Karaoke, Uplighting, Cloud Effect, etc.)
- This contract binds Topp Productions to provide services on date specified if full payment is made. To perform services on said date, at said time, and said location. Music is to be played as prearranged by Topp Productions and Client. Topp Productions will provide sound, and/or lighting.
- If full payment has been made, but services were not provided, then Client is entitled to full refund.

Client Paul Quinn Date 12-9-16

Topp Productions Representative [Signature] Date 12-6-2016

the terms and conditions of the policy, certain policies may require a separate certificate holder in lieu of such endorsement(s).

<b>PRODUCER</b> Hiscox Inc. 520 Madison Avenue 32nd Floor New York, NY 10022  <b>INSURED</b> TOPP PRODUCTIONS 2168 N VERMONT LOOP  KENNEWICK WA 99336	<b>CONTACT</b> NAME: PHONE (AC, No, Ext): (888) 202-3007 FAX (AC, No): E-MAIL: contact@hiscox.com ADDRESS: INSURER(S) AFFORDING COVERAGE INSURER A: Hiscox Insurance Company Inc NAIC # 10200 INSURER B: INSURER C: INSURER D: INSURER E: INSURER F:
---	---

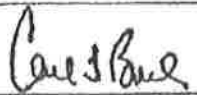
**COVERAGES**      **CERTIFICATE NUMBER:**      **REVISION NUMBER:**

THIS IS TO CERTIFY THAT THE POLICIES OF INSURANCE LISTED BELOW HAVE BEEN ISSUED TO THE INSURED NAMED ABOVE FOR THE POLICY PERIOD INDICATED. NOTWITHSTANDING ANY REQUIREMENT, TERM OR CONDITION OF ANY CONTRACT OR OTHER DOCUMENT WITH RESPECT TO WHICH THIS CERTIFICATE MAY BE ISSUED OR MAY PERTAIN, THE INSURANCE AFFORDED BY THE POLICIES DESCRIBED HEREIN IS SUBJECT TO ALL THE TERMS, EXCLUSIONS AND CONDITIONS OF SUCH POLICIES. LIMITS SHOWN MAY HAVE BEEN REDUCED BY PAID CLAIMS.

INSR LTR	TYPE OF INSURANCE	ADDL SUBR INSD / WVD	POLICY NUMBER	POLICY EFF (MM/DD/YYYY)	POLICY EXP (MM/DD/YYYY)	LIMITS
A	<input checked="" type="checkbox"/> COMMERCIAL GENERAL LIABILITY <input type="checkbox"/> CLAIMS-MADE <input checked="" type="checkbox"/> OCCUR  GEN'L AGGREGATE LIMIT APPLIES PER: <input checked="" type="checkbox"/> POLICY <input type="checkbox"/> PROJ.JECT <input type="checkbox"/> LOC <input type="checkbox"/> OTHER		UDC-1585299-GGL-16	05/22/2016	05/22/2017	EACH OCCURRENCE \$ 2,000,000 DAMAGE TO RENTED PREMISES (EA OCCUR/PEROC) \$ 100,000 MED EXP (Any one person) \$ 5,000 PERSONAL & ADV INJURY \$ 2,000,000 GENERAL AGGREGATE \$ 2,000,000 PRODUCTS - COMP/PROP AGG \$ S/T Gen. Agg. \$
	AUTOMOBILE LIABILITY  <input type="checkbox"/> ANY AUTO <input type="checkbox"/> ALL OWNED AUTOS <input type="checkbox"/> HIRED AUTOS <input type="checkbox"/> SCHEDULED AUTOS <input type="checkbox"/> NON-OWNED AUTOS					COMBINED SINGLE LIMIT (EA ACCIDENT) \$ BODILY INJURY (Per person) \$ BODILY INJURY (Per accident) \$ PROPERTY DAMAGE (Per accident) \$ \$
	<input type="checkbox"/> UMBRELLA LIAB <input type="checkbox"/> EXCESS LIAB <input type="checkbox"/> DED <input type="checkbox"/> RETENTION \$	<input type="checkbox"/> OCCUR <input type="checkbox"/> CLAIMS-MADE				EACH OCCURRENCE \$ AGGREGATE \$ \$
	WORKERS COMPENSATION AND EMPLOYERS' LIABILITY ANY PROPRIETOR/PARTNER/EXECUTIVE OFFICER/MEMBER EXCLUDED? (Mandatory in NH) If yes, describe under DESCRIPTION OF OPERATIONS below	<input type="checkbox"/> Y <input type="checkbox"/> N <input type="checkbox"/> N/A				<input type="checkbox"/> PER STATUTE <input type="checkbox"/> OTH-ER E L EACH ACCIDENT \$ E L DISEASE - EA EMPLOYEE \$ E L DISEASE - POLICY LIMIT \$

DESCRIPTION OF OPERATIONS / LOCATIONS / VEHICLES (ACORD 101, Additional Remarks Schedule, may be attached if more space is required)

**CERTIFICATE HOLDER**      **CANCELLATION**

	SHOULD ANY OF THE ABOVE DESCRIBED POLICIES BE CANCELLED BEFORE THE EXPIRATION DATE THEREOF, NOTICE WILL BE DELIVERED IN ACCORDANCE WITH THE POLICY PROVISIONS.
	AUTHORIZED REPRESENTATIVE 

© 1988-2014 ACORD CORPORATION. All rights reserved.

## **BOARD PACKET**

**TO:** Board of Directors  
**SUBJECT:** Prosser PTA Donation to Prosser Heights Elementary  
**AGENDA:** Action  
**DATE:** December 27, 2016  
**PREPARED BY:** Sally Juzeler, Prosser Heights Elementary Principal

### **Background**

Prosser PTA has awarded Prosser Heights Elementary a mini grant in the amount of \$704.09. These funds will be used to purchase materials for the 5<sup>th</sup> grade rockets project.

### **Recommendation:**

It is recommended that the School Board of Directors approve the Award of the Prosser PTA Mini Grant.

## BOARD PACKET

**TO:** Board of Directors  
**SUBJECT:** ESD 105 Behavior School Implementation Agreement  
**AGENDA:** Action  
**DATE:** December 27, 2016  
**PREPARED BY:** Dr. Ray Tolcacher, *Superintendent*

### **Background**

On August 8, 2016 the Prosser School District hosted a lunch meeting with newly-appointed superintendents of ESD 105 and ESD 123 as well as selected lower valley school district superintendents. At that meeting, there was discussion about the need for a joint partnership between school districts and ESD's to help plan and implement classes to serve area school districts with much-needed programs, trainings and instruction for students who have high level behavioral disorders. It is a significant concern for our teachers and administrators as there are limited, specialized classrooms and interventions for students who have high levels of daily discipline issues and pose a safety issue for regular classroom instruction.

Currently, our District, like the other districts in our area, send students who have been identified with behavior disorders, to the Lourdes Hospital program in Pasco. Our District, in partnership with Grandview, send students on Prosser buses to Lourdes daily for their programs. In past years, as well as currently, space for students with these educational challenges was very limited as Lourdes was used by most school districts in the area. Currently there are no other services or available staff to accommodate the increasing need for these kinds of services. The planning agreement will ensure that once in place, priority for student enrollment in these classes will go to the districts that are a part of the planning grant. The planning year is essential as no other programs or planning is underway to assist districts in our area. The Board has been informed at prior meetings of our District's involvement and leadership in getting this much-needed partnership and implementation in place.

### **Recommendation:**

It is recommended the Board of Directors approve the Behavior School Implementation Agreement with ESD 105 for the 2016-2017 planning year.

## BEHAVIOR SCHOOL IMPLEMENTATION AGREEMENT

THIS AGREEMENT is made and entered into between EDUCATIONAL SERVICE DISTRICT 105, hereinafter referred to as "ESD 105", and PROSSER SCHOOL DISTRICT NO. 116 hereinafter referred to as "District."

WHEREAS, ESD 105, under RCW 28A.310.200 provides services to school districts;

WHEREAS, the District and ESD 105 under RCW 28A.320.080, RCW 28A.310.200, and RCW 39.34.080 are empowered to enter into agreements for interlocal agreements and cooperative service programs;

WHEREAS, the District desires to enter into a cooperative service agreement with ESD 105;

IT IS HEREBY AGREED that the cooperative shall receive funds from the District and shall expend such funds to determine the feasibility of a Behavior Program and make recommendations to member districts for implementation of a behavior school(s). The cooperative will provide services to the participating districts ("Cooperative" hereinafter) in accordance with the terms and conditions set forth herein:

### 1. TERM OF AGREEMENT

This agreement shall be effective September 1, 2016 to August 31, 2017.

This agreement shall not automatically re-new. The District shall have the right to consider the recommendation(s) of the Advisory Council before obligating the District to further participation in the Cooperative. A new cooperative agreement shall replace this agreement.

### 2. MEMBERSHIP

The District shall become a full member of the Behavior School Cooperative effective with the signing of this agreement. The District shall enjoy equal rights in the cooperative for future student admission to a Behavior School upon the recommendation of the Advisory Council to form a Behavior School.

### 3. REPRESENTATION

Each District shall be a member of the Advisory Council. The Advisory Council will consist of the superintendent (or designee) of each of the member districts. The function of this Advisory Council is to make a final recommendation and/or course of action for the formation of a Behavior Program. The District's superintendent (or designee) shall have the option to appoint a representative the Executive Committee.



The cooperative will form an Executive Committee to provide guidance on the implementation and feasibility of a Behavior Program. The Executive Committee will make a final recommendation to the Advisory Council.

#### **4. ESD 105 RESPONSIBILITIES**

ESD 105 agrees to:

- A. Bring all issues that need a final decision to the Advisory Council.
- B. Advertise, screen and hire a Principal to plan the Behavior Program.
- C. Locate a suitable facility/location for the Behavior School(s).
- D. Select research based behavior programs and curricula materials to be used.
- E. Select students appropriate for the program.
- F. Select and train staff in all behavior methods and strategies to be implemented.
- G. Develop a program calendar, operating procedures, and student and parent materials.
- H. Develop a per student program cost for the 17-18 school year.

#### **5. DISTRICT RESPONSIBILITIES**

The District agrees to:

- A. To participate in fees and charges as listed in Exhibit A.
- B. Appoint a contact person responsible for the coordination with ESD 105.

#### **6. ASSETS**

All assets acquired by the ESD105 from any monetary source or assets donated and placed in service for the implementation of this program shall be and remain the property of the cooperative. In the event of dissolution of this cooperative program by the Advisory Council, all assets shall be returned to the donor and all remaining funds, after all liabilities have been satisfied, shall be returned to the participating Districts on a pro-rata basis.

#### **7. DISPUTES**

Any dispute, claim or grievance arising out of or relating to the interpretation or application of this agreement shall be resolved between the Superintendent of the member District and the ESD 105 Superintendent. If this process fails to settle the situation, the dispute, claim or grievance shall be submitted to the ESD 105 Board of Directors for final determination.

## **8. TERMINATION**

If either party fails to comply with the terms and conditions of this agreement, the other party, upon thirty (30) days prior written notice to the breaching party may terminate this agreement.

## **9. SUSPENSION AND DEBARMENT**

ESD 105 and the District certify that persons responsible for this agreement are not presently debarred, suspended, proposed for debarment, declared ineligible, or voluntarily excluded from participation in this program by any federal department or agency.

## **10. INTERLOCAL AGREEMENT**

This agreement shall be in addition to the authority vested in the parties pursuant to RCW 28A.310.180 and RCW 28A.225.250, be deemed to be in satisfaction of the provisions of RCW 30.34, and that this agreement shall be deemed a pact pursuant to RCW 39.34.080.

## **11. ASSIGNMENT**

This agreement may not be assigned by either party without written consent of both parties.

## **12. NONDISCRIMINATION**

No person shall, on the grounds of race, creed, color, national origin, sex, sexual orientation, marital status, military status or disability be excluded from participation in, be denied the benefits of, or be otherwise subjected to discrimination under activities performed pursuant to this Contract.

## **13. WAIVER AND SEVERABILITY**

No provision of this agreement, or the right to receive reasonable performance of any act called for by its terms, shall be deemed waived by a breach thereof as to a particular transaction or occurrence.

If any term or condition of this agreement or application thereof to any person or circumstance is held invalid, such invalidity shall not affect other terms, conditions or applications, of the agreement which can be given effect without the invalid term, condition of application; to this end the terms and conditions of this agreement are declared severable.

The parties acknowledge that they have read and understood this agreement, including any supplements or attachments hereto, and do agree thereto in every particular. The parties further agree that this agreement, together with all appendices, constitutes the entire agreement between the parties and supersedes all communications, written or oral, heretofore related to the subject matter of this agreement. The agreement may be modified or amended with the mutual consent of the parties.

**EDUCATIONAL SERVICE  
DISTRICT 105**

**PROSSER SCHOOL DISTRICT NO. 116**

BY *Karin Chase*

BY \_\_\_\_\_

TITLE Superintendent

TITLE \_\_\_\_\_

DATE 11-28-16

DATE \_\_\_\_\_



**ESD105 Cooperative Agreement Appendix A**

For the Prosser School District No. 116

Name of Service	Cost
Behavior Program Implementation	\$10,400

Billing will be done in a single installment upon execution of this agreement.