



## SPECIAL BOARD MEETING

Prosser High School Library  
1203 Prosser Avenue  
Prosser, WA 99350

Thursday, November 21, 2019 06:00 PM

### **I. 6:00 p.m. - Call to Order**

1. Pledge of Allegiance
2. Approval of Agenda
3. Communications

### **II. Safety and Security**

1. Whitstran Threat Assessment Exercise
2. Radio Communications - Mel Kimmel, Motorola
3. Next Steps

### **III. Information Items:**

#### **1. Department Reports**

[Transportation \(p. 3\)](#)

[Maintenance \(p. 4\)](#)

[Technology \(p. 5\)](#)

[Food Service \(p. 6\)](#)

[Special Services \(p. 7\)](#)

[HMS/PHS Drug Testing and Education Program \(p. 8\)](#)

### **IV. Protocol for Addressing the Board:**

[Welcome to the Board Meeting \(p. 9\)](#)

### **V. Hearing of Visitors:**

### **VI. Reports:**

1. Assistant Superintendent's Report - Curriculum and Instruction
2. Assistant Superintendent's Report - Business and Operations

[November 2019 Student Enrollment \(p. 10\)](#)

[Year End Financial Reports 2018/2019 \(p. 13\)](#)

3. Superintendent's Report
4. Board Members' Reports
5. Student Representatives' Reports

## VII. Consent Items:

### 1. Certificated Personnel

Cert - November 21, 2019 (p. 30)

### 2. Classified Personnel

Class - November 21, 2019 (p. 31)

### 3. Approval of Minutes

Regular Board Meeting - November 13, 2019 (p. 32)

### 4. Contracts and Personal Service Agreements

### 5. Vouchers and Payroll

Payable November 27, 2019 (p. 39)

### 6. Donation

Prosser AAU (p. 74)

## VIII. Old Business:

## IX. Action Items:

### 1. Amend Policy No. 3210: Nondiscrimination - SECOND READING

Policy No. 3210 (p. 75)

### 2. Amend Policy No. 5010: Nondiscrimination and Affirmative Action - SECOND READING

Policy No. 5010 (p. 80)

### 3. Amend Policy No. 5011: Sexual Harassment of District Staff Prohibited - SECOND READING

Policy No. 5011 (p. 87)

## X. Discussion Items:

### 1. Elementary Design Update

## XI. Future Meetings:

- *Special Board Meeting, Value Engineering Meeting for Elementary Schools, PHS Library, December 5, 2019, 6:30 p.m.*
- *Regular Board Meeting, PHS Library, December 11, 2019, 6:00 p.m.*

## XII. Adjournment

## XIII. Executive Session - "To receive and evaluate complaints or charges brought against a public officer or employee" - RCW 42.30.110 (1) (f)

## XIV. Exempt Session - Negotiations Update

# Prosser School District TRANSPORTATION DEPARTMENT

Amiee Cook, Supervisor  
Telephone: 786-2630; Fax: 786-3647



## TRANSPORTATION UPDATE 11/21/2019

Route Drivers	26		
Substitute Drivers	3		
Monitors	3		
Substitute Monitors	1	Staffing:	96%
Staff	3		
Drivers in Training	3		
Route Buses	27	Operational Buses:	92%
Spare Buses	3		
Trip Buses	4		
Down Buses	2		
Total Buses	37		
Filled Routes	26	Filled Routes:	96%
Open Routes	1		
Total Routes	27		
Accidents	0	Accidents to Date	1
Ridership	2289	(reported to OSPI)	44 average riders per bus each run
Trips	With current staffing, we are maxed out at 3 trips per day that overlap route times		
*Sub Drivers:	One available Wed only; One available Fri only		
*Training:	Two will take a route and the other one will be added to the sub list.		
	Training requirements:	Fees:	\$35 CDL Tests
	30-40 hrs of classroom		CDL
			\$40 Permit Drive
	25 plus hrs of behind the wheel		\$110 Test
	(2 are behind the wheel training; 1 is still in classroom)		
*Down Buses:	12 - Route Bus - Engine Oil leak - currently in shop for repairs \$250 for parts		
*Accident Repairs	14 - Right Rear Storage bay damaged - \$6000 estimate for repair - bus still drivable. Insurance claim pending.		
*Resignations	1 driver - 21 yrs - due to medical effective 12/1/2019		

November 21, 2019

## **Maintenance Projects Prepared by Dave Schell**

- Keene-Riverview: Issued keys to all paraprofessionals for security reasons
- Installed new outside lighting at Transportation
- Moved the last of the early childhood education preschool to the high School, including moving the storage shed
- Repaired electrical service to portable 11 at Whitstran
- Repaired HVAC at vocational-ag building at high school
- Housel Middle School – wind damage to dugout, debris removed and new structure should be completed by the end of the week
- Repaired HVAC unit in the computer lab at high school
- Preparing for snow, including ice melt purchase, gators and snow plows
- Repaired greenhouse HVAC at high school
- Repaired curriculum office HVAC
- Working on Housel Middle School south gym lighting
- Ongoing maintenance projects

## **Technology Department Report**

### **November 2019**

---

#### **Technology:**

In addition to day to day running of the tech department:

##### Projects

- Created, packaged and deployed the New Adobe Suite to Vocational Department
- Secretary machines ordered. Setting up to deploy over Christmas break
- Configuring Switches to replace outdated ones
- Assisted with open Staff Lab
- Participated in Community event for Downtown Trick-or-Treat 10/31/19

#### **Data:**

In addition to the day to day running of the student data reporting:

##### Projects

- P210 Vocational application closed on 11/1/19
- P210 reopened and allowed for some adjustments in data. Completed and certified.
- Attended Training on Program 40 for Youth Re-Engagement reporting
- Put practices in place for Program 40 enrollment

**Prosser School District  
Food Service Report  
November 21, 2019**

Applications Received				Paid - No Appl. Made	* Direct Certification			Totals							
School	Free	Reduced	Paid Denied		Total	Free	Reduced	Total	Free	%	Reduced	%	Paid	%	Students
Whitstran	37	26	8	71	54	136	4	140	173	65.28%	30	11.32%	62	23.40%	265
KRV	87	41	5	133	134	203	4	207	290	61.18%	45	9.49%	139	29.32%	474
Heights	67	43	5	115	133	212	10	222	279	59.36%	53	11.28%	138	29.36%	470
HMS	88	46	14	148	175	315	14	329	403	61.81%	60	9.20%	189	28.99%	652
PHS	87	59	17	163	346	338	22	360	425	48.91%	81	9.32%	363	41.77%	869
<b>Totals</b>	<b>366</b>	<b>215</b>	<b>49</b>	<b>630</b>	<b>842</b>	<b>1204</b>	<b>54</b>	<b>1258</b>	<b>1570</b>	<b>57.51%</b>	<b>269</b>	<b>9.85%</b>	<b>891</b>	<b>32.64%</b>	<b>2730</b>

\* Direct Certification is the process school districts use to certify categorically eligible students for free or reduced meals without filling out an application



## Special Service Update-11/21/19

Department work	<ul style="list-style-type: none"> <li>• Dr. Benjamin Winters gave his presentation ‘Vision and the Learning Link’ on November 7<sup>th</sup> at 3:00-6:00.</li> <li>• Prosser School District has two schools that have been selected as part of OSPI’s ‘Inclusionary Practices Professional Development Project’ The building administrators are selecting their building teams</li> <li>• Tuesday November 4<sup>th</sup> I worked with the sped department at Heights for the day on defining Lifeskills, staffing, process for placing students, and transitioning between buildings.</li> <li>• Wednesday November 20<sup>th</sup> I worked with the sped department at PHS for the day on defining Lifeskills, staffing, process for placing students, and transition.</li> <li>•</li> </ul>
Round Table Process	<ul style="list-style-type: none"> <li>• Nothing to report at this time</li> </ul>
Bi-monthly building meetings	<p>Topics covered this past month include: start up, caseloads, behavioral issues, and trainings that have occurred.</p>
IEP Compliance	<ul style="list-style-type: none"> <li>• We continue with our in-house compliance monitoring</li> </ul>
Prosser High School Transition Program	<ul style="list-style-type: none"> <li>• Nothing to report at this time</li> </ul>
Budget/Human Resources	<ul style="list-style-type: none"> <li>• We are still short individuals that will work as substitute paras...we are actively recruiting.</li> </ul>
Program	<ul style="list-style-type: none"> <li>• <b>November 2019 total student count was 367 total. 0-3: 14, 3-5 preschool: 14, K-21: 339. We are at 13.34% (2,527.43) State cap is currently 13.5%</b></li> <li>• <b>November 2019 had 1 exception: case-manager change. November 2018 had 0 exceptions.</b></li> </ul>

# HMS/PHS Drug Testing and Education Program Update

## November 2019

	HMS	PHS Athletics	PHS Activities
<b>Participants</b>	151	142	105
<b>Opt In</b>	92 (61%)	107 (75%)	88 (84%)
<b>Grade Level</b>	<b>Grade 6: 0</b>	<b>Grade 9: 41</b>	<b>Grade 9: 22</b>
	<b>Grade 7: 57</b>	<b>Grade 10: 39</b>	<b>Grade 10: 18</b>
	<b>Grade 8: 35</b>	<b>Grade 11: 30</b>	<b>Grade 11: 18</b>
		<b>Grade 12: 32</b>	<b>Grade 12: 30</b>

### HMS Update:

- Education Meeting held for Winter I Sports on November 6, 2019. Training provided by Chris Cisneros (Prosser Boys & Girls Club) in conjunction with Thrive Coalition.
- 90% participation. (18 attended, 1 excused absence, 1 unexcused absence,)
- Make-Up Meeting for Winter I Sports and for HMS Activities (FCCLA\* and TSA\*) scheduled for November 20, 2019. Intend to train 2 participants who missed training and 5 participants in FCCLA/TSA who have not already been trained for athletics.

\*FCCLA – Family, Career and Community Leaders of America

\*TSA – Technology Students’ Association

### PHS Update:

- Education Meeting held for Winter Sports and Club participants on November 13, 2019.
- Training was video recorded for future use in Education Meetings for individuals or small groups.

**Next Random Drug Assessment tentatively scheduled for December 6, 2019.**



# SCHOOL BOARD MEETINGS

Prosser School District No. 116, 1500 Grant Avenue, Prosser, WA 99350

## Welcome to a meeting of Prosser School District Board of Directors!

Your views and interest in education are important to us and to your schools. Whether your visit is for the purpose of bringing information to the Board's attention, solving a problem, or simply to see what's going on, we hope you'll feel welcome and comfortable at this meeting. We also hope that you will leave with a better understanding of your school district and its Board of Directors.

### How the Board Operates

As the Board meeting progresses, you may notice that there is quick action on some items. This is because the Board generally considers an issue for several meetings before taking action, and also because background materials on the various items are sent to members for their careful study prior to the meeting. Sometimes the Board will approve a motion that encompasses many items. These items, grouped under the "consent" portion of the agenda, are considered routine.

Board members are: Scotty Hunt, President; Jesalyn Cole, Vice-President; Andy Howe, Peggy S. Douglas and Scott Coleman. Student representatives are: Rebekah Bestebreuer, Cacia Roy, Martha Akinbade and Zane Castilleja.

### About Board Meetings

Business meetings are held twice each month, on the 2nd and 4th Wednesday. The first meeting of the month is also a time for the various educational programs of the District to provide an educational presentation to the Board. These meetings begin at 6:00 p.m.

The Board encourages input on all issues under discussion at the business meetings.

### About Executive Sessions

The Board may occasionally go into executive session, thus excluding the public and the news media from witnessing the discussion. You should know though, that the Board will only discuss issues in executive session. It must, by law, take all actions in an

open meeting. The law also limits what the Board can legally discuss in executive session. These closed discussions may only concern litigation, personnel selection or evaluation, negotiations, complaints against an officer or staff member or real estate transactions where public disclosure would be damaging to individuals or the general welfare of the District. Before going into executive session, the Board president must estimate the time the Board will return to open session.

### Study Sessions

Board Study Sessions are held by the Board to address specific issues and to give the Board an opportunity to have staff make presentations regarding specific areas of instruction or operation. Study sessions are open meetings and offer the community an opportunity to hear the issues being discussed. Study sessions follow the same protocols as regular Board meetings for addressing the Board with questions or concerns.

### Addressing the Board

You may present a concern to the Board during the time reserved for hearing public comment. If this is the case we ask that you:

- Prior to the start of the meeting, sign in, noting the topic you intend to address to the Board.
- Come to the microphone and state your name.
- Do not reflect adversely on the political or economic view, ethnic background, character or motives of any individual.
- Do keep your comments concise, non-emotional and brief.

The Board is interested in hearing your concerns and your compliments too. It's best to call the Superintendent's office a couple of days before the meeting. If this isn't possible, you can ask the Board president to recognize you during the hearing section.

### Board Hearings

The school Board can be compared to a "court of last resort." If a concern cannot be solved by first talking with

the teacher, principal, or appropriate District personnel, it may be forwarded to the Board for hearing. Sometimes this hearing may be conducted in "executive session," meaning the public and the media are not in attendance.

### About Your Board

Public schools are especially close to the communities they serve because they are governed by men and women selected from the community. These men and women - your school Board; are volunteers who spend a great deal of time on the many details involved in providing quality education.

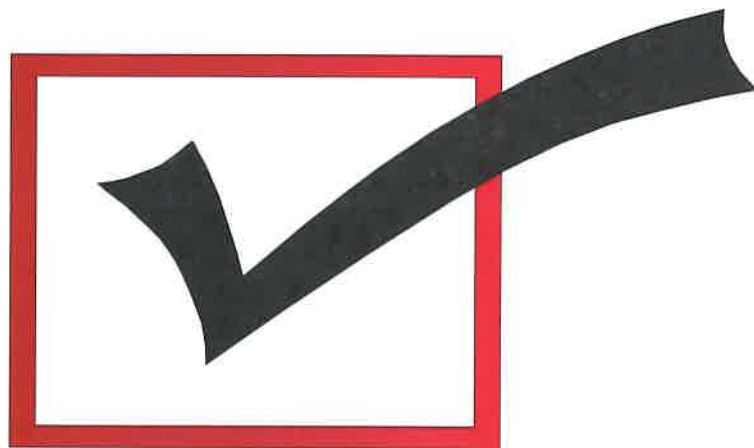
Board members serve four-year terms. They are required to file financial disclosure statements with the Washington State Public Disclosure Commission and must be registered voters of the school district.

School Board members attend meetings, keep communications open with other members of the community and represent the needs of the District before local, state and national representatives. They make critical decisions that have a direct impact on what children learn and how they learn it. However, a school Board is a legal body and can only make decisions as a body.

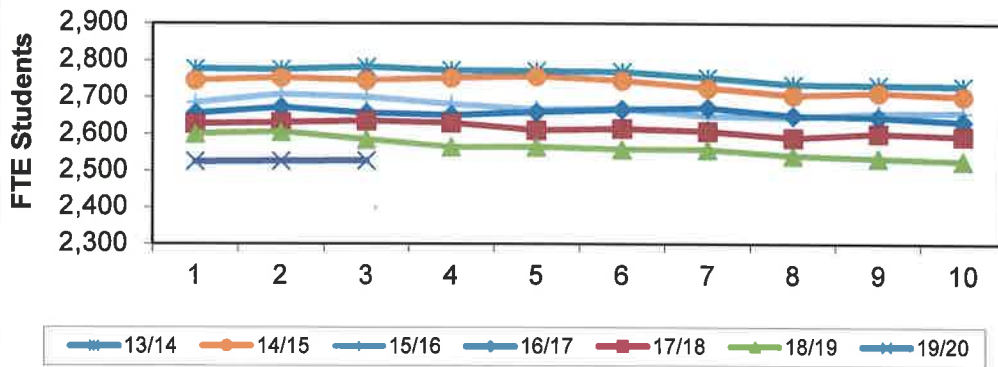
You may notice that many of the decisions the Board must make are not directly related to instruction. School Board members are also responsible for keeping the buildings and grounds in good shape, balancing the budget, protecting the District's legal interests, and providing for long-range planning.



# Student Enrollment for November 2019

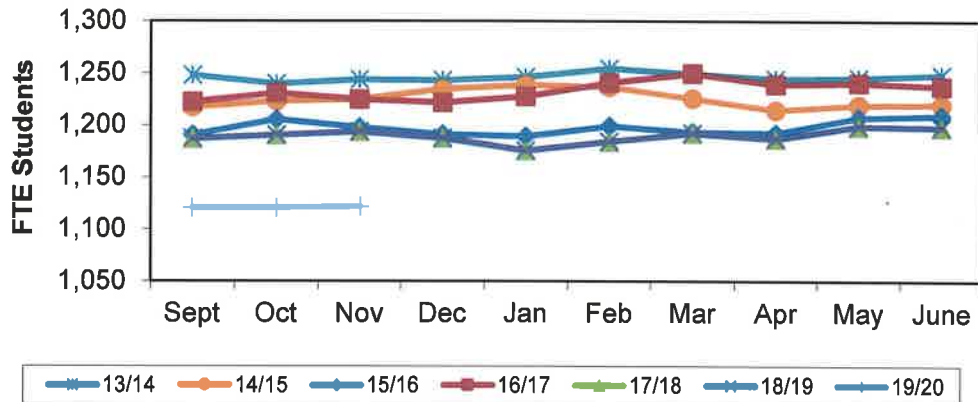


### District Monthly Enrollment from 13/14 to 19/20



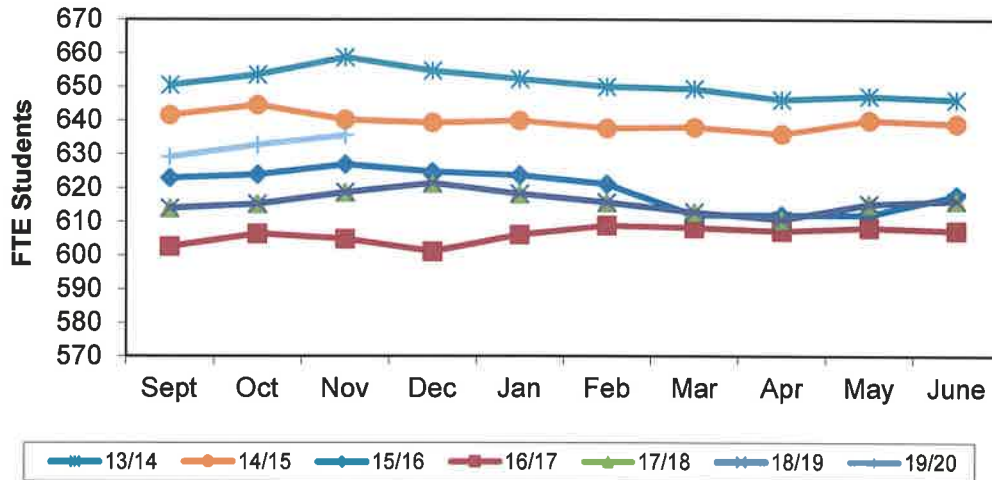
	Sept	Oct	Nov	Dec	Jan	Feb	Mar	Apr	May	June	Average
13/14	2,777	2,774	2,782	2,772	2,771	2,769	2,753	2,735	2,733	2,731	2,760
14/15	2,745	2,752	2,745	2,752	2,756	2,745	2,725	2,705	2,713	2,703	2,734
15/16	2,685	2,708	2,700	2,681	2,667	2,669	2,647	2,646	2,657	2,658	2,672
16/17	2,656	2,672	2,657	2,651	2,660	2,667	2,671	2,650	2,646	2,634	2,656
17/18	2,627	2,631	2,635	2,630	2,609	2,614	2,607	2,590	2,602	2,594	2,614
18/19	2,601	2,606	2,585	2,565	2,565	2,559	2,558	2,542	2,534	2,528	2,564
19/20	2,525	2,527	2,527								2,526
19/20 Budget											2,497
(Under) Over											29

### Elementary Enrollment from 13/14 to 19/20



	Sept	Oct	Nov	Dec	Jan	Feb	Mar	Apr	May	June	Average
13/14	1,248	1,240	1,244	1,243	1,246	1,254	1,249	1,244	1,245	1,248	1,246
14/15	1,217	1,223	1,224	1,234	1,238	1,236	1,225	1,214	1,219	1,219	1,225
15/16	1,191	1,206	1,198	1,191	1,189	1,199	1,193	1,192	1,207	1,209	1,197
16/17	1,222	1,230	1,224	1,221	1,227	1,240	1,249	1,239	1,240	1,237	1,233
17/18	1,187	1,190	1,193	1,187	1,175	1,184	1,192	1,187	1,199	1,198	1,189
18/19	1,149	1,152	1,140	1,135	1,133	1,138	1,139	1,133	1,131	1,132	1,138
19/20	1,121	1,121	1,122								1,121
19/20 Budget											1,087
(Under) Over											34

### HMS Enrollment from 13/14 to 19/20

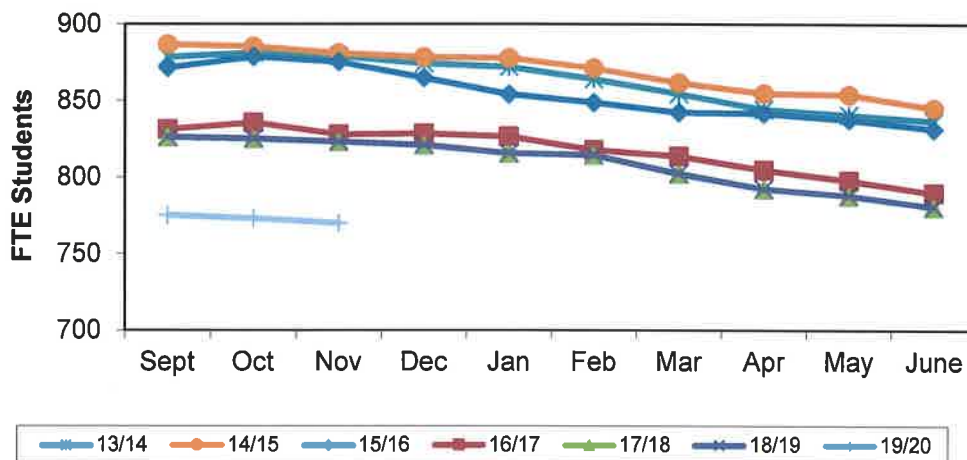


	Sept	Oct	Nov	Dec	Jan	Feb	Mar	Apr	May	June	Average
13/14	651	654	659	655	652	650	649	646	647	646	651
14/15	642	645	640	639	640	638	638	636	640	639	640
15/16	623	624	627	625	624	621	612	612	612	618	620
16/17	603	606	605	601	606	609	608	607	608	607	606
17/18	614	615	619	621	618	616	613	611	615	616	616
18/19	626	628	622	623	628	622	621	622	621	616	623
19/20	629	633	636								633

19/20 Budget  
(Under) Over

4

### PHS Enrollment from 13/14 to 19/20 (includes Falls Alternative HS through 16/17)

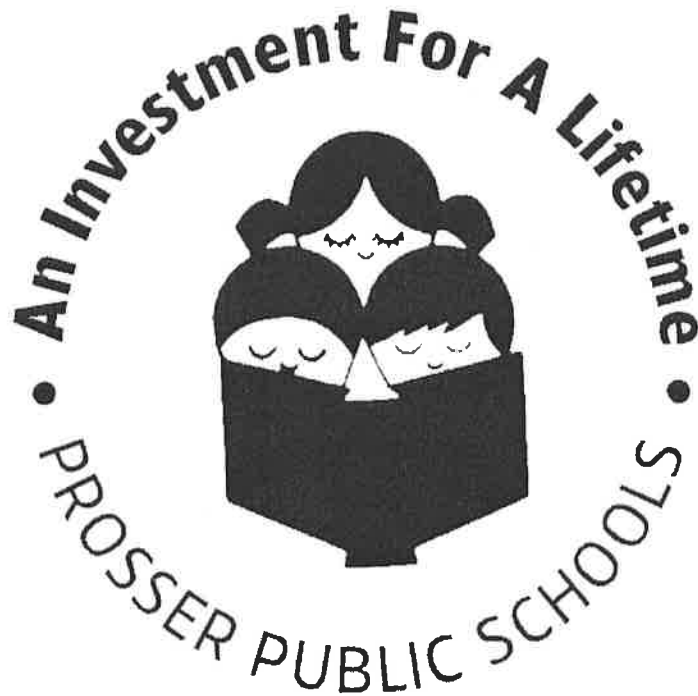


	Sept	Oct	Nov	Dec	Jan	Feb	Mar	Apr	May	June	Average
13/14	878	881	879	874	872	864	855	844	841	836	862
14/15	887	885	881	878	878	871	861	855	854	845	869
15/16	871	879	875	865	854	849	842	842	837	831	855
16/17	831	835	828	828	826	818	813	804	798	790	817
17/18	826	825	823	821	815	814	802	792	788	780	809
18/19	826	827	823	807	805	799	798	786	782	779	803
19/20	775	773	770								773

19/20 Budget  
(Under) Over

(8)

**2018/2019**  
**Annual Year End**  
**Financial Reports**



**To: Board of Directors**  
**From: Craig Reynolds, Assistant Superintendent**  
**Date: November 21, 2019**

**2018-19 Annual Year End Financial Report**

---

The following report is a summary of the financial results of the Prosser School District for the 2018-19 school year.

**General Fund (#10)**

The following reports are attached:

- >Detail of budgeted versus actual revenues and expenditures by program. The budget showed expenditures exceeding revenues by \$970,278. The actual results were expenditures exceeding revenues by \$152,727.
- >Budget Status
- >Monthly Revenues and Expenditures
- >Graph Comparing 2018-19 to 2017-18 Monthly Fund Balance, Revenue, and Expenditures
- >Actual Revenues, Expenditures and Fund Balance from 2012-13 through 2018-19

**Fund Balance**

From an accounting perspective, fund balance is the difference between assets and liabilities, and will increase or decrease during the year depending on revenues and expenditures. Total fund balance is classified into various categories, such as Nonspendable (inventory and prepaid items), Restricted (can only be spent for specific purposes such as carryforwards in state programs), and Unassigned (the residual). The fund balance as of 8/31/19 is comprised of the following:

(A) Beginning Total Fund Balance (9/1/18)	\$3,908,629
(B) Excess of Expenditures over Revenues	(152,727)
Nonspendable and Restrictions:	
Food Service Inventory	\$ 31,791
Prepaid Items	100,011
Traffic Safety Program Carry Forward	4,089
Learning Assistance Program (LAP) Carry Forward	1,748
LAP High Poverty Carry Forward	67,893
Career and Technical Ed Carry Forward	92,652
Transportation Carry Forward	<u>195,490</u>
(C) Total Fund Balance Restrictions	\$493,674
(A)-(B)-(C) Ending Unassigned Fund Balance	\$3,262,228
(A)-(B) Total Ending Fund Balance (8/31/19)	\$3,755,902

**Prosser School District  
General Fund Budget vs. Actual  
School Year End 2018 - 19**

Program #	Program Description	Revenue A/C #	Revenue Description	REVENUE			EXPENDITURES			NET TOTALS (Expenditures) over Revenue		
				Budgeted	Actual	Difference	Budgeted	Actual	Difference	Budgeted	Actual	Difference
01	Basic Ed	1100	Prop Tax	3,022,716.00	3,138,879.14	(116,163.14)	19,693,325.00	19,720,391.22	(27,066.22)			
03	Drop Out Reengagement	2100	Tuition & Fees	10,000.00	30,339.72	(20,339.72)	0.00	19,670.73	(19,670.73)			
		2200	Sale of Supplies	0.00	873.00	(873.00)						
31	CTE PHS	2300	Interest	30,000.00	81,297.43	(51,297.43)	1,461,994.00	1,501,816.51	(39,822.51)			
34	CTE HMS	2500	Gifts & Donations	10,000.00	9,487.21	512.79	118,185.00	147,223.96	(29,038.96)			
		2600	Fines & Damages	2,000.00	2,488.91	(488.91)						
		2700	Rentals	3,500.00	179.76	3,320.24						
		2800	Insurance Recoveries	0.00	1,139.96	(1,139.96)						
		2900	Local Support	4,000.00	1,953.24	2,046.76						
		2900	Missoula Childrens Theatre	4,000.00	3,402.00	598.00						
97	District Wide Support	2910	E-rate Rebate	90,516.00	87,315.77	3,200.23	5,376,314.00	5,054,106.89	322,207.11			
		3100	Apportionment	20,344,500.00	20,523,512.18	(179,012.18)						
		3300	LEA	2,001,927.00	1,823,951.67	177,975.33						
		4158-01	Academic Acceleration	0.00	2,042.59	(2,042.59)						
		4158-06	Truancy Allocation	0.00	4,738.57	(4,738.57)						
		5200	PILT	50,000.00	185,563.56	(135,563.56)						
		7301	Nonhigh Participation	15,000.00	25,328.00	(10,328.00)						
		9100	Sale of Bonds (vehicles, equipment)	0.00	0.00	0.00						
	<b>Subtotal</b>			<b>25,588,159.00</b>	<b>25,922,492.71</b>	<b>(334,333.71)</b>	<b>26,649,818.00</b>	<b>26,443,209.31</b>	<b>206,608.69</b>	<b>(1,061,659.00)</b>	<b>(520,716.60)</b>	<b>540,942.40</b>
21	Special Ed	3121		716,272.00	738,723.34	(22,451.34)	3,454,614.00	3,541,529.44	(86,915.44)			
		4121		2,819,410.00	2,812,099.88	7,310.12						
		6321		2,500.00	6,838.73	(4,338.73)						
	<b>Subtotal Special Ed</b>			<b>3,538,182.00</b>	<b>3,557,661.95</b>	<b>(19,479.95)</b>	<b>3,454,614.00</b>	<b>3,541,529.44</b>	<b>(86,915.44)</b>	<b>83,568.00</b>	<b>16,132.51</b>	<b>(67,435.49)</b>
2200	Special Ed - Infants	4122		110,668.00	111,558.02	(890.02)	110,668.00	114,216.41	(3,548.41)	0.00	(2,658.39)	(2,658.39)
2400	Special Ed - Federal	6124-00		504,637.00	504,637.00	0.00	484,993.00	484,995.00	(2.00)	19,644.00	19,642.00	(2.00)
2410	Special Ed - Federal	6124-10		18,337.00	18,337.00	0.00	17,711.00	17,624.00	87.00	626.00	713.00	(87.00)
3860	Perkins	6138		21,075.00	18,129.00	2,946.00	20,254.00	17,424.00	2,830.00	821.00	705.00	(116.00)
5100	Title I	6151		650,537.00	689,043.90	(38,506.90)	625,218.00	662,223.83	(37,005.83)	25,319.00	26,820.07	(1,501.07)
5210	Title II	6152-10		92,117.00	98,252.49	(6,135.49)	88,534.00	94,428.15	(5,894.15)	3,583.00	3,824.34	(241.34)
5220	Rural & Low Income	6152-20		45,000.00	16,315.00	28,685.00	43,248.00	15,679.96	27,568.04	1,752.00	635.04	(1,116.96)
5250	Title IV - Student Support	6152-50		19,301.00	24,218.30	(4,917.30)	18,550.00	23,275.64	(4,725.64)	751.00	942.66	(191.66)
5320	Migrant Ed	6153-20		421,951.00	347,346.49	74,604.51	405,527.00	333,957.12	71,569.88	16,424.00	13,389.37	(3,034.63)
5325	Migrant Ed - Summer	6153-25		80,000.00	113,717.98	(33,717.98)	76,885.00	109,291.67	(32,406.67)	3,115.00	4,426.31	(1,311.31)
5500	LAP - State	4155-00		1,051,046.00	1,049,357.92	1,688.08	1,010,137.00	1,013,132.10	(2,995.10)	40,909.00	36,225.82	(4,683.18)
5505	LAP - High Poverty	4155-05		712,852.00	712,104.45	747.55	713,848.00	703,839.30	10,008.70	(996.00)	8,265.15	(9,261.15)
5803	Nat'l Board Certs	4158-03		108,943.00	143,517.51	(34,574.51)	108,944.00	143,555.94	(34,611.94)	(1.00)	(38.43)	(37.43)
5830	CCRT Counselors	4158-30		0.00	0.00	0.00	0.00	3,560.00	(3,560.00)	0.00	(3,560.00)	(3,560.00)
5835	OSSI Grants	4158-35		0.00	35,253.86	(35,253.86)	0.00	38,563.39	(38,563.39)	0.00	(3,309.53)	(3,309.53)
5840	TPEP Teachers	4158-40		13,810.00	14,300.73	(490.73)	12,906.00	13,384.44	(478.44)	904.00	916.29	(12.29)
5890	Computer Science & Ed	4158-90		0.00	5,329.01	(5,329.01)	0.00	4,980.39	(4,980.39)	0.00	348.62	(348.62)
5895	Alt. Route to Teaching	4158-95		0.00	2,500.00	(2,500.00)	0.00	2,500.00	(2,500.00)	0.00	0.00	0.00
5899	Grant Reserve	4158-99		650,000.00	0.00	650,000.00	654,437.00	0.00	654,437.00	(4,437.00)	0.00	4,437.00
6400	LEP Title III	6164-00		75,049.00	59,803.07	15,245.93	72,128.00	57,475.32	14,652.68	2,921.00	2,327.75	(593.25)
6410	Emergency Immigrant	6164-10		10,000.00	0.00	10,000.00	0.00	0.00	0.00	10,000.00	0.00	(10,000.00)
6420	Immigrant Competetive	6164-20		0.00	0.00	0.00	9,610.00	0.00	9,610.00	(9,610.00)	0.00	9,610.00
6500	Trans. Bilingual	4165		873,138.00	838,333.70	34,804.30	839,152.00	704,559.53	134,592.47	33,986.00	133,774.17	99,788.17
7100	Traffic Safety	2171		57,000.00	59,544.00	(2,544.00)	57,650.00	60,073.04	(2,423.04)	(650.00)	(529.04)	120.96
7400	Highly Capable	4174		68,185.00	68,835.85	(650.85)	58,061.00	58,316.00	(255.00)	10,124.00	10,519.85	(395.85)
7930	Bridge to College	8200-30		2,650.00	411.04	2,238.96	2,650.00	411.04	2,238.96	0.00	0.00	0.00
7940	CRMI-SYAYD (HMS)	8200-40		79,320.00	0.00	79,320.00	79,320.00	0.00	79,320.00	0.00	0.00	0.00
7943	CRMI-GEO (PHS)	8200-43		0.00	19,298.00	(19,298.00)	0.00	19,298.00	(19,298.00)	0.00	0.00	0.00
7945	CRMI-IA (PHS)	8200-45		64,500.00	3,335.00	61,165.00	64,500.00	3,335.00	61,165.00	0.00	0.00	0.00
7951	Gear Up	6300		5,000.00	24,266.83	(19,266.83)	5,000.00	24,208.75	(19,208.75)	0.00	58.08	(58.08)
8900	Community Service	6189		58,135.00	44,279.79	13,855.21	83,135.00	52,667.03	30,467.97	(25,000.00)	(8,387.24)	16,612.76
	<b>Subtotal</b>			<b>5,793,251.00</b>	<b>5,022,025.94</b>	<b>771,225.06</b>	<b>5,663,066.00</b>	<b>4,776,975.05</b>	<b>886,090.95</b>	<b>130,185.00</b>	<b>245,050.89</b>	<b>114,865.89</b>
98	Food Service	4198	State	20,810.00	27,801.87	(6,991.87)	1,286,836.00	1,224,134.18	62,701.82			
		6198-01	Federal (Breakfast)	197,000.00	181,859.25	15,140.75						
		6198-04	Federal (Lunch)	755,000.00	708,278.62	46,721.38						
		2298	Local	130,000.00	134,414.93	(4,414.93)						
		6998	Commodities	95,000.00	83,095.19	11,904.81						
	<b>Subtotal</b>			<b>1,197,810.00</b>	<b>1,135,449.86</b>	<b>62,360.14</b>	<b>1,286,836.00</b>	<b>1,224,134.18</b>	<b>62,701.82</b>	<b>(89,026.00)</b>	<b>(88,684.32)</b>	<b>341.68</b>
9900	Transportation	4199		1,318,000.00	1,515,947.20	(197,947.20)	1,351,346.00	1,320,456.99	30,889.01			
	<b>Subtotal</b>			<b>1,318,000.00</b>	<b>1,515,947.20</b>	<b>(197,947.20)</b>	<b>1,351,346.00</b>	<b>1,320,456.99</b>	<b>30,889.01</b>	<b>(33,346.00)</b>	<b>195,490.21</b>	<b>228,836.21</b>
	<b>Totals</b>			<b>37,435,402.00</b>	<b>37,153,577.66</b>	<b>281,824.34</b>	<b>38,405,680.00</b>	<b>37,306,304.97</b>	<b>1,099,375.03</b>	<b>(970,278.00)</b>	<b>(152,727.31)</b>	<b>817,550.69</b>

**PROSSER SCHOOL DISTRICT NO. 116**  
**2018-2019 Budget Status Report**  
**10--General Fund-- FUND BALANCE -- AGENCY ACCOUNTS -- Revised -- BUDGET-STATUS-REPORT**  
**Fiscal Year 2018 (September 1, 2018 - August 31, 2019)**

For the PROSSER SCHOOL DISTRICT NO. 116 School District for the Month of August, 2019

<u>A. REVENUES/OTHER FIN. SOURCES</u>	<u>ANNUAL BUDGET</u>	<u>ACTUAL FOR MONTH</u>	<u>ACTUAL FOR YEAR</u>	<u>ENCUMBRANCES</u>	<u>BALANCE</u>	<u>PERCENT</u>
1000 Local Taxes (Includes PILT)	3,022,716	218,600.62	3,324,442.70		-301,726.70	109.98
2000 Local Support Nontax	341,016	14,829.15	412,435.93		-71,419.93	120.94
3000 State, General Purpose	23,062,699	2,387,103.17	23,086,187.19		-23,488.19	100.10
4000 State, Special Purpose	7,746,862	712,812.38	7,343,721.16		403,140.84	94.80
5000 Federal, General Purpose	50,000	-185,563.56	0.00		50,000.00	0.00
6000 Federal, Special Purpose	3,050,639	341,990.44	2,938,418.64		112,220.36	96.32
7000 Revenues Fr Oth Sch Dist	15,000	0.00	25,328.00		-10,328.00	168.85
8000 Other Agencies and Associates	146,470	3,335.00	23,044.04		123,425.96	15.73
9000 Other Financing Sources	0	0.00	0.00		0.00	0.00
<b><u>Total REVENUES/OTHER FIN. SOURCES</u></b>	<b>37,435,402</b>	<b>3,493,107.20</b>	<b>37,153,577.66</b>		<b>281,824.34</b>	<b>99.25</b>
<b><u>B. EXPENDITURES</u></b>						
00 Regular Instruction	19,693,325	1,787,297.93	19,740,061.95	0.00	-46,736.95	100.24
10 Federal Stimulus	0	0.00	0.00	0.00	0.00	0.00
20 Special Ed Instruction	4,067,986	399,559.80	4,158,364.85	0.00	-90,378.85	102.22
30 Voc. Ed Instruction	1,600,433	289,912.36	1,666,464.47	0.00	-66,031.47	104.13
40 Skills Center Instruction	0	0.00	0.00	0.00	0.00	0.00
50+60 Compensatory Ed Instruct.	4,679,124	507,451.69	3,924,406.78	0.00	754,717.22	83.87
70 Other Instructional Pgms	267,181	54,829.52	165,641.83	0.00	101,539.17	62.00
80 Community Services	83,135	52,667.03	52,667.03	0.00	30,467.97	63.35
90 Support Services	8,014,496	849,154.46	7,598,698.06	0.00	415,797.94	94.81
<b><u>Total EXPENDITURES</u></b>	<b>38,405,680</b>	<b>3,940,872.79</b>	<b>37,306,304.97</b>	<b>0.00</b>	<b>1,099,375.03</b>	<b>97.14</b>
<b><u>C. OTHER FIN. USES TRANS. OUT (GL 536)</u></b>	<b>0</b>	<b>0.00</b>	<b>0.00</b>			
<b><u>D. OTHER FINANCING USES (GL 535)</u></b>	<b>0</b>	<b>0.00</b>	<b>0.00</b>			
<b><u>E. EXCESS OF REVENUES/OTHER FIN. SOURCES OVER (UNDER) EXP/OTH FIN USES (A-B-C-D)</u></b>	<b>-970,278</b>	<b>-447,765.59</b>	<b>-152,727.31</b>		<b>817,550.69</b>	<b>-84.26</b>
<b><u>F. TOTAL BEGINNING FUND BALANCE</u></b>	<b>3,650,000</b>		<b>3,908,629.74</b>			
<b><u>G. G/L 898 PRIOR YEAR ADJUSTMENTS (+OR-)</u></b>	<b>XXXXXXXX</b>		<b>0.00</b>			
<b><u>H. TOTAL ENDING FUND BALANCE (E+F + OR - G)</u></b>	<b>2,679,722</b>		<b>3,755,902.43</b>			
<b><u>I. ENDING FUND BALANCE ACCOUNTS:</u></b>						
G/L 810 Restricted For Other Items	0		0.00			
G/L 815 Restric Unequalized Deduct Rev	0		0.00			
G/L 821 Restricted for Carryover	75,000		361,872.20			
G/L 825 Restricted for Skills Center	0		0.00			
G/L 828 Restricted for C/O of FS Rev	0		0.00			
G/L 830 RESERVE FOR DEBT	0		0.00			
G/L 835 Restricted For Arbitrage Rebate	0		0.00			
G/L 840 Nonspnd FB - Invent/Prepd Itms	125,000		131,802.13			
G/L 845 Restricted for Self-Insurance	0		0.00			
G/L 850 Restricted for Uninsured Risks	0		0.00			
G/L 870 Committed to Other Purposes	0		0.00			
G/L 872 Committed to Econmc Stabilizatr	0		0.00			
G/L 875 Assigned Contingencies	0		0.00			
G/L 884 Assigned to Other Cap Projects	0		0.00			
G/L 888 Assigned to Other Purposes	0		0.00			
G/L 890 Unassigned Fund Balance	2,479,722		3,262,228.10			
G/L 891 Unassigned Min Fnd Bal Policy	0		0.00			
<b><u>TOTAL</u></b>	<b>2,679,722</b>		<b>3,755,902.43</b>			

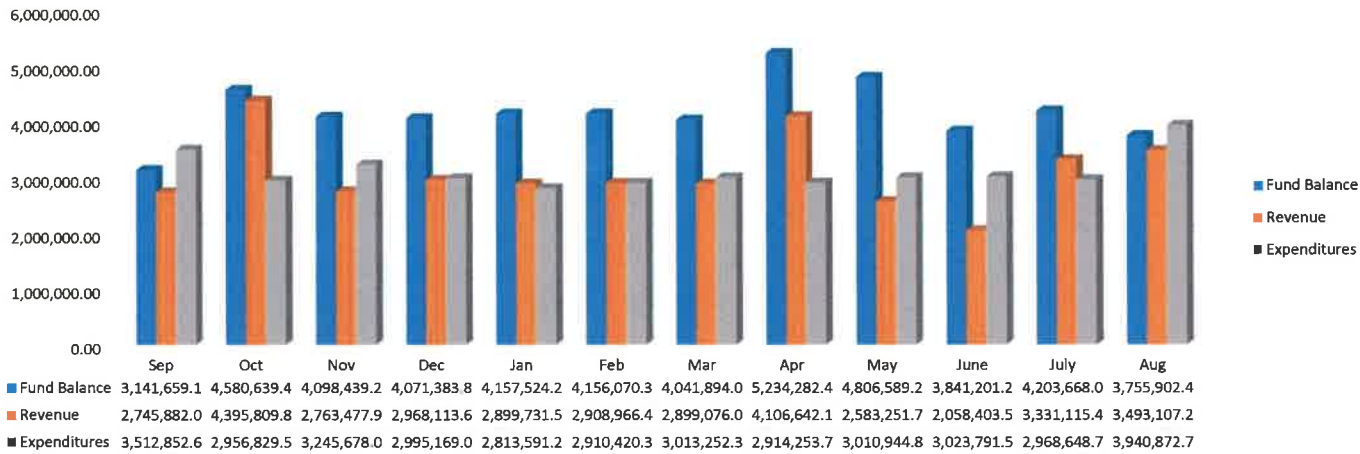


Prosser School District  
General Fund Budget Status 2018-19

Actual Enrollment FTE per month													Average	Budget	over/(under)												
Apportionment Percentage													2,564.01	2,547.00	17.01												
Sept 9.0%													Sept	Oct	Nov	Dec	Jan	Feb	Mar	Apr	May	June	July	Aug	Total	Original	% of
9.0%													9.0%	9.0%	5.5%	9.0%	9.0%	9.0%	9.0%	9.0%	5.5%	6.0%	10.0%	10.0%	YTD	Budget	Budget
<b>Revenues:</b>																											
1000	Property Taxes	33,906.88	1,315,576.27	354,063.76	34,380.49	21,001.56	43,667.38	114,627.79	798,947.88	343,163.44	31,429.32	15,077.31	33,037.06	3,138,879.14	3,022,716	103.84%											
2000	Interest	5,340.33	4,966.42	5,143.01	7,363.78	6,716.78	6,594.81	6,623.47	7,133.75	7,274.51	9,655.74	7,967.39	6,517.44	81,297.43	30,000	270.99%											
	Food Service	11,685.76	15,994.19	15,298.81	12,398.32	10,845.63	10,548.55	12,207.55	13,193.01	11,778.80	12,876.03	4,419.10	3,169.18	134,414.93	130,000	103.40%											
	Traffic Safety	6,945.00	4,601.00	6,609.00	2,185.00	4,075.00	7,480.00	7,279.00	4,965.00	5,275.00	8,360.00	1,135.00	635.00	59,544.00	57,000	104.46%											
	Other Local	9,126.03	10,578.45	5,572.43	-1,830.37	-344.24	-4,417.67	5,340.31	7,862.80	3,963.47	9,805.40	-300.34	4,507.53	49,863.80	33,500	148.85%											
	E-rate	87,295.77	0.00	20.00	0.00	0.00	0.00	0.00	0.00	0.00	0.00	0.00	0.00	87,315.77	90,516	96.46%											
2000	Subtotal (w/o taxes)	120,392.89	36,140.06	32,643.25	20,116.73	21,293.17	20,205.69	31,450.33	33,154.56	28,291.78	40,697.17	13,221.15	14,829.15	412,435.93	341,016	120.94%											
3000	Apportionment	1,831,261.61	1,831,261.62	1,119,104.32	1,831,261.61	1,968,883.34	1,845,989.71	1,842,854.97	1,833,050.61	1,104,315.54	1,223,918.27	2,054,972.57	2,036,638.01	20,523,512.18	20,344,500	100.88%											
	Levy Assistance	0.00	209,708.27	396,188.11	46,587.34	0.00	0.00	0.00	488,150.69	374,166.87	32,566.81	0.00	276,583.58	1,823,951.67	2,001,927	91.11%											
	Special Ed-Excess Cost	64,481.44	64,481.44	39,405.33	64,481.44	72,193.69	67,323.44	66,149.79	64,647.04	41,686.96	46,110.52	73,880.67	73,881.58	738,723.34	716,272	103.13%											
3000	Subtotal	1,895,743.05	2,105,451.33	1,554,697.76	1,942,330.39	2,041,077.03	1,913,313.15	1,909,004.76	2,385,848.34	1,520,169.37	1,302,595.60	2,128,853.24	2,387,103.17	23,086,187.19	23,062,699	100.10%											
4000	State Grants	427,275.71	423,636.10	569,297.42	520,732.99	472,708.59	508,169.82	504,019.30	503,152.69	315,976.64	395,586.80	705,673.03	561,217.66	5,907,446.75	5,778,862	102.23%											
	Budget Capacity	0.00	0.00	0.00	0.00	0.00	0.00	0.00	0.00	0.00	0.00	0.00	0.00	0.00	650,000	0.00%											
	Transportation	130,373.65	130,373.65	79,672.79	130,373.65	130,373.65	163,172.29	137,648.90	136,435.25	83,377.10	19,555.72	222,995.83	151,594.72	1,515,947.20	1,318,000	115.02%											
4000	Subtotal	557,649.36	554,009.75	569,297.42	651,106.64	603,082.24	671,342.11	641,668.20	639,587.94	399,353.74	415,142.52	928,668.86	712,812.38	7,343,721.16	7,746,862	94.80%											
5000	PILT	0.00	150,422.05	2,686.28	0.00	0.00	0.00	0.00	0.00	32,455.23	0.00	0.00	0.00	185,563.56	50,000	371.13%											
6000	Federal Grants	138,189.90	234,210.39	250,089.45	320,179.37	213,277.58	248,618.16	201,913.92	229,805.46	246,310.17	268,538.91	245,294.89	341,990.44	2,938,418.64	3,050,639	96.32%											
7000	Non-High (Paterson)	0.00	0.00	0.00	0.00	0.00	11,820.00	0.00	0.00	13,508.00	0.00	0.00	0.00	25,328.00	15,000	168.85%											
8000	Other Programs	0.00	0.00	0.00	0.00	0.00	0.00	411.04	19,298.00	0.00	0.00	0.00	3,335.00	23,044.04	146,470	15.73%											
	<b>Total Revenues</b>	<b>2,745,882.08</b>	<b>4,395,809.85</b>	<b>2,763,477.92</b>	<b>2,968,113.62</b>	<b>2,899,731.58</b>	<b>2,908,966.49</b>	<b>2,899,076.04</b>	<b>4,106,642.18</b>	<b>2,583,251.73</b>	<b>2,058,403.52</b>	<b>3,331,115.45</b>	<b>3,493,107.20</b>	<b>37,153,577.66</b>	<b>37,435,402.00</b>	<b>99.25%</b>											
<b>Expenditures:</b>																											
	Certificated Wages	1,503,273.13	1,244,759.55	1,275,505.62	1,224,389.96	1,186,436.46	1,224,187.85	1,207,124.09	1,200,309.29	1,275,880.76	1,249,509.18	1,378,032.97	1,459,371.19	15,428,780.05	14,999,351	102.86%											
	Classified Wages	499,731.54	532,421.08	562,805.32	540,176.34	512,685.52	516,765.22	558,566.94	531,159.49	535,017.35	517,481.77	533,151.28	539,554.56	6,379,516.41	6,304,877	101.18%											
	Payroll Taxes and Benefits	802,489.59	767,222.44	768,403.55	761,470.27	750,922.98	754,648.11	771,172.10	741,305.57	781,835.14	759,206.53	790,658.41	789,599.56	9,238,934.25	9,409,865	98.18%											
	Materials, Supplies, Operating Costs	707,358.42	412,426.51	638,963.55	469,132.46	363,546.26	414,819.21	476,389.24	441,479.41	418,211.64	497,594.02	266,806.06	1,152,347.48	6,259,074.26	7,041,587	88.89%											
	Budget Capacity	0.00	0.00	0.00	0.00	0.00	0.00	0.00	0.00	0.00	0.00	0.00	0.00	0.00	650,000	0.00%											
	<b>Total Expenditures</b>	<b>3,512,852.68</b>	<b>2,956,829.58</b>	<b>3,245,678.04</b>	<b>2,995,169.03</b>	<b>2,813,591.22</b>	<b>2,910,420.39</b>	<b>3,013,252.37</b>	<b>2,914,253.76</b>	<b>3,010,944.89</b>	<b>3,023,791.50</b>	<b>2,968,648.72</b>	<b>3,940,872.79</b>	<b>37,306,304.97</b>	<b>38,405,680</b>	<b>97.14%</b>											
	Fund Balance Increase/(Decrease)	(766,970.60)	1,438,980.27	(482,200.12)	(27,055.41)	86,140.36	(1,453.90)	(114,176.33)	1,192,388.42	(427,693.16)	(965,387.98)	362,466.73	(447,765.59)	(152,727.31)	(970,278)												
	Beginning Fund Balance	3,908,629.74	3,141,659.14	4,580,639.41	4,098,439.29	4,071,383.88	4,157,524.24	4,156,070.34	4,041,894.01	5,234,282.43	4,806,589.27	3,841,201.29	4,203,668.02	3,908,629.74													
	Ending Fund Balance	3,141,659.14	4,580,639.41	4,098,439.29	4,071,383.88	4,157,524.24	4,156,070.34	4,041,894.01	5,234,282.43	4,806,589.27	3,841,201.29	4,203,668.02	3,755,902.43	3,755,902.43													

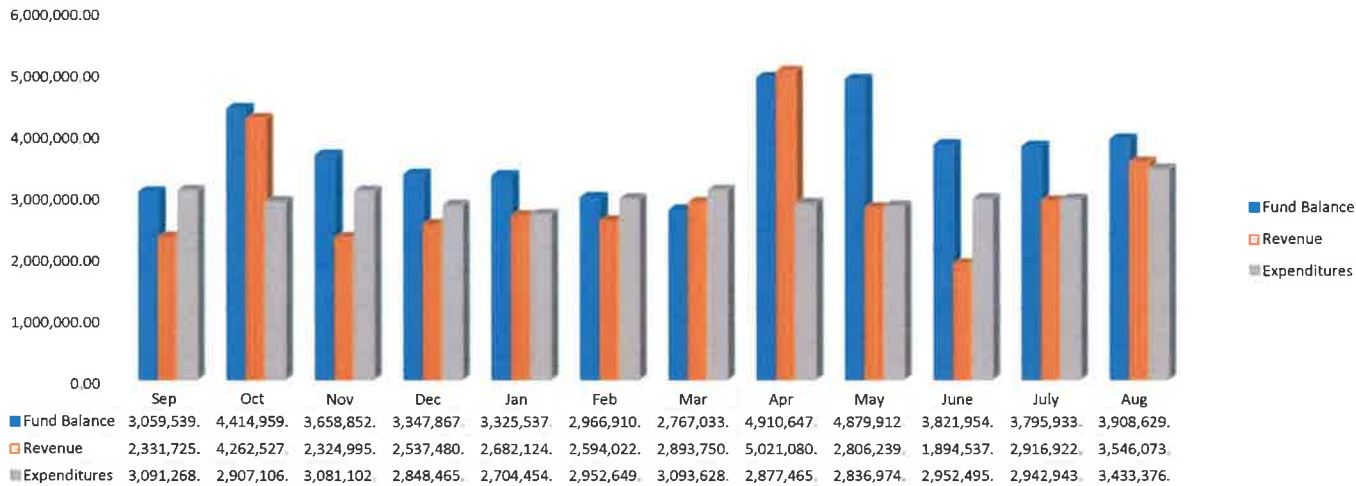
Apportionment for Sep - Dec is based on budgeted FTE; Jan - Aug is actual YTD average

### 2018-19 General Fund



TOTAL YTD SUMMARY (Thru Aug 2019)	
Revenues	37,153,577.66
Expenditures	37,306,304.97
REVENUES - % OF BUDGET	
Budget	37,435,402
% Received	99.25%
EXPENDITURES - % OF BUDGET	
Budget	38,405,680
% Expended	97.14%
FUND BALANCE/ACTUAL EXPEND.	
	10.07%

### 2017-18 General Fund



TOTAL YTD SUMMARY (Thru Aug 2018)	
Revenues	35,811,480.19
Expenditures	35,721,931.97
REVENUES - % OF ACTUAL	
Actual	35,811,480
% Received	100.00%
EXPENDITURES - % OF ACTUAL	
Actual	35,721,932
% Expended	100.00%
FUND BALANCE/ACTUAL EXPEND.	
	10.94%

**General Fund  
2018-19 Year End  
With Comparative Data**

	<u>2012-13 Actual</u>	<u>2013-14 Actual</u>	<u>2014-15 Actual</u>	<u>2015-16 Actual</u>	<u>2016-17 Actual</u>	<u>2017-18 Actual</u>	<u>2018-19 Actual</u>	
<b>Beginning Fund Balance</b>	\$4,252,273	\$3,758,847	\$2,971,009	\$3,112,196	\$3,183,457	\$3,819,082	\$3,908,629	
<b>Revenues</b>								
Local Taxes	\$3,437,020	\$3,506,552	\$3,718,377	\$3,990,782	\$4,080,870	\$4,187,630	\$3,138,879	
Local Nontax	426,842	388,449	359,426	487,203	442,135	386,387	412,436	
State, General Purpose	16,677,373	17,561,669	18,169,714	19,639,719	20,364,874	21,246,350	23,086,187	
State, Special Purpose	3,941,161	4,690,582	5,052,575	5,351,691	5,348,615	6,479,124	7,343,721	
Federal, General Purpose (PILT)	69,652	73,614	87,202	57,344	160,936	49,364	185,564	
Federal, Special Purpose	3,028,083	2,880,741	2,953,013	2,935,164	2,892,418	2,894,032	2,938,419	
Non High, Paterson	24,022	31,256	26,100	23,711	6,335	42,727	25,328	
Other Agencies	-	2,724	9,582	7,840	1,978	138,865	23,044	
Other Financing Sources	0	0	0	0	0	387,000	0	
	<u>\$27,604,153</u>	<u>\$29,135,587</u>	<u>\$30,375,989</u>	<u>\$32,493,454</u>	<u>\$33,298,161</u>	<u>\$35,811,479</u>	<u>\$37,153,578</u>	
<b>Expenditures</b>								
Regular Instruction	\$15,072,324	\$15,691,357	\$15,945,010	\$17,477,707	\$17,429,216	\$18,327,630	\$19,740,062	
Federal Stimulus	0	0	-	-	-	-	-	
Special Education	2,911,743	3,188,816	3,221,996	3,486,891	3,585,229	3,999,400	4,158,365	
Vocational Ed	1,036,399	1,043,216	1,107,503	1,154,807	1,165,608	1,380,957	1,666,464	
Compensatory Ed	2,387,198	2,806,289	2,864,040	2,922,171	2,880,407	3,618,927	3,924,407	
Other Programs	132,639	103,915	74,533	87,983	85,198	253,762	165,642	
Community Services	67,621	71,281	48,619	41,706	38,202	67,770	52,667	
Support Services	6,489,655	6,968,551	6,973,101	7,250,928	7,478,676	8,073,486	7,598,698	
Other Financing Uses	0	50,000	0	0	0	0	0	
	<u>\$28,097,579</u>	<u>\$29,923,425</u>	<u>\$30,234,802</u>	<u>\$32,422,193</u>	<u>\$32,662,536</u>	<u>\$35,721,932</u>	<u>\$37,306,305</u>	
<b>Fund Balance Inc/(Decrease)</b>	(\$493,426)	(\$787,838)	\$141,187	\$71,261	\$635,625	\$89,547	(\$152,727)	
<b>Total Ending Fund Balance</b>	<u>\$3,758,847</u>	<u>\$2,971,009</u>	<u>\$3,112,196</u>	<u>\$3,183,457</u>	<u>\$3,819,082</u>	<u>\$3,908,629</u>	<u>\$3,755,902</u>	10.1%
<b>Less: Restrictions *</b>	(220,253)	(218,150)	(190,772)	(195,702)	(256,001)	(402,986) *	(493,674)	
<b>Total Unassigned Fund Balance</b>	<u>\$3,538,594</u>	<u>\$2,752,859</u>	<u>\$2,921,424</u>	<u>\$2,987,755</u>	<u>\$3,563,081</u>	<u>\$3,505,643</u>	<u>\$3,262,228</u>	8.7%
<b>Food Service Inventory</b>	28,829	26,038	16,962	5,466	11,623	40,353	31,791	
<b>Prepaid Items</b>	72,562	120,458	95,151	64,247	138,842	172,241	100,011	
<b>Traffic Safety Carry Forward</b>	-	4,406	4,123	6,519	4,893	7,622	4,089	
<b>Learning Assistance Program C/F</b>	44,264	16,332	67,615	66,806	63,120	6,423	1,748	
<b>LAP High Poverty Carry Forward</b>	-	-	-	-	-	88,264	67,893	
<b>Career and Technical Education C/F</b>	74,598	50,916	6,921	36,767	33,652	88,083	92,652	
<b>Transportation Carry Forward</b>	-	-	-	-	-	-	195,490	
<b>State Special Ed-Infants &amp; Toddlers C/F</b>	-	-	-	15,897	3,871	-	-	
<b>* Totals</b>	<u>\$220,253</u>	<u>\$218,150</u>	<u>\$190,772</u>	<u>\$195,702</u>	<u>\$256,001</u>	<u>\$402,986</u>	<u>\$493,674</u>	

**PROSSER SCHOOL DISTRICT NO. 116**  
**2018-2019 Budget Status Report**  
**20--Capital Projects-- FUND BALANCE -- AGENCY ACCOUNTS -- Revised -- BUDGET-STATUS-REPORT**  
**Fiscal Year 2018 (September 1, 2018 - August 31, 2019)**

For the PROSSER SCHOOL DISTRICT NO. 116 School District for the Month of August, 2019

<u>A. REVENUES/OTHER FIN. SOURCES</u>	<u>ANNUAL BUDGET</u>	<u>ACTUAL FOR MONTH</u>	<u>ACTUAL FOR YEAR</u>	<u>ENCUMBRANCES</u>	<u>BALANCE</u>	<u>PERCENT</u>
1000 Local Taxes	0	0.00	0.00		0.00	0.00
2000 Local Support Nontax	611,800	121,416.43	1,412,917.76		-801,117.76	230.94
3000 State, General Purpose	0	0.00	0.00		0.00	0.00
4000 State, Special Purpose	0	0.00	0.00		0.00	0.00
5000 Federal, General Purpose	0	0.00	0.00		0.00	0.00
6000 Federal, Special Purpose	0	0.00	0.00		0.00	0.00
7000 Revenues Fr Oth Sch Dist	0	0.00	0.00		0.00	0.00
8000 Other Agencies and Associates	0	0.00	0.00		0.00	0.00
9000 Other Financing Sources	0	0.00	0.00		0.00	0.00
<b><u>Total REVENUES/OTHER FIN. SOURCES</u></b>	<b>611,800</b>	<b>121,416.43</b>	<b>1,412,917.76</b>		<b>-801,117.76</b>	<b>230.94</b>
<b><u>B. EXPENDITURES</u></b>						
10 Sites	0	0.00	0.00	0.00	0.00	0.00
20 Buildings	27,838,979	4,333,240.73	9,225,926.00	0.00	18,613,053.00	33.14
30 Equipment	11,800	0.00	0.00	0.00	11,800.00	0.00
40 Energy	0	0.00	0.00	0.00	0.00	0.00
50 Sales & Lease Expenditure	0	0.00	0.00	0.00	0.00	0.00
60 Bond Issuance Expenditure	0	0.00	0.00	0.00	0.00	0.00
90 Debt	0	575.00	575.00	0.00	-575.00	0.00
<b><u>Total EXPENDITURES</u></b>	<b>27,850,779</b>	<b>4,333,240.73</b>	<b>9,226,501.00</b>	<b>0.00</b>	<b>18,624,278.00</b>	<b>33.13</b>
<b><u>C. OTHER FIN. USES TRANS. OUT (GL 536)</u></b>	<b>0</b>	<b>0.00</b>	<b>0.00</b>			
<b><u>D. OTHER FINANCING USES (GL 535)</u></b>	<b>0</b>	<b>0.00</b>	<b>0.00</b>			
<b><u>E. EXCESS OF REVENUES/OTHER FIN.SOURCES OVER(UNDER) EXP/OTH FIN USES (A-B-C-D)</u></b>	<b>-27,238,979</b>	<b>-4,211,824.30</b>	<b>-7,813,583.24</b>		<b>19,425,395.76</b>	<b>-71.31</b>
<b><u>F. TOTAL BEGINNING FUND BALANCE</u></b>	<b>68,264,805</b>		<b>68,095,807.83</b>			
<b><u>G. G/L 898 PRIOR YEAR ADJUSTMENTS(+OR-)</u></b>	<b>XXXXXXXXXX</b>		<b>0.00</b>			
<b><u>H. TOTAL ENDING FUND BALANCE (E+F + OR - G)</u></b>	<b>41,025,826</b>		<b>60,282,224.59</b>			
<b><u>I. ENDING FUND BALANCE ACCOUNTS:</u></b>						
G/L 810 Restricted For Other Items	0		0.00			
G/L 825 Restricted for Skills Center	0		0.00			
G/L 830 Restricted for Debt Service	0		0.00			
G/L 835 Restrictd For Arbitrage Rebate	0		0.00			
G/L 840 Nonspnd FB - Invent/Prepd Itms	0		0.00			
G/L 850 Restricted for Uninsured Risks	0		0.00			
G/L 861 Restricted from Bond Proceeds	40,425,826		60,282,224.59			
G/L 862 Committed from Levy Proceeds	0		0.00			
G/L 863 Restricted from State Proceeds	0		0.00			
G/L 864 Restricted from Fed Proceeds	0		0.00			
G/L 865 Restricted from Other Proceeds	0		0.00			
G/L 866 Restrictd from Impact Proceeds	0		0.00			
G/L 867 Restricted from Mitigation Fees	0		0.00			
G/L 869 Restricted fr Undistr Proceeds	0		0.00			
G/L 870 Committed to Other Purposes	0		0.00			
G/L 889 Assigned to Fund Purposes	600,000		0.00			
G/L 890 Unassigned Fund Balance	0		0.00			
<b><u>TOTAL</u></b>	<b>41,025,826</b>		<b>60,282,224.59</b>			

**New Prosser High School  
Actual Costs Through August 31, 2019**

	<u>Budget</u>	<u>2016-17</u>	<u>2017-18</u>	<u>2018-19</u>	<u>Project Totals</u>
Chervenell Construction	52,205,000				
Sales Tax	<u>4,489,630</u>				
	56,694,630			6,454,384.36	6,454,384.36
Architect Fee	3,197,708	119,922.72	1,197,660.21	1,367,484.85	2,685,067.78
Educational Specifications	79,961	79,961.00	38,588.63		118,549.63
Energy Report	10,000		2,000.00		2,000.00
WSEO Fee	2,000				0.00
Architect Reimbursables	55,000	23.65		17,222.26	17,245.91
Construction Management	1,417,366		431,707.75	596,726.00	1,028,433.75
Value Engineering	213,314		158,861.25		158,861.25
Constructability Review	213,314				0.00
Building Commissioning	226,779			6,399.42	6,399.42
Construction Inspection/Testing	400,000			51,428.10	51,428.10
Topographic Survey	22,277	22,277.50		2,500.00	24,777.50
Coffman Survey, Boundary Adj	24,755		27,755.00		27,755.00
Geotechnical Study	50,550	14,900.00	29,945.00	13,450.00	58,295.00
GPI Wall and Slab Analysis	3,800			3,800.00	3,800.00
GPI Cultural Study	13,300			13,300.00	13,300.00
GPI-Soil Management Plan	5,980				0.00
Soil Removal and Disposal	25,000		20,305.60		20,305.60
Traffic Engineering	12,825		12,825.00		12,825.00
Cemetery Property Purchase	30,000		30,250.00	824.70	31,074.70
SVID Canal to Pipe Cost	61,859		52,962.00	8,897.60	61,859.60
SVID Canal Soil Import for backfill	12,353			12,353.25	12,353.25
SVID Camera existing below grade lines	738			738.48	738.48
Furniture and Equipment	2,078,142			50,619.55	50,619.55
Building Risk Insurance	35,000			38,799.60	38,799.60
Building Permit Fee	147,572		750.00	152,728.57	153,478.57
Plan Review Fee	84,546			84,546.41	84,546.41
City of Prosser Utility Deposit	12,660			12,660.00	12,660.00
Bid Advertising	7,500	280.51		1,034.25	1,314.76
Legal/Administrative	20,000	5,202.50	8,922.20	5,197.50	19,322.20
Project Contingency	1,635,854			-13,979.97	-13,979.97
Misc Costs	10,000				
Const Mgr Consultant		3,761.00			3,761.00
Appraisal for Cemetery Prop		1,800.00	1,500.00		3,300.00
Consulting (Tim Payne)			2,500.00		2,500.00
NCCE			1,180.19		1,180.19
Const workshop and Travel				605.38	605.38
GoPro time lapse camera				6,620.26	6,620.26
Bond Fees			575.00	575.00	1,150.00
Totals	66,804,783	248,128.88	2,018,287.83	8,888,915.57	11,155,332.28

**Whitstran**  
**Actual Costs Through August 31, 2019**

	<u>Budget</u>	<u>2018-19</u>
Construction Costs	5,834,510	
Sales Tax	<u>501,768</u>	
	6,336,278	
Architect Fee	719,961	32,398.25
Civil Engineering	50,000	
Educational Specifications	20,000	20,000.00
Energy Report	10,000	
WSEO Fee	2,000	
Architect Reimbursables	20,000	808.66
Construction Management	158,407	20,439.60
Value Engineering	25,345	
Constructability Review	25,345	
Building Commissioning	25,345	
Construction Inspection/Testing	55,000	
Topographic Survey	30,000	
Geotechnical Study	30,000	
Traffic Engineering	15,000	
Furniture and Equipment	166,726	
Archeological EZ-1	2,500	
Building Risk Insurance	5,000	
Building Permit Fee and Plan Review	47,522	
Bid Advertising	1,500	
Legal/Administrative	2,500	264.00
Project Contingency	316,814	
Misc Costs	45,000	
Totals	8,110,243	73,910.51

**Keene-Riverview**  
**Actual Costs Through August 31, 2019**

	<u>Budget</u>	<u>2018-19</u>
Construction Costs	11,739,914	
Sales Tax	<u>1,009,633</u>	
	12,749,547	
Architect Fee	1,207,660	59,779.22
Civil Engineering	65,000	
Educational Specifications	30,347	30,347.00
Energy Report	10,000	
WSEO Fee	2,000	
Architect Reimbursables	30,000	522.07
Construction Management	318,739	41,127.60
Value Engineering	50,998	
Constructability Review	50,998	
Building Commissioning	50,998	
Construction Inspection/Testing	80,000	
Topographic Survey	30,000	
Geotechnical Study	30,000	
Traffic Engineering	15,000	
Furniture and Equipment	254,991	
Archeological EZ-1	2,500	
Building Risk Insurance	20,000	
Building Permit Fee and Plan Review	95,622	2,605.35
Bid Advertising	2,000	
Legal/Administrative	2,500	264.00
Project Contingency	637,477	
Misc Costs	32,000	
SEPA		500.00
Totals	15,768,377	135,145.24

**Prosser Heights**  
**Actual Costs Through August 31, 2019**

	<u>Budget</u>	<u>2018-19</u>
Construction Costs	11,443,355	
Sales Tax	<u>984,129</u>	
	12,427,484	
Architect Fee	1,262,509	56,844.92
Civil Engineering	65,000	
Educational Specifications	29,586	29,586.00
Energy Report	10,000	
WSEO Fee	2,000	
Architect Reimbursables	30,000	949.12
Construction Management	310,687	40,088.64
Value Engineering	49,710	
Constructability Review	49,710	
Building Commissioning	49,710	
Construction Inspection/Testing	80,000	
Topographic Survey	30,000	
Geotechnical Study	30,000	
Traffic Engineering	15,000	
Furniture and Equipment	248,550	
Archeological EZ-1	2,500	
Building Risk Insurance	19,000	
Building Permit Fee and Plan Review	93,206	
Bid Advertising	2,000	
Legal/Administrative	2,500	561.00
Project Contingency	621,374	
Misc Costs	30,351	
SEPA		500.00
Totals	15,460,877	128,529.68



PROSSER SCHOOL DISTRICT NO. 116  
 2018-2019 Budget Status Report  
 30--Debt Service Fund-- FUND BALANCE -- AGENCY ACCOUNTS -- Revised -- BUDGET-STATUS-REPORT  
 Fiscal Year 2018 (September 1, 2018 - August 31, 2019)

For the PROSSER SCHOOL DISTRICT NO. 116 School District for the Month of August, 2019

	ANNUAL BUDGET	ACTUAL FOR MONTH	ACTUAL FOR YEAR	ENCUMBRANCES	BALANCE	PERCENT
<b>A. REVENUES/OTHER FIN. SOURCES</b>						
1000 Local Taxes	4,092,920	19,778.46	4,084,778.16		8,141.84	99.80
2000 Local Support Nontax	18,000	2,971.88	27,218.90		-9,218.90	151.22
3000 State, General Purpose	0	0.00	0.00		0.00	0.00
5000 Federal, General Purpose	0	0.00	0.00		0.00	0.00
9000 Other Financing Sources	134,700	0.00	109,700.00		25,000.00	81.44
<b>Total REVENUES/OTHER FIN. SOURCES</b>	<b>4,245,620</b>	<b>22,750.34</b>	<b>4,221,697.06</b>		<b>23,922.94</b>	<b>99.44</b>
<b>B. EXPENDITURES</b>						
Matured Bond Expenditures	588,765	0.00	567,265.17	0.00	21,499.83	96.35
Interest On Bonds	2,762,685	0.00	2,759,184.84	0.00	3,500.16	99.87
Interfund Loan Interest	0	0.00	0.00	0.00	0.00	0.00
Bond Transfer Fees	5,000	0.00	713.58	0.00	4,286.42	14.27
Arbitrage Rebate	0	0.00	0.00	0.00	0.00	0.00
Underwriter's Fees	0	0.00	0.00	0.00	0.00	0.00
<b>Total EXPENDITURES</b>	<b>3,356,450</b>	<b>0.00</b>	<b>3,327,163.59</b>	<b>0.00</b>	<b>29,286.41</b>	<b>99.13</b>
<b>C. OTHER FIN. USES TRANS. OUT (GL 536)</b>	<b>0</b>	<b>0.00</b>	<b>0.00</b>			
<b>D. OTHER FINANCING USES (GL 535)</b>	<b>0</b>	<b>0.00</b>	<b>0.00</b>			
<b>E. EXCESS OF REVENUES/OTHER FIN. SOURCES OVER (UNDER) EXP/OTH FIN USES (A-B-C-D)</b>	<b>889,170</b>	<b>22,750.34</b>	<b>894,533.47</b>		<b>5,363.47</b>	<b>0.60</b>
<b>F. TOTAL BEGINNING FUND BALANCE</b>	<b>650,000</b>		<b>761,546.90</b>			
<b>G. G/L 898 PRIOR YEAR ADJUSTMENTS(+OR-)</b>	<b>XXXXXXXXXX</b>		<b>0.00</b>			
<b>H. TOTAL ENDING FUND BALANCE (E+F + OR - G)</b>	<b>1,539,170</b>		<b>1,656,080.37</b>			
<b>I. ENDING FUND BALANCE ACCOUNTS:</b>						
G/L 810 Restricted for Other Items	0		0.00			
G/L 830 Restricted for Debt Service	1,539,170		1,656,080.37			
G/L 835 Restricted For Arbitrage Rebate	0		0.00			
G/L 870 Committed to Other Purposes	0		0.00			
G/L 889 Assigned to Fund Purposes	0		0.00			
G/L 890 Unassigned Fund Balance	0		0.00			
<b>TOTAL</b>	<b>1,539,170</b>		<b>1,656,080.37</b>			

**Schedule of Long-Term Debt**

Description	Buses LGO 12/29/16	Buses LGO 4/12/18	Vehicles LGO 4/12/18	Bond GO 6/29/17	Buses LGO 3/5/19	Totals
Issued	244,770.00			60,485,000.00		60,729,770.00
Principal	(23,729.71)					(23,729.71)
Interest	(2,170.29)					(2,170.29)
Payment	(25,900.00)					(25,900.00)
Bal 8/31/17	221,040.29			60,485,000.00		60,706,040.29
Issued		266,600.00	387,000.00			653,600.00
Principal	(47,405.74)					(47,405.74)
Interest	(4,394.26)			(2,528,041.67)		(2,532,435.93)
Payment	(51,800.00)			(2,528,041.67)		(2,579,841.67)
Bal 8/31/18	173,634.55	266,600.00	387,000.00	60,485,000.00		61,312,234.55
Issued					231,000.00	231,000.00
Principal	(48,406.48)	(49,464.73)	(49,393.95)	(420,000.00)		(567,265.16)
Interest	(3,393.52)	(8,435.27)	(12,406.05)	(2,734,950.00)		(2,759,184.84)
Payment	(51,800.00)	(57,900.00)	(61,800.00)	(3,154,950.00)		(3,326,450.00)
Bal 8/31/19	125,228.07	217,135.27	337,606.05	60,065,000.00	231,000.00	60,975,969.39
Principal	(49,428.36)	(51,977.20)	(52,386.49)	(1,475,000.00)	(46,483.52)	(1,675,275.57)
Interest	(2,371.64)	(5,922.80)	(9,413.51)	(2,691,775.00)	(3,839.73)	(2,713,322.68)
Payment	(51,800.00)	(57,900.00)	(61,800.00)	(4,166,775.00)	(50,323.25)	(4,388,598.25)
Bal 8/31/20	75,799.71	165,158.07	285,219.56	58,590,000.00	184,516.48	59,300,693.82
Principal	(50,471.80)	(53,495.47)	(53,916.72)	(1,610,000.00)	(44,049.69)	(1,811,933.68)
Interest	(1,328.20)	(4,404.53)	(7,883.28)	(2,614,650.00)	(6,273.56)	(2,634,539.57)
Payment	(51,800.00)	(57,900.00)	(61,800.00)	(4,224,650.00)	(50,323.25)	(4,446,473.25)
Bal 8/31/21	25,327.91	111,662.60	231,302.84	56,980,000.00	140,466.79	57,488,760.14
Principal	(25,327.91)	(55,058.08)	(55,491.64)	(1,755,000.00)	(45,547.38)	(1,936,425.01)
Interest	(265.94)	(2,841.92)	(6,308.36)	(2,530,525.00)	(4,775.87)	(2,544,717.09)
Payment	(25,593.85)	(57,900.00)	(61,800.00)	(4,285,525.00)	(50,323.25)	(4,481,142.10)
Bal 8/31/22	0.00	56,604.52	175,811.20	55,225,000.00	94,919.41	55,552,335.13
Principal		(56,604.52)	(57,112.56)	(1,910,000.00)	(47,095.99)	(2,070,813.07)
Interest		(1,233.66)	(4,687.44)	(2,438,900.00)	(3,227.26)	(2,448,048.36)
Payment		(57,838.18)	(61,800.00)	(4,348,900.00)	(50,323.25)	(4,518,861.43)
Bal 8/31/23		0.00	118,698.64	53,315,000.00	47,823.42	53,481,522.06
Principal			(58,623.32)	(2,070,000.00)	(47,823.42)	(2,176,446.74)
Interest			(3,176.68)	(2,339,400.00)	(1,626.00)	(2,344,202.68)
Payment			(61,800.00)	(4,409,400.00)	(49,449.42)	(4,520,649.42)
Bal 8/31/24			60,075.32	51,245,000.00	0.00	51,305,075.32

PROSSER SCHOOL DISTRICT NO. 116  
2018-2019 Budget Status Report

40--Associated Student Body Fund-- FUND BALANCE -- AGENCY ACCOUNTS -- Revised -- BUDGET-STATUS-REPORT  
Fiscal Year 2018 (September 1, 2018 - August 31, 2019)

For the PROSSER SCHOOL DISTRICT NO. 116 School District for the Month of August, 2019

<u>A. REVENUES</u>	<u>ANNUAL BUDGET</u>	<u>ACTUAL FOR MONTH</u>	<u>ACTUAL FOR YEAR</u>	<u>ENCUMBRANCES</u>	<u>BALANCE</u>	<u>PERCENT</u>
1000 General Student Body	121,236	1,072.18	98,213.43		23,022.57	81.01
2000 Athletics	333,079	1,445.68	191,285.87		141,793.13	57.43
3000 Classes	20,714	-0.31	33,417.56		-12,703.56	161.33
4000 Clubs	402,891	-86.45	199,961.88		202,929.12	49.63
6000 Private Moneys	35,550	0.00	17,369.91		18,180.09	48.86
<b><u>Total REVENUES</u></b>	<b>913,470</b>	<b>2,431.10</b>	<b>540,248.65</b>		<b>373,221.35</b>	<b>59.14</b>
 <u>B. EXPENDITURES</u>						
1000 General Student Body	125,150	5,243.87	84,005.33	0.00	41,144.67	67.12
2000 Athletics	301,616	3,443.70	223,010.23	0.00	78,605.77	73.94
3000 Classes	21,669	842.47	26,491.30	0.00	-4,822.30	122.25
4000 Clubs	402,400	10,027.06	213,731.97	0.00	188,668.03	53.11
6000 Private Moneys	37,849	0.00	17,363.35	0.00	20,485.65	45.88
<b><u>Total EXPENDITURES</u></b>	<b>888,684</b>	<b>19,557.10</b>	<b>564,602.18</b>	<b>0.00</b>	<b>324,081.82</b>	<b>63.53</b>
 <u>C. EXCESS OF REVENUES OVER (UNDER) EXPENDITURES (A-B)</u>	 24,786	 -17,126.00	 -24,353.53		 -49,139.53	 -198.26
 <u>D. TOTAL BEGINNING FUND BALANCE</u>	 329,711		 368,050.39			
 <u>E. G/L 898 PRIOR YEAR ADJUSTMENTS (+OR-)</u>	 XXXXXXXXXX		 0.00			
 <u>F. TOTAL ENDING FUND BALANCE (C+D + OR - E)</u>	 354,497		 343,696.86			
 <u>G. ENDING FUND BALANCE ACCOUNTS:</u>						
G/L 810 Restricted for Other Items	0		0.00			
G/L 819 Restricted for Fund Purposes	354,497		343,696.86			
G/L 840 Nonspnd FB - Invent/Prepd Itms	0		0.00			
G/L 850 Restricted for Uninsured Risks	0		0.00			
G/L 870 Committed to Other Purposes	0		0.00			
G/L 889 Assigned to Fund Purposes	0		0.00			
G/L 890 Unassigned Fund Balance	0		0.00			
 <b><u>TOTAL</u></b>	 <b>354,497</b>		 <b>343,696.86</b>			

**ASB Fund  
Budget vs. Actual  
2018-19**

	Revenues						Expenditures						
	General Student Body	Athletics	Classes	Clubs	Private Moneys	Totals	General Student Body	Athletics	Classes	Clubs	Private Moneys	Totals	
<b>Whitstran</b>	<b>Budget</b>	1,500.00		10,000.00			11,500.00	1,000.00		10,000.00			11,000.00
	<b>Actual</b>	3,220.64	1,714.00	18,509.00			23,443.64	2,484.74	731.65	16,698.44			19,914.83
	<b>Difference</b>	(1,720.64)	(1,714.00)	(8,509.00)			(11,943.64)	(1,484.74)	(731.65)	(6,698.44)			(8,914.83)
<b>KRV</b>	<b>Budget</b>	8,120.00					8,120.00	10,419.00					10,419.00
	<b>Actual</b>	28,092.32					28,092.32	18,493.10					18,493.10
	<b>Difference</b>	(19,972.32)					(19,972.32)	(8,074.10)					(8,074.10)
<b>Heights</b>	<b>Budget</b>	4,266.00			60,000.00	10,000.00	74,266.00	4,000.00		30.00	60,000.00	10,000.00	74,030.00
	<b>Actual</b>	1,856.27			57,448.24	3,704.17	63,008.68	705.04		706.47	59,269.38	3,704.17	64,385.06
	<b>Difference</b>	2,409.73			2,551.76	6,295.83	11,257.32	3,294.96			730.62	6,295.83	9,644.94
<b>HMS</b>	<b>Budget</b>	59,050.00	33,900.00		41,186.00	6,300.00	140,436.00	57,060.00	24,020.00		50,168.00	6,500.00	137,748.00
	<b>Actual</b>	28,505.88	7,526.45		9,721.09	4,644.79	50,398.21	31,733.90	5,738.82		11,905.08	4,279.08	53,656.88
	<b>Difference</b>	30,544.12	26,373.55		31,464.91	1,655.21	90,037.79	25,326.10	18,281.18		38,262.92	2,220.92	84,091.12
<b>PHS</b>	<b>Budget</b>	48,300.00	299,179.00	10,714.00	301,705.00	19,250.00	679,148.00	52,671.00	277,596.00	11,639.00	292,232.00	21,349.00	655,487.00
	<b>Actual</b>	36,538.32	182,045.42	14,908.56	132,792.55	9,020.95	375,305.80	30,588.55	216,539.76	9,086.39	142,557.51	9,380.10	408,152.31
	<b>Difference</b>	11,761.68	117,133.58	(4,194.56)	168,912.45	10,229.05	303,842.20	22,082.45	61,056.24	2,552.61	149,674.49	11,968.90	247,334.69
<b>Totals</b>	<b>Budget</b>	121,236.00	333,079.00	20,714.00	402,891.00	35,550.00	913,470.00	125,150.00	301,616.00	21,669.00	402,400.00	37,849.00	888,684.00
	<b>Actual</b>	98,213.43	191,285.87	33,417.56	199,961.88	17,369.91	540,248.65	84,005.33	223,010.23	26,491.30	213,731.97	17,363.35	564,602.18
	<b>Difference</b>	23,022.57	141,793.13	(12,703.56)	202,929.12	18,180.09	373,221.35	41,144.67	78,605.77	(4,822.30)	188,668.03	20,485.65	324,081.82

16

PROSSER SCHOOL DISTRICT NO. 116

2018-2019 Budget Status Report

90--Transportation Vehicle Fund-- FUND BALANCE -- AGENCY ACCOUNTS -- Revised -- BUDGET-STATUS-REPORT

Fiscal Year 2018 (September 1, 2018 - August 31, 2019)

For the PROSSER SCHOOL DISTRICT NO. 116 School District for the Month of August, 2019

	ANNUAL BUDGET	ACTUAL FOR MONTH	ACTUAL FOR YEAR	ENCUMBRANCES	BALANCE	PERCENT
<b>A. REVENUES/OTHER FIN. SOURCES</b>						
1000 Local Taxes	0	0.00	0.00		0.00	0.00
2000 Local Nontax	3,000	203.75	4,948.28		-1,948.28	164.94
3000 State, General Purpose	0	0.00	0.00		0.00	0.00
4000 State, Special Purpose	351,950	223,600.28	363,600.28		-11,650.28	103.31
5000 Federal, General Purpose	0	0.00	0.00		0.00	0.00
6000 Federal, Special Purpose	0	0.00	0.00		0.00	0.00
8000 Other Agencies and Associates	0	0.00	0.00		0.00	0.00
9000 Other Financing Sources	220,000	0.00	231,002.00		-11,002.00	105.00
<b>A. TOTAL REV/OTHER FIN.SRCS(LESS TRANS)</b>	<b>574,950</b>	<b>223,804.03</b>	<b>599,550.56</b>		<b>-24,600.56</b>	<b>104.28</b>
<b>B. 9900 TRANSFERS IN FROM GF</b>	<b>0</b>	<b>0.00</b>	<b>0.00</b>		<b>0.00</b>	<b>0.00</b>
<b>C. Total REV./OTHER FIN. SOURCES</b>	<b>574,950</b>	<b>223,804.03</b>	<b>599,550.56</b>		<b>-24,600.56</b>	<b>104.28</b>
<b>D. EXPENDITURES</b>						
Type 30 Equipment	550,000	0.00	502,041.52	0.00	47,958.48	91.28
Type 60 Bond Levy Issuance	0	0.00	2,500.00	0.00	-2,500.00	0.00
Type 90 Debt	0	0.00	0.00	0.00	0.00	0.00
<b>Total EXPENDITURES</b>	<b>550,000</b>	<b>0.00</b>	<b>504,541.52</b>	<b>0.00</b>	<b>45,458.48</b>	<b>91.73</b>
<b>E. OTHER FIN. USES TRANS. OUT (GL 536)</b>	<b>134,700</b>	<b>0.00</b>	<b>109,700.00</b>			
<b>F. OTHER FINANCING USES (GL 535)</b>	<b>0</b>	<b>0.00</b>	<b>0.00</b>			
<b>G. EXCESS OF REVENUES/OTHER FIN.SOURCES OVER(UNDER) EXP/OTH FIN USES (A-B-C-D)</b>	<b>-109,750</b>	<b>223,804.03</b>	<b>-14,690.96</b>		<b>95,059.04</b>	<b>-86.61</b>
<b>H. TOTAL BEGINNING FUND BALANCE</b>	<b>349,420</b>		<b>349,440.21</b>			
<b>I. G/L 898 PRIOR YEAR ADJUSTMENTS(+OR-)</b>	<b>XXXXXXXX</b>		<b>0.00</b>			
<b>J. TOTAL ENDING FUND BALANCE (G+H + OR - I)</b>	<b>239,670</b>		<b>334,749.25</b>			
<b>K. ENDING FUND BALANCE ACCOUNTS:</b>						
G/L 810 Restricted For Other Items	0		0.00			
G/L 819 Restricted for Fund Purposes	374,370		334,749.25			
G/L 830 Restricted for Debt Service	0		0.00			
G/L 835 Restrictd For Arbitrage Rebate	0		0.00			
G/L 850 Restricted for Uninsured Risks	0		0.00			
G/L 889 Assigned to Fund Purposes	0		0.00			
G/L 890 Unassigned Fund Balance	-134,700		0.00			
<b>TOTAL</b>	<b>239,670</b>		<b>334,749.25</b>			

## **BOARD PACKET**

**TO:** Board of Directors  
**SUBJECT:** Certificated Personnel  
**AGENDA:** Consent  
**DATE:** November 21, 2019  
**PREPARED BY:** Mr. Matthew Ellis, *Superintendent*

---

---

*Certificated Employees*

---

*There are no recommendations at this time.*

# **BOARD PACKET**

**TO: Board of Directors**  
**SUBJECT: Classified Personnel**  
**AGENDA: Consent**  
**DATE: November 21, 2019**  
**PREPARED BY: Craig Reynolds, *Assistant Superintendent***

## **CLASSIFIED EMPLOYEES**

---

There are no classified recommendations at this time.

## Board Meeting November 13, 2019

---

### REGULAR BOARD MEETING

#### CALL TO ORDER

The regular meeting of the Board of Directors of Prosser School District was called to order at 6:00 p.m. by Mr. Scotty Hunt, President. Other Board members present included Mrs. Jesalyn Cole, Mr. Andy Howe, Mrs. Peggy S. Douglas and Mr. Scott Coleman. Also present were Mr. Matt Ellis, Superintendent; Mrs. Deanna Flores and Mr. Craig Reynolds, Assistant Superintendents; and Mrs. Julie Hyatt, Secretary. Student representatives Martha Akinbade, Rebekah Bestebruer and Cacia Roy were also in attendance. There was also an audience of District staff. Student representative Zane Castilleja was excused from the meeting.

The meeting was held in the Prosser High School library, 1203 Prosser Avenue. Minutes from the October 23, 2019 regular Board meeting and the October 24, 2019 special Board meeting were presented and approved.

#### APPROVAL OF AGENDA:

Motion by Peggy S. Douglas, seconded by Andy Howe and motion carried unanimously to approve the revised agenda. The revision included additional documents added to the Action Items amending current policies.

#### COMMUNICATIONS:

None

#### INFORMATION ITEMS:

##### HMS and PHS Music Program Update

Dan Norris, band and choir teacher at HMS and PHS presented upcoming plans for the music program as well as highlights from the last few years. Mr. Norris is in his third year at Prosser. Student participation in the music program has increased from 117 his first year, to 177 this year. This is largely due to the establishment of a middle school choir program.

Mr. Norris accompanied his presentation with PowerPoint slides. He reviewed many of their performances, which included community events as well as those in our region and state. He also announced several awards and grants which the program has received. During Spring Break 2021, the choir and band students hope to take a trip to southern California, where they will have many opportunities to perform at Disneyland and other venues. Mr. Norris also listed the needs of the program, including additional staffing, uniforms and instrument repair.

The Board members expressed their appreciation to Mr. Norris for all of his hard work in developing and improving the music program in Prosser. They assured him they will do all they can to provide additional support in needed areas.

#### PROTOCOL FOR ADDRESSING BOARD:

Mr. Ellis read the protocol for addressing the Board.

#### HEARING OF VISITORS:

**Angela Skeen** and **Frank Schroeder** – Stadium Walkways (Mrs. Skeen's printed comments are included in the Official Board File)

**René Martinez** – Stadium Walkways



## Board Meeting November 13, 2019

---

After the visitors stated their comments and concerns about the stadium walkways, the Board suggested there be an ADA compliant bathroom placed at the stadium for the playoff football game this weekend. Additionally, it was suggested that it might prove beneficial for Mrs. Skeen and Mrs. Martinez meet with Mr. Ellis about this issue to satisfactorily address the situation.

### REPORTS:

#### Assistant Superintendent's Report – Curriculum and Instruction

- The District has partnered with several other agencies for the Career Fair, which will take place tomorrow. It should be a very informational evening.
- Mrs. Flores distributed an AVID flyer, stating that last year our District had 100% participation of students submitting a FAFSA financial aid application.

#### Assistant Superintendent's Report – Business and Operations

- Mr. Reynolds will provide the Year-End Report to the Board at our next meeting.
- November 15 is the last day for District employees to sign up for SEBB insurance.

#### Superintendent's Report

- Attended the WSSDA Regional Meeting last week in Richland. It was focused on professional development.
- Recently met with Graduation Alliance. Partnering with them will allow us to compete with other districts which offer online schools.
- Our STEM consultant is working with teachers on a science unit regarding splitting DNA.
- Rode the Paterson bus route. We'll go back to the shortest route after snow season.
- Paterson superintendent, Monica Burnett, will meet with Mr. Ellis on Thursday.
- Participated in Downtown Trick or Treat and the Cash Mob. Several of our schools honored veterans at their assemblies.

#### Board Members' Reports

##### Scott Coleman

- Reported on comments about students who don't have adequate clothing, for the inclement weather.

Several suggestions were mentioned to help this problem: Setting up supply closets, partnering with Goodwill, Jubilee Ministries, having a clothing drive.

- Mr. Coleman reported on the tremendous community outreach, not only Prosser, but from Ellensburg and other schools, after his son Jake suffered an injury in a football game in Ellensburg recently. He is also thankful for the excellent medical care his son received.

##### Andy Howe

- No report

##### Jesalyn Cole

- Attended the Veterans' Day parade and thought the band was awesome as were the Veterans' Day assemblies.
- The recent WSSDA Regional Meeting will be beneficial for the Board.
- Census 2020 is coming in the spring. Mrs. Cole is working with several other groups to get a more accurate census reading for maximum funding.
- Thanked the District for participating in the downtown Halloween event.

## Board Meeting November 13, 2019

---

- There will be a meeting on Monday night to start planning for the Spring workday 2020.

### Peggy S. Douglas

- Is really looking forward to the College and Career Fair tomorrow night and has been working with PEDDA on it. Chervenell is sending some of their personnel to the event.
- The WSSDA Regional Meeting was excellent. There are eight sections which will be offered over a school year and when they are in our area, we can take advantage of those trainings.
- The PEDDA board is focusing on capturing as much information as possible for the census coming up in 2020.
- The Chamber dinner is January 27, 2020.

### Martha Akinbade

- A Prevention Summit, sponsored by Thrive, regarding drug and alcohol use among students was held last week. The speakers were amazing.
- Several athletes are going to state in cross country, swim and football.

### Rebekah Bestebreur

- The Drama Club is performing on November 14, 15 and 16.
- Many PHS students participated in Veterans' Day activities.

### Cacia Roy

- Attended the "healthy living\*" meeting today for all sports and club members. There was a good turnout of students.
- \*Mr. Bailey said the meeting was recorded for those students who did not attend today and who will need to make it up.
- Participated in Veterans' Day assembly activities with her leadership class.
- Getting ready for the end of the trimester.
- The next FFA chapter meeting is in two weeks, where they will make wreaths.

### CONSENT ITEMS:

*Motion by Scott Coleman, seconded by Andy Howe and motion carried unanimously to approve the Consent agenda as presented.*

### Certificated Personnel

*There were no recommendations.*

### Classified Personnel

*Kristen Dennis was hired as an office assistant at Prosser Heights Elementary School.*

*Juan Hurtado resigned his position as the head boys' wrestling coach at Prosser High School.*

### Approval of Minutes

*Minutes from the October 23, 2019 regular Board meeting and the October 24, 2019 special Board meeting were presented.*

### Contracts and Personal Service Agreements:

1. Master Schedule Consultants Contract

## Board Meeting November 13, 2019

---

2. HVAC Contract for 2019-22 School Years with Apollo Sheet Metal, Inc.

3. Vouchers

*“The following vouchers as audited and certified by the auditing officers, as required by RCW 42.24.080, and those expense reimbursement claims certified, as required by RCW 42.24.090, are approved for payment.*

*General Fund Voucher numbers 900223 through 900339 totaling \$268,352.28*

*Capital Projects Voucher numbers 200000165 through 200000168 totaling \$491,503.92*

*Debt Service Voucher number 262 totaling \$470.00*

*Associated Student Body Fund Voucher numbers 186538 through 186573 totaling \$36,246.13*

*Transportation Vehicle Fund Voucher number 2012 totaling \$394.96”*

### OLD BUSINESS:

None

### ACTION ITEMS:

#### Out-of-State Travel: Prosser Thrive to CADCA National Leadership Forum

Haley Greene and Meghan Van De Graaf requested permission to attend the CADCA (Community Anti-Drug Coalitions of America) National Leadership Forum, which will take place February 2-7, 2020 at the Gaylord National Resort & Convention Center in National Harbor, Maryland.

HMS Thrive Advisor, Bethany Riddle will accompany chaperones Haley Greene and Erika Wassom as well as four PHS students to the event. The group will fly out of Pasco, WA on Sunday, February 2 and return on Friday, February 7. During the trip, there will be an opportunity for some sightseeing and a trip to Capitol Hill. The Prosser Thrive Coalition provides scholarships to cover the cost of airfare, conference registration, hotel and per diem for meals. The school district covers the cost of the substitute for Bethany Riddle.

Motion by Jesalyn Cole, seconded by Peggy S. Douglas and motion carried unanimously to approve the out-of-state travel request for PHS Thrive students to attend the CADCA National Forum in National Harbor, Maryland.

#### Amend Policy No. 3210: Nondiscrimination – FIRST READING

Policy No. 3210: Nondiscrimination was adopted in October 2001 and was amended in February 2014. In order to comply with current civil rights requirements, Deanna Flores submitted the policy amendment, based on WSSDA’s recommendations. The current policy was also included in the packet, showing the proposed changes with strikethroughs and highlighting.

Motion by Peggy S. Douglas, seconded by Andy Howe and motion carried unanimously to approve the First Reading of the amendment to Policy No. 3210: Nondiscrimination, to comply with current civil right requirements.

#### Amend Policy No. 5010: Nondiscrimination and Affirmative Action – FIRST READING

Policy No. 5010 was updated and amended in February 2014. Since that time, additional changes have been recommended by WSSDA to comply with current civil rights laws. The

## Board Meeting November 13, 2019

---

proposed policy draft was attached. The current policy was also attached, showing the proposed changes with strikethroughs and highlighting.

Motion by Andy Howe, seconded by Jesalyn Cole and motion carried unanimously to approve the First Reading of amendment to Policy No. 5010: Nondiscrimination and Affirmative Action.

Amend Policy No. 5011: Sexual Harassment of District Staff Prohibited – FIRST READING  
Policy No. 5011: Sexual Harassment was adopted in February 2014. Since that time, additional changes have been recommended by WSSDA to comply with current civil rights laws. The proposed policy draft was attached. The current policy was also attached, showing the proposed changes with strikethroughs and highlighting.

Motion by Peggy S. Douglas, seconded by Jesalyn Cole and motion carried unanimously to approve the First Reading of the amendment to Policy No. 5011: Sexual Harassment of District Staff Prohibited, to comply with current civil rights requirements.

### DISCUSSION ITEMS:

#### Student Parking Permits

Mr. Ellis referenced a document contained in the Board packet from security guard Glen Thompson regarding implementing parking permits for the high school.

#### Discussion

There was an attempt to implement parking permits earlier this year, but with a fee attached. There are a lot of complaints from patrons living near the high school of vehicles parked on their property. Mr. Thompson spends a lot of his time running license plates. Having parking permits would allow Mr. Thompson to quickly scan the permit to see who the car belongs to. It would provide for better and quicker monitoring of cars on the campus as well as enabling appropriate consequences. Mr. Ellis said the high school might be able to be the “pilot” for this program and if it is effective it might become a District-wide practice. He also said he hopes we might someday be able to register parents’ vehicles as well for better identification.

If students are parked on city property, it is the responsibility of the Prosser Police Department to investigate that car, not the District’s.

Board members support the program but do not support charging parents another fee.

It would be helpful to send out information to students about why the parking stickers are going to be implemented.

Mr. Bailey said he can send out a notice at the beginning of the next school year. The fee can come out of the building fund if necessary.

#### Long-Range Facilities Planning

##### Discussion

Two documents were distributed - a list of long-range planning items as well as an inventory of property the District owns. Mr. Ellis said he created the list from feedback from staff in the District. He also said he is aware of local citizens brokering deals on behalf of the District.

## Board Meeting November 13, 2019

---

Mr. Ellis suggested forming a small group of people to make recommendations on this issue. Another idea is possibly working with CSG or the Alliance Group, to help with funding sources and to get feedback on the priority of projects. He said we can start budgeting dollars for these projects, including the possibility of land sales revenue. Also, any money left over from the bond and construction as well as Paterson's participation are other potential options.

Mr. Hunt suggested forming a long-range facilities committee soon, to start determining what we need to do next. Members could be those with construction experience and project development. Local builders should also be included and community members would provide a fresh perspective.

Grant writing opportunities are available too as we open our buildings up to community groups.

Scott Coleman is interested in being on the committee.

Mr. Ellis will follow up and report back to the Board.

### Construction Update

Mr. Ellis reported that the cost of the PHS softball field is about \$70,000. He thinks it would be right to offer it to Chervenell and they can select the sub-contractor. He would like the Board to provide feedback on this issue.

Staining on concrete – the test did not turn out as we thought it would. Another consideration for the walls is painting, which will need to be redone more often.

November 18 at 10:00 a.m. is an introductory, “kick-off” Value Engineering meeting. It will be held at 10:00 a.m.

The second Value Engineering Report De-Brief Meeting will be held in the evening, the first week in December. This is where decisions are made and if cuts need to be made, it will be decided that night.

Deanna reported that the crane that loads the walls wasn't working, so they should be putting up our walls on Monday.

Discussion ensued about staining or painting the exterior walls.

Mr. Ellis also announced that blue is being reintroduced in the gym as a secondary school color.

### Safety and Security Update

Mr. Ellis reported that one of the themes of our last meeting was communication. We are going to purchase the kits discussed last year. Yesterday, a threat assessment was done at Whitstran by the Benton County Sheriff's Office. The department is willing to conduct a threat assessment at all of our buildings, but there may be some issues with local law enforcement.

Kevin Gilman said the Sheriff's department distributed a questionnaire which was very beneficial. He'll bring it to the next safety and security meeting. In the next couple of weeks,

**Board Meeting November 13, 2019**

---

Mr. Gilman will receive a full report on the threat assessment exercise. One suggestion the department made was that all exterior doors remain locked at all times, including the front entrance.

Roles of the Board and the Superintendent

Climate

Discussion

Mr. Ellis reviewed several of the items listed under this topic and what we are currently doing in these areas as well as what we hope to implement in the future.

FUTURE MEETINGS:

- Special Board Meeting and Safety and Security Meeting, November 21, 2019, PHS Library, 6:00 p.m.
- Special Board Meeting, Value Engineering for Elementary Schools, First Week in December

Mr. Hunt announced there would be a negotiations update after adjournment tonight.

ADJOURNMENT:

President Hunt adjourned the Board meeting by unanimous consensus at 7:41 p.m.

---

Clerk to the Board

---

Board President

---

Secretary to the Clerk of the Board

The following vouchers, as audited and certified by the Auditing Officer as required by RCW 42.24.080, and those expense reimbursement claims certified as required by RCW 42.24.090, are approved for payment. Those payments have been recorded on this listing which has been made available to the board.

As of November 21, 2019, the board, by a \_\_\_\_\_ vote, approves payments, totaling \$277,605.56. The payments are further identified in this document.

Total by Payment Type for Cash Account, GF WARRANTS PAYABLE:  
Warrant Numbers 900340 through 900454, totaling \$277,605.56

Secretary _____	Board Member _____
Board Member _____	Board Member _____
Board Member _____	Board Member _____

Check Nbr	Vendor Name	Check Date	Check Amount
900340	ACTION AGENDAS	11/27/2019	487.20
900341	ADVANCED BUSINESS CAPITAL, LLC	11/27/2019	3,240.00
900342	AGUAYO, TINA D	11/27/2019	35.50
900343	AIREFCO INC	11/27/2019	1,082.87
900344	ALL AMERICAN PROPANE	11/27/2019	282.99
900345	ALSCO AMERICAN LINEN	11/27/2019	271.75
900346	Vendor Continued Check	11/27/2019	0.00
900347	Vendor Continued Check	11/27/2019	0.00
900348	AMAZON.COM	11/27/2019	4,019.02
900349	AMERICAN TREE TRIMMERS	11/27/2019	488.70
900350	APOLLO	11/27/2019	13,109.11
900351	ATS INLAND NW LLC	11/27/2019	3,735.84
900352	AUTOZONE INC	11/27/2019	52.00
900353	BAKERIES, FRANZ FAMILY	11/27/2019	731.25
900354	BALLARD, GARY	11/27/2019	1,136.70
900355	BANK, U S	11/27/2019	2,026.01
900356	BENDER, ANN C	11/27/2019	205.97
900357	BENTON REA	11/27/2019	3,100.00
900358	BROWN'S TIRE CO	11/27/2019	1,859.22
900359	BRYSON SALES & SERVICE	11/27/2019	1,154.39
900360	BUILDING VISION	11/27/2019	2,789.38
900361	CENGAGE LEARNING	11/27/2019	89.10
900362	CHRISTENSEN, INC	11/27/2019	202.15
900363	CI INFORMATION MANAGEMENT	11/27/2019	235.33
900364	CINTAS CORPORATION	11/27/2019	346.34
900365	CLIFF'S SEPTIC TANK SERVICE	11/27/2019	202.00
900366	COLUMBIA BASIN COLLEGE	11/27/2019	66,454.65
900367	CONTINENTAL ATHLETIC SUPPLY	11/27/2019	1,442.10
900368	CTS LANGUAGE LINK	11/27/2019	81.37
900369	CUMMINS INC	11/27/2019	2,736.78
900370	CURRICULUM ASSOCIATES, LLC	11/27/2019	1,824.48
900371	D & L SUPPLY AND MFG	11/27/2019	845.57
900372	DAVIS PUMPS INC.	11/27/2019	420.81

Check Nbr	Vendor Name	Check Date	Check Amount
900373	DAVY'S TOTAL LAWN CARE SERVICE	11/27/2019	617.89
900374	DENCHEL FORD COUNTRY	11/27/2019	632.00
900375	DEPARTMENT OF RETIREMENT SYST.	11/27/2019	1,339.90
900376	DEROBLES, SANDRA	11/27/2019	38.10
900377	ESD #105	11/27/2019	11,801.24
900378	ESD #123	11/27/2019	24,493.20
900379	FIREFLY COMPUTERS	11/27/2019	232.42
900380	Vendor Continued Check	11/27/2019	0.00
900381	Vendor Continued Check	11/27/2019	0.00
900382	FOOD SERVICES OF AMERICA	11/27/2019	47,608.07
900383	GONZALEZ, DINA	11/27/2019	54.87
900384	GRAINGER	11/27/2019	353.58
900385	GRANDVIEW LUMBER	11/27/2019	7.82
900386	GROENENDALE, KAREN	11/27/2019	56.00
900387	H & H AUTO	11/27/2019	543.79
900388	HALL CHEVROLET BUICK	11/27/2019	336.50
900389	HALL, MICHELLE J	11/27/2019	37.98
900390	Vendor Continued Check	11/27/2019	0.00
900391	COOK'S ACE HARDWARE	11/27/2019	923.21
900392	HENAGER, MELLONY A	11/27/2019	51.04
900393	HOBART SERVICES	11/27/2019	1,127.54
900394	IBS INCORPORATED	11/27/2019	969.86
900395	IMAGINE LEARNING, INC	11/27/2019	2,117.70
900396	IRRIGATION SPECIALISTS INC	11/27/2019	1,838.37
900397	JAMESTOWN NETWORKS	11/27/2019	5,270.24
900398	JIMENEZ, KAREN	11/27/2019	10.32
900399	JOHNSTONE SUPPLY CO	11/27/2019	220.13
900400	JUAREZ, ALEJANDRA MENDEZ	11/27/2019	571.65
900401	JUNIOR LIBRARY GUILD	11/27/2019	27.37
900402	K C D A	11/27/2019	2,607.63
900403	KAPCO BOOK PROTECTION	11/27/2019	313.30
900404	KIRK, LINDA W	11/27/2019	112.05
900405	LANE, CYNTHIA M.	11/27/2019	70.18
900406	LINDEBLAD, KRISTINE	11/27/2019	2,553.88
900407	LINK, CENTURY	11/27/2019	1,349.08
900408	LINK, CENTURY	11/27/2019	33.85
900409	LIONEL ENNS PHD BCBA-D	11/27/2019	5,600.00
900410	LOS VECINOS MEAT MARKET	11/27/2019	45.00
900411	M & M BOLT CO INC	11/27/2019	94.29
900412	M & Q PACKAGING LLC	11/27/2019	629.12
900413	MENKE JACKSON LAW FIRM	11/27/2019	7,076.55
900414	MID-AMERICAN RESEARCH CHEMICAL	11/27/2019	2,017.34
900415	MORROW, DARLENE M.	11/27/2019	17.05
900416	NC MACHINERY	11/27/2019	153.75
900417	NW TEXTBOOK DEPOSITORY CO	11/27/2019	886.48
900418	OFFICE DEPOT INC	11/27/2019	417.68
900419	OSPI - CHILD NUTRITION SERVICE	11/27/2019	1,780.52
900420	OXARC INC	11/27/2019	202.72
900421	PACIFIC OFFICE AUTOMATION	11/27/2019	273.12
900422	PHILLIPS66/CONOCO/76	11/27/2019	52.39



Check Nbr	Vendor Name	Check Date	Check Amount
900423	PLATT ELECTRIC SUPPLY	11/27/2019	1,729.34
900424	PROSSER NAPA	11/27/2019	443.95
900425	PROSSER SCHOOL DIST #116	11/27/2019	35.00
900426	PROSSER FOOD SERVICES	11/27/2019	473.55
900427	PROSSER RENTALS	11/27/2019	314.94
900428	ROSE CITY AWNING CO	11/27/2019	279.06
900429	SALYERS-SMITH, KILA M.	11/27/2019	195.80
900430	SCHOOL DIST #116 REVOLV FUND	11/27/2019	115.00
900431	SCHROEDER, ANIKA	11/27/2019	27.10
900432	SIX ROBBLEES INC	11/27/2019	345.11
900433	SMITH, JOSHUA	11/27/2019	600.00
900434	STATE OF WASHINGTON DEPT OF LI	11/27/2019	26.00
900435	STEMCORE CONSULTING	11/27/2019	3,107.88
900436	SUPER DUPER PUBLICATIONS	11/27/2019	50.50
900437	TERRY'S DAIRY	11/27/2019	8,280.12
900438	THE HOME DEPOT PRO	11/27/2019	11,751.71
900439	TINSLEY, KARLENE	11/27/2019	400.08
900440	TNT SMALL ENGINE REPAIR LLC	11/27/2019	673.32
900441	TONY'S ALBRECHT GLASS INC	11/27/2019	38.01
900442	TRANE U.S. INC	11/27/2019	53.40
900443	USI LAMINATE	11/27/2019	236.66
900444	VALLEY PUBLISHING CO	11/27/2019	96.00
900445	VALLEY WATER SERVICES	11/27/2019	187.50
900446	VINE TECH EQUIPMENT LLC	11/27/2019	10.59
900447	WAL-MART COMMUNITY	11/27/2019	344.99
900448	WALDMAN'S PRODUCE	11/27/2019	3,318.35
900449	WASTE MANAGEMENT OF KENNEWICK	11/27/2019	263.16
900450	WEAVER EXTERMINATING	11/27/2019	788.42
900451	WESTERN PETERBILT - PASCO, WA	11/27/2019	163.41
900452	WHITE, CHELSEA L	11/27/2019	51.23
900453	YAKIMA BINDERY	11/27/2019	363.59
900454	YAKIMA MECHANICAL	11/27/2019	586.44

115 Computer Check(s) For a Total of 277,605.56

Check Nbr	Vendor Name	Check Date	Invoice Number	Invoice Desc	PO Number	Invoice Amount	Check Amount
900340	ACTION AGENDAS	11/27/2019	AA19-0168323		0	487.20	487.20
10 E 530 0100 27 5005 1100 0000 0000 0				General Fund/Expenditures/Basic Education		487.20	
900341	ADVANCED BUSINESS CAPITAL, LLC	11/27/2019	10705		0	920.00	3,240.00
10 E 530 2100 26 7001 0630 0000 0000 0				General Fund/Expenditures/Spec Ed - State		920.00	
			10989		0	1,120.00	
10 E 530 2100 26 7001 0630 0000 0000 0				General Fund/Expenditures/Spec Ed - State		1,120.00	
			11575		0	1,200.00	
10 E 530 2100 26 7001 0630 0000 0000 0				General Fund/Expenditures/Spec Ed - State		1,200.00	
900342	AGUAYO, TINA D	11/27/2019	OCT 2019		0	35.50	35.50
10 E 530 9800 44 8010 0750 0000 0000 0				General Fund/Expenditures/Food Service		35.50	
900343	AIREFCO INC	11/27/2019	4271724		0	593.67	1,082.87
10 E 530 9700 64 5005 0740 0000 0000 0				General Fund/Expenditures/District-Wide Support		593.67	
			4275896		0	489.20	
10 E 530 9700 64 5005 0740 0000 0000 0				General Fund/Expenditures/District-Wide Support		489.20	
900344	ALL AMERICAN PROPANE	11/27/2019	193247	2019/2020 Annual PO for Fuel @ Whitstran	7201900009	282.99	282.99
10 E 530 9700 65 7135 1100 0000 0000 0				General Fund/Expenditures/District-Wide Support		282.99	
900345	ALSCO AMERICAN LINEN	11/27/2019	LSP02232591		0	54.35	271.75
10 E 530 9900 53 7270 0730 0000 0000 0				General Fund/Expenditures/Pupil Transportation		54.35	
			LSP02235003		0	54.35	
10 E 530 9900 53 7270 0730 0000 0000 0				General Fund/Expenditures/Pupil Transportation		54.35	
			LSP02237418		0	54.35	
10 E 530 9900 53 7270 0730 0000 0000 0				General Fund/Expenditures/Pupil Transportation		54.35	
			LSP02239882		0	54.35	
10 E 530 9900 53 7270 0730 0000 0000 0				General Fund/Expenditures/Pupil Transportation		54.35	
			LSP02242330		0	54.35	
10 E 530 9900 53 7270 0730 0000 0000 0				General Fund/Expenditures/Pupil Transportation		54.35	
900346	Vendor Continued Void	11/27/2019					0.00
900347	Vendor Continued Void	11/27/2019					0.00
900348	AMAZON.COM	11/27/2019	444436563595		0	184.60	4,019.02
10 E 530 9800 41 5005 0750 0000 0000 0				General Fund/Expenditures/Food Service		184.60	
			444649386983	SECOND GRADE:SUPPLIES	1201900008	18.75	
10 E 530 0116 27 5005 1200 0000 0000 0				General Fund/Expenditures/2nd Grade		18.75	

Check Nbr	Vendor Name	Check Date	Invoice Number	Invoice Desc	PO Number	Invoice Amount	Check Amount
			449699356855	Batteries for Radios	4501900030	54.17	
10 E 530 0100 27 5005 4500 0000 0000 0				General Fund/Expenditures/Basic Education		54.17	
			449789498635	Keyboard Wrist Rest for student #121662 S.M.	6301900029	16.27	
10 E 530 2100 27 5005 4500 0000 0000 0				General Fund/Expenditures/Spec Ed - State		16.27	
			453334964765	classroom supplies Math Department-E. Tubac	4501900032	21.24	
10 E 530 0100 27 5005 4500 0000 0000 0				General Fund/Expenditures/Basic Education		21.24	
			453368946658	Supplies	7601900087	9.22	
10 E 530 0100 27 5330 1100 0000 0000 0				General Fund/Expenditures/Basic Education		7.85	
10 E 530 2100 32 5070 2400 0000 0000 0				General Fund/Expenditures/Spec Ed - State		0.77	
10 E 530 0100 27 5005 4500 0000 0000 0				General Fund/Expenditures/Basic Education		0.12	
10 E 530 9700 72 5005 0760 0000 0000 0				General Fund/Expenditures/District-Wide Support		0.48	
			454947597883		0	145.50	
10 E 530 3160 27 5005 4500 0000 0000 0				General Fund/Expenditures/Agriculture		145.50	
			458998866996	Printer for Curriculum	7601900082	230.18	
10 E 530 0100 21 5320 0600 0000 0000 0				General Fund/Expenditures/Basic Education		230.18	
			464765534479	Rolling Crates	6301900035	68.09	
10 E 530 2100 27 5005 0630 0000 0000 0				General Fund/Expenditures/Spec Ed - State		68.09	
			464936679393	Rolling Crates	6301900035	40.17	
10 E 530 2100 27 5005 0630 0000 0000 0				General Fund/Expenditures/Spec Ed - State		40.17	
			465679545564	Supplies	7601900084	27.30	
10 E 530 9700 72 5005 0760 0000 0000 0				General Fund/Expenditures/District-Wide Support		27.30	
			465877533588		0	13.56	
10 E 530 0160 27 5005 1300 0000 0000 0				General Fund/Expenditures/Donation Expenditures		13.56	
			467435993345	SECOND GRADE:SUPPLIES	1201900008	151.10	
10 E 530 0116 27 5005 1200 0000 0000 0				General Fund/Expenditures/2nd Grade		151.10	
			468544776698	classroom supplies Math Department-E. Tubac	4501900032	76.62	
10 E 530 0100 27 5005 4500 0000 0000 0				General Fund/Expenditures/Basic Education		76.62	

Check Nbr	Vendor Name	Check Date	Invoice Number	Invoice Desc	PO Number	Invoice Amount	Check Amount
10 E 530 0100 27 5330 1100 0000 0000 0			468887545874	Supplies	7601900087	508.28	
				General Fund/Expenditures/Basic Education		432.82	
10 E 530 2100 32 5070 2400 0000 0000 0				General Fund/Expenditures/Spec Ed - State		42.66	
10 E 530 0100 27 5005 4500 0000 0000 0				General Fund/Expenditures/Basic Education		6.71	
10 E 530 9700 72 5005 0760 0000 0000 0				General Fund/Expenditures/District-Wide Support		26.09	
10 E 530 0100 27 5005 4500 0000 0000 0			477469394664	Classroom Supplies-Math Dept.	4501900041	27.11	
				General Fund/Expenditures/Basic Education		27.11	
10 E 530 0100 27 5005 2400 0000 0000 0			487379345859	Office supplies	2401900039	7.59	
				General Fund/Expenditures/Basic Education		7.59	
10 E 530 6500 27 5005 4500 0000 0000 0			493948599853	Bilingual Supplies for Brittney Stuadenmaier- KRV	6001900065	72.73	
				General Fund/Expenditures/State Trans Bilingual		72.73	
10 E 530 0100 27 5005 2400 0000 0000 0			499986437446	Office supplies	2401900039	58.51	
				General Fund/Expenditures/Basic Education		58.51	
10 E 530 9700 13 5005 0720 0000 0000 0			53645545693		0	28.27	
				General Fund/Expenditures/District-Wide Support		28.27	
10 E 530 9700 72 5005 4500 0000 0000 0			544349354543	PHS Media stick	7601900086	119.45	
				General Fund/Expenditures/District-Wide Support		119.45	
10 E 530 0100 27 5005 2400 0000 0000 0			568463737335	Office supplies	2401900039	78.06	
				General Fund/Expenditures/Basic Education		78.06	
10 E 530 9700 13 5005 0720 0000 0000 0			587447468368		0	50.01	
				General Fund/Expenditures/District-Wide Support		50.01	
10 E 530 0119 27 5005 1100 0000 0000 0			594839433539		0	32.57	
				General Fund/Expenditures/5th Grade		32.57	
10 E 530 0100 27 5005 4500 0000 0000 0			598336846687	classroom supplies Math Department-E. Tubac	4501900032	97.86	
				General Fund/Expenditures/Basic Education		97.86	
10 E 530 0160 27 5005 1300 0000 0000 0			657736779578		0	94.46	
				General Fund/Expenditures/Donation Expenditures		94.46	
10 E 530 0116 27 5005 1200 0000 0000 0			679936987898	SECOND GRADE:SUPPLIES	1201900008	13.53	
				General Fund/Expenditures/2nd Grade		13.53	

Check Nbr	Vendor Name	Check Date	Invoice Number	Invoice Desc	PO Number	Invoice Amount	Check Amount
10 E 530 0100 27 5005 2400 0000 0000 0			684896948469	Task Chair	2401900038	186.79	186.79
				General Fund/Expenditures/Basic Education			
10 E 530 9700 72 5005 0760 0000 0000 0			694874637633	Supplies	7601900081	69.42	69.42
				General Fund/Expenditures/District-Wide Support			
10 E 530 9700 72 5005 0760 0000 0000 0			699586935485	UPS for Stock/ Lamp for PHS (S. Smith)	7601900088	179.18	179.18
				General Fund/Expenditures/District-Wide Support			
10 E 530 0100 27 5005 2400 0000 0000 0			779886553936	office supplies	2401900036	7.59	7.59
				General Fund/Expenditures/Basic Education			
10 E 530 0160 27 5005 1300 0000 0000 0			787639735549		0	54.29	54.29
				General Fund/Expenditures/Donation Expenditures			
10 E 530 0160 27 5005 1300 0000 0000 0			794555354567		0	89.66	89.66
				General Fund/Expenditures/Donation Expenditures			
10 E 530 0113 27 5005 1200 0000 0000 0			796383945898	Tech: headphones	1201900003	237.83	237.83
				General Fund/Expenditures/Computer/Technology			
10 E 530 9700 72 5005 0760 0000 0000 0			833344358857	UPS for Stock/ Lamp for PHS (S. Smith)	7601900088	107.00	107.00
				General Fund/Expenditures/District-Wide Support			
10 E 530 0152 31 5005 1300 0000 0000 0			847568534366	Professional Development for Heights Elementary	1301900020	606.18	606.18
				General Fund/Expenditures/Staff Dev Bldg Allocation			
10 E 530 9700 72 5005 0760 0000 0000 0			859587734375	Supplies	7601900084	6.51	6.51
				General Fund/Expenditures/District-Wide Support			
10 E 530 2100 27 5005 2400 0000 0000 0			8834794647397	Student Supplies - Student #135135 E.A.	6301900027	12.84	12.84
				General Fund/Expenditures/Spec Ed - State			
10 E 530 9700 72 5005 0760 0000 0000 0			898855667639	Supplies	7601900081	30.38	30.38
				General Fund/Expenditures/District-Wide Support			
10 E 530 0100 27 5005 2400 0000 0000 0			955545383485	Office supplies	2401900039	11.61	11.61
				General Fund/Expenditures/Basic Education			
10 E 530 9700 72 5005 0760 0000 0000 0			958447547767	Supplies	7601900081	151.92	151.92
				General Fund/Expenditures/District-Wide Support			

Check Nbr	Vendor Name	Check Date	Invoice Number	Invoice Desc	PO Number	Invoice Amount	Check Amount
			964998758538	Speech Supplies - Heights Elementary	6301900028	22.62	
10 E 530 2100 27 5005 1300 0000 0000 0				General Fund/Expenditures/Spec Ed - State		22.62	
900349	AMERICAN TREE TRIMMERS	11/27/2019	228		0	488.70	488.70
10 E 530 9700 64 7001 2400 0000 0000 0				General Fund/Expenditures/District-Wide Support		488.70	
900350	APOLLO	11/27/2019	19090600		0	11,767.90	13,109.11
10 E 530 9700 64 7001 4500 0000 0000 0				General Fund/Expenditures/District-Wide Support		11,767.90	
			940025037	Monthly Maintenance Fee	7401900002	1,341.21	
10 E 530 9700 64 7180 4500 0000 0000 0				General Fund/Expenditures/District-Wide Support		1,341.21	
900351	ATS INLAND NW LLC	11/27/2019	10/25/2019	Support Service Program as described in the Contract. 5 year term beginning Nov. 1, 2018.	7401900001	3,735.84	3,735.84
10 E 530 9700 64 7001 0740 0000 0000 0				General Fund/Expenditures/District-Wide Support		3,735.84	
900352	AUTOZONE INC	11/27/2019	1174997581		0	52.00	52.00
10 E 530 9700 64 5005 0740 0000 0000 0				General Fund/Expenditures/District-Wide Support		52.00	
900353	BAKERIES, FRANZ FAMILY	11/27/2019	29011429406		0	422.85	731.25
10 E 530 9800 42 5420 0750 0000 0000 0				General Fund/Expenditures/Food Service		422.85	
			29011430406		0	109.00	
10 E 530 9800 42 5420 0750 0000 0000 0				General Fund/Expenditures/Food Service		109.00	
			29011430807		0	199.40	
10 E 530 9800 42 5420 0750 0000 0000 0				General Fund/Expenditures/Food Service		199.40	
900354	BALLARD, GARY	11/27/2019	2019-18		0	542.70	1,136.70
10 E 530 9800 42 5440 0750 0000 0000 0				General Fund/Expenditures/Food Service		542.70	
			2019-19		0	594.00	
10 E 530 9800 42 5440 0750 0000 0000 0				General Fund/Expenditures/Food Service		594.00	
900355	BANK, U S	11/27/2019	CRAIG		0	2,026.01	2,026.01
10 E 530 0100 27 5030 1300 0000 0000 0				General Fund/Expenditures/Basic Education		32.57	
10 E 530 2100 21 8030 0630 0000 0000 0				General Fund/Expenditures/Spec Ed - State		1,074.70	
10 E 530 9700 64 5005 0740 0000 0000 0				General Fund/Expenditures/District-Wide Support		778.66	
10 E 530 0100 28 7001 4500 0000 0000 0				General Fund/Expenditures/Basic Education		10.85	
10 E 530 9700 13 7035 0720 0000 0000 0				General Fund/Expenditures/District-Wide Support		129.23	
900356	BENDER, ANN C	11/27/2019	SEPT - NOV 2019		0	205.97	205.97
10 E 530 9700 13 7001 0720 0000 0000 0				General Fund/Expenditures/District-Wide Support		205.97	

Check Nbr	Vendor Name	Check Date	Invoice Number	Invoice Desc	PO Number	Invoice Amount	Check Amount
900357	BENTON REA	11/27/2019	108906		0	3,100.00	3,100.00
10 E 530 9700 72 7080 0760 0000 0000 0				General Fund/Expenditures/District-Wide Support		3,100.00	
900358	BROWN'S TIRE CO	11/27/2019	31700416495		0	113.19	1,859.22
10 E 530 9900 53 5950 0730 0000 0000 0				General Fund/Expenditures/Pupil Transportation		113.19	
			74300184186		0	153.12	
10 E 530 9700 62 5950 0740 0000 0000 0				General Fund/Expenditures/District-Wide Support		153.12	
			74300184233		0	507.82	
10 E 530 9900 53 5950 0730 0000 0000 0				General Fund/Expenditures/Pupil Transportation		507.82	
			74300185714		0	1,085.09	
10 E 530 9900 53 5950 0730 0000 0000 0				General Fund/Expenditures/Pupil Transportation		1,085.09	
900359	BRYSON SALES & SERVICE	11/27/2019	1573		0	155.33	1,154.39
10 E 530 9900 53 5005 0730 0000 0000 0				General Fund/Expenditures/Pupil Transportation		155.33	
			1619		0	710.43	
10 E 530 9900 53 5005 0730 0000 0000 0				General Fund/Expenditures/Pupil Transportation		710.43	
			1645		0	75.40	
10 E 530 9900 53 5005 0730 0000 0000 0				General Fund/Expenditures/Pupil Transportation		75.40	
			1656		0	158.82	
10 E 530 9900 53 5005 0730 0000 0000 0				General Fund/Expenditures/Pupil Transportation		158.82	
			1700		0	92.03	
10 E 530 9900 53 5005 0730 0000 0000 0				General Fund/Expenditures/Pupil Transportation		92.03	
			1701		0	156.00	
10 E 530 9900 53 5005 0730 0000 0000 0				General Fund/Expenditures/Pupil Transportation		156.00	
			1702		0	91.77	
10 E 530 9900 53 5005 0730 0000 0000 0				General Fund/Expenditures/Pupil Transportation		91.77	
			30673		0	-285.39	
10 E 530 9900 53 5005 0730 0000 0000 0				General Fund/Expenditures/Pupil Transportation		-285.39	
900360	BUILDING VISION	11/27/2019	139		0	2,789.38	2,789.38
10 E 530 2100 26 7001 0630 0000 0000 0				General Fund/Expenditures/Spec Ed - State		2,789.38	
900361	CENGAGE LEARNING	11/27/2019	NO. 68849600	College in the High School Teacher Materials 2019-2020 - French Class	6001900068	89.10	89.10
10 E 530 0187 27 5070 4500 0000 0000 0				General Fund/Expenditures/Text Adoption		89.10	
900362	CHRISTENSEN, INC	11/27/2019	0032191-IN		0	202.15	202.15

Check Nbr	Vendor Name	Check Date	Invoice Number	Invoice Desc	PO Number	Invoice Amount	Check Amount
10 E 530 9900 53 5950 0730 0000 0000 0				General Fund/Expenditures/Pupil Transportation		202.15	
900363 CI	INFORMATION MANAGEMENT	11/27/2019	0087556	Annual PO for CI Shred services at Special Service Office	6301900007	24.62	235.33
10 E 530 2100 21 5005 0630 0000 0000 0				General Fund/Expenditures/Spec Ed - State		24.62	
			0087557	Annual P.O.	6001900037	34.62	
10 E 530 0100 21 7001 0600 0000 0000 0				General Fund/Expenditures/Basic Education		14.00	
10 E 530 5320 24 7001 0600 0000 0000 0				General Fund/Expenditures/Migrant Ed		14.00	
10 E 530 9730 72 7001 0760 0000 0000 0				General Fund/Expenditures/Tech Coordinator - Office		6.62	
			0087561	Shredding Services 19-20 School Year	1301900007	49.24	
10 E 530 0100 27 7001 1300 0000 0000 0				General Fund/Expenditures/Basic Education		49.24	
			0090387	Annual PO for CI Shred services at Special Service Office	6301900007	25.37	
10 E 530 2100 21 5005 0630 0000 0000 0				General Fund/Expenditures/Spec Ed - State		25.37	
			0090388	Annual P.O.	6001900037	50.74	
10 E 530 0100 21 7001 0600 0000 0000 0				General Fund/Expenditures/Basic Education		20.53	
10 E 530 5320 24 7001 0600 0000 0000 0				General Fund/Expenditures/Migrant Ed		20.53	
10 E 530 9730 72 7001 0760 0000 0000 0				General Fund/Expenditures/Tech Coordinator - Office		9.68	
			0090393	Shredding Services 19-20 School Year	1301900007	50.74	
10 E 530 0100 27 7001 1300 0000 0000 0				General Fund/Expenditures/Basic Education		50.74	
900364 CINTAS CORPORATION		11/27/2019	5014964256		0	40.49	346.34
10 E 530 9800 44 5005 1300 0000 0000 0				General Fund/Expenditures/Food Service		40.49	
			5014964257		0	52.31	
10 E 530 9800 44 5005 2400 0000 0000 0				General Fund/Expenditures/Food Service		52.31	
			5014964260		0	69.03	
10 E 530 9800 44 5005 1200 0000 0000 0				General Fund/Expenditures/Food Service		69.03	
			5015122383		0	48.98	
10 E 530 9700 64 5005 0740 0000 0000 0				General Fund/Expenditures/District-Wide Support		48.98	
			5015122384		0	91.04	
10 E 530 9900 52 5005 0730 0000 0000 0				General Fund/Expenditures/Pupil Transportation		91.04	
			5015122385		0	44.49	



Check Nbr	Vendor Name	Check Date	Invoice Number	Invoice Desc	PO Number	Invoice Amount	Check Amount
10 E 530 9800 44 5005 1200 0000 0000 0				General Fund/Expenditures/Food Service		44.49	
900365	CLIFF'S SEPTIC TANK SERVICE	11/27/2019	181844		0	202.00	202.00
10 E 530 9700 64 7001 0740 0000 0000 0				General Fund/Expenditures/District-Wide Support		202.00	
900366	COLUMBIA BASIN COLLEGE	11/27/2019	OCT 2019 RUNNING		0	66,454.65	66,454.65
10 E 530 0179 27 7001 0720 0000 0000 0				General Fund/Expenditures/Running Start		61,013.78	
10 E 530 3151 27 7065 4500 0000 0000 0				General Fund/Expenditures/Voc Director		5,440.87	
900367	CONTINENTAL ATHLETIC SUPPLY	11/27/2019	0096183-IN		0	1,442.10	1,442.10
10 E 530 0100 28 7010 0720 0000 0000 0				General Fund/Expenditures/Basic Education		1,442.10	
900368	CTS LANGUAGE LINK	11/27/2019	155114		0	81.37	81.37
10 E 530 0100 21 7120 0600 0000 0000 0				General Fund/Expenditures/Basic Education		81.37	
900369	CUMMINS INC	11/27/2019	13-10060		0	935.32	2,736.78
10 E 530 9900 53 5005 0730 0000 0000 0				General Fund/Expenditures/Pupil Transportation		935.32	
			13-8848		0	84.89	
10 E 530 9900 53 5005 0730 0000 0000 0				General Fund/Expenditures/Pupil Transportation		84.89	
			13-8852		0	812.34	
10 E 530 9900 53 5005 0730 0000 0000 0				General Fund/Expenditures/Pupil Transportation		812.34	
			13-8888		0	-181.80	
10 E 530 9900 53 5005 0730 0000 0000 0				General Fund/Expenditures/Pupil Transportation		-181.80	
			13-9254		0	407.67	
10 E 530 9900 53 5005 0730 0000 0000 0				General Fund/Expenditures/Pupil Transportation		407.67	
			13-9604		0	109.87	
10 E 530 9900 53 5005 0730 0000 0000 0				General Fund/Expenditures/Pupil Transportation		109.87	
			X5-36951		0	568.49	
10 E 530 9900 53 5005 0730 0000 0000 0				General Fund/Expenditures/Pupil Transportation		568.49	
900370	CURRICULUM ASSOCIATES, LLC	11/27/2019	90616622	i-Ready Reading Online Instruction for 70 Students at Housel Middle School	6001900054	1,824.48	1,824.48
10 E 530 0187 27 5030 2400 0000 0000 0				General Fund/Expenditures/Text Adoption		1,824.48	
900371	D & L SUPPLY AND MFG	11/27/2019	357872		0	347.51	845.57
10 E 530 9700 64 5005 0740 0000 0000 0				General Fund/Expenditures/District-Wide Support		347.51	
			358031		0	182.22	
10 E 530 9700 64 5005 0740 0000 0000 0				General Fund/Expenditures/District-Wide Support		182.22	

Check Nbr	Vendor Name	Check Date	Invoice Number	Invoice Desc	PO Number	Invoice Amount	Check Amount
			358051		0	32.96	
10 E 530 9700 64 5005 0740 0000 0000 0			General Fund/Expenditures/District-Wide Support			32.96	
			358199		0	48.82	
10 E 530 9700 64 5005 0740 0000 0000 0			General Fund/Expenditures/District-Wide Support			48.82	
			358272		0	60.35	
10 E 530 9700 64 5005 0740 0000 0000 0			General Fund/Expenditures/District-Wide Support			60.35	
			358465		0	173.71	
10 E 530 9700 64 5005 0740 0000 0000 0			General Fund/Expenditures/District-Wide Support			173.71	
900372 DAVIS PUMPS INC.		11/27/2019	70269		0	140.27	420.81
10 E 530 9700 64 5005 0740 0000 0000 0			General Fund/Expenditures/District-Wide Support			140.27	
			70278		0	280.54	
10 E 530 9700 64 5005 0740 0000 0000 0			General Fund/Expenditures/District-Wide Support			280.54	
900373 DAVY'S TOTAL LAWN CARE SERVICE		11/27/2019	5255		0	617.89	617.89
10 E 530 9700 64 7001 0740 0000 0000 0			General Fund/Expenditures/District-Wide Support			617.89	
900374 DENCHEL FORD COUNTRY		11/27/2019	SE1055813	Rental of Drivers	4501900012	316.00	632.00
				Ed. car			
10 E 530 7100 27 7001 4500 0000 0000 0			General Fund/Expenditures/Traffic Safety			316.00	
			SE1057115	Rental of Drivers	4501900012	316.00	
				Ed. car			
10 E 530 7100 27 7001 4500 0000 0000 0			General Fund/Expenditures/Traffic Safety			316.00	
900375 DEPARTMENT OF RETIREMENT SYST.		11/27/2019	01366651		0	1,339.90	1,339.90
10 E 530 0100 27 4232 4500 0000 0000 0			General Fund/Expenditures/Basic Education			1,339.90	
900376 DEROBLES, SANDRA		11/27/2019	BOWLS		0	38.10	38.10
10 E 530 9800 44 5005 0750 0000 0000 0			General Fund/Expenditures/Food Service			38.10	
900377 ESD #105		11/27/2019	0000059663		0	9,601.24	11,801.24
10 E 530 9700 72 7076 0760 0000 0000 0			General Fund/Expenditures/District-Wide Support			9,601.24	
			SESSION 124685		0	2,200.00	
10 E 530 9700 12 7001 0710 0000 0000 0			General Fund/Expenditures/District-Wide Support			2,200.00	
900378 ESD #123		11/27/2019	0002029246		0	12,175.10	24,493.20
10 E 530 2200 27 7001 0630 0000 0000 0			General Fund/Expenditures/Spec Ed Infants & Toddlers			12,175.10	
			0002029247		0	12,175.10	
10 E 530 2200 27 7001 0630 0000 0000 0			General Fund/Expenditures/Spec Ed Infants & Toddlers			12,175.10	
			0002029268	2019 - 2020 Drug and Alcohol testing for bus	7301900008	65.00	

Check Nbr	Vendor Name	Check Date	Invoice Number	Invoice Desc	PO Number	Invoice Amount	Check Amount
10 E 530 9900 52 7185 0730 0000 0000 0				drivers General Fund/Expenditures/Pupil Transportation		65.00	
			0002029275	2019-2020 open PO for finger printing	7201900011	78.00	
10 E 530 9700 14 7185 0720 0000 0000 0				General Fund/Expenditures/District-Wide Support		78.00	
900379	FIREFLY COMPUTERS	11/27/2019	I000171226	Chromebook for SPED	7601900090	232.42	232.42
10 E 530 2100 32 5310 4500 0000 0000 0				General Fund/Expenditures/Spec Ed - State		232.42	
900380	Vendor Continued Void	11/27/2019					0.00
900381	Vendor Continued Void	11/27/2019					0.00
900382	FOOD SERVICES OF AMERICA	11/27/2019	9636434		0	277.17	47,608.07
10 E 530 9800 42 5440 0750 0000 0000 0				General Fund/Expenditures/Food Service		277.17	
			9636436		0	63.03	
10 E 530 9800 44 5005 0750 0000 0000 0				General Fund/Expenditures/Food Service		63.03	
			9636438		0	1,111.24	
10 E 530 9800 42 5430 0750 0000 0000 0				General Fund/Expenditures/Food Service		1,111.24	
			9636441		0	1,136.65	
10 E 530 9800 42 5440 0750 0000 0000 0				General Fund/Expenditures/Food Service		1,136.65	
			9636444		0	68.91	
10 E 530 9800 44 5005 0750 0000 0000 0				General Fund/Expenditures/Food Service		68.91	
			9640463		0	304.07	
10 E 530 9800 44 5005 0750 0000 0000 0				General Fund/Expenditures/Food Service		304.07	
			9640464		0	549.37	
10 E 530 9800 42 5440 0750 0000 0000 0				General Fund/Expenditures/Food Service		549.37	
			9640466		0	216.45	
10 E 530 9800 42 5440 0750 0000 0000 0				General Fund/Expenditures/Food Service		216.45	
			9640467		0	16.66	
10 E 530 9800 42 5440 0750 0000 0000 0				General Fund/Expenditures/Food Service		16.66	
			9640469		0	66.75	
10 E 530 9800 42 5430 0750 0000 0000 0				General Fund/Expenditures/Food Service		66.75	
			9640471		0	141.75	
10 E 530 9800 42 5440 0750 0000 0000 0				General Fund/Expenditures/Food Service		141.75	
			9640472		0	551.60	
10 E 530 9800 44 5005 0750 0000 0000 0				General Fund/Expenditures/Food Service		551.60	

Check Nbr	Vendor Name	Check Date	Invoice Number	Invoice Desc	PO Number	Invoice Amount	Check Amount
10 E 530 9800 42 5430 0750 0000 0000 0			9640473	General Fund/Expenditures/Food Service	0	5,267.47	5,267.47
10 E 530 9800 42 5430 0750 0000 0000 0			9640474	General Fund/Expenditures/Food Service	0	1,466.62	1,466.62
10 E 530 9800 42 5430 0750 0000 0000 0			9640475	General Fund/Expenditures/Food Service	0	56.21	56.21
10 E 530 9800 42 5430 0750 0000 0000 0			9644449	General Fund/Expenditures/Food Service	0	333.57	333.57
10 E 530 9800 42 5440 0750 0000 0000 0			9644450	General Fund/Expenditures/Food Service	0	458.10	458.10
10 E 530 9800 44 5005 0750 0000 0000 0			9644451	General Fund/Expenditures/Food Service	0	68.91	68.91
10 E 530 9800 42 5430 0750 0000 0000 0			9648445	General Fund/Expenditures/Food Service	0	5,909.37	5,909.37
10 E 530 9800 42 5430 0750 0000 0000 0			9648448	General Fund/Expenditures/Food Service	0	1,382.68	1,382.68
10 E 530 9800 42 5440 0750 0000 0000 0			9648450	General Fund/Expenditures/Food Service	0	2,103.25	2,103.25
10 E 530 9897 42 5430 0750 0000 0000 0			9648452	General Fund/Expenditures/Food Services-Catering	0	55.16	55.16
10 E 530 9800 42 5430 0750 0000 0000 0			9648453	General Fund/Expenditures/Food Service	0	111.91	111.91
10 E 530 9800 42 5430 0750 0000 0000 0			9648455	General Fund/Expenditures/Food Service	0	269.31	269.31
10 E 530 9800 42 5440 0750 0000 0000 0			9648456	General Fund/Expenditures/Food Service	0	32.21	32.21
10 E 530 9800 44 5005 0750 0000 0000 0			9648457	General Fund/Expenditures/Food Service	0	187.69	187.69
10 E 530 9897 42 5430 0750 0000 0000 0			9648458	General Fund/Expenditures/Food Services-Catering	0	84.44	84.44
10 E 530 9800 42 5430 0750 0000 0000 0			9648460	General Fund/Expenditures/Food Service	0	254.16	254.16
10 E 530 9800 42 5430 0750 0000 0000 0			9648461	General Fund/Expenditures/Food Service	0	622.00	622.00

Check Nbr	Vendor Name	Check Date	Invoice Number	Invoice Desc	PO Number	Invoice Amount	Check Amount
10 E 530 9800 42 5430 0750 0000 0000 0			9648463	General Fund/Expenditures/Food Service	0	441.40	441.40
10 E 530 9800 42 5430 0750 0000 0000 0			9652328	General Fund/Expenditures/Food Service	0	679.91	679.91
10 E 530 9800 42 5430 0750 0000 0000 0			9652329	General Fund/Expenditures/Food Service	0	45.18	45.18
10 E 530 9800 44 5005 0750 0000 0000 0			9652330	General Fund/Expenditures/Food Service	0	253.73	253.73
10 E 530 9800 42 5430 0750 0000 0000 0			9652331	General Fund/Expenditures/Food Service	0	159.90	159.90
10 E 530 9800 42 5440 0750 0000 0000 0			9656229	General Fund/Expenditures/Food Service	0	3,943.04	3,943.04
10 E 530 9800 42 5430 0750 0000 0000 0			9656232	General Fund/Expenditures/Food Service	0	1,250.88	1,250.88
10 E 530 9800 42 5430 0750 0000 0000 0			9656234	General Fund/Expenditures/Food Service	0	1,095.61	1,095.61
10 E 530 9800 44 5005 0750 0000 0000 0			9656235	General Fund/Expenditures/Food Service	0	1,540.33	1,540.33
10 E 530 9800 42 5430 0750 0000 0000 0			9656237	General Fund/Expenditures/Food Service	0	982.23	982.23
10 E 530 9800 42 5440 0750 0000 0000 0			9656239	General Fund/Expenditures/Food Service	0	228.42	228.42
10 E 530 9800 42 5430 0750 0000 0000 0			9656242	General Fund/Expenditures/Food Service	0	1,469.39	1,469.39
10 E 530 9800 42 5430 0750 0000 0000 0			9656243	General Fund/Expenditures/Food Service	0	18.21	18.21
10 E 530 9800 42 5440 0750 0000 0000 0			9656244	General Fund/Expenditures/Food Service	0	65.70	65.70
10 E 530 9800 42 5430 0750 0000 0000 0			9656245	General Fund/Expenditures/Food Service	0	636.46	636.46
10 E 530 9800 42 5430 0750 0000 0000 0			9656247	General Fund/Expenditures/Food Service	0	1,313.12	1,313.12
10 E 530 9800 42 5430 0750 0000 0000 0			9656248	General Fund/Expenditures/Food Service	0	78.04	78.04

Check Nbr	Vendor Name	Check Date	Invoice Number	Invoice Desc	PO Number	Invoice Amount	Check Amount
10 E 530 9800 42 5440 0750 0000 0000 0			9656250	General Fund/Expenditures/Food Service	0	850.50	850.50
10 E 530 9800 42 5430 0750 0000 0000 0			9659911	General Fund/Expenditures/Food Service	0	774.50	774.50
10 E 530 9897 42 5430 0750 0000 0000 0			9659912	General Fund/Expenditures/Food Services-Catering	0	885.06	885.06
10 E 530 9800 42 5430 0750 0000 0000 0			9661179	General Fund/Expenditures/Food Service	0	-19.12	-19.12
10 E 530 9800 42 5430 0750 0000 0000 0			9663933	General Fund/Expenditures/Food Service	0	2,256.54	2,256.54
10 E 530 9800 42 5430 0750 0000 0000 0			9663934	General Fund/Expenditures/Food Service	0	24.74	24.74
10 E 530 9800 42 5430 0750 0000 0000 0			9663935	General Fund/Expenditures/Food Service	0	2,940.16	2,940.16
10 E 530 9800 44 5005 0750 0000 0000 0			9663936	General Fund/Expenditures/Food Service	0	1,002.41	1,002.41
10 E 530 9800 42 5440 0750 0000 0000 0			9663937	General Fund/Expenditures/Food Service	0	1,909.64	1,909.64
10 E 530 9800 42 5430 0750 0000 0000 0			9663938	General Fund/Expenditures/Food Service	0	325.52	325.52
10 E 530 9800 42 5430 0750 0000 0000 0			9663939	General Fund/Expenditures/Food Service	0	856.48	856.48
10 E 530 9800 42 5430 0750 0000 0000 0			9663940	General Fund/Expenditures/Food Service	0	464.76	464.76
10 E 530 9800 42 5430 0750 0000 0000 0			9663941	General Fund/Expenditures/Food Service	0	65.95	65.95
10 E 530 9800 42 5440 0750 0000 0000 0			9663942	General Fund/Expenditures/Food Service	0	56.70	56.70
10 E 530 9800 42 5430 0750 0000 0000 0			9665097	General Fund/Expenditures/Food Service	0	-1,172.13	-1,172.13
10 E 530 9800 42 5430 0750 0000 0000 0			9665098	General Fund/Expenditures/Food Service	0	-1,016.08	-1,016.08
10 E 530 9800 42 5430 0750 0000 0000 0			9665099	General Fund/Expenditures/Food Service	0	-1,596.90	-1,596.90

Check Nbr	Vendor Name	Check Date	Invoice Number	Invoice Desc	PO Number	Invoice Amount	Check Amount
			9665100		0	-117.79	
10 E 530 9800 42 5430 0750 0000 0000 0			General Fund/Expenditures/Food Service			-117.79	
			9665101		0	-113.20	
10 E 530 9800 42 5430 0750 0000 0000 0			General Fund/Expenditures/Food Service			-113.20	
			9666267		0	1,862.07	
10 E 530 9800 42 5430 0750 0000 0000 0			General Fund/Expenditures/Food Service			1,862.07	
900383 GONZALEZ, DINA		11/27/2019	AUG 2019 TRAVEL		0	6.38	54.87
10 E 530 0100 23 8010 0720 0000 0000 0			General Fund/Expenditures/Basic Education			6.38	
			OCT. 2019		0	25.52	
10 E 530 0100 23 8010 0720 0000 0000 0			General Fund/Expenditures/Basic Education			25.52	
			SEPT. 2019		0	22.97	
10 E 530 0100 23 8010 0720 0000 0000 0			General Fund/Expenditures/Basic Education			22.97	
900384 GRAINGER		11/27/2019	9338772024		0	153.18	353.58
10 E 530 9700 64 5005 4500 0000 0000 0			General Fund/Expenditures/District-Wide Support			153.18	
			9342441814		0	188.20	
10 E 530 9700 64 5005 4500 0000 0000 0			General Fund/Expenditures/District-Wide Support			188.20	
			9344437596		0	12.20	
10 E 530 9700 64 5005 4500 0000 0000 0			General Fund/Expenditures/District-Wide Support			12.20	
900385 GRANDVIEW LUMBER		11/27/2019	196013		0	22.65	7.82
10 E 530 9700 64 5005 0740 0000 0000 0			General Fund/Expenditures/District-Wide Support			22.65	
			k96015		0	-14.83	
10 E 530 9700 64 5005 0740 0000 0000 0			General Fund/Expenditures/District-Wide Support			-14.83	
900386 GROENENDALE, KAREN		11/27/2019	FCS FALL 2019		0	56.00	56.00
10 E 530 3165 27 8030 4500 0000 0000 0			General Fund/Expenditures/Home/Family			56.00	
900387 H & H AUTO		11/27/2019	S0064841		0	543.79	543.79
10 E 530 9700 64 5005 0740 0000 0000 0			General Fund/Expenditures/District-Wide Support			543.79	
900388 HALL CHEVROLET BUICK		11/27/2019	5026566		0	14.06	336.50
10 E 530 9700 75 5005 0730 0000 0000 0			General Fund/Expenditures/District-Wide Support			14.06	
			5026582		0	322.44	
10 E 530 9700 75 5005 0730 0000 0000 0			General Fund/Expenditures/District-Wide Support			322.44	
900389 HALL, MICHELLE J		11/27/2019	BEAN BAG CHAIR		0	37.98	37.98
10 E 530 0100 27 5005 4500 0000 0000 0			General Fund/Expenditures/Basic Education			37.98	
900390 Vendor Continued Void		11/27/2019					0.00
900391 COOK'S ACE HARDWARE		11/27/2019	A511445		0	24.28	923.21

Check Nbr	Vendor Name	Check Date	Invoice Number	Invoice Desc	PO Number	Invoice Amount	Check Amount
10 E 530 9700 63 5005 0740 0000 0000 0				General Fund/Expenditures/District-Wide Support		24.28	
			A512408		0	14.10	
10 E 530 9900 53 5005 0730 0000 0000 0				General Fund/Expenditures/Pupil Transportation		14.10	
			A5128487		0	37.99	
10 E 530 9700 63 5005 0740 0000 0000 0				General Fund/Expenditures/District-Wide Support		37.99	
			A512851		0	9.76	
10 E 530 9700 64 5005 0740 0000 0000 0				General Fund/Expenditures/District-Wide Support		9.76	
			A513014		0	32.53	
10 E 530 9700 64 5005 0740 0000 0000 0				General Fund/Expenditures/District-Wide Support		32.53	
			A513076		0	9.10	
10 E 530 9700 63 5005 0740 0000 0000 0				General Fund/Expenditures/District-Wide Support		9.10	
			A513113		0	5.42	
10 E 530 9700 63 5005 0740 0000 0000 0				General Fund/Expenditures/District-Wide Support		5.42	
			A513195		0	16.49	
10 E 530 9700 64 5005 0740 0000 0000 0				General Fund/Expenditures/District-Wide Support		16.49	
			A513254		0	0.49	
10 E 530 9900 53 5005 0730 0000 0000 0				General Fund/Expenditures/Pupil Transportation		0.49	
			A513752		0	11.91	
10 E 530 9800 44 5005 0750 0000 0000 0				General Fund/Expenditures/Food Service		11.91	
			A513818		0	32.57	
10 E 530 9700 64 5005 0740 0000 0000 0				General Fund/Expenditures/District-Wide Support		32.57	
			A513990		0	21.71	
10 E 530 9700 64 5005 0740 0000 0000 0				General Fund/Expenditures/District-Wide Support		21.71	
			A514072		0	4.98	
10 E 530 9900 53 5005 0730 0000 0000 0				General Fund/Expenditures/Pupil Transportation		4.98	
			A514097		0	49.49	
10 E 530 9700 64 5005 0740 0000 0000 0				General Fund/Expenditures/District-Wide Support		49.49	
			A514122		0	27.14	
10 E 530 9900 53 5005 0730 0000 0000 0				General Fund/Expenditures/Pupil Transportation		27.14	
			A514567		0	15.59	
10 E 530 9900 53 5005 0730 0000 0000 0				General Fund/Expenditures/Pupil Transportation		15.59	
			A514587		0	1.93	
10 E 530 9700 64 5005 0740 0000 0000 0				General Fund/Expenditures/District-Wide Support		1.93	



Check Nbr	Vendor Name	Check Date	Invoice Number	Invoice Desc	PO Number	Invoice Amount	Check Amount
10 E 530 9900 53 5005 0730 0000 0000 0			A514832	General Fund/Expenditures/Pupil Transportation	0	6.07	6.07
10 E 530 9700 64 5005 0740 0000 0000 0			A514873	General Fund/Expenditures/District-Wide Support	0	6.48	6.48
10 E 530 9700 64 5005 0740 0000 0000 0			A514917	General Fund/Expenditures/District-Wide Support	0	10.49	10.49
10 E 530 9700 64 5005 0740 0000 0000 0			A514918	General Fund/Expenditures/District-Wide Support	0	4.76	4.76
10 E 530 9700 62 5005 0740 0000 0000 0			A514919	General Fund/Expenditures/District-Wide Support	0	18.45	18.45
10 E 530 9700 64 5005 0740 0000 0000 0			A514943	General Fund/Expenditures/District-Wide Support	0	23.87	23.87
10 E 530 9700 64 5005 0740 0000 0000 0			A515578	General Fund/Expenditures/District-Wide Support	0	10.41	10.41
10 E 530 9700 64 5005 0740 0000 0000 0			A515671	General Fund/Expenditures/District-Wide Support	0	4.50	4.50
10 E 530 9700 63 5005 0740 0000 0000 0			A515673	General Fund/Expenditures/District-Wide Support	0	6.06	6.06
10 E 530 9700 64 5005 0740 0000 0000 0			A515679	General Fund/Expenditures/District-Wide Support	0	39.07	39.07
10 E 530 9700 63 5005 0740 0000 0000 0			A515819	General Fund/Expenditures/District-Wide Support	0	8.24	8.24
10 E 530 9700 64 5005 0740 0000 0000 0			B389538	General Fund/Expenditures/District-Wide Support	0	1.73	1.73
10 E 530 9700 64 5005 0740 0000 0000 0			B390635	General Fund/Expenditures/District-Wide Support	0	18.45	18.45
10 E 530 9700 64 5005 0740 0000 0000 0			B390636	General Fund/Expenditures/District-Wide Support	0	57.25	57.25
10 E 530 9700 64 5005 0740 0000 0000 0			B390642	General Fund/Expenditures/District-Wide Support	0	8.47	8.47
10 E 530 9700 64 5005 0740 0000 0000 0			B391054	General Fund/Expenditures/District-Wide Support	0	19.54	19.54
10 E 530 9700 62 5005 0740 0000 0000 0			B391063	General Fund/Expenditures/District-Wide Support	0	22.98	22.98

Check Nbr	Vendor Name	Check Date	Invoice Number	Invoice Desc	PO Number	Invoice Amount	Check Amount
10 E 530 9700 64 5005 0740 0000 0000 0			B391180	General Fund/Expenditures/District-Wide Support	0	10.85	10.85
10 E 530 9700 63 5005 0740 0000 0000 0			B391209	General Fund/Expenditures/District-Wide Support	0	13.02	13.02
10 E 530 9900 53 5005 0730 0000 0000 0			B391223	General Fund/Expenditures/Pupil Transportation	0	3.82	3.82
10 E 530 9700 64 5005 0740 0000 0000 0			B391528	General Fund/Expenditures/District-Wide Support	0	34.23	34.23
10 E 530 9700 63 5005 0740 0000 0000 0			B391733	General Fund/Expenditures/District-Wide Support	0	13.02	13.02
10 E 530 9700 62 5005 0740 0000 0000 0			B391902	General Fund/Expenditures/District-Wide Support	0	12.14	12.14
10 E 530 9700 62 5005 0740 0000 0000 0			B392196	General Fund/Expenditures/District-Wide Support	0	52.10	52.10
10 E 530 9700 64 5005 0740 0000 0000 0			B392207	General Fund/Expenditures/District-Wide Support	0	15.16	15.16
10 E 530 9700 64 5005 0740 0000 0000 0			B392290	General Fund/Expenditures/District-Wide Support	0	89.00	89.00
10 E 530 9700 64 5005 0740 0000 0000 0			B392337	General Fund/Expenditures/District-Wide Support	0	6.49	6.49
10 E 530 9800 44 5005 0750 0000 0000 0			B392478	General Fund/Expenditures/Food Service	0	8.23	8.23
10 E 530 9700 62 5005 0740 0000 0000 0			B392844	General Fund/Expenditures/District-Wide Support	0	4.32	4.32
10 E 530 9700 64 5005 0740 0000 0000 0			B392904	General Fund/Expenditures/District-Wide Support	0	7.59	7.59
10 E 530 9700 64 5005 0740 0000 0000 0			B393059	General Fund/Expenditures/District-Wide Support	0	4.98	4.98
10 E 530 3160 27 5005 4500 0000 0000 0			B393115	Open PO for CTE Supplies	4561900002	47.30	11.83
10 E 530 3161 27 5005 4500 0000 0000 0				General Fund/Expenditures/Agriculture			11.83
10 E 530 3165 27 5005 4500 0000 0000 0				General Fund/Expenditures/Business			11.83
10 E 530 3167 27 5005 4500 0000 0000 0				General Fund/Expenditures/Home/Family			11.81
			B393254		0	18.66	

Check Nbr	Vendor Name	Check Date	Invoice Number	Invoice Desc	PO Number	Invoice Amount	Check Amount
10 E 530 9700 64 5005 0740 0000 0000 0				General Fund/Expenditures/District-Wide Support		18.66	
900392	HENAGER, MELLONY A	11/27/2019	OCT. 2019		0	51.04	51.04
10 E 530 0100 26 8010 0640 0000 0000 0				General Fund/Expenditures/Basic Education		51.04	
900393	HOBART SERVICES	11/27/2019	34257846		0	1,127.54	1,127.54
10 E 530 9800 44 7001 0750 0000 0000 0				General Fund/Expenditures/Food Service		1,127.54	
900394	IBS INCORPORATED	11/27/2019	713023-1		0	827.20	969.86
10 E 530 9900 53 5005 0730 0000 0000 0				General Fund/Expenditures/Pupil Transportation		827.20	
			713023-2		0	10.86	
10 E 530 9900 53 5005 0730 0000 0000 0				General Fund/Expenditures/Pupil Transportation		10.86	
			715064-1		0	131.80	
10 E 530 9900 53 5005 0730 0000 0000 0				General Fund/Expenditures/Pupil Transportation		131.80	
900395	IMAGINE LEARNING, INC	11/27/2019	INV40683	Imagine Espanol Student Licenses for Whitstran Dual Language Classroom - J Perez	6001900055	2,117.70	2,117.70
10 E 530 5100 27 5030 1100 0000 0000 0				General Fund/Expenditures/Title I Part A		2,117.70	
900396	IRRIGATION SPECIALISTS INC	11/27/2019	3228879-01		0	1,808.19	1,838.37
10 E 530 9700 62 5005 0740 0000 0000 0				General Fund/Expenditures/District-Wide Support		1,808.19	
			3229298-01		0	30.18	
10 E 530 9700 62 5005 0740 0000 0000 0				General Fund/Expenditures/District-Wide Support		30.18	
900397	JAMESTOWN NETWORKS	11/27/2019	5651		0	5,270.24	5,270.24
10 E 530 9731 72 7084 0760 0000 0000 0				General Fund/Expenditures/Erate		5,270.24	
900398	JIMENEZ, KAREN	11/27/2019	BOOKS		0	10.32	10.32
10 E 530 0100 22 5005 1300 0000 0000 0				General Fund/Expenditures/Basic Education		10.32	
900399	JOHNSTONE SUPPLY CO	11/27/2019	20415515-00		0	220.13	220.13
10 E 530 9700 64 5005 0740 0000 0000 0				General Fund/Expenditures/District-Wide Support		220.13	
900400	JUAREZ, ALEJANDRA MENDEZ	11/27/2019	OCTOBER 2019		0	571.65	571.65
10 E 530 2100 21 8030 0630 0000 0000 0				General Fund/Expenditures/Spec Ed - State		571.65	
900401	JUNIOR LIBRARY GUILD	11/27/2019	487035	LIBRARY	1201900016	27.37	27.37
10 E 530 0100 22 5005 1200 0000 0000 0				General Fund/Expenditures/Basic Education		27.37	
900402	K C D A	11/27/2019	300446912	Washington State Flags	1301900026	71.18	2,607.63
10 E 530 0100 23 5005 1300 0000 0000 0				General Fund/Expenditures/Basic Education		71.18	

Check Nbr	Vendor Name	Check Date	Invoice Number	Invoice Desc	PO Number	Invoice Amount	Check Amount
10 E 530 0153 27 5005 2400 0000 0000 0			300448577	AVID Supplies	2401900037	404.06	
				General Fund/Expenditures/AVID Staff Dev			404.06
10 E 530 0100 27 5005 2400 0000 0000 0			300448578	School supplies	2401900044	1,371.35	
				General Fund/Expenditures/Basic Education			1,371.35
10 E 530 0100 27 5005 2400 0000 0000 0			300448579	Railroad board	2401900047	395.37	
				General Fund/Expenditures/Basic Education			395.37
10 E 530 3160 27 5005 4500 0000 0000 0			300448681	Open PO for CTE Supplies	4561900001	365.67	
				General Fund/Expenditures/Agriculture			91.42
10 E 530 3161 27 5005 4500 0000 0000 0				General Fund/Expenditures/Business			91.42
10 E 530 3165 27 5005 4500 0000 0000 0				General Fund/Expenditures/Home/Family			91.42
10 E 530 3167 27 5005 4500 0000 0000 0				General Fund/Expenditures/Technology Education			91.41
900403	KAPCO BOOK PROTECTION	11/27/2019	1390297	Book Covers for Library	1301900025	313.30	313.30
10 E 530 0100 22 5060 1300 0000 0000 0				General Fund/Expenditures/Basic Education			340.24
10 L 601 0000 00 0000 0000 0000 0000				General Fund/Accounts Payable			-26.94
900404	KIRK, LINDA W	11/27/2019	OCT 2019		0	59.16	112.05
10 E 530 0100 26 8010 0640 0000 0000 0				General Fund/Expenditures/Basic Education			59.16
10 E 530 0100 26 5005 0640 0000 0000 0				SUPPLIES 11/4/2019	0	52.89	
				General Fund/Expenditures/Basic Education			52.89
900405	LANE, CYNTHIA M.	11/27/2019	OCT. 2019		0	70.18	70.18
10 E 530 2100 26 8010 0630 0000 0000 0				General Fund/Expenditures/Spec Ed - State			70.18
900406	LINDEBLAD, KRISTINE	11/27/2019	OCT. 23-24, 2019		0	2,553.88	2,553.88
10 E 530 0187 31 7001 0600 0000 0000 0				General Fund/Expenditures/Text Adoption			2,553.88
900407	LINK, CENTURY	11/27/2019	NOVEMBER 2019		0	1,349.08	1,349.08
10 E 530 9700 65 7118 0750 0000 0000 0				General Fund/Expenditures/District-Wide Support			62.38
10 E 530 9700 65 7118 0730 0000 0000 0				General Fund/Expenditures/District-Wide Support			59.41
10 E 530 9700 65 7118 1300 0000 0000 0				General Fund/Expenditures/District-Wide Support			66.99
10 E 530 9700 65 7118 4500 0000 0000 0				General Fund/Expenditures/District-Wide Support			64.08
10 E 530 9700 65 7118 0730 0000 0000 0				General Fund/Expenditures/District-Wide Support			65.83
10 E 530 9700 65 7118 2400 0000 0000 0				General Fund/Expenditures/District-Wide Support			0.00
10 E 530 9700 65 7118 2400 0000 0000 0				General Fund/Expenditures/District-Wide Support			62.38
10 E 530 9700 65 7118 0740 0000 0000 0				General Fund/Expenditures/District-Wide Support			0.00
10 E 530 9700 65 7118 0720 0000 0000 0				General Fund/Expenditures/District-Wide Support			192.24
10 E 530 9700 65 7118 1200 0000 0000 0				General Fund/Expenditures/District-Wide Support			124.76
10 E 530 9700 65 7118 0760 0000 0000 0				General Fund/Expenditures/District-Wide Support			32.04
10 E 530 9700 65 7118 0600 0000 0000 0				General Fund/Expenditures/District-Wide Support			32.04
10 E 530 9700 65 7118 4500 0000 0000 0				General Fund/Expenditures/District-Wide Support			266.43
10 E 530 9700 65 7118 1300 0000 0000 0				General Fund/Expenditures/District-Wide Support			62.38
10 E 530 9700 65 7118 1000 0000 0000 0				General Fund/Expenditures/District-Wide Support			131.66
10 E 530 9700 65 7118 0630 0000 0000 0				General Fund/Expenditures/District-Wide Support			64.08

Check Nbr	Vendor Name	Check Date	Invoice Number	Invoice Desc	PO Number	Invoice Amount	Check Amount
10 E 530 9700 65 7118 1200 0000 0000 0				General Fund/Expenditures/District-Wide Support		0.00	
10 E 530 9700 65 7118 2400 0000 0000 0				General Fund/Expenditures/District-Wide Support		62.38	
10 E 530 9700 65 7118 1100 0000 0000 0				General Fund/Expenditures/District-Wide Support		0.00	
900408	LINK, CENTURY	11/27/2019	320497728 11/02/2019		0	33.85	33.85
10 E 530 9700 65 7118 0720 0000 0000 0				General Fund/Expenditures/District-Wide Support		33.85	
900409	LIONEL ENNS PHD BCBA-D	11/27/2019	1331		0	1,175.00	5,600.00
10 E 530 2100 26 7001 0630 0000 0000 0				General Fund/Expenditures/Spec Ed - State		1,175.00	
			1332		0	4,425.00	
10 E 530 2100 26 7001 0630 0000 0000 0				General Fund/Expenditures/Spec Ed - State		4,425.00	
900410	LOS VECINOS MEAT MARKET	11/27/2019	11/4/2019		3069	45.00	45.00
10 E 530 5320 24 5005 0600 0000 0000 0				General Fund/Expenditures/Migrant Ed		45.00	
900411	M & M BOLT CO INC	11/27/2019	350767		0	94.29	94.29
10 E 530 9700 64 5005 0740 0000 0000 0				General Fund/Expenditures/District-Wide Support		94.29	
900412	M & Q PACKAGING LLC	11/27/2019	213188		0	629.12	629.12
10 E 530 9800 44 5005 0750 0000 0000 0				General Fund/Expenditures/Food Service		629.12	
900413	MENKE JACKSON LAW FIRM	11/27/2019	405 10/31/2019		0	6,922.40	7,076.55
10 E 530 9700 12 7030 0710 0000 0000 0				General Fund/Expenditures/District-Wide Support		6,922.40	
			409 10/31/2019		0	154.15	
10 E 530 9700 12 7030 0710 0000 0000 0				General Fund/Expenditures/District-Wide Support		154.15	
900414	MID-AMERICAN RESEARCH CHEMICAL	11/27/2019	0677842-IN		0	106.17	2,017.34
10 E 530 9900 53 5005 0730 0000 0000 0				General Fund/Expenditures/Pupil Transportation		106.17	
			0677843-IN		0	665.34	
10 E 530 9700 63 5005 0740 0000 0000 0				General Fund/Expenditures/District-Wide Support		665.34	
			0679901-IN		0	1,245.83	
10 E 530 9700 63 5005 0740 0000 0000 0				General Fund/Expenditures/District-Wide Support		1,245.83	
900415	MORROW, DARLENE M.	11/27/2019	VET. DAY SOUP		0	17.05	17.05
10 E 530 9800 42 5430 0750 0000 0000 0				General Fund/Expenditures/Food Service		17.05	
900416	NC MACHINERY	11/27/2019	YKCS0386796		0	13.29	153.75
10 E 530 9900 53 5005 0730 0000 0000 0				General Fund/Expenditures/Pupil Transportation		13.29	
			YKCS0386851		0	140.46	
10 E 530 9900 53 5005 0730 0000 0000 0				General Fund/Expenditures/Pupil Transportation		140.46	
900417	NW TEXTBOOK DEPOSITORY CO	11/27/2019	114-293-370	Words Their Way 3rd Grade Biliteracy Start Up - PHE	6001900015	161.42	886.48

Check Nbr	Vendor Name	Check Date	Invoice Number	Invoice Desc	PO Number	Invoice Amount	Check Amount
10 E 530 0149 27 5005 1300 0000 0000 0				General Fund/Expenditures/Start-Up		161.42	
			114-299-929	Ready Math Curriculum Materials for Math Resource Room at PHS	6001900075	725.06	
10 E 530 0187 27 5005 4500 0000 0000 0				General Fund/Expenditures/Text Adoption		725.06	
900418	OFFICE DEPOT INC	11/27/2019	397908827001	SECOND GRADE: SUPPLIES	1201900010	71.76	417.68
10 E 530 0116 27 5005 1200 0000 0000 0				General Fund/Expenditures/2nd Grade		71.76	
			397908828001	SECOND GRADE: SUPPLIES	1201900010	2.66	
10 E 530 0116 27 5005 1200 0000 0000 0				General Fund/Expenditures/2nd Grade		2.66	
			398573720001	Copy paper for Curriculum/Technology/Migrant	6001900073	227.99	
10 E 530 0100 21 5005 0600 0000 0000 0				General Fund/Expenditures/Basic Education		76.00	
10 E 530 5320 24 5005 0600 0000 0000 0				General Fund/Expenditures/Migrant Ed		76.00	
10 E 530 9730 72 5005 0760 0000 0000 0				General Fund/Expenditures/Tech Coordinator - Office		75.99	
			398573789001	Mechanical pencils for para PD training and office supplies for the curriculum office	6001900074	115.27	
10 E 530 0100 21 5005 0600 0000 0000 0				General Fund/Expenditures/Basic Education		80.56	
10 E 530 0148 31 5005 0600 0000 0000 0				General Fund/Expenditures/Para Certification		34.71	
900419	OSPI - CHILD NUTRITION SERVICE	11/27/2019	25644		0	1,780.52	1,780.52
10 E 530 9800 42 7001 0750 0000 0000 0				General Fund/Expenditures/Food Service		1,780.52	
900420	OXARC INC	11/27/2019	30813392	Open PO for Metal Shop Supplies	4561900003	202.72	202.72
10 E 530 3160 27 5005 4500 0000 0000 0				General Fund/Expenditures/Agriculture		202.72	
900421	PACIFIC OFFICE AUTOMATION	11/27/2019	245598	OFFICE: SUPPLIES	1201900009	73.85	273.12
10 E 530 0100 27 5005 1200 0000 0000 0				General Fund/Expenditures/Basic Education		73.85	
			264847	OFFICE: SUPPLIES	1201900011	137.92	
10 E 530 0100 27 5005 1200 0000 0000 0				General Fund/Expenditures/Basic Education		137.92	
			373575		0	61.35	
10 E 530 9700 12 7290 0710 0000 0000 0				General Fund/Expenditures/District-Wide Support		61.35	
900422	PHILLIPS66/CONOCO/76	11/27/2019	11/8/2019		0	52.39	52.39

Check Nbr	Vendor Name	Check Date	Invoice Number	Invoice Desc	PO Number	Invoice Amount	Check Amount
10 E 530 9700 75 5900 0730 0000 0000 0				General Fund/Expenditures/District-Wide Support		52.39	
900423	PLATT ELECTRIC SUPPLY	11/27/2019	X306606		0	230.37	1,729.34
10 E 530 9700 64 5810 0740 0000 0000 0				General Fund/Expenditures/District-Wide Support		230.37	
			X319756		0	439.29	
10 E 530 9700 64 5810 0740 0000 0000 0				General Fund/Expenditures/District-Wide Support		439.29	
			X400065		0	83.09	
10 E 530 9700 64 5810 0740 0000 0000 0				General Fund/Expenditures/District-Wide Support		83.09	
			X403544		0	34.75	
10 E 530 9700 64 5810 0740 0000 0000 0				General Fund/Expenditures/District-Wide Support		34.75	
			X558458		0	452.50	
10 E 530 9700 64 5810 0740 0000 0000 0				General Fund/Expenditures/District-Wide Support		452.50	
			Y192402		0	489.34	
10 E 530 9700 64 5810 0740 0000 0000 0				General Fund/Expenditures/District-Wide Support		489.34	
900424	PROSSER NAPA	11/27/2019	508345		0	59.36	443.95
10 E 530 9900 53 5005 0730 0000 0000 0				General Fund/Expenditures/Pupil Transportation		59.36	
			510539		0	-157.46	
10 E 530 9900 53 5005 0730 0000 0000 0				General Fund/Expenditures/Pupil Transportation		-157.46	
			510962		0	13.38	
10 E 530 9900 53 5005 0730 0000 0000 0				General Fund/Expenditures/Pupil Transportation		13.38	
			511011		0	13.03	
10 E 530 9900 53 5005 0730 0000 0000 0				General Fund/Expenditures/Pupil Transportation		13.03	
			511053		0	17.81	
10 E 530 9900 53 5005 0730 0000 0000 0				General Fund/Expenditures/Pupil Transportation		17.81	
			511172		0	55.56	
10 E 530 9900 53 5005 0730 0000 0000 0				General Fund/Expenditures/Pupil Transportation		55.56	
			511182		0	4.63	
10 E 530 9900 53 5005 0730 0000 0000 0				General Fund/Expenditures/Pupil Transportation		4.63	
			511183		0	6.47	
10 E 530 9900 53 5005 0730 0000 0000 0				General Fund/Expenditures/Pupil Transportation		6.47	
			511187		0	3.15	
10 E 530 9900 53 5005 0730 0000 0000 0				General Fund/Expenditures/Pupil Transportation		3.15	
			511359		0	32.47	
10 E 530 9900 53 5005 0730 0000 0000 0				General Fund/Expenditures/Pupil Transportation		32.47	

Check Nbr	Vendor Name	Check Date	Invoice Number	Invoice Desc	PO Number	Invoice Amount	Check Amount
			511438		0	45.92	
10 E 530 9900 53 5005 0730 0000 0000 0			General Fund/Expenditures/Pupil Transportation			45.92	
			511720		0	116.28	
10 E 530 9900 53 5005 0730 0000 0000 0			General Fund/Expenditures/Pupil Transportation			116.28	
			511893		0	162.75	
10 E 530 9900 53 5005 0730 0000 0000 0			General Fund/Expenditures/Pupil Transportation			162.75	
			511918		0	13.60	
10 E 530 9900 53 5005 0730 0000 0000 0			General Fund/Expenditures/Pupil Transportation			13.60	
			511975		0	30.41	
10 E 530 9900 53 5005 0730 0000 0000 0			General Fund/Expenditures/Pupil Transportation			30.41	
			511984		0	16.45	
10 E 530 9900 53 5005 0730 0000 0000 0			General Fund/Expenditures/Pupil Transportation			16.45	
			512042		0	10.14	
10 E 530 9700 64 5005 0740 0000 0000 0			General Fund/Expenditures/District-Wide Support			10.14	
900425	PROSSER SCHOOL DIST #116	11/27/2019	2019-0004	TECHNOLOGY POSTERS	0	35.00	35.00
10 E 530 5101 27 5005 4500 0000 0000 0			General Fund/Expenditures/Title I -Parent Inv.			35.00	
900426	PROSSER FOOD SERVICES	11/27/2019	376		0	166.68	473.55
10 E 530 0100 24 5005 4500 0000 0000 0			General Fund/Expenditures/Basic Education			166.68	
			380	BUILDING	1201900012	6.87	
10 E 530 0100 27 5005 1200 0000 0000 0			General Fund/Expenditures/Basic Education			6.87	
			382		0	300.00	
10 E 530 5320 24 5005 0600 0000 0000 0			General Fund/Expenditures/Migrant Ed			300.00	
900427	PROSSER RENTALS	11/27/2019	15555		0	314.94	314.94
10 E 530 9700 62 5005 0740 0000 0000 0			General Fund/Expenditures/District-Wide Support			314.94	
900428	ROSE CITY AWNING CO	11/27/2019	1004715		0	279.06	279.06
10 E 530 9700 64 5005 0740 0000 0000 0			General Fund/Expenditures/District-Wide Support			279.06	
900429	SALYERS-SMITH, KILA M.	11/27/2019	LEAVENWORTH		0	195.80	195.80
10 E 530 0187 31 8030 4500 0000 0000 0			General Fund/Expenditures/Text Adoption			195.80	
900430	SCHOOL DIST #116 REVOLV FUND	11/27/2019	4727		0	115.00	115.00
10 E 530 0100 27 5005 4500 0000 0000 0			General Fund/Expenditures/Basic Education			115.00	
900431	SCHROEDER, ANIKA	11/27/2019	FRESHMAN LUNCH		0	27.10	27.10
10 E 530 0188 27 5005 4500 0000 0000 0			General Fund/Expenditures/PBIS Incentives			27.10	
900432	SIX ROBBLEES INC	11/27/2019	3-698925		0	143.35	345.11
10 E 530 9900 53 5005 0730 0000 0000 0			General Fund/Expenditures/Pupil Transportation			143.35	



Check Nbr	Vendor Name	Check Date	Invoice Number	Invoice Desc	PO Number	Invoice Amount	Check Amount
10 E 530 9900 53 5005 0730 0000 0000 0			3-700655	General Fund/Expenditures/Pupil Transportation	0	109.12	109.12
10 E 530 9900 53 5005 0730 0000 0000 0			3-700680	General Fund/Expenditures/Pupil Transportation	0	92.64	92.64
900433 SMITH, JOSHUA		11/27/2019 10/23/2019			0	600.00	600.00
10 E 530 9900 52 7001 0730 0000 0000 0				General Fund/Expenditures/Pupil Transportation		600.00	
900434 STATE OF WASHINGTON DEPT OF LI		11/27/2019 L0084438218			0	26.00	26.00
10 E 530 9900 52 7001 0730 0000 0000 0				General Fund/Expenditures/Pupil Transportation		26.00	
900435 STEMCORE CONSULTING		11/27/2019 003			0	3,107.88	3,107.88
10 E 530 9700 12 7001 0710 0000 0000 0				General Fund/Expenditures/District-Wide Support		3,107.88	
900436 SUPER DUPER PUBLICATIONS		11/27/2019 2480371A		Speech Test Protocols	6301900032	50.50	50.50
10 E 530 2100 27 5005 0630 0000 0000 0				General Fund/Expenditures/Spec Ed - State		50.50	
900437 TERRY'S DAIRY		11/27/2019 396051			0	98.23	8,280.12
10 E 530 9800 42 5410 0750 0000 0000 0				General Fund/Expenditures/Food Service		98.23	
10 E 530 9800 42 5410 0750 0000 0000 0			396347	General Fund/Expenditures/Food Service	0	130.85	130.85
10 E 530 9800 42 5410 0750 0000 0000 0			396676	General Fund/Expenditures/Food Service	0	338.18	338.18
10 E 530 9800 42 5410 0750 0000 0000 0			397043	General Fund/Expenditures/Food Service	0	109.10	109.10
10 E 530 9800 42 5410 0750 0000 0000 0			397048	General Fund/Expenditures/Food Service	0	370.98	370.98
10 E 530 9800 42 5410 0750 0000 0000 0			397961	General Fund/Expenditures/Food Service	0	348.88	348.88
10 E 530 9800 42 5410 0750 0000 0000 0			398489	General Fund/Expenditures/Food Service	0	130.85	130.85
10 E 530 9800 42 5410 0750 0000 0000 0			398499	General Fund/Expenditures/Food Service	0	796.15	796.15
10 E 530 9800 42 5410 0750 0000 0000 0			399630	General Fund/Expenditures/Food Service	0	174.53	174.53
10 E 530 9800 42 5410 0750 0000 0000 0			399881	General Fund/Expenditures/Food Service	0	130.85	130.85
10 E 530 9800 42 5410 0750 0000 0000 0			399883	General Fund/Expenditures/Food Service	0	666.48	666.48

Check Nbr	Vendor Name	Check Date	Invoice Number	Invoice Desc	PO Number	Invoice Amount	Check Amount
10 E 530 9800 42 5410 0750 0000 0000 0				General Fund/Expenditures/Food Service		666.48	
			400376		0	305.20	
10 E 530 9800 42 5410 0750 0000 0000 0				General Fund/Expenditures/Food Service		305.20	
			400801		0	130.85	
10 E 530 9800 42 5410 0750 0000 0000 0				General Fund/Expenditures/Food Service		130.85	
			400803a		0	1,066.71	
10 E 530 9800 42 5410 0750 0000 0000 0				General Fund/Expenditures/Food Service		1,066.71	
			401423		0	174.35	
10 E 530 9800 42 5410 0750 0000 0000 0				General Fund/Expenditures/Food Service		174.35	
			401630		0	130.85	
10 E 530 9800 42 5410 0750 0000 0000 0				General Fund/Expenditures/Food Service		130.85	
			401632a		0	349.23	
10 E 530 9800 42 5410 0750 0000 0000 0				General Fund/Expenditures/Food Service		349.23	
			402115		0	349.05	
10 E 530 9800 42 5410 0750 0000 0000 0				General Fund/Expenditures/Food Service		349.05	
			402694		0	133.03	
10 E 530 9800 42 5410 0750 0000 0000 0				General Fund/Expenditures/Food Service		133.03	
			402700		0	966.93	
10 E 530 9800 42 5410 0750 0000 0000 0				General Fund/Expenditures/Food Service		966.93	
			403196		0	211.27	
10 E 530 9800 42 5410 0750 0000 0000 0				General Fund/Expenditures/Food Service		211.27	
			403480		0	133.26	
10 E 530 9800 42 5410 0750 0000 0000 0				General Fund/Expenditures/Food Service		133.26	
			403785		0	522.98	
10 E 530 9800 42 5410 0750 0000 0000 0				General Fund/Expenditures/Food Service		522.98	
			404458		0	511.33	
10 E 530 9800 42 5410 0750 0000 0000 0				General Fund/Expenditures/Food Service		511.33	
900438	THE HOME DEPOT PRO	11/27/2019	510755564		0	3,718.51	11,751.71
10 E 530 9700 63 5005 0740 0000 0000 0				General Fund/Expenditures/District-Wide Support		3,718.51	
			513400762		0	714.61	
10 E 530 9700 63 5005 0740 0000 0000 0				General Fund/Expenditures/District-Wide Support		714.61	
			513939157		0	-1,050.64	
10 E 530 9700 63 5005 0740 0000 0000 0				General Fund/Expenditures/District-Wide Support		-1,050.64	

Check Nbr	Vendor Name	Check Date	Invoice Number	Invoice Desc	PO Number	Invoice Amount	Check Amount
10 E 530 9700 63 5005 0740 0000 0000 0			513939165	General Fund/Expenditures/District-Wide Support	0	940.15	940.15
10 E 530 9700 63 5005 0740 0000 0000 0			514250984	General Fund/Expenditures/District-Wide Support	0	343.13	343.13
10 E 530 9700 63 5005 0740 0000 0000 0			514250992	General Fund/Expenditures/District-Wide Support	0	256.34	256.34
10 E 530 9700 63 5005 0740 0000 0000 0			514251008	General Fund/Expenditures/District-Wide Support	0	2,251.82	2,251.82
10 E 530 9700 63 5005 0740 0000 0000 0			516853447	General Fund/Expenditures/District-Wide Support	0	17.51	17.51
10 E 530 9700 63 5005 0740 0000 0000 0			517798112	General Fund/Expenditures/District-Wide Support	0	1,011.93	1,011.93
10 E 530 9700 63 5005 0740 0000 0000 0			518955836	General Fund/Expenditures/District-Wide Support	0	1,656.22	1,656.22
10 E 530 9700 63 5005 0740 0000 0000 0			519653786	General Fund/Expenditures/District-Wide Support	0	33.75	33.75
10 E 530 9700 63 5005 0740 0000 0000 0			520087552	General Fund/Expenditures/District-Wide Support	0	1,858.38	1,858.38
900439	TINSLEY, KARLENE	11/27/2019	BOOKS 10/31/2019		0	291.97	400.08
10 E 530 0100 22 5005 4500 0000 0000 0			General Fund/Expenditures/Basic Education			291.97	
10 E 530 0100 22 5005 4500 0000 0000 0			tissue	General Fund/Expenditures/Basic Education	0	108.11	108.11
900440	TNT SMALL ENGINE REPAIR LLC	11/27/2019	2191306		0	673.32	673.32
10 E 530 9700 62 7001 0740 0000 0000 0			General Fund/Expenditures/District-Wide Support			673.32	
900441	TONY'S ALBRECHT GLASS INC	11/27/2019	19511		0	38.01	38.01
10 E 530 9700 64 7001 0740 0000 0000 0			General Fund/Expenditures/District-Wide Support			38.01	
900442	TRANE U.S. INC	11/27/2019	7097345		0	53.40	53.40
10 E 530 9700 64 5005 0740 0000 0000 0			General Fund/Expenditures/District-Wide Support			53.40	
900443	USI LAMINATE	11/27/2019	0390301801010	BUILDING: SUPPLIES	1201900007	236.66	236.66
10 E 530 0100 27 5005 1200 0000 0000 0			General Fund/Expenditures/Basic Education			236.66	
900444	VALLEY PUBLISHING CO	11/27/2019	2 YEAR SUB.	PHS	0	96.00	96.00
10 E 530 0100 22 5050 4500 0000 0000 0			General Fund/Expenditures/Basic Education			96.00	
900445	VALLEY WATER SERVICES	11/27/2019	14953		0	187.50	187.50

Check Nbr	Vendor Name	Check Date	Invoice Number	Invoice Desc	PO Number	Invoice Amount	Check Amount
10 E 530 9700 64 7001 1100 0000 0000 0				General Fund/Expenditures/District-Wide Support		187.50	
900446	VINE TECH EQUIPMENT LLC	11/27/2019	96539		0	10.59	10.59
10 E 530 9900 53 5005 0730 0000 0000 0				General Fund/Expenditures/Pupil Transportation		10.59	
900447	WAL-MART COMMUNITY	11/27/2019	930300238943		0	30.55	344.99
10 E 530 3465 27 5005 2400 0000 0000 0				General Fund/Expenditures/Home/Family HMS		30.55	
			930400422686		0	36.46	
10 E 530 3465 27 5005 2400 0000 0000 0				General Fund/Expenditures/Home/Family HMS		36.46	
			930900098581		0	111.83	
10 E 530 3165 27 5005 4500 0000 0000 0				General Fund/Expenditures/Home/Family		111.83	
			930900669687		0	98.36	
10 E 530 3165 27 5005 4500 0000 0000 0				General Fund/Expenditures/Home/Family		98.36	
			931000220850		0	67.79	
10 E 530 3165 27 5005 4500 0000 0000 0				General Fund/Expenditures/Home/Family		67.79	
900448	WALDMAN'S PRODUCE	11/27/2019	19925		0	203.50	3,318.35
10 E 530 9800 42 5440 0750 0000 0000 0				General Fund/Expenditures/Food Service		203.50	
			20002		0	938.80	
10 E 530 9800 42 5440 0750 0000 0000 0				General Fund/Expenditures/Food Service		938.80	
			20037		0	191.60	
10 E 530 9800 42 5440 0750 0000 0000 0				General Fund/Expenditures/Food Service		191.60	
			20103		0	840.60	
10 E 530 9800 42 5440 0750 0000 0000 0				General Fund/Expenditures/Food Service		840.60	
			20152		0	154.00	
10 E 530 9800 42 5440 0750 0000 0000 0				General Fund/Expenditures/Food Service		154.00	
			20187		0	989.85	
10 E 530 9800 42 5440 0750 0000 0000 0				General Fund/Expenditures/Food Service		989.85	
900449	WASTE MANAGEMENT OF KENNEWICK	11/27/2019	1815289-1819-4		0	263.16	263.16
10 E 530 9700 65 7145 1100 0000 0000 0				General Fund/Expenditures/District-Wide Support		263.16	
900450	WEAVER EXTERMINATING	11/27/2019	577582		0	99.91	788.42
10 E 530 9700 64 7110 1200 0000 0000 0				General Fund/Expenditures/District-Wide Support		99.91	
			577588		0	199.82	
10 E 530 9700 64 7110 4500 0000 0000 0				General Fund/Expenditures/District-Wide Support		199.82	
			577590		0	83.62	
10 E 530 9700 64 7110 2400 0000 0000 0				General Fund/Expenditures/District-Wide Support		83.62	

Check Nbr	Vendor Name	Check Date	Invoice Number	Invoice Desc	PO Number	Invoice Amount	Check Amount
			577969		0	99.91	
10 E 530 9700 64 7110 1200 0000 0000 0			General Fund/Expenditures/District-Wide Support			99.91	
			577974		0	105.34	
10 E 530 9700 64 7110 1100 0000 0000 0			General Fund/Expenditures/District-Wide Support			105.34	
			577975		0	199.82	
10 E 530 9700 64 7110 4500 0000 0000 0			General Fund/Expenditures/District-Wide Support			199.82	
900451 WESTERN PETERBILT - PASCO, WA		11/27/2019	028P11017		0	103.69	163.41
10 E 530 9900 53 5005 0730 0000 0000 0			General Fund/Expenditures/Pupil Transportation			103.69	
			028P11484		0	59.72	
10 E 530 9900 53 5005 0730 0000 0000 0			General Fund/Expenditures/Pupil Transportation			59.72	
900452 WHITE, CHELSEA L		11/27/2019	SUPPLIES 11/8/2019		0	51.23	51.23
10 E 530 0100 27 5005 1100 0000 0000 0			General Fund/Expenditures/Basic Education			51.23	
900453 YAKIMA BINDERY		11/27/2019	295755-0		0	14.11	363.59
10 E 530 9900 52 5005 0730 0000 0000 0			General Fund/Expenditures/Pupil Transportation			14.11	
			295848-0		0	2.02	
10 E 530 9800 44 5005 0750 0000 0000 0			General Fund/Expenditures/Food Service			2.02	
			296270-0		0	227.42	
10 E 530 9700 12 5005 0710 0000 0000 0			General Fund/Expenditures/District-Wide Support			227.42	
			296375-0		0	120.04	
10 E 530 9800 44 5005 0750 0000 0000 0			General Fund/Expenditures/Food Service			120.04	
900454 YAKIMA MECHANICAL		11/27/2019	50527		0	586.44	586.44
10 E 530 9700 64 7001 4500 0000 0000 0			General Fund/Expenditures/District-Wide Support			586.44	

115 Computer Check(s) For a Total of 277,605.56

The following vouchers, as audited and certified by the Auditing Officer as required by RCW 42.24.080, and those expense reimbursement claims certified as required by RCW 42.24.090, are approved for payment. Those payments have been recorded on this listing which has been made available to the board.

As of November 21, 2019, the board, by a \_\_\_\_\_ vote, approves payments, totaling \$2,303,328.59. The payments are further identified in this document.

Total by Payment Type for Cash Account, CP WARRANTS PAYABLE:  
Warrant Numbers 200000169 through 200000169, totaling \$2,303,328.59

Secretary _____	Board Member _____
Board Member _____	Board Member _____
Board Member _____	Board Member _____

Check Nbr	Vendor Name	Check Date	Check Amount
200000169	CHERVENELL CONSTRUCTION COMPAN	11/27/2019	2,303,328.59
1	Computer	Check(s) For a Total of	2,303,328.59

Check Nbr	Vendor Name	Check Date	Invoice Number	Invoice Desc	PO Number	Invoice Amount	Check Amount
200000169	CHERVENELL CONSTRUCTION COMPAN	11/27/2019	APPLICATION #7		0	2,303,328.59	2,303,328.59
	20 E 530 0013 21 7101 1000 0450 0000 0		Capital Projects/Expenditures/PHS NEW CONSTRUCTION			2,303,328.59	
				1 Computer	Check(s) For a Total of		2,303,328.59

The following vouchers, as audited and certified by the Auditing Officer as required by RCW 42.24.080, and those expense reimbursement claims certified as required by RCW 42.24.090, are approved for payment. Those payments have been recorded on this listing which has been made available to the board.

As of November 21, 2019, the board, by a \_\_\_\_\_ vote, approves payments, totaling \$1,559.57. The payments are further identified in this document.

Total by Payment Type for Cash Account, ASB WARRANTS PAYABLE:  
Warrant Numbers 186574 through 186576, totaling \$1,559.57

Secretary _____	Board Member _____
Board Member _____	Board Member _____
Board Member _____	Board Member _____

Check Nbr	Vendor Name	Check Date	Check Amount
186574	FOOD SERVICES OF AMERICA	11/27/2019	286.40
186575	PROSSER FOOD SERVICES	11/27/2019	32.96
186576	TRT PRINTED	11/27/2019	1,240.21
3	Computer	Check(s) For a Total of	1,559.57



Check Nbr	Vendor Name	Check Date	Invoice Number	Invoice Desc	PO Number	Invoice Amount	Check Amount
186574	FOOD SERVICES OF AMERICA	11/27/2019	9621367	FBLA - supplies for student store - Open PO	4521900028	286.40	286.40
40 E 530 4190 05 0000 0000 0000 0000 0			Associated Student Body	Fund/Expenditures/SCHOOL STORE		286.40	
186575	PROSSER FOOD SERVICES	11/27/2019	379	Freshman Class - football BBQ supplies	4521900077	32.96	32.96
40 E 530 3023 05 0000 0000 0000 0000 0			Associated Student Body	Fund/Expenditures/CLASS OF 2023		32.96	
186576	TRT PRINTED	11/27/2019	1404	T-SHIRTS FUNDRAISER	1221900003	1,240.21	1,240.21
40 E 530 1040 02 0000 0000 0000 0000 0			Associated Student Body	Fund/Expenditures/GENERAL		1,240.21	
			3	Computer	Check(s) For a Total of		1,559.57

## **BOARD PACKET**

**TO:** Board of Directors  
**SUBJECT:** Donation from Prosser AAU  
**AGENDA:** Consent  
**DATE:** November 21, 2019  
**PREPARED BY:** Kristal Cole, *HMS Assistant Principal*

### **Background**

Housel Middle School has received a generous donation of \$2,152.03 from Prosser AAU. The donation will be used to purchase weights and benches for the weight room. The funds will be deposited in the General Fund account.

## **Board Packet**

**To:** Board of Directors  
**Subject:** Amend Policy No. 3210: Nondiscrimination –  
SECOND READING  
**Agenda:** Action  
**Date:** November 21, 2019  
**Prepared By:** Deanna Flores, *Assistant Superintendent*

### **Background:**

Policy No. 3210: Nondiscrimination was adopted in October 2001 and was amended in February 2014. In order to comply with current civil rights requirements, we are submitting the attached policy amendment, based on WSSDA's recommendations. The current policy is also attached, showing the proposed changes with strikethroughs and highlighting. This was brought to the Board on November 13, 2019 for First Reading and the amendment is being brought back tonight for Second and Final Reading.

### **Recommendation:**

It is recommended that the Board of Directors approve the Second and Final Reading of the amendment to Policy No. 3210: Nondiscrimination, to comply with current civil rights requirements.

## Nondiscrimination

The District will provide equal educational opportunity and treatment for all students in all aspects of the academic and activities program without discrimination based on race, religion, creed, color, national origin, age, honorably-discharged veteran or military status, sex, sexual orientation, gender expression or identity, marital status, the presence of any sensory, mental or physical disability, or the use of a trained dog guide or service animal by a person with a disability. The District will provide equal access to school facilities to the Boy Scouts of America and all other designated youth groups listed in Title 36 of the United States Code as a patriotic society. District programs will be free from sexual harassment. Auxiliary aids and services will be provided upon request to individuals with disabilities.

Conduct against any student that is based on one of the categories listed above that is sufficiently severe, persistent or pervasive as to limit or deny the student's ability to participate in or benefit from the District's course offerings; educational programming or any activity will not be tolerated. When a District employee knows, or reasonably should know, that such discriminatory harassment is occurring or has occurred, the District will take prompt and effective steps reasonably calculated to end the harassment, prevent its recurrence and remedy its effects.

The District's nondiscrimination statement will be included in all written announcements, notices, recruitment materials, employment applications, and other publications made available to all students, parents or employees. The statement will include: 1) notice that the District will not discriminate in any programs or activities on the basis of any of the above-listed categories; 2) the name and contact information of the District's compliance officer designated to ensure compliance with this policy; and 3) the names and contact information of the District's Section 504 and Title IX compliance officers.

The District will annually publish notice reasonably calculated to inform students, students' parents/guardians (in a language that they can understand, which may require language assistance), and employees of the District's discrimination complaint procedure.

The Superintendent will designate a staff member to serve as the compliance officer for this policy. The compliance officer will be responsible for investigating any discrimination complaints communicated to the District.

The District will provide training to administrators and certificated and classroom personnel regarding their responsibilities under this policy and to raise awareness of and eliminate bias and discrimination based on the protected classes identified in this policy.

Cross References:                   2020 - Course Design, Selection and Adoption of  
  Instructional Materials  
  2030 - Service Animals in Schools

2140 - Guidance and Counseling  
2150 - Co-Curricular Program  
2151 - Interscholastic Activities  
3211 - Gender-Inclusive Schools  
4217 - Effective Communication  
4260 - Use of School Facilities

Legal References:

Chapter 28A.640 RCW Sexual equality  
Chapter 28A.642 RCW Discrimination prohibition  
Chapter 49.60 RCW Discrimination — Human rights  
commission  
WAC 392-190-020 Training—Staff responsibilities—Bias  
awareness  
WAC 392-190-060 Compliance – School district designation  
of responsible employee - Notification  
WAC 392-400-215 Student rights  
20 U.S.C. 7905 Boy Scouts of American Equal Access Act  
42 U.S.C. 12101-12213 Americans with Disabilities Act

Management Resources:

2016 - March Issue  
2014 - December Issue  
2013 - April Issue  
2012 - December Issue  
2011 - June Issue  
Policy News, August 2007 Washington's Law Against  
Discrimination

Adoption Date: October 2, 2001  
Amended Date: February 18, 2014

## NONDISCRIMINATION

The District will provide equal educational opportunity and treatment for all students in all aspects of the academic and activities program without discrimination ~~regard to~~ based on race, religion, creed, color, national origin, age, honorably-discharged veteran or military status, sex, sexual orientation, ~~(including gender expression or identity)~~, marital status, the presence of any sensory, mental or physical disability ~~participation in the Boy Scouts of America~~ or the use of a trained dog guide or service animal by a person with a disability. The District will provide equal access to school facilities to Boy Scouts of America and all other designated youth groups listed in Title 36 of the United States Code as a patriotic society. District programs will be free from sexual harassment. Auxiliary aids and services will be provided upon request to individuals with disabilities.

Conduct against any student that is based on one of the categories listed above that is sufficiently severe, persistent or pervasive as to limit or deny the student's ability to participate in or benefit from the district's course offerings; educational programming or any activity will not be tolerated. When a District employee knows, or reasonably should know, that such discriminatory harassment is occurring or has occurred, the district will take prompt and effective steps reasonably calculated to end the harassment, prevent its recurrence and remedy its effects.

The District's nondiscrimination statement will be included in all written announcements, notices, recruitment materials, employment applications and other publications made available to all students, parents or employees. The statement will include: 1) notice that the District will not discriminate in any programs or activities on the basis of any of the above-listed categories; 2) the name and contact information of the District's compliance officer designated to ensure compliance with this policy; and 3) the names and contact information of the District's Section 504 and Title IX compliance officers.

~~The Superintendent will provide for annual evaluations, periodic surveys, annual notice and complaint procedures as required by law to ensure that there is in fact equal opportunity for all students in the district.~~

The District will annually publish notice reasonably calculated to inform students, students' parents/guardians (in a language that they can understand, which may require language assistance), and employees of the district's discrimination complaint procedure.

The ~~board~~ Superintendent will designate a staff member to serve as the compliance officer for this policy. The compliance officer will be responsible for investigating any discrimination complaints communicated to the District.

The District will provide training to administrators and certificated and classroom personnel regarding their responsibilities under this policy and to raise awareness of and eliminate bias and discrimination based on the protected classes identified in this policy.

Cross References: Policy 2020

Policy 2030

Policy 2140

Policy 2150

Policy 4260

Curriculum Development and Adoption  
of Instructional Materials

Service Animals in Schools

Guidance and Counseling

Co-Curricular Program

Use of School Facilities

Legal References: RCW 28A.640

RCW 28A.642

RCW 49.60

WAC 392-190

WAC 392-400-215

20 U.S.C. § 7905

42 U.S.C. §§ 12101-12213

Sexual Equality

Discrimination prohibition

Discrimination – Human Rights Commission

Equal Educational Opportunity – Unlawful

Discrimination Prohibited

Student Rights

Boy Scouts of America Equal Access Act

Americans with Disabilities Act

Management Resources:

*Policy News*, June 2011

*Policy News*, August 2007

Washington’s Laws on Discrimination

Washington’s Law Against Discrimination

**Adoption Date: October 2, 2001**

**Amended Date: February 18, 2014**

**Board Packet**

**To:** Board of Directors  
**Subject:** Amend Policy No. 5010: Nondiscrimination and Affirmative Action – SECOND READING  
**Agenda:** Action  
**Date:** November 21, 2019  
**Prepared By:** Deanna Flores, *Assistant Superintendent*

**Background:**

Policy No. 5010 was updated and amended in February 2014. Since that time, additional changes have been recommended by WSSDA to comply with current civil rights laws. The proposed policy draft is attached. The current policy is also attached, showing the proposed changes with strikethroughs and highlighting. This was brought to the Board on November 13, 2019 for First Reading and the amendment is being brought back tonight for Second and Final Reading.

**Recommendation:**

It is recommended that the Board of Directors approve the Second and Final Reading of amendment Policy No. 5010: Nondiscrimination and Affirmative Action, to comply with current civil rights requirements.



## NONDISCRIMINATION AND AFFIRMATIVE ACTION

### **1. Nondiscrimination**

The District will provide equal employment opportunity and treatment for all applicants and staff in recruitment, hiring, retention, assignment, transfer, promotion and training. Such equal employment opportunity will be provided without discrimination with respect to race, creed, religion, color, national origin, age, honorably-discharged veteran or military status, sex, sexual orientation including gender expression or identity, marital status, the presence of any sensory, mental or physical disability or the use of a trained dog guide or service animal by a person with a disability.

The Board will designate a staff member to serve as the compliance officer.

### **2. Affirmative Action**

The District, as a recipient of public funds, is committed to undertake affirmative action which will make effective equal employment opportunities for staff and applicants for employment. Such affirmative action will include a review of programs, the setting of goals and the implementation of corrective employment procedures to increase the ratio of aged, persons with disabilities, ethnic minorities, women and Vietnam veterans, who are under-represented in the job classifications in relationship to the availability of such persons having requisite qualifications. Affirmative action plans may not include hiring or employment preferences based on gender or race, including color, ethnicity or national origin. Such affirmative action will also include recruitment, selection, training, education and other programs.

The Superintendent will develop an affirmative action plan which specifies the personnel procedures to be followed by the staff of the district and will ensure that no such procedures discriminate against any individual. Reasonable steps will be taken to promote employment opportunities of those classes that are recognized as protected groups – aged, persons with disabilities, ethnic minorities and women and Vietnam veterans, although under state law, racial minorities and women may not be treated preferentially in public employment.

This policy, as well as the affirmative action plan, regulations and procedures developed according to it, will be disseminated widely to staff in all classifications and to all interested patrons and organizations. Progress toward the goals established under this policy will be reported annually to the Board.

### **3. Employment of Persons with Disabilities**

In order to fulfill its commitment of nondiscrimination to those with disabilities, the following conditions will prevail:

- A. No qualified person with disabilities, will solely by reason of a disability, be subjected to discrimination, and the District will not limit, segregate or classify any applicants for employment or any staff member in any way that adversely affects his/her opportunities or status because of a disability. This prohibition applies to all aspects of employment from recruitment to promotions and includes fringe benefits and other elements of compensation.

- B. The District will make reasonable accommodation to the known physical or mental limitations of an otherwise qualified disabled applicant or staff member unless it is clear that an accommodation would impose an undue hardship on the operation of the district program. Such reasonable accommodations may include:
1. Making facilities used by staff readily accessible and usable by persons with disabilities; and
  2. Job restructuring, part-time or modified work schedules, acquisition or modification of equipment or devices, the provision of readers or interpreters and other similar actions.

In determining whether or not accommodation would impose an undue hardship on the district, factors to be considered include the nature and cost of the accommodation.

- C. The District will not use of any employment tests or criteria that screen out persons with disabilities unless the test or criteria is clearly and specifically job-related. Also, the District will not use such tests or criteria if alternative tests or criteria (that do not screen out persons with disabilities) are available.
- D. While the District may not make pre-employment inquiry as to whether an applicant has a disability or as to the nature and severity of any such disability, it may inquire into an applicant's ability to perform job-related functions.
- E. Any staff member who believes that there has been a violation of this policy or the law prohibiting discrimination because of a disability may initiate a grievance through the procedures for staff complaints.

#### **4. Nondiscrimination for Military Service**

The District will not discriminate against any person who is a member of, applies to be a member or performs, has performed, applies to perform, or has an obligation to perform service in a uniformed service, on the basis of that participation in a uniformed service. This includes initial employment, retention in employment, promotion or any benefit of employment. The District will also not discriminate against any person who has participated in the enforcement of these rights under state or federal law.

Cross References: Board Policy 2030  
Board Policy 5270  
Board Policy 5407

Service Animals in Schools  
Resolution of Staff Complaints  
Military Leave

Legal References: RCW 28A.400.310

Law against discrimination applicable to districts' employment practices

RCW 28A.640.020

Regulations, guidelines to eliminate discrimination – Scope – Sexual harassment policies

RCW 28A.642

Discrimination prohibition

RCW 49.60 RCW 49.60.030	Discrimination - Human Rights Commission Freedom from discrimination - Declaration of civil rights
RCW 49.60.180 RCW 49.60.400	Unfair practices of employers Discrimination, preferential treatment prohibited
RCW 73.16 WAC 392-190	Employment and Re-employment Equal Education Opportunity – Unlawful Discrimination Prohibited
WAC 392-190-0592	Public school employment – Affirmative Action Program
42 USC 2000e1-2000e10 20 USC § 1681-1688	Title VII of the Civil Rights Act of 1964 Title IX Educational Amendments of 1972
42 USC 12101 - 12213 8 USC 1324	Americans with Disabilities Act (IRCA) Immigration Reform and Control Act of 1986
38 USC §§ 4301-4333	Uniformed Services Employment and Re-employment Rights Act
29 USC 794 34 CFR § 104	Vocational Rehabilitation Act of 1973 Nondiscrimination on the basis of handicap in programs or activities receiving federal financial assistance

Management Resources:

2018 – May Issue	
2017 – April Issue	
2014 – December Issue	
2013 – June Issue	
2011 – June Issue	
2011- February Issue	
<i>Policy News</i> , August 2007	Washington’s Law Against Discrimination
<i>Policy News</i> , June 2001	State Updates Military Leave Rights

Adoption Date: June 5, 2001

Amended Date: January 9, 2007, March 2, 2010, February 18, 2014

## **NONDISCRIMINATION AND AFFIRMATIVE ACTION**

### **Nondiscrimination**

The District will provide equal employment opportunity and treatment for all applicants and staff in recruitment, hiring, retention, assignment, transfer, promotion and training. Such equal employment opportunity will be provided without discrimination with respect to race, creed, religion, color, national origin, age, honorably-discharged veteran or military status, sex, sexual orientation including gender expression or identity, marital status, the presence of any sensory, mental or physical disability or the use of a trained dog guide or service animal by a person with a disability.

The Board will designate a staff member to serve as the compliance officer.

### **Affirmative Action**

The District, as a recipient of public funds, is committed to undertake affirmative action which will make effective equal employment opportunities for staff and applicants for employment. Such affirmative action will include a review of programs, the setting of goals and the implementation of corrective employment procedures to increase the ratio of aged, persons with disabilities, ethnic minorities, women and Vietnam veterans, who are under-represented in the job classifications in relationship to the availability of such persons having requisite qualifications. Affirmative action plans may not include hiring or employment preferences based on gender or race, including color, ethnicity or national origin. Such affirmative action will also include recruitment, selection, training, education and other programs.

The Superintendent will develop an affirmative action plan which specifies the personnel procedures to be followed by the staff of the district and will ensure that no such procedures discriminate against any individual. Reasonable steps will be taken to promote employment opportunities of those classes that are recognized as protected groups - aged, persons with disabilities, ethnic minorities and women and Vietnam veterans, although under state law, racial minorities, and women may not be treated preferentially in public employment.

This policy, as well as the affirmative action plan, regulations and procedures developed according to it, will be disseminated widely to staff in all classifications and to all interested patrons and organizations. Progress toward the goals established under this policy will be reported annually to the board.

### **Employment of Persons with Disabilities**

In order to fulfill its commitment of nondiscrimination to those with disabilities, the following conditions will prevail:

- A. No qualified person with disabilities, will solely by reason of a disability, be subjected to discrimination and the District will not limit, segregate or classify any applicants for employment or any staff member in any way that adversely affects his/her opportunities or status because of a disability. This prohibition applies to all aspects of employment from recruitment to promotions and includes fringe benefits and other elements of compensation.

B. The District will make reasonable accommodation to the known physical or mental limitations of an otherwise qualified disabled applicant or staff member unless it is clear that an accommodation would impose an undue hardship on the operation of the district program. Such reasonable accommodations may include:

1. Making facilities used by staff readily accessible and usable by persons with disabilities; and
2. Job restructuring, part-time or modified work schedules, acquisition or modification of equipment or devices, the provision of readers or interpreters and other similar actions.

In determining whether or not accommodation would impose an undue hardship on the District, factors to be considered include the nature and cost of the accommodation.

C. The District will not make use of any employment tests or criteria that screens out persons with disabilities unless:

1. The test or criteria is clearly and specifically job-related; ~~and~~. Also, the District will not use such tests or criteria if alternative tests or criteria (that do not screen out persons with disabilities) are available
2. ~~Alternative tests or criteria that do not screen out persons with disabilities are available.~~

D. While the District may not make pre-employment inquiry as to whether an applicant has a disability or as to the nature and severity of any such disability, it may inquire into an applicant's ability to perform job-related functions; ~~and~~.

E. Any staff member who believes that there has been a violation of this policy or the law prohibiting discrimination because of a disability may initiate a grievance through the procedures for staff complaints.

#### **Nondiscrimination for Military Service**

The District will not discriminate against any person who is a member of, applies to be a member or performs, has performed, applies to perform, or has an obligation to perform service in a uniformed service, on the basis of that participation in a uniformed service. This includes initial employment, retention in employment, promotion or any benefit of employment. The District will also not discriminate against any person who has participated in the enforcement of these rights under state or federal law.

Cross References: Board Policy 2030  
Board Policy 5270  
Board Policy 5407

Service Animals in Schools  
Resolution of Staff Complaints  
Military Leave

Legal References: RCW 28A.400.310

Law against discrimination applicable to districts' employment practices

RCW 28A.640.020	Regulations, guidelines to eliminate discrimination - Scope - Sexual harassment policies
RCW 28A.642	Discrimination prohibition
RCW 49.60	Discrimination - Human Rights Commission
RCW 49.60.030	Freedom from discrimination - Declaration of civil rights
RCW 49.60.180	Unfair practices of employers
RCW 49.60.400	Discrimination, preferential treatment prohibited
RCW 73.16	Employment and Re-employment
WAC 392-190	Equal Education Opportunity - Unlawful Discrimination Prohibited
WAC 392-190-0592	Public school employment - Affirmative Action Program
42 USC 2000e1-2000e1 0	Title VII of the Civil Rights Act of 1964
20 USC§ 1681-1688	Title IX Educational Amendments of 1972
42 USC 12101 - 12213	Americans with Disabilities Act
8 USC 1324	(IRCA) Immigration Reform and Control Act of 1986
38 USC§§ 4301-4333	Uniformed Services Employment and Re-employment Rights Act
29 USC 794	Vocational Rehabilitation Act of 1973
34 CFR § 104	Nondiscrimination on the basis of handicap in programs or activities receiving federal financial assistance

Management Resources:

<i>Policy News</i> , June 2011	Laws Against Discrimination Address Equal Education Opportunities
<i>Policy News</i> , February 2011	Nondiscrimination
<i>Policy News</i> , August 2007	Washington's Law Against Discrimination
<i>Policy News</i> , June 2001	State Updates Military Leave Rights

**Adoption Date:** June 5, 2001

**Amended Date:** January 9, 2007, March 2, 2010, February 18, 2014

## Board Packet

**To:** Board of Directors  
**Subject:** Amend Policy No. 5011: Sexual Harassment of District Staff Prohibited – SECOND READING  
**Agenda:** Action  
**Date:** November 21, 2019  
**Prepared By:** Deanna Flores, *Assistant Superintendent*

### Background:

Policy No. 5011: Sexual Harassment was adopted in February 2014. Since that time, additional changes have been recommended by WSSDA to comply with current civil rights laws. The proposed policy draft is attached. The current policy is also attached, showing the proposed changes with strikethroughs and highlighting. This was brought to the Board on November 13, 2019 for First Reading and the amendment is being brought back tonight for Second and Final Reading.

### Recommendation:

It is recommended that the Board of Directors approve the Second and Final Reading of the amendment to Policy No. 5011: Sexual Harassment of District Staff Prohibited, to comply with current civil rights requirements.

## **Sexual Harassment of District Staff Prohibited**

This District is committed to a positive and productive working environment free from discrimination, including sexual harassment. This commitment extends to all employees and other persons involved in academic, educational, extracurricular, athletic and other programs or activities of the school, whether that program or activity is in a school facility, on school transportation, or at a class training held elsewhere.

### **Definitions**

For purposes of this policy, sexual harassment means unwelcome conduct or communication of a sexual nature. Sexual harassment can occur student to adult, adult to adult or can be carried out by a group of students or adults and will be investigated by the District even if the alleged harasser is not a part of the school staff or student body. The District prohibits sexual harassment of District employees by other students, employees or third parties involved in school district activities.

Under federal and state law, the term "sexual harassment" includes:

- acts of sexual violence;
- unwelcome sexual or gender-directed conduct or communications that interferes with an individual's employment performance or creates an intimidation, hostile, or offensive environment;
- unwelcome sexual advances;
- unwelcome requests for sexual favors;
- sexual demands when submission is a stated or implied obtaining work opportunity or other benefit;
- sexual demands where submission or rejection is a factor in a work or other school-related decision affecting an individual.

A "hostile environment" for an employee is created where the unwanted conduct is sufficiently severe or pervasive to create a work environment that a reasonable person would consider intimidation, hostile, or abusive.

### **Investigation and Response**

If the District knows, or reasonably should know, that sexual harassment has created a hostile environment, the District will promptly investigate to determine what occurred and will take appropriate steps to resolve the situation. If an investigation reveals that sexual harassment has created a hostile environment, the District will take prompt and effective steps reasonably calculated to end sexual harassment, eliminate the hostile environment, prevent its occurrence and, as appropriate, remedy its effects. The District will take prompt, equitable and remedial action within its authority every time a report, complaint and grievance alleging sexual harassment comes to the attention of the District, either formally or informally.

Allegations of criminal misconduct will be reported to law enforcement and suspected child abuse will be reported to law enforcement or Child Protective Services. Regardless of whether



the misconduct is reported to law enforcement, school staff will promptly investigate to determine what occurred and take appropriate steps to resolve the situation to the extent that such investigation does not interfere with an on-going criminal investigation. A criminal investigation does not relieve the District of its independent obligation to investigate and resolve sexual harassment.

Engaging in sexual harassment will result in appropriate discipline or other appropriate sanctions against offending staff or third parties involved in school district activities. Anyone else who engages in sexual harassment on school property or at school activities will have their access to school property and activities restricted, as appropriate.

### **Retaliation and False Allegations**

Retaliation against any person who makes or is a witness in a sexual harassment complaint is prohibited and will result in appropriate discipline. The District will take appropriate actions to protect involved persons from retaliation.

It is a violation of this policy to knowingly report false allegations of sexual harassment. Persons found to knowingly report or corroborate false allegations will be subject to appropriate discipline

### **Staff Responsibilities**

The Superintendent will develop and implement formal and informal procedures for receiving, investigating and resolving complaints or reports of sexual harassment. The procedures will include reasonable and prompt time lines and delineate staff responsibilities under this policy.

Any school employee who witnesses sexual harassment or receives report, informal complaint, or written complaint about sexual harassment is responsible for informing the district's Title IX or Civil Rights Compliance Coordinator. All staff are also responsible for directing complainants to the formal complaint process.

Reports of discrimination and discriminatory harassment will be referred to the District's Title IX/Civil Rights Compliance Coordinator. Reports of disability discrimination or harassment will be referred to the District's Section 504 Coordinator.

### **Notice and Training**

The Superintendent will develop procedures to provide information and education to District staff, parents and volunteers regarding this policy and the recognition and prevention of sexual harassment. At a minimum, sexual harassment recognition and prevention and the elements of this policy will be included in staff and regular volunteer orientation. This policy and the procedure, which includes the complaint process, will be posted in each District building in a place available to staff, parents, volunteers and visitors. Information about the policy and procedure will be clearly stated and conspicuously posted throughout each school building, provided to each employee and reproduce in each staff, volunteer and parent

handbook. Such notices will identify the District's Title IX coordinator and provide contact information, including the coordinator's email address.

**Policy Review**

The Superintendent will make an annual report to the Board reviewing the use and efficacy of this policy and related procedures. Recommendations for changes to this policy, if applicable, will be included in the report. The Superintendent is encouraged to involve staff, volunteers and parents in the review process.

Cross References:           3205 - Sexual Harassment of Students Prohibited  
                                      3207 - Prohibition of Harassment, Intimidation, and Bullying  
                                      3210 - Nondiscrimination  
                                      3211 - Gender-Inclusive Schools  
                                      3421 - Child Abuse, Neglect, and Exploitation Prevention  
                                      5010 - Nondiscrimination and Affirmative Action

Legal References:           RCW 28A.640.020 Regulations, guidelines to eliminate  
                                      discrimination — Scope — Sexual harassment policies  
                                      WAC 392-190-058 Sexual harassment  
                                      20 U.S.C. 1681-1688

Management Resources:   2015 - July Policy Alert  
                                      2014 - December Issue  
                                      2010 - October Issue

Adoption Date: February 18, 2014

## Sexual Harassment

This District is committed to a positive and productive education and working environment free from discrimination, including sexual harassment. ~~The District prohibits sexual harassment of students, employees and others involved in school district activities.~~ This commitment extends to all employees and other persons involved in academic, educational, extracurricular, athletic and other programs or activities of the school, whether that program or activity is in a school facility, on school transportation, or at a class training held elsewhere.

### Definitions

For purposes of this policy, sexual harassment means unwelcome conduct or communication of a sexual nature. Sexual harassment can occur student to adult, adult to adult or can be carried out by a group of students or adults and will be investigated by the District even if the alleged harasser is not a part of the school staff or student body. The District prohibits sexual harassment of District employees by other students, employees or third parties involved in school district activities.

~~Sexual harassment occurs when:~~

- ~~A. Submitting to the harasser's sexual demands is a stated or implied condition of obtaining an education or work opportunity or other benefit;~~
- ~~B. Submission to or rejection of sexual demands is a factor in an academic, work or other school-related decision affecting an individual; or~~
- ~~C. Unwelcome sexual or gender-directed conduct or communication interferes with an individual's performance or creates an intimidating, hostile or offensive environment.~~

~~Sexual harassment can occur adult to student, student to adult, student to student, adult to adult, male to female, female to male, male to male and female to female.~~

Under federal and state law, the term "sexual harassment" includes:

- acts of sexual violence;
- unwelcome sexual or gender-directed conduct or communications that interferes with an individual's employment performance or creates an intimidation, hostile, or offensive environment;
- unwelcome sexual advances;
- unwelcome requests for sexual favors;
- sexual demands when submission is a stated or implied obtaining work opportunity or other benefit;
- sexual demands where submission or rejection is a factor in a work or other school-related decision affecting an individual.

A "hostile environment" for an employee is created where the unwanted conduct is sufficiently severe or pervasive to create a work environment that a reasonable person would consider intimidation, hostile, or abusive.

~~The District will take prompt, equitable and remedial action within its authority on reports, complaints and grievances alleging sexual harassment that come to the attention of the district, either formally or informally. Allegations of criminal misconduct will be reported to law enforcement and suspected child abuse will be reported to law enforcement or Child Protective Services. Persons found to have been subjected to sexual harassment will have appropriate~~

~~school district services made reasonably available to them and adverse consequences of the harassment will be reviewed and remedied, as appropriate.~~

### **Investigation and Response**

If the District knows, or reasonably should know, that sexual harassment has created a hostile environment, the District will promptly investigate to determine what occurred and will take appropriate steps to resolve the situation. If an investigation reveals that sexual harassment has created a hostile environment, the District will take prompt and effective steps reasonably calculated to end sexual harassment, eliminate the hostile environment, prevent its occurrence and, as appropriate, remedy its effects. the district will take prompt, equitable and remedial action within its authority every time a report, complaint and grievance alleging sexual harassment comes to the attention of the district, either formally or informally.

Allegations of criminal misconduct will be reported to law enforcement and suspected child abuse will be reported to law enforcement or Child Protective Services. Regardless of whether the misconduct is reported to law enforcement, school staff will promptly investigate to determine what occurred and take appropriate steps to resolve the situation to the extent that such investigation does not interfere with an on-going criminal investigation. A criminal investigation does not relieve the district of its independent obligation to investigate and resolve sexual harassment.

Engaging in sexual harassment will result in appropriate discipline or other appropriate sanctions against offending students, staff and contractors or third parties involved in school district activities. Anyone else who engages in sexual harassment on school property or at school activities will have their access to school property and activities restricted, as appropriate.

### **Retaliation and False Allegations**

Retaliation against any person who makes or is a witness in a sexual harassment complaint is prohibited and will result in appropriate discipline. The District will take appropriate actions to protect involved persons from retaliation.

It is a violation of this policy to knowingly report false allegations of sexual harassment. Persons found to knowingly report or corroborate false allegations will be subject to appropriate discipline.

### **Staff Responsibilities**

The Superintendent will develop and implement formal and informal procedures for receiving, investigating and resolving complaints or reports of sexual harassment. The procedures will include reasonable and prompt time lines and delineate staff responsibilities under this policy. ~~All staff are responsible for receiving informal complaints and reports of sexual harassment and informing appropriate district personnel of the complaint or report for investigation and resolution.~~

Any school employee who witnesses sexual harassment or receives report, informal complaint, or written complaint about sexual harassment is responsible for informing the district's Title IX or Civil Rights Compliance Coordinator. All staff are also responsible for directing complainants to the formal complaint process.

Reports of discrimination and discriminatory harassment will be referred to the district's Title IX/Civil Rights Compliance Coordinator. Reports of disability discrimination or harassment will be referred to the district's Section 504 Coordinator.

**Notice and Training**

The Superintendent will develop procedures to provide age-appropriate information and education to District staff, students, parents and volunteers regarding this policy and the recognition and prevention of sexual harassment. At a minimum, sexual harassment recognition and prevention and the elements of this policy will be included in staff, student and regular volunteer orientation. This policy and the procedure, which includes the complaint process, will be posted in each District building in a place available to staff, students, parents, volunteers and visitors. Information about the policy and procedure will be clearly stated and conspicuously posted throughout each school building, provided to each employee and reproduced in each student, staff, volunteer and parent handbook. Such notices will identify the District's Title IX coordinator and provide contact information, including the coordinator's email address.

**Policy Review**

The Superintendent will make an annual report to the Board reviewing the use and efficacy of this policy and related procedures. Recommendations for changes to this policy, if applicable, will be included in the report. The Superintendent is encouraged to involve staff, students, and volunteers and parents in the review process.

Cross References:	Model Policy 3207	Prohibition of Harrassment, Intimidation and Bullying
	Model Policy 3210	Nondiscrimination
	Model Policy 3240	Student Conduct
	3421	Child Abuse, Neglect and Exploitation Prevention
	Model Policy 5010	Nondiscrimination and Affirmative Action
	Model Policy 5281	Disciplinary Action and Discharge
Legal References:	RCW 28A.640.020	Regulations, guidelines to eliminate discrimination — Scope—Sexual harrassement policies
	WAC 392-190-056-058	Sexual harassment
Management Resources:		
	<i>Policy News</i> , October 2011	Policy Manual Revisions

**Adoption Date: February 18, 2014**