



REGULAR BOARD MEETING

Keene-Riverview Elementary, MPR, 832 Park Avenue

Tuesday, June 27, 2017 07:45 PM

- I. 5:30 - 7:00 p.m. - Community Information Meeting to Present Concepts for Placement of Buildings for the New Prosser High School
- II. 7:00 - 7:45 p.m. - Executive Session: Meeting of a Quasi-Judicial Body - RCW 42.30.140 (2)
- III. 7:45 p.m. - Call to Order
 1. Pledge of Allegiance
 2. Approval of Agenda
 3. Communications
- IV. Information Items:
- V. Protocol for Addressing Board:

[Welcome to the Board Meeting \(p. 3\)](#)
- VI. Hearing of Visitors:
- VII. Reports:
 1. Assistant Superintendent's Report
 2. Business Manager's Report

[May 2017 Financial Reports \(p. 4\)](#)
[June 2017 Enrollment Report \(p. 18\)](#)
 3. Superintendent's Report
 4. Board Members' Reports
- VIII. Consent Items:
 1. Certificated Personnel

[Cert - June 27, 2017 \(p. 22\)](#)
 2. Classified Personnel

[Class - June 27, 2017 \(p. 23\)](#)
 3. Approval of Minutes

Special Board Meeting - June 12, 2017 (p. 24)

Regular Board Meeting - June 13, 2017 (p. 25)

Special Board Meeting - June 14, 2017 (p. 33)

Special Board Meeting - June 16, 2017 (p. 34)

4. Contracts and Personal Service Agreements

Contracts and PSAs (p. 35)

5. Volunteer Coaches

IX. Old Business:

X. Action Items:

1. Vouchers and Payroll

Payable June 30, 2017 (p. 36)

2. Donation from Prosser Booster Club

Booster Club Donation - Cheerleaders (p. 81)

3. Rescind Board Action of April 25, 2017

Certificated Personnel (p. 82)

XI. Discussion Items:

XII. Adjournment:

**XIII. Executive Session: Meeting of a Quasi-Judicial Body - RCW 42.30.140
(2)**

XIV. Future Meetings:

- *Community Information Meeting, June 29, 2017, Keene-Riverview Elementary MPR, 5:30 p.m.*
- *Regular Board Meeting, July 11, 2017, Keene-Riverview Elementary MPR, 7:00 p.m.*

SCHOOL BOARD MEETINGS

Prosser School District No. 116 * 1126 Meade Avenue, Suite A * Prosser, WA 99350

Welcome to a meeting of Prosser School District Board of Directors!

Your views and interest in education are important to us and to your schools. Whether your visit is for the purpose of bringing information to the board's attention, solving a problem, or simply to see what's going on, we hope you'll feel welcome and comfortable at this meeting. We also hope that you will leave with a better understanding of your school district and its board of directors.

How the Board Operates

As the board meeting progresses, you may notice that there is quick action on some items. This is because the board generally considers an issue for several meetings before taking action, and also because background materials on the various items are sent to members for their careful study prior to the meeting. Sometimes the board will approve a motion that encompasses many items. These items, grouped under the "consent" portion of the agenda, are considered routine. You'll be able to follow the action more carefully if you pick up a copy of the agenda that is available.

Board members are: Peggy Douglas, President; Andy Howe, Vice-President; Scotty Hunt, legislative representative, Jesalyn Cole and Scott Coleman.

About Board Meetings

Business meetings are held twice each month, usually on the 2nd and 4th Tuesdays. The first meeting of the month is also a time for the various educational programs of the district to provide an educational presentation to the Board. These meetings begin at 7:00 p.m.

The board encourages input on all issues under discussion at the business meetings.

About Executive Sessions

The board may occasionally go into executive session, thus excluding the public and the news media from

witnessing the discussion. You should know though, that the board will only discuss issues in executive session. It must, by law, take all actions in an open meeting. The law also limits what the board can legally discuss in executive session. These closed discussions may only concern litigation, personnel selection or evaluation, negotiations, complaints against an officer or staff member or real estate transactions where public disclosure would be damaging to individuals or the general welfare of the district. Before going into executive session, the board president must estimate the time the board will return to open session.

Study Sessions

Board Study Sessions are held by the board to address specific issues and to give the board an opportunity to have staff make presentations regarding specific areas of instruction or operation. Study sessions are open meetings and offer the community an opportunity to hear the issues being discussed. Study sessions follow the same protocols as regular board meetings for addressing the board with questions or concerns.

Addressing the Board

You may present a concern to the board during the time reserved for hearing public comment. If this is the case we ask that you:

- Prior to the start of the meeting, sign in, noting the topic you intend to address to the board.
- Come to the microphone and state your name.
- Do not reflect adversely on the political or economic view, ethnic background, character or motives of any individual.
- Do keep your comments concise, non-emotional and brief.

The board is interested in hearing your concerns and your compliments too. It's best to call the superintendent's office a couple of days before the meeting. If this isn't possible, you can ask the board president to recognize you during the

hearing section.

Board Hearings

The school board can be compared to a "court of last resort." If a concern cannot be solved by first talking with the teacher, principal, or appropriate district personnel, it may be forwarded to the board for hearing. Sometimes this hearing may be conducted in "executive session," meaning the public and the media are not in attendance.

About Your Board

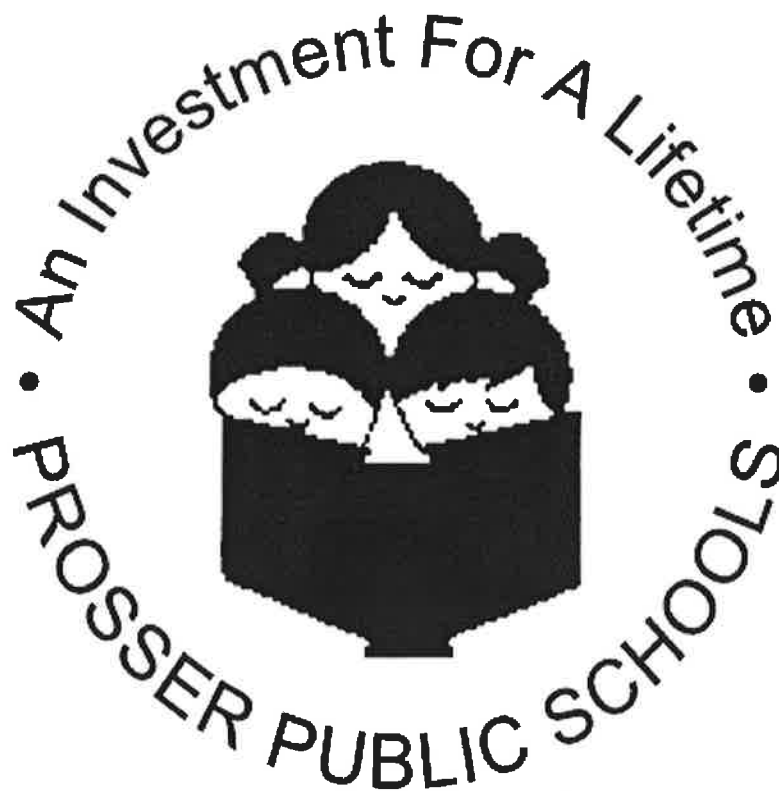
Public schools are especially close to the communities they serve because they are governed by men and women selected from the community. These men and women - your school board; are volunteers who spend a great deal of time on the many details involved in providing quality education.

Board members serve four-year terms. They are required to file financial disclosure statements with the Washington State Public Disclosure Commission and must be registered voters of the school district

School board members attend meetings, keep communications open with other members of the community and represent the needs of the district before local, state and national representatives. They make critical decisions that have a direct impact on what children learn and how they learn it. However, a school board is a legal body and can only make decisions as a body.

You may notice that many of the decisions the board must make are not directly related to instruction. School board members are also responsible for keeping the buildings and grounds in good shape, balancing the budget, protecting the district's legal interests, and providing for long-range planning.

May 2017 Financial Reports



PROSSER SCHOOL DISTRICT NO.116

2016-2017 Budget Status Report

10--General Fund-- FUND BALANCE -- AGENCY ACCOUNTS -- Revised -- BUDGET-STATUS-REPORT

Fiscal Year 2016 (September 1, 2016 - August 31, 2017)

For the PROSSER SCHOOL DISTRICT NO.116 School District for the Month of May, 2017

	ANNUAL BUDGET	ACTUAL FOR MONTH	ACTUAL FOR YEAR	ENCUMBRANCES	BALANCE	PERCENT
A. REVENUES/OTHER FIN. SOURCES						
1000 LOCAL TAXES	4,023,238	385,313.76	3,846,654.50		176,583.50	95.61
2000 LOCAL SUPPORT NONTAX	377,614	61,517.55	394,411.22		16,797.22-	104.45
3000 STATE, GENERAL PURPOSE	19,828,805	1,455,972.31	15,188,843.81		4,639,961.19	76.60
4000 STATE, SPECIAL PURPOSE	6,170,518	285,898.17	3,850,353.60		2,320,164.40	62.40
5000 FEDERAL, GENERAL PURPOSE	60,000	.00	101,237.27		41,237.27-	168.73
6000 FEDERAL, SPECIAL PURPOSE	2,939,882	235,445.37	1,995,142.09		944,739.91	67.86
7000 REVENUES FR OTH SCH DIST	20,000	.00	6,335.10		13,664.90	31.68
8000 OTHER AGENCIES AND ASSOCIATES	0	42.80	1,978.78		1,978.78-	0.00
9000 OTHER FINANCING SOURCES	0	.00	.00		.00	0.00
Total REVENUES/OTHER FIN. SOURCES	33,420,057	2,424,189.96	25,384,956.37		8,035,100.63	75.96
B. EXPENDITURES						
00 Regular Instruction	17,762,968	1,463,367.64	12,826,544.48	3,571,356.37	1,365,067.15	92.32
10 Federal Stimulus	0	.00	.00	0.00	.00	0.00
20 Special Ed Instruction	3,657,178	304,878.33	2,673,795.92	707,287.64	276,094.44	92.45
30 Voc. Ed Instruction	1,087,143	91,237.82	822,448.02	268,913.70	4,218.72-	100.39
40 Skills Center Instruction	0	.00	.00	0.00	.00	0.00
50+60 Compensatory Ed Instruct.	3,554,151	233,262.09	1,986,319.47	550,040.09	1,017,791.44	71.36
70 Other Instructional Pgms	88,063	5,926.94	59,026.68	14,505.46	14,530.86	83.50
80 Community Services	81,219	.00	.00	0.00	81,219.00	0.00
90 Support Services	7,582,384	628,128.59	5,498,234.76	1,111,845.52	972,303.72	87.18
Total EXPENDITURES	33,813,106	2,726,801.41	23,866,369.33	6,223,948.78	3,722,787.89	88.99
C. OTHER FIN. USES TRANS. OUT (GL 536)	0	.00	.00			
D. OTHER FINANCING USES (GL 535)	0	.00	.00			
E. EXCESS OF REVENUES/OTHER FIN.SOURCES OVER(UNDER)EXP/OTH FIN USES (A-B-C-D)	393,049-	302,611.45-	1,518,587.04		1,911,636.04	486.36-
F. TOTAL BEGINNING FUND BALANCE	2,665,000		3,183,457.04			
G. G/L 898 PRIOR YEAR ADJUSTMENTS(+OR-)	XXXXXXXXXX		.00			
H. TOTAL ENDING FUND BALANCE (E+F + OR - G)	2,271,951		4,702,044.08			
I. ENDING FUND BALANCE ACCOUNTS:						
G/L 810 Restricted For Other Items	0		.00			
G/L 815 Restrict Unequalized Deduct Rev	0		.00			
G/L 821 Restrictd for Carryover	83,000		125,989.61			
G/L 825 Restricted for Skills Center	0		.00			
G/L 828 Restricted for C/O of FS Rev	0		.00			
G/L 830 RESERVE FOR DEBT	0		.00			
G/L 835 Restrictd For Arbitrage Rebate	0		.00			
G/L 840 Nonspnd FB - Invent/Prepd Itms	66,000		69,712.31			
G/L 845 Restricted for Self-Insurance	0		.00			
G/L 850 Restricted for Uninsured Risks	0		.00			
G/L 870 Committed to Other Purposes	0		.00			
G/L 872 Committd to Econmc Stabilizatr	0		.00			
G/L 875 Assigned Contingencies	0		.00			
G/L 884 Assigned to Other Cap Projects	0		.00			
G/L 888 Assigned to Other Purposes	0		.00			
G/L 890 Unassigned Fund Balance	2,122,951		4,506,342.16			
G/L 891 Unassigned Min Fnd Bal Policy	0		.00			
TOTAL	2,271,951		4,702,044.08			

PROSSER SCHOOL DISTRICT NO.116
Balance Sheet
General Fund (10)
May 31, 2017

GL	Description	Balance
200	Imprest Cash	10,000.00
230	Cash on Hand	0.00
240	Cash on Deposit with County	5,715,021.91
241	Warrants Outstanding	-1,185,444.95
310	Taxes Receivable	0.00
320	Due from Other Funds	150.00
330	Due from Other Govt Units	155,885.10
340	Accounts Receivable	1,774.11
420	Inventory-Lunchrooms	5,466.05
430	Prepaid Items	0.00
450	Investments	0.00
---	Asset	4,702,852.22
601	Accounts Payable	-361.13
605	Accrued Salaries	0.00
610	Payroll Ded and Taxes Payable	0.00
640	Due to Other Funds	-447.01
750	Unavailable Revenue	0.00
760	Unavailable Taxes Receivable	0.00
---	Liability	-808.14
821	Restricted for C/O Revenues	-125,989.61
840	Nonspendable Fund Balance	-69,712.31
890	Unassigned Fund Balance	-4,506,342.16
---	Equity	-4,702,044.08
---	General Fund	0.00

PROSSER SCHOOL DISTRICT NO. 116
Expenditures by Object - Comparative
May 2017

		2015-16			2016-17			
		May YTD	Y.E. Actual	YTD Expend as a % of Y.E.	May YTD	Budget	YTD Expend as a % of Bud	
0	Debit Transfer	\$89,500	\$150,104	59.62%	\$88,713	\$165,046	53.75%	
1	Credit Transfer	(89,500)	(150,104)	59.62%	(88,713)	(165,046)	53.75%	
2	Salaries - Certificated	9,830,527	13,392,893	73.40%	9,650,267	13,260,184	72.78%	
3	Salaries - Classified	4,226,289	5,597,538	75.50%	4,422,186	5,807,764	76.14%	
4	Employee Benefits	5,857,582	7,864,848	74.48%	5,898,740	8,328,591	70.83%	
5	Supplies	1,480,413	2,458,004	60.23%	1,359,999	2,575,929	52.80%	
7	Contract Services	2,138,825	2,793,136	76.57%	2,421,924	3,646,099	66.43%	*
8	Travel	72,424	120,644	60.03%	95,489	68,275	139.86%	
9	Capital Outlay	26,728	195,130	13.70%	17,763	126,264	14.07%	
		<u>\$23,632,788</u>	<u>\$32,422,193</u>	<u>72.89%</u>	<u>\$23,866,369</u>	<u>\$33,813,106</u>	<u>70.58%</u>	

* Object 7 Contract Services - Budget includes Grant Reserve of \$650,000
Without these reserves the YTD % would be 80.8%

PROSSER SCHOOL DISTRICT NO. 116
Expenditures by Program - Comparative
May 2017

		2015-16			2016-17			
		May YTD	Y.E. Actual	YTD Expend as a % of Y.E.	May YTD	Budget	YTD Expend as a % of Bud	
01	Basic Education	\$13,016,499	\$17,477,707	74.47%	\$12,826,544	\$17,756,543	72.24%	
21	Special Ed, State	2,136,756	2,816,951	75.85%	2,292,333	2,977,193	77.00%	
22	Special Ed. Infants & Tdlrs	76,775	133,040	57.71%	67,819	161,306	42.04%	
24	Special Ed, Fed	353,675	536,901	65.87%	313,643	518,679	60.47%	
31	Vocational, State	766,624	1,133,765	67.62%	822,448	1,066,355	77.13%	
38	Vocational, Fed	2,750	21,042	13.07%	0	20,788	0.00%	
51	Title I Part A	413,215	594,500	69.51%	508,459	697,359	72.91%	
52	Sch Im Fed	50,194	81,909	61.28%	89,648	90,511	99.05%	
53	Migrant, Fed	232,690	411,773	56.51%	211,547	377,112	56.10%	
55	Learning Assistance	646,991	885,187	73.09%	664,226	869,457	76.40%	
58	Special & Pilot Prgm	9,402	189,922	4.95%	19,019	203,419	9.35%	TPEP, National Cert Bonus
58	Grant Contingency	0	0	0.00%	0	650,000	0.00%	
64	Ltd English Proficiency	64,257	129,321	49.69%	57,472	89,123	64.49%	
65	Transit. Biling., State	451,332	629,560	71.69%	435,948	583,594	74.70%	
71	Traffic Safety	34,241	50,487	67.82%	36,501	56,497	64.61%	
74	Highly Capable	20,383	26,552	76.77%	19,305	26,566	72.67%	
79	Other Instuct.	944	10,945	8.63%	3,220	5,000	64.40%	GEARUP (all reimbursed)
89	Other Community Service	0	41,706	0.00%	0	81,219	0.00%	Summer Food Service Program, Year End Transportation Adjustment
97	District-Wide Support	3,457,916	4,785,219	72.26%	3,614,910	4,927,116	73.37%	
98	Food Service	973,264	1,288,917	75.51%	941,540	1,354,617	69.51%	
99	Pupil Transportation	924,879	1,176,792	78.59%	941,784	1,300,651	72.41%	
		<u>\$23,632,788</u>	<u>\$32,422,193</u>	<u>72.89%</u>	<u>\$23,866,369</u>	<u>\$33,813,106</u>	<u>70.58%</u>	

PROSSER SCHOOL DISTRICT NO. 116
Expenditures by Activity - Comparative
May 2017

		2015-16			2016-17			
		May YTD	Y.E. Actual	YTD Expend as a % of Y.E.	May YTD	Budget	YTD Expend as a % of Bud	
11	Board - Supplies	\$53	\$828	6.45%	\$2,782	\$700	397.37%	Mugs, name badges, nameplates, lanyards \$690, Business cards \$446, Community awards, bond mtg. & gifts \$622, Speaker Stands \$153, Reference Books \$500, Plaques \$371
11	Board - Legal fees	64,218	75,101	85.51%	77,351	60,000	128.92%	
11	Board - Audit, bargaining, elections, etc.	30,152	45,077	66.89%	53,996	73,500	73.46%	WSSDA Conference \$9,985, Paperless Docs Subscription \$2,047, Legislative Assembly Registration \$220, NSBA Conference Cancellation Fee \$625, Bond brochures, mailing & election fees \$14,999, Voter Guide \$1,500, Audit Fees \$24,404, SRO OT for meetings \$216
11	Board - Travel	4,453	4,453	100.00%	3,779	4,000	94.49%	
12	Superintendent's Office	224,346	360,813	62.18%	250,802	359,229	69.82%	
13	Business Office	386,070	578,032	66.79%	418,998	587,482	71.32%	
14	Human Resources	41,668	73,661	56.57%	59,301	73,835	80.32%	
15	Communications Consultant	2,500	2,500	100.00%	0	0	0.00%	
21	Supervision	498,757	780,939	63.87%	644,523	762,139	84.57%	
22	Learning Resources	189,976	286,950	66.21%	212,561	310,721	68.41%	
23	Principal	1,491,644	2,323,826	64.19%	1,700,928	2,372,242	71.70%	
24	Guidance & Counseling	527,195	782,119	67.41%	686,746	853,071	80.50%	
25	Pupil Management/Safety	179,159	364,539	49.15%	275,819	376,091	73.34%	
26	Health Services	842,867	1,245,862	67.65%	981,343	1,372,837	71.48%	
27	Teaching	11,417,442	17,862,959	64.64%	12,653,868	18,161,046	69.68%	Budget includes \$650,000 grant reserve
28	Extracurricular	391,027	514,190	76.05%	452,562	614,962	73.59%	
31	Professional Development	713,548	1,115,254	63.98%	722,197	921,894	78.34%	
32	Instructional Technology	17,429	17,429	100.00%	17,301	17,658	97.98%	Technology Resource Teachers
33	Curriculum	12,218	48,829	25.02%	24,754	416,928	5.94%	
41	Food Service Supervision	42,396	64,250	65.99%	66,071	67,214	98.30%	
42	Food	364,615	577,109	63.18%	386,949	666,500	58.06%	
44	Food Service Operations	445,484	702,293	63.43%	491,647	738,719	66.55%	
49	Food Service Transfers	0	(25,315)	0.00%	0	(61,596)	0.00%	
51	Transportation Supervision	98,100	143,963	68.14%	112,966	144,630	78.11%	
52	Operating Buses	572,141	846,529	67.59%	678,466	971,137	69.86%	
53	Maintenance of Buses	181,845	269,403	67.50%	195,002	237,246	82.19%	
56	Transportation Insurance	40,508	40,974	98.86%	41,831	46,000	90.94%	
59	Transportation Transfers	(79,678)	(124,017)	64.25%	(87,954)	(103,450)	85.02%	
61	Maintenance Supervision	78,295	117,862	66.43%	91,418	119,561	76.46%	
62	Maintenance-Grounds	167,924	275,565	60.94%	184,288	232,948	79.11%	
63	Plant Operations-Custodial	726,459	1,119,727	64.88%	887,166	1,171,184	75.75%	
64	Maint Plant/Equipment	236,938	442,973	53.49%	244,522	473,043	51.69%	
65	Utilities	414,223	642,032	64.52%	477,278	728,000	65.56%	
68	Insurance	195,974	195,974	100.00%	202,245	215,000	94.07%	
72	Technology - Salary/Benefits	173,920	263,555	65.99%	204,075	272,079	75.01%	
72	Technology - Supplies	145,379	202,097	71.94%	194,664	208,800	93.23%	
72	Technology - Contract Services	98,295	139,739	70.34%	96,581	137,100	70.45%	
72	Technology - Travel	5,183	5,566	93.12%	5,177	4,000	129.42%	
72	Technology - Capital Outlay	0	0	0.00%	0	26,264	0.00%	
72	Technology - ERATE	61,385	164,846	37.24%	98,678	107,391	91.89%	
73	Printing	42,215	60,840	69.39%	46,896	60,000	78.16%	
75	District Motor Pool	8,921	12,864	69.35%	8,792	13,000	67.63%	
		<u>\$21,055,243</u>	<u>\$32,422,193</u>	<u>64.94%</u>	<u>\$23,866,369</u>	<u>\$33,813,106</u>	<u>70.58%</u>	

PROSSER SCHOOL DISTRICT NO.116

2016-2017 Budget Status Report

20--Capital Projects-- FUND BALANCE -- AGENCY ACCOUNTS -- Revised -- BUDGET-STATUS-REPORT

Fiscal Year 2016 (September 1, 2016 - August 31, 2017)

For the PROSSER SCHOOL DISTRICT NO.116 School District for the Month of May, 2017

	ANNUAL BUDGET	ACTUAL FOR MONTH	ACTUAL FOR YEAR	ENCUMBRANCES	BALANCE	PERCENT
A. REVENUES/OTHER FIN. SOURCES						
1000 Local Taxes	0	.00	.00		.00	0.00
2000 Local Support Nontax	12,010	405.87	8,487.57		3,522.43	70.67
3000 State, General Purpose	0	.00	.00		.00	0.00
4000 State, Special Purpose	0	.00	.00		.00	0.00
5000 Federal, General Purpose	0	.00	.00		.00	0.00
6000 Federal, Special Purpose	0	.00	.00		.00	0.00
7000 Revenues Fr Oth Sch Dist	0	.00	.00		.00	0.00
8000 Other Agencies and Associates	0	.00	.00		.00	0.00
9000 Other Financing Sources	0	.00	.00		.00	0.00
<u>Total REVENUES/OTHER FIN. SOURCES</u>	12,010	405.87	8,487.57		3,522.43	70.67
 B. EXPENDITURES						
10 Sites	0	.00	.00	0.00	.00	0.00
20 Buildings	0	8,987.21	9,154.22	0.00	9,154.22-	0.00
30 Equipment	12,000	.00	1,085.83	0.00	10,914.17	9.05
40 Energy	0	.00	.00	0.00	.00	0.00
50 Sales & Lease Expenditure	0	.00	.00	0.00	.00	0.00
60 Bond Issuance Expenditure	0	100.00	100.00	0.00	100.00-	0.00
90 Debt	0	.00	.00	0.00	.00	0.00
<u>Total EXPENDITURES</u>	12,000	9,087.21	10,340.05	0.00	1,659.95	86.17
 C. OTHER FIN. USES TRANS. OUT (GL 536)	0	.00	.00			
D. OTHER FINANCING USES (GL 535)	0	.00	.00			
E. EXCESS OF REVENUES/OTHER FIN.SOURCES						
OVER(UNDER)EXP/OTH FIN USES (A-B-C-D)	10	8,681.34-	1,852.48-		1,862.48-	< 1000-
 F. TOTAL BEGINNING FUND BALANCE	50		62.04			
 G. G/L 898 PRIOR YEAR ADJUSTMENTS(+OR-)	XXXXXXXXX		.00			
 H. TOTAL ENDING FUND BALANCE	60		1,790.44-			
(E+F + OR - G)						
I. ENDING FUND BALANCE ACCOUNTS:						
G/L 810 Restricted For Other Items	0		.00			
G/L 825 Restricted for Skills Center	0		.00			
G/L 830 Restricted for Debt Service	0		.00			
G/L 835 Restrictd For Arbitrage Rebate	0		.00			
G/L 840 Nonspnd FB - Invent/Prepd Itms	0		.00			
G/L 850 Restricted for Uninsured Risks	0		.00			
G/L 861 Restricted from Bond Proceeds	0		9,254.22-			
G/L 862 Committed from Levy Proceeds	0		.00			
G/L 863 Restricted from State Proceeds	0		.00			
G/L 864 Restricted from Fed Proceeds	0		.00			
G/L 865 Restricted from Other Proceeds	0		1,023.79-			
G/L 866 Restrictd from Impact Proceeds	0		.00			
G/L 867 Restricted from Mitigation Fees	0		.00			
G/L 869 Restricted fr Undistr Proceeds	0		.00			
G/L 870 Committed to Other Purposes	0		.00			
G/L 889 Assigned to Fund Purposes	60		8,487.57			
G/L 890 Unassigned Fund Balance	0		.00			
<u>TOTAL</u>	60		1,790.44-			

PROSSER SCHOOL DISTRICT NO.116
Balance Sheet
Capital Projects Fund (20)
May 31, 2017

<u>GL</u>	<u>Description</u>	<u>Balance</u>
230	Cash on Hand	0.00
240	Cash on Deposit with County	7,196.77
241	Warrants Outstanding	-8,987.21
450	Investments	0.00
---	Asset	-1,790.44
601	Accounts Payable	0.00
640	Due To Other Funds	0.00
---	Liability	0.00
861	Restricted from Bond Proceeds	9,254.22
865	Restricted from Other Proceeds	1,023.79
889	Assigned to Fund Purposes	-8,487.57
---	Equity	1,790.44
---	Capital Projects	0.00

PROSSER SCHOOL DISTRICT NO.116

2016-2017 Budget Status Report

30--Debt Service Fund-- FUND BALANCE -- AGENCY ACCOUNTS -- Revised -- BUDGET-STATUS-REPORT

Fiscal Year 2016 (September 1, 2016 - August 31, 2017)

For the PROSSER SCHOOL DISTRICT NO.116 School District for the Month of May, 2017

	ANNUAL BUDGET	ACTUAL FOR MONTH	ACTUAL FOR YEAR	ENCUMBRANCES	BALANCE	PERCENT
A. REVENUES/OTHER FIN. SOURCES						
1000 Local Taxes	0	.00	4.58		4.58-	0.00
2000 Local Support Nontax	2,400	662.26	4,840.96		2,440.96-	201.71
3000 State, General Purpose	0	.00	.00		.00	0.00
5000 Federal, General Purpose	0	.00	.00		.00	0.00
9000 Other Financing Sources	0	25,900.00	25,900.00		25,900.00-	0.00
<u>Total REVENUES/OTHER FIN. SOURCES</u>	2,400	26,562.26	30,745.54		28,345.54-	> 1000
B. EXPENDITURES						
Matured Bond Expenditures	0	.00	.00	0.00	.00	0.00
Interest On Bonds	0	.00	.00	0.00	.00	0.00
Interfund Loan Interest	0	.00	.00	0.00	.00	0.00
Bond Transfer Fees	0	.00	.00	0.00	.00	0.00
Arbitrage Rebate	0	.00	.00	0.00	.00	0.00
Underwriter's Fees	0	.00	.00	0.00	.00	0.00
<u>Total EXPENDITURES</u>	0	.00	.00	0.00	.00	0.00
C. <u>OTHER FIN. USES TRANS. OUT (GL 536)</u>	0	.00	.00			
D. <u>OTHER FINANCING USES (GL 535)</u>	0	.00	.00			
E. <u>EXCESS OF REVENUES/OTHER FIN.SOURCES</u> <u>OVER (UNDER) EXPENDITURES (A-B-C-D)</u>	2,400	26,562.26	30,745.54		28,345.54	> 1000
F. <u>TOTAL BEGINNING FUND BALANCE</u>	922,548		922,813.32			
G. <u>G/L 898 PRIOR YEAR ADJUSTMENTS(+OR-)</u>	XXXXXXXXX		.00			
H. <u>TOTAL ENDING FUND BALANCE</u> <u>(E+F + OR - G)</u>	924,948		953,558.86			
I. <u>ENDING FUND BALANCE ACCOUNTS:</u>						
G/L 810 Restricted for Other Items	0		.00			
G/L 830 Restricted for Debt Service	924,948		953,558.86			
G/L 835 Restrictd For Arbitrage Rebate	0		.00			
G/L 870 Committed to Other Purposes	0		.00			
G/L 889 Assigned to Fund Purposes	0		.00			
G/L 890 Unassigned Fund Balance	0		.00			
<u>TOTAL</u>	924,948		953,558.86			

PROSSER SCHOOL DISTRICT NO.116
Balance Sheet
Debt Service Fund (30)
May 31, 2017

<u>GL</u>	<u>Description</u>	<u>Balance</u>
240	Cash on Deposit with County	953,558.86
310	Taxes Receivable	6,089.65
450	Investments	0.00
---	Asset	959,648.51
760	Unavailable Taxes Receivable	-6,089.65
---	Liability	-6,089.65
830	Restricted for Debt Service	-953,558.86
---	Equity	-953,558.86
---	Debt Service Fund	0.00

PROSSER SCHOOL DISTRICT NO.116

2016-2017 Budget Status Report

40--Associated Student Body Fund-- FUND BALANCE -- AGENCY ACCOUNTS -- Revised -- BUDGET-STATUS-REPORT

Fiscal Year 2016 (September 1, 2016 - August 31, 2017)

For the PROSSER SCHOOL DISTRICT NO.116 School District for the Month of May, 2017

	ANNUAL BUDGET	ACTUAL FOR MONTH	ACTUAL FOR YEAR	ENCUMBRANCES	BALANCE	PERCENT
A. REVENUES						
1000 General Student Body	116,619	3,131.18	95,496.68		21,122.32	81.89
2000 Athletics	281,164	4,051.16	117,277.05		163,886.95	41.71
3000 Classes	50,322	2,968.29	30,282.47		20,039.53	60.18
4000 Clubs	322,410	21,506.88	129,707.80		192,702.20	40.23
6000 Private Moneys	34,900	111.73	16,901.69		17,998.31	48.43
<u>Total REVENUES</u>	805,415	31,769.24	389,665.69		415,749.31	48.38
B. EXPENDITURES						
1000 General Student Body	111,033	865.07	70,906.46	8,809.10	31,317.44	71.79
2000 Athletics	252,405	6,741.86	101,251.83	30,343.15	120,810.02	52.14
3000 Classes	43,442	285.36	13,246.96	7,815.02	22,380.02	48.48
4000 Clubs	325,276	43,103.53	124,008.69	36,156.18	165,111.13	49.24
6000 Private Moneys	37,401	30.00	16,616.66	0.00	20,784.34	44.43
<u>Total EXPENDITURES</u>	769,557	51,025.82	326,030.60	83,123.45	360,402.95	53.17
C. <u>EXCESS OF REVENUES</u>						
<u>OVER (UNDER) EXPENDITURES</u> (A-B)	35,858	19,256.58-	63,635.09		27,777.09	77.46
D. <u>TOTAL BEGINNING FUND BALANCE</u>	315,127		278,788.03			
E. <u>G/L 898 PRIOR YEAR ADJUSTMENTS(+OR-)</u>	XXXXXXXXX		.00			
F. <u>TOTAL ENDING FUND BALANCE</u>	350,985		342,423.12			
<u>C+D + OR - E)</u>						
G. <u>ENDING FUND BALANCE ACCOUNTS:</u>						
G/L 810 Restricted for Other Items	0		.00			
G/L 819 Restricted for Fund Purposes	350,985		342,423.12			
G/L 840 Nonspnd FB - Invent/Prepd Itms	0		.00			
G/L 850 Restricted for Uninsured Risks	0		.00			
G/L 870 Committed to Other Purposes	0		.00			
G/L 889 Assigned to Fund Purposes	0		.00			
G/L 890 Unassigned Fund Balance	0		.00			
<u>TOTAL</u>	350,985		342,423.12			

PROSSER SCHOOL DISTRICT NO.116
Balance Sheet
Associated Student Body Fund (40)
May 31, 2017

GL	Description	Balance
200	Imprest Cash	32,000.00
230	Cash on Hand	0.00
240	Cash on Deposit with County	346,736.24
241	Warrants Outstanding	-36,496.05
320	Due from Other Funds	447.01
430	Prepaid Items	0.00
450	Investments	0.00
---	Asset	342,687.20
601	Accounts Payable	-114.08
640	Due To Other Funds	-150.00
750	Unavailable Revenue	0.00
---	Liability	-264.08
819	Restricted for Fund Purposes	-342,423.12
840	Nonspendable Fund Balance	0.00
---	Equity	-342,423.12
---	Associated Student Body Fund	0.00

PROSSER SCHOOL DISTRICT NO.116

2016-2017 Budget Status Report

90--Transportation Vehicle Fund-- FUND BALANCE -- AGENCY ACCOUNTS -- Revised -- BUDGET-STATUS-REPORT

Fiscal Year 2016 (September 1, 2016 - August 31, 2017)

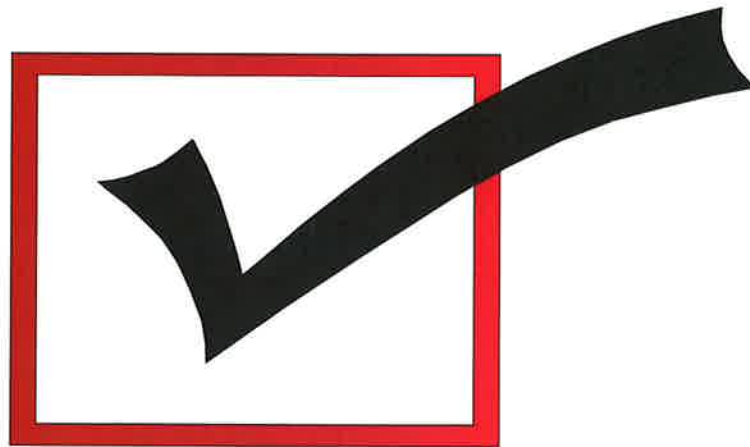
For the PROSSER SCHOOL DISTRICT NO.116 School District for the Month of May, 2017

	ANNUAL BUDGET	ACTUAL FOR MONTH	ACTUAL FOR YEAR	ENCUMBRANCES	BALANCE	PERCENT
A. REVENUES/OTHER FIN. SOURCES						
1000 Local Taxes	0	.00	.00		.00	0.00
2000 Local Nontax	200	218.82	1,590.83		1,390.83-	795.42
3000 State, General Purpose	0	.00	.00		.00	0.00
4000 State, Special Purpose	170,000	.00	.00		170,000.00	0.00
5000 Federal, General Purpose	0	.00	.00		.00	0.00
8000 Other Agencies and Associates	0	.00	.00		.00	0.00
9000 Other Financing Sources	0	.00	.00		.00	0.00
A. <u>TOTAL REV/OTHER FIN.SRCS(LESS TRANS)</u>	170,200	218.82	1,590.83		168,609.17	0.93
B. <u>9900 TRANSFERS IN FROM GF</u>	0	.00	.00		.00	0.00
C. <u>Total REV./OTHER FIN. SOURCES</u>	170,200	218.82	1,590.83		168,609.17	0.93
D. <u>EXPENDITURES</u>						
Type 30 Equipment	250,000	.00	242,770.80	0.00	7,229.20	97.11
Type 60 Bond Levy Issuance	0	.00	.00	0.00	.00	0.00
Type 90 Debt	0	.00	.00	0.00	.00	0.00
<u>Total EXPENDITURES</u>	250,000	.00	242,770.80	0.00	7,229.20	97.11
E. <u>OTHER FIN. USES TRANS. OUT (GL 536)</u>	0	25,900.00	25,900.00			
F. <u>OTHER FINANCING USES (GL 535)</u>	0	.00	.00			
G. <u>EXCESS OF REVENUES/OTHER FIN SOURCES</u> <u>OVER(UNDER)EXP/OTH FIN USES (C-D-E-F)</u>	79,800-	25,681.18-	267,079.97-		187,279.97-	234.69
H. <u>TOTAL BEGINNING FUND BALANCE</u>	304,923		304,926.15			
I. <u>G/L 898 PRIOR YEAR ADJUSTMENTS(+OR-)</u>	XXXXXXXXX		.00			
J. <u>TOTAL ENDING FUND BALANCE</u> <u>(G+H + OR - I)</u>	225,123		37,846.18			
K. <u>ENDING FUND BALANCE ACCOUNTS:</u>						
G/L 810 Restricted For Other Items	0		.00			
G/L 819 Restricted for Fund Purposes	225,123		63,746.18			
G/L 830 Restricted for Debt Service	0		.00			
G/L 835 Restrictd For Arbitrage Rebate	0		.00			
G/L 850 Restricted for Uninsured Risks	0		.00			
G/L 889 Assigned to Fund Purposes	0		.00			
G/L 890 Unassigned Fund Balance	0		25,900.00-			
<u>TOTAL</u>	225,123		37,846.18			

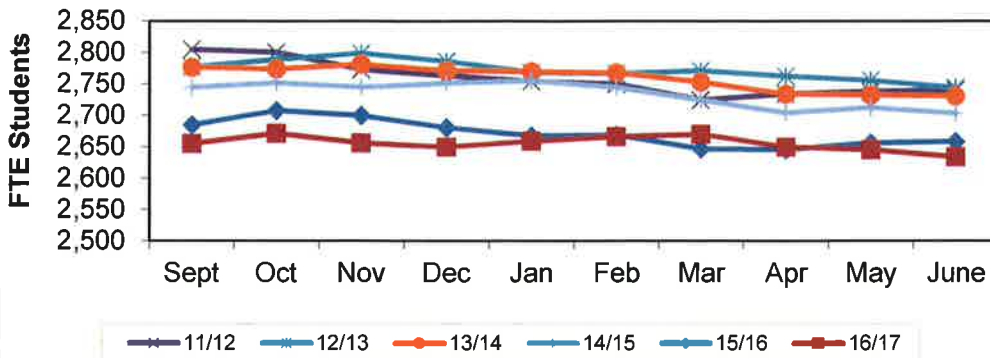
PROSSER SCHOOL DISTRICT NO.116
Balance Sheet
Transportation Vehicle Fund (90)
May 31, 2017

<u>GL</u>	<u>Description</u>	<u>Balance</u>
240	Cash on Deposit with County	280,616.18
241	Warrants Outstanding	0.00
450	Investments	0.00
---	Asset	280,616.18
601	Accounts Payable	0.00
606	Anticipation Notes Payable	-242,770.00
---	Liability	-242,770.00
819	Restricted for Fund Purposes	-63,746.18
890	Unassigned Fund Balance	25,900.00
---	Equity	-37,846.18
---	Transportation Vehicle Fund	0.00

Student Enrollment for June 2017



District Monthly Enrollment from 11/12 to 16/17

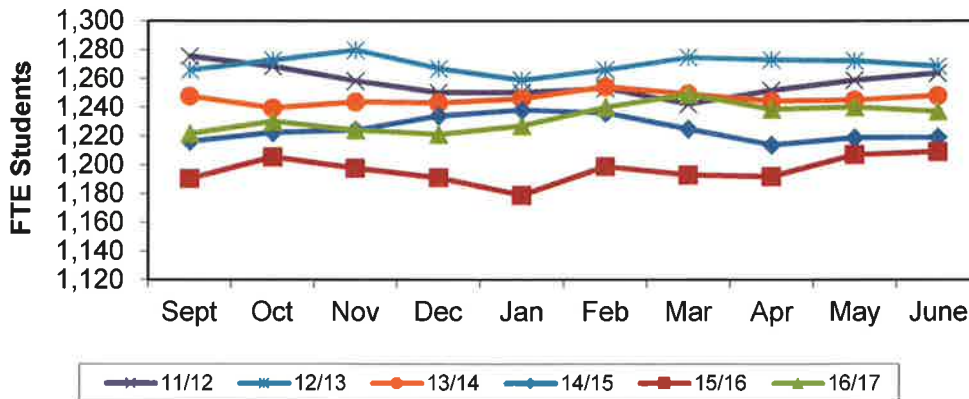


	Sept	Oct	Nov	Dec	Jan	Feb	Mar	Apr	May	June	Average
11/12	2,805	2,801	2,773	2,764	2,755	2,750	2,725	2,735	2,739	2,741	2,759
12/13	2,777	2,790	2,799	2,787	2,769	2,767	2,772	2,763	2,756	2,744	2,772
13/14	2,777	2,774	2,782	2,772	2,771	2,769	2,753	2,735	2,733	2,731	2,760
14/15	2,745	2,752	2,745	2,752	2,756	2,745	2,725	2,705	2,713	2,703	2,734
15/16	2,685	2,708	2,700	2,681	2,668	2,669	2,647	2,646	2,657	2,658	2,672
16/17	2,656	2,672	2,657	2,651	2,660	2,667	2,671	2,650	2,646	2,634	2,656

16/17 budget
(Under) Over

2,605
51

Elementary Enrollment from 11/12 to 16/17

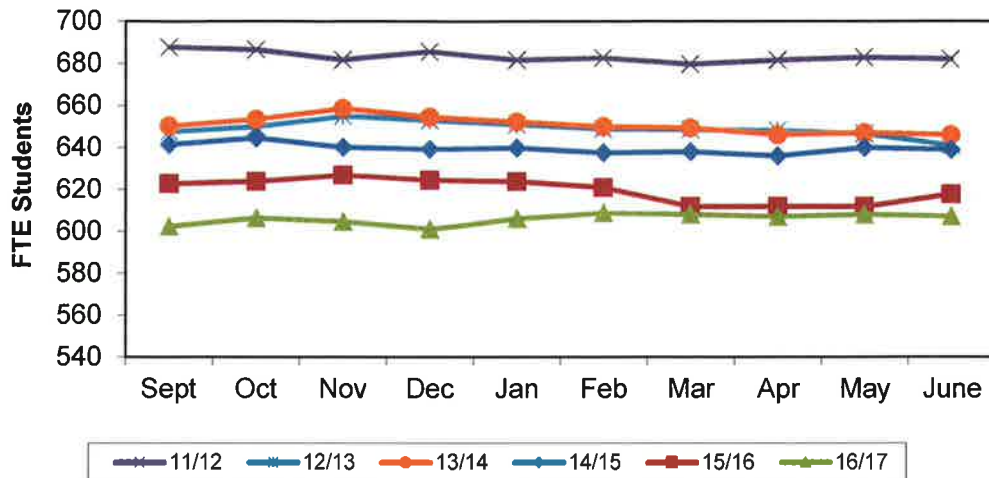


	Sept	Oct	Nov	Dec	Jan	Feb	Mar	Apr	May	June	Average
11/12	1,276	1,268	1,258	1,250	1,250	1,253	1,242	1,252	1,259	1,264	1,257
12/13	1,266	1,273	1,280	1,267	1,259	1,266	1,275	1,273	1,273	1,269	1,270
13/14	1,248	1,240	1,244	1,243	1,246	1,254	1,249	1,244	1,245	1,248	1,246
14/15	1,217	1,223	1,224	1,234	1,238	1,236	1,225	1,214	1,219	1,219	1,225
15/16	1,191	1,206	1,198	1,191	1,179	1,199	1,193	1,192	1,207	1,209	1,196
16/17	1,222	1,230	1,224	1,221	1,227	1,240	1,249	1,239	1,240	1,237	1,233

16/17 Bud
(Under) Over

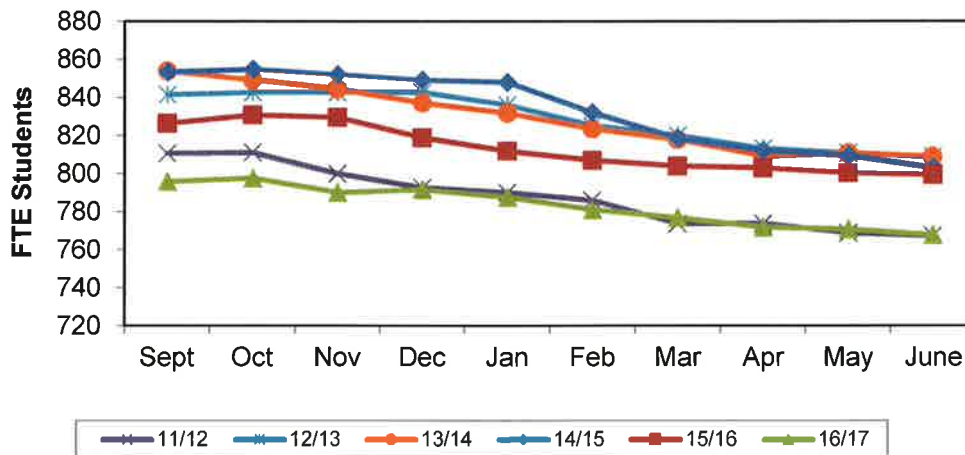
1,190
43

HMS Enrollment from 11/12 to 16/17



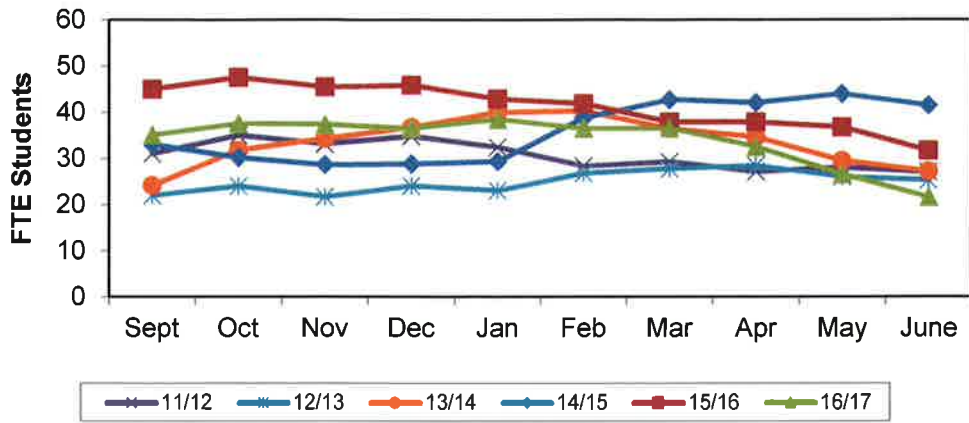
	Sept	Oct	Nov	Dec	Jan	Feb	Mar	Apr	May	June	Average
11/12	688	687	682	686	682	683	680	682	683	682	683
12/13	648	650	655	653	651	649	649	648	647	641	649
13/14	651	654	659	655	652	650	649	646	647	646	651
14/15	642	645	640	639	640	638	638	636	640	639	640
15/16	623	624	627	625	624	621	612	612	612	618	620
16/17	603	606	605	601	606	609	608	607	608	607	606
16/17 Bud											582
(Under) Over											24

PHS Enrollment from 11/12 to 16/17



	Sept	Oct	Nov	Dec	Jan	Feb	Mar	Apr	May	June	Average
11/12	811	811	800	793	790	786	774	774	769	767	787
12/13	842	843	843	843	836	825	820	813	811	809	829
13/14	854	849	844	837	832	824	818	809	811	809	829
14/15	853	855	852	849	848	832	819	812	810	803	833
15/16	826	831	830	819	812	807	804	803	801	800	813
16/17	796	798	790	792	788	781	777	772	771	768	783
16/17 Bud											797
(Under) Over											(14)

Prosser Falls Enrollment from 11/12 to 16/17



	Sept	Oct	Nov	Dec	Jan	Feb	Mar	Apr	May	June	Average	
11/12	31	35	33	35	33	28	29	27	28	27	31	
12/13	22	24	22	24	23	27	28	28	26	25	25	
13/14	24	32	34	37	40	40	37	35	30	27	34	
14/15	33	30	29	29	29	39	43	42	44	42	36	
15/16	45	48	46	46	43	42	38	38	37	32	41	
16/17	35	38	37	37	39	36	37	33	27	22	34	*
16/17 Bud											36	
(Under) Over											(2)	

* not including students in the after school credit retrieval program

BOARD PACKET

TO: Board of Directors
SUBJECT: Certificated Personnel
AGENDA: Consent
DATE: June 27, 2017
PREPARED BY: Dr. Ray Tolcacher, Superintendent

Certificated Employees

Jodi Sabin has been recommended as an Extended School Year summer school teacher.

Lisa Castillo has been recommended as an Extended School Year summer school teacher.

Joann Schnellbach has been recommended as a summer school intensive reading teacher.

Crystal Thomas has been recommended as a Pk-5 migrant summer school teacher.

Ann Sipe has been recommended as the summer school intensive reading program supervisor.

Lisa Ancock has been recommended as a school psychologist for the 2017/18 school year.

Camille Klingele has been recommended as an art teacher at Prosser Heights Elementary for the 2017/18 school year.

Lacey Steffey has been recommended as a second grade teacher at Keene-Riverview Elementary for the 2017/18 school year.

James Hatch has submitted a letter of resignation from his position as a math teacher at Housel Middle School.

Bethany Riddle has submitted a letter of resignation from her position as an assistant volleyball coach at Housel Middle School.

Wendy Rodriguez has submitted a letter of resignation from her position as a volleyball coach at Housel Middle School.

Leonor de Maldonado has been recommended as the Migrant/Bilingual Coordinator. She will begin her employment on July 1, 2017.

BOARD PACKET

TO: Board of Directors
SUBJECT: **Classified Personnel**
AGENDA: **Consent**
DATE: June 27, 2017
PREPARED BY: Craig Reynolds, *Business Manager*

CLASSIFIED EMPLOYEES

Maria Hernandez and **Marisela Acosta** have been hired as paraeducators for the Pre-K Bilingual Migrant Summer School.

Liz Vigil has been hired as the Summer School Intensive Reading Paraeducator.

Kathy Karthauser has notified the District she is retiring. She will not be returning for the 17/18 school year.

Special Board Meeting June 12, 2017

A Special Meeting of the Board of Directors of Prosser School District was called to order at 5:00 p.m. by Peggy S. Douglas, President. Other Board members present included Andy Howe, Jesalyn Cole, Scotty Hunt and Scott Coleman. The meeting was held in the District Administration Office, 1126 Meade Avenue, Suite A, Prosser, WA.

The purpose of the Special Meeting was to discuss the Superintendent's evaluation. – RCW 42.30.110 (1) (g).

President Douglas immediately adjourned into Executive Session. The meeting was expected to last 2 hours.

ADJOURNMENT:

The Executive Session adjourned at 6:54 p.m.

Clerk to the Board

Board President

Secretary to the Clerk of the Board

Board Meeting June 13, 2017

A Study Session of the Prosser School District Board of Directors was called to order at 6:05 p.m. by Peggy S. Douglas, President. Other Board members in attendance were Andy Howe, Scotty Hunt, Jesalyn Cole and Scott Coleman. Also in attendance were Dr. Ray Tolcacher, Superintendent; Craig Reynolds, Business Manager and Julie Hyatt, Secretary. Several staff members were also in attendance. The Study Session was held at Keene-Riverview Elementary MPR, 832 Park Avenue. The purpose of the Study Session was for the Board to receive an architect and construction management update.

Dax Logsdon, project manager and Ed Champagne, architect addressed the Board on the next steps in the construction management process.

The Board members also contributed to the discussion, saying how important it is for all of them to be as involved as possible, as they view themselves as the “constant” during the transition of Dr. Tolcacher to a new Superintendent.

After discussion, it was agreed to hold a Special Board Meeting on Friday, June 16, 2017 at 6:00 p.m. at the Staff Development Room. The purpose of the Board meeting will be to review building location options on the new high school site. The architect and project manager will be in attendance at the meeting.

After discussion, it was agreed to hold two community meetings on June 27 and June 29, 2017, both at 5:30 p.m. These meetings will be held to hear community members’ opinions on the placement of buildings on the new high school site.

Kevin Lusk reported on the Ed Specs meeting which was recently held and how valuable it was for the high school staff to hear some of the specifics of the new buildings.

The Study Session concluded at 6:50 p.m.

The Regular Meeting of the Board of Directors of Prosser School District was called to order at 7:00 p.m. by Peggy S. Douglas, President. Other Board members present included Andy Howe, Scotty Hunt, Jesalyn Cole and Scott Coleman. Also present were Dr. Ray Tolcacher, Superintendent; Craig Reynolds, Business Manager; Deanna Flores, Assistant Superintendent and Julie Hyatt, Secretary. There was also an audience of school staff, media and community members. Student representative Liz Bender was also present. The Board meeting was held at Keene-Riverview Elementary MPR, 832 Park Avenue. Minutes from the May 23, 2017 regular Board meeting were presented and approved. Student representatives Ali Cox and Lacey Desserrault were both absent.

APPROVAL OF AGENDA:

Motion by Scotty Hunt, seconded by Andy Howe and motion carried unanimously to approve the revised agenda. The revision included additions to Information Items and Certificated Personnel on the Consent Agenda.

COMMUNICATIONS:

Thank you note from Walter Olmstead

President Douglas read a thank you note from 5th grader Walter Olmstead, thanking the Board for supporting the Archery Team’s participation at the national competition. She also

Board Meeting June 13, 2017

distributed photos which Walter had included in his note.

RECOGNITION:

• **2016/17 Retirees**

The Board recognized staff members who are retiring by presenting them with a plaque and thanking them for their service to our school district.

• **Student Board Representative**

The Board recognized student representative Liz Bender for serving on the school board this school year.

President Douglas called a short recess to enjoy refreshments.

INFORMATION ITEMS:

Benton County Museum Request

Don McFerran and Alys Means from the Benton County Museum made a formal follow-up to a prior written communication to the school board regarding their interest in some of the existing portable buildings at PHS, for museum use.

PTA Update

Dr. Lisa Galbraith gave the Board a report of PTA's activities and upcoming events as well as thanking the Board and the District administration for their support this past school year.

Elementary Schools Goals Update

Assistant Superintendent, Deanna Flores had included an update electronically in the Board packet on progress at our elementary schools on their yearly goals. These goals were originally presented to the Board at the beginning of the 2016-17 school year. Additional discussion will take place with principals after the Board has had time to review the information. Middle and high school data will be presented to the Board in the near future.

PROTOCOL FOR ADDRESSING BOARD:

Dr. Tolcacher read the Protocol for addressing the Board.

HEARING OF VISITORS:

• Dr. Sherri Eaton Bin-Daar - psychologist in the Prosser School District – Personnel Motion by Scotty Hunt, seconded by Andy Howe and motion carried unanimously to hold a special 15 minute Executive Session tonight immediately after the conclusion of the regular Board meeting.

President Douglas called a 5 minute recess.

• Carie LaMarsh – PSD staff member concern about school lunches

REPORTS:

Assistant Superintendent's Report

- Reported on Second Steps curriculum
- Summer School registration numbers

Board Meeting June 13, 2017

Business Manager's Report

- April 2017 Financials
- Audit Exit Conference held recently
- Reported on bond sale last week

Superintendent's Report

An update was given to the Board regarding a meeting scheduled for June 16th to review building locations on the high school site above the stadium. Additionally, the Superintendent has received some modified language from the ACLU related to the proposed policy addressing the use of social media by District staff. The recent suggested language has been sent to the District technology committee and legal counsel for review. The policy will be revisited by the Board during the summer for final approval for the 2017-18 school year.

Board Members' Reports

Scotty Hunt – No report

Jesalyn Cole – Reported on several District events which she recently attended. She enjoyed them all very much.

Peggy Douglas – Reported on the bond sale in Seattle and the very good rate for taxpayers. She enjoyed Scholarship Night very much. Mrs. Douglas is starting a monthly publication of Board President Highlights which will be published in the newspaper and on our website.

Andy Howe – Reported on a recent visit he and Scotty Hunt made to the new College Place High School. They were able to meet with administration and staff there and gathered feedback about their construction project.

Scott Coleman – Reported on several District events he had recently attended. He also recently visited with principals at the middle school and Whitstran.

President Douglas publically thanked Brenda Graham, Technology Coordinator for her service to the District.

Student Representatives' Reports

Liz Bender – No report

CONSENT ITEMS:

Motion by Scotty Hunt, seconded by Andy Howe and motion carried unanimously to approve the Consent Agenda as presented.

Certificated Personnel

Olivia Zurcher was recommended as an Ag Ed instructor at Prosser High School for the 2017/18 school year.

Mindy Howard was recommended as a math teacher at Housel Middle School for the 2017/18 school year.

Corinn Simpkins submitted a letter of resignation from her position as an art teacher at Prosser Heights Elementary School.

The following current staff members were recommended as teachers in PK-5 Migrant Summer School:

Board Meeting June 13, 2017

Linda Barnes, Melissa Bates, Fred Bray, Kipp Campbell, Maresa Fajardo, Heidi Fassler, Michelle Kenney, Mercedes Muñoz, Joann Schnellbach, Ann Sipe, Brittney Staudenmaier, Carla Wyatt and Linda Zenger-O'Brien.

The following current staff members were recommended as teachers at Housel Middle School Summer School:

Dawn Fitzgerald, Mark Little, Gilberto Muñoz, Wendy Rodriguez and Ryan Russell.

The follow current staff members were recommended as teachers in the Arts Academy Summer School:

Stephanie Ard and Kay Thiede

Jennifer Smith submitted a letter of resignation from her position as a second grade teacher at Keene-Riverview Elementary.

Classified Personnel

Mark Quinn resigned his position as an assistant girls' soccer coach at Prosser High School.

Julissa Cervantes was hired as the office assistant at Whitstran Elementary School.

Stephanie Groom was hired as the payroll officer.

Arturo Aguayo was hired as the health room/migrant records assistant for the PreK-5 Migrant Summer School.

Norma Burnett, Jessica Ibarra, Kasandra Trejo and Elizabeth Vigil were hired as paraeducators for the PreK-5 Migrant Summer School.

Elizabeth Huerta was hired as the secretary for the PreK-5 Migrant Summer School.

Rosie Brown, Maria Flores, Martha Reyes and Elvia Villanueva were hired as paraeducators for the Housel Middle School Summer School.

Kooper Blair resigned his position as a head boys' baseball coach at Housel Middle School.

Mechelle Sias was hired as a paraeducator at Keene-Riverview Elementary. Her new assignment begins with the 17/18 school year.

Approval of Minutes

Minutes from the May 23, 2017 regular Board meeting Board meeting were presented.

Contracts and Personal Service Agreements:

- 1. Marlene Hughes - Country Gardens Catering Service Agreement:
Prosser High School prom was held at Country Gardens on May 6, 2017. The cost of the venue was \$2,834.46.*

Volunteer Coaches

Kason Blair completed paperwork to be a volunteer basketball coach at Prosser High School.

Board Meeting June 13, 2017

Beverly Steinbock completed paperwork to be a volunteer coach at Prosser High School.

OLD BUSINESS:

None

ACTION ITEMS:

Vouchers

“The following vouchers as audited and certified by the auditing officers, as required by RCW 42.24.080, and those expense reimbursement claims certified, as required by RCW 42.24.090, are approved for payment.

General Fund Voucher numbers 191527 through 191670 totaling \$323,279.83

Associated Student Body Fund Voucher numbers 184941 through 184979 totaling \$55,839.45

Associated Student Body Fund Voucher numbers 184980 through 185001 totaling \$20,344.31.

Motion by Scotty Hunt, seconded by Jesalyn Cole and motion carried unanimously to approve the accounts payable vouchers, payable June 14, 2017.

Out-of-State Travel: FFA Parliamentary Procedure Team to National Competition

The Prosser FFA Parliamentary Procedure Team would like permission to travel to Indianapolis, Indiana, October 22 – 28, 2017, to compete in the National FFA Convention’s Parliamentary Procedure contest as a result of their state championship achievement in May 2017. Students traveling to nationals are: Tessa Taylor, Katelyn Greene, Eva Aarstad, Kelli Munn and Laynee Olmstead. Stephen Hayter and Travis DeVore will travel as advisors and either Denine Trump or Sandra Desserault will travel as the female chaperone. Student travel will be paid through ASB fundraising and CTE budget and adult travel will be covered by the CTE budget.

Motion by Andy Howe, seconded by Scotty Hunt and motion carried unanimously to approve the out-of-state travel request for the FFA Parliamentary Procedure Team to travel to Indianapolis, Indiana from October 22 – October 28, 2017, to compete in the national parliamentary procedure competition.

Motion by Scotty Hunt, seconded by Scott Coleman and carried unanimously to accept the following seven donations:

Donation from Yakima Legends Casino

The Prosser School District received a donation of \$1,500.00 from Yakama Legends Casino. The donation will be used for iPads and educational applications for Terri Beale’s classroom.

Donation from Yakama Legends Casino

The Prosser School District received a donation of \$1,500.00 from Yakama Legends Casino. The donation will be used for Wobble chairs and Bouncy banks for Eva Petroff’s classroom.

Donation from Northwest Farm Credit Services

The Prosser School District received a donation of \$500.00 from Northwest Farm Credit Services. The donation will be deposited into the Washington Organization of Student Historians (WOOSH) ASB account.

Board Meeting June 13, 2017

Donation from Fraternal Order of Eagles #2647

The Prosser student body has received a donation of \$500.00 from Fraternal Order of Eagles #2647. The donation will be deposited into the Washington Organization of Student Historians' (WOOSH) ASB account.

Donation from Prosser PTA

The Prosser Student Body has received a donation of \$735.00 from Prosser PTA. The donation will be deposited into the Washington Organization of Student Historians' (WOOSH) ASB account.

Donation from Love's Travel Stops

On June 8, 2017, Love's Travel Stop in Prosser had their official "Ribbon Cutting" ceremony to officially open the new addition to the Prosser community. Prior to the opening event, the corporate office of Love's contacted the school district to invite us to attend the ceremony and accept a check for \$2,000.00. Board member Scotty Hunt represented the school district at the event and received the check.

Donation from Prosser Booster Club

The Prosser Student Body has received a donation of \$7108.49 from Prosser Booster Club. The donation will be deposited into the Boys' Basketball ASB account.

Acceptance of Bids for Surplus of School Buses

Bill Petersen said that on January 24, 2017, the Board took action to surplus four school buses. Three of the buses were listed on the OSPI website for sale through our ESD Regional Transportation Coordinator for any interested public school districts. We received no responses. We then advertised in the Prosser Record Bulletin and the Giant Nickel. The fourth bus has a bad motor but is still on our depreciation schedule until November 17, 2017. After that time, we will offer it for sealed bid. Sealed bids were due on June 8, 2017 by 1:00 p.m. to the District office. We received three bids for these buses:

BIDDERS:	BUS #18	BUS #26	BUS #27
St. Francis Preparatory School	\$611.00	\$1,102.00	\$1,786.00
Juan Rojas	\$0.00	\$1,350.00	\$1,400.00
Jeff Hogue	\$250.00	\$1,600.00	\$1,600.00

High Bid for Bus #18 St. Francis Preparatory School	\$ 611.00
High Bid for Bus #26 Jeff Hogue	\$ 1,600.00
High Bid for Bus #27 St. Francis Preparatory School	\$ 1,786.00

Motion by Jesalyn Cole, seconded by Andy Howe and motion carried unanimously to accept the highest bid for these surplus buses.

Approval of Engineering Services

On March 14, 2017, the school board authorized the Superintendent to begin the process to hire a construction project surveyor and geotechnical consultant. To that end, Craig Reynolds

Board Meeting June 13, 2017

worked with our construction manager, Dax Logsdon, to develop a Request for Qualifications (RFQ) for these services as well as construction testing. The due date and time for interested firms to submit their qualifications was May 31, 2017 by 4:00 p.m. Dax has reviewed the submittals and is recommending the following firms:

Engineering Service - Topographic Survey: White Shield, Inc. (Pasco)

Engineering Service - Geotechnical Investigation: Geo Professional Innovation (Pullman, but supported from their Tri-Cities office)

Engineering Service - Construction Testing Services: Geo Professional Innovation (Pullman)

Motion by Scott Coleman, seconded by Andy Howe and motion carried unanimously to approve engineering services contracts with White Shield, Inc. for topographic survey and Geo Professional Innovation for geotechnical investigation and construction testing services.

Resolution No. 05-17: Prosser High School New-in-Lieu Replacement Option

OSPI Form D-3, which was included in the Board packet is an application for project approval for state assistance for new construction and/or modernization of a school facility. Dax Logsdon, our construction manager, requested the Superintendent sign the form for the new high school project. As part of the application, it is imperative the school board approve a Resolution stating that the existing facility will not be used for instructional purposes after the new construction is completed and that the facility will not be eligible for any future financial assistance. Dax attended the board meeting, discussed the Resolution and answered questions.

Motion by Andy Howe, seconded by Scott Coleman and motion carried unanimously to adopt Resolution No. 05-17: Prosser High School New-in-Lieu Replacement Option.

ROLL CALL: Scott Coleman, Aye; Andy Howe, Aye; Peggy S. Douglas, Aye; Jesalyn Cole, Aye; Scotty Hunt, Aye.

Resolution No. 06-17: Declaring Surplus Equipment and Supplies

A packet of obsolete or surplus equipment and supplies which the District owns was included in the Board packet. District personnel have had an opportunity to review these items for possible use in their building or departments. A surplus letter will be sent out to private and other public schools in our area notifying them of our surplus items. In accordance with RCWs, textbooks will be offered to students first. The method of disposal will be a public sale on June 24.

Motion by Andy Howe, seconded by Scotty Hunt and motion carried unanimously to adopt Resolution No. 06-17: Declaring Surplus Equipment and Supplies.

ROLL CALL: Scott Coleman, Aye; Andy Howe, Aye; Peggy S. Douglas, Aye; Jesalyn Cole, Aye; Scotty Hunt, Aye.

DISCUSSION ITEM:

Non-Resident Students

Dr. Tolcacher reported that it had been requested by the Board to review the current practice for addressing non-resident applications, admission and monitoring of students requesting to attend as well as those who currently attend Prosser School District schools. Included in the

Board Meeting June 13, 2017

Board packet was a copy of the current policy and recent Board discussions regarding non-resident student attendance.

After discussion, the Board requested research be completed regarding the newest WSSDA policy updates as well as the Superintendent to develop consistent guidelines for the policy.

ADJOURNMENT:

Motion by Andy Howe, seconded by Scott Coleman and motion carried unanimously to adjourn the meeting at 8:44 p.m.

EXECUTIVE SESSION:

President Douglas called an Executive Session to order at 8:49 p.m. The purpose of the Executive Session was to review the performance of a public employee - RCW 42.30.110 (1) (g). The Executive Session was expected to last one hour.

The Executive Session adjourned at 9:20 p.m.

FUTURE MEETINGS:

- Special Board Meeting, Review of Operational Protocols, June 14, 2017, Inn at Horse Heaven, 4:00 p.m.
- Special Board Meeting, Review of Possible Placements of Buildings for the New High School, June 16, 2017, Staff Development Room, 6:00 p.m.

Clerk to the Board

Board President

Secretary to the Clerk of the Board

Special Board Meeting June 14, 2017

A Special Meeting of the Prosser School District Board of Directors was called to order at 4:18 p.m. by Peggy S. Douglas, President. Other Board members in attendance were Andy Howe, Scotty Hunt, Jesalyn Cole and Scott Coleman. Also in attendance were Dr. Ray Tolcacher, Superintendent; Tricia Lubach and Scott Dolquist, WSSDA facilitators and Julie Hyatt, Secretary. The Special Meeting was held at the Inn at Horse Heaven, 259 Merlot Dr., Prosser, WA. The purpose of the Special Meeting was for the Board to review and update operational protocols.

INTRODUCTION OF MEETING ATTENDEES

Tricia Lubach invited everyone around the table to introduce themselves, and include a bit of their background.

REVIEW OF THE OPERATIONAL PROTOCOLS

The Board members, Dr. Tolcacher, Tricia Lubach and Scott Dolquist reviewed the results of the Online Board Self-Assessment Survey and discussed problem-solving solutions.

ADJOURNMENT:

The Board meeting was adjourned at 9:30 p.m.

FUTURE MEETINGS:

- Special Board Meeting to Review Possible Building Locations for New PHS, Staff Development Room, June 16, 2017, 6:00 p.m.
- Regular Board Meeting, June 27, 2017, Keene-Riverview Elementary MPR, 7:00 p.m.

Clerk to the Board

Board President

Secretary to the Clerk of the Board

Special Board Meeting June 16, 2017

A Special Meeting of the Prosser School District Board of Directors was called to order at 6:00 p.m. by Peggy S. Douglas, President. Other Board members in attendance were Andy Howe, Scotty Hunt, Jesalyn Cole and Scott Coleman. Also in attendance were Dr. Ray Tolcacher, Superintendent; Craig Reynolds, Business Manager; Kevin Lusk, Aaron Sonnichsen, Mark Skeen, Stephen Hayter, Bryan Bailey, Dave Schell, Brad and Liz Elliot, Ed Champagne, Steve Roth and Mark Puddy from Architects West; Dax Logsdon from CSG and Julie Hyatt, Secretary. The Special Meeting was held at the Staff Development Room, 1500 Grant Avenue Prosser, WA. The purpose of the Special Meeting was to review possible building placements on the site of the new high school.

APPROVAL OF AGENDA

Motion by Scotty Hunt, seconded by Andy Howe and motion carried unanimously to approve the agenda.

REVIEW OF POSSIBLE PLACEMENTS OF BUILDINGS FOR NEW HIGH SCHOOL

The representatives of Architects West presented a PHS Site Organization Study, showing possible placements of buildings on the new high school site.

Discussion ensued among those in attendance about the pros and cons of each placement design.

ADJOURNMENT:

Motion by Jesalyn Cole, seconded by Scott Coleman and motion carried unanimously to adjourn the Special Board Meeting at 7:53 p.m.

FUTURE MEETINGS:

- Community Information Meeting, June 27, 2017, Keene-Riverview Elementary MPR, 5:30 p.m.
- Regular Board Meeting, June 27, 2017, Keene-Riverview Elementary MPR, 7:00 p.m.
- Community Information Meeting, June 29, 2017, Keene-Riverview Elementary MPR, 5:30 p.m.

Clerk to the Board

Board President

Secretary to the Clerk of the Board

**Prosser School District No. 116
Contracts and Personal Service Agreements
Consent
June 27, 2017**

CONTRACTS/AGREEMENTS:

1. 2017/2018 Inspire Development Centers Interagency Service Agreement:

Inspire will provide comprehensive child development services for all children enrolled in the Inspire program. Some of the services provided are classroom experience, health, social, mental health services, parent involvement and training. Inspire and the Prosser School District Special Services department agree to the services provided. There is no cost to the district.

2. Consultant Service Agreement with Lionel Enns, PhD:

Dr. Enns will provide consulting services with two special education students, including parent follow-up meetings. Total costs, including travel, are \$5,307.08

RECOMMENDATION:

It is recommended that the Board of Directors approve the above Contracts/Agreements.

The following vouchers, as audited and certified by the Auditing Officer as required by RCW 42.24.080, and those expense reimbursement claims certified as required by RCW 42.24.090, are approved for payment. Those payments have been recorded on this listing which has been made available to the board.

As of June 27, 2017, the board, by a _____ vote, approves payments, totaling \$269,727.62. The payments are further identified in this document.

Total by Payment Type for Cash Account, GF WARRANTS PAYABLE:
Warrant Numbers 191671 through 191812, totaling \$269,727.62

Secretary _____	Board Member _____
Board Member _____	Board Member _____
Board Member _____	Board Member _____

Check Nbr	Vendor Name	Check Date	Check Amount
191671	ALSCO AMERICAN LINEN	06/30/2017	148.14
191672	Vendor Continued Check	06/30/2017	0.00
191673	AMAZON.COM	06/30/2017	1,672.51
191674	APOLLO	06/30/2017	8,047.26
191675	APPELGATE, WENDY S	06/30/2017	53.24
191676	ARANDA, SANDRA	06/30/2017	110.80
191677	ARD, STEPHANIE A	06/30/2017	55.00
191678	AUDIOLOGY TECHNOLOGY INC	06/30/2017	867.71
191679	BAKERIES, FRANZ FAMILY	06/30/2017	962.58
191680	BANK, U S	06/30/2017	32.57
191681	BARNES, LINDA S	06/30/2017	25.50
191682	BENTON REA	06/30/2017	150.00
191683	BEST WESTERN INN AT HORSE HEAV	06/30/2017	101.53
191684	BROWN'S TIRE CO	06/30/2017	111.26
191685	BROWN, MEGHAN	06/30/2017	21.00
191686	BRYSON SALES & SERVICE	06/30/2017	741.31
191687	BUILDING VISION	06/30/2017	3,510.50
191688	CAMPBELL OFFICE SUPPLY/YAKIMA	06/30/2017	2,865.11
191689	CAREERSTAFF UNLIMITED	06/30/2017	5,850.00
191690	CDI COMPUTER DEALERS INC	06/30/2017	46,890.40
191691	CENGAGE LEARNING	06/30/2017	2,066.15
191692	CENTURY LINK	06/30/2017	18.24
191693	CI INFORMATION MANAGEMENT	06/30/2017	57.17
191694	CINTAS CORPORATION	06/30/2017	342.71
191695	CITY OF PROSSER	06/30/2017	17,094.99
191696	CLASSROOM DIRECT	06/30/2017	125.20
191697	CLIFF'S SEPTIC TANK SERVICE	06/30/2017	184.62
191698	COLEMAN OIL	06/30/2017	223.28
191699	COMM/TECH	06/30/2017	526.39
191700	CONSOLIDATED ELECTRICAL DIST	06/30/2017	98.78
191701	CONSTRUCTIVE PLAYTHINGS	06/30/2017	413.99
191702	COYOTE CUSTOMS	06/30/2017	1,303.20
191703	CPI	06/30/2017	150.00

Check Nbr	Vendor Name	Check Date	Check Amount
191704	CUMMINS INC	06/30/2017	4,279.95
191705	D & L SUPPLY AND MFG	06/30/2017	592.46
191706	DELL	06/30/2017	1,594.14
191707	DENCHEL FORD COUNTRY	06/30/2017	119.17
191708	DESSERAULT, SANDRA J	06/30/2017	1,183.20
191709	DEVORE, TRAVIS C	06/30/2017	4,789.56
191710	DILLAHUNT, BRETT D.	06/30/2017	350.00
191711	DOMINO'S PIZZA PROSSER	06/30/2017	523.22
191712	DURA-SHINE CLEAN LLC	06/30/2017	555.00
191713	EDWARDS, JULIE	06/30/2017	102.00
191714	ENGRAVINGS UNLIMITED INC	06/30/2017	476.08
191715	ESTRELLITA	06/30/2017	5,270.10
191716	FEAKIN, TAMMY L	06/30/2017	37.45
191717	FOLLETT SCHOOL SOLUTIONS, INC	06/30/2017	273.57
191718	FOOD DEPOT	06/30/2017	492.23
191719	FOOD SERVICES OF AMERICA	06/30/2017	33,307.15
191720	GALLEGOS, JESSE C	06/30/2017	45.48
191721	GLIDEWELL, KAREN C	06/30/2017	30.00
191722	GOLDEN HORSE	06/30/2017	71.35
191723	GOODBOE, PAULA A	06/30/2017	112.35
191724	GRAINGER	06/30/2017	304.36
191725	GRANDVIEW LUMBER	06/30/2017	49.14
191726	H & H AUTO	06/30/2017	34.78
191727	HACHTEL, CONNIE F	06/30/2017	36.25
191728	Vendor Continued Check	06/30/2017	0.00
191729	COOK'S ACE HARDWARE	06/30/2017	1,052.72
191730	HENAGER, MELLONY A	06/30/2017	17.39
191731	HYATT, JULIE A	06/30/2017	22.22
191732	IBS INCORPORATED	06/30/2017	332.84
191733	IPEVO	06/30/2017	264.10
191734	IRRIGATION SPECIALISTS INC	06/30/2017	1,732.82
191735	JOHN BENNETT CREATIVE SERVICE	06/30/2017	279.40
191736	JOHNSTONE SUPPLY CO	06/30/2017	1,686.51
191737	JOSTENS	06/30/2017	51.05
191738	JR'S HEATING & AIR SERVICES	06/30/2017	7,782.85
191739	K C D A	06/30/2017	5,038.21
191740	KARTHAUSER-BLAIR, KASEY L	06/30/2017	294.27
191741	KIRK, LINDA W	06/30/2017	55.20
191742	LARSON, JOANNE L	06/30/2017	54.28
191743	LINCOLN ELECTRIC CUTTING SYSTE	06/30/2017	26,729.15
191744	LINK, CENTURY	06/30/2017	1,308.82
191745	LINK, CENTURY	06/30/2017	62.63
191746	LOURDES OCCUPATIONAL HEALTH CE	06/30/2017	90.00
191747	LOURDES	06/30/2017	10,764.12
191748	LOWRY, MICHELLE	06/30/2017	3,000.00
191749	M & M BOLT CO INC	06/30/2017	40.76
191750	MALDONADO, GUADALUPE	06/30/2017	72.20
191751	MANSFIELD ALARM	06/30/2017	380.10
191752	MAVERICKLABEL.COM	06/30/2017	446.15
191753	MCMURTREY, JENNIFER L	06/30/2017	306.80

Check Nbr	Vendor Name	Check Date	Check Amount
191754	MEADOW GOLD DAIRY	06/30/2017	91.13
191755	MEDRANO, ULISES	06/30/2017	11.00
191756	MEJIA, CRYSTAL	06/30/2017	16.00
191757	MID-AMERICAN RESEARCH CHEMICAL	06/30/2017	680.89
191758	MILLER, DANIELLE M	06/30/2017	163.98
191759	MOON SECURITY SERVICES INC	06/30/2017	249.06
191760	NOR-PAC SEATING CO, INC	06/30/2017	369.24
191761	Vendor Continued Check	06/30/2017	0.00
191762	OFFICE DEPOT INC	06/30/2017	1,758.14
191763	ORIENTAL TRADING CO	06/30/2017	554.33
191764	OSPI - CHILD NUTRITION SERVICE	06/30/2017	11,957.83
191765	OXARC INC	06/30/2017	26.98
191766	PACIFIC OFFICE AUTOMATION	06/30/2017	1,681.12
191767	PACIFIC OFFICE AUTOMATION	06/30/2017	248.69
191768	PHASE 2 ELECTRONIC INC	06/30/2017	588.31
191769	PHILLIPS66/CONOCO/76	06/30/2017	145.15
191770	PMH MEDICAL CENTER	06/30/2017	612.00
191771	POWELL-CHRISTENSEN, INC	06/30/2017	219.53
191772	PROSSER CHAMBER OF COMMERCE	06/30/2017	75.00
191773	PROSSER NAPA	06/30/2017	917.88
191774	PROSSER RENTALS	06/30/2017	206.34
191775	RAINWATER INC	06/30/2017	66.00
191776	RDO EQUIPMENT	06/30/2017	546.87
191777	REALLY GOOD STUFF, INC	06/30/2017	335.73
191778	REYES, MARTHA	06/30/2017	527.51
191779	ROSE CITY AWNING CO	06/30/2017	149.30
191780	RR BOOKS	06/30/2017	60.23
191781	SAFEWAY	06/30/2017	159.51
191782	SCHETKY NW SALES INC	06/30/2017	289.37
191783	SCHOLASTIC TEACHER RESOURCES	06/30/2017	58.51
191784	SCHOOL DIST #116 REVOLV FUND	06/30/2017	150.00
191785	SCHOOL SPECIALITY	06/30/2017	506.25
191786	SHULTZ, SHAWN L	06/30/2017	128.40
191787	SILVA, SIENNA RANA	06/30/2017	81.32
191788	SIX ROBBLEES INC	06/30/2017	337.88
191789	SMITH, SHELLY I	06/30/2017	18.00
191790	STARK, NANETTE L	06/30/2017	200.00
191791	STATE AUDITOR'S OFFICE	06/30/2017	5,883.29
191792	SUPPLYWORKS	06/30/2017	11,701.29
191793	T & M BOS, INC	06/30/2017	228.06
191794	TCWOA	06/30/2017	420.48
191795	TERRY'S DAIRY	06/30/2017	7,974.64
191796	THE MATH LEARNING CENTER	06/30/2017	1,838.34
191797	THE SUPPLY COMPANY LLC	06/30/2017	17.53
191798	TINSLEY, KARLENE	06/30/2017	174.44
191799	TUBAC, ELIZABETH C	06/30/2017	94.46
191800	ULINE	06/30/2017	1,628.76
191801	VALLEY SPRAY	06/30/2017	271.50
191802	VALLEY WATER SERVICES	06/30/2017	187.50
191803	WABE	06/30/2017	975.00

Check Nbr	Vendor Name	Check Date	Check Amount
191804	WAL-MART COMMUNITY	06/30/2017	184.49
191805	WASBO	06/30/2017	400.00
191806	WEBER, KATHLEEN K	06/30/2017	43.75
191807	WHITE, MELINDA J	06/30/2017	10.85
191808	WORTHINGTON DIRECT	06/30/2017	1,515.14
191809	WSIPC	06/30/2017	275.00
191810	YAKIMA BINDERY	06/30/2017	22.26
191811	YAKIMA HERALD-REPUBLIC	06/30/2017	372.64
191812	ZARAGOZA, MARIA	06/30/2017	6.00
142	Computer	Check(s) For a Total of	269,727.62

Check Nbr	Vendor Name	Check Date	Invoice Number	Invoice Desc	PO Number	Invoice Amount	Check Amount
191671	ALSCO AMERICAN LINEN	06/30/2017	LSP01910985		0	49.38	148.14
10 E 530 9900 53 7270 073 0000 0000			General Fund/Expenditures/Pupil Transportation			49.38	
			LSP01913659		0	49.38	
10 E 530 9900 53 7270 073 0000 0000			General Fund/Expenditures/Pupil Transportation			49.38	
			LSP01916362		0	49.38	
10 E 530 9900 53 7270 073 0000 0000			General Fund/Expenditures/Pupil Transportation			49.38	
191672	Vendor Continued Void	06/30/2017					0.00
191673	AMAZON.COM	06/30/2017	002705044642	Books for Kevin Cole using Professional Development Money	4501600133	26.98	1,672.51
10 L 601 0000 00 0000 000 0000 0000			General Fund/Accounts Payable			-2.32	
10 E 530 0151 31 5000 450 0000 0000			General Fund/Expenditures/Staff Dev-PEA Allocation			29.30	
			024019651783 office supplies	2401600104		78.96	
10 E 530 0100 23 5000 240 0000 0000			General Fund/Expenditures/Basic Education			85.75	
10 L 601 0000 00 0000 000 0000 0000			General Fund/Accounts Payable			-6.79	
			032661999641 Books for Kevin Cole using Professional Development Money	4501600133		42.70	
10 L 601 0000 00 0000 000 0000 0000			General Fund/Accounts Payable			-3.67	
10 E 530 0151 31 5000 450 0000 0000			General Fund/Expenditures/Staff Dev-PEA Allocation			46.37	
			052692175462 4th Grade Supplies	1101600060		11.92	
10 E 530 0118 27 5000 110 0000 0000			General Fund/Expenditures/4th Grade			12.95	
10 L 601 0000 00 0000 000 0000 0000			General Fund/Accounts Payable			-1.03	
			057221151181 4th Grade Supplies	1101600060		208.10	
10 E 530 0118 27 5000 110 0000 0000			General Fund/Expenditures/4th Grade			226.00	
10 L 601 0000 00 0000 000 0000 0000			General Fund/Accounts Payable			-17.90	
			093231036280	0		213.42	
10 E 530 9700 62 5000 074 0000 0000			General Fund/Expenditures/District-Wide Support			231.77	
10 L 601 0000 00 0000 000 0000 0000			General Fund/Accounts Payable			-18.35	
			126985340544 Office Desk	1101600068		358.37	
10 E 530 0100 27 5000 110 0000 0000			General Fund/Expenditures/Basic Education			389.19	
10 L 601 0000 00 0000 000 0000 0000			General Fund/Accounts Payable			-30.82	
			136265072752 Bulletin Board	1101600055		118.72	
10 E 530 0100 27 5000 110 0000 0000			General Fund/Expenditures/Basic Education			118.72	
			144682939255 silly string for	4501600130		137.48	

Check Nbr	Vendor Name	Check Date	Invoice Number	Invoice Desc	PO Number	Invoice Amount	Check Amount
				seniors			
10 E 530 0100 23 5200 450 0000 0000				General Fund/Expenditures/Basic Education		149.30	
10 L 601 0000 00 0000 000 0000 0000				General Fund/Accounts Payable		-11.82	
			224535186941	CAUGHT BEING GOOD	1201600052	-19.98	
10 E 530 0100 23 5000 120 0000 0000				General Fund/Expenditures/Basic Education		-21.70	
10 E 530 0100 27 5000 120 0000 0000				General Fund/Expenditures/Basic Education		0.00	
10 L 601 0000 00 0000 000 0000 0000				General Fund/Accounts Payable		1.72	
			246759580786	Supplies	7601600190	59.14	
10 E 530 9730 72 5000 076 0000 0000				General Fund/Expenditures/Tech Coordinator - Office		64.23	
10 L 601 0000 00 0000 000 0000 0000				General Fund/Accounts Payable		-5.09	
			254905302962	Chairs for Kevin's Office	1101600057	187.73	
10 E 530 0100 27 5000 110 0000 0000				General Fund/Expenditures/Basic Education		187.73	
			257654794408	Postage Shipping labels	1101600054	79.99	
10 E 530 0100 27 5000 110 0000 0000				General Fund/Expenditures/Basic Education		86.87	
10 L 601 0000 00 0000 000 0000 0000				General Fund/Accounts Payable		-6.88	
			264645687868	Books for Tom Moore using Professional Development Money	4501600134	70.86	
10 L 601 0000 00 0000 000 0000 0000				General Fund/Accounts Payable		-6.09	
10 E 530 0151 31 5000 450 0000 0000				General Fund/Expenditures/Staff Dev-PEA Allocation		76.95	
			266298058383	Thumbball Ice Breaker	4501600121	38.52	
10 E 530 0100 24 5000 450 0000 0000				General Fund/Expenditures/Basic Education		41.83	
10 L 601 0000 00 0000 000 0000 0000				General Fund/Accounts Payable		-3.31	
			292738395821	Supplies	7601600186	59.60	
10 E 530 9700 72 5000 076 0000 0000				General Fund/Expenditures/District-Wide Support		64.73	
10 L 601 0000 00 0000 000 0000 0000				General Fund/Accounts Payable		-5.13	
191674 APOLLO		06/30/2017	940007013	Monthly Maintenance Fee	7401600004	1,341.21	8,047.26
10 E 530 9700 64 7950 450 0000 0000				General Fund/Expenditures/District-Wide Support		1,341.21	
			940007014	Monthly Maintenance Fee	7401600004	1,341.21	
10 E 530 9700 64 7950 450 0000 0000				General Fund/Expenditures/District-Wide Support		1,341.21	
			940007015	Monthly Maintenance Fee	7401600004	1,341.21	
10 E 530 9700 64 7950 450 0000 0000				General Fund/Expenditures/District-Wide Support		1,341.21	

Check Nbr	Vendor Name	Check Date	Invoice Number	Invoice Desc	PO Number	Invoice Amount	Check Amount
			940007016	Monthly Maintenance Fee	7401600004	1,341.21	
10 E 530 9700 64 7950 450 0000 0000			General Fund/Expenditures/District-Wide Support			1,341.21	
			940007017	Monthly Maintenance Fee	7401600004	1,341.21	
10 E 530 9700 64 7950 450 0000 0000			General Fund/Expenditures/District-Wide Support			1,341.21	
			940007018	Monthly Maintenance Fee	7401600004	1,341.21	
10 E 530 9700 64 7950 450 0000 0000			General Fund/Expenditures/District-Wide Support			1,341.21	
191675 APPELGATE, WENDY S		06/30/2017	ADVENTURES IN ART		0	53.24	53.24
10 E 530 0151 31 5000 110 0000 0000			General Fund/Expenditures/Staff Dev-PEA Allocation			53.24	
191676 ARANDA, SANDRA		06/30/2017	MAY 2017		0	110.80	110.80
10 E 530 2100 27 8010 063 0000 0000			General Fund/Expenditures/Spec Ed - State			110.80	
191677 ARD, STEPHANIE A		06/30/2017	STEAM POWER		0	55.00	55.00
10 E 530 0151 31 7000 240 0000 0000			General Fund/Expenditures/Staff Dev-PEA Allocation			55.00	
191678 AUDIOLOGY TECHNOLOGY INC		06/30/2017	1574		0	867.71	867.71
10 E 530 0100 26 5300 064 0000 0000			General Fund/Expenditures/Basic Education			867.71	
191679 BAKERIES, FRANZ FAMILY		06/30/2017	27011413501		0	195.90	962.58
10 E 530 9800 42 5420 075 0000 0000			General Fund/Expenditures/Food Service			195.90	
			27011413701		0	97.92	
10 E 530 9800 42 5420 075 0000 0000			General Fund/Expenditures/Food Service			97.92	
			27011413802		0	168.30	
10 E 530 9800 42 5420 075 0000 0000			General Fund/Expenditures/Food Service			168.30	
			27011414201		0	176.28	
10 E 530 9800 42 5420 075 0000 0000			General Fund/Expenditures/Food Service			176.28	
			27011415001		0	141.78	
10 E 530 9800 42 5420 075 0000 0000			General Fund/Expenditures/Food Service			141.78	
			27011415601		0	182.40	
10 E 530 9800 42 5420 075 0000 0000			General Fund/Expenditures/Food Service			182.40	
191680 BANK, U S		06/30/2017	6/6/2017 #2		0	32.57	32.57
10 E 530 0100 27 5030 130 0000 0000			General Fund/Expenditures/Basic Education			32.57	
191681 BARNES, LINDA S		06/30/2017	braille supplies		0	25.50	25.50
10 E 530 2100 27 5000 063 0000 0000			General Fund/Expenditures/Spec Ed - State			25.50	
191682 BENTON REA		06/30/2017	107669		0	150.00	150.00
10 E 530 9700 72 5000 076 0000 0000			General Fund/Expenditures/District-Wide Support			50.00	

Check Nbr	Vendor Name	Check Date	Invoice Number	Invoice Desc	PO Number	Invoice Amount	Check Amount
10 E 530 9700 72 5030 076 0000 0000				General Fund/Expenditures/District-Wide Support		100.00	
191683	BEST WESTERN INN AT HORSE HEAV	06/30/2017	6889		0	101.53	101.53
10 E 530 9700 11 7000 071 0000 0000				General Fund/Expenditures/District-Wide Support		101.53	
191684	BROWN'S TIRE CO	06/30/2017	74300114584		0	26.06	111.26
10 E 530 9900 53 5950 073 0000 0000				General Fund/Expenditures/Pupil Transportation		26.06	
			74300115015		0	20.72	
10 E 530 9700 62 5950 074 0000 0000				General Fund/Expenditures/District-Wide Support		20.72	
			74300116348		0	64.48	
10 E 530 0100 27 5000 130 0000 0000				General Fund/Expenditures/Basic Education		64.48	
191685	BROWN, MEGHAN	06/30/2017	book refund		0	21.00	21.00
10 R 960 0000 26 2600 120 0000 0000				General Fund/Revenues/Program 00		21.00	
191686	BRYSON SALES & SERVICE	06/30/2017	254197		0	231.08	741.31
10 E 530 9900 53 5000 073 0000 0000				General Fund/Expenditures/Pupil Transportation		231.08	
			254529		0	51.82	
10 E 530 9900 53 5000 073 0000 0000				General Fund/Expenditures/Pupil Transportation		51.82	
			254597		0	458.41	
10 E 530 9900 53 5000 073 0000 0000				General Fund/Expenditures/Pupil Transportation		458.41	
191687	BUILDING VISION	06/30/2017	118		0	3,510.50	3,510.50
10 E 530 2100 26 7000 063 0000 0000				General Fund/Expenditures/Spec Ed - State		3,510.50	
191688	CAMPBELL OFFICE SUPPLY/YAKIMA	06/30/2017	253306-0		0	132.89	2,865.11
10 E 530 9800 44 5000 075 0000 0000				General Fund/Expenditures/Food Service		132.89	
			253389-0		0	39.09	
10 E 530 9800 44 5000 075 0000 0000				General Fund/Expenditures/Food Service		39.09	
			253392-0		0	434.03	
10 E 530 9900 51 5000 073 0000 0000				General Fund/Expenditures/Pupil Transportation		190.93	
10 E 530 9900 52 5000 073 0000 0000				General Fund/Expenditures/Pupil Transportation		243.10	
			254005-0		0	97.28	
10 E 530 5320 21 5000 060 0000 0000				General Fund/Expenditures/Migrant Ed		97.28	
			254399-0		0	44.88	
10 E 530 0100 21 5000 060 0000 0000				General Fund/Expenditures/Basic Education		44.88	
			254441-0	2016/2017 Open PO for District Office supplies.	7201600004	1,278.72	
10 E 530 9700 12 5000 071 0000 0000				General Fund/Expenditures/District-Wide Support		639.36	
10 E 530 9700 13 5000 072 0000 0000				General Fund/Expenditures/District-Wide Support		639.36	

Check Nbr	Vendor Name	Check Date	Invoice Number	Invoice Desc	PO Number	Invoice Amount	Check Amount
			254456-0	2016/2017 Open PO for District Office supplies.	7201600004	47.57	
10 E 530 9700 12 5000 071 0000 0000				General Fund/Expenditures/District-Wide Support		23.79	
10 E 530 9700 13 5000 072 0000 0000				General Fund/Expenditures/District-Wide Support		23.78	
			254865-0	2016/2017 Open PO for District Office supplies.	7201600004	790.65	
10 E 530 9700 12 5000 071 0000 0000				General Fund/Expenditures/District-Wide Support		395.33	
10 E 530 9700 13 5000 072 0000 0000				General Fund/Expenditures/District-Wide Support		395.32	
191689 CAREERSTAFF UNLIMITED		06/30/2017	35651-405861		0	2,925.00	5,850.00
10 E 530 2100 26 7000 063 0000 0000				General Fund/Expenditures/Spec Ed - State		2,925.00	
			35651-406746		0	2,925.00	
10 E 530 2100 26 7000 063 0000 0000				General Fund/Expenditures/Spec Ed - State		2,925.00	
191690 CDI COMPUTER DEALERS INC		06/30/2017	584663	Carts for Curriculum	7601600173	42,237.63	46,890.40
10 L 601 0000 00 0000 000 0000 0000				General Fund/Accounts Payable		-3,632.44	
10 E 530 0187 27 5310 240 0000 0000				General Fund/Expenditures/Text Adoption		30,580.05	
10 E 530 0187 27 5310 450 0000 0000				General Fund/Expenditures/Text Adoption		15,290.02	
			585149	Streams and Charging station	7601600187	4,652.77	
10 L 601 0000 00 0000 000 0000 0000				General Fund/Accounts Payable		-400.14	
10 E 530 6500 27 5320 060 0000 0000				General Fund/Expenditures/State Trans Bilingual		5,052.91	
191691 CENGAGE LEARNING		06/30/2017	no. 60665206	Accounting Working Papers	4561600034	1,853.80	2,066.15
10 E 530 3161 27 5000 450 0000 0000				General Fund/Expenditures/Business		1,853.80	
			no. 60687149	New First Grade Spanish for Whitstran	6001600100	212.35	
10 E 530 0187 27 5070 110 0000 0000				General Fund/Expenditures/Text Adoption		212.35	
191692 CENTURY LINK		06/30/2017	1411610160		0	18.24	18.24
10 E 530 9700 65 7810 063 0000 0000				General Fund/Expenditures/District-Wide Support		7.99	
10 E 530 9700 65 7810 072 0000 0000				General Fund/Expenditures/District-Wide Support		0.53	
10 E 530 9700 65 7810 073 0000 0000				General Fund/Expenditures/District-Wide Support		0.04	
10 E 530 9700 65 7810 074 0000 0000				General Fund/Expenditures/District-Wide Support		0.15	
10 E 530 9700 65 7810 120 0000 0000				General Fund/Expenditures/District-Wide Support		0.69	
10 E 530 9700 65 7810 130 0000 0000				General Fund/Expenditures/District-Wide Support		2.97	
10 E 530 9700 65 7810 240 0000 0000				General Fund/Expenditures/District-Wide Support		2.59	
10 E 530 9700 65 7810 450 0000 0000				General Fund/Expenditures/District-Wide Support		3.28	
191693 CI INFORMATION MANAGEMENT		06/30/2017	0050201	Shredding Company for the Office-As	4501600051	38.11	57.17

Check Nbr	Vendor Name	Check Date	Invoice Number	Invoice Desc	PO Number	Invoice Amount	Check Amount
10 E 530 0100 27 7000 450 0000 0000				General Fund/Expenditures/Basic Education		38.11	
			0050205	Shred Service for 2016-17	1301600011	19.06	
10 E 530 0100 27 7000 130 0000 0000				General Fund/Expenditures/Basic Education		19.06	
191694 CINTAS CORPORATION		06/30/2017	5008034020		0	17.29	342.71
10 E 530 9800 44 5000 075 0000 0000				General Fund/Expenditures/Food Service		17.29	
			5008034021		0	43.16	
10 E 530 9800 44 5000 075 0000 0000				General Fund/Expenditures/Food Service		43.16	
			5008034022		0	282.26	
10 E 530 9800 44 5000 075 0000 0000				General Fund/Expenditures/Food Service		282.26	
191695 CITY OF PROSSER		06/30/2017	6/21/2017		0	17,094.99	17,094.99
10 E 530 9700 65 7850 482 0000 0000				General Fund/Expenditures/District-Wide Support		27.44	
10 E 530 9700 65 7860 482 0000 0000				General Fund/Expenditures/District-Wide Support		187.97	
10 E 530 9700 65 7870 482 0000 0000				General Fund/Expenditures/District-Wide Support		44.76	
10 E 530 9700 65 7880 482 0000 0000				General Fund/Expenditures/District-Wide Support		42.85	
10 E 530 9700 65 7850 450 0000 0000				General Fund/Expenditures/District-Wide Support		1,126.89	
10 E 530 9700 65 7860 450 0000 0000				General Fund/Expenditures/District-Wide Support		1,200.96	
10 E 530 9700 65 7870 450 0000 0000				General Fund/Expenditures/District-Wide Support		1,649.36	
10 E 530 9700 65 7880 450 0000 0000				General Fund/Expenditures/District-Wide Support		20.60	
10 E 530 9700 65 7850 450 0000 0000				General Fund/Expenditures/District-Wide Support		291.60	
10 E 530 9700 65 7870 450 0000 0000				General Fund/Expenditures/District-Wide Support		414.14	
10 E 530 9700 65 7880 450 0000 0000				General Fund/Expenditures/District-Wide Support		38.25	
10 E 530 9700 65 7850 450 0000 0000				General Fund/Expenditures/District-Wide Support		285.79	
10 E 530 9700 65 7870 450 0000 0000				General Fund/Expenditures/District-Wide Support		405.55	
10 E 530 9700 65 7850 450 0000 0000				General Fund/Expenditures/District-Wide Support		25.51	
10 E 530 9700 65 7850 450 0000 0000				General Fund/Expenditures/District-Wide Support		46.89	
10 E 530 9700 65 7860 450 0000 0000				General Fund/Expenditures/District-Wide Support		19.55	
10 E 530 9700 65 7870 450 0000 0000				General Fund/Expenditures/District-Wide Support		73.53	
10 E 530 9700 65 7880 450 0000 0000				General Fund/Expenditures/District-Wide Support		32.14	
10 E 530 9700 65 7880 055 0000 0000				General Fund/Expenditures/District-Wide Support		37.33	
10 E 530 9700 65 7850 055 0000 0000				General Fund/Expenditures/District-Wide Support		182.19	
10 E 530 9700 65 7880 055 0000 0000				General Fund/Expenditures/District-Wide Support		29.43	
10 E 530 9700 65 7850 063 0000 0000				General Fund/Expenditures/District-Wide Support		86.01	
10 E 530 9700 65 7860 063 0000 0000				General Fund/Expenditures/District-Wide Support		97.55	
10 E 530 9700 65 7870 063 0000 0000				General Fund/Expenditures/District-Wide Support		41.91	
10 E 530 9700 65 7880 063 0000 0000				General Fund/Expenditures/District-Wide Support		0.66	
10 E 530 9700 65 7850 120 0000 0000				General Fund/Expenditures/District-Wide Support		411.73	
10 E 530 9700 65 7860 120 0000 0000				General Fund/Expenditures/District-Wide Support		689.35	
10 E 530 9700 65 7870 120 0000 0000				General Fund/Expenditures/District-Wide Support		591.79	
10 E 530 9700 65 7880 120 0000 0000				General Fund/Expenditures/District-Wide Support		107.89	
10 E 530 9700 65 7850 073 0000 0000				General Fund/Expenditures/District-Wide Support		275.33	
10 E 530 9700 65 7860 073 0000 0000				General Fund/Expenditures/District-Wide Support		192.20	
10 E 530 9700 65 7870 073 0000 0000				General Fund/Expenditures/District-Wide Support		423.10	
10 E 530 9700 65 7850 055 0000 0000				General Fund/Expenditures/District-Wide Support		672.90	
10 E 530 9700 65 7870 055 0000 0000				General Fund/Expenditures/District-Wide Support		970.08	

Check Nbr	Vendor Name	Check Date	Invoice Number	Invoice Desc	PO Number	Invoice Amount	Check Amount
10 E 530 9700 65 7850 240 0000 0000				General Fund/Expenditures/District-Wide Support		1,038.81	
10 E 530 9700 65 7860 240 0000 0000				General Fund/Expenditures/District-Wide Support		826.65	
10 E 530 9700 65 7870 240 0000 0000				General Fund/Expenditures/District-Wide Support		984.65	
10 E 530 9700 65 7880 240 0000 0000				General Fund/Expenditures/District-Wide Support		42.27	
10 E 530 9700 65 7850 240 0000 0000				General Fund/Expenditures/District-Wide Support		733.32	
10 E 530 9700 65 7880 240 0000 0000				General Fund/Expenditures/District-Wide Support		154.97	
10 E 530 9700 65 7850 074 0000 0000				General Fund/Expenditures/District-Wide Support		46.94	
10 E 530 9700 65 7860 074 0000 0000				General Fund/Expenditures/District-Wide Support		220.88	
10 E 530 9700 65 7870 074 0000 0000				General Fund/Expenditures/District-Wide Support		85.35	
10 E 530 9700 65 7880 055 0000 0000				General Fund/Expenditures/District-Wide Support		302.10	
10 E 530 9700 65 7880 055 0000 0000				General Fund/Expenditures/District-Wide Support		2.16	
10 E 530 9700 65 7880 055 0000 0000				General Fund/Expenditures/District-Wide Support		58.85	
10 E 530 9700 65 7880 055 0000 0000				General Fund/Expenditures/District-Wide Support		3.38	
10 E 530 9700 65 7880 055 0000 0000				General Fund/Expenditures/District-Wide Support		31.39	
10 E 530 9700 65 7850 130 0000 0000				General Fund/Expenditures/District-Wide Support		345.78	
10 E 530 9700 65 7860 130 0000 0000				General Fund/Expenditures/District-Wide Support		440.19	
10 E 530 9700 65 7870 130 0000 0000				General Fund/Expenditures/District-Wide Support		494.27	
10 E 530 9700 65 7880 130 0000 0000				General Fund/Expenditures/District-Wide Support		9.38	
10 E 530 9700 65 7850 130 0000 0000				General Fund/Expenditures/District-Wide Support		85.03	
10 E 530 9700 65 7870 130 0000 0000				General Fund/Expenditures/District-Wide Support		141.69	
10 E 530 9700 65 7880 130 0000 0000				General Fund/Expenditures/District-Wide Support		127.51	
10 E 530 9700 65 7880 093 0000 0000				General Fund/Expenditures/District-Wide Support		52.88	
10 E 530 9700 65 7880 093 0000 0000				General Fund/Expenditures/District-Wide Support		3.78	
10 E 530 9700 65 7880 093 0000 0000				General Fund/Expenditures/District-Wide Support		8.93	
10 E 530 9700 65 7850 055 0000 0000				General Fund/Expenditures/District-Wide Support		110.60	
191696 CLASSROOM DIRECT		06/30/2017	208118329541	HADDOW'S CLASSROOM	1101600066	92.25	125.20
10 E 530 0114 27 5000 110 0000 0000				General Fund/Expenditures/Kindergarten		92.25	
			208118346078	RHODE - CLASSROOM BUDGET	1201600066	32.95	
10 E 530 0115 27 5000 120 0000 0000				General Fund/Expenditures/1st Grade		32.95	
191697 CLIFF'S SEPTIC TANK SERVICE		06/30/2017	157297		0	184.62	184.62
10 E 530 9700 64 7000 074 0000 0000				General Fund/Expenditures/District-Wide Support		184.62	
191698 COLEMAN OIL		06/30/2017	CL96972		0	223.28	223.28
10 E 530 9900 53 5900 073 0000 0000				General Fund/Expenditures/Pupil Transportation		223.28	
191699 COMM/TECH		06/30/2017	09-3236		0	480.23	526.39
10 E 530 9900 52 5300 073 0000 0000				General Fund/Expenditures/Pupil Transportation		480.23	
			31-17-255		0	23.08	
10 E 530 0100 27 5000 120 0000 0000				General Fund/Expenditures/Basic Education		23.08	
			31-17-256		0	23.08	
10 E 530 0100 27 5000 120 0000 0000				General Fund/Expenditures/Basic Education		23.08	
191700 CONSOLIDATED ELECTRICAL DIST		06/30/2017	3627-573594		0	98.78	98.78

Check Nbr	Vendor Name	Check Date	Invoice Number	Invoice Desc	PO Number	Invoice Amount	Check Amount
10 E 530 9700 64 5810 074 0000 0000				General Fund/Expenditures/District-Wide Support		98.78	
191701	CONSTRUCTIVE PLAYTHINGS	06/30/2017	5152798300	NEW 2ND GRADE CLASSROOM	1201600087	413.99	413.99
10 L 601 0000 00 0000 000 0000 0000				General Fund/Accounts Payable		-35.60	
10 E 530 0149 27 5300 120 0000 0000				General Fund/Expenditures/Start-Up		449.59	
191702	COYOTE CUSTOMS	06/30/2017	2064		0	1,303.20	1,303.20
10 E 530 9700 64 7000 074 0000 0000				General Fund/Expenditures/District-Wide Support		1,303.20	
191703	CPI	06/30/2017	IUSI0083438		0	150.00	150.00
10 E 530 2100 21 7390 063 0000 0000				General Fund/Expenditures/Spec Ed - State		150.00	
191704	CUMMINS INC	06/30/2017	013-1050		0	170.75	4,279.95
10 E 530 9900 53 5000 073 0000 0000				General Fund/Expenditures/Pupil Transportation		170.75	
				013-1804	0	176.28	
10 E 530 9900 53 5000 073 0000 0000				General Fund/Expenditures/Pupil Transportation		176.28	
				013-1936	0	3,375.19	
10 E 530 9900 53 5000 073 0000 0000				General Fund/Expenditures/Pupil Transportation		3,375.19	
				013-2185	0	203.34	
10 E 530 9900 53 5000 073 0000 0000				General Fund/Expenditures/Pupil Transportation		203.34	
				013-2197	0	40.54	
10 E 530 9900 53 5000 073 0000 0000				General Fund/Expenditures/Pupil Transportation		40.54	
				013-2249	0	313.85	
10 E 530 9900 53 5000 073 0000 0000				General Fund/Expenditures/Pupil Transportation		313.85	
191705	D & L SUPPLY AND MFG	06/30/2017	331977		0	189.42	592.46
10 E 530 9700 64 5000 074 0000 0000				General Fund/Expenditures/District-Wide Support		189.42	
				332267	0	148.25	
10 E 530 9700 64 5000 074 0000 0000				General Fund/Expenditures/District-Wide Support		148.25	
				332328	0	169.86	
10 E 530 9700 64 5000 074 0000 0000				General Fund/Expenditures/District-Wide Support		169.86	
				332401	0	84.93	
10 E 530 9700 64 5000 074 0000 0000				General Fund/Expenditures/District-Wide Support		84.93	
191706	DELL	06/30/2017	10171569106	Projector for KRV Classroom	7601600184	475.98	1,594.14
10 E 530 0149 27 5330 120 0000 0000				General Fund/Expenditures/Start-Up		475.98	
				10171624752	Desktop for new classroom at KRV	797.30	
10 E 530 0149 27 5310 120 0000 0000				General Fund/Expenditures/Start-Up		797.30	

Check Nbr	Vendor Name	Check Date	Invoice Number	Invoice Desc	PO Number	Invoice Amount	Check Amount
			10173759812	Monitors for S. Groom	7601600198	320.86	
10 E 530 9700 13 5000 072 0000 0000			General Fund/Expenditures/District-Wide Support			320.86	
191707	DENCHEL FORD COUNTRY	06/30/2017	55171		0	119.17	119.17
10 E 530 9700 75 5000 073 0000 0000			General Fund/Expenditures/District-Wide Support			119.17	
191708	DESSERAULT, SANDRA J	06/30/2017	AIR FFA		0	1,183.20	1,183.20
10 E 530 3160 27 8030 450 0000 0000			General Fund/Expenditures/Agriculture			1,183.20	
191709	DEVORE, TRAVIS C	06/30/2017	FFA NAT. AIR		0	4,789.56	4,789.56
10 E 530 3160 27 8030 450 0000 0000			General Fund/Expenditures/Agriculture			4,789.56	
191710	DILLAHUNT, BRETT D.	06/30/2017	TUITION		0	350.00	350.00
10 E 530 0151 31 7000 450 0000 0000			General Fund/Expenditures/Staff Dev-PEA Allocation			350.00	
191711	DOMINO'S PIZZA PROSSER	06/30/2017	26194		0	56.47	523.22
10 E 530 9800 42 5430 075 0000 0000			General Fund/Expenditures/Food Service			56.47	
			26507		0	56.47	
10 E 530 9800 42 5430 075 0000 0000			General Fund/Expenditures/Food Service			56.47	
			27399		0	56.47	
10 E 530 9800 42 5430 075 0000 0000			General Fund/Expenditures/Food Service			56.47	
			27701		0	66.81	
10 E 530 9800 42 5430 075 0000 0000			General Fund/Expenditures/Food Service			66.81	
			28977		0	56.47	
10 E 530 9800 42 5430 075 0000 0000			General Fund/Expenditures/Food Service			56.47	
			29962		0	56.47	
10 E 530 9800 42 5430 075 0000 0000			General Fund/Expenditures/Food Service			56.47	
			30245		0	56.47	
10 E 530 9800 42 5430 075 0000 0000			General Fund/Expenditures/Food Service			56.47	
			31147		0	56.47	
10 E 530 9800 42 5430 075 0000 0000			General Fund/Expenditures/Food Service			56.47	
			32181		1584	61.12	
10 E 530 9700 11 5000 071 0000 0000			General Fund/Expenditures/District-Wide Support			61.12	
191712	DURA-SHINE CLEAN LLC	06/30/2017	14161		0	555.00	555.00
10 E 530 9700 63 7000 450 0000 0000			General Fund/Expenditures/District-Wide Support			555.00	
191713	EDWARDS, JULIE	06/30/2017	CDL 2017		0	102.00	102.00
10 E 530 9900 52 7000 073 0000 0000			General Fund/Expenditures/Pupil Transportation			102.00	
191714	ENGRAVINGS UNLIMITED INC	06/30/2017	22P 6/12/2017		0	454.44	476.08

Check Nbr	Vendor Name	Check Date	Invoice Number	Invoice Desc	PO Number	Invoice Amount	Check Amount
10 E 530 9700 11 5000 071 0000 0000				General Fund/Expenditures/District-Wide Support		65.16	
10 E 530 9700 12 5000 071 0000 0000				General Fund/Expenditures/District-Wide Support		389.28	
		23P 6/13/2017			0	21.64	
10 E 530 9700 12 5000 071 0000 0000				General Fund/Expenditures/District-Wide Support		21.64	
191715 ESTRELLITA		06/30/2017	22302	Estrellita order for Bilingual Kinder & First Grade for 2017 - 2018	6001600084	5,270.10	5,270.10
10 E 530 0187 27 5070 110 0000 0000				General Fund/Expenditures/Text Adoption		2,635.05	
10 E 530 0187 27 5070 120 0000 0000				General Fund/Expenditures/Text Adoption		2,635.05	
191716 FEAKIN, TAMMY L		06/30/2017	PASCO 6/1/2017		0	37.45	37.45
10 E 530 5104 31 8030 060 0000 0000				General Fund/Expenditures/Title I-Homeless		37.45	
191717 FOLLETT SCHOOL SOLUTIONS, INC		06/30/2017	1268808	Library Scanner	7601600181	273.57	273.57
10 E 530 9700 72 5000 130 0000 0000				General Fund/Expenditures/District-Wide Support		273.57	
191718 FOOD DEPOT		06/30/2017	170865		1583	29.04	492.23
10 E 530 9700 11 5000 071 0000 0000				General Fund/Expenditures/District-Wide Support		29.04	
			170868		1555	29.90	
10 E 530 9897 44 5910 075 0000 0000				General Fund/Expenditures/Food Services-Catering		29.90	
			170873		1319	100.00	
10 E 530 0191 27 0990 131 0000 0000				General Fund/Expenditures/Summer School		100.00	
			170874		1318	100.00	
10 E 530 0191 27 0990 131 0000 0000				General Fund/Expenditures/Summer School		100.00	
			170875		1320	100.00	
10 E 530 0191 27 0990 131 0000 0000				General Fund/Expenditures/Summer School		100.00	
			170876		1321	75.00	
10 E 530 0191 27 0990 131 0000 0000				General Fund/Expenditures/Summer School		75.00	
			170879		9630	50.00	
10 E 530 9900 51 5000 073 0000 0000				General Fund/Expenditures/Pupil Transportation		50.00	
			170880		9631	8.29	
10 E 530 9900 51 5000 073 0000 0000				General Fund/Expenditures/Pupil Transportation		8.29	
191719 FOOD SERVICES OF AMERICA		06/30/2017	7850822		0	484.07	33,307.15
10 E 530 9800 42 5440 075 0000 0000				General Fund/Expenditures/Food Service		484.07	
			7850823		0	1,342.05	
10 E 530 9800 42 5440 075 0000 0000				General Fund/Expenditures/Food Service		1,342.05	

Check Nbr	Vendor Name	Check Date	Invoice Number	Invoice Desc	PO Number	Invoice Amount	Check Amount
10 E 530 9800 44 5910 075 0000 0000			7850824	General Fund/Expenditures/Food Service	0	903.60	903.60
10 E 530 9800 42 5430 075 0000 0000			7850825	General Fund/Expenditures/Food Service	0	2,019.50	2,019.50
10 E 530 9800 42 5430 075 0000 0000			7850826	General Fund/Expenditures/Food Service	0	65.39	65.39
10 E 530 9800 42 5440 075 0000 0000			7850828	General Fund/Expenditures/Food Service	0	116.00	116.00
10 E 530 9800 42 5440 075 0000 0000			7858274	General Fund/Expenditures/Food Service	0	1,222.67	1,222.67
10 E 530 9800 42 5430 075 0000 0000			7858275	General Fund/Expenditures/Food Service	0	1,450.61	1,450.61
10 E 530 9800 42 5440 075 0000 0000			7867008	General Fund/Expenditures/Food Service	0	1,917.06	1,917.06
10 E 530 9800 44 5910 075 0000 0000			7867009	General Fund/Expenditures/Food Service	0	952.12	952.12
10 E 530 9800 42 5430 075 0000 0000			7867010	General Fund/Expenditures/Food Service	0	4,547.12	4,547.12
10 E 530 9800 42 5440 075 0000 0000			7867011	General Fund/Expenditures/Food Service	0	378.39	378.39
10 E 530 9800 42 5440 075 0000 0000			7874244	General Fund/Expenditures/Food Service	0	2,100.83	2,100.83
10 E 530 9800 44 5470 075 0000 0000			7874245	General Fund/Expenditures/Food Service	0	24.05	24.05
10 E 530 9800 42 5430 075 0000 0000			7883020	General Fund/Expenditures/Food Service	0	128.04	128.04
10 E 530 9800 42 5440 075 0000 0000			7883021	General Fund/Expenditures/Food Service	0	2,877.49	2,877.49
10 E 530 9800 44 5910 075 0000 0000			7883022	General Fund/Expenditures/Food Service	0	719.92	719.92
10 E 530 9800 42 5430 075 0000 0000			7883023	General Fund/Expenditures/Food Service	0	1,743.04	1,743.04
10 E 530 9800 42 5430 075 0000 0000			7883024	General Fund/Expenditures/Food Service	0	2,742.36	2,742.36

Check Nbr	Vendor Name	Check Date	Invoice Number	Invoice Desc	PO Number	Invoice Amount	Check Amount
			7883025		0	707.85	
10 E 530 9897 42 5430 075 0000 0000			General Fund/Expenditures/Food Services-Catering			707.85	
			7898018		0	768.56	
10 E 530 9800 42 5430 075 0000 0000			General Fund/Expenditures/Food Service			768.56	
			7898022		0	4,028.06	
10 E 530 9800 42 5440 075 0000 0000			General Fund/Expenditures/Food Service			4,028.06	
			7898030		0	1,717.21	
10 E 530 9800 42 5430 075 0000 0000			General Fund/Expenditures/Food Service			1,717.21	
			7898036		0	351.16	
10 E 530 9800 44 5910 075 0000 0000			General Fund/Expenditures/Food Service			351.16	
191720 GALLEGOS, JESSE C		06/30/2017 MAY 2017			0	45.48	45.48
10 E 530 2100 26 8010 063 0000 0000			General Fund/Expenditures/Spec Ed - State			45.48	
191721 GLIDEWELL, KAREN C		06/30/2017 BOOK REFUND			0	30.00	30.00
10 R 960 0000 26 2600 240 0000 0000			General Fund/Revenues/Program 00			30.00	
191722 GOLDEN HORSE		06/30/2017 70896			1585	71.35	71.35
10 E 530 9700 11 5000 071 0000 0000			General Fund/Expenditures/District-Wide Support			71.35	
191723 GOODBOE, PAULA A		06/30/2017 MOSES LAKE			0	112.35	112.35
10 E 530 9825 44 8030 075 0000 0000			General Fund/Expenditures/Food Service - SS			112.35	
191724 GRAINGER		06/30/2017 9456231886			0	304.36	304.36
10 E 530 9700 64 5000 074 0000 0000			General Fund/Expenditures/District-Wide Support			304.36	
191725 GRANDVIEW LUMBER		06/30/2017 166975			0	49.14	49.14
10 E 530 9700 64 5000 074 0000 0000			General Fund/Expenditures/District-Wide Support			49.14	
191726 H & H AUTO		06/30/2017 S62189			0	34.78	34.78
10 E 530 9900 53 7000 073 0000 0000			General Fund/Expenditures/Pupil Transportation			34.78	
191727 HACHTEL, CONNIE F		06/30/2017 PIZZA 6/9/2017			0	36.25	36.25
10 E 530 0100 21 5000 060 0000 0000			General Fund/Expenditures/Basic Education			36.25	
191728 Vendor Continued Void		06/30/2017					0.00
191729 COOK'S ACE HARDWARE		06/30/2017 A404074			0	6.07	1,052.72
10 E 530 9700 64 5000 074 0000 0000			General Fund/Expenditures/District-Wide Support			6.07	
			A404209		0	4.49	
10 E 530 9900 53 5000 073 0000 0000			General Fund/Expenditures/Pupil Transportation			4.49	
			A404229		0	14.75	
10 E 530 9700 62 5000 074 0000 0000			General Fund/Expenditures/District-Wide Support			14.75	
			A404642		0	8.64	

Check Nbr	Vendor Name	Check Date	Invoice Number	Invoice Desc	PO Number	Invoice Amount	Check Amount
10 E 530 9700 64 5000 074 0000 0000				General Fund/Expenditures/District-Wide Support		8.64	
			A404680		0	9.22	
10 E 530 9900 53 5000 073 0000 0000				General Fund/Expenditures/Pupil Transportation		9.22	
			A404710		0	9.33	
10 E 530 9900 53 5000 073 0000 0000				General Fund/Expenditures/Pupil Transportation		9.33	
			A404800		0	19.09	
10 E 530 9700 64 5000 074 0000 0000				General Fund/Expenditures/District-Wide Support		19.09	
			A404911		0	7.73	
10 E 530 9900 53 5000 073 0000 0000				General Fund/Expenditures/Pupil Transportation		7.73	
			A404927		0	7.47	
10 E 530 9900 53 5000 073 0000 0000				General Fund/Expenditures/Pupil Transportation		7.47	
			A404958		0	25.80	
10 E 530 9700 62 5000 074 0000 0000				General Fund/Expenditures/District-Wide Support		25.80	
			A405048		0	7.15	
10 E 530 9700 62 5000 074 0000 0000				General Fund/Expenditures/District-Wide Support		7.15	
			A405318		0	10.85	
10 E 530 9700 64 5000 074 0000 0000				General Fund/Expenditures/District-Wide Support		10.85	
			A405866		0	6.05	
10 E 530 9700 64 5000 074 0000 0000				General Fund/Expenditures/District-Wide Support		6.05	
			A406065		0	66.73	
10 E 530 9700 62 5000 074 0000 0000				General Fund/Expenditures/District-Wide Support		66.73	
			A406090		0	15.51	
10 E 530 9700 62 5000 074 0000 0000				General Fund/Expenditures/District-Wide Support		15.51	
			A406255		0	45.59	
10 E 530 9700 62 5000 074 0000 0000				General Fund/Expenditures/District-Wide Support		45.59	
			A406850		0	18.45	
10 E 530 9700 62 5000 074 0000 0000				General Fund/Expenditures/District-Wide Support		18.45	
			A406978		0	0.93	
10 E 530 9900 53 5000 073 0000 0000				General Fund/Expenditures/Pupil Transportation		0.93	
			A407141		0	17.37	
10 E 530 9700 64 5000 074 0000 0000				General Fund/Expenditures/District-Wide Support		17.37	
			A407397		0	4.32	
10 E 530 9900 53 5000 073 0000 0000				General Fund/Expenditures/Pupil Transportation		4.32	

Check Nbr	Vendor Name	Check Date	Invoice Number	Invoice Desc	PO Number	Invoice Amount	Check Amount
			A407858		0	22.75	
10 E 530 9700 64 5000 074 0000 0000			General Fund/Expenditures/District-Wide Support			22.75	
			A407873		0	3.03	
10 E 530 9700 64 5000 074 0000 0000			General Fund/Expenditures/District-Wide Support			3.03	
			A407880		0	9.33	
10 E 530 9700 64 5000 074 0000 0000			General Fund/Expenditures/District-Wide Support			9.33	
			A407952		0	4.85	
10 E 530 9900 53 5000 073 0000 0000			General Fund/Expenditures/Pupil Transportation			4.85	
			A408019		0	11.16	
10 E 530 9900 53 5000 073 0000 0000			General Fund/Expenditures/Pupil Transportation			11.16	
			A408218		0	11.91	
10 E 530 9700 62 5000 074 0000 0000			General Fund/Expenditures/District-Wide Support			11.91	
			A408268		0	5.63	
10 E 530 9700 64 5000 074 0000 0000			General Fund/Expenditures/District-Wide Support			5.63	
			C17161		0	11.06	
10 E 530 9900 53 5000 073 0000 0000			General Fund/Expenditures/Pupil Transportation			11.06	
			C17232		0	3.25	
10 E 530 9700 64 5000 074 0000 0000			General Fund/Expenditures/District-Wide Support			3.25	
			C17359		0	38.92	
10 E 530 9700 63 5000 074 0000 0000			General Fund/Expenditures/District-Wide Support			38.92	
			C17536		0	28.47	
10 E 530 9700 62 5000 074 0000 0000			General Fund/Expenditures/District-Wide Support			28.47	
			C17658		0	4.33	
10 E 530 9900 53 5000 073 0000 0000			General Fund/Expenditures/Pupil Transportation			4.33	
			C18095		0	41.66	
10 E 530 9700 62 5000 074 0000 0000			General Fund/Expenditures/District-Wide Support			41.66	
			C18281		0	24.73	
10 E 530 9700 62 5000 074 0000 0000			General Fund/Expenditures/District-Wide Support			24.73	
			C18475		0	9.33	
10 E 530 9700 63 5000 074 0000 0000			General Fund/Expenditures/District-Wide Support			9.33	
			C18476		0	26.69	
10 E 530 9700 62 5000 074 0000 0000			General Fund/Expenditures/District-Wide Support			26.69	
			C18492		0	4.33	
10 E 530 9900 53 5000 073 0000 0000			General Fund/Expenditures/Pupil Transportation			4.33	

Check Nbr	Vendor Name	Check Date	Invoice Number	Invoice Desc	PO Number	Invoice Amount	Check Amount
10 E 530 9700 63 5000 074 0000 0000			C18931	General Fund/Expenditures/District-Wide Support	0	76.34	
						76.34	
10 E 530 9700 62 5000 074 0000 0000			C19000	General Fund/Expenditures/District-Wide Support	0	5.56	
						5.56	
10 E 530 9700 62 5000 074 0000 0000			C19151	General Fund/Expenditures/District-Wide Support	0	15.96	
						15.96	
10 E 530 9700 64 5000 074 0000 0000			C19189	General Fund/Expenditures/District-Wide Support	0	12.55	
						12.55	
10 E 530 9900 53 5000 073 0000 0000			C19248	General Fund/Expenditures/Pupil Transportation	0	30.39	
						30.39	
10 E 530 9700 62 5000 074 0000 0000			C19452	General Fund/Expenditures/District-Wide Support	0	14.24	
						14.24	
10 E 530 9700 62 5000 074 0000 0000			C19454	General Fund/Expenditures/District-Wide Support	0	14.86	
						14.86	
10 E 530 9700 62 5000 074 0000 0000			C19455	General Fund/Expenditures/District-Wide Support	0	108.59	
						108.59	
10 E 530 9700 64 5000 074 0000 0000			C20054	General Fund/Expenditures/District-Wide Support	0	4.98	
						4.98	
10 E 530 9900 53 5000 073 0000 0000			C20056	General Fund/Expenditures/Pupil Transportation	0	13.73	
						13.73	
10 E 530 9700 63 5000 074 0000 0000			c20075	General Fund/Expenditures/District-Wide Support	0	47.11	
						47.11	
10 E 530 9700 62 5000 074 0000 0000			C20128	General Fund/Expenditures/District-Wide Support	0	48.84	
						48.84	
10 E 530 9700 62 5000 074 0000 0000			C20391	General Fund/Expenditures/District-Wide Support	0	14.11	
						14.11	
10 E 530 9700 64 5000 074 0000 0000			C20458	General Fund/Expenditures/District-Wide Support	0	13.02	
						13.02	
10 E 530 9700 62 5000 074 0000 0000			C20851	General Fund/Expenditures/District-Wide Support	0	65.47	
						65.47	
191730 HENAGER, MELLONY A		06/30/2017 JAN - MAY TRAVEL 17'			0	17.39	17.39
10 E 530 0100 26 8010 064 0000 0000				General Fund/Expenditures/Basic Education		17.39	
191731 HYATT, JULIE A		06/30/2017 STUDENT REP. GIFTS			0	22.22	22.22
10 E 530 9700 11 5000 071 0000 0000				General Fund/Expenditures/District-Wide Support		22.22	

Check Nbr	Vendor Name	Check Date	Invoice Number	Invoice Desc	PO Number	Invoice Amount	Check Amount
191732	IBS INCORPORATED	06/30/2017	644829-1		0	332.84	332.84
10 E 530 9900 53 5000 073 0000 0000			General Fund/Expenditures/Pupil Transportation			332.84	
191733	IPEVO	06/30/2017	00220170610000027	ipevo	7601600183	132.05	264.10
10 E 530 0149 27 5000 120 0000 0000			General Fund/Expenditures/Start-Up			143.41	
10 L 601 0000 00 0000 000 0000 0000			General Fund/Accounts Payable			-11.36	
			00220170610000081	Document Camera for New Classroom	7601600194	132.05	
10 L 601 0000 00 0000 000 0000 0000			General Fund/Accounts Payable			-11.36	
10 E 530 0149 27 5330 482 0000 0000			General Fund/Expenditures/Start-Up			143.41	
191734	IRRIGATION SPECIALISTS INC	06/30/2017	3196013-01		0	1,552.77	1,732.82
10 E 530 9700 63 5000 074 0000 0000			General Fund/Expenditures/District-Wide Support			1,552.77	
			3196358-01		0	37.40	
10 E 530 9700 63 5000 074 0000 0000			General Fund/Expenditures/District-Wide Support			37.40	
			3196578-01		0	29.27	
10 E 530 9700 63 5000 074 0000 0000			General Fund/Expenditures/District-Wide Support			29.27	
			3196841-01		0	113.38	
10 E 530 9700 63 5000 074 0000 0000			General Fund/Expenditures/District-Wide Support			113.38	
191735	JOHN BENNETT CREATIVE SERVICE	06/30/2017	4062-05		0	279.40	279.40
10 E 530 9800 44 5000 075 0000 0000			General Fund/Expenditures/Food Service			279.40	
191736	JOHNSTONE SUPPLY CO	06/30/2017	20345563-00		0	312.62	1,686.51
10 E 530 9700 64 5000 074 0000 0000			General Fund/Expenditures/District-Wide Support			312.62	
			20345636-00		0	913.75	
10 E 530 9700 64 5000 074 0000 0000			General Fund/Expenditures/District-Wide Support			913.75	
			20347266-00		0	460.14	
10 E 530 9700 64 5000 074 0000 0000			General Fund/Expenditures/District-Wide Support			460.14	
191737	JOSTENS	06/30/2017	1439	6 Blue Cords for Student of the Department-As	4501600141	51.05	51.05
10 E 530 0100 23 5200 450 0000 0000			General Fund/Expenditures/Basic Education			51.05	
191738	JR'S HEATING & AIR SERVICES	06/30/2017	6/1/2017		0	692.32	7,782.85
10 E 530 9700 64 7000 120 0000 0000			General Fund/Expenditures/District-Wide Support			692.32	
			6/12/2017	Portable 31 at KRV HVAC	7401600013	7,090.53	
10 E 530 9700 64 9000 074 0000 0000			General Fund/Expenditures/District-Wide Support			7,090.53	
191739	K C D A	06/30/2017	300164183	HOFSTAD - CLASS BUDGET	1201600078	130.44	5,038.21

Check Nbr	Vendor Name	Check Date	Invoice Number	Invoice Desc	PO Number	Invoice Amount	Check Amount
10 E 530 0115 27 5000 120 0000 0000				General Fund/Expenditures/1st Grade		130.44	
			300166201	CARLA WYATT	1101600063	42.54	
10 E 530 0114 27 5000 110 0000 0000				General Fund/Expenditures/Kindergarten		42.54	
			300168088	CHILDERS CLASSROOM	1201600060	27.98	
10 E 530 0100 27 5020 120 0000 0000				General Fund/Expenditures/Basic Education		23.40	
10 E 530 0114 27 5000 120 0000 0000				General Fund/Expenditures/Kindergarten		4.58	
			300168089	HOFSTAD - CLASS BUDGET	1201600078	57.38	
10 E 530 0115 27 5000 120 0000 0000				General Fund/Expenditures/1st Grade		57.38	
			300168090	WHITE - CLASS BUDGET	1201600109	173.88	
10 E 530 0115 27 5000 120 0000 0000				General Fund/Expenditures/1st Grade		173.88	
			300168091	COFFMAN CLASSROOM BUDGET	1201600063	15.86	
10 E 530 0115 27 5000 120 0000 0000				General Fund/Expenditures/1st Grade		15.86	
			300169075	Open PO for CTE Supplies	4561600000	558.18	
10 E 530 3160 27 5000 450 0000 0000				General Fund/Expenditures/Agriculture		195.36	
10 E 530 3161 27 5000 450 0000 0000				General Fund/Expenditures/Business		195.36	
10 E 530 3165 27 5000 450 0000 0000				General Fund/Expenditures/Home/Family		83.73	
10 E 530 3167 27 5000 450 0000 0000				General Fund/Expenditures/Technology Education		83.73	
			300169077	Open PO for CTE Supplies	4561600000	32.26	
10 E 530 3160 27 5000 450 0000 0000				General Fund/Expenditures/Agriculture		11.29	
10 E 530 3161 27 5000 450 0000 0000				General Fund/Expenditures/Business		11.29	
10 E 530 3165 27 5000 450 0000 0000				General Fund/Expenditures/Home/Family		4.84	
10 E 530 3167 27 5000 450 0000 0000				General Fund/Expenditures/Technology Education		4.84	
			300170199	BULK PAPER/OFFICE	1201600112	3,836.97	
10 E 530 0100 27 5020 120 0000 0000				General Fund/Expenditures/Basic Education		3,836.97	
			300171170	Class room Supplies for: Debbie Lemke Wendy Garrett Maggie Schwan	1101600067	25.03	
10 E 530 0114 27 5000 110 0000 0000				General Fund/Expenditures/Kindergarten		8.34	
10 E 530 0115 27 5000 110 0000 0000				General Fund/Expenditures/1st Grade		8.34	
10 E 530 0116 27 5000 110 0000 0000				General Fund/Expenditures/2nd Grade		8.35	
			300171188	CARLA WYATT	1101600063	14.85	
10 E 530 0114 27 5000 110 0000 0000				General Fund/Expenditures/Kindergarten		14.85	

Check Nbr	Vendor Name	Check Date	Invoice Number	Invoice Desc	PO Number	Invoice Amount	Check Amount
			300171301	Class room Supplies for: Debbie Lemke Wendy Garrett Maggie Schwan	1101600067	77.49	
10 E 530 0114 27 5000 110 0000 0000				General Fund/Expenditures/Kindergarten		25.83	
10 E 530 0115 27 5000 110 0000 0000				General Fund/Expenditures/1st Grade		25.83	
10 E 530 0116 27 5000 110 0000 0000				General Fund/Expenditures/2nd Grade		25.83	
			300171424	Open PO for CTE Supplies	4561600000	43.65	
10 E 530 3160 27 5000 450 0000 0000				General Fund/Expenditures/Agriculture		15.28	
10 E 530 3161 27 5000 450 0000 0000				General Fund/Expenditures/Business		15.28	
10 E 530 3165 27 5000 450 0000 0000				General Fund/Expenditures/Home/Family		6.55	
10 E 530 3167 27 5000 450 0000 0000				General Fund/Expenditures/Technology Education		6.54	
			300173120	Open PO for CTE Supplies	4561600000	1.70	
10 E 530 3160 27 5000 450 0000 0000				General Fund/Expenditures/Agriculture		0.59	
10 E 530 3161 27 5000 450 0000 0000				General Fund/Expenditures/Business		0.59	
10 E 530 3165 27 5000 450 0000 0000				General Fund/Expenditures/Home/Family		0.25	
10 E 530 3167 27 5000 450 0000 0000				General Fund/Expenditures/Technology Education		0.27	
191740 KARTHAUSER-BLAIR, KASEY L		06/30/2017	EXPO MARKERS		0	63.14	294.27
10 E 530 0100 27 5000 450 0000 0000				General Fund/Expenditures/Basic Education		63.14	
			FLOUR		0	37.44	
10 E 530 0100 27 5000 450 0000 0000				General Fund/Expenditures/Basic Education		37.44	
			SUPPLIES 6/12/17		0	193.69	
10 E 530 0100 27 5000 450 0000 0000				General Fund/Expenditures/Basic Education		193.69	
191741 KIRK, LINDA W		06/30/2017	JUNE 2017 TRAVEL		0	21.40	55.20
10 E 530 0100 26 8010 064 0000 0000				General Fund/Expenditures/Basic Education		21.40	
			POSTAGE 6/6/2017		0	33.80	
10 E 530 0100 26 5010 064 0000 0000				General Fund/Expenditures/Basic Education		33.80	
191742 LARSON, JOANNE L		06/30/2017	LADDER		0	54.28	54.28
10 E 530 0118 27 5000 130 0000 0000				General Fund/Expenditures/4th Grade		54.28	
191743 LINCOLN ELECTRIC CUTTING SYSTE		06/30/2017	906593099	Torchmate Plasma Cutting system	4561600041	907.81	26,729.15
10 E 530 3160 27 9000 450 0000 0000				General Fund/Expenditures/Agriculture		907.81	
			906596763	Torchmate Plasma Cutting system	4561600041	25,821.34	
10 L 601 0000 00 0000 000 0000 0000				General Fund/Accounts Payable		-2,220.64	
10 E 530 3160 27 9000 450 0000 0000				General Fund/Expenditures/Agriculture		28,041.98	

Check Nbr	Vendor Name	Check Date	Invoice Number	Invoice Desc	PO Number	Invoice Amount	Check Amount
191744	LINK, CENTURY	06/30/2017	6/6/2017		0	1,308.82	1,308.82
10 E 530 9700 65 7810 075 0000 0000				General Fund/Expenditures/District-Wide Support		55.07	
10 E 530 9700 65 7810 073 0000 0000				General Fund/Expenditures/District-Wide Support		52.46	
10 E 530 9700 65 7810 130 0000 0000				General Fund/Expenditures/District-Wide Support		57.95	
10 E 530 9700 65 7810 450 0000 0000				General Fund/Expenditures/District-Wide Support		56.57	
10 E 530 9700 65 7810 073 0000 0000				General Fund/Expenditures/District-Wide Support		65.83	
10 E 530 9700 65 7810 240 0000 0000				General Fund/Expenditures/District-Wide Support		0.00	
10 E 530 9700 65 7810 240 0000 0000				General Fund/Expenditures/District-Wide Support		55.07	
10 E 530 9700 65 7810 074 0000 0000				General Fund/Expenditures/District-Wide Support		0.00	
10 E 530 9700 65 7810 072 0000 0000				General Fund/Expenditures/District-Wide Support		169.71	
10 E 530 9700 65 7810 120 0000 0000				General Fund/Expenditures/District-Wide Support		110.14	
10 E 530 9700 65 7810 076 0000 0000				General Fund/Expenditures/District-Wide Support		28.28	
10 E 530 9700 65 7810 060 0000 0000				General Fund/Expenditures/District-Wide Support		28.29	
10 E 530 9700 65 7810 450 0000 0000				General Fund/Expenditures/District-Wide Support		247.10	
10 E 530 9700 65 7810 130 0000 0000				General Fund/Expenditures/District-Wide Support		55.07	
10 E 530 9700 65 7810 482 0000 0000				General Fund/Expenditures/District-Wide Support		110.14	
10 E 530 9700 65 7810 063 0000 0000				General Fund/Expenditures/District-Wide Support		56.57	
10 E 530 9700 65 7810 120 0000 0000				General Fund/Expenditures/District-Wide Support		0.00	
10 E 530 9700 65 7810 240 0000 0000				General Fund/Expenditures/District-Wide Support		55.07	
10 E 530 9700 65 7810 110 0000 0000				General Fund/Expenditures/District-Wide Support		105.50	
191745	LINK, CENTURY	06/30/2017	320489928 6/2/17		0	62.63	62.63
10 E 530 9700 65 7810 072 0000 0000				General Fund/Expenditures/District-Wide Support		62.63	
191746	LOURDES OCCUPATIONAL HEALTH CE	06/30/2017	51470		0	90.00	90.00
10 E 530 9900 52 7960 073 0000 0000				General Fund/Expenditures/Pupil Transportation		90.00	
191747	LOURDES	06/30/2017	6/10/2017		0	10,764.12	10,764.12
10 E 530 2100 27 7000 063 0000 0000				General Fund/Expenditures/Spec Ed - State		10,764.12	
191748	LOWRY, MICHELLE	06/30/2017	0000010		0	3,000.00	3,000.00
10 E 530 2100 26 7000 063 0000 0000				General Fund/Expenditures/Spec Ed - State		3,000.00	
191749	M & M BOLT CO INC	06/30/2017	303129		0	40.76	40.76
10 E 530 9900 53 5000 073 0000 0000				General Fund/Expenditures/Pupil Transportation		40.76	
191750	MALDONADO, GUADALUPE	06/30/2017	61217		0	72.20	72.20
10 E 530 0100 21 7120 060 0000 0000				General Fund/Expenditures/Basic Education		72.20	
191751	MANSFIELD ALARM	06/30/2017	216589		0	380.10	380.10
10 E 530 9700 64 7910 240 0000 0000				General Fund/Expenditures/District-Wide Support		380.10	
191752	MAVERICKLABEL.COM	06/30/2017	115798-V	Asset tag lables	7601600189	446.15	446.15
10 E 530 9730 72 5000 076 0000 0000				General Fund/Expenditures/Tech Coordinator - Office		446.15	
191753	MCMURTREY, JENNIFER L	06/30/2017	FIELD DAY		0	228.62	306.80
10 E 530 0188 27 5000 450 0000 0000				General Fund/Expenditures/PBIS Incentives		228.62	
				WATER BALLOONS	0	78.18	
10 E 530 0188 27 5000 450 0000 0000				General Fund/Expenditures/PBIS Incentives		78.18	

Check Nbr	Vendor Name	Check Date	Invoice Number	Invoice Desc	PO Number	Invoice Amount	Check Amount
191754	MEADOW GOLD DAIRY	06/30/2017	135009665		0	91.13	91.13
10 E 530 9800 42 5410 075 0000 0000			General Fund/Expenditures/Food Service			91.13	
191755	MEDRANO, ULISES	06/30/2017	BOOK REFUND		0	11.00	11.00
10 R 960 0000 26 2600 110 0000 0000			General Fund/Revenues/Program 00			11.00	
191756	MEJIA, CRYSTAL	06/30/2017	LUNCH REIM.		0	16.00	16.00
10 R 960 9800 22 2298 110 0000 0000			General Fund/Revenues/Food Services			16.00	
191757	MID-AMERICAN RESEARCH CHEMICAL	06/30/2017	0608171-IN		0	680.89	680.89
10 E 530 9700 63 5000 074 0000 0000			General Fund/Expenditures/District-Wide Support			680.89	
191758	MILLER, DANIELLE M	06/30/2017	JAN-JUNE 2017 TRAVEL		0	163.98	163.98
10 E 530 2200 26 8010 063 0000 0000			General Fund/Expenditures/Spec Ed Infants & Toddlers			163.98	
191759	MOON SECURITY SERVICES INC	06/30/2017	879502	2016/2017 Annual contract for: video and monitoring of PHS facilities	7201600009	249.06	249.06
10 E 530 9700 64 7910 450 0000 0000			General Fund/Expenditures/District-Wide Support			249.06	
191760	NOR-PAC SEATING CO, INC	06/30/2017	5829		0	369.24	369.24
10 E 530 9700 64 5000 450 0000 0000			General Fund/Expenditures/District-Wide Support			369.24	
191761	Vendor Continued Void	06/30/2017					0.00
191762	OFFICE DEPOT INC	06/30/2017	931512660001		1201600088	113.38	1,758.14
10 E 530 0112 27 5000 120 0000 0000			General Fund/Expenditures/Specialist			113.38	
			932003786001	BATES	1201600073	11.71	
10 E 530 0114 27 5000 120 0000 0000			General Fund/Expenditures/Kindergarten			11.71	
			932003787001	BATES	1201600073	31.45	
10 E 530 0114 27 5000 120 0000 0000			General Fund/Expenditures/Kindergarten			31.45	
			932003788002	BATES	1201600073	38.43	
10 E 530 0114 27 5000 120 0000 0000			General Fund/Expenditures/Kindergarten			38.43	
			932506125001	TOOP - CLASSROOM BUDGET	1201600090	82.98	
10 E 530 0116 27 5000 120 0000 0000			General Fund/Expenditures/2nd Grade			82.98	
			932808888001	FLORES - CLASS BUDGET	1201600094	32.46	
10 E 530 0112 27 5000 120 0000 0000			General Fund/Expenditures/Specialist			32.46	
			932810681001	FLORES - CLASS BUDGET	1201600094	110.59	
10 E 530 0112 27 5000 120 0000 0000			General Fund/Expenditures/Specialist			110.59	

Check Nbr	Vendor Name	Check Date	Invoice Number	Invoice Desc	PO Number	Invoice Amount	Check Amount
			932834386001	AULD/MERRICK - CLASS BUDGET	1201600097	152.36	
10 E 530 0112 27 5000 120 0000 0000				General Fund/Expenditures/Specialist		123.63	
10 E 530 0114 27 5000 120 0000 0000				General Fund/Expenditures/Kindergarten		28.73	
			932834386002	AULD/MERRICK - CLASS BUDGET	1201600097	12.29	
10 E 530 0112 27 5000 120 0000 0000				General Fund/Expenditures/Specialist		9.97	
10 E 530 0114 27 5000 120 0000 0000				General Fund/Expenditures/Kindergarten		2.32	
			932834501001	AULD/MERRICK - CLASS BUDGET	1201600097	54.63	
10 E 530 0112 27 5000 120 0000 0000				General Fund/Expenditures/Specialist		44.33	
10 E 530 0114 27 5000 120 0000 0000				General Fund/Expenditures/Kindergarten		10.30	
			932834502001	AULD/MERRICK - CLASS BUDGET	1201600097	19.74	
10 E 530 0112 27 5000 120 0000 0000				General Fund/Expenditures/Specialist		9.87	
10 E 530 0114 27 5000 120 0000 0000				General Fund/Expenditures/Kindergarten		9.87	
			932834503002	AULD/MERRICK - CLASS BUDGET	1201600097	4.66	
10 E 530 0112 27 5000 120 0000 0000				General Fund/Expenditures/Specialist		3.78	
10 E 530 0114 27 5000 120 0000 0000				General Fund/Expenditures/Kindergarten		0.88	
			932834505001	AULD/MERRICK - CLASS BUDGET	1201600097	10.31	
10 E 530 0112 27 5000 120 0000 0000				General Fund/Expenditures/Specialist		8.37	
10 E 530 0114 27 5000 120 0000 0000				General Fund/Expenditures/Kindergarten		1.94	
			932844982001	LEGARD - CLASS BUDGET	1201600098	163.40	
10 E 530 0112 27 5000 120 0000 0000				General Fund/Expenditures/Specialist		163.40	
			933081194001	Start up for new KRV Classroom	7601600185	134.11	
10 E 530 0149 27 5000 120 0000 0000				General Fund/Expenditures/Start-Up		134.11	
			933206535001	BATES	1201600072	107.05	
10 E 530 0114 27 5000 120 0000 0000				General Fund/Expenditures/Kindergarten		107.05	
			933206536001	BATES	1201600072	59.55	
10 E 530 0114 27 5000 120 0000 0000				General Fund/Expenditures/Kindergarten		59.55	
			933207078001	BATES	1201600072	20.63	
10 E 530 0114 27 5000 120 0000 0000				General Fund/Expenditures/Kindergarten		20.63	
			9333554276001	BISHOP/AULD - CLASS BUDGET	1201600100	108.70	
10 E 530 0112 27 5000 120 0000 0000				General Fund/Expenditures/Specialist		84.19	

Check Nbr	Vendor Name	Check Date	Invoice Number	Invoice Desc	PO Number	Invoice Amount	Check Amount
10 E 530 0116 27 5000 120 0000 0000				General Fund/Expenditures/2nd Grade		24.51	
			933598200001		1201600105	191.03	
10 E 530 0116 27 5000 120 0000 0000				General Fund/Expenditures/2nd Grade		191.03	
			933598326001		1201600105	123.41	
10 E 530 0112 27 5000 120 0000 0000				General Fund/Expenditures/Specialist		10.60	
10 E 530 0116 27 5000 120 0000 0000				General Fund/Expenditures/2nd Grade		112.81	
			933613198001	COUNSELOR	1201600108	119.45	
10 E 530 0100 24 5000 120 0000 0000				General Fund/Expenditures/Basic Education		119.45	
			933631677001	CHILDERS - CLASS BUDGET	1201600110	55.82	
10 E 530 0114 27 5000 120 0000 0000				General Fund/Expenditures/Kindergarten		55.82	
191763 ORIENTAL TRADING CO		06/30/2017	684180725-01	PBIS End of the Year Celebration-as	4501600138	441.96	554.33
10 E 530 0188 27 5000 450 0000 0000				General Fund/Expenditures/PBIS Incentives		479.97	
10 L 601 0000 00 0000 000 0000 0000				General Fund/Accounts Payable		-38.01	
			684180907-01	Carla Wyatt Class Supplies	1101600062	112.37	
10 E 530 0114 27 5000 110 0000 0000				General Fund/Expenditures/Kindergarten		122.03	
10 L 601 0000 00 0000 000 0000 0000				General Fund/Accounts Payable		-9.66	
191764 OSPI - CHILD NUTRITION SERVICE		06/30/2017	19430		0	11,957.83	11,957.83
10 E 530 9800 42 7000 075 0000 0000				General Fund/Expenditures/Food Service		11,957.83	
191765 OXARC INC		06/30/2017	30059329	Open PO for Metal Shop Supplies	4561600002	26.98	26.98
10 E 530 3160 27 5000 450 0000 0000				General Fund/Expenditures/Agriculture		26.98	
191766 PACIFIC OFFICE AUTOMATION		06/30/2017	751954	COPIER STAPLES	1201600089	129.23	1,681.12
10 E 530 0100 27 5000 120 0000 0000				General Fund/Expenditures/Basic Education		129.23	
			791577 2	Toner for Printers	4561600037	1,551.89	
10 E 530 3161 27 5000 450 0000 0000				General Fund/Expenditures/Business		1,551.89	
191767 PACIFIC OFFICE AUTOMATION		06/30/2017	762327	Toner cartridge for Main Office and Library	4501600069	248.69	248.69
10 E 530 0100 27 5000 450 0000 0000				General Fund/Expenditures/Basic Education		248.69	
191768 PHASE 2 ELECTRONIC INC		06/30/2017	P2-4821.1F		0	588.31	588.31
10 E 530 9700 64 7000 450 0000 0000				General Fund/Expenditures/District-Wide Support		588.31	
191769 PHILLIPS66/CONOCO/76		06/30/2017	6/8/2017		0	145.15	145.15

Check Nbr	Vendor Name	Check Date	Invoice Number	Invoice Desc	PO Number	Invoice Amount	Check Amount
10 E 530 9700 75 5000 073 0000 0000				General Fund/Expenditures/District-Wide Support		145.15	
191770	PMH MEDICAL CENTER	06/30/2017	06/06/2017		0	612.00	612.00
10 E 530 2100 26 7000 063 0000 0000				General Fund/Expenditures/Spec Ed - State		612.00	
191771	POWELL-CHRISTENSEN, INC	06/30/2017	1719482		0	219.53	219.53
10 E 530 9900 53 5950 073 0000 0000				General Fund/Expenditures/Pupil Transportation		219.53	
191772	PROSSER CHAMBER OF COMMERCE	06/30/2017	20203		0	75.00	75.00
10 E 530 9700 12 7390 071 0000 0000				General Fund/Expenditures/District-Wide Support		75.00	
191773	PROSSER NAPA	06/30/2017	466319		0	89.00	917.88
10 E 530 9900 53 5000 073 0000 0000				General Fund/Expenditures/Pupil Transportation		89.00	
			466320		0	170.72	
10 E 530 9900 53 5000 073 0000 0000				General Fund/Expenditures/Pupil Transportation		170.72	
			466572		0	16.51	
10 E 530 9900 53 5000 073 0000 0000				General Fund/Expenditures/Pupil Transportation		16.51	
			466753		0	21.12	
10 E 530 9900 53 5000 073 0000 0000				General Fund/Expenditures/Pupil Transportation		21.12	
			466757		0	39.09	
10 E 530 9900 53 5000 073 0000 0000				General Fund/Expenditures/Pupil Transportation		39.09	
			466795		0	23.46	
10 E 530 9900 53 5000 073 0000 0000				General Fund/Expenditures/Pupil Transportation		23.46	
			466810		0	145.61	
10 E 530 9900 53 5000 073 0000 0000				General Fund/Expenditures/Pupil Transportation		145.61	
			467069		0	28.96	
10 E 530 9900 53 5000 073 0000 0000				General Fund/Expenditures/Pupil Transportation		28.96	
			467099		0	11.57	
10 E 530 9900 53 5000 073 0000 0000				General Fund/Expenditures/Pupil Transportation		11.57	
			467100		0	87.01	
10 E 530 9900 53 5000 073 0000 0000				General Fund/Expenditures/Pupil Transportation		87.01	
			467101		0	10.70	
10 E 530 9900 53 5000 073 0000 0000				General Fund/Expenditures/Pupil Transportation		10.70	
			467105		0	-11.57	
10 E 530 9900 53 5000 073 0000 0000				General Fund/Expenditures/Pupil Transportation		-11.57	
			467190		0	177.54	
10 E 530 9700 64 5000 074 0000 0000				General Fund/Expenditures/District-Wide Support		177.54	

Check Nbr	Vendor Name	Check Date	Invoice Number	Invoice Desc	PO Number	Invoice Amount	Check Amount
			467322		0	23.52	
10 E 530 9900 53 5000 073 0000 0000			General Fund/Expenditures/Pupil Transportation			23.52	
			467408		0	17.79	
10 E 530 9900 53 5000 073 0000 0000			General Fund/Expenditures/Pupil Transportation			17.79	
			467698		0	46.68	
10 E 530 9700 64 5000 074 0000 0000			General Fund/Expenditures/District-Wide Support			46.68	
			467786		0	4.66	
10 E 530 9900 53 5000 073 0000 0000			General Fund/Expenditures/Pupil Transportation			4.66	
			467849		0	15.51	
10 E 530 9900 53 5000 073 0000 0000			General Fund/Expenditures/Pupil Transportation			15.51	
191774 PROSSER RENTALS		06/30/2017	11162		0	81.45	206.34
10 E 530 9700 62 5000 074 0000 0000			General Fund/Expenditures/District-Wide Support			81.45	
			11246		0	124.89	
10 E 530 9700 62 5000 074 0000 0000			General Fund/Expenditures/District-Wide Support			124.89	
191775 RAINWATER INC		06/30/2017	058255		0	42.00	66.00
10 E 530 2100 21 5000 063 0000 0000			General Fund/Expenditures/Spec Ed - State			42.00	
			058327	2016-2017 Annual contract Renewal for Curriculum/Technology/Migrant Offices	6001600024	24.00	
10 E 530 0100 21 7000 060 0000 0000			General Fund/Expenditures/Basic Education			8.00	
10 E 530 5320 24 5000 060 0000 0000			General Fund/Expenditures/Migrant Ed			8.00	
10 E 530 9730 72 7000 076 0000 0000			General Fund/Expenditures/Tech Coordinator - Office			8.00	
191776 RDO EQUIPMENT		06/30/2017	p30083		0	235.82	546.87
10 E 530 9700 62 5000 074 0000 0000			General Fund/Expenditures/District-Wide Support			235.82	
			P36244		0	311.05	
10 E 530 9700 62 5000 074 0000 0000			General Fund/Expenditures/District-Wide Support			311.05	
191777 REALLY GOOD STUFF, INC		06/30/2017	5968523	Carla Wyatt Class Supplies	1101600061	115.45	335.73
10 E 530 0114 27 5000 110 0000 0000			General Fund/Expenditures/Kindergarten			125.38	
10 L 601 0000 00 0000 000 0000 0000			General Fund/Accounts Payable			-9.93	
			5973359	FLORES - CLASS BUDGET	1201600095	102.67	
10 E 530 0112 27 5000 120 0000 0000			General Fund/Expenditures/Specialist			111.50	
10 L 601 0000 00 0000 000 0000 0000			General Fund/Accounts Payable			-8.83	

Check Nbr	Vendor Name	Check Date	Invoice Number	Invoice Desc	PO Number	Invoice Amount	Check Amount
			5974292	LEGARD - CLASS BUDGET	1201600106	117.61	
10 E 530 0112 27 5000 120 0000 0000			General Fund/Expenditures/Specialist			127.72	
10 L 601 0000 00 0000 000 0000 0000			General Fund/Accounts Payable			-10.11	
191778 REYES, MARTHA		06/30/2017	MAY & JUNE 2017		0	527.51	527.51
10 E 530 6500 31 8030 060 0000 0000			General Fund/Expenditures/State Trans Bilingual			527.51	
191779 ROSE CITY AWNING CO		06/30/2017	1002444		0	149.30	149.30
10 E 530 9700 62 5000 074 0000 0000			General Fund/Expenditures/District-Wide Support			162.14	
10 L 601 0000 00 0000 000 0000 0000			General Fund/Accounts Payable			-12.84	
191780 RR BOOKS		06/30/2017	23279	Just Right Books for New First Spanish - KRV	6001600113	60.23	60.23
10 E 530 0187 27 5070 120 0000 0000			General Fund/Expenditures/Text Adoption			65.41	
10 L 601 0000 00 0000 000 0000 0000			General Fund/Accounts Payable			-5.18	
191781 SAFEWAY		06/30/2017	430661-041017-1593		0	25.62	159.51
10 E 530 9800 42 5430 075 0000 0000			General Fund/Expenditures/Food Service			25.62	
			720673-031017-1593		0	38.66	
10 E 530 9800 42 5430 075 0000 0000			General Fund/Expenditures/Food Service			38.66	
			724014-031717-1593		0	31.44	
10 E 530 9800 42 5430 075 0000 0000			General Fund/Expenditures/Food Service			31.44	
			91001230492		0	26.99	
10 E 530 9700 11 5000 071 0000 0000			General Fund/Expenditures/District-Wide Support			26.99	
			93001230311		0	36.80	
10 E 530 9700 11 5000 071 0000 0000			General Fund/Expenditures/District-Wide Support			36.80	
191782 SCHETKY NW SALES INC		06/30/2017	1312		0	219.07	289.37
10 E 530 9900 53 5000 073 0000 0000			General Fund/Expenditures/Pupil Transportation			219.07	
			1417		0	39.91	
10 E 530 9900 53 5000 073 0000 0000			General Fund/Expenditures/Pupil Transportation			39.91	
			1459		0	30.39	
10 E 530 9900 53 5000 073 0000 0000			General Fund/Expenditures/Pupil Transportation			30.39	
191783 SCHOLASTIC TEACHER RESOURCES		06/30/2017	15232423	Books for Sandy Haddow's Classroom	1101600064	58.51	58.51
10 E 530 0114 27 5000 110 0000 0000			General Fund/Expenditures/Kindergarten			58.51	
191784 SCHOOL DIST #116 REVOLV FUND		06/30/2017	4512		0	150.00	150.00
10 E 530 9700 12 5000 071 0000 0000			General Fund/Expenditures/District-Wide Support			150.00	

Check Nbr	Vendor Name	Check Date	Invoice Number	Invoice Desc	PO Number	Invoice Amount	Check Amount
191785	SCHOOL SPECIALITY	06/30/2017	208118324957	NEW 2ND GRADE CLASSROOM	1201600085	506.25	506.25
10 E 530 0149 27 5300 120 0000 0000			General Fund/Expenditures/Start-Up			506.25	
191786	SHULTZ, SHAWN L	06/30/2017	MAY 2017 ESD		0	128.40	128.40
10 E 530 9730 72 8030 076 0000 0000			General Fund/Expenditures/Tech Coordinator - Office			128.40	
191787	SILVA, SIENNA RANA	06/30/2017	PRESCOTT TRAVEL		0	81.32	81.32
10 E 530 5500 31 8030 120 0000 0000			General Fund/Expenditures/State Learning Assistance			81.32	
191788	SIX ROBBLEES INC	06/30/2017	3-635577-1		0	175.32	337.88
10 E 530 9900 53 5000 073 0000 0000			General Fund/Expenditures/Pupil Transportation			175.32	
			3-637125		0	56.74	
10 E 530 9900 53 5000 073 0000 0000			General Fund/Expenditures/Pupil Transportation			56.74	
			3-637706		0	105.82	
10 E 530 9900 53 5000 073 0000 0000			General Fund/Expenditures/Pupil Transportation			105.82	
191789	SMITH, SHELLY I	06/30/2017	book refund		0	18.00	18.00
10 R 960 0000 26 2600 110 0000 0000			General Fund/Revenues/Program 00			18.00	
191790	STARK, NANETTE L	06/30/2017	NAT. BOARDS 2017		0	200.00	200.00
10 E 530 0151 31 7000 450 0000 0000			General Fund/Expenditures/Staff Dev-PEA Allocation			200.00	
191791	STATE AUDITOR'S OFFICE	06/30/2017	L120598		0	5,883.29	5,883.29
10 E 530 9700 11 7020 071 0000 0000			General Fund/Expenditures/District-Wide Support			5,883.29	
191792	SUPPLYWORKS	06/30/2017	400480828		0	5,007.17	11,701.29
10 E 530 9700 63 5000 074 0000 0000			General Fund/Expenditures/District-Wide Support			5,007.17	
			400900981		0	137.10	
10 E 530 9700 63 5000 074 0000 0000			General Fund/Expenditures/District-Wide Support			137.10	
			401175658		0	3,451.87	
10 E 530 9700 63 5000 074 0000 0000			General Fund/Expenditures/District-Wide Support			3,451.87	
			401843230		0	27.92	
10 E 530 9700 63 5000 074 0000 0000			General Fund/Expenditures/District-Wide Support			27.92	
			401843248		0	929.92	
10 E 530 9700 63 5000 074 0000 0000			General Fund/Expenditures/District-Wide Support			929.92	
			402101059		0	31.67	
10 E 530 9700 63 5000 074 0000 0000			General Fund/Expenditures/District-Wide Support			31.67	
			402235402		0	5.10	
10 E 530 9700 63 5000 074 0000 0000			General Fund/Expenditures/District-Wide Support			5.10	
			402383715		0	161.27	

Check Nbr	Vendor Name	Check Date	Invoice Number	Invoice Desc	PO Number	Invoice Amount	Check Amount
10 E 530 9700 63 5000 074 0000 0000				General Fund/Expenditures/District-Wide Support		161.27	
			402383723		0	1,949.27	
10 E 530 9700 63 5000 074 0000 0000				General Fund/Expenditures/District-Wide Support		1,949.27	
191793 T & M BOS, INC		06/30/2017	21972		0	228.06	228.06
10 E 530 9800 44 5970 075 0000 0000				General Fund/Expenditures/Food Service		228.06	
191794 TCWOA		06/30/2017	2016-10		0	420.48	420.48
10 E 530 0100 28 5000 450 0000 0000				General Fund/Expenditures/Basic Education		420.48	
191795 TERRY'S DAIRY		06/30/2017	179065		0	195.22	7,974.64
10 E 530 9800 42 5410 075 0000 0000				General Fund/Expenditures/Food Service		195.22	
			179068		0	280.54	
10 E 530 9800 42 5410 075 0000 0000				General Fund/Expenditures/Food Service		280.54	
			179070		0	866.05	
10 E 530 9800 42 5410 075 0000 0000				General Fund/Expenditures/Food Service		866.05	
			180298		0	170.94	
10 E 530 9800 42 5410 075 0000 0000				General Fund/Expenditures/Food Service		170.94	
			180307		0	473.80	
10 E 530 9800 42 5410 075 0000 0000				General Fund/Expenditures/Food Service		473.80	
			180319		0	195.36	
10 E 530 9800 42 5410 075 0000 0000				General Fund/Expenditures/Food Service		195.36	
			180786		0	195.22	
10 E 530 9800 42 5410 075 0000 0000				General Fund/Expenditures/Food Service		195.22	
			180788		0	244.20	
10 E 530 9800 42 5410 075 0000 0000				General Fund/Expenditures/Food Service		244.20	
			180789		0	874.06	
10 E 530 9800 42 5410 075 0000 0000				General Fund/Expenditures/Food Service		874.06	
			182408		0	351.20	
10 E 530 9800 42 5410 075 0000 0000				General Fund/Expenditures/Food Service		351.20	
			182412		0	158.59	
10 E 530 9800 42 5410 075 0000 0000				General Fund/Expenditures/Food Service		158.59	
			182777		0	195.22	
10 E 530 9800 42 5410 075 0000 0000				General Fund/Expenditures/Food Service		195.22	
			182778		0	317.24	
10 E 530 9800 42 5410 075 0000 0000				General Fund/Expenditures/Food Service		317.24	

Check Nbr	Vendor Name	Check Date	Invoice Number	Invoice Desc	PO Number	Invoice Amount	Check Amount
10 E 530 9800 42 5410 075 0000 0000			182779	General Fund/Expenditures/Food Service	0	825.08	825.08
10 E 530 9800 42 5410 075 0000 0000			184345	General Fund/Expenditures/Food Service	0	195.14	195.14
10 E 530 9800 42 5410 075 0000 0000			184346	General Fund/Expenditures/Food Service	0	414.49	414.49
10 E 530 9800 42 5410 075 0000 0000			184349	General Fund/Expenditures/Food Service	0	182.93	182.93
10 E 530 9800 42 5410 075 0000 0000			185162	General Fund/Expenditures/Food Service	0	558.77	558.77
10 E 530 9800 42 5410 075 0000 0000			185163	General Fund/Expenditures/Food Service	0	231.77	231.77
10 E 530 9800 42 5410 075 0000 0000			185164	General Fund/Expenditures/Food Service	0	195.14	195.14
10 E 530 9800 42 5410 075 0000 0000			186229	General Fund/Expenditures/Food Service	0	207.35	207.35
10 E 530 9800 42 5410 075 0000 0000			186230	General Fund/Expenditures/Food Service	0	195.14	195.14
10 E 530 9800 42 5410 075 0000 0000			186295	General Fund/Expenditures/Food Service	0	451.19	451.19
191796 THE MATH LEARNING CENTER		06/30/2017	BA26419-IN	Bridges Replacement Manipulatives for KRV	6001600092	923.82	1,838.34
10 E 530 0187 27 5070 120 0000 0000				General Fund/Expenditures/Text Adoption		923.82	
10 E 530 0187 27 5070 110 0000 0000			BA26420-IN	Bridges Replacement Manipulatives for Whitstran	6001600093	232.40	
10 E 530 0187 27 5070 110 0000 0000				General Fund/Expenditures/Text Adoption		232.40	
10 E 530 0187 27 5070 110 0000 0000			BA26484-IN	Math Bridges Start up Spanish for First Grade KRV	6001600089	682.12	
10 E 530 0187 27 5070 110 0000 0000				General Fund/Expenditures/Text Adoption		682.12	
191797 THE SUPPLY COMPANY LLC		06/30/2017	425668	General Fund/Expenditures/Pupil Transportation	0	17.53	17.53
10 E 530 9900 52 5000 073 0000 0000						17.53	

Check Nbr	Vendor Name	Check Date	Invoice Number	Invoice Desc	PO Number	Invoice Amount	Check Amount
191798	TINSLEY, KARLENE	06/30/2017	REPLACE BOOKS		0	174.44	174.44
10 E 530 0100 22 5060 450 0000 0000			General Fund/Expenditures/Basic Education			174.44	
191799	TUBAC, ELIZABETH C	06/30/2017	BRIDGES		0	94.46	94.46
10 E 530 7930 27 5000 450 0000 0000			General Fund/Expenditures/BRIDGE TO COLLEGE			94.46	
191800	ULINE	06/30/2017	87428318		0	1,628.76	1,628.76
10 E 530 9800 44 5300 075 0000 0000			General Fund/Expenditures/Food Service			1,628.76	
191801	VALLEY SPRAY	06/30/2017	11606		0	271.50	271.50
10 E 530 3160 27 7000 450 0000 0000			General Fund/Expenditures/Agriculture			271.50	
191802	VALLEY WATER SERVICES	06/30/2017	11704		0	187.50	187.50
10 E 530 9700 64 7000 110 0000 0000			General Fund/Expenditures/District-Wide Support			187.50	
191803	WABE	06/30/2017	298	conference registrations	6001600058	975.00	975.00
10 E 530 6400 27 7000 060 0000 0000			General Fund/Expenditures/Limited English Proficien			975.00	
191804	WAL-MART COMMUNITY	06/30/2017	715200665486	FCS Supplies	2401600088	72.43	184.49
10 R 960 0000 21 2100 240 0000 0000			General Fund/Revenues/Program 00			72.43	
			715300413206	FCS Supplies	2401600088	46.06	
10 R 960 0000 21 2100 240 0000 0000			General Fund/Revenues/Program 00			46.06	
			715900759656	FCS Supplies	2401600088	66.00	
10 R 960 0000 21 2100 240 0000 0000			General Fund/Revenues/Program 00			66.00	
191805	WASBO	06/30/2017	200004366	2016-2017 WASBO Training- Sept 15th 2016, B. Bailey, Angela Skeen, Laura Bachofner	4501600018	400.00	400.00
10 E 530 0100 27 5000 450 0000 0000			General Fund/Expenditures/Basic Education			400.00	
191806	WEBER, KATHLEEN K	06/30/2017	RAA SUPPLIES		0	43.75	43.75
10 E 530 5101 27 5000 240 0000 0000			General Fund/Expenditures/Title I -Parent Inv.			43.75	
191807	WHITE, MELINDA J	06/30/2017	MAGNETS		0	10.85	10.85
10 E 530 0100 21 5000 060 0000 0000			General Fund/Expenditures/Basic Education			10.85	
191808	WORTHINGTON DIRECT	06/30/2017	INV276575PROO25	Chairs/Dry Erase Tables/Locking Casters/Armless Fabric Seat	4501600124	1,515.14	1,515.14
10 E 530 0160 27 5000 450 0000 0000			General Fund/Expenditures/Donation Expenditures			1,645.44	
10 L 601 0000 00 0000 000 0000 0000			General Fund/Accounts Payable			-130.30	
191809	WSIPC	06/30/2017	90 - WASWUG	WASWUG Conference	7601600192	275.00	275.00

Check Nbr	Vendor Name	Check Date	Invoice Number	Invoice Desc	PO Number	Invoice Amount	Check Amount
10 E 530 9730 72 8030 076 0000 0000				General Fund/Expenditures/Tech Coordinator - Office		275.00	
191810	YAKIMA BINDERY	06/30/2017	254839		0	22.26	22.26
10 E 530 9700 13 5000 072 0000 0000				General Fund/Expenditures/District-Wide Support		22.26	
191811	YAKIMA HERALD-REPUBLIC	06/30/2017	739569	2016-2017 Open PO for Job postings	7201600013	372.64	372.64
10 E 530 9700 14 7050 072 0000 0000				General Fund/Expenditures/District-Wide Support		372.64	
191812	ZARAGOZA, MARIA	06/30/2017	BOOK REFUND		0	6.00	6.00
10 R 960 0000 26 2600 110 0000 0000				General Fund/Revenues/Program 00		6.00	
				142 Computer	Check(s) For a Total of		269,727.62

The following vouchers, as audited and certified by the Auditing Officer as required by RCW 42.24.080, and those expense reimbursement claims certified as required by RCW 42.24.090, are approved for payment. Those payments have been recorded on this listing which has been made available to the board.

As of June 27, 2017, the board, by a _____ vote, approves payments, totaling \$56,775.99. The payments are further identified in this document.

Total by Payment Type for Cash Account, CP WARRANTS PAYABLE:
Warrant Numbers 200000013 through 200000015, totaling \$56,775.99

Secretary _____	Board Member _____
Board Member _____	Board Member _____
Board Member _____	Board Member _____

Check Nbr	Vendor Name	Check Date	Check Amount
200000013	ARCHITECTS WEST, P.A.	06/30/2017	55,299.49
200000014	KETCHUM ENTERPRISES, INC	06/30/2017	1,363.00
200000015	TRI-CITY HERALD	06/30/2017	113.50

3	Computer	Check(s) For a Total of	56,775.99
---	----------	-------------------------	-----------

Check Nbr	Vendor Name	Check Date	Invoice Number	Invoice Desc	PO Number	Invoice Amount	Check Amount
200000013	ARCHITECTS WEST, P.A.	06/30/2017	9101		0	15,052.49	55,299.49
20 E 530 0013 21 7010 100 0450 0000				Capital Projects/Expenditures/PHS NEW CONSTRUCTION		15,052.49	
			9103		0	40,247.00	
20 E 530 0013 21 7030 100 0450 0000				Capital Projects/Expenditures/PHS NEW CONSTRUCTION		40,247.00	
200000014	KETCHUM ENTERPRISES, INC	06/30/2017	641		0	1,363.00	1,363.00
20 E 530 0013 21 7000 100 0450 0000				Capital Projects/Expenditures/PHS NEW CONSTRUCTION		1,363.00	
200000015	TRI-CITY HERALD	06/30/2017	0003086999		0	113.50	113.50
20 E 530 0013 21 7050 100 0450 0000				Capital Projects/Expenditures/PHS NEW CONSTRUCTION		113.50	
			3	Computer	Check(s) For a Total of		56,775.99

The following vouchers, as audited and certified by the Auditing Officer as required by RCW 42.24.080, and those expense reimbursement claims certified as required by RCW 42.24.090, are approved for payment. Those payments have been recorded on this listing which has been made available to the board.

As of June 27, 2017, the board, by a _____ vote, approves payments, totaling \$73,892.34. The payments are further identified in this document.

Total by Payment Type for Cash Account, ASB WARRANTS PAYABLE:
Warrant Numbers 185002 through 185044, totaling \$73,892.34

Secretary _____	Board Member _____
Board Member _____	Board Member _____
Board Member _____	Board Member _____

Check Nbr	Vendor Name	Check Date	Check Amount
185002	A & A MOTORCOACH	06/30/2017	11,854.83
185003	BANK, U S	06/30/2017	3,846.88
185004	BILL SPEIDEL'S UNDERGROUND TOU	06/30/2017	366.00
185005	BSN SPORTS	06/30/2017	2,358.81
185006	CHANNEL, LYNN	06/30/2017	200.00
185007	CITY OF PROSSER	06/30/2017	500.00
185008	COLGREN, SUZANNE I	06/30/2017	61.25
185009	COSTCO	06/30/2017	582.91
185010	COX, TOBY W	06/30/2017	4,627.66
185011	DOMINO'S PIZZA PROSSER	06/30/2017	32.58
185012	DOUBLE D TROPHIES	06/30/2017	25.99
185013	EPCO INC / IN STITCHES	06/30/2017	162.90
185014	FOOD DEPOT	06/30/2017	180.52
185015	GAMEWORKS SEATTLE	06/30/2017	1,779.45
185016	HUMBERSTAD, ROBIN ELISE	06/30/2017	114.07
185017	HURT, TRACY L	06/30/2017	255.00
185018	IMAGE MARKET	06/30/2017	3,122.55
185019	JONES, BRIAN D	06/30/2017	229.12
185020	KARTHAUSER-BLAIR, KASEY L	06/30/2017	110.14
185021	KD'S COUNTRY FLORAL	06/30/2017	344.35
185022	MEADOWBROOK FAMILY FUN CENTER	06/30/2017	1,630.00
185023	ORIENTAL TRADING CO	06/30/2017	1,082.00
185024	PACIFIC SCIENCE CENTER	06/30/2017	777.00
185025	PALOUSE RIDGE GOLF CLUB	06/30/2017	165.00
185026	PEPSI COLA YAKIMA	06/30/2017	2,026.84
185027	PHE IMPREST FUND	06/30/2017	2,971.70
185028	PRINCESS THEATRE	06/30/2017	178.75
185029	PROSSER HIGH SCHOOL IMPREST	06/30/2017	2,856.51
185030	PROSSER FAMILY FUN CENTER	06/30/2017	1,062.00
185031	QUINN, ANITA LAFFEY	06/30/2017	73.21
185032	RAMIREZ, ARNOLDO	06/30/2017	255.00
185033	SALYERS-SMITH, KILA M.	06/30/2017	2,324.52
185034	SKEEN, ANGELA P	06/30/2017	265.69

Check Nbr	Vendor Name	Check Date	Check Amount
185035	THE PRINT GUYS	06/30/2017	282.33
185036	TRT PRINTED	06/30/2017	390.96
185037	VALLEY SEPTIC SERVICE LLC	06/30/2017	195.00
185038	VALLEY THEATER COMPANY	06/30/2017	191.50
185039	VARSITY SPIRIT FASHIONS	06/30/2017	2,000.00
185040	WALKER, RANDALL A	06/30/2017	123.80
185041	WALSWORTH PUBLISHING COMPANY	06/30/2017	16,531.77
185042	WHITSTRAN ELEM IMPREST FUND	06/30/2017	564.00
185043	WOODLAND PARK ZOOLOGICAL SOCIE	06/30/2017	989.75
185044	ZAG VOLLEYBALL CAMPS	06/30/2017	6,200.00
43	Computer	Check(s) For a Total of	73,892.34

Check Nbr	Vendor Name	Check Date	Invoice Number	Invoice Desc	PO Number	Invoice Amount	Check Amount
185002	A & A MOTORCOACH	06/30/2017	70156	transportation to Mariner's game	4521600249	1,618.48	11,854.83
40 E 530 4665 05 0000 000 0000 0000			Associated Student Body Fund/Expenditures/CHAMPS			1,618.48	
			71004		1190	1,421.35	
40 E 530 4030 03 0000 000 0000 0000			Associated Student Body Fund/Expenditures/SEATTLE			1,421.35	
			71549		1199	1,763.60	
40 E 530 4030 03 0000 000 0000 0000			Associated Student Body Fund/Expenditures/SEATTLE			1,763.60	
			72116		1234	1,763.60	
40 E 530 4030 03 0000 000 0000 0000			Associated Student Body Fund/Expenditures/SEATTLE			1,763.60	
			72117		1242	1,763.60	
40 E 530 4030 03 0000 000 0000 0000			Associated Student Body Fund/Expenditures/SEATTLE			1,763.60	
			72376		1230	1,763.60	
40 E 530 4030 03 0000 000 0000 0000			Associated Student Body Fund/Expenditures/SEATTLE			1,763.60	
			72386		1198	1,760.60	
40 E 530 4030 03 0000 000 0000 0000			Associated Student Body Fund/Expenditures/SEATTLE			1,760.60	
185003	BANK, U S	06/30/2017	JUNE 2017 2ND RUN		0	3,846.88	3,846.88
40 E 530 4030 03 0000 000 0000 0000			Associated Student Body Fund/Expenditures/SEATTLE			3,135.18	
40 E 530 4180 05 0000 000 0000 0000			Associated Student Body Fund/Expenditures/FBLA			711.70	
185004	BILL SPEIDEL'S UNDERGROUND TOU	06/30/2017	006947		1195	366.00	366.00
40 E 530 4030 03 0000 000 0000 0000			Associated Student Body Fund/Expenditures/SEATTLE			366.00	
185005	BSN SPORTS	06/30/2017	900082200	Baseball Hats	4521600264	2,358.81	2,358.81
40 E 530 2100 05 0000 000 0000 0000			Associated Student Body Fund/Expenditures/BASEBALL			2,358.81	
185006	CHANNEL, LYNN	06/30/2017	SUMMER PROG. REFUND		0	200.00	200.00
40 E 530 2110 05 0000 000 0000 0000			Associated Student Body Fund/Expenditures/BASKETBALL BO			200.00	
185007	CITY OF PROSSER	06/30/2017	#2053 6/14/2017	Pool rental for cheer banquet	4521600327	500.00	500.00
40 E 530 4470 05 0000 000 0000 0000			Associated Student Body Fund/Expenditures/CHEERLEADING			500.00	
185008	COLGREN, SUZANNE I	06/30/2017	NHS BBQ 2017		0	61.25	61.25
40 E 530 4610 05 0000 000 0000 0000			Associated Student Body Fund/Expenditures/HONOR SOCIETY			61.25	
185009	COSTCO	06/30/2017	6/11/2017	Breakfast supplies and drinks for luncheon	4521600304	582.91	582.91
40 E 530 3017 05 0000 000 0000 0000			Associated Student Body Fund/Expenditures/CLASS OF 2017			582.91	
185010	COX, TOBY W	06/30/2017	SEASIDE ROOMS		0	4,627.66	4,627.66
40 E 530 2110 05 0000 000 0000 0000			Associated Student Body Fund/Expenditures/BASKETBALL BO			4,627.66	

Check Nbr	Vendor Name	Check Date	Invoice Number	Invoice Desc	PO Number	Invoice Amount	Check Amount
185011	DOMINO'S PIZZA PROSSER	06/30/2017	30688		706	32.58	32.58
40 E 530 2240 05 0000 000 0000 0000				Associated Student Body Fund/Expenditures/VOLLEYBALL		32.58	
185012	DOUBLE D TROPHIES	06/30/2017	2595	Trophy Engraving	4521600330	25.99	25.99
40 E 530 4360 05 0000 000 0000 0000				Associated Student Body Fund/Expenditures/BAND		25.99	
185013	EPCO INC / IN STITCHES	06/30/2017	17431		0	162.90	162.90
40 E 530 2110 05 0000 000 0000 0000				Associated Student Body Fund/Expenditures/BASKETBALL BO		162.90	
185014	FOOD DEPOT	06/30/2017	170715		1243	61.42	180.52
40 E 530 4030 03 0000 000 0000 0000				Associated Student Body Fund/Expenditures/SEATTLE		61.42	
			170866		1238	99.63	
40 E 530 3470 03 0000 000 0000 0000				Associated Student Body Fund/Expenditures/ROOM 7		99.63	
			170915		1236	19.47	
40 E 530 3470 03 0000 000 0000 0000				Associated Student Body Fund/Expenditures/ROOM 7		19.47	
185015	GAMEWORKS SEATTLE	06/30/2017	201-6330		1196	705.62	1,779.45
40 E 530 4030 03 0000 000 0000 0000				Associated Student Body Fund/Expenditures/SEATTLE		705.62	
			201-6335		1233	544.08	
40 E 530 4030 03 0000 000 0000 0000				Associated Student Body Fund/Expenditures/SEATTLE		544.08	
			201-6336		1197	529.75	
40 E 530 4030 03 0000 000 0000 0000				Associated Student Body Fund/Expenditures/SEATTLE		529.75	
185016	HUMBERSTAD, ROBIN ELISE	06/30/2017	LUNCH LAST DAY		0	114.07	114.07
40 E 530 3150 01 0000 000 0000 0000				Associated Student Body Fund/Expenditures/FIFTH-BELL		114.07	
185017	HURT, TRACY L	06/30/2017	FOOTBALL REFUND		0	255.00	255.00
40 E 530 2140 05 0000 000 0000 0000				Associated Student Body Fund/Expenditures/FOOTBALL		255.00	
185018	IMAGE MARKET	06/30/2017	3362914	Mustang Way	4521600317	3,122.55	3,122.55
				Shirts for 17/18			
40 E 530 1040 05 0000 000 0000 0000				Associated Student Body Fund/Expenditures/GENERAL		3,391.09	
40 L 601 0000 00 0000 000 0000 0000				Associated Student Body Fund/Accounts Payable		-268.54	
185019	JONES, BRIAN D	06/30/2017	AWARDS		0	229.12	229.12
40 E 530 1040 01 0000 000 0000 0000				Associated Student Body Fund/Expenditures/GENERAL		229.12	
185020	KARTHAUSER-BLAIR, KASEY L	06/30/2017	BREAKFAST		0	110.14	110.14
40 E 530 3017 05 0000 000 0000 0000				Associated Student Body Fund/Expenditures/CLASS OF 2017		110.14	
185021	KD'S COUNTRY FLORAL	06/30/2017	6/14/2017	Bouquet for	4521600318	100.00	344.35
				Church			
40 E 530 3017 05 0000 000 0000 0000				Associated Student Body Fund/Expenditures/CLASS OF 2017		100.00	
			6/17/2017	Flowers for	4521600331	244.35	
				Graduation			

Check Nbr	Vendor Name	Check Date	Invoice Number	Invoice Desc	PO Number	Invoice Amount	Check Amount
40 E 530 3017 05 0000 000 0000 0000				Associated Student Body Fund/Expenditures/CLASS OF 2017		244.35	
185022	MEADOWBROOK FAMILY FUN CENTER	06/30/2017	6/13/2017	8th Grade End of Year Party	2421600012	1,630.00	1,630.00
40 R 960 1040 04 0000 000 0000 0000				Associated Student Body Fund/Revenues/GENERAL		1,630.00	
185023	ORIENTAL TRADING CO	06/30/2017	683518844-01		2626	66.94	1,082.00
40 E 530 1040 02 0000 000 0000 0000				Associated Student Body Fund/Expenditures/GENERAL		72.70	
40 L 601 0000 00 0000 000 0000 0000				Associated Student Body Fund/Accounts Payable		-5.76	
			683608677		2627	281.79	
40 E 530 1040 02 0000 000 0000 0000				Associated Student Body Fund/Expenditures/GENERAL		306.02	
40 L 601 0000 00 0000 000 0000 0000				Associated Student Body Fund/Accounts Payable		-24.23	
			683830702		2628	97.93	
40 E 530 1040 02 0000 000 0000 0000				Associated Student Body Fund/Expenditures/GENERAL		106.35	
40 L 601 0000 00 0000 000 0000 0000				Associated Student Body Fund/Accounts Payable		-8.42	
			684088542-01		2634	20.97	
40 E 530 1040 02 0000 000 0000 0000				Associated Student Body Fund/Expenditures/GENERAL		22.77	
40 L 601 0000 00 0000 000 0000 0000				Associated Student Body Fund/Accounts Payable		-1.80	
			684125111-01		2635	100.26	
40 E 530 1040 02 0000 000 0000 0000				Associated Student Body Fund/Expenditures/GENERAL		108.88	
40 L 601 0000 00 0000 000 0000 0000				Associated Student Body Fund/Accounts Payable		-8.62	
			684205998-01		2638	108.37	
40 E 530 1040 02 0000 000 0000 0000				Associated Student Body Fund/Expenditures/GENERAL		117.69	
40 L 601 0000 00 0000 000 0000 0000				Associated Student Body Fund/Accounts Payable		-9.32	
			684206047-01		2637	30.97	
40 E 530 1040 02 0000 000 0000 0000				Associated Student Body Fund/Expenditures/GENERAL		33.63	
40 L 601 0000 00 0000 000 0000 0000				Associated Student Body Fund/Accounts Payable		-2.66	
			684218650-01		1237	221.84	
40 E 530 3470 03 0000 000 0000 0000				Associated Student Body Fund/Expenditures/ROOM 7		221.84	
			684225361-01		2639	47.98	
40 E 530 1040 02 0000 000 0000 0000				Associated Student Body Fund/Expenditures/GENERAL		52.11	
40 L 601 0000 00 0000 000 0000 0000				Associated Student Body Fund/Accounts Payable		-4.13	
			684225389-01		2636	104.95	
40 E 530 1040 02 0000 000 0000 0000				Associated Student Body Fund/Expenditures/GENERAL		113.98	
40 L 601 0000 00 0000 000 0000 0000				Associated Student Body Fund/Accounts Payable		-9.03	
185024	PACIFIC SCIENCE CENTER	06/30/2017	123705004000		1241	160.00	777.00
40 E 530 4030 03 0000 000 0000 0000				Associated Student Body Fund/Expenditures/SEATTLE		160.00	
			inv00042193		1194	351.00	
40 E 530 4030 03 0000 000 0000 0000				Associated Student Body Fund/Expenditures/SEATTLE		351.00	

Check Nbr	Vendor Name	Check Date	Invoice Number	Invoice Desc	PO Number	Invoice Amount	Check Amount
			INV0042253		1200	266.00	
40 E 530 4030 03 0000 000 0000 0000			Associated Student Body Fund/Expenditures/SEATTLE			266.00	
185025	PALOUSE RIDGE GOLF CLUB	06/30/2017	041217	Girls Golf	4521600322	165.00	165.00
				Invitational entree fee			
40 E 530 2185 05 0000 000 0000 0000			Associated Student Body Fund/Expenditures/GOLF-GIRLS			165.00	
185026	PEPSI COLA YAKIMA	06/30/2017	0072776	Baseball - drinks	4521600238	352.84	2,026.84
				for concessions			
40 E 530 2100 05 0000 000 0000 0000			Associated Student Body Fund/Expenditures/BASEBALL			352.84	
			010073017	Soda	4521600296	52.13	
40 E 530 4150 05 0000 000 0000 0000			Associated Student Body Fund/Expenditures/FFA			52.13	
			010073089	Baseball - drinks	4521600238	1,621.87	
				for concessions			
40 E 530 2100 05 0000 000 0000 0000			Associated Student Body Fund/Expenditures/BASEBALL			1,621.87	
185027	PHE IMPREST FUND	06/30/2017	1131 ZENGER		0	540.00	2,971.70
40 E 530 4030 03 0000 000 0000 0000			Associated Student Body Fund/Expenditures/SEATTLE			540.00	
			1132		0	520.00	
40 E 530 4030 03 0000 000 0000 0000			Associated Student Body Fund/Expenditures/SEATTLE			520.00	
			1133		0	750.00	
40 E 530 4030 03 0000 000 0000 0000			Associated Student Body Fund/Expenditures/SEATTLE			750.00	
			1135		0	550.00	
40 E 530 4030 03 0000 000 0000 0000			Associated Student Body Fund/Expenditures/SEATTLE			550.00	
			1136		0	345.00	
40 E 530 4030 03 0000 000 0000 0000			Associated Student Body Fund/Expenditures/SEATTLE			345.00	
			1137		0	99.67	
40 E 530 4030 03 0000 000 0000 0000			Associated Student Body Fund/Expenditures/SEATTLE			99.67	
			1138		0	40.92	
40 E 530 4030 03 0000 000 0000 0000			Associated Student Body Fund/Expenditures/SEATTLE			40.92	
			1139		0	103.82	
40 E 530 4030 03 0000 000 0000 0000			Associated Student Body Fund/Expenditures/SEATTLE			103.82	
			1140		0	22.29	
40 E 530 4030 03 0000 000 0000 0000			Associated Student Body Fund/Expenditures/SEATTLE			22.29	
185028	PRINCESS THEATRE	06/30/2017	VT 16/17-91	Rental of tables	4521600325	178.75	178.75
				and chair. 100 tables			
40 E 530 3017 05 0000 000 0000 0000			Associated Student Body Fund/Expenditures/CLASS OF 2017			178.75	

Check Nbr	Vendor Name	Check Date	Invoice Number	Invoice Desc	PO Number	Invoice Amount	Check Amount
185029	PROSSER HIGH SCHOOL IMPREST	06/30/2017	2862		0	20.00	2,856.51
40 E 530 6100 05 0000 000 0000 0000				Associated Student Body Fund/Expenditures/SAUL HAAS		20.00	
			2863		0	50.00	
40 E 530 2240 05 0000 000 0000 0000				Associated Student Body Fund/Expenditures/VOLLEYBALL		50.00	
			2864		0	150.48	
40 E 530 4150 05 0000 000 0000 0000				Associated Student Body Fund/Expenditures/FFA		150.48	
			2865		0	301.00	
40 E 530 2040 05 0000 000 0000 0000				Associated Student Body Fund/Expenditures/ATHLETIC TRAV		301.00	
			2866		0	301.00	
40 E 530 2040 05 0000 000 0000 0000				Associated Student Body Fund/Expenditures/ATHLETIC TRAV		301.00	
			2867		0	30.00	
40 E 530 2004 05 0000 000 0000 0000				Associated Student Body Fund/Expenditures/ATHLETIC GENE		30.00	
			2868		0	30.00	
40 E 530 6100 05 0000 000 0000 0000				Associated Student Body Fund/Expenditures/SAUL HAAS		30.00	
			2869		0	25.00	
40 E 530 4360 05 0000 000 0000 0000				Associated Student Body Fund/Expenditures/BAND		25.00	
			2870		0	142.00	
40 E 530 2150 05 0000 000 0000 0000				Associated Student Body Fund/Expenditures/TRACK		142.00	
			2871		0	215.03	
40 E 530 4470 05 0000 000 0000 0000				Associated Student Body Fund/Expenditures/CHEERLEADING		215.03	
			2872		0	250.00	
40 E 530 6001 05 0000 000 0000 0000				Associated Student Body Fund/Expenditures/ASB CHARITABL		250.00	
			2873		0	95.00	
40 E 530 1040 05 0000 000 0000 0000				Associated Student Body Fund/Expenditures/GENERAL		95.00	
			2874		0	21.00	
40 E 530 6100 05 0000 000 0000 0000				Associated Student Body Fund/Expenditures/SAUL HAAS		21.00	
			2877		0	200.00	
40 E 530 4360 05 0000 000 0000 0000				Associated Student Body Fund/Expenditures/BAND		200.00	
			2878		0	132.00	
40 E 530 2040 05 0000 000 0000 0000				Associated Student Body Fund/Expenditures/ATHLETIC TRAV		132.00	
			2879		0	828.00	
40 E 530 2040 05 0000 000 0000 0000				Associated Student Body Fund/Expenditures/ATHLETIC TRAV		828.00	
			2880		0	46.00	
40 E 530 2040 05 0000 000 0000 0000				Associated Student Body Fund/Expenditures/ATHLETIC TRAV		46.00	

Check Nbr	Vendor Name	Check Date	Invoice Number	Invoice Desc	PO Number	Invoice Amount	Check Amount
			2881		0	20.00	
40 E 530 6100 05 0000 000 0000 0000			Associated Student Body Fund/Expenditures/SAUL HAAS			20.00	
185030	PROSSER FAMILY FUN CENTER	06/30/2017	0456	6th Grade End of Year Party	2421600013	1,062.00	1,062.00
40 R 960 1040 04 0000 000 0000 0000			Associated Student Body Fund/Revenues/GENERAL			1,062.00	
185031	QUINN, ANITA LAFFEY	06/30/2017	BACC. SUPPLIES		0	73.21	73.21
40 E 530 3017 05 0000 000 0000 0000			Associated Student Body Fund/Expenditures/CLASS OF 2017			73.21	
185032	RAMIREZ, ARNOLDO	06/30/2017	football refund		0	255.00	255.00
40 E 530 2140 05 0000 000 0000 0000			Associated Student Body Fund/Expenditures/FOOTBALL			255.00	
185033	SALYERS-SMITH, KILA M.	06/30/2017	NATIONALS TRAVEL		0	212.76	2,324.52
40 E 530 4645 05 0000 000 0000 0000			Associated Student Body Fund/Expenditures/HISTORY CLUB			212.76	
			NHD NATIONALS 2017		0	2,035.50	
40 E 530 4645 05 0000 000 0000 0000			Associated Student Body Fund/Expenditures/HISTORY CLUB			2,035.50	
			PARKING AT NATIONALS		0	76.26	
40 E 530 4645 05 0000 000 0000 0000			Associated Student Body Fund/Expenditures/HISTORY CLUB			76.26	
185034	SKEEN, ANGELA P	06/30/2017	BANQUET SUPPLIES 17'		0	265.69	265.69
40 E 530 1040 05 0000 000 0000 0000			Associated Student Body Fund/Expenditures/GENERAL			95.91	
40 E 530 4350 05 0000 000 0000 0000			Associated Student Body Fund/Expenditures/LEADERSHIP			169.78	
185035	THE PRINT GUYS	06/30/2017	111452 program		4521600319	282.33	282.33
40 E 530 3017 05 0000 000 0000 0000			Associated Student Body Fund/Expenditures/CLASS OF 2017			282.33	
185036	TRT PRINTED	06/30/2017	1155 volleyball mini camp tshirts		4521600324	390.96	390.96
40 E 530 2240 05 0000 000 0000 0000			Associated Student Body Fund/Expenditures/VOLLEYBALL			390.96	
185037	VALLEY SEPTIC SERVICE LLC	06/30/2017	143179 Porta Potties for softball/soccer fields		4521600234	195.00	195.00
40 E 530 2004 05 0000 000 0000 0000			Associated Student Body Fund/Expenditures/ATHLETIC GENE			195.00	
185038	VALLEY THEATER COMPANY	06/30/2017	VT 16-17-90		1201	191.50	191.50
40 E 530 3470 03 0000 000 0000 0000			Associated Student Body Fund/Expenditures/ROOM 7			191.50	
185039	VARSITY SPIRIT FASHIONS	06/30/2017	27603446- Cheer shoes 2017/2018		4521600302	2,000.00	2,000.00
40 E 530 4470 05 0000 000 0000 0000			Associated Student Body Fund/Expenditures/CHEERLEADING			2,000.00	
185040	WALKER, RANDALL A	06/30/2017	STAFF MEETING		0	123.80	123.80
40 E 530 4665 05 0000 000 0000 0000			Associated Student Body Fund/Expenditures/CHAMPS			123.80	
185041	WALSWORTH PUBLISHING COMPANY	06/30/2017	1060706		0	16,531.77	16,531.77
40 E 530 4010 05 0000 000 0000 0000			Associated Student Body Fund/Expenditures/YEARBOOK			16,531.77	

Check Nbr	Vendor Name	Check Date	Invoice Number	Invoice Desc	PO Number	Invoice Amount	Check Amount
185042	WHITSTRAN ELEM IMPREST FUND	06/30/2017	1162		0	470.00	564.00
40 E 530 3150 01 0000 000 0000 0000				Associated Student Body Fund/Expenditures/FIFTH-BELL		470.00	
			1163		0	94.00	
40 E 530 3150 01 0000 000 0000 0000				Associated Student Body Fund/Expenditures/FIFTH-BELL		94.00	
185043	WOODLAND PARK ZOOLOGICAL SOCIE	06/30/2017	1705035		1240	342.25	989.75
40 E 530 4030 03 0000 000 0000 0000				Associated Student Body Fund/Expenditures/SEATTLE		342.25	
			570131		1228	351.50	
40 E 530 4030 03 0000 000 0000 0000				Associated Student Body Fund/Expenditures/SEATTLE		351.50	
			570166		1240	296.00	
40 E 530 4030 03 0000 000 0000 0000				Associated Student Body Fund/Expenditures/SEATTLE		296.00	
185044	ZAG VOLLEYBALL CAMPS	06/30/2017	2240VBC		0	6,200.00	6,200.00
40 E 530 2240 05 0000 000 0000 0000				Associated Student Body Fund/Expenditures/VOLLEYBALL		6,200.00	
			43	Computer	Check(s) For a Total of		73,892.34

To: Board of Directors
Subject: Donation from Prosser Booster Club
Agenda: Action
Date: June 27, 2017
Prepared by: Kevin Lusk, *PHS Principal*

Background:

The Prosser Student Body has received a donation of \$989.16 from Prosser Booster Club! The donation will be deposited into the ASB cheerleading account. We greatly appreciate the help and support from Prosser Booster Club.

Recommendation:

It is recommended the Board of Directors accept the \$989.16 and it be deposited into the ASB cheerleading account.

BOARD PACKET

TO: Board of Directors
SUBJECT: Certificated Personnel
AGENDA: Consent
DATE: June 27, 2017
PREPARED BY: Dr. Ray Tolcacher, Superintendent

Certificated Employees

Jodi Sabin has been recommended as an Extended School Year summer school teacher.

Lisa Castillo has been recommended as an Extended School Year summer school teacher.

Joann Schnellbach has been recommended as a summer school intensive reading teacher.

Crystal Thomas has been recommended as a Pk-5 migrant summer school teacher.

Ann Sipe has been recommended as the summer school intensive reading program supervisor.

Lisa Ancock has been recommended as a school psychologist for the 2017/18 school year.

Camille Klingele has been recommended as an art teacher at Prosser Heights Elementary for the 2017/18 school year.

Lacey Steffey has been recommended as a second grade teacher at Keene-Riverview Elementary for the 2017/18 school year.

James Hatch has submitted a letter of resignation from his position as a math teacher at Housel Middle School.

Bethany Riddle has submitted a letter of resignation from her position as an assistant volleyball coach at Housel Middle School.

Wendy Rodriguez has submitted a letter of resignation from her position as a volleyball coach at Housel Middle School.

Leonor de Maldonado has been recommended as the Migrant/Bilingual Coordinator. She will begin her employment on July 1, 2017.