



## Principal's Report to the BUSD School Board June 2018

**Summer KBS Enrollment:** 4 students (1 middle school, 3 high school)

**PGHS / BIS 2018 Graduates:** PGHS: 19, BIS: 10 (20% of the 2018 BUSD Senior Graduating Class)

*Please note the associated LCAP goals under each of the headings in this report.\**

**Goal 1:** Prepare students with the skills to excel in college and career.

**Goal 2:** Increase the quality of instruction for all students by deepening implementation of the Common Core State Standards, and by implementing Explicit Direct Instruction district-wide.

**Goal 3:** Ensure all student populations achieve annual measurable academic growth.

**Goal 4:** Implement a plan to increase students' sense of feeling safe and connected at school.

### PGHS / BIS Graduation

*Associated LCAP Goals: 1) College and Career 3) Academic Growth*

Our 2018 graduation ceremony was a huge success. Thank you to Trina, Josh, and Steve for attending! I am including the [link to graduation photos](#) here for you to see some captured moments. 19 students graduated from Palisade Glacier High School this year and 10 from Bishop Independent Study, making up about 20%



of the BUSD Class of 2018. As I mentioned in my speech at the ceremony, this group of graduates has a wide range of skills and passions. Graduating from our alt ed schools this year are future nurses, marines, entrepreneurs, cosmetologists and barbers. We have a future welder, a firefighter, author, computer programmer, army soldier, teacher, musician, and both physical and equine therapists. This year, we send off future tradesmen, in the fields of electrician and construction, as well as

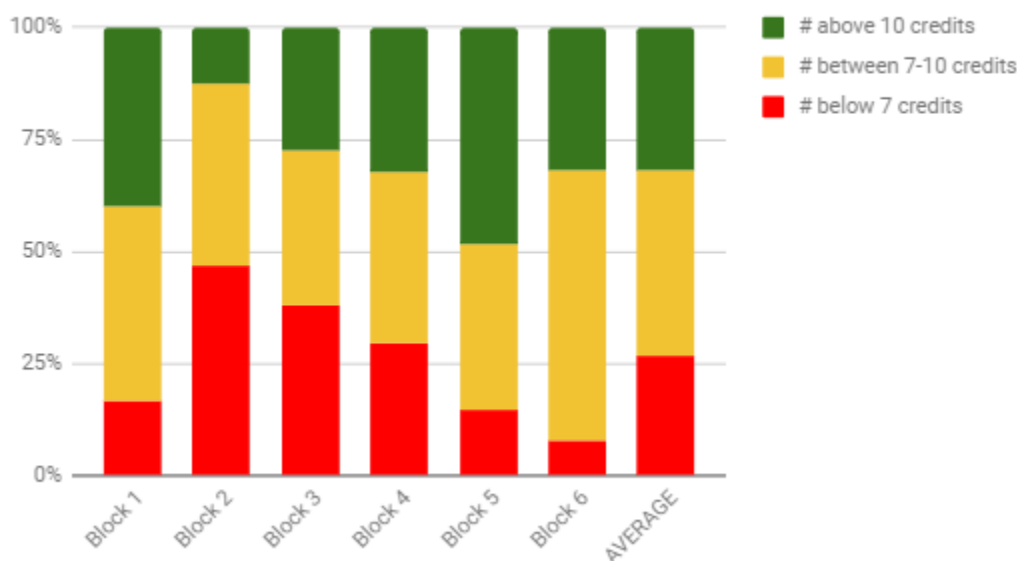
animal trainers and advocates. Clearly, this group of unique and tenacious individuals is bound to make a difference in our community and our world!

## 2017 - 2018 Credit Earnings (PGHS and BIS)

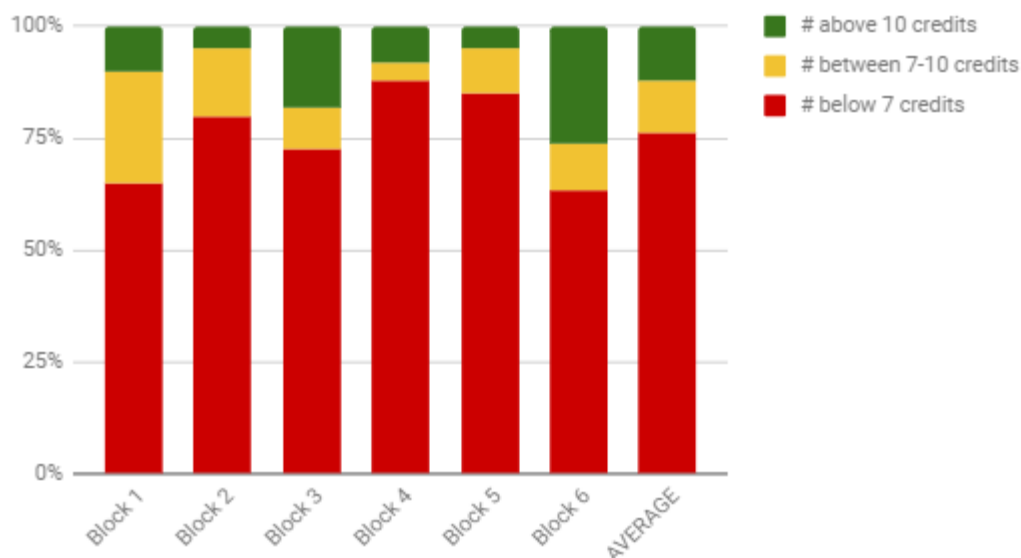
### *Associated LCAP Goals: 3) Academic Growth*

The graphs below illustrate our student body's credit earning rates for each block this year at PGHS and BIS. On average, PGHS students earned about 75% of the "available" credit throughout the year, while BIS students earned an average of 42%. This seems to be closely correlated to average attendance, as our attendance rate for PGHS at the end of the year was 87%, while BIS attendance hovered around 65%. As usual, while BIS students as a whole earn less credits than their Pali counterparts, BIS continues to serve students that wouldn't otherwise have a place in our school system - "super seniors", parenting students, students with health issues, etc. Graduating 10 BIS students this year has been rewarding!

'17-'18 PGHS Credit Earnings by Block



'17-'18 BIS Credit Earnings by Block

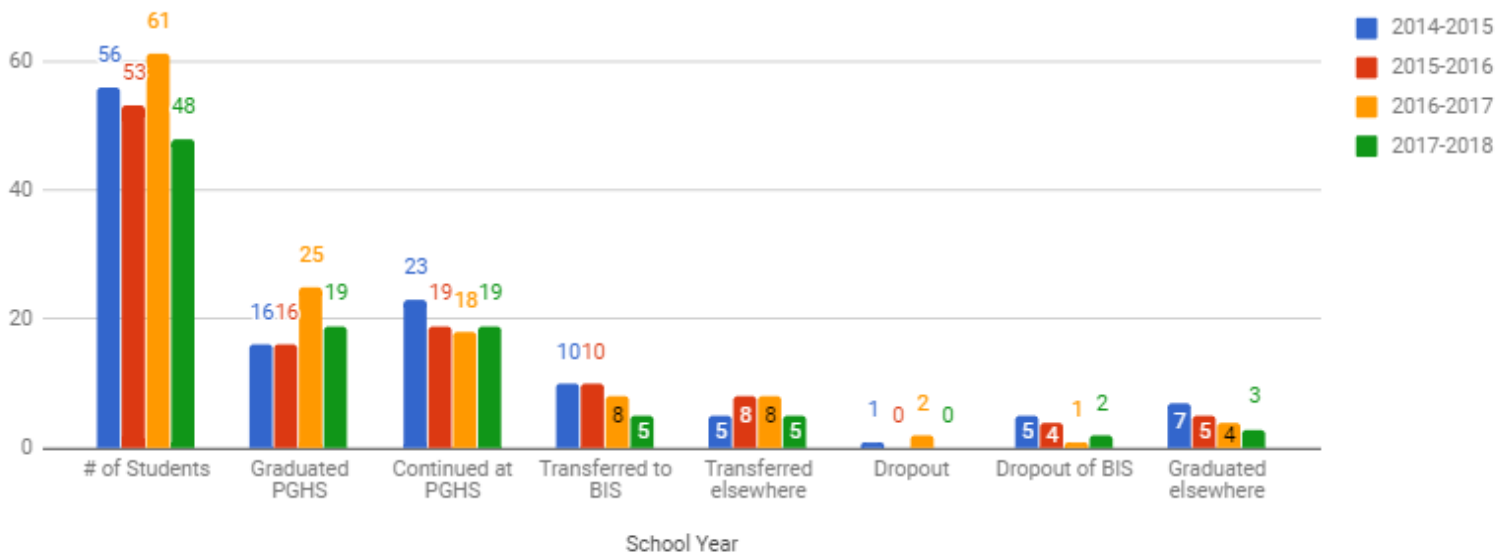


## Graduation / Drop Out Data (PGHS and BIS)

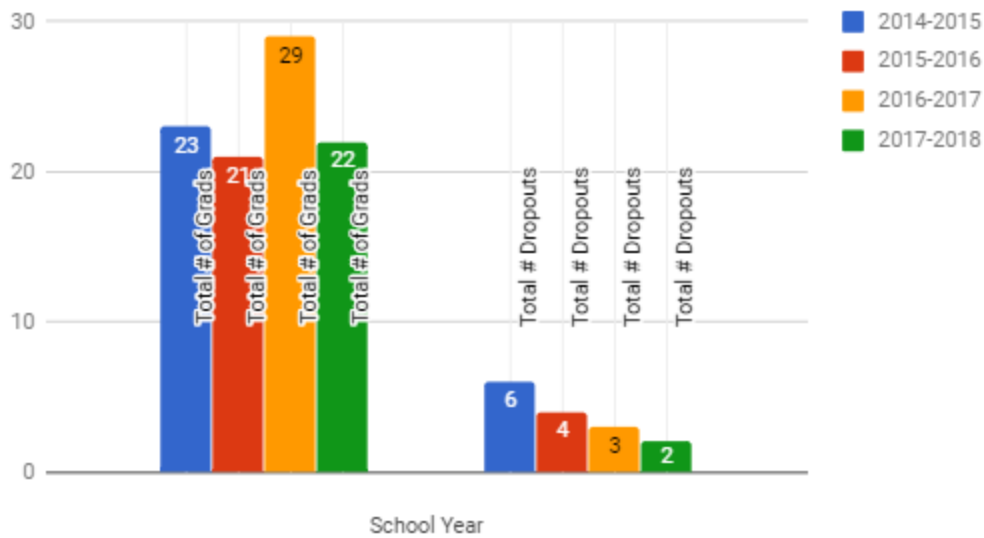
*Associated LCAP Goals: 3) Academic Growth 4) School Connectedness*

The graphs below illustrate our student body's graduation and dropout status over the course of the last 4 years at both PGHS and BIS. Our graduation rate at PGHS has been rising slightly, while the dropout rate has lowered each year for the last 4 years. At BIS, the graduation rate has overall increased while the dropout rate has stayed pretty fixed.

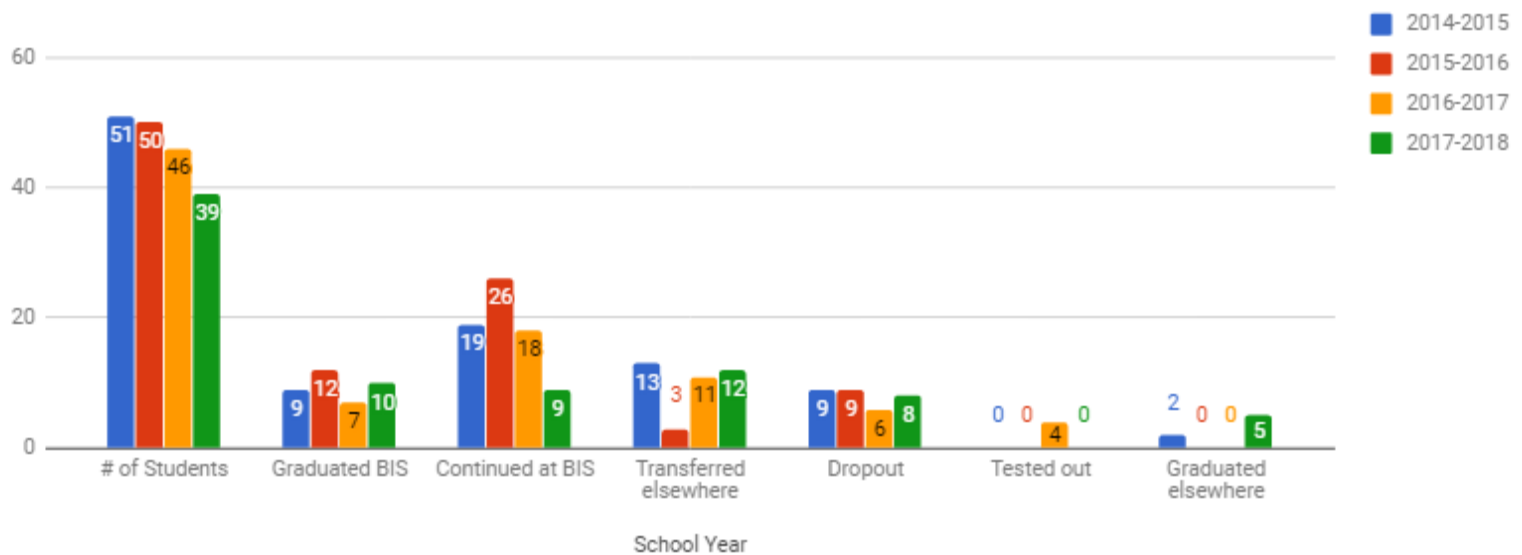
PGHS Graduate/Dropout Data



## Total # of Grads and Total # Dropouts - PGHS



## BIS Graduate/Dropout Data



Total # of Grads and Total # Dropouts - BIS

