



## **SCHEDULE**

The project is roughly 40% complete and projected to complete on time. The site concrete and underground utilities in the parking lot are 1-2 weeks behind schedule per the baseline created in May. However, there are several weeks of cushion before they impact the final completion date.

## **BUDGET**

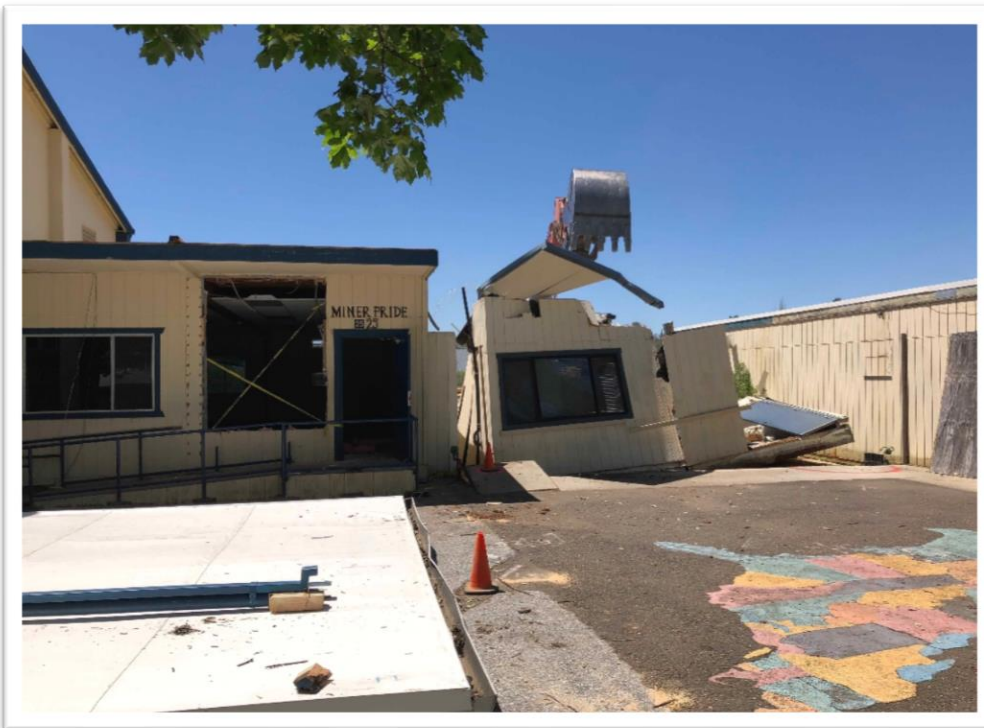
The project team has assessed rough order magnitude (ROM) costs of issues. A majority of the of project's scope which would lend itself to usage of contingency such as items hidden behind the walls or underneath the slab of the restroom, or in the earth being excavated is near completion so the team is feeling comfortable that there should not be any new large surprises. As many of the issues that have risen have not been resolve/ built we use ROMs as place holders and are projecting 5% of the project value in for unforeseen issues and another 2% of the project value is going towards scope requested by the district such as replacing dry rotted siding on portables, delaminated & dry rotted doors, & stucco repairs. All of these costs are within the project's Guaranteed Maximum Price (GMP) as contingency and allowances.

---

---

---

## **PROGRESS PHOTOS**



### **HARD DEMO**

By the end of week one, crews were demolishing portable classrooms 21-25. The gymnasium canopy has been removed in preparation of a new canopy.

## Improvements to Herbert Green Middle School June 2018 Update

---

### GUT WING D RESTROOM

Wing D Restroom has been gutted to the studs awaiting slab removal for new underground plumbing. As of June 26 the underground plumbing has been completed and the slab has been replaced.



### NEW PAINT SCHEME

A fresh coat of paint gives the entire campus a new feel. The district elected to give the campus a face lift with a new color scheme.



Improvements to Herbert Green Middle School  
June 2018 Update

---

SITE ROUGH  
GRADE

An aerial photo reflects the circulation of the new parking lot as site rough grading proceeds.



BUILDING  
FOUNDATIONS

Forms for Classrooms 24-25 concrete foundations in progress. Rebar and concrete for all foundations have been placed as of June 29<sup>th</sup>.



Improvement to Herbert Green MLUSD  
August 2018 Update

**SCHEDULE**

The project is substantially complete. The architect will review the new buildings Friday August 24, 2018 to create a punch list for the modular manufacture and Wednesday to walk to site for the contractors. Striping the pavement will take place August 30<sup>th</sup> and Landscape will carry on through the month. The electricians will be trouble shooting the Public Address speaker system through the end of the month to ensure school will be back online in time.

**BUDGET**

As we reach completion we are projecting 6% of the Guaranteed Maximum Price (GMP) being expensed in contingency usage leaving roughly 50% of the allotted contingency in the district's pocket.

**PROGRESS PHOTOS**



**CONCRETE PLAZA**

Concrete workers lay the new concrete at the entrance of the campus.

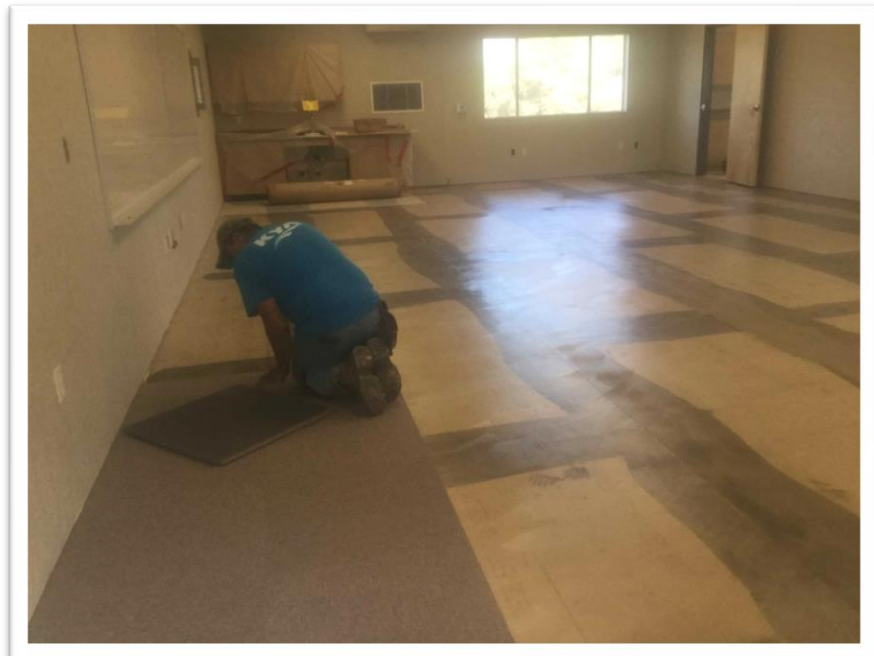


PARKING LOT  
CENTER PEICE

The elevations of the campus made for a challenging design but the end result will include a landscaped island with fence and stairs to access the student drop off area.

INTERIOR  
FINISHES

The modular manufacturer made a mad dash to complete the interior finishes. AMS installing carpet tiles in a new classroom.



Improvement to Herbert Green MLUSD  
August 2018 Update

Couple More Pictures





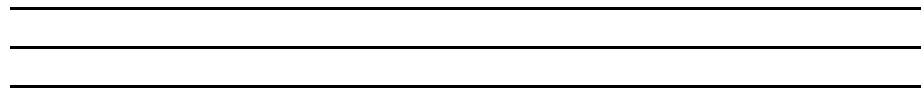
## **SCHEDULE**

The project is roughly 50% complete. The roof install is 5-6 days behind schedule per the baseline created in May. However, it has 1-2 weeks of cushion before effecting tasks that impact the critical startup and testing of the new HVAC units.

## **BUDGET**

All of the roofing and roof mounted utilities have been removed, the dry rot has been exposed and replaced. These items lend themselves to exposing to unforeseen conditions / contingency usage so the team is feeling comfortable that there should not be much additional usage of contingency needed.

As many of the issues have not been completed and exact costs are unknown the project team has assessed rough order magnitude (ROM) costs of issues with fiscal impacts. Currently these ROMs are projected to be 6% of the Guaranteed Maximum Price (GMP) presented to the Board of Trustees in February.



## **PROGRESS PHOTOS**



### **AERIAL VIEW OF ROOFING PROGRESS**

The Cafeteria and Classroom wing-A have new white roofing installed. Classroom wings B, C, & D can be observed with exposed wood roof structure.

# HVAC and Roof Replacement at Herbert Green MS

## June 2018 Update

---

### ROOF WORK IN PROGRESS

New high quality single ply Tremco roofing system being installed over new insulation. New fascia and gutters will be installed typical all classroom wings.



### REMOVAL OF EXISTING HVAC UNITS

Heavy duty crane on site to remove all existing roof top HVAC units on June 8<sup>th</sup>. HVAC units were manufactured in the 1970's and are being replaced with new high efficiency models.





## Herbert Green HVAC and Roof Replacement MLUSD August 2018 Update

---

### **SCHEDULE**

On August 17, 2018 the architect and engineers walked the roof to create a punch list. There are a few miscellaneous items that need to be completed such as tightening pipe straps, painting coper pipe and final cleaning. Aside from those items, receiving system training and close out documents, the project is complete.

### **BUDGET**

As we reach completion 5.5% of the Guaranteed Maximum Price (GMP) has been expensed in contingency usage leaving nearly 70% of the contingency in the district's pocket. Twenty five percent of the contingency usage was utilized for dry rot repair.

### **PROGRESS PHOTOS**



#### **AERIAL VIEW**

New single ply roofing and HVAC units installed.



NEW GAS PIPE  
AND SUPPORTS

All new liquid propane gas pipe installed back to the tank.

RESTROOM  
EXHAUST

New exhaust fans replaced exhaust fans that were no longer functional.





**SCHEDULE**

The project is roughly 50% complete with some tasks ahead of schedule. There are no indicators that this project will not be completed on time.

**BUDGET**

The project team has assessed rough order magnitude (ROM) costs of issues. A majority of the of project's scope which would lend itself to usage of contingency such as items hidden behind the walls or underneath the slab of the restroom, or in the earth being excavated is near completion so the team is feeling comfortable that there should not be any new large issues for contingency usage. As many of the issues that have risen and have not yet been built we use ROMs as place holders and are projecting 2.5% of the project value for unforeseen issues and another 1% of the project value to bring a pathway for future fiber optic cable / Telecommunications from the County Office of Education to the Elementary School as requested by the district. All of these costs are within the project's Guaranteed Maximum Price (GMP) as presented to the Board of Trustees in January.

---

---

---

**PROGRESS PHOTOS**



**MODULAR BLDG  
CONSTRUCTION**

Modular classroom buildings section being fabricated at American Modular Systems production facility Early June.

**BUILDING  
FOUNDATIONS**

Kindergarten classroom foundations being formed in preparation of new modular building.



**MODULAR CLASSROOM  
BUILDING INSTALLATION**

New Kindergarten classroom being lifted and set onto foundations in sections June 29<sup>th</sup>.



Improvement to Indian Creek MS MLUSD  
August 2018 Update

---

**SCHEDULE**

The project is nearing completion with parking lot striping and additional landscape repairs taking place the week of August 27<sup>th</sup>. The architect will review the new buildings Friday August 24, 2018 to create a punch list for the modular manufacture and Wednesday August 29, 2018 to walk to site for the contractors.

**BUDGET**

As we reach completion we are projecting 3.5% of the Guaranteed Maximum Price (GMP) being expensed in contingency usage leaving roughly 70% of the allotted contingency in the district's pocket.

**PROGRESS PHOTOS**

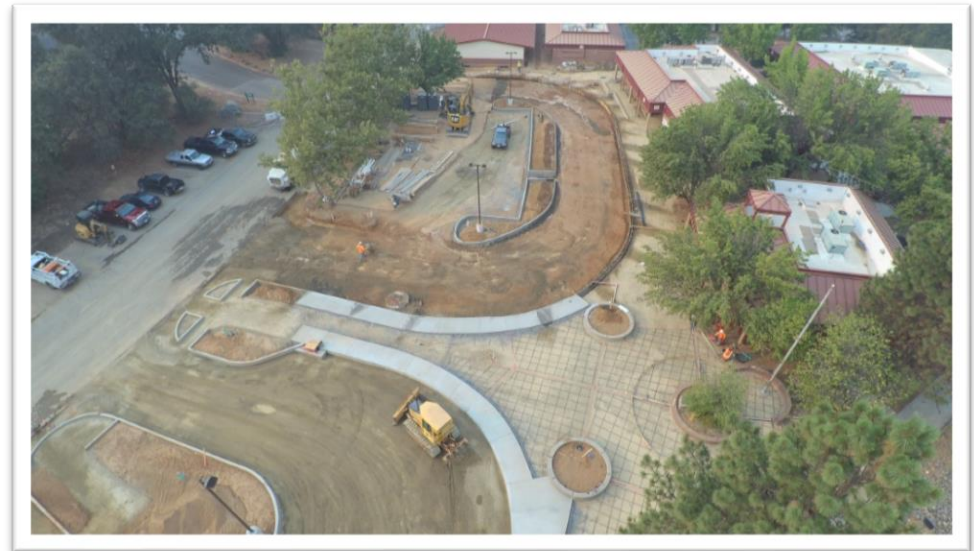


**NEW ASPHALT**

New asphalt being placed at the bus loop and student drop of area.

AERIAL VIEW

The concrete peninsula dividing the bus drop off and student drop off is being place. This will create an excellent viewpoint for supervision of the entire parking lot.



KINDER CASEWORK

All the new kindergarten classroom will be equipped with the same cubby casework for their pillows and blankets for nap time. The modular manufacture under estimated the duration to complete the interiors but managed to complete the project after some vocalizing from the team.



Improvement to Indian Creek MLUSD  
August 2018 Update

---

Couple More Photos

