

# School Lane Charter School, IB Campus

**CEEB: 390261**



Colette Weber, Principal  
Katherine Hewitt, 11<sup>th</sup> & 12<sup>th</sup> grade Principal  
Katie Kane, School Counselor 11<sup>th</sup> & 12<sup>th</sup> grade  
[Kkane@schoollane.org](mailto:Kkane@schoollane.org)  
215-245-6055 ext 436

## Contact Information:

3350 Tillman Drive  
Bensalem PA 19020  
Bucks County, PA  
215-245-6055

<https://www.schoollane.org>

## IB Campus Information:

Senior Class Size: 66  
Grades: 7-12  
Enrollment: 465  
Type of School: Public Charter  
Grading Schedule: Trimesters  
Bell Schedule: Modified Block  
Maximum Credits per Year: 7

## District Statistics:

Total students K-12: 1,351  
Free and Reduced Lunch: 52.99%  
Diversity:  
White: 36.5%  
Asian 31.2%  
Hispanic: 15.4%  
African American: 13%  
Multiracial: 3.6%  
American Indian <1%

## School Lane Charter School District Overview:

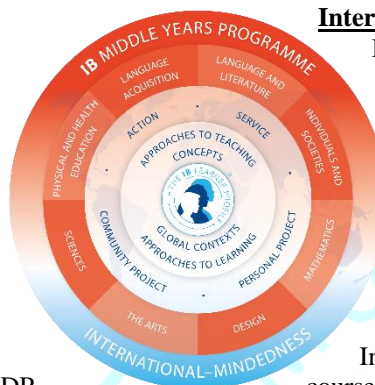
School Lane Charter School (SLCS) is a K-12 public school of choice for Bucks County and Philadelphia County students.

SLCS offers a unique public school alternative for families who demand high expectations and support for their child as an individual with specific gifts and needs. From day one, students gain confidence to explore things, discover their strengths, and constructively learn from their mistakes. SLCS practices inquiry-based and problem-based learning. Knowledge is accessed through multiple modalities, all with an authentic component. SLCS provides the building blocks throughout the grade levels that allow our 11<sup>th</sup> and 12<sup>th</sup> grade students to become self-directed learners.

	Class of 2023	Class of 2022	Class of 2021	Class of 2020
2 Year College	17%	28%	25%	30%
4 Year College	68%	45%	35%	44%
Trade/Technical School	4%	2%	5%	7%
Apprenticeship	2%	1%	3%	2%
Workforce	4%	20%	27%	15%
Military	2%	4%	3%	NA
Undecided / Not Reported	NA	NA	2%	2%
Gap Year	3%	NA	NA	NA
	68 students	75 students	60 students	59 Students

## Graduation Requirements Class of 2024

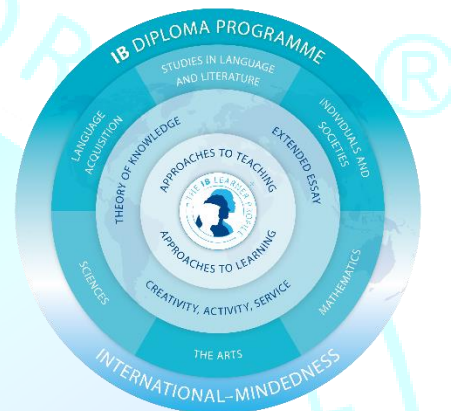
SUBJECT	UNIT OF CREDIT
English	4
Mathematics	3
Science	3
Social Studies	3
Arts and/or Humanities and/or Foreign Language	2
Health and Physical Education	1
Electives	7
Total number of credits to graduate	23



**International Baccalaureate Middle Years Program 7<sup>th</sup> to 10<sup>th</sup> grade:** As an International Baccalaureate (IB) World School, we provide students in grades 7-10 with the Middle Years Program (MYP). The MYP emphasizes interdisciplinary challenges and encourages students to make connections between their studies in traditional subjects and the real world. It fosters the development of skills for communication, intercultural understanding and global engagement - essential qualities for young people who are becoming global leaders. The MYP culminates with a Personal Project in Grade 10.

### **International Baccalaureate Diploma Program (DP) Courses 11<sup>th</sup> and 12<sup>th</sup> grade:**

DP courses are designated as courses on the student's transcript. Students take DP courses junior and senior year. Courses are taught at either standard level (SL) or higher level (HL). IB exams are administered in May at the end of the course. Students are eligible to be DP course candidates or take the Full IB Diploma program.



**The Full IB Diploma program is the most rigorous curriculum School Lane offers.** As a Full IB Diploma candidate students will take 6 IB courses in all subject areas; 3 or 4 at Higher Level and 2 or 3 at Standard Level. In addition to their courses, students complete 3 core components which includes Theory of Knowledge a course where students study the nature of knowledge, examine how we know what we claim to know and our role as a knower in the construction of knowledge.

The extended essay is a capstone project for DP students. It demands a college level independent, self-directed piece of research, culminating in a ,4000 word paper, Creativity, activity, service, (CAS) in which students complete an independently developed project and multiple experiences related to those three concepts.

**Full IB Diploma students receive a designation on their transcript and additional information about the Full IB program will be attached to their school profile.**

#### **Group 1: Language and Literature**

- DP Lang & Lit SL (two-year course)
- DP Lang & Lit HL (two-year course)

#### **Group 2: Language Acquisition**

- DP Spanish SL (two-year course)
- DP Spanish HL (two-year course)
- DP Ab Initio French SL (two-year course)
- DP Ab Initio Mandarin SL (two-year course)

#### **Group 3: Individuals and Societies (Social Sciences):**

- DP History of the Americas SL (one-year course)
- DP History of the Americas HL (two-year course)
- DP Psychology SL (one-year course)
- DP Psychology HL (two-year course)
- DP Business SL (One Year)

#### **Group 4 Sciences:**

- DP Physics SL (two-year course)
- DP Biology SL (two-year course)
- DP Biology HL (two-year course)
- DP Chemistry SL (two-year course)
- DP Societies Impact on the Environment SL (one- year course)

#### **Group 5 Mathematics:**

- DP Math Applications SL (two-year course)
- DP Math Analysis SL (two-year course)
- DP Math Analysis HL (two-year course)

#### **Group 6: Arts**

- DP Visual Arts SL (two-year course)
- DP Visual Arts HL (two-year course)
- DP Film SL (one-year course)

[Complete Course Catalog](#)



IB Program Statistics					
	22-23	21-22	20-21	19-20	18-19
Number of students registered for 1 or more IB exams	88 out of 135	78 out of 144 juniors and seniors	27 out of 60 seniors	Exams not given due to Covid-19 Pandemic	29 out of 71 seniors
Number of Exams administered	302 to seniors and juniors	183 to seniors and juniors	108 to seniors	Exams not given due to Covid-19 Pandemic	107 to seniors
Number of Full IB Diploma Candidates (Graduates)	25	8	8	6	7
Number of Candidates who were awarded the diploma	10	6	4	3	3
Class of 2024 Diploma Candidates 20 out of 66 students					
Class of 2025 Diploma Candidates 14 out of 62 students					

**Grading:** School Lane Charter School implements the International Baccalaureate grading system. Students are given a level grade 1 to 7. **A 3 is our first passing grade.** Please see the grade level conversion below. **A GPA weight of .10 was given to all DP SL courses. A GPA weight of .20 was given to all DP HL courses.** Each subject grades students' based on a rubric with multiple criterions. GPA is not reported to students until the end of their 10<sup>th</sup> grade year.

IB Grade	non-weighted	SL weight (1.1)	HL weight (1.2)
0	0	0	0
1	0.5	0.55	0.6
2	1.25	1.375	1.5
3	2	2.2	2.4
4	2.75	3.025	3.3
5	3.5	3.85	4.2
6	3.75	4.125	4.5
7	4	4.4	4.8

Class of 2024 GPA Decile (Weighted)	
Top 10%	4.1714-4.075
20%	4.07-4.0131
30%	3.9833-3.9233
40%	3.9214-3.7058
50%	3.6756-3.4081
60%	3.3839-3.1535
70%	3.0476-2.8837
80%	2.8209-2.5688
90%	2.5116-2.3554
100%	2.211-1.843