



Recommended High School Boundary Changes for 2017-2018

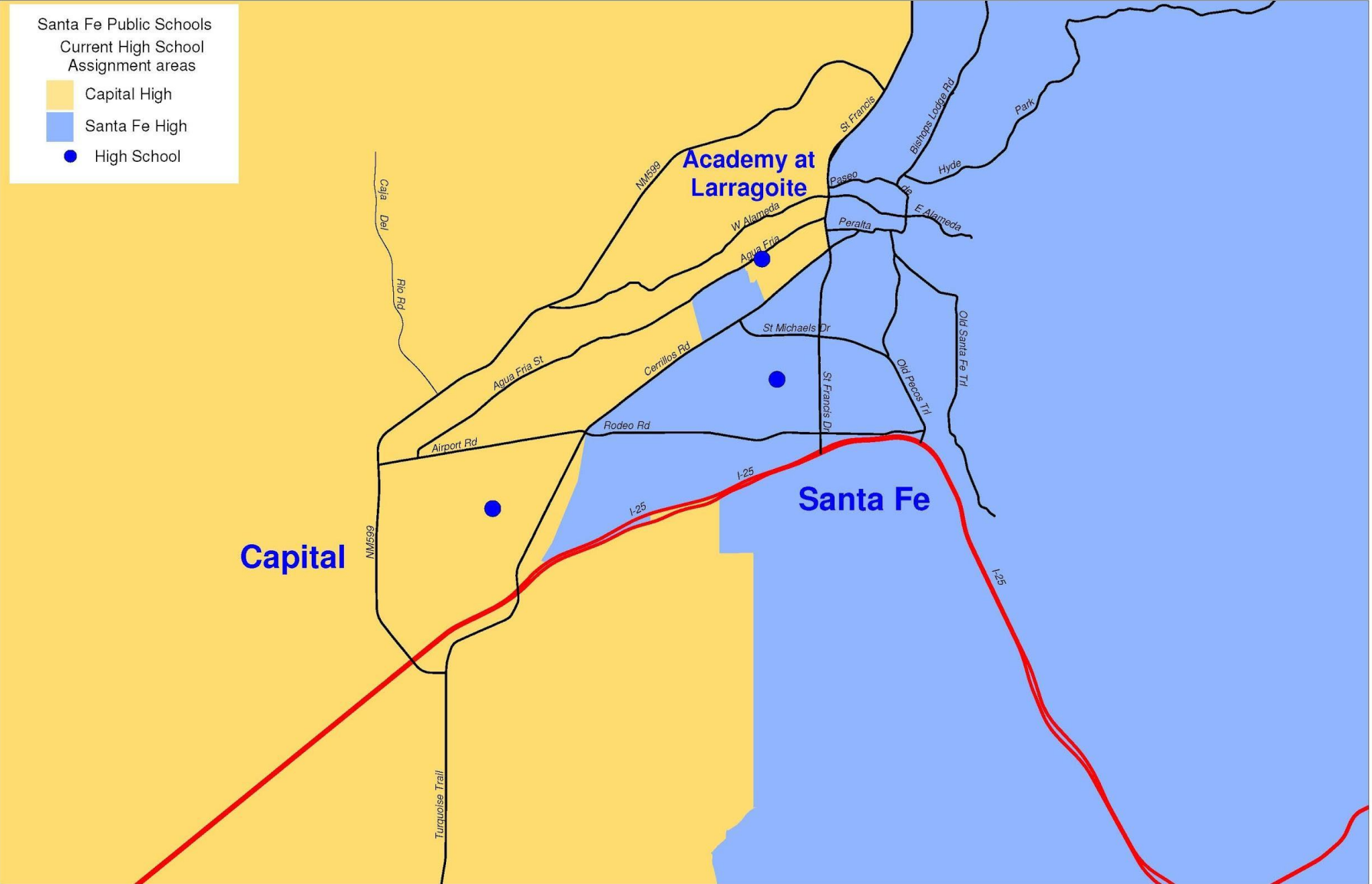
December 6, 2016
Board of Education Meeting

Presenter:
Kristy J. Wagner, Chief Operations Officer

Veronica C. Garcia, Ed.D.
Superintendent of Schools

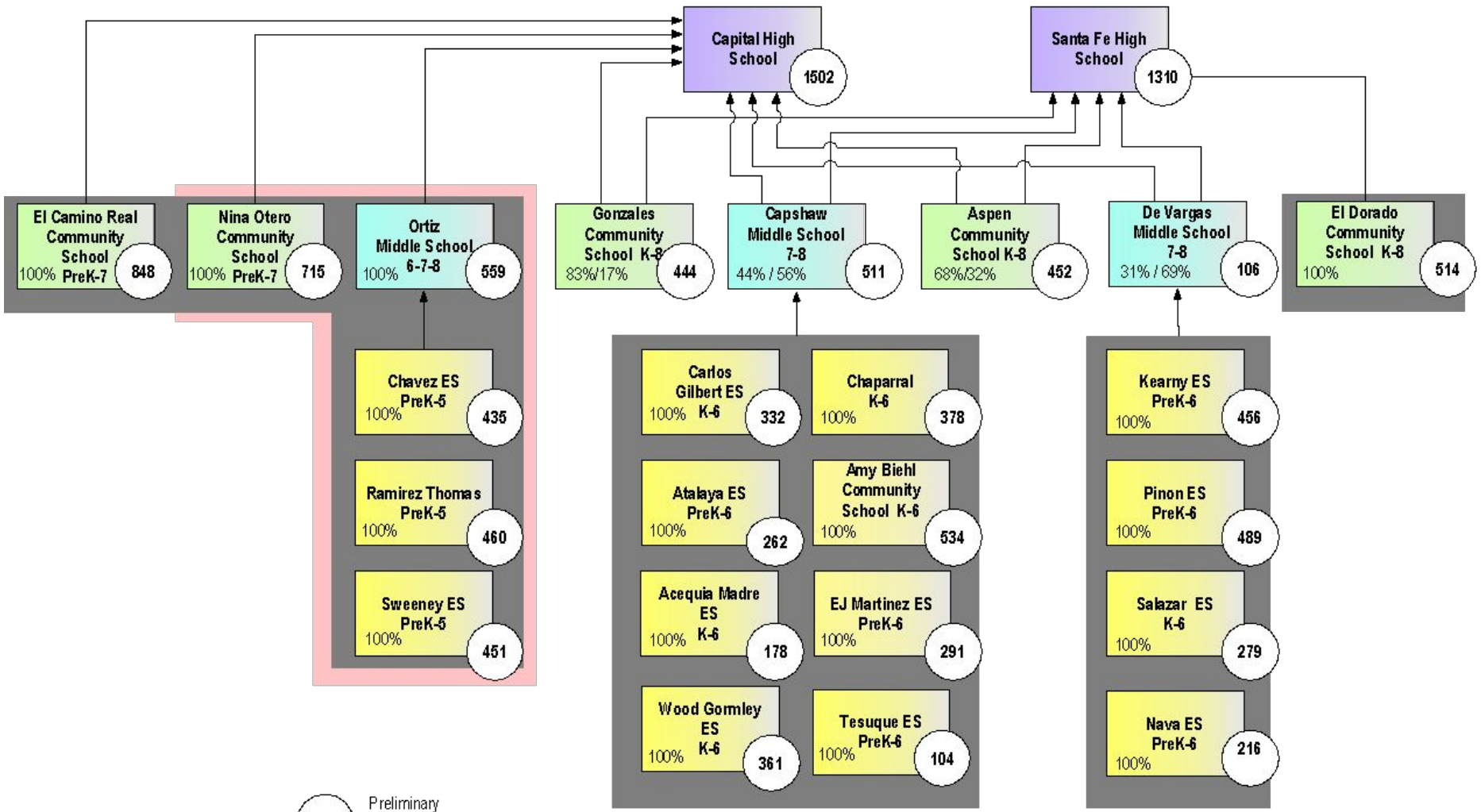


Current Assignment Areas





Current School Flow Chart

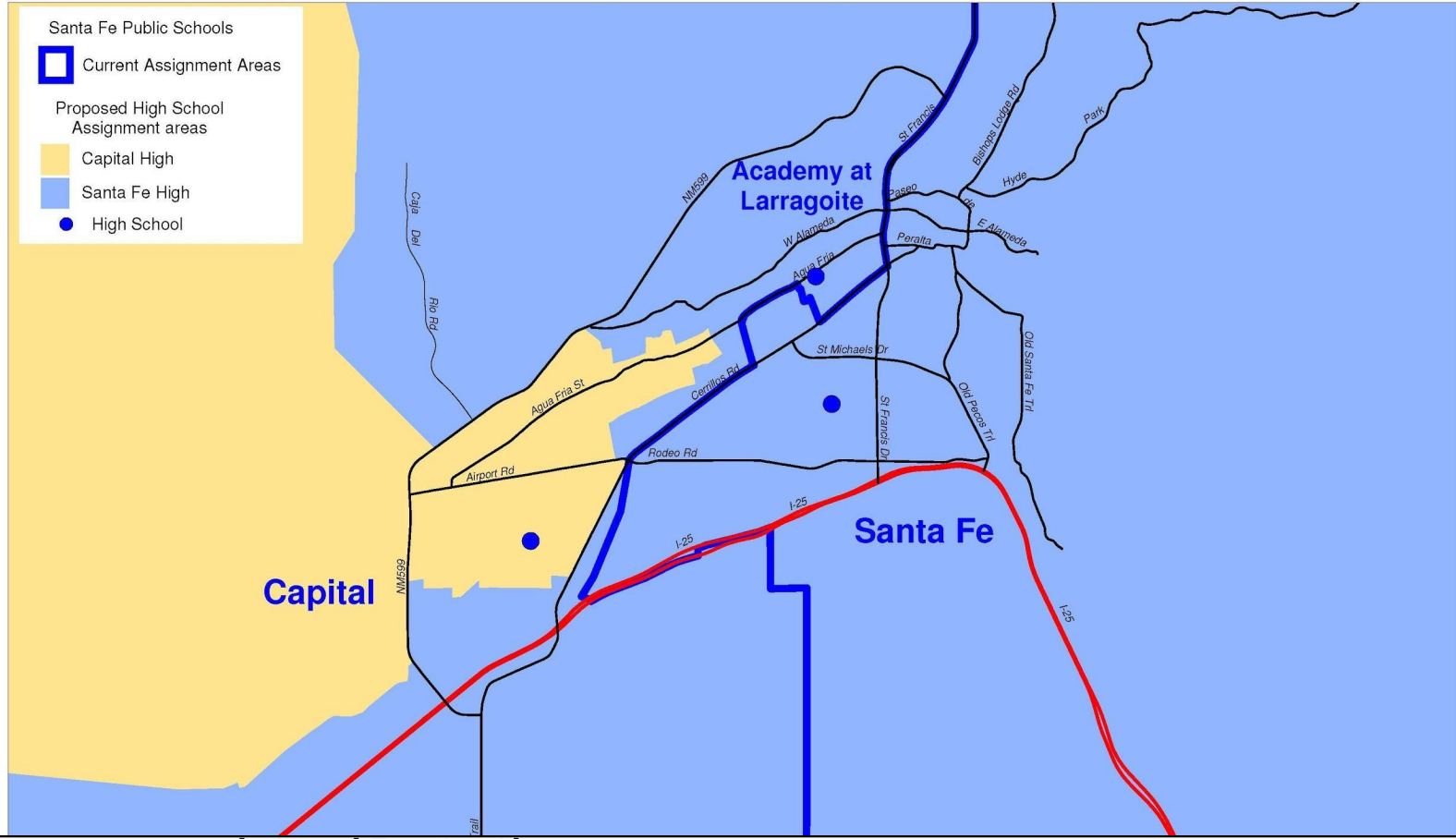


Current
(Fall 2016)

558 Preliminary PED reporting Enrollment
 100% feeder [Grey Box]
 Southside [Pink Box]



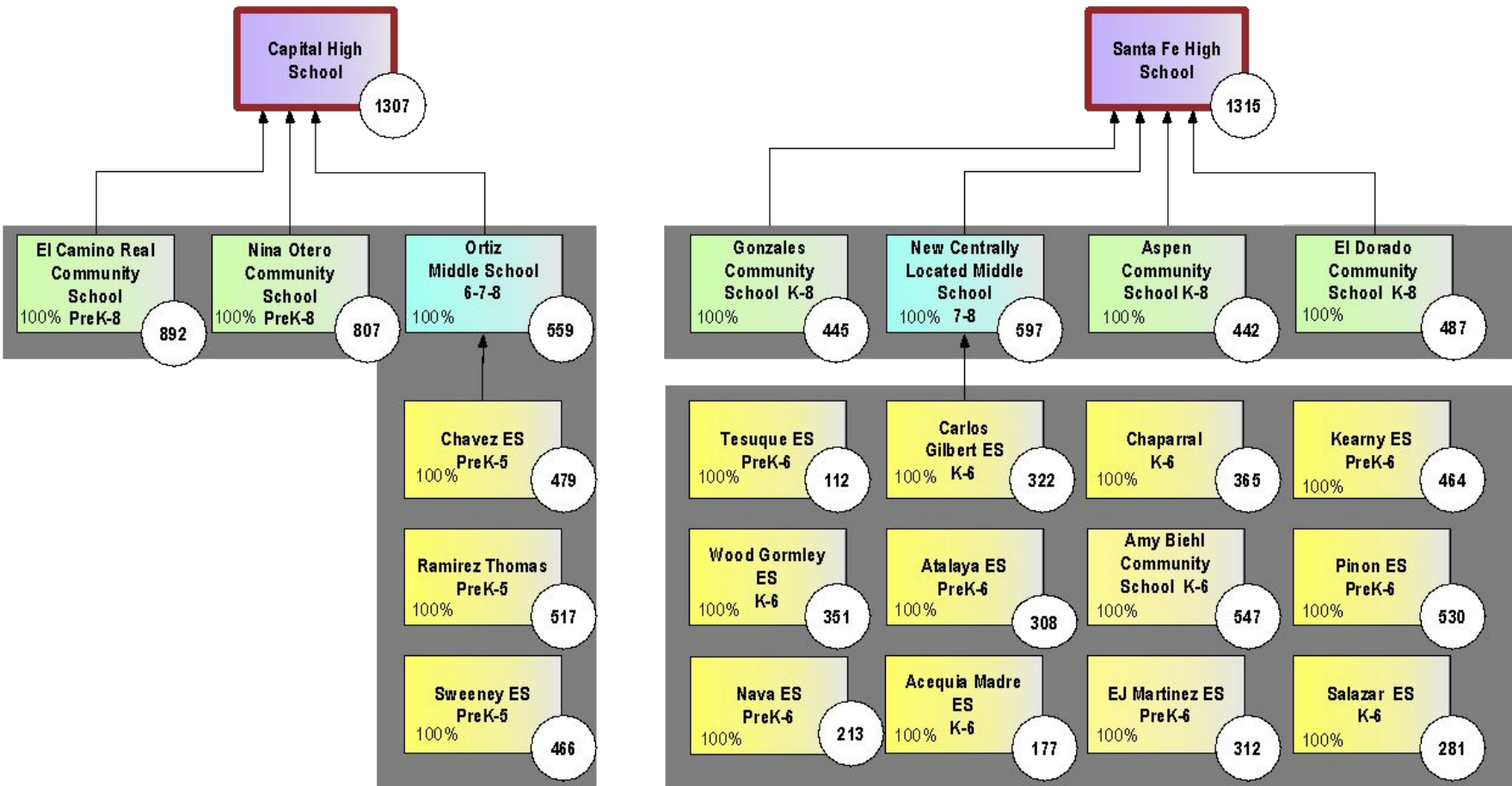
Proposed High School Assignment Area



School	Grades	Functional Capacity	2017-18	2018-19	2019-20	2020-21	2021-22	2022-23	2023-24	2024-25	2025-26
Academy at Larragoite	9-12	325	66	82	96	126	125	121	118	114	116
Capital High	9-12	1257	1,307	1,167	1,095	1,059	1,050	1,075	1,113	1,119	1,127
Early College Opportunity	9-12	285	236	270	285	290	290	290	290	290	290
Mandela International	9-12	200	127	160	168	168	168	169	168	167	168
Santa Fe High	9-12	1554	1,315	1,405	1,569	1,710	1,813	1,812	1,801	1,718	1,654



Proposed School Flow Chart



Proposed

558 Projected Enrollment for Fall 2017

100 % feeder

Boundary Change



Summary of 2017 Facility Master Plan Findings Continued

- Enrollment at CHS continues to increase, while at SFHS, projections are relatively flat. (The FMP capacity analysis suggests that growth at CHS can be relieved by excess capacity at SFHS (with facility improvements))
- Capacity for middle school students exceeds enrollment by about 1,500 seats (Most of the additional seats are at K-8 schools and are due to the current scheduling/staffing model.)



Summary of 2017 Facility Master Plan Findings Continued

- Facility conditions at Chaparral, EJ Martinez, and Francis X Nava require additional study to best guide rebuilding or replacement of the schools



Findings of High School Boundary Study

- Both high schools will require significant capital improvements over the next several bond cycles.
- Enrollment growth at Capital High School can be addressed by using available capacity at SFHS (with facility improvements to be identified by the FMP).
- Alignment of the high school boundaries will assign our future high school enrollments to:
 - optimize the facility capacity of each campus
 - best meet program needs
 - prioritize capital improvement projects within our limited resources



Enrollment Projections without Boundary Changes

School	Grades	Functional Capacity	2017-18	2018-19	2019-20	2020-21	2021-22	2022-23	2023-24	2024-25	2025-26
Acequia Madre	K-6	170	171	147	145	143	142	139	138	137	137
Amy Biehl	K-6	515	537	540	535	561	559	585	584	578	575
Atalaya	PK-6	284	287	296	291	285	278	265	264	263	263
Carlos Gilbert	K-6	350	311	289	294	302	307	307	308	307	308
César Chavez	PK-5	525	469	471	491	491	504	502	499	501	501
Chaparral	K-6	440	390	394	392	393	396	393	392	390	391
EJ Martinez	PK-6	374	326	317	307	297	290	296	296	297	300
Kearny	PK-6	536	463	451	444	441	433	425	423	421	423
Nava	PK-6	285	199	175	162	151	151	153	154	154	155
Piñon	PK-6	545	523	526	539	542	554	572	578	582	586
Ramirez Thomas	PK-6	549	549	539	528	517	519	518	517	521	521
Salazar	K-6	461	324	328	323	331	333	340	338	337	338
Sweeney	PK-6	560	485	475	476	488	496	497	494	496	495
Tesuque	PK-6	146	114	116	113	109	103	103	103	102	102
Wood Gormley	K-6	386	357	346	328	329	332	327	326	324	325
Aspen Community	K-8	617	441	438	434	428	422	428	432	438	435
El Camino Real	PK-8	1077	895	898	888	878	846	819	803	795	796
El Dorado	K-8	744	491	469	458	445	437	435	428	428	426
Gonzales	K-8	633	443	430	416	420	417	400	401	394	392
Nina Otero	PK-8	924	866	876	888	901	917	894	866	845	841
New Centrally Located MS	7-8	650	620	624	642	623	607	596	587	602	589
Mandela International	7-8	100	96	98	97	97	97	96	97	97	97
Ortiz	6-8	883	590	628	634	620	602	614	616	625	620
Academy at Larragoite	9-12	325	61	77	93	125	123	119	116	112	114
Capital High	9-12	1280	1,262	1,294	1,385	1,458	1,533	1,587	1,613	1,590	1,561
Early College Opportunity	9-12	285	236	280	280	300	300	300	300	300	300
Mandela International	9-12	200	126	159	164	168	167	169	168	167	168
Santa Fe High	9-12	1564	1,386	1,306	1,314	1,329	1,349	1,319	1,319	1,264	1,239



Desired Outcomes of Recommended Boundary Changes

- Assign boundaries to best align enrollment to facility capacities
- Create *pure middle school feeders
- Improve program articulation to contribute to better learning outcomes
- Align athletic and extracurricular activities to strengthen programs
- Plan for appropriate capital improvement projects for this and future bonds

**“Pure Feeders” -- Students from a single middle school assignment area are all assigned to the same high school for 9th grade.*



Assumptions for Implementation of Boundary Changes

- 9th graders will attend newly assigned school beginning in 2017
- 10th through 12th graders will be allowed to remain at their current high school
- Transfer requests are approved up to program capacity
- Enrollment and transfer trends will continue
- Established transfer policy will continue



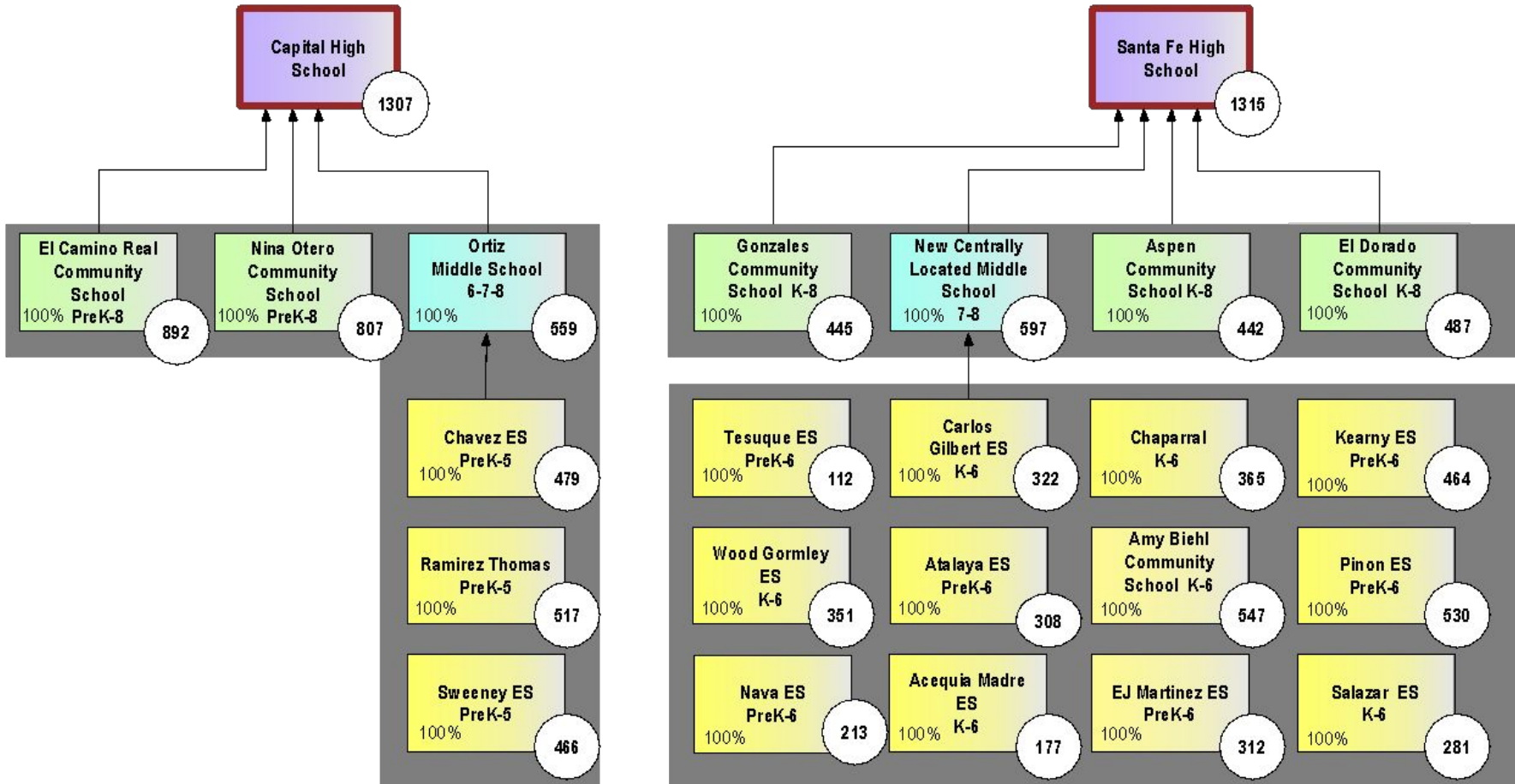
Current Transfer Matrix

Preliminary PED Reporting Enrollment		Capital	Santa Fe	Academy at Larraguioite	ATC Charter	Detention Center	Early College Opportunities	Engage	Homebound	Mandela International	Private School	TEP	Zia Behavioral Schools	Total Living in Area	Transfers out	% of Area attending School	
Grade 9-12		Reading across, figures show number of students living in assignment area.															
Capital	Reading down, figures show number of students attending school.	1467	307	42	151	3	82	55	1	40	6	1	1	2156	689	68%	
Santa Fe		31	978	30	80	2	82	20	2	45	5		4	1279	301	76%	
Not Located			1									1			2		
Outside		4	24	2	5	3	6	5							49		
Enrollment		1502	1310	74	236	8	170	80	3	85	12	1	5	3486	990		
Transfers In		35	331												366		
% of School from Area		98%	75%														

- 307- number of students living in Capital's area, but attending Santa Fe High
- 31- number of students living in Santa Fe's area, but attending Capital High
- 98% - percent of students attending Capital High AND living in the assigned area
- 75% - percent of students attending Santa Fe High AND living in the assigned area



Proposed School Flow Chart



Proposed

558 Projected Enrollment for Fall 2017

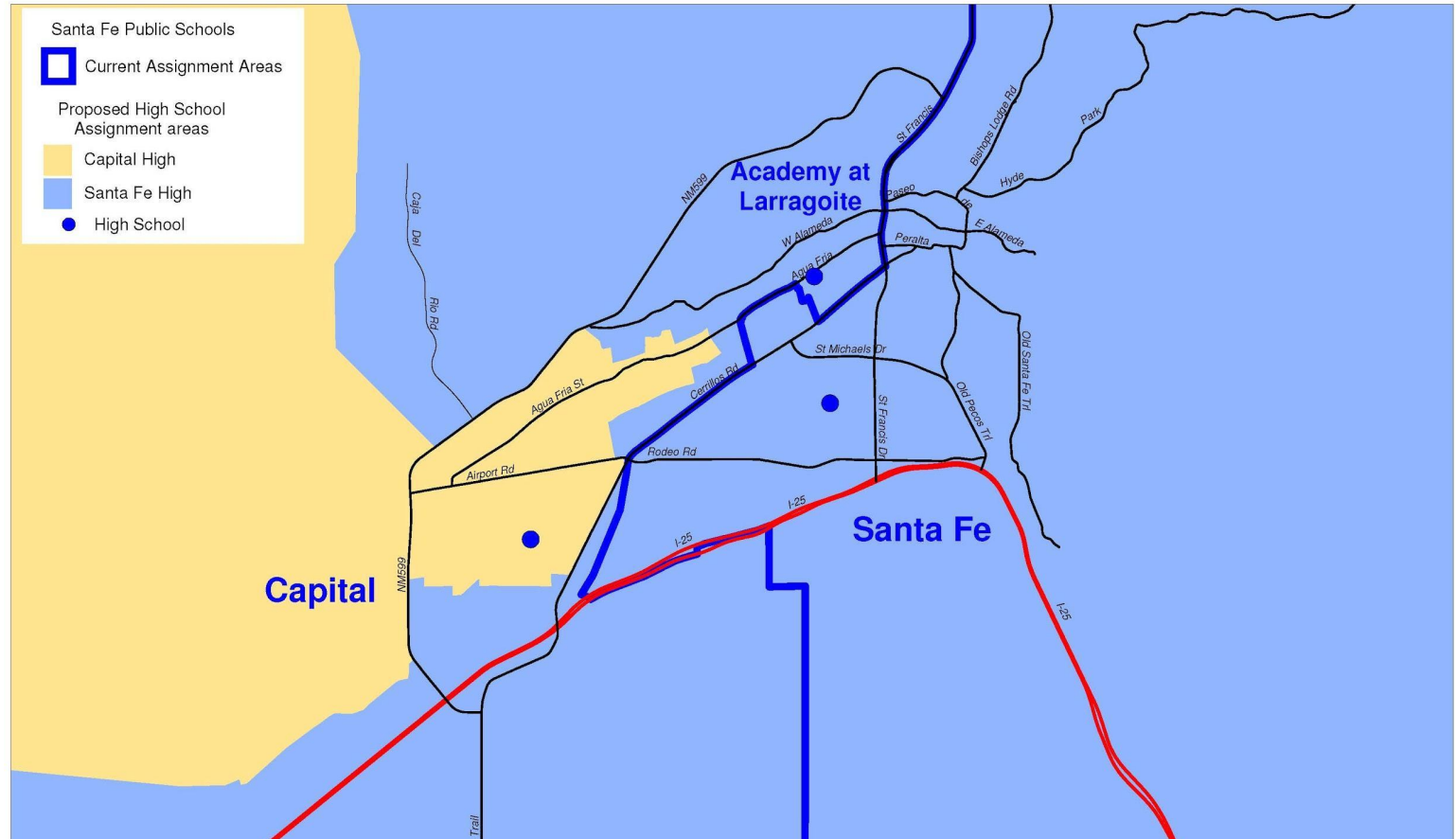
100 % feeder



Boundary Change



Proposed High School Assignment Area



School	Grades	Functional Capacity	Enrollment Projections								
			2017-18	2018-19	2019-20	2020-21	2021-22	2022-23	2023-24	2024-25	2025-26
Academy at Larragoite	9-12	325	66	82	96	126	125	121	118	114	116
Capital High	9-12	1257	1,307	1,167	1,095	1,059	1,050	1,075	1,113	1,119	1,127
Early College Opportunity	9-12	285	236	270	285	290	290	290	290	290	290
Mandela International	9-12	200	127	160	168	168	168	169	168	167	168
Santa Fe High	9-12	1554	1,315	1,405	1,569	1,710	1,813	1,812	1,801	1,718	1,654



Summary of Process

- Two public meetings were held in November
- Meetings attended by 7 persons
- Attendees were interested in how changes affect their boundary assignment (for new home purchases and existing)
- Athletic department at CHS provided extensive feedback on program, facility, and participation
- Conducted a study of transportation costs
- BOE action item December 6
- Implementation beginning fall 2017
- Next areas of study: Pre-k expansion, South & SW elementary & K-8 school enrollments