

# CAREER EXPLORATION

Hanna More

**“Obstacles are those frightful things  
you see when you take your eyes off  
the goal.”**

- ▣ <https://www.youtube.com/watch?v=-O7v4EJx-g&feature=youtu.be>
- ▣ What students need to hear.

# What is your Interest Profile Type?

- ▣ S – Social
- ▣ R- Realistic
- ▣ I – Investigative
- ▣ C – Conventional
- ▣ A- Artistic
- ▣ E- Enterprising

# Realistic

- ▣ Realistic people are DOERS. They are often good at mechanical or athletic jobs. They like to work with things like machines, tools or plants and they like to work with their hands.
- ▣ Agriculture, Food and Natural Resources  
Architecture and Construction  
Arts, A/V Technology and Communications  
Health Science  
Hospitality and Tourism  
Information Technology  
Law, Public Safety, Corrections and Security  
Manufacturing  
Science, Technology, Engineering and Mathematics  
Transportation, Distribution and Logistics

# Investigative

- ▣ Investigative people are THINKERS. They like to analyze and solve problems. They often like to work independently and tend to be good at math and science.
- ▣ Health Science  
Information Technology  
Law, Public Safety, Corrections and Security  
Science, Technology, Engineering and Math

# Artistic

- ▣ Artistic people are CREATORS. They like to work in situations where they can use their creativity and come up with new ideas. They enjoy performing (theater or music) and visual arts.
- ▣ Arts, A/V Technology and Communications  
Education and Training  
Hospitality and Tourism  
Human Services  
Marketing, Sales and Service

# Social

- ▣ Social people are HELPERS. They like to work directly with people rather than things. They are often good public speakers and enjoy helping others.
- ▣ Arts, A/V Technology and Communications  
Education and Training  
Government and Public Administration  
Health Science  
Human Services  
Law, Public Safety, Corrections and Security  
Marketing, Sales and Service

# Enterprising

- ▣ Enterprising people are PERSUADERS. They like to work with other people and enjoy being a leader. They particularly enjoy influencing, persuading and performing.
- ▣ Related Career Clusters:
  - Arts, A/V Technology and Communications
  - Business, Management and Administration
  - Finance
  - Government and Public Administration
  - Hospitality and Tourism
  - Law, Public Safety, Corrections and Security
  - Marketing, Sales and Service



# Conventional

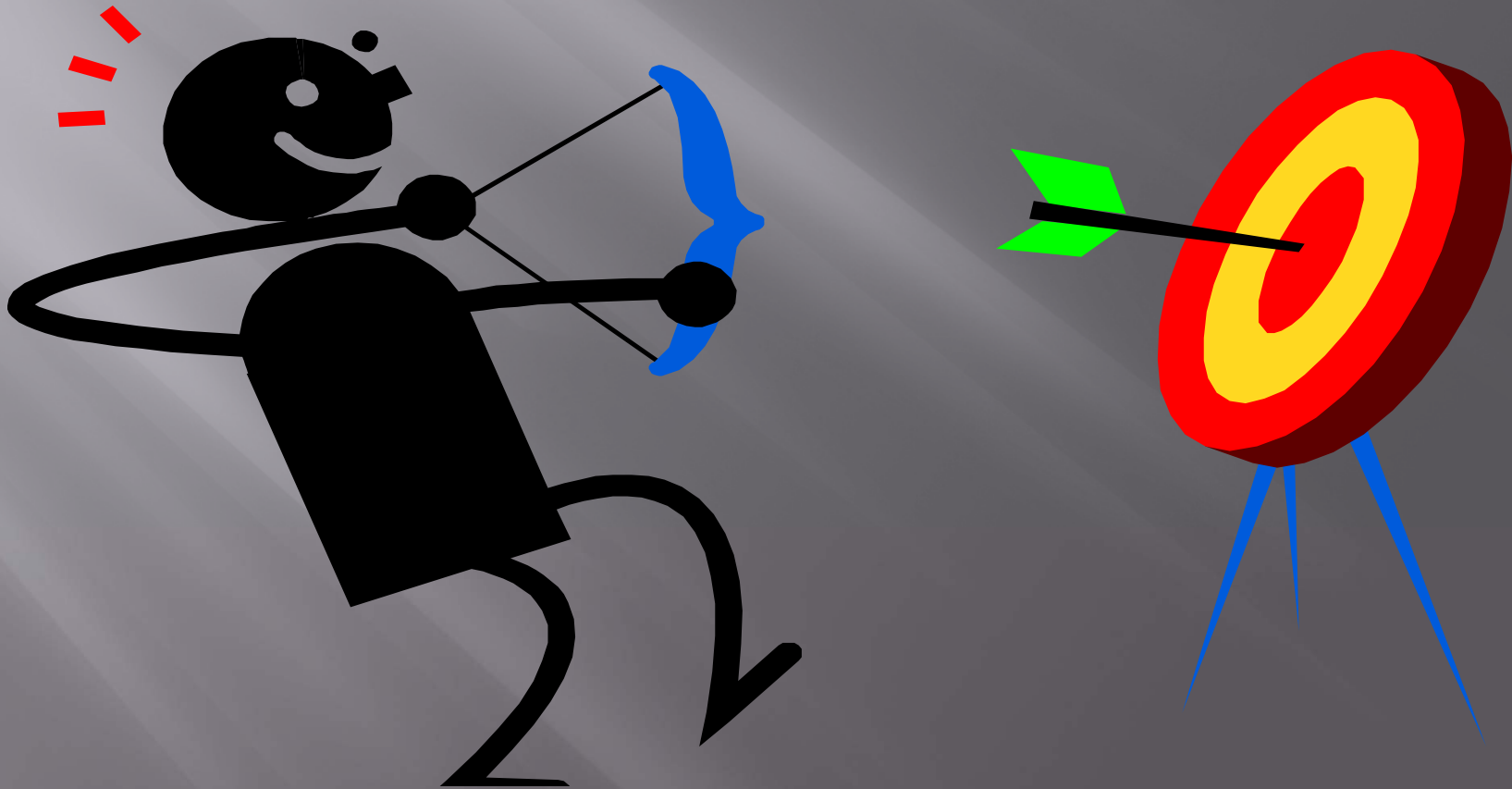
- ▣ Conventional people are ORGANIZERS. They are very detail oriented and like to work with data and numbers.
- ▣ Related Career Clusters:
  - Architecture and Construction
  - Business, Management and Administration
  - Finance
  - Health Science
  - Manufacturing
  - Marketing, Sales and Service
  - Transportation, Distribution and Logistics

# Interest Assessment

- ▣ [MNCAREERS.ORG](http://www.mncareers.org)
- ▣ <http://www.iseek.org/careers/assessyourself.html>
- ▣ Interest Assessment Read each statement below. If you agree, select the corresponding checkbox.
- ▣ **I like to:**
- ▣ ...do puzzles ...work on cars ...attend concerts, theaters or art exhibits ...work in teams ...organize things like files, offices or activities ...set goals for myself ...build things ...read fiction, poetry or plays ...have clear instructions to follow ...influence or persuade people ...do experiments ...teach or train people ...help people solve their problems ...take care of animals ...have my day structured ...sell things ...do creative writing ...work on science projects ...take on new responsibilities ...heal people ...figure out how things work ...put things together or assemble models ...be creative ...pay attention to details ...do filing or typing ...learn about other cultures ...analyze things like problems, situations or trends ...play instruments or sing ...dream about starting my own business ...cook ...act in plays ...think things through before making decisions ...work with numbers or charts ...have discussions about issues like politics or current events ...keep records of my work ...be a leader ...work outdoors ...work in an office ...work on math problems ...help people ...draw ...give speeches

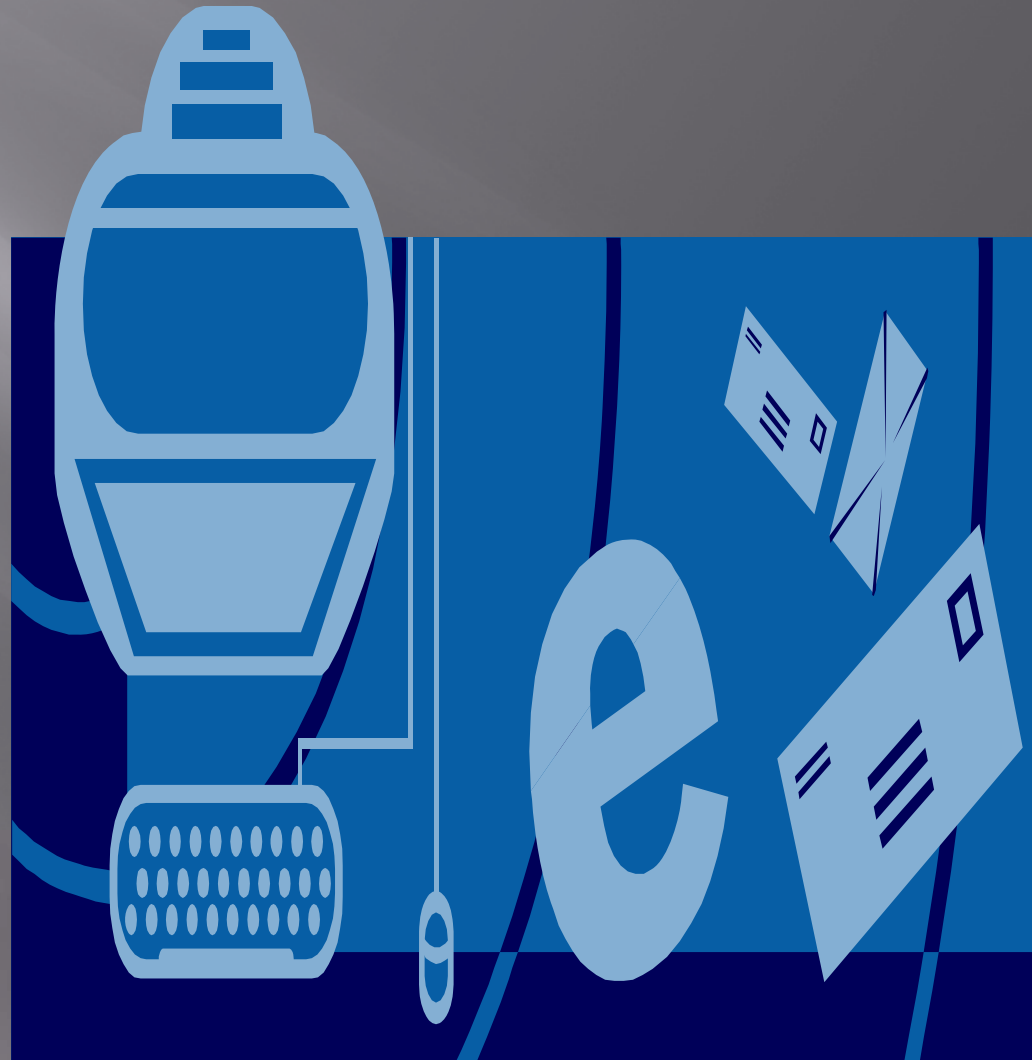
# Online MnCareers Interest Assessment

- ▣ Fill it out now.



# What is your Interest Assessment?

- ▣ SEC?
- ▣ AEC
- ▣ AEI
- ▣ SIC
- ▣ ECT!!



# Explore your career Field

- ▣ <http://www.asvabprogram.com/>
- ▣ <http://online.onetcenter.org/>
  - ▣ Browse by O\*NET Descriptor
    - ▣ From Interest Code
- ▣ <http://www.bls.gov/oco/ocos160.htm#earnin>
- ▣ +  
<http://www.ohe.state.mn.us/sPages/interestAssessment.cfm> FHS student service\*

# TAKE THE TOP 3 RES/C

R	=	Realistic	Total: 4
I	=	Investigative	Total: 0
A	=	Artistic	Total: 0
S	=	Social	Total: 2
E	=	Enterprising	Total: 4
C	=	Conventional	Total: 2

## Interest Assessment

### Your Interest Assessment Results

Here are your results:

# Assignment

- ▣ District Goal
- ▣ Compare and contrast two careers by entering the wages of each career and the future growth increase or decrease. Remember to put final answer in percentage.
  - Career one:
    - ▣ SI Cluster \_\_\_\_\_
    - ▣ Wage \_\_\_\_\_ (35,000.00)
    - ▣ Growth \_\_\_\_\_ (8%)
  - Career two:
    - ▣ SI Cluster \_\_\_\_\_
    - ▣ Wage \_\_\_\_\_ (50,000.00)
    - ▣ Growth \_\_\_\_\_ (15%)
- ▣ What is the wage/ growth difference  $W=$  \_\_\_\_\_  $G=$  \_\_\_\_\_
- ▣ What web site did you use to obtain information  
www. \_\_\_\_\_