

What Do Gifted Services Look Like?

Students receive pull-out gifted services usually two times per week anywhere from 30-45 minutes. Times vary according to student needs. Each quarter, extensions of classroom work or project-based learning in a student's area of interest will be completed.

Students may also have the opportunity to do the following:

- Gifted field trip once a year
- "Gifted Gatherings" with other area students, in which they will be given the chance to challenge their thinking and meet other gifted kids.
- Contests/competitions the students may be interested in.
- Parents/students will be made aware of opportunities for gifted/high-ability students (i.e. camps, programs, etc.)



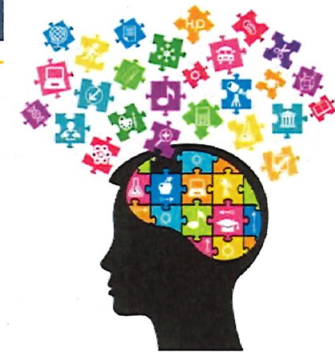
Serving Nemaha Central, SPPS,
Centralia, and Frankfort Schools

Gifted Facilitator- Karla Kramer

Director- Shana Steinlage

School Psychologist- Lori Bergman

MNESC Office- 785-336-2173



Gifted Services

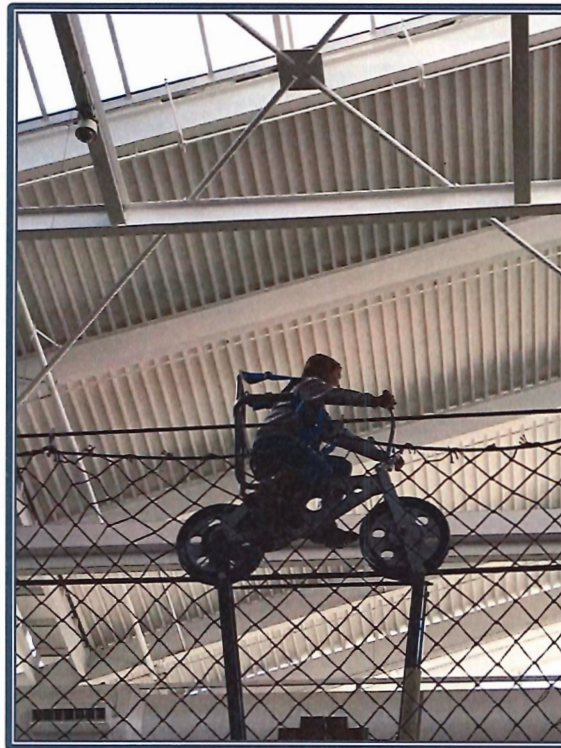
Marshall-Nemaha Special
Education Cooperative

How Does My Child Qualify for Gifted Services?

Students must meet the following criteria:

- 97th percentile or above on standardized IQ testing.
- 95th percentile or above on standardized achievement testing.
- Show a need for enrichment beyond what is available in the regular education classroom.
- Kansas guidelines for placing a student are followed.

In Kansas, "Gifted" means performing or demonstrating the potential for performing at significantly higher levels of accomplishments in one or more academic fields due to intellectual ability, when compared to others of similar age, experience, and environment.



FAQ's

How long will my child stay in the gifted program?

- Students will remain in the gifted program until H.S. graduation

Will my child have a different teacher in high school?

- The same gifted teacher covers elementary, middle, and high school.

What if my child decides they no longer want to be in the gifted program?

- Services can be revoked at any time.

What Does the Referral Process Look Like?

1. Teacher, parent, or student contacts the gifted facilitator, principal, or school psychologist about referring.
2. Data is reviewed and the regular education teacher along with the gifted facilitator will determine interventions to be completed and implemented in the regular education classroom.
3. Once general education interventions have been completed and assessed, the school psychologist will complete a screener (K-BIT).
4. If the student scores at the 90th percentile or above on the K-BIT screener, a full evaluation will be completed.
5. Results of the IQ test, academic testing, and gen ed intervention assessments will determine eligibility.
6. An evaluation meeting with parents, teachers, administration, and school psychologist will be held to share results.
7. If the student qualifies, an IEP will be drafted and initiated in conjunction with the evaluation meeting.