

1. Executive Summary

Siemens Industry Inc., Building Technologies Division, is pleased to provide Regional School Unit No. 12 (RSU 12) with the Year 1 annual savings report. The Siemens Energy Performance Contract guaranteed **\$72,682** in annual savings for Annual Period 1 (Table 1). Realized savings for the first annual period were **\$74,461** which includes **\$65,800** in measured and verified savings and **\$8,661** in operational savings, exceeding the current year guarantee by **\$1,779**. Associated energy savings are summarized in Table 2.

Accumulated realized savings to date are **\$141,156**, which is inclusive of the guaranteed construction period savings. Total project savings are **\$47,347** in excess of the **\$93,809** in total guaranteed savings.

Table 1 - Cost Savings by Annual Period

Annual Period	Measured & Verified Savings (\$)	Total Realized Energy Savings (\$)	Operational Savings (\$)	Total Realized Savings (\$)	Guaranteed Savings (\$)	Excess/ Shortfall in Savings (\$)
Construction	\$66,695	\$66,695	\$0	\$66,695	\$21,127	\$45,568
1	\$65,800	\$65,800	\$8,661	\$74,461	\$72,682	\$1,779
Total	\$132,495	\$132,495	\$8,661	\$141,156	\$93,809	\$47,347

Table 2 - Energy Savings by Annual Period

Energy Savings	Electric Energy Savings (kWh/yr)	#2 Fuel Oil Savings (Gal/yr)	Propane Savings (Gal/yr)	Wood Chip Savings (Ton/yr)
Guaranteed Construction	80,105	6,133	(5,884)	5.6
Realized Construction	245,348	19,158	(17,279)	17.9
Guaranteed	242,742	18,584	(17,830)	17.0
1	233,353	19,082	(16,738)	17.9
Total	478,702	38,240	(34,017)	36

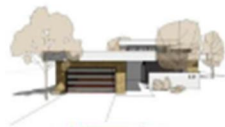
A brief summary of the project scope of work is presented below:

- Lighting Retrofits & Occupancy Sensors
- Walk-in Cooler/Freezer Controls
- Building Automation
- Building Envelope
- Destratification Fans
- Hybrid Boiler & DHW
- Vending Misers
- Solar Fresh Air Heating system

2. Greenhouse Gas Emissions Reduction

The reduction of energy consumption also benefits the environment by decreasing the amount of carbon dioxide (CO₂) and greenhouse gas emissions released into the atmosphere. RSU 12 reduced its annual emissions by **204 metric tons** during the current annual period.

Based on the most recent annual period's energy consumption, your portfolio's emissions reductions are equivalent to:



CO₂ emissions from 19 homes' energy use for one year



Annual GHG emissions from 43 passenger vehicles



Carbon sequestered by 5,233 seedlings grown for 10 years

Figure 1 – RSU12 Annual Period Reduction in Greenhouse Gas Emissions