



TTI ENVIRONMENTAL, INC
Consulting & Contracting

1253 North Church Street, Moorestown, NJ 08057
www.ttienv.com o 856-840-8800 f 856-840-8815

December 1, 2017

Dr. Maryann Banks
Interim Superintendent
Pinelands Regional School District
520 Nugentown Road, Little Egg Harbor, New Jersey 08087

Reference: Inspection for Roofing Materials– Pineland Regional School Grounds
Pinelands Regional High School
TTI Project No. 17-1224

Dear Dr. Banks:

On November 28, 2017, TTI Environmental, Inc.'s (TTI) United States Environmental Protection Agency (USEPA) Accredited Asbestos Building Inspectors, James Orgera (#ACC-0617-6-006) and Curt Sims (#ACC-0617-6-0006) performed a visual inspection for suspect asbestos-containing roofing materials on the grounds and sports fields adjacent to the Pinelands Regional HS and Junior HS. A site plan of the inspection area can be found in Attachment 1.0.

During the visual inspection of the grounds TTI's asbestos inspectors found two (2) suspect asbestos-containing roofing materials. One (1) suspect roofing material was discovered in the front of the HS by the Wildcat Pride Sign. This material was an approximately three (3) square inch black shingle material on one side with a tan fibrous material on the other side. The other suspect material roofing material was discovered past the driveway near the tree/brush line on the north side of the Annex. This material was an approximately two (2) square inch black asphalt roofing type material. TTI collected the two (2) materials and had them analyzed for asbestos.

Laboratory analysis of the suspect ACBM revealed that neither of the materials sampled (Table 1.0) to have an asbestos content of greater than one percent (1%). Laboratory analysis were performed by an Accredited Laboratory and included Polarized Light Microscopy (PLM) and, where necessary. Transmission Electron Microscopy (TEM).

Table 1.0: Roof Debris Testing Results Summary			
No.	Location	Material	Results
01	Exterior Front of HS under Pride Sign	Layer#1 - Shingle	None Detected by TEM
		Layer#2 - Flashing	None Detected by TEM
		Layer#3 - Insulation	None Detected by PLM
		Layer#4 - Insulation	None Detected by PLM
02	North Side of Annex at Tree Line	Roofing	0.45% Chrysotile

In summary, the visual inspection performed by TTI on November 28, 2017 only revealed two (2) suspect roofing materials within the large inspection area. The laboratory analysis of these materials confirmed these materials to be less than one (1) percent asbestos and, as such, a non-asbestos building material. The Environmental Protection Agency (EPA) defines asbestos-containing building materials as any building material which contains greater than one (1) percent asbestos.

TTI's inspection on November 28, 2017 did not reveal any conditions during the survey that would restrict or interfere with their current use.

If you should have any questions or require additional information, please feel free to contact me directly.

Sincerely,

TTI ENVIRONMENTAL, INC.

James A. Guilardi
James A. Guilardi
Senior Project Manager



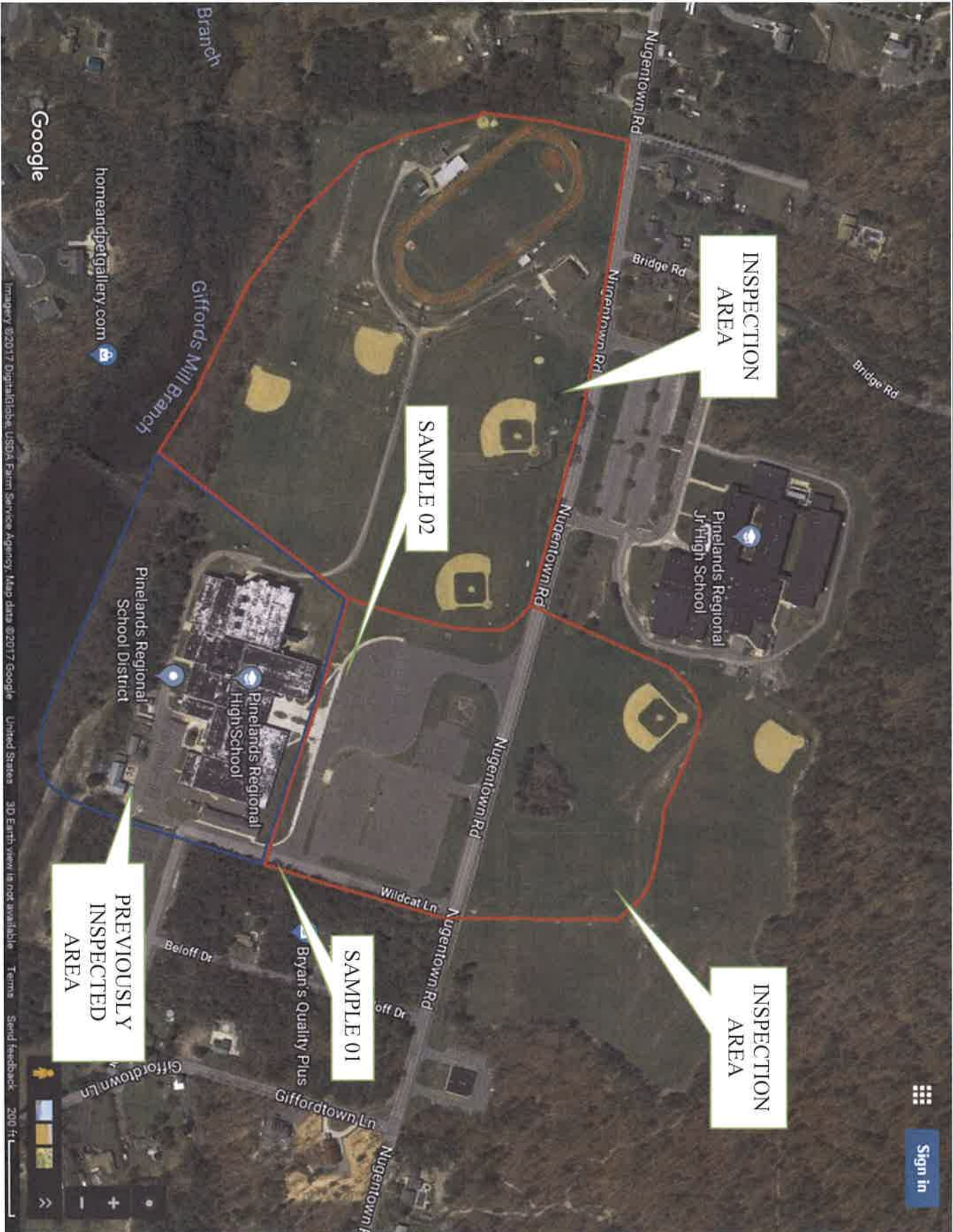
ATTACHMENT 1.0

Inspection Site Map



TTI Environmental, Inc.
www.ttienv.com

PINELANDS REGIONAL HIGH SCHOOL
565 Nugentown Road, Little Egg Harbor, NJ



Google

Imagery ©2017 DigitalGlobe, USDA Farm Service Agency, Map data ©2017 Google, United States 3D Earth view is not available Terms Send feedback 200 ft

SCALE	NTS	DRAWN BY	DC	DATE	12/2017
PROJECT	17-1224	APP'D BY	JG	DRAWING NO	SAMPLES