



Principal's Report to the BUSD School Board May 2018

Current Alt Ed Enrollments: 56 students total (approximately 9% of BUSD High Schoolers)

PGHS: 30 students BIS: 20 students KBS: 6 students (2 middle school)

Prospective 2018 Graduates: PGHS: 19, BIS: 10 (20% of the 2018 BUSD Senior Graduating Class)

*e note the associated LCAP goals under each of the headings in this report.**

Goal 1: Prepare students with the skills to excel in college and career.

Goal 2: Increase the quality of instruction for all students by deepening implementation of the Common Core State Standards, and by implementing Explicit Direct Instruction district-wide.

Goal 3: Ensure all student populations achieve annual measurable academic growth.

Goal 4: Implement a plan to increase students' sense of feeling safe and connected at school.

PGHS Receives a 6-Year WASC Accreditation!

Associated LCAP Goals: 1) College and Career

I am thrilled to share that after reviewing our 2018 self-study report and the recommendations from the WASC visiting team this past February, the Accrediting Commission for Schools, Western Association of Schools and Colleges (WASC) granted PGHS a **six-year accreditation status** with a mid-cycle one-day visit through June 30, 2024!!! ([See official letter linked here.](#))

High school accreditations typically fall within 3 categories: a 1-year (for schools who are in general failing and in need of serious intervention), 3-year (typical of most WASC accreditations), and 6-year (more rare, given to schools who are exemplary in demonstrating structures and success in each of the 5 categories that WASC requires). So, this is as good of an accreditation and school program evaluation as you can get. We are so proud that our school has been recognized for providing quality and effective services for our district's most academically at-risk students. This validates our efforts and also provides some strong support for moving forward (hopefully as early as next year) to apply for Model Continuation School status within the California Continuing Education Association (CCEA).

Dog Training Program - a Bonafide Success

Associated LCAP Goals: 3) Academic Growth, 4) School Connectedness

Another season of PGHS's Dog Training program has recently come to an close for the school year. This year was just as successful as the previous years, providing 16 students (over the course of 2 6-week sessions) the opportunity to work with dogs from the Big Pine Animal Shelter under the guidance of Nancy Hardy, Bonefide Dog Trainer and our teacher Ms. Sabo. This class continues to be one of our students' favorite experiences in High School, learning basic dog training skills as well as gaining self-confidence and connections with their beloved canine friends. We look forward to continuing the program next year along with the support from Inyo County.



Fall Dog Training class (above)
and Spring Dog Training class
(below)



Life Science Class Visit to SNARL

Associated LCAP Goals: 2) Common Core

Historically, the typical age for a BUSD student to visit the Sierra Nevada Aquatic Research Lab (SNARL) in Mammoth is about 7-8 years old. We changed that this past week, setting up a day for our PGHS Life Science class (16-17 year olds) to do some hands on learning with streams and aquatic invertebrates. SNARL staff have been interested in expanding their (free!) field lessons to high schoolers and our small group was just the jump start needed to get the ball rolling. Students enjoyed observing, identifying, and collecting data on various aquatic invertebrate (insect) specimens and learned about local ecology and our fragile ecosystem. We look forward to continuing our relationship with SNARL for the coming years and perhaps seeing if we can fit into their Fall class schedule in Mammoth to learn about bears.





Photos above: Students learning and applying Life Science principles outside of the classroom thanks to SNARL.

Sex Ed at PGHS and KBS

Associated LCAP Goals: 3) Academic Growth

Karen Kong from ICSOS is back in our classrooms this Spring, providing sex ed classes to PGHS and KBS students. Among the topics are: HIV and other STD education/prevention, abstinence and contraception, consent, and responsible decision making.

PGHS Staff Appreciation

In honor of Teacher Appreciation Week, I asked our PGHS students to complete the following sentence about each of our PGHS staff members: “Ms. Blank is the best...”. [Here is a graphic](#) I created with their responses. I thought it was worthwhile to share this with you to show how truly lucky we are to have such great staff working with our at-risk youth, and how incredible the connections they make are with students.

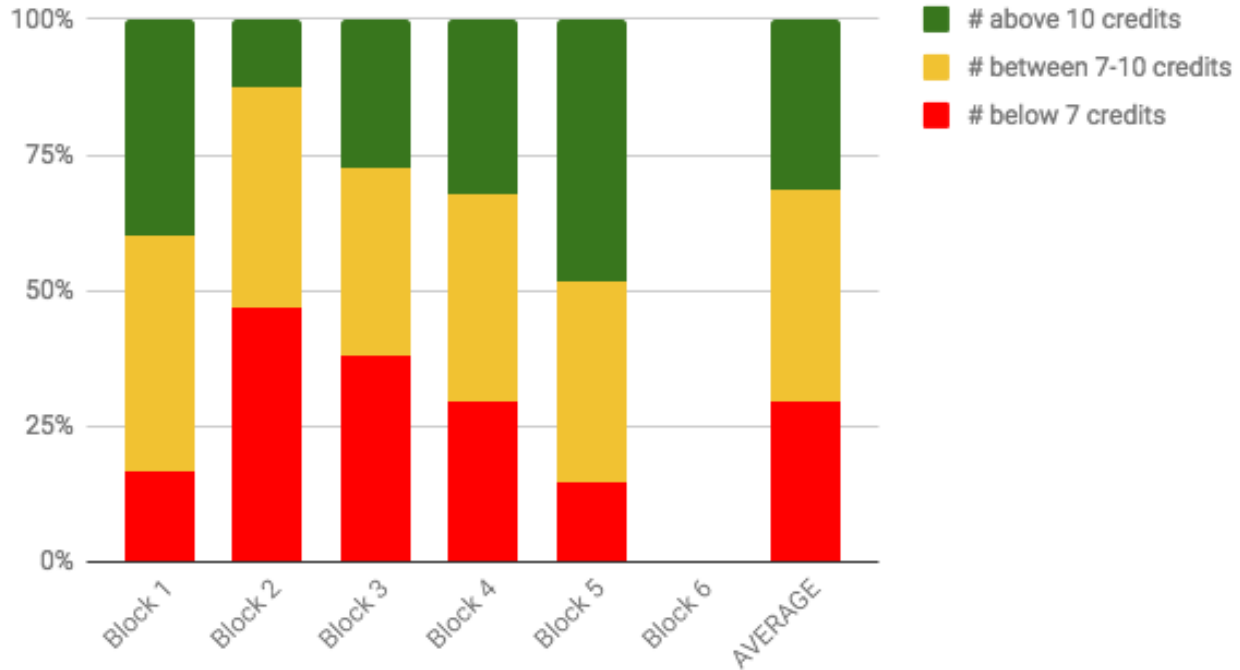
Credit Earning Rates (PGHS and BIS)

Associated LCAP Goals: 3) Academic Growth

The graphs below illustrate our student body’s credit earning rates so far this year at both PGHS and BIS. Pali students are steadily earning about 75% of the credits “available” to them each block, while BIS students are earning an average of 42%. This is consistent with our students’ overall credit earning progress last year, though due to our small numbers the data fluctuates greatly (especially at BIS) with a higher or lower than average earner in the mix. When we look at individual student data as a staff, we can identify trends, bright spots, and struggles with our students. We can also recognize that while a BIS student may take a year to complete a relatively small number of credits, the fact that they are still engaged and motivated to be in school in an effort to earn a diploma is valuable, and that our county has very limited alternative options that we can provide students. Without programs like ours, many of our students

wouldn't graduate. This year approximately 20% of the Class of 2018 will come from our alternative ed schools (PGHS and BIS).

'17-'18 PGHS Credit Earnings by Block



'17-'18 BIS Credit Earnings by Block

