

**Meekins Middle School  
2023-24 Ready for Learning Plan**

**Goal:**

To facilitate a return-to-school process that ensures the best possible educational experience for students, yet allows for the maximum amount of safety precautions as mandated by federal and state directives.

Please note that this document is a fluid document and continues to change as new directives come out from the Governor, Sarah Huckabee Sanders, the Department of Elementary & Secondary Education, Centers for Disease Control and the Arkansas Department of Health.

In the event of an infectious disease outbreak the following protocols will be implemented in this document.

**Resources:**

**[ADE Response Levels for On-Site Learning](#)**

**[Arkansas Ready for Learning Guide](#)**

**[CDC Considerations for Schools](#)**

**Teachers/Certified Staff:**

All teachers are to report to their classrooms no later than 7:40 a.m. each morning. All teachers must have their temperatures taken prior to entering the building. A thermometer will be located in the front office and by the library. Teachers will record their temperature each day on the documentation sheet.

**Classified Staff:**

All classified staff such as paraprofessionals and custodial staff should report to campus no later than their scheduled contract hours each morning. All classified staff must have their temperatures taken each morning in the office prior to going to their assigned post.

**Cafeteria Staff:**

All cafeteria staff should report to campus no later than their scheduled contract hours each morning. All cafeteria staff must have their temperatures taken and answer **health screening questions** each morning prior to entering the kitchen area.

**Table of Contents**

Schools should be prepared for COVID-19 outbreaks in their local communities and for individual exposure events to occur in their facilities. The Overall Level of Community Spread (active cases per population) as determined by the ADH will be an important factor in making response

determinations. The ADH COVID-19 Case Update lists the metrics for each county and the number of active cases. The level of virus transmission within the school will also be an important consideration when determining how to respond to school outbreaks.

The level of school spread will be determined by examining:

- Student and staff absentee levels and trends .
- Student and staff active cases (per school census)
- Evidence and severity of spread within the school community (active transmission within school setting vs unlinked cases)

Schools will consult with the ADH for guidance when determining the level of response.

**Learning On Campus (Blended Learning)**

Transportation	4
Arrival/Student Entry into Building	5
Student Dismissal	6
Visitors	7
Blended Instruction (Level One: 5 Days on Campus)	8
Online Instruction (Level Three: Campus Closure due to COVID)	9
Communication: Transition to Online	10
Instruction Flow Chart of Covid Communication	11
Attendance	12
Water Fountains/Face Masks	13
Transition/Bathroom	14
Recess	15
Breakfast/Lunch	16
Nursing Staff	17
Custodial Staff/Sanitation Plan	18
<b>Digital Academy (Virtual Instruction)</b>	<b>19</b>

**Transportation**

Students will arrive by bus, private transportation or walking. No student will be allowed on campus prior to 7:30 a.m.

What this will look like:	What this will accomplish:	Parent Resources:
<p>Parents will be expected to screen their children using current <b>screening guidelines</b> from the Arkansas Department of Health prior to entering any school bus or building.</p> <p><b>Bus Transportation:</b> Alternative modes of transportation are encouraged for students that have other options.</p> <p>Bus drivers will wear a face mask at all times on the bus. Disposable face masks will be provided to those students without a mask.</p> <p>It is recommended for all students to wear a face covering on the bus. Students will bring their own mask.</p> <p>All buses will have a hand-sanitizer located at the door of all bus for students to use before loading the bus in the morning and afternoon.</p> <p>Buses will drop off on the eastside of the building by the awning.</p> <p>Buses will not arrive before 7:30 a.m.</p> <p>If a bus should arrive before 7:30 a.m., the bus driver will be required to remain on the bus with the students until 7:30 a.m.</p> <p><b>Parent Drop Off Transportation:</b> Parents are not allowed to drop off students before 7:30 a.m. Beginning at 7:55a.m. parents will need to sign their child in at the office.</p>	<p>Due to buses being in a confined area and physical spacing is not feasible, the use of face masks will help to reduce the spread of germs.</p> <p>Ensure adequate student supervision.</p> <p>Prevent student congregations in hallways, playground, or cafeteria.</p> <p>Parents dropping off students through the established drop area will limit parent contact with other staff and students.</p>	<p><b>Screening required DAILY by parents:</b></p> <ol style="list-style-type: none"> <li>1. Students must have a temperature less than 100.4 degrees.</li> <li>2. Students must have a temperature less than 100.4 degrees consistently for the last 48 hours (without fever reducer).</li> <li>3. Students must have NO signs or symptoms of COVID-19.</li> <li>4. Students must NOT have had close contact with someone who has a confirmed diagnosis of COVID-19 in the last 14 days.</li> </ol> <p><a href="#">How to Safely Wear Face Coverings</a></p> <p><a href="#">Hand Sanitizer Use Out and About</a></p> <p><b>Add District Transportation Plan</b></p>

**Arrival/Student Entry into Building**

Students will enter the building immediately upon arrival at school. Students are to immediately go to their assigned class.

What this will look like:	What this will accomplish:	Parent Resources:
---------------------------	----------------------------	-------------------

<p>Arrival time for students is 7:30-7:55 a.m. After 7:55 a.m. parents will need to sign their child in the office.</p> <p>Student drop off will be near the awning on the eastside of the building</p> <p>Hand sanitizing stations will be placed at entrances for student and staff use.</p> <p>Students will walk into the building and go directly to their assigned class. Before students enter the classroom they will use hand sanitizer.</p> <p>Students who have fever/symptoms will sit in the hallway and the nurse will report to the student. The parent will be contacted.</p> <p>Doorstops will be used to prevent spreading germs.</p> <p>Floor markings will be installed to help with social distancing.</p>	<p>Ensure adequate supervision of students.</p> <p>Prevent students from gathering in the hallways, on the playground, or in the cafeteria. Prevent students from roaming the hallways.</p> <p>Decreases the chance of spreading the virus.</p> <p>Prevent exposure from symptomatic or asymptomatic students.</p>	<p><a href="#">Hand Sanitizer Use Out and About</a></p> <p><a href="#">Help Your Child Understand Social Distancing</a></p>
---	--	---

**Student Dismissal**

Students will exit the building following the social distancing procedures.

<p><b>What this will look like:</b></p>	<p><b>What this will accomplish:</b></p>	<p><b>Parent Resources:</b></p>
---	--	---------------------------------

<p>Students will walk to their dismissal area with adult supervision.</p> <p>Markings will be placed in the dismissal area to assist with social distancing.</p> <p>Bus riders will be called out of class as their bus arrives</p> <p>5th grade car riders will report to the front of the building</p> <p>6th grade car riders will report to the back of the building</p> <p>In the event of inclement weather students will remain inside. Students will sit in their designated spot until released by staff</p>	<p>Prevent students from gathering in the hallways, on the playground or in the cafeteria.</p> <p>Prevent students from roaming the halls.</p> <p>Lessen the chance of infection being spread</p>	
---	---	--

### Visitors

What this will look like:	What this will accomplish:	Staff Resources:
<p>Only visitors providing student services will be allowed at this time. Visitors will be required to enter through the main office and are encouraged to wear a mask. <b>Masks <u>will not</u> be provided to visitors.</b></p> <p>All visitors (providing student services) will be screened per ADH guidelines, including having temperature taken and answering the required questions.</p> <p>*These steps are <b>not</b> required IF checking out a student.</p> <p>*Visitors in the office must maintain a 6' distance from each other.</p> <p>Any visitor that fails the screening will not be allowed to enter the building and will be asked to leave the premises.</p> <p>Visitors are <b>not</b> allowed to eat lunch with their students at this time.</p> <p>We will hold virtual meetings/events/assemblies as much as possible.</p> <p>Signing Week will be July 27-31</p>	<p>Maintain the health and safety of our students.</p>	<p><a href="#">CDC Considerations for Schools</a></p> <p>If you need to meet with a parent, please notify the office of the meeting.</p>

**Blended Instruction (onsite Instruction 5 Days Per Week)**


**\*The first Wednesday of each month will be ALL VIRTUAL for all students in the district**

**This will allow teachers time to plan and prepare for blended learning**

**LEVEL ONE: LIMITED RESPONSE**

**Students will receive onsite instruction with as much social distancing as possible and feasible with the number of students present each day.**

**Students will use Google Classroom as a part of their daily routine (blended instruction)**

What this will look like:	What this will accomplish:	Parent Resources:
<p>All students will be at school 5 days per week for onsite instruction. Social distancing and masks will be encouraged throughout the day.</p> <p>All MMS students will be 1:1 with chromebooks. If there should be a school closure students will have a device that they can use at home so that instruction may continue. A computer user agreement and acceptable use contract will be signed if using a school computer.</p> <p>Students may use their own device and/or headphones. An acceptable use contract will be signed as well.</p> <p>Teachers will begin incorporating Google Classroom within the regular school day in order to prepare students for virtual learning.</p>		<p><a href="#">Home Access Center</a></p> <p>Many Chromebook issues are resolved by restarting the device. <b>Restart the chromebook</b></p> <ol style="list-style-type: none"> <li>1. Sign out of your account, the lower right bottom of the screen (the Shelf).</li> <li>2. Then look for the power symbol  along the bottom left of the shelf to shut down.</li> <li>3. Turn The chrome book back on -Hold down the power button on the keyboard.</li> </ol> <p><a href="#">Chromebook Help</a></p> <p><i>NOTE: Transitions may return to activity classrooms at a later time.</i></p>



**Online Instruction (ONLINE INSTRUCTION IF SCHOOL IS CLOSED DUE TO COVID-19)**

**LEVEL THREE: CRITICAL RESPONSE**

If remote instruction is required due to mandated closures, we will continue to use Google Classroom. This is NOT the same process as AMI.

Attendance will be taken, students will continue learning, and grades will be given.

Teachers will be available to Zoom and Google Meet.

<b>What this will look like:</b>	<b>What this will accomplish:</b>	<b>Parent Resources:</b>
<p>All instruction will be through Google classroom, which will be taught to students. Your child is considered to be present if work is completed as assigned by the teacher.</p> <p>Each student will be assigned a Chromebook. The computer usage agreement and acceptable use contract will be signed if using a school computer.</p> <p>Your child may use their own device and/or headphones. An acceptable use contract will be signed during registration.</p> <p>If the Internet is not available, there is an OFFLINE option using Google. There will be hotspots for students to download the content to work offline and then submit when online again. <a href="#">WiFi Access List</a></p> <p>Teachers will use platforms such as Remind, Google meet, Zoom and/or phone conferencing for virtual instruction. Students will be expected to wear appropriate attire during live virtual learning.</p>	<p>This will maximize student time being taught by certified teachers and receiving full-time instruction.</p> <p>Online work may be downloaded by students during on campus days for completion during the off campus day if there is a connection issue with Internet access.</p> <p>Students will be expected to learn new content in addition to reviewing material that has previously been learned. The school will carry on as a curriculum has been planned with her students are on campus or participating in online learning.</p>	<p><a href="#">Online Learning Tips for Parents</a></p> <p><a href="#">Tips for Keeping Your Child on a Schedule While Learning at Home</a></p> <p><a href="#">Chromebook Help</a></p> <p><b>Be sure to read page 13 for attendance policies during online learning.</b></p>

**Communication: Transition of Instruction Through Levels of Response**

What this will look like:	What this will accomplish:	Parent Resources:
<p><b>Parent to School:</b>                      If your student is sick, notify the MMS office by 8:30 AM at the number 870-673-3565. Student work for the day will be available on Google classroom.</p> <p>If your child has tested positive for COVID (student will be quarantined), keep your student at home until he/she is <b>released with a doctor's note</b>. This information will be sent to the school nurse. Daily work during quarantine will be available each day in google classroom.</p> <p>It is imperative that <b>parents</b> keep the school updated on all communication methods, including email, phone number, address, etc.</p> <p><b>School to Parent:</b>                      School Website- updates under "News"                      Local Radio Station 97.3                      Automated Calling System                      Social Media: Facebook/Twitter</p> <p><b>Tools for Communication:</b>                      Resources on the school website, Google Classroom, Google Voice, email, Ready for Learning Information, Remind, teacher contact information, COVID Resources, Essential Standards</p>	<p>Teachers will know which students are attending school online that day versus which students are absent.</p> <p>Nurses will need to maintain records on positive tests and return dates for those students. <i>This information will be kept confidential.</i></p> <p>Utilize a variety of methods to keep our community members informed about our Ready for Learning Plans.</p> <p>Use a variety of methods to let parents know about short-term or long-term pivots to virtual learning.</p>	<p><a href="#">District Facebook Page</a></p> <p><a href="#">Meekins Middle School Facebook Page</a></p> <p><a href="#">Country 97.3 Facebook Page</a></p> <p>Need to update your phone number on the Automated Calling System? Call 673-3565.</p> <p><b>**Check with your child's teacher to see what app is being used for class communication. Keep teachers informed about phone number or address changes.</b></p>

\*\*\*\*\*See Next Page for Flow Chart

# School Communication Flow Chart: COVID-19

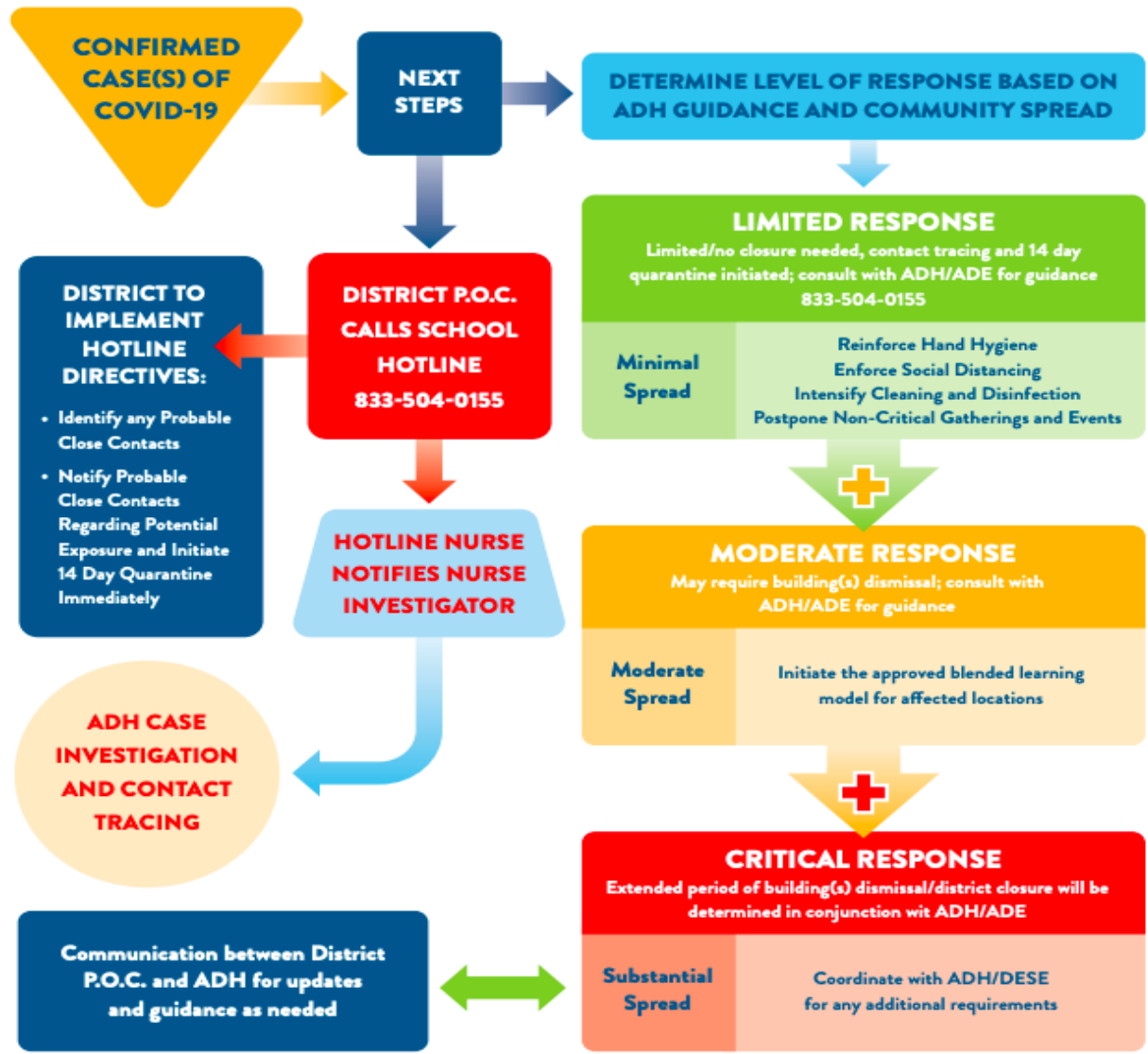



Diagram adapted using CDC guidelines and current pathways for the ADH/DESE School Hotline - School Communication Flow Chart: COVID-19


### Attendance

What this will look like:	What this will accomplish:	Parent Resources:
<p><b><u>Blended Learning On Campus</u></b>  <b>(Five days a week of in-person instruction)</b>  Attendance procedures will be the same as in previous years. See the handbook for policies/procedures.</p> <p><b><u>Online Learning</u></b>  <b>(Students are sick/quarantined or school has been temporarily closed)</b></p> <p>Attendance will be based on students completion of assignments as assigned by each teacher.</p> <p><b>Attendance may be tracked with:</b>  Completing online daily assignments, responding to teacher emails, following behavior expectations for online platforms, wearing acceptable attire, taking care/charge school-issued devices, and contacting the school office with technology issues.</p> <p>Attendance may be collected through the use of Zoom videos, completion of assignments, or other communication methods (email, phone call, or Google Classroom check-in).</p> <p>Then the technology issue will be directed to the technology department.</p>	<p>It is important to keep records of students' engagement with learning materials.</p> <p>Schools will be allowed flexibility with attendance. Attendance will be measured by the completion of assignments. If student(s) are not completing assignments then the online teacher will contact the parent. Students will be given a time limit to complete assignments.</p>	<p><a href="#"><u>What to Do If You Are Sick</u></a></p> <p>If your student is sick, notify the MMS office by 8:30 a.m. at 870-673-3565. Student work for that day will be available on Google Classroom.</p> <p>If your student has tested positive for COVID-19 (student will be quarantined), keep your student at home until he/she is released with a doctor's note. This information will be sent to the school nurse. Daily work during quarantine will be available in Google Classroom.</p> <p><b>**Parents need to keep the school updated on all communication methods, including email, phone number, address, etc.</b></p>



**Water Fountains**

<b>What this will look like:</b>	<b>What this will accomplish:</b>	<b>Parent Resources:</b>
<p>Water fountain spouts have been turned off.</p> <p>Two (4) water bottle filling stations are available for students and staff use. Students may bring CLEAR water bottles to use throughout the day and refill at the stations.</p>	<p>This will help reduce the spread of germs by not allowing anyone to place their mouth on the water fountain spout when getting a drink.</p>	<p><a href="#">Water Systems CDC Consideration for Schools</a></p> 

**Face Masks**

<b>What this will look like:</b>	<b>What this will accomplish:</b>	<b>Parent Resources:</b>
<p>Stuttgart School District requires everyone to wear a mask</p> <p><a href="#">Face Mask Information</a></p>	<p>Wearing face masks follows CDC guidelines and this will help reduce the spread of germs.</p> <p><a href="#">CDC Considerations for Wearing Face Cloth Coverings</a></p>	<p><a href="#">How to Safely Wear Face Coverings</a></p>  <p><a href="#">Prepare Your Child to Wear a Facemask</a></p>

**Transition/Bathroom**

<b>What this will look like:</b>	<b>What this will accomplish:</b>	<b>Parent Resources:</b>
<p>Markings will be placed on the floor to help students with social distancing while transitioning in the hallway.</p> <p>Students and staff will use hand sanitizer upon entering and exiting the classroom.</p> <p>Students will transition with their pods and the number of pods transitioning at one time will be limited to minimize the number of students in the hallway.</p> <p>Doorstops we use during transitions to prevent multiple people from touching the handles.</p> <p>Teachers will schedule restroom breaks to avoid congregating.</p>	<p>This will limit the number of students during dismissal and allow for efficient social distancing.</p> <p>Staff members will monitor that students are sanitizing their hands properly.</p>	<p><a href="#">Maintaining Healthy Environments</a></p> <p><a href="#">Practice Hand Washing With Your Child</a></p> <p><a href="#">What My Child Needs to Know About Using Hand Sanitizer</a></p>  <p><b>Stop the spread of germs that can make you and others sick!</b></p>  <p><small>© CDC</small> <a href="https://www.cdc.gov/coronavirus">cdc.gov/coronavirus</a></p>

### Recess

What this will look like:	What this will accomplish:	Parent Resources:
<p>Social distancing will be observed as much as feasibly possible.</p> <p>Masks will be encouraged if social distancing is not possible.</p> <p>Playground equipment will not be used.</p> <p>PE coach will provide exercises for students to keep them busy and promote social distancing</p> <p>For inclement weather recess will be held in the two gyms and some classrooms.</p>	<p>This will limit the number of students on the playground at one time and allow for effective social distancing.</p> <p>This will limit the number of students on the playground at a time</p> <p>Recess guidelines may change as the year progresses</p>	<p><a href="#">Maintaining Healthy Environments</a></p>

**Breakfast**

Breakfast will be served in the classroom.

<b>What this will look like:</b>	<b>What this will accomplish:</b>	<b>Parent Resources:</b>
<p>The cafeteria staff will distribute breakfast to students as they enter the building.</p> <p>Students will walk into the building and go directly to their assigned class. Before students enter the classroom they will use hand sanitizer.</p> <p>Teachers will use procedures to ensure social distancing while dispersing and taking up breakfast.</p> <p>Breakfast trash will be immediately removed from the classroom once all students finish eating.</p>	<p>This will keep students from gathering in the cafeteria. (This is not a new practice for our building, we have done it in years past.)</p>	

**Lunch**

Lunch will be served in the cafeteria, attached classrooms and stage.

<b>What this will look like:</b>	<b>What this will accomplish:</b>	<b>Parent Resources:</b>
<p>Students will eat lunch in the cafeteria</p> <p>Staff will scan students and administer milk while students begin to eat</p> <p>Students may bring their own lunch to school. Parents may drop off lunch, but students will need to know to pick it up in the office. The office is not responsible for delivering lunches or notifying students as stated in the handbook.</p>	<p>Social Distancing and following ADH Guidelines</p> <p>Maximize the amount of time students get to eat.</p> <p>Minimize what students can touch</p>	



## Nurse

What this will look like:	What this will accomplish:	Parent Resources:
<p>If your student is sick, notify the office by 8:30 AM at the number 673-3565. Student work for the day will be available on Google classroom.</p> <p>The nurses office will have an isolation room for students who are displaying symptoms of COVID-19 and a separate room for students who are coming for medicine or other needs.</p> <p>Students who are sick and being sent home will remain in the isolation room across from the nurses office.</p> <p>A district liaison will be assigned for all information concerning COVID-19 as well as communication with the CDC (Centers for Disease Control) and Department of Health.</p> <p>If a student is sick the teacher will call the office. The nurse will report to the hallway and screen the student</p>	<p>This will minimize those who are exposed to students who are ill.</p>	<p><a href="#">Coronavirus Information for Parents</a></p> <p><a href="#">What to Do if You Are Sick\</a></p> <p><a href="#">CDC Checklist for Parents</a></p> <p><a href="#">Symptoms of Coronavirus</a></p> <p><a href="#">ADE Response Levels for On-Site Learning</a></p> <p>Families are encouraged to practice these lessons at home for reinforcement:</p> <ul style="list-style-type: none"> <li>● <a href="#">The Right Way to Cover Your Cough</a></li> <li>● <a href="#">Cover Your Mouth and Nose Video</a></li> <li>● <a href="#">How to Wear Your Mask Properly</a></li> <li>● <a href="#">Proper Hand washing Videos</a></li> </ul>

**Custodial Staff:**

What this will look like:	What this will accomplish:	Parent Resources:
<p>Custodial staff will need to take trash to dumpsters immediately after breakfast and lunch.</p> <p>Custodial staff will be trained to thoroughly sanitize classrooms, restrooms, hallways and classrooms.</p> <p>Custodial staff will frequently disinfect frequently touched areas such as light switches, faucet levers, paper towel dispensers and flush levers.</p> <p>Custodial staff will walk through classrooms after students have left for the day and spray sanitizer on desks and chairs.</p> <p>Electrostatic fogging machines have been purchased and will be used throughout the day and after school.</p> <p>Teachers will be asked to disinfect with spray between student rotations to classes, along with disinfecting door knobs and light switches.</p> <p>Teachers will be incorporating lessons on handwashing and social distancing in all classrooms</p>	<p>This will keep food from sitting in classrooms or hallways causing smells or drawing pests.</p> <p>This will help to eliminate the spread of germs among groups.</p>	<p>Families are encouraged to help with disinfecting by using proper disinfecting methods while at home.</p> <ul style="list-style-type: none"> <li>● <a href="#">How to Properly Wash Masks</a></li> <li>● <a href="#">Disinfecting At Home</a></li> <li>● <a href="#">Top Five Things to Disinfect Daily</a></li> </ul>

**Instruction: (Stuttgart Digital Academy- All Online Instruction for those NOT Wishing to Send Students Back in the Fall)**

Minimum Commitment: Nine Weeks

Students will receive all online instruction through the Edgenuity Learning Management System.

**STUTT GART DIGITAL ACADEMY.**

**USE THIS LINK TO SEE THE CHART BELOW COMPARING VIRTUAL LEARNING AND ONSITE LEARNING.**

<b>Blended Learning Onsite</b>	<b>Stuttgart Virtual Academy</b>
<p><b>Curriculum</b> State Standards/Essential Standards taught as normal with course offerings remaining the same.</p>	<p><b>Curriculum:</b> State standards taught in an order recommended by our staff to align as much as possible with onsite instruction.</p>
<p><b>Instruction</b></p> <ul style="list-style-type: none"> <li>• Face to face with teachers (live streaming may be required to separate students for social distancing)</li> <li>• Some teachers may record lessons for students to watch in the classroom and/or on Google Classroom.</li> <li>• Instruction will be blended throughout the week. For example, teachers will post assignments, quizzes, videos, resources, and/or activities in Google Classroom for students to access while in the classroom. This will prepare students for online learning should the school have to close or a child has to be quarantined.</li> <li>• PAE/MMS: Activity teachers (art, P.E., music, library, etc.) will rotate to the classrooms.</li> <li>• In some schools, teachers and paraprofessionals may rotate between rooms for social distancing. Teachers will provide the instructional content to students.</li> <li>• Many of our classrooms will not allow for 6 feet social distancing; however, we will distance as much as possible and require masks for all staff and students.</li> <li>• Grades/tests will be taken and recorded on a regular basis.</li> <li>• Meals will be served in the cafeterias or classrooms depending on space for social distancing.</li> <li>• Each principal will provide a building plan with information regarding the safety and learning in the schools.</li> <li>• Each building plan will include more details on safety precautions that will be taken while providing services to students with special needs.</li> </ul>	<p><b>Instruction</b></p> <ul style="list-style-type: none"> <li>• Online learning</li> <li>• Platforms for learning: K-8: Edgenuity 9-12: Virtual Arkansas</li> </ul> <p><b>Edgenuity</b> K-5 video introduction <a href="https://www.edgenuity.com/video-library/?vid=6073377315001">https://www.edgenuity.com/video-library/?vid=6073377315001</a></p> <p>6-8 video introduction <a href="https://www.edgenuity.com/video-library/?vid=3049988246001">https://www.edgenuity.com/video-library/?vid=3049988246001</a></p> <p><b>Virtual Arkansas</b> <a href="https://virtualarkansas.org/200690_2">https://virtualarkansas.org/200690_2</a></p> <ul style="list-style-type: none"> <li>• Edgenuity lessons are available online 24/7; parent/guardian can decide schedule for student.</li> <li>• Edgenuity has text translation for all students.</li> <li>• A parent/guardian must be available to assist the student in accessing the lessons for K-5.</li> <li>• The District will purchase the workbooks for K-5.</li> <li>• Online teachers will be provided. The number of virtual students may influence whether our district teachers or the teachers Edgenuity or Virtual Arkansas are used.</li> <li>• The district will provide a staff member to serve as the virtual coordinator to help support families and students with the Virtual Academy.</li> <li>• Virtual students will be provided with a device if needed.</li> <li>• Grades will be taken on a regular basis, considering accuracy, deadlines, etc.</li> <li>• Tests are taken online.</li> </ul>
<p><b>Interventions/Special Services</b></p> <ul style="list-style-type: none"> <li>• Interventions will be provided per normal procedures; however, locations may be changed due to social distancing requirements.</li> <li>• Dyslexia: students will receive regular support.</li> <li>• 504/IEP: plans will be used as normal, including online learning.</li> <li>• All SpEd services will be provided.</li> </ul>	<p><b>Interventions/Special Services</b></p> <ul style="list-style-type: none"> <li>• Many interventions will occur virtually.</li> <li>• Our district Special Education Director will work with parents and teachers to make sure students receive the support needed for success.</li> <li>• Virtual Academy platforms will allow for some accommodations for students as needed in their individual education plans.</li> </ul>
<p><b>Supplies/Equipment</b></p> <ul style="list-style-type: none"> <li>• Each student will be issued a device to use at school and at home when needed. This will include a charger. Students will be expected to turn in a technology contract, keep device clean, and take care of the device.</li> <li>• Each child will keep his/her own supplies to use each day. Supplies may NOT be shared between students. There will be no class boxes of materials for students to share.</li> <li>• Each family is being asked to provide their child with the provided supply list from the building.</li> </ul>	<p><b>Supplies/Equipment</b></p> <ul style="list-style-type: none"> <li>• Each student will be given a device to use if needed. This will include a charger. Students will be expected to keep that device clean and take care of the device.</li> <li>• Families must commit to supporting their children with Virtual Academy instruction. Checking to ensure work is done on time, setting up support if needed, and/or corresponding with the virtual coordinator in the building for assistance.</li> <li>• The district will not provide individualized Wi-Fi.</li> <li>• Some labs may require additional supplies (most of which may be available in the home.)</li> </ul>

**UPDATED APRIL 3, 2023**

Safety measures outlined in the Ready for Learning plan will continue to be in effect throughout the duration of the school year. In addition, we will be following End-of-Year COVID-19 Guidance.

This guidance document addresses updates to the public health directives and is based on the public health situation with COVID-19 as it is understood today. Updated guidelines continue to focus on successful practices that resulted in onsite learning for students and limited disruptions throughout the year. Therefore, continued practices to mitigate the likelihood of COVID-19 spread inside the schools will be followed.

Mask/Face Coverings Mask wearing continues to be a very important and effective way to prevent the spread of the virus. When masks are worn, individuals and others are protected and masks work best when everyone is wearing one. Therefore, the Stuttgart School District will continue to require the use of masks for adults and students.

- Maintain 6 ft Between adults or adults and students when masks cannot be worn, during activities with increase exhalation and in common areas such as lobbies and auditoriums

Physical Distancing CDC now recommends that, with universal masking, students should maintain a distance of at least 3 feet in classroom settings. The CDC still recommends social distancing of 6 feet between adults, as well as adults and students, in common areas, when masks can't be worn (such as while eating), during activities with increased inhalation like sports or band practice and in community settings outside the classroom.

The Stuttgart School District will accept public comments on these changes to be taken into consideration. To submit any public comments concerning the Ready for Learning Plan please use the email address below.

**An email address has been created to be used for receiving public comments.**  
**[plancomment@stuttgartschools.org](mailto:plancomment@stuttgartschools.org)**