



# NORTHEAST BRADFORD SCHOOL DISTRICT

---

## CAPITAL PROJECT PRESENTATION

September 21, 2021

*HUNT* ENGINEERS | ARCHITECTS | SURVEYORS

# AGENDA

---

- Highlights of Project
- Conceptual Plans and Space Planning
- Timeline, Phasing & Schedule
- Overall Project Costs and Financing
- Feedback and Questions

# Elementary School – Key Site

---

- General Site Items
  - Asphalt Parking Lot/Drive Upgrades
  - Playground Upgrades
  - Concrete Sidewalk replacement
  - ADA Parking Improvements



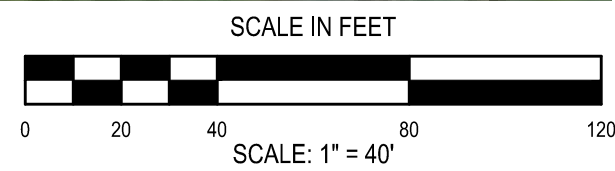


\\13145-006\\\_DMS\\3149-006 - ELM VDP - 1.0 ELM SITE IMPROVEMENTS - Capitaland, 9/7/2021 4:22:31 PM, saved



1 SITE IMPROVEMENTS

SCALE: 1" = 10'



SITE IMPROVEMENTS EXHIBIT

NORTHEAST BRADFORD ELEMENTARY SCHOOL  
NORTHEAST BRADFORD SCHOOL DISTRICT

526 PANTHER LANE, ROME, PENNSYLVANIA 18837

1.0

PROJECT NO: 3149-006

**HUNT** ENGINEERS | ARCHITECTS | SURVEYORS

HORSEHEADS, NY 807 - 368 - 1000 ROCHESTER, NY 585 - 327 - 7950  
TOWANDA, PA 570 - 265 - 4868

DRAWN BY:  
CHECKED BY:  
DATE: SEPT., 2021  
SCALE:

#	DATE	DESCRIPTION OF REVISION	BY

ARCHITECTS OR SURVEYORS SEAL / ALTERATIONS OR ADDITIONS  
TO PLANS BEARING A LICENSED ENGINEER'S IT IS A VIOLATION OF  
THE LAW FOR ANY PERSON TO MAKE UNAUTHORIZED

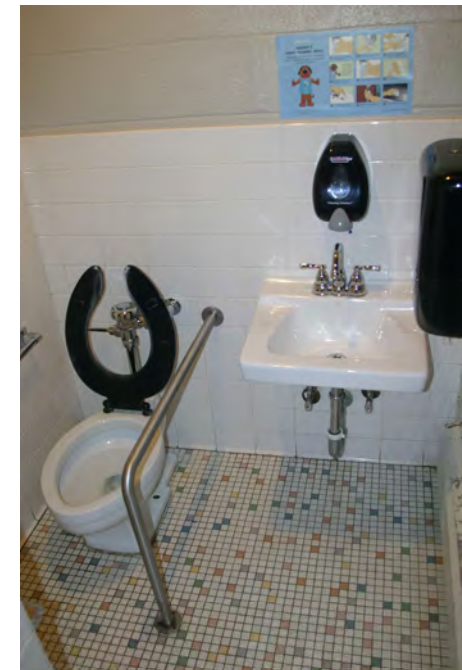
Copyright: 2021

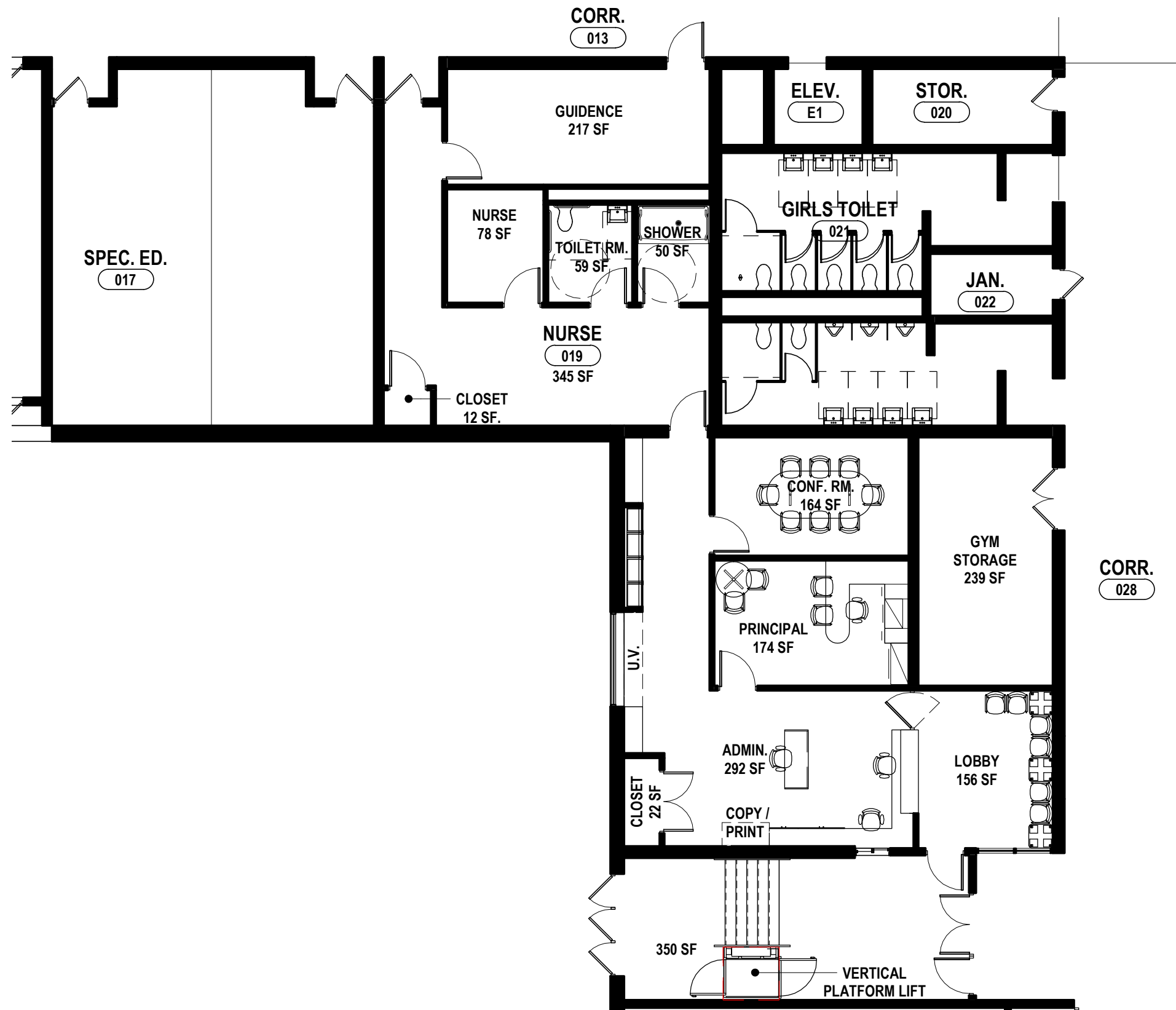


# Elementary School – Key Architectural

---

- Health & Safety
  - Secured Entrance
  - Corridor Doors- Ratings & Security
- ADA
  - ADA Toilet Room Upgrades
  - Accessible Drinking Fountains
  - Nurse Suite Accessibility





1 OFFICE LAYOUT - D  
1" = 10'-0"



# CAPITAL PROJECT - PHASE 1 ELEMENTARY SCHOOL NORTHEAST BRADFORD SD



1 OFFICE LAYOUT - E  
1/8" = 1'-0"

# CAPITAL PROJECT - PHASE 1 ELEMENTARY SCHOOL NORTHEAST BRADFORD SD



# Secure Entrance Examples

---





# Secure Entrance Examples

---



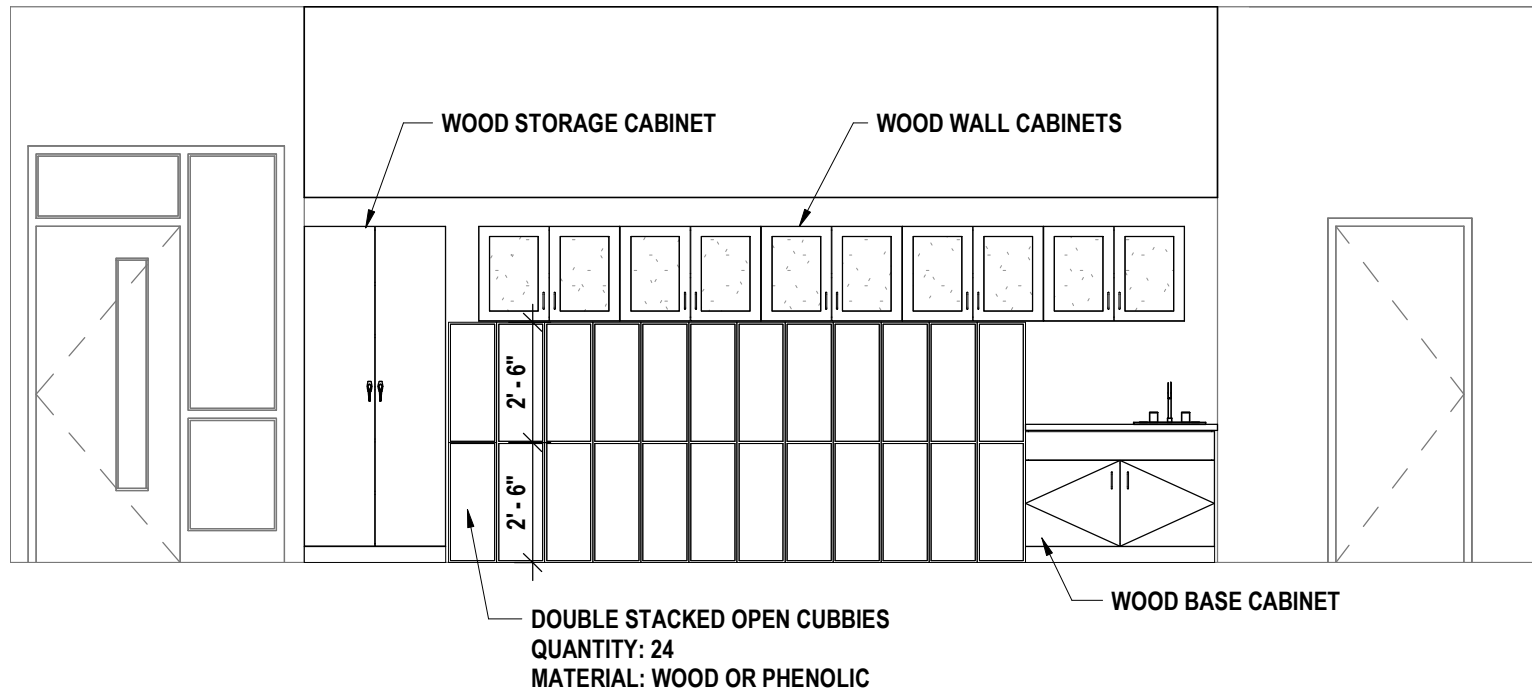
# Elementary School – Key Architectural

---

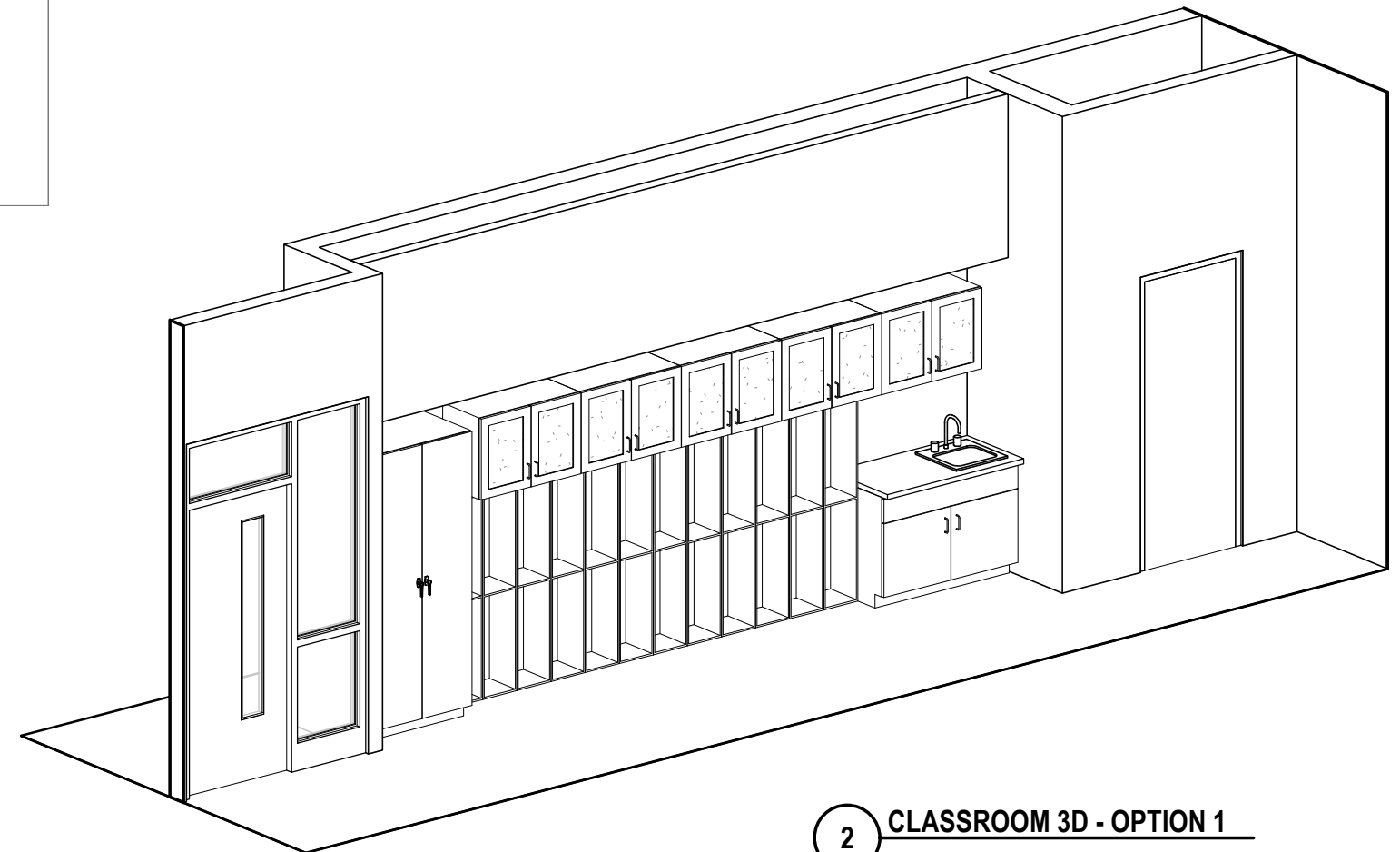
- General Items
  - Finish/Casework Replacement (Art Room & Classrooms)
  - Toilet Room Renovations







1 **CLASSROOM ELEVATION - OPTION 1 - CASEWORK**  
 1/4" = 1'-0"

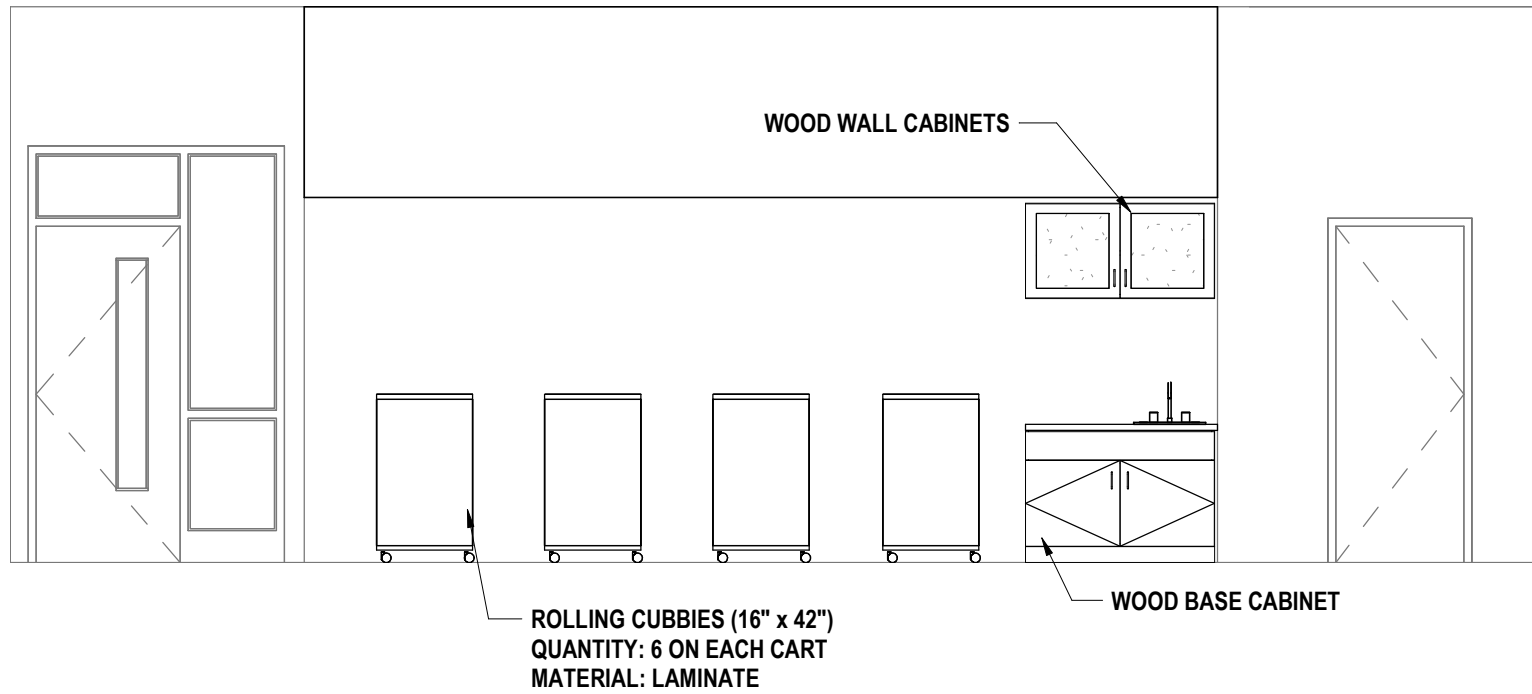


2 **CLASSROOM 3D - OPTION 1**

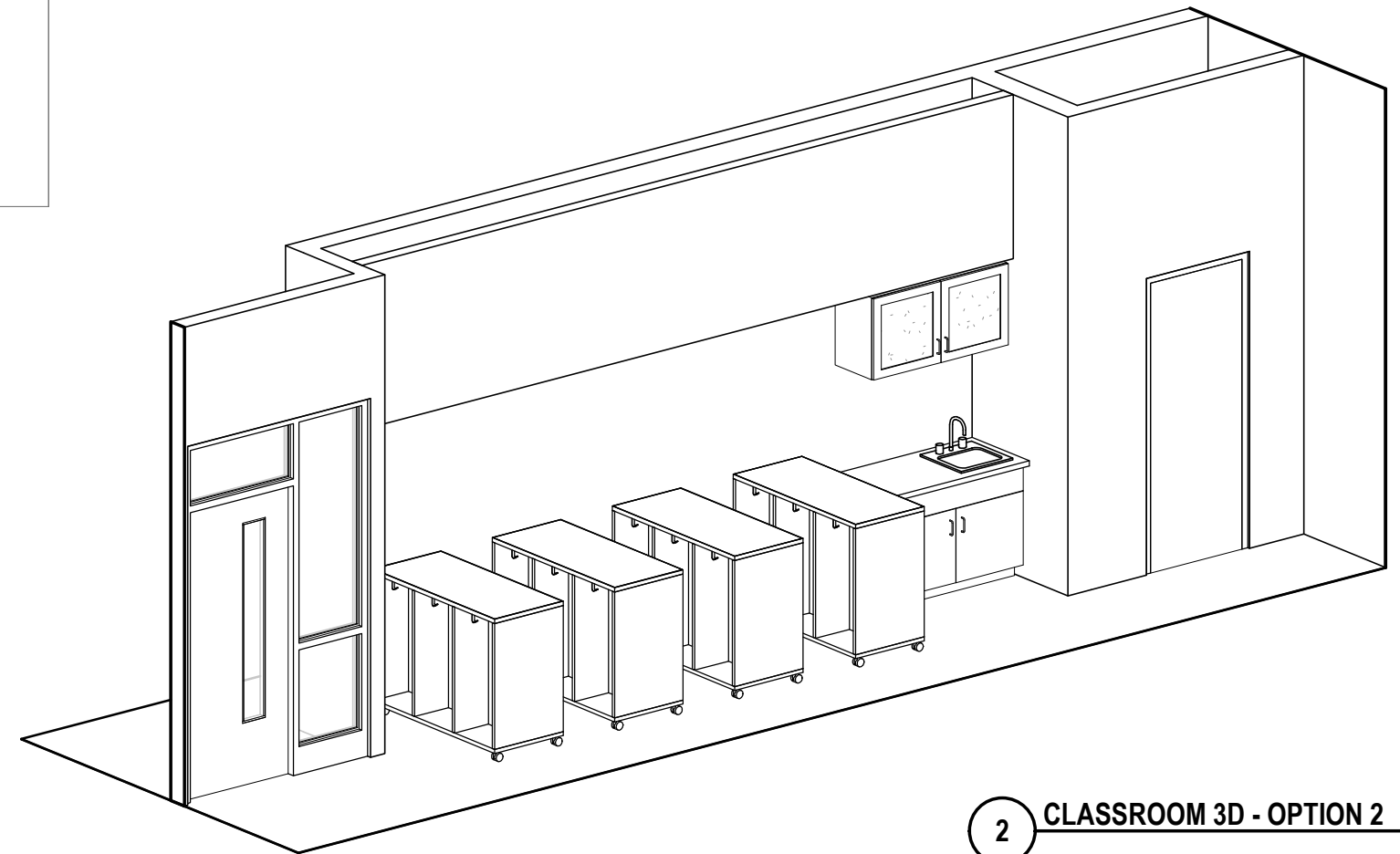


# CAPITAL PROJECT - PHASE 1 ELEMENTARY SCHOOL NORTHEAST BRADFORD SD





1 CLASSROOM ELEVATION - OPTION 2 - FURNITURE  
1/4" = 1'-0"



2 CLASSROOM 3D - OPTION 2

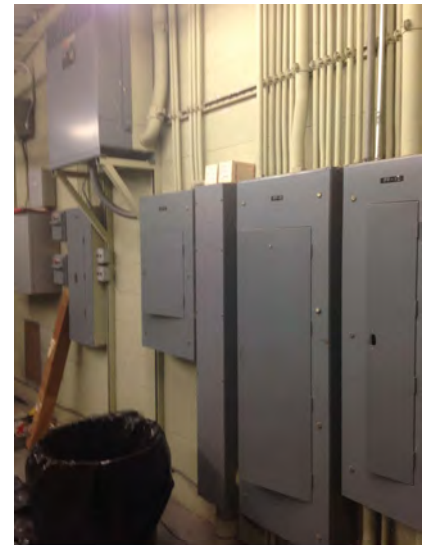


# CAPITAL PROJECT - PHASE 1 ELEMENTARY SCHOOL NORTHEAST BRADFORD SD

# Elementary School – Key M/E/P & Tech

---

- Health & Safety
  - Ventilation in Occupied Spaces
  - Exit/Emergency Lighting
- General Items
  - Piping & Valve Replacements
  - Electrical Replacement & Upgrades
  - Plumbing Upgrades, including Locker Rms
  - Data Area & Cabling Improvements
  - Security & Access Control Upgrades
  - Generator







$1/4'' = 1'-0''$



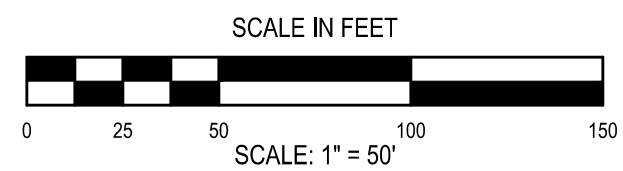
# High School – Key Site

---

- General Site Items
  - Asphalt Parking Lot/Drive Upgrades
  - Concrete Sidewalk replacement
  - ADA Parking Improvements







#	DATE	DESCRIPTION OF REVISION	BY

DRAWN BY:

CHECKED BY:

DATE: SEPT., 2021

SCALE:

IT IS A VIOLATION OF THE LAW FOR ANY PERSON TO MAKE UNAUTHORIZED ALTERATIONS OR ADDITIONS TO PLANS BEARING A LICENSED ENGINEER'S, ARCHITECT'S OR SURVEYOR'S SEAL.

Copyright: 2021



# High School – Key Architectural

---

- Health & Safety
  - Corridor Doors – Ratings & Security
  - Gymnasium Doors
  - Gymnasium Folding Partition
- ADA
  - Toilet Room Upgrades
  - Accessible Drinking Fountains
  - Nurse Suite
  - Accessibility:
    - Locker Room
    - Life Skills Room





# High School – Key Architectural

- General Items
  - Finish/Casework Replacement
  - Locker Room Renovations
  - Toilet Room Renovations
  - Exterior Restoration



# High School – Key Architectural

---

- General Items
  - Gymnasium Upgrades/Flooring
  - STEM in Library
  - Cafeteria/Kitchen





# Science Project Examples

---





# Science Project Examples

---



# Science Project Examples





# Gym/Locker Rm Examples

---





# Gym/Locker Rm Examples

---





# STEM Project Examples

---





# STEM Project Examples

---





# Cafeteria & Kitchen Design

---



# Cafeteria & Kitchen Design

---





# Cafeteria & Kitchen Design

---





# Cafeteria & Kitchen Design

---



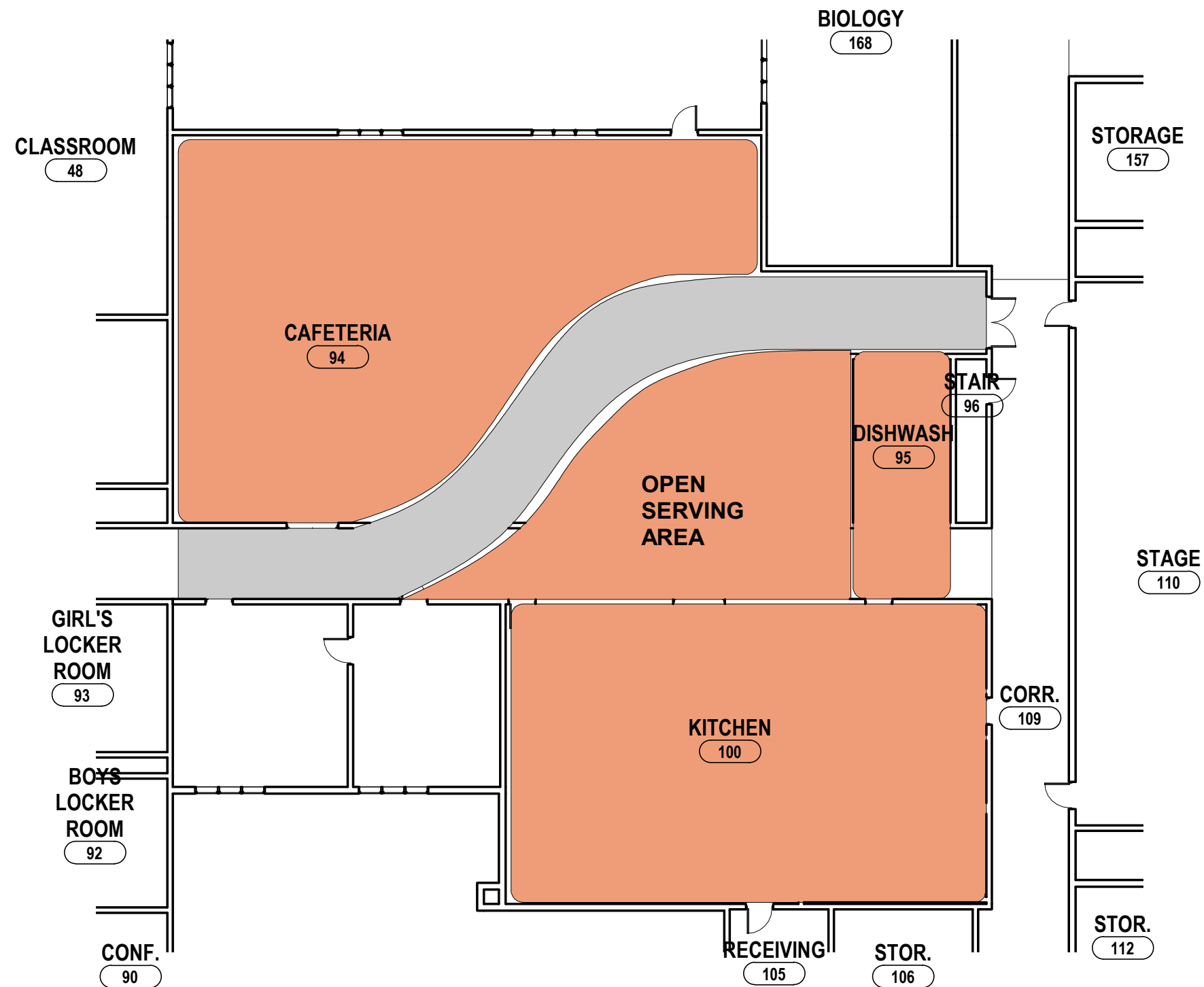


# High School – Key M/E/P and Technology

---

- Health & Safety
  - Ventilation in Occupied Spaces
  - Exit/Emergency Lighting
- General Items
  - Piping and Valve Replacements
  - HVAC/Elec. in Shop Area
  - Electrical Replacement & Upgrades
  - Plumbing Infrastructure Upgrades
  - Data Area & Cabling Improvements
  - Security & Access Control Upgrades





1 FIRST FLOOR PLAN - KITCHEN CONCEPT  
1/16" = 1'-0"



# CLASSROOM RENOVATION NORTHEAST BRADFORD SD





# JR. / SR. HIGH SCHOOL

## NORTHEAST BRADFORD ASD



### GENERAL ARCHITECTURAL BUILDING SCOPE:

- REPLACE INTERIOR CLASSROOM CORRIDOR DOORS THAT ARE NOT FIRE RATED.
- FIRE RATE PENETRATIONS THROUGH CORRIDOR WALLS.

### GENERAL MECHANICAL BUILDING SCOPE:

- UPDATE DRINKING FOUNTAINS
- BUILDING WIDE VALVE REPLACEMENT
- REPLACE DETERIORATED PLUMBING FIXTURES AND PIPING

### GENERAL ELECTRICAL BUILDING SCOPE:

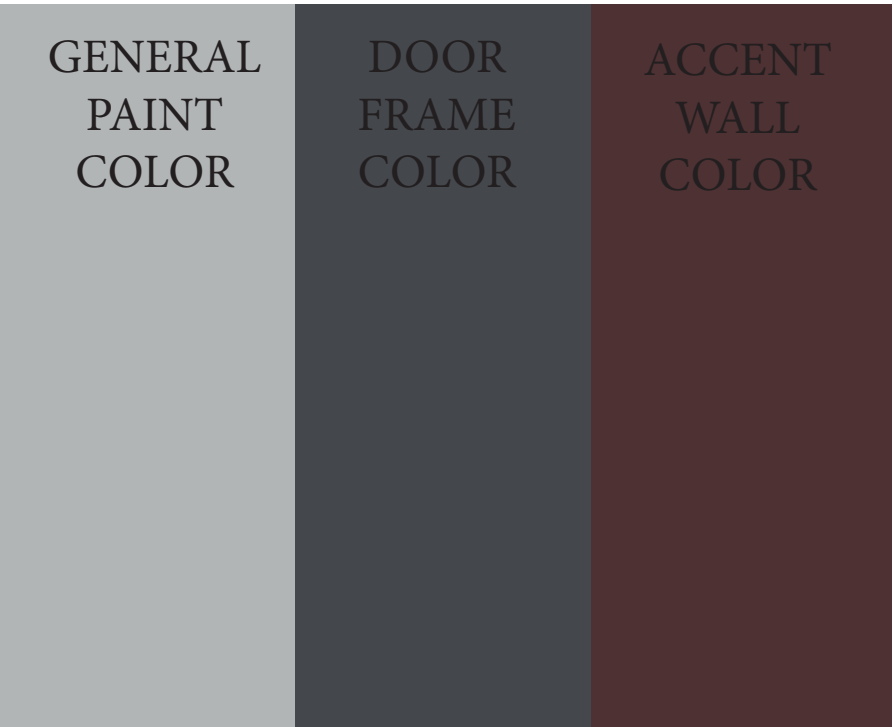
- ARC FLASH LABELING
- FIRE ALARM SYSTEM WIRING
- PROVIDE NEW EXIT LIGHTING AND INTERIOR/EXTERIOR EMERGENCY LIGHTING
- PROVIDE ADDITIONAL AND REPLACE ELECTRICAL POWER DISTRIBUTION PANELS
- PROVIDE OCCUPANCY SENSORS
- REPLACE MAIN ELECTRIC SERVICE AND ENCLOSURE
- REPLACE OUTDATED WIRING

### GENERAL TECHNOLOGY BUILDING SCOPE:

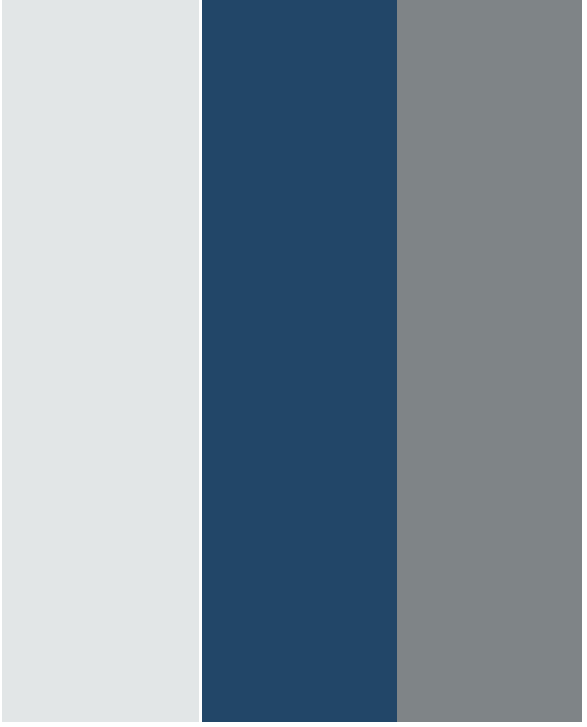
- PROVIDE CARD READERS AT CLASSROOM LOCKSETS
- PROVIDE ACCESS CONTROL TO ENTRY DOORS
- PROVIDE SURVEILLANCE UPGRADES
- DATA CLOSET IMPROVEMENTS
- PROVIDE ADDITIONAL CABLEING INFRASTRUCTURE
- PROVIDE CAT6 TO WIRELESS ACCESS POINTS

- SCOPE LEGEND**  
1/4" = 1'-0"
- EXISTING
  - ARCH:
    - UPDATE MAIN FACADE AND DOORS TO LOBBY
    - PORTION OF LIBRARY TO BE RECONFIGURED INTO STEM SPACE. ALL SYSTEMS.
    - CAFETERIA/KITCHEN RENOVATIONS: ALL SYSTEMS TO BE RECONFIGURED TO PROVIDE OPEN CONCEPT & OPEN SERVING AREA
    - PROVIDE/UPGRADE CASEWORK IN GENERAL CLASSROOMS
  - ARCH/MEP-T:
    - NURSE SUITE UPGRADES: ADA, TOILET ROOM, FINISHES, PLUMBING
    - LIFE SKILLS: ADA UPGRADES
    - SCIENCE ROOM & STORAGE AREA RENOVATIONS. UPGRADE ALL SYSTEMS.
    - GYMNASIUM RENOVATIONS: REPLACE DOORS, REPLACE PARTITION WITH DIVIDER CURTAIN, REPLACE GYM FLOORING SYSTEM, OCCUPANCY SENSORS FOR LIGHTING
    - TOILET ROOM UPGRADES: FINISHES, FIXTURES, PLUMBING WATER/SANITARY LINES
    - LOCKER ROOM RENOVATIONS: ALL AREAS, SHOWERS, TOILET ROOMS, FINISHES, AND PLUMBING.
  - MEP-T:
    - SHOP RENOVATIONS: ELECTRICAL IMPROVEMENTS (LIGHT SWITCHING & WIRE GUARDS), REPLACE BUSS DUCT, ADD DUCT SPRINKLER, REPLACE PVC DUST COLLECTION DUCTWORK
    - IT CLOSET IMPROVEMENTS
  - HVAC:
    - PROVIDE EXHAUST TO ART ROOM
  - DISTRICT IMPROVEMENTS

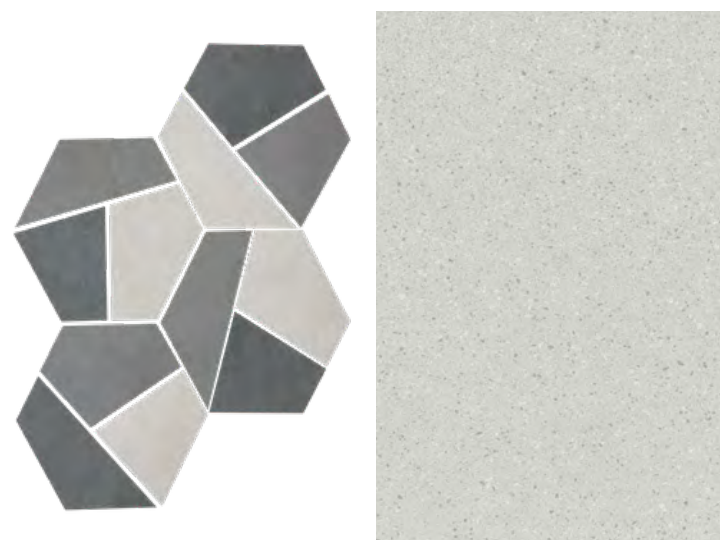




SCHOOL COLOR PALLETE



ACCENT COLORS



TOILET ROOM FLOOR TILE



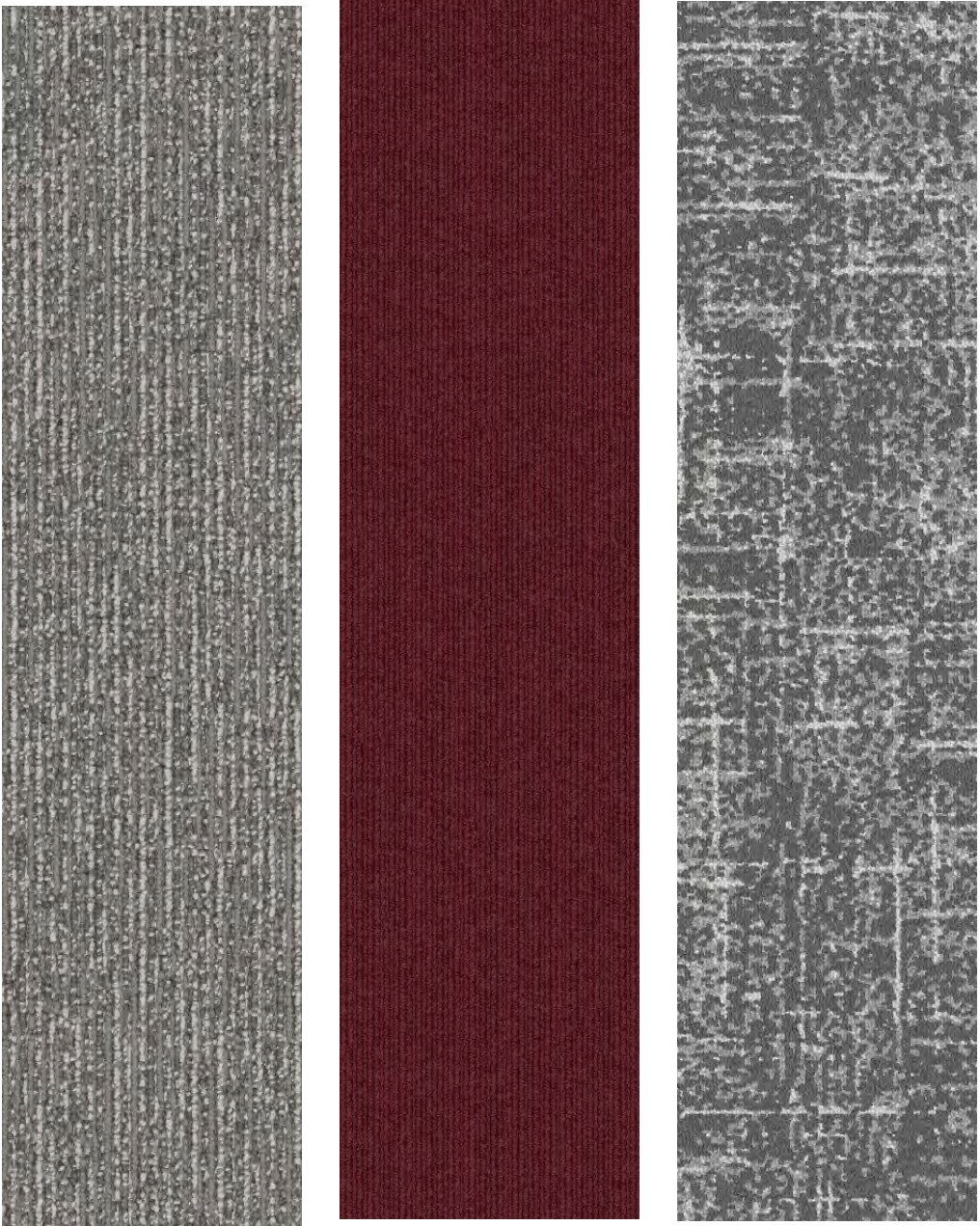
TOILET ROOM WALL TILE



LVT FLOORING INSPIRATION PHOTO



LVT FLOORING



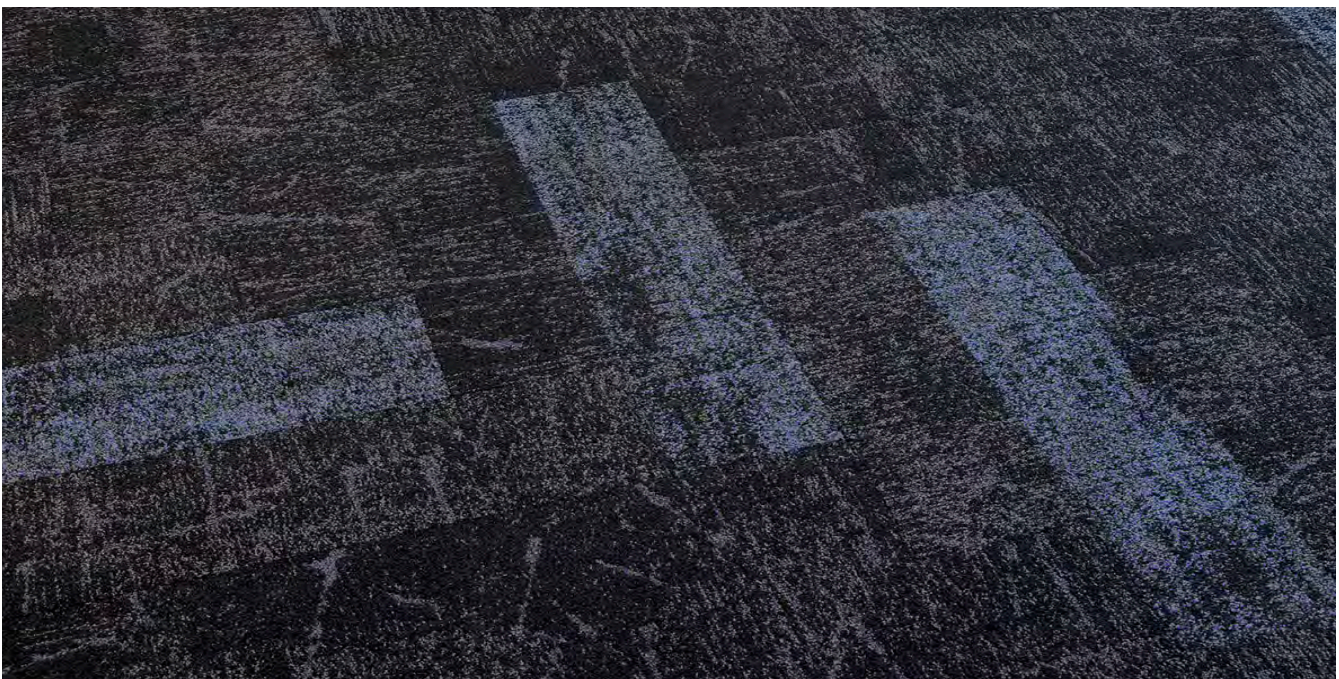
CARPET FLOORING



WALL BASE



CASEWORK FINISH



CARPET FLOORING INSPIRATION PHOTO



NORTH EAST BRADFORD  
CLASSROOMS/ADMIN/FACULTY





# Timeline and Phasing

---

## Phase I (Elementary School)

- Design Phase: **July 2021 – January 2022**
- Bid/Award: **February/March 2022**
- Construction: **March 2022 – August 2022**
- Contractor Closeout: **October 2022**

## Phase II (High School)

- Design Phase: **October 2021 – August 2022**
- Bid/Award: **September/October 2021**
- Construction : **January 2023 – August 2023**
- Contractor Closeout: **October 2023**

# Project Costs & Financing

---

## Phase I (Elementary School)

- Construction Costs \$3,763,284
- Incidental/Soft Costs \$752,656
- Total Project Cost \$4,515,940

## Phase II (High School)

- Construction Costs \$4,953,650
- Incidental/Soft Costs \$990,730
- Total Project Cost \$5,944,380

## Overall Project Cost and Finance Amount \$10,460,320

- No tax impact.
- Rates are still low, and NEB SD is exploring the best options for financing.
- Current bond will be paid off June 2027.



# Questions?

---