



**Evans and Meister
Return to Learn Plans
2021/2022**

**Presented by:
J. Eric Worthington
&
Dawn Swanson**



UPDATES TO THE PROTECT RF STUDENTS PLAN

LEA Return to In-Person Instruction Plans

- Universal and correct wearing of masks.p 4, 5, 12
- Modifying facilities to allow for physical distancing. P 13, P 17-21
- Handwashing and respiratory etiquette. P 13, 14
- Cleaning and maintaining healthy facilities, including improving ventilation. 17-21
- Contact tracing in combination with isolation and quarantine, in collaboration with the state, local, territorial, or tribal health departments. P 15-16
- Diagnostic and screening testing. P 12, 15-17
- Efforts to provide vaccinations to school communities. P 15 - 17
- Appropriate accommodations for children with disabilities with respect to health and safety policies. p 10, P 22
- Coordination with state and local health officials. P 8, sports/extra curric P 26-27 collaborations P 29



Protect RF
Students Plan

ACCELERATED LEARNING



Accelerated learning is not about a method that produces quick results or that would show high degrees of student achievement given the same amount of time and resources. If there was a magic method that could accomplish that, all schools would have been using it before the Pandemic.

Accelerated learning is what we can do/offer in addition to our daily, high quality instruction that provides supplemental learning and exposure to the curriculum.



ACADEMICS

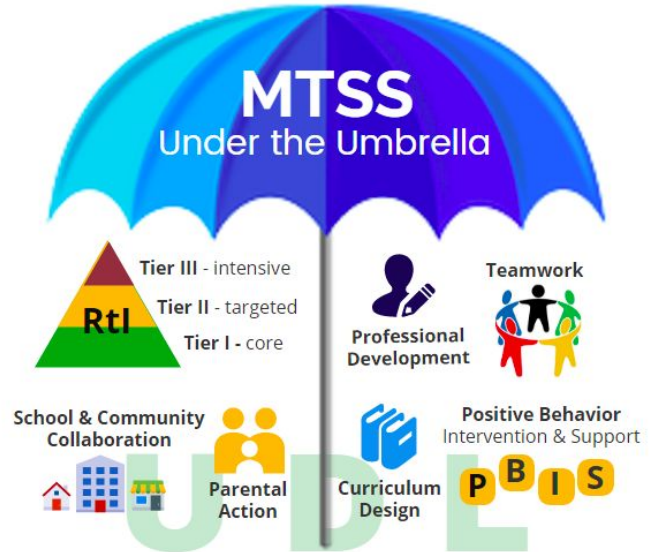
In addition to high quality classroom instruction, students will be eligible for the following:

- **Breakfast Club**
 - Certified teachers & non-cert paraprofessionals
 - 20 minutes 4x weekly before school begins
- **After-School Clubs**
 - Certified teachers & non-cert paraprofessionals
 - 45 minutes 2x weekly after school
 - Facilitated by the availability of a late bus
- **Revisions to Master Schedules**
 - Tier III interventions
 - Math Intervention
 - EL service separate from Title schedule
 - Building wide PD for teaching English Learners



MTSS: MULTI-TIERED SYSTEMS OF SUPPORT

- Dyslexia assessments & multimodal interventions
 - Grades K-2 yearly assessment
 - Specific intervention implemented
- Weekly Data meetings
 - Title/RtI traditional format
 - Progress monitoring
- Behavior MTSS
 - Build “tool kit” to address Tier I
 - Meet w/ team to evaluate, plan and implement
- IXL Diagnostic- targeted math intervention
 - K-5 diagnostic
 - Use data to prescribe targeted interventions
 - FOCUS Groups



SOCIAL EMOTIONAL LEARNING

- Jael- Comfort dog from Trinity Lutheran
- Panorama SEL Screener
- Behavior MTSS
- New collaboration w/ Regional Mental Health- in-school therapist
- Weekly Second Steps Lessons
- PRIDE Day



We're not sure who began using the phrase "Return to Learn" or "Accelerated Learning"...what we are sure of is we have **NEVER** stopped teaching & learning....we have been "accelerating" since our doors first closed in March of 2020.

Meister and Evans teachers have been giving more than 100%...doing more than required for our kids...going above and beyond in ways immeasurable. We have developed plans--revised interventions--layered on support--targeted instruction to close gaps AND make gains...planning for the next steps in surviving a world-wide pandemic is what WE DO...all day, everyday.

