

RAILROADER

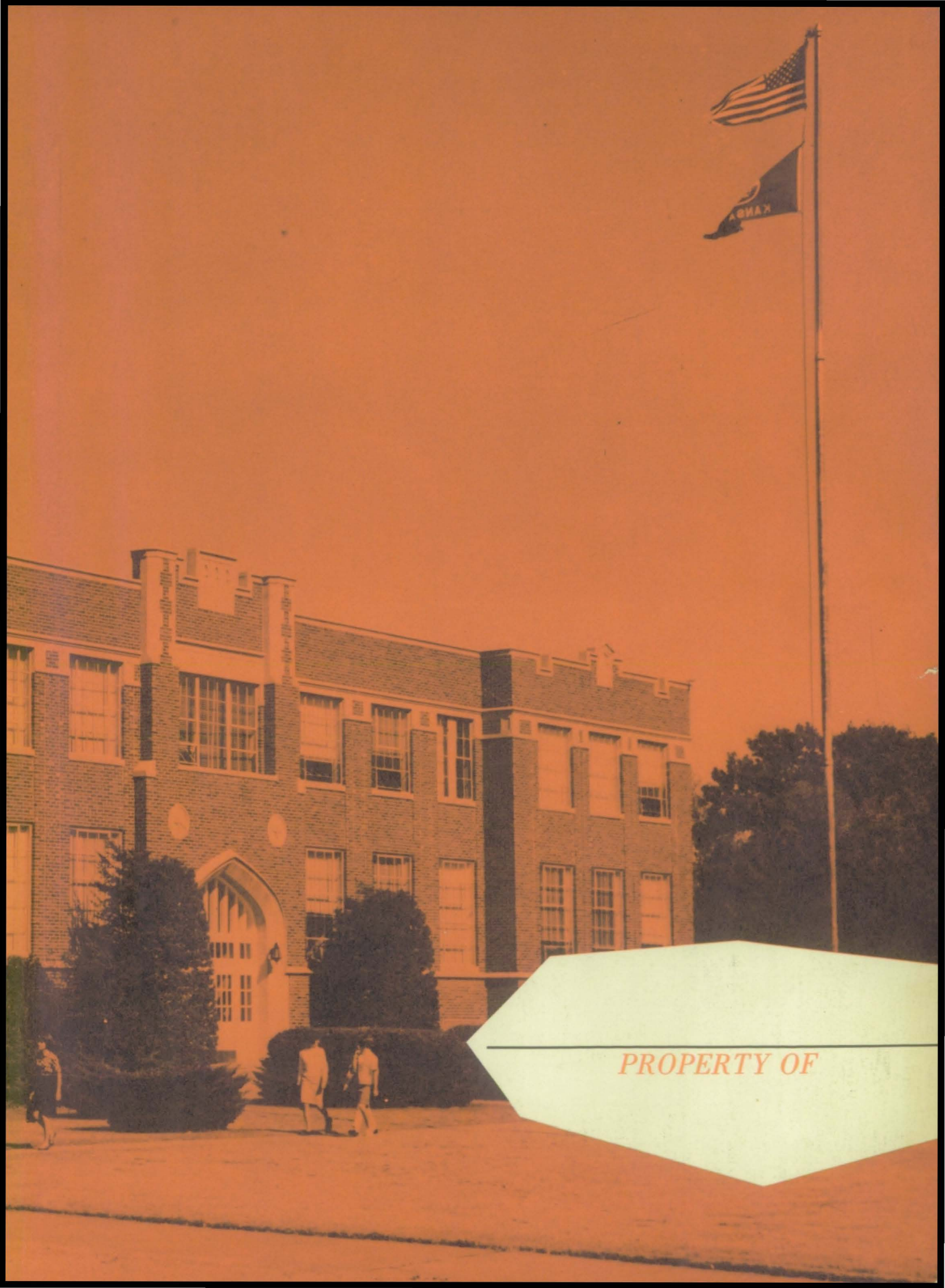


1945









*PROPERTY OF*





# *RAILROADER*

'65

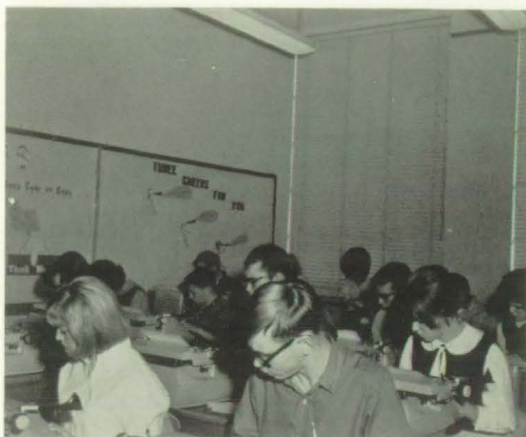


*ELLIS HIGH  
SCHOOL*

*Ellis, Kansas  
Published  
by  
1965 Railroader Staff*



# *We Are . . .*



## *. . . Studious*

To gain knowledge, is why  
we are here.

## *Fun- Loving . . .*

Dancing during the  
lunch hour gives a  
welcome break in the  
day.



## *. . . Just Plain Ham*

Miss Johnson, Where are you  
going with those desks?!



...

## *Mischievous . . .*

For the last time,  
bring those desks back  
here!



## *. . . Full of Zip*

Up and over,  
fellas!

## *Starry-eyed . . .*

Boy meets girl at high school,  
too.

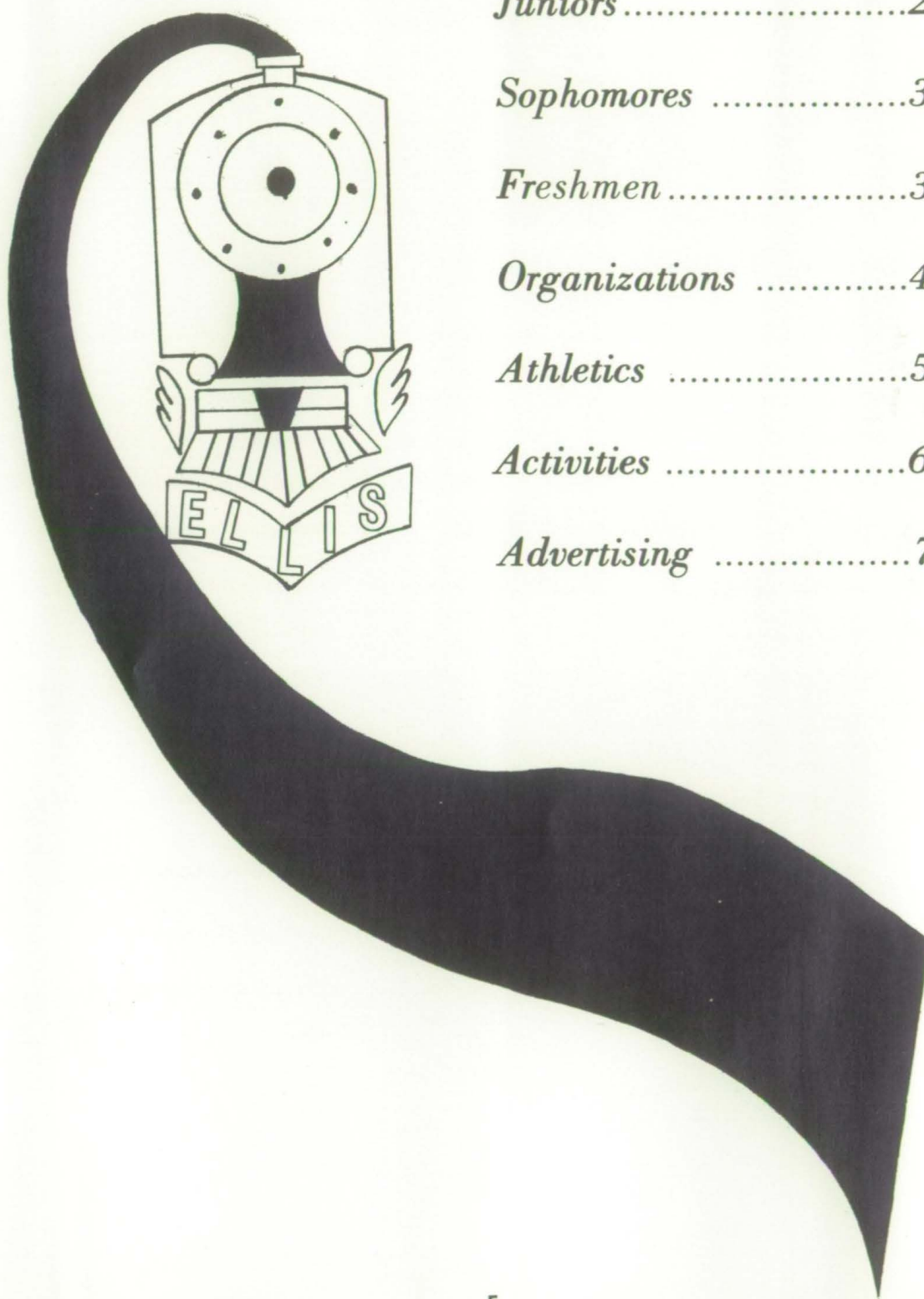






We, the Class of '65, are proud and honored to dedicate our yearbook to Mrs. Alice Balcombe who has been with us throughout our high school years. We want you to know that your untiring efforts in our behalf are gratefully appreciated. May we ever be worthy of your confidence in us.





*Faculty* .....8

*Seniors* .....13

*Juniors* .....29

*Sophomores* .....33

*Freshmen* .....37

*Organizations* .....41

*Athletics* .....53

*Activities* .....63

*Advertising* .....73



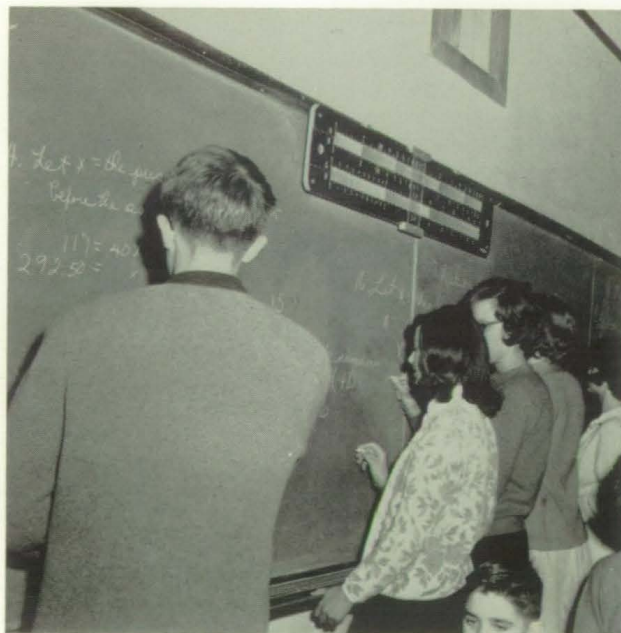


Needles and pins all straight  
in a row.  
In Home Economics Shirley  
learns to sew.

## Classes

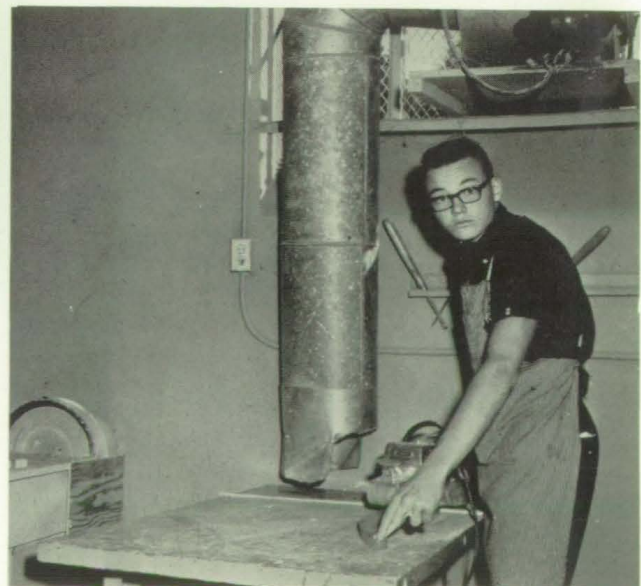


Nice serve, Jane.



Art isn't watching what  
he's doing.  
Art is about to lose a  
finger.

$A + B = B + A$   
In Mr. Mills' class it's al-  
ways done the right way.





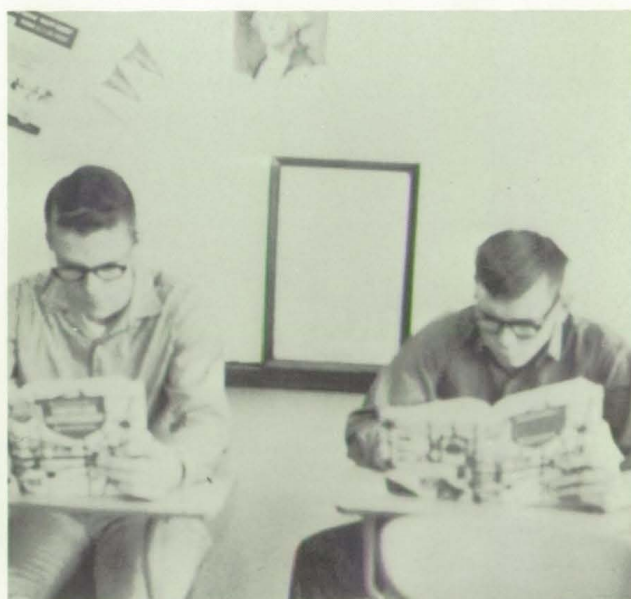


This dreamer is supposed to be studying her Spanish. We hope Senora doesn't catch you, Cindy.



Amid the confusion of Ellis High, we find Debbie and Benita concentrating (?) in Typing I.

Meanwhile in Art class - - - Carol is making a sculpture of a - - -?!!



Constitution is a challenge for these two dedicated scholars.





*FACULTY*





#### SCHOOL BOARD

Roy Feldkamp, Richard Disney, Ernest Armbruster  
Doctor Surface, Paul Augustine, and Russell Mallory



SECRETARY  
Marge Wiesner

## *Administration Personnel*



SUPERINTENDENT  
E. A. Fitzgerald



PRINCIPAL  
George Bray



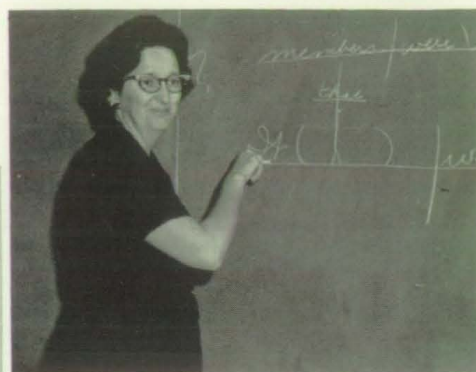
# Faculty



MARY KOCH  
Constitution  
Physical Education



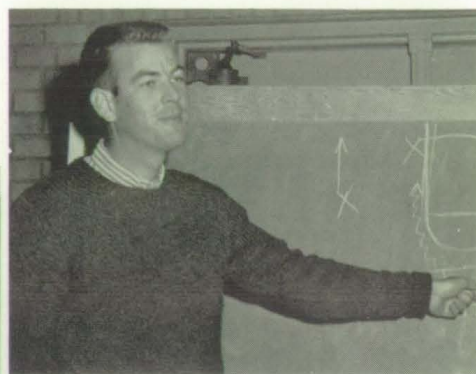
JIM APPLEBEE  
Mathematics  
Physical Education



BETTY HALL  
English



JOYCE JOHNSON  
English  
Journalism



JIM PENQUITE  
History  
Physical Education



HARRY MOOS  
English  
Dramatics



MARSHALL HARRISON  
Music



PAT THOMAS  
Commerce

Sponsored by  
JADE CLEANERS





ARLIN MILLS  
Mathematics  
Science



ALICE BALCOMBE  
Languages



THOMAS ROBINSON  
Guidance  
Economics



ENOLA VON LINTEL  
Art



JAMES MARTIN  
Industrial Arts  
Driver's Education



PAULINE SCOTT  
Librarian



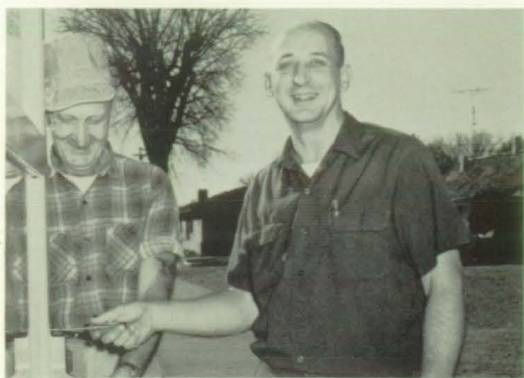
ROBERT SNIDER  
Agriculture



CAROL ATKINSON  
Home Economics

Sponsored by  
ELLIS REVIEW





CUSTODIANS  
Bill Kinderknecht  
Blair Furbeck



COOKS  
Margaret Fondoble  
Francis Huffman  
Francis Denning



OFFICE GIRLS  
Donna Gabel, Roselin Jacques, Karen  
Kroeger, Connie Huffman, Mary  
Alice Fisher, Patty Kutina, Kay  
Honas, and Carol Landauer (not  
pictured).



BUS DRIVERS  
Kenny Herman, Ralph  
Schubert, Ray Eaton,  
Raymond Kroeger, Ed-  
die Waldschmidt,  
Lawrence Schubert, and  
Frank Augustine.



LIBRARIANS  
Judy Augustine, Sharon Geist, Phyllis  
Flax, and Kathy Kneiling.





*SENIORS*



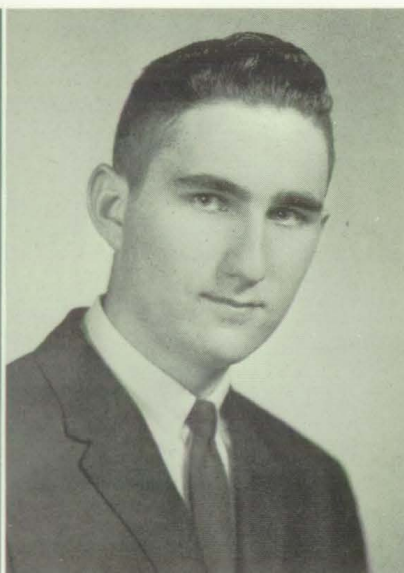
WARREN  
ALLEN



NORENE  
ALLOWAY



SHARON  
ALLOWAY



GREG  
ARMBRUSTER

GILBERT  
AUGUSTINE



CHERYL  
BAILEY







BEVERLY  
BEGLER

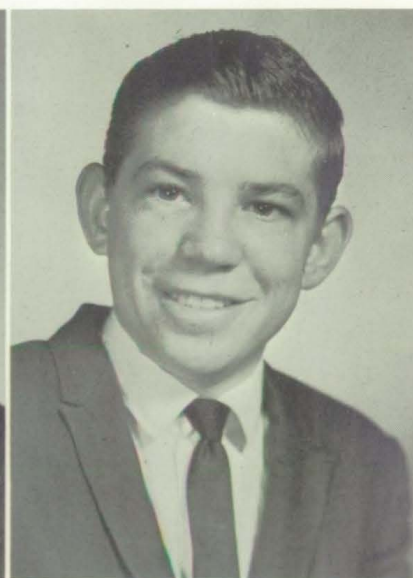


BOB  
BERENS

JERRY  
BIEKER



STEVE  
BIRDSSELL



STEVE  
BITTEL



GLEN  
COX





DURYEA  
DESMARTEAU



CAROL  
DINKEL



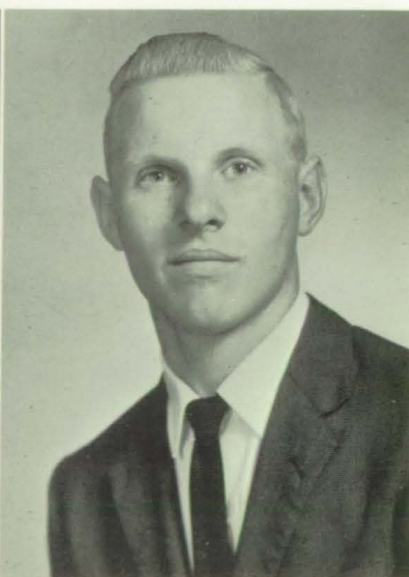
HELEN  
DINKEL

DAVID  
DEUTSCHER

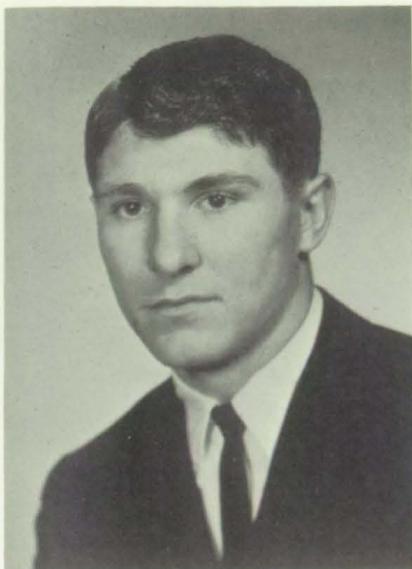
MARILYN  
EBERLE



DANNY  
GABEL





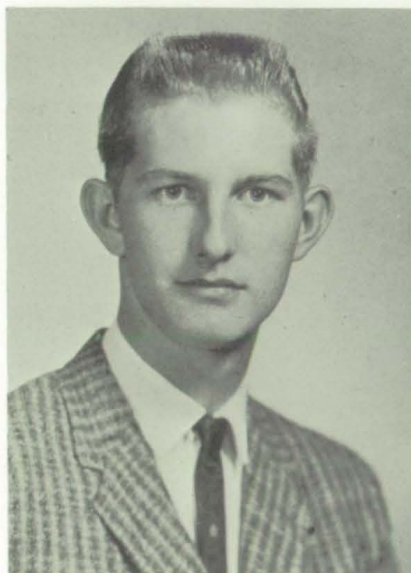


DENNIS  
GABEL

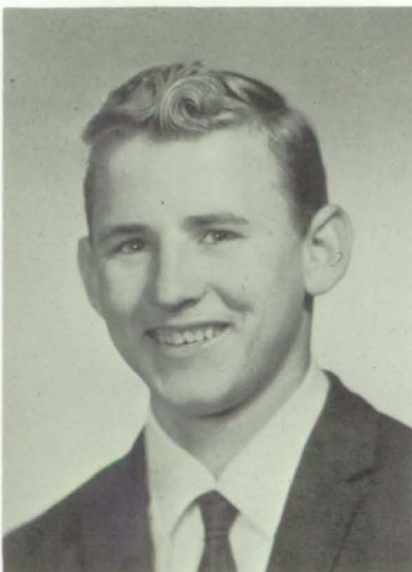


LINDA  
GREEN

GARY  
HELGET



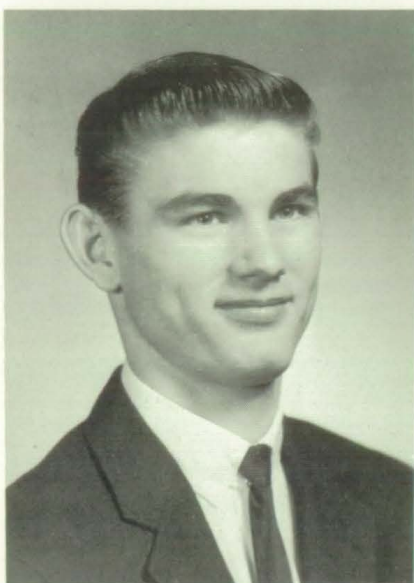
BILL  
HENDERSON



BOB  
HENDERSON

KAY  
HONAS

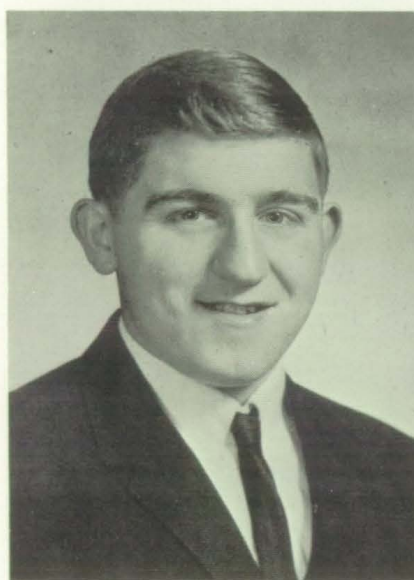




MARVIN  
HONAS



VIVIAN  
HONAS



CHARLES  
HORNER



BARBARA  
HUFFMAN

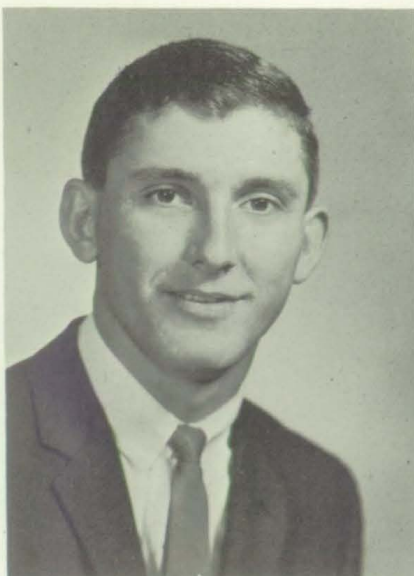
CONNIE  
HUFFMAN



CHARLENE  
JONES







DUANE  
KELLER



VIRGINIA  
KELLER

BILL  
KING



KATHY  
KNIELING



SHARON  
KOHL

GLEN  
KROEGER





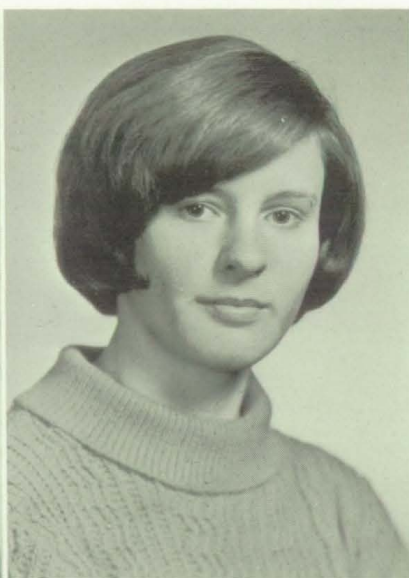
MYRON  
KROEGER



CAROL  
LANDAUER



GERALD  
LANG



PAT  
LOCKER

JOYCE  
LONGLEY



LARRY  
LUEA







PAUL  
LUEA



ELIZABETH  
MACKENDER

BETTY  
MAYES



ART  
NIERNBERGER



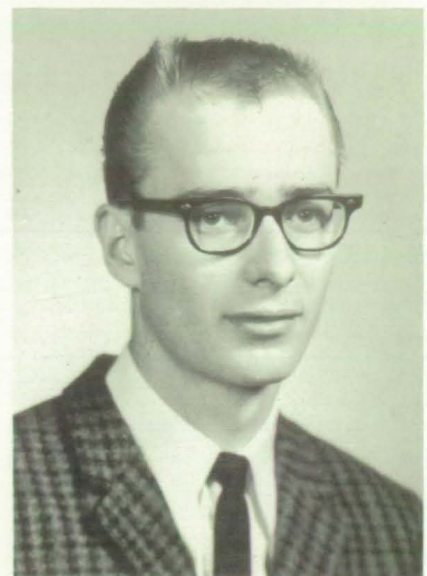
JOYCE  
ROBERTS

SHARON  
ROBERTS





BETTY  
SCHMIDT



EUGENE  
SCHOENBERGER



CHERYL  
SCHOENTHALER

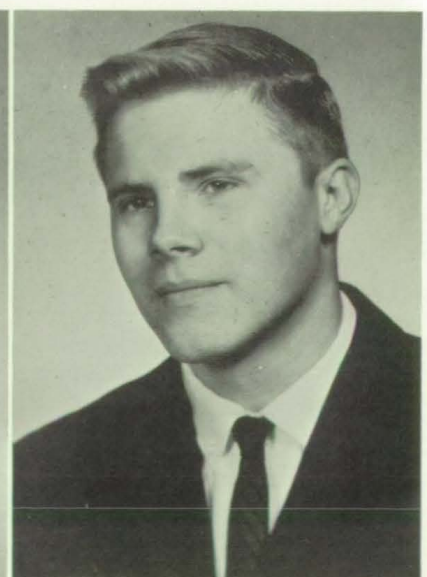


ALETA  
SCHUMM

ELIZABETH  
SCHUSTER



JIM  
SCOTT







SYBIL  
SMITH

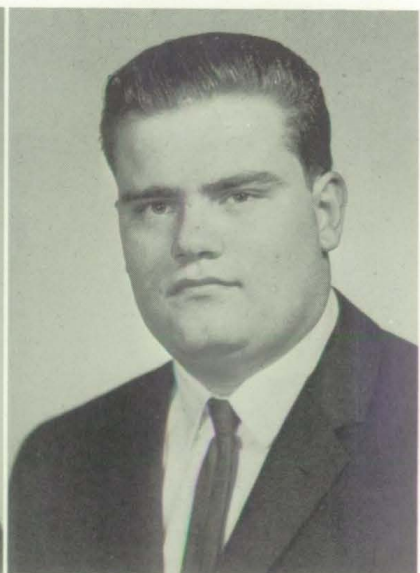


LUE ANN  
SNIDER

SALLY  
STEEL



BOB  
WEBB



ALLEN  
WEIGEL

SUSAN  
WEIMER

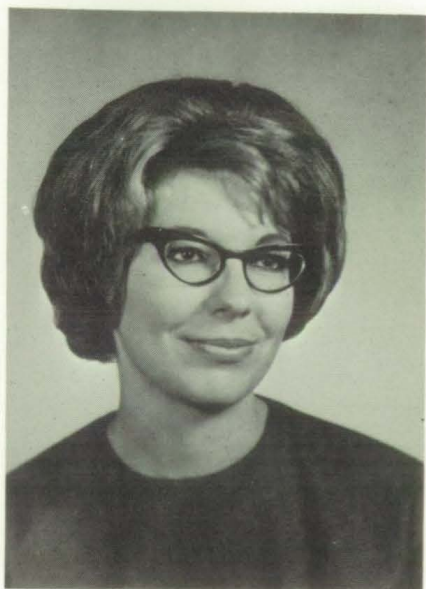




CINDY  
WHEELER



ROSE ANN  
WINDHOLZ



JUDY  
YOUNGER



ALLEN, WARREN--Kays 1,2,3, Board of Dir. 4; Class Treasurer 2,4; Chorale 1,2,3; Small Chorus 2; Madrigal Acc. 3; Prom Acc. 2; Newspaper-yearbook staff 4; District Music Contest 2; Golf 1,2; Scholarship Tests 4; REA Essay Winner 3.

ALLOWAY, NORENE--Transfer from Trego Community High School 3; Scholarship Tests 4.

ALLOWAY, SHARON--Kayettes 1, 3, Board of Dir. 2,4; Chorale 3,4; SnowBall Princess 3, Queen-4; Sr. Play; Office Assistant 3; Newspaper-yearbook staff 4; Scholarship Tests 1,2,3,4.

ARMBRUSTER, GREG--FFA 2,3, Vice-president 4; Newspaper-yearbook staff 4; Scholarship Tests 1,2

AUGUSTINE, GILBERT--Kays 2,3,4; Football 1,2,3; Golf 1,2,3.

BAILEY, CHERYL--Kayettes 1,2,3, Board of Dir. 4; Chorale 1,2,3, Acc. 4; Small Chorus 2; Madrigal 3, Acc. 4; Pep Band 1,2,3,4; Band Treasurer 2,4, Secretary 3; Office Assistant 2; Newspaper-yearbook staff 4; Scholarship Tests 4.

BEGLER, BEVERLY--Kayettes 1,2, Board of Dir. 2, Vice-president 4; Newspaper-yearbook staff 4; Scholarship Tests 1.

BERENS, BOB--FFA 1,2,3,4; Basketball 1.

BIEKER, Jerry--Newspaper-yearbook staff 4; Football 4\*; Basketball 1,2,3,4; Tennis 2 3\*,4\*.

BIRDSSELL, STEVE--Transfer from Jewell, Kansas, 2; FFA 1,2,3,4; Jr. Play.

BITTEL, STEVE--Kays 1,2,3,4; Chorale 1; Dance Band 3; Pep Band 2; Jr. and Sr. Plays; Football 1,2,3,4\*; Tennis 1,2,3,4.

COX GLEN--Class President 4; Prom Server 2; Homecoming King 4; Jr. Play; Football 1,2,3\*,4\*, Basketball 1,3; Track 1,2\*,3\*,4\*; Scholarship Tests 4.

DESMARTEAU, DURYEA--Newspaper-yearbook staff 4; Jr. Play; Football 1; Basketball 1,2,3,4; Track 2\*.

DEUTSCHER, DAVID--FFA 1,2,3,4; Football 1,2; Basketball 1; Track 1.

DINKEL, CAROL--Kayettes 1,2,3,4; Pep Band 4; Student Council 3; Jr. and Sr. Plays; Newspaper-yearbook staff 4; District Music Contest 3; Scholarship Tests 2,3,4.

DINKEL, HELEN--Kayettes 1,2,3,4.

EBERLE, MARILYN--Kayettes 1,2,3,4.

GABEL, DANNY--FFA 1,2,3,4; Football 1,2; Basketball 1; Track 1; Scholarship Tests 4.

GABEL, DENNIS--FFA 1; Student Council 1; Prom Server 2; Homecoming Att. 4; Jr. and Sr. Plays; Newspaper-yearbook staff 4; Football 1,2,3\*,4\*; Basketball 1,2; Track 1,2\*,3\*.

GREEN, LINDA--Transfer from Regina, Saskatchewan, Canada, 3.

HELGET, GARY--Kays 1,2,3,4; Football 1,2; Golf 1,2.

HENDERSON, BILL--Transfer from Great Bend, Kansas 4; Kays 4; Chorale 4; Pep Band 4; Newspaper-yearbook staff 4; Golf 4; Other schools: Pep Band 1,2,3; Dance Band 2; Latin Club 1,2,3,4; All-school One-act Play 3.

HENDERSON, BOB--Kays 2,3,4; Golf 1; Jr. Play.

HONAS, KAY--Kayettes 1,2,3,4; Office Assistant 3,4; Newspaper-yearbook staff 4.

HORNER, CHARLES--Football 1,2,3,4\*; Track 2,4; Sr. Play.

HUFFMAN, BARBARA--Kayettes 1,2,3,4; Class Treasurer 3; Cheerleader 1; Newspaper-yearbook staff 4.



HUFFMAN, CONNIE--Kayettes 1,2,3,4; Chorale 3; Class Treasurer 1; Cheerleader 2,3,4; Student Council 4; Prom Server 2; FFA Chapter Sweetheart Att. 4; Sr. Play; Girls' State 3; Office Assistant 4.

JONES, CHARLENE--Kayettes 1,2,3,4; Sr. Play; Newspaper-yearbook staff 4; Scholarship Tests 2,3,4.

KELLER, DUANE--FFA 1,2, Sentinel 3, President 4; Class President 2; Homecoming Att. 4; Sr. Play; Boys' State 3; Newspaper-yearbook staff 4; Football 1,2\*,4\*; Basketball 1,2\*,4\*; Track 1,2\*; Scholarship Tests 1,2,4; Elk Leadership Contest Winner 4.

KELLER, VIRGINIA--Kayettes 1,2,3,4.

KING, BILL--Kays 1,2, Board of Dir. 3; Chorale 2,3,4; Madrigal 3; Student Council 2,3, President 4; Prom Server 2; Jr. and Sr. Plays; Football 1,2\*,3\*,4\*; Basketball 1,3,4; Track 2,4; Tennis 1,2\*,3\*.

KNIELING, KATHY--Kayettes 1,2,3,4; Chorale 2,3; Sr. Play; Girls' State 3; Student Librarian 4; Newspaper-yearbook staff 4; Scholarship Tests 2,3,4.

KOHL, SHARON--Kayettes 1,2,3,4.

KROEGER, GLEN--Kays 4; Chorale 1,2,3,4; Small Chorus 2; Madrigal 4; Dance Band 1,2, Pep Band 2,3; Band Student Council Rep. 2; Student Council 1; Jr. Play; Boys' State 3; Newspaper-yearbook staff 4; District Music Contest 1,2,3,4; Football 1; Scholarship Tests 1,2,3,4; KU Science Camp 3; Masonic Essay Winner 4.

KROEGER, MYRON--Kays 1,2, Board of Dir. 3,4; Class Vice-president 1,2,3,4; Jr. and Sr. Plays; Newspaper-yearbook staff 4; Basketball 3; Golf 1; Scholarship Tests 1,2,3,4; KU Science Camp 3.

LANDAUER, CAROL--Kayettes 1,2,3,4; Office Assistant 4.

LANG, GERALD--Kays 1,2, Board of Dir. 3, President 4; Sr. Play; Scholarship Tests 2,3,4.

LOCKER, PAT--Kayettes 1,2,3,4; Jr. and Sr. Plays; Newspaper-yearbook staff 4.

LONGLEY, JOYCE--Kayettes 1,3,4, Board of Dir. 2; Chorale 3,4; Cheerleader 1; Student Council 4; Newspaper-yearbook staff 4; Scholarship Tests 4.

LUEA, LARRY--FFA 1,2,3,4.

LUEA, PAUL--FFA 2,3, Secretary 4.

MACKENDER, ELIZABETH--Kayettes 4, Board of Dir. 1,2,3; Chorale 1,2,3,4; Double Quartet 2; Small Chorus 2; Madrigal 4; Pep Band 1,2,3,4; Student Council 2,3, vice-president 4; FFA Chapter Sweetheart Att. 4; SnowBall Princess 1; Jr. and Sr. Plays; Student Librarian 3; Newspaper-yearbook staff 4; District Speech Contest 3,4; State Speech Contest 3; Scholarship Tests 2,3,4.

MAYES, BETTY--Kayettes 1,2,3,4; Chorale 3,4; Pep Band 3; Twirler 1,2,3, Head majorette 4; Student Council 2,3, Secretary-treasurer 4; Jr. and Sr. Plays; Student Librarian 2; Newspaper editor 4; Yearbook staff 4; Scholarship Tests 3,4.

NIERNBERGER, ART--Kays 3, Board of Dir. 4; Chorale 1; Jr. and Sr. Plays; Basketball 1,2\*,3\*,4\*, Golf 1,2\*,3\*,4\*.

POE, MILDRED--Transfer from Great Bend, Kansas, 4.

RAHIMIAN, NASSER--Transfer from Brush, Colorado, 4.

ROBERTS, JOYCE--Kayettes 1,2,3,4; Newspaper-yearbook staff 4; Scholarship Tests 4.



ROBERTS, SHARON--Kayettes 1,2,3,4; Chorale 3; Newspaper-yearbook staff 4; Scholarship Tests 3,4.

SCHMIDT, BETTY--Kayettes 1,2,3,4.

SCHOENBERGER, EUGENE--Kays 3,4; Jr. Play: Football 1,2; Track 1,2; Golf 3.

SCHOENTHALER, CHERYL--Kayettes 1,2,3, Secretary 4; Class Secretary 3; Chorale 1,2,3,4; Small Chorus 2; Madrigal 3,4; Pep Band 3,4; Band Treasurer 3; Twirler 1,2, Head Majorette 3, Drum majorette 4; Prom Server 2; Homecoming Queen 4; FFA Chapter Sweetheart 3; Jr. and Sr. Plays; Student Librarian 2; Newspaper-yearbook staff 4; Scholarship Tests 3,4.

SCHUMM, ALETA--Kayettes, Board of Dir. 1,2,3, President 4; Class President 3; Chorale 1,2,3,4; Small Chorus 2; Madrigal 3,4; Dance Band 1,2,3; Pep Band 1,2,3,4; SnowBall Princess 2, Att. 4; Jr. and Sr. Plays; Newspaper-yearbook staff 4; District Music Contest 1,3,4; Scholarship Tests 1,2,3,4; REA Essay Winner 3.

SCHUSTER, ELIZABETH--Kayettes 1,2,3,4; Scholarship Tests 4.

SCOTT, JIM--Kays 1,2,3, Treasurer; Chorale 1; Dance Band 3; Pep Band 3; Student Council 2,4; Jr. and Sr. Plays; Football 4; Basketball 4; Golf 1,2\*,3\*,4\*.

SMITH, SYBIL--Kayettes 1,3,4, Secretary 2; Newspaper-yearbook staff 4; Sr. Play.

SNIDER, LUE ANN--Kayettes 1,2,3,4; Sr. Play; Office Assistant 3; Scholarship Tests 1.

STEEL, SALLY--Kayettes 2,3,4, Board of Dir. 1; Chorale 1,2,3,4; Double Quartet 2; Small Chorus 2; Madrigal 3,4; Student Council 1; Homecoming Att. 4; Jr. and Sr. Plays; Office Assistant 3; Newspaper-yearbook staff 4; District and State Music Contest 2,3,4; Scholarship Tests 2.

WEBB, BOB--Kays 2,3,4; Chorale 1; Football 4; Track 1,2.

WEIGEL, ALLEN--FFA 1,3,4; Newspaper-yearbook staff 4.

WEIMER, SUSAN--Kayettes 1,2,3,4; Chorale 2; Cheerleader 2,3,4; Prom Server 2; Scholarship Tests 4.

WHEELER, CINDY--Kayettes 1,2,3,4; Chorale 3,4; Jr. and Sr. Plays; Student Librarian 2; Yearbook editor 4; Newspaper staff 4; Scholarship Tests 1,2,3,4.

WINDHOLZ, ROSE ANN--Kayettes 1,2,3,4; Chorale 1.

YOUNGER, JUDY Kayettes 1,2,4, Secretary 3; Class Secretary 1,2; Chorale 2,3; Cheerleader 1, Head 2,3,4; Prom Server 2; Homecoming Att. 4; FFA Chapter Sweetheart Att. 3; SnowBall Att. 4; Jr. and Sr. Plays; Newspaper-yearbook staff 4.

HONAS, MARVIN--Kays 1,2,4, Board of Dir. 3; Class President 1; Prom Server 2; Jr. Play; Basketball 1,2\*,3\*,4\*; Tennis 1\*,2\*,3\*,4\*; Scholarship Tests 3,4.

HONAS, VIVIAN--Kayettes 1,2,3, Treasurer 4; Class Secretary 4; Newspaper-yearbook staff 4.

#### CLASS MOTTO:

"They conquer who believe they can."

#### CLASS COLORS:

Pink and Silver

#### CLASS FLOWER:

Pink Rose



# Snapshots







*JUNIORS*



James Allen  
Richard Bieker  
Elaine Bittel  
Dennis Borgeson

Cort Clorfelter  
Eddie Collins  
Debbie Daily  
Maxine Denning



Duane Desmarteau  
Carol Dreiling  
Cynthia Engstrand  
Mary Alice Fisher

Betty Fuller  
Alvie Furbeck  
Donna Gabel  
Marjorie Geist



Carol Gibson  
Dianna Gile  
Roselin Jacques  
Ernest Keller

Glen Keller  
Twila Keller  
Mary Lou Kingsley  
Alan Klusener



Karen Kroeger  
Benita Kuhn  
Patty Kutina  
Jo Ann Lang



Alvin Laymon  
Dennis Littlechild  
Ronald Luea  
Beverly Matteson



Gary Meserve  
Judy Nelson  
Jack Nicholson  
Gary Niernberger

Tom Pearson  
Dennis Powell  
Bernard Ptasek  
James Rupp



Greg Shubert  
Terry Solomon  
David Smith  
Joyce Storm

Lorel Temple  
Shyrell Vine  
Carla Vonfeldt  
Bruce Waldschmidt



Gary Wegele  
Roy Weigel  
Donald Weimer  
Donna Weimer

David Wertz  
Gregory Wiesner  
Susan Wiesner  
Carolyn Younger





Marilyn Zerfas

## *Class Officers*

## *Class Sponsors*



Mrs. Thomas



Mr. Applebee



Marjorie Geist, Treasurer;  
Patty Kutina, Secretary;  
Gary Niernberger, President;  
Mary Lou Kingsley, Vice-President.



Do you mean  
this tied with  
the seniors for  
first place?





*SOPHOMORES*



Judy Augustine  
Linda Baugher  
Mary Sue Baugher  
Laura Beggs

Stanley Bittel  
Susan Bongartz  
Joe Bullard  
Dennis Chambers



Bonnie Clotfelter  
Linda Cox  
Leonard Day  
Diane Douglas

Ronald Eberle  
Modessta Engstrand  
Elizabeth Fischer  
Barbara Fisher



Phyllis Flax  
Donald Freed  
Ronald Freed  
Dean Gaschler

Sharon Geist  
Judy Geschwentner  
Donna Gile  
Annys Hagen



Rodney Hamburg  
Alan Hays  
Joyce Heroneme  
Linda Jacques



Marjorie Jones  
Milton King  
David Kippes  
Robert Lang



Bill Mallory  
Eugene Massier  
Steve May  
Norman Mickelson

Peggy Neuberger  
John Pinney  
Judy Riedel  
Steve Roberts



Sherilyn Robertson  
Shirley Roth  
Ronald Schmidt  
Clarinda Schoenthaler

James Schoenthaler  
Alvin Schuster  
Gary Seibel  
Kenneth Smith



Charles Snider  
Kenneth Snider  
Naomi Temple  
Phyllis Waldschmidt

Thomas Weber  
Eugene Weimer  
Paula Wolf  
Donald Younger





Diane Zachman

## *Class Sponsors*

## *Sophomore Officers*



Rodney Hamburg, Vice-President; Linda Cox, Treasurer; Phyllis Flax, Secretary; Ronnie Schmidt, President.



Miss VonLintel



Mr. Mills



Sophomore Construction?



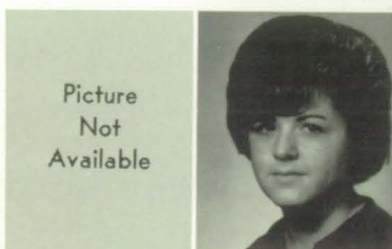


*FRESHMEN*



Linda Armentrout  
Arnold Augustine  
Joyce Augustine  
Karen Bailey

Kimberly Ball  
Ronald Berens  
Robert Bieker  
Rita Boos



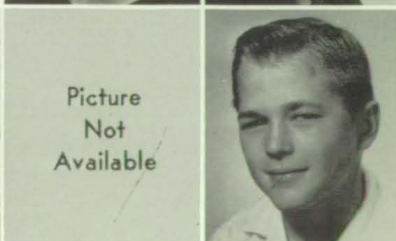
Laytha Brenner  
Karen Brown  
Gregory Deutscher  
John Deutscher

Bernadine Dietrich  
Sandra Dirks  
Pamela Dreiling  
Linda Eberle



Lucille Engel  
Jane Erbert  
Norbert Fisher  
Martina Flax

Rosebel Flax  
Shirley Flax  
Donna Geschwentner  
Cheryl Gibson



Tony Harris  
Cleo Hays  
Robert Helget  
Gerald Honas



Doris Huffman  
Karen Jacques  
Darcey Kingsley  
Douglas Kingsley



Vicki Klusener  
Albertha Kreutzer  
Ronald Kreutzer  
Linda Kroeger

Michael Kroeger  
Judy Kuhn  
Zoe Kuhn  
Douglas Kutina



Linda Lang  
Patty Lonnon  
Jane Mackender  
Gordon Merritt

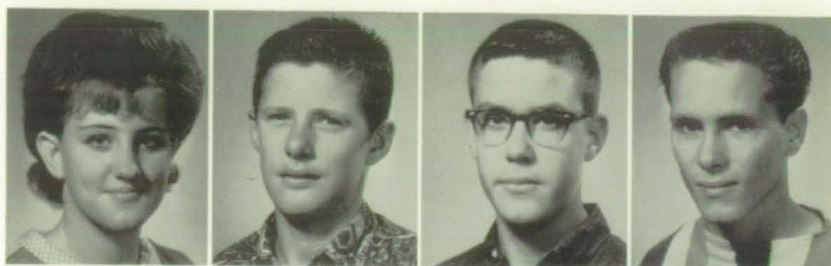
Elaine Nelson  
Paulette Nicholson  
Arlin Niernberger  
Jolene Niernberger



Paul Olmstead  
Carol Pfannenstiel  
Judy Pfannenstiel  
Leon Pfeifer

Joyce Riedel  
Beverly Roberts  
Larry Schuster  
Sandra Shubert





Mary Ellen Storm  
James Urban  
Leslie Ward  
Gerald Weber

Verlin Weber  
Lila Weigel  
Linda Weimer  
Phillip Wertz



Daniel Wiesner  
Goldie Windholz  
Darlene Wishnuck  
Patty Wittman

Danny Wolf  
Linda Younger  
Terry Zerfas



## *Class Sponsors*



Miss Atkinson



Mr. Moos



Gordon Merritt, Vice-President;  
Pamela Dreiling, Secretary;  
Jolene Niernberger, Treasurer;  
Danny Wiesner, President.

## *Class Officers*







*ORGANIZATIONS*



# Kayettes



Kayettes are the feminine branch of the Kansas Association for Youth. The Kayettes are a character building, leadership-training program for the junior and senior high school students. The main objective of this organization is to teach its members the principles of democratic living by training them to accept the responsibilities of their community, country, and world. Our goals are that our members should leave EHS with better manners, appearances, personalities, and a better outlook on life. This year the Kayettes tried for the highest possible award, the 3000 point award, with the help of our wonderful sponsor, Miss Mary Koch, and the full participation of every Kayette. Several of the projects this year included: a UNICEF drive, the annual Snoball, a caroling party with the KAYS and FFA, the Follies and supper, a hobo day, and an Easter egg hunt.

## BOARD MEMBERS

Cheryl Bailey  
Cheryl Schoenthaler  
Aleta Schumm  
Vivian Honas  
Beverly Begler  
Maxine Denning  
Carol Dreiling  
Clarinda Schoenthaler  
Linda Jacques  
Benita Kuhn  
Sponsor: Miss Mary Koch

Sponsored by  
MARIE'S CAFE







## *Kays*

The Kansas Association for Youth is one of several high school clubs organized to help sway the development of character and leadership in young high school students. Community service, appreciation of our fellowmen, and recreation are a few more components of one's personality which the club stresses.

A few projects which were part of the club's program during the past year included the selling of Christmas holly, urging people to vote in the 1964 presidential election, and a day set aside for tidying up public parks. In the month of April the annual KAY party was held to round out and climax the social side of the program.

For the second year now, the Ellis club will try to merit the presentation of the 2,000 point award. With this record, it is ranked 8th in the state among 700 participating schools.

### BOARD

Glen Keller  
Alan Klusner  
Warren Allen  
Jack Nicholson



### MEMBERS

David Wertz  
Jim Scott  
Myron Kroeger

### ADVISOR

Mr. Robinson

## *Future Farmers of America*



OFFICERS: Advisor - Mr. Schneider, Reporter - Roy Weigel, Sentinel - Danny Gabel, S. C. Rep. - Ronnie Luea, Vice Pres. - Greg Armbruster, President - Duane Keller, Secretary - Paul Luea, Treasurer - Larry Luea

Learning to do, Doing to learn, Earning to live, Living to serve; this is the motto of the FFA. The Ellis chapter really lived up to it this year. Last fall the officers attended Leadership School and brought back some very useful information. The chapter also sent some delegates to the State and National conventions. Through the year they sponsored the annual Barnwarmer and held a Parent-and-Son banquet. At the banquet awards were given to outstanding members. All of the members found that being in FFA this year was a fun but rewarding experience.



Sponsored by  
SNIDER ELECTRIC



## *Pep Club*



The Pep Club of this year was the sharpest looking and most enthusiastic of any that has been organized for a long while. Its success was largely due to the efforts of Miss Mary Koch, Kayette advisor, and through her initiation of the attractive weskits.

## *Student Council*

The Student Council was organized to give the student a share in the governing of his school. Advised by Principal Bray, this council of representatives from each class kept most of the activities running smoothly and sponsored the Homecoming Parade and Dance. Also, to give the spacious halls more to the holiday season, they bought and decorated a Christmas tree.

OFFICERS:  
President  
Bill King  
Vice President  
Elizabeth Mackender  
Secretary-Treasurer  
Betty Mayes



Sponsored by  
CENTRAL KANSAS POWER CO. GAS DIVISION



## Vocal Groups



ROW ONE--S. Alloway, A. Schumm, B. Roberts, B. Dietrich, C. Wheeler, M. Denning, S. Robertson, E. Mackender, P. Wittman, ROW TWO--S. Steel, J. Longley, C. Schoenthaler, P. Neuberger, L. Cox, K. Ball, D. Kingsley, P. Nicholson, J. Kuhn, R. Gibson, J. Mackender, ROW THREE--K. Bailey, B. Kuhn, B. Mayes, L. Kroeger, B. Clotfelter, C. Schoenthaler, S. Vine, D. Weimer, S. Dirks, L. Weimer, S. Shubert, D. Huffman, P. Lonnon, ROW FOUR--T. Pearson, A. Klusner, G. Kroeger, D. Kingsley, G. Merritt, D. Powell, D. Smith, K. Snider, B. Mallory, G. Keller, T. Zerfas, B. Henderson, P. Olmstead.



ROW ONE--S. Alloway, A. Schumm, B. Roberts, B. Dietrich, C. Wheeler, M. Denning, S. Robertson, E. Mackender, P. Wittman, ROW TWO--S. Steel, J. Longley, C. Schoenthaler, P. Neuberger, L. Cox, K. Ball, D. Kingsley, P. Nicholson, J. Kuhn, R. Gibson, J. Mackender, ROW THREE--K. Bailey, B. Kuhn, B. Mayes, L. Kroeger, B. Clotfelter, C. Schoenthaler, S. Vine, D. Weimer, S. Dirks, L. Weimer, S. Shubert, D. Huffman, P. Lonnon.



ROW ONE--G. Kroeger, D. Powell, D. Smith, G. Keller, ROW TWO--T. Zerfas, D. Kingsley, B. Mallory, B. Henderson, ROW THREE--P. Olmstead, A. Klusner, T. Pearson, K. Snider, G. Merritt.

Sponsored by  
MAX the CLEANERS and DELLA'S FLOWER SHOP





## *Madrigal*



ROW ONE--Mr. Harrison, S. Steel, D. Kingsley, B. Dietrich, E. Mackender, P. Lonnon, C. Schoenthaler, L. Kroeger, A. Schumm, C. Bailey (Acc.), ROW TWO--G. Keller, K. Snider, D. Powell, D. Smith, B. Mallory, G. Kroeger, A. Klusner, T. Pearson, (J. Allen, not pictured)



Sponsored by  
WOLF'S MONUMENTS

# *E.H.S. Orange and Black Band*

After sending a recording, a picture, and clippings to the fair board, the Ellis High School Band received an invitation to attend the New York World's Fair. They were to play July 12, 1965, at Tiparillo Pavillion. The band members realize that this is a great honor even though they were unable to go.

## CLARINETS

C. Bailey  
K. Ball  
B. Clotfelter  
B. Matteson  
D. Gile  
J. Augustine  
P. Lonnon  
J. Erbert  
V. Klusner  
P. Wittman (not pictured)

## FLUTES

E. Mackender  
K. Bailey  
S. Robertson  
E. Nelson

## CORNETS

A. Schumm  
T. Pearson  
G. Keller  
A. Klusner  
B. Kuhn  
J. Mackender

B. Mallory (not pictured)

## ALTO SAX

J. Nelson  
M. Geist  
L. Kroeger (not pictured)

## TENOR SAX

P. Kutina  
M. Engstrand

## BARITONE SAX

G. Meserve (not pictured)



Sponsored by

ELLIS PLUMBING AND HEATING



BAND OFFICERS  
 A. Klusner--Representative  
 D. Powell--President  
 K. Smith--Treasurer  
 G. Keller--Vice-President  
 C. Schoenthaler--Librarian  
 C. Bailey--Secretary



BASSOON  
 C. Dinkel

CONTRA BASS CLARINET  
 D. Kingsley

BASS CLARINET  
 C. Schoenthaler

ALTO CLARINET  
 B. Mayes

TROMBONES  
 J. Scott (not pictured)  
 D. Kingsley  
 G. Merrit

BARITONE  
 D. Powell

BASS  
 D. Smith

FRENCH HORN  
 C. Kroeger (not pictured)

B. Henderson  
 K. Kroeger (not pictured)  
 J. Kuhn

PERCUSSION  
 S. Roth  
 L. Jacques  
 K. Smith  
 C. Hays  
 S. Steel  
 C. Schoenthaler  
 R. Schmidt



Sponsored by

JOHNSON'S FUNERAL CHAPEL

## Pep Band



ROW ONE--R. Schmidt, C. Bailey, C. Schoenthaler, K. Ball, K. Bailey, A. Klusner, T. Pearson, A. Schumm, ROW TWO--J. Augustine, D. Gile, P. Kutina, M. Geist, J. Nelson, ROW THREE--P. Neuberger, D. Kingsley, S. Steel, B. Henderson, E. Mackender, C. Dinkel, G. Keller.



DRUM MAJORETTE, (left)  
Cheryl Schoenthaler  
MAJORETTES, (below)

Betty Mayes, Head Majorette  
Clarinda Schoenthaler  
Modessta Engstrand  
Linda Jacques  
Shirley Roth



Sponsored by

BARTELL's FORD SALES





Mary Lou Kingsley



Susan Weimer



Connie Huffman

Libby  
Fischer

Linda  
Weimer

Jane  
Mackender



Bonnie  
Clotfelter

Sherry  
Robertson

Judy Younger



Debbie Daily



# *Cheerleaders*

## *Newspaper-Yearbook Staff*



These students, headed by their advisor Miss Joyce Johnson, made up the newspaper and yearbook staff which has produced the 1965 annual. The newspaper, under the editorial guidance of Betty Mayes, and yearbook, edited by Cindy Wheeler, were the result of the efforts put forth by a staff devoted in making their publications among the best that Ellis High School has seen.

## *Boys'-Girls' State*

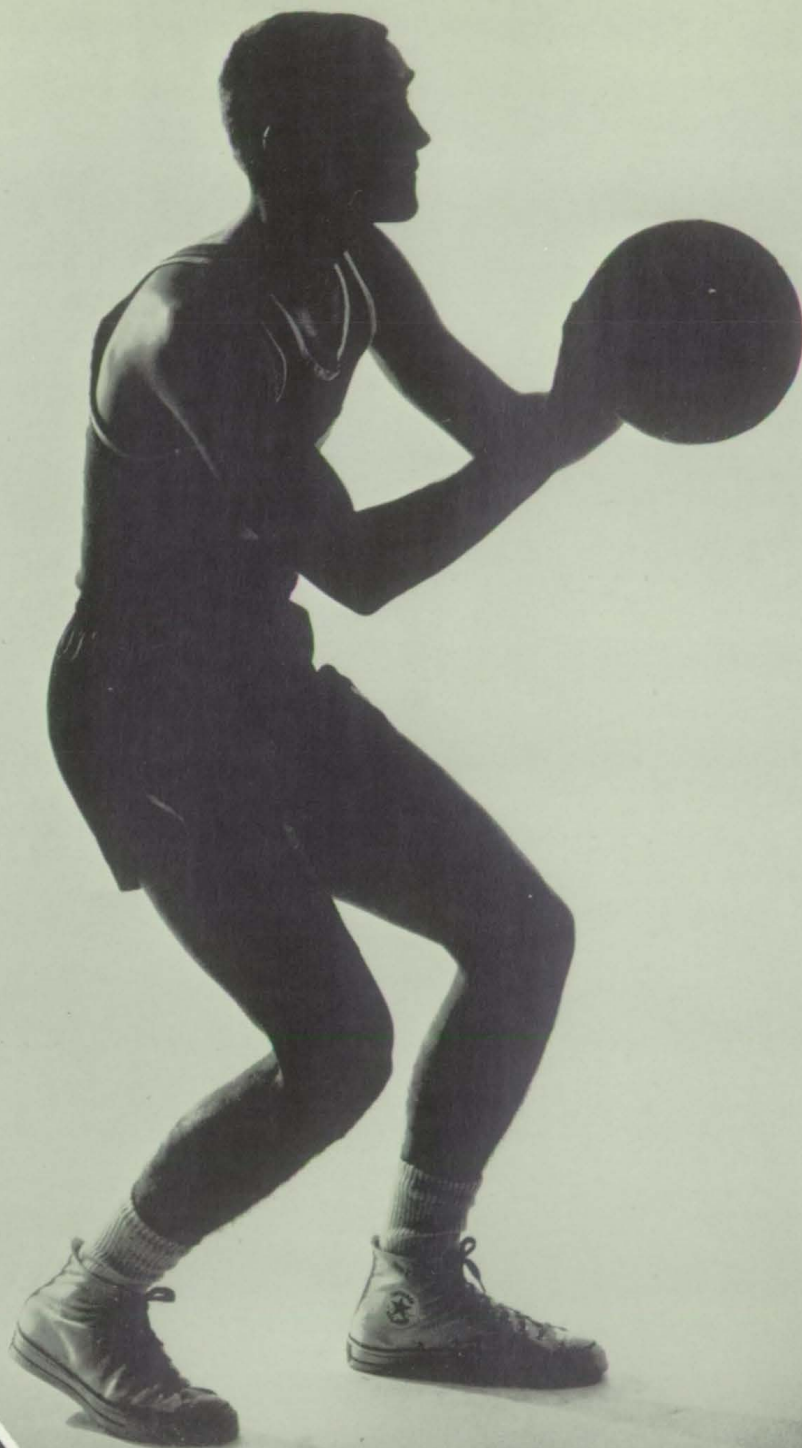
Duane Keller and Glen Kroeger were chosen by the Lions and Rotary Clubs respectively to represent Ellis in the 1964 session of the American Legion Boys'- State. Girls' State was attended by Connie Huffman and Kathryn Knieling through the efforts of American Legion Women's Auxiliary.

Learning government by actual participation was the goal during the Boy's State week of June 1-7 and during Girls' from June 7-14.



Sponsored by  
VIC HUBBS, INS.





*ATHLETICS*



FRONT ROW - Bill King - Gerald Beiker - Dennis Gable - Duane Keller - Steve Bittel - Glen Cox - David Deutscher - Charles Horner  
 SECOND ROW - Bill Mallory - Gary Meserve - David Smith - Dennis Powell - Norman Mickelson - Jim Scott - Jim Rupp - Donald Weimer  
 THIRD ROW - Asst. Coach, Jim Penquite - Tom Weber - John Pinney - Alan Hays - Alvin Laymen - Kenny Smith - Dennis Chambers - Gordon Merritt - Coach, Jim Applebee.

## 1964 Football Team

Jim Applebee  
Coach

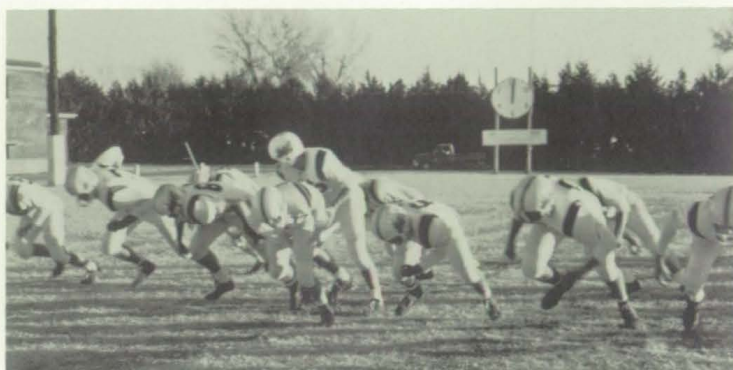


### Season Record

Ellis	Opponents
0 - - - - 0	LaCrosse
14 - - - - 25	Phillipsburg
12 - - - - 25	Plainville
20 - - - - 0	Victoria
19 - - - - 20	Stockton
7 - - - - 33	Hill City
0 - - - - 21	Wakeeney



"Down the field Big Team  
- - - Down the field!"



da da da da da - - -  
"CHARGE"

"Please, guys, I'd rather  
do it myself!!!"



"Block 'em -  
stomp 'em!"

"43 - Dive!"





JIM SCOTT  
Tackle

STEVE BITTEL  
Tackle

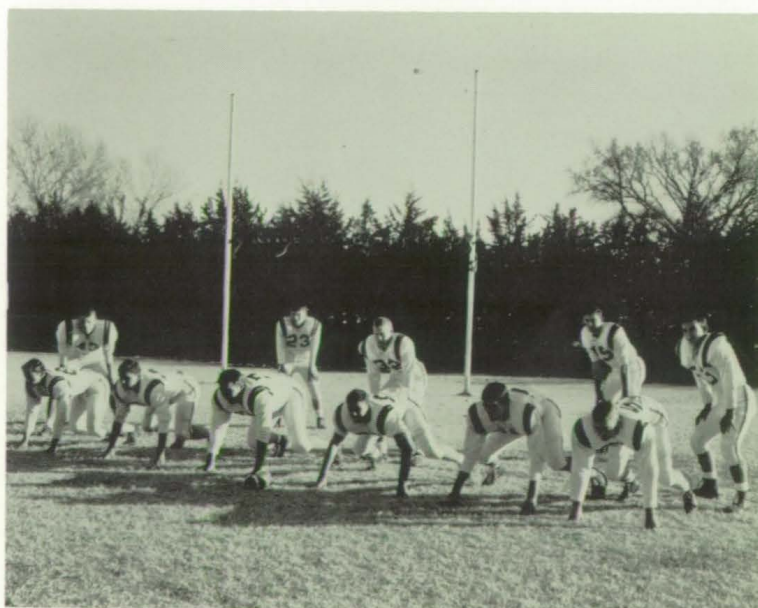


The 1964 Ellis football team placed three boys on the Mid-Continent League second team. They are as follows: Glen Cox, guard; Duane Keller, quarterback; Dave Smith, tackle. Dennis Gable, Bill King, Gerald Beiker and Dennis Powell received honorable mention.



GERALD BEIKER  
End  
CHARLES HORNER  
Guard  
DAVID DEUTSCHER  
End

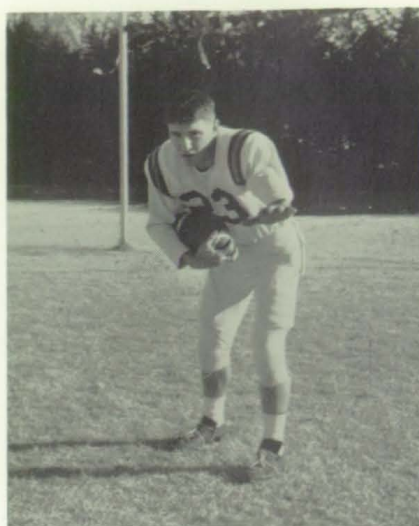
#### Defense



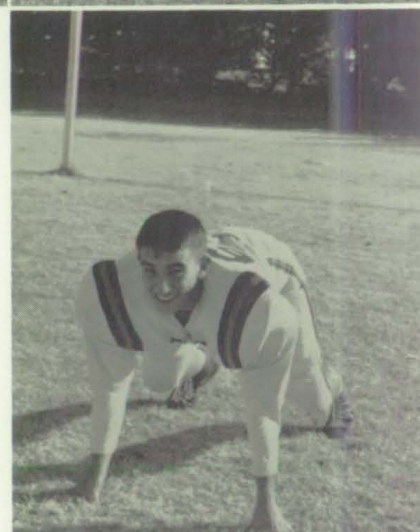


DENNIS GABLE  
Halfback

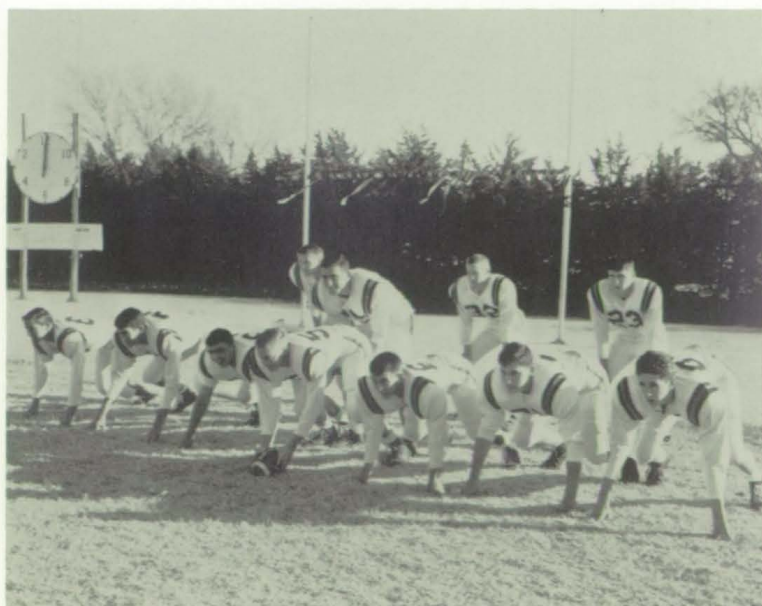
DUANE KELLER  
Quarterback



The 1964 football team was led by nine senior boys. This year's tri-captains were Dennis Gable, Bill King and Glen Cox.



#### Offense



BILL KING  
Guard  
GLEN COX  
Center

# Basketball



## SEASON'S RECORD

ELLIS	64	HAYS	65
ELLIS	61	LACROSSE	58
ELLIS	56	CADETS	60
ELLIS	67	WAKEENEY	52
ELLIS	55	HILL CITY	57
ELLIS	67	WAKEENEY	58
ELLIS	58	STOCKTON	52
ELLIS	84	WAKEENEY*	47
ELLIS	63	PHILLIPSBURG*	58
ELLIS	51	STOCKTON*	46
ELLIS	64	PLAINVILLE	48
ELLIS	66	PHILLIPSBURG	59
ELLIS	69	PALCO	44
ELLIS	66	QUINTER	81
ELLIS	85	JENNINGS*	61
ELLIS	58	HOXIE*	57
ELLIS	62	BUSHTON*	72

The Ellis Railroaders finished the year with a fine season mark of 12 wins and 5 losses. During the season the Railers compiled a 5-1 record to take second place in league play. After upending the high flying P-burg Panthers, the Railroaders went on to down the Stockton Tigers for first place in the MCL Tournament. The Railers advanced to the Regionals by defeating Hoxie in the finals of the District Tournament. Marvin Honas, Duane Keller, and Art Niernberger were selected to the MCL first team.

\*DENOTES TOURNAMENT GAMES



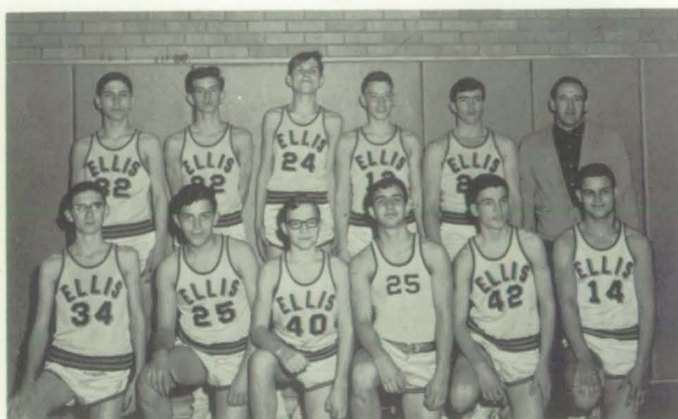


## *A-Squad*



ROW ONE--G. Cox, N. Mickelson, G. Bieker, D. Desmarteau, D. Keller, M. Honas, D. Weimer, B. King, ROW TWO--Coach Penquite, D. Powell, K. Smith, D. Smith, A. Niernberger, J. Scott, Coach Applebee.

## *B-Squad*

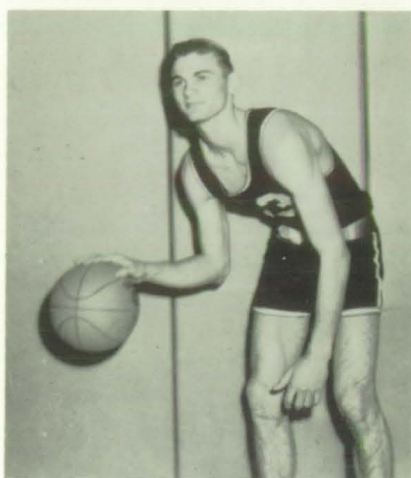


ROW ONE--T. Weber, E. Collins, E. Weimer, J. Deutscher, T. Zerfas, D. Wiesner, ROW TWO--S. Bittel, D. Borgeson, D. Kippes, N. Mickelson, Coach Applebee.

## *Freshmen*



ROW ONE--P. Wertz, R. Kreutzer, B. Helget, G. Deutscher, D. Kingsley, D. Wolf, ROW TWO--D. Weisner, G. Merrit, A. Nienberger, T. Zerfas, J. Deutscher, Coach Applebee.



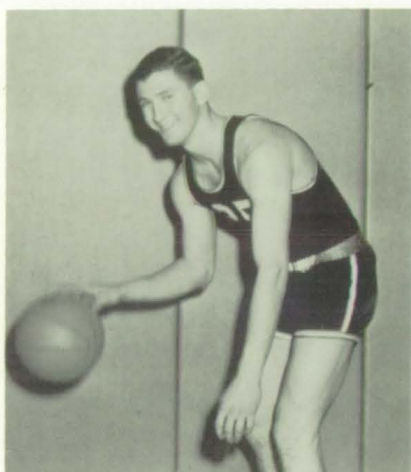
MARVIN HONAS

*The  
Leaders*

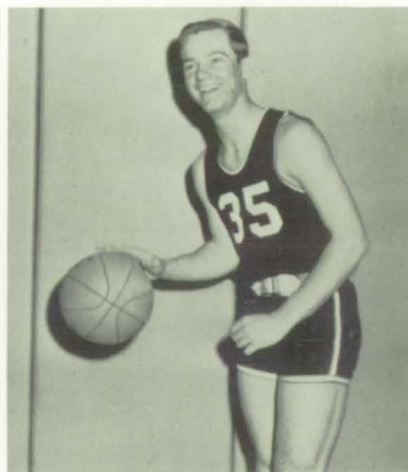


JIM SCOTT

DUANE KELLER



GERALD BIEKER



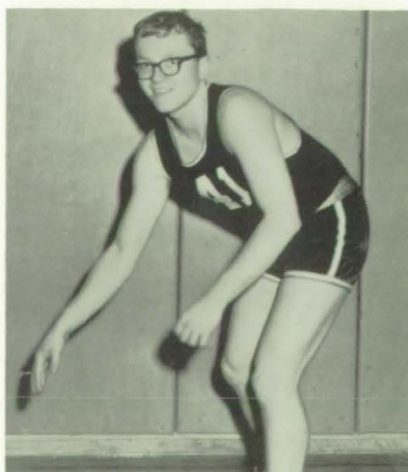
COACH PENQUITE



ART NIERNBERGER



DURYEA DESMARTEAU



*Sr.  
'65*



## Track



ROW ONE--B. King, A. Hays, J. Schoenthaler, G. Bieker, ROW TWO--C. Horner, D. Desmarteau, G. Cox, B. Ptasek, N. Michelson, J. Nicholson, J. Allen, D. Smith, D. Powell, K. Smith, G. Merserve, Coach Applebee.

## Freshmen



ROW ONE--T. Harris, J. Deutscher, D. Kutina, ROW TWO--D. Wiesner, B. Helget, P. Wertz, G. Merrit

## *Golf*



ROW ONE--B. Mallory, J. Bullard, B. Henderson, D. Desmarteau, R. Hamburg,  
ROW TWO--A. Niernburger, D. Borgeson, D. Kippes, J. Scott, A. Niernburger,  
Coach Penquite.

## *Tennis*



ROW ONE--E. Weimer, S. May, B. Waldschmidt, ROW TWO--Coach Robinson,  
M. Honas, G. Bieker, T. Weber.





# *ACTIVITIES*

# *South Pacific*

## *Junior-Senior Prom*



BACK ROW: David Wertz, Duane Desmarteau, David Smith, Dennis Powell, Don Weimer, and Jim Rupp. FRONT ROW: Benita Kuhn, Mary Lou Kingsley, Maxine Denning, Debbie Daily, Shyrell Vine, and Donna Weimer.

## *Servers*

Maxine Denning, Debbie Daily, Mary Lou Kingsley, Shyrell Vine, Benita Kuhn, Donna Weimer, and Mary Alice Fisher.

Jim Allen, Duane Desmarteau, David Smith, David Wertz, Jim Rupp, Dennis Powell, and Don Weimer.







David Smith, Jim Rupp, Dennis Powell, Duane Destmarteau, Don Weimer, and David Wertz.



Gary Niernberger, Jim Allen and Mary Alice Fisher.

The gang-plank of the U.S.S. Ellis marked the entrance to a tropical paradise where gaily decorated tables portrayed the theme "South Pacific." Servers escorted the guests to their places after presenting them with Hawaiian leis. The decoration scheme was carried out in green, yellow, brown, and orange crepe paper. Palm trees added to the tropical atmosphere. The stage setting for the program was an ocean scene. The menu included pineapple juice, Golden Glow salad, baked ham, scalloped potatoes, green beans, rolls, iced tea, pineapple sundae, and cookies. The program featured the servers in sailor uniforms. They sang and danced to numbers from the Broadway hit "South Pacific" including the theme song "Some Enchanted Evening."

After the banquet the music of Ted Smith and his orchestra added to making this prom the most successful one at Ellis High for many years.

"Nothing now is left but Majestic Memory." - - - Longfellow.

Art Niernberger takes time out to clown.



Gary Niernberger and Mary Alice Fisher.



Steve Bittel puts on a finishing touch.





The royalty reigned at the Homecoming Dance.

The '64 Homecoming game was with the Hill City Ringnecks. During a pre-game ceremony, the names of the Homecoming King and Queen, Glen Cox and Cheryl Schoenthaler, were announced. Attendants were Dennis Gabel, Duane Keller, Judy Younger, and Sally Steel. A dance following the game was sponsored by the junior class. Johnny and the Rebels furnished the music.

On the afternoon of October 30, the annual Homecoming parade was held. This year's theme was "Nursery Rhymes in Action." There was a tie for first place between the juniors and the seniors. Second place went to the sophomore class, and the F.F.A. took third.



The second place prize went to the sophomore class with "Mary had a little Lamb."



The F.F.A. took third place with Hickory Dickory Dock.

Sponsored by  
KELLER FURNITURE



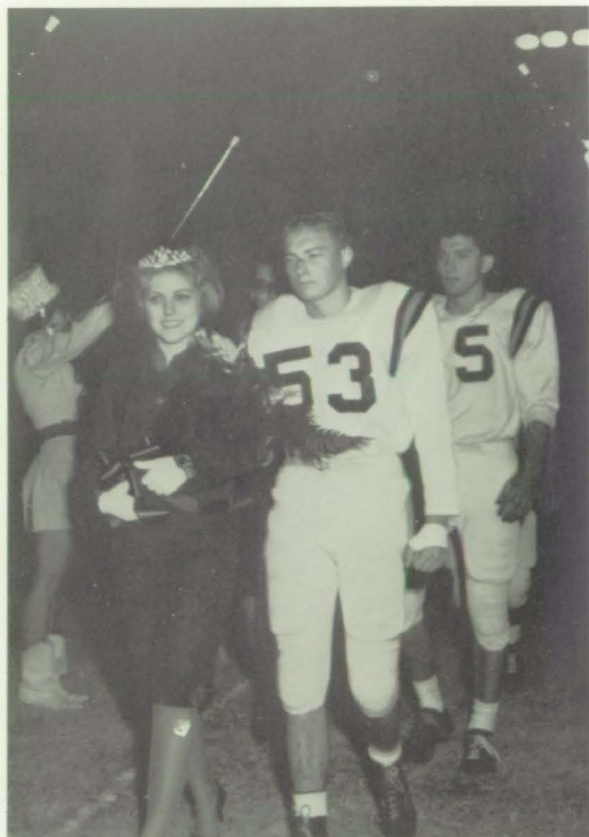


The seniors tied for first place with their float "Peter Punkin Eater."



The juniors' float "4 & 20" was the other first prize winner.

## *Homecoming '64*



King Glen and Queen Cheryl enter a heart formed by the band in the pre-game ceremony.

Attendant Judy Younger, Queen Cheryl Schoenthaler, Attendant Sally Steel. Flowerbearers Danen Sue Thomas and Warren Moos.



Sponsored by  
Seibel's



Liz Mackender, Patty Kutina, Chapter Sweetheart Debbie Daily, and Connie Huffman.

## *F.F.A. Barnwarmer*

The annual F.F.A. Barnwarmer was held on November 20 in the old gym. The gym was full of bales of hay which served as seats. During the dance the name of the Chapter Sweetheart, Debbie Daily, was announced by President Duane Keller. Her attendants were Liz Mackender, Connie Huffman, and Patty Kutina. Refreshments were apple cider and doughnuts.

Ronnie Luea congratulates Debbie



Chapter Sweetheart Debbie Daily





## *Snoball*



Reception line



The Dog!!!



Congratulating the Royalty.



Snoball '64



ROYALTY: Judy Younger, Queen Sherry Alloway, Aleta Schumm, Jane Mackender, Linda Jacques, and Carol Dreiling.

The theme of the '64 Snoball held on December 12, in the gym was "Pink Peppermint." The colors used in the decoration scheme were red, pink, and white. K's Kombo furnished the music.

SERVERS: Rhonda Wheeler, Phyllis Huffman, Paul-ette Weimer, and Connie Niernberger.







## *Sr. Play "Murder Takes the Veil"*

Trillium Pierce	- - - - -	Sally Steel
Crispin Archer	- - - - -	Bill King
Mr. Torvaldson	- - - - -	Jim Scott
Franz Eric	- - - - -	Dennis Gabel
Kathy Thatcher	- - - - -	Betty Mayes
Helen Perry	- - - - -	Pat Locker
Mary Elizabeth	- - - - -	Cindy Wheeler
Alison	- - - - -	Liz Mackender
Nerissa	- - - - -	Kathy Kneiling
Minna	- - - - -	Sherry Alloway
Mother Theodore	- - - - -	Judy Younger
Sister Osmond	- - - - -	Carol Dinkel
Sister Steven	- - - - -	Charlene Jones
Sister Raymond	- - - - -	Sybil Smith
Erminie Wagner	- - - - -	Connie Huffman
Mr. Perry	- - - - -	Cheryl Schoenthaler
Mrs. Perry	- - - - -	Duane Keller
Rindy	- - - - -	Aleta Schumm
Jarvis Thatcher	- - - - -	Steve Bittel
Hy Muckleroy	- - - - -	Jerry Lang
Glory	- - - - -	Lue Ann Snider
Theophilus Burns	- - - - -	Charles Horner
Pete	- - - - -	Art Niernberger

PLACE: The lobby of the College of St. Aurelien, in the swamp country of Louisiana.

TIME: The present.

MR. HARRY MOOS - Director







Flippy and Pudgy



M. Rene



Annabelle and  
Zachary

## *"It Happens Every Summer"*

Lucy Jennings Woodruff - - - Karen Kroeger  
Gretchen Dana - - - - - Jo Ann Lang  
Larae Donahue - - - - - Maxine Denning  
Marge Powell - - - - - Carla Vonfeldt  
Gert - - - - - Cynthia Engstrand  
Jennifer Truex - - - - - Debbie Daily  
Flippy Wonder - - - - - Benita Kuhn  
Annabelle Ames - - - - Mary Lou Kingsley  
M. K. Roberts - - - - - Beverly Matteson  
Andrea Matlins - - - - - Judy Nelson  
Olga Stone - - - - - Patty Kutina  
Bitsy Stelling - - - - - Mary Alice Fisher

Charity Barnes - - - - - Shyrell Vine  
Tod Colbert - - - - - Jim Allen  
Pudgy Roulette - - - - Gary Niemberger  
Zachary Bryan - - - - - Dave Smith  
Kenyon McClinton - - - - Alan Klusener  
C. M. DiGiacomo - - - - Jack Nicholson  
C. G. Oglethorpe - - - - C. Clotfelter  
Barnard Sands - - - - - Tom Pearson  
Rocco - - - - - Gary Meserve  
M. Rene - - - - - Glen Keller  
Perc - - - - - Bernie Ptaschek

The Cast



It Happens Every Summer?

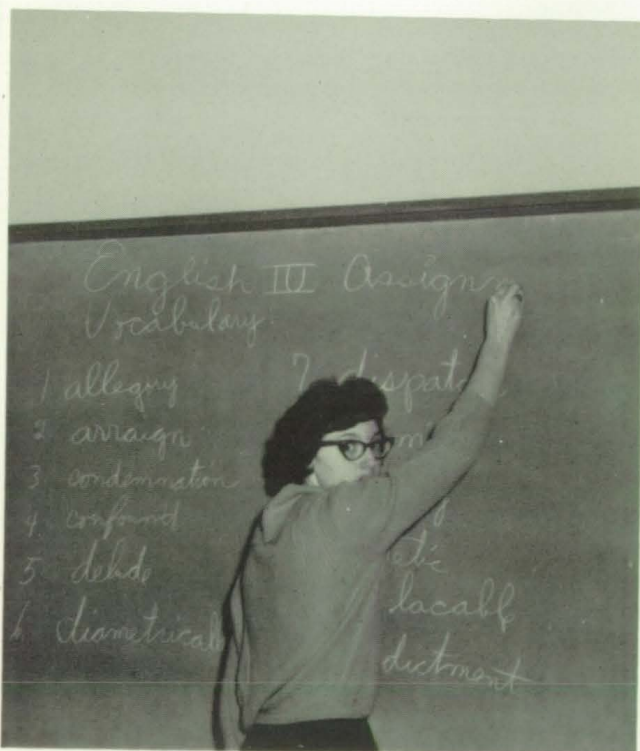




WE SHALL BE. . .  
TRUSTWORTHY. . .



HONORABLE. . .



LEADERS. . .

THEY CONQUER WHO  
BELIEVE THEY CAN.

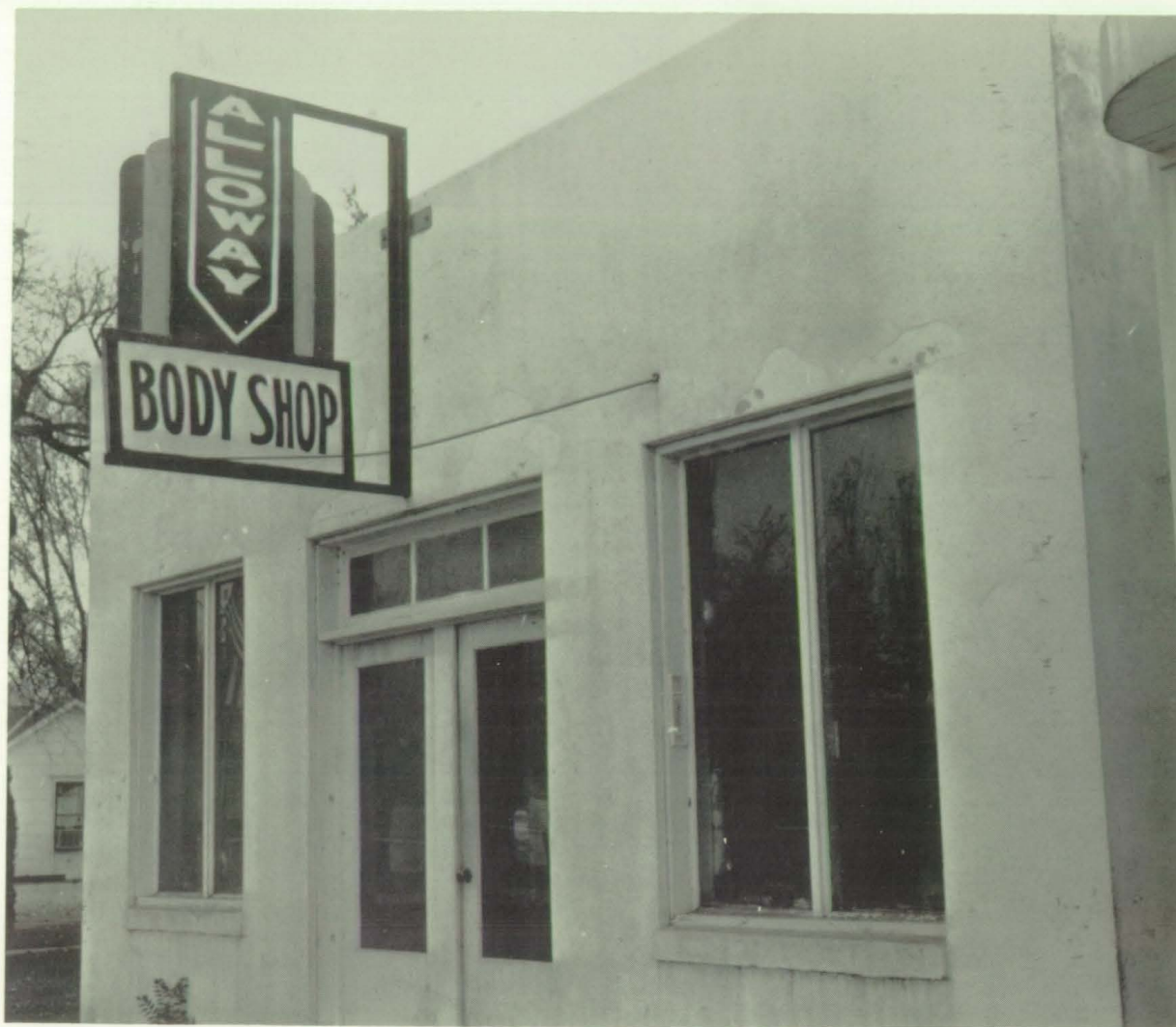
Sponsored by

**GAMBLES'**





*ADVERTISERS*



If your bumper has a bump in it, or  
your windshield has a crack in it go  
to Alloway's Repair Shop for quick repair  
on Highway 40 East, or phone 726-4272.

\* \* \* \* \*

For the best in the West, or the  
East, or the rest---stop in at

**ALLOWAY'S DAIRY KREME**

on Highway

40 West or phone 726-3188.





## FISCHGRABE STUDIO

Family Groups - Weddings  
Baby Photos - Frames

Quality Photos in Ellis  
for More Than 25 Years.

Here one of the Seniors  
makes a selection of frames  
for her senior pictures.

## WHEELER APPLIANCE

Frigidaire - Maytag  
R.C.A. - Fedders  
Channel Master

Sales and Service

Ellis, Kansas



## MILLER'S IGA

Top Quality Food

Bargain Prices

Fast, Courteous  
Service

The friendly  
grocery store  
in Ellis, Kansas



See the U. S. A. in  
your Chevrolet,  
"ZEALAND" is  
asking you to call.

FONDOBLE'S  
CHEVROLET AND  
OLDSMOBILE SALES  
AND SERVICE at  
815 Jefferson  
Phone 726-3141



A wide selection of food,  
friendly clerks, and prompt  
service and delivery are what  
you expect and get at

**WEISNER'S GROCERY.**

815 Washington - Ph. 726-3167



**GOLDEN BELT  
CO-OP ASSN., INC.**

Grain - Feed - Paint  
Lumber and Building Materials  
"call today"

Phone: Office 726-3115  
Ellis, Kansas





# THE ELLIS STATE BANK



Complete Banking Service

ESTABLISHED 1899

ELLIS, KANSAS



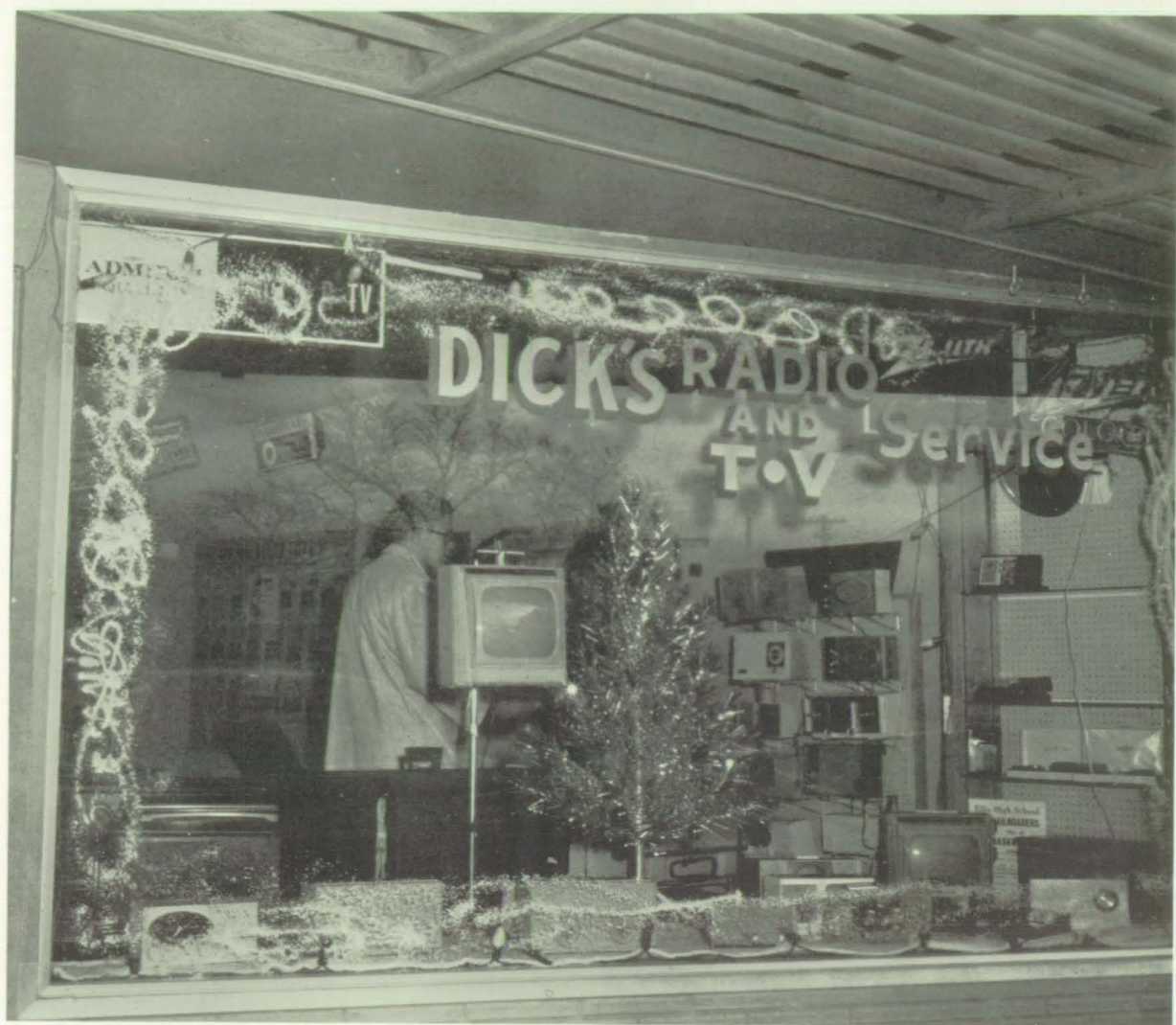
For everything from cosmetics to dog collars, shop at

**STETZ'S 5 & 10**

prompt and friendly  
service

all your gift needs





When your T.V. goes on the blink,  
Don't fret and stew,  
Go to Dick's little store and he'll,  
Be sure to help you.  
When your radio stops playing,  
And the battery goes dead-,  
Let Dick do the job and keep a cool head.

## **DICK'S RADIO AND T.V. SERVICE**

1005 Washington

Phone 726-3267





## NICHOLSON LUMBER YARD

Established 1878  
Building Materials  
Home Supplies

Phone 726-4563  
Ellis, Kansas

## MUSIC MANOR

"all your musical needs"  
Top Quality Instruments  
Known Brand Names

Hays, Kansas



WILLIAM E. HENDERSON  
REPRESENTING  
*Mutual OF OMAHA - United OF OMAHA*

1612 E. IRON ST.  
SALINA, KANSAS

BOX 112  
ELLIS, KANSAS  
PHONE 726-4871

## ADVERTISING

### FULL PAGE AD

Alloway's Dairy Kreme

Alloway's Body Shop

Dick's Radio & TV

### HALF PAGE AD

Fondoble Chevrolet Sales

Mutual of Omaha Ins.

Ed Henderson, Agent

Miller's IGA

Ellis State Bank

### FOURTH PAGE AD

Nicholson Bros. Lumber Co.

Wiesner's Grocery

Wheeler Appliance

Fischgrabe Studio

Stetz's 5 & 10

Music Manor

Golden Belt Co-op Assn.

### FULL PAGE SPONSORSHIP

Seible's Shoes and Sportswear

Central Kansas Power Co.

Max Cleaners

Keller Furniture

Snider Electric

Vic Hubb's Ins.

Ellis Plumbing & Heating

Wolf Monuments

Johnson's Funeral Chapel

Maries Cafe

Bartell's Ford Sales

Ellis Review

Gambles

Jade Cleaners

Robert's Grocery

### BOOSTER PAGE AD

Town & Country

James J. Schuster

Steel's Barber Shop

C. W. Deutscher Ins.

Harold's Menswear

Gabel Barber Shop

Geyer's Drug Store

Jack Ball Ins.

Wiesner's Dry Goods

Clarence Honas - Plastering

Art Honas Heating & Metal

Geschwentner Jewelry

Wm. Honas Ins.

City Cafe

Webb's Service Station

Blue Star Motel

Douglas Phillips 66





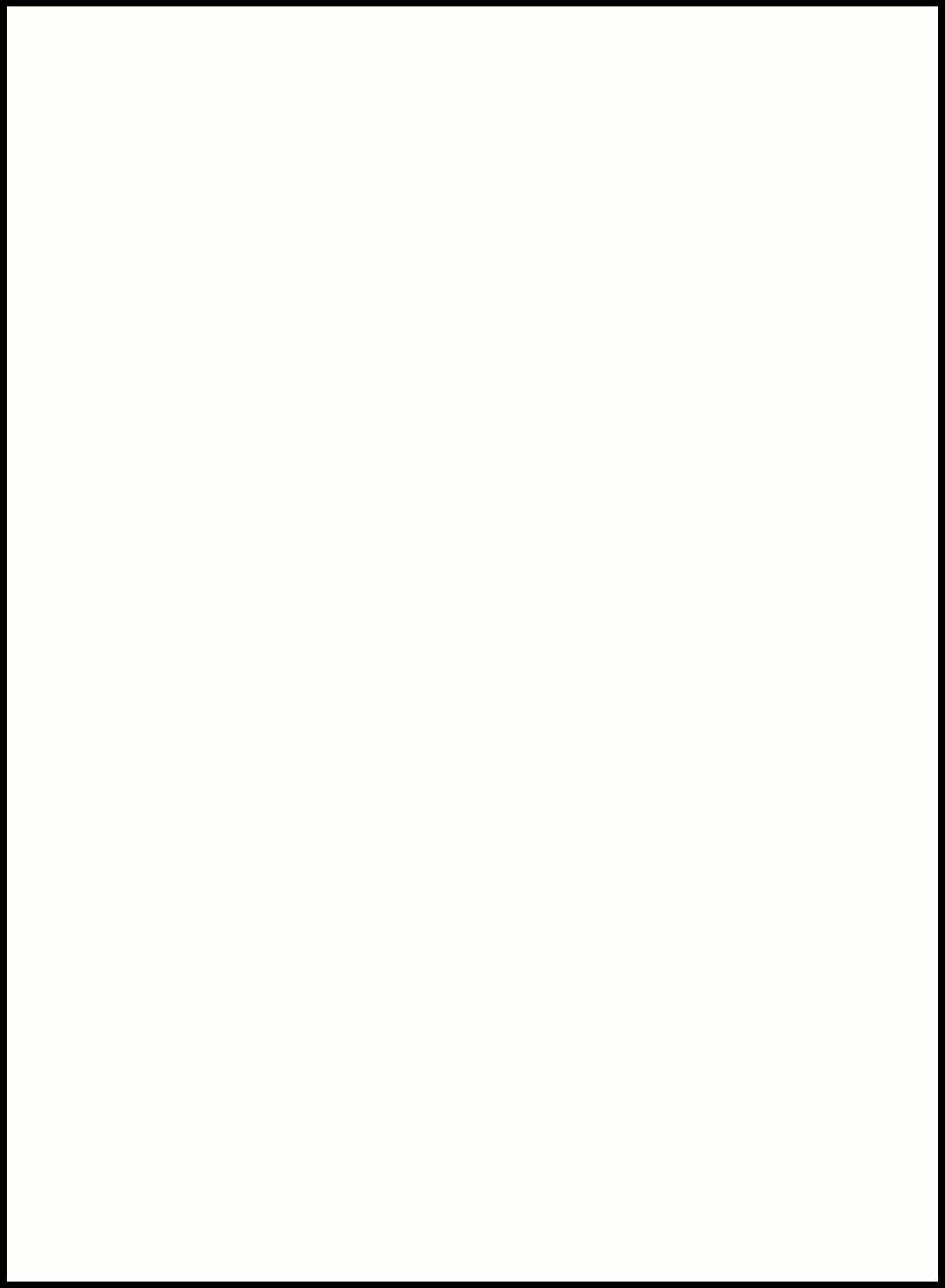


















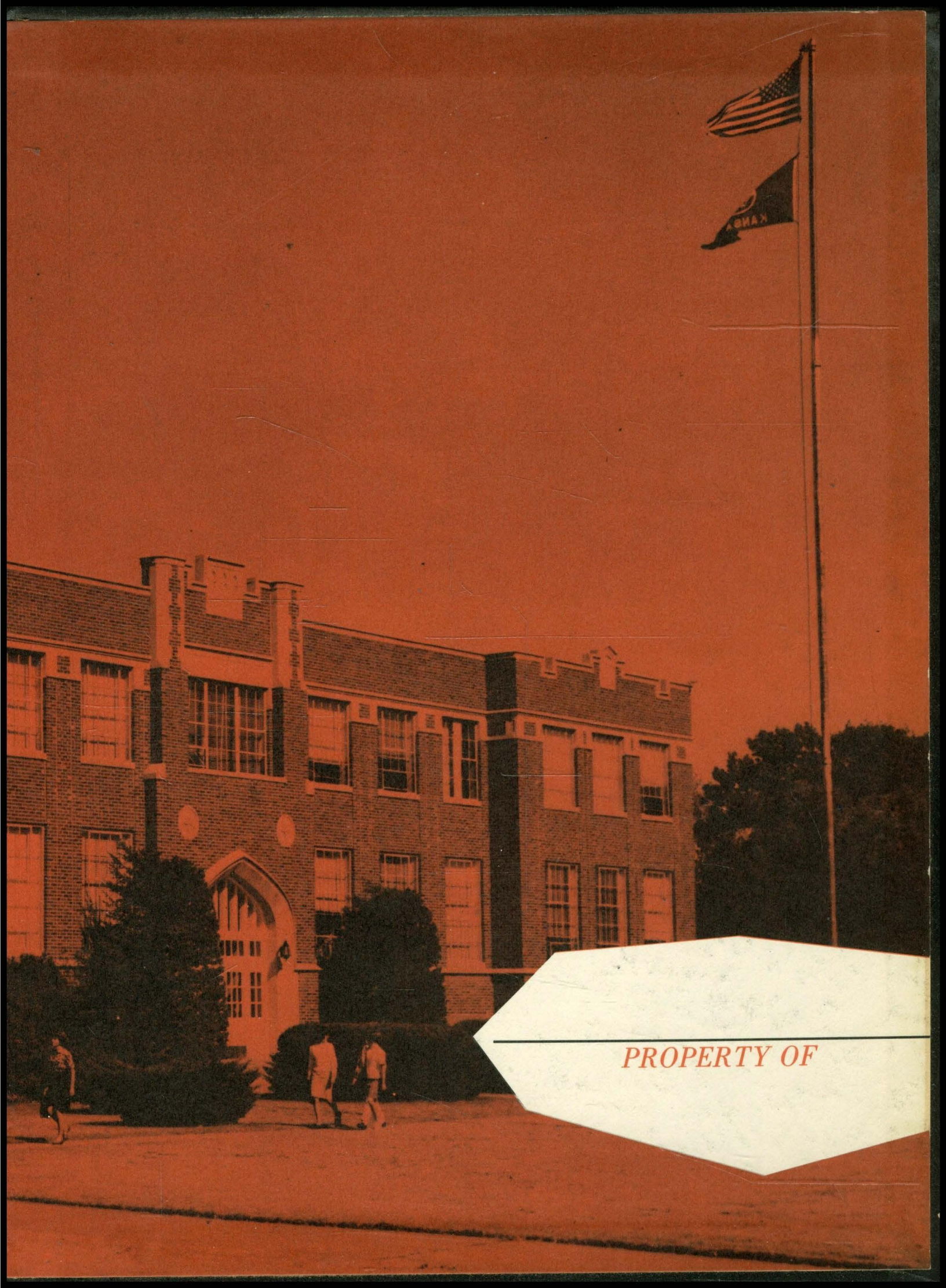












*PROPERTY OF*



