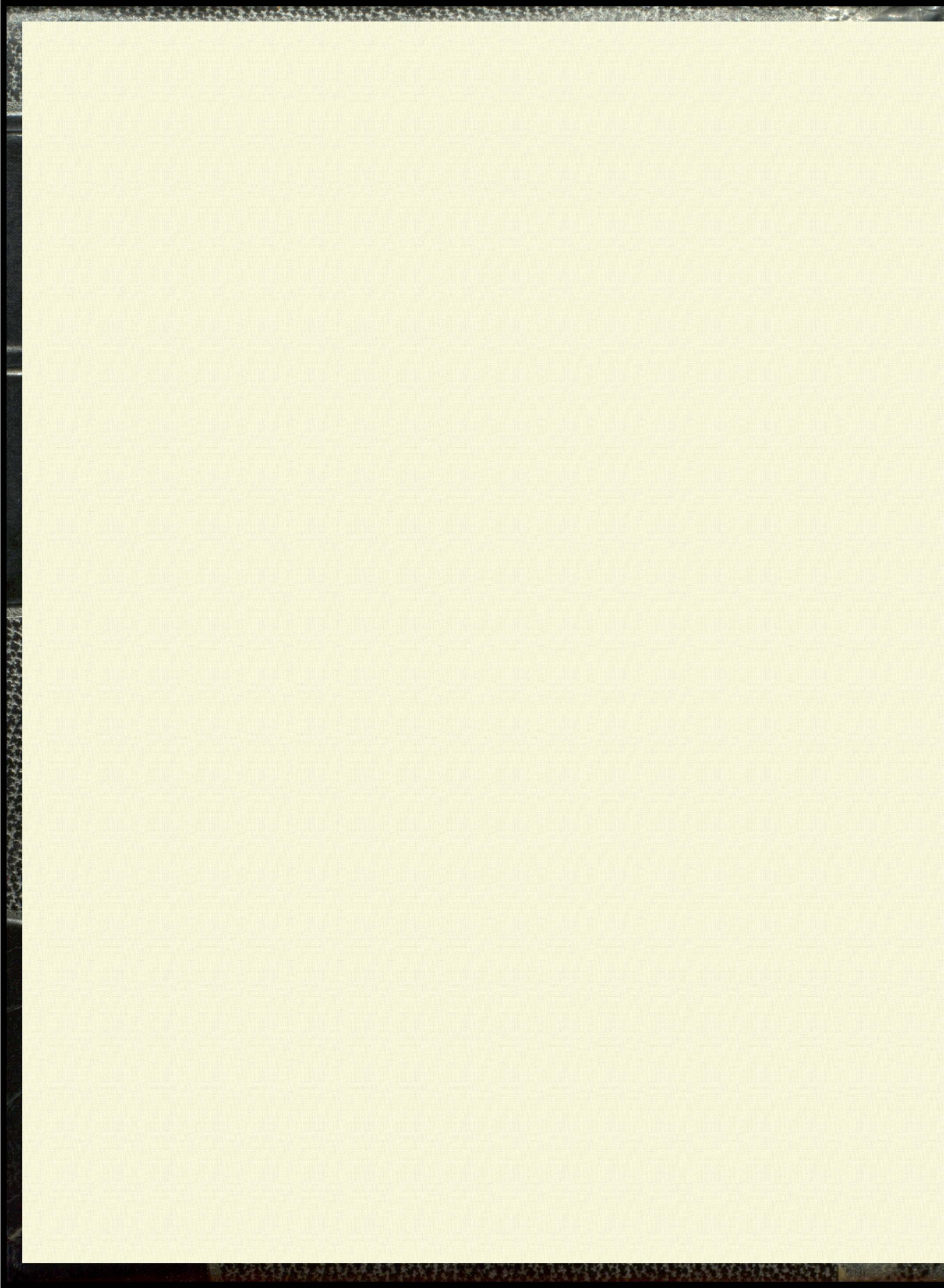
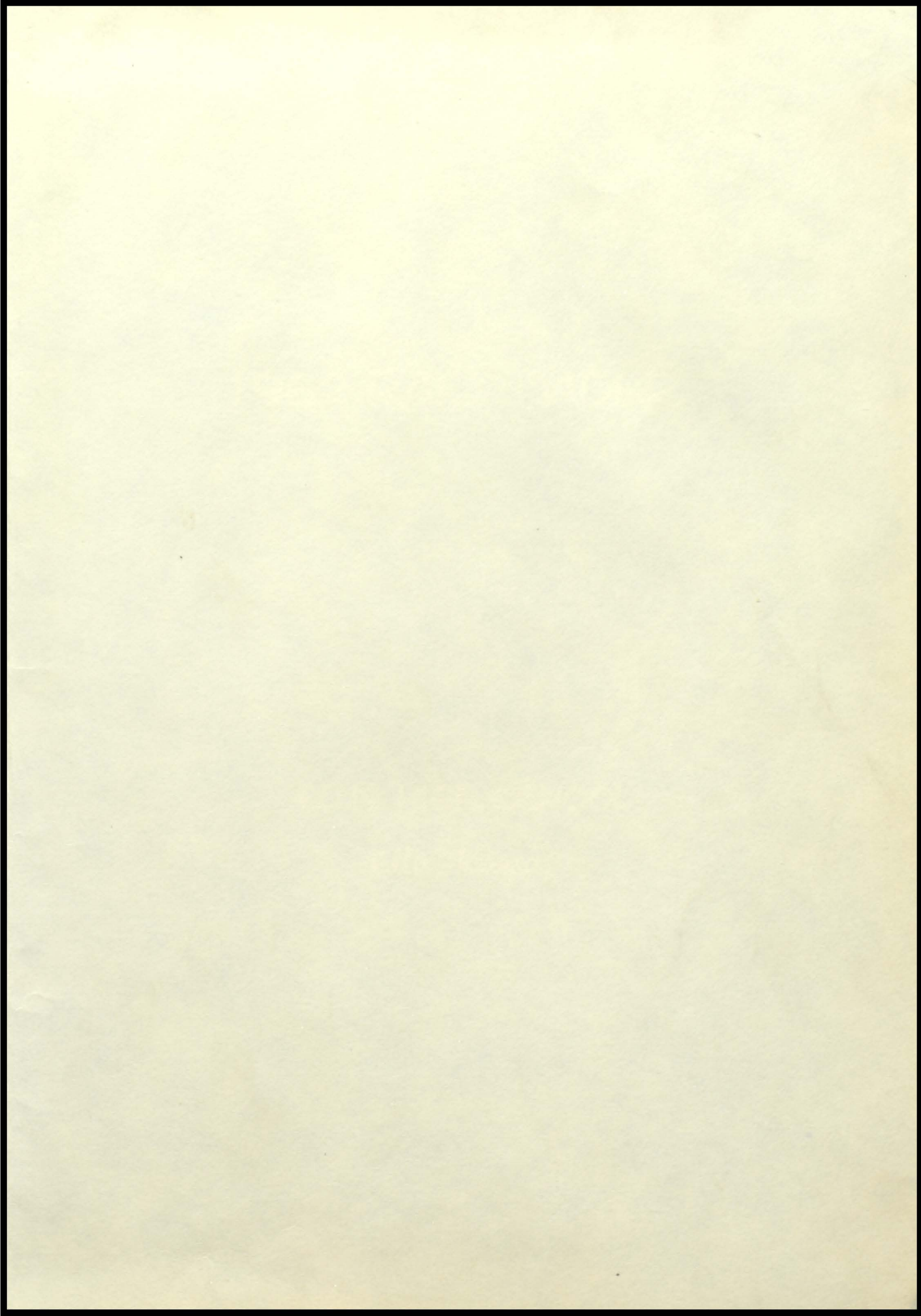
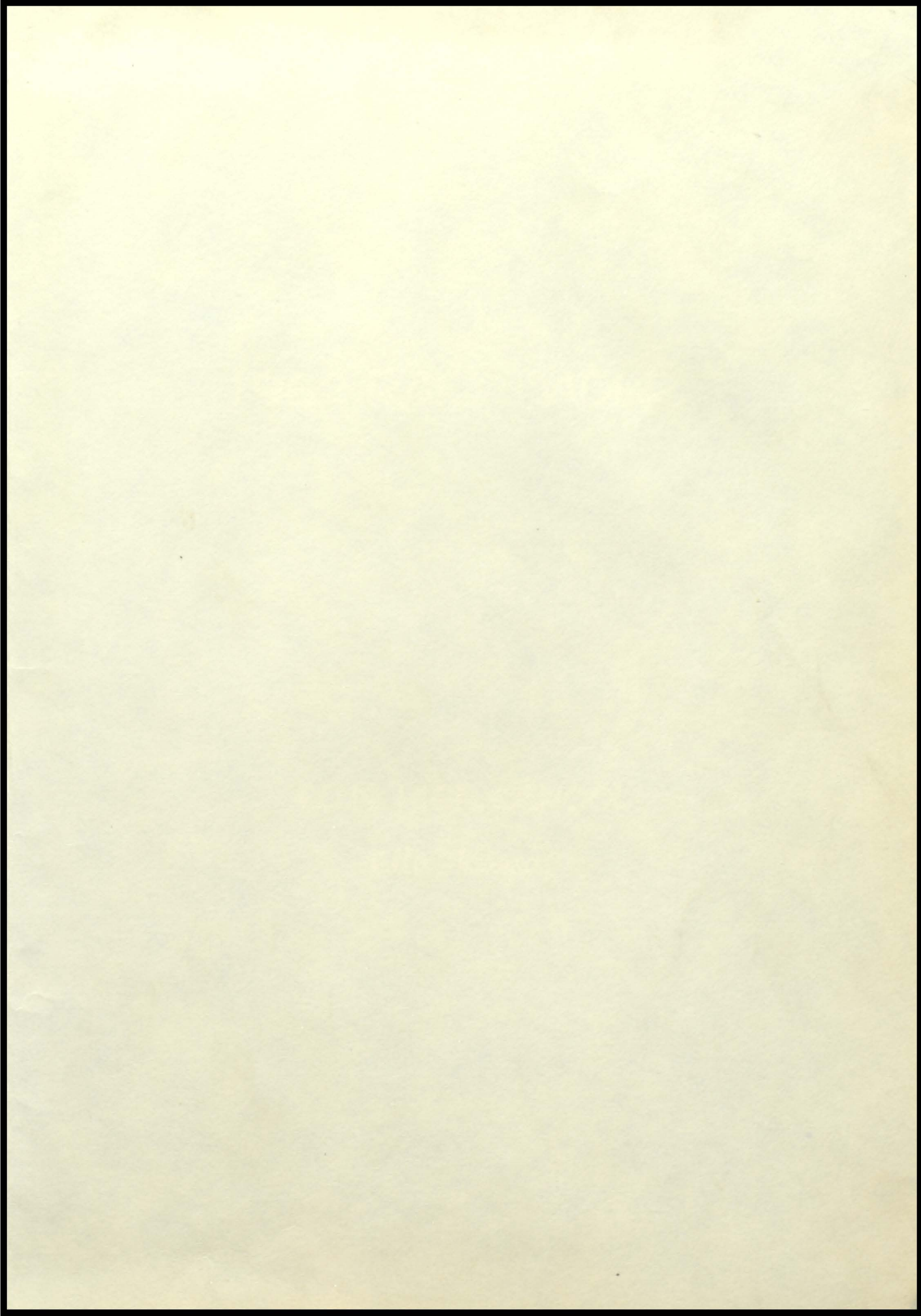


RAILROADER











1962 RAILROADER

ELLIS HIGH SCHOOL

Ellis, Kansas

EDITORS

Joy Kellogg
Cynthia Bittel

BUSINESS MANAGER

Allaire Homburg

PHOTOGRAPHERS

Jack Balcombe
Dick Ridgway

SPONSOR

Mrs. Lillard

PAGE EDITORS

Ann Kohl
Rose Ann Lang
Elgerine Weigel

Robert Schmidt
Kathy Hamburg
Jean Riffel

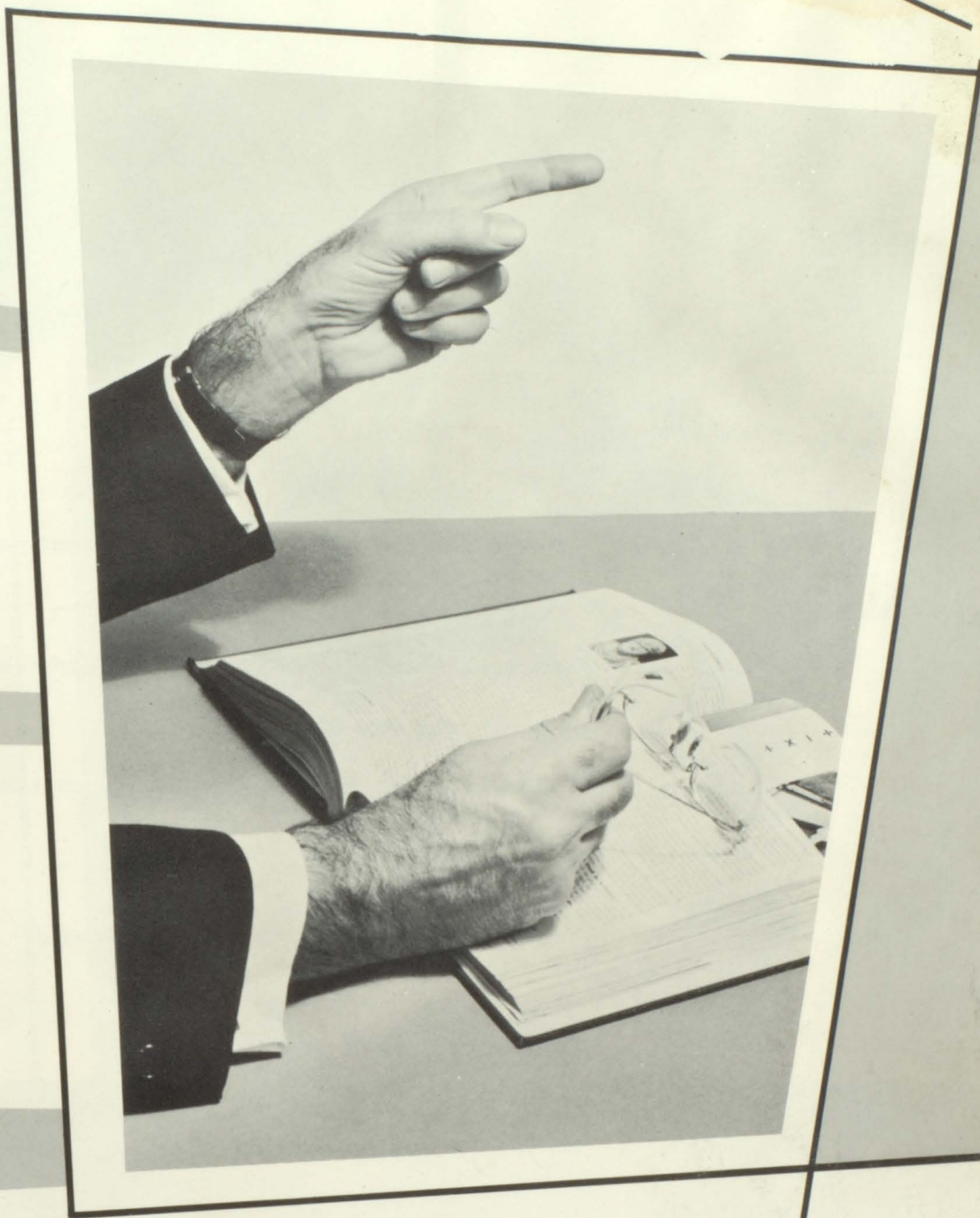
Olivia Snider

Dedicated to:



Dr. G. A. Surface

School Board President



ADMINISTRATION



E. A. FITZGERALD
Superintendent



GEORGE E. BRAY
Principal

QUO VADIS?

Where will you be in 1972? You and only you hold the answer to this important question.

You can turn to parents, teachers, and friends. You can seek the wisdom of the ages through books, art, and prayer, but the choice rests with you.

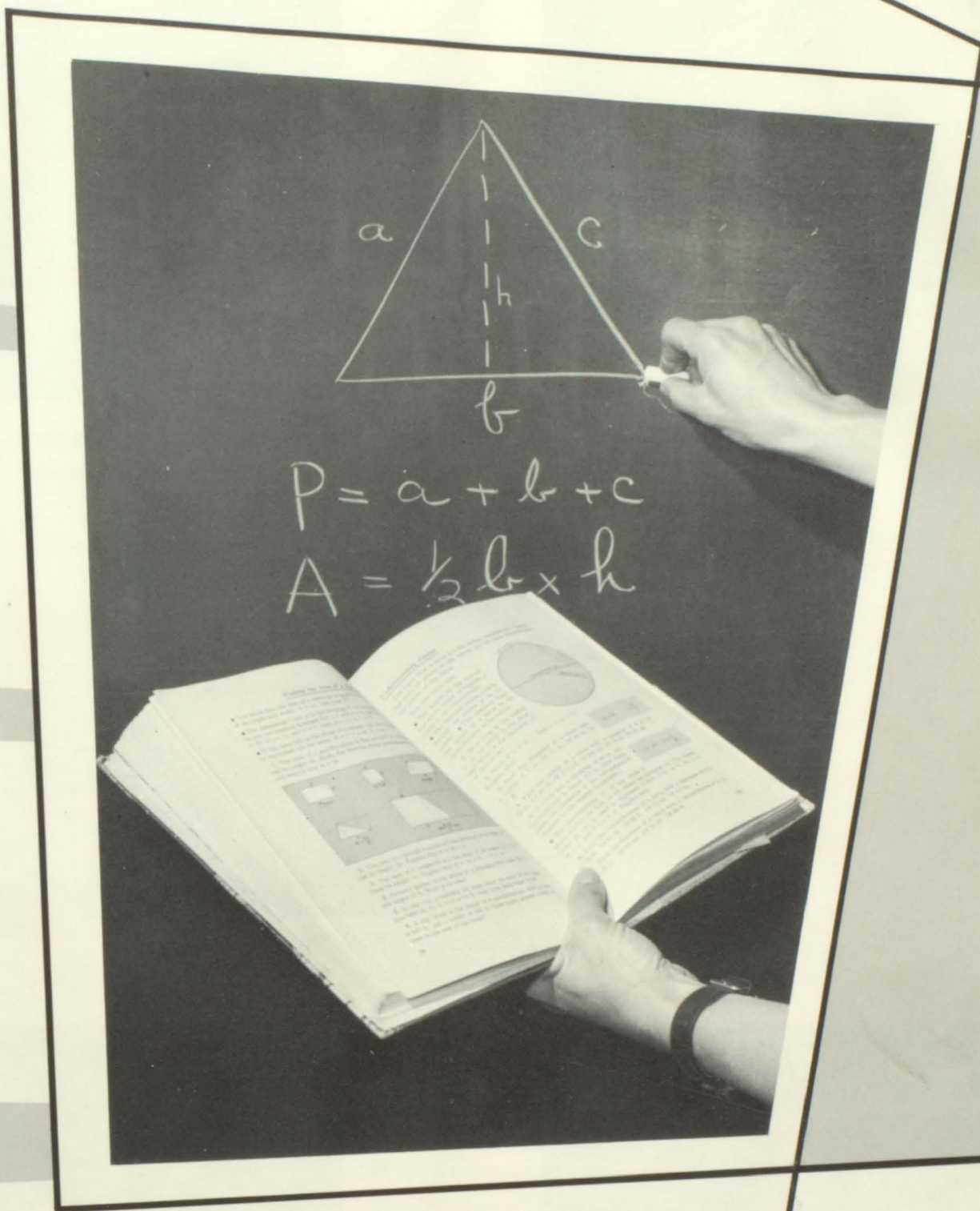
Your school offers you the invitation to make use of all its resources together with your most earnest thinking in order to insure a useful satisfying life.

oOo

E. A. Fitzgerald

SCHOOL BOARD

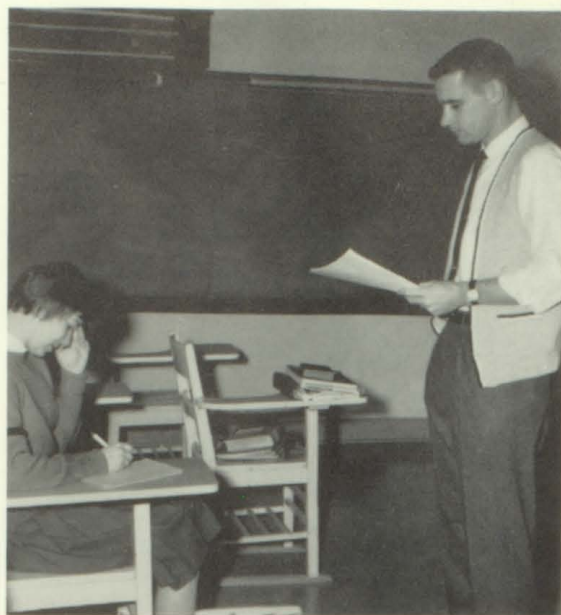




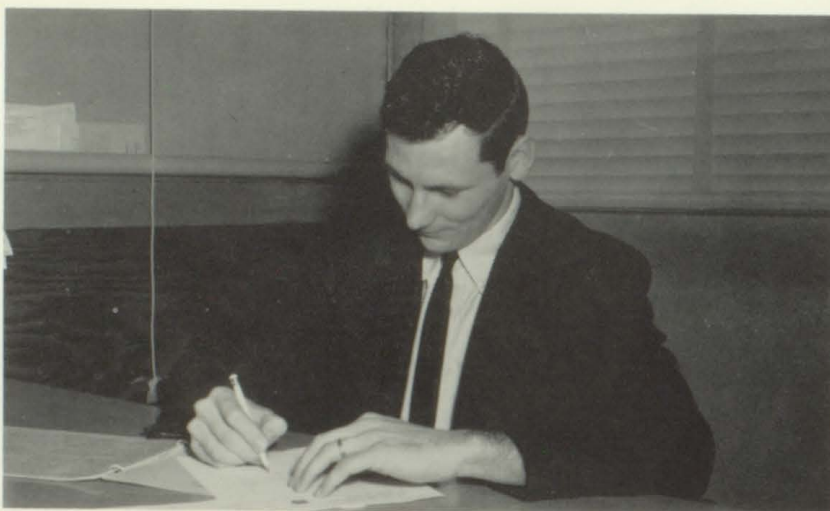
FACULTY



MRS. DORIS QUENZER
Commerce



JAMES L. PARKER
Social Science



LESTER J. KNOLL
Guidance



MISS FRANCES STAMPER
Vocational Homemaking



MISS JEANNE JAMES
Art



JIMMY D. MARTIN
Manual Arts



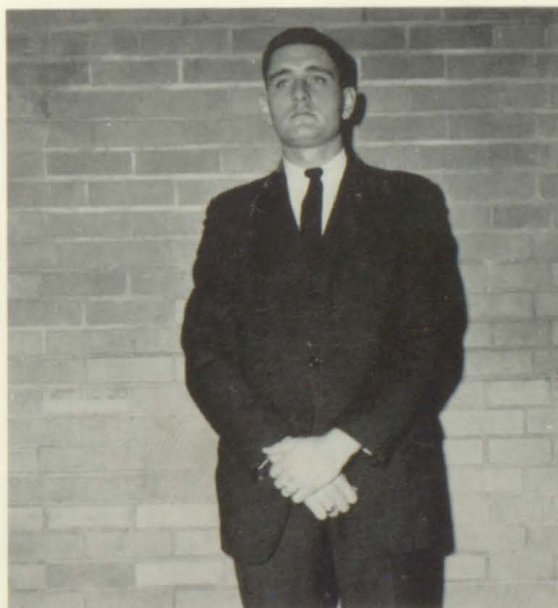
ROBERT M. SCHNEIDER
Vocational Agriculture



MRS. DONNA LILLARD
English



RICHARD A. WEAVER
Speech and English



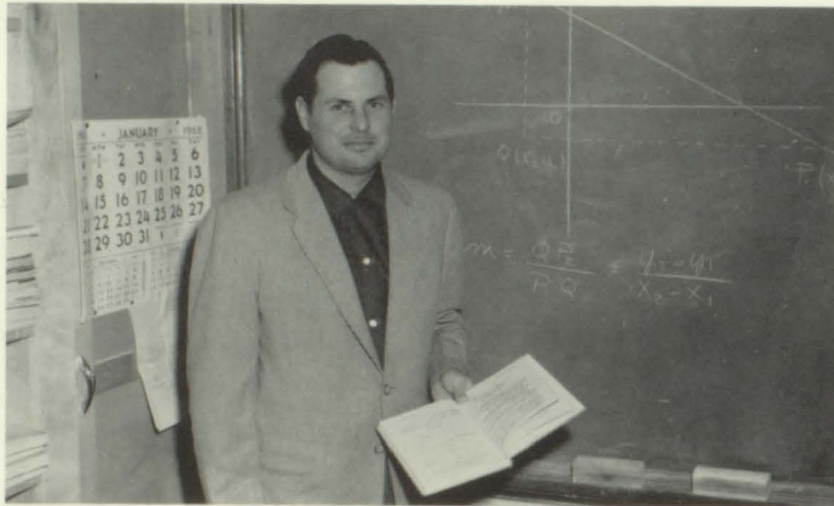
GLEN C. LONG
Basketball and Science



MISS PEGGY EPPS
English and Phys. Ed.



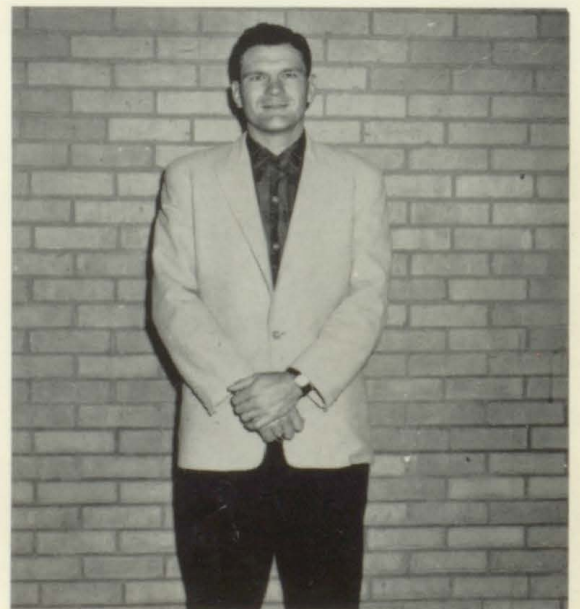
DEROY L. ROGGE
Music



ARLIN E. MILLS
Mathematics and Science



MRS. ALICE BALCOMBE
Language



JAMES C. STANSBURY
Football and Phys. Ed.



MRS. ROBERTSON
Special Education



MR. JOE CURCHY
Mathematics



MISS KAYLOR
Commerce



KITCHEN STAFF:
Mrs. Fondoble; Mrs. O'Rourke; Mrs. Wolf.



School Secretary
MARGE WEISNER



Open a savings account at the ELLIS STATE BANK.

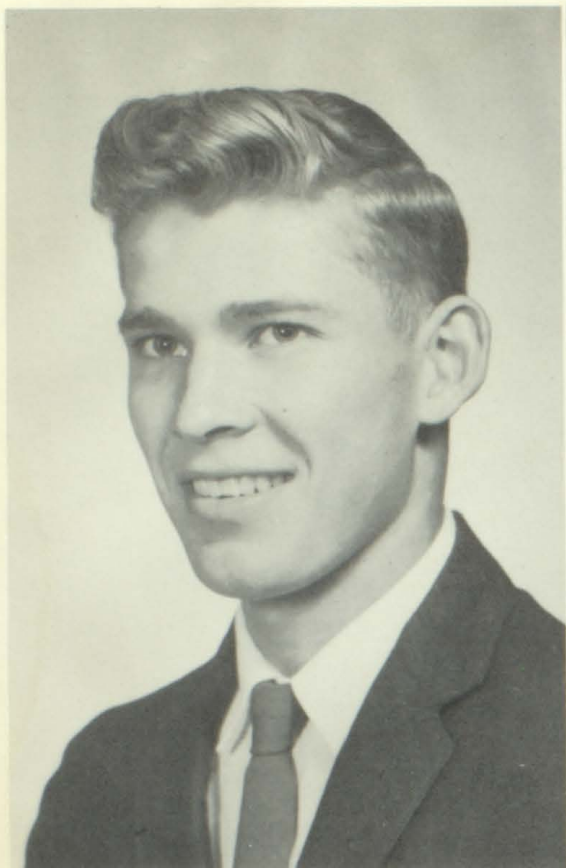
At MILLER'S IGA in Ellis you'll find good

Stop at JADE CLEANERS in Ellis for efficient cleaning service.





SENIORS



ROBERT SCHMIDT

Class President 1,4; Junior Play; Homecoming Attendant 4; Prom Server 2; Newspaper Staff 4; Yearbook Staff 4; Kay Board of Directors 4; Lettered in Football 2,3,4; Lettered in Basketball 3,4; Lettered in Track 1,2,3,4.



ANN KOHL

Class Secretary 3,4; Speech Play 2; Junior Kayettes 1; Senior Kayettes 2,3,4; Pep Club 1,2,3,4; Girls' Chorus 1,2; Newspaper Staff 4; Yearbook Staff 4; Intramural Volleyball 2; Gymnastic Award 2; Volleyball Team 2; Office Assistant 4; Plainville Scholarship Test 3.

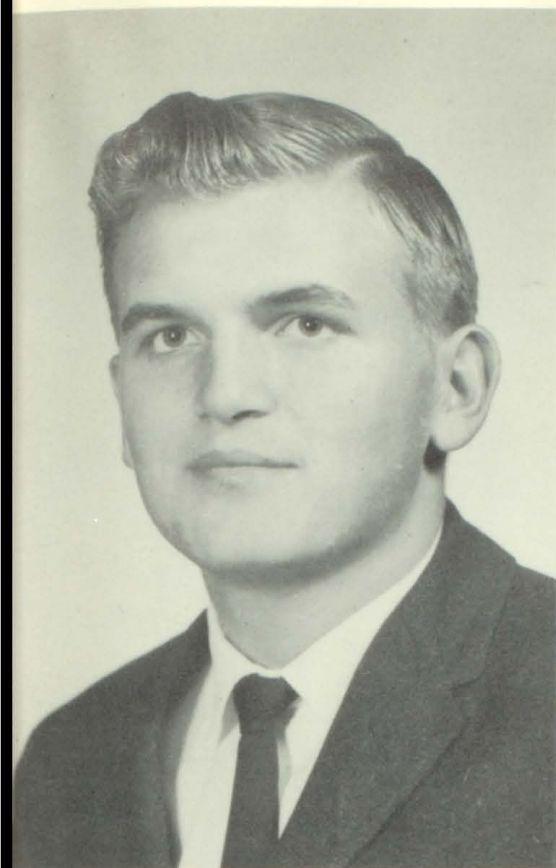
CYNTHIA BITTEL

Class Treasurer 4; Junior Play 3; Junior Kayettes 1; Senior Kayettes 3,4; Kayette Cabinet 3; Pep Club 1,2,3,4; Girls' Chorus 1,2,3; Snowball Server 1; Yearbook Editor 4; Leadership Award 3; Plainville Scholarship Tests 1,2,3; Award in Psychology and Sociology; Kayette Delegate 3; Gymnastic Award 2.

DON COX

Class Vice President 4; Prom Server 2; Kays 3,4; Newspaper Staff 4; Football 3,4; Track 2; Basketball 3; Lettered in Football 4; Yearbook Staff 4; Tennis 3,4; Lettered in Tennis 3,4; Transfer 2; El Dorado, Kansas.





ALVIN ARMBRISTER

Pep Club 3; FFA 1, 2, 3; Basketball 1, 2, 3.



MARY ANN AUGUSTINE

Senior Kayettes 3, 4; Girls' Chorus 1.

NANCY BRAY

Head Cheerleader 4; Prom Server 2; Newspaper Staff 4; Yearbook Staff 4; Girls' State 3; Debate 3; Library 1, 2; Dramatics Club 4; Pep Club Treasurer 3; Outstanding Speech Student 3; Student Council Rep. 1; Play Oscar 1, 3; Junior Play; Speech Contest 1, 2, 3; Kayettes 1, 2, 3, 4; Kayette Cabinet 1, 2, 3; Pep Club 1, 2, 3, 4; Cheerleader 3, 4; Band 1, 2, 3, 4; Pep Band 1, 2, 3; Dance Band 3, 4; Orange and Black Chorale 1, 2, 3, 4; Music Contest 1, 2; Major-ette 1, 2, 3; Pep Club President 3.



RONALD ARMBRUSTER

Pep Club 2; Band 1, 2; Kays 3, 4; Football 3, 4; Basketball 1, 2; Lettered in Football 3, 4; FFA 1, 2; Secretary of FFA 3.





JIM ARMENTROUT

Kays 3, 4; Football 1, 2, 3, 4; Basketball 1, 2, 3; Track 1, 2, 3, 4; Lettered in Football 4; Lettered in Track 4; Transferred from Trego Community High School 2.



BARBARA BROWN

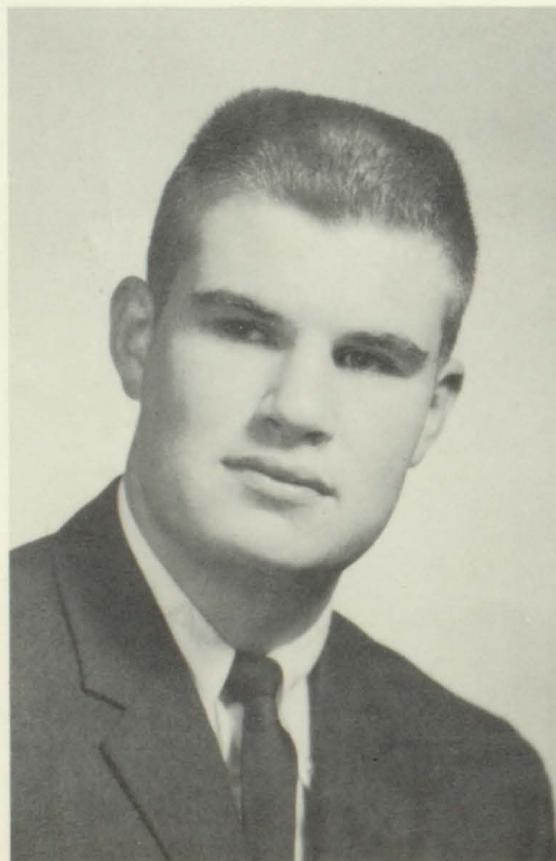
Junior Kayettes 1; Senior Kayettes 2, 3, 4; Girls' Chorus 3.

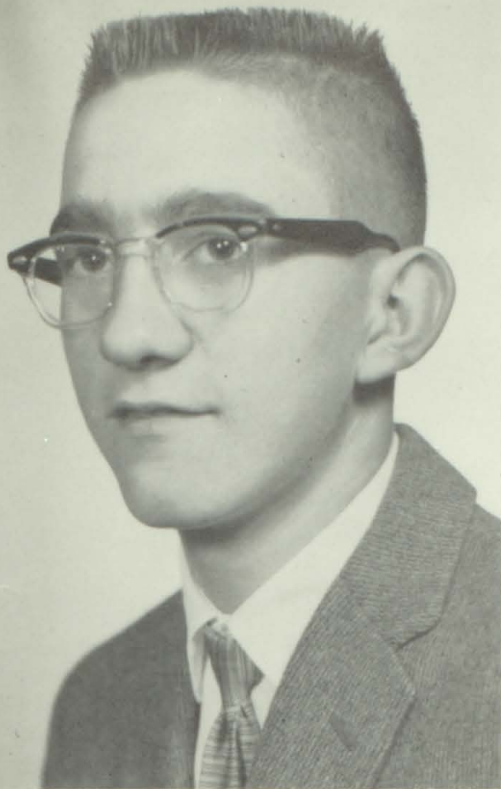
BEULAH FISCHER

Junior Kayettes 1; Senior Kayettes 2, 3, 4; Pep Club 1, 2, 3, 4; Cheerleader 4; Homecoming Queen 4; Snowball Server 1; Prom Server 2; Newspaper Staff 4; Yearbook Staff 4; Intramural Volleyball 2; Twirp Week Attendant 1, 2.

JACK BALCOMBE

Vice President 2; Student Council Representative 1, 3; President of Student Council 4; Junior Play; Senior Play; Speech Contest 1, 2, 3, 4; Contest Play 3, 4; Yearbook Photographer 4; Newspaper Staff 4; Kays 2, 3, 4; Treasurer of Kays 3; Kay Board of Director 2, 3; Football 1, 2, 3; Basketball 1, 2; Boys' State 3; Debate 3; Plainville Test 1, 2, 3, 4; Dramatic Club 4; Semi-Final Merit 4; Speech Award 1.





ALFRED BOLLIG

Kays 1, 2, 3, 4; Basketball 1, 2, 3;
Track 1, 2; Basketball Manager 4;
Golf 3, 4; Lettered in Golf 3, 4.



HELEN GESCHWENTNER

Junior Kayettes 1; Senior Kayettes 2, 3, 4; Girls' Chorus 2.

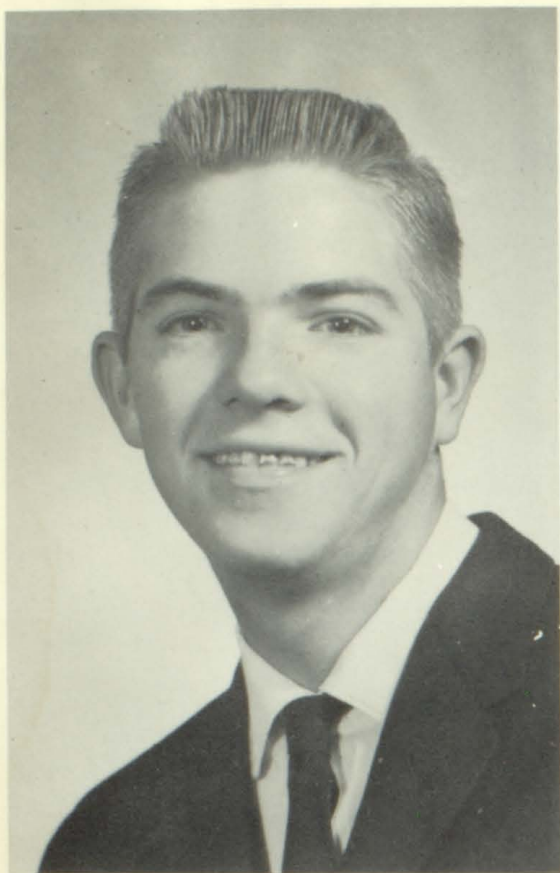
KATHY HAMBURG

Class Treasurer 2; Junior Play;
Speech Contest 1; Junior Kayettes
1; President 1; Senior Kayettes 2, 3,
4; Kayette Vice President 3, 4; Pep
Club 1, 2, 3, 4; Chorale 2, 3, 4; Spe-
cial Chorus 3, 4; Girls' Chorus 1, 2,
3, 4; Snowball Attendant 4; Prom
Server 2; Newspaper Staff 4; Best
Homemaking Student Award 2.

GARRY CRAWFORD

Kays 4; Transfer 3: Stafford,
Kansas.





EDWIN DORZWEILER

Newspaper Staff 4; Kays 2, 3, 4; Basketball 1, 2, 3, 4; Track 1, 2; Lettered in Basketball 1, 2, 3, 4; Football Manager 4; Golf 3, 4; Lettered in Golf 3, 4.



GLORIA HELGET

Student Council Representative 1, 2; Junior Play; Kayettes 1, 2, 3, 4; Kayette Cabinet 3, 4; Chorale 3, 4; Special Chorus 3, 4; Girls' Chorus 1, 2, 3, 4; Homecoming Attendant 4; Snowball Server 1; Prom Server 2; Newspaper Staff 4; Yearbook Staff 4.

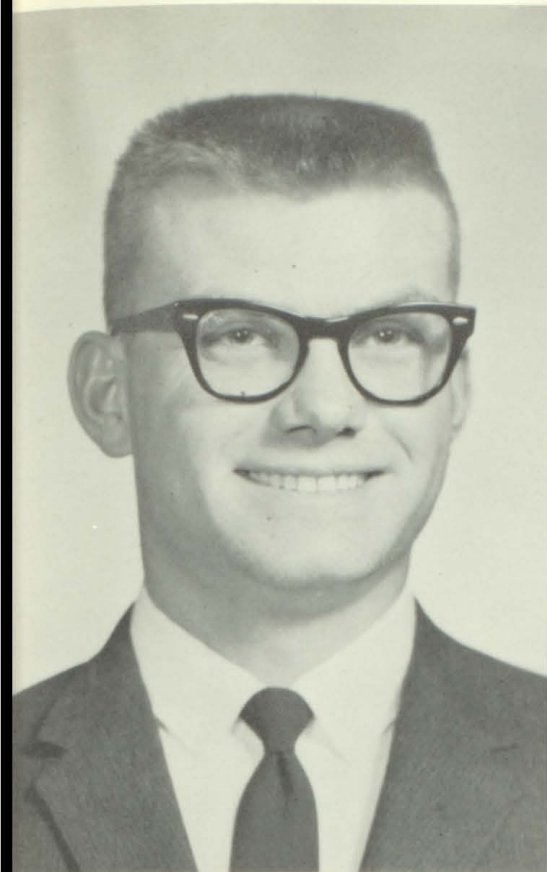
JUDY HELGET

Junior Kayettes 1; Senior Kayettes 2, 3, 4; Pep Club 1, 2, 3, 4; Cheerleader 1, 4; Head Cheerleader 1; Girls' Chorus 1, 2, 3, 4; Prom Server 2; Office Assistant 4; Library Assistant 1, 2.

EDWARD DINKEL

Chorale 4; Boys' Chorus 2; Kays 2, 3, 4; FFA 2, 3.





VERLIN ENGEL

Class Vice President 1; Junior Play 3; Kays 1, 2, 3, 4; Kays Secretary 4; Track 3; FFA 1, 2, 3; Debate 1; FFA Sentinel 1, 2, 3; Boys' Chorus 4; Special Chorus 4; Newspaper Staff 4; Orange and Black Chorale 4.

MARCO

Junior Kayettes 1; Senior Kayettes 2, 3, 4; Pep Club 1, 2, 4.

BRUCE FELDKAMP

Student Council Rep. 2, 3; Student Council Vice Pres. 4; Junior 3; Senior Play 4; Speech Play 3, 4; Band 1, 2, 3; Dance Band 2, 3; Pep Band 1, 2, 3; Orange and Black Chorale 1, 2, 3, 4; Boys' Chorus 1, 2; Special 2, 3; Prom Server 2; Newspaper Staff 4; Kays 1, 2, 3; Track 1; Tennis 2, 3, 4; Lettered in Tennis 3, 4; Kays Treasurer 1; Football 2, 3, 4; Lettered in Football 4; Basketball 1, 2.





JOY KELLOGG

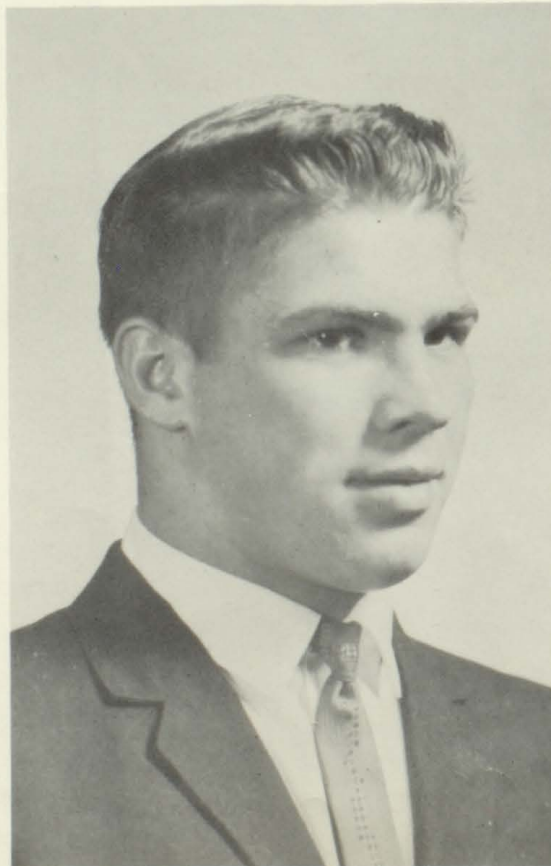
Class Secretary 2; Junior Play 3; Speech Contest 3; Junior Kayettes 1; Senior Kayettes 2, 3, 4; Kayette Cabinet 3; Secretary 1, 2; Pep Club 1; Band 1, 2, 3, 4; Pep Band 3, 4; Chorale 1, 2, 3, 4; Mixed Chorus 3, 4; State Lions' Club Band 3; Midwestern Music Camp 2; Drum Majorette 4; Yearbook Editor 4; Music Contest 1, 2, 3, 4; Office Assistant 3; Intramural Volleyball 2; Library Assistant 3, 4.

ELAINE KING

Student Council Rep. 3; Junior Kayettes 1; Senior Kayettes 2, 3, 4; Secretary 4; Pep Club 2, 3; Girls' Chorus 1, 2, 3.

DAVE HAYS

Pep Club 2; Homecoming King 4; Kays 1, 2, 3; Football 2, 3, 4; Basketball 1; Track 1, 2, 3, 4; Lettered in Football 2, 3, 4; Lettered in Track 2, 3, 4; Basketball Manager 2; FFA 1, 2, 3, 4; Pres. 4; Vice President 3; Intramural Volleyball 1, 2.





ALLAIRE HOMBURG

Student Council Rep. 1; Junior Play; Speech Play 3; Band 1, 2, 3, 4; Pep Band 2, 3, 4; Dance Band 3, 4; Chorale 1, 2, 3, 4; Mixed Chorus 1, 2, 3, 4; Special Chorus 2, 3, 4; Music Contest 2, 3, 4; Yearbook Staff 4; Kays 1, 2, 3; Kay Cabinet 3; Football 1, 2; Debate 3; Office Assistant 4.



ROSE ANN LANG

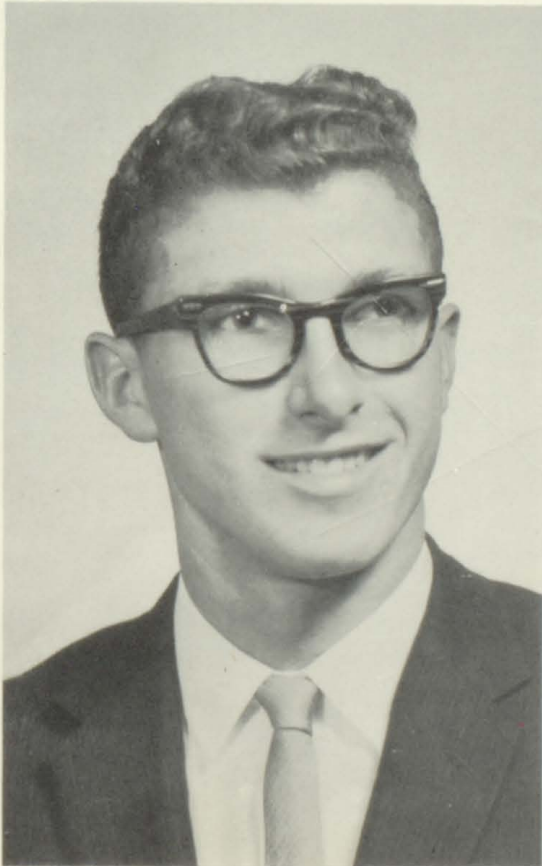
Class Secretary 1; Junior Kayettes 1; Senior Kayettes 2, 3, 4; Kayette President 4; Treasurer 3; Pep Club 2; Girls' Chorus 1, 2, 3; Snowball Attendant 3; Snowball Queen 4; Newspaper Staff 4; Yearbook Staff 4; Plainville Tests 1, 2, 3.

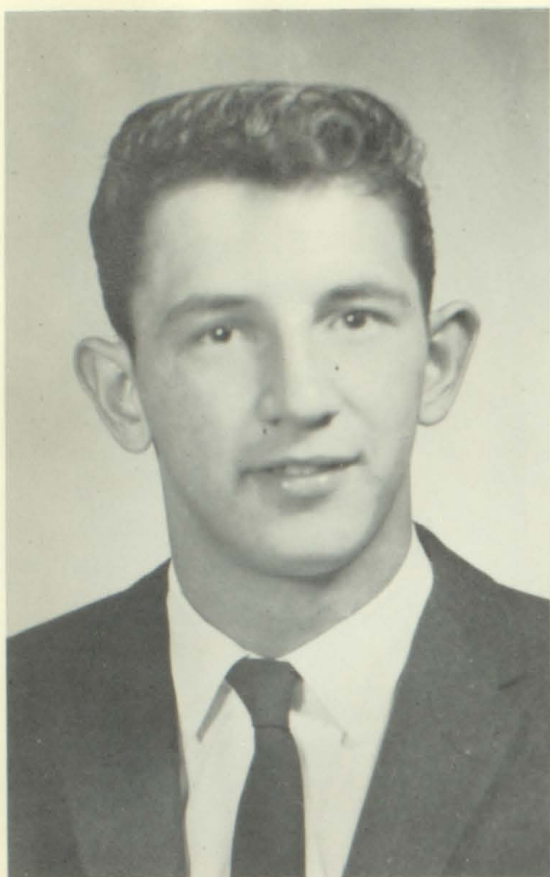
PAULETTA LUEA

Senior Kayettes 2, 3, 4; Girls' Chorus 1, 2, 3.

JERRY KELLER

Pep Club 2; Boys' Chorus 2, 3; Kays 2, 3, 4; Kay Cabinet 4; Football 2, 3, 4; Basketball 1, 2, 3, 4; Track 2, 3; Lettered in Football 4; Lettered in Basketball 4; FFA 1, 2, 3; FFA Treasurer 3; Intramural Volleyball 1, 2.





ROBERT KOHLRUS

Homecoming Attendant 4; Kays 2; Football 1, 2, 3, 4; Basketball 1, 2; Track 2; Lettered in Football 1, 2, 3, 4; Basketball Manager 3.



BARBARA MAY

Student Council Rep. 1, 2; Student Council Sec. 4; Junior Play; Junior Kayettes 1; Senior Kayettes 2, 3, 4; Kayette Cabinet 1, 2, 4; Kayette Treasurer 1; Pep Club 1, 2, 3; Band 1, 2, 3; Chorale 1, 2, 3, 4; Special Chorus 1, 2, 3, 4; Girls' Chorus 1, 2, 3, 4; Music Contest 1, 2, 3, 4; Major-ette 1, 2, 3; Snowball Server 1; Prom Server 2; Newspaper Staff 4; Intramural Volleyball 1; Library Assistant 4; State Music Contest 1, 2.

JEANIE RIFFEL

Student Council Rep. 2, 4; Play Oscar 3; Junior Play 3; Speech Contest 1, 2, 3, 4; Speech Play 3; Junior Kayettes 1; Senior Kayettes 2, 3, 4; Pep Club 1, 2, 3, 4; Cheerleader 4; Girls' Chorus 1, 2, 3, 4; Newspaper Staff 4; Girls' State 3.

GARY MILLER

Pep Club 2; Band 1, 2, 3, 4; Pep Band 1, 2, 4; Newspaper Staff 4; Kays 1, 2, 3, 4; Kay Cabinet 4; Track 1, 2, 4; Football Manager 4.





PHILIP NICHOLSON

Class President 2, 3; Speech Contest 1, 3; Speech Play 3; Band 3; Dance Band 3; Boys' Chorus 1; Prom Server 2; Orange and Black Chorale 3; Newspaper Editor 4; Kays 1, 2, 3; Football 1, 2, 3, 4; Basketball 1, 2; Lettered in Football 3, 4; Track 3; Boys' State 3; Debate 3; Scholarship Tests at Plainville 1, 2, 3.

Band 1, 2, 3, 4; Pep Band 2, 3, 4; Dance Band 3, 4; Girls' Chorus 2, 3; Newspaper Staff 4; Plainville Scholarship Tests 1, 2, 3.

DICK RIDGWAY

Junior Play 3; Band 1; Dance Band 1, 4; Boys' Chorus 1, 2; Yearbook Photographer 4; Newspaper Staff 4; Yearbook Staff 4; Kays 1, 2, 3, 4; Kays President 4; Kay Board of Directors 3; Football 2; FFA 1, 2, 3.





JEANNIE STORM

Speech Play 1; Junior Kayettes
Senior Kayettes 2, 3, 4; Pep Clu
1, 2, 3, 4; Cheerleader 1; Girls'
Chorus 1, 2; Office Assistant 4;
Volleyball Team 2.

MARY WALTERS

Junior Kayettes 1; Senior Kayettes
2, 3, 4; Pep Club 1, 2; Girls' Chorus
1, 3, 4; Newspaper Staff 4; Year-
book Staff 4; Intramural Volleyball
1, 2, 3.

DAVID SCHOECH

Class Treasurer 2; Orange and
Black Chorale 3; Boys' Chorus 2,
3; Prom Server 2; Newspaper Staff
4; Kays 1, 2, 3, 4; Kay Vice Presi-
dent 4; Kay Secretary 3; Kay
Board of Directors 3, 4; Football
1, 2, 3, 4; Basketball 1, 2, 3, 4;
Track 1; Lettered in Basketball 3,
4; Tennis 3, 4; Lettered in Tennis
3, 4.





JON SULLIVAN

Senior Kays 3, 4; Senior Play 4;
Football 4.



BETTY WEAVER

Junior Kayettes 1; Senior Kay-
ettes 2, 3, 4; Pep Club 1, 2; Of-
fice Assistant 4.

SHIRLEY WEBER

Class Vice President 3; Senior Kay-
ettes 2, 3, 4; Junior Kayettes 1; Kay-
ette Cabinet 4; Pep Club 1, 2, 3;
Cheerleader 1; Girls' Chorus 1, 2, 3,
4; Snowball Attendant 4; Newspaper
Staff 4; Plainville Tests 3; Kayette
Camp 4.





RONALD ZACHMAN

Junior Play 3; Pep Club 2; Boys' Chorus 2, 3; FFA 1, 2, 3.



CAROL WIESNER

Junior Kayettes 1; Senior Kayettes 2, 3, 4; Kayette Cabinet 4; Pep Club 3; Girls' Chorus 2, 3; Newspaper Staff 4; Office Assistant 3; Kay-Kayette Conference 4; Plainville Tests 3.

CYNTHIA YOUNG

Junior Kayettes 1; Senior Kayettes 2, 3, 4; Kayette Cabinet 1, 3; Pep Club 1, 3, 4; Girls' Chorus 1, 3; Newspaper Staff 4; Plainville Scholarship Tests 1, 2.

ELGERINE WEIGEL

Senior Kayettes 2, 3, 4; Kayette Treasurer 4; Pep Club 2, 3, 4; Orange and Black Chorale 4; Girls' Chorus 1, 2, 3, 4; Newspaper Staff 4; Intramural Volleyball 2; Plainville Tests 2.





Jerry takes savings seriously at GOLDEN BELT SAVINGS & LOAN CO.



All your sundry needs can be found at FULLER'S BROS. REXALL DRUG STORE.

Meals like Mom makes are served at MARIE'S CAFE.



The Railroader Staff thanks the merchants for their patronage which helped make the 1962 Railroader possible.

NICHOLSON'S LUMBER CO. is well supplied for the home-builder's needs.



Stop at FONDOBLE MOTOR SALES and see the '62 Chevys.

Those who think young - drink PEPSI!



Class of '62 History

Four memorable years have been spent at Ellis High by the Class of '62. As we look back over the years, we find that our class has worked together in many enjoyable activities.

As freshmen, our Hobo Days were a big success as well as fun. Our sophomore year found us selling popcorn and candy apples. The highlight of our sophomore year was the Christmas Party.

"Moonlight and Roses," was the big event of our junior year. This was the theme of our successful prom. As juniors, we also produced one of the more enjoyable plays seen at E. H. S.

At last as seniors with graduation in the very near future, we realize that our high school days are nearly over. We, the Class of '62, leave behind us many enriched memories of the days spent at E. H. S.

James Parker



Jeanne James



C
L
A
S
S

S
P
O
N
S
O
R
S

CLASS OF '62 PRESENTS

Bull in a China Shop

CAST

Dennis O'Finn - - - - - JACK BALCOMBE
Miss Hildegard - - - - - JEANNE RIFFEL
Miss Birdie - - - - - OLIVIA SNIDER
Miss Amantha - - - - - JOY KELLOGG
Miss Lucy - - - - - CINDY BITTEL

Miss Nettie - - - - - KATHY HAMBURG
Miss Elizabeth - - - - - BARBARA MAY
Kramer - - - - - ALAIRE HOMBURG
Jane Rogers - - - - - NANCY BRAY
Johnson - - - - - DICK RIDGWAY

Stretcher Bearers - - - - - BOB SCHMIDT and
BRUCE FELDCAMP
Student Director - - - - - GLORIA HELGET



CLASS OF '63 PRESENTS

Who Dunit?

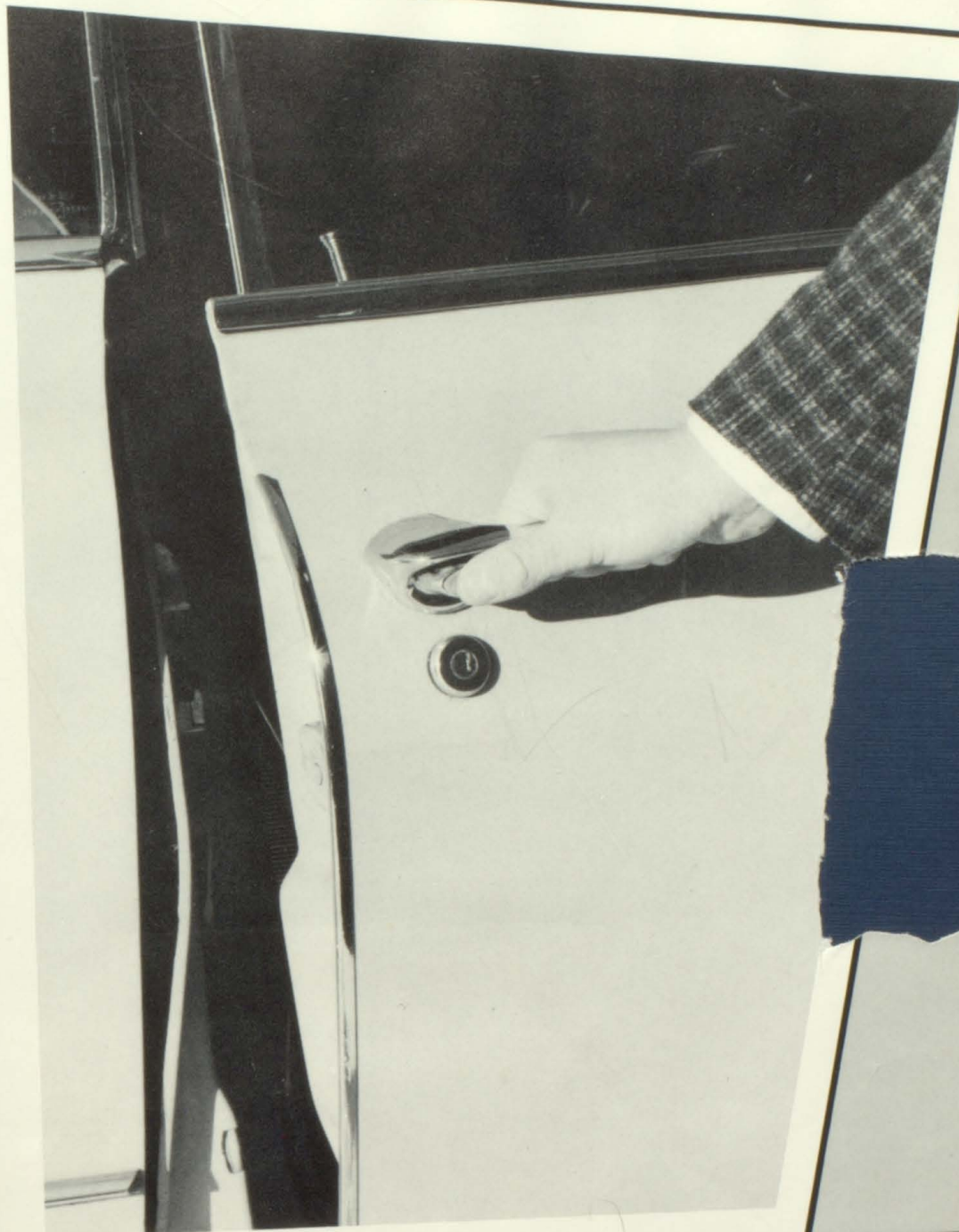
CAST

Alexander Arlington - - - - - JIM SHIRCK
Andrew Arlington - - - - - LARRY AUGUSTINE
Harry - - - - - BILL SEIBEL
Michael - - - - - STEVE ROPER
Brewester - - - - - RICHARD ROBERTS

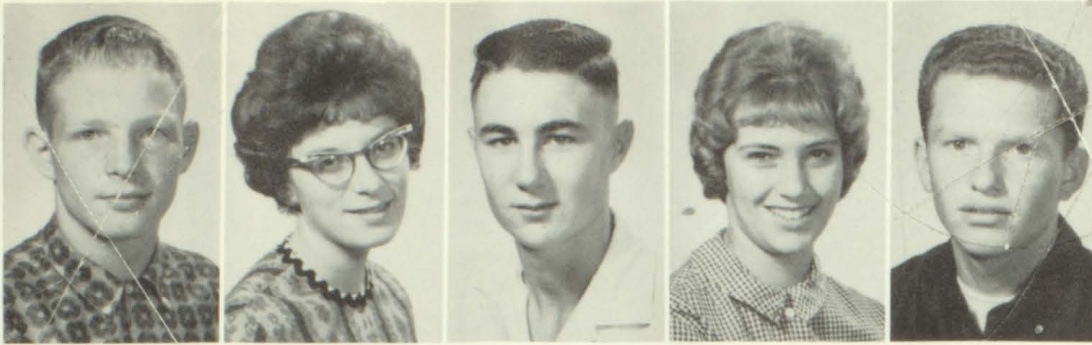
Muriel - - - - - ELLEN ARMBRUSTER
Isabel - - - - - ANN NELSON
Verun - - - - - CAROL SEIBEL
Anne - - - - - VIRGINIA GABEL
Miss Jenkins - - - - - MARGARET BEGLER

Flo - - - - - CAROL LORIMOR
Student Directors - - - - - JUDI DORZWEILER and
BARBARA VINE





JUNIORS



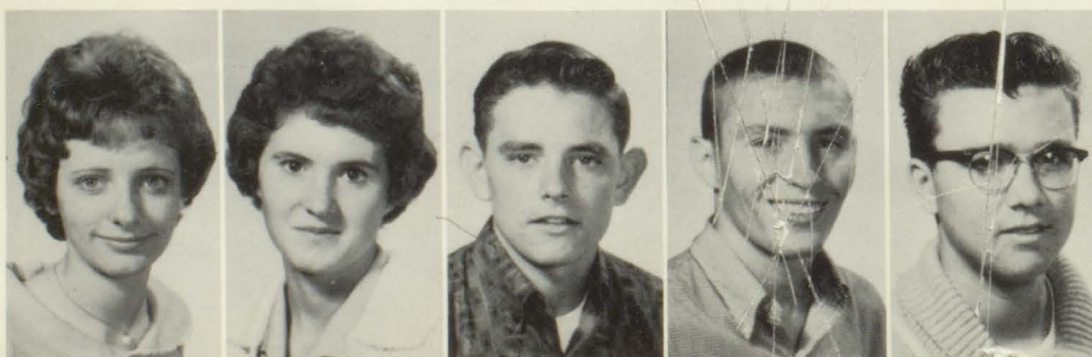
Armbrister, Harold
Armbruster, Ellen
Armbruster, John
Aschenbrenner, Rosetta
Augustine, Larry

Augustine, Roseline
Baughner, Nancy
Beals, Martha
Begler, Margaret
Bongartz, Lynda



Boos, Mark
Crawford, George
Crawford, Georgia
Deutscher, Joleen
Dorzweiler, Judy

Dreher, Diane
Eberly, Kenneth
Eberly, Sylvia
Erbert, Judith
Fischer, Bernadine



Fisher, Lou Ann
Gabel, Virginia
Helget, John
Hull, Mike
Jacques, Robert



Kohlrus, Jeannie
Lang, Betty Jean
Lorimor, Carol
Mallory, Larry
Matteson, Glynn

Mayes, Mary Ann
Miller, Ronald
Nelson, Ann
Ptaschek, Karen
Roberts, Richard



Roper, Steve
Schuster, Lois
Seibel, Billy
Seibel, Carol
Shirck, Jimmy

Stadelman, Frank
Vine, Barbara
Weber, Norma
Weber, Phyllis
Wiesner, David



Wolf, Dennis





JUNIOR OFFICERS

PRESIDENT

Ellen Armbruster

VICE PRESIDENT

Diane Dreher

er

z

Sponsor

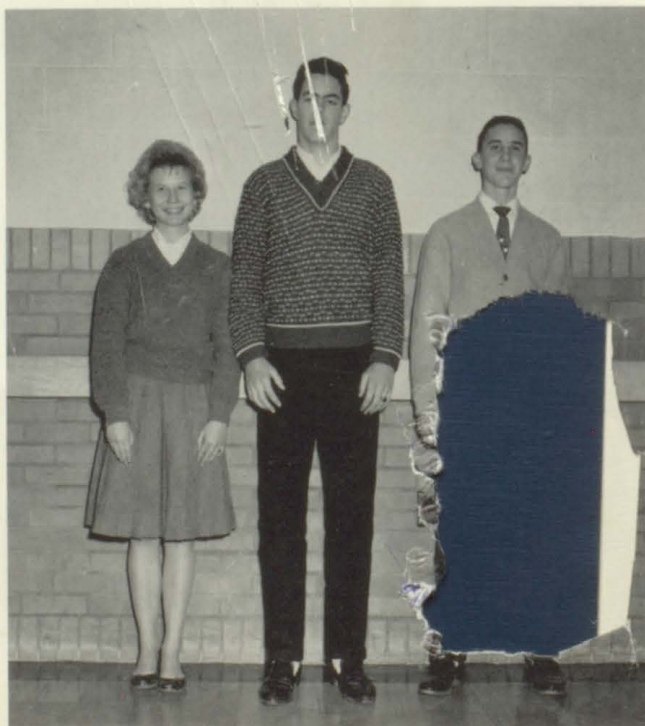
WEBB'S DERBY SERVICE STATION

Sponsor

GABEL'S BARBER SHOP

JUNIOR REPRESENTATIVES

Ann Nelson
Steve Roper
Bill Seibel



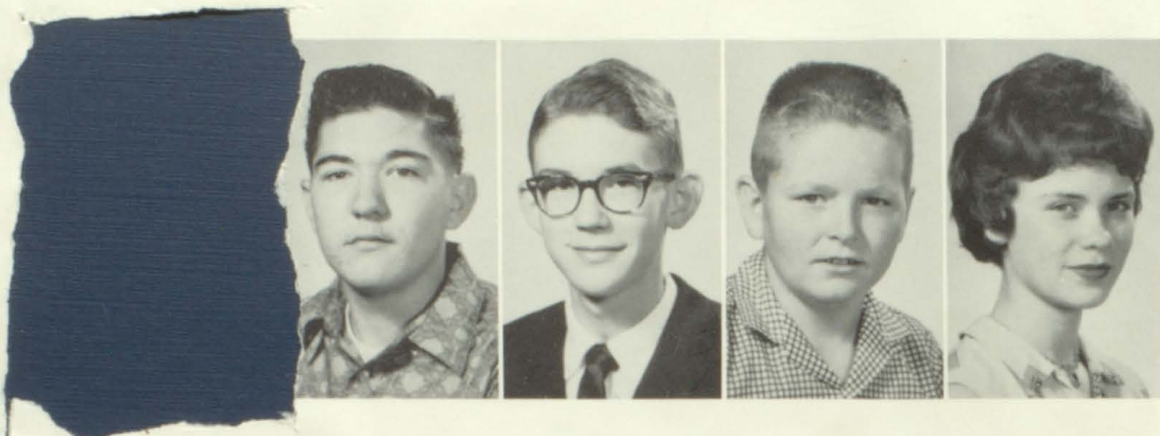


SOPH
RES



Armbrister, William
Armbruster, Jerry
Armbruster, Paul
Armentrout, Nancy
Augustine, Charles

Augustine, Richard
Aust, Steve
Balcombe, Douglas
Bennett, Donald
Blackburn, Peggy



Boschowitzki, Linda
Denning, Carol
Denning, Larry
Deutscher, Steven
Dinkel, Marilyn

Dirks, Brenda
Douglas, Peggy
Engel, Kenneth
Fisher, Ronald
Flax, Leon



Fries, Richard
Fuller, Sandy
Gaschler, Leon
Hays, Jay C.
Henderson, Floyd



Huber, Carol
Hurt, Douglas
Kroeger, Mary Kay
Kuhn, Robert
Maier, Donald

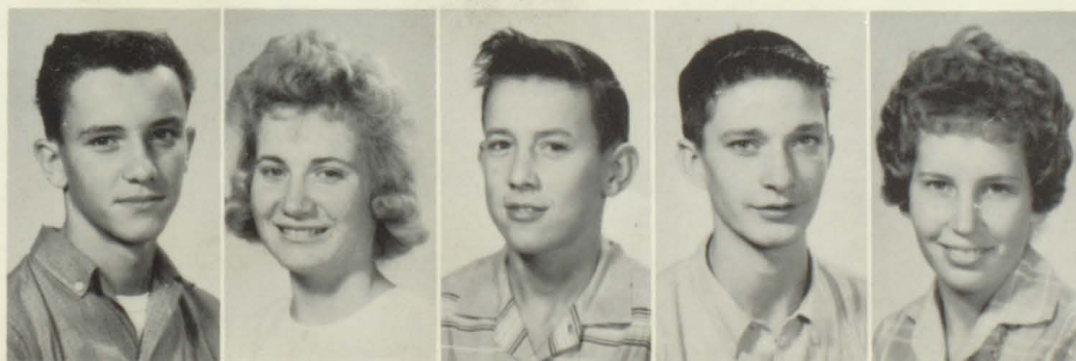


May, Leon
Neuburger, Billie
Olmstead, Sherry
Pearson, Gay
Robertson, Richard



Rupp, John
Schoenberger, Kenneth
Schöenthaler, Terry
Schuster, Verlin
Simminger, Sheryl

Waldschmidt, Connie
Waldschmidt, Ronald
Wasinger, Cathy
Weatherholt, Richard
Weaver, Lucille



Weber, Leslie
Weber, Nancy
Weigel, Floyd
Weigel, Gerald
Wentling, Mary Kay



Young, Douglas

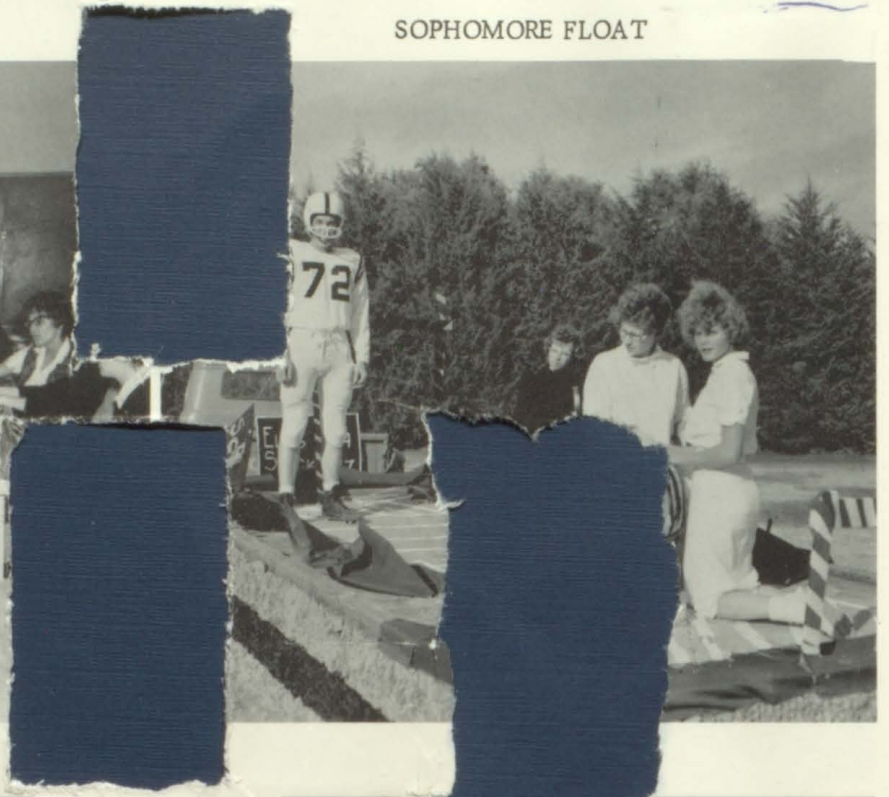
Younger, Bernadette

Zorn, Myron

HOMEMAKING II

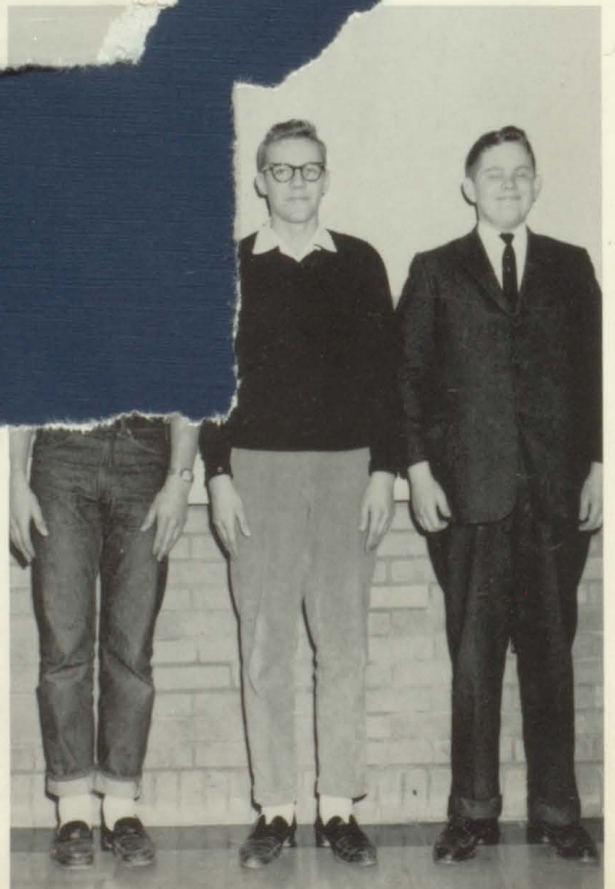


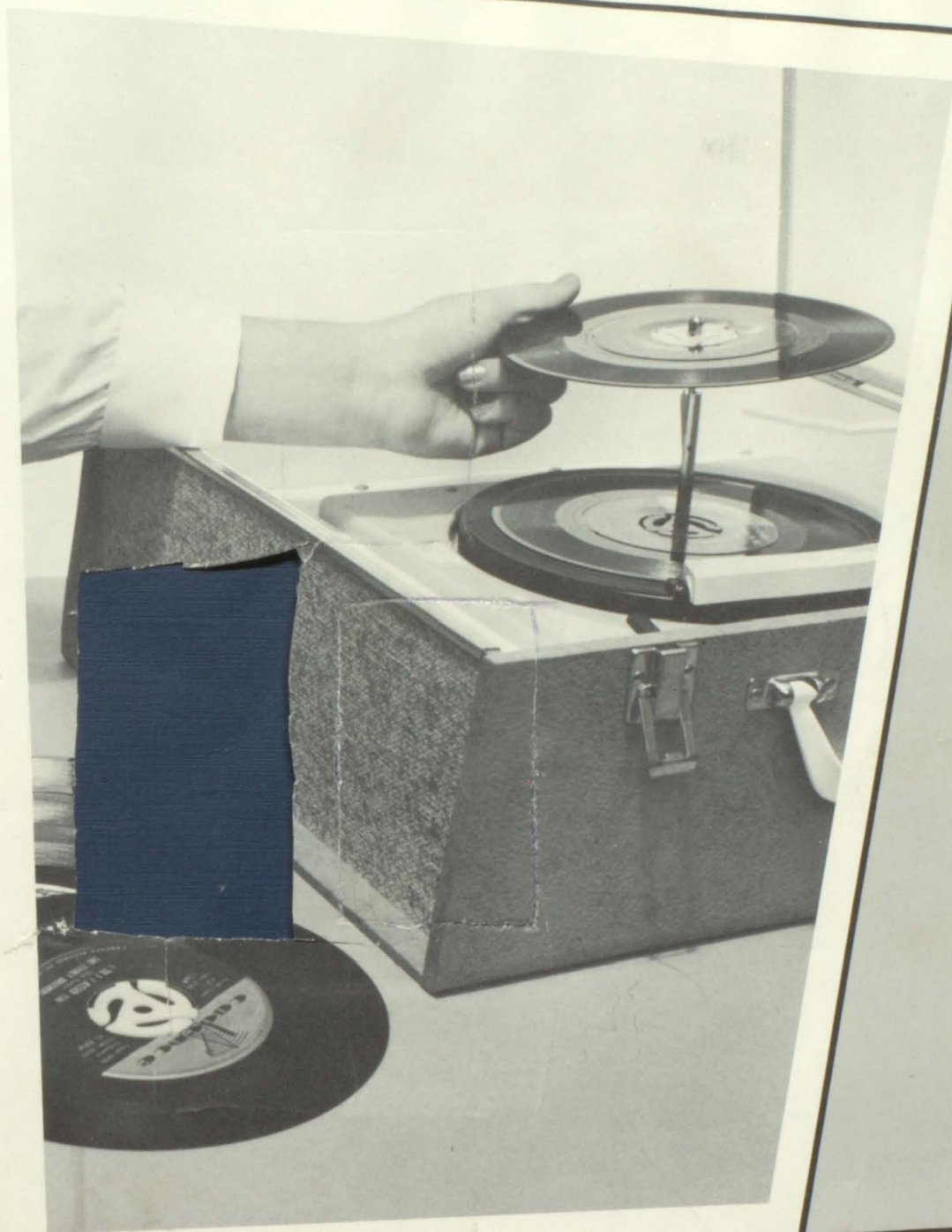
SOPHOMORE FLOAT



C
E
F
I
C
E
R
S

N
T
A
T
I
V
E
S





FRES



Allen, Warren
Alloway, Sharon
Armbruster, Gregory
Augustine, Gilbert
Bailey, Cheryl

Beals, Mary Jo
Beckner, Sandra
Begler, Beverly
Bennett, David
Berens, Robert



Bieker, Gerald
Bittel, Steven
Brungardt, Esther
Cox, Glenn
Deutscher, David

Desmarteau, Duryea
Dinkel, Carol
Dinkel, Helen
Eberle, Marilyn
Engel, Phyllis



Gabel, Daniel
Gabel, Dennis
Helget, Alan
Helget, Gary
Henderson, Robert



Honas, Kay
Honas, Marvin
Honas, Vivian
Horner, Charles
Huffman, Barbara

Huffman, Connie
Jones, Charlene
Keller, Duane
Keller, Virginia
King, William



Knieling, Kathryn
Kroeger, Glen
Kroeger, Myron
Landauer, Carol
Landauer, Roger

Lang, Gerald
Locker, Patricia
Longley, Joyce
Luea, Lawrence
Luea, Paul



Macken
Mayes,
Niernbe
Orth, G

Roberts, Joyce
 Roberts, Sharon
 Sawazhki, Charlene
 Schmidt, Betty
 Schoenberger, Eugene



Schoenthaler, Cheryl
 Schumm, Aleta
 Schuster, Elizabeth
 Scott, James
 Smith, Sybil

Snider, Lue Ann
 Steel, Sally
 Webb, Robert
 Weigel, Allen
 Weimer, Susan



Wheeler, Cynthia
 Windholz, Rose Ann
 Wishnuck, Diane
 Younger, Judy



FRESHMAN OFFICERS

Left to Right: Myron Kroeger, V. President; Connie Huffman, Treasurer; Judy Younger, Secretary; Marvin Honas, President.

Sponsored by:
JOSTENS, INC.
Owatonna, Minn.

CLASS REPRESENTATIVES

Left to Right: Dennis Gabel, Sally Steel, Glen Kroeger.



Freshman Homemaking
Class

Sponsored by:
LABARGE BARBER SHOP
MARIE'S BEAUTY SHOP



Shop at STETZ supplies.

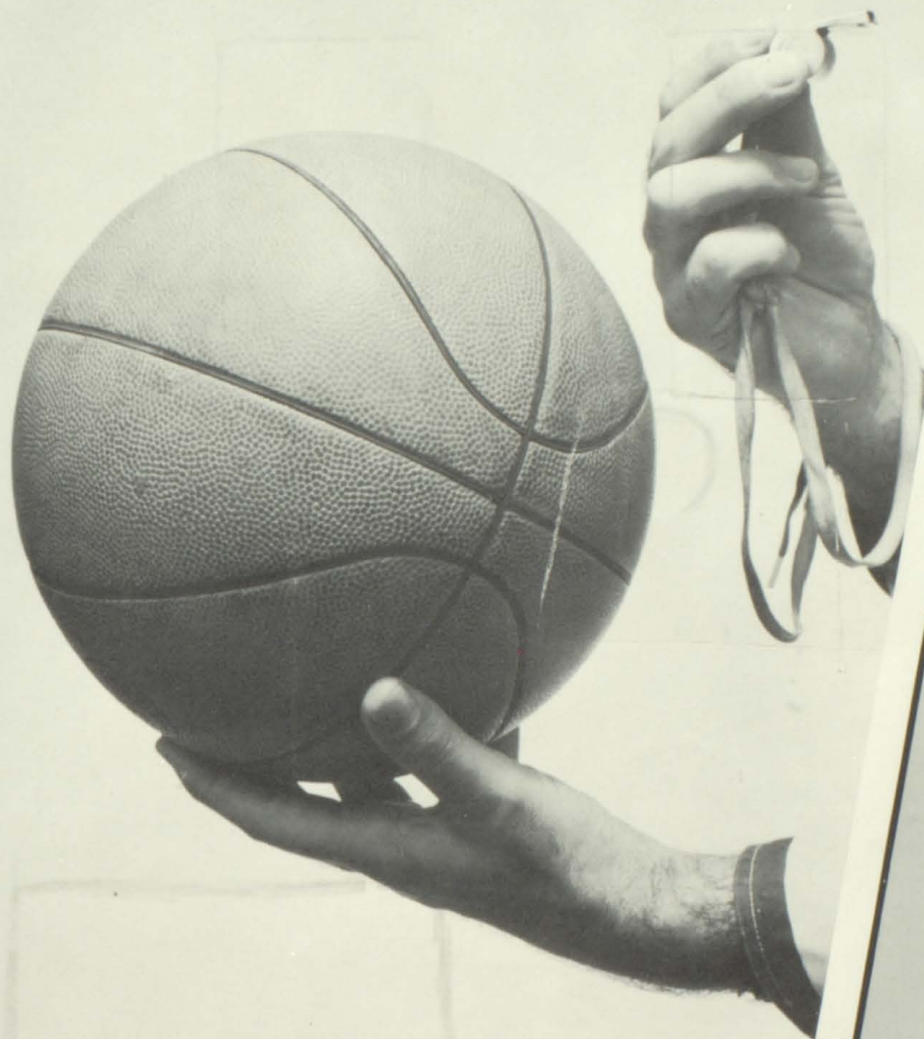


Future homemakers enjoy shopping at KELLER'S FURNITURE STORE.

Bruce and David admire the styles with an eye toward their college wardrobes at HAROLD'S MEN'S WEAR.

SEIBEL'S STORE is well supplied with the latest fashions.





ATHLETICS



A SQUAD MEMBERS - BOTTOM ROW, Left to Right: D. Wolf; D. Schoech; B. Feldkamp; J. Keller; R. Armbruster; E. Fuller; R. Schmidt; P. Nicholson; D. Hays; J. Helget; J. Rupp; V. Schuster; L. Mallory; M. Boos; D. Weisner; J. Armentrout; D. Cox; R. Waldschmidt; J. Hays; K. Schoenberger; M. Hull; J. Weigel; T. Schoenthaler; R. Waldschmidt; D. Keller.

1
9
6
1



L
i
n
e
u
p

B. SQUAD MEMBERS - BOTTOM ROW, Left to Right: A. Helget; G. Cox; F. Henderson; B. King; G. Kroeger; E. Schoenberger; G. Augustine; L. Gaschler; D. Gabel; D. Deustcher; B. Seibel; R. Miller; D. Gabel; R. Henderson; R. Roberts; L. Augustine; S. Roper; G. Helget; S. Bittel.





DAVE HAYS
Fullback



R. WALDSCHMIDT
Fullback



DAVE SCHOECH
Quarterback



EMMETT FULLER
Halfback



DON COX
Halfback

4

1

FOOTBALL SCORES

3

Ellis	- - - - -	25 ✓
Ellis	- - - - -	21 ✓
Ellis	- - - - -	6
Ellis	- - - - -	7
Ellis	- - - - -	13
Ellis	- - - - -	19 ✓
Ellis	- - - - -	41 ✓
Ellis	- - - - -	7

Lacrosse	- - - - -	13 ✓
Palco	- - - - -	14
Phillipsburg	- - - - -	35 ✓
Plainville	- - - - -	17 ✓
Victoria	- - - - -	13 ✓
Stockton	- - - - -	0
Hill City	- - - - -	14
Wakeeney	- - - - -	13 ✓

H. COACH STANDSBURY

AS. COACH LONG



BOB KOHLRUS
Tackle



BOB SCHMIDT

R. ARMBRUSTER
Tackle

PHIL NICHOLSON
End

B. FELDKAMP
Guard

J. ARMENTROUT
End

JERRY KELLER
Center



Homecoming

Miss Beulah Fischer

Homecoming Queen

Ellis High School held its Homecoming for 1961 on October 20th. The afternoon parade saw the classes and organizations well represented by their colorful and artistic floats. In pre-game activities, Miss Beulah Fischer was crowned Homecoming Queen by David Hays, Homecoming King. Royal attendants were Miss Gloria Helget, Miss Phyllis Johnson, Robert Schmidt, and Robert Kohlrus. Victory over the Stockton Tigers brought the evening to a grand climax. The dance following the game ended another successful Homecoming for Ellis High.

Juniors take first place with their float.

The Queen and her attendants.

Crowning the Queen.





Seniors take second place with their float.



The King and his attendants.



Third place float by the Freshmen.



On the left - the Kayette float. On the right - football boys voting for the Queen.



NELSON'S SUPER MARKET
Sponsor

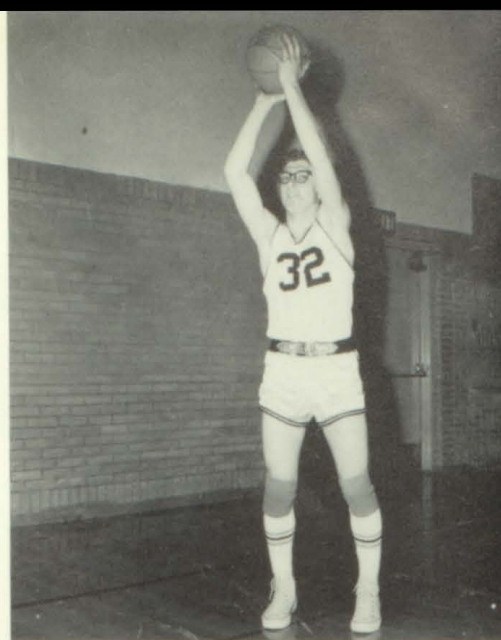
1961

David Hays
Homecoming King





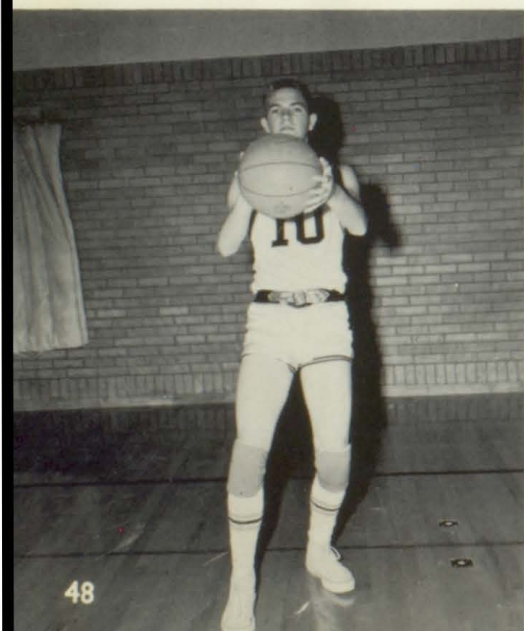
R. SCHMIDT



J. KELLER



FRONT ROW: E. Dorzweiler; D. Schoech; L. Mallory; D. Weisner; R. Schmidt; J. Keller. SECOND ROW: Coach Stansbury; K. Schoenberger; J. Helget; D. Wolf; P. Armbruster; D. Keller; Coach Long; A. Bollig; B. King.

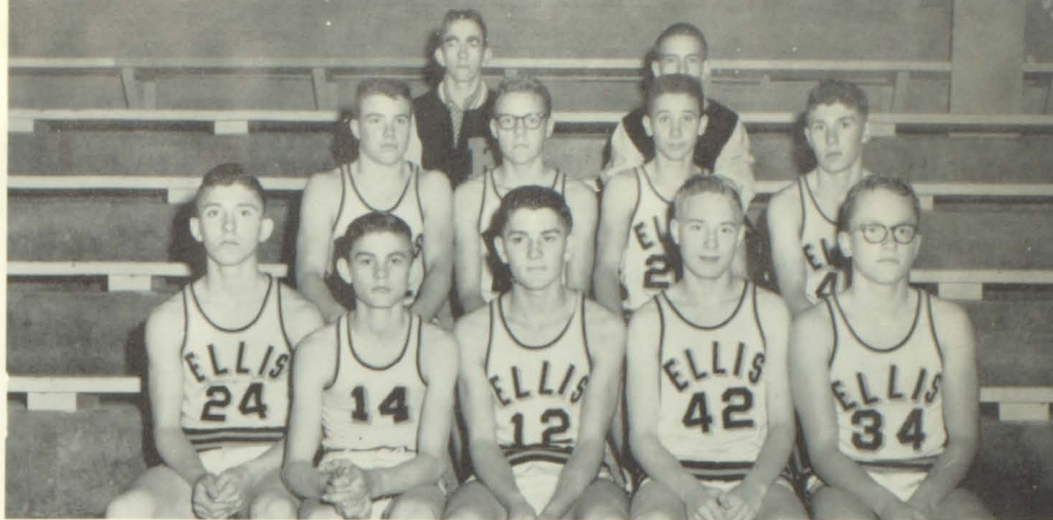


E. DORZWEILER

D. SCHOECH



"B" Team



D. Keller, M. Honas, A. Helget, G. Cox, D. Desmfarteu, J. Hays, L. May, B. Seibel, D. Gabel, A. Bollig, B. King.

Sponsored by
CENTRAL KANSAS
POWER COMPANY



STUDENT MANAGERS: B. King and
A. Bollig.

Sponsored by
GAMBLES



COACHES: Long and Stansbury.

Freshman Team



Coach Long, G. Beiker,
G. Cox, D. Desmarteu,
D. Gable.

SECOND ROW: J. Scott,
A. Helget, M. Honas, D.
Keller, B. King.



Tennis Team

BOTTOM ROW, left to right: L. Knoll, Coach; D. Cox; B. Feldkamp; D. Schoech; D. Hurt; M. Honas; S. Bittel; B. King; R. Zachman.

Sponsored by
STEEL BARBARA SHOP

Track Lettermen

BOTTOM ROW, left to right: L. Mallory; P. Nicholson; R. Schmidt; D. Wolf; D. Hays; E. Fuller.

Sponsored by
WHEELER APPLIANCE



Golf Team

BOTTOM ROW, left to right: M. Kroeger; R. Henderson; D. Weatherholt; J. Scott.
SECOND ROW, left to right: A. Homburg; J. Keller; R. Landauer; G. Helget; G. Augustine. THIRD ROW, left to right: A. Bollig; E. Dorzweiler; L. Mallory; R. Robertson; B. Seibel; L. May.

E. H. S. Track Team

TOP ROW, left to right: Mike Hull; Skipper Matteson; David Weisner. BOTTOM ROW, left to right: Gary Miller; Don Cox; Mark Boos; John Armbrister. NOT PICTURED: Ed Dinkel.



Sophomore Track Team

TOP ROW, left to right: Jay Hays; John Rupp; Robert Kuhn; Steve Deutscher; Kenny Schoenberger. BOTTOM ROW, left to right: Larry Denning; Ronnie Waldschmidt; Donald Maier; Jerry Weigel; Floyd Henderson.

Sponsored by
ELLIS RENDERING CO.

Freshman Track Team

TOP ROW, left to right: Duryea Desmarteau; Robert Henderson; David Deutscher; Gary Helget; Robert Webb; Gilbert Augustine. BOTTOM ROW, left to right: Eugene Schoenberger; Allen Helget; Glen Cox; Dennis Gabel; Gilbert Orth; Robert Berens.





The Flower and Gift Corner--
MAX THE CLEANERS



A Favorite Stopping Place After
School Activities Is the CITY CAFE.

Daily Shopping Is a Pleasure
at WEISNER'S GROCERY



Friendly Service Is Always Found
at the CO-OP.

Grains and Feeds

Gas, Oil and Tires

Lumber and
Supplies

Diesel Fuel and
L-P Gas



*The Golden Belt
Cooperative Association, Inc.*

Highway 40 at Monroe Street
Phone PArkway 6-4262
Ellis, Kansas



IVITIES

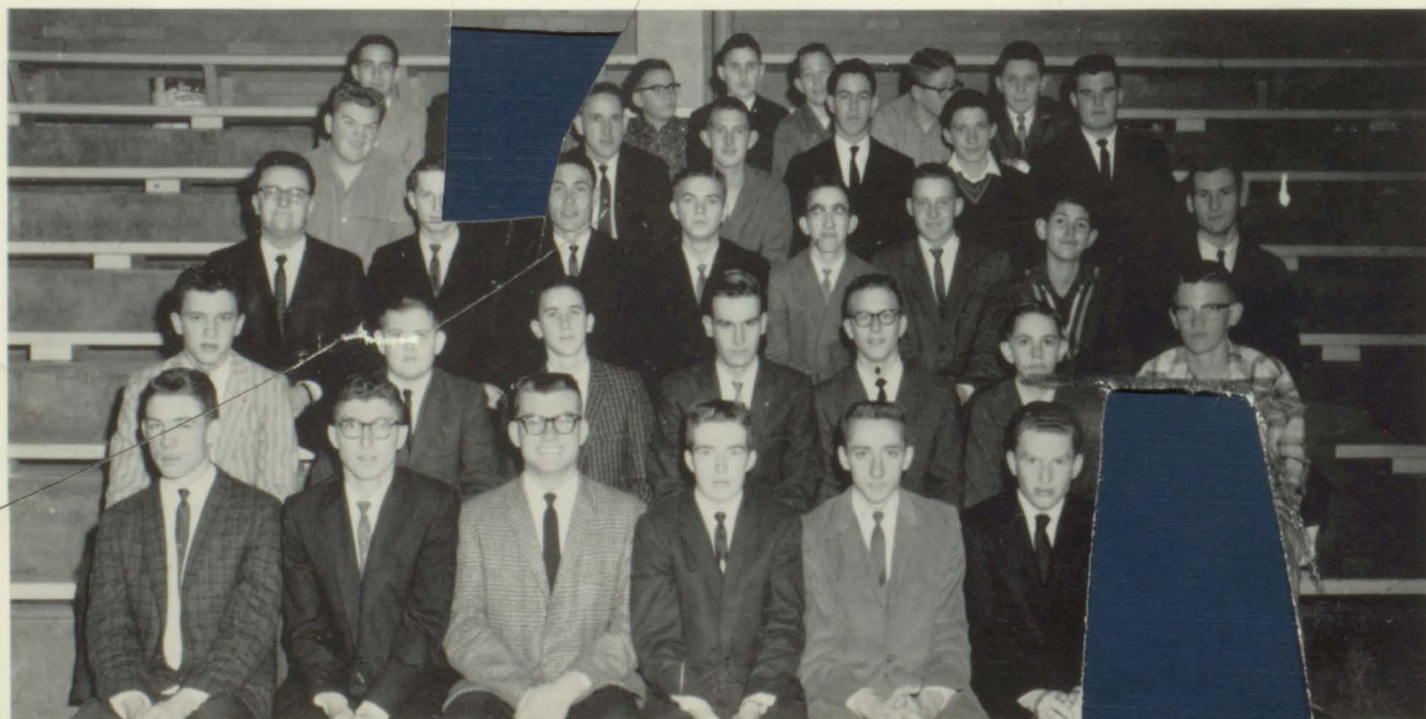
Kayette Club



OFFICERS, Left to Right: Elgerine Weigel, Treasurer; Kathy Hamburg, V. President; Rose Ann Lang, President; Elaine King, Secretary. BOARD OF DIRECTORS - BOTTOM ROW, Left to Right: Aleta Schumm; Olivia Snider; Shirley Weber; Gloria Helget; Judy Erbert; Joleen Deutscher; Linda Bongartz; Lois Schuster; Mary Kay Wentling; Elizabeth Mackender; Barbara May; Miss Epps, Sponsor.

Kay Club

OFFICERS: Dick Ridgway, President; Dave Schoech, V. President; Verlin Engel, Secretary; Bill Seibel, Treasurer. BOARD OF DIRECTORS: Larry Mallory; Jerry Keller; John Helget; Jim Shirck; Larry Augustine. Not Pictured, Garry Miller; Mr. Knoll, Sponsor.



Winter Wonderland

December 16, 1962



ROYALTY: Queen - Rose Ann Lang, Attendants - Kathy Hamburg and Shirley Weber; Princesses - Virginia Gable, Brenda Dirks, and Elizabeth Mackender.

As one walked over a bridge and through an archway of pine and holly, he came into a "Winter Wonderland" of green and white crepe paper. Large snowflakes rested on the green stage curtain. The punch table had a centerpiece of flaming log cakes. The royalty sat in a huge sleigh decorated in green and white. A record crowd whirled to the dreamy music played by Jim Wolf's band.

29





MR. DEROY ROGGE - Director

Band

Ann Nelson
Joy Kellogg
Sandy Fuller
Gay Pearson
Cindy Wheeler
Elizabeth Mackendar
Nancy Bray

Douglas Balcombe
Dick Weatherholt
Barbara Vine
Jim Scott
Ellen Armbruster
Cheryl Bailey
Betty Mayes

Peggy Douglas
Phyllis Engel
Sheryl Schoenthaler
Steve Bittel
Nancy Baugher
Martha Beals
Carol Huber

The El-Aires





Members

Joy Kellogg - Drum Majorette

Carol Lorimor (not pictured)
 Billy Seibel
 Glen Kroeger
 Aleta Schumm
 Olivia Snider
 David Bennet
 Jerry Armbrister (not pictured)

Gary Miller
 Richard Roberts
 Allaire Homburg
 Connie Waldschmidt
 Rosie Augustine
 Carol Seibel
 Judy Dorzweiler

Phyllis Johnson

Pep Band





Majorettes

Girls Glee

BOTTOM ROW, Left to Right: Mr. Rogge; C. Seibel; E. Wiegel; K. Hamburg; S. Weber; J. Kellogg; J. Deutscher; E. Armbruster; A. Schumm; B. May; N. Bray; L. Schuster; K. Ptaschek; B. Vine; R. Augustine; R. Kohlrus; C. Bailey; E. Mackender; C. Schoenthaler; G. Pearson; G. Helget; G. Crawford; S. Simminger; S. Olmstead; S. Fuller; C. Huber; S. Steel; M. Beglar; V. Gabel; B. Lang; P. Weber; L. Fisher; L. Bongartz; S. Eberle; C. Lormior; D. Dreher; A. Nelson; M. Beals; E. Brungardt; N. Weber; N. Baugher; M. Walters; L. Boschowitzki; P. Douglas; C. Denning; J. Roberts; K. Knieling; E. Schuster; H. Dinkel; C. Landauer; M. Dinkel; M. Eberle; C. Wheeler; B. Neuburger; P. Blackburn; N. Weber; B. Younger.



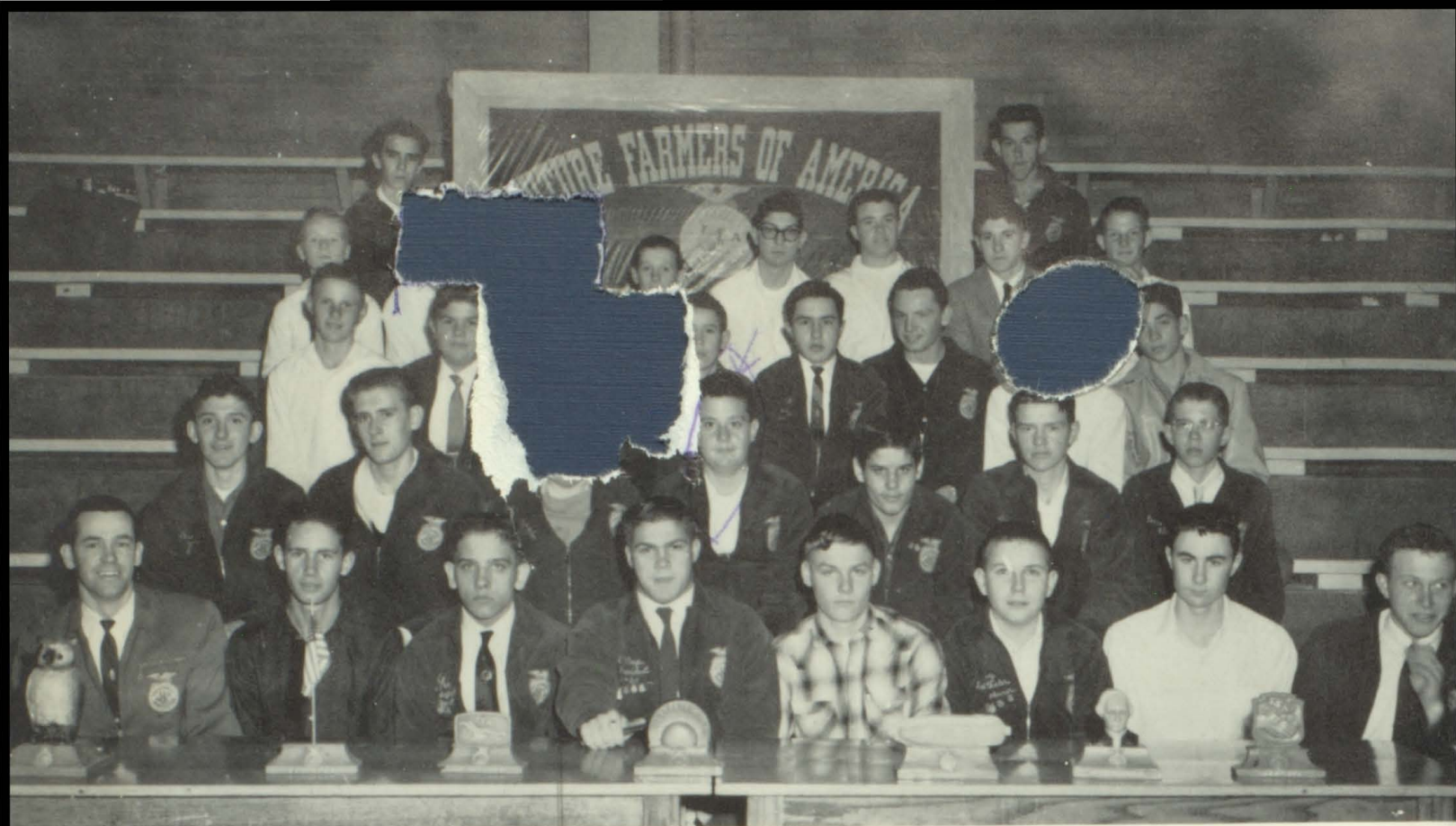


Chorale

SEATED: S. Steel; J. Kellogg; E. Weigel; J. Deutscher; L. Schuster; C. Bailey; E. Mackender; G. Pearson; S. Olmstead; D. Dreher; A. Nelson; C. Huber; K. Hamburg; B. May; G. Helget; E. Armbruster; S. Fuller; C. Seibel; C. Schoenthaler; A. Schumm; S. Simminger; K. Ptaschek; C. Lorimor; N. Bray; M. Beals; M. Kroeger; T. Schoenthaler; J. Scott; S. Bittel; M. Hull; L. Augustine; R. Richardson; B. Seibel; Mr. Rogge, director; A. Homberg; R. Miller; B. Feldkamp; E. Dinkel; V. Engel; S. Roper; R. Roberts; D. Balcombe; J. Shirck.

Special Chorus





Future Farmers of America

Mr. Schneider; S. Matteson; R. Waldschmidt; D. Hays, President; G. Crawford; T. Schoenthaler; J. Armbruster; M. Boos; D. Keller; P. Armbruster; D. Bennett; R. Landauer; R. Waldschmidt; J. Meier; L. Flax; D. Gabel; L. Luea; D. Deutscher; A. Weigel; L. Gaschler; K. Eberle; R. Augustine; R. Kuhn; D. Bennett; R. Berens; R. Fischer; F. Weigel; R. Fries; J. Hays; D. Gabel; H. Armbrister; J. Armbruster; V. Schuster.

Student Congress

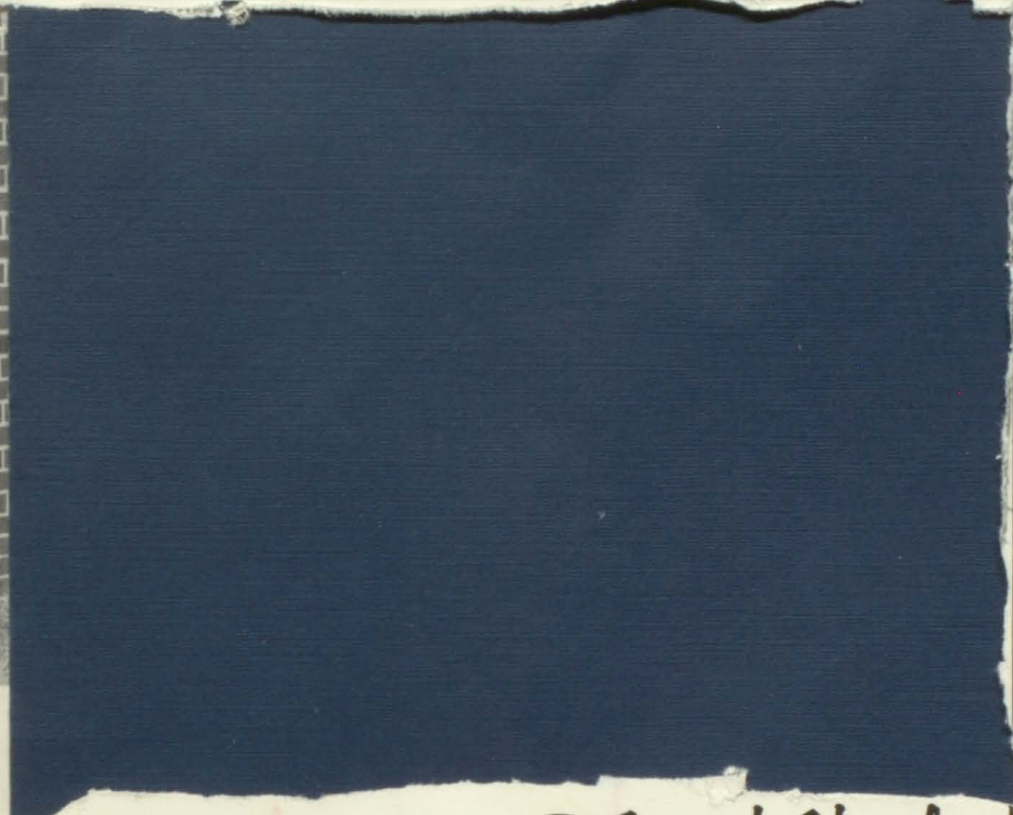




LIBRARIANS



OFFICE ASSISTANTS



P. Johnson



J. Hel

B-Squad Cheerleaders

J. Longley
B. Dirks
M. Wentling
Head
Cheerleader



B. Huffman
S. Simminger



Railroader Staff

EDITORS: Joy Kellogg and Cindy Bittel.

STAFF: Elgerine Weigel, Ann Kohl, Rose Lang, Kathy Hamburg, Bob Schmidt, Jeanne Riffel, Gloria Helget.

BUSINESS MANAGER: Allaire Hornburg

PHOTOGRAPHERS: Dick Ridgway;
Jack Balcombe

Ellis High Express

Left to right: Kathy Hamburg; Carol Weisner; Nancy Bray; Phil Nicholson, Editor-in-Chief; Barbara May; Bruce Feldkamp; and Olivia Snider.





Class of '62 presents "Antigone."

Etc.



Autographs

