



THE RAILROADER

1960

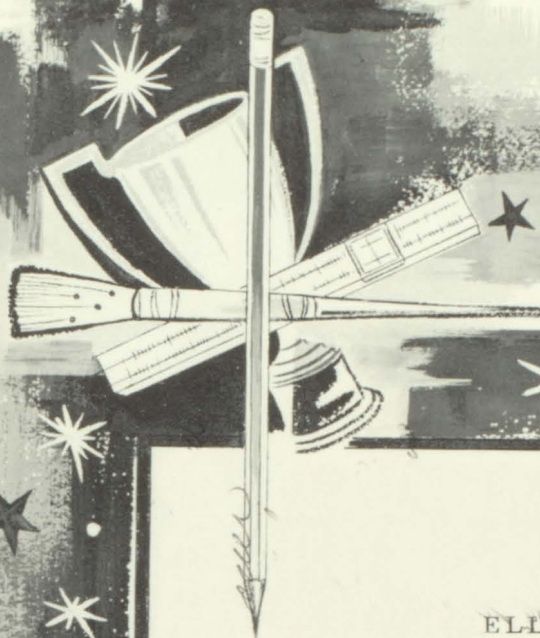












ELLIS HIGH SCHOOL

Ellis, Kansas

*Railroader*

Barbara Shirk, Editor





BACK ROW: Mac Reed, Wayne Blackburn, Bill Honas, Dean Denning, Orval Weigel, Garnis Hagen, Ernie Honas, Harry Weber. FRONT ROW: Mary Jane Augustine, Bonnie Kingsley, Lola Luea, Barbara Bittel, Barbara Shirk, Barbara Pfiefer, Billie Allen, Edna Loflin, Barbara Douglas, Marlene Dinkel. ABSENT: Darlene Dinkel.



Editor Barb Shirk and Asst. Editor Marlene Dinkel enjoying a quick break.

Advertising Manager, Garnis Hagen and Business Manager, Bill Honas swapping business techniques.



## 1960 Annual Staff

Editor	Barbara Shirk
Asst. Editor	Marlene Dinkel
Advertising Manager	Garnis Hagen
Business Manager	Bill Honas
Copy Editor	Dean Denning
Sports Editor	Wayne Blackburn
Society Editor	Barbara Pfiefer
Music Editor	Mary Jane Augustine
Activities	Barbara Douglas
Art Editor	Bonnie Kingsley
Make-up Editors	Darlene Dinkel
	Billie Allen
Senior Class Editors	Barbara Bittel
	Lola Luea
Underclassmen	Edna Loflin
	Orval Weigel



Dear Katie

I will always remember

the fun we had on the trip.

You are a very sweet girl and

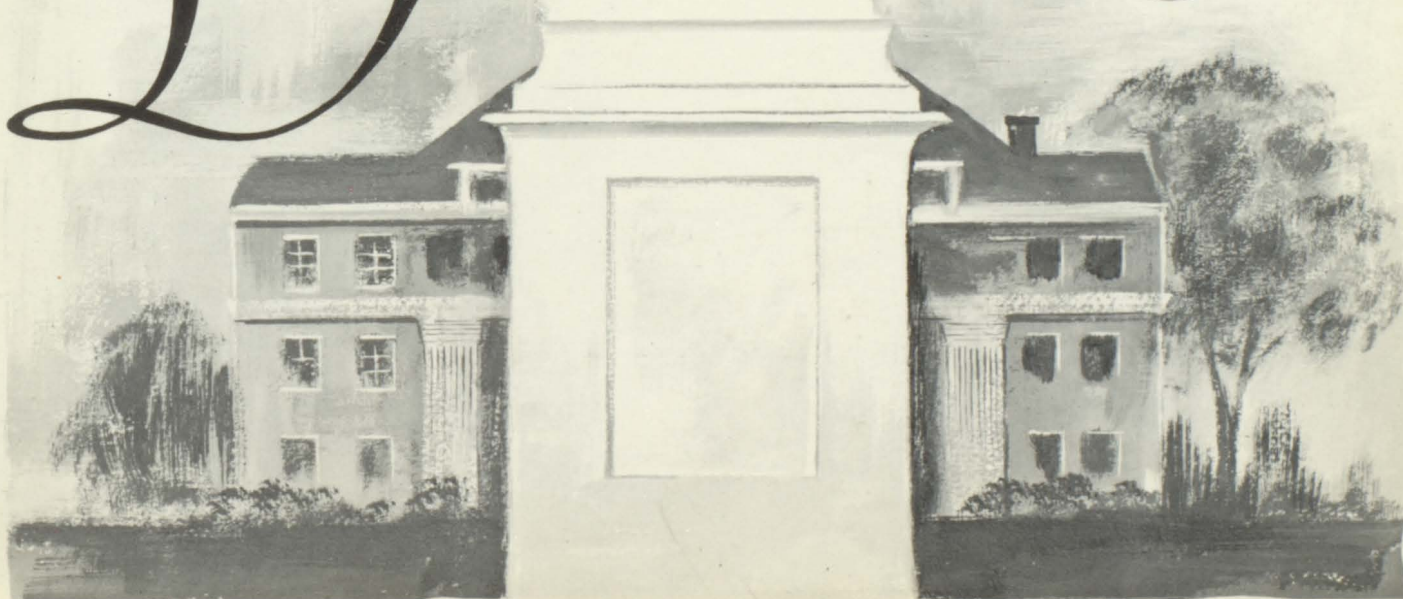
bringer of fun. Best wishes always.

Carol

Pattie,  
Well, here it is  
time for writing  
in yearbooks again!  
Wouldn't it be wonderful  
if we could make time  
stand still for a while?  
We've really had  
a lot of fun together.  
We've had a lot of  
long talks. You know,  
it seems like it's always  
your turn to come up?  
Next year I'm going to make  
you do all of the running up  
the ladder! Well, I guess I'm  
about as far out of things to  
say, except best of luck in  
everything you do.

Phyllis J.  
Soph 59-60

Dedication

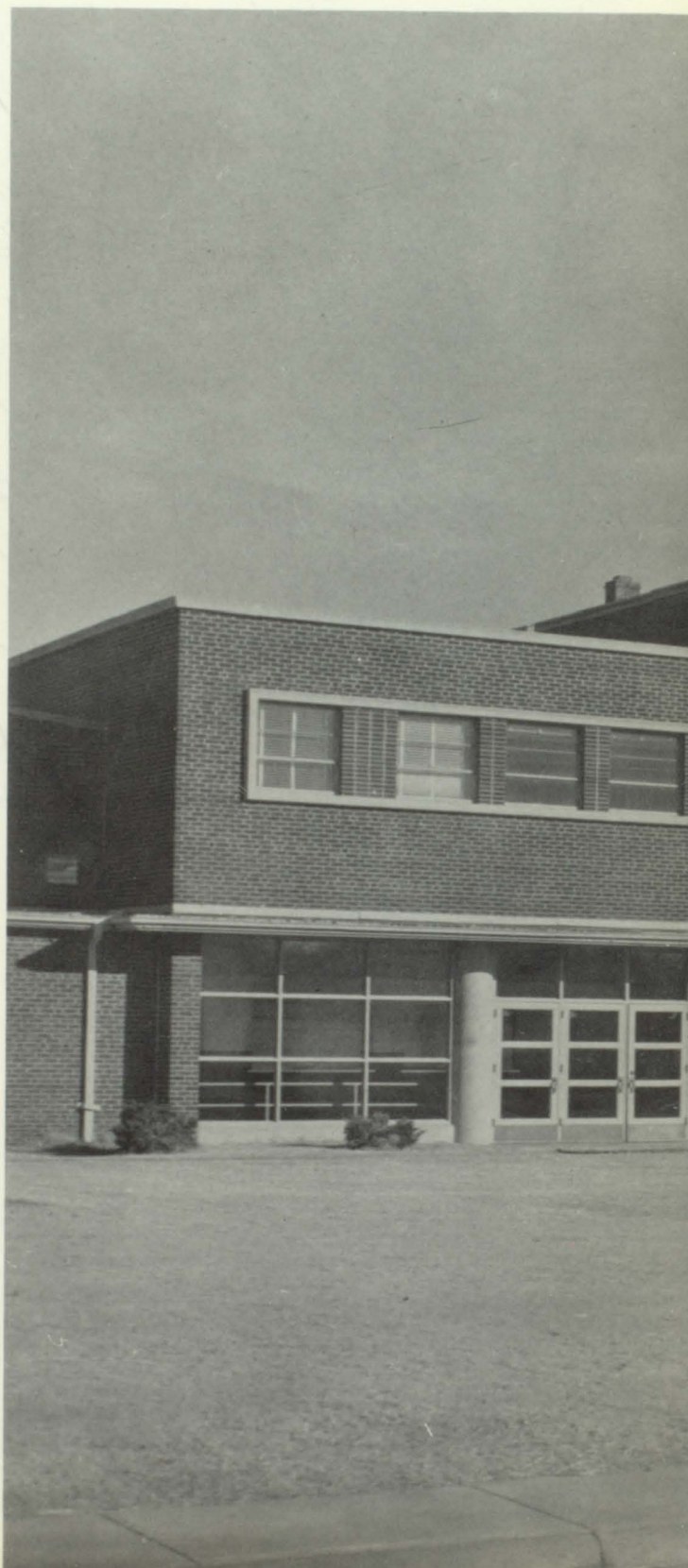




## Dedication

The Class of '60 bids the school farewell  
What shall befall us we cannot foretell.  
Yet, future thoughts will not obscure the  
past;  
We shall recall these years until the last.  
In this, our dedication, we would praise  
The Ellis folk, who've helped us through  
the days.  
Eternally the church has been our light  
Inspiring us to strive to do the right.  
Our parents have stood by us all the while  
Bestowing kindly counsel with a smile.  
The Alma Mater, too, we would extole  
For it has lead us onward toward our goal.  
We're grateful for your gift, the golden  
key,  
Which ope's the door to our futurity.

by BARBARA SHIRK



# *The Key to Success*







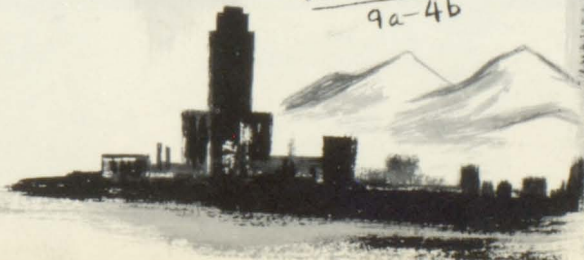
## *Foreword*

High school years are precious years; they are treasures to be remembered as we go forth to seek our destiny. May the years ahead of us be as happy as those we are leaving behind, and may those who follow have as many fond memories of E.H.S. as we do. We, the senior class of 1960, hold in our hand the key - the golden key to the future.





6a-5Vab-6b  
9a-4b





#### SCHOOL BOARD

LEFT TO RIGHT: Alice Balcombe, Clerk; Ernest Armbruster, Treasurer; Dr. G. A. Surface, Director; Paul Augustine and Phil Nicholson, Board Members.

## *School Board and Administration*

MILLER'S IGA  
Your Home Town Grocer



E. A. FITZGERALD  
Superintendent

GEORGE BRAY  
Principal





MARGARET EPPS  
Physical Ed.  
English



DeROY ROGGE  
Music



ARLIN MILLS  
Science  
Mathematics

*Best of luck to you.  
You've been wonderful  
help in the  
library this  
year! Keep  
your pep and  
friendly  
attitude.  
Helen Gurtler*



HELEN GURTLER  
English  
Library



JAMES STANSBURY  
Physical Ed.  
Football



LOIS CUMMINGS  
Commerce



LeROY HIPKINS  
Social Science  
Guidance



MARY ANN RUPP  
English  
Journalism

*Best of luck!  
Helen Gurtler*



RICHARD WEAVER  
Speech  
English



ROBERT SCHNEIDER  
Agriculture

*Pattie: I do hope you go  
on studying Spanish - you  
have shown aptitude to learn  
and speak a language - and you  
are interested and enthusiastic  
and you can be  
appreciated. Do  
it up!  
Alice Balcombe*



ALICE BALCOMBE  
Languages  
Mathematics



LEWIS HITCH  
Science  
Basketball



LAURA McNAMES  
Home Economics

*Best of luck!  
Laura McNames*



LESTER KNOLL  
Social Science



JIMMY MARTIN  
Manual Arts



### Bus Drivers



LEFT TO RIGHT: Lawrence Shubert, Eddie Waldschmidt, Frank Augustine, Herman Keller, and Ray Eaton.

### Secretary



Mrs. Marjorie Wiesner

## *Other Employees*

### Custodians



LEFT TO RIGHT: Robert Homler and Blair Furbeck.

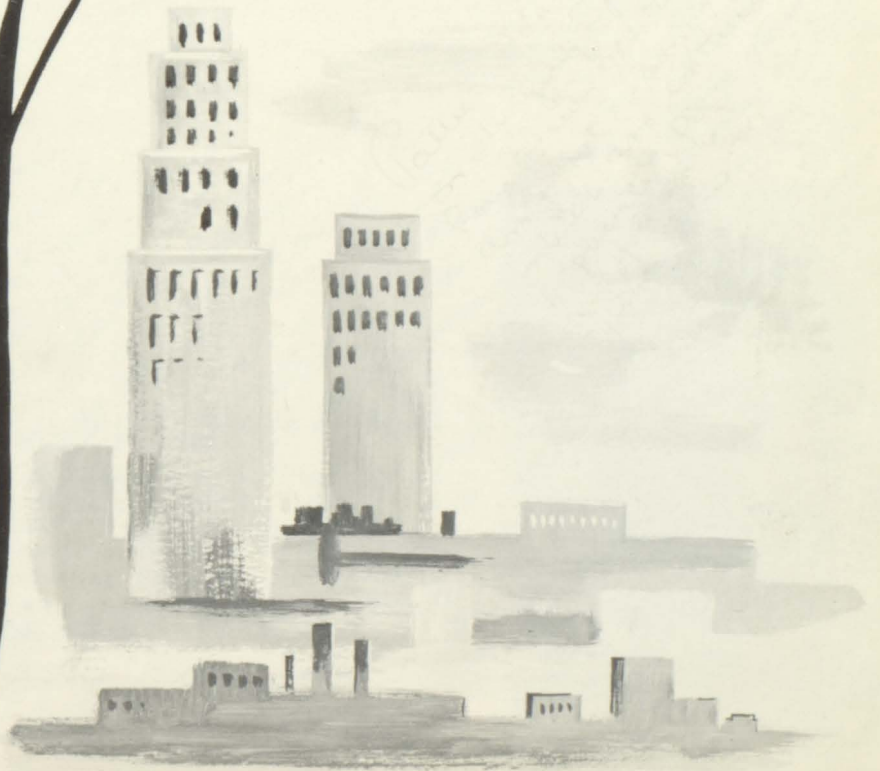
### Cooks



LEFT TO RIGHT: Mrs. Liz O'Rourke, Mrs. Mary Kelsch, Mrs. Margaret Fondoble, and Mrs. Wilma Schumacher.



*graduates*





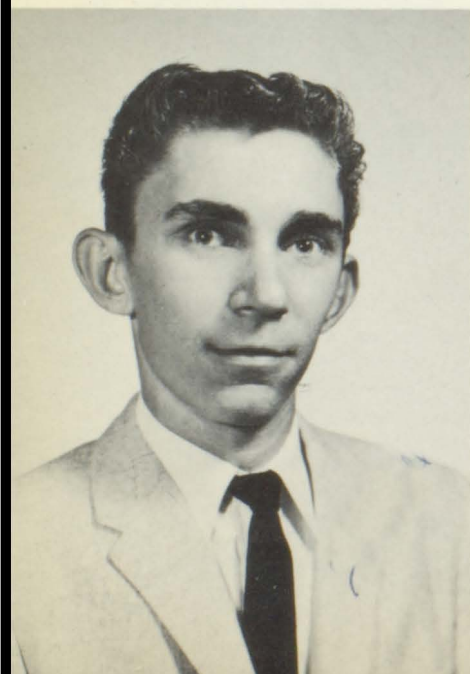
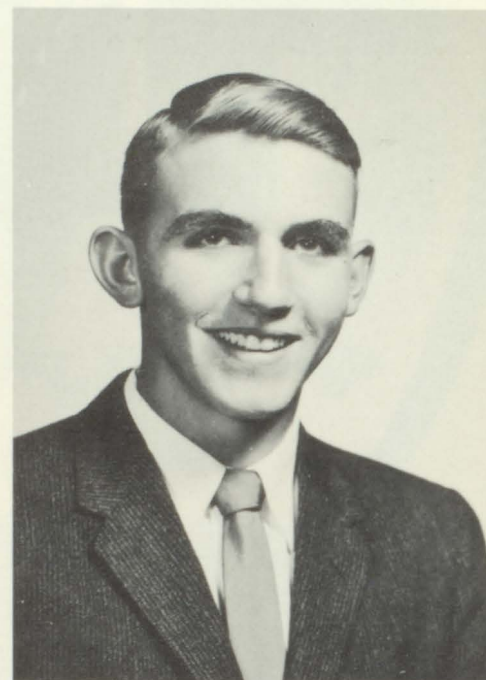


BILLIE LEE ALLEN

Student Council Secretary 4; Representative 1; Girls' Glee 1,2,3,4; Orange and Black Chorale 1,2,3,4; Special Chorus 4; Music Contest 1,2,3,; Girls' Triple Trio 2; Girls' Sextet 2; Band 1,2,3,4; Pep Band 2,3,4, President 4; Kayettes 3,4; Board of Directors 2,3; Kayette Conference 3; Y-Teens 1,2, Cabinet 1,2; Junior Play; Senior Play; Forensic Play 1; Volleyball Tournament 4; Snowball Attendant 3; Prom Server 2; Girls' State 3; Scholastic Award 2,3; Speech Contest 1,2,3,4; Play Oscar 1; Annual Staff 4.

VERLIN ARMBRISTER

F.F.A. 1,2,3,4; Representative 4; Kays 4; Basketball 3,4.



DARRELL ARMBRUSTER-(D A)

Boys' Glee 1,2,3,4; Orange and Black Chorale 1,2, 3,4; F.F.A. 1,2,3,4, Treasurer 3,4; Kays 3,4; Pep Club 4; Railroader Staff 4.



Patty  
Best of luck  
in the future to  
a girl with the most  
wonderful personality. I don't  
know you very well but from  
what I've heard you are very nice  
well liked. Keep smiling at everybody.  
May God bless you in the future. I yearn  
to come.

GLADYS AUGUSTINE

Girls' Glee 1,2,3,4; Pep Club 3,4; Kayettes 3,4;  
Y-Teens 1,2; Senior Play; Snowball Server 1.

Gladys



Patty, I kinda  
hate to leave school  
its been fun there  
years. Best of luck  
to a very nice girl  
and Spanish classmate.  
a senior  
Jerry

JEROME AUGUSTINE-(Jerry)

Boys' Glee 4; Pep Club 4; Scholastic Test 3.



(Cont.)  
Remember the time we  
went with B. Brown to Smith  
Center and we tried to eat  
on the way down. There  
were 4 of us in back  
plus the food, cheerleading  
skirts were all mess  
up. All good  
things must come from  
and some or later. I'll  
miss you so damn much  
next year. I hope we  
always remain the best  
of friends. Best  
luck + God Bless  
you.  
Always  
Jerry

Pattie  
Hi doll! Look  
I could write pages and  
still never completely  
tell you about all the good  
times we've had together. Cheers -  
what a blast! I'll remember  
leading days forever. you and Diane  
Remember the slumber parties at your house,  
the times we'd all come  
up and eat and laugh  
until we thought we'd  
split our guts. Oh - it  
was all a ball. Now  
all that remains are  
the fond memories. I'll  
have to finish  
down here!

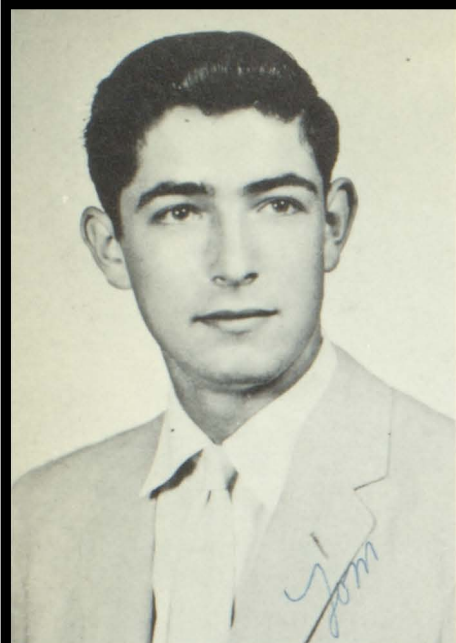
MARY JANE AUGUSTINE-(Janie)

Class Treasurer 4; Girls' Glee 1,2,3,4; Y-Teens 1,  
2; Kayettes 3,4, Board of Directors 4; Pep Club 3,  
4; Junior Play; Senior Play; Homecoming Attendant 4;  
Snowball Attendant 4; Prom Server 2; Cheerleader 4;  
Scholastic Tests 1; Typing Award 4; Girls' State 3;  
Play Oscar 3; Annual Staff 4.

All those board meetings where we  
never did anything but laugh - but yet  
we accomplished so much - or did we?  
Then there was all the fun we had during  
the games - especially tournaments. Continued  
above







THOMAS BEACH-(Tom)

Transfer from California 2; Track 3.

*I'm not the best writer,  
but so-long to a swell  
girl and I hope you have  
as good a time as I  
did. Tom Beach*

*Patty*

*Best of luck to good  
kid. May you always  
have happiness. God  
bless you.*

*Barbara B*

BARBARA BITTEL-(Barb)

Class President 2,4; Class Treasurer 3; Pep Club 2,3,4; Girls' Glee 1,2,3,4; Y-Teens 1; Kayettes 3,4, Board of Directors 3; Twirp Week Attendant 2; Junior Play; Scholastic Tests 2,3; Typing Award 4; Annual Staff 4; Office Girl 4.



WAYNE BLACKBURN-(Pedro)

Class President 1; Vice President 3,4; Representative 2; Kays 3,4; Board of Directors 3; Vice President 4; Pep Club 4; Football 1,2,3,4\*; Basketball 1,2,3,4\*; Twirp Week Attendant 1; Prom Server 2; Scholastic Tests 1,2,3,4; Annual Staff 4.



JOANNE BONGARTZ

Girls' Glee 1,2,3,4; Band 1,2,3,4; Y-Teens 1,2; Pep Club 4.



GERALD BOOS-(Bozo)

F.F.A. 1,2; Reporter 2; Kays 4; Track 1; Typing Award 4.

WILMA CHAPMAN-(Wilm)

Transfer from Gove 4; Band 4.





*Pathe  
Best of luck to a very sweet  
girl, I guess you've got about as  
much energy as anyone I know.  
Stay with the books  
and stay a pretty as you  
are and I'm  
sure the  
best will  
come to you, oh yes don't let  
Barbara get the best of you that  
could be fatal. God Bless You  
Dean Sr. '60*

DEAN DENNING-(Dino)

Transfer from Wakeeney 2; Class President 3;  
F.F.A 2,3,4, Reporter 4; Kays 3,4; Pep Club 4;  
Track 3,4; Scholastic Tests 2,3; Carl Raymond  
Greg Scholarship 3; Railroader Staff 3; Annual Staff  
3,4.

DARLENE DINKEL-(Dee Dee)

Girls' Glee 1,2,3,4; Y-Teens 1,2; Kayettes 3,4; Pep  
Club 4; Typing Award 4; Railroader Staff 4; Annual  
Staff 4; Office Girl 4.



MARLENE DINKEL-(Dink)

Girls' Glee 1,2,3,4; Y-Teens 1,2; Kayettes 3,4; Pep  
Club 4; Gymnastic Award 3; Volleyball Tournament 4;  
Railroader Staff 4; Annual Staff 4; Office Girl 4.





MARY DORZWEILER-(Dishie)

Girls' Glee 1,2,3,4; Y-Teens 1,2; Kayettes 3,4; Pep Club 1,3,4; Vice President 4.



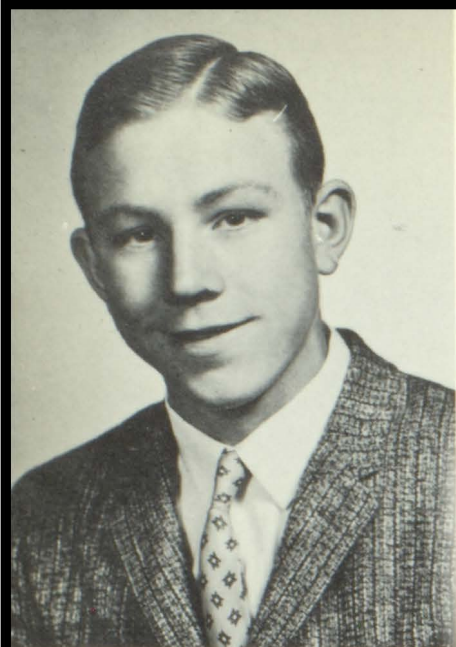
BARBARA DOUGLAS-(Babs)

Girls' Glee 1,2,3,4; Y-Teens 1,2; Kayettes 3,4; Pep Club 1,2,3,4; Volleyball Award 1; Railroader Staff 4; Annual Staff 4.

BARRY DUBACH-(Jet)

Boys' Glee 4; E-Club 1,2; Kays 3,4; Basketball 1, 2,3; Railroader Staff 4.



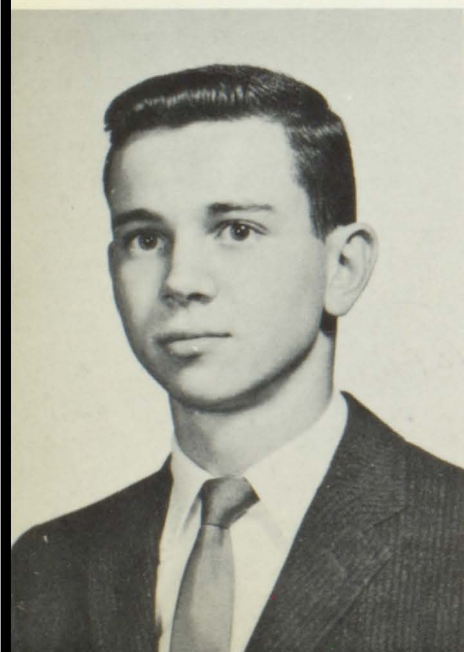


DOUGLAS ENGEL-(Doug)

Transfer from Brownell 2; Scholastic Tests, Honorable Mention in Geometry 3.

LILLIAN FISHER-(Lil)

Girls' Glee 1,2,3,4; Y-Teens 1,2; Kayettes 3,4; Pep Club 3,4; Prom Server 2; Railroader Staff 4.



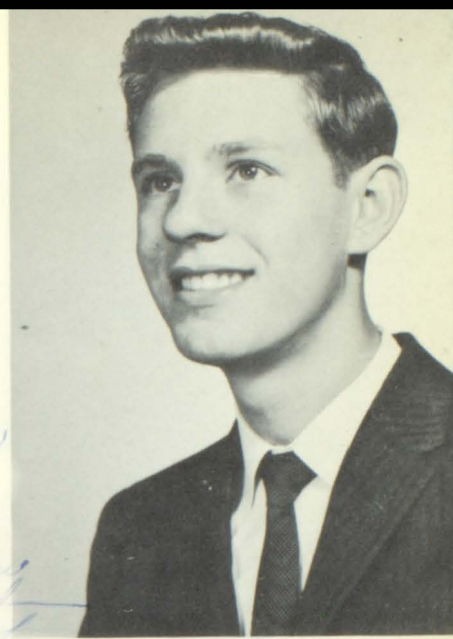
TERRY FITZGERALD-(Fitzie)

Class Vice President 1; Student Congress 4; Boys' Glee 1,2; Band 1,2; Pep Band 2; F.F.A. 1,2,3, Secretary 1, Representative 2; Junior Play; Senior Play; Track 1; Basketball 1; Boys' State 3; Speech Contest 2; Rifle Club 1.



GARNIS HAGEN-(Poncho)

Class Representative 4; Boys' Glee 1,2,3,4; Orange and Black Chorale 2,3,4; Special Chorus 4; Boys' Quartet 3; Band 1,2,3; Pep Band 2,3; Dance Band 3; Music Contest 2,3; Kays 3,4, President 4, Board of Directors 3, Kay Conference 3,4; Junior Play; Senior Play; Play Oscars 1,3; Basketball 1,2; Boys' State 3; Speech Contest 1,2,3; Scholastic Tests 2,3; Annual Staff 4.



ERNEST HONAS-(Ernie)

F.F.A. 1,2,3,4, Sentinel 2, Secretary 3, President 4; Kays 3,4, Representative 4, Board of Directors 4; Pep Club 4; Junior Play; Senior Play; Football 1,2, 3,4\*; Track 1,2,3,; Basketball 1,2,3\*4\*; Homecoming Attendant 4; Prom Server 2; Railroader Staff 4; Annual Staff 4; Volleyball Awards 1,3.

WILLIAM HONAS-(Horny)

Class Representative 1,2,3; Student Congress President 4; Kays 3,4, Treasurer 3, Board of Directors 4; Pep Club 4; E-Club 1,2; Pep Club 4; Junior Play; Football 1,2\*,3\*,4\*; Track 1,2\*; Basketball 1,2\*, 3\*,4\*; Homecoming Attendant 4; Prom Server 2; Scholastic Tests 3; Volleyball Awards 2; Annual Staff 4.





CAROL KING

Class Secretary 4; Girls' Glee 1,2,3,4; Y-Teens 1, 2; Kayettes 3,4; Pep Club 1,2,3,4; Senior Play 4; Snowball Server 1.

BONNIE KINGSLEY

Class Representative 1,4; Band 1,2,3,4; Pep Band 1,2, 3,4; Orange and Black Chorale 3,4; Special Chorus 4; Music Contest 1,2,3,4; Y-Teens 1,2, Y-Teens Secretary 2; Pep Club 1,2,3,4; Kayettes 3,4; Kayette Board of Directors 3,4; Junior Play; Senior Play; Volleyball Tournament 4; Gymnastic Award 2; Prom Server 2; Snowball Server 2; Kayette Camp Queen 3; Scholastic Tests 3; Annual Staff 4; Cheerleader 2, Head Cheerleader 3,4; Majorette 1,2,3; Girls' Triple Trio 2; Girls' Sextet 3.



EDNA LOFLIN

Girls' Glee 1,2,3,4; Y-Teens 1,2; Kayettes 3,4; Pep Club 1,2,3,4; Annual Staff 4.



DONNA LUEA

Girls' Glee 1,2,3,4; Y-Teens 1,2; Kayettes 3,4; Pep Club 4; Prom Server 2; Railroader Staff 4; Office Girl 4.



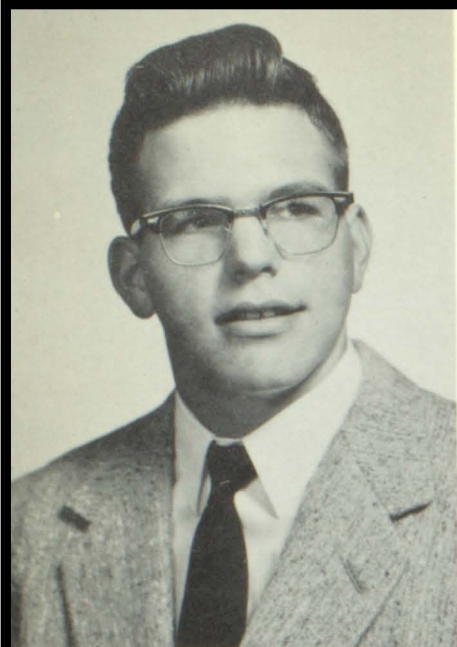
LOLA LUEA

Class Secretary 3; Girls' Glee 1,2,3,4; Kayettes 3,4; Pep Club 2,3; Junior Play; Homecoming Attendant 4; Prom Server 2; Typing 4; Railroader Staff 4; Annual Staff 4.

BARBARA PFIEFER-(Bobbi Ann)

Class Secretary 1,2; Band 1,2,3,4; Pep Band 1,2,3; Girls' Glee 1,2,3,4; Orange and Black Chorale 1,2,3,4; Girls' Triple Trio 2; Girls' Sextet 3; Special Chorus 4; Music Contest 1,2,3,4; Y-Teens 1,2, Y-Teen Chairman 1; Kayettes 3,4, Kayette Board of Directors 3; Pep Club 1,2,3,4, Pep Club President 3, Representative 4; Junior Play; Senior Play; Gymnastic Award 3; Volleyball Tournament 4; Twirp Week Attendant 1; Prom Server 3; Typing Award 4; Annual Staff 4; Cheerleader 3,4.





RAY PINNEY-(Stanley)

Class Vice President 2; Representative 3; Kays 4; Pep Club 4; Football 1,2,3,4\*; Track 1,2\*; Basketball 2, Manager 3; Prom Server 2.



MAC REED-(Speed Reed)

Boys' Glee Accompanist 1,2,3,4; Orange and Black Chorale 3,4; Band 1,2; Dance Band 1,2; Pep Band 1,2; Music Contest 2,3,4; Special Chorus 4; Kays 3,4; Board of Directors 3,4; Pep Club 4; Senior Play; Scholastic Tests 3; Railroader Staff 4, Editor; Annual Staff 4; Rifle Club 1.



MARILYN SCHOENBERGER

Transfer from Wakeeney 3; Girls' Glee 3; Kayettes 3,4, Kayette Board of Directors 4; Junior Play; Homecoming Queen 4; Twirp Week Attendant.



Pattie- You are one of the E.A.S. students who made my brief stay at E.A.S. a very enjoyable year. I was so pleased and surprised when you invited me to your slumber party the night before the State Fair. I'll never forget that delicious fudge! Whenever I think of you, I think of the Junior Play. Really, I never laughed so much in all my life as when you'd cross the stage!

BARBARA SHIRK-(Barb)

Transfer from Stafford 4; Girls' Glee 4; Band 4; Pep Band 4; Pep Club 4; Kayettes 4, Kayettes Representative 4; Annual Staff 4, Editor; Railroader Staff 4, Assistant Editor 1.



Well, I'm running out of space so I'll wish you the best life has to offer. You're a sweet, cute, friendly, and talented girl; keep your vitality and sense of humor and you'll find happiness. A friend and fellow band member,  
Barb Shirk



BETTY STORM-(Betts)

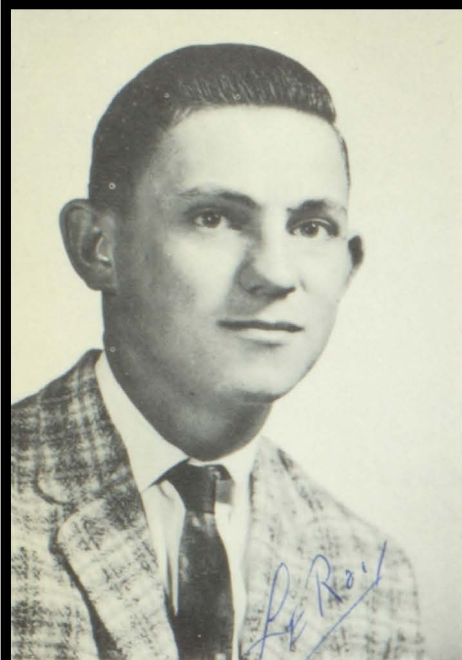
Girls' Glee 1,2,3,4; Y-Teens 1,2; Kayettes 3,4; Pep Club 1,2,3,4; Railroader Staff 4.

BETTY WASINGER

Girls' Glee 1,2,3,4; Y-Teens 2; Kayettes 3,4; Pep Club 2,3; Typing Award 4; Office Girl 4.

Pattie  
The best of luck in your Senior year and everything else you do. It's been nice knowing you.  
Betty





LeROY WEAVER-(Piff)

Kays 4; Pep Club 4; Basketball 1; Volleyball Award 3;  
Railroader Staff 4.



HARRY WEBER-(Amos)

Boys' Glee 4; Kays 3,4; Board of Directors 4;  
E-Club 2; Junior Play 3; Football 1,2\*,3\*,4\*; Basket-  
ball 1,2\*,3\*,4\*; Homecoming King 4; Prom Server  
2; Railroader Staff 4; Annual Staff 4.

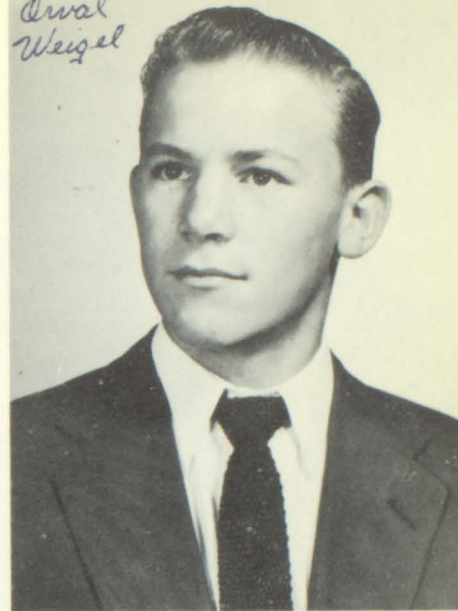


KAY WEBER

Girls' Glee 2,3,4; Pep Club 4; Kayettes 3,4; Rail-  
roader Staff 4; Y-Teens 1,2.

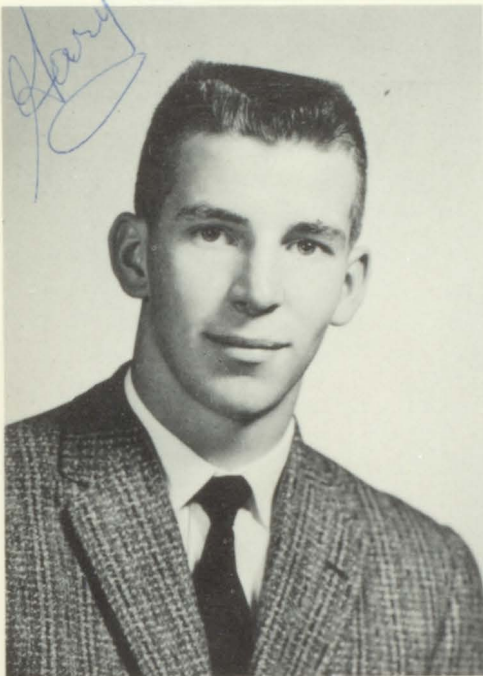


Orval  
Weigel



ORVAL WEIGER-(Ole' Orval)

Boys' Glee 1,2; Orange and Black Chorale 3,4; Band 1,2,3; Pep Band 2,3; Music Contest 3; F.F.A. 1,2,3,4; Reporter 3; Secretary 4; F.F.A. Leadership School 4; Kays 4; Pep Club 4; Scholastic Tests 2,3; Annual Staff 4.



GARY WENTLING-(Goose)

Class Representative 2,3; Boys' Glee 4; F.F.A. 1, 2,3; Vice President 3; Kays 3,4; Board of Directors 3,4; E-Club 2; Pep Club 4; Junior Play 3; Football 1,2\*,3\*,4\*; Prom Server 2; Railroader Staff 4.

Patric:

Best of luck to a heck-of-a-good Junior Girl, and here is a little advice "have all the fun you can next year, because it goes entirely to fast, "Be Good" Senior of '60  
Gary Wentling

KATHLEEN WINDHOLZ-(Kathy)

Girls' Glee 1,2,3,4; Y-Teens 2; Kayettes 3,4; Pep Club 2,3; Typing Award 4; Railroader Staff 4.





ARLIN MILLS  
Sponsor



MARY ANN RUPP  
Sponsor



RICHARD WEAVER  
Sponsor



## *Class History*

We the senior class of 1960 of Ellis High School began with 45 freshmen in September 1956.

Members of our class were: Wayne Blackburn, Terry Fitzgerald, Billie Lee Allen, Bill Honas, Bonnie Kingsley, Barbara Pfeifer, Darrell Armbruster, Verlin Armbrister, Jerry Augustine, Bernita Augustine, Gladys Augustine, Mary Jane Augustine, Barbara Bittel, Joanne Bongartz, Darlene Dinkel, Marlene Dinkel, Mary Dorzweiler, Barbara Douglas, Barry Dubach, Douglas Engel, Lillian Fisher, David Fischer, Garnis Hagen, Rosita Herman, Ernie Honas, Beverly Keagy, Carol King, Ronnie King, Edna Loflin, Donna Luea, Lola Luea, Ray Pinney, Mac Reed, Larry Rowland, Al Rupp, Betty Storm, Betty Wasinger, Gary Wentling, Harry Weber, Kay Weber, Cecilia Weigel, Orval Weigel, LeRoy Weaver, Kathleen Windholz, and Kay Young.

Our class officers were: President, Wayne Blackburn; Vice President, Terry Fitzgerald; Secretary-Treasurer, Barbara Pfeifer; Representatives, Bill Honas, Billie Lee Allen, and Bonnie Kingsley. Our class sponsors were Mr. Baker and Mr. Crawford.

We began our sophomore year with the loss of Douglas Engel, Cecilia Weigel, and Kay Young, and we gained Dean Denning, Tom Beach, and Darrell Moore which made us a total of 45.

Our class officers for that year were: President, Barbara Bittel; Vice President, Ray Pinney; Secretary-Treasurer, Barbara Pfeifer; Representatives, Bill Honas, Gary Wentling, and Wayne Blackburn. Our sponsors for that year were: Mr. Crawford and Mrs. Long.

Our money making projects that year were the food sales we held.

When we began our junior year we had 42 students with the loss of Larry Rowland, Tom Beach, Al Rupp, Bernita Augustine, and Rosita Herman, Beverly Keagy, and Darrell Moore but we gained Shirley Augustine, Marilyn Schoenberger, Mary Bradshaw, and Douglas Engel.

Our class officers for our junior year were: President, Dean Denning; Vice President, Wayne Blackburn; Secretary, Lola Luea; Treasurer, Barbara Bittel; Representatives, Bill Honas, Ray Pinney, and Gary Wentling. Our class sponsors were: Mr. Mills, Mr. Hipkins, and Mr. Rogge.

Our money making projects for that year were: Junior Play, concessions during the football and basketball games, and the dances after the games. Our float won first prize "Orchids to Our Team." Our big event of the year was our Junior-Senior Prom with the theme "Gay Paree." We also chose our class colors, mint green and silver, and our class flower, the lily. Our motto is "Let him who deserves it, reap the reward."

We began our senior year with the loss of Mary Bradshaw, Shirley Augustine, David Fischer, and Ronnie King, but we gained Tom Beach, Gerald Boos, Wilma Chapman, and Barbara Shirk. Our officers were: President, Barbara Bittel; Vice President, Wayne Blackburn; Secretary, Carol King; Treasurer, Mary Jane Augustine; Representatives were Bonnie Kingsley, Garnis Hagen, and Terry Fitzgerald. Mr. Mills, Mrs. Rupp, and Mr. Weaver were our class sponsors. Our Senior Play, "Drums of Death," was held on Friday, November 13th. The seniors will take their last walk in the high school at Commencement on May 20, 1960.

Snapshots





Dear Pat.  
 You were the  
 one who  
 came up  
 with the  
 BRILLIANT  
 idea of  
 writing  
 in the  
 U. So  
 I'll have  
 it done  
 OK

Yes, this  
 year has  
 been a  
 B. A. S. T.

I'll never  
 forget it.  
 Especially  
 to be here  
 and all  
 we talked  
 I guess  
 SHE'S got  
 HIM! But  
 good.

Thanks

No he  
 good this  
 summer.  
 Will have  
 to get together  
 during  
 the next  
 three months.

Love,  
 Judy  
 Feb. 1954

# ndergrads

Dear Pattie

Well, this year  
 went fast and  
 just think next  
 year you'll be an  
 almighty senior.  
 Lucky? ?? Do  
 Best of luck  
 to a girl who  
 has a wonder-  
 ful sense of humor  
 & a real sweet  
 smile. God Bless  
 you always.

Quayle







BUD CAMPBELL, President  
JIM AUST, Vice President  
JULIE NICHOLSON, Secretary  
JACKIE STEBBINS, Treasurer  
DIANNE KELLER



RICKY BROWN, Representative  
DWAYNE ASHBAUGH, Representative  
MISS LAURA McNAMES, Sponsor  
MR. DeROY ROGGE, Sponsor  
MR. LeROY HIPKINS, Sponsor



MR. JIMMY MARTIN, Sponsor  
MARY ANN AUGUSTINE  
NORMA BONGARTZ  
LORRENE BROWN  
JOYCE DEUTSCHER



VIRGINIA DINKEL  
CLARA FANSHIER  
BARBARA FLAX  
LINDA HALL  
MICKEY HENDERSON



STELLA HONAS  
MARGARET HUBER  
LOIS KINDERKNECHT  
VIOLA KUTINA  
DORIS LUEA



CAROL MAYES  
PATTY PFEIFER  
GLORIA SCHOENBERGER  
SUSAN SCOTT  
JULIA SHIRCK

## Juniors

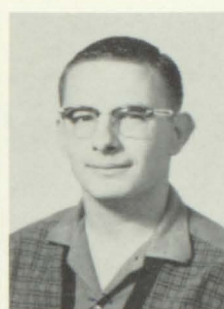




*Pattie Well, another year has past. I wish that it was so easy to be profitable with it. I don't have to feel like I'm passing. The best of luck to a real friend, classmate. God bless you. Teresa Jr. 59-60*



VERGIL AUGUSTINE  
DENNIS BOOS  
KENNETH DEUTSCHER  
JERRY DREILING  
DAVID ERBERT



WARNER ERTL  
GARY GERBER  
DANIEL GESCHWENTNER  
KENNETH HLADEK  
RONNIE HUBBS



LeROY JACOBS  
JOHN JACQUES  
THOMAS KINDERKNECHT  
DAVID KINGSLEY  
ROBERT KOHLRUS



SIGFRIED LANG  
NORMAN RUPP  
VIRGIL SCHUSTER  
RICHARD WEBER  
KENNETH WINDHOLZ

*Pattie - Best of luck to one of the cutest girls in our class. You were really good in the Jr. Play. Again Best of luck.*

*Carol A fellow Classmate*

*Pattie, It's been a long hard climb but we've finally made it. Next year we'll be Almighty Seniors! I've enjoyed going to school with you these past years and look forward to our senior year.*

*Just me, Lois Sr. 1961*



JUNIOR



OFFICERS

## *Junior Highlights*

The Junior class officers elected for '59 and '60 included Bud Campbell, President; Jim Aust, Vice President; Julianne Nicholson, Secretary; and Jackie Sue Stebbins, Treasurer. Dave Kingsley, Diane Keller, and Dwayne Ashbaugh served as representatives for the class.

Our class captured first place in the homecoming float contest with our float entitled "Blast 'Em." We held our Junior Assembly on January 22nd and presented films to the student body.

The Junior class has purchased their class rings. Two other highlights of the year were the Junior Play and the Junior-Senior Prom. Our class sponsors were Miss McNames, Mr. Rogge, and Mr. Hipkins.

Snapshots



WIESNER'S  
Ladies' and Men's Ready-to-Wear - Dry Goods  
Fresh Meats and Groceries





PHILIP NICHOLSON, President  
 JACK BALCOMBE, Vice President  
 JOY KELLOGG, Sec.  
 KATHLEEN HAMBURG, Treas.  
 BARBARA MAY, Rep.



BRUCE FELDKAMP, Rep.  
 JEANNE RIFFEL, Rep.  
 MR. LEW HITCH, Sponsor  
 CYNTHIA BITTEL  
 NANCY BRAY



BARBARA BROWN  
 BEULAH FISCHER  
 HELEN GESCHWENTNER  
 PHYLLIS GNAD  
 GLORIA HELGET



JUDY HELGET  
 PHYLLIS JOHNSON  
 MARGARET KELLER  
 ELAINE KING  
 ANN KOHL



ROSE ANN LANG  
 PAULETTA LUEA  
 VICKY ROMEY  
 OLIVIA SNIDER  
 JEANNE STORM



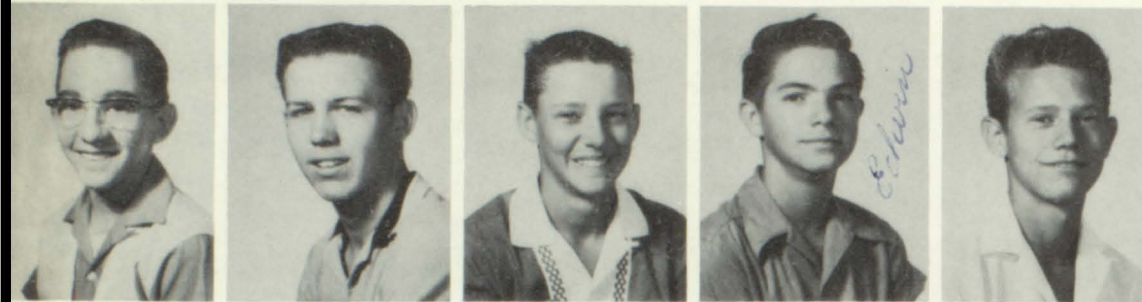
MARY SUE WALTERS  
 BETTY JO WEAVER  
 SHIRLEY WEBER  
 ELGERINE WEIGEL  
 CAROL WIESNER

# Sophomores

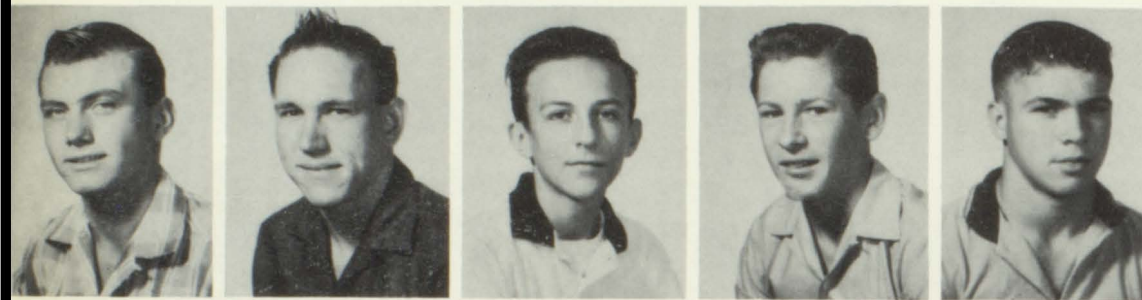




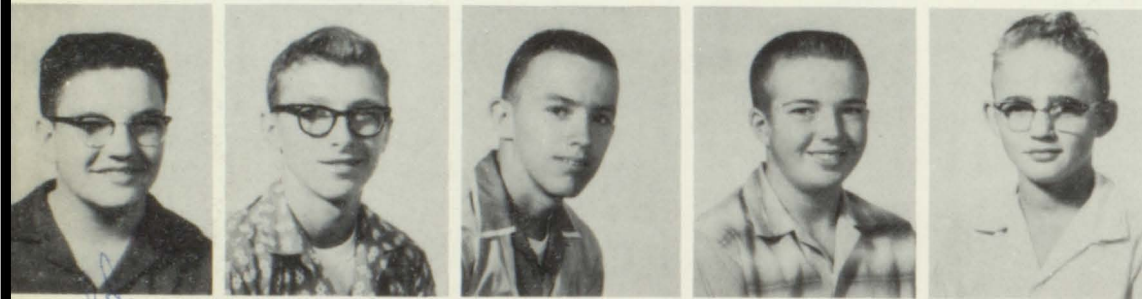
CYNTHIA YOUNG  
ALVIN ARMBRISTER  
RONALD ARMBRUSTER  
JAMES ARMENTROUT  
DONALD BIEKER



ALFRED BOLLIG  
RALPH BURNS  
EDWARD DINKEL  
EDDIE DORZWEILER  
EDDIE DOUGLAS



VERLIN ENGEL  
EMMETT FULLER  
GARY GIBSON  
MICHAEL HAAS  
DAVID HAYS



ALLAIRE HOMBURG  
JERRY KELLER  
GARY MILLER  
RICHARD RIDGWAY  
CLARENCE RUPP



HAROLD SCHMIDT  
ROBERT SCHMIDT  
DAVID SCHOECH  
RICHARD WALDSCHMIDT  
RONALD ZACHMAN

*- Father -  
I will always  
remember all the fun  
we had helping you finish  
winning. I don't think I'll  
forget about the rides  
you and Rick gave  
me. When there  
were all the fun  
times we had. I  
Spanish before  
I got moved. I'd  
lost of luck to a  
real cute upperclassman.*

*Bruce*

*Best of luck to  
a real sweet girl.  
Cynthia  
Dorweiler*



# Sophomore Highlights

Some of the accomplishments of the sophomore class this year were selling popcorn and candied apples at the football games and claiming second place on their Homecoming float boasting the theme "Viva la Ellis." In October, the class gave a variety assembly, and enjoyed a class party January 15th.

Those holding office in the sophomore class included: Phil Nicholson, president; Jack Balcombe, vice president; Joy Kellogg, secretary; Kathy Hamburg, treasurer; and Barbara May, Jeannie Riffel, and Bruce Feldkamp Student Congress representatives.



SOPHOMORE OFFICERS



DEUTSCHER GROCERY  
Open Sundays & Evenings



MAX THE CLEANER  
And Laundry



*Pattie,  
Best of luck to a  
vibrant upperclassman.  
Keep up the pep and  
big smile and you'll  
always be well liked.  
I'll always think of you  
when I think of the prom  
and the limos. I really  
did like mine after I got  
it home & tried it on.  
Bye now & to-be  
from a Jo to her  
Kathy Hamburg*







LINDA GURTLE, President  
LARRY MALLORY, Vice Pres.  
MARTHA BEALS, Sec.  
KAY REEVES, Treas.  
DENNIS WOLF, Rep.



ANN NELSON, Rep.  
ELLEN ARMBRUSTER, Rep.  
MRS. HELEN GURTLE, Sponsor  
MR. LES KNOLL, Sponsor  
ROSELIN AUGUSTINE



NANCY BAUGHER  
LYNDA BONGARTZ  
GEORGIA CRAWFORD  
JUDY DORZWEILER  
CLAUDIA DEUTSCHER



JOLEEN DEUTSCHER  
DIANE DREHER  
JUDITH ERBERT  
BERNADINE FISCHER  
LOU ANN FISHER



ANITA FRANTA  
VIRGINIA GABEL  
MARILYN HAAS  
REGINA KOHLRUS  
BETTY JEAN LANG



CAROL LORIMOR  
MARY ANN MAYES  
KAREN PTASCHEK  
JUANITA ROTH  
CAROL SEIBEL

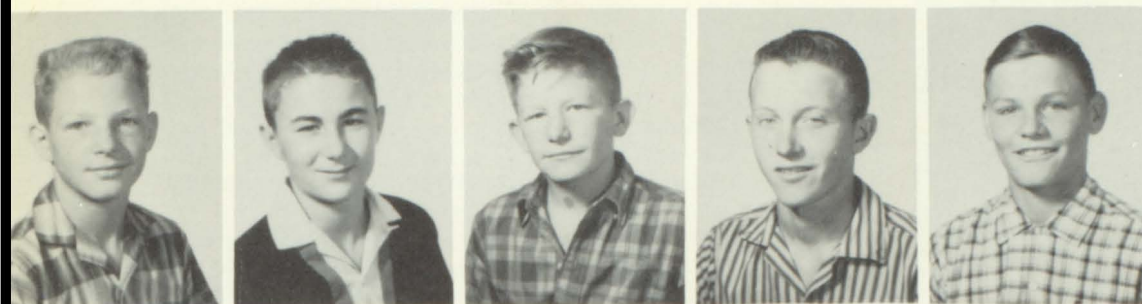
Best of  
luck -  
Always

*Freshmen*





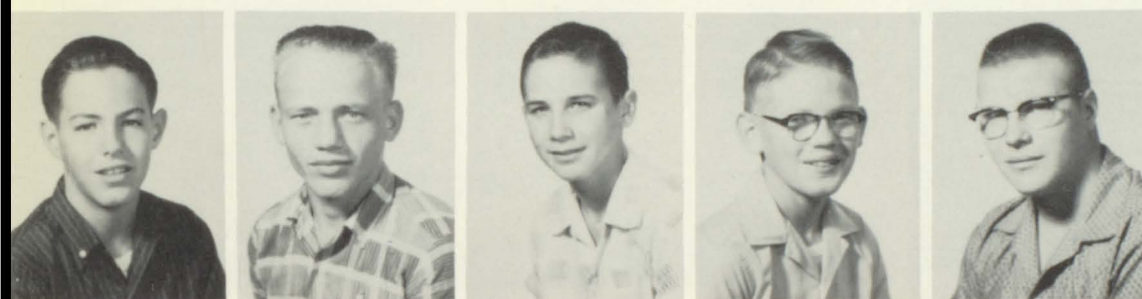
ROSETTA SCHMIDT  
LOIS ANN SCHUSTER  
BARBARA VINE  
PHYLLIS WEBER  
NORMA WEBER



HAROLD ARMBRISTER  
JOHN ARMBRUSTER  
RICHARD BATTIN  
MARK BOOS  
GEORGE CRAWFORD



JOHN HELGET  
ROBERT JACQUES  
SKIPPER MATTESON  
RONALD MILLER  
RICHARD ROBERTS



STEPHEN ROPER  
ANTON RUPP  
BILLY SEIBEL  
JAMES SHIRCK  
FRANK STADELMAN



DAVID WIESNER





FRESHMAN OFFICERS

## *Freshman Highlights*

The freshman class gained twenty-four new members this year which swelled the total to forty-five. One member, Tom Bradshaw, left shortly after school began in the fall.

Under the able direction of the sponsors, Mr. Knoll and Mrs. Gurtler, the class elected Linda Gurtler, president; Larry Mallory, vice president; Martha Beals, secretary; and Kay Reeves, treasurer. Ellen Armbruster, Ann Nelson, and Dennis Wolf served as Student Congress representatives.

Various activities sponsored by the class included a homecoming float, a Hobo Day, an all-school assembly in the form of a talent show, and the class Christmas party.

The freshman cheerleaders elected were Ann Nelson, Carol Seibel, Bernadine Fischer, Anita Franta and Carol Lorimor.



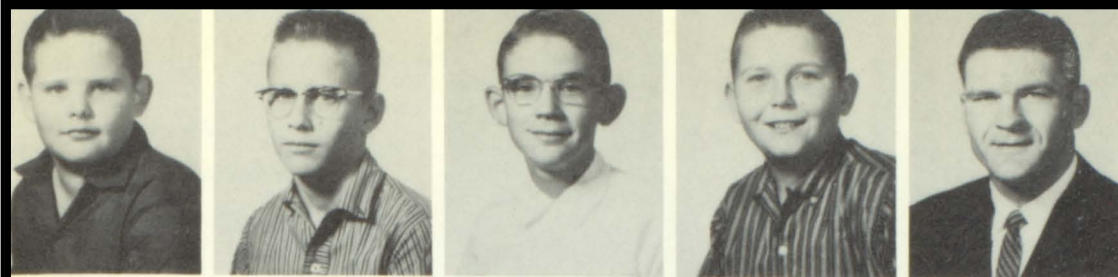
NELSON'S FOOD MARKET

GESCHWENTNER JEWELRY  
BEAUTY BUNGALOW

FRESHMAN CHEERLEADERS







RICHARD ROBERTSON  
President  
STEVEN DEUTSCHER  
Vice Pres.  
DOUGLAS BALCOMBE  
Sec. and Treas.  
TERRY SCHOENTHALER  
Rep.  
MR. CLIFF STANSBURY  
Sponsor



LINDA BOSCHOWITZKI  
PEGGY BLACKBURN  
MARY ANN DINKEL  
BRENDA DIRKS  
PEGGY DOUGLAS



SANDY FULLER  
CAROL HUBER  
SHERRY OLMSTEAD  
SHERYL SIMMINGER  
WILLIAM ARMBRISTER, JR.



JERRY ARMBRUSTER  
PAUL ARMBRUSTER  
DONALD BENNETT, JR.  
RICHARD FRIES  
JAY C. HAYS



DOUGLAS HURT  
DONALD MAIER  
LEON MAY  
VERLIN SCHUSTER  
DICK WEATHERHOLT



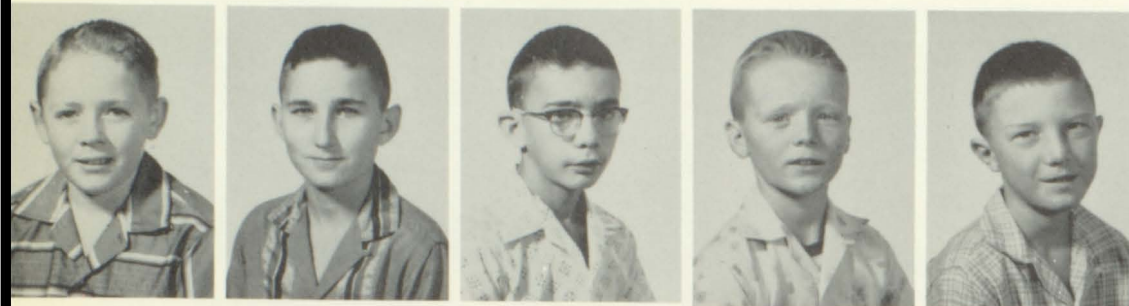
DOUGLAS YOUNG

## *Eighth Grade*





DUANE KELLER  
President  
BILLY KING  
Vice-Pres.  
CHERYL SCHOENTHALER  
Sec. Treas.  
CINDY WHEELER  
Rep.  
MRS. ALICE BALCOMBE  
Sponsor



WARREN ALLEN  
GREGORY ARMBRUSTER  
GILBERT AUGUSTINE  
DAVID BENNETT  
JOHN CORDER



DAVID DEUTSCHER  
CHARLES HORNER  
GLEN KROEGER  
ROGER LANDAUER  
ART NIERNBERGER



JIM SCOTT  
SHARON ALLOWAY  
CHERYL BAILEY  
MARY JO BEALS  
KAY HONAS



BARBARA HUFFMAN  
CONNIE HUFFMAN  
CHARLENE JONES  
JOYCE LONGLEY  
ELIZABETH MACKENDER



BETTY MAYES  
JOYCE ROBERTS  
SHARON ROBERTS  
ALETA SCHUMM  
LUE SNIDER



## Seventh Grade

SALLY STEEL  
SONDRA SUTTON





# ctivities







FRONT ROW: Mr. Fitzgerald, Sponsor; Billie Lee Allen, Secretary; Bill Honas, President; Dave Kingsley, Vice President; Mr. Bray, Sponsor. SECOND ROW: Verlin Armbrister, Garnis Hagen, Terry Fitzgerald, Jeanne Riffel, Barbara May, Bruce Feldkamp. THIRD

ROW: Terry Schoenthaler, Richard Robertson, Ernie Honas, Dennis Wolf, Barbara Shirk, Cindy Wheeler. FOURTH ROW: Ann Nelson, Ellen Armbruster, Diane Keller, Barbara Pfeifer, Bonnie Kingsley, Juanita Roth.

ELLIS APPLIANCE

## *Student Council*

HAROLD'S MEN'S WEAR

Bill Honas, President; Billie Lee Allen, Secretary-Treasurer; David Kingsley, Vice President.



The Student Council is the governing body of Ellis High School. Composed of elected representatives from each class and organization, its primary purpose is to keep the student body informed of school activities and to act on all measures put before them.

The Student Council attended a Student Congress conference at Colby on September 29.

Homecoming and Beat Week were the two activities sponsored by the Student Council.

Beat Week, April 19-22, was the time when almost anything goes and usually does. The students dressed as they pleased during Beat Week.





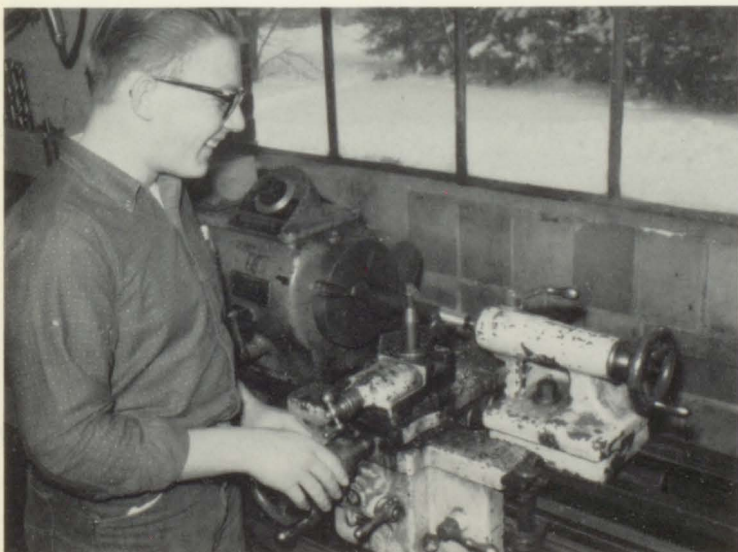
FRONT ROW: Verlin Engel, Sentinel; Mr. Schneider, Sponsor; Kenny Deutscher, Vice President; Ernie Honas, President; Orval Weigel, Secretary; Dean Denning, Reporter; Darrell Armbruster, Treasurer. SECOND ROW: John Armbruster, Harold Armbruster, David Hays, Tom Kinderknecht, Sig Lang, Virgil Schuster, Vergil

Augustine, Verlin Armbrister, Representative; Mark Boos. THIRD ROW: Jerry Keller, Alvin Armbrister, Skip Matteson, John Jacques, Ronald Armbruster, Ronald Zachman, Dick Ridgway, Richard Waldschmidt, Bob Jacques. FOURTH ROW: Edward Dinkel, George Crawford, Donald Bieker, Eddie Douglas.

## *Future Farmers Of America*

GOLDEN BELT CO-OP ASSN.  
Lumber Yard - Elevator - Service Station  
And Bulk Service

RONALD ZACHMAN



VERLIN ENGEL







## *Senior Kayettes*

FRONT ROW: Bonnie Kingsley, Billie Lee Allen, Susan Scott, Diane Keller, Mary Jane Augustine, Jackie Sue Stebbins, Vice President; Julia Shirck, President; Joy Kellogg, Secretary; Julie Nicholson, Treasurer; Linda Hall, Joyce Deutscher, Barbara Shirk. SECOND ROW: Teresa Vine, Barbara May, Marilyn Schoenberger, Nancy Bray, Pattie Pfeifer, Gladys Augustine, Darlene Dinkel, Barbara Douglas, Marlene Dinkel, Kay Weber, Kathleen Windholz, Barbara Flax. THIRD ROW: Cynthia Bittel, Elaine King, Beulah Fischer, Ann Kohl, Margaret Keller, Kathleen Hamburg, Carol Wiesner, Elgerine Weigel, Betty Jo Weaver, Mary

Sue Walters, Jeanne Storm, Carol King, Barbara Bittel. FOURTH ROW: Gloria Helget, Viola Kutina, Carol Mayes, Edna Loflin, Vicky Romey, Phyllis Gnadt, Pauletta Luea, Cynthia Young, Helen Geschwentner, Barbara Brown, Miss Epps, Sponsor. FIFTH ROW: Olivia Snider, Phyllis Johnson, Mary Dorzweiler, Judy Helget, Jeanne Riffel, Barbara Pfeifer, Lois Kinderknecht, Lola Luea, Lillian Fisher, Doris Luea. SIXTH ROW: Margaret Huber, Martha Spreen, Rose Ann Lang, Shirley Weber, Lorrene Brown, Betty Wasinger, Stella Honas, Donna Luea, Betty Kay Storm, Clara Fanshier.

CHARM SHOP

CULLIGAN SOFT WATER

## *Junior Kayettes*

FRONT ROW: Sharon Roberts, Joyce Longley, Charlene Jones, Sandra Sutton, Lou Ann Snider, Joyce Roberts, Elizabeth Mackender, Cindy Wheeler, Mary Jo Beals, Cheryl Bailey. SECOND ROW: Connie Huffman, Sharon Alloway, Betty Mayes, Kay Honas, Mary Ann Dinkel, Linda Boschowitzki, Aleta Schumm, Sandy Fuller, Sheryl Simminger, Carol Huber. THIRD ROW: Sherry Olmstead, Brenda Dirks, Vice President; Jeannie Kohlrus, Juanita Roth, Bernadine Fischer, Sally Steel, Barbara Huffman, Rosetta Schmidt,

Mary Ann Mayes, Ellen Armbruster. FOURTH ROW: Peggy Blackburn, Marilyn Haas, Karen Ptaschek, Lou Ann Fisher, Roselin Augustine, Lois Ann Schuster, Betty Lang, Joleen Deutscher, Anita Franta, Judy Erbert. FIFTH ROW: Nancy Baugher, Barbara Vine, Treasurer; Martha Beals, Secretary; Virginia Gabel, Peggy Douglas, Gay Pearson, Kay Reeves, Ann Nelson, President. SIXTH ROW: Carol Lorimor, Judy Dorzweiler, Diane Dreher, Carol Seibel, Claudia Deutscher, Linda Gurtler, Mrs. Gurtler, Sponsor.







FRONT ROW: Mike Haas, Bill Honas, Jim Aust, Gary Wentling, Phil Nicholson, Treasurer; Ricky Brown, Secretary; Wayne Blackburn, Vice President; Garnis Hagen, President. SECOND ROW: Danny Geschwentner, Bud Campbell, Dwayne Ashbaugh, Clarence Rupp, Verlin Engel, Barry Dubach, Ray Pinney, Alfred Bollig, Mr. Hipkins. THIRD ROW: Kenny Windholz, Allaire Homburg,

Dick Ridgway, Gary Miller, LeRoy Weaver, Orval Weigel, Gary Gerber, Norman Rupp, Mac Reed. FOURTH ROW: Edwin Dorzweiler, Donald Bieker, Harold Schmidt, Bob Schmidt, Darrell Armbruster, Verlin Armbrister, Ernie Honas, Dean Denning. FIFTH ROW: Richard Waldschmidt, David Schoech, Bruce Feldkamp, Gary Augustine, Jerry Keller, David Hays, Earl Alloway, Jack Balcombe.

## *Senior Kays*

GOLDEN BELT SAVINGS  
AND LOAN

WILLIAM HONAS REAL ESTATE  
FARMERS' MUTUAL INSURANCE

## *Junior Kays*

FRONT ROW: Mr. Knoll, Sponsor; Skip Matteson, Bill Seibel, Larry Mallory, Terry Schoenthaler, Mr. Stanbury, Sponsor. SECOND ROW: Ronnie Miller, Richard Robertson, Billy King, Myron

Kroeger, Dwayne Keller, Art Niernberger. THIRD ROW: Jimmy Shirck, Dick Roberts, Steve Roper, Jim Scott, Jerry Armbruster.







MAJORETTES: Gay Pearson, Barbara May, Nancy Bray, Ann Nelson, Judy Dorzweiler, and Carol Lorimer, Drum Major.

## Orange And Black Band

The Orange and Black Band began its year of activities with an appearance at the Kansas State Fair at Hutchinson, under the direction of DeRoy Rogge. The marching band (50) performed at all home football games, and also played at many out-of-town games. The two most out-standing performances were Homecoming, when the Ellis and Stockton bands marched together, and Armistice Day when the Wakeeney and Ellis bands presented a combined salute to the armed forces.

Spring appearances included a Valentine's Day concert, February 14, music contest, and league band clinic.





# CLARINETS

Barbara Shirk  
Bonnie Kingsley  
Sandy Fuller  
Ellen Armbruster  
Warren Allen  
Larry Mallory  
Gay Pearson  
Aleta Schumm  
Cheryl Bailey  
Virgina Gabel  
Betty Mayes  
Peggy Douglas  
William Armbrister

# FLUTES

Nancy Bray  
Julie Nicholson  
Barbara May  
Linda Gurtler  
Elizabeth Mackender  
Cynthia Wheeler

# OBOE

Ann Nelson

# FRENCH HORNS

Susan Scott  
Julia Shirk  
Cheryl Simminger  
Carol Mayes

# CORNETS

Richard Roberts  
Bruce Feldkamp  
Billy Seibel  
Wilma Chapman  
Olivia Snider  
Glen Kroeger  
Douglas Hurt  
David Bennett  
Mary Jo Beals  
Jerry Armbruster

# TUBAS

Allaire Homburg  
Leon May

# SAXOPHONES

Carol Lorimor  
Carol Huber  
Joyce Roberts  
Martha Beals  
Nancy Baugher  
Claudia Deutscher  
Kay Reeves

# BARITONES

Gary Miller  
Richard Roberts  
Donald Bennett  
Jim Shirck

# TROMBONES

Pattie Pfeifer  
Diane Keller  
Dick Weatherholt  
Barbara Vine  
Jim Scott

# BASSOON

Joy Kellogg

# DRUMS

Billie Lee Allen  
Phyllis Johnson  
Juanita Roth  
Judy Dorzweiler

# DIRECTOR

Mr. DeRoy Rogge

THE NICHOLSON ZERFAS - INSURANCE AGENCY  
Can Take Care of All Your Insurance Needs.  
Ellis State Bank Building







FRONT ROW: Bud Campbell, Susan Scott, Bruce Feldkamp, Julie Nicholson, Garnis Hagen, Barbara May. SECOND ROW: Julia

Shirck, Billie Lee Allen, Mac Reed, Bonnie Kingsley, Allaire Homburg, Barbara Pfeifer, Jimmy Shirck, Mr. Rogge.

## *Triple Quartet*

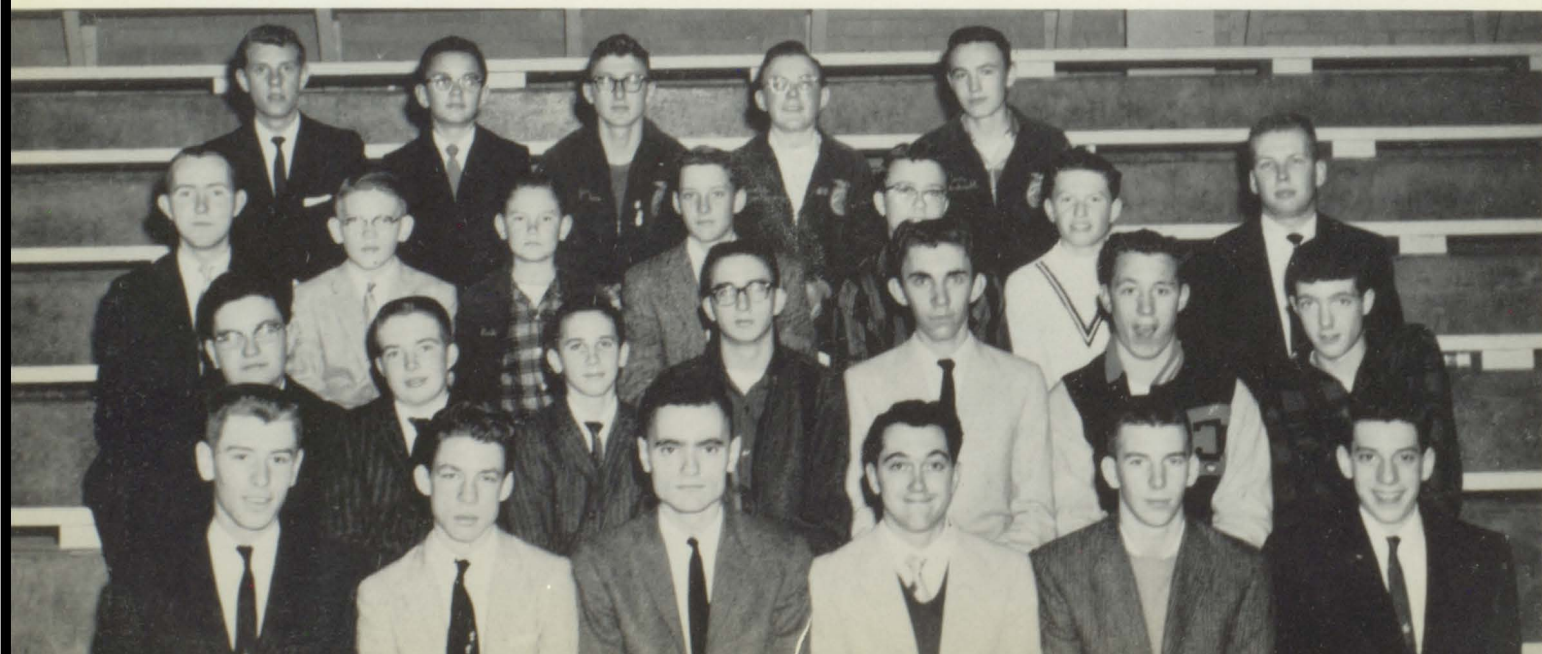
BARTELL MOTOR CO., INC.  
Sales - Service  
Phone PA 6-4232

SNIDER ELECTRIC  
Industrial - Commercial - Residential  
Wiring & Repairing

## *Boys' Chorus*

FRONT ROW: Jerry Augustine, Larry Mallory, Bud Campbell, Danny Geschwentner, Gary Wentling, Bruce Feldkamp. SECOND ROW: Allaire Homburg, Dick Ridgway, Bill Seibel, Barry Dubach, Darrell Armbruster, Harry Weber, Phil Nicholson. THIRD ROW:

Mac Reed, Jimmy Shirck, Donald Belker, Edward Dinkel, Robert Jacques, Larry Augustine, Mr. Rogge. FOURTH ROW: Garnis Hagen, Dick Roberts, Jerry Keller, Ronnie Zachman, Tom Kinderknecht.







FRONT ROW: Gary Gerber, Billy Seibel, Larry Mallory, Bud Campbell, Danny Geschwentner, Gary Wentling, Bruce Feldkamp, Allaire Homburg, Garnis Hagen. SECOND ROW: Susan Scott, Billie Lee Allen, Diane Keller, Pattie Pfeifer, Bonnie Kingsley, Barbara Pfeifer, Phyllis Johnson, Kathy Hamburg, Mac Reed.

THIRD ROW: Julia Shirck, Ellen Armbruster, Ann Nelson, Carol Lorimor, Joy Kellogg, Kay Reeves, Martha Beals, Linda Gurtler, Julie Nicholson. FOURTH ROW: Orval Weigel, Darrell Armbruster, Jimmy Shirck, Dick Roberts, Jackie Sue Stebbins, Claudia Deutscher, Nancy Bray, Barbara May, Mr. Rogge.

## *Orange and Black Chorus*

FULLER BROS. DRUG

KELLER FURNITURE CO.  
Home of Early American Furniture

## *Girls' Chorus*

FRONT ROW: Carol King, Marlene Dinkel, Kay Weber, Darlene Dinkel, Barbara Douglas, Billie Lee Allen, Julia Shirck, Barbara May, Mr. Rogge. SECOND ROW: Norma Bongartz, Joy Kellogg, Cynthia Bittel, Shirley Weber, Elgerine Weigel, Norma Weber, Juanita Roth, Jeannie Kohlrus, Edna Loflin, Gladys Augustine, Mary Jane Augustine. THIRD ROW: Joanne Bongartz, Rosetta Schmidt, Phyllis Weber, Georgia Crawford, Mary Ann Mayes, Lynda Bongartz, Carol Wiesner, Kathy Hamburg, Claudia Deutscher, Joyce

Fisher, Barbara Vine, Lois Kinderknecht, Linda Hall, Teresa Vine, Martha Spreen, Viola Kutina. FIFTH ROW: Mary Dorzweiler, Diane Dreher, Carol Seibel, Ann Nelson, Martha Beals, Judy Erbert, Carol Lorimor, Kay Reeves, Linda Gurtler, Ellen Armbruster, Joleen Deutscher. SIXTH ROW: Barbara Bittel, Barbara Shirk, Virginia Gabel, Lois Schuster, Betty Jean Lang, Lillian Fisher, Stella Honas, Rose Ann Lang, Elaine King, Gloria Helget.







Queen Marilyn Schoenberger and her attendants Lola Luea and

#### ELLIS STATE BANK

The place to start your savings account and the people to see if you have a financial problem.

Your Deposits Are Insured

By The Federal Insurance Corporation

## Homecoming

In an impressive pre-game ceremony held on the football field, Marilyn Schoenberger was crowned 1959 Homecoming Queen by the Homecoming King, Harry Weber. Queen Marilyn and her attendants Lola Luea, and Mary Jane Augustine were honored with the traditional number "Let Me Call You Sweetheart" played by the combined talents of the Stockton and Ellis bands. The King's attendants were Ernie Honas and Bill Honas; the flower-bearers were







Mary Jane Augustine.

*of 1959*

Joan Balcombe, daughter of Mr. and Mrs. Jack Balcombe, and Ronnie Wentling, son of Mr. and Mrs. Oscar Wentling.

During the halftime performance, the queen and her attendants were further honored in a special program by the Stockton - Ellis bands. The royalty reigned at the annual dance sponsored by the junior class, which climaxed the gala celebration.

NICHOLSON BROS.  
Established 1878 - 3rd Generation  
Lumber - Building Material - Coal





# "Gay

A flower-covered trellis marked the entrance to a side-walk cafe where gaily decorated quartet tables portrayed the theme "Gay Paree". Servers escorted the guests to their places, while dinner music was being played on an organ. In the center of the floor was a grass-covered path leading to a fountain, where water sprayed upward and fell back on green lily pads. The stage setting for the program was also a cafe scene done in silhouette. Lending to a dreamy atmosphere were the seniors' class colors, lavender and white, carried throughout the decorations. The Parisian men

SHUBERT'S PASTERIES  
Breads - Pastries - Cakes for All Occasions

## Servers

Diane Keller, Julie Nicholson, Janet Bradshaw,  
Pattie Pfeifer, Sally Fuller, Susan Scott.

Dwayne Ashbaugh, Ricky Brown, Jim Aust, Bud  
Campbell, Gary Gerber, Gary Augustine.





# *Parée*

included tomato juice, Jello salad, Swiss steak with mashed potatoes and gravy, green beans, coffee and cherry pie. The program featured the servers in black tuxedos and lavender dresses. They sang and danced to four Parisian favorites: "April in Paris," "C'est Si Bon," "I Love Paris," and "The Last Time I Saw Paris."

After the banquet, the strains of Dave Emery and the Starlighters gave the evening a pleasant glow. As the evening drew to a close, another successful prom went down in the history of E.H.S.



MARIE'S CAFE  
Homemade Foods

WEBB'S DERBY SERVICE  
Douglas Webb, Prop.







FRONT ROW: Pattie Pfeifer, President; Diane Keller, Bonnie Kingsley, Mary Jane Augustine, Barbara Pfeifer. SECOND ROW: Wayne Blackburn, Darlene Dinkel, Barbara Douglas, Gladys Augustine, Billie Lee Allen, Susan Scott, Nancy Bray, Treasurer; Joyce Deutscher, Secretary; Mary Dorzweiler, Vice President; Kathleen Windholz, Kay Weber, Marlene Dinkel, Phyllis Johnson. THIRD ROW: Jim Aust, Gary Wentling, Connie Huffman, Sharon Alloway, Cindy Wheeler, Betty Jean Lang, Lois Schuster, Linda Hall, Kay Honas, Carol King, Barbara Bittel, Elizabeth Mackender, Charlene Jones, Mary Jo Beals. FOURTH ROW: Bill Honas, Gary Miller, Eddie Dorzweiler, Alfred Bollig, Diane Dreher, Carol Seibel, Claudia Deutscher, Marilyn Haas, Rosie Augustine, Jeannie Kohlrus, Juanita Roth, Sally Steel, Barbara Huffman, Nancy Baugher, Rosetta Schmidt, Phyllis Weber, Cheryl Bailey. FIFTH ROW: Barbara Shirk, Margaret Keller, Ann Kohl, Kathy Hamburg, Judy Helget, Ronald Zachman, Ronnie Armbruster, David Hays, Alvin Armbruster,, Norma Weber, Virginia Dinkel, Norma Bongartz,

Joanne Bongartz, Georgia Crawford, Lynda Bongartz. SIXTH ROW: Barbara May, Jeanne Riffel, Verlin Armbrister, Darrell Armbruster, Jerry Augustine, Ray Pinney, Bernadine Fischer, Leroy Weaver, Orval Weigel, Billy King, John Corder, Art Niernberger, Jimmy Scott, Myron Kroeger, Ernie Honas. SEVENTH ROW: Linda Gurtler, Ann Nelson, Judy Dorzweiler, Barbara Vine, Ellen Armbruster, Carol Lorimor, Joleen Deutscher, Anita Franta, Martha Beals, Peggy Douglas, Gay Pearson, Sandy Fuller, Elgerine Weigel, Betty Jo Weaver, Mary Sue Walters, Linda Boschowitzki, Sheryl Simminger. EIGHTH ROW: Elaine King, Beulah Fischer, Donna Luea, Stella Honas, Betty Storm, Lillian Fisher, Cynthia Bittel, Rose Lang, Shirley Weber, Joy Kellogg, Martha Spreen, Jeanne Storm Julia Shirck, Julie Nicholson, Jackie Stebbins. NINTH ROW: Margaret Huber, Olivia Snider, Teresa Vine, Lois Kinderknecht, Carol Mayes, Viola Kutina, Dean Denning, Garnis Hagen, Edna Loflin, Mrs. Rupp, Sponsor.

JOHNSON FIRESTONE  
Home and Auto  
Your Safety is Our Business

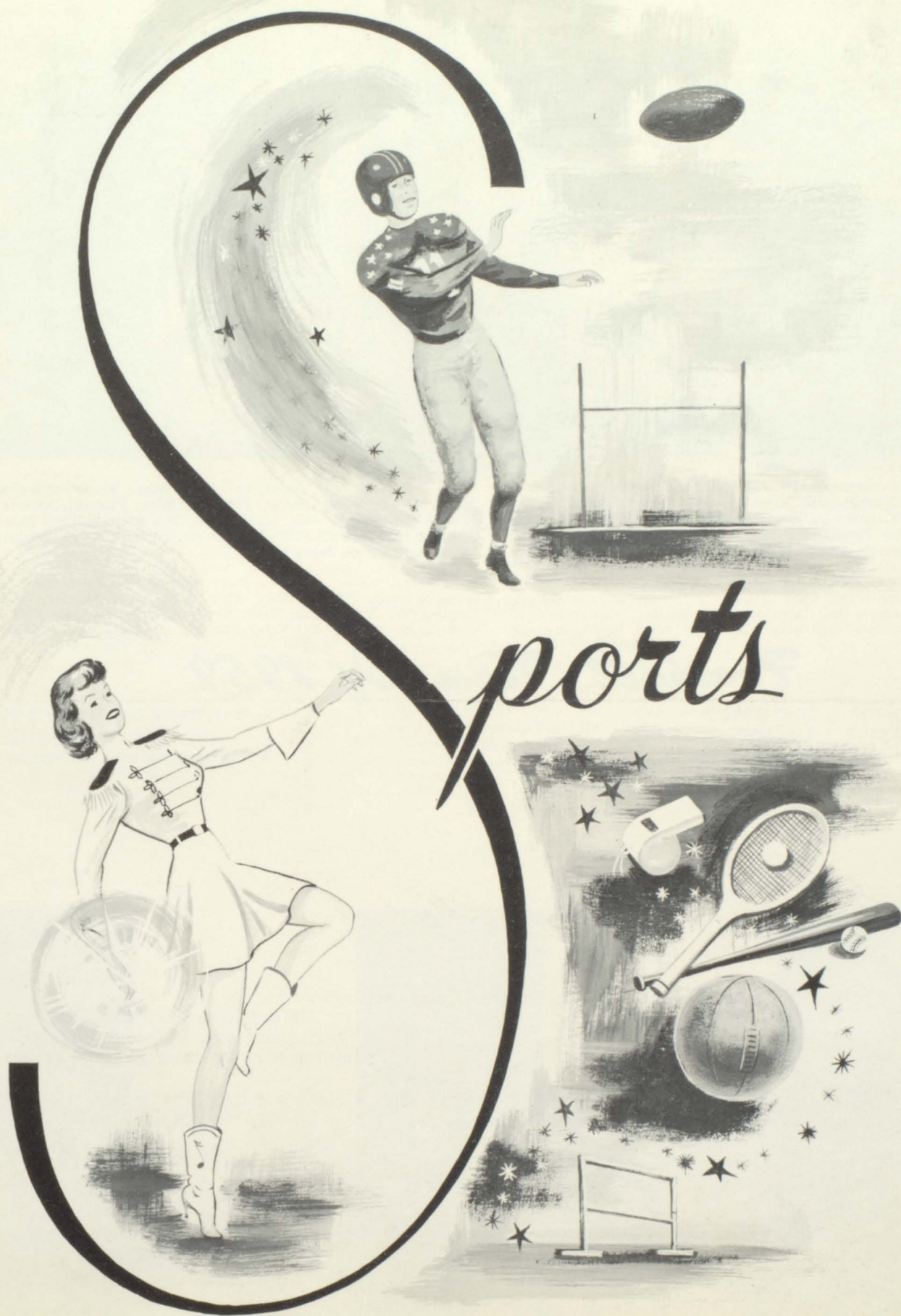
*Pep Club*

JADE CLEANERS AND DRAPERIES  
- Dic-Tone Process -  
Ray Haneke, Owner

Barbara Pfeifer, Mary Jane Augustine, Bonnie Kingsley, Head Cheerleader; Diane Keller, Patty Pfeifer.











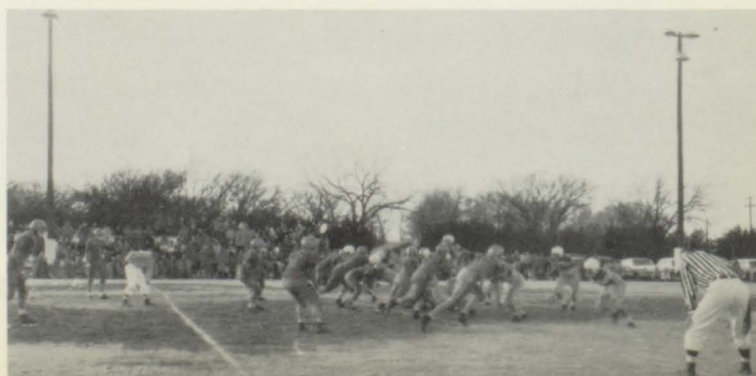
FRONT ROW: Norman Rupp, Bob Kohlrus, Emmett Fuller, David Hays, Ralph Burns, David Kingsley, Gary Gerber; David Erbert. SECOND ROW: Larry Mallory, Bob Schmidt, Kenny Hladek, Francis Augustine, Ray Pinney, Bill Honas, Gary Wentling, Harry Weber, Dwayne Ashbaugh. THIRD ROW: Bruce Feldkamp, Phil Nicholson,

David Schoech, Jack Balcombe, Anton Rupp, Gary Augustine, Ricky Brown, Ernie Honas. FOURTH ROW: Richard Roberts, John Helget, Dennis Wolf, Dick Battin, Dick Ridgway, Mike Haas, Clarence Rupp. FIFTH ROW: Richard Waldschmidt, Eddie Douglas, James Armentrout, Jerry Keller.

## *Football Team Of 1959*

ELLIS PLUMBING & HEATING  
1012 Washington Street  
Ellis, Kansas

S & N OIL COMPANY  
A. J. Niernberger & Joe F. Schuster  
Fine Dealers in Petroleum Products





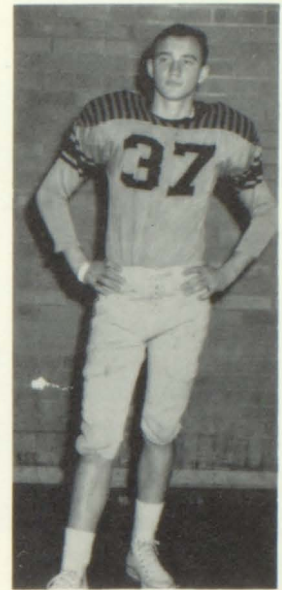
# Senior Lettermen



HARRY WEBER



GARY WENTLING

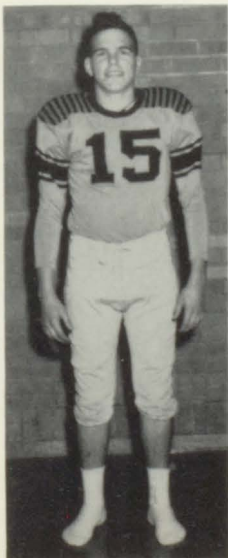


BILL HONAS

## SEASON RECORD

Ellis		Opponent	
	21	LaCrosse	6
	19	Palco	6
	26	Stockton	7
DISNEY SERVICE STATION	6	Phillipsburg	19
Mobilgas - Oil and Tires	0	Plainville	29
Mobil Batteries and Accessories	6	Victoria	28
	0	Hill City	21
	0	Wakeeney	32

SHIRK WELL SERVICE  
Phone PA 6-4220  
Capable Crews



RAY PINNEY



ERNIE HONAS



WAYNE BLACKBURN



FRONT ROW: Ricky Brown, Bill Honas, Jim Aust, Ernie Honas, Bud Campbell. SECOND ROW: Dwayne Ashbaugh, Gary Wentling, Wayne Blackburn, Verlin Armbrister, Coach Hitch.

## *A-Squad*

CITY DAIRY  
Bill Blackburn

CHAMBER'S STANDARD SERVICE  
Gas, Oil, and Grease

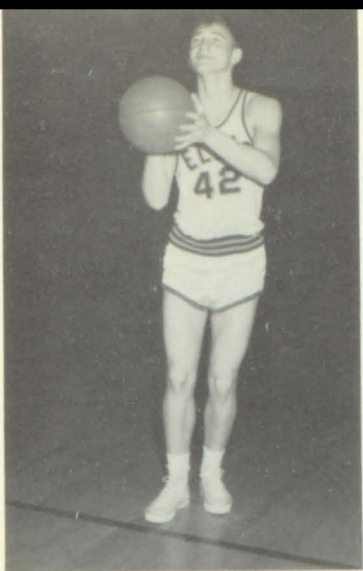
## *B-Squad*

FRONT ROW: Coach Stansbury, David Schoech, Emmett Fuller, Robert Schmidt, Mike Haas, Edwin Dorzweiler. SECOND ROW: Richard Waldschmidt, James Armentrout, Bruce Feldkamp, Jack

Balcombe, Phil Nicholson. THIRD ROW: Ronald Armbruster, Alvin Armbrister, Jerry Keller.







BILL HONAS



ERNIE HONAS

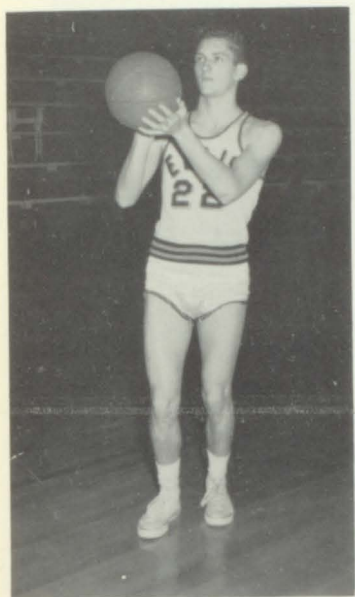


GARY WENTLING

## *Senior Lettermen*

### RAILROADERS POST SUCCESSFUL SEASON

The Ellis cagers coached by Lew Hitch, came through with a most successful season by capturing first place in the M.C.L. tournament and also in the District tournament. In season play, Ellis shared a three way tie for first with Wakeeney and Plainville. The over all record excluding tournament activity was 12 wins and 4 loses.



WAYNE BLACKBURN



VERLIN ARMBRISTER

ALLOWAY'S BODY SHOP

ALLOWAY'S DAIRY KREME







FRONT ROW: Mr. Knoll, Coach; Terry Schoenthaler, Jerry Armbruster, Steven Deutscher, Dick Weatherholt, Richard Robertson. SECOND ROW: Donald Bennett, Donald Maier, Douglas Hurt, Douglas Young, Leon May. THIRD ROW: Jay C. Hays, Richard Fries, Verlin Schuster, William Armbrister, Paul Armbruster.

## *Seventh Grade*

## *Eighth Grade*

DESMARTEAU BROS.

FRONT ROW: Mr. Knoll, Coach; David Bennett, Billy King, Glen Kroeger, Glen Cox. SECOND ROW: Myron Kroeger, David Deutscher, Gregory Armbruster, Jim Scott. THIRD ROW: Warren Allen, Duane Keller, Roger Landauer, Gilbert Augustine, Art Niernberger.



## *Freshmen*



GABEL BARBER SHOP

FRONT ROW: Billy Seibel, Stephen Roper, John Helget, Dick Battin, Skipper Matteson, Ronnie Miller. SECOND ROW: David Wiesner, Dennis Wolf, Larry Mallory, Richard Roberts, Frank Stadelman, Larry Augustine.





FRONT ROW: Coach Stansbury, Richard Weber, David Erbert, Emmett Fuller, Robert Schmidt, Coach Hitch. SECOND ROW: Francis Augustine, Kenney Hladek, Richard Waldschmidt, David

Hays, Phil Nicholson, Gary Miller. THIRD ROW: Dean Denning, Gary Wentling, Dwayne Ashbaugh, Norman Rupp, Ernie Honas.

VICTOR HUBBS  
Farm Loans - Oil Lease - Insurance  
Real Estate

*Track*

THE COTTAGE HOTEL AND COFFEE SHOP  
Jake and Anieda Simminger  
Ellis, Kansas

FRONT ROW: Coach Stansbury, Larry Mallory, Skipper Matteson, Jerry Keller, Bruce Feldkamp, Don Cox, Coach Hitch. SECOND

ROW: John Helget, Dennis Wolf, David Wiesner, Dick Battin, Allaire Homburg, Richard Roberts.





# Snapshots



GAMBLES'



SEVEN UP BOTTLING COMPANY  
Hays, Kansas





Teddy Joe  
 Mary Dan Lucille Wayne  
 Douglas Sharon Kenneth  
 Maxine Rush Sadie Perry  
 Bruce  
 Pat  
 David  
 Christine  
 Donna Jack Bev  
 Robert Kay Paul Thelma  
 John Mary George Sue Fred  
 Carol Cleon Ann Tom Vicki Darwin Fern  
 Betty  
 Bill

# utographs

