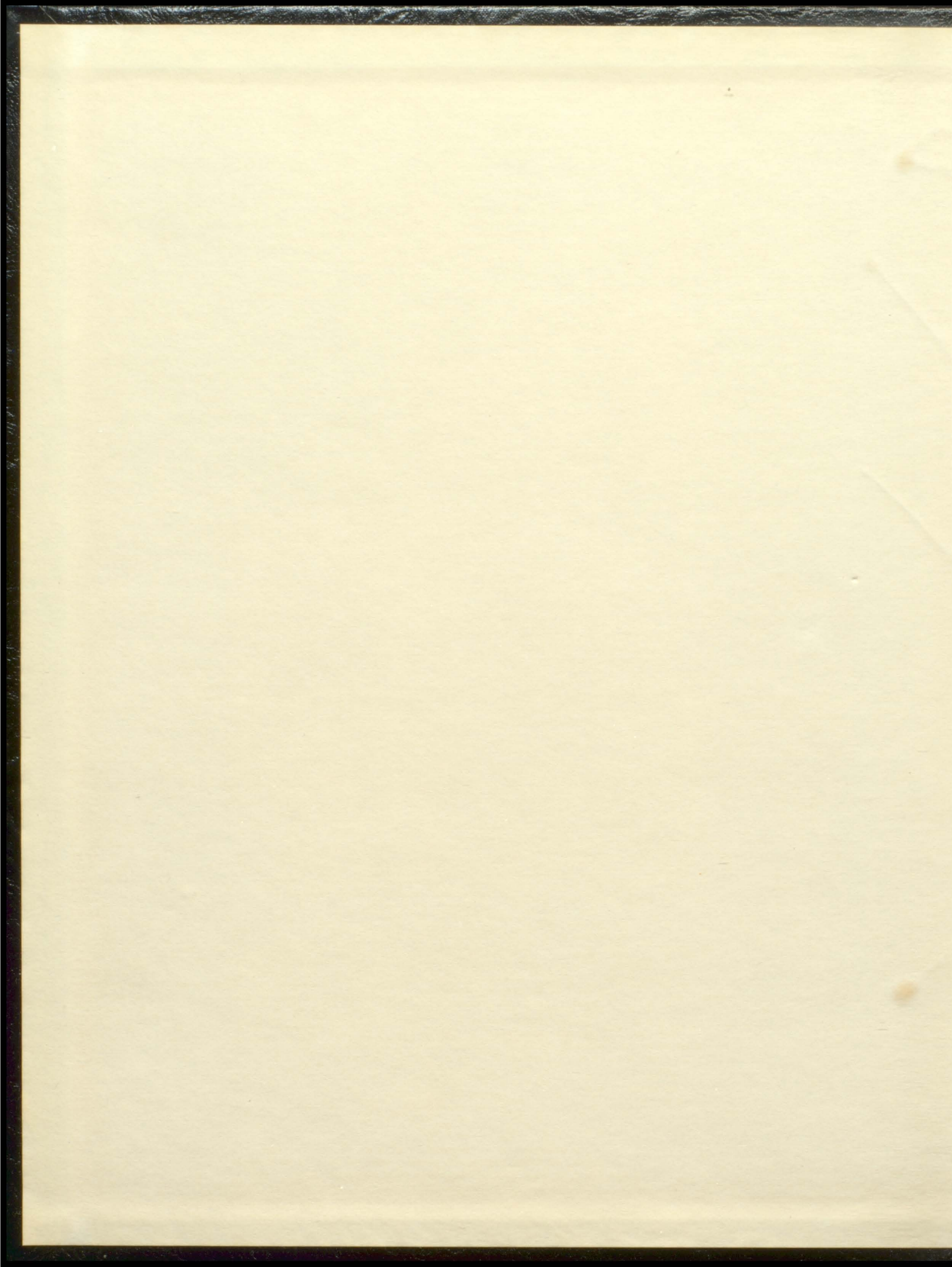
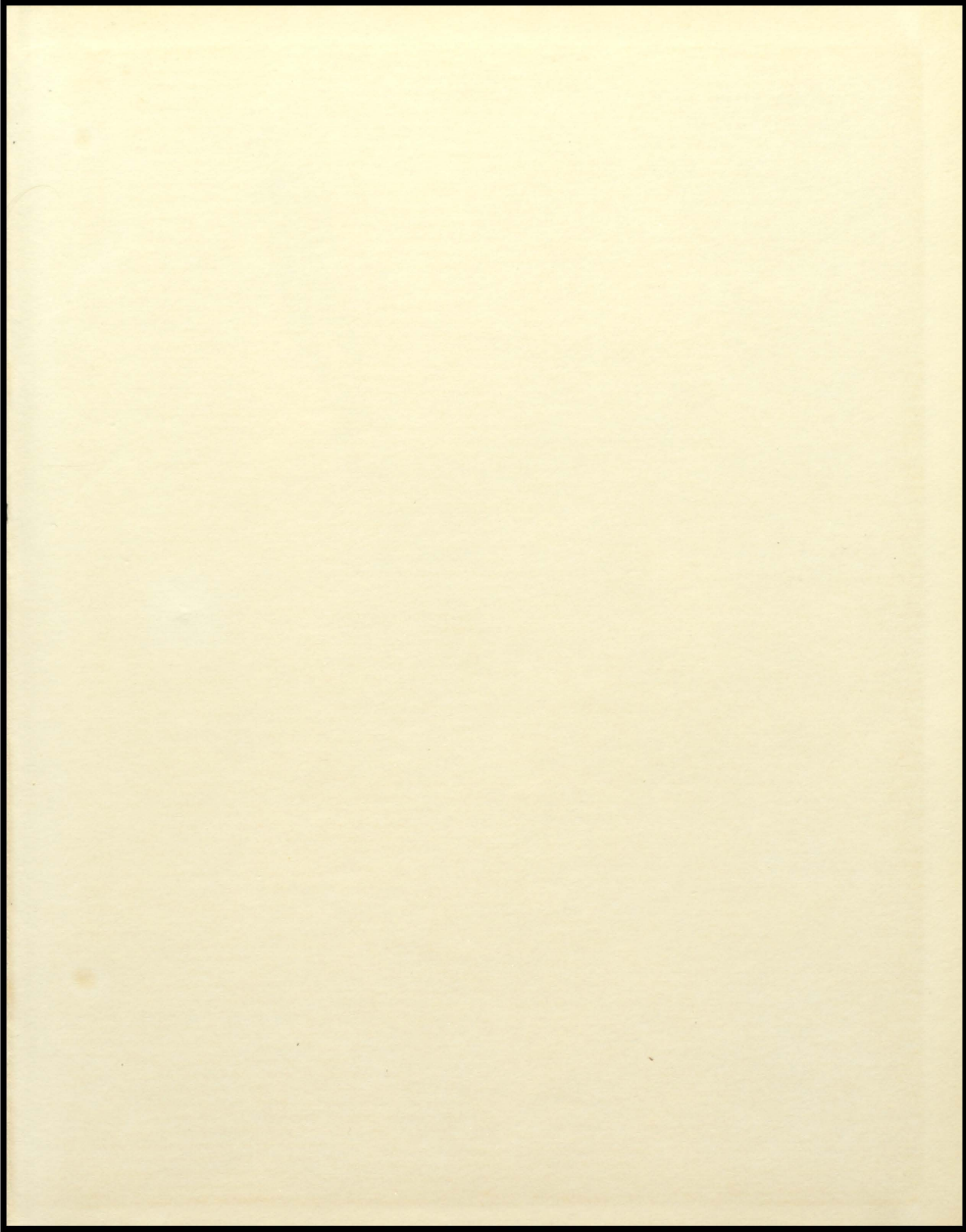


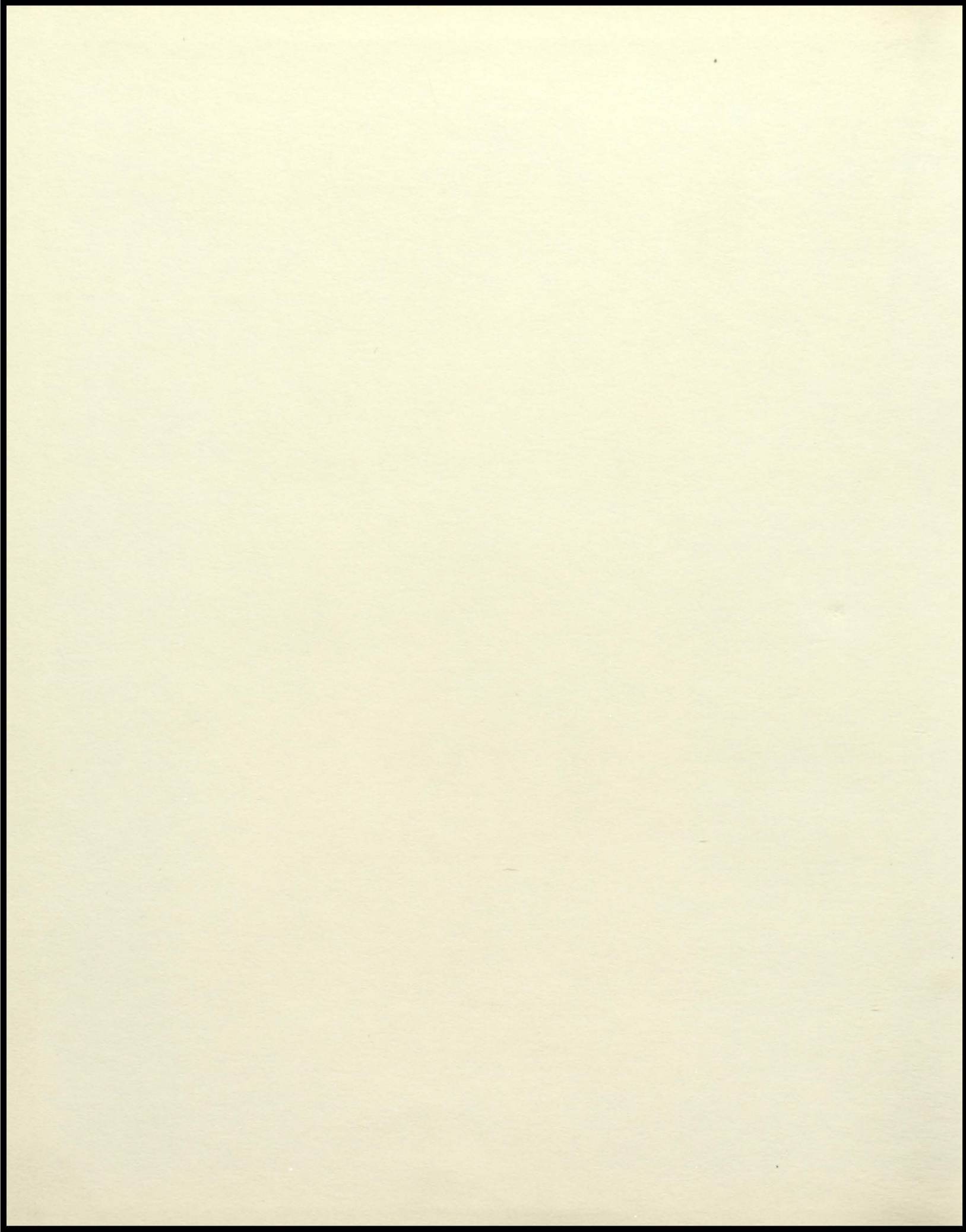
THE RAILROADER













*1959 Railroader  
Ellis High School  
Ellis, Kansas*



Memories, as numerous as the flakes of snow, shall not be trodden under the footsteps of time marching on but shall live in our minds as vividly as yesterday. In the hardships of life ahead, these carefree years at Ellis High School shall be remembered as the best years of our lives. For the student whose life was molded through these years, there will remain an indestructable fondness for these memories. It will always mean to him a time when he was accepted as an individual and given a chance to expand his talents and to form for himself a state of success.



FACULTY ADVISOR  
Mrs. Marilyn Wallace

## *The Railroader*

Sponsored by the Journalism Class  
of  
Ellis High School  
Ellis, Kansas

### *Staff*

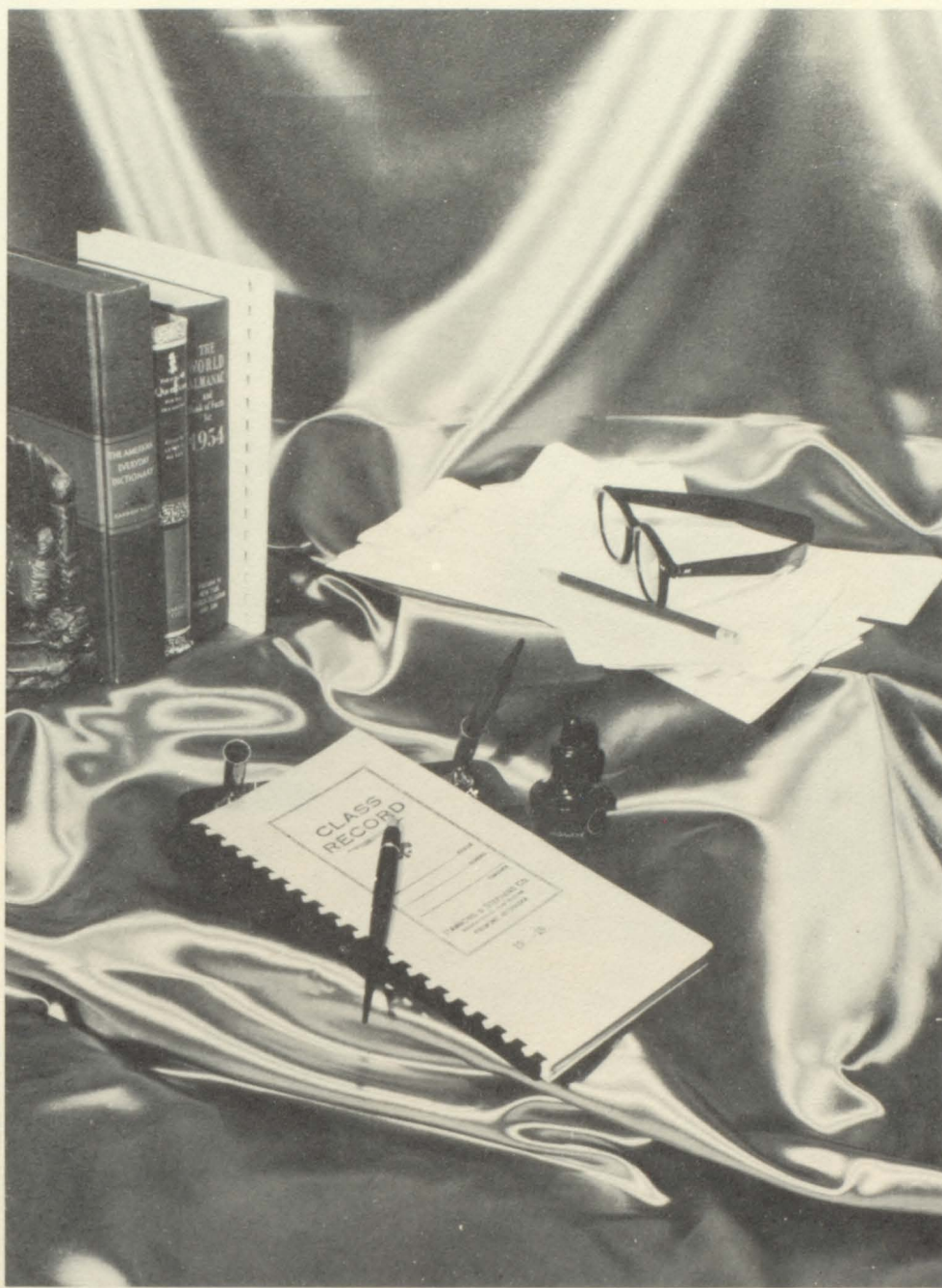
EDITOR-IN-CHIEF  
Janice Pinney  
ASSISTANT EDITOR  
Zelda Colborg  
BUSINESS MANAGER  
Dixie Fuller  
ADVERTISING MANAGER  
Sharon Henderson  
ASSISTANTS  
Carole Baugher  
Donald Augustine  
COPY EDITOR  
Pat Niermberger  
CIRCULATION MANAGERS  
Dean Denning  
Dennis Kinderknecht  
SPORTS EDITORS  
Gilbert Brungardt  
Kenny Haas  
SOCIETY EDITORS  
Norman Dreher  
Carrie Weigel  
MUSIC EDITOR  
Steve Wolf  
PHOTOGRAPHY EDITOR  
Gary Kroeger  
ACTIVITIES EDITORS  
Diana Luea  
Mary Louise Romey  
Sondra Smith  
Carol Weber  
TYPISTS  
Rose Mary Rupp  
Beverly Schumm

### *Table of Contents*

FACULTY . . . . .	3
GRADUATES . . . . .	7
UNDERGRADS . . . . .	23
ACTIVITIES . . . . .	33
SPORTS . . . . .	51







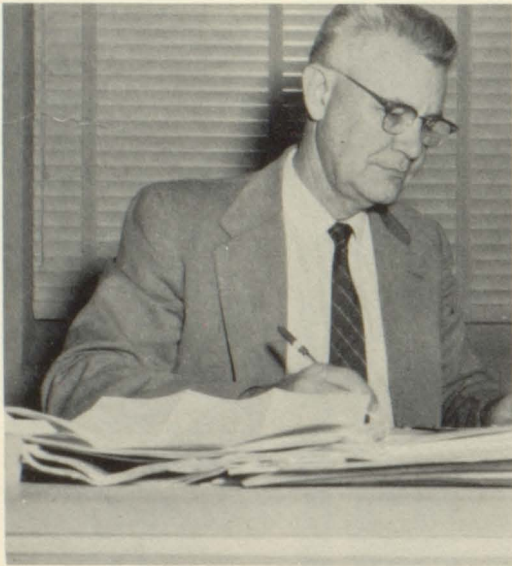
Faculty 59





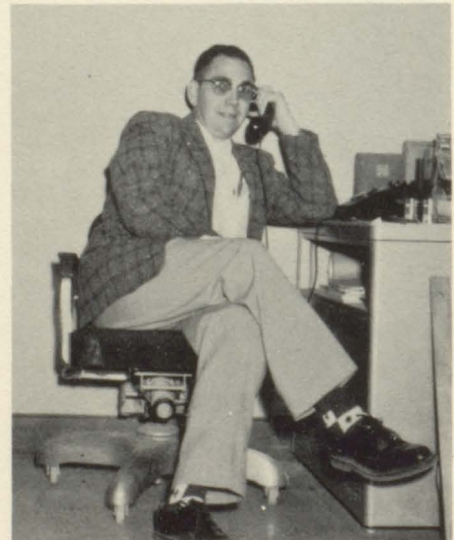
### *School Board*

LEFT TO RIGHT: Alice Balcombe, Clerk; Ernest Armbruster, Treasurer; Dr. G. A. Surface, Director; Paul Augustine and Philip Nicholson, Board Members.



EDGAR FITZGERALD  
Superintendent

### DERBY SERVICE STATION



GEORGE BRAY  
Principal

### GOLDEN BELT CO-OP ASSN. INC.



We are Celebrating our Sixtieth Anniversary this year. During our sixty years of banking service in this community, we have helped many young farmers and business men get started in their careers. All of us from the Ellis State Bank are anxious to know the young people of the Ellis Community and we are interested in your activities and in your problems.



ALICE BALCOMBE: 7th & 8th Mathematics, Latin I & II.

ARLIN MILLS: Mathematics, Science.

We hope that when you are in need of financial advice, you will come to us, whether you want a safe place to place your earnings where they will earn a good guaranteed rate of interest to open a checking account, or to get financial information.

Remember you are always welcome at the friendly Ellis State Bank, Insured by the Federal Deposit Insurance Corporation.



JAMES MARTIN: Woodworking, Driver Training.  
ROBERT SCHNEIDER: Vocational Agriculture.



DEROY ROGGE: Band, Chorus, 7th & 8th Music.

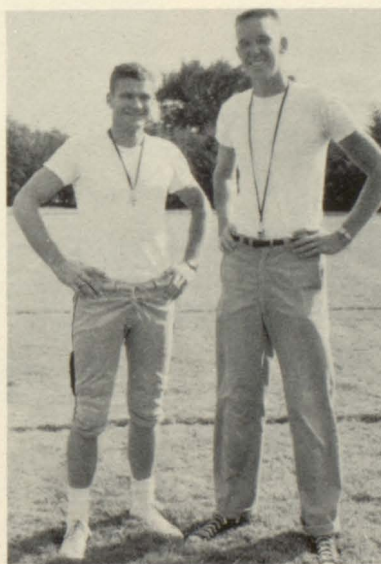


LOIS CUMMINGS: Typing I & II, Shorthand, Book-keeping.

JANE DUNHAM: Home Economics, Family Living.



HELEN GURTLE: English, Punctuation, Spelling.  
ROBERT PHILLIPS: Speech, English, Literature.  
LORA LONG: English, Reading, Grammar.



CLIFFORD STANSBURY: Football, Physical Education.

LEW HITCH: Basketball, Physical Education, Biology.



MARILYN WALLACE: Constitution, American History, Journalism.

LEROY HIPKINS: Social Science, Student Adviser.

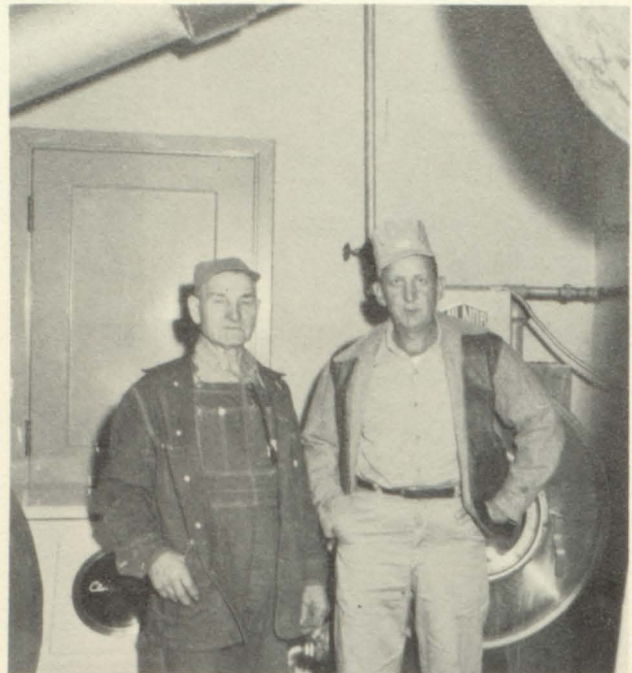


## Other Employees



COOKS

Mary Kelsch, Wilma Schumacher, Lucille O'Rourke



CUSTODIAN

Bob Homler, Blair Furbeck



BUS DRIVERS

F. Augustine, R. Shubert, R. Eaton, L. Shubert



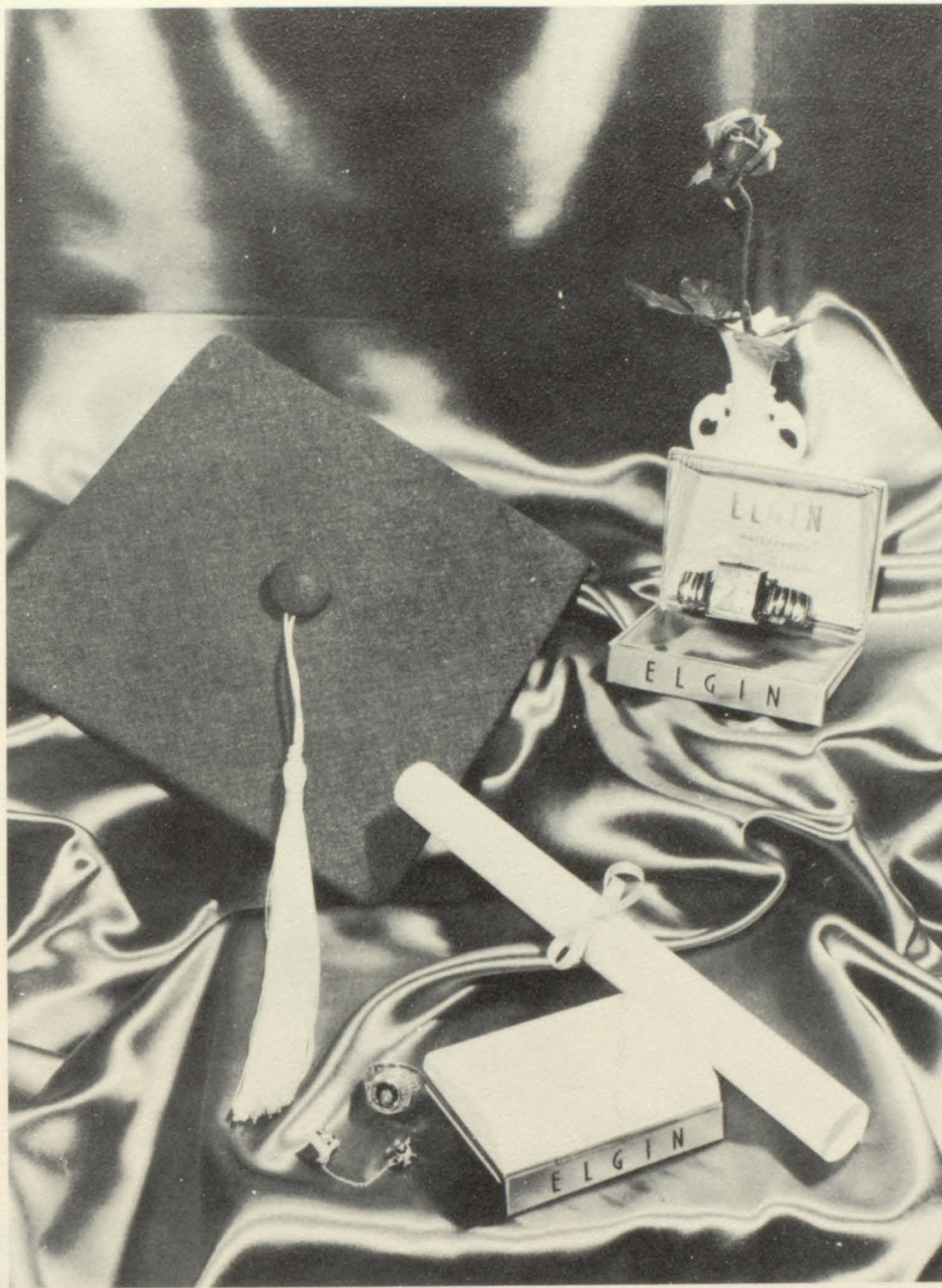
SECRETARY

Mrs. Marge Wiesner

NICHOLSON BROTHERS  
Lumber - Building Material - Coal

VICTOR HUBBS  
Farm Loans - Oil Leases - Insurance  
Real Estate





*Graduates*

59





ALTHEA NELSON

Class Secretary & Treasurer 1, 2; Class President 3, 4; Student Council 1--Y-Teens Representative; Junior Play; Senior Play; Speech Contest 1, 2, 3; Junior Y-Teen President 1; Y-Teens 2\*, 3\*; Kayettes 4\*; Pep Club 1, 2, 3, 4; Secretary & Treasurer 3; Cheerleader 2, 3, 4; Band 1, 2, 3, 4; Majorette 1, 2, 3, 4\*; Pep Band 1, 4; Dance Band 2, 3, 4; Girls' Chorus 1, 2, 3, 4; Mixed Chorus 1; Orange and Black Chorale 2, 3, 4; Music Contest 1, 2, 3, 4; Homecoming Queen 4; Snowball Attendant 3; Twirp Week Attendant 1; Snowball Server; Prom Server; Girls' State; Leadership Award 3; D. A. R. Scholarship 4; Gymnastics Award 3; Champion Girls' Volleyball Team 3; League Scholarship Tests, Honorable mention; plane geometry 2, English 3.



JOAN ERBERT

Class Secretary 3, 4; Y-Teens 1, 2, 3; Kayettes Treasurer 4; Pep Club 2, 4; Band 1, 2, 3; Pep Band 1, 2, 3; Girls' Chorus 1, 2, 3; Mixed Chorus 1; Orange and Black Chorale 2, 3, 4; Music Contest 3; Homecoming Attendant 4; Office Assistant 4; Typing Award 3; Reading Award 2, 3; Vocabulary Test Award 3; Gymnastics Award 2, 3; Champion Girls' Volleyball 3; Intramural Basketball 3.

JEAN ZIMMERMAN

Class Vice-President 4; Class Student Council Representative 2; Junior Play; Senior Play; Y-Teens 1, 2, 3; Kayettes 4\*; Pep Club 1, 2, 3, 4, Vice-President 3; Cheerleader 4; Girls' Chorus 1, 2, 3, 4; Orange and Black Chorale 4; Music Contest 4; Snowball Server; Prom Server; Gymnastics Award 3; Intramural Basketball 2; Volleyball 4; Champion Girls' Volleyball 3.

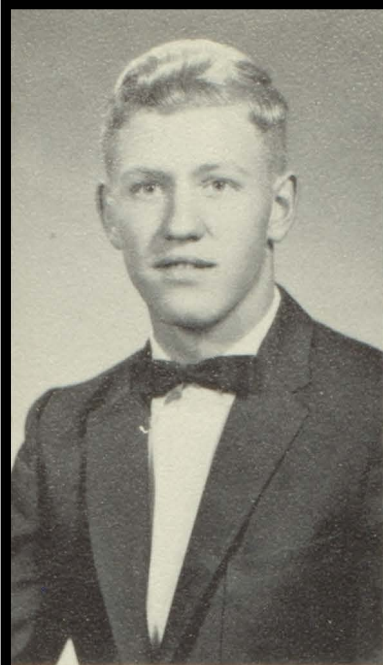


JANICE PINNEY

Class Treasurer 3, 4; Junior Play; Senior Play; Speech Contest 1; Y-Teens 1\*, 2, 3\*; Kayettes 4\*; Pep Club 1, 3, 4; Yearbook Editor 4; Newspaper Staff 4; Band 1, 2, 3, 4; Pep Band 1, 2, 3, 4; Dance Band 2, 3, 4; Girls' Chorus 1, 2, 3, 4; Mixed Chorus 1; Orange and Black Chorale 4; Music Contest 4; Snowball Server; Office Assistant 4; Library Assistant 4; KU Leadership Day 4; Reading Award 2, 3; Vocabulary Test Award 3; League Scholarship Tests, Honorable mention; English 2, 3.

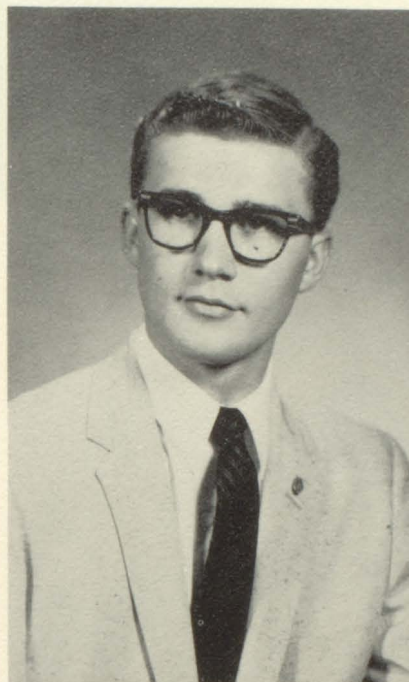






LEROY GNAD

Class Student Council Representative 4; Junior Play; Senior Play; Speech Contest 4; Kays President 4; E-club 3; Boys' Chorus 3, 4; Orange and Black Chorale 4; Football 2, 3\*, 4\*,; Basketball Manager 3, 4; Track 1, 2, 4; Play Oscar 3.

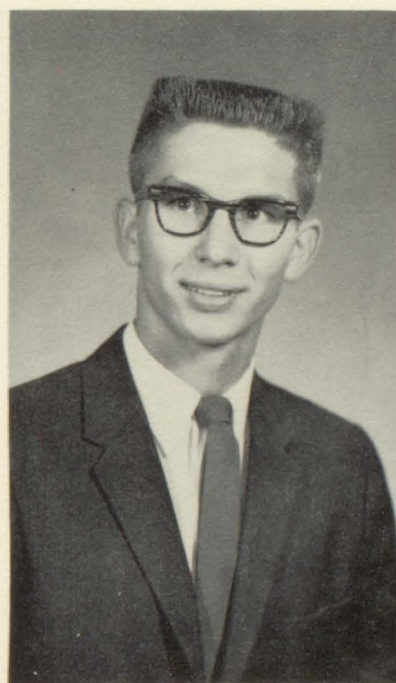


GARY KROEGER

Class Student Council Representative 4; Junior Play; Senior Play; Kays 4\*; E-Club 2; Yearbook Staff 4; Newspaper Staff 4; Boys' Chorus 3; Football Manager 2; Basketball 1; Intramural Basketball 3.

DICK SCHUSTER

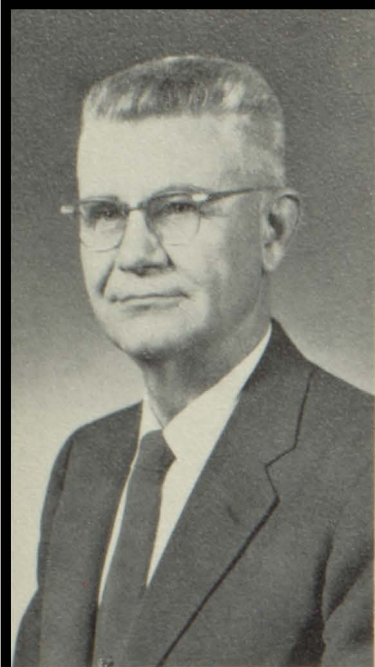
Class Student Council Representative 4; E-club Student Council Representative 3; Senior Play; Kays 4; E-club 2, 3\*; Boys' Chorus 1, 2, 3, 4; Orange and Black Chorale 2, 3, 4; Football 1, 2\*, 3\*, 4\*; Basketball 1, 2, 3\*, 4\*; Track 1, 2\*, 3\*, 4\*; Prom Server.



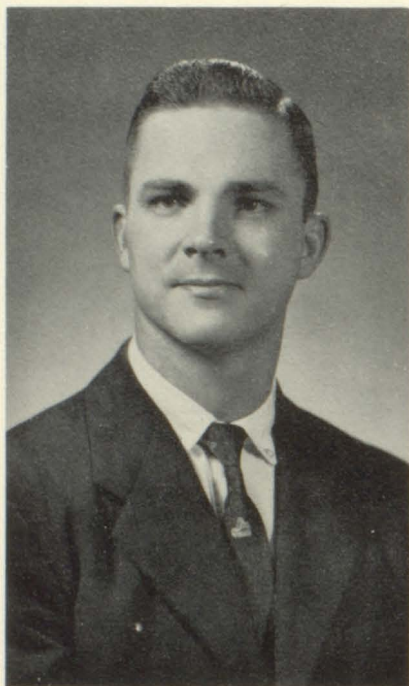
JANE DUNHAM, Sponsor







F. A. FITZGERALD, Sponsor

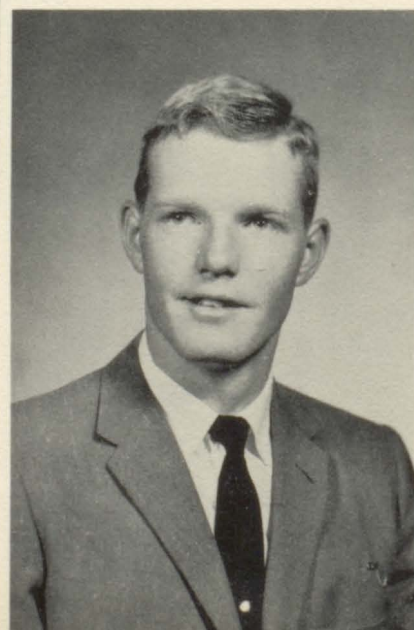


ROBERT PHILLIPS, Sponsor



SHIELA KAY AUGUSTINE

Junior Play; Senior Play; Y-Teens 1; Kayettes 4; Pep Club 3, 4; Girls' Chorus 3, 4; Mixed Chorus 1; Betty Crocker Homemaking Award 4; League Scholarship Tests, Honorable Mention in Sewing and Cooking 3.



DAVID ARMBRISTER

F. F. A. 1, 2, 3, 4.





DONALD AUGUSTINE

Yearbook Staff 4; Newspaper Staff 4;  
Kays 4; F. F. A. 1, 2; Boys' Chorus  
2, 3, 4.

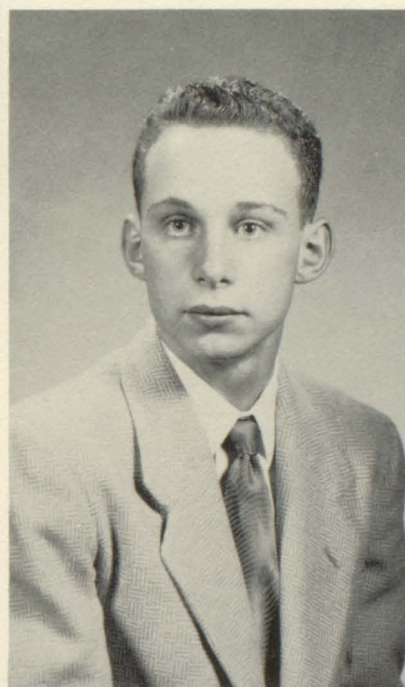


CAROLE BAUGHER

St. Mary's at Dodge City Transfer 3;  
Y-Teens 3; Kayettes 4; Yearbook Staff 4;  
Newspaper Staff 4; Girls' Chorus 3, 4.

GERALD BOOS

Dropped out at semester due to illness.

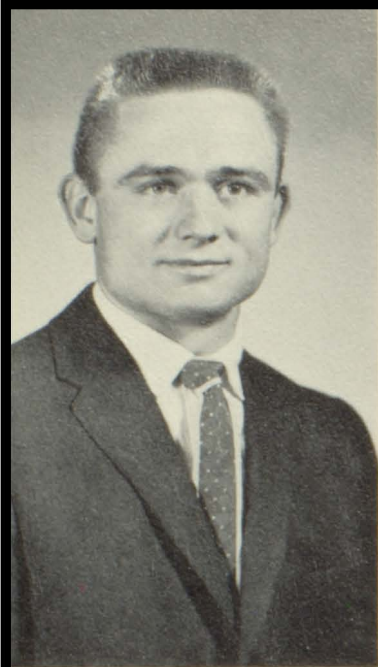


ZEDLA COLBORG

Senior Play; Y-Teens 1\*, 2, 3; Kayettes  
4\*; Pep Club 1, 2, 3, Secretary &  
Treasurer 4; Yearbook Assistant Editor  
4; Newspaper Staff 4; Band 1, 2, 3, 4;  
Majorette 2, 3, 4; Pep Band 1, 2, 3, 4;  
Dance Band 2, 3, 4; Girls' Chorus 1,  
2, 3, 4; Mixed Chorus 1; Orange and Black  
2, 3, 4; Music Contest 4; Homecoming  
Attendant 4; Office Assistant 4; Typing  
Award 3; Reading Award 2, 3; Intramural  
Volleyball 2; Intramural Basketball 1, 2.







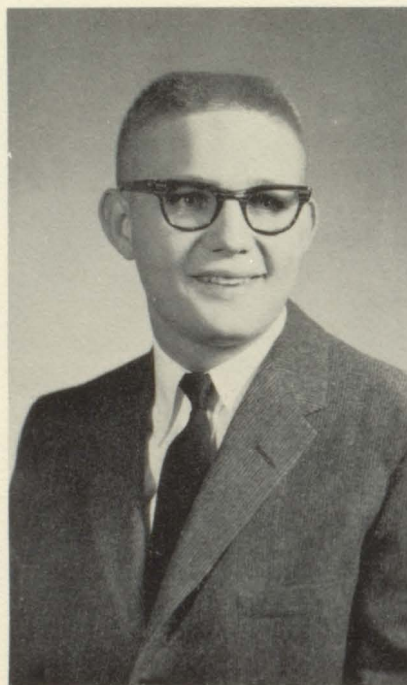
GILBERT BRUNGARDT

Yearbook Staff 4; Newspaper Staff 4;  
Kays 4; E-Club 3; Football 1, 2, 3\*,  
4\*; Basketball 1, 2, 3\*, 4\*; Track  
1, 2, 3\*, 4\*; Homecoming Attendant 4.



EDNA ENGEL

Great Bend Transfer 2; Kayettes 4;  
Pep Club 2, 3; Vice-President 4; Girls'  
Chorus 2, 3, 4; Music Contest 4; Twirp  
Week Attendant 2; Prom Server.



NORMAN DREHER

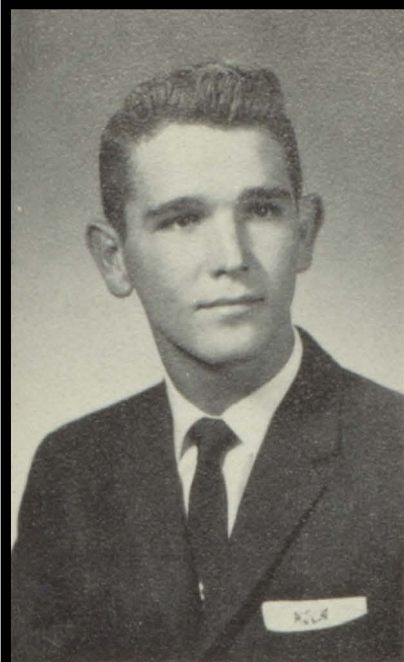
Yearbook Staff 4; Newspaper Staff 4;  
Kays 4; E-club 3; Boys' Chorus 1, 2;  
Football 3\*, 4\*; Track 3.



DIXIE FULLER

Y-Teens 1, 2, 3; Kayettes 4; Yearbook  
Staff 4; Newspaper Staff 4; Band 1; Pep  
Band 1; Girls' Chorus 2, 3, 4.





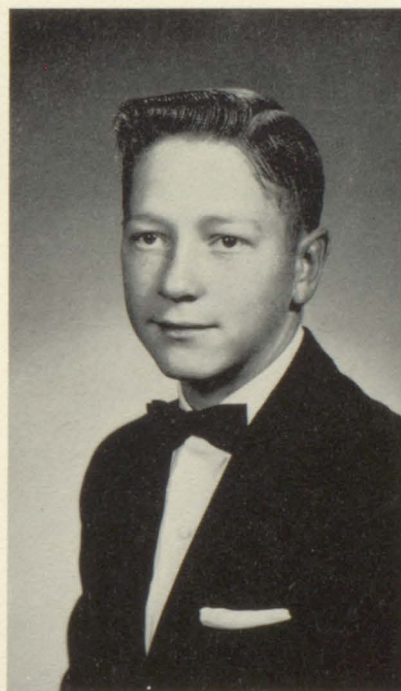
HENRY FISCHER

Class Vice-President 1; E-Club 3;  
F. F. A. 1, 2\*, 3, 4; President 3, 4;  
Football 1, 2, 3\*, 4\*; Basketball 1;  
Track 1; Intramural Basketball 1, 2.



JO ANN GABEL

Girls' Chorus 1, 2, 3.



KENNETH HAAS

Yearbook Staff 4; Newspaper Staff 4;  
Kays 4; E-Club 3; Football 1, 2, 3\*,  
4\*; Basketball 1, 2, 3\*, 4\*; Track 1,  
3; Homecoming Attendant 4.

HELEN GROFF

Senior Play; Y-Teens 1, 2, 3.; Pep Club  
1, 2; Girls' Chorus 1, 2, 3.







DAVID HURT

Class Vice-President 2; Class Student Council Representative 3; Student Council Vice-President 4; Junior Play; Senior Play Student Director; Kays Vice-President 4; E-Club 1, 2, 3; Band 1, 2, 3, 4; Pep Band 2, 3, 4; Dance Band 4; Boys' Chorus 1, 2, 3, 4; Mixed Chorus 1; Orange and Black Chorale 2, 3, 4; Music Contest 2, 4; Football Manager 1, 2, 3, 4; Basketball 1, 2\*, 3\*, 4\*; Track 1, 2\*, 3\*, 4\*; Prom Server; Boys' State; Intramural Ping-Pong 3.



SHARON HENDERSON

Y-Teens 1, 2, 3; Kayettes 4; Girls' Chorus 1, 2, 3, 4; Yearbook Staff 4; Newspaper Staff 4.

DENNIS KINDERKNECHT

Junior Play Student Director; Kay 4; Band 1; Boys' Chorus 1, 2, 3; Basketball 1; Intramural Volleyball 3; Rifle Club 1, 2.



MARY JANE LANG

Y-Teens 1; Kayettes 4; Mixed Chorus 1; Office Assistant 4.







GRANT MERRITT

Class President 1, 2; Class Student Council Representative 3; Student Council President 4; Junior Play; Senior Play; Speech Contest 4; Kays 4\*; E-Club 2, 3; Band 1, 2, 3, 4; Pep Band 1, 2, 3, 4; Dance Band 3, 4; Boys' Chorus 1, 2, 3, 4; Mixed Chorus 1; Orange and Black Chorale 2, 3, 4; Music Contest 3, 4; Football 1, 2\*, 3\*, 4\*; Basketball 1, 2, 3\*, 4\*; Track 1, 2\*, 3\*, 4\*; Prom Server; Boys' State; Leadership Award 3; Play Oscar 3; Rifle Club 1.



DIANA LUEA

Y-Teens 1; Kayettes 4; Pep Club 3, 4. Yearbook Staff 4; Newspaper Assistant Editor, Editor 4; Girls' Chorus 1, 3, 4; Mixed Chorus 1.

FRANCIS MESERVE

Junior Play; Senior Play; Kays 4; Boys' Chorus 1, 2, 3, 4; Football 2, 3, 4\*; Play Oscar 3.

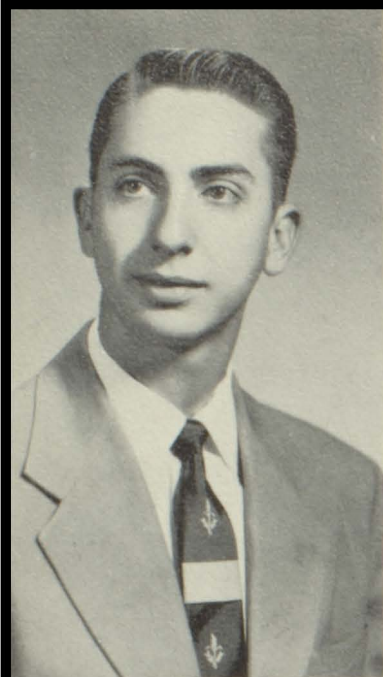


PATRICIA NIERNBERGER

Y-Teens 1, 2, 3; Kayettes 4; Pep Club 1, 3, 4; Yearbook Staff 4; Newspaper Staff 4; Girls' Chorus 1, 2, 3, 4; Mixed Chorus 1; Music Contest 4.







TERRY MIXER

Transfer Ellis to Salt Lake City 3;  
Salt Lake City to Ellis 4; Speech Con-  
test 1, 2; Band 1, 2, 3; Boys' Chorus  
2, 3.

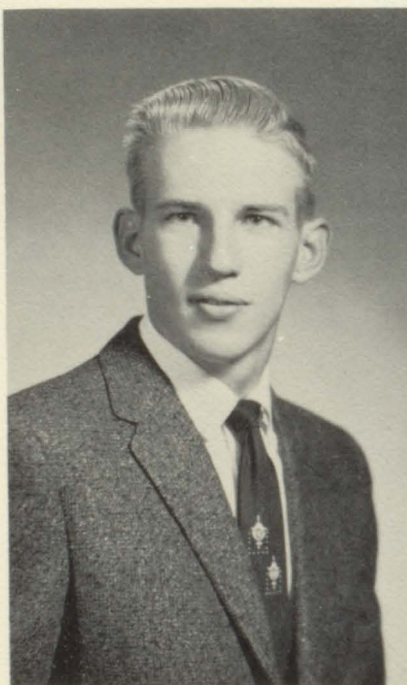


MARY LOUISE ROMEY

Y-Teens 1, 2, 3; Kayettes 4; Yearbook  
Staff 4; Newspaper Staff 4; Girls' Chorus  
2, 3, 4.

GERALD PTASCHEK

Kays 4; Boys' Chorus 3; Track 1, 2;  
Intramural Basketball 1; Intramural  
Volleyball 3.

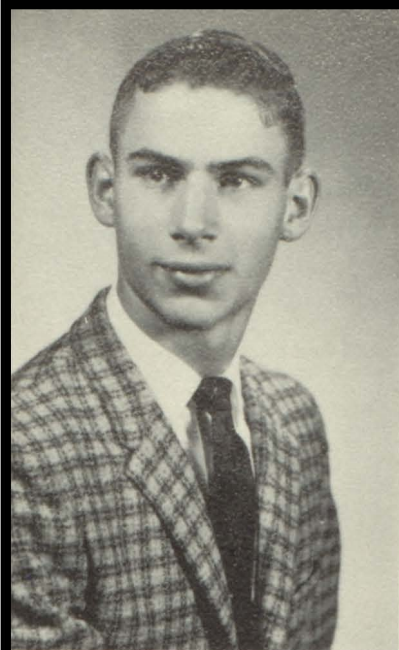


ROSE MARY RUPP

Kayette Student Council Representative  
4; Yearbook Staff 4; Newspaper Staff 4;  
Y-Teens 1, 2, 3; Kayettes 4\*; Pep Club  
3, 4; Girls' Chorus 1, 2, 3, 4; Mixed  
Chorus 1; Intramural Basketball 3.







LAWRENCE PTASCHEK

Kays 4; Boys' Chorus 3; Football 1, 2; Track 1, 3, 4.



BEVERLY SCHUMM

Class Vice-President 3; Senior Play Prompter; Y-Teens 1\*, 2\*, 3\*; Kayette Vice-President 4; Pep Club 1, 2, 4; Yearbook Staff 4; Newspaper Editor 4; Band 1, 2, 3, 4; Majorette 2, 3; Drum Major 4; Pep Band 1, 2, 3, 4; Dance Band 3, 4; Girls' Chorus 1, 2, 3, 4; Mixed Chorus 1; Orange and Black Chorale 2, 3, 4; Music Contest 3, 4; Office Assistant 4; Reading Award 2, 3; Gymnastics 2; Intramural 2, 3; Snowball Service.

JOSEPH RIEDEL

Class Student Council Representative 3, 4; Kays 4; E-Club 2, 3; Football 1, 2\*, 3\*, 4\*; Track 1, 2, 3\*, 4\*; Homecoming King 4; Intramural Basketball 2; Chosen for the Northwestern All-star team.

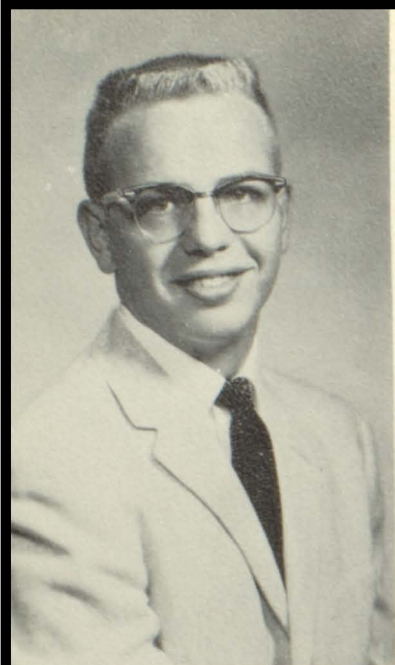


SONDRA SMITH

Class Student Council Representative 2; Student Council Secretary & Treasurer 4; Junior Play; Senior Play and Co-Student Director; Speech Contest 2; Y-Teens 1\*, 2\*, 3\*; Secretary 2; Kayette President 4; Pep Club 1, 3; Yearbook Staff 4; Newspaper Staff 4; Band 2, 3, 4; Girls' Chorus 1, 2, 3, 4; Mixed Chorus 1; Orange and Black Chorale 2, 3, 4; Music Contest 3, 4; Snowball Queen 3; Girls' State.







BILLY SULLIVAN

Enlisted in the Navy at semester.



CAROL WEBER

Y-Teen Student Council Representative 3; Pep Club Student Council Representative 4; Junior Play; Senior Play; Speech Contest 4; Yearbook Staff 4; Newspaper Staff 4; Y-Teens 1, 2, 3\*; Kayettes 4\*; Pep Club 1, 2, 3, 4, President 3; Band 2, 3, 4; Pep Band 2, 3, 4; Girls' Chorus 1, 2, 3, 4; Mixed Chorus 1; Orange and Black Chorale 2, 3, 4; Kayette Christmas Dance Queen 4; Intramural Volleyball 4.

ROBERT WEBER

Senior Play; Kays 4; E-Club 2, 3; Boys' Chorus 3; Orange and Black Chorale 3; Football 3\*, 4\*; Basketball 3\*; Track 2\*, 3\*, 4\*.

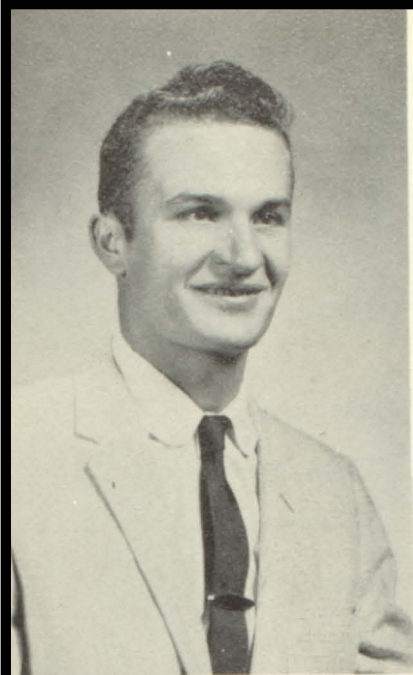


CAROLYN WEIGEL

Victoria Transfer 3; Y-Teens 3; Kayettes 4; Yearbook Staff 4; Newspaper Staff 4; Girls' Chorus 3, 4.







CHARLES WEIGEL

F. F. A. 1, 2, 3, 4.



NORA WIESNER

Kayettes 4; Pep Club 3, 4; Girls' Chorus  
2, 3, 4; Snowball Attendant 4.



LEON WEIGEL

F. F. A. 2, 3, 4; Band 1, 2, 3; Orange  
and Black Chorale 4; Boys' Chorus  
1, 2, 3, 4; Intramural Volleyball 2.



STEVE WOLF

Senior Play; Kay 4\*; Yearbook Staff  
4; Newspaper Staff 4; Band 1, 2, 3, 4;  
Pep Band 1, 2, 3, 4; Dance Band 2, 3;  
Boys' Chorus 3, 4; Orange and Black  
Chorale 3, 4; Football 1; Basketball 1;  
Track 1, 2, 3\*, 4\*.



## *Class History*

### Freshman Year

We entered high school in September, 1955, with 49 members. Our officers were: Grant Merritt, president; Henry Fischer, vice-president; Althea Nelson, secretary-treasurer; Dennis Augustine, Maryl Kennedy, Lanny Ocamb, Jean Zimmerman, student council representatives.

Our class sponsors were: Mr. Parker and Mrs. Lewis.

Over the summer we lost: Dennis Augustine, Lanny Ocamb, and Harold Hagen.

Our chief money raising project was a Hobo Day.

We placed first with our float for homecoming.

### Sophomore Year

We began our sophomore year with 51 members, gaining John Channell, Robert Homler, Bill Sullivan, Karl Battin, and Edna Engel.

Officers were: Grant Merritt, president; David Hurt, vice-president; Althea Nelson, secretary-treasurer; Sondra Smith, Maryl Kennedy, and Jean Zimmerman, student council representative.

Our class sponsors were: Mr. Meeker and Mrs. Gurtler.

Defeating the many times State Basketball Champions, Russell, the complete student body had a "walk-out." Fate wasn't with us, because a blizzard kept us at home in the morning and brought us back to school that afternoon.

We placed first with our float for homecoming.

Over the summer we lost: John Channell, Karl Battin, Robert Homler, Betty Honas, Maryl Kennedy, Eddie Ketterman, and Margaret Weaver.

### Junior Year

We began our junior year with 49 members gaining Mike Price, and Karl Battin (second semester).

Officers were: Althea Nelson, president; Beverly Schumm, vice-president; Joan Erbert, secretary; Janice Pinney, treasurer; Grant

Merritt, David Hurt, and Joseph Riedel, student council representative.

Class sponsors were: Mr. Phillips, Miss Dunham, and Mr. Horacek.

Our Junior Play, a western comedy, "Ghost Road" had a cast of thirteen.

Grant Merritt, Francis Merserve, and Leroy Gnad received outstanding workmanship awards. The student director was Dennis Kinderknecht.

Althea Nelson and Grant Merritt received Leadership Awards.

Our class was the first to receive their class rings in the junior year.

We chose our class colors, lavender and white, and our class flower, the orchid. Our class motto is: "They conquer, who believe they can."

The Junior and Senior Prom was held on May 9, 1958. A nightclub setting with the theme FLAMINGO was carried out in the colors pink and black.

Over the summer we lost Al Keller, Mike Price, and Karol Battin.

### Senior Year

We began our senior year with 45 members, but lost Bill Sullivan at the end of the first semester.

Officers were: Althea Nelson, president; Jean Zimmerman, vice-president; Joan Erbert, secretary; Janice Pinney, treasurer; Gary Kroeger, Richard Schuster, Leroy Gnad, student council representative.

Class sponsors were: Miss Dunham, Mr. Phillips, and Mr. Fitzgerald.

Joseph Riedel was named a member of the All-Star football team in the state of Kansas. His position was right tackle.

Our Senior Play, a courtroom drama, "You The Jury" had a cast of fifteen. Student directors were Sondra Smith and David Hurt. Grant Merritt received an outstanding workmanship award.

The senior class went to Denver, Colorado for their senior trip, on the weekend of April 25-27. While there, we went to the ice follies.

The senior class of 1959 will take their last walk in the high school at Commencement on May 20, 1959.





KENNY



DIXIE



CAROLE



EDNA



MARY



JEANNIE



STEVE



PAT



SHARON



JOAN



GIB



DIANA

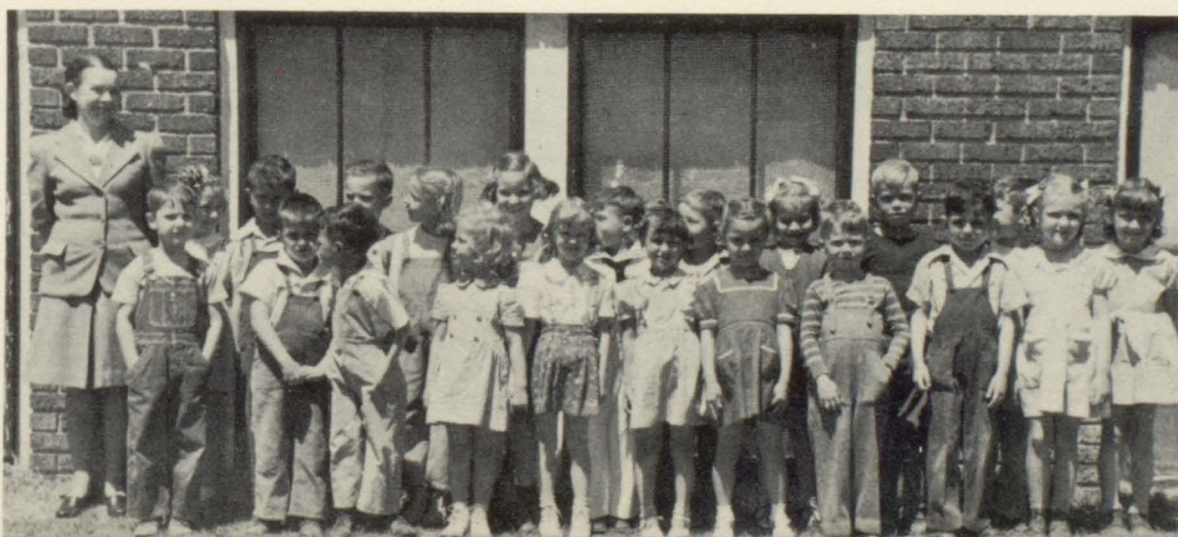
## Baby Snaps



DON

FIRST ROW: Terry Mixer, Pete Peterson, Steve Wolf, Sharon Henderson, Mary Beth Schuerman, Dixie Fuller, Cathleen Reidel, Dennis Kinderknecht, David Hurt, Mary Margaret Brummit, SECOND ROW: Mrs.

Lucille Rolland, Sandra Smith, Dickie Schuster, Lanny Ocamb, Carol Weber, Janice Pinney, Phillip Kohn, Buster Merritt, Althea Nelson, Howard Schmidt, Ronnie Weigand, Beverly Schumm.







LEE



DICK



NORA



ZELDA



JANICE



MARY JANE



GARY



DENNIS



BUSTER  
SONDRA



BEV



SHIELA

HENRY



JOANN

ALTHEA



CAROL





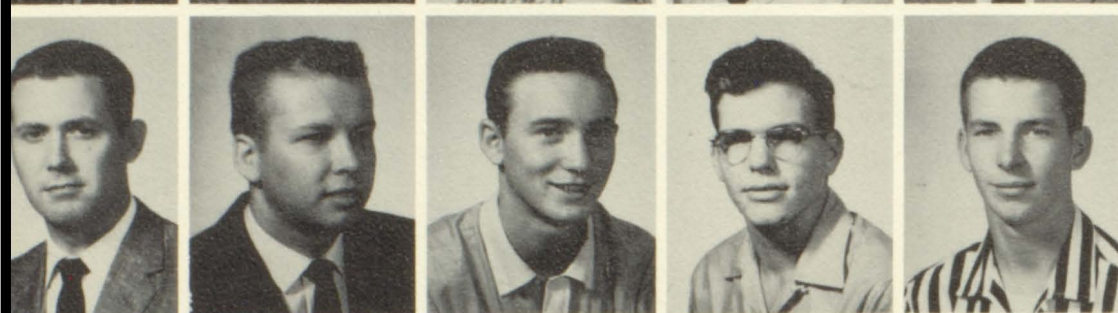


Undergrads 59

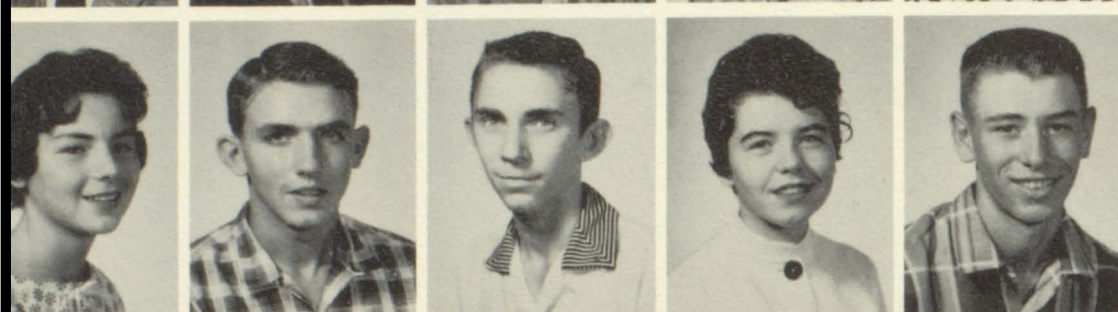




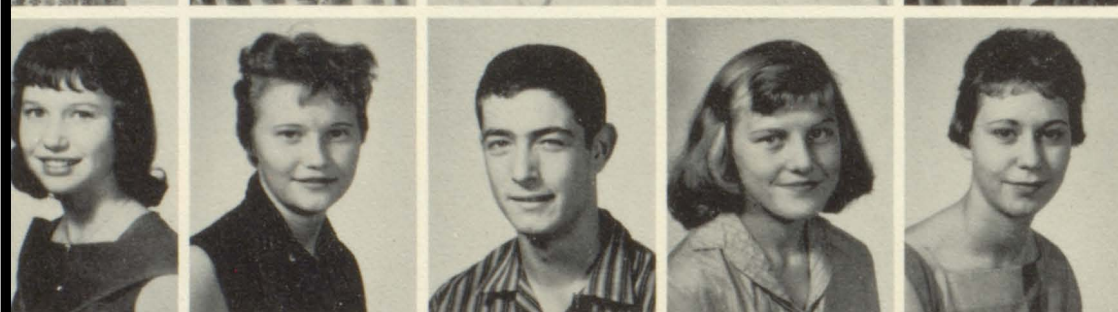
DEAN DENNING - President  
 WAYNE BLACKBURN - Vice-Pres.  
 LOLA LUEA - Secretary  
 BARBARA BITTEL - Treasurer  
 MR. ARLIN MILLS - Sponsor



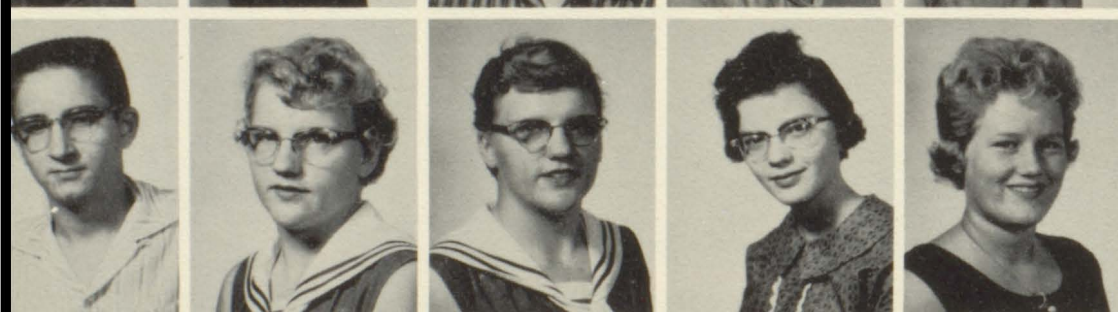
MR. LeROY HIPKINS - Sponsor  
 MR. DeROY ROGGE - Sponsor  
 BILL HONAS - Rep.  
 RAY PINNEY - Rep.  
 GARY WENTLING - Rep.



BILLIE LEE ALLEN  
 VERLIN ARMBRISTER  
 DARRELL ARMBRUSTER  
 GLADYS AUGUSTINE  
 JEROME AUGUSTINE



MARY JANE AUGUSTINE  
 SHIRLEY AUGUSTINE  
 TOM BEACH  
 JOANNE BONGARTZ  
 MARY BRADSHAW



BARRY DUBACH  
 DARLENE DINKEL  
 MARLENE DINKEL  
 MARY DORZWEILER  
 BARBARA DOUGLAS

## *Juniors*





DOUGLAS ENGEL  
DAVID FISCHER  
LILLIAN FISHER  
TERRY FITZGERALD  
GARNIS HAGEN



ERNEST HONAS  
CAROL KING  
RONALD KING  
BONNIE KINGSLEY  
EDNA LOFLIN



DONNA LUEA  
DARRELL MOORE  
BARBARA PFEIFER  
MAC REED  
MARILYN SCHOENBERGER



BETTY STORM  
BETTY WASINGER  
LeROY WEAVER  
HARRY WEBER  
KAY WEBER



ORVAL WEIGEL  
KATHLEEN WINDHOLZ

Members of the Junior Class elected the following students throughout the year. President, Dean Denning; Vice-President, Wayne Blackburn; Secretary, Lola Luea; Treasurer, Barbara Pfeifer; Representatives, Ray Pinney, William Honas, Gary Wentling. Sponsors of the class are: Mr. Hipkins and Mr. Mills.

We are sorry to say that we have lost four students, they are: Larry Rowland, Bernita Augustaine, Rosita Herman, Beverly Keagy. We are happy to know that a few new faces were also added. Marilyn Schoenberger, Mary Lou Bradshaw, Shirley Augustine, Douglas Engel.

Activities taking place during the year were as such: Junior and Senior Prom. Homecoming float which took first place "Orchids to our Team." The Juniors have sponsored all the dances after the ball games.





GARY GERBER - President  
 PATTY PFEIFER - Vice-President  
 JULIA SHURCK - Secretary-Treas.  
 MR. CLIFF STANSBURY - Sponsor  
 MR. ROBERT SCHNEIDER  
 Sponsor



DIANE KELLER - Rep.  
 SALLY FULLER - Rep.  
 DAVID KINGSLEY - Rep.  
 EARL ALLOWAY  
 DWAYNE ASHBAUGH



FRANCIS AUGUSTINE  
 GARY AUGUSTINE  
 MARY ANN AUGUSTINE  
 VERGIL AUGUSTINE  
 JAMES AUST



LILLIAN BEGLER  
 NORMA BONGARTZ  
 DENNIS BOOS  
 JANET BRADSHAW  
 RONALD BRADSHAW



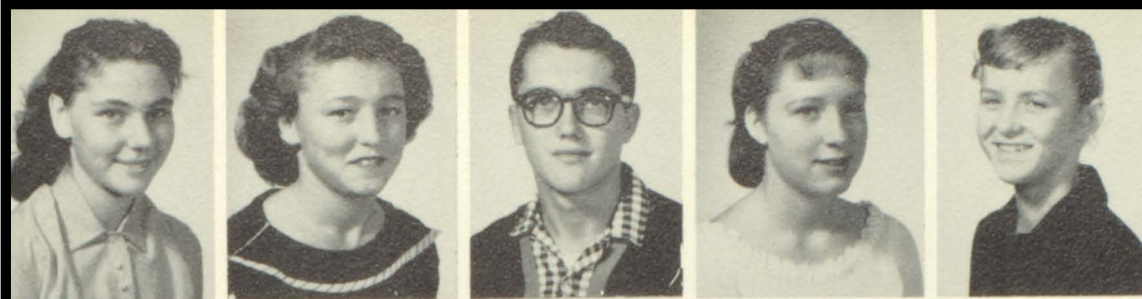
LORRENE BROWN  
 RICHARD BROWN  
 SONNY BRUNGARDT  
 BUD CAMPBELL  
 JOYCE DEUTSCHER



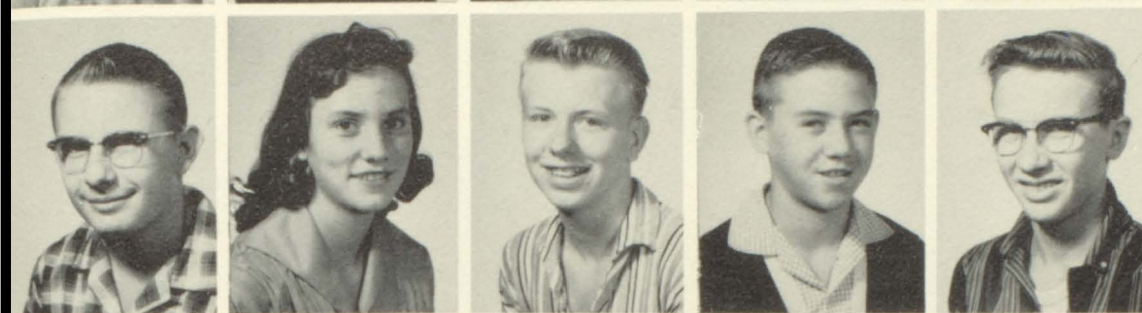
KENNY DEUTSCHER  
 VIRGINIA DINKEL  
 JERRY DREILING  
 DAVID ERBERT  
 WARNER ERTL

## *Sophomores*





CLARA FANSHIER  
BARBARA FLAX  
DANIEL GESCHWENTNER  
LINDA HALL  
MICKEY HENDERSON



KENNETH HLADEK  
STELLA HONAS  
RONALD HUBBS  
LEROY JACOBS  
JOHN JACQUES, JR.



LOIS KINDERKNECHT  
TOM KINDERKNECHT  
ROBERT KOHLRUS  
VIOLA KUTINA  
SIG LANG



DORIS LUEA  
CAROL MAYES  
JULIE NICHOLSON  
NORMAN RUPP  
VIRGIL SCHUSTER



SUSAN SCOTT  
GLORIA SCHOENBERGER  
MARTHA SPREEN  
JACKIE SUE STEBBINS  
JON SULLIVAN



TERESA VINE  
RICHARD WEBER  
KENNETH WINDHOLZ

The Sophomore Class started this year with the loss of Sharon Chipman, Terry Hillman, Eddie Thompson, and Robert Rogers. They found they had gained Gloria Schoenberger, Ronald Bradshaw, and Janet Bradshaw.

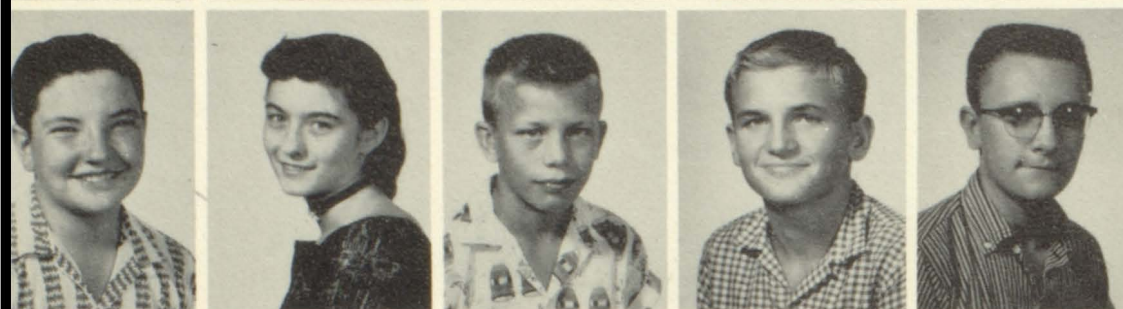
The class sponsors this year are Mr. Cliff Stansbury and Mr. Robert Schneider. The class officers are: President, Gary Gerber; Vice-President, Patty Pfiefer; Secretary-Treasurer, Julia Shirck; and Representatives are Sally Fuller, Diane Keller, and David Kingsley.

This year they had a food sale and party on October 4. On October 17, they held an assembly called the "Barry Omo Show." For Homecoming, they took second place with their float, "It's in a Nutshell." November 15, they had a box supper and a party.





ROBERT SCHMIDT - President  
VERLIN ENGEL - Vice-President  
ROSE ANN LANG - Secretary  
DAVID SCHOECH - Treasurer  
BARBARA MAY - Rep.



ALLAIRE HOMBURG - Rep.  
GLORIA HELGET - Rep.  
LAYNE ANDERSON  
ALVIN ARMBRISTER  
RONALD ARMBRUSTER



JACK BALCOMBE  
DONALD BIEKER  
CYNTHIA BITTEL  
ALFRED BOLLIG  
ROBERT BRADSHAW



NANCY BRAY  
BARBARA BROWN  
RALPH BURNS  
EDWARD DINKEL  
EDWIN DORZWEILER



EDDIE DOUGLAS  
BRUCE FELDKAMP  
BEULAH FISCHER  
EMMETT FULLER  
GARY GIBSON



MRS. HELEN GURTLE - Sponsor  
MR. LEW HITCH - Sponsor

## *Freshmen*

The Freshman Class elected for officers: President, Robert Schmidt; Vice-President, Verlin Engel; Secretary, Rose Ann Lang; Treasurer, David Schoech; Representatives, Barbara May and Allaire Homburg. The class had chosen Mrs. Gurtler and Mr. Hitch for their class sponsors.

Added to the class were 29 new students bringing the number to 55.

The activities throughout the year for the freshmen will be a Hobo Day, Freshman Assembly and their float for Homecoming.





PHYLLIS GNAD  
KATHLEEN HAMBURG  
DAVID HAYS  
JUDY HELGET  
MARGARET HONAS



PHYLLIS JOHNSON  
JERRY KELLER  
MARGARET KELLER  
JOY KELLOGG  
ELAINE KING



RITA KISNER  
ANN KOHL  
PAULETTA LUEA  
GARY MILLER  
PHILIP NICHOLSON



DICK RIDWAY  
JEANNE RIFFEL  
VICKY ROMNEY  
CLARENCE RUPP  
HAROLD SCHMIDT



OLIVIA SNIDER  
JEANNE STORM  
RICHARD WALDSCHMIDT  
MARY SUE WALTERS  
BETTY JO WEAVER

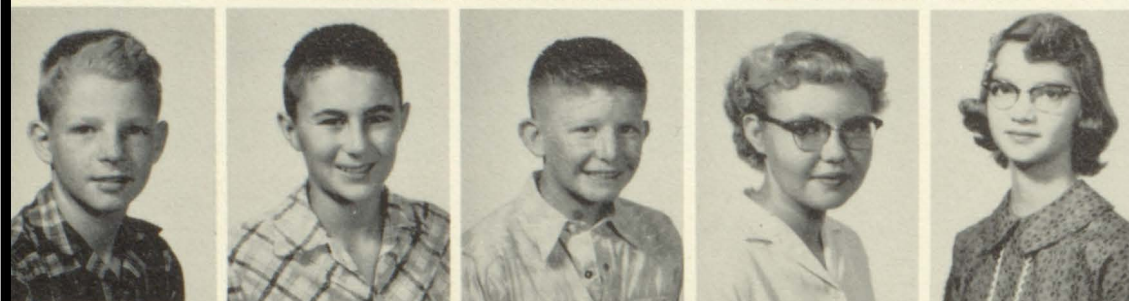


SHIRLEY WEBER  
ELGERINE WEIGEL  
CAROL WIESNER  
CYNTHIA YOUNG  
RONALD ZACHMAN

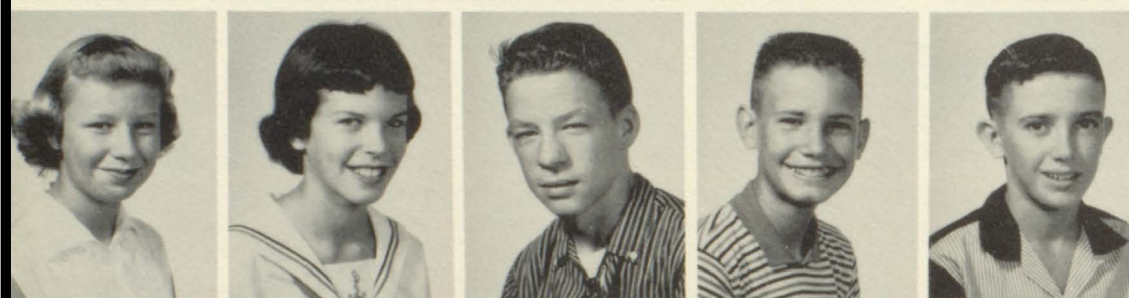




JIMMY SHIRCK - President  
ELLEN ARMBRISTER - Vice-Pres.  
JOLEEN DEUTSCHER - Sec.-Treas.  
CAROL LORIMOR - Rep.  
MRS. LORA LONG - Sponsor



HAROLD ARMBRISTER  
JOHN ARMBRUSTER  
DICKIE BATTIN  
CLAUDIA DEUTSCHER  
JUDY DORZWEILER



ANITA FRANTA  
LINDA GURTLER  
LARRY MALLORY  
SKIPPY MATTESON  
RONALD MILLER



MARY ANN MAYES  
ANN NELSON  
KAY REEVES  
RICHARD ROBERTS  
STEVE ROPER



JUANITA ROTH  
BILLY SEIBEL  
BARBARA VINE  
SANDY WARTA  
DENNIS WOLF

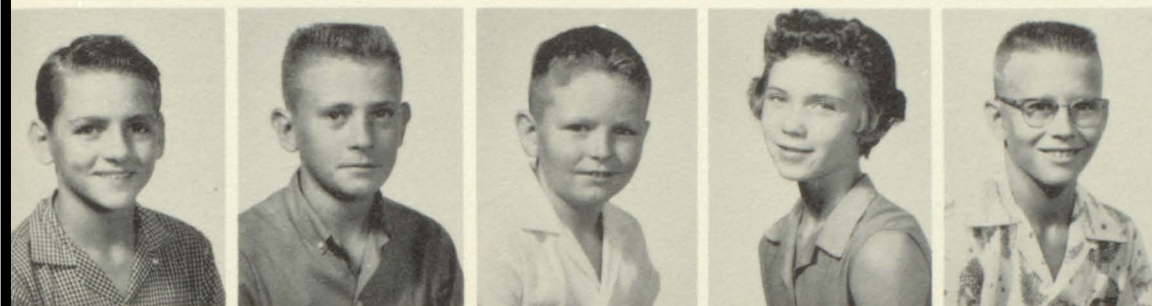
Under the leadership of their President, Jimmy Shirk and guidance from their sponsors, Mr. Martin and Mrs. Long, the eighth grade class won third place on their Homecoming float with the theme "Roll 'em in." They also drew names and had a Christmas party. The class has 24 members this year having lost none and having gained Joleen Deutscher.

## *Eighth Grade*





SANDY FULLER - President  
CAROL HUBER - Vice-President  
GAY PEARSON - Secretary-Treas.  
DOUGLAS BALCOMBE - Rep.  
MR. JIM MARTIN - Sponsor



WILLIAM ARMBRISTER  
PAUL ARMBRUSTER  
DONALD BENNETT  
PEGGY BLACKBURN  
STEVEN DEUTSCHER



MARY ANN DINKEL  
PEGGY DOUGLAS  
RICHARD FRIES  
JAY HAYS  
DOUGLAS HURT



LEON MAY  
SHERRY OLMSTEAD  
RICHARD ROBERTSON  
TERRY SCHOENTHALER  
SHERYL SIMMINGER



DICK WEATHERHOLT  
DOUGLAS YOUNG

## Seventh Grade

Students holding office in the seventh grade were: Sandy Fuller, Carol Huber, Gay Pearson, and Douglas Balcombe. Their sponsor, Mr. Martin has been very active in class activities. New members of the class Mary Ann Dinkel and Keith Schoenthaler. Leaving the class at 24.

The float "Roll 'Em In" took third place in 1958. The Christmas party will include both classes, seventh and eighth.





"I Get In On It Too" said Dick



The Four Luea Sisters



Crocodile Tears



Stagger Lee



Semester transfers: Brenda Dirks, Martha Beals, Mike Haas, and Georgia Ridgway.



Back In The Lobby



## *Snap Shots*



Decision of the Crowd



Royalty!



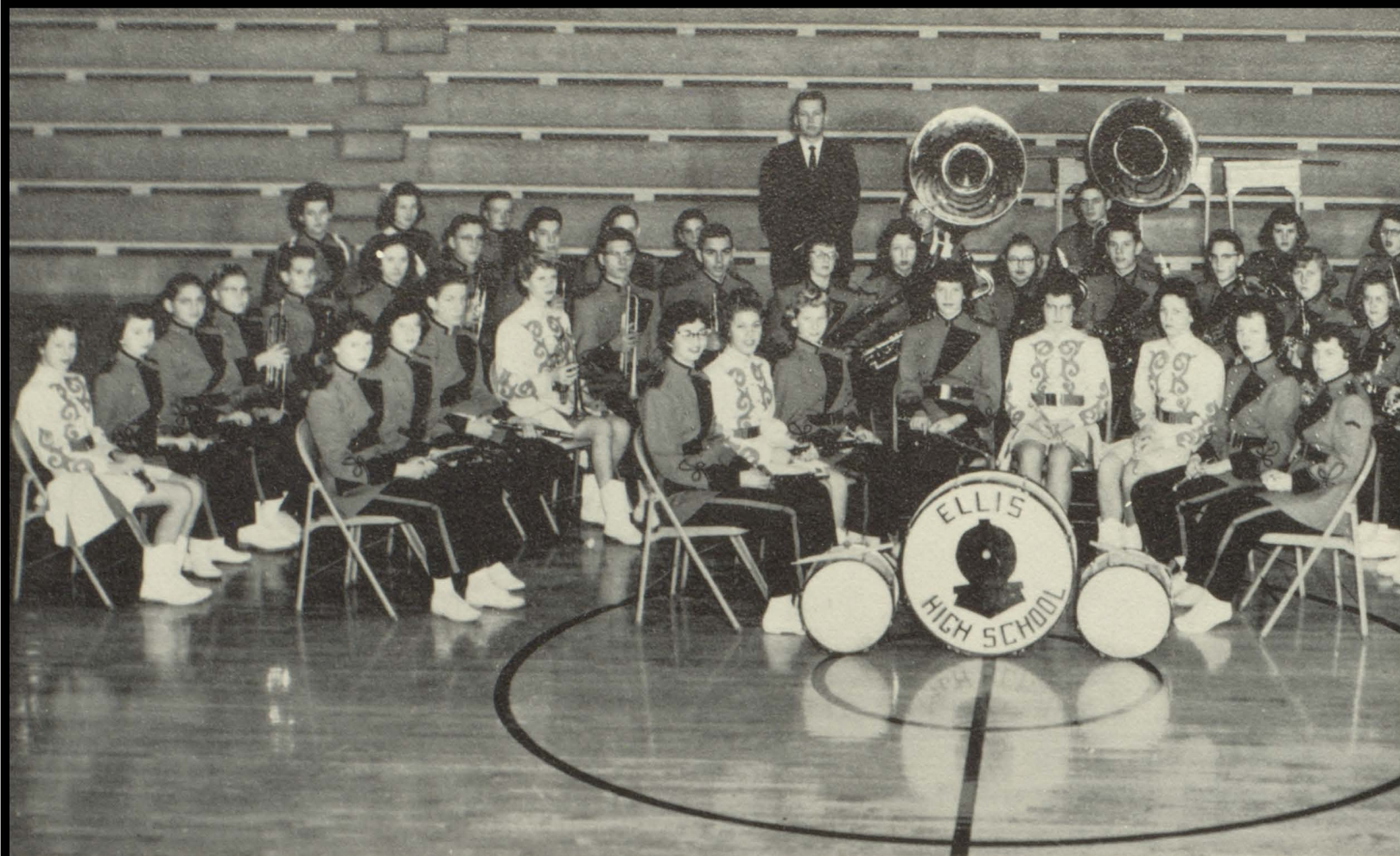
"--the band played on."





# Activities 59





#### CLARINETS

Sondra Smith  
Bonnie Kingsley  
Kay Reeves  
Ellen Armbruster  
Larry Mallory  
Gay Pearson  
Sandy Fuller  
William Armbruster

#### CORNETS

Zelda Colborg  
Steve Wolf  
David Hurt  
Leon May  
Doug Hurt  
Olivia Snider  
Ronnie Armbruster  
Bruce Feldkamp  
Richard Robertson  
Billy Seibel

#### DRUMS

Carol Weber  
Phyllis Johnson  
Dickie Ridgway  
Billie Lee Allen  
(not pictured)  
Juanita Roth  
(not pictured)

#### OBOE

Ann Nelson

#### BASSON

Joy Kellogg

#### FLUTES

Linda Gurtler  
Barbara May  
Nancy Bray  
Julie Nicholson  
Barbara Pfeifer

#### TENOR SAXOPHONES

Martha Beals  
Claudia Deutscher  
Garnis Hagen  
Janice Pinney

#### ALTO SAXOPHONES

Joanne Bongartz  
Carol Huber  
Carol Lorimer  
Orval Weigel  
Sandy Warta  
Althea Nelson

#### BASS

Allaire Homburg  
Buster Merritt

#### HORNS

Sheryl Simminger  
Carol Mayes  
Susan Scott

#### TROMBONES

Barbara Vine  
Paul Armbruster  
Dickie Weatherholt  
Douglas Balcombe  
Diane Keller  
Patty Pfeifer  
Emmett Fuller  
(not pictured)

#### BARITONES

Gary Miller  
Donald Bennett  
Jimmy Shirck  
Beverly Schumm

#### DIRECTOR

DeRoy Rogge





Beginning in August, the Orange and Black Band started preparation for a season full of activities.

Under the direction of DeRoy Rogge, in his first year at Ellis, the band first appeared at Hutchison Fair. Two other appearances away from home were the KU Band Day and and Armistice Day football game at Wakeeney.

Spring appearances included a concert March 10, music contest April 3 and 4, and league band clinic at Palco, April 28.

## *Orange and Black Band*

EKEY STUDIO

MAJORETTES: Althea Nelson, Bonnie Kingsley, Gay Pearson, Barbara May, Nancy Bray, Zelda Colborg, Drum Major, Beverly Schumm.



FINCH'S





FIRST ROW: Left to Right; Mr. Rogge, Althea Nelson, Janice Pinney, Sondra Smith, Carol Weber, Mary Bradshaw, Patty Pfeifer, Susan Scott, Bonnie Kingsley, Janet Bradshaw, Beverly Schumm, Jeannie Zimmerman, Barbara Pfeifer, Billie Lee Allen, Sheila Augustine, Mary Jane Augustine, Lola Luea, Phyllis Johnson. SECOND ROW: Paulette Luea, Ann Kohl, Clara Fanschier, Joy Kellogg, Georgia Ridgeway, Barbara May, Nancy Bray, Rose Ann Lang, Shirley Weber, Elgerine Weigel, Julia Shirck, Edna Loflin, Norma Bongartz, Jo Ann Bongartz, Viola Kutina, Dixie Fuller, Mary

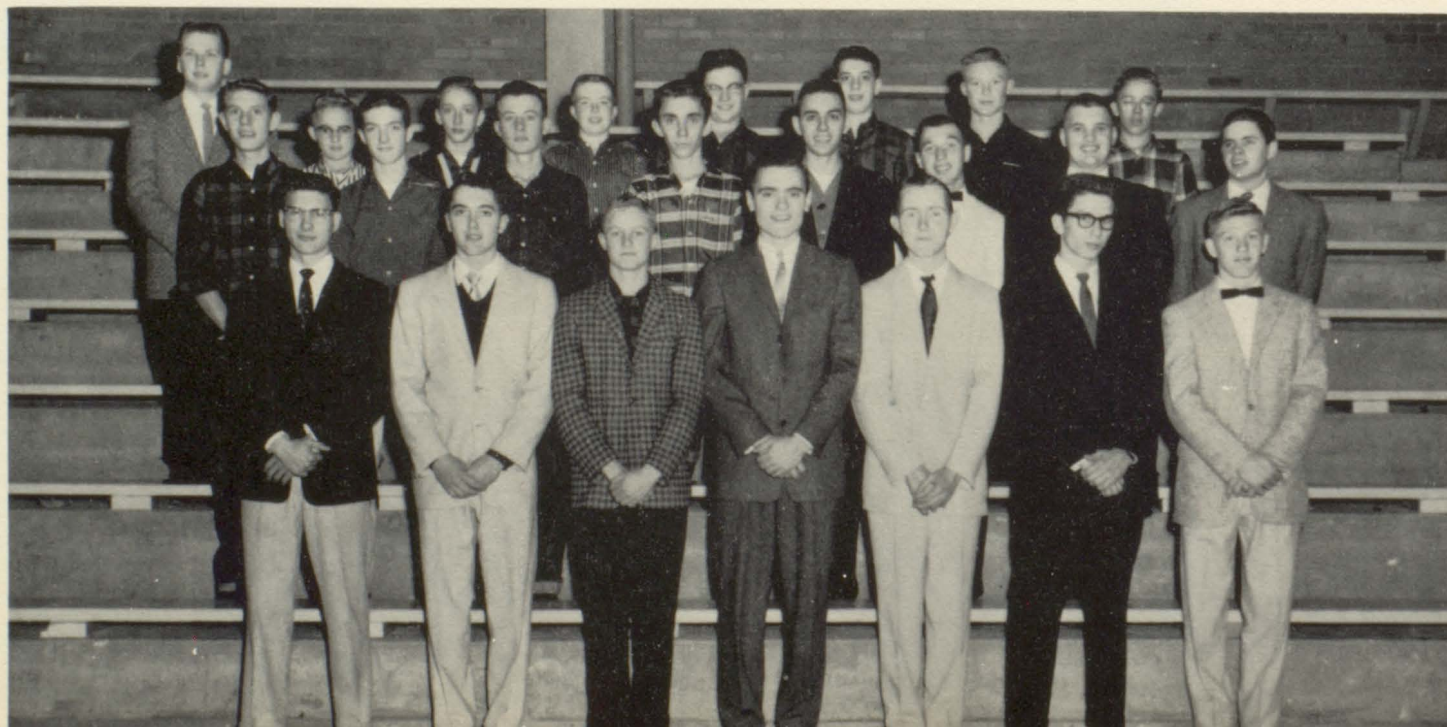
Louise Romey. THIRD ROW: Kay Weber, Carol King, Betty Kay Storm, Shirley Augustine, Gloria Helget, Lois Kinderknecht, Linda Hall, Jackie Sue Stebbins, Carole Baugher, Edna Engel, Patty Niernberger, Darlene Dinkel, Kathleen Windholz, Barbara Douglas, Marlene Dinkel, Sharon Henderson, Mary Louise Dorzweller. FOURTH ROW: Theresa Vine, Carol Mayes, Diana Luea, Rose Mary Rupp, Zelda Colborg, Betty Wasingner, Stella Honas, Donna Luea, Mary Jane Lang, Carrie Weigel, Carol Wiesner, Cynthia Bittle, Lillian Begler, Doris Luea, Martha Spreen.

## *Girls' Chorus*

## *Boys' Chorus*

BACK ROW: Left to Right; DeRoy Rogge, Director; Clarence Rupp, David Schoeck, Dick Ridgway, Allaire Homburg, Bruce Feldkamp, Norman Rupp. SECOND ROW: Garnis Hagen, Phil Nicholson, Leon Weigel, Darrell Armbruster, David Hurt, Donald

Augustine, Francis Meserve, Buster Merritt. FRONT ROW: Steve Wolf, Daniel Geschwentner, Gary Gerber, Bud Campbell, Mac Reed, Dick Schuster, Leroy Gnad.







FRONT ROW: Patty Pfeifer, Julie Nicholson, Susan Scott, Joy Kellogg, Joan Erbert, Zelda Colborg, Jean Zimmerman, Billie Lee Allen, Barbara Pfeifer. SECOND ROW: Althea Nelson, Sondra Smith, Carol Weber, Bonnie Kingsley, Janice Pinney, Beverly Schumm, Jackie Sue Stebbins, Julia Shirck, Sally Fuller, Diane Keller. THIRD

ROW: Mr. Rogge, Daniel Geschwentner, Bud Campbell, Leon Weigel, Mac Reed, Gary Gerber, Steve Wolf, Allaire Homburg, Bruce Feldkamp. LAST ROW: Leroy Gnad, Richard Schuster, David Hurt, Buster Merritt, Darrell Armbruster, Orval Weigel, Garnis Hagen.

## *Orange and Black Chorale*

### *Dance Band*

FRONT ROW: Garnis Hagen, Janice Pinney, Sandy Warta, Althea Nelson. SECOND ROW: Mr. Rogge, David Hurt,

Zelda Colborg, Julie Shirck. LAST ROW: Buster Merritt, Beverly Schumm. Not Shown: Sondra Smith.

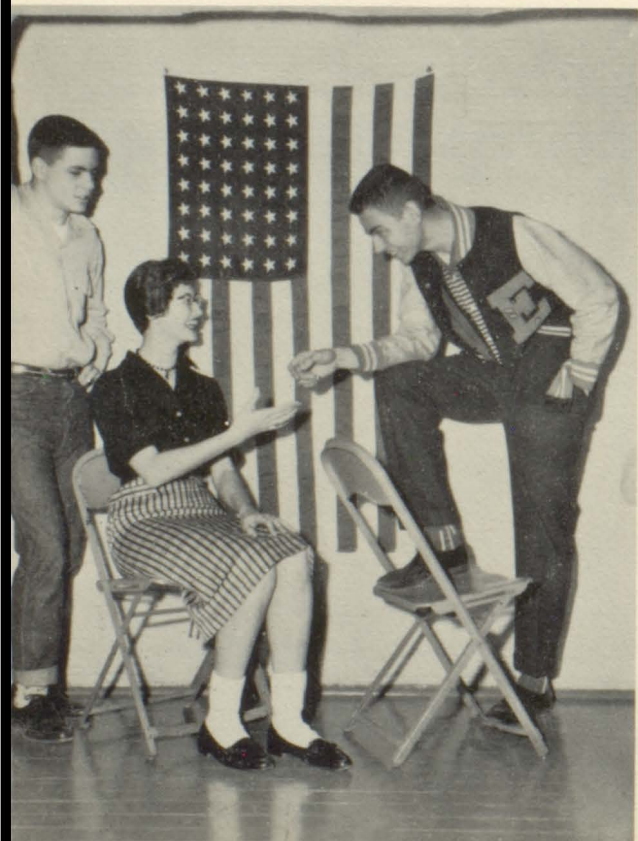






BACK ROW: Kenneth Deutscher, Allaire Homburg, Carol Weber, Richard Schuster, Gary Kroeger, Gary Wentling, Ray Pinney, David Kingsley, Douglas Balcombe. STANDING: Gloria Helget, Nancy Bray, Barbara May, Sally Fuller, Diane Keller, Carol

Lorimar. SITTING: Leroy Gnad, Joe Riedel, Buster Merritt, David Hurt, Sondra Smith, Mr. Bray, Rose Mary Rupp, Bill Honas.



## Student Congress

Student Congress, governing body of Ellis High School, is composed of elected representatives from each class and organization. The sponsors are Mr. Bray and Mr. Fitzgerald.

The activities sponsored by Student Congress are Homecoming and Twirp Week.

Twirp Week, May 11 to 15, is the time the girls play the part of the gentlemen. The theme for 1959 was "Sadie Hawkins Week." Climaxed by a dance ruled by a king and queen, the week is the time for wearing fads. Persons violating the Twirp Week code are tried by a Kangaroo Court.

Buster Merritt, president; Sondra Smith, secretary-treasurer; and David Hurt, vice-president.





BACK ROW: Carol Mayes, Linda Gurtler, Sandy Warta, Kay Reeves, Sheryl Simminger, Sherry Olmstead, Sandy Fuller, Shiela Augustine, Mary Jane Augustine, Billie Lee Allen, Beverly Schumm, Betty Ann Wasinger, Barbara Bittel, Mrs. Wallace, Sponsor. THIRD ROW: Barbara Vine, Ann Nelson, Carol Lorimor, Ellen Armbruster, Anita Franta, Juanita Roth, Judy Helget, Phyllis Gnad, Betty Jo Weaver, Nancy Bray, Jeannie Riffel, Jackie Sue Stebbins, Zelda Colborg, Secretary-Treasurer; Lorrene Brown, Stella Honas. SECOND ROW: Phyllis Johnson, Jeanne Storm, Ann Kohl, Joy Kellog, Cynthia

Bittel, Linda Hall, Lois Kinderknecht, Doris Luea, Lillian Begler, Diana Luea, Julia Shirck, Rose Mary Rupp, Kathleen Windholz. FIRST ROW: Edna Engel, Vice-President; Pat Niernberger, Gladys Augustine, Nora Wiesner, Edna Loflin, Claudia Deutscher, Janice Pinney, Carol Weber, Representative; Mary Dorzwieler, Barbara May, Betty Kay Storm, Lillian Fisher, Lola Luea. FRONT ROW: Patty Pfeifer, Jean Zimmerman, Bonnie Kingsley, Althea Nelson, Barbara Pfeifer, President.

## *Pep Club*



Barbara Pfeifer, Althea Nelson, Bonnie Kingsley, Head Cheerleader; Jean Zimmerman, Patty Pfeifer.

Sponsored by

CITY CAFE AND ELLIS HOTEL





HOLDING BANNER: Virgil Augustine, Ronald Bradshaw. FOURTH ROW: John Jacques, Dennis Boos, Sig Lang, Charles Weigel, Leon Weigel, David Armbruster. THIRD ROW: Kenneth Deutscher, Ronald Armbruster, Alvin Armbruster, Ronald Zachman, Jerry Keller, David Hayes, Robert Bradshaw. SECOND ROW: Verlin

Engel, Richard Ridgway, Verlin Armbruster, Ronald King, Dean Denning, Terry Fitzgerald, Virgil Schuster. FRONT ROW: David Fischer, Mr. Robert Schneider, Orval Weigel, Gary Wentling, Henry Fischer, Ernie Honas, Darrell Armbruster.

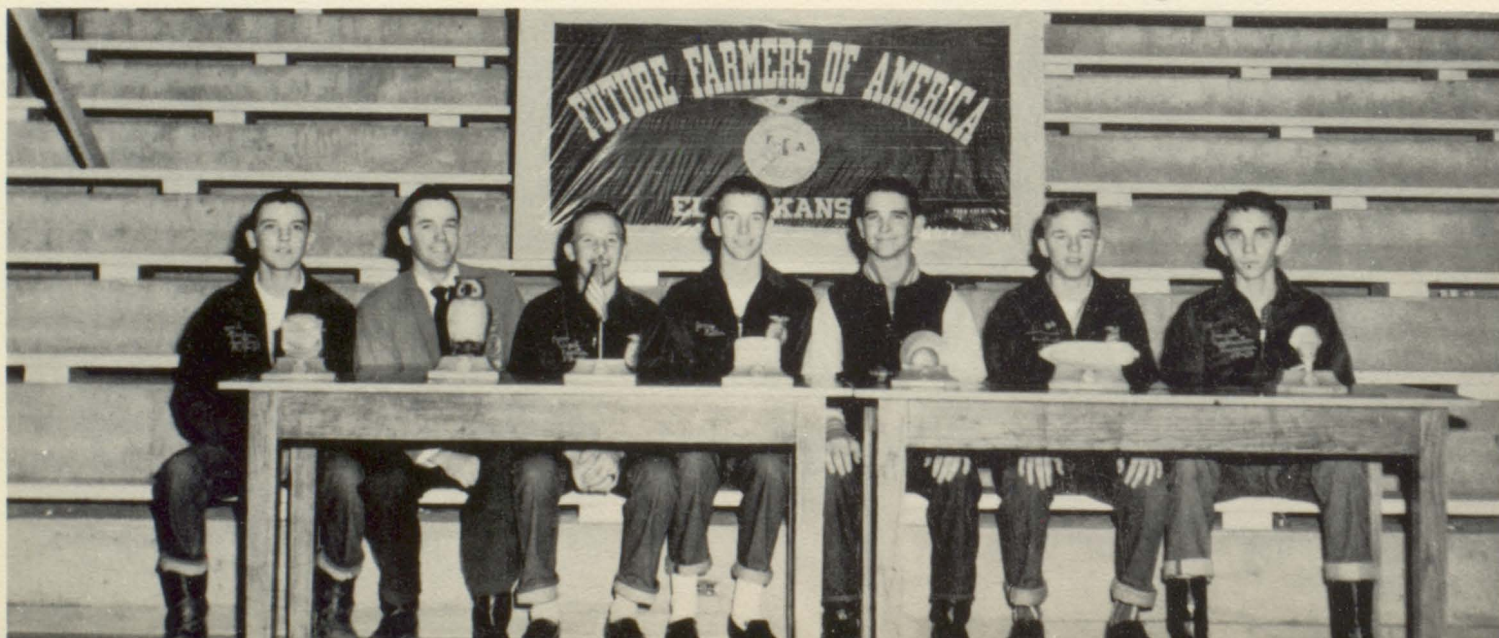
## *Future Farmers of America*

### O'LOUGHLIN MOTOR SALES

Buy - Sell - Trade - Service  
All Makes of Cars and Trucks

OFFICERS: David Fischer, Sentinel; Mr. Schneider, Advisor; Orval Weigel, Reporter; Gary Wentling, Vice-President; Henry

Fischer, President; Ernie Honas, Secretary; Darrell Armbruster, Treasurer.







Vickie Romey, Cynthia Young  
Mary Sue Walters, Rita Kisner



Lois Kinderknechet, Linda Hall



Mary Bradshaw, Martha Spring

## *Home Economics*

Charles Weigel

## *Vocational Agriculture*

TEXACO SERVICE STATION

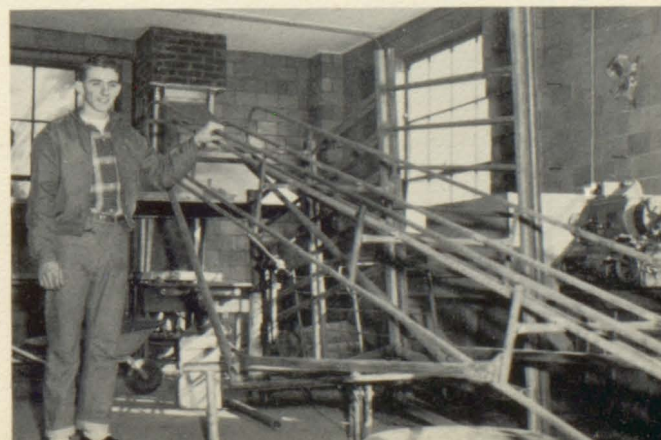


David Fischer



ELLIS PLUMBING  
and  
DEUTSCHER'S HANDY MARKET

Verlin Armbruster







### *Senior Kayettes*

FRONT ROW: Miss Lois Cummings, Sponsor; Janice Pinney, World Service; Joan Erbert, Treasurer; Beverly Schumm, Vice-President; Sondra Smith, President; Julia Schirk, Parliamentary Procedure; Jackie Sue Stebbins, Secretary; Billie Lee Allen, Reg. Programs; Barbara Pfiefer, Point System. SECOND ROW: Zelda Colborg, Piano; Althea Nelson, Special Programs; Jean Zimmerman, Publicity; Carol Weber, Recreation; Rosie Rupp, Representative; Barbara Bittel, Finance; Bonnie Kingsley, School Service; Miss Jane Dunham, Sponsor. THIRD ROW:

Lillian Fisher, Lola Luea, Mary Bradshaw, Shiela Augustine, Marilyn Schoenberger, Mary Jane Lang. FOURTH ROW: Edna Loflin, Carol Mayes, Marlene Dinkel, Dixie Fuller, Mary Louise Romey, Kathleen Windholz, Barbara Douglas, Mary Dorzweiler, Darlene Dinkel. BACK ROW: Sally Fuller, Diane Keller, Carrie Weigel, Donna Luea, Carol King, Carol Baugher, Edna Engel, Pat Niernberger, Martha Spreen. NOT SHOWN: Julie Nucholson, Comm. Service, Diana Luea, Teresa Vine, Susan Scott, Patty Pfiefer, Viola Kutina, Lois Kinderknecht, Sharon Henderson, Linda Hall, Joyce Deutscher, Gladys Augustine, Nora Wiesner.

### *Junior Kayettes*

FRONT ROW: Barbara May, Treasurer; Kathy Homburg, President; Judy Helget, Betty Jo Weaver, Phyllis Gnad, Mary Sue Walters, Beulah Fischer, Margaret Keller, Nancy Bray, Representative; Rita Kisner, Mrs. Long, Sponsor. SECOND ROW: Carol Lorimor, Claudia Deutscher, Martha Beals, Judy Dorzweiler, Juanita Roth, Anita Franta, Ellen Armbrister, Ann Nelson, Vice-President; Barbara Vine, Mary Ann Mayes, Vickey Romey, Cynthia Young. THIRD

ROW: Kay Reeves, Sandy Warta, Linda Gurtler, Sandy Fuller, Gay Person, Brenda Dirks, Peggy Douglas, Carol Huber, Peggy Blackburn, Mary Ann Dinkel, Barbara Brown. LAST ROW: Phyllis Johnson, Elaine King, Olivia Snider, Cheryl Simming, Sherry Olmstead, Rose Ann Lang, Shirley Weber, Jean Storm, Ann Kohl, Joy Kellogg, Secretary; Cynthia Bittel, Gloria Helget. NOT SHOWN: Carol Wiesner, Margaret Honas, Jeannie Riffel.







BACK ROW: Skipper Mattison, John Armbruster, Jimmy Shirck, Edwin Dorzweiler. THIRD ROW: Douglas Balcombe, Richard Robertson, Terry Schoenthaler, Harold Armbrister, Richard Roberts, Dickie Battin, Ronald Miller, Steve Roper. SECOND ROW: David Schoech, Layne Anderson, Allaire Homburg, Dick Ridgway,

Richard Walschmidt, Dennis Wolf, David Hays, Gary Miller. FRONT ROW: Harold Schmidt, Philip Nicholson, President; Billy Seibel, Secretary; Larry Mallory, Vice-President; Bruce Feldkamp, Treasurer; Jack Balcombe, Mr. Stansbury, Sponsor.

## *Junior Kays*

STANDARD SERVICE STATION AND GOLDEN BELT SAVINGS AND LOAN

## *Kays*

BACK ROW: Gary Gerber, Ricky Brown, Gary Augustine, David Kingsley, Leroy Jacobs, Earl Alloway, Kenny Deutscher, Dennis Boos, Gary Wentling, Barry Dubach, Daniel Geschwentner. THIRD ROW: Gerald Ptashek, Dennis Kinderknecht, Dean Denning, Garnis Hagen, Ernie Honas, Wayne Blackburn, Norman Dreher, Gary Kroger, Robert Weber, Dick Schuster, Buster Merritt. SECOND

ROW: Mr. Hipkins, Sponsor; Donald Augustine, Mac Reed, Steve Wolf, Gilbert Brungardt, Bud Campbell, Secretary; Jim Aust, Kenny Haas, Darrel Armbrister, Joe Riedel, Dwayne Ashbaugh. FRONT ROW: David Hurt, Vice-President; Leroy Gnad, President; Bill Honas, Treasurer.







Queen Althea Nelson and her attendants, Zelda Colborg, left, and Joan Erbert.

## Homecoming



A Halloween Homecoming was planned for E.H.S. this year beginning the festivities with a parade at 3 o'clock that afternoon, and climaxing it with an Ellis Railroader - Hill City Ringneck football game that evening. This Mid-Continent League game proved to be quite a thriller as the Railroaders came through with a 24-7 victory.

Riding a horse, and carrying the American Flag, was David Fischer leading a parade of floats made by classes, various school organizations, and cars from down-town dealers. The Student Council awarded a first prize of \$10 to the Junior Class for displaying the best float. Second prize of \$5 went to the Sophomore Class, and a third prize of \$3 went to the Junior High.

Along with all the other seasonal decorating, the Pep Club white-washed the streets and sidewalks with VICTORY slogans.

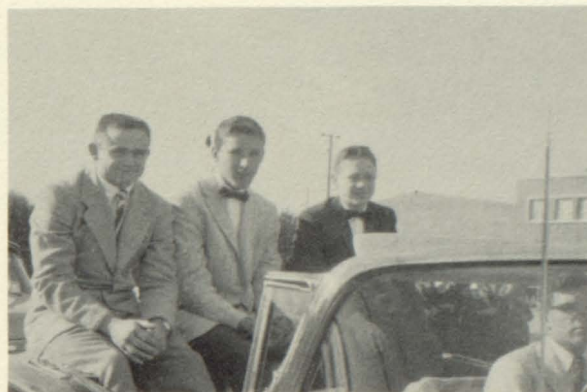
Sponsored By

NELSON'S FOOD MARKET  
MAX THE CLEANER  
ELLIS FLOWER AND GIFT





PARADE OF CANDIDATES



Her Majesty, Althea Nelson, was crowned by King Joe Riedel, in a pre-game ceremony at 7:45 that evening, announcing for the first time, the queen chosen by the football squad. The attendants were: Zelda Colborg and Gilbert Brungardt; Joan Erbert and Kenny Haas.

The flower-bearers, chosen by a Student Council committee, were Jimmy Bray, son of Mr. and Mrs. George Bray, and Elonda Renee' Hipkins, daughter of Mr. and Mrs. LeRoy Hipkins.

The snappy, Orange and Black Band prepared a special program in honor of the queen. The marching 50 formed a heart and played the traditional number, "Let Me Call You Sweetheart." The band provided a special halftime show which was enjoyed by everyone.

After the game, a Homecoming dance was sponsored by the Junior Class.



FLOWERBEARERS ELONDA AND JIMMY



Sponsored By

HAROLD'S MENS' WEAR  
SEIBEL'S STORE



## Junior-Senior Prom 1958



"I COULD HAVE DANCED ALL NIGHT"

A flashing neon sign, "The Flamingo," announced the theme for the 1958 Junior-Senior Banquet and Prom. Waiters met the guests at the door and seated them at quartet tables. The evening menu included baked ham with spiced peaches, scalloped potatoes, corn, jello salad, hot rolls and butter with ice cream for dessert.

Following the banquet a program was given by the servers. The music included "The Flamingo," "26 Miles" and "Sentimental Reasons." The evening was climaxed by a Prom with music furnished by Dave Emery and the Starlighters.

The room was decorated in pink and black with a swamp scene on the stage.



STAG LINE

PUNCH TABLE







DAVE EMERY AND THE STARLIGHTERS



"26 MILES"



"SENTIMENTAL REASONS"

SERVERS AND WAITERS







Isn't it wonderful!



Looks interesting!



It is I, Septimus Jepson!



Watch out!



Annie Oakley?



Ah! Drinking again, Leroy.



I Pocanti, come to warn you!



Charles Atlas!



Goochy Goochy Goo!

WEISNER'S GROCERY

Junior Class '59 Presents GHOST ROAD

KELLER FURNITURE

CAST

Matt Walters	Buster Merritt	Manuel Lopez	Gary Kroeger
Millie Berry	Shiela Augustine	Lolita	Sondra Smith
Cleo Patra	Jean Zimmerman	Pocanti	Althea Nelson
Elmer Berry	Frances Meserve	Old Bones	Leroy Gnad
Bessie Berry	Carol Weber	Petunia Potter	Janice Pinney
Student Director--		Dennis Kinderknecht	





"Prosecutor"



"Guilty"

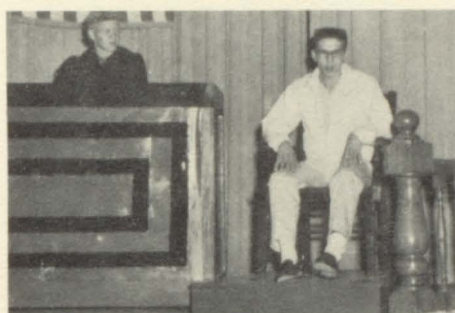


"Courting"



"Interested"

Langley's Sunbeam Bread



"Delinquent"



"Investigator"



"Insistent"

Hays Music Co.



### Senior Play "You The Jury"

Allan Woodward, B. Merritt; Edith Scott, J. Zimmerman; Miss Carver, J. Pinney; Clerk of Court, S. Wolf; Court Stenographer, S. Smith; Bailiff, B. Weber; Barbara Scott, A. Nelson; Mrs. Lake, B. Groff; Judge Tomas Findlay, L. Gnad; Robert McPherson, F. Meserve; Lewis Rennie, G. Kroeger; Gwendolyn Kelton, C. Weber; Sheila Vencent, Z. Colborg; Janice Scott, S. Augustine; Jimmy Perry, D. Schuster.





## Senior Kayettes "Little Star"

Everyday you are assuming more and more responsibility in making decisions regarding your life. You are receiving help in making these decisions from loving parents and teachers who are very much interested in your welfare. Soon you will be out of school and entering into the business, professional, and agricultural fields.

To be SAFE in your undertakings you will need INSURANCE of many kinds. REMEMBER when you need insurance to check with an Independent Insurance Agent who lives in your home community and who is interested in seeing that you always get a square deal.



The Nicholson-Zerfas Insurance Agency  
can take care of all your insurance needs.  
**NICHOLSON-ZERFAS INSURANCE AGENCY**  
Ellis State Bank Building  
Ellis, Kansas



## Junior Kayettes "Young Love"

**SCHNEIDER'S**  
**AUTOMATIC LAUNDRY**

Wash and Dry  
Ellis, Kansas



Let us help you get all your wash done in the regular time of one lead by using several machines and follow it with a warm, indoor trip to an all-weather clothes dryer.





# Sports 59





DEFENSIVE TEAM: Robert Weber, L.E.; Gary Wentling, L.T.; Joe Riedel, L.G.; Henry Fischer, R.G.; Norman Dreher, R.T.;

William Honas, R.E.; Gilbert Brungardt, L.Lb.; Harold Weber, C. Lb.; Grant Merritt, R.Lb.; Leroy Gnad, L.S.; Richard Schuster, R.S.



BACK ROW: Allaire Homburg, Robert Schmidt, Gary Gerber, Richard Waldschmidt, Philip Nicholson, David Schoech, Jack Balcombe. THIRD ROW: Richard Brown, Ernest Honas, Bonaventure Brungardt, Ralph Burns, David Kingsley, Gary Augustine, Norman Rupp, Francis Augustine, Ronald Bradshaw, Ray Pinney. SECOND ROW: Wayne Blackburn, Gilbert Brungardt, Norman Dreher, Robert

Weber, Joe Riedel, Henry Fischer, Francis Meserve, David Erbert, Emmett Fuller, Daniel Geschwentner, Robert Kohlrus. FRONT ROW: David Fischer, Grant Merritt, LeRoy Gnad, Richard Schuster, Dwayne Ashbaugh, Harold Weber, Gary Wentling, William Honas, Darrell Moore, Kenneth Haas.

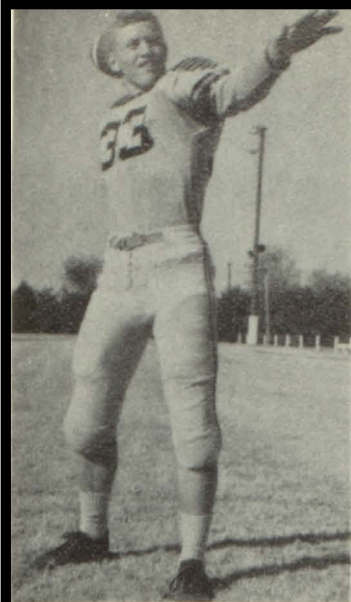
## *Football Team of 1958*

OFFENSIVE TEAM: William Honas, L.E.; Norman Dreher, L.T.; Robert Weber, L.G.; Harold Weber, C.; Henry Fischer, R.G.;

Joe Riedel, R.T.; Gary Wentling, R.E.; Leroy Gnad, Q.B.; Buster Merritt, L.H.; Gilbert Brungardt, F.B.; Richard Schuster, R.H.







LEROY GNAD  
Quarterback



RICHARD SCHUSTER  
Halfback



KENNETH HAAS  
Quarterback

## *Senior Lettermen*



FRANCIS MESERVE  
Tackle



ROBERT WEBER  
Guard



HENRY FISCHER  
Guard



JOE REIDEL  
Tackle

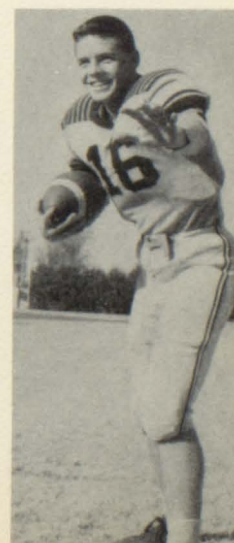


NORMAN DREHER  
Tackle

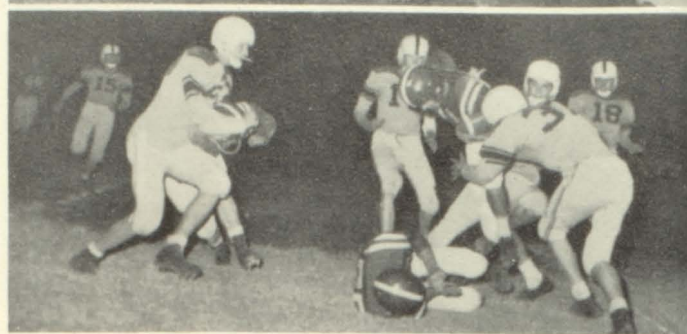
GILBERT BRUNGARDT  
Fullback



BUSTER MERRITT  
Halfback







The Ellis Railroaders have posted a respectable record the past year with 3 wins, 3 losses, and 2 ties.

The strong teams in the league this year were Phillipsburg and Wakeeney.

The Ellis Railroaders fought off a tough Wakeeney club and nearly pulled one of the biggest upsets in the state. The Railroaders were the only team which scored more than one touchdown against the Golden Eagles as they went down in a 20-24 defeat.

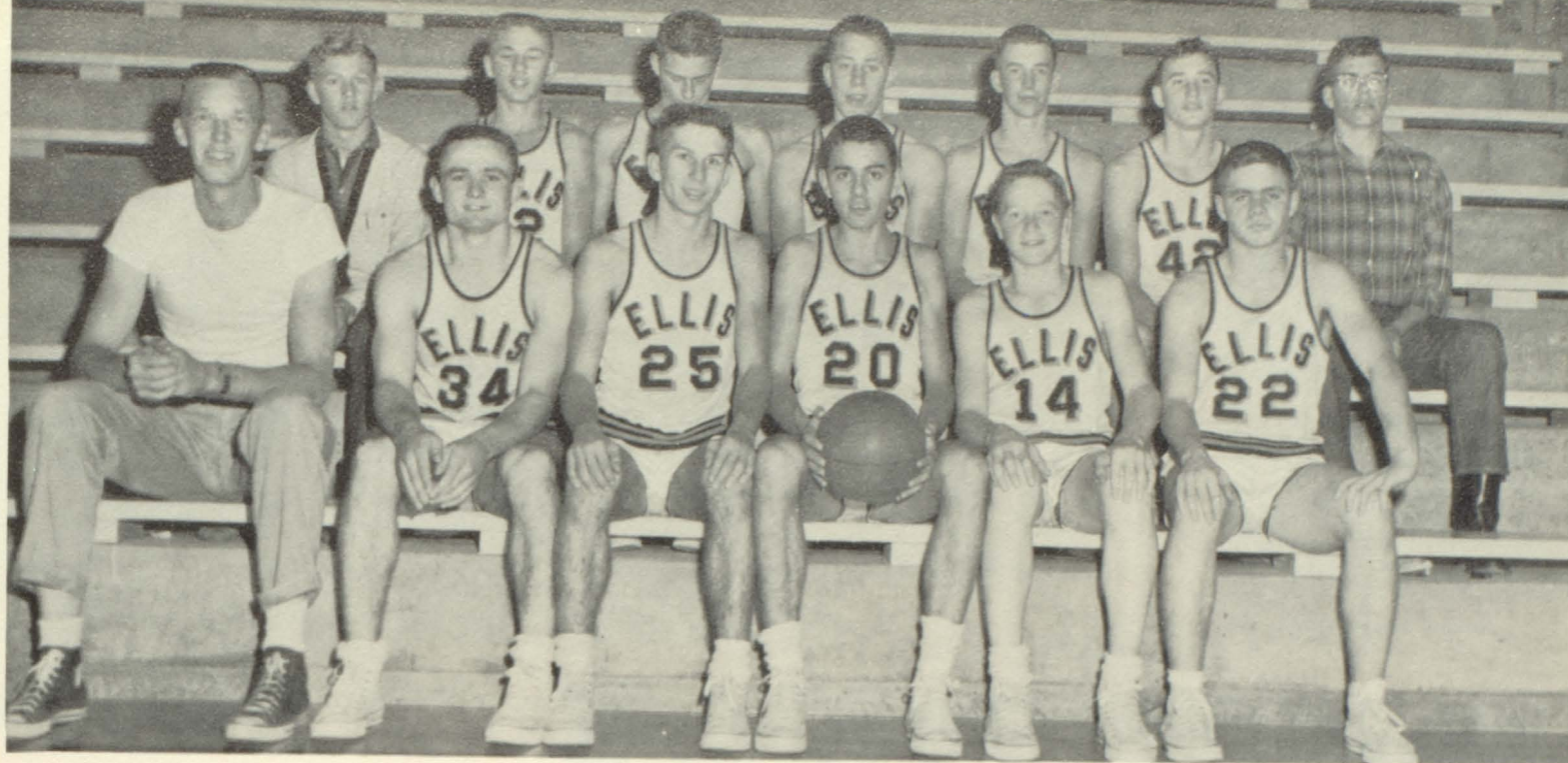
The top three teams in the Mid Continent League this year were: Wakeeney, first; Phillipsburg, second; and the Ellis Railroaders, third.

#### ELLIS RAILROADERS FOOTBALL GAMES

September 19	Ellis	0	Lacrosse	6
26	Ellis	19	Palco	13
October 3	Ellis	6	P-burg	34
10	Ellis	12	Plainville	12
17	Ellis	6	Victoria	6
24	Ellis	27	Stockton	0
31	Ellis	24	Hill City	7
November 11	Ellis	20	Wakeeney	24







BACK ROW: Left to Right; Leroy Gnad, Ernie Honas, Wayne Blackburn, Harry Weber, Gary Wentling, Willy Honas, Ray Pinney.

FRONT ROW: Left to Right; Mr. Lew Hitch, Gib Brungardt, Richard Schuster, David Hurt, Kenny Haas, Buster Merritt.

## *A - Squad*

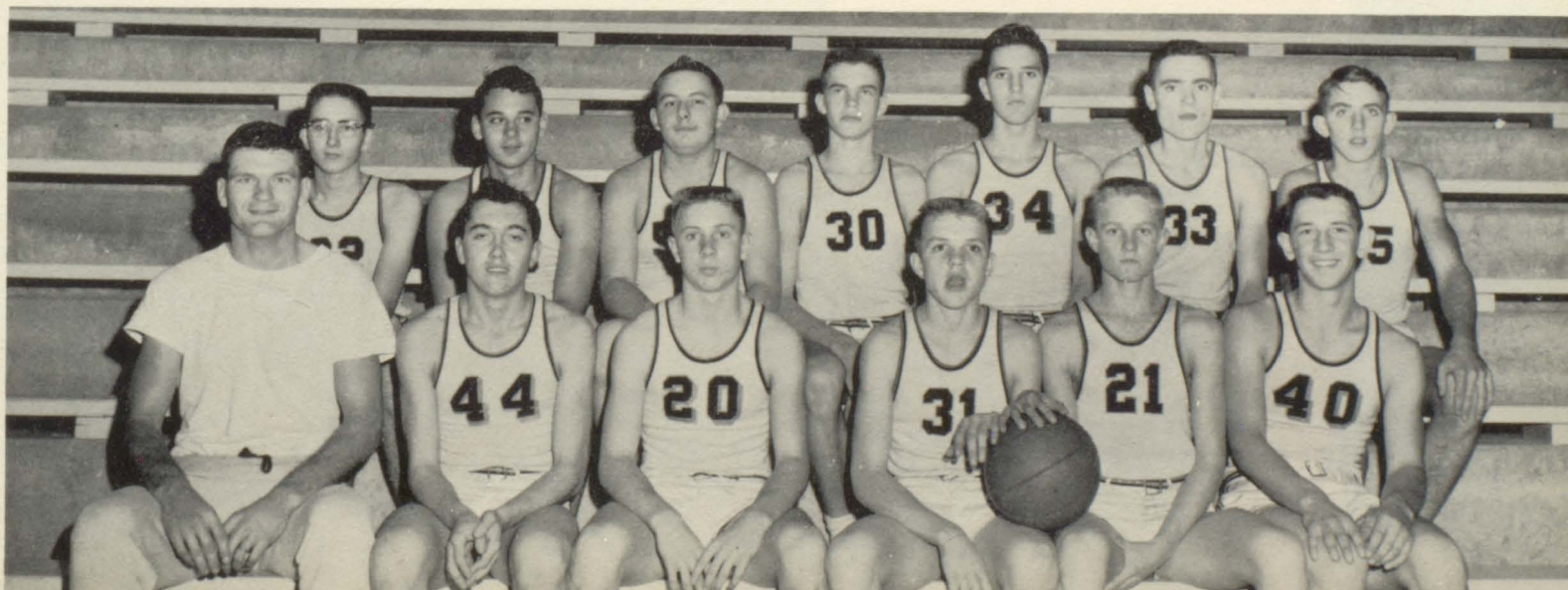
Sponsored by

ALLOWAY BODY SHOP AND GABEL'S BARBER SHOP

## *B - Squad*

BACK ROW: Left to Right; Barry Dubach, Francis Augustine, Kenny Hladek, Richard Brown, Jim Aust, Bud Campbell, Verlin Armbrister.

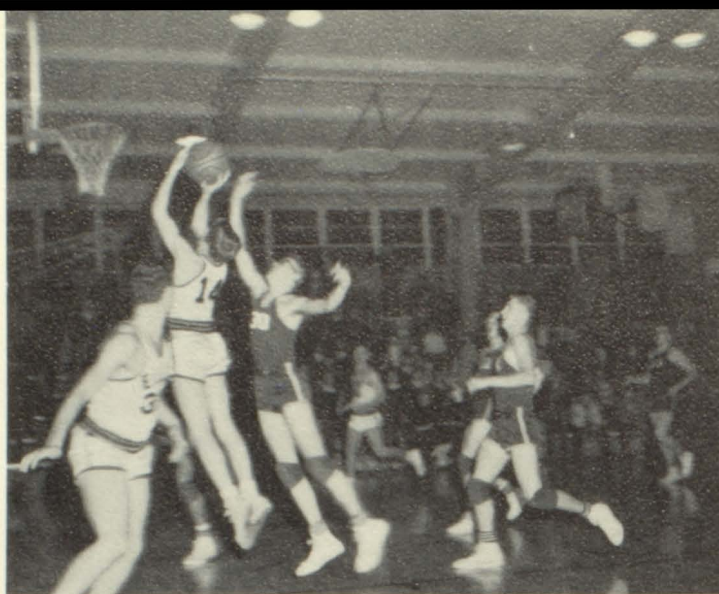
FRONT ROW: Mr. Cliff Stansbury, Daniel Geschwentner, David Kingsley, Dwayne Ashbaugh, Gary Gerber, Robert Kohlrus.







Kenny Haas



David Hurt

Sponsored by

KESSLER CLEANING CO.



*S  
E  
N  
I  
O  
R*



Gib Brungardt

*L  
E  
T  
T  
E  
R  
M  
E  
N*



Dick Schuster

Buster Merritt







## *Freshmen*

BACK ROW: Mr. Martin, Coach; Jimmy Shirck, Larry Mallory, Verlin Schuster, Steve Roper, Dennis Wolf.  
FRONT ROW: Dick Battin, Richard Roberts, Ronald Miller, Bill Seibel, Skipper Mattison, John Armbruster.

DISNEY SERVICE STATION

## *Seventh Grade*



## CENTRAL POWER CO.

BACK ROW: Mr. Hitch, Coach; Jack Balcombe, Phil Nicholson, Gary Miller, David Hays. MIDDLE ROW: Jerry Keller, Ronald Armbruster, Alvin Armbruster, Emmett Fuller, Robert Schmidt. BOTTOM ROW: Edwin Dorzweiler, Bob Bradshaw, Alfred Bollig, Layne Anderson, Bruce Feldkamp.

## *Eighth Grade*



### 7th GRADE TEAM

BACK ROW: Donald Bennett, Richard Fries, Douglas Balcombe, Terry Schoenthaler, Dick Weatherholt, Douglas Young. FRONT ROW: Mr. Martin, Coach; William Armbruster, Steve Deutscher, Richard Robertson, Paul Armbruster, Douglas Hurt, Leon May.





DISTANCE: Ronald Hubbs, David Hubbs, David Erbert, Richard Schuster, Robert Weber, Larry Ptaschek, Steve Wolf.

## MARIES SNACK SHOP



JAVELIN: Bill Honas, Terry Mixer, Dennis Kinderknecht, Emmett Fuller, Danial Geschwentner, Steve Wolf.

HURDLERS: Gary Augustine, Dwayne Ashbaugh, Gary Wentling, Larry Ptaschek, Ricky Brown, Ernie Honas, Leroy Jacobs, Norman Rupp.



POLE VAULT: Richard Weber

## Track



HIGH JUMP AND BROAD JUMP: Ricky Brown, Bud Campbell, Gary Wentling, Joe Riedel, Gary Gerber, Gib Brungardt.



SHOT PUT AND DISCUS: Sonny Brungardt, Emmett Fuller, Robert Kolhrus, Gib Brungardt, Kenny Hladek, Ray Pinney, Francis Augustine, Earl Alloway.

## GESCHWENTNER JEWELRY



DISTANCE: Wayne Blackburn, Ray Pinney, Dean Denning, David Erbert.

DASH MEN: Wayne Blackburn, Gary Gerber, Bud Campbell, Robert Kolhrus, Joe Riedel, Daniel Geschwentner.





# *Annuals of Distinction*

FOR OVER TWENTY YEARS



HIGH SCHOOL  
COLLEGE  
UNIVERSITY  
ANNUALS

*artistically created  
by master craftsmen*

*Walsworth*

PUBLISHING COMPANY

MARCELINE, MO.



