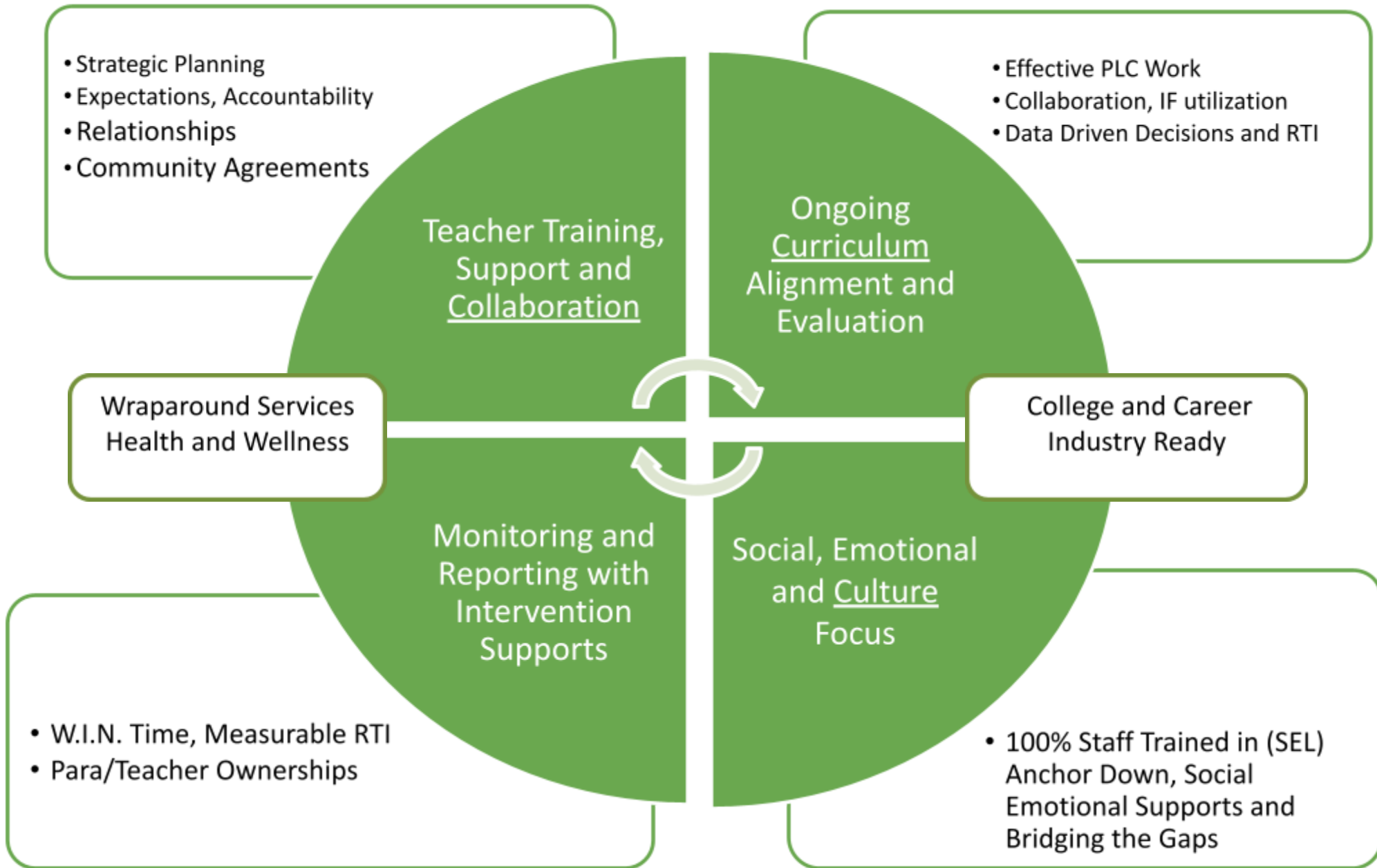


# Strategic Plan, Annual Report



Greenland School District

2022-2023

# Strategic Plan, Annual Report

## Acknowledging Needs Children Have On Repeat

### Greenland Elementary

#### Culture-Plan addresses

- Implementing "Anchor Down"
  - Social Contract dictates communication, teacher/student interactions, peer/peer interactions, discipline, and all other aspects of school.
  - All employees trained district wide.
- Social Emotional Learning
  - Mind UP-SEL Curriculum-being implemented during the school day.
  - All GES staff trained.
  - Created by Goldie Hawn- "helps kids learn how to self regulate their emotions, become more resilient and learn about how their brain works to give them a road map out of despair into a more positive mindset."
- Implement procedures from Restorative Practices/PBIS "Positive Behavioral Interventions and Support"

#### Collaboration-Plan addresses

- Continued work/support with PLC's.
- Both Para's and Teachers have a daily common planning time in their schedule.
- Teachers will not be departmentalized. Grade level teachers will be teaching all subjects using the same curriculum.
  - Strengthens PLC
- Teachers and Para's will be using common screeners and tests to gather data.
  - Strengthens PLC and student achievement.

#### Curriculum-Plan addresses

- All grades will be using:
  - Wit and Wisdom(Reading and Writing)
  - Illustrative Math (Math)
  - 95% Group Phonics Lesson Library core curriculum and Science of Reading Techniques for Word Study
    - IE- Phonological Awareness, Phonics Decoding, and Encoding
- All curricula blocks have a W.I.N. or RTI time worked in.
  - Tier 2 Small Groups(RTI/W.I.N. Time)
    - Grade Level groups built based on data and during PLC's
    - Para and teachers will be running centers based on the needs of students.
    - Very little pullouts for Tier 2
- Tier 3
  - Determined by data gathered from screeners-Groups planned during PLC
  - SPIRE-Dyslexia
  - Bridges-Math
  - Individual pullouts

### 2022-2023 Middle School Improvement Plan:

Science: Both 7th & 8th grade are classified as "in need of support".

#### Action:

- Will implement a new science program "Open Sci. Ed."
- Training teachers with specialists from the NorthWestArkansas Educational Service Cooperative.
- Developing Lessons and activities as a vertical team along with the specialist for the NWA Educational cooperative.
- Professional development- outside sources for the program.
- Engage students with more hands-on activities.
- Vertical alignment : Professional Learning Communities 6-8 throughout the school year 2022-23.

#### English Language Arts & Mathematics:

- Continue the work for the previous year; Vertical Alignment and Grade level Professional Learning communities.
- Teachers will continue to show various strategies reflective in the area of Science Of Reading (initiative by the State of Education department).
- Use various assessments to implement strategic interventions.
- Continue the use of curriculum that has been put into place: Wit & Wisdom & Illustrative Math.
- Programs that will assist teachers and paraprofessionals to aid interventions of levels Tier I & Tier II. (Math Quest, Bridges, Aleks, Lexia and Zearn).

#### Parallel Teaching:

Actions: Special Education teachers will be pushed into classes to help assist students become more successful with core subjects of Math, Reading, English, and Science.

- Special Education teachers will attend at least 4 Professional Learning Communities meetings in grades 5-8 each month.
- Have input in developing lesson plans and assessments in each grade (5-8).
- Work with some groups that contain both Special Education and general education students.

#### Introduce New Culture Change and mindset (SEL)

##### Actions: "Anchor Down"

- Implement classroom agreements, with student input.
- Use the 4 essential questions:
  - 1) What are you doing?
  - 2) What are you supposed to be doing?
  - 3) Are you doing it?
  - 4) What are you going to do about it?
- Provide Professional Development for teachers: summer and throughout the school year.
- Engage Students; Teacher/student, student/students relationships.

### 2022/2023 Greenland High School Improvement Plan Story

In order to respond to students in need of support in mathematics, our building goal for Math involves

- Implementing Illustrative Math—a problem based core curriculum
- Enacting targeted interventions throughout the school day/week
- Assigning targeted students to math classes that have 2 periods in the day with one relying on instruction and the other as a hands-on math lab-like class for those in need of support
- Utilizing built in common planning time for mathematics teachers to analyze data and plan for instruction which further fosters out Professional Learning Communities (PLC)
- Training staff and teachers on our usage of the program ALEKS

Throughout the year, teachers will take their data from classroom assessments and student performance in ALEKS to create goals of growth for students.

In order to respond to students in need of support in reading, our school level building goal is based on

- Establishing time for Lexia assessment and interventions
- Continuing to implement an intensive curriculum that builds essential knowledge, skills and academic habits through in class reading, discussion, and writing.
- Using Vocabulary from Classical Roots to teach students to build definitions based on what a word looks like and not relying on a dictionary to navigate a text
- Tiered interventions scheduled during the day/week based on student performance on daily formal and informal assessments
- Using proven methods of interventions(SPIRE/Pre-reading strategies)
- The English classes are also employing the Whooo's Reading program to not only reward students for reading as it uses a point system which encourages them to read, but also assesses and rewards them on their ability to think critically on their chosen books and stories.

The English PLC will meet at regular intervals to evaluate student progress based on the data from Lexia and classroom assessments in order to create pathways of growth for all students based on their performance and needs.

For the safety of our students and staff, our safety goal for the 22/23 school year is based on our

- Continued 100% of coverage on campus by law enforcement through the Greenland School District Police Department as we utilize one full time officer and one part time officer that guarantees this coverage.
- Building student relationships with Officer Underwood through his interactions in class and between classes to build trust with law enforcement
- Installing key fobs and instituting an all doors locked policy for school safety
- Employing active shooter drills and training to give teachers strategies, guidance and a plan for surviving an active shooter event and give educators the opportunity to identify potential problem areas while also feeling better prepared in our current nationwide climate

# Strategic Plan, Annual Report

## 2021-22 ACT Aspire

