



OREGON AT-A-GLANCE SCHOOL PROFILE

Central Elementary School

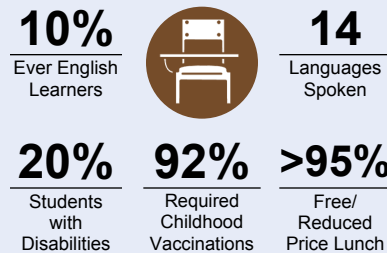
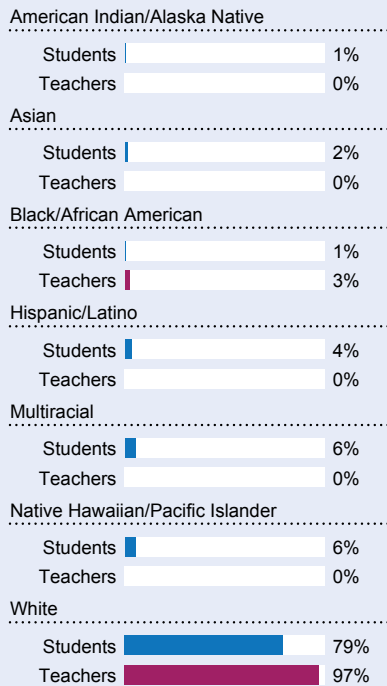
PRINCIPAL: Monica West | GRADES: K-5 | 701 H Ave, La Grande 97850 | 541-663-3500



Students We Serve



DEMOGRAPHICS

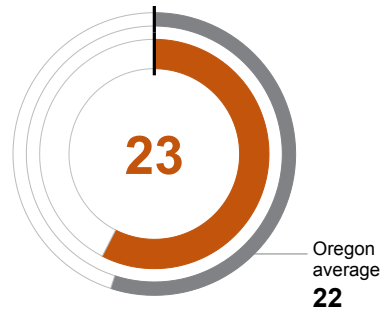


*<10 students or data unavailable

School Environment

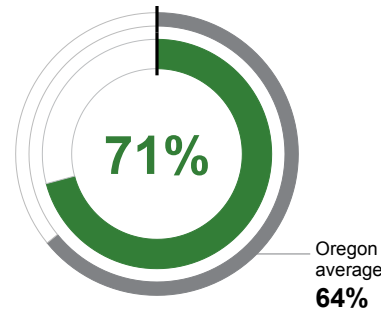
CLASS SIZE

Median class size.



REGULAR ATTENDERS

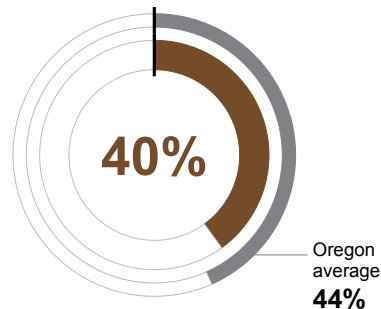
Students who attended more than 90% of their enrolled school days.



Academic Success

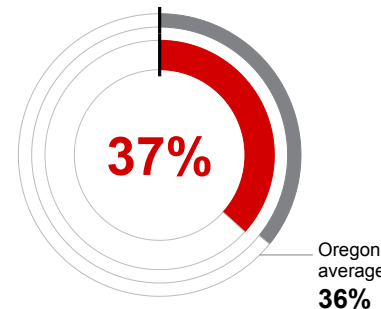
ENGLISH LANGUAGE ARTS

Students meeting state grade-level expectations.



MATHEMATICS

Students meeting state grade-level expectations.



Academic Progress

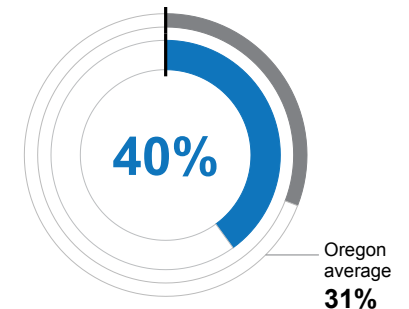
INDIVIDUAL STUDENT PROGRESS

Year-to-year progress in English language arts and mathematics.

Data not available in 2021-22

SCIENCE

Students meeting state grade-level expectations.



School Goals

Central Elementary provides quality instruction in ELA, Math, and Science while providing trauma informed instruction to support the Social Emotional Learning of our students. We continue to use Positive Behaviors Interventions and Supports as part of our SEL curriculum. We are focused on working with parents to monitor homework, read 20 minutes a day with your child, and stay in regular contact with their teacher.

State Goals

The Oregon Department of Education is partnering with school districts and local communities to ensure a 90% on-time, four year graduation rate by 2025. To progress toward this goal, the state will prioritize efforts to improve attendance, provide a well-rounded education, invest in implementing culturally responsive practices, and promote continuous improvement to close opportunity and achievement gaps for historically and currently underserved students.

Safe & Welcoming Environment

Central Elementary promotes a safe and welcoming environment through- Title 1 Family Night School Counselor School Resource Officer BEST curriculum for 5th grade Trauma Informed Instruction Positive Family communication We want to support all learners so they feel safe and are ready to learn in the classroom.



Outcomes

Our Staff (rounded FTE)



26
Teachers



13
Educational assistants



1
Counselors/
Psychologists



83%
Average teacher retention rate



73%
% of licensed teachers with more than 3 years of experience



No
Same principal in the last 3 years

REGULAR ATTENDERS

American Indian/Alaska Native	<10 students or data unavailable
Asian	<10 students or data unavailable
Black/African American	<10 students or data unavailable
Hispanic/Latino	59%
Multiracial	60%
Native Hawaiian/Pacific Islander	48%
White	73%
Free/Reduced Price Lunch	71%
Ever English Learner	49%
Students with Disabilities	71%
Migrant	<10 students or data unavailable
Homeless	<10 students or data unavailable
Students in Foster Care	<10 students or data unavailable
Talented and Gifted	<10 students or data unavailable
Female	65%
Male	76%
Non-Binary	<10 students or data unavailable

ENGLISH LANGUAGE ARTS

<10 students or data unavailable
<10 students or data unavailable
<10 students or data unavailable
<10 students or data unavailable
18%
8%
43%
40%
19%
22%
<10 students or data unavailable
<10 students or data unavailable
<10 students or data unavailable
<10 students or data unavailable
<10 students or data unavailable
<10 students or data unavailable
38%
42%
<10 students or data unavailable

MATHEMATICS

<10 students or data unavailable
<10 students or data unavailable
<10 students or data unavailable
<10 students or data unavailable
27%
8%
40%
37%
19%
13%
<10 students or data unavailable
<10 students or data unavailable
<10 students or data unavailable
<10 students or data unavailable
<10 students or data unavailable
<10 students or data unavailable
35%
39%
<10 students or data unavailable

About Our School

BULLYING, HARASSMENT, AND SAFETY POLICIES

At Central Elementary we strive to help students navigate peer conflicts and unsafe behaviors through conscious discipline while following board policy. We encourage safe choices and positive peer relationship through regular character education instruction. We are working to understand the impact of trauma on students and provide strategies and environments that will help meet the needs of our impacted students.

EXTRACURRICULAR ACTIVITIES

Central Elementary promotes activity outside the classroom through:
Volleyball
Basketball
Fiddle Club
SoleKIDS
Robotics
Kids in the Kitchen
Outdoor Sensory Classroom
Many Academic Fairs/Activities

PARENT ENGAGEMENT

We highly encourage families to engage with Central Elementary staff to make their student have the best experience possible. We continue to engage parent through:
School-wide Title Night
Central Elementary PTO
Meet Your Teacher night
Conscious Discipline classes for Parents
Thrillshare notifications-text and website
The Cougar Minute

COMMUNITY ENGAGEMENT

Central Elementary School recognizes the great community we have and their desire to support our students. Our sports program and field trips would not be possible without community support. We have donors that help support students that struggle with homelessness, hunger, and have other challenges. We continue to find ways to engage the community through our website, Thrillshare notifications, The Cougar Minute, etc. Staff welcome our community to attend events at Central Elementary and experience the great things our staff and students are doing.