

# Palmyra R-1 School District Safe Return to In-Person Instruction and Continuity of Services Plan 2021-2022\*

[Missouri School Reopening and Operating Guidance](#)

[Most current COVID cases \(Missouri\)](#)

**The mission of the Palmyra R-1 School District is to recognize individual students needs and provide the means for every student to reach his/her highest potential remains unchanged and this promise will continue through every season.**

The 2020-2021 school year was challenging for everyone. Through all our challenges we were able to return to school on time and meet every day for the entire school year (except for those 9 straight days of winter weather in February). As we prepare for the 2021-2022 school year, DESE is requiring school districts to develop a new "Safe Return to In-Person and Continuity of Services Plan (SRCSP)" in order to receive federal Elementary and Secondary School Emergency Relief Fund (ESSER) funds associated with the American Rescue Act of 2021. As this document is written the COVID-19 pandemic continues to impact people throughout the world, as well as our nation, state, community, and in some cases our own families.

The Palmyra R-1 School District plans to return every day for in-person learning once again this school year. As you know the COVID-19 pandemic response continues to be very challenging for everyone and our primary goal upon returning to school is the health and safety of our students and staff while maintaining high academic standards. This Back-to-School Plan is intended to organize the school district's efforts to maintain safe learning and working environments in all of our buildings and transportation services until the COVID-19 pandemic has ended. This plan includes mitigation strategies to reduce the impact of the virus and is designed to assist those who may miss valuable time should he or she be absent from in-person learning for an extended period of time.

The 2021-2022 Back to School Plan will be reviewed and updated to reflect changes as new information is made available through the proper health authorities.

## **Mitigation Strategies**

### **Universal and correct wearing of masks**

The Palmyra R-1 School District will educate students/staff on proper mask wearing. Students and staff will be allowed to wear masks, masks will be highly recommended and/or mandated based on communication with the Health Department and local Board of Education. At this time masks are optional.

### **Physical distancing (e.g., including use of cohorts/podding)**

Students will practice social distancing when needed as outlined in periodic communication with the Marion County Health Department.

### **Hand washing and respiratory etiquette**

Students and Staff will be asked to always practice safe personal hygiene measures. Students and staff will be encouraged to self-monitor and assess each day for COVID like symptoms. If COVID symptoms are evident, the school district requires students and staff to remain at home. Return to school is possible after 24 hours symptom free, unless a positive COVID test is returned. Students and staff who test positive for COVID will be required to isolate and may return to school following proper COVID quarantine protocol.

### **Cleaning and maintaining healthy facilities, including improving ventilation**

The Palmyra R-1 School District will follow CDC guidelines and will collaborate with local cleaning and hygiene vendors to review and improve daily proactive cleaning and internal ventilation.

### **Contact tracing in combination with isolation and quarantine, in collaboration with the State, local, territorial, or Tribal health departments**

The Palmyra R-1 School District will contact trace positive cases and close contacts and provide names and contact information of individuals who are exposed to the health department.

### **Diagnostic and screening testing**

The Palmyra R-1 School District will implement body temperature checks if or when county data reflects need and the district is mandated to screen.

### **Efforts to provide vaccinations to educators, other staff, and students, if eligible**

The Palmyra R-1 School District has and will continue to communicate with staff and students on availability of local vaccination options. Vaccinations are NOT mandated at this time.

## **Appropriate accommodations for children with disabilities with respect to the health and safety policies**

In the event of student absence due to COVID-19 and to accommodate children with disabilities, the Palmyra R-1 School District will provide remote learning through Google Classroom or an equivalent application such as SeeSaw. If electronic participation is limited or unavailable, a hard copy learning packet will be utilized to support continued learning. All efforts during this COVID-19 instructional interruption will respect recommended health and safety policies. Teachers will maintain communication with student via online support, phone calls, email, Zoom meetings, or other communication applications.

Interruptions of in-person instruction due to outbreak will be addressed with full building closure, and grade level, or targeted closure.

## **Nutritional and Health Services will be provided to the greatest extent practicable**

### **Social, Emotional, and Mental Health needs**

Social, emotional, and mental health needs of students and staff are important for academic success. The District will employ efforts and seek resources to continue to provide for these needs whether during in-person instruction, or in the event of an interruption to in-person instruction. Support staff such as counselors, social worker, and community resource specialists will work to do the following:

- create professional development for building staff regarding typical childhood reactions to stress and trauma
- collaborate with teachers on classroom activities to address student mental health upon return to school
- collaborate with community agencies on best practices
- provide classroom lessons on school expectations and structure around health safety and physical distancing practices to help students re-adjust to a full school schedule

### **Review and Revisions**

The SRCSP is required to be revised no less than every six months. The Palmyra R-1 School District will continually review the plan for necessary changes that may be deemed necessary due to changes in guidance and best practices. Plan review team will include Superintendent, Building Principals, District Nurses, Homeless Student Coordinator, Foster Student Coordinator, Special Education Director, and survey results from parents.

## Understandable Language

This plan will be made available in other languages by request.

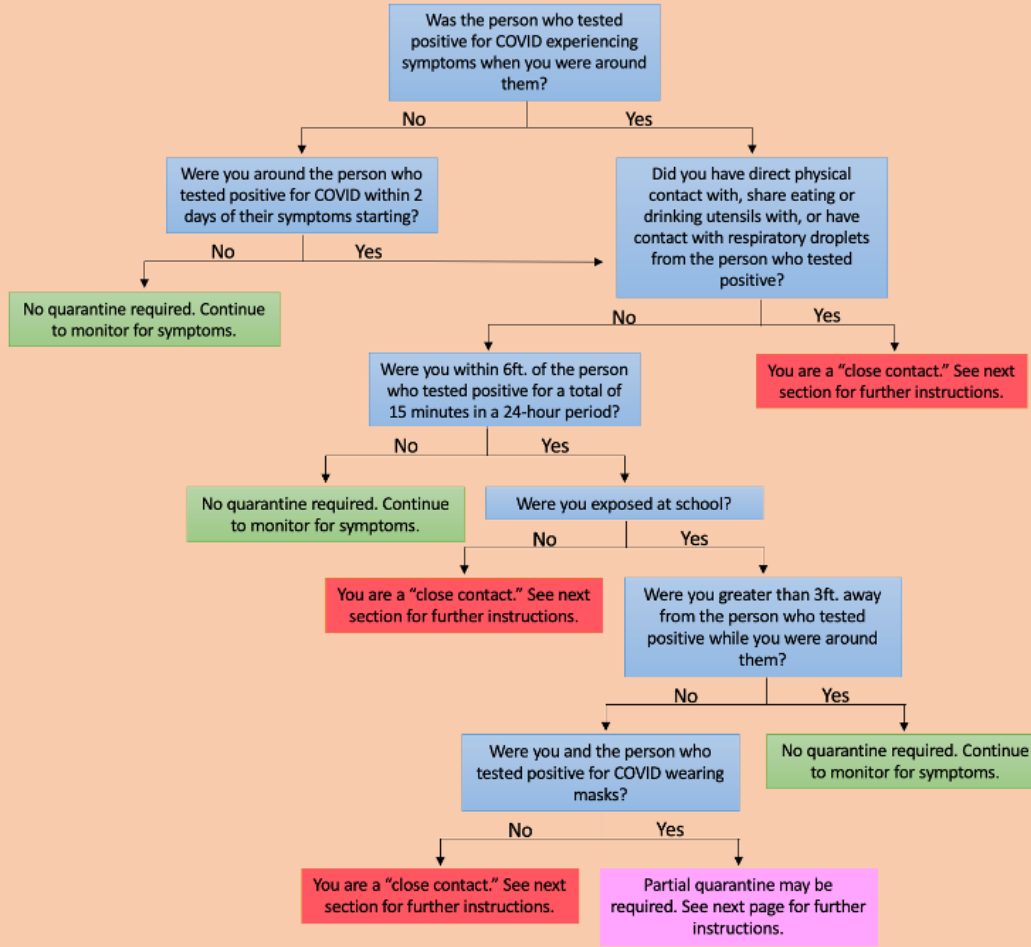
Any part of this plan may change, including any or all accommodations or action plans to ensure the safety of our students and staff.

Other important information related to COVID protocol:

- Palmyra R-1 School district will NOT be offering distance learning at the start of the 2021 Fall semester. In-seat instruction will be in place for ALL students.
- Contact tracing will be in place for all students/staff who have been deemed COVID positive by the local health department.
- Contact tracing will be in place for students/staff within 3 feet for more than 15 minutes of COVID positive individual(s). Remember that masks are optional, but highly recommended. (Revised September 15, 2021) [Please see the flowchart below for quarantine questions.](#)
- Palmyra R-1 School District encourages all families to self-monitor and to stay home if symptoms are suspected. In the event of a positive test result of COVID 19, we ask the family to contact the school.
- If a student is deemed in close contact with a COVID positive case, the Marion County Health Department will communicate quarantine timelines to the family.

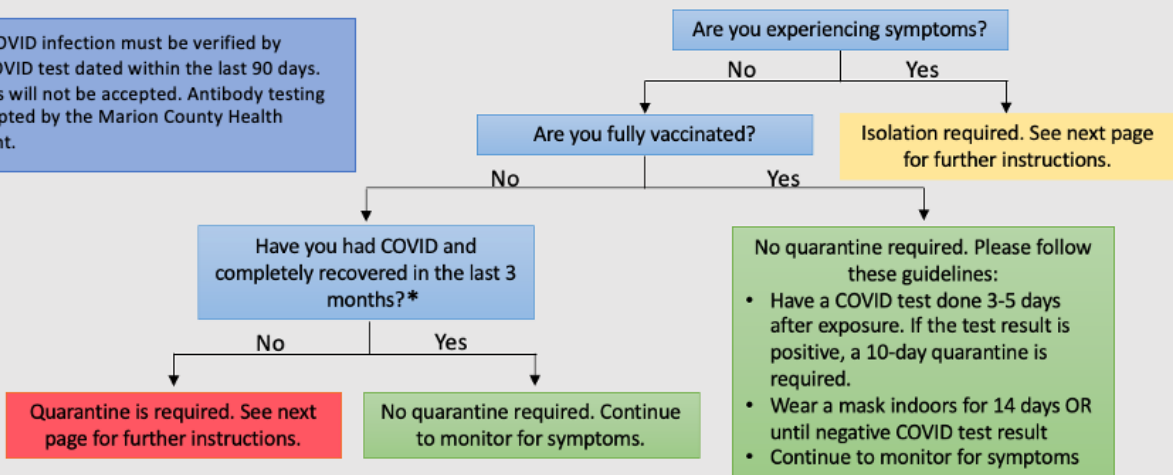
# Guidelines for Identifying Close Contacts

This flowchart is meant to serve as a guide to explain the definition of a “close contact.” The Marion County Health Department will have final authority over the identification of close contacts.



# Guidelines for Identifying Close Contacts that Should Quarantine

\*Recent COVID infection must be verified by positive COVID test dated within the last 90 days. Home tests will not be accepted. Antibody testing is not accepted by the Marion County Health Department.



The following information is meant to serve as a guide for those instructed by the Marion County Health Department to quarantine or isolate. All decisions regarding quarantine and isolation will be made by the Marion County Health Department.

## Quarantine

You have been exposed to COVID and should monitor for symptoms.

How long do I need to quarantine?

- Quarantine will be a total of 14 days from last contact with person who tested positive for COVID.

How do I quarantine?

- Monitor for symptoms for 14 days. Symptoms include fever (temperature of 100.4°F or higher), cough, shortness of breath, new loss of taste or smell, sore throat, nasal congestion, nausea or vomiting, diarrhea, etc. A full list can be found at [www.CDC.gov](http://www.CDC.gov)
- If possible, stay away from people you live with, especially those who are at higher risk for getting sick from COVID.
- If you have symptoms, immediately self-isolate and contact your healthcare provider and/or Palmyra R-1 School District contact tracer/Marion County Health Department.

## Partial Quarantine

You have been exposed to COVID at school and should monitor for symptoms.

Please answer the following questions:

1. Are you experiencing symptoms?
  - a. Yes -> Isolation required. Please see next section for details.
  - b. No -> Continue to next question.
2. Have you had COVID and completely recovered in the last 3 months OR are you fully vaccinated?
  - a. Yes -> No quarantine required.
  - b. No -> Partial quarantine required. See below for instructions.

Per the Missouri Department of Elementary and Secondary Education (DESE) guidelines, you may attend in-person learning while monitoring for symptoms and wearing a mask BUT must quarantine outside of school; attending sports/extracurriculars is NOT permitted. Follow guidelines in the red "Quarantine" box above.

## Isolation

You have tested positive for COVID.

How long do I need to isolate?

- Experiencing symptoms: Isolation will be a total of 10 days after symptoms start. To end isolation, must be fever-free for 24 hours with no fever-reducing medications and symptoms must be improving on day 10. Isolation will be extended past 10 days if conditions not met.
- NOT experiencing symptoms: Isolation will be a total of 10 days after positive COVID test result.

How do I isolate?

- Monitor symptoms. If you have an emergency warning sign (trouble breathing, new confusion, persistent pain or pressure in the chest, etc. A full list can be found at [www.CDC.gov](http://www.CDC.gov)), seek emergency medical care immediately.
- Stay home and attempt to separate from others as much as possible. Stay in a separate room and use a separate bathroom if possible. Do not share household items (cups, utensils, etc.). Wear a mask.