



Emergency Safety Intervention (ESI) Parent Information

If an emergency safety intervention was used with a student, we invite and strongly encourage parents to schedule a meeting to discuss the incident and how to prevent future use of emergency safety interventions. A parent can request and schedule this meeting by going to the back page for the person to contact who will work to schedule this meeting with the required participants. This meeting will be scheduled no later than 10-school days from when the parent makes the request unless the parent cannot meet within that time frame.

USD 246 Northeast

<http://www.usd246.org/>

Dr. Ray Streeter, Superintendent

620-347-4116

rstreeter@usd246.org

Date

Dear parent or guardian of

We are writing to inform you that an emergency safety intervention has been used with your child due to behavior that presented a reasonable and immediate danger of physical harm to your child or others. An emergency safety intervention is the use of seclusion or physical restraint. Details of the incident regarding your child are included in the form attached to this letter.

If this is the first time an emergency safety intervention has been used on your child this school year, also attached are printed copies of the standards for when emergency safety intervention may be used, a flyer on your rights under emergency safety intervention law, information on your right to file a complaint with the local board of education through the local dispute resolution process, information on your right to request administrative review from the Kansas State Board of Education, and information to assist you in navigating these processes. If this is a subsequent incident this school year, then the information is not attached, and you are encouraged to access the information at the website link for local emergency safety intervention resources below.

Please use the form on the following page to provide feedback or comments to the school regarding the incident. You may submit the form to me at any time by delivering it to the school or emailing it to me. We invite and strongly encourage you to schedule a meeting to discuss the incident and how to prevent future use of emergency safety interventions. Please use my email or phone number listed below to schedule an emergency safety intervention meeting.

Local ESI Resources: <http://www.usd246.org/home/schools/parent-info/esi-information>

State ESI Resources: www.ksdetasn.org

Sincerely,

(Signature)

(Printed Name)

(Phone Number)

(Email Address)

Please provide us with feedback or comments regarding the incident. You may attach additional

pages if needed:

Emergency Safety Intervention (ESI) Parent Information

Table of Contents

Standards of When ESI Can Be Used	Page
5	
Parents' Rights Flyer	
Page 7	
Local Dispute Resolution Process	
Page 15	
Local Dispute Resolution Guide for Parents	Page
16	
State Board Administrative Review Process	Page
17	
State Board Administrative Review Guide for Parents	Page
18	
Contact Information	

Standards of When ESI Can Be Used

Revised July 2016

Standards for the use of Emergency Safety Interventions

Emergency safety interventions law sets forth standards for the use of restraint and seclusion to ensure that all Kansas students and staff have a safe learning environment. The standards found in the emergency safety intervention statutes and regulations are required to be followed in all Kansas public school districts and accredited private schools.

An emergency safety intervention is the use of seclusion or physical restraint. The use of an emergency safety intervention shall **cease as soon as the immediate danger of physical harm and violent action ceases to exist**.

Before using an emergency safety intervention, a school employee witnessing the student's behavior must have determined that **less restrictive alternatives** to emergency safety interventions, such as positive behavior interventions support, were inappropriate or ineffective under the circumstances.

An emergency safety intervention shall be used **only when a student presents a reasonable and immediate danger of physical harm to such student or others with the present ability to effect such physical harm**. Violent action that is destructive of property may necessitate the use of an emergency safety intervention if there is a reasonable and immediate danger of physical harm. An emergency safety intervention may not be used for purposes of discipline, punishment, or for the convenience of a school employee.

Physical restraint means bodily force used to substantially limit a student's movement. Physical

restraint is **NOT**:

- _Consensual, solicited or unintentional contact and contact to provide comfort, assistance or instruction;
- _physical escort;
- _prescribed treatments for a student's medical or psychiatric condition by a person appropriately licensed to issue these treatments;
- _protective or stabilizing devices either ordered by an appropriately licensed professional or required by law;
- _any device used by a law enforcement officer in carrying out law enforcement duties; and
- _seatbelts and any other safety equipment when used to secure students during transportation.

Prohibited types of restraints:

- _**Prone**, or face-down, physical restraint;
- _**supine**, or face-up, physical restraint;
- _any physical restraint that **obstructs the airway** of a student;
- _any physical restraint that **impacts a student's primary mode of communication**;
- _**chemical** restraint ("chemical restraint" means the use of medication to control a student's violent physical behavior or restrict a student's freedom of movement.); and
- _**mechanical** restraint ("mechanical restraint" means any device or object used to limit a student's movement).

Seclusion means placement of a student in a location where:

- _The student is placed in an **enclosed area** by school personnel;
- _the student is **purposefully isolated** from adults and peers; and
- _the student is **prevented from leaving**, or the student reasonably believes that such student will be prevented from leaving, the enclosed area.

An emergency safety intervention may not be used with a student if the student is known to have a **medical condition** that could put the student in mental or physical danger as a result of the use of an emergency safety intervention unless not using an emergency safety intervention would result in significant physical harm to the student or others. The medical condition must be indicated in a written statement from the student's licensed health care provider, and a copy of which shall be provided to the school and placed in the student's file. When a student is placed in seclusion, a school employee shall be able to **see and hear the student** at all times.

If a seclusion room has a locking door it must be designed to ensure that the lock automatically disengages when the school employee viewing the student walks away from the seclusion room, or in cases of emergency, such as fire or severe weather.

A seclusion room must be a **safe place**. The room must have good ventilation and lighting, and be free of any condition that could be a danger to the student. The room must also be similar to other rooms where students frequent.

Seclusion is **not time-out**, which is a behavioral intervention in which a student is temporarily removed from a learning activity without being confined.

Parents' Rights Flyer



A Family Guide to the Use of Emergency Safety Interventions (Seclusion and Restraint) in Kansas



What are Emergency Safety Interventions?

Emergency Safety Interventions (ESI) are seclusion and restraint that are used when the student presents a reasonable and immediate danger to self or others.

What is Seclusion?

Seclusion means placement of a student in a location where all the following conditions are met:

1. the student is **placed** in an enclosed area by school personnel;
2. the student is purposefully **isolated** from other adults and peers; and,
3. the student is prevented from leaving, or the student reasonably believes that such student will be prevented from leaving, the enclosed area.



Time-out is not the same as seclusion. Time-out is when a student is temporarily removed from the learning activity, but is not confined.

What is Restraint?

Restraint can take form in different ways. **Mechanical restraint** is defined as any device or object used to limit a person's movement. The use of mechanical restraint is prohibited in Kansas except those protective or stabilizing devices ordered by a person appropriately licensed to issue the order for the device. Mechanical restraint used by a law enforcement officer in carrying out law enforcement duties is allowed. Seatbelts and/or other safety equipment when used to secure students during transportation are also allowed.

The definition of **physical restraint** is bodily force used to substantially limit a student's movement. The use of prone physical restraint (face-down) and supine physical restraint (face-up) are prohibited. Physical restraint may not obstruct the airway of the student or impact the student's primary mode of communication.

Chemical restraint is prohibited in Kansas. A student may take prescribed treatments for a medical or psychiatric condition when they are prescribed by a person who is properly licensed to prescribe medication.

Consensual, solicited, or unintentional contact and contact to provide comfort, assistance, or instruction is not physical restraint.

Why focus on Positive Interventions?

Positive Interventions help build positive relationships and encourage new behaviors. Positive interventions also reinforce new skills and increase self-satisfaction and optimism among youth, parents and teachers. All students need to be recognized and rewarded when they are meeting the expectations that have been established. Current research suggests positive recognition (rewards, reinforcements, praise) must occur more frequently than negative recognition. A well-developed behavior intervention plan should include many positive interventions in order to effectively change behavior. The first consideration should be the appropriateness of the interventions. The team should select interventions that are based upon the student's developmental level, motor ability, communication mode and other factors relevant to the student and the disability. Environmental and context related factors should also be considered. These might include things such as classroom seating, noise levels, peer issues, instruction that is too hard or too easy, transitions, and changes in the setting.

Behavioral strategies, particularly when implemented as part of a school-wide program of positive behavioral supports, can be used to address the underlying causes of dangerous behavior and reduce the likelihood that restraint or seclusion will need to be used.

*U.S. Department of
Education Restraint and
Seclusion: Resource
Document*

Replacement Behaviors

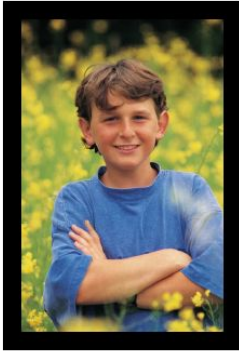
A replacement behavior is when a student replaces an inappropriate behavior with an appropriate one that continues to serve the same function for the student. When selecting replacement behaviors, the team should address the following questions:

- Does the replacement behavior work as well as the challenging behavior in meeting the student's needs?
- Will it be an acceptable alternative to the challenging behavior?
- Will the replacement behavior be something the student will choose to do and that his or her family and teachers support?
- Will the replacement behavior help build a positive reputation for the student?

Students should be recognized and rewarded for choosing to utilize replacement behaviors to be most effective.

Functional Behavioral Assessments

All behaviors are functional and are maintained in environments that support them. If your child's behavior impedes the learning of self or others, you



may consider requesting a functional behavioral assessment. A Functional Behavioral Assessment can help teams determine the when, where, how and why problematic behavior occurs. A comprehensive assessment includes interviews, record reviews, observation and data collection, graphing data collected, testing hypotheses, curriculum analysis, implementation of interventions and evaluation of effectiveness of the plan. Assessments should identify antecedents (what happens just before the behavior occurs), a very clearly defined picture of the behavior that is occurring, and the reinforcers (what happens just after the behavior occurs). If a behavior meets a function for the student, the behavior will continue. Teams need to determine what the function of the behavior is so that they may provide successful interventions or teach replacement behaviors that meet the same function for the student.

Behavior Intervention Plans

Behavior Intervention Plans (BIP) should be positive and instructive and based upon a functional behavioral assessment. A BIP should address:

- The function of the behavior
- Effective teaching of the expected behavior
- Rewards and consequences that are meaningful to the student
- Opportunities to self-manage behaviors

TIP

A functional behavioral assessment can be conducted at any time for a student who does not respond to school-wide behavioral interventions. Following the assessment, a behavior intervention plan may be developed. As a parent, you have the right to request a functional behavioral assessment. Contact Families Together for further assistance.

When May Emergency Safety Intervention be Used?

- May only be used when a student presents a reasonable and immediate danger of physical harm to such student or others with the present ability to cause physical harm.
- Less restrictive alternatives, such as positive behavior interventions support, must be deemed inappropriate or ineffective under the circumstances by the school employee witnessing the student's behavior prior to the use of any ESIs.
- The use of ESI must stop as soon as the immediate danger of physical harm ends.
- ESI cannot be used is used for purposes of discipline, punishment, or for the convenience of a school employee.
- A student may not be subjected to seclusion if the student is known to have a medical condition that could put the student in mental or physical danger as a result of seclusion. The existence of this medical condition must be indicated in a written statement from the student's licensed health care provider that is provided to the school and is placed in the student's file. Note that this exception does not apply to restraint.
- Violent destruction of property may also prompt the use of ESI.



What are the Requirements for Seclusion?



When a student is placed in seclusion, a school employee must be able to see and hear the student at all times.

All seclusion rooms that have a locking door must be designed to make sure that the lock automatically disengages when the school employee watching the student walks away from the seclusion room, or in cases of emergency, such as fire or severe weather.

A seclusion room must be a safe place with proportional and similar characteristics as other rooms where students frequent. A seclusion room must be free of anything that could be a danger to the student and must be well-ventilated and sufficiently lighted.

When Must a Parent be Notified an ESI has been Used?

- The school must notify the parent the same day the ESI was used. If the parent cannot be notified, then the school must notify an emergency contact person for the student.
- Documentation of the ESI used must be completed and provided to the parent by the school day following the day on which the ESI was used.
- The parent must be provided with the following information in writing after the first ESI incident in a school year and provided with this information after subsequent ESI incidents through a web address that contains this information:
 - A copy of the standards of when ESI can be used;
 - A flyer on the parent's rights under ESI law;
 - Information on the parent's right to file a complaint through the local dispute resolution process and the complaint process of the Kansas State Board of Education; and
 - Information that will assist the parent in navigating the complaint process, including contact information for Families Together and the Disability Rights Center of Kansas.



What Can I Do if I Feel that ESI has been Used Inappropriately with My Child?

If a parent believes that ESIs have been used that violate the ESI statute, ESI regulations, or the district's ESI policy, then the parent may file a complaint through the local dispute resolution process within 30 days of the use of ESI.

A parent may file a complaint through the Kansas State Board of Education's complaint process within 30 days from the date that a parent receives a final decision through the local dispute resolution process or after 30 days have passed since the parent filed a complaint through the local dispute resolution process, if the parent has not received the local board's final decision.

Requirements if there is a Third ESI Incident with a Student within a School Year

If there is a third ESI incident within a school year on a student with an IEP or a Section 504 plan, then the student's IEP or Section 504 team must meet within 10 days after the incident to discuss the incident and consider the need to conduct a functional behavioral

analysis (FBA), develop a behavior intervention plan (BIP), or amend the student's BIP if the student already has one. These requirements must be followed unless the student's IEP or Section 504 team agrees on a different process.



If there is a third ESI incident within a school year on a student without an IEP or a Section 504 plan, then the student's parent and school employees must meet within 10 days after the incident to discuss the incident and consider the appropriateness of a referral for a special education evaluation or the need for a FBA or BIP. The school employees involved in this meeting must include a school administrator for the school where the student attends, one of the student's teachers, a school employee involved in the incident, and any other school employees designated by the school administrator as appropriate to attend the meeting.

The student must be invited to any of the meetings referred to previously in this section.

The meetings referred to in this section may be extended beyond the 10-day requirement if the parent of the student is unable to attend within that time period.



If your child has a history of seclusion and restraint or challenging behavior, he or she could be eligible for additional supports and interventions. Parents are welcome to contact Families Together, Inc. to discuss possible options.

**Where can I find out more
information about
Emergency Safety Interventions
(Seclusion and Restraint)?**



Families Together, Inc.

Topeka Parent Center- 1-800-264-6343
topeka@famieliestogetherinc.org

Wichita Parent Center- 1-888-815-6364
wichita@famieliestogetherinc.org

Garden City Parent Center- 1-888-820-6364
gardencity@famieliestogetherinc.org



**Kansas
Parent
Information
Resource
Center**

**Kansas Parent Information
Resource Center (KPIRC)**

1-866-711-6711
www.kpirc..org

**Kansas State Department
of Education (KSDE)**

1-800-203-9462
www.ksde.org
www.ksdetasn.org



Local Dispute Resolution Process

Local Dispute Resolution Process

If a parent believes that an emergency safety intervention has been used on the parent's child in violation of state law or board policy, the parent may file a complaint as specified below.

The board of education encourages parents to attempt to resolve issues relating to the use of ESI informally with the building principal and/or the superintendent before filing a formal complaint with the board. Once an informal complaint is received, the administrator handling such complaint shall investigate such matter, as deemed appropriate by the administrator. In the event that the complaint is resolved informally, the administrator must provide a written report of the informal resolution to the superintendent and the parents and retain a copy of the report at the school. The superintendent will share the informal resolution with the board of education and provide a copy to the state department of education.

If the issues are not resolved informally with the building principal and/or the superintendent, the parents may submit a formal written complaint to the board of education by providing a copy of the complaint to the clerk of the board and the superintendent within thirty (30) days after the parent is informed of the incident.

Upon receipt of a formal written complaint, the board president shall assign an investigator to review the complaint and report findings to the board as a whole. Such investigator may be a board member, a school administrator selected by the board, or a board attorney. Such investigator shall be informed of the obligation to maintain confidentiality of student records and shall report the findings of fact and recommended corrective action, if any, to the board in executive session.

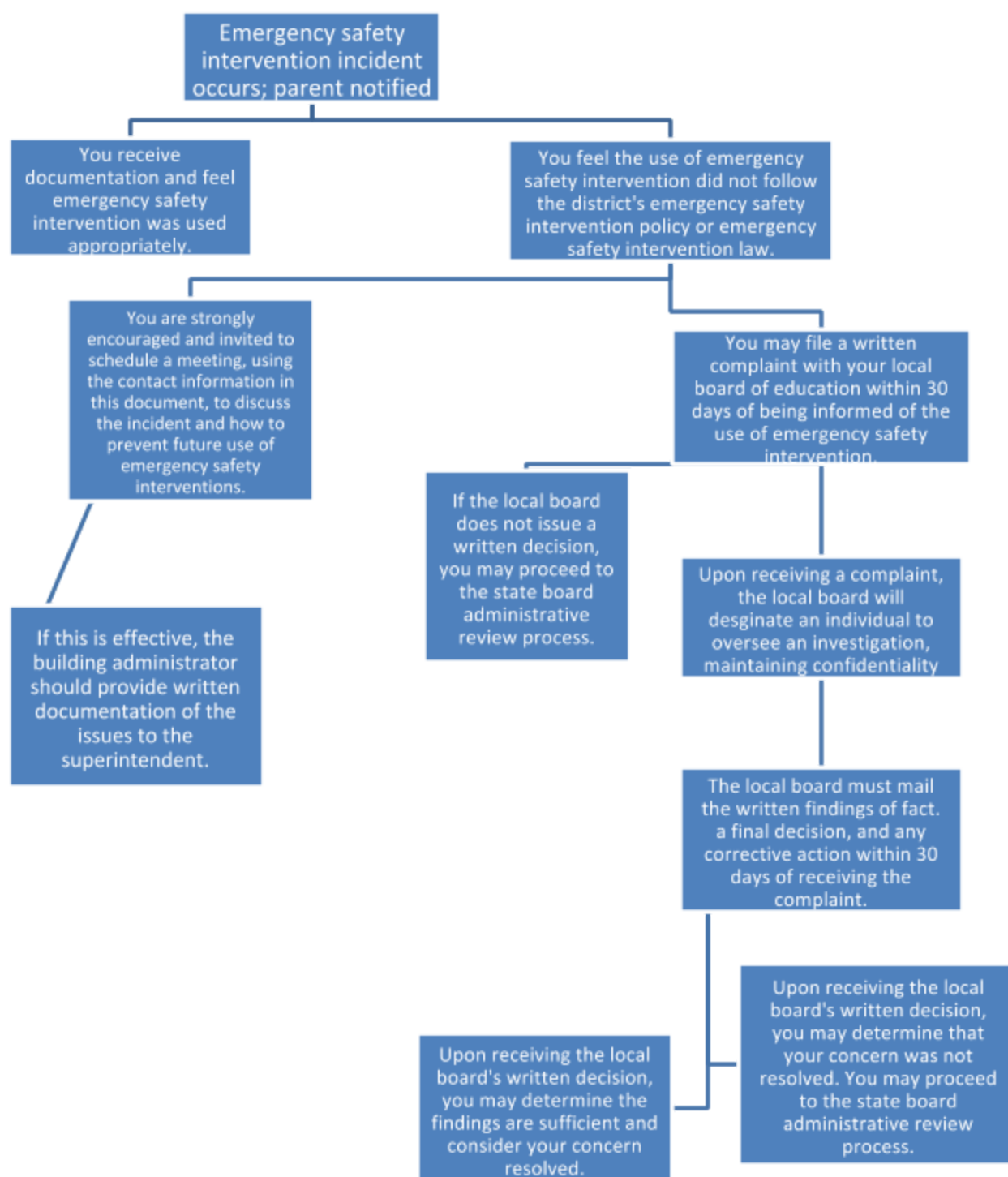
Any such investigation must be completed within thirty (30) days of receipt of the formal written complaint by the board clerk and superintendent. On or before the 30th day after receipt of the written

complaint, the board shall adopt written findings of fact and, if necessary, appropriate corrective action. A copy of the written findings of fact and any corrective action adopted by the board shall only be provided to the parents, the school, and the state department of education and shall be mailed to the parents and the state department within 30 days of the board's receipt of the formal complaint.

If desired, a parent may file a complaint under the state board of education administrative review process within thirty (30) days from the date a final decision is issued pursuant to the local dispute resolution process.

Taken from KASB Policy GAAF – July 2016

Local Dispute Resolution Guide for Parents



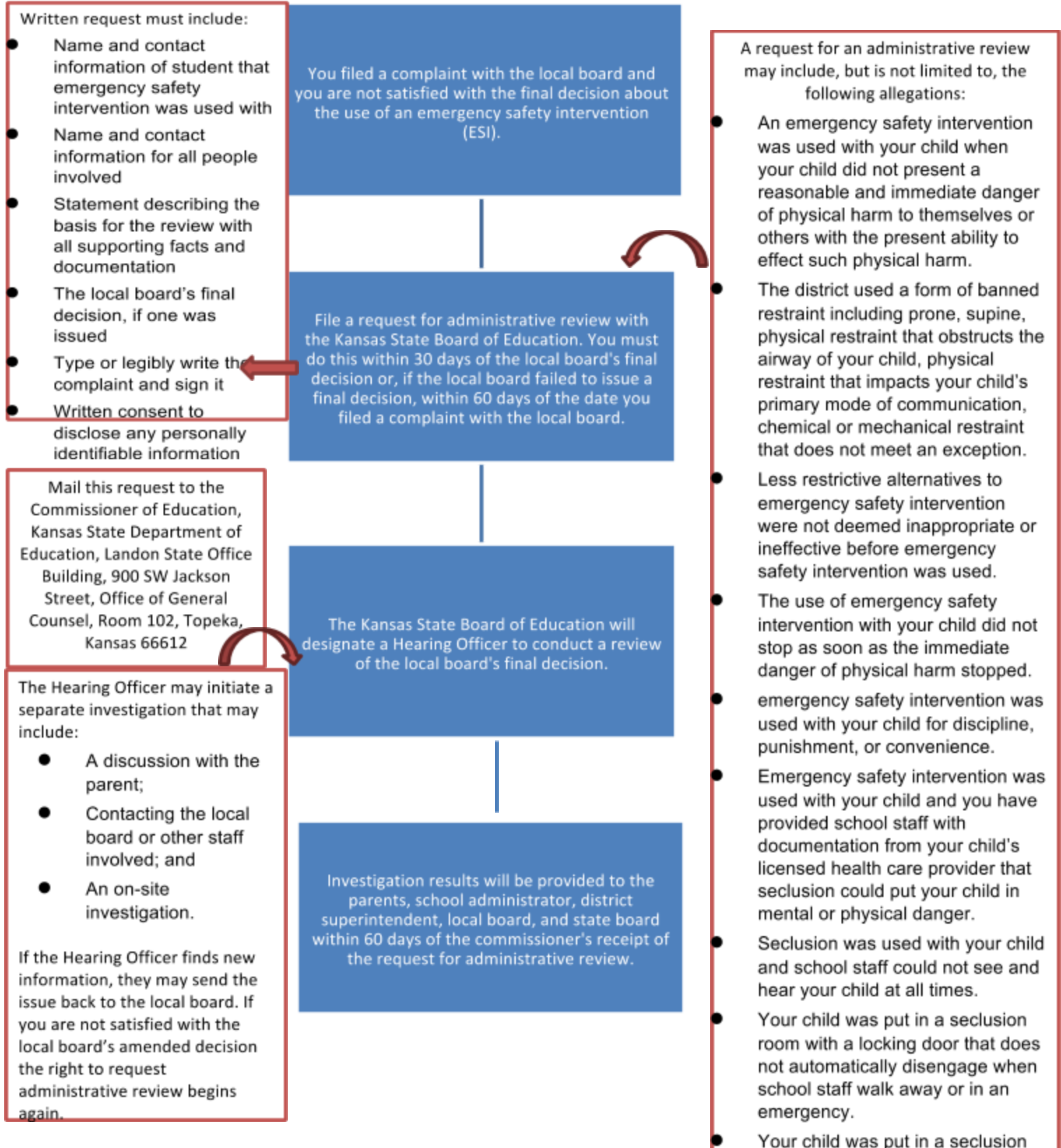
State Board Administrative Review Process

Refer to K.A.R. 91-42-5 for complete information. The following provides a summary of the regulations regarding an administrative review initiated with the Kansas State Board of Education (KSBE).

- If a parent believes an emergency safety intervention was used in violation of K.S.A. 2016 Supp. 72-89d01 through -89d09 or K.A.R. 91-42-1 through -7 and the parent filed a written complaint with their local board of education, then this parent may request an administrative review of the local board's decision from KSBE.
 - The request for administrative review must include the following information:
 - Name of the student and contact information;
 - Names and contact information for all involved parties (teachers, aides, administrators, and district staff), to the extent known;
 - A detailed statement of the reason for requesting an administrative review;
 - Any supporting facts and documentation; and
 - A copy of the complaint filed with the local board, the local board's final decision (if issued).
 - The written request for administrative review must be typed or legibly written and signed by the parent.
 - Relevant documents must be attached or, if unavailable, the documents must be referenced in the request for administrative review.
 - Written consent to disclose any personally identifiable information from the student's education records necessary to conduct an investigation
- The request for administrative review must be filed with the Commissioner of Education within 30 days of the local board issuing its final decision OR within 60 days from the date the parent filed a complaint with the local board, if the local board did not issue a final decision. You may mail this request to the Kansas State Department of Education, Landon State Office Building, 900 SW Jackson Street, Office of General Counsel, Room 102, Topeka, Kansas 66612.
- A Hearing Officer will be designated by KSBE. The Hearing Officer must send a copy of the request for administrative review to the local board.
- The Hearing Officer will consider the local board's final decision and may initiate an investigation that could include:
 - A discussion with the parent, during which additional information may be gathered;
 - Contact with the local board or other district staff to allow the local board to respond to the request with information supporting its final decision; and

- An on-site investigation by Kansas State Department of Education staff.
- If new information is discovered that was not made available to both the parent and the local board during the dispute resolution process, the Hearing Officer may send the issue back to the local board.
 - If sent back to the local board, the Hearing Officer's case will be closed and the local board has 30 days to issue a written amended final decision.
 - If the parent feels the local board's amended final decision does not adequately address the issue, the parent may file a new request for administrative review with the commissioner by following the above process for requesting administrative review. This must be done within 30 days of the local board issuing its amended final decision. If the local board does not issue an amended final decision within 30 days, then the parent has 30 days from the date the Hearing Officer sent the issue back to the local board to file a request for administrative review with the commissioner.
- Within 60 days of receiving the request for administrative review, the Hearing Officer will, in writing, inform the parents, school administrator, district superintendent, local board clerk, and the state board of the results of the review. This time frame may be extended for good cause upon approval of the commissioner.
- The results of the administrative review will contain findings of fact, conclusions of law, and any suggested corrective actions. The Hearing Officer's determination will include one of the following:
 - The local board appropriately resolved the complaint.
 - The local board should re-evaluate the complaint with suggested findings of fact.
 - The Hearing Officer's suggested corrective action is necessary to ensure that local board policies meet legal requirements.

State Administrative Review Guide for Parents



Contact Information

Local

USD 246 Northeast
<http://www.usd246.org/>

Dr. Ray Streeter, Superintendent
620-347-4116
rstreeter@usd246.org

<http://www.usd246.org/home/schools/parent-info/esi-information>

State

General Emergency Safety Intervention Information:
<http://ksdetasn.org/tasn/emergency-safety-interventions-esi-resources>

Emergency Safety Intervention Questions:
Laura Jurgensen or Julie Ehler
Kansas State Department of Education
ljurgensen@ksde.org or **jehler@ksde.org**
785-296-5522 or 785-296-1944

Parent Training and Information Center:
Families Together
<http://famiestogetherinc.org/>
888-815-6364

Protection and Advocacy System:
Disability Rights Center of Kansas
<http://www.drckansas.org/>
877-776-1541 or 785-273-9661