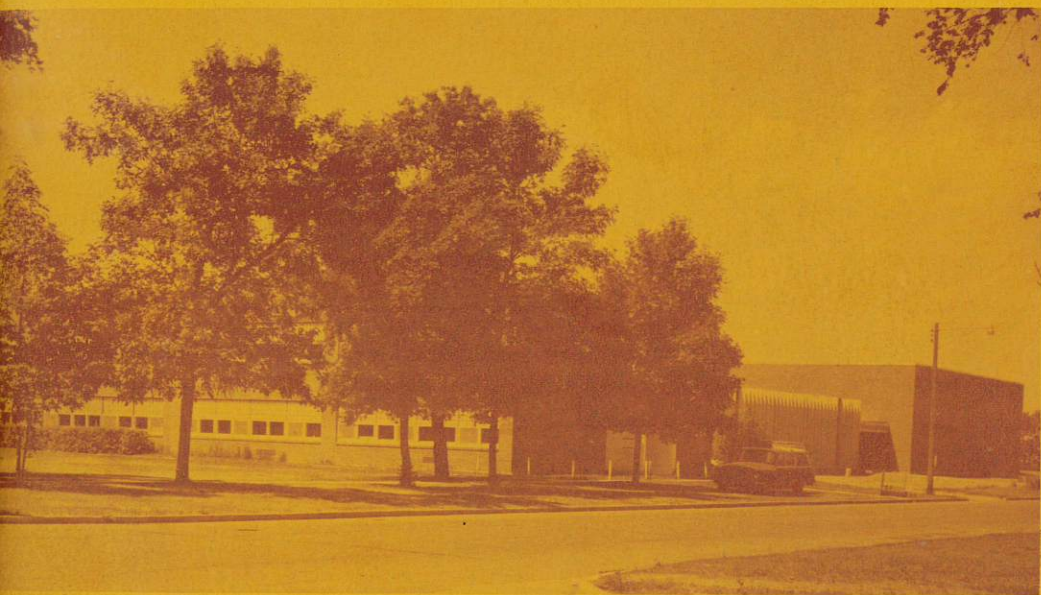


# **WESTHOPE SCHOOL REUNION**

**1899 - 1974**



**JULY 5-6-7, 1974**



## **PRAYER FOR THIS REUNION**

*May nothing evil mar these days  
And may we all be blest  
With perfect health and sunny skies,  
Time for all the friends we've missed.*

*May every reminiscence bring  
Smiles to each schoolmate's face  
And may our joyous laughter ring  
From every gathering place.*

*And when we go our separate ways  
The thoughts of all of these,  
Good friends, good times will all enrich  
Our treasure chest of memories.*

## **DEDICATION**

Our future depends a great deal on our past, in so far as our education is concerned and is the proving ground for the knowledge that has in time, become experiences. The words and inspiration passed on to us by our instructors, forefathers and parents are the guidelines for future conduct of our lives. These people carried a heavy burden for which we are most thankful.

Therefore this booklet is dedicated to you, the graduate, and teachers of the Westhope School and future graduates of the community.

## **WELCOME**

On behalf of all the reunion committees, it is our pleasure to welcome and extend best wishes to all of you. May your visit bring pleasant recollections of your days as a student or teacher and provide you with fond memories for future reminiscing.

We hope that you will enjoy your tour of the new school, new business places and new homes in Westhope.

This is the first time that Westhope has had an all school reunion. A great deal of effort has been expended by all committees in preparation for this event.

To you, Alumni and teachers, we say, relax and enjoy yourself.

## **HISTORY**

We, the history committee of the Westhope High School, wish to take this opportunity to thank everyone who has contributed pictures and information necessary for the completion of this booklet.

Many hours were spent in compiling the lists of former graduates and teachers. We are indebted to so many who have provided the necessary help and information.

A special thanks to the Westhope Standard, County Superintendent of Schools and the Westhope Office of the Superintendent to offer us their records at anytime they were needed. Hope it brings back a few memories for you.



# WESTHOPE HIGH SCHOOL REUNION

1899 — 1974

## DAYBREAK SCHOOL DISTRICT

ORGANIZED AUGUST 11, 1899

Daybreak School District No. 17 was organized on August 11, 1899. (The name of the district was changed to Westhope School District No. 17 at the time of the school reorganization in the 1950s.)

A. Ryder and Joseph David were appointed judges and James Acheson and John S. Babcock clerks. The following voters were present and voted at the first meeting: James Acheson, John Babcock, Jos. David, Thos. Malpass, John Cook, Arthur Westover, Mrs. Annie Ryder, Mrs. Eliza Milligan, Mrs. L. Anderson, and Alfred Ryder.

A. Ryder, Joseph Syson and John S. Babcock were elected directors; James Acheson, treasurer; and John Acheson, clerk.

## FIRST TEACHER

Miss Eve Heighes was the first teacher, being employed for a term of four months at a salary of \$30 a month. The school opened December 3, 1899 in the Logan sod shack, the property of James Acheson. Settlers were rapidly coming into this new country and School No. 2 was opened April 1, 1901 and School No. 3, June 1, 1901, the teachers engaged for those schools being Mrs. Banks and Robert Cochrane.

Up to 1907, the following teachers had taught in the district; in the order named: Miss Heighes, Miss Feitch, Mrs. Banks, Miss White, Robert Cochrane, John Acheson, Miss Alice Warner, Sam Bynum, Misses Compton, S. M. Acheson, Mr. Smith, Miss Torris, Miss Rolle, Miss Bingley, Mrs. Brazelto, Miss Intermill, Miss Maxfield, Miss Brown, Miss Buck, Pro. Ritter, Miss Quigley, Miss Bunston, Miss Jennie Jensen, Miss Kemp, Miss Davidson, Pro. Barger and Miss Hinds and Gordon Acheson.

A new school was built in the new town of Westhope, 30 x 40, and turned over to the board February 15, 1904. In a write-up in the Westhope Standard in 1907 it is noted "Since that time the population of the district has increased so greatly the board has found it almost impossible to keep up with demands."

This school building (1904) was cut in two parts. Part of it being used to build the Ross Slyter house, presently owned by Lloyd Lesmann, the other the J. M. Schroeder, later Mabel Baumann home, today Donald Seiffert.

## NEW SCHOOL BUILT IN 1907

A fine new school building was constructed in 1907 that was to adequately serve the district until it burned in a fire on Christmas Day 1949.

The building was of brick, two main stories high with a spacious basement and an attic. Trimble and Finkerbinger were the contractors and C. M. Condit was building superintendent in charge of construction. In later years the basement was remodeled to accommodate wash rooms, a Domestic Science room and a shop for Manuel Training. The attic was remodeled to be used for classrooms and a science lab.

The new school was 60 x 72 feet, finished with fir, and hardwood floors throughout.

The new school building was dedicated December 18, 1907 with State Superintendent Stockwell delivering the address. The Westhope city band played and there were songs by





*School Built in 1907.*

the chorus. In speaking of the new building, Mr. Stockwell said, "It is a credit to any community and easily ranks with the best buildings in the state." Mr. Condit presented the building on behalf of the contractors, which was responded to and accepted by W. H. Lackey, president of the board. He said when fully completed the building would cost about \$20,000. Mayor H. D. Warner and Prof. Barger were also speakers. The response on behalf of the scholars was given by Winthrop Warner.

Members of the school board were W. H. Lackey, president; Neil McDougall, J. J. Stephens, directors; James Acheson, treasurer and J. F. Morrison, clerk.

### **THE DEPRESSION YEARS**

The impact of the depression years on our school — and of all schools — was tremendous. The main lack was money. People were out of work, there were no crops, prices were low, and taxes were not being paid.

The younger graduates of WHS will no doubt find it impossible to visualize conditions as they were during those years. And, many who lived through them find any comparison between then and now a major feat.

For the fiscal year ending June 30, 1932, total receipts of the district were \$12,651.09; total expenditures \$14,887.47 of which teachers' salaries were \$10,094 and operation of plant \$2325. All these figures are in the general fund.

In 1932 the board announced they would pay as much cash as possible on salaries, etc. and the balance registered warrants. The warrants were as "good as gold" but sometimes had to be held for considerable periods and if they had to be cashed before being called usually were heavily discounted by the buyer.

There was no basketball in 1932 and for several succeeding years. There just was not the money to heat a separate building and make the necessary repairs. Luxuries such as extra curricular activities were the first to feel the pinch.

For the fiscal year ending June 30, 1933 receipts dropped still more and further economies were necessary. Total receipts in the general fund were \$8,984.37; total expenditures in general fund \$10,504.69 of which teachers salaries were \$7110.36; operation of plant \$718.81; light and water \$90.27. Cash on hand July 1, 1933 was \$2003.39.

By 1936, receipts had climbed slightly for a total in the general fund of \$12,849.24, and expenditures \$12,909.52. Teachers' salaries totaled \$8000.00 and operation of the plant, including janitors' wages, \$2184.88.

Yet — in spite of the dire impact these figures may present, education in the schools did go on. Some of the frills were missing, and teachers were getting by like everyone else, on an income, that in the light of present day finances seem rather ridiculous. Yet teaching jobs were hard to get and the school boards never had any lack of applicants.

The fundamentals of education were maintained and the compiler of the material for this article, in looking over the list of graduates during the depression years, can realize the students of those years were equal, scholastically and otherwise, to any period before or since.

There wasn't much money for entertainment but the school students seemed to make their own entertainment with more plays, musical events, sleigh rides and ski parties. The social life as well as the education aspects did not suffer as much as a student of the 1970 era might suspect.

### **NEW GYMNASIUM DEDICATED IN 1939 MEANT HOPES REALIZED**

One of the dire needs of the school during the depression years of the 1930s was a gymnasium.

The hopes of many years were realized when the new gymnasium and auditorium, built with WPA labor, was dedicated October 31, 1939.

Back in 1922 a project was sparked by Rev. Louis Evans of the Presbyterian church in Westhope to convert the old New London Hotel into a gymnasium. This was done with the second floor removed and a spectator balcony around the perimeter of the building. This provided quite a good playing floor for the time, and the high school used the gym.

After two or three years the Presbyterian Church sold the gym to the school district and they continued to use it as a gym for another 10 years.

The building needed extensive repairs and the depression years of the early '30s made such expense impossible. For four years the high school did not have any basketball, at least not any inter-school competition or organized teams; and in 1934 the old gym was torn down.

### **DREAMS FOR A NEW GYM**

March 18, 1938 the school board met with WPA engineers to go over plans for a new gymnasium and auditorium. In addition to the gym, the project, as planned, would include modernizing the present school building with running water and sanitary toilets. The board signed up for the project and it was approved by the WPA. All labor will be furnished by the WPA under a federal project and they will also pay for about \$2000 worth of material. The district's share was expected to be about \$10,000.

A special election to approve a \$10,000 bond issue carried by a 105 to 33 vote. The WPA expenditure will be \$11,625 of which \$9531 is for labor and \$2094 other costs, including some material. Excavation began the end of July and contracts for material, heating, steel



and plumbing were let. Work got underway September 1. By November 17 the gym was almost enclosed.

The building was attached to the north side of the old school and had a fire wall and fire door.

The new gym was dedicated October 31, 1939 and was really a gala occasion, the fruit of the dreams of many years. This gym was, at the time, the finest gymnasium in Bottineau County and for several years, many county and district tournaments were held here.

It was also used as an auditorium and many were the musical events, operettas, band concerts, school plays, etc. that were held there. It was also used as a community center.

Perhaps in the light of present building costs, such a project does not seem so significant, but when we realize that the total cost of the gymnasium, in depression dollars, represented as much as it cost to run the entire school for almost two years. The district share alone of \$10,000 was almost exactly equal to the total receipts of the district for several of the depression years.

It was a great accomplishment and filled a vital need of the school and community.



*Christmas Day Fire — 1949.*

## **CHRISTMAS DAY FIRE DESTROYS WESTHOPE SCHOOL**

*(Excerpts from article in the Westhope Standard)*

Westhope, Daybreak School District, and the community generally, received a bleak Christmas present when fire completely destroyed the Westhope school Christmas morning, leaving only the bare walls standing two hours after the alarm was turned in at 10:30 a.m. The gymnasium was saved with practically no damage. This, and the fact that a new and finer school building must rise from the ashes of the old, are bright spots in an otherwise bleak picture.

The school board has been at work ordering new equipment, books, and supplies and getting a line on equipment that may be used, and arranging for temporary housing for the school, and indicated that all classes would be resumed on January 9th as scheduled.

The gymnasium, built in 1938 and 1939, mostly of steel, brick and concrete and separated from the main building by a fire wall, was saved with almost no damage. The fire department when they saw the main school could not be saved concentrated on saving the gym.

When school resumed, high school classes were held in the gym, the grades were held in the Masonic Temple and the Presbyterian Church. Several other buildings in town were offered as temporary quarters.

## **SCHOOL REORGANIZATION**

Even before the Christmas Day 1949 fire which destroyed the Westhope school, the matter of school reorganization was being considered seriously for this area.

School reorganization meetings were held in the county in June 1949 and at the meeting in Westhope there was a favorable reaction and tentative proposals were drawn up.

A special election was held April 26, 1950 to vote on a new common school district to be known as Westhope School District No. 17. In general, the district would comprise all of Daybreak (Richburg Twp.), the Northeast half of Rosebud (Wayne), most of Stinson (Bentinck), Sergius and a few sections in Brander.

The large favorable vote carried with it a mandate to build a new school building on the site of the old.

## **DIRECTORS ELECTED**

Directors for the new, enlarged district, were named at the June election and were Robert Stead, Chester Tyson, Henry Christensen, Cecil Matthews and A. O. Benthagen. When the board organized, Mr. Matthews was elected president.

## **BOND ELECTION CARRIES**

A bond election was held August 8th to vote on a bond issue of \$111,400.00. The election carried by a favorable vote of 174 to 40.

The old school had been insured for \$50,000.00 which, added to the bond issue, made a total of \$156,000.00, available for a new building.

Later, when bids were opened on the new building low bids totaled \$184,209 but the board felt that by cutting a few corners here and there they could get the figure down to the \$156,000.00 available.

The board accepted the general contract, and later readvertised for the plumbing and heating and got the bids down to an acceptable figure.

## **SCHOOL OPENS IN NEW BUILDING**

School opened September, 1952 in the new \$156,000 building, although a few minor structural details remained to complete and some of the new equipment had not arrived.

The new school replaces the old building burned to the ground December 25, 1949. In the interim classes had been held in several buildings about town.

Also included in the construction was considerable renovation on the gymnasium.

Teachers who opened classes in the new building: Grades: Gail Bernsdorf, Norma Brown, Loid Ash, Ada Olson, Gladys Wyman, LeRoy Frederick. High School: Ann Sukumlyn, Don Schultz, Don Mizere and Superintendent John Hegvik.

## **NEW SCHOOL DEDICATED**

The new building for Westhope School District, was dedicated at ceremonies February 8, 1953. The building was completed last fall and had been used some the preceding spring when as yet not fully completed.





New \$156,000 school building.

C. A. Matthews, chairman of the board, traced the history of the new building from the time of the fire, thru the period of adjustment, to completion. Other board members were Henry Christensen, Chester Tyson, Robert Stead, and A. O. Benthagen.

The dedication address was made by State Superintendent of Public Instruction M. F. Peterson. Superintendent Peterson was apparently impressed by the new building as he later asked for plans, financial report, etc., on the construction, as the department plans to use it as a model for other schools in the state.

### ADDITION BUILT TO NEW SCHOOL

Enrollment in the Westhope school had increased every year since the new building was opened in 1952, and the school was crowded to the point of overflow.

In an election January 23, 1957 it was proposed to construct a 60-foot addition on the east wing of the original school. Tied in with the package presented to the voters would be construction of a new gymnasium, 92 x 112 feet. The school addition would have cost \$80,000 and the gymnasium \$110,000.

The bond issue and levy increase carried Yes 120, No 80, but did not have the needed two-thirds margin.

In a second election, April 8th, the gym proposal was shelved, and voters approved a \$95,000 bond issue 170 to 48.

The 60 foot addition was to include, in the two story structure, two elementary classrooms, a hot lunch department, science lab and music room.

Contracts were let in June and classes opened in the new addition in January 1958.

### PART OF SCOTIA SPECIAL JOINS WESTHOPE

Under further school reorganization part of Scotia Special School District, including the village of Landa, was annexed to the Westhope School District, in July 1962.

At a meeting of voters of Scotia Special in April 1960, discussion favored building a new grade school building. Early in 1961 bonds were voted by the Scotia District in the amount of \$100,000 were favored Yes 152, No 38. Bids were called in April 1961.

Work on the new Landa grade school began in July 1961, and that fall Landa High School students were bussed to Westhope.

In the meantime two portions of the Scotia Special District had joined the Souris School District.

In July 1962 a petition with 140 signers was presented to the County Board asking that the balance of Scotia Special be annexed to Westhope, and this was granted. Valuation of the portion of Scotia annexed to Westhope was \$376,068, which gave the Westhope District a total valuation of \$1,700,000.00.

The new Landa school was in operation in September 1962 and grades 1 through 8 were taught with an enrollment of 34.

### NEW GYM, SCHOOL ADDITION BUILT IN 1967

After turning down the bond issue three times, voters of Westhope School District approved a \$205,000 bond issue to build a new gymnasium at the school, together with additional classrooms and considerable remodeling on the present structure. The first bond election was on May 1965, with the approving vote coming a year later in May 1966.

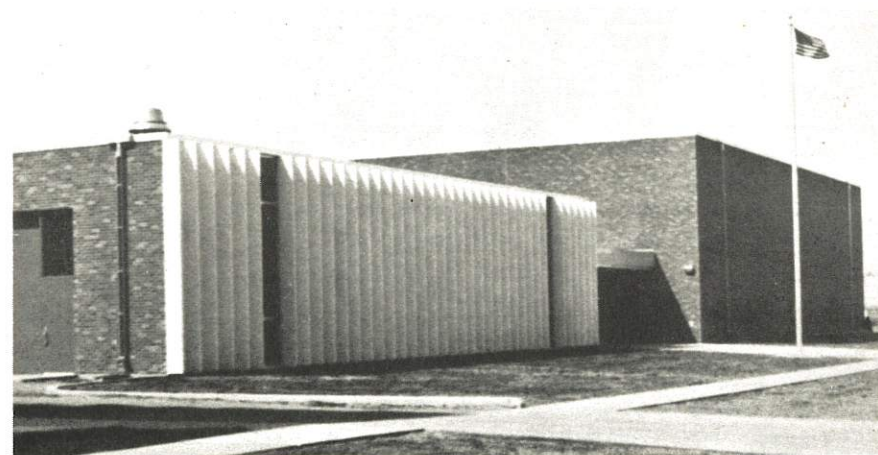
Cost of the addition and remodeling was estimated at \$380,000 with the difference between cost and bond issue to come from the building fund. What was probably an all-time record vote was cast in the fourth special bond election with 541 votes cast of which there were Yes 400, No 139.

Work on the new addition was virtually completed by the September 5th, 1967 opening of school.

A feature of the new addition is the new gymnasium with a 90 x 98 foot floor which at the time of completion was without doubt the largest and finest gym in the county. Fold-back seating along the walls will accommodate 850 spectators. There are shower rooms for both boys and girls, storage rooms, an office and other details.

A new Industrial Arts room is also an impressive feature of the new building. This measures 38 x 60 feet and will enable the offering of courses in electric and acetylene welding, auto mechanics as well as mechanical drawing and woodworking.

The new band room covers the same area, 38 x 60 feet and is built with risers on the floor to accommodate the various instrumental sections. Cabinets line one wall which will



New gym, school addition — 1967.



be used for music storage as well as space for band uniforms, chorus gowns, etc. There are also practice rooms as well as an office in the music area.

The old band room has been remodeled and is being used for Home Ec. This room, as well as the music room and other rooms are carpeted.

A new heating plant has been installed in the new addition in an area that adjoins the boiler room that had previously been used. Both heating plants will be in use.

### COMPREHENSIVE EDUCATION PROGRAM OFFERED

A 1968 article in the Westhope Standard points out that many changes have been made in the education program at Westhope school in the 12 years prior to 1968, the most important of which took place in 1967 when the new plant was completed.

**The Music Department** is one of the finest housed in the area. It is carpeted and has fine acoustics. Over 50 percent of the high school students and a third of the total enrollment are involved in music.

**The Industrial Arts Department** has given students the opportunity to express themselves in many fields previously not available. These areas include welding, automotive mechanics, woodwork, advanced mechanical drawing, and electrical and industrial research programs.

**With the new gymnasium facilities**, students receive benefits from the greater range of physical activities now encountered. The new facilities have made it possible for all students to participate in the physical education program.

Much new equipment has been acquired through the Federal Program for the Science and Math programs. With the facilities provided a comprehensive program has been established and courses in Physics, Chemistry, Biology, Physical Science, Life Science, Geometry, Advanced Algebra and Trigonometry are being offered.

**In the business department** a complete program is being offered and plans are being made to expand the English department.

The completely renovated **Home Ec. Department** offers facilities for complete courses of study including Foods and Nutrition, Consumer Education, Home Furnishing, Child Care and Development, Textiles and Clothing, Family and Social Relationships. The area has completely new kitchen settings which include stoves, double sinks, extensive cabinetry space and refrigerators. Also included in the food department are an automatic dishwasher, clothes washer and dryer. The Clothing Department includes four sewing centers, changing rooms, work tables and storage facilities.

### THE BUDGET FOR 1974

\$265,400.00

### NOTES

In 1921 — R. W. McLees' Superintendent salary \$2700.00. This administration was credited with bringing the "University to Westhope."

Football introduced, also basketball, track and baseball

The first school band organized by A. L. Kadlac

Girls' Glee Club and Literary Societies founded

Fred W. Graff Superintendent 1914, salary \$1200.00

Superintendent of today, salary \$13,500.00

Buildings: 1907 - \$20,000.00 — Gym: 1938 - \$10,000.00

New school of 1952: bonds \$156,000.00. Completion of same \$235,000.00

School edition 1958: bonds \$95,000.00

New gym 1967: bonds \$205,000.00 — Completion: \$308,000.00

## WESTHOPE SCHOOL BOARD NOTES

### DIRECTORS 1900-1974

Alfred Ryder  
Joseph Suson  
John S. Babcock  
H. Hearonemus  
George Covey  
James Townsend  
August Seiffert  
George Oake  
J. J. Stephens  
J. V. L. Hilpot  
A. N. Baumann  
Charles Durnin  
R. M. Trimble  
E. E. Greene  
H. A. Meddaugh  
Oliver Deschamp  
John Condit  
Clarence Lodoen  
Robert Stead  
Chester Tyson  
Cecil A. Matthews - 22 years  
A. O. Benthagen  
Henry Christensen  
Elmer Trimble  
Giebert Condit  
T. A. Finday  
Wm. L. Ruelle  
W. O. Jones  
Palmer Newmyr  
Neil Norris  
E. H. Page  
Jack Sandy  
Lyle Sisk  
Donald Stratton  
Mrs. Marjorie Teske  
Paul Stratton  
Oscar Talcott  
Lyle Sivertson  
Arlyn Rosendahl  
Robert McCann  
M. L. Lelson  
Alfred Sivertson  
Lester Cleven  
Win Baumann  
Maurice Martin  
Arnold Bangs  
Lester Ketterling  
George Fletcher  
Jerold Fraser  
Joe O'Connor  
Ingwald Martinson  
Earl Kenna

### CLERKS

1900 - C. M. Reese  
1901-02 - Robert Cochrane  
1903 - John Acheson  
1904-08 - John Morrison  
1908 - George Kalbfliesch  
1909-11 - S. T. Ronning  
1912-18 - W. J. Reynolds  
1919-22 - George Kalbfliesch  
1922-23 - W. J. Cooper  
1924-35 - A. A. McMaster  
1936-49 - A. O. Benthagen  
1950-54 - John Hegvik  
1955-56 - Harry Kline  
1957-59 - Glenn Jensen  
1959-61 - Paul Genderson  
1962-67 - Glenn Jensen  
1967-69 - Leonard Nygaard  
1970 - Virginia Lodoen

### TREASURERS

1902-08 - James Acheson  
1908-12 - C. E. Johnson  
1912-20 - James Lattimer  
1920-26 - J. L. Page  
1926-50 - W. T. Munn  
1950-56 - Donald Page  
1956-57 - Robert Carey  
1958-72 - Vera Langham  
1972 - Marie Martin

### HOT LUNCH COOKS

Gina Hegdahl  
Mabel Livesay  
Mae Olson  
Golda Morrison  
Minnie Kelly  
Irene Robillard  
Amanda Skagen  
Alma Rosendahl  
Theresa Slyter  
Hazel Hanson  
Sophie Hegdahl  
Mrs. L. Hale  
Ruth Sandy

### BUS DRIVERS

Darrell Hulse - 18 years  
Henry Ledoux  
Walter Jensen  
Leonard Lodoen  
Ingwald Rosendahl  
Kermit Thompson  
Lester Seth  
J. H. Fraser  
Bud Jensen  
Dave Henderson  
Les Hale  
L. H. Hale  
Fred Zahn  
Paul White  
Jim Sandy  
Roger Cooper  
LaVern Larson  
Bud Juve  
Wm. Belcourt  
Arthur Ledoux  
John Ledoux  
Bert LeMay  
Bill Williams  
Sylvia Williams

### CUSTODIANS

John Walker  
Blaine Trimble  
Ed Hanson  
W. B. Rodgers  
Les Hale  
I. B. Olson  
Ed Nord  
Len DeCrow  
Ross Slyter  
Joe Cossette  
Walter Kormann  
Orval Deschamp  
Jim Sandy  
Fred Huston



**SUPERINTENDENTS**

W. B. Barger  
F. U. Schroeder  
Fred W. Graff  
E. Durocher  
R. W. McLees  
W. A. McDougall  
H. K. Brown  
S. H. Miller  
R. J. Ganible  
G. R. Squires  
John M. McPherson  
R. C. Wagner  
Henry Sausker  
Hayden Williams  
John Sorum  
Ernest Hunter  
William Hagau  
Victor Hegdahl  
Max Allen  
John Hegvik  
Alton Hanson  
S. J. Gores  
Duane Johnson  
Victor Sletten  
Richard Skarperud

**TEACHERS**

J. Gordon Acheson  
S. M. Acheson  
Selita Abercrambie  
S. Andrews  
Clara E. Agars  
Clara Adams  
Clara Albertson  
Margaret Aikin  
Edna Artz  
Frances Anderson  
Ruth Auer  
Mrs. Grace Anderson  
Max Allen  
Mrs. Valdine Albertson  
Ann Anderson  
Mable Avery  
Ruth Anderson  
Janice Marie Anderson  
Rita Johnson Asheim  
S. W. Bynnm  
Louise Bringley  
M. Elanor Burntson  
M. S. Brazelton  
Mary Buck  
Gussie Brown  
W. B. Barger

Lillie Berg  
Florence Bruce  
Mrs. L. F. Barton  
George J. Benson  
Gladys Bauvany  
Lorraine Burns  
Signe Bekkerus  
Gladys Baumann  
Marjorie Bistodeau  
H. K. Brown  
Ruth Bristol  
Genevieve Bohan  
Averill Burleum  
Milton Bratrud  
Dorothy Bush  
Dorothy Benson  
Ruth Baumann  
Helen Benson  
Norma Brown  
Myrtle Olson Bush  
Gail Burnsorf  
Jim Bailey  
Lois Basech  
Harold Berquist  
Lawrence Boldt  
Lawrence Beaver  
Beatrice Brandt  
Dorcas B. Buechler  
Barbara Burud  
George Bales  
Ruby Berentson  
Lula Compton  
Bessie Compton  
Agnes Charley  
Isabel Currie  
Mae Colliton  
Lillian Cook  
Helen Colliton  
Bertha Corning  
B. J. Chervenka  
Ida Clark  
Mrs. S. M. Condie  
Amy Cooper  
Helen Clark  
Mrs. E. L. Coe  
Robert Carey  
Edith Cossette  
Charlotte Chance  
Janel Cooper  
Virginia Loy Chance  
Roger Cooper  
Margaret Cameron  
Ida Davidson  
Eda Dahl

Jennie Durocher  
E. Durocher  
M. Eva Douglas  
Evelyn Drake  
Madeline Durnin  
Madeline Descamp  
Frances Drake  
Sidney Davy  
Laura Dana  
George Davey  
Mrs. Ethel Drake  
Mrs. Delores Drangsholt  
Elizabeth Dailey  
Delores Deane  
Geneva Dalthrope  
Edna Evans  
Effie Eckburg  
Agnes Engebretson  
Oliver Eilson  
Elizabeth Everett  
Gerhard Ellestad  
George Eltz  
L. J. Frazier  
Mae Farrell  
U. S. Feitham  
Coral Foley  
Olive Ferguson  
Joseph Flynn  
Ella Furians  
Tena Fedje  
Anna Fish  
LeRoy Fredrick  
Joyce Tande  
Mrs. Phyllis Forschen  
Leone Forsythe  
Ruth Fylling  
Ruth Finneman  
Margaret Griue  
O. L. Greene  
Fred Graff  
Myrtle Gallagher  
P. H. Gremsgaard  
Edna Gremsgaard  
Kenneth Gellespie  
Clara Gilbertson  
R. J. Gamble  
Ellen Gregerson  
John Gashwiler  
Sylvester Gores  
Julie Ann Gronbeck  
James Goldsberry  
Roger Gorder  
Sharon Gessele  
Joseph Hughes

Alberta R. Hinds  
Arthur Hagan  
Edith Humes  
Blandie Holt  
Lula Hagan  
Laura Hagan  
Willie Hill  
Lucille J. Hassuer  
Mary Hazlett  
Lillian Hendricks  
U. Hrabe  
Marie Harrison  
Mrs. John Hawker  
Mrs. E. L. Hughes  
Florence Holtz  
Irene Harney  
Ruth Helgersen  
Irmine Hennesy  
Berha Hoerner  
Elma Hunt  
Clara Holum  
Suvilla Hensel  
Enny Haugerud  
William Hubard  
Dorothy Hance  
E. G. Hunter  
William Hogan  
Victor Hegdahl  
Lorraine Harris  
John Hegvik  
Donna Hulse  
James Hill  
Hannah Hanson  
Alton Hanson  
Joyce Haldi  
Bonnie Horner  
Dwight Holter  
Ralph Hendricks  
Rorcas Hansur  
Marlys Haman  
Vernon Hedstrom  
Gordon Hill  
Eliva Heisler  
Mary Huber  
Kenneth Haakenstad  
Evan Hass  
James Henricks  
Ordean Hosna  
Beverly Hudson  
Curtis Hanson  
Susan Hanson  
Cora Intewill  
Myra L. Irving  
Maybelle Jarris

**TEACHERS****(Continued)**

Jennie Jensen  
Catherine Jones  
Saime Joase  
E. L. Johnson  
Rose Jaskoski  
Annie Johnson  
Mrs. H. A. Jensen  
Ursula Johnson  
Marilyn Johnson  
Richard Jensen  
Duane Johnson  
Hilda Jacobson  
Harry Kaplan  
N. Kalbfleisch  
J. R. Kelly  
Anton Kadlac  
Eunice L. Kingsley  
Lloyd King  
Olga Schnekloth  
Clarence Klevjord  
Eugene Kohlman  
June Kline  
Louis Kisling  
Stella Kackey  
Esther Lambe  
O. J. Lilly  
Bessie Lemons  
Avis Lee  
Harlance Larson  
Gordon Lindquist  
Wayne Levang  
Clifton Lee  
Quentin Love  
Karen Love  
Hallie Maxfield  
Sara McDonald  
Floy Maquren  
Flora Munig  
Margaret McLachlan  
Florence McDougall  
Catherine Meagher  
R. W. McLees  
A. D. Morwood  
Alma Menge  
W. A. McDougall  
Forma Mathison  
Fred McElewain  
S. H. Miller  
Alma Mathews  
Lillian McLeod  
Ellen Madsen  
John McPherson

Mrs. Helen Miller  
Mrs. H. A. Meddaugh  
Pearl McPherson  
Luella Marburger  
Esther Matthews  
Marvin Meska  
Donald Mizera  
James Mooney  
Beta Marlow  
Donald Myhra  
Bernice Matteson  
Mellie Madsen  
Amy Martinson  
Jennie Myrand  
Catherine Matteson  
Ernest Mott  
Marshall Maxwell  
Mathilda Nelson  
Jessie H. Neins  
V. Marie Nesting  
Father Neva  
Leone Norton  
Anna Nelson  
Ruth Osgood  
Aurelia O'Dea  
Amelia Olson  
Ada Olson  
Mrs. Clara Olson  
Michael Oberholtzer  
Ilene Odegard  
Albina Pucket  
Mabel Pfschm  
Guy Phippips  
Mrs. H. J. Patterson  
A. Pixley  
J. Gayle Pugh  
Lillian Pederson  
Dorothy Peterson  
Ardyce Peterson  
Doris Pederson  
Leonard Payton  
Sharron Page  
Olana Petrucci  
Margaret Quigley  
Katherine Qusley  
Clara E. Rolle  
Petra Romstead  
B. Rorning  
Edith Ralston  
Hazel Riley  
Blanche Rothert  
Grace Reynolds  
Evelyn Rintoul  
Donna Rasmusson

Olaf Ringerud  
Lillie Rasmussen  
Lui Ravnaas  
LeRoi Robertson  
Carol Ravnaas  
Vern Rohde  
Jay Rasmusson  
Sharon Romfo  
Peter Smith  
Mayme Simmer  
F. U. Schrader  
Coward Schirmer  
Irene Stinson  
H. S. Sydenstricker  
A. E. Strandberg  
Dorothy Schroeder  
G. R. Squire  
Mrs. G. R. Squire  
Oral Stone  
Earl Schell  
Eleanore Schroeder  
Henry Sausker  
Odella Solheim  
Evelyn Severts  
Delores Smestad  
John Sorum  
Mabel Skarphol  
Jean Skarphol  
Laura Strangestadler  
Beth Sund  
Donald Schultz  
Lorraine Sanderson  
Ann Sukumlyn  
Lois Skinn  
Christina Skau  
Dennis Schuske  
Victor Sletten  
Doris Sletten  
Richard Skarperud  
Julia Ann Sheid  
Gary Stenehem  
Esther Thorsell  
C. S. Trovent  
Leola Trimble  
Anna Thompson  
Veda Thompson  
O. Thompson  
E. Teerans  
Elsie Townsend  
Bessie Thompson  
Mary Thorpe  
Olive Turner  
Marvin Thom  
Mergie Myhra

Julie Ann Thacker  
J. Carson Valentine  
Alice Warner  
Olivia Wagle  
Beulah Wohlfield  
H. A. Warner  
Harold Wakefield  
A. Wagle  
A. Wakefield  
E. Waterman  
Blanche Wyman  
Margaret Warner  
Sabina Weber  
Antoinette Whiteman  
Marie Welo  
Emerson Woodside  
Frances Witting  
Melba Withey  
O. Wagle  
R. C. Wagner  
Gladys Wyman  
Hayden Williams  
Lillian Wishek  
Bernadine Wentz  
DuWayne Wachter  
Mrs. DuWayne Wachter  
Thora Whetter  
Lester Wyman  
Duane Young



**Class of 1934 (Continued)**

Edna M. Lundy  
Walter J. McKechnie  
Alice L. Rice  
Robert T. Schroeder  
Eunice C. Strand  
Franklin V. Stone  
Rex H. Wells\*

**Class of 1935**

*"Dependability is the real key to success"*

Helen M. Bangs  
M. Louise Barr  
Geneva G. Chapman  
Elaine E. Crum  
Charles Leslie Drake  
John J. Egger  
Esther V. Fulwiler\*  
Harold Hestekind  
Verna Irene Jensen  
Elphie E. Ledoux\*  
Kathryn M. Mathison  
M. Frances O'Connor  
Icel I. Rodgers\*

**Class of 1936**

*"Tonight we launch, tomorrow we anchor"*

Gerda E. DePlace  
Sylvia Louise Brashear  
Jane Patricia Drake  
Leo Lohman Fulwiler  
Alice Marlene Houmann  
John Lynn King  
Barbara Elaine Larson  
Lesley Madsen  
Wesley Madsen  
James Hugh Munn  
Opal Ruth Trimble  
Ray Wells

**Class of 1937**

Edith A. Armer  
Norma C. Bangs  
Robert F. Baumann  
Alwood R. Berg  
Milton Condit  
Bertha Deschamp  
Walter T. Egger  
Annabel M. Hale  
Harold Erhayd Jensen  
Robert H. Kjelmlyr  
Pauline E. Leithoff

William J. Lundy +  
Betty Ann Mattison  
Malcolm A. McKechnie  
Mary Alice McPherson +  
William Ruelle

**Class of 1938**

*"Climb tho the rocks be rugged"*

Luella K. Arden  
Delores Bangs  
Charles Condit  
Eleanor Crum  
William Egger  
Jeanne Findlay  
Jarold Frazer  
John Fulwiler  
Lillian Hagen  
Jean Hale  
Harvey Jensen  
Kenneth Nesting  
Marjorie Page  
Diris Thomas  
Goldie Trimble  
Keith Williams  
Doris Zeitler

**Class of 1939**

*"Deeds not dreams"*

Lucile Dixon  
Glenn Jensen  
Frances Kelly  
Dorothy Livesay  
Wallace Lundy\*  
Dorothy McKechnie  
Palmer Nermlyr  
Robert Page  
Gayle Robertson  
Harold Sanness  
Lyle Sisk  
Margaret Smith

**Class of 1940**

Jenet Christenson  
Marie D. Christenson  
William Condit  
Richard Deschamp  
Roger Dale Dyer  
Margaret Egger  
James Greene  
Norman Haugen  
Reginald Larson  
Allan Moum  
Lillian Nermlyr

Donald Page  
Vernon Shaner  
John Talcott  
Duane Williams

**Class of 1941**

*"The door to success is labeled PUSH!"*

Harvey Egger\*  
Esther Lavonne Hamblin  
Clifford Eugene Harper  
Helene Houmann  
Oscar Hulse  
Marie Jensen  
Frode Jespersen  
Merna Lanthorn  
Frank Lundy  
Ivan Nielsen  
Ardelle Olson  
Helen Smith

**Class of 1942**

*"On the youth of today, rest the democracy of tomorrow"*

Mary Coleman  
Lois Dixon  
Helen Fulwiler  
Keith Goodwin  
Dillard Howerly  
Elva Jacobson  
Pearl Jensen  
James Page

**Class of 1943**

*"In ourselves, our future lies"*

Florence Belcourt  
Marjorie Condit  
Clifford Deschamp  
Cecil Dixon  
Arline Kelly  
Patricia Jean Keyes  
June Lundy  
Dorothy McLeod  
Dorothy Morrison  
Lloyd Moum  
Donald Stratton

**Class of 1944**

*"Not the sunset, but the dawn"*

Sylvia Downs  
Ellen Howke  
Wallace Hulse  
Frances Jensen  
Jerry Lundy

**Class of 1944 (Continued)**

Evelyn Pyne  
Donna Sandy  
Paul Stratton

**Class of 1945**

*"To make the best better"*

Hazel Armer  
Robert Henry  
Ellen Koons  
Evelyn Resemann  
Merle Moum  
Lorraine Pyne  
Lorraine Rosendahl  
Bruce Arnold Sorum

**Class of 1946**

*"In ourselves, our future lies"*

William Baumann  
Gladys Doreen Ballantyne  
Ruth Ballantyne  
Hazel Cossette  
Donna Henry  
Estel Hulse  
June Jacobson  
Louise Jensen  
Louise Kelly  
Edith Koons\*  
Dorothy Koons  
Hazel Koster  
Joreen Deloris Mahoney  
Donna Mae Meddaugh  
Jack (Lloyd Jerome) Page  
Doris Sletten  
James Smith

**Class of 1947**

*"Past forever gone, future still our own"*

Dorothy Fraser  
Violet Deschamp  
Shirley Jensen  
Janice Meddaugh  
Donald Moum  
Beverly Sandy  
Erling Sannes  
Eleanor Stratton  
Norma Witteman

**Class of 1948**

*"One step at a time, but always forward"*

Ardith Fay Anderson  
Edward Ernest Ashley  
Charles Ballantyne  
Donald Alfred Berg  
Duane Charles Berg  
Marlene Christiansen  
Harvey Lloyd DeMars  
Janis Guss  
Margaret May Koons  
Evelyn Kathleen Jacobson  
Rodric Edward Jensen  
Robert Henry Jensen  
Marian Joyce Matteson  
Marian Carolyn Sannes  
Terrance Raymond Smith  
Wm. Ballantyne

**Class of 1949**

*"The future belongs to those who prepare for it"*

Phyllis Armer  
Doran Christensen  
Evelyn Cossette  
Mabel Dixon  
Orville Jensen  
Gerald Page  
Ruth Sandy  
Ruth Stevenson  
Jean Stratton  
Merle Zahn

**Class of 1950**

Vernita Duffner  
Theodore Hegvik  
Alvin Houmann  
Jack Jensen  
Alice Kelly  
Lois La Vonne Lee  
Delores Soland  
Vera Stratton  
Veda Stratton  
Victor Witteman  
Verble Zahn

**Class of 1951**

*"The more prepared the more powerful"*

Herbert Ballantyne  
Lowell Christensen  
Elsie Deschamp  
Lois Hill

Clara Jespersen  
Kathleen Smith  
Doyle Stead

**Class of 1952**

*"There is room on the top"*

Robert Dixon +  
Donald Frazer  
John Robert Greene  
Marion Nielsen  
Donald E. Picard  
Beverly Rosendahl +  
Jackie Sandy  
Charles Smith +  
Beverly Steinhaus

**Class of 1953**

*"To be, rather than to seem"*

Mary Ellen Brown  
Betty Atkins  
Roy Jespersen  
Duane Hallof  
Helen Dixon  
Kathleen Jensen  
Crystal Howerly  
Pay Carpenter  
Gary Bryson  
Helen Kelly  
Marvel Zahn  
Dennis Smith  
Iola Coleman

**Class of 1954**

*"Today we follow, tomorrow we lead"*

Mae Ashley  
Judith Matteson  
Cecil Matthews  
James Bryson +  
Patricia Lee  
Jean Himle  
Charles Armer  
Darrell Henry  
Alves Benthagen  
Lloyd Sannes  
Donna Nielsen  
Nancy Brown  
Ruth Hawher\*  
Donald Hegvik



**Class of 1955***"American ends with 'I Can'"*

Barbara Helgersen  
 Marlene Weber  
 Kathleen Kormann  
 Marlene Hansen  
 Robert Arden  
 Joan Christianson  
 Leonard Lodoen  
 Jeanette Himle  
 Mavis Hansen  
 Albert Baumann  
 Nelda Soland  
 Curtis Seiffert  
 Donald Himle  
 Janice Steinhaus  
 James Sandy

**Class of 1956***"The past is forever gone,  
but the future is still our own"*

Imogene Armer  
 Gary Witteman  
 Harold Atkins  
 Roberta McLean  
 Mary Ellen Williams  
 Patty Robillard  
 Marjorie Himle  
 Violet Zahn  
 Robert Krogen  
 Curtis Jensen  
 William MacDonald  
 James Hegdahl  
 Willard Steinhaus  
 Lawrence Sannes  
 Lorraine Stead  
 Janet Matthews

**Class of 1957***"From schools life,  
into life's school"*

Sandra Hovland  
 Rosalie Williams  
 Thelma Stead  
 Wanda Hansen  
 Lonnie Benthagen  
 Thomas Soland  
 Rosalie Siercks  
 Connie Seiffert  
 James Brown  
 Robert Ballantyne  
 Eleanore Sannes  
 Gerald McKechnie  
 Donald Baumann

Glenda Kirk  
 Ronne Baumann  
 Dale Lesmann  
 Larry Klabo  
 Roger Sand

**Class of 1958***"We have crossed the bay,  
the ocean lies before us"*

Helen Kormann  
 Judith Damstrom  
 Bonnie Cameron  
 Gordon Henry  
 Lonnie Cook  
 John Bollock  
 Ross Slyter, Jr.  
 Bernice Hulse  
 Lois Hawker  
 John Gashwiler  
 Kathryn Brown  
 Orlyn Ballantyne  
 Robert Smith +  
 Dorothy Lee  
 Ronald Houmann  
 Carol Sandy

**Class of 1959***"Bells of the past ring  
bells of the future"*

Richard Williams  
 Beth Nesting  
 Gale Stead  
 Marlene Ballantyne  
 Davie DeMars  
 Arlan Sisk  
 LeRoy Houmann  
 Sandra Cook  
 Ronald Hegdahl  
 Vance Conway  
 Terry Baumann  
 Mary Steinhaus  
 Dryon Rauk  
 Joyce Floberg

**Class of 1960***"Choice, not chance  
determines destiny"*

Sallie June Hovland  
 Mary Margaret Cameron  
 Martha Louise Palmer  
 JoAnn Yvonne Klabo  
 Mary Alice Reinholdt  
 John Elmer Belcourt  
 Rosalie Mae Deschamp

Judy Ann McKechnie  
 Barbara Jean Baumann  
 Elizabeth Ann Kormann  
 Patricia Ann Schmidt  
 Gerald George Sandy  
 Richard Ronald Rosendahl  
 Lawrence Duane Lesmann

**Class of 1961***"The ropes of the past ring  
the bells of the future"*

Paul J. Henrickson  
 James H. Munn, Jr.  
 Helen Nan Madsen  
 Claudia Kay DeMars  
 Marilyn Jane Munn  
 Gary Arthur Lodoen  
 Carolyn Kay Ballantyne  
 William Thompson Matthews  
 John Peter Martinson  
 Maria Theresa Slyter  
 Ronald David Henderson  
 Cheryl JoAnn Rosendahl  
 Arthur Thomas Helgersen  
 Stewart B. Sisk  
 Rita Alice Engelhard  
 Beth Marie Hulse  
 Gaylen Keith Klabo  
 Gordon LeRoy Himle  
 Paul Mathais Hansen, Jr.  
 Dorothy Marie Rauk  
 James Stewart Seiffert

**Class of 1962***"Success comes in Cans,  
Failure in Can'ts"*

Nancy Ellen Munn  
 Nancy Lee Matteson  
 Linda D. Talcott  
 Sandra Jean Thompson  
 Bernadine Ann Slyter  
 Ardis Jean Skagen  
 Carolyn Charlotte Armer  
 Judith H. Halvorson  
 Olive A. Klokstad  
 Lona Gay Sisk  
 Gracia Elaine Lee  
 Carol Jean Page  
 Henry L. Stead  
 Larry A. Jensen  
 James M. Ballantyne  
 Ronald G. Kirk  
 Larry L. Nielsen  
 Mabel Hawker  
 Connie Reinholdt

**Class of 1963***"Take the world as you find  
it, but leave it better"*

Carol Ledoux  
 Gloria DeMars  
 Sonja Hovland  
 Carol A. Juve  
 Denise M. Tyson  
 Linda A. Froseth  
 Margo J. Helgersen  
 Sharon I. Berentson  
 Bonnie R. Hegdahl  
 Delores B. Rauk  
 Janice E. Nielsen  
 Jerry O. Deschamp  
 Carol D. Festvoh  
 Lynda M. Sisk  
 Cheryl D. Cossette  
 Robert J. McKechnie  
 Carl Guderjahn  
 Barbara Belcourt  
 Dennis K. Nygaard  
 Betty O. Ballantyne  
 Gloria A. Robillard  
 Sandra J. Hulse  
 Carolyn M. Larson  
 Beverly A. Lesmann

**Class of 1964***"The door to success  
is labeled PUSH!"*

Betty Nesting  
 Ann Munn  
 Peggy Munn\*  
 Mary Ann Baumann  
 Mylon Lodoen  
 Arlan Akerland  
 James DeMars  
 Linda Drake  
 Phyllis Cleven  
 Carol Robillard  
 Alin Sausker  
 Robert McCann  
 Neil Matteson  
 Lloyd Weber  
 Gary Martinson  
 Julie Nielsen  
 Loyce Helgersen  
 Connie Thompson  
 Joan Marcotte  
 June Sivertson  
 Mike Page  
 Mickey Seiffert  
 Rodney Conwas

Robert Deschamp  
 Gregory Lunde\*

**Class of 1965***"To travel hopefully is a better  
thing than to arrive, and  
the true success is to labor"*

Delores DeMars  
 Donald Henrikson  
 Larry Armer  
 Gary Sisk  
 Mary Lou Sisk  
 Corinne Cleven  
 Steven Mattern  
 Lila Forde  
 Don C. Page, Jr.  
 Orvil Lee  
 David Lee  
 Darwin Bauer  
 Mary Marcotte  
 Alvin Sisk  
 Bonnie Talcott  
 Donald Hansen  
 Cheryl Martinson  
 William Stratton  
 Diann Ballantyne  
 Nancy McLean  
 Sharon Thompson  
 Jon Madsen  
 Robert Bauer  
 Denise Glinz  
 George Lesmann  
 Diane Christensen  
 Teri Todd  
 Harlan Branson  
 Terry Huber  
 Verdine Klokstad  
 Linda Deschamp  
 Nelda Klokstad  
 Shirley Himle  
 Lynn Haugen  
 David Hoiland

**Class of 1966***"Knowledge is our base,  
upon it we must build"*

Margaret McCann  
 Marjorie Martin  
 Judith Sisk  
 Myron Lodoen  
 Glenda DeMars  
 Patricia Marcotte  
 Susan Sausker  
 Rodney Guderjahn

**Kelly McLean**

Janice Ledoux  
 Peggy Lee  
 Mica Brown  
 John Halvorson  
 Jean Carlson  
 Sharon Jenstead  
 Ronald Moum  
 Duane DeMars  
 Laurel Haugen  
 Larry Sisk  
 Duane Ashley  
 Kent Nygaard  
 Richard McKechnie  
 James Baumann  
 Pamela Cook  
 Eva Striker  
 Clifford Slyter  
 James Matteson  
 Karen Deschamp  
 Cheryl Palmer  
 Dennis Engstrom  
 Larry Thompson  
 Glenda Deschamp  
 Robert Sisk

**Class of 1967***"A little learning is a  
dangerous thing -  
drink deep or taste not  
of the Pyreian spring"*

Sheila Spencer  
 Larry Huber  
 Donna Sisk  
 Roger Norris  
 Gayle Odegaard  
 Kathryn Kline  
 Jolene Moum  
 Barbara Lesmann  
 Timothy Matthews  
 Robert Sivertson  
 Patricia Thompson  
 Timothy Engh  
 Diane McKechnie  
 Gary Lee  
 Janet Seiffert  
 JoAnn Soland  
 Terrance Olson  
 Renee Stavheim  
 Glenn Walters  
 Kenneth Bangs  
 Pamela Genre



**Class of 1968**

*"It is always wise to  
look ahead but difficult  
to look farther  
than you can see"*

Susan Munn  
Merlin Martin  
Kristi Johnson  
Heather Cameron  
Don Marcotte  
Barbara Forschen  
Elise Fields  
Carroll Opdahl  
Janet Talcott  
Don Henderson  
Connie Striker  
Dennis McKechnie  
Debbie Todd  
Linda Ballantyne  
Jannie Hegdahl  
David Jensen  
Lester Lesmann  
Bruce Martinson  
Larry Ballantyne  
Terry Klabo  
Donavon Glinz  
Mike Neese  
Milton Lesmann  
Mike Mattern  
Don Sivertson  
Danny Kirk  
David Deschamp  
Mike Neff  
Peggy Deschamp

**Class of 1969**

*"Anyone who hopes  
to succeed, must  
keep on learning"*

Ronald Cleven  
Denita DeMars  
Kathleen Martin  
Kristen Kline  
Faith Striker  
Carla Olson  
Laureen Stratton  
Twyla Lee  
Barry Neese  
Paula Palmer  
Joel Johnson  
Susan Jensen  
Kent Festvog  
Theodore Deschamp  
Ellen Nielsen

Elaine Page  
Rose Mary Lee  
Lynette Genre  
Peggy Hummel  
Dayle Odegaard  
John Hoiland  
Dale Branson  
Dale Norris  
Warren Genre\*  
Timothy Deschamp  
Perry Huber  
Robert Seiffert  
Donald (Doc) Stratton  
Toni Lunde  
Richard Thompson  
Richard Bauer  
Agnes Belisle  
Roger Nielsen  
David Zahn

**Class of 1970**

*"If you're going to climb,  
grab the branches,  
not the blossoms"*

Nancy Bangs  
Peggy Engh  
Stephanie Coliton  
Wanda Montgomery  
Cindy Rosendahl  
Don Cameron  
Rip Rasmus  
David Todd  
Karen Hahn  
Judith Grann  
Annette Haugen  
Rick Carlson  
Mike Stratton  
Julie Neese  
LaVonne Nielsen  
Donna Lesmann  
Dean Strand  
Bradley DeMars  
Keith Berentson  
Bill Deschamp

**Class of 1971**

*"I will go where there is no  
path and leave a trail"*

Rosalyn Martin  
Tim Sisk  
Paul Mattern  
John Moum  
Dwight Fields  
Kenneth Stavheim

Carol Pederson  
Michael Jensen  
Glenda Sem  
Kevin Thompson  
James Nygaard  
Nancy Page  
Corrine Talcott  
Brian Nermyr  
Chester Houmann  
Dennis Huber  
Gary Ballantyne  
Vicki McKechnie  
Caroline Foltyn  
Wade Genre  
Gerald Hagen  
Don Wagner  
Debra Deschamp  
Diane Sisk  
JaNell Seiffert  
Ilene Zahn  
Barbara Hulse  
Barry Henderson

**Class of 1972**

*"Achieve today for no one  
is giving us tomorrow"*

Joan Ballantyne  
Marla Montgomery  
Debbie Hegdahl  
Kent Martinson  
Betty Baumann  
Lee Haugen  
Barbara Henderson  
Duane Stratton  
Bob Rasmus  
Dianne DeMars  
Dan Stratton  
Gerald Grann  
Rose Ann Loughman  
Harvey DeMars  
Craig George  
Glenda Kleespie

**Class of 1973**

*"Beware lest you lose the  
substance while grasping  
at the shadows"*

Kevin Martin  
Leslie Fields  
Cindy Lesmann  
Dean Hulse  
Stanley Heth  
Debbie McKechnie  
Debra Lesmann

**Class of 1973 (Continued)**

Branda Mandigo  
Debra Matteson  
Steven Hagen  
Darlene Rauk  
Avis Hegdahl  
Barry DeMars  
Davy Sisk  
Linnie Foltyn  
Layton Foltyn  
Mary Berentson  
Cindy Neff  
Dawn Conway  
Vandy Wagner  
Keith Martin  
Tom Nielsen

**Class of 1974**

*"Life is full of unknown  
tomorrows and some beautiful  
yesterdays; but today is  
what we must live for"*

Dave Forde  
Greg Mattern  
Peggy Lesmann  
Jeff Aalund  
Joop Anemaet  
John Arden  
Pam Baumann  
Coleen Carlson  
Steve Carlson  
Terry DeMars  
Iku Eguchi

Janice Haugen  
Tim Henry  
Rick Ingh  
Steve Heth  
Mike Matteson  
Mike McCann  
Ed Page  
Joan Rasmus  
Norma Roll  
Brad Sandy  
Wade Sivertson  
Judy Stratton  
Anita Zahn



# ATHLETICS

Athletics as always been an important part of the extra-curricular activities in Westhope High for both boys and girls and the town has as always been most generous in its support, both financially and in attendance at events. In the early years, baseball and track were the predominate sports with football organized in 1921 when a field was laid out. Basketball was played by both boys and girls but because of lack of facilities it was evidently quite a different game than what we are used to. Vacant buildings were used for gyms until the gym was built in 1938. After that, basketball became a major winter sport and both boys and girls had regular seasons and tournaments until 1952 when girls basketball was dropped. The boys basketball teams went to the State Tournament in 1946, 1949, 1950, 1954 and 1955 and were the Class C State Champions in 1954. They were also in Regional Finals many times plus Champs of County Tournaments, Mohall Invitational Tournaments and District several times over the years. Football has been played on and off over the years, at times dropped because of lack of towns having teams. 1939-40 was declared the Golden year in sports, with trophies won in football, basketball, track and baseball. In 1960 a football team was again organized after several years absence and the next few years developed into a strong team with 40 straight wins by 1968. The track teams have also been very strong over the years, being active in Play Day activities and track meets, several times qualifying for State Meets and in 1953, a two-man team took third in the State Meet. (Matthews and Henry)

Let us be very proud of our athletics while we take a quick review of highlights over the years:

- 1911-12 — Boys and girls basketball teams played Bottineau. Girls lost 8-7 and boys by larger score.
- 1912-13 — Rugby team organized.
- 1915-16 — Baseball is big sport.
- 1921 — Football field laid out. Mr. McLees as coach.
- 1921-22 — Girls baseball team defeated Antler.
- 1922-23 — Football team beat Rugby 6-0. Lineup was Meddaugh, Morwood, Menge, R. Page, Price, F. Page, Matthews, Hilts, Zeitler, Aubert and McDougall.
- 1923-24 — Basketball in Evans Gym, exciting winter sport. Boys lost to Bottineau 23-19, beat Souris 14-7 and won from Rugby 19-18 in one of fastest games of season. H. Stone, L. Stone, R. Page and L. Morwood among stars.
- 1925-26 — Annual football banquet. Dr. Hughes coach. Six took part in State Track Meet: Rorvig, Elson, M. Lodoen, Patterson, King, Walker, L. Stone.
- 1926-27 — Marie Nesting heads Athletic Association. Max Schroeder is V.P., Blanche Fletcher is Sec. and Bill Munn, Treas. Boys took second in Devils Lake Track Meet.
- 1931-32 — Football boys won from School of Forestry, 6-0.
- 1933-34 — Placed first in County and District Play Days.
- 1935-36 — Six man football organized.
- 1938-39 — New gym built — six man football team won District Tournament.
- 1939-40 — Bottineau County Consolidated Tournament held here, big crowds. Over 700 at finals. Declared Golden Year in Athletics with eight trophies in four major sports.
- 1940-41 — WHS first in County Track Meet.
- 1941-42 — Six man football entered State Tournament but lost first game.
- 1943-44 — Girls won Bottineau basketball tournament and district event went to the finals.
- 1945-46 — Basketball boys champs in District and Regional, lost first game in State Tournament.

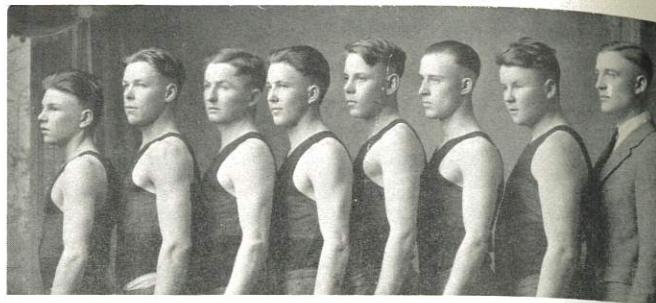
## ATHLETICS (Continued from page 9)

- 1946-47 — Sioux won County Track Meet, Duane Berg tied for high point man.
- 1947-48 — WHS beat Willow City for County champs in basketball, over 800 attended final event. Girls won third in District.
- 1948-49 — Sioux basketball team won District Tournament but lost in State. Jensen and Bryson made all-district team.
- 1949-50 — Bottineau County second and first in District in Basketball. Went to State and took third.
- 1950-51 — Took second in Bottineau County Basketball Tournament.
- 1951-52 — Again took second in Bottineau County Basketball Tournament.
- 1952-53 — Sioux won District Crown but lost a heart breaker in Regional to Willow City
- 57-56. Took first in Mohall Invitational Tourney. Three man track team won Bottineau County Track Meet: Matthews, Henry and Bryson.
- 1953-54 — Basketball team was a winner, won County, District and Regional. Were Class C State Champs by defeating Osnabrock 66-46. Don Schultz, coach. Five first stringers have played together since grade school days. Newsmen predicted Westhope could beat Class A Champs. Two man track team: Matthews and Henry, took third in State Track Meet. Played Brandon in basketball, after first four minutes the score was 17-0 for WHS. MSTC Night Track Meet took third place: Henry, Matthews, Lodoen and Bryson.
- 1954-55 — Basketball team won District and Regional Tournaments and went to State as defending champions but lost first game to Hope.
- 1956-57 — Class B Athletics this year
- 1957-58 — Won third in District Basketball Tournament
- 1960-61 — Football team again after several years absence: LaRoi Robertson, coach.
- 1962-63 — Football team had 7-2 record. Basketball team won Newberg Invitational Tournament.
- 1963-64 — Souris River Conference Champs in football. Basketball team won District Tourney but lost to Velva in Regional 54-51. Won North Central Conference Track Meet with 120 points.
- 1965-66 — Souris River Conference Champs again. Won District Basketball Tournament but lost to Kenmare in Regional.
- 1967-68 — Sioux won Souris River Conference with 8-0 record, 23 game winning streak.
- 1967-68 — Won Souris River Conference again, 32 straight wins for the Sioux.
- 1968-69 — Tri-Champs in Souris River Conference, 40 straight wins for WHS.
- 1970-71 — Girls basketball again this year. Football team had 4-4 record.
- 1971-72 — Track team won Souris River Conference. Won District Cheerleading and Pep Squad trophy.
- 1972-73 — Football team had 3-4 record. Most valuable players are Dean Hulse, Tim Henry and Davy Sisk.
- 1973-74 — Sioux won Regional Basketball Tournament and entered State Tourney but lost to Tioga in opening round. Track team won Souris River Conference, Berthold Invitational and North Central Conference Track Meets.



## 1922 BASKETBALL

Left to right:  
Lawrence Mor-  
wood, Fred Page,  
George Mc-  
Dougall, Tom  
Cooper, Ted  
White, Chester  
Price, Bill Lackey  
and Coach Kelly.



## 1924-1925 BASKETBALL

Back row: Pix-  
ley, O. Jensen,  
Coach, B. Nesting,  
H. Jensen.

Front row: A.  
Baumann, L.  
Stone, P. Rorvig,  
C. Macrwood.

## 1924-1925 GIRLS BASKETBALL

Left to right:  
Doris Ferguson,  
Coach Eilson, Isa-  
bel Anderson,  
Blanche Town-  
send, Edna Peter-  
sen, Grace Reyn-  
olds, Marian  
Campion, Helene  
Petersen.



Football Team — 1928.



## 1928-1929 GIRLS BASKETBALL

Back row, left to right: Therese Nesting, Vivian Helgersen, Lillian Talcott, Bernice Colliton,  
Miss Dorothy Bush - Coach.

Front row: Florence Elston, Helen Lambe, Eleanor Schroeder, Marie Haugland, Florence  
Chapman.



## 1946 GIRLS BASKETBALL TEAM

Back row: Virginia Koster, Marlene Christensen, Ruth Sandy, Norma Witteman, Jean  
Stratton, Miss Smestad - Coach.

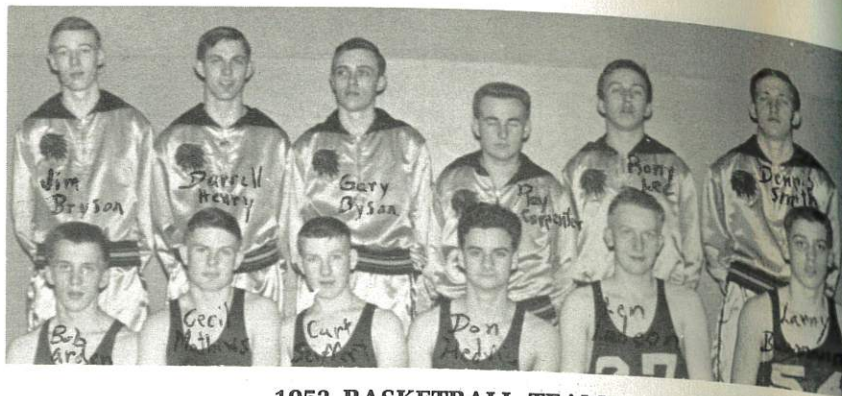
Front row: Violet Deschamp, Eleanore Stratton, Donna Meddaugh, Hazel Koster, Ardith  
Anderson, Evelyn Jacobson.



## 1948 1949 Basketball Team

Back row: Bob  
Green, Raymond  
Lodoux, Lowell  
Christensen, Coach  
Max Allen, Doren  
Christensen, Jack  
Jensen, Jerry Page,  
Don Fraser, Bob  
Bryson.





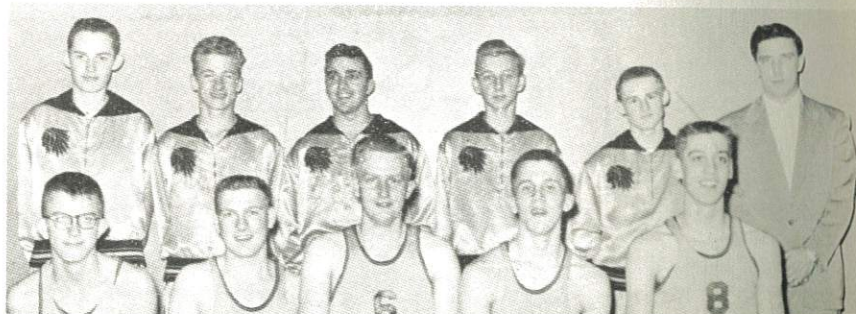
**1953 BASKETBALL TEAM**  
(Missed State By One Point)

Back row: Jim Bryson, Darrell Henry, Gary Bryson, Ray Carpenter, Ronnie Lee, Dennis Smith.  
Front row: Bob Arden, Cecil Allen Matthews, Curt Seiffert, Don Hegvik, Len Lodoen, Larry Baumann.



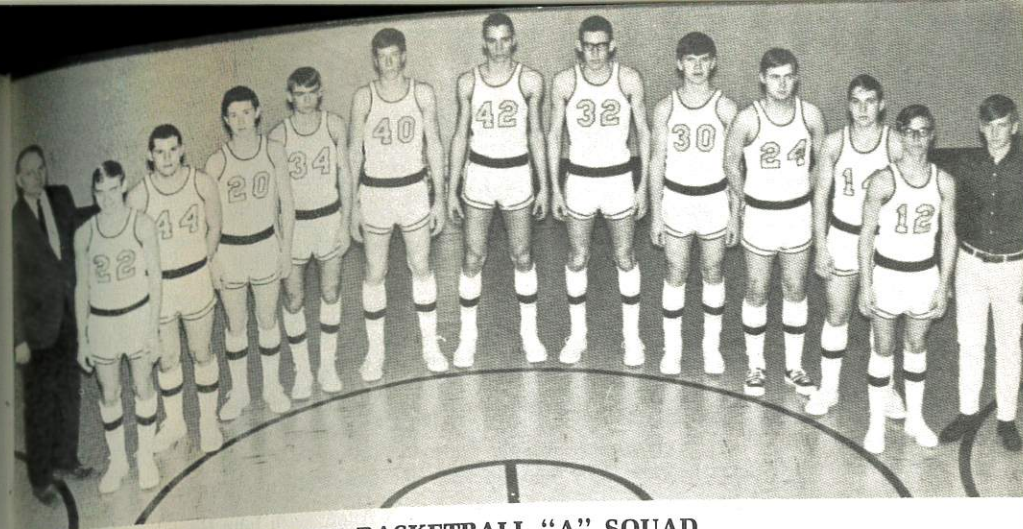
**RETURN HOME WITH STATE BASKETBALL TROPHY — 1954**

Back row: Cecil Allen Matthews, Len Lodoen, Darrell Henry (holding trophy), Bob Arden.  
Front row: Tom Soland, James Brown, Curt Seiffert, Don Hegvik, Larry Baumann, Ronnie Lee.



**1955 BASKETBALL TEAM**

Back row: Donovan Reinke, Jim Hegdahl, Bob Krogen, Jerry McKechnie, Larry Carpenter, Don Schultz - Coach.  
Front row: Gordon Henry, Curt Seiffert, Len Lodoen, Bob Arden, Larry Baumann.



**1967 BASKETBALL "A" SQUAD**

Coach Hedstrom, B. Neese, D. Marcotte, K. McLean, L. Ballentyne, M. Martin, D. Jensen, R. Norris, B. Martinson, K. Festvog, M. Neese, D. McKechnie, Assistant Manager D. Odegard.



**1967**  
"A" Squad  
Cheerleaders

**1968 BASKETBALL TEAM**

D. Stratton, B. Neese, T. Deschamp, N. McLean, L. Ballentyne, K. Festvog, B. Martinson, M. Martin, D. Jensen, M. Neese, D. Marcotte, D. Marcotte, T. Deschamp, D. Todd, Mr. Hedstrom, B. Deschamp, D. Odegard.





## MUSIC

The influence of the fine music work done in Westhope High School has been felt in many phases of life in Westhope, especially in club work and in our three churches. The music training and influence in our school has encouraged many of our alumni to make music a part of their adult career as band directors, vocalists, teachers and entertainers. We are justly proud of our musical history!!

Prof. Matthews organized a school orchestra in 1907 and in 1909 the Red and Gold Literary Society was organized, where music was a good part of the program. In 1916, Miss Jones, a first grade teacher, organized a glee club which won the district contest in 1919-20 and competed in the State Contest in Grand Forks.

The first band was organized in 1921 under the direction of Anton Kadlac and by 1922 had signed for a three-day engagement at the Bottineau County Fair. Despite hard times in the 1930s music flourished and WHS won District and County Playdays in 1934.

A school band was again organized in 1949 by Max Allen, with John Hegvik working with group shortly after. In the following years the band, chorus and individuals had outstanding ratings at County and District Music Contests. In the early 50s the band traveled to various Canadian towns during summer months to perform and in 1955 the band had 44 members. In 1953-54, a school orchestra was organized, "The Sioux Swingsters" and put on a dance for benefit of School Activity Fund. Members were: Larry Baumann, Len Lodoen, Cecil Matthews Jr., Curt Seiffert, Bob Arden, Marlene Weber, Barbara Helgersen, Janet Matthews, Alves Benthagen, Kathleen Kormann, John Hegvik and Don Mizera. Around that time the marching band took part in Minot Band Day, plus marching in parades in Westhope on July 4th and for the Landa 50th Anniversary, the latter under director of Cecil Matthews, Sr.

In 1957 music groups presented a fine Christmas program and in 1958 the chorus sang at the NDEA Convention in Minot. The band and groups received two highly superiors plus and 18 highly superiors in 1959.

In 1963, the 57 piece concert band went on a tour which included several Canadian towns. They played five concerts in three days, including a final concert at home.

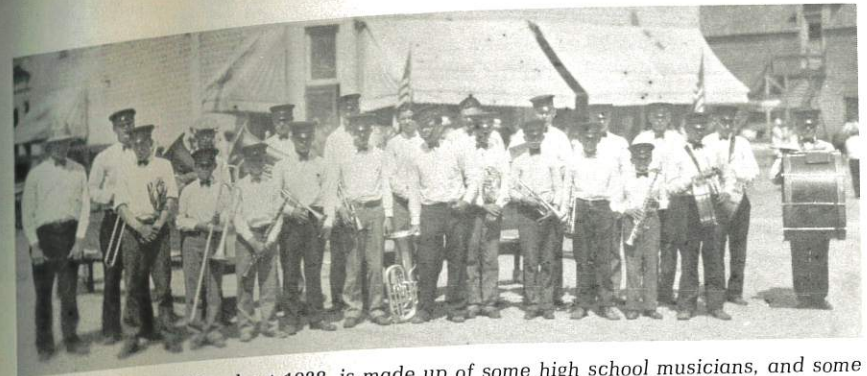
1964 saw WHS win 17 highly superior ratings in District Contest and 25 students were eligible to enter the State Contest. The marching band took part in Williston Band Day.

In 1967 the Westhope Stage Band made a big hit before the grandstand at the Bottineau County Fair and a "Pops Concert" and a musical "Swinging High" was presented.

WHS had several members qualify for Overseas Tours. In 1965, three members of WHS band: Ann Munn, Peggy Munn and Mary Ann Baumann were with the International Music Camp Tour which went to Europe and in 1967 David Todd was with the School Band of America on a month's tour of Europe. In 1968, he was a member of the All American Youth Honor Band on a tour of South America and in 1970, David toured Europe again with the International Music Camp Tour Band. In 1973 Lonnie Foltyn was selected for the American Ambassadors Band which toured several European countries and in 1974, Pam Baumann was chosen to participate in the International Music Camp Tour in Europe.

As an added incentive to develop good musicianship in the Westhope School and the John Philip Sousa Awards were made available in 1960. All senior band members are automatically eligible for this award and all the band members vote to select the most outstanding senior in instrumental music. The winners of this award are:

1960 - Barbara Baumann	1965 - Don Page, Jr.	1970 - David Todd
1961 - James Munn, Jr.	1966 - Marjorie Martin	1971 - Michael Jensen
1962 - Nancy Lee Matteson	1967 - Kathy Kline	1972 - Marla Montgomery
1963 - Cheryl Cossette	1968 - Susan Munn	1973 - Lonnie Foltyn
1964 - Linda Drake	1969 - Joel Johnson	1974 - Pam Baumann



The band, probably about 1928, is made up of some high school musicians, and some others with Tony Kadlac, at the left, as director. Probably at a summer celebration.



**TRIPLE TRIO IN 1952 OR 1953**

Left to right: Mae Ashley, Kathleen Kormann, Mary Brown, Barbara Helgersen, Betty Atkins, Alves Benthagen, Nancy Brown, Marlene Weber, Judy Matteson.



**GIRLS CHORUS — 1952-53**

Bottom row: Kathy Brown, Connie Seiffert, Sandra Hovland, Carol Sandy, Judy Damstrom, Helen Kormann, Bernice Hulse, Wanda Hanson, Bonnie Dixon.  
Second row: Doris Steinhaus, Dorothy Lee, Myrna Carpenter, Judy Rosendahl, Janet Matthews, Barbara Helgersen, Alves Benthagen, Mary Ellen Williams, Janice Steinhaus, Lois Ann Hawker.  
Top row: Mavis Hanson, Kathleen Kormann, Mary Brown, Patty Lee, Marlene Weber, Betty Atkins, Mae Ashley, Nancy Brown, Violet Zahn, Kay Jensen, Don Mizera - Director.





### 1968

Front row: B. Forschen, T. Lee, C. Rosendahl, P. Palmer, D. McKechnie, K. Martin, S. Munn, B. Hulse, K. Hahn, M. Montgomery, J. Neese, C. Talcott, L. Nielson, S. Jensen, D. DeMars, J. Hegdahl, L. Ballantyne, K. Kline.

Second row: N. Page, C. Foltyn, S. Colton, A. Haugen, V. Klokstad, S. Spencer, B. Baumann, L. Stratton, K. Johnson, H. Cameron, D. Todd, L. Haugan, D. Cameron, G. Ballantyne, R. Martin, J. Ballantyne, C. Olson, D. Matthews, D. Marcotte, D. Odegard, M. Martin.

Third row: D. Deschamp, D. Sisk, D. Deschamp, G. Sem, J. Seiffert, V. McKechnie, G. Hagen, D. Strand, J. Nygaard, P. Mattern, D. Floberg, J. Hoiland, W. Montgomery, B. Henderson, J. Johnson, D. Todd, L. Ballantyne, W. Genre, B. Hansen, P. Ingh, M. Jensen, D. Hahn, D. Glinz, J. Moum, T. Sisk, D. Jensen.

Fourth row: M. Mattern, B. Martinson, E. Page, N. Bangs, C. Houman, B. Nermyr, M. Stratton, K. Martinson, Director Mr. Lindquist.



### STATE VOCAL GROUPS — 1968

The girls' Triple Trio consisted of: Faith Striker, Kristy Joynson, Debby Matthews, Peggy Engh, Susie Munn, Barbara Forschen, Diane Townsend, Connie Striker and Cindy Rosendahl. They went to state with the selection "Green Cathedral."

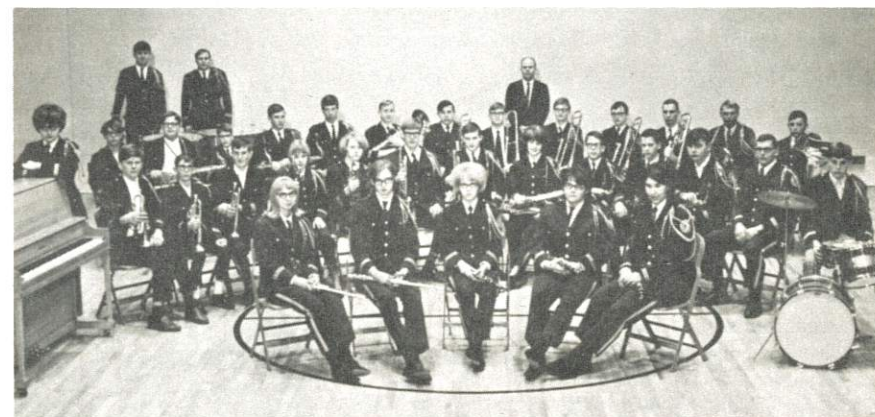


Many Westhope High music students took part in the International Music Camp over the years.

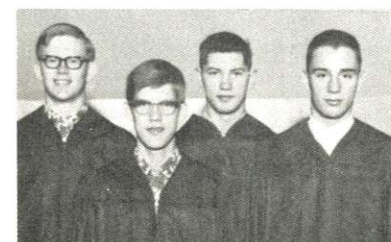


### 1967

Brass Sextet — David Jensen, Mike Jensen, Larry Ballantyne, Kathy Kline, Tim Matthews, Dave Todd.

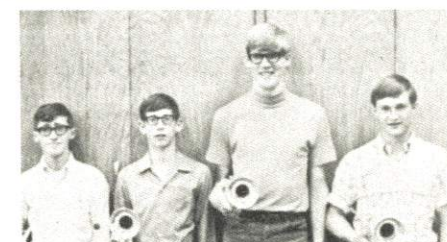


### STAGE BAND — 1968



### 1967

Boys' Quartet: Joel Johnson, David Jensen, Tim Matthews, Terry Klabo.

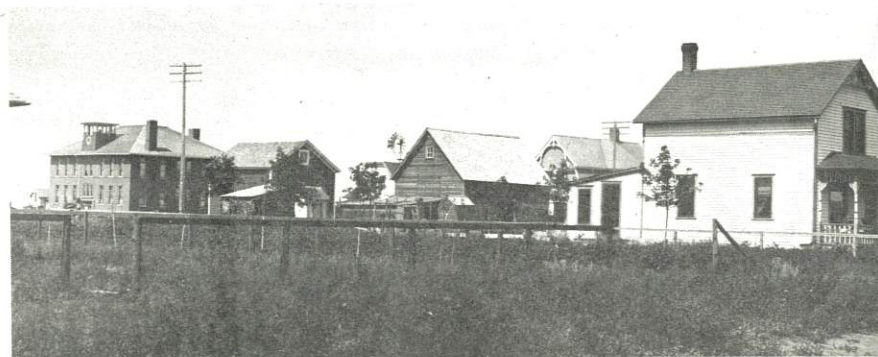


### 1969

The trumpet trio and quartet both received an I rating at Jamestown. Gerald Hagen, Dennis Huber, Joel Johnson and Dave Todd were in the quartet and Dennis, Joel and Dave were also in the trio.



# WESTHOPE SCHOOL HISTORY



A view of the old school, taken looking northwest, probably in the fall of 1907. Notice the belfrey has not been completed.

1907 — School orchestra organized under direction of Prof. N. W. Matthews, F. N. C. N., Gold Medalist and late Professor of London, England, College of Music.

1908 — Westhope and Bottineau teams debated on the question "Resolved That Prohibition is better for North Dakota than high license." On the Bottineau team were Gordon Acheson, Misses Woodward and Finleyson. The Westhope debaters were: Henry Warner, Tom Nielsen and Donald Trimble. Westhope sponsored a lyceum course for 1908-09.

1909 — At the start of the 1909 school term 23 students were enrolled in high school and 14 in the eighth grade. Total enrollment at the close of the year was 222. The Red and Gold Literary Society was organized with Henry Warner, President; Donald Trimble, Secretary; Ester Johnson, and Leota Trimble was the Treasurer. Miss Charley and Ruby Conquergood, Critics and Catherine McDougall and Mary Walker, Counselors. The first graduating class numbered two, Donald Trimble and Winthrop Warner.



Don Trimble  
First Graduate of  
Westhope High

1910 — At the start of the term enrollment was: high school, 20; grades, 130. Attendance will increase when threshing is over. Among the social events of the season, the "Bum" given by the newly elected officers of the literary society was easily the feature.

1910-11 — T. D. Acheson has been absent for two weeks now and we all wonder what has happened to our "stump speaker." The debating team, Leota Trimble, Warner Patterson, Henry Warner Jr., together with Prof. Barger were honored by the Commercial Club following their victory over the Bottineau team.

1911-12 — Lester Frazier is manager of the basketball team. Both the boy's and girl's teams played Bottineau. The girls lost 8 to 7 and the boys by a somewhat larger score. A graduating class of four, the largest so far in the history of the school.

1913-14 — The enrollment as of May 1 is 231 which is 36 more than last year. Arbor Day was spent planting trees, cleaning up the school yard and overhauling the furniture.

In North Dakota educational costs were \$21 a year per school pupil. F. A. Schrader is the new school superintendent. Three years of Latin, Domestic Science, Manuel Training, Botany and Zoology are among the high school courses offered. The new McDougall school is now in use. Some of the grade rooms are extremely crowded. New fire escapes have been installed and in drills the record for emptying the school building is 48 seconds.

1914-15 — Fred W. Graff is the new school superintendent. Both Latin and German are taught this year. The total enrollment is 225. New playground equipment is added.



Gladys Baumann's birthday party at her aunt and uncle's home — Mr. and Mrs. A. N. Baumann.

Back row, left to right: Frances Drake, Ruby Alf, Gladys Baumann, Marian Cameron, Mamie O'Conner, Laura Trimble, Virginia Zirkle, Louise Page.

Front row, left to right: Collin Seiffert, George McDougall, Fred Page, Doyle Zirkle, Ralph Meddaugh (partly hidden), Tom Cooper, Ross Cooper. Little boys are Albert and Win Baumann.

1915-16 — High school enrollment is up to 38 and baseball is the big sport.

1916-17 — Miss Jones has organized a Glee Club. Basket Social at the McDougall school. The Literary Society gives regular weekly programs as an evening feature at the school.



BASEBALL TEAM ABOUT 1917

Back row, left to right: Harry Klinert, Arthur Morwood, Harvey Meddaugh, George Sandy, Laurence Samuelson.

Front row, left to right: Collin Seiffert, Doyle Zirkle, Ralph Meddaugh, Garnet Seiffert, Ross Cooper.



1917-18 — Harold Wakefield is principal. Other teachers are Nellie Feetham, Luelle Marcotte, Vida Thompson, Amanda Wagle, Edna Waterman, Nellie Hrabe, Bertha Corning. A bond issue in the amount of \$4,500 was passed for the purpose of putting in a new steam heating plant to replace the hot air system which had proved unsatisfactory. A record high school enrollment of 51.



Domestic Science  
1916-1918.

Manual Training  
1916-1918.



1918-19 — E. O. Durocher the new superintendent with Mrs. Durocher principal. The 1919 graduating class put on a play "Her Honor the Mayor" the cast being Garnett Seiffert, Arthur Morwood, George McDougall, Myra Irving, Evelyn Drake, Elsie Townsend, Amy Nelson, Emily Hawher.



Standing: Gella O'Conner, Irene Nine, Rena Bebo, Faye Trimble, Miss Humes (teacher), Joyce McDougall, Alice Lowe, Merle Seiffert, Loretta Townsend, Mabel Trimble.

Sitting: Vier Trimble, Brenton Meade, Harry Meade, Wilbur Conquergood, Charlie Fowipler, LaFrone Barton.



Westhope High School — 1916-1918.

1919-20 — The Girl's Glee Club won the district contest at Bottineau and will compete in the state contest at Grand Forks.

1920-21 — For perhaps the first time the district advertises for bids to transport school pupils to the town school. R. W. McLees has been hired as school superintendent for the 1921-22 term.

### MCLEES HEADS SCHOOL IN 1921

A complete new staff has been hired for the Westhope school and an additional teacher hired which will make the staff the strongest teaching force the Westhope school has ever had. R. W. McLees will head the school as superintendent and will teach science and math. J. R. Kelly, principal, and teaches history and English. Anton Kadlac, music, French and social studies. Percy Grimsgaard, normal training, commercial and athletics. Grade teachers are: Arthur Morwood, Edith Ralston, Bessie Thompson, Blanche Wyman, Ida Clark.

The 1921 school term opened with a record high school enrollment of 66 and 130 in the grades. A football field was laid out. The first high school band was organized.

Two Literary Societies organized under the direction of Mr. Kelly with Mildred Drake and Theodore White as temporary captains. They were organized as the Alpha and Omega and Delta Phi and competition between the two societies during the year was keen.

All in all there seems to be great school spirit and the whole school has taken on increased vitality.



Senior  
Picnic  
1922



1922 — The boy's and girl's basketball teams both played games to open the post-Christmas season. On the girl's team were: Margaret Warner, Blanche Townsend, Marie McPhee, Olive Huston, Edna Elrod, Ruth Ferguson, Helen Aubert. The Junior Class put on the play "Mrs. Briggs of the Poultry Yard." A fire at the school from burning sparks setting the roof on fire. The school band made their public appearance at the Farmers Institute, and gave their first formal concert on April 21. Excitement ran high as the boy's basketball team defeated Bottineau 11 to 8. The high school debating team is made up of Mildred Drake, Ruth Ferguson and Ted White with J. R. Kelly as coach. They have won several debates. A graduation class of 14 is the largest to date. The school band signed to play a three day engagement at the Bottineau County Fair.



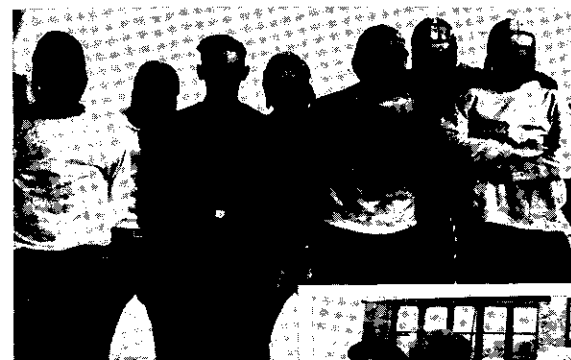
This 1923 photo shows track stars that it is believed went to the state meet at Grand Forks. Front row, left to right: Fred Page, J. R. Kelly - principal and coach, Chet Price. Back row, from the left, Clark Aubert, Lawrence Morwood, Ralph Page.

1922-23 — The football team won their opener against Rugby 6 to 0. On the lineup for Westhope were: Meddaugh, Morwood, Menge, R. Page, Price, F. Page, Matthews, Hiltz, Zeitler, Aubert and McDougall. WHS entered an orchestra, male quartet band and several individual numbers in the district music contest. The Junior Prom, held at the Community Hall, was a gala affair with 36 couples attending. Play Day was held at Westhope.



Left to right: Blanche Fletcher - Albert Pixley; Marian Campion - Oren Jensen; Grace Reynolds - Cecil Matthews.

1923-24 — High School enrollment is 66. Westhope beat Bottineau 33 to 13 in football. Oren Jensen elected captain of the 1924 team. The Junior class, assisted by a couple of seniors, put on the play "Nothing But The Truth." C. N. Morwood has had charge of high school music and took a group to Minot for the district meet.



Football Team  
1925



Boys at Game  
at Mohall  
1925

1924-25 — W. A. McDougall is new school superintendent and Oliver Eilson is principal. Westhope trounced Rugby 26 to 0 in a game on the local football field. The debating team, Misses Marie Simon, Helene and Edna Peterson, with Dan Ferguson as alternate lost a close decision to Leeds. Supt. McDougall accompanied them. Westhope won first place at Play Day at Landa. WHS will be a first class high school and is coming under Smith-Hughes Act.



**1925 TOUGHIES**

Albert Pixley, Charles Morwood,  
Paul Rorvig.



Edna Peterson, Blanche Fletcher, Helene Peterson, Madeline Durnin, Marie Simon, Ethel Vivian, Marie Nesting.



1925-26 — Westhope grid stars defeated Bottineau 31 to 0. H. K. Brown was the superintendent. We won over Bottineau in the County Play Day. Six took part in the State Track Meet. They were Rorvig, Harold Elston, Mylo Lodoen, Willard Patterson, Earl King, Lawrence Walker and Lloyd Stone. The latter also took part in declamation.



Left to right:  
Grace Reynolds  
Marian Campian  
Irma Barr  
Doris Ferguson



The musical "Windmills of Holland" in 1923 by eighth grade class under direction of Mrs. Condit was presented three times with great success.



Play Day 1927  
shows a group  
of girl athletes.  
Maybe a relay  
race.



Robert Cameron

Oscar Jensen

Elena Simpson

Theodore Stanton

Lloyd Stone



Dagmar Jensen



Elizabeth Ledoux



H. K. Brown



Madeline Deschamps



Marian Campian



Mylar Hawker



Raymond O'Connor



Clarence Lundy



Harry Jensen



Mylo Lodoen



Clarence Lodoen

Westhope, N.D. H.S. Class. 1926.



Allen Bell



Maxwell Schneider



Clayton Page



Marie Neefing



Jack Sisk



Albert Bauman



Albert Holey



Martha Henderson



Blanche Fletcher



Isabelle Anderson



H. K. Brown



Berdis Jensen



Doris Mathison



Florence Rich

Westhope.  
H. S.

Class.  
1927.



Arthur Page



Harold Elston



Earl King



Grace Reynolds



Reginald Campian



Paul Rorvig



Lloyd Stone



1926-27 — Grades and high school present fine Christmas program. The PTA has reorganized. Blanche Fletcher won first in an essay contest sponsored by the Masonic Lodge. Our boys took second in a track meet at Devils Lake. On the WHS team were Earl King, Clayton Page, Max Schroeder, Paul Rorvig and Jack Sisk.



Band Uniform about 1925  
Isabelle Anderson



### WESTHOPE HIGH GRADUATES IN MINOT 1927

Back row: Lucille Drake,  
Ellen Madsen.

Front row: Madeline  
Deschamp, Grace Reynolds,  
Marian Campion, Ethel  
Vivian.



Play Day 1927. The three athletes in front are Clayton Page, Earl King and Paul Rorvig. In the background are, at the left, H. K. Brown, school superintendent and Mr. Hanson, school janitor.



### SCHOOL CHUMS AROUND 1927

Devern Rosendahl, Doris Mathison, Mrs. Alice Baumann, Marie Nesting, Isabelle (Bid) Anderson.



### HIGH SCHOOL GALS

Marie, Dagmar, Grace Reynolds, Helene and Edna Peterson.

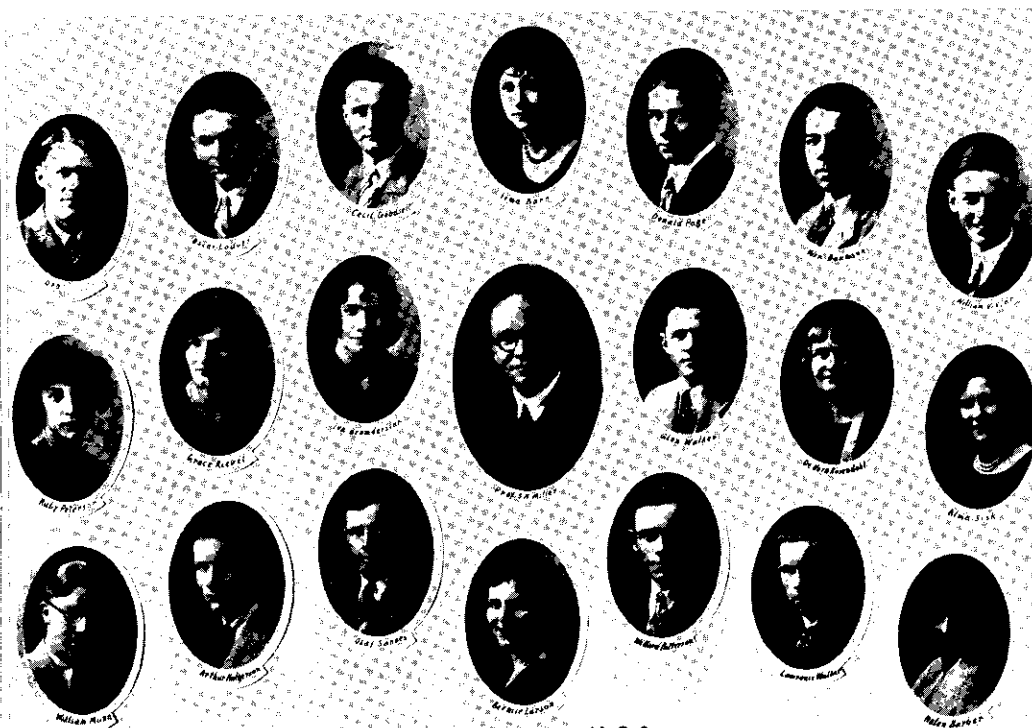
1927-28 — S. H. Miller is new superintendent with Milton Bratrud, principal and band. High school enrollment 71. Football men who received letters for the 1927 team were Glen Walker, W. Baumann, Oral Stone, Albert Drake, Clifford Colliton, Wm. Munn - Mgr., Wm. Barber, Bernard Nething, Donald Page, Olaf Sannes, Erwin Jensen, Lawrence Walker, Arthur Helgerson, Willard Patterson.



### 1928-1929 BASKETBALL

Left to right: Erwin Jensen, Ed Rorvig, Bernard Nesting, Cliff Colliton, Rollie Walker, Albert Drake, George Bell, Coach Mr. Woodside.

1928-29 — Members of the boy's basketball team to receive letters were Erwin Jensen, Cliff Colliton, Ed Rorvig, Albert Drake, Bernard Nesting, Rollie Walker, George Bell. On the girl's team letters were received by Florence Elston, Theresa Nesting, Marie Haugland, Florence Chapman, Eleanor Schroeder, Lillian Talcott, Helen Lambe, Bernice Colliton.



Westhope N.D.

H.S. Class. 1928.





1929-30 — The school treasurer's statement shows receipts of \$22,131.00, and expenditures of \$19,906.00 of which \$11,553.00 went for teachers' salaries, fuel and janitor services \$2,201.00, transportation \$1120.00. This was for the year ending June 30, 1929. The operetta "Sailor Maids" directed by Miss Akin was a great success.



Back row, left to right: Miss Hennesey, Eleanore Schroeder, Bernice Colliton, Theresa Nesting, Julia Kelly, DeVerne Rosendahl.

Wood and Mike Lodoen  
Graduation — 1926.

Front row: Lillian Talcott, Julia Poxley, Helen Lambe.

1930-31 — H. J. Ganble is the new school head. Miss Gilbertson and Miss Rotherth are also new to the staff. The school is publishing a newspaper within the columns of the Standard with Diris Kelly editor and Inez Rogers, Ruth Kelly, Donald Drake, Eleanor Egger, Rosalie Jensen and Marie Deschamp on the staff.

WHS Alumni met during the holidays to form an association. Mrs. Greene was elected president, Marie Nesting vice-president, Isabel Anderson was secretary-treasurer. They held a banquet December 30.

1931-32 — High school enrollment is 66. The grade children presented the operetta "The Land of Dreams Come True" which was a real success.



#### EIGHTH GRADE CLASS IN 1933

Back row: Dorothy Gilmore, Bill Ruelle Jr., Bette Mathison, Milton Condit, Ellen Madsen (Teacher), Norma Bangs, Bob Baumann, Mabel Ledoux, Bob Kjelmeyer, Pauline Leithoff and Jim Flynn.

Front row: Kenneth Nesting, Rose Cossette, Harold Jensen, William Lundy, Unidentified, Alwood Berg, Bertha Deschamp, Walter Egger, Annabel Hale, Unidentified, Doris Zeitler, William Egger, Peterson, Malcom (Bud) McKechnie.





### SENIORS — 1933

Front row: Pauline Nermyr, Mederese Lodoen, Eleanore Egger, Gladys Deschamp, Margaret Matteson.  
Back row: Hazel Acheson, Edna Christensen, Anna Lodoen, Vivian Trimble, Rosalie Jensen, James Borsheim, Irene Talcott, Elizabeth DePlace, Genevieve Lambe, Lois Baumann, Lucille Schroeder, Mr. Squire (Instructor).



### JUNIORS — 1933

Row one: Grace Reynolds (Instructor), Ken Helgersen, Antionette Gendron, Lucille, Beryl Larson, Helen Albright, Rex Wells.  
Back row: Frank Stone, Stella Gendron, Edna Lunde, Viola Jensen, Walt McKechnie, Eunice Strand, Robert Schroeder.



### SOPHOMORES — 1933

Row one: Frances O'Conner, Helen Talcott, Irene, Helen Bangs, Lillian Peterson.  
Second row: Marie Deschamp, Elphie Ledoux, Kathryn Mathison, Harold Hestikind, Geneva Chapman, Elaine Crum.  
Third row: Elmer, Icel Rodgers, Velva Matthews, John Egger, Charles Drake, Louise Barr, Richard Peterson, Oral Stone, Instructor.



### FRESHMAN CLASS — 1933

Row one: Lesley Madsen, Barbara Larson, Pattie, Ray Wells, Marion Huber, Leo Fulwiler, Harold Walker.  
Row two: Dale Fitzpatrick, Louise Breasher, James Munn, Lynn King, Florin, Gerda DePlace, Edith Armer, Lawrence Rosendahl, Alston Kennedy, Mrs. Squire, Instructor.

1932-33 — G. R. Squire will be the new school superintendent with Mrs. Squire, Oral Stone and Grace Reynolds comprising the balance of the H. S. staff. Grade teachers are Ellen Madsen, Madeline Deschamp, Ruth Helgersen, and Lillian McLeod. Total enrollment is 187. Oral Stone is football coach and Mrs. Squires is organizing the band. Kuroki school graduated the first high school graduating class of five.

1933-34 — Students publish an outstanding newspaper each week thru the columns of the Standard. Miss Florence Elston is a new high school teacher on a part-time basis with salary paid thru CWA funds. School plays, programs and entertainment continue despite hard times and the depression. Students are more and more providing their own entertainment and helping in community recreation. The Westhope school won first in both District and County Play Day events, leading by a wide margin in track, music and declamation.

1934-35 — All teachers have been rehired but salaries have been cut \$10 to \$15 a month. \$3000 in relief funds from the federal government enabled the district to finish the fiscal year with a deficit of only \$900 and few outstanding warrants. The old gym, known at one time as the Evans Gym, but later purchased by the school district, has been torn down as an FERA project. It had not been used in a couple of years and was in bad shape. Hopes are held out that there may be a new gym built — some day.



Senior Class Play — 1936. "Yimmie Yonson's Yob."



1935-36 — John J. McPherson heads the high school staff. Mrs. Miller and Oral Stone complete the HS staff. An editorial in the Sioux Battle Axe notes that during the past four years Westhope has not had the facilities required for a first class high school because of the lack of a gymnasium. Steps are being taken to convert a downtown vacant building into a gymnasium. None of the present high school seniors have had the opportunity to play any basketball, except a few who played on grade teams. Practice was started in the "new-old" gym after the Christmas holidays with Oral Stone as coach.



**SIX MAN FOOTBALL 1938**

Fulwiler, Howery, Egger, Williams, Newton, Jensen. (Not in order).



**GIRLS TRIO 1938**

First place winners in the county in 1938 were Gladys Jensen, Jeanne Findlay and Dolores Bangs.

Basketball  
Team  
1938



**1938 GRADUATES**

Front row, left to right: Doris Zeitler, Marjorie Page, Lillian Hagen, Jean Hale.  
Second row: Luella Arden, Eleanor Crum, Doris Thomas, Jeanne Findlay, Goldie Trimble, Keith Williams, Mr. Sausker.  
Third row: Dolores Bangs, Jarold Fraser, William Egger, Harvey Jensen, John Fulwiler, Charles Condit, Kenneth Nesting.

1937-38 — A WPA project will connect the school with the city water reservoir via a special line to the firehall. R. C. Wagner will be new school superintendent and Henry Sausker has been hired as principal. The Westhope school again has a first class rating. Betty Arden has been crowned queen in connection with the school Carnival. The Carnival was a success with a total gross of \$184 and expenses of around \$100. The Commercial Club has named a committee to work with the school board for a new school gym as a WPA project.

1938-39 — Henry Sausker is the new school superintendent. A Christmas pageant "Star Gleams" was given by high school and grade students. The spelling, typing and declamation contest held at Westhope drew over 200 entries, representing 11 towns, seven grade schools and a number of rural schools. The school board has been advised by the state department that next fall they must drop to six teachers due to a financial crisis that is limiting state aid. At first word was they must drop to five teachers but pressure by the local board resulted in the change to six teachers.



**FRESHMAN CLASS IN 1938**

Front row: Murray Selk, Guy Chapman, Harvey Egger, Opal Kormann, Gloria Selk, Smith, Frank Lundy, Ardell Olson.  
Back row: Orval Deschamp, Albert Nielsen, Oscar Hulse, Frode Jespersen, Ivan Neilsen, Bette Mathison, Morie Jensen, Unidentified, Lois Kelly, Luella Marburger (Teacher).



**1939**

Back row: Wally Lundy, Gayle Robertson, Dorothy McKechnie, Palmer Nynmer, Garford Howery, Robert Page, Glenn Jensen, Henry Sausker (Class Advisor).  
Front row: Dorothy Linesay, Lucille Dixon, Margaret Smith, Frances Kelly, Harold Sannes, Lyle Sisk.



1939-40 — Don Trimble, first graduate of WHS, spoke at the Alumni banquet. The Bottineau County Consolidated Basketball Tournament was held in the new Westhope gymnasium. The grades put on the operetta "Adventures of Tom Sawyer" with Virgil Olson as Tom. Others in the cast included Jerry Lundy, Patty Keyes, Janice Meddaugh, Shirley Jensen, Duane Hulse, Bobby Jensen, Ruth Frazer, Robert Robertson, Ione Christensen, Earl Parker, Wallace Hulse, Wardell Lee, Garnett Matteson, Tommy Coleman, Robert Rosler, Gordon Goodwin, Harvey DeMars, Robert White, Marvin Floberg, Gladys Flober. Coached by Miss Wyman and Miss Pederson.

1940-41 — Opening day enrollment was 86 in the grades and 46 in high school. William Hubbard is the new principal and coach. The high school had an entry in the County One Act Play contest held at Russell. County music festival was a big event. WHS won first in the County Track Meet.

1941-42 — School opened with Hayden Williams as superintendent and John Sorum as principal and coach. Enrollment 47 in high school and 108 in the grades. Playing "Jacob Comes Home" Westhope players won first in the County One Act Play contest. Patty Keyes and Betty Dixon were named on the All-County Cast. Hayden Williams was director.

1942-43 — There were 98 in the grades and 52 in high school on opening day. Hayden Williams has resigned as school superintendent to accept a civil service position instructing aviation cadets. Henry Sausker, County Superintendent of Schools, has taken over as superintendent. In March Mr. Sausker decided he could no longer carry this double load and the board arranged with Father Neva and Reverend Carey to take on the school duties jointly.

1943-44 — John Sorum is the new school superintendent. Roberta Henry was crowned queen at the school Carnival. The school netted \$330 on the Carnival. Nine high schools took part in the One Act Play contest at Russell. Westhope was second in one category. Dicken's "Christmas Carol" was a feature of the school Christmas program. Eleven schools competed in the District Basketball Tournament in the Westhope gym. In the district event the girls won their way to the finals. Out of 11 regular games and two tournaments they lost only two games.



#### 1943-44 BASKETBALL TEAM (GIRLS)

Back row: Betty Sorum (Coach), Eleanore Stratton, Janice Meddaugh, Merlyn Rosendahl, Nina Hulse, Alice Parker.  
Front row: Hazel Koster, Donna Meddaugh, Roberta Henry, Donna Henry, Donna Sandy, Lorraine Rosendahl, Sylvia Downs.

1944-45 — Westhope players won first in the County One Act Play contest with "Light to Glory." Bill Baumann, who played the leading role, was named outstanding boy actor.



#### 1945-1946 BASKETBALL TEAM

Back row: Terry Smith, Rod Jensen, Ed Ashley, Bob Jensen, Coach Hunter.  
Front row: Don Moum, Bill Baumann, Jack Page, Duane Berg, Harvey DeMars.



In 1944, the first kindergarten was started with Mrs. Ethel Jensen as teacher. This was the first kindergarten in the county.

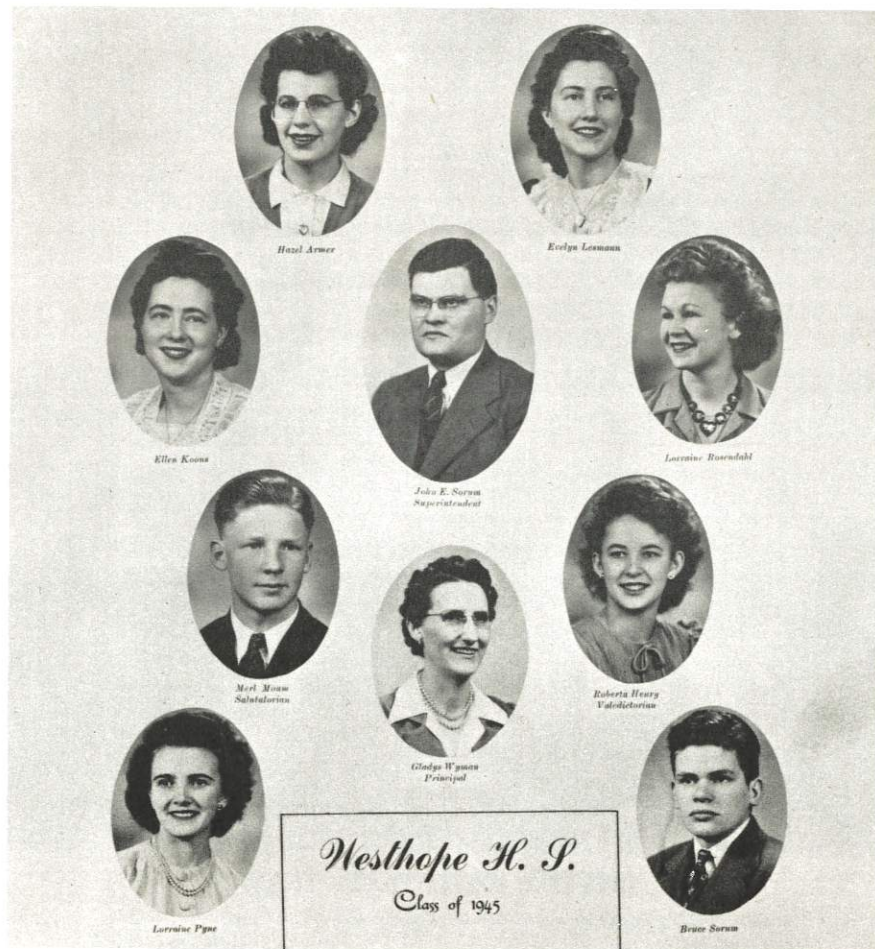


Back row: Patty Robillard, Imogene Armer, Bonnie Dixon, Janet Matthews, Violet Zahn, Unidentified.

Second row: Bob Krogen, Curtis Jensen, Gary Witteman, Jim Hegdahl, Duane Henderson, Ronnie Lee, Bill McDonald.

Front row: Harold Atkins, Tyrone Berentson, Unidentified, Donnie Baumann and Gay Feland.

Also enrolled were David Cook, Geraldine Timm and Sharon Soland.



1945-46 — Ernest Hunter heads the school. No school busses will be run this year but rural patrons will be paid mileage. At the school Carnival Dorothy Fraser was crowned queen and Jack Page, king. WHS was second in the One Act Play contest and Eleanor Stratton was named outstanding actress.

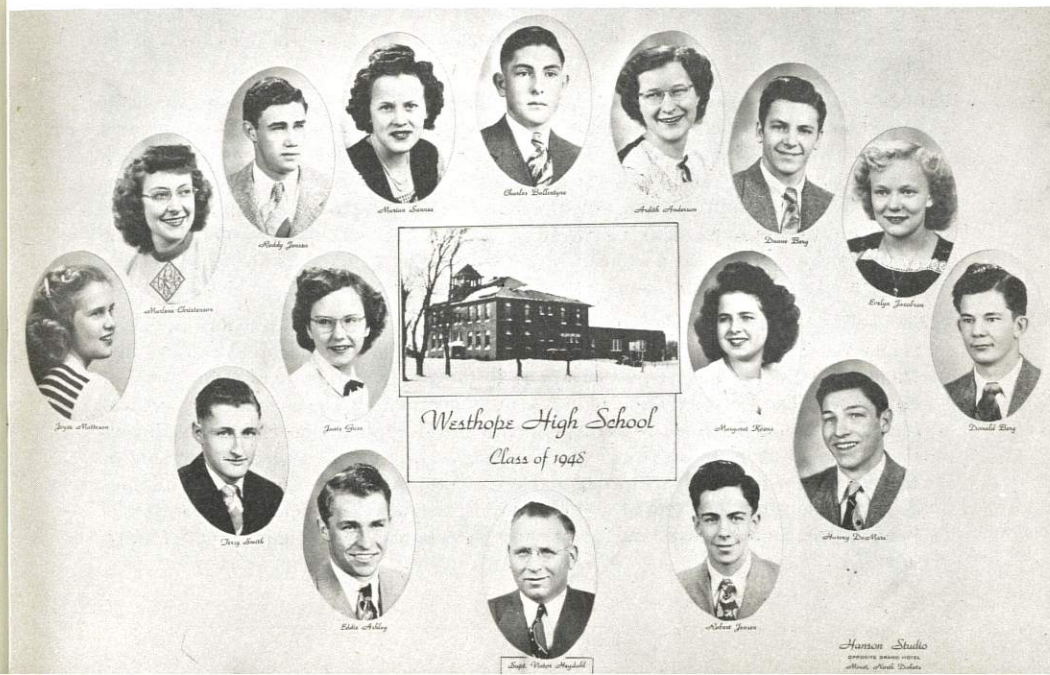
1946-47 — Olive Turner of Bottineau as principal and Marie Nesting of Westhope as 7th and 8th grade teacher are new members of the staff. L. H. Hale is the new janitor. Violet Deschamp was crowned Carnival queen with her three ladies in waiting being Eleanor Stratton, Beverly Sandy and Janice Meddaugh. For the miniature set Lois Ann Hawker was crowned queen of the party by King Lonnie Cook. The local One Act Play cast won first with "Senior Freedom" Duane Berg was best actor in the county and Eleanor Stratton second for best actress. The high school and 7th and 8th grades, under direction of Miss Nesting, presented the operetta "H.M.S. Miss Jones."



### 1946-1947 BASKETBALL TEAM

Back row: Mr. Hunter (Coach), Jerry Page, Bob Jensen, Charles Ballantyne and Donald Berg.

Front row: Ed Ashley, Don Moum, Duane Berg, Harvey DeMars, Rodney Jensen.





1947-48 — A new teacher, Miss Jean Spokely, joined the high school staff in mid-November bringing the number of teachers in high school up to four.

1948-49 — Max Allen is the new school superintendent. Doris Peterson is principal and her sister, Ardyce Peterson, completes the high school staff. We are first in One Act Play contest with "Minor Miracle" coached by Max Allen. Gerald Page best actor. Band was started by Max Allen and John Hegvik also started working with the group the same year.



### GRADE BASKETBALL TEAM — 1949

These boys grew up to take the State Tournament in 1954. They are, back row: Dennis Smith, Jack Arden, Darrell Henry, Jim Bryson, Ray Carpenter. Front row: Cecil Matthews, Larry Baumann, Len Lodoen, Don Jensen and Curt Seiffert.

1949-50 — John Hegvik is the new principal. School enrollment totals 193. There will be one extra grade teacher this term. Despite the fire which burned the Westhope school on Christmas Day, the County Basketball Tournament in Westhope went off as scheduled in late January. The students are getting used to being shifted around to new spots as a result of the fire. The Westhope Sioux won the right to enter the State Class C Basketball Tournament for the second year in a row and took third in the State Tournament.

1951-52 — Although under the handicap of using four different buildings in town the Westhope school opened as scheduled and Superintendent Hegvik said things were going pretty well by the end of the first week. Plasterers are at work on the new school and by early February the first and second grades and high school were using the new building, still only partially finished. Previously, the Catholic, Lutheran and Presbyterian churches had been used as well as the Masonic Temple. The Band Mothers, by a fortunate purchase, were able to get 28 band uniforms for a very nominal sum and the band is now very neatly outfitted.

1952-53 — Don Mizera has been hired as the new music teacher, and will teach band, high school vocal music as well as a couple of other subjects. The school district has purchased three new 36-passenger busses and routes to be laid out will cover about 35 miles each. The Westhope School is now fully accredited. The school yearbook was highly acclaimed as an outstanding publication, according to Superintendent Hegvik. He also mentioned the work of typing students, work of the newspaper editors as among fields which are worthy of high praise. Great to be in the new school building. A party was given by faculty for students at Christmas. The wonderful orchestra of John Hegvik, Don Mezera, and Don Schulz entertained by singing "In Old Shanty-town."



First and Second Grades — 1943-1944. Class of 1954 and 1955. Miss Olson, Teacher.







School Band — 1953 at Ceremony in Westhope.



Orchestra for party put on by faculty in 1953.

Band Marching — 1954  
Cecil Matthews, Director

### GRADE BASKET- BALL TEAM 1954

Back row:  
Coach Don  
Schultz, Lonnie  
Cook, Gordon  
Henry, Larry  
Martinson.  
Front row:  
Larry Car-  
penter, Dyron  
Rauk, Ronnie  
Williams, Terry  
Baumann.



1953-54 — Enrollment on opening day was 284 which Superintendent John Hegvik says sets a record. There will be no football team this year, the chief reason being so few schools in the area have teams. The Sioux were Class C State Basketball Champions. The school had outstanding ratings at the County Music and Speech Festival and had many highly superiors. The Sioux won the Bottineau County Boy's Track Meet for the third year in a row and retained permanent possession of the traveling trophy.



### CLASS OF 1954 8th GRADE

Jim Bryson, Darrell  
Henry, Don Hegvik,  
Don Belcher, Cecil  
Matthews, Alves  
Benthagen, Charles  
Armer, Donna  
Neilson, Patty Lee,  
Ruth Hawker.

Bottom: Nancy  
Brown, Maxine Allen  
and Judy Rosendahl.

1954-55 — School enrollment was up again this year and was an even 300 on opening day. The enrollment in the first eight grades totaled 226 and in high school 74. The Sioux, defending State Class C Champions, earned the right to enter the State Tournament but lost to Hope in the opening round.



### CLASS OF 1956-57 IN GRADES

Bottom row: Edward Hoff, Tom Soland, Rollie Matteson, Jerry McKechnie, Jim Hegdahl, Bob Parker, Ronnie Baumann.  
Middle row: Violet Zahn, Monte Synder, Janet Matthews, Curtis Jensen, Sandra Hovland, Violet Hoff, Harold Atkins, Ronnie Lee, Bill McDonald, Covel Hulse, Don Baumann.  
Top row: Lonnie Benthagen, Imogene Armer, Bonnie Dixon, Carol Larson, Patty Robillard, Vonda Stevenson, Gary Witteman, Duane Henderson, Tony Berentson.



1955-56 — School opened with six new teachers: Berta Marlowe, 1st; Clarence Klevjord, 7th grade and band; Leona Norton, 8th; Leona Forsythe, 6th; Christine Shaw, high school English; Delores Dean, social science. Opening enrollment was 317, including a high school enrollment of 76. Superintendent Hegvik tendered his resignation effective at the end of the term after seven years in the Westhope School System. Alton O. Hanson will be the new superintendent. With school enrollment increasing every year, the new school erected in 1952 is already over crowded and the board is considering an addition that would include more classrooms. Indicative of the trend, it is expected there will be 45 first graders starting in the fall and two first grade teachers are planned.

1956-57 — New teachers include Alton O. Hanson as superintendent; Dave Turner, principal, coach and natural science; Olaf Ringerud, music and math; Eugene Kohlman, English and social science; Lois Olson, commerce and English. Enrollment in the grades is 241 and in high school 75. The first grade, with enrollment of 46, is split in two classes with two teachers. Westhope will be in Class B Athletics this year. Music groups, under Olaf Ringerud, presented a very fine Christmas concert. Several groups performed including the Senior Band, the Boy's Glee Club, Girl's Glee Club, Mixed Chorus and several small vocal and instrumental groups. The school board made a ruling against student smoking and Superintendent Hanson said any student caught smoking in public would be expelled.

1957-58 — A 15 teacher staff has been completed. The board has rented the Masonic Temple as temporary quarters for the fourth grade and band until the new school addition is completed. Enrollment up with opening registration of 84 in high school and 241 in the grades. Fifty MSTC prospective teachers visited the school classrooms. The high school chorus of 50 voices, directed by Olaf Ringerud, sang seven numbers at the State NDEA Convention in Minot. Driver Education will be inaugurated with the 1958-59 term.



#### 1957 AND 1958 CLASSES IN THE SEVENTH AND EIGHTH GRADES

Back row, left to right: John Hegvik (Superintendent), Tom Soland, Larry Martinson, Donovan Reinke, Orlon Ballantyne, Bob Ballantyne, Glenda Kirk, Helen Kormann, Lonnie Benthagen, Lois Ann Hawker, Mr. LeRoy Frederick.

Second row: Jerry McKechnie, Ted Livesay, Dale Lesmann, Don Baumann, Lonnie Cook, Sharon Soland, Dorothy Lee, Thelma Stead.

Third row: Rosalie Williams, Bernice Hulse, Kathy Brown, Carol Sandy, Eleanore Sannes, Connie Seiffert, Judy Damstrom, Sandra Hovland, Lisa Strand.

Bottom row: Jerry Arden, Ronnie Williams, Jerry Berentson, Rollie Matteson, Larry Carpenter.

1958-59 — School enrollment keeps climbing and this year is 258 in the grades and 86 in high school for a total of 344. Christmas concert by high school Concert Band and Concert Choir well received. Superintendent Hanson presented his resignation effective at the end of the term. He had been here for three years. The Westhope High Debate Squad traveled to Grand Forks to participate in the UND Debate Conference. Local debaters are: Connie Reinholdt, Nancy Munn, Gaudia DeMars, Jim Munn, David DeMars, Marilyn Munn, Gale Stead, John Belcourt, Jerry Schmidt, John Martinson. S. J. Gores has been hired as new school superintendent. At the County Music Festival, our music groups came home with two highly superior plus ratings, for concert band and brass ensemble and 18 highly superior ratings. At the District Music Festival in Minot, local groups won 10 highly superior ratings, 10 superior and three excellent. Thirty-two are enrolled in Kindergarten with Mrs. Harry Kline as teacher.



#### WESTHOPE SCHOOL FACULTY ABOUT 1959

Front row: Ada Olson, Gladys Wyman, Unidentified, Lois Ash, Doris Peterson, Joyce Hald, Charlotte Chance.

Back row: Dave Turner, Olaf Ringerud, Norma Brown, Mrs. Norton, Lois Basich, John Gashwiler, Unidentified, Al Hanson.



#### FOOTBALL — 1960

Back row: Don Hanson, Mylon Lodoen, Paul Henrickson, James Munn, John Martinson, Paul Hanson.

Second row: Robertson, Gordon Himle, Rodney Conway, Bill Matthews, Carlton Naseth, Gary Lodoen, Tom Helgersen, Mr. Tohm.

Front row: Robert McCann, Micky Seiffert, Jim DeMars, Mike Page, Ronald Henderson, Jim Seiffert, Don Page.



1959-60 — Five new teachers in the grades, and all but one new high school teacher. High school teachers include S. J. Gores, superintendent; Richard Jensen, music and math; Harland Larson, Dwight Holter, Lawrence Boldt. Westhope Smoke Signals has been started as a school newspaper within the columns of The Westhope Standard. WHS will again put out an annual and John Belcourt has been named editor. Sally Hovland is assistant editor, and others on the staff are Judy McKechnie, Nancy Munn, Mary Cameron, Tom Helgerson, Bill Matthews, Barbara Baumann, Marilyn Munn, Mary Reinholdt, Barbara Belcourt, Rosalie Deschamp, Dorothy Rauk, Jim Munn, Paul Schmidt, John Martinson. Voters overwhelmingly approved a 50% increase above the legal tax limit.

1960-61 — Among the new teachers for the coming term are LeRoe Robertson, principal, coach, social studies; Don Mhyra, English, Dramatics, school news; Marjorie Mhyra, Home Ec.; Lui Ravnaas, math, science; Marvin Thom, shop. Twenty-four subjects were offered in high school. Twenty-one were out for the opening workout. Six lettermen reported at the opening of the basketball season. They are Bill Matthews, Jim Munn, Paul Henrickson, Ron Henderson, John Martinson, Tom Helgerson. Sandra Thompson heads the Pep Club as president; Nancy Matteson, vice-president; Helen Madsen, secretary.

1961-62 — This term 20 high school students from Landa district are attending Westhope High School. High school enrollment was 117 on opening day, an increase of 31 over last year. Westhope school has been fully accredited. The "Baby Sioux" grabbed the Bottineau tournament, defeating Bottineau 41-33 in the final. Myron Lodoen, Kelly McLean, and Duane Branson were mentioned in the news write-up. Gary Sisk won the grand prize at the annual District Science Fair at Minot. Mary Lou Sisk, his twin sister, placed third in the girl's division for her project of a model of the moon's rotation and Don Henrikson placed third in the boy's division. Gary Sisk was one of four first place winners at the Junior Science Fair at Mandan. His project was a motor and generator.

1962-63 — Opening day enrollment was 383, including enrollment in the grades at Landa, which district is now part of the Westhope School District. High school enrollment is 121. First string line-up is Mylon Lodoen, Gary Martinson, Jim DeMars, Rod Conway, Don Hanson, Leith Nygaard, Billy Stratton, Jon Madsen, Steve Acheson, Myron Lodoen, Kelly McLean. The Carrington Choir, under leadership of Olaf Ringerud, former Westhope music teacher, gave a concert here.

1963-64 — New teachers include Gordon Lindquist who teaches band and chorus; James Goldsberry, English; Dennis Schuske, Industrial Arts, P.E. and track; Vernon Hedstrom, social studies and football; Duane Johnson is the new superintendent. Enrollment at the beginning of the term was 246 in the grades, which includes 30 in the Landa school, and 121 in high school. Westhope grade students presented the operetta "Little Blue Angel" with 220 students participating in the Christmas play which included solos, small vocal groups, a brass choir, ballet group and selections from the grade chorus. Gordon Lindquist directed the production assisted by the grade teachers. Peggy Munn and Arlan Akerlind were finalists in the National Merit Scholarship program. WHS music students won 17 highly superior ratings at the district music contest. Twenty-five students involved in the 17 first division ratings were eligible to attend the State Music Contest at Jamestown. The 60-piece high school band attended the Williston Band Day. Gordon Lindquist, director.

### LOCAL TEAMS SET RECORD IN TEEN QUIZ

In 1963-64, The Otter Tail Power Co. was continuing a series of programs on TV called Teen Quiz, which they had run for several years. High schools in the Otter Tail Territory

in North Dakota, South Dakota and Minnesota competed in teams of three with an alternate. The Westhope teams, coached by Lui Ravnaas, won six straight contests in seven appearances. In the five years the show had been on the air only one school had equalled the Westhope record. The local quiz teams went to the Fargo Television studios for the competition. They won several valuable prizes.



### TEEN QUIZ CHAMPS

Back row, left to right: Larry Armer, Darvin Bauer, Mylon Lodoen, Mr. Ravnaas (Advisor), Don Henrikson, Robert McCann.

Second row: Gary Sisk, Steve Mattern, Jim DeMars, Gary Martinson, David Lee, Orville Lee.

Third row: Betty Nesting, Mary Lou Sisk, Corrine Cleven, Carol Robillard, Ann Munn, Alin Sausker, Linda Drake, Delores DeMars.

Front row: Peggy Munn and Phyllis Cleven.

Two students were absent the day the picture was taken: Mary Ann Baumann and Arlan Akerlind.



### 1964 CLASS IN THE SIXTH GRADE

Back row, left to right: Rodney Conway, Mylon Lodoen, Lloyd Weber, Gail Kirk, Jerry Opdahl, Steven Acheson, Brian Carey, Shirley Jenstead, Bette Nesting, Mrs. Chance, Teacher.

Second row: Ann Munn, Mary Ann Baumann, Loyce Helgerson, Linda Drake, Julie Nielsen, Peggy Munn, Joan Marcotte, Carol Robillard, Connie Thompson.

Bottom row: Gary Martinson, Jim DeMars, Michael Seiffert, Bob McCann, David Soland, Bob Deschamp, Neil Matteson, Mike Page, Johnny Palmer.



1964-65 — With the opening of school there was an elementary enrollment of 234, with 200 at Westhope and 34 in the grades at Landa; high school enrollment is 139. With 43 eighth graders this year, a big increase in high school enrollment is seen next year. Superintendent Duane Johnson says the school is "busting" at the "seams" but are able to manage by offering two classes in several subjects. The WHS Homecoming was declared a big success; Mary Lou Sisk was crowned queen, and the Sioux won the football game from Columbus 31-25. The school band played for the State Legislature and they traveled in four busses. Other Junior and Senior students also attended. The Sioux won the Conference Championship with 13 wins and no defeats. The grade school presented the Operetta "Round Up on the Moon" directed by Miss Anderson. A Summer Band program was organized under direction of Gordon Lindquist. The program is to be financed jointly by the Chamber of Commerce. Westhope School and the Band Parents. WHS graduated a class of 35 seniors and there were 40 who advanced from the eighth grade to high school.

1965-66 — A very successful concert was given by the Westhope Concert Band, the Cadet Band and the Stage Band. The Sioux won top honors in the District Basketball Tournament but lost to Kenmare in the Regional. Homecoming queen this year was Jan Ledoux.



**1965 FOOTBALL**

Top row, left to right: Mr. Hosna, Don Marcotte, Kelly McLean, Duane Ashley, David Kamholtz, Jim Baumann, Mike Mattern, Roger Norris, Kent Nygaard, Myron Lodoen, Mr. Hedstrom.

Second row: Bruce Martinson, Kip McLean, Merlin Martin, Mike Neese, Gerald Beasley, Barry Neese, Tim Kamholtz, Ted Deschamp, Larry Ballantyne.

Bottom row: Larry Thompson, David Jensen, Kent Festvog, Richard Beasley, Pat Brown, Richard Thompson, Don Ray Stratton.

### BUS WESTHOPE STUDENTS TO LANDA SCHOOL

For the 1968-69 term, the Westhope School Board has considered proposals regarding the new Landa school. These proposals would mean (1) Closing the Landa school and transporting the grade pupils from Landa to Westhope; or (2) Utilizing the Landa school building by bussing grades 3, 4 and 5 together with the teachers, from Westhope to Landa. The board decided on the latter option.

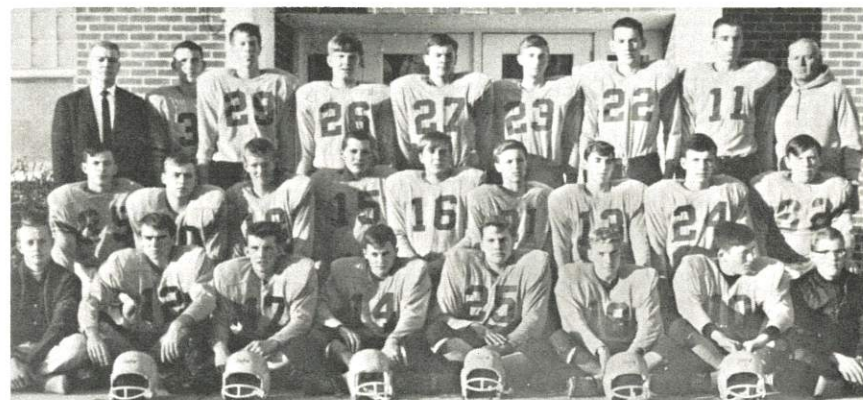
1966-67 — The Westhope Hi Stage Band of 19 musicians made a big hit at their appearance before the grandstand at the County Fair. Eleven lettermen beef up the Sioux football squad this year. They are Roger Norris, Larry Ballantyne, Mike Matter, Don Stratton, Kip McLean, Mike Neese, Merlin Martin, Bruce Martinson, Don Marcotte, Teddy Deschamp, Barry Neese. Principal Ordean Hosna says total school enrollment is 325, up from last year. Richard Skarperud has been hired as the new

school superintendent. The Sioux slaughtered the Columbus Cougars at the Homecoming game. Vernon Hedstrom is head coach and Ordean Hosna, assistant coach. The Music Department presented a "Pops Concert," and the musical "Swinging High" was a great success. Homecoming queen was Pat Thompson.

1967-68 — Contracts were let for the six bus routes. Bus drivers are: Henry Leoux, Darrell Hulse, Lloyd Halvorson, Kermit Thompson, Leonard Lodoen, James Sandy. Lloyd Halvorson is combination bus driver and custodian at the Landa school. Jim Sandy is bus driver and part-time custodian at the Westhope school.

### 32 STRAIGHT WINS IN FOUR YEARS

The Westhope Sioux took the Souris River Conference Championship for the 1967 season, and in doing so chalked up their 32nd straight win in four years. They finished the season with a 9-0 record. Homecoming queen was Barbara Forschen.



**1967 FOOTBALL TEAM**

Front row: Warren Genre, Larry Ballantyne, Tim Deschamp, Dave Todd, Mike Neese, Barry Neese, Kip McLean, Joel Johnson.

Second row: Mike Stratton, Kent Festvog, Richard Thompson, Don Marcotte, Mike Mattern, Dennis McKechnie, Mike Neff, Ted Deschamp, Dale Hahn.

Third row: Assistant Coach Hosna, Dale Norris, Merlin Martin, Bruce Martinson, Don Stratton, Richard Bauer, Roger Norris, Dave Jensen, Coach Hedstrom.



**1967**

Rosemary Lee, Donna Sisk, Kristie Johnson, Renee Stavheim, Susan Munn, Heather Cameron, Linda Ballantyne, Toni Lunde.





### WHS STAGE BAND — 1967

Front row: Merlin Martin, Dayle Odegaard, Donnie Cameron, JoAnn Soland, Pat Thompson, Debbie Todd.  
 Second row: Sheila Spencer, Donna Sisk, Joel Johnson, Tim Matthews, David Todd, Larry Ballantyne, Wade Genre.  
 Third row: Mike Jensen, John Moum, Donavon Glinz, Tim Sisk, Barbara Lesmann, David Jensen.  
 Row four: Keith Berenston, Mr. Lindquist, Barb Forschen, Susan Munn.

1968-69 — Superintendent Skarperud announces teachers on the school staff for the new term include Mr. Cooper, social studies, driver ed., English; Mr. Rasmussen, physics and science; Mr. Henricks, business; Mr. Schuske, vocational and industrial arts; Mr. Hosna, principal, English and speech; Mr. Hedstrom, coach and social studies; Mrs. Page returns as home ec. teacher; Miss Thacker, girl's phy. ed. for high school and elementary. New instructors for the coming term are Gary Stenehjelm, music; Miss Schied, math and German. Homecoming queen was Laureen Stratton.



### "W" CLUB — 1968

Front row: O. Hosna, L. Ballantyne, M. Martine, D. Jensen, Coach Hedstrom.  
 Second row: J. Johnson, M. Stratton, D. McKechnie, M. Neff, M. Neese, D. Deschamp, D. Todd, T. Deschamp.  
 Third row: B. Neese, M. Mattern, D. Odegaard, B. Martinson, D. Stratton, D. Marcotte, T. Deschamp.  
 Fourth Row: K. McLean, K. Festvog, D. Hahn, W. Genre, D. Norris, R. Thompson.

### 40 STRAIGHT WINS IN FIVE YEARS

The Westhope Sioux set up what may well be a state and national record by winning 40 straight football games in five years. They trimmed Burke Central in the 1968 season for their 37th win; zapped Berthold for the 38th; tripped the Bowbells Eskimos for the 39th win, and beat Flaxton for the 40th straight victory in five years. Congratulations to Coach Hedstrom and the Sioux.



### CLASS OF 1968 IN THE FOURTH GRADE

Row one: Rhonda Hopper, Petty Henderson, Elise Fields, Susan Munn, Kathy Hulse, Janet Talcott, Jamine Hegdahl, Heather Cameron.  
 Row two: Dean Berentson, Larry Ballantyne, Richard Bauer, Merlin Martin, Donald Branson, Donovan Glinz, Miss Joyce Haldi.  
 Row three: Mike Neff, Brian Skinn, Kip McLean, Douglas Gerlach, Dennis McKechnie.

1969-70 — Peggy Engh and Nancy Bangs, seniors at WHS, were chosen among 350 other high school seniors from across the nation to participate in the second session of a Presidential Classroom for Young Americans. The purpose is designed to give bright high school seniors the opportunity to see first hand the operations of their government. They spent a week in Washington, D.C. Homecoming queen was Stephanie Coliton.



### STUDENT COUNCIL — 1969

Vernetta Klockstad, Ted Deschamp, Dayle Odegaard, Mr. Hosna, Donnie Cameron, Barry Neese, Bryan Hansen.





### A-SQUAD BASKETBALL — 1969

Coach Hedstrom, D. Todd, D. Cameron, M. Stratton, B. Deschamp, R. Thompson, D. Norris, J. Johnson, K. Festvog, W. Genre, B. Neese, T. Deschamp, T. Deschamp, Dale Hahn was the Student Manager.



### 1969 GRADE BASKETBALL — GRADUATING CLASS 1973-1974

Row one: K. Martin, S. Sieffert, D. Sisk, T. Nielson, D. Hulse, K. Martin, L. Foltyn, S. Hagen.  
Row two: T. Henderson, B. Sandy, T. Henry, L. Striker, M. Matteson, M. McCann, Mr. Hill.  
Row three: W. Sivertson, J. Aalund, T. DeMars, J. Mattern, E. Page.



### TRACK — 1969

Row one: T. Deschamp, B. Neese, B. Deschamp, J. Nygaard, D. Todd, P. Mattern, R. Thompson.  
Row two: D. Stratton, H. DeMars, L. Haugen, B. Henderson, D. Norris, M. Jensen, B. Hanson.  
Row three: Mr. Schuschke, G. Harper, D. Cameron, K. Martinson, M. Stratton, W. Genre, J. Johnson.



### CLASS OF 1955 7th GRADE

Herman Floberg, Curt Seiffert, Len Lodoen, Arlyn Floberg, Nelda Soland, Larry Baumann, Frances Hulse, Mavis Hanson, Bob Arden, Lola Soland, Marlene Hanson, Lorraine Stead.

Front row: Alene Parker, Peggy Guss and Barbara Helgerson.

1970-71 — School opened with an enrollment of 325. An exchange student from Chili, Veronica Pinedo, is making her home here with the Jim Page family while enrolled at WHS. Westhope High fielded a girl's basketball team and they entered the Newburg tournament but lost to Newburg in the opener and lost to Maxbass in the Consolation round. Soloists and groups entering the State Music Contest are Mike Jensen, Lonnie Foltyn, Marla Montgomery; Brass Sextette, Clarinet Choir, Flute Trio. The Brass Sextette, Clarinet Choir and Mike Jensen rated ones and Marla Montgomery, Lonnie Foltyn and the flute trio got a two rating. Mr. Skarperud announced the hiring of a full-time, year-around Vocational Ag instructor in the person of Michael Oberholtzer. He began his duties July 1. Homecoming queen was Carolyn Foltyn.

1971-1972 — Miss Rita Johnson is the new music teacher. In the Homecoming game, the Sioux beat White Shield to put the finishing touch. The school board is considering what to do with the Landa school, no longer used. Kindergarten got underway March 20th with Mrs. Mike Oberholtzer as teacher. Debbie Hegdahl has been named Westhope School Homemaker of Tomorrow in the Betty Crocker contest. Westhope High Concert Band received a No. 1 rating at the District Music event in Minot. Several groups and soloists also appeared and several No. 1 ratings were received. Homecoming queen was Barbara Henderson.

1972-73 — Superintendent Richard Skarperud announces the 1972-73 teaching staff is complete. Grades: Ilene Odegaard, 1st; Mrs. Amy Martinson, 2nd; Mrs. Ada Olson, 3rd; Mrs. Nellie Madsen, 4th; Mrs. June Kline, 5th; Mrs. Ruby Berentson, 6th; Curtis Hanson, H. S. principal, athletic director; Duane Young, math; Roger Cooper, English; Jim Henricks, business; Miss Ruth Finneman, Home Ec., speech; George Eltz, science; Rita Johnson, music; Mike Oberholtzer, VoAg; Marshall Maxwell, social studies; Miss Sharon Gessle, librarian, English. HOMECOMING: Mary Berentson was Queen for the Day; the Sioux defeated Glenburn 20 to 0. The Sioux won from White Shield Warriors the following week in the second game of the season but lost the final game to Carpio 14-8 to close with a 3-4 record. The Senior English class presented four one-act plays Jan. 12, written by seniors and cast and directed by them. Debra Lesmann has been named WHS "Homemaker of Tomorrow." Kindergarten began March 19 with Mrs. Curtis Hanson as teacher. The Home Ec. department had their Play School in April and three and four year olds will be attending. The Sioux basketball team was honored at a banquet at the Gateway March 20. The District Music Festival was held at Minot State College March 30-31. The students received very good ratings. Those receiving No. 1 ratings and who will enter the State Music Contest are Pam Baumann, bass clarinet; clarinet choir (Avis Hegdahl, Dinah Lee, Rhonda Aalund,



Debbie McKechnie, Joan Rasmus, Susie Marcotte, Tama Duffy). The seniors are presenting the class play "Tune in on Terror." Pam Baumann has been named to the Oddfellows United Nations Pilgrimage. The track boys attended the UND meet at Grand Forks. WHS totaled 103 points to win the North Central Conference meet at Bottineau.

1973-74 — Bus routes are being driven by Darrell Hulse, Jim Sandy, Bud Juve, Kermit Thompson. Superintendent Skarperud announces the dress code for girls specifies they may not wear blue jeans, shoes must be worn and dresses must be of reasonable length. Slacks are permitted. Boys will wear no facial hair, but may wear straight sideburns one inch below the ear. Hair may not touch the shoulders. Belts must be worn and shirt tails tucked in. Shoes must be worn. No cut off shorts. Jeans must be clean and unpatched. Marshall Maxwell says that with 24 boys out for practice the opening day, prospects are promising. There are 14 lettermen. WHS had a successful Homecoming. Joan Rasmus was queen and her attending princesses were Peggy Lesmann, Anita Zahn and Janice Haugen. The Sioux won the Homecoming football game by beating Bowbells 34 to 12 and ended the season with a 26-14 win from Sherwood. The Cadet Band and the Concert Band gave a winter concert Jan. 20th to a large audience.



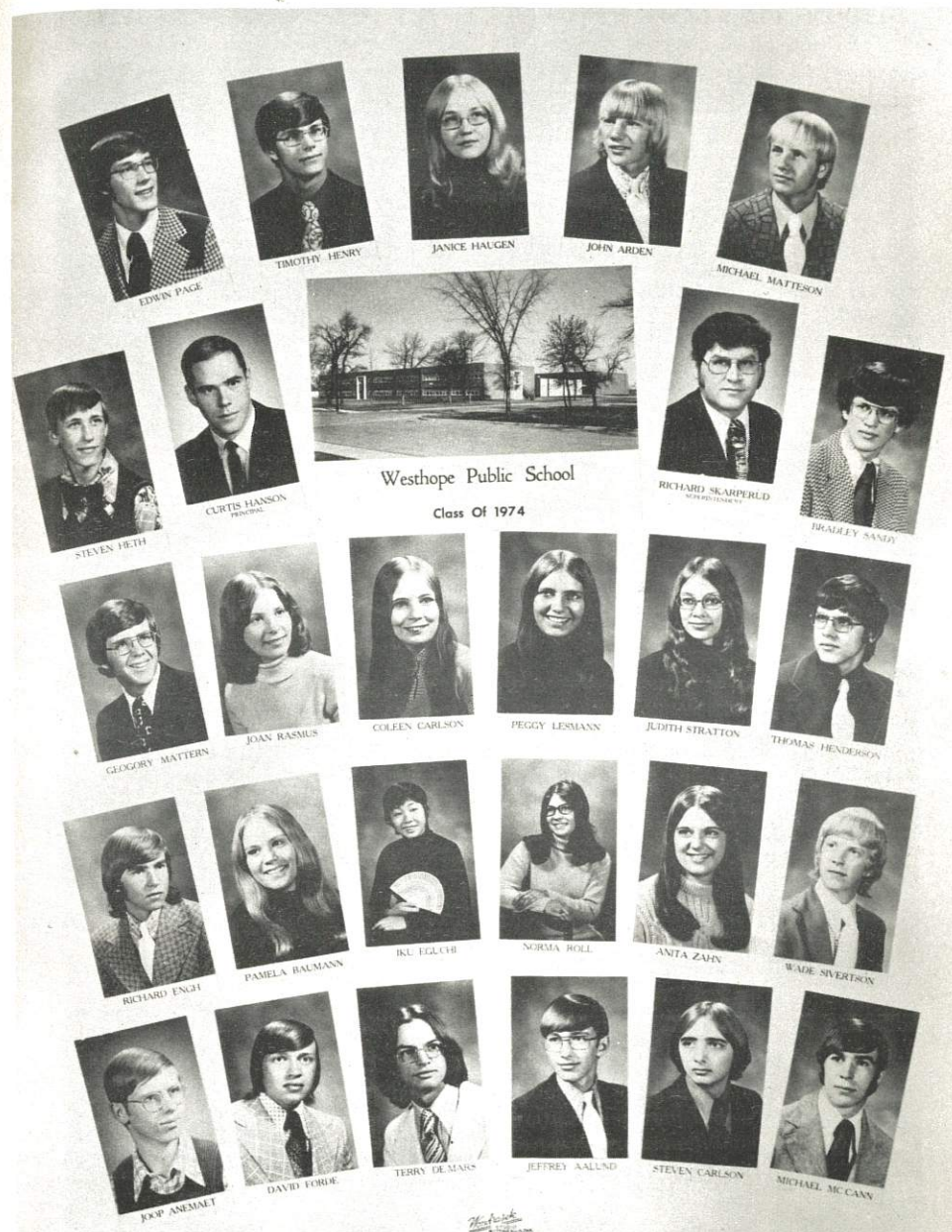
### 1974 CLASS IN SECOND GRADE

Top row, left to right: Tim Henry, Jeff Aalund, Kurt McLean, Greg Mattern, Eddie Page, Bruce Carpenter, Mike Matteson.  
 Second row: Gordon McGee, Terry DeMars, Mike McCann, Jone Keena, Joann Robillard, Wade Sivertson, John Arden.  
 Bottom row: Anita Zahn, Janice Haugen, Peggy Lesmann, Debbie Huber, Pam Baumann, Judy Stratton.

### EXCHANGE STUDENTS

Westhope High has been very fortunate to host several exchange students over the past few years. These close associations have been beneficial not only to the students, but to the town as well.

Veronica Pinedo, Chili. . . . . at Jim Pages  
 Anna Mendez, Brazil. . . . . at Bill Baumanns  
 Barbro Kohler, Sweden . . . . . at Eldred Johnsons  
 Charles Guerrillo, Brazil . . . . . at Don Martins  
 Iku Eguchi, Japan. . . . . at Robert McCanns  
 Joop Anamaet, Holland . . . . . at Darrell Henrys  
 Jacques Sohoir, France. . . . . at Arnold Bangs





## SOME OF THE FACULTY AT WESTHOPE HIGH



Gina Hegdahl  
School Cook  
1942-43



Clara Adams



LeRoy Frederick  
(1950s)  
(Freddy)



Mrs. Hughes, Hayden Williams, Ruth  
Auer (High School - 1942).



Mr. and Mrs. Nord, School Custodians  
for many years.



Gladys Wyman and Evelyn  
Siverts - 1942.



1943 School Faculty were John Sorum, Myrtle Olson  
Bush, Gladys Wyman Shaffer, Eleanore Schroeder,  
Evelyn Siverts, Dorothy Benson and Hayden Williams.



John Hegvik, Superintendent - 1950s.



Don Mizera, Music - 1952-55.



James Bailey, English -  
1950s.



Don Schultz, Principal  
and Coach - 1950s.



Orval Deschamp  
Current  
School Custodian



Gordon Linquist, "Mr.  
Music" - 1960s.



Assistant Coach Hosna  
aided Mr. Hedstrom in  
coaching the Sioux to their  
39th win in 1970.





Doris Matteson



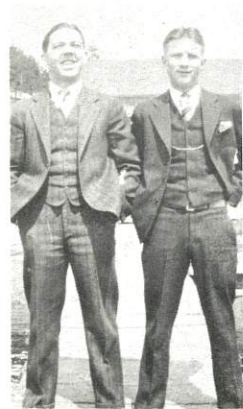
Dan Ferguson



Lorraine Burns



Nellie McIntyre  
Clara Gebhardt



Art Helgersen  
Win Baumann



Margaret Warner  
Corrine Meddaugh



Al Baumann



Lorraine Burns



Albert Pixley, Chuck Morwood, Al Baumann.



Ralph Page, Albert Pixley



Pansy Armer, Helen Aubert



Shady Matteson, Hope Talcott, Effie Matteson.



Marie Nesting



Mabel Himle, Florence Rehn



Tony Nesting



Don and Jean Findlay



Myra Irving



## COMMITTEES

General Chairman .....	Marvin Korman
Finance Chairman .....	Margo Helgersen
Registration Co-Chairmen ..	Bill Baumann, Mary Brown Fraser, Judy Matteson Rosendahl
	Lorraine Rosendahl Moum, Marie Christenson Rauk, Shirley Jensen Montgomery
	Eleanore Egger Ledoux, Barbara Forschen Lee
History .....	Cliff Drake
Memorial Service .....	Al Baumann, Glenn Jensen
Banquet .....	Leroy Houmann, Beth Hulse Houmann
	Donald Stratton, Doris Sletten Stratton
Memories .....	James Page, Ruth Ballantyne Page
	Paul Stratton, June Jacobson Stratton, Bernard Nesting
	Madeline Deschamp Korman, Beulah Larson Damstrom
Banquet Entertainment .....	Leonard Lodoen, Rosalie Jensen Henry
	Anna Lodoen Gunning, Sandra Thompson Henry
Banquet Decorations .....	Mrs. Gerald Page, Mrs. Lonnie Cook
	Mrs. Myron Lodoen, Lynette Genre Sailor
Open House Lunch .....	Vivian Trimble Hulse, Hazel Acheson Lodoen
Picnic .....	Terry Baumann, John McKechnie
	Myron Lodoen, Darrell Henry
Golf Tournament .....	Darrell Henry
Advertising .....	Larry Rosendahl, Ruth Trimble Rosendahl
	Mr. and Mrs. Darrell Hulse, Mr. and Mrs. Clarence Lodoen
Booklet Chairman .....	Janet Matthews Sivertson
	Cecil Matthews, V. Marie Nesting, Ethel Vivian Jensen, Pam Cook Westphal

## 1941 CLASS

O Westhope high school, we pledge to thee,  
 Our fond remembrance and loyalty.  
 From early morn till set of sun.  
 We have our work, our play, our fun,  
 And now that all our school days are o'r,  
 You find ambition of highest score,  
 We hope our successors too will say,  
 "Good Westhope High School Days."