

# QUARANTINE GUIDELINES FOR STUDENTS AND STAFF

All students and staff should continue to follow the 3Ws:



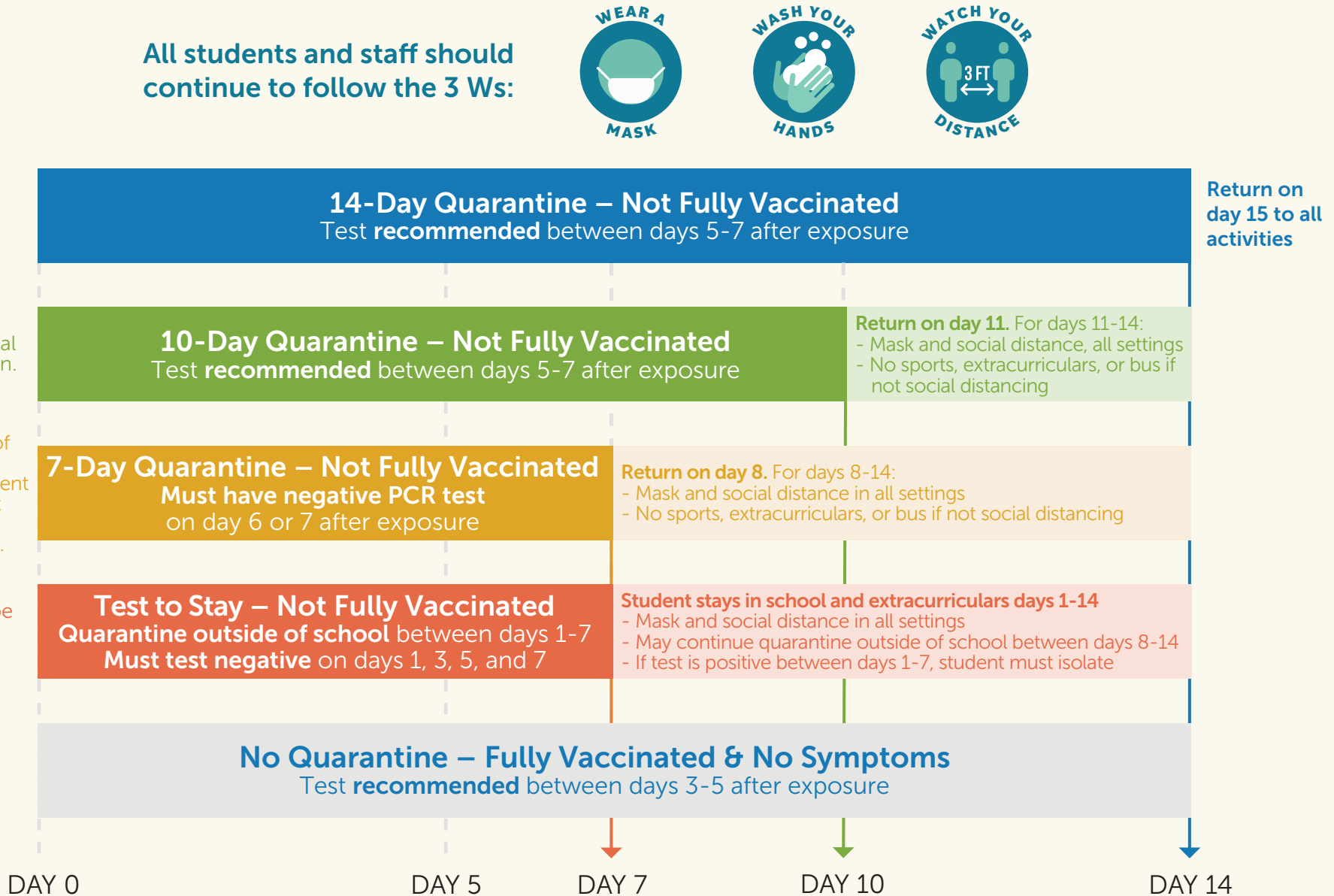
## Requirements

No requirements. This is the ideal option.

Must mask and social distance upon return.

Masks worn at time of exposure. Must work with Health Department contact tracers. Must mask and social distance upon return.

Masks worn at time of exposure. Must be school-related exposures. School has testing on site.



**Students should continue to monitor for symptoms through day 14.**

If symptoms develop, get tested. If a student tests positive at any point, they should isolate for 10 days.

*Guidelines are subject to change on a case-by-case basis or if an outbreak occurs.*