



**the project school**

heart | mind | voice

**RETURN FROM QUARANTINE DECISION TREE  
FOR UNVACCINATED INDIVIDUALS  
K-12 | 2021-2022**

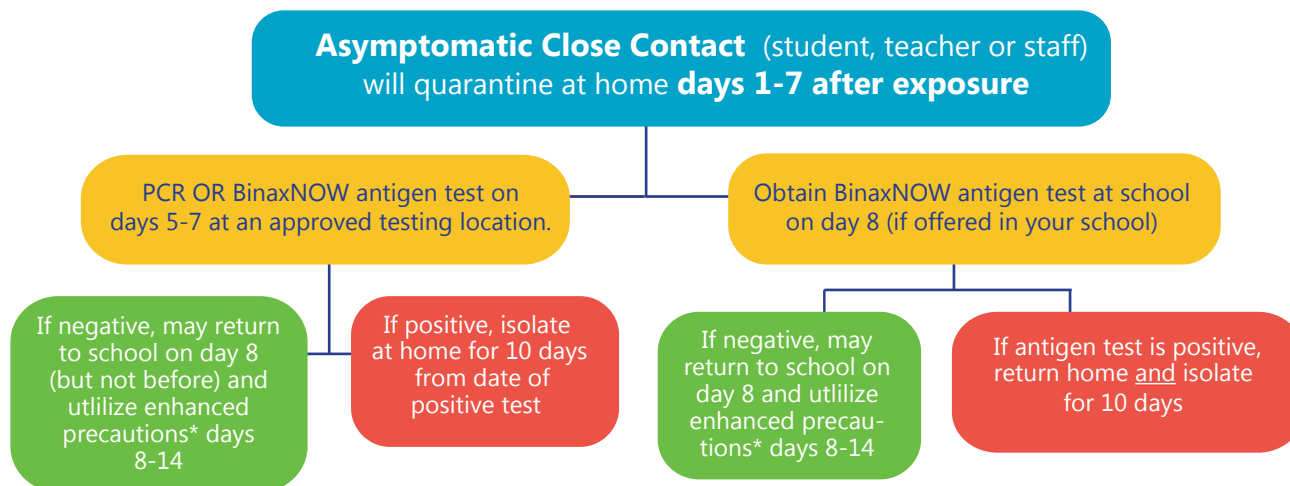
**ADDITIONAL CLARIFYING NOTES FROM THE PROJECT SCHOOL (updated 8.27.21)**

- (1) We are very supportive of these new guidelines from the CDC and IDOH, determined for the 2021-2022 academic year.
- (2) We encourage unvaccinated quarantining (due to exposure) individuals to take the first option proposed in this decision tree, which is to have a PCR or BinaxNOW test administered on the quarantining individual between day 5 and 7 of their quarantine. If the result is then positive, the individual can begin their 10-day positive case isolation on day 5-7, rather than waiting until day 8 to receive a positive test at school, which will necessitate then being sent home for an additional 10 days. The earlier testing window will potentially reduce the amount of time away from school and will also keep our entire school community safer.
- (3) If there is a positive COVID case in the home, unvaccinated individuals must remain at home, as they are immediately considered to be an exposed close contact. They should attempt to quarantine completely separately from the positively diagnosed person. If they are unable to remain completely separate, then the quarantining protocol described in this document should not begin until day 11.
- (4) We wish to emphasize the definition of school-based close contact, as outlined in the below IDOH document: a close contact is considered someone who has been closer than 3-feet from an infected individual for more than 15 minutes cumulatively within a 24-hour period. If no one has been a close contact as determined by this definition, contact tracing will not need to take place within the school.
- (5) The above definition of close contact is only possible when consistent, appropriate, and effective masking is in place. Face coverings should be multi-layered cloth or medical-grade masks – not bandanas, gaiters or other items. Individuals who struggle with keeping masks on may not be able to be ruled out as a close contact. Parents and guardians should continue to work with their children on effective universal masking protocols, both for their safety and for their ability to be ruled out as a close contact (which would otherwise then necessitate the possible missing of some period of time from school).
- (6) If an unvaccinated student is feeling ill, they should remain at home and report symptoms to the school. And if they live in the home with an individual who receives a positive COVID diagnosis, they should also remain at home. In both instances, the family should immediately alert TPS both by contacting TPS Health Aide [MS. STACEY](#) and by also submitting the [ABSENCE NOTIFICATION FORM](#), which will prompt them to answer COVID-related questions.
- (7) The protocols and decision tree within this document are for UNVACCINATED individuals. These do not reflect steps to be taken by vaccinated individuals. The Project School will share new protocols for vaccinated individuals as soon as possible.

The Centers for Disease Control and Prevention (CDC) and the Indiana Department of Health (IDOH) continue to recommend quarantine for a full 14 days and recognize that any quarantine shorter than 14 days balances reduced burden against a small possibility of spreading the COVID virus. CDC and IDOH will continue to evaluate and update guidance and recommendations as necessary. Other than a full 14-day quarantine, there are two other options available for schools.

**Option 1** - Return on day 11 after 10 days of quarantine-no testing required to return to school.

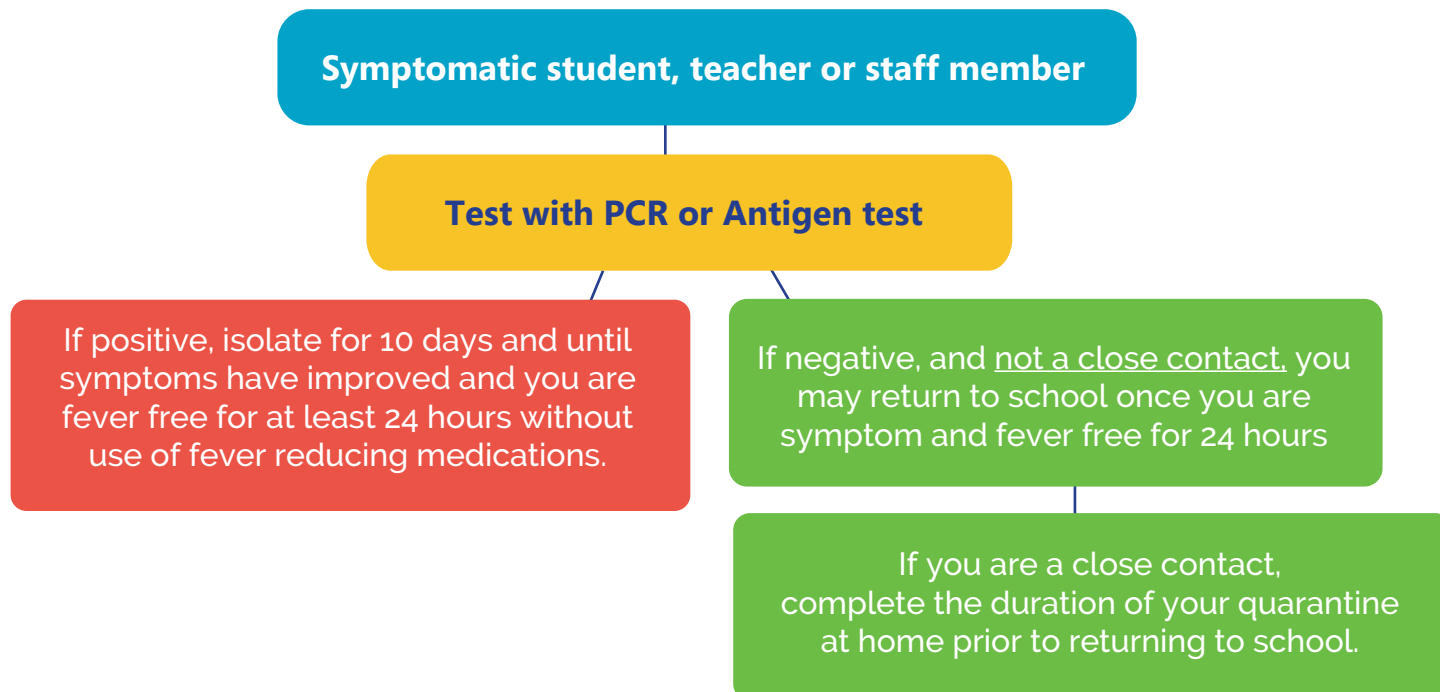
**Option 2** - Return on day 8 after 7 days of quarantine-this option requires testing. **See algorithm.**



### When returning prior to day 15

Individuals must monitor daily for symptoms and isolate and obtain a COVID test should symptoms develop through day 14  
Individuals must follow enhanced precautions through day 14

### Symptomatic Algorithm



**The changes in definition apply only apply only to students in grades K-12 for the academic school day while in the classroom.**

- IF at least 3 feet of separation is provided between students during the school day, when students are in the classroom AND when masks are always worn, contact tracing will not need to be completed if there is a positive case identified in the classroom with a minimum of 3 feet of space between classmates.
- The decrease to 3 ft for close contact tracing only works IF masks are consistently worn and other mitigation strategies are in place.
- Without consistent mask use and distancing to at least 3 feet in the classroom during the educational portion of the school day, you must contact trace to 6 feet.
- This exception does not apply to teachers and other adults in the classroom.

**These changes DO NOT apply in high-risk classes such as band, orchestra, choir and show choir. Other high-risk classes may also need to be placed in this category. Changes do not apply for athletics, including cheerleading or other extra-curricular activities.**

- Continue to mask at all times and distance AT LEAST 6 feet
- Close contacts are defined as anyone within 6 feet during athletics or other extra-curricular activities.

***\*Enhanced Precautions when returning prior to full 14-day quarantine***

- Masked at all times on bus and during school day, no exceptions.
- Maintain distance of at least 3 feet from others at all times during the educational school day. The only time lesser distance of close contact is 3 feet is during the educational portion of the day when everyone is in the classroom and wearing a mask.
- Lunch to be eaten separately from others as mask will be off when eating. Remain 6 feet from others, no exceptions.
- Hand hygiene should be a priority.
- Symptom monitoring daily by parents, as needed by school staff, during the school day.
- **If ANY signs or symptoms are identified while at home, student/teacher/staff should NOT come to school and should seek a COVID test.**
- **If symptoms develop during the school day, individual should be sent home as soon as possible to get a COVID test.**
- **If COVID test is positive, begin 10 days of isolation starting from the date symptoms began.**
- **If COVID test is negative, because individual is a close contact, must complete remainder (days 8-14) of 14-day quarantine and remain at home until symptoms improved and 24-hours fever free without the use of fever-reducing medication.**