



COVID-19 SCREENING TESTING TO SAFELY REOPEN IN 2021

WHAT IS SHIELD ILLINOIS?

- SHIELD Illinois utilizes the covidSHIELD saliva-based RT-PCR test that is easy to administer, highly accurate and available at a low cost, with results in 24 hours or less.
- covidSHIELD received emergency use authorization from the FDA, allowing it to expand broadly through a statewide network of CLIA laboratories.
- Developed by scientists at the University of Illinois Urbana-Champaign, the covidSHIELD process helped the university operate safely in person during the 2020-21 academic year.

WHY IS SCREENING TESTING FOR COVID-19 IMPORTANT?

- covidSHIELD takes a proactive approach to quickly isolate individuals who test positive in order to reduce virus spread.
- Frequent, widespread testing allows SHIELD Illinois to identify infected people before they show symptoms or are able to transmit the virus to others.

How a virus with a reproduction number (R_0) of 2 spreads



WHAT TESTS ARE AVAILABLE?

MOLECULAR TESTS

Identify RNA sequences within the nucleus of the COVID-19 virus



VS

ANTIGEN TESTS

Identify surface proteins on the COVID-19 virus



- Molecular tests have a more reliable rate of true positive results than antigen tests
- Molecular PCR tests like SHIELD can detect the virus within 2 days of infection

- Antigen tests have a high accuracy for people with COVID-19 symptoms
- Antigen tests typically provide faster results than molecular tests

WHAT TYPES OF MOLECULAR TESTS ARE AVAILABLE?

CLIA APPROVED PCR TESTING

- Accuracy has made it the gold standard of COVID-19 tests
- Individuals who test positive don't need to seek out a second confirmatory test
- Accurately detect asymptomatic cases and cases with low viral loads
- Test undergoes a thorough validation protocol and is performed by highly trained and qualified personnel
- Fluorescent probe-based detection technology makes the assay highly specific and sensitive

SURVEILLANCE-BASED RT-LAMP TESTING

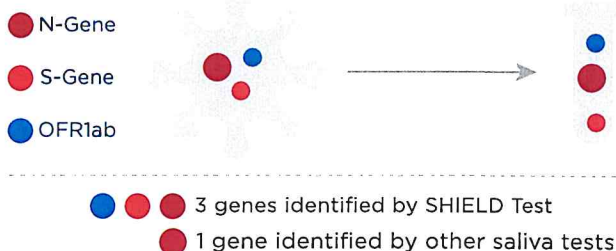
- Faster results and less expensive than PCR tests
- Requires a second test when utilized as a surveillance test
- Not as sensitive as PCR tests to patients with low viral loads
- After a positive test, individuals are recommended to get a CLIA-approved test
- No quality control or proficiency testing program

WHY USE SALIVA SAMPLES?

- Easier to administer than nasopharyngeal swabs
- Doesn't require medically trained personnel to collect samples
- Catches asymptomatic individuals sooner than nasal swab tests
- Non-invasive sample collection

WHY IS THE SHIELD TEST SUPERIOR?

- covidSHIELD tests for 3 genes in SARS-CoV-2 virus instead of 1 like some other tests
- This increases covidSHIELD's accuracy and increases its ability to detect variants
- SHIELD uses reagent from Thermo Fisher, which is 1 of only 3 on market that CDC recommends to identify virus variants



WHY TEST NOW THAT VACCINES ARE AVAILABLE?

- Herd immunity isn't likely to happen in 2021
- Even though vaccines are recommended, no vaccine is 100% effective
- Children under the age of 12 aren't able to be vaccinated

WHY CHOOSE SHIELD?

| | | |
|--|--------------------------|---|
| | FREE FOR SCHOOLS | The SHIELD Illinois test is free for students in Illinois public schools outside the city of Chicago |
| | FAST RESULTS | Results will be sent to the individual, organization, and IDPH within 24 hours after samples reach the lab |
| | HIGH ACCURACY | In a recent clinical trial, SHIELD Illinois' test had a 97% sensitivity and 99% specificity |
| | EASY TO USE | SHIELD Illinois' test is easy to use and doesn't require medical personnel to collect samples |
| | FDA AUTHORIZATION | SHIELD Illinois' test received emergency use authorization from the FDA and is processed in CLIA-certified labs |

RECOMMENDED MITIGATION STEPS



WANT TO LEARN MORE?

- ✓ Antigen vs. Molecular
- ✓ PCR testing
- ✓ Saliva testing
- ✓ SHIELD Illinois
- ✓ K-12 Playbook
- ✓ covidSHIELD FDA EUA
- ✓ SHIELD testimonials
- ✓ How to collect samples