

Jacksonville North Pulaski School District

Titans Return to Learn!



2021-2022

Plans will be modified as public health guidelines are updated.



A Message from the Superintendent



JNPSD Families and Scholars,

In this guide, you will find information on new procedures and protocols for all buildings, grounds and buses that have been implemented in our efforts to provide a safe learning environment for your scholars during these unprecedented times. We have also included information on:

- Methods/Steps on how our families can assist in maintaining healthy school environments;
- Procedures to follow when scholars and staff are quarantined; and
- Preparation procedures for classrooms and buildings throughout the District.

Our number one goal is to always provide our scholars the very best educational experience possible in a safe and secure environment. It is also imperative that we ensure that all of our parents, teachers and staff members are safe and secure while supporting our scholars and navigating through this challenging time.

We know that every situation is different and that there is truly not a one-size fits all approach to operating and securing all of our school buildings and district offices. The District will continue to coordinate our efforts with the Arkansas Governor's Office, Arkansas Department of Health and Arkansas Department of Education because we believe that it is imperative that we follow and share the most current guidance.

We are excited to start the school year with our scholars and staff members, and we hope that you are excited as well! We know that our scholars have a better educational experience when they are in person with our experienced faculty and staff. We appreciate you for entrusting us with your scholars' education. Please know that we will continue to seek out your input and provide you updates throughout the school year. We are the JNPSD TITANS, and we will get through this challenging time TOGETHER!

Yours in Service,

Jeremy S. Owoh, EdD
Superintendent of Schools





TITANS RETURN TO LEARN 2021-2022

WHAT FAMILIES CAN EXPECT

The safety and well-being of our scholars, staff and families is of utmost importance. During the 2021-22 school year, the Jacksonville North Pulaski School District will continue to follow health and safety measures in an effort to keep everyone safe. Parents, teachers, scholars and staff members must work together to help prevent the spread of COVID-19.

The "Titans Return to Learn" plan will focus on the social, emotional and physical health of our scholars and staff. Our plan of action will be student-centered and designed to keep scholars learning at a high level.

In the upcoming school year, district leaders will focus on academic instruction to enhance student performance and address learning loss.

JNPSD officials are developing these plans based on guidance from Governor Asa Hutchinson, Arkansas Department of Health and Arkansas Department of Education.

District plans are subject to change as situations evolve over time.

Schools will offer a continuum of options that include on-campus and remote learning.

"An ounce of prevention is worth a pound of cure."

Screening at Home

- Temperature screenings will be performed on staff, scholars and visitors each day.
- Parents are recommended to take their child's temperature each day before going to school. Anyone with a temperature of 100.4 F or higher should not go to a school site.
- Staff members are encouraged to self-screen before work each day.
- All employees and scholars should stay home if they are sick.



Arriving at School

- Masks and face coverings are required for all scholars, employees and visitors in district buildings and on school buses.
- JNPSD will provide disposable and/or cloth masks to every scholar in the district.
- Parents are permitted to provide masks for their scholar.
- Parents and visitors may have limited access to the school campus.

ON CAMPUS AND IN THE CLASSROOM



Social distancing will help limit the spread of the virus. In accordance with ADH directives, every effort will be made to limit close contact. Scholars, staff and visitors will observe a distance of 3-6 feet in as feasible a manner as possible.

Schools will consider the following strategies to maintain smaller groups in shared spaces:

- Maintain at least 3 feet of physical distance between scholars within classrooms
- Maintain at least 6 feet between scholars and adults, and between adults who are not fully vaccinated
- Implement one-way traffic throughout campus corridors
- Limit the number of occupants utilizing each restroom
- Keep scholars in smaller groups
- Where possible, keep student cohorts from mixing
- Display signage for 3-6 feet distancing throughout buildings

Elementary scholars (K-5) will eat breakfast and lunch in the classroom.

Secondary scholars (6-12) will eat breakfast and lunch in the cafeteria and outdoor areas.

A 3-foot distance between each scholar while eating is recommended.



Food drop-offs for scholars are not allowed at school.



Elementary scholars will be allowed to travel to activity classes (art, music, etc.) rather than those teachers coming to the classrooms.

General Safety Precautions Throughout the Day



- The JNPSD Maintenance Department will follow all recommended practices given by the Arkansas Department of Health. The appropriate cleaning agents and other sanitizers will be used including hospital-grade disinfectants.
- Physical barriers may be installed where social distancing is not possible.
- All scholars and staff will be encouraged to wash/clean their hands regularly.
- Hand sanitizing stations will be made available throughout all school buildings.
- Schools will limit sharing of supplies between students and disinfect between uses if sharing is unavoidable.

Water fountains will not be available for use. JNPSD encourages scholars to bring their own refillable water bottle with them to use throughout the day.

VISITORS TO CAMPUS/FACILITIES

Out of an abundance of caution, JNPSD will limit visitation to our campuses.

- 1) All visitors will be screened prior to entering any JNPSD facility. Visitors are strongly encouraged to wear masks/face coverings.
- 2) School administrators will schedule appointments for parents/guardians for approved visits to campus.
- 3) School administrators will be responsible for documenting all visitors to the building including time and area visited.

Limited visitation will be granted for the following school-related events/activities:

Parent/guardian lunch with scholar:

- * Limit 2 visitors. Parents/guardians will eat lunch with scholar inside the school cafeteria.
- * Lunch must be scheduled with a school administrator the day before OR the day of by 9:00 am.
- * Visitors will not be allowed to bring outside food or drink inside a JNPSD facility.
- * Parents/guardians who wish to eat lunch with their scholar will have the option of purchasing lunch from the school cafeteria.

Open House

JNP schools will host virtual open houses only for the 2021-22 school year unless guidance changes from the Arkansas Department of Health. Virtual open houses will be posted on the school's website and social media platforms.

Guest Speakers/ Volunteers

- * Limit 2 people per school.
- * All guest speakers and volunteers must be fully vaccinated to participate in any school-related activities.
- * All guest speakers and volunteers will be screened before entering a JNPSD facility and are strongly encouraged to wear a mask.



Sports and Extracurricular Activities



The Arkansas Activities Association will continue activities and athletics this fall/spring in accordance with the regular AAA calendar. These preparations are contingent upon compliance with all directives as issued by the Governor's Office and the Arkansas Department of Health.

The ADH guidance for masks for outdoor sports recommends they be worn when not actively participating and when there is no ample space to maintain six (6) feet of physical distance.

According to the AAA, scholar-athletes can participate in normal practices and normal games.

Tickets to all JNP athletic games must be purchased online.

- Softball
- Track and Field
- Bowling
- Golf
- Cross Country
- Baseball
- Football
- Basketball
- Volleyball
- Soccer
- Cheerleading
- Band

As of July 28, 2021, school field trips will not be allowed unless guidance changes. Virtual field trips will be considered when possible.

Assemblies, dances and rallies may be permitted if social distancing and other safety guidelines are maximized.



The Arkansas Department of Education, Arkansas Department of Health and Jacksonville North Pulaski School District are committed to ensuring the health and safety of all students. ADH will continue closely monitoring the rate of infection in the state. As public health guidelines change, JNPSD will adapt and modify plans. We will work together with our scholars and families to keep our children safe as we transition to this new approach of educating students.



Quality Instruction & Commitment to Equity

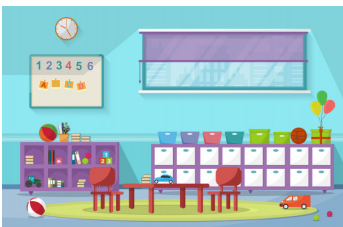
First Day of School

School is scheduled to begin on Monday, August 16, 2021. This date will only change if the Arkansas Department of Health sends updated guidance.



Parent Options

Surveys have been available for parents to complete regarding intent for the 2021-2022 school year. The deadline to submit the survey is May 2021. Parents are being offered the following options:



Blended Learning: This option will be the traditional school day with scholars and teachers on campus. All classes will be offered as normal. Technology will be utilized in certain ways to move to online or virtual learning if school closures or other situations warrant.



Virtual Learning (JNP Virtual Academy): This option is available for parents who want their children to learn remotely full-time using technology-based learning platforms. The scholars will NOT be on campus and classes will be facilitated by JNP teachers using Google Classroom, Edgenuity and other resources. Attendance will be taken and lessons will be graded as required. The virtual option is new learning -- just at home. The courses use the JNP curriculum aligned with state standards. We ask that parents choosing the virtual learning option for their children commit to this option for at least one semester. A scholar can be in the virtual academy and still participate in extracurricular activities as long as they can provide their own transportation.

Schools will work with students and families to ensure equity and access to quality instruction. Accommodations for students with disabilities, students with diverse learning needs, students who are medically vulnerable and English learners will be made as needed.



On-Site Learning

All students enrolled in JNPSD who are not enrolled in 100% online/virtual classes will participate in on-site, in-person, blended learning. This means that students will have access to the coursework for their classes in a traditional on-site classroom, as they have participated in the past, and/or through lessons uploaded by their instructors in Google Classroom.

All scholars will have access to a district-issued Chromebook device whether they are enrolled in on-site learning or virtual learning. Chromebook devices held through the summer will be serviced and reissued at the beginning of the school year. Please watch for information on the schedule from your school.

All scholars in JNPSD will be issued a district-provided Chromebook unless families choose to opt out of checking the device. The Chromebook handbook has been integrated into the district handbook.

All students in either virtual or blended will participate in the JNPSD Assessment System designed to monitor student academic growth. The assessments may be taken at school or virtually. All NWEA MAP Assessments and state assessments will be taken on site.

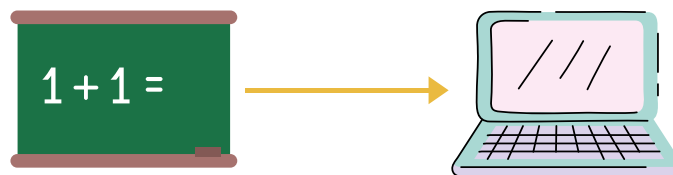


TRANSITIONING FROM IN-PERSON TO VIRTUAL LEARNING:

If circumstances dictate the need to shut down a classroom, building or the entire district due to mandates from the ADH or the Department of Education, all impacted students will switch to 100% virtual instruction. Teachers will provide daily assignments and support through the district's learner management system (LMS), Google Classroom.

BREAKFAST AND LUNCH:

Whether students learn on-site or virtually, JNPSD will continue to provide nutritious meals prepared with love and safety in mind. Breakfast and lunch will be delivered between the hours of 10:30 am and 1:00 pm to designated bus stops. A list of bus stops will be generated based upon enrollment. The list of stops with approximate times will be publicized, published and posted to the district website, social media and local media outlets prior to the first day of school.



DEVICES AND ASSOCIATED COSTS:

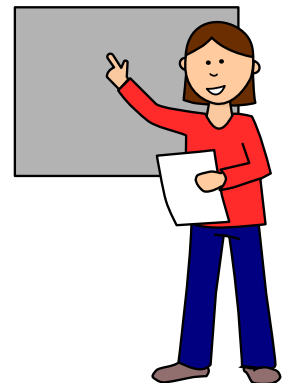
There is not a cost associated with JNPSD virtual learning. However, families who opt for online learning should plan to have Wi-Fi available at home. If you do not have access to Wi-Fi, you may contact the JNPSD Central Office at 501-241-2080 for details on how to obtain access.



ATTENDANCE AND GRADING:

Students will be expected to log on to Google Classroom daily and attendance will be taken based on student engagement and completion of work. All required assignments will be graded. The JNPSD grading policy will be followed for all scholars. To receive credit for the courses enrolled, students are expected to complete all assignments.

Grades will be calculated based on completed assignments. Scholars who are not engaging in the learning will be counted absent and all attendance regulations will apply. Students who do not complete assignments will be graded accordingly and run the risk of failing the course or grade level.



Virtual/Distance Learning



CONSIDERATIONS FOR 100% VIRTUAL OPTION:

Virtual school will be available for all K-12 scholars within the Jacksonville North Pulaski School District. There are important considerations when making decisions about enrolling students in virtual school.

Scholars can be excellent virtual school students if they have strong parental support and are:

- Self-motivated
- Independent learners
- Computer literate
- Good time managers
- Effective communicators
- Self-disciplined

Families who select the JNPSD K-12 virtual option will provide the home support needed to guide their children through the education process. Scholars who are not on grade level, need professional intervention or special services may elect to participate in virtual, but are best served by an in-person, blended learning environment.

Students who have severe underlying medical conditions, including heart or lung disease or diabetes or are at risk for severe illness may be advised to participate in virtual learning for that student's safety. All lessons will be delivered through the district's learning management system, Google Classroom. Teachers will schedule regular opportunities to communicate through video conferencing, such as Google Meet or Zoom, or phone calls to maintain social and emotional connections.

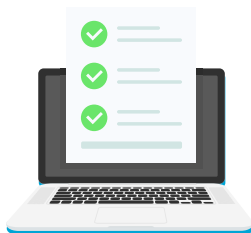
VIRTUAL INSTRUCTION:

JNPSD will utilize an online curriculum adapted and monitored by JNPSD teachers. Scholars will have the option of logging in live for synchronous lessons or those who opt for asynchronous learning may log in anytime of day or night to access units and assignments. The assignments will have short-term deadlines. Instructional formats will vary. Teachers may record direct instruction or schedule live lessons. Depending on the size of the program at each grade level, some of these teachers may be teaching 100% online and some may be teaching online and/or in-person, blended classes.



Teachers will provide daily assignments and assessments regularly via Google Classroom. Students will be expected to log in to Google Classroom daily and to submit assignments by the set deadline. A “Connect to Care” weekly check in will be available for students and parents to discuss the student’s level of engagement and completion of assignments. JNPSD teachers will provide support and instruction but students will not have the same level of direct supervision when doing independent work as they would in the on-site option. Students who are not being successful in the virtual environment due to lack of attendance, engagement or completion of assignments will need to consider requesting to return to on-site instruction at semester.

Scholars who attend Jacksonville Middle School and Jacksonville High School will be offered synchronous and asynchronous classes on a rotating A/B schedule. The school will provide schedules to scholars.



ATTENDANCE AND GRADING:

Virtual learning students will follow the same grading system and adhere to the same attendance policies as outlined in the JNPSD Student Handbook. Students will be expected to log on to Google Classroom daily, attendance will be taken daily and attendance regulations will apply. All required assignments will be graded.

The JNPSD grading policy will be followed for all scholars. To receive credit for the courses enrolled, students are expected to complete all assignments. Grades will be calculated based on all assignments. Students who do not complete assignments will be graded accordingly and run the risk of failing the course or grade level.

Elementary Virtual Academy: (K-5)

Attendance will be taken daily during the morning meeting. Cameras are required to be on during morning meetings. Teachers will take attendance and submit on the same day. Live sessions are required.

Secondary Virtual Academy: (6-12)

Virtual scholars will follow the same attendance guidelines as on-site learners. Absences will be handled according to the JNPSD handbook. All documentation for excused absences can be submitted in person or scanned and emailed to the campus attendance clerk.

Synchronous/Live Learning Days

Attendance for virtual scholars will be recorded as scholars attend Google Meets. Scholars must have cameras on to be counted present. Students who arrive late to virtual classes will be marked tardy. Log in to Google Classroom and complete the daily attendance assignment/exit activity. An attendance assignment/exit activity should be brief, content-driven formative assessment. The deadline for scholars to submit the attendance assignment will be midnight on the day of the scheduled task.

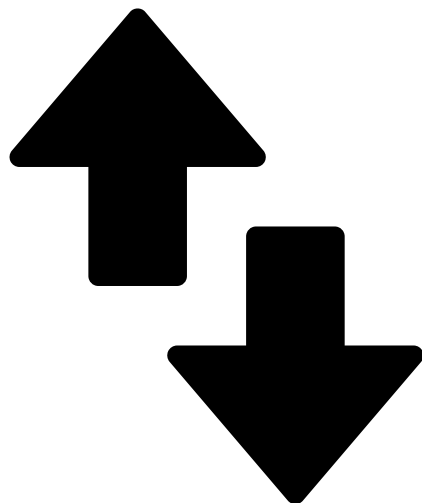


SWITCHING BETWEEN VIRTUAL AND IN-PERSON/BLENDED:

Elementary scholars (K-5) can switch methods of instruction every nine weeks. Secondary scholars (6-12) have the option of switching their method of instruction every semester.

A parent or guardian may make a request in writing to the scholar's principal requesting a change from virtual learning to in-person/blended learning. The parent/guardian must provide documentation that the scholar can no longer be supervised in the home due to a change in employment or other unforeseeable circumstances. The change request will be reviewed by administration to determine the feasibility of the requested change. The scholar will continue in virtual learning until such time as the decision about the request has been made and parents notified.

Additionally, a scholar will be switched from in-person to 100% virtual instruction if the scholar or someone in their household tests positive for COVID-19, or if the scholar has been in close contact with someone who has tested positive for COVID-19. If a scholar is granted a change from virtual to on-site or vice versa, they may be assigned different teachers based on scheduling and class size limitations.



PARTICIPATION IN AAA ACTIVITIES:

JNPSD will offer a full-time virtual experience for students in grades K-12 on all campuses. A virtual student takes all classes through online/at home and only comes to campus for scheduled/approved activities.

These students are supervised by JNPSD teachers. Secondary virtual learners who participate in the JNPSD Virtual Academy, regularly attend school practice and activity in person and meet all other eligibility requirements, will be allowed to participate in AAA activities (band, athletics, etc). Transportation will not be provided. Families must provide transportation to on-campus activities.

If a student withdraws from JNPSD to be homeschooled, the student will be ineligible to participate in an interscholastic activity for a minimum of 365 days after the date of withdrawal.



GUIDELINES AND EXPECTATIONS:

Minimally, students will be asked to adhere to the following guidelines:

- **Follow school dress code for the sessions**
- **Set up a computer and camera so that their back is to a wall and the camera is only viewing the student and the wall**
- **Minimize distractions by shutting doors, using mute when not speaking, etc**
- **Do not plan to eat, care for animals, children, etc. during the meeting**
- **Do not interrupt others when they are speaking**
- **Do not monitor your phone or other devices during the conference or lesson**
- **Do not type on the keyboard or use other applications on your computer during the meeting**
- **Speak up. Participate appropriately while giving other people ample time to participate**
- **Stay seated and stay present**
- **Choose a quiet location**
- **Join meeting early to ensure Wi-Fi is working. Test your equipment and access prior to the class session.**
- **Establish how to use mute and other features in the system**
- **Google Hangout or Meets utilized must be scheduled via a Google Calendar appointment or email.**



WAYS PARENTS CAN HELP AND GET HELP:

Parents will be asked to commit to the following 12 Guidelines if they opt into virtual instruction:

- **Establish routines and reinforce expectations**
- **Attend virtual school orientation**
- **Define the physical space for your child's study**
- **Monitor communications from your children's teachers, email them with concerns/questions**
- **Attend check-ins scheduled with your child's teacher/virtual learning advisor**
- **Take an active role in helping your children process their learning**
- **Establish times for quiet and reflection**
- **Encourage physical activity and/or exercise**
- **Remain mindful of your child's stress or worry**
- **Monitor how much time your child is spending online**
- **Keep your children social but set rules around their social media interactions (Go Guardian or Bark)**
- **Parents are responsible for providing an updated email and phone number.**

Parents/scholars can email their teacher. The teacher can respond by email and set up an appointment with the parent/scholar virtually if the need arises. Each teacher should have a set time to be available to the virtual scholars.

CHROMEBOOK REPAIR & VIRTUAL HOTLINE:

The JNPSD Technology Department has developed a system by which parents/scholars can receive assistance troubleshooting technology issues related to the use of the district issued Chromebooks.

The troubleshooting guide is available online. In some cases, a tech specialist may “remote in” to the Chromebook to solve the issue. If all efforts to troubleshoot fail, parents may contact the school to set up an appointment to bring in the faulty device and trade it in for a working device.



Questions about the virtual work posted in Google Classroom or Assigned by your child’s teacher? You may email your child’s teacher.



Vaccinations

COVID-19 vaccinations are the most effective strategy to protect people from getting sick and to reduce the risk of people spreading COVID-19.

The Jacksonville North Pulaski School District will encourage its families to get vaccinated using the following methods:

- * Initiating vaccination campaigns**
- * Hosting informational sessions with local medical professionals**
- * Partnering with local community based programs to sponsor vaccination clinics at local school sites**

Prevention, Preparedness and Response

The Jacksonville North Pulaski School District will supply each school and work site with personal protective equipment. (hand sanitizer, sanitizing wipes, gloves, masks, thermometers, cleaning supplies etc.) Safety screens/guards will be installed in each school's front office and attendance offices.

ADH and CDC COVID-19 prevention signage will be posted throughout school buildings to remind scholars and staff of measures, such as proper handwashing, wearing masks appropriately and social distancing.

Training and Communication

JNPSD teachers and staff will participate in back-to-school crisis training which will consist of COVID-19 safety guidelines.

Additionally, the district will release a series of videos and social media promotions to help parents understand what school could look like in the fall, the importance of taking the scholar's temperature prior to leaving home and the proper way to wear a mask.

COVID-19 EXPOSURE PROTOCOLS:



SUSPECTED CASE INVOLVING A SCHOLAR

If a scholar complains of being sick, he or she will report to the school nurse for further observation.

Scholars will be sent home if the temperature is above the allowed limit in ADH guidance. A designated area will be used to isolate any scholar who has a temperature above 100.4 F or any scholar who becomes sick during the school day. The scholar will need to be picked up no later than one hour from the time the campus contacts the student's parent or guardian.

Other students will be removed from the classroom and taken to an alternate location on campus so that the classroom can be thoroughly cleaned and disinfected. If the scholar is exhibiting no other symptoms of COVID-19, the scholar will need to be fever-free for 48 hours prior to returning to school.

If a scholar tests positive for COVID-19 or is exposed to someone who has the virus, the parent/guardian should contact the school immediately.

The school designee will contact the district point of contact (Lorri Stinnett) who will then notify the Arkansas Department of Health to report the case and provide a list of probable close contacts. The district point of contact will notify each probable close contact per guidance from the Arkansas Department of Health.

Typically, anyone who is identified as a "close contact" of a COVID-19 positive case, is required to quarantine for 10 days from the last known date of contact with the infected person.

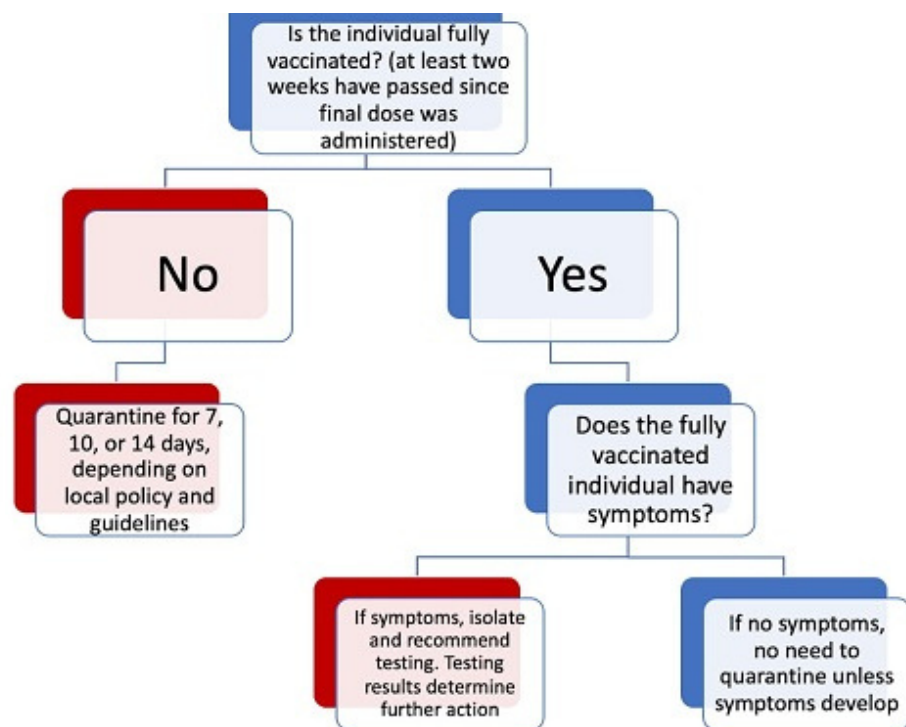
Point of Contact:
Lorri Stinnett
lstinnett@jnpsd.org
501.813.7285

Close Contact Determination and Responses

A close contact is defined as an individual confirmed to have been within six feet for 15 cumulative minutes or longer with a 24-hour period during the infectious period of a person who has tested positive for COVID-19.



1. Individuals who have previously tested positive for COVID-19 and recovered and who are subsequently exposed to someone with COVID-19 within three months of their original diagnosis do not have to stay at home or get tested again, as long as they do not develop new symptoms. Individuals who develop symptoms again within three months of their first instance of COVID-19 should see their physician as they may need to be tested again if there is no other cause identified for their symptoms.
2. Individuals exposed to a confirmed case of COVID-19 will not need to be quarantined if they have no symptoms and both the infected and exposed individual consistently and correctly were wearing a mask.
3. Individuals who are fully vaccinated may not have to quarantine. To help determine whether a fully vaccinated individual should quarantine, refer to the following chart:



COVID-19 CONFIRMED CASE/NOTIFICATION

JNPSD will follow the **Arkansas Ready for Learning response protocol** for all cases in which we are notified that an individual has tested positive for COVID-19. We will initiate the following procedures which include without limitation:

- District Point of Contact calls school hotline or is contacted by ADH
- District compiles a list of probable close contacts with contact information and shares with ADH Contact Tracer upon request
- District notifies probable close contacts to self-quarantine immediately for 10 days from the last date of contact with the positive case.
- The isolation area and suspected employee's or student's work area/classroom, and all common areas recently touched by the infected person, will be thoroughly cleaned and sanitized.
- In accordance with DESE and ADH guidance, all confidentiality requirements of HIPPA, FERPA and ADA will be followed.
- District communication will be provided to staff and the parents of students who came in contact with a COVID-19 positive student or staff member. The identity of individuals cannot be released.
- Individuals who come in close contact with a COVID-19 positive individual will be asked to self-quarantine for 10 days and may not return to campus during this time. Students will transition to remote learning during the 10-day waiting period.
- Individuals who have tested positive for COVID-19 will be required to submit a medical certification from a physician or ADH prior to returning to school/work.

JNPSD Special Education School



Special Education Services and Support

The COVID-19 pandemic and its impact on scholars with disabilities must be considered for each child based on the individual needs and how they will access the special education services and supports as outlined in their Individualized Education Program. (IEP)

Each educational provider will need to ensure students with disabilities have equal access to the curriculum as compared to their peers. Any scholar who receives instruction virtually (either through Parent choice or in the event of a school closure) will have a Remote Learning Plan in place.

Special education teachers and providers will review IEP plans and determine if changes need to be made to the IEP due to any changes in the student's needs. An IEP meeting will be scheduled following the reviewing process. Each scholar's IEP should be reviewed by September 20, 2021.

Inclusion Support-Virtual Instruction

There are some scholars who are provided services through inclusion or push-in services. The general education teacher is primarily responsible for the creation of virtual lessons and assignments. The special education teacher's role will be to modify any assignments or assessments for virtual students and to provide virtual support for each scholar on a weekly basis. The following is a list of expectations of support for students with an IEP who will receive instruction virtually.

- **Classroom teachers will provide assignments to the SPED teacher one week in advance to allow time for modifications for the SPED students according to the IEP.**
- **SPED teachers will provide modified assignments to the teacher or assume responsibility for uploading the assignments to Google Classroom each Monday by 7:00 am.**
- **SPED teachers will develop a schedule (to be approved by building principal) that outlines weekly instructional sessions for students (sessions can be small groups of 2-6 or individual student sessions)**
 - **SPED teacher should provide targeted instructional support to students on grade level instruction.**
 - **SPED teacher will also provide target instruction during these sessions based on students' IEP goals.**
 - **Each student should have at least two sessions each week. (one for grade level content and one for IEP goals)**
 - **Classroom teacher will add SPED teacher as an additional teacher in Google Classroom.**
 - **SPED teachers will collaborate with general education teachers and assist with creating lessons as needed.**
 - **SPED teacher should have a Google Classroom or site that he/she uses for IEP goals, support and instruction.**

Resource Support-Virtual Instruction



Some students will be provided services through resource or push-out services. If a student receives reading and/or math instruction through pullout from the SPED teacher, the SPED teacher will be responsible for creating lessons, activities and assessments for students. If the SPED teacher supports the instruction provided by the general education teacher during pull out, the SPED teacher will follow the plan for inclusion students.

For students who receive English Language Arts (ELA) and math instruction from the special education teacher:

- **SPED teachers will create assignments, lessons and assessments and provide them to teachers or assume responsibility for uploading lesson plans by 7 am.**
- **SPED teachers will develop a schedule to be approved by the building principal that outlines weekly instructional sessions for students.**
 - **Frequency and time for these sessions should mimic the onsite pullout schedule**
 - **SPED teachers may implement distance learning and include virtual students in onsite instructional pullout groups via Zoom, Google Meet, or another approved platform.**
 - **Classroom teacher will add SPED teacher as an additional teacher in Google Classroom.**
 - **SPED teachers will collaborate with general education teachers and assist with creating lessons as needed.**
 - **SPED teacher should have a Google Classroom or site that he/she uses for IEP goals, support and instruction.**
 - **Lessons should be uploaded in Google Classroom on a daily basis.**

Self-Contained Virtual Instruction

Some scholars receive services through a self-contained special education class. These students not attending school onsite will receive instruction via instructional packets, virtual lessons or a combination of both.

Guidelines for instruction via instructional packets:

- **Packets will be provided in two week increments and parents may pick up the packets or have them mailed.**
- **Teachers will be responsible for coordinating delivery of packets for the students. (Paraprofessionals may assist with this.)**
- **Instructional packets should include the following:**
 - **Cover page outlining the contents of the packet and a timeline for completion**
 - **Explicit instructions on or attached to each assignment**
 - **Time required for the assignments should be developmentally appropriate for the student and listed on the instruction sheet**
 - **If assignments require special materials to complete (crayons, scissors, etc.) the teacher must provide those materials to parents.**
 - **These items should be requested as supplies from the parents but will be sent home if the parent can't/doesn't provide them**
 - **Manipulatives or other resources typically provided at school will be provided for the student.**
 - **Each assignment must correspond with the goals in the student's IEP**
 - **This means that each packet should be individualized**
 - **Students with identical goals may have some of the same assignments/activities.**
 - **Each packet should have activities that address all of the goals in the IEP.**
 - **Students do not necessarily have to have an activity for each goal every day but they should have activities each week that address the current goals they are working toward.**

- **SPEd teachers will develop a schedule to be approved by the building principal that outlines weekly instructional sessions for students.**
 - **Sessions should provide instructions for students on IEP pals and assignments for that week.**
 - **Time and frequency for these sessions should be adequate for instructional support.**
 - **SPEd teacher may implement distance learning and include virtual students in onsite instructional pullout groups via Zoom, Google Meet or another approved platform.**
- **Teacher will conduct discrete trials with students to assess progress of students toward IEP goals.**
 - **Teacher will modify instructional packets and/or online instruction based on the data obtained through discrete trials.**
 - **Teacher will model the process for parents so that parent/guardian can collect data as well.**

Related Services Support

- **Therapists will provide services for teletherapy via Google Meet. Consultation with parents should be held on a weekly basis for Medicaid-eligible students.**
- **Use Google Calendar to schedule therapy sessions, create a Google Classroom for videos and instructional work. This should be updated weekly.**
- **Create instructional packets for students who will not be able to access therapy online. If parents would rather have instructional packets, the school will mail those.**
- **If virtual instruction and instructional packets do not meet the students' needs, then parents should be given the option of bringing their child to the school for therapy at a mutually agreed upon time.**

On-Site Instruction

Please refer to the 2021-22 Titans Return to Learn Plan. The school day will operate as normal as possible with all classes implementing ADH and ADE guidance.

Compensatory Services

Teachers and therapists will review compensatory minutes owed due to services not being provided during school closure. A plan will be developed to make up compensatory time owed.

Note: Compensatory services are not a guaranteed 1:1 make-up. (missing 1 week of services does not necessarily require 1 week of compensatory ed). The IEP team will look at the learning that was lost due to lack of instruction and determine what services are needed to ensure the student can make progress toward their goals.

Evaluations

Students who are referred for Special Education evaluations and/or re-evaluations will be required to come to campus in order for testing to be completed.

Conferences

IEP meetings will be held face-to-face unless a parent requests for the meeting to be held virtually.



Homebound Support

Homebound placements will be determined on a case-by-case basis and aligned to DESE guidelines.

Day Treatment

- **Conferences will be held with the day treatment agency staff and parents' face-to-face meetings will be held with district personnel.**
- **Conference paperwork will be provided to parent and appropriate agency personnel.**
- **Communication with agency staff will be ongoing via phone & email.**

Private Schools

Private School conferences will be conducted face-to-face with parents and staff from student's zoned school.

school

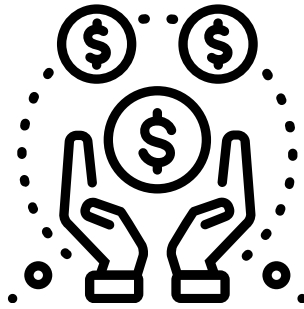
Future Conferences

As each teacher holds a conference, attention should be given to the section of Considerations of Special Factors: Other Factors. A statement can be included that...in the event of a school closure, the student will receive instruction via distance learning and/or alternate methods of instruction.

This is a fluid document. As updates from OSEP, DESE, ADE and the Central Office are provided this document will be updated.



Esser Funding



ARP ESSER funds are provided to state educational agencies and school districts to help safely reopen and sustain the safe operation of schools and address the impact of the coronavirus pandemic on the nation's students.

Jacksonville North Pulaski School District is committed to engaging stakeholders in the decision making process. Stakeholder surveys are used to inform the funding and procedural decisions of the Ready for Learning Committee. Results of the stakeholder survey are below.

What are the most pressing educational needs for students in the school district?									
	Student attendance or engagement	Mental health and behavioral needs	Safe and healthy classrooms	Student dropout	Loss of instruction in 20-21 school year	Access to high quality teachers	Access to high quality instruction	Access to wi-fi or broadband	Access to technology
Highly Concerned	82.1%	63.3%	63.3%	61.5%	70.4%	56.3%	56.7%	45.0%	45.5%
Concerned	17.9%	36.7%	26.7%	34.6%	22.2%	31.3%	30.0%	50.0%	36.4%
Concerned for Some	0.0%	0.0%	0.0%	0.0%	0.0%	0.0%	0.0%	0.0%	0.0%
No Concern	0.0%	0.0%	10.0%	3.8%	7.4%	12.5%	13.3%	5.0%	18.2%

What are the most pressing educational needs for educators in Arkansas?

	High quality curriculum	High quality digital curriculum	Safe and healthy classroom	Meaningful professional development	Additional help to address non-educational needs of students	Expectations to teach both in-person and virtual students
Highly Pressing Need	68.0%	63.6%	69.6%	80.0%	77.3%	65.0%
Somewhat Pressing	0.0%	0.0%	0.0%	0.0%	0.0%	0.0%
Sometimes a Need	24.0%	27.3%	17.4%	15.0%	18.2%	20.0%
Not a Need	8.0%	9.1%	13.0%	5.0%	4.5%	15.0%

Is there a group of students that you believe were disproportionately impacted due to COVID-19 that the ADE should specifically address?

	Students from low-income families	Students of color	English Learners	Children with disabilities	Students experiencing homelessness	Children in foster care	Migratory students
Highly Impacted	63.6%	45.2%	58.1%	62.5%	65.6%	45.2%	45.2%
Somewhat Impacted	36.4%	45.2%	38.7%	28.1%	31.3%	41.9%	41.9%
Not Impacted	0.0%	9.7%	3.2%	9.4%	3.1%	12.9%	12.9%

The ESSER Fund Committee prioritizes scholar learning and input from the community. The ESSER II budget is below.

<i>Project</i>	SUM of Budget Amount	% of Total Budget
Carpet Replacement	\$ 10,000.00	1.06%
Instructional Facilitator	\$ 354,687.50	37.59%
Meeting Microphones	\$ 3,600.00	0.38%
Professional Learning Communities	\$ 432,000.00	45.78%
Security Camera Relocation	\$ 23,000.00	2.44%
Technology Equipment Repairs	\$ 8,500.00	0.90%
Therapy Equipment	\$ 25,000.00	2.65%
Transportation Cameras	\$ 86,823.01	9.20%
Grand Total	\$ 943,610.51	100.00%

**FREQUENTLY ASKED QUESTIONS
2021-2022**





General Questions



What is the first day of school for students?

School is scheduled to begin on Monday, August 16, 2021. This date could change depending on guidance from the Arkansas Department of Health and Arkansas Department of Education.

What will Open Houses look like in August?

JNP schools will host virtual open houses only for the 2021-22 school year, unless guidance changes. Virtual open houses will be posted on the school's website and social media platforms.

Will the school provide scholars with a computer or internet device?

Yes. JNP scholars have access to Chromebooks as part of the 1:1 program. Chromebooks will be loaned to scholars (who request them) for virtual learning.

How will children socially distance in their classrooms?

In accordance with ADH directives, every effort will be made to limit close contact between students. Class arrangements will be used to maximize spacing between students and teachers to the extent possible.

Can I walk my child into the school?

No. Visits to the school will be limited to essential activity.

Can I visit the school, classroom or eat lunch with my student?

Will parents and visitors be allowed in the buildings?

Yes, a limited number of visitors will be allowed inside school buildings. Parents will be allowed to eat lunch with their scholar. Limit 2 visitors. Lunch must be scheduled with school officials the day before or day of by 9:00 am.

Will bus transportation be provided?

Yes, bus transportation will be provided for all JNP scholars. However, if virtual students wish to participate in extra-curricular activities (athletics, band, etc) the parent will have to provide transportation to those activities.



General Questions



Will buses make more trips to reduce the number of students on the bus?
No, not at this time.

Will class sizes be reduced?
No, not at this time.

How do you intend to provide a safe, sanitized environment?
The janitorial staff will use CDC guidance on cleaning and comply with the Arkansas Department of Health sanitation and safety directives.

What happens when a classmate/teacher tests positive for COVID-19?
The ADH controls the procedures to be followed once a teacher or student tests positive. JNPSD schools will follow the guidance and direction provided to us by the ADH.

How will parents be notified of positive tests in school and possible exposure?
Letters will be sent home to all individuals who were possibly exposed. Phone calls will also be made to parents.

Will temperatures be taken regularly?
Yes. Temperature screenings will be performed on staff, scholars and visitors each day.

Can students attend virtual and blended instruction from one week to another?
No, scholars will not be allowed to switch from virtual to blended learning each week.

Is Pre-K offered virtually?
No. Pre-K will be on-site only.



General Questions



Will elementary students have Art, Music and P.E.? (virtual)

Virtual students will have activities with videos in Google Classroom for art, music, library and p.e.

How will 504 students receive services? (virtual)

Students will continue to receive accommodations included in their 504 plans. Teachers and paraprofessionals will provide instruction through Google Classroom and other resources.

How will special education students receive services? (virtual)

Students will continue to receive the minutes included in their IEP. Teachers and paraprofessionals will provide instruction through Google Classroom and other resources.

Will face coverings or masks be mandatory?

Yes. Masks and face coverings are required for all scholars, employees and visitors in district buildings and on school buses.

Will elementary students have recess?

Yes, but recess may not look the same. We will follow current Arkansas Department of Health guidelines.

Can students bring their lunch to school?

Yes





General Questions



Will AP courses be offered virtually?

Yes. The classroom teacher will provide support through Google Classroom and students will have access to College Board online curriculum materials and support.

Will my child receive therapy services in a virtual classroom?

Speech, physical therapy, occupational therapy and mental health services will be offered through teletherapy with parent consent. Dyslexia services will be offered through live sessions such as Zoom and/or Google Classroom.

What is virtual school?

The Jacksonville North Pulaski virtual school option keeps scholars enrolled in JNPSD and activities are supervised by JNP teachers.

What is homeschooling?

Homeschooling is an option where families take full responsibility for the education of their children and the children are not enrolled in JNPSD.

What is the Titan Homeschool Academy?

JNPSD does offer the Titan Homeschool Academy for families who want their children to remain homeschooled with curriculum content provided by JNPSD using an online service provider. The child would be enrolled in JNPSD for courses taken through the content provider but the child would remain as a homeschool scholar. Families interested in this option should contact Amy Arnone at aarnone@jnpsd.org or 501-241-2080.



Additional Questions for Pre-K

Will water fountains be accessible to students during the school day?

No. All Pre-K scholars will be provided a personal water bottle to use during the school day.

What will Pre-K look like if AMI Days are needed due to school closures?

Students will utilize specific take home materials and a virtual learning website for instruction.

Will my child receive therapy services in the event of school closure?

Yes. Wilbur D. Mills will provide all therapy to students during school closure.

Will Pre-K students have outdoor gross motor?

Yes. We will follow current ADH and DHS guidelines for outside play.

Will backpacks be allowed at school?

No, backpacks will not be allowed in Pre-K. Preschool parents will not have to purchase school supplies this year. The school will provide everything the scholar needs.

Does my child need a blanket for naptime?

No. Blankets will be provided by the school.



Questions about JNPSD Virtual School

How will school take attendance?

In the secondary schools (grades 6-12), the schools will take attendance by filling out a Google form every day that the student will access on their Google Classroom. The form will be located in the Virtual School Google Classroom for all virtual students. The scholars will login through the Google form for the day. This will be the attendance for the secondary scholars for each day. This will serve as their "daily check in."

In the elementary schools (grades K-5), Ed Puzzle will be the vehicle for taking attendance and will be the elementary student's daily check in. Attendance will be taken as students log into the EdPuzzle videos. Scholars will also be held accountable for completing and turning in practice work and grade work on the due dates assigned.

Can my child change from virtual school to building school at any time?

No. Elementary scholars (K-5) can switch methods of instruction every nine weeks. Secondary scholars (6-12) have the option of switching their method of instruction every semester.

A parent or guardian may make a request in writing to the scholar's principal requesting a change from virtual learning to in-person/blended learning. The parent/guardian must provide documentation that the scholar can no longer be supervised in the home due to a change in employment or other unforeseeable circumstances. The change request will be reviewed by administration to determine the feasibility of the requested change. The scholar will continue in virtual learning until such time as the decision about the request has been made and parents notified.

Questions about JNPSD Virtual School

What if my child misses his/her daily check in?

Every effort will be made by the scholar to check in daily. Failure to check in will result in an accompanied absence. Any absence will be marked UNEXCUSED unless accompanied by the documentation as outlined in the JNPSD Student Handbook. However, if the scholar does not check in for three days, then communication will be made by the Point of Contact Person at the school to the parent/guardian through phone call, letter and/or email. If a scholar fails to check in for a period of two weeks, that scholar will be dropped from school by the school attendance secretary.

How will grades be given?

Virtual learning students will follow the same grading system as outlined in the JNPSD Student Handbook. To receive credit for the courses enrolled, students are expected to complete all assignments. Grades will be calculated based on all assignments whether completed or not. Students who do not complete assignments will be graded accordingly and run the risk of failing the course or grade level.

Will virtual scholars have different assignments than in-class scholars?

Every effort will be made for the virtual school students and the traditional school students to have the same assignments and receive the same work/grade. This is to make any possible transition from virtual school to traditional school seamless. Virtual scholars may have assignments that are posted 24 to 72 hours later than face-to-face scholars to allow teachers to make necessary adjustments to assignments and lessons for virtual students.

How can I communicate with my classroom teacher if I have a problem?

If you have any instructional issues or problems, feel free to email your classroom teacher or set up a Google meeting with them.

Questions about JNPSD Virtual School

When are assignments due for virtual students?

All assignments for the week will be due by Sunday at midnight every week. The teachers will use these assignments to grade, assess and look for any assignments that have not been completed OR even attempted.

What is the mandatory content that we will utilize?

The JNPSD approved curriculum will be used for all core classes.

What is the main method that will be used to communicate with parents?

The main method to contact all virtual scholars and their parents/guardians will be email. Phone calls will also be made (to the parents/guardians) and letters can and will be sent out as well.

What are the parent/guardian responsibilities?

Provide support for your children by adhering to the 10 Guidelines:

- Establish routines and reinforce expectations
- Attend Virtual School Orientation
- Define the physical space for your child's study
- Monitor communications from your child's teacher
- Attend check-ins scheduled with your child's teacher/advisor
- Take an active role in helping your children process their learning
- Establish times for quiet and reflection
- Encourage physical activity and/or exercise
- Remain mindful of your child's stress or worry
- Monitor how much time your child is spending online
- Keep your children social but set rules around their social media interactions (Go Guardian or Bark)

Parents are responsible for providing an updated email and phone number.

Questions about JNPSD Virtual School

Will breakfast and lunch be provided to virtual school scholars?

Whether students learn on-site or virtually, JNPSD will continue to provide nutritious meals prepared with love and safety in mind. Breakfast and lunch will be delivered between the hours of 10:30 am - 1:00 pm to designated bus stops. A list of bus stops will be generated based on enrollment. The list of stops with approximate times will be publicized, published and posted to the district website prior to the first day of school.

Will virtual scholars be issued a Chromebook? If so, how many will they receive?

All students will have access to a district-issued Chromebook device whether they are enrolled in blended learning or virtual learning. JNPSD will schedule a date for Chromebook checkout prior to school starting on August 16. During that time, parents/guardians will be able to fill out necessary paperwork and obtain any materials the virtual scholar may need for the upcoming school year.

What happens if a virtual scholar has a Chromebook in need of repair?

The JNPSD Technology Department has developed a system by which parents/scholars can receive assistance troubleshooting issues related to their district-issued Chromebook. The troubleshooting guide is available online along with a form to request assistance. In some cases, a tech specialist may "remote in" to the Chromebook to solve the issue. If all efforts to troubleshoot fail, parents may contact the school to set up an appointment to bring in the faulty device and trade it for a working device.

Questions about JNPSD Virtual School

What guidelines/expectations for students will we put in place for virtual learning?

Virtual school scholars should adhere to the following etiquette for online conferences and meetings:

- Follow school dress code for the meeting
- Set up your computer and camera so your back is to a wall and the camera is only viewing you and the wall
- Minimize distractions by shutting doors, using mute when you are not speaking, etc.
- Do not plan to eat, care for animals, children etc, during the meeting.
- Do not interrupt others when they are speaking.
- Do not monitor your phone or other devices during the conference or lesson.
- Do not type on the keyboard or use other applications on your computer during the meeting.
- Speak up. Participate appropriately and give other people ample time to participate as well.
- Stay seated and stay present
- Choose a quiet location
- Test your equipment and access prior to the appointment
- Establish how to use mute and other features in the system
- Google Hangout or Meets must be scheduled via a Google Calendar appointment or email.





FAQ - Titan Athletics



Will Titan sports continue for the 2021-2022 academic school year?

According to the AAA, scholar-athletes can participate in normal practices and normal games.

Who is responsible for implementation of the directive?

It is the responsibility of the local school district administration to monitor implementation of the directive from the Arkansas Department of Health.

Are the directives different for each sport?

Yes. The sports are grouped into two categories: Close-Contact and Limited-Contact Team Sports. Schools must follow the directives that specifically apply to each category.

What sports are in the close-contact team sports category?

Basketball, Football, Cheerleading, Volleyball and Soccer.

What sports are in the limited-contact team sports category?

Baseball, Softball, Golf, Track & Field, Cross Country and Bowling.

Can you use a ball in the close-contact team sports?

Yes, with restrictions. Participants can use a ball as long as the participants maintain the 12 feet distancing rule.

The Close-Contact directive states that participants should use their own equipment if possible. Can they use school equipment?

Yes, as long as the equipment is sanitized between uses.

The Limited-Contact directive states that participants should use their own equipment if possible. Can they use school equipment?

Yes, if shared equipment is used, disinfection is required frequently during each event or between each use.



FAQ - Titan Athletics



Can close-contact team sports use agile dummies, ropes, ladders, boxes, etc on the ground for agility drills?

Yes. All equipment must be sanitized between practice.

Do close-contact team sports have to follow the acclimatization protocol as issued by the AAA Sports Medicine Advisory Committee?

Yes.

If a student is involved in more than one close-contact team sport, do they still have the same acclimatization time limitations for practice?

Yes, the guideline regarding the time limit pertains to a student-athlete per day regardless of the number of activities he/she participates in.

Are students required to have an up-to-date physical?

Yes. According to AAA bylaw, physicals are valid for 12-15 months.

Will students in virtual school be allowed to participate in extracurricular activities? (clubs, athletics, band)

Yes. Students (7-12 grades) registered in virtual learning may also participate in extracurricular activities, following guidelines of their respective activity as issued by the coach and AAA. Transportation to practices must be provided by the parent.