

COVID-19 SCHOOL SYMPTOM SCREENING FLOWCHART

Student with Symptoms of Infectious Illness

Had **close contact*** (within 6 feet for a total of 15 minutes or more) with a person who has COVID-19?

YES

NO

*Note: Asymptomatic people with recent close contact with someone with COVID-19 should quarantine. See [When to Quarantine](#) for more information.

Attends a school with **Moderate Risk of Transmission** or higher according to the CDC's [Indicators for Dynamic School Decision-Making](#)?

YES

NO

Results of COVID-19 testing?

Negative or No Test Result

Positive Test Result

Positive or No Test Result

Negative Test Result

How long to stay home?

Stay home and quarantine for 14 days after last contact with a person who has COVID-19

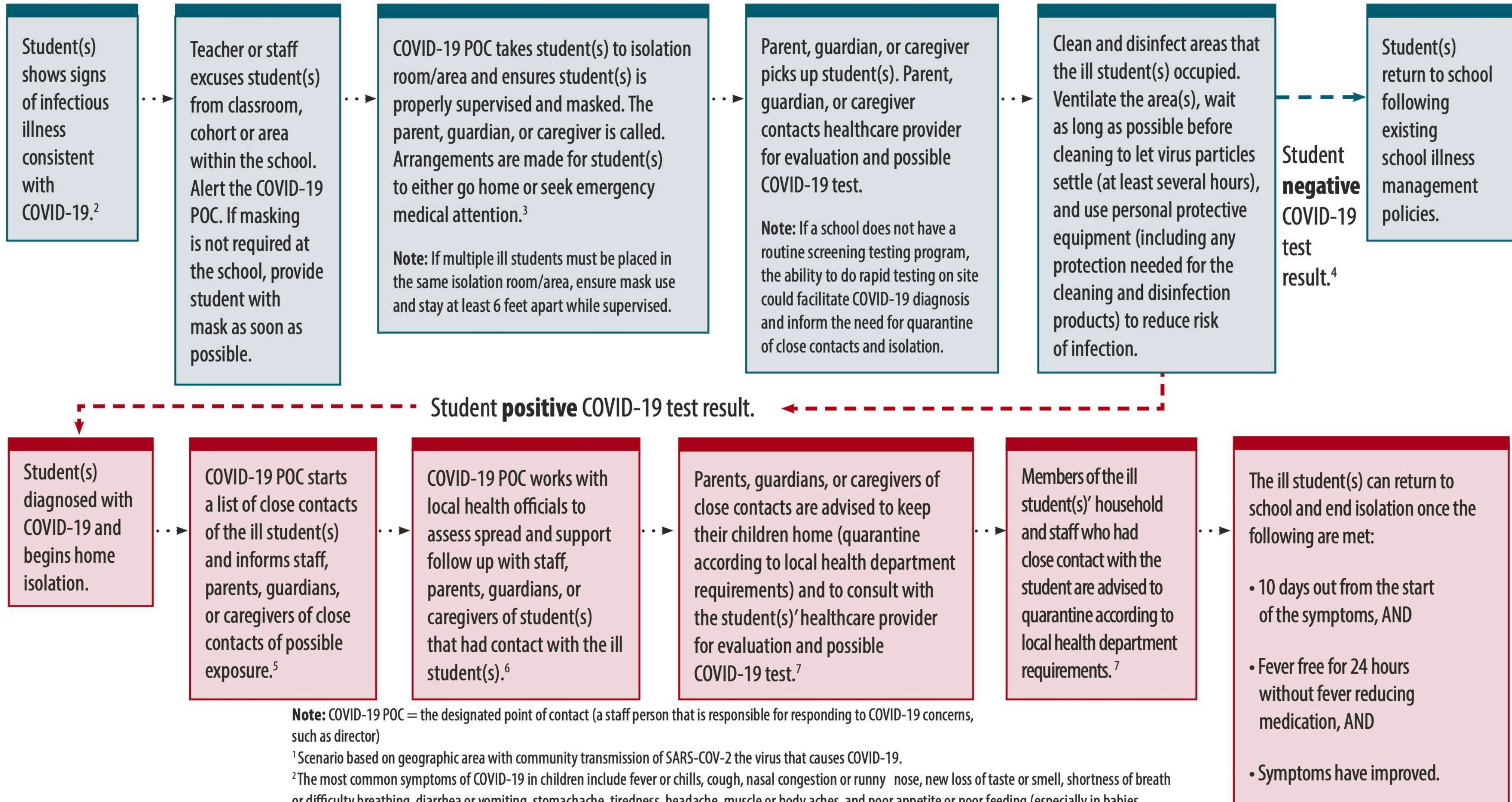
Stay home for at least 10 days after symptom onset + symptoms have improved + 24 hours without fever and no use of fever reducing medicine

Stay home until symptoms have improved according to existing school policy, typically 24 hours without fever and no use of fever reducing medicine



cdc.gov/coronavirus

WHAT TO DO IF A STUDENT BECOMES SICK OR REPORTS A NEW COVID-19 DIAGNOSIS AT SCHOOL¹



Note: COVID-19 POC = the designated point of contact (a staff person that is responsible for responding to COVID-19 concerns, such as director)

¹ Scenario based on geographic area with community transmission of SARS-COV-2 the virus that causes COVID-19.

² The most common symptoms of COVID-19 in children include fever or chills, cough, nasal congestion or runny nose, new loss of taste or smell, shortness of breath or difficulty breathing, diarrhea or vomiting, stomachache, tiredness, headache, muscle or body aches, and poor appetite or poor feeding (especially in babies under 1 year old).

³ Schools that do not have a universal mask requirement could require masking by students, teachers, and staff if they are experiencing onset of upper respiratory infection symptoms at school while waiting to be picked up or leave the school.

⁴ With no known close contact.

⁵ Close contact is defined as someone who was within 6 feet for a total of 15 minutes or more within 2 days prior to illness onset, regardless of whether the contact was wearing a mask. See exception in the definition for the exclusion of students in the K-12 indoor classroom: <https://www.cdc.gov/coronavirus/2019-ncov/php/contact-tracing/contact-tracing-plan/appendix.html#contact>

⁶ To the extent allowable by applicable laws regarding privacy.

⁷ CDC guidance provides that people who are fully vaccinated and do not have COVID-19 symptoms do not need to quarantine, but should get tested after an exposure to someone with COVID-19.



cdc.gov/coronavirus