

Chilton Independent School District 2021-2022 Continuity of Services Plan

Project A.N.C.H.O.R.S. Away!

(Academics Nurtured with Compassion, Hope, Optimism, Resilience, and Safety)



VISION:

Chilton ISD students will transcend socio-economic limits to achieve sustainable success in an evolving society.

MISSION:

The mission of Chilton ISD is to develop learners who are able to:

- Communicate proficiently
- Create innovatively
- Think Critically
- Reason Logically
- Compete Globally

This plan was developed to govern the Chilton ISD Continuity of Services. Thanks to Chilton ISD district and department leaders, the Community Re-Entry task force, and the Board of Trustees for working as a unit to craft this plan.



“Lighthouses are endlessly suggestive signifiers of both human isolation and our ultimate connectedness to each other.” - Virginia Woolf

Over the past few months, the world has presented several crises for us to navigate: the coronavirus pandemic, political unrest, issues of social injustice, and the uncertainty of life as we have known it. However, I truly believe that there is **promise** on the other side of every **problem**. Unfortunately, the promise is often hidden by the storms that engulf our reality.

Though life is uncertain, the Chilton I.S.D. intends to serve as a Lighthouse for the community. A lighthouse is often seen as a towering vertical structure in a horizontal world with the responsibility of being a beacon of hope. The Chilton I.S.D. is committed to serving the community as a beacon of hope as we navigate these troubling times. Though we have been isolated for a period, we are working to develop a plan that will allow us to safely reconnect.

Thank you for your continued patience and understanding as we work to ensure the safety, academic, social, and emotional growth of our students. As a school, community, and family, we will refuse to sink. We must make #EveryMomentMatter.

Brandon K. Hubbard, Superintendent of Schools

This plan was developed to govern the Chilton ISD Continuity of Services. Thanks to Chilton ISD district and department leaders, the Community Re-Entry task force, and the Board of Trustees for working as a unit to craft this plan.

Community Engagement

The Chilton ISD intends to ensure that all community stakeholders have the opportunity provide valuable insight regarding the continuity of services plan for Chilton ISD. Chilton ISD administration wished to engage a team of teachers, administrators, community members, parents, and students to review, evaluate, and implement a continuity of services plan that meets the academic, social, emotional, and physical needs of students while ensuring the safety of students and staff members. To date, with the help of the re-entry committee, the Chilton ISD has accomplished the following:

- Developed and distributed an on-line stakeholder engagement survey
<https://www.surveymonkey.com/r/LB3GD9H>
- Held a public interest meeting on Monday, May 24, 2021 at 6:00 p.m. regarding
 - Every Student Succeeds Act Expenditure Plans
 - ESSER III Continuity of Services and Expenditure Plans
- For additional information, this plan is available on the Chilton ISD website by following the link presented: <https://www.chiltonisd.org/browse/214195>

Core Learning and Academics

The Chilton ISD envisions a vibrant, interactive learning environment that promotes student growth and kindles a love for learning. Given the current pandemic, the Chilton ISD will offer the following learning opportunities for students during the 2021-2022 school year:

On-Site Learning: On-site learning for the 2021-2022 school year will offer the most equitable access to education for Chilton ISD students while considering the increased safety needs of students and staff members. Though students will receive on-campus instruction and academic supports, the Chilton ISD will follow the recommendations of the CDC, State Government Agencies, and the local community to design a learning environment that seeks to protect students. An exhaustive list of safety requirements can be found in the Safe Start section of this plan. A few of those adjustments will include:

- Alternative seating arrangements and temperature scans for students using school transportation
- Temperature scans for all students, staff members, and visitors to Chilton ISD facilities
- **Optional PPE** Requirements for students and staff members during the day (details will be presented in the Safe Start section of this plan)
- Continued virtual and live-stream broadcasts of Chilton ISD events
- Updated lunch procedures that will reduce the number of students in cafeteria at a given time to facilitate social distancing and/or serving breakfast and lunch meals in the classroom setting. This procedure will remain until the appropriate authorities discontinues the social distancing requirement.

This plan was developed to govern the Chilton ISD Continuity of Services. Thanks to Chilton ISD district and department leaders, the Community Re-Entry task force, and the Board of Trustees for working as a unit to craft this plan.

- Consistent, periodic sanitation of high frequency areas (restrooms, office areas, door handles, etc.). A detailed sanitation schedule can be found in the Safe Start section of the plan.

Attendance will be taken electronically by teachers and submitted to the campus and district attendance personnel for state accounting purposes. Students must attend 90% of courses to receive course credit.

Elementary Schedule:

Time Block	Pre-Kindergarten Activities (Self-Contained)
7:30 a.m. – 8:00 a.m.	Breakfast in Classrooms, Temperature Checks and Screening, Hand Sanitation
8:00 a.m. – 9:15 a.m.	Reading Instructional Block
9:15 a.m. – 10:00 a.m.	Elective (Art, PE, Library, Lab)
10:00 a.m. – 10:30 a.m.	Lunch in Cafeteria
10:30 a.m. – 11:00 a.m.	Recess (outdoors when possible)
11:00 a.m. – 12:00 p.m.	Writing, SS, Science
12:00 p.m. – 1:15 p.m.	Mathematics Instructional Block
1:15 p.m. – 2:00 p.m.	Story Time, Tiered Instructional Time
2:00 p.m. – 3:15 p.m.	Nap Time
3:15 p.m. – 3:30 p.m.	Snack Time (all snacks must be pre-packaged)
3:30 p.m. – 3:45 p.m.	Sanitation and Dismissal

Time Block	Kindergarten Activities (Self-Contained)
7:30 a.m. – 8:00 a.m.	Breakfast in Classrooms, Temperature Checks and Screening, Hand Sanitation
8:00 a.m. – 10:30 a.m.	Reading and Writing Instructional Block
10:35 a.m. – 11:05 a.m.	Lunch in Cafeteria
11:05 a.m. – 11:50 a.m.	Elective (Art, PE, Library, Lab)
11:50 a.m. – 1:20 p.m.	Math Instructional Block
1:20 p.m. – 1:40 p.m.	Recess (outdoors when possible)
1:40 p.m. – 2:40 p.m.	Tiered Instructional Block
2:40 p.m. – 3:30 p.m.	Science and SS
3:30 p.m. – 3:45 p.m.	Sanitation and Dismissal Procedures
Time Block	First Grade (Self-Contained)
7:30 a.m. – 8:00 a.m.	Breakfast in Classrooms, Temperature Checks and Screening, Hand Sanitation
8:00 a.m. – 10:30 a.m.	Reading and Writing Instructional Block
10:35 a.m. – 11:05 a.m.	Lunch in Cafeteria
11:05 a.m. – 11:50 a.m.	Elective (Art, PE, Library, Lab)
11:50 a.m. – 1:20 p.m.	Math Instructional Block
1:20 p.m. – 1:40 p.m.	Science and SS
1:40 p.m. – 2:40 p.m.	Tiered Instructional Block
2:40 p.m. – 3:00 p.m.	Science and SS
3:00 p.m. – 3:20 p.m.	Recess

This plan was developed to govern the Chilton ISD Continuity of Services. Thanks to Chilton ISD district and department leaders, the Community Re-Entry task force, and the Board of Trustees for working as a unit to craft this plan.

3:30 p.m. – 3:45 p.m.	Sanitation and Dismissal Procedures
-----------------------	-------------------------------------

Time Block	Second Grade (Self-Contained)
7:30 a.m. – 8:00 a.m.	Breakfast in Classrooms, Temperature Checks and Screening, Hand Sanitation
8:00 a.m. – 10:00 a.m.	Reading Instructional Block
10:00 a.m. – 10:45 a.m.	Elective (Art, PE, Library, Lab)
10:45 a.m. – 11:20 a.m.	Writing and Tiered Instruction
11:20 a.m. – 11:50 p.m.	Lunch in Cafeteria
11:50 p.m. – 12:30 p.m.	Writing and Tiered Instruction
12:30 p.m. – 2:00 p.m.	Math Instructional Block
2:00 p.m. – 3:00 p.m.	Science and SS
3:00 p.m. – 3:25 p.m.	Recess (outdoors when possible)
3:25 p.m. – 3:45 p.m.	Sanitation and Dismissal

Time Block	Third Grade
7:30 a.m. – 8:00 a.m.	Breakfast in Classrooms, Temperature Checks and Screening, Hand Sanitation
8:00 a.m. – 9:30 a.m.	Math or Reading Instructional Block 1
9:30 a.m. – 11:00 a.m.	Math or Reading Instructional Block 2
11:00 a.m. – 11:30 a.m.	Tiered Instruction
11:30 a.m. – 12:15 p.m.	Lunch in Classroom
12:00 p.m. – 1:15 p.m.	Science or SS Instructional Block 1
1:15 p.m. – 2:00 p.m.	Elective (Art, PE, Library, Lab)
2:00 p.m. – 3:00 p.m.	Science or SS Instructional Block 2
3:00 p.m. – 3:30 p.m.	Tiered Instruction or Homeroom
3:30 p.m. – 3:45 p.m.	Sanitation and Dismissal

Time Block	Fourth and Fifth Grades
7:30 a.m. – 8:00 a.m.	Breakfast in Classrooms, Temperature Checks and Screening, Hand Sanitation
8:00 a.m. – 9:00 a.m.	Instructional Block 1
9:00 a.m. – 10:00 a.m.	Instructional Block 2
10:00 a.m. – 10:45 a.m.	Tiered Instruction
10:45 a.m. – 11:30 a.m.	Lunch in Classroom
11:45 a.m. – 12:30 p.m.	Tiered Intervention
12:30 p.m. – 1:30 p.m.	Instructional Block 3
1:30 p.m. – 2:30 p.m.	Instructional Block 4
2:30 p.m. – 3:15 p.m.	Elective (Art, PE, Library, Lab)
3:15 p.m. – 3:35 p.m.	Homeroom

This plan was developed to govern the Chilton ISD Continuity of Services. Thanks to Chilton ISD district and department leaders, the Community Re-Entry task force, and the Board of Trustees for working as a unit to craft this plan.

3:35 p.m. – 3:45 p.m.	Sanitation and Dismissal Procedures
-----------------------	-------------------------------------

Secondary Schedule: Monday - Thursday

Period	Time (Monday – Thursday)
First Bell	7:40 a.m.
First Period	7:45 – 8:35
Advisory	8:38 – 9:08
Second Period	9:11 – 10:01
Third Period	10:04 – 10:54
Fourth Period	10:57 – 11:47
HS Lunch	11:50 – 12:40
HS Class	12:23 – 1:13
JH Class	11:50 – 12:40
JH Lunch	12:43 – 1:13
Sixth Period	1:16 – 2:06
Seventh Period	2:09 – 2:59
Eighth Period	3:02 – 3:47

Secondary Schedule: Friday (Regular)

Period	Friday
First Bell	7:40 a.m.
First Period	7:45 – 8:37
Second Period	8:40 – 9:27
Third Period	9:30 – 10:17
Fourth Period	10:20 – 11:07
Fifth Period	11:10 – 11:57
HS Lunch	11:57 – 12:27
HS Class	12:30 – 1:17
JH Class	12:00 – 12:47
JH Lunch	12:47 – 1:17
Seventh Period	1:20 – 2:07
Eighth Period	2:10 – 2:57

Secondary Schedule: Friday (Assembly)

Period	Friday
First Bell	7:40 a.m.
First Period	7:45 – 8:37
Second Period	8:40 – 9:27

This plan was developed to govern the Chilton ISD Continuity of Services. Thanks to Chilton ISD district and department leaders, the Community Re-Entry task force, and the Board of Trustees for working as a unit to craft this plan.

Third Period	9:30 – 10:17
Fourth Period	10:20 – 11:07
Fifth Period	11:10 – 11:57
HS Lunch	11:57 – 12:27
HS Class	12:30 – 1:17
JH Class	12:00 – 12:47
JH Lunch	12:47 – 1:17
Seventh Period	1:20 – 1:50
Eighth Period	1:53 – 2:27
Assembly	2:30 – 2:57

Remote Asynchronous Model:

The remote asynchronous model for instruction will end on Friday, May 28, 2021 at 4:00 p.m. The 2021-2022 school year will offer only in-person instruction for all Chilton ISD students.

Registration

Registration for the 2021-2022 academic year began on Wednesday, May 5, 2021. Registration for all returning students in grades 1st – 12th will be completed online via parent portal. Additionally, returning students should have received documents in the mail to return to their campus. For parents without access to internet or computer, a registration station has been set up in the PEIMS Coordinator’s office at 905 Durango Ave from 9:00 a.m. to 4:00 p.m.

Students in pre-kindergarten and kindergarten will use the traditional registration method. Traditional documents are available in the elementary office. All new students to Chilton ISD will need to visit the PEIMS Coordinator for registration information. New students will need to present the following documents: birth certification, social security card, immunization records, proof of residency, and records from the previous school.

For assistance completing the online registration process, please contact Mrs. LaTrice Canada, PEIMS Coordinator, at 254-546-1228 or lcanda@chiltonisd.org.

Technology Accessibility

The Chilton ISD understands the complexity of accessing adequate WiFi in rural territories. Therefore, we are working toward the capability of providing access via hotspot to Chilton ISD students to use with Chilton issued chromebook devices. The cost for this service will be \$400.00 annually and will allow the student unlimited access to complete homework assignments using their chromebook device. Please note that the hotspot will be specifically programmed to Chilton ISD chromebook devices. For additional information, please contact the administration offices.

This plan was developed to govern the Chilton ISD Continuity of Services. Thanks to Chilton ISD district and department leaders, the Community Re-Entry task force, and the Board of Trustees for working as a unit to craft this plan.

Safe Re-Entry Measures

Staff Entry

All Chilton ISD Staff Members will be required to check-in daily. Check-in stations will be located in the Elementary School (for Elementary Staff), the Secondary Campus (for Secondary Staff), and in the district cafeteria (for child nutrition). Entry procedures will be as outlined below:

1. Principals and Department supervisors will assign personnel to manage the check-in stations.
2. Once a staff member arrives, he or she will step in front of the temperature scan station for a temperature reading. If the signal indicates green, then the staff member will be given his or her district ID and allowed to proceed into the building. If the reading displays red, indicating an elevated temperature, then the staff member will have a second scan using a hand-held digital device. If this secondary scan also shows an elevated temperature, then the staff member will be required to exit the building and seek medical attention.
3. Each staff member will complete daily attestation using the time clock system.
4. All staff members must sanitize hands immediately following entry.
5. Face coverings will be optional upon entry into the building. It is recommended that staff members wear face shield coverings to allow for students to see the teachers face and articulation of phrases.
6. Before leaving each day, staff members will be required to leave ID badges at the check-in station. These badges will be disinfected using spray disinfectant or electronic disinfection (similar to how safety goggles are disinfected in the science laboratory).

Student Entry

All Chilton ISD students will be screened for temperature daily. There will be two stations at the elementary campus, two stations at the secondary campus, and one station at the cafeteria. Entry procedures will be as outlined below:

1. Once students arrive on campus at 7:30 a.m., students will be directed to the appropriate campus. Elementary students who walk to campus or whose parents drop them to campus should check-in at the backside of the elementary campus (Drop-off line). Those elementary students riding the bus, should proceed to the main entry of the cafeteria for check-in. Students in grades 6 – 8 should proceed to the cafeteria for breakfast. High School students should proceed to the cafeteria for breakfast. Students arriving after 7:40 a.m. should report, immediately, to their first period class. Any student exhibiting an elevated temperature from the scan station and the hand-held device will be isolated for parent pick-up.
2. Secondary students will be eat breakfast in the cafeteria from 7:30 a.m. to 7:40 p.m. All elementary breakfast meals will be served between 7:30 a.m. and 8:00 a.m. in the classrooms.

This plan was developed to govern the Chilton ISD Continuity of Services. Thanks to Chilton ISD district and department leaders, the Community Re-Entry task force, and the Board of Trustees for working as a unit to craft this plan.

Visitor Entry

During the 2021-2022 academic year, outside visitation will be kept to a minimum. All visitors choosing to enter the Chilton ISD will be required to adhere to the following procedures:

1. Face coverings, though recommended, will be optional for all visitors to Chilton ISD.
2. Submit to temperature scan using the temperature scan station. If the scan display is green (indicating a sufficient temperature reading), the visitor will be directed to the appropriate office for further assistance. If the temperature scan display is red (indicating an elevated temperature), the visitor will be re-scanned using a hand-held digital thermometer. A second elevated display will result in the visitor being refused entry into the facility.

Student Transportation Guidelines

During the 2021-2022 academic year, the Chilton ISD Transportation Department has enacted additional safety protocols to ensure the safety of students and staff members.

1. Student temperatures will be taken upon entry to school bus.
2. Though not required, students have the option of wearing a face mask while in transit to school.
3. Every effort will be made to ensure social distancing while in transit including seating arrangements that allow for minimized contact, pairing of seating partners to ensure those students in the same home sit together, and other appropriate measures.
4. For extra-curricular travel, the same seating arrangements will apply. Additionally, extra-curricular participants and sponsors will be encouraged to wear face coverings during travel.

Child Nutrition Guidelines

In conjunction with the Child Nutrition Director, the Chilton ISD has developed a plan to allow most students to continue use of the district cafeteria for feeding. While seated in the cafeteria, the following guidelines will be followed:

- Students will be seated according to state and federal distancing guidelines.
- District maintenance personnel will sanitize after each use. The sanitizer used has a three-minute kill time. Therefore, there is a minimum of ten minutes between use of the district cafeteria.
- District and Child Nutrition administration will work to ensure that seating patterns are consistent and arranged to ensure social distancing.
- All breakfast meals, for elementary students, will be served in the classroom until further notice.
- Secondary students will eat breakfast in the cafeteria from 7:30 a.m. to 7:40 a.m.

Sanitation

This plan was developed to govern the Chilton ISD Continuity of Services. Thanks to Chilton ISD district and department leaders, the Community Re-Entry task force, and the Board of Trustees for working as a unit to craft this plan.

The Chilton ISD has increased maintenance personnel and the operations budget to ensure adequate supplies of sanitation equipment. In addition to the purchase of three electrostatic sanitation machines, the Chilton ISD will supply every classroom with basic sanitation supplies (disinfectant, microfiber towels, gloves, and hand sanitizer). Prior to the beginning of the school year, the Director of Maintenance and Operations will publish a detailed schedule for the sanitation of all commonly used and high traffic areas throughout the day. The intent is to ensure that all areas are cleaned and sprayed before and after major transitions.

Elementary Sanitation Schedule for Common Areas

8:00-8:15	Hallway Restrooms
9:00-9:15	Hallway Restrooms
9:55-10:05	Gym and Library
10:05-10:20	Hallway Restrooms
10:45-11:00	Gym and Library
11:00-11:15	Hallway Restrooms
11:45-12:00	Gym, Library, and Computer Lab
12:00-12:15	Hallway Restrooms
1:00-1:15	Hallway Restrooms
2:00-2:15	Gym and Library
3:00-3:15	Hallway Restrooms
3:30-3:45	Gym, Library, and Computer Lab

Secondary Schedule for Common Areas

Monday – Thursday

- 7:55 Main Hallways/Bathrooms
- 8:30 Lounge/Copiers/Teacher Bathrooms/Office
- 9:30 Main Hallways/Bathrooms
- 10:05 Main Hallways/Bathrooms
- 10:30 Lounge/Copiers/Teacher Bathroom/Office
- 11:15 Main Hallways/Bathrooms
- 11:50 Main Hallways/Bathrooms
- 12:15 Lounge/Copiers/Teacher Bathrooms/Office

This plan was developed to govern the Chilton ISD Continuity of Services. Thanks to Chilton ISD district and department leaders, the Community Re-Entry task force, and the Board of Trustees for working as a unit to craft this plan.

12:30 Cafeteria
1:15 Cafeteria
2:00 Cafeteria
2:30 Main Hallways/Bathrooms
3:50 School out end of day cleaning

Friday

7:55 Main Hallways/Bathrooms
8:40 Main Hallways/Bathrooms
9:30 Main Hallways/Bathrooms
10:20 Main Hallways/Bathrooms
11:10 Main Hallways/Bathrooms
12:30 Cafeteria/ Rooms 2,5,16/ Library
1:20 Cafeteria/ Rooms 19,11
2:10 Main Hallways/Bathrooms
3:00 School out; End of Day Cleaning

The most significant investment will come with the use of the Alen Air Purification system and the Ecoloxtech Hypochlorous Acid Fogging System. The system consistently purifies classroom air through a filtration process that includes UV eradication and HEPA filtration. In addition, the fogger system uses non-toxic Hypochlorous Acid solution to periodically fog classroom spaces. Hypochlorous is an electrolyzed saltwater solution that has proven more effective than traditional bleach with no toxicity.

This plan was developed to govern the Chilton ISD Continuity of Services. Thanks to Chilton ISD district and department leaders, the Community Re-Entry task force, and the Board of Trustees for working as a unit to craft this plan.

Chilton ISD COVID-19 Safety Response Levels

Level 1: Prevention

Actively Monitoring Chilton ISD Community

- More frequently clean common areas including door hardware, seats, etc.
- Communicate online and to districts the precautions to avoid COVID-19
- Continue to monitor conditions and communicate with local and state partners
- Communicate to districts to keep sick participants home
- Communicate to staff to stay home if sick
- Begin weekly administrative team briefings for communication updates
- Limited visitor access

Level 2: Mitigation

Community Spread Cases in Chilton ISD Community; One or more cases at campus/facility

- Continue to monitor conditions and communicate with local and state partners
- Ramp up cleaning efforts to expand cleaning less frequently used areas in addition to common areas
- Potentially limit all unnecessary travel
- Potentially limit workshops and meetings at the Chilton ISD
- Potentially limit/restrict outside visitors and guests
- Potentially restrict outside food deliveries to facilities
- Communicate to staff to stay home if sick
- Develop contingency plans for staffing and operations
- Limit use of facilities for outside activities and rental
- Persons who came in close contact (within 6 feet for 15 minutes or more without PPE) will be advised to self-quarantine and self-monitor symptoms
- Short-term closure (3 days) of campus/facility may be necessary

Level 3: Modified Operations

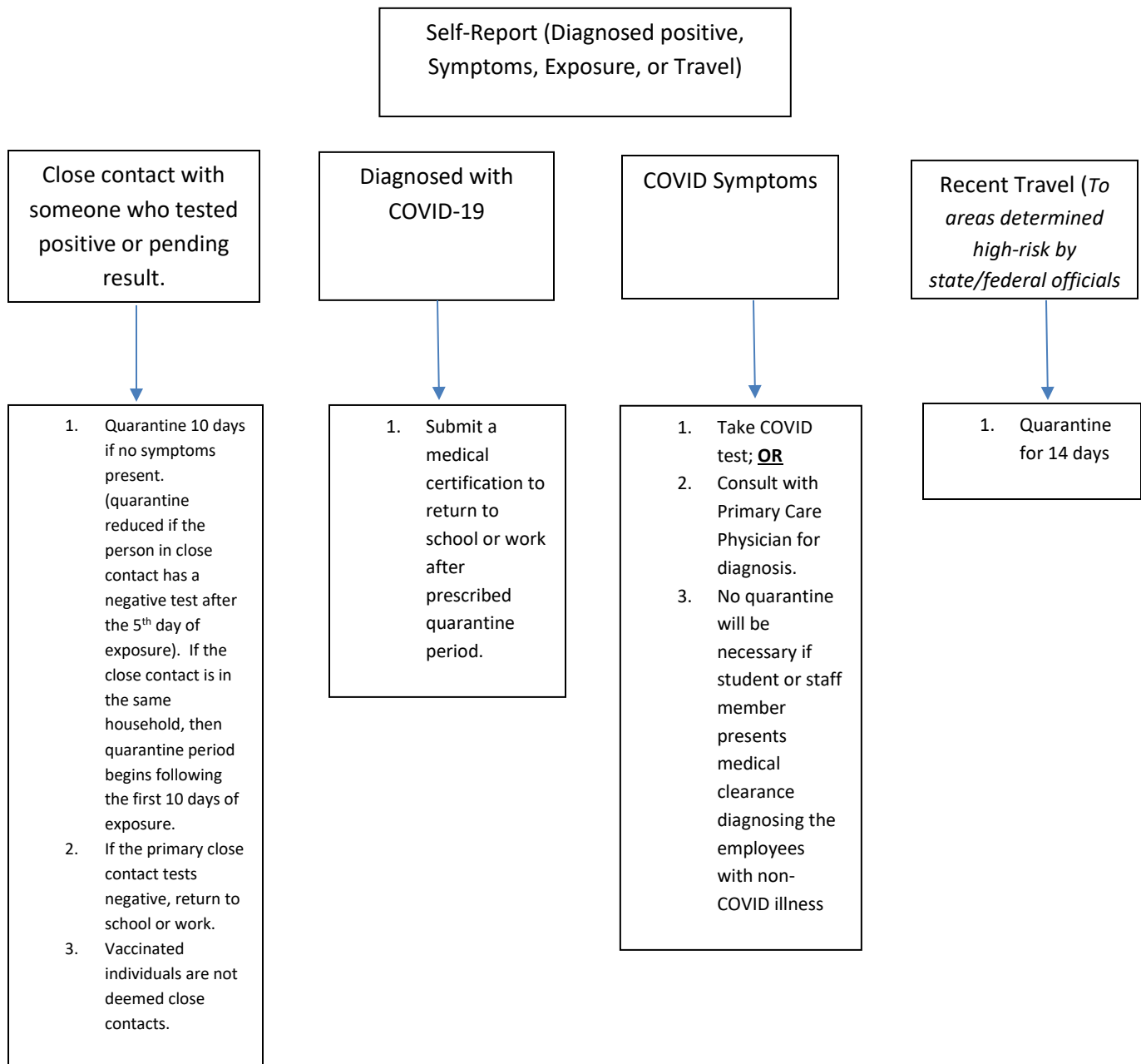
COVID-19 cases exceed 5% of the in-person district population or staff members are unable to operate effectively with in-person learning

- Potentially cancel classes and building access
- Eliminate use of district facilities by all outside vendors and rentals
- Communicate to state and local officials the extent and length of closures
- Communicate which staff members should be available for duty to maintain services
- Perform deep clean of all areas with consultation from commercial vendors

This plan was developed to govern the Chilton ISD Continuity of Services. Thanks to Chilton ISD district and department leaders, the Community Re-Entry task force, and the Board of Trustees for working as a unit to craft this plan.

Chilton ISD Return to Work Flowchart

Though we hope that proactive screening measures, increased sanitation, and personal protective equipment policies will ensure the safety of all Chilton ISD students and staff members, we want to have a definitive plan of action should the unfortunate scenario arise and one of our Chilton ISD students or staff presents with symptoms or tests positive. *This flow chart will be the plan of action beginning August 23, 2021.*



This plan was developed to govern the Chilton ISD Continuity of Services. Thanks to Chilton ISD district and department leaders, the Community Re-Entry task force, and the Board of Trustees for working as a unit to craft this plan.