

Plan for Return to In-Person Instruction

Original Board Approval Date: November 18, 2020 (Red Tier)

1st Submittal: 01/29/2021 (deadline February 1, 2021) (Purple Tier)

2nd Submittal: 02/15/2021 Rev. 1 (Purple Tier)

3rd Submittal: 03/19/2021 Rev. 2 (Red Tier)

4th Submittal 03/26/2021 Rev. 3 (Orange Tier)

Rev. 4 05/05/2021 posted

Rev. 5 08/11/2021 (updated public health guidance)

This plan is based upon the guidance of the California Department of Public Health (CDPH), San Mateo County Health (SMCH), Centers for Disease Control and Prevention (CDC), and Cal/OSHA as presented in the [Pandemic Recovery Framework](#).

Table of Contents

Table of Contents	2
Vaccination	3
Masks	3
Physical Distancing	4
Gatherings	4
Ventilation	5
Stay Home When Sick and Get Tested	5
When Students or Staff Are Sick at School	6
Hand Hygiene	7
Cleaning and Disinfection	7
Food and Meals	7
Cohorting	8
Training	8
Visitors	8
Extracurricular and Athletic Activities	9
Travel	9
Screening Testing	10
Response Testing and Quarantine	12
Testing and Quarantine of Vaccinated Close Contacts	12
Testing of Those Who Previously Had COVID-19	12
Testing and Quarantine of Unvaccinated Close Contacts	13
When Both Parties Were Wearing a Mask	13
When One Party Was Not Wearing a Mask	13
Additional Requirements Concerning Employees Who Are Not Vaccinated	14
Tests to Assess Status during Quarantine or to Exit Quarantine	14
Case Reporting and Contact Tracing	16
Outbreaks	16

San Bruno Park School District (SBPSD) prioritizes the safety of its students and staff. This plan lays out SBPSD COVID-19 safety plan for the 2021-22 school year and reflects CDPH, CDC, and Cal/OSHA guidance. Given the continuing evolving situation with COVID-19, we can expect public health guidance will be updated throughout the school year. SBPSD will update its practices to align with this guidance while protecting the health and safety of our students and staff.

Vaccination

Vaccination is an important strategy to protect both students, staff, and community members. The State Public Health Officer issued an [Order](#) on August 11, 2021, requiring all school personnel to show [proof of vaccination](#) or to test and show proof of a weekly negative COVID-19 test. In compliance with this requirement, SBPSD is asking all staff to share proof of vaccination by August 23, 2021 or results from their recent COVID 19 test. Those unvaccinated will be required to submit a COVID test EVERY Monday before reporting to their site. COVID-19 test results should be sent to HR.

Per CDPH guidance, SBPSD will seek documentation of the vaccination status of all staff and students. Verification of vaccination status is an important tool for use in determining the need for testing, contact tracing, quarantine, and isolation.

Vaccination status will be documented with proof of vaccination or with a completed and signed [self-certification of COVID-19 vaccination status](#).

SBPSD will use the same protocols that are used to collect and secure other immunization or health status information from students. These protocols comply with relevant statutory and regulatory requirements, including Family Educational Rights and Privacy Act (FERPA) statutory and regulatory requirements.

If a student or staff member is unable or unwilling to share their vaccination status, they will be treated as **not vaccinated** for all purposes of this plan.

Masks

Per the San Mateo County Health Officer's [order](#), SBPSD will require universal masking on all school campuses. The following summarizes SBPSD masking policies:

- All students are required to mask indoors except those who are exempt based on [CDPH face mask guidance](#). Exemptions include:
 - Persons younger than two years old.
 - Persons with a medical condition, mental health condition, or disability that prevents wearing a mask. This includes persons with a medical condition for whom wearing a mask could obstruct breathing or who are unconscious, incapacitated, or otherwise unable to remove a mask without assistance.

- Persons who are hearing impaired, or when communicating with a person who is hearing impaired, the ability to see the mouth is essential for communication.
- Persons for whom wearing a mask would create a risk to the person related to their work, as determined by local, state, or federal regulators or workplace safety guidelines.
- All adults are required to wear a mask per the San Mateo County Health Officer's [order](#).
- Staff and other adults exempted from wearing a mask due to a medical condition, must wear a non-restrictive alternative, such as a face shield with a drape on the bottom edge, as long as their condition permits it.
- SBPSD schools will provide a mask to students who fail to bring one.
- SBPSD schools will work with students who are not exempt from masking requirements to help them meet the requirement. If needed, Principals will consult with parents for assistance. If a student is not exempt and continues to refuse to wear a mask, SBPSD will offer alternative educational opportunities for those students.
- If a mask cannot be used for pedagogical or developmental reasons, (e.g., communicating or assisting young children or those with special needs) a face shield with a drape ([per CDPH guidelines](#)) can be used instead of a mask while in the classroom as long as the wearer maintains physical distance from others. Staff must return to wearing a mask outside of the classroom.
- SBPSD will require masks to be worn outdoors.
- All passengers and drivers must wear a mask on school buses and other forms of student transportation except when exempt from [CDPH face mask guidance](#).
- SBPSD will provide masks to those students on school buses who may need them.
- Even when not required, staff may elect to wear a mask.

Physical Distancing

The CDPH does not include any recommendations concerning physical distancing in schools and reports that, "Recent evidence indicates that in-person instruction can occur safely without minimum physical distancing requirements when other mitigation strategies (e.g., masking) are implemented."

SBPSD schools will maximize physical distance as much as possible when students and staff are eating indoors. SBPSD Schools will also arrange for students and staff to eat outdoors as much as feasible.

If students are unable to wear masks, SBPSD Schools will promote physical distancing as an alternative safety measure when feasible.

Gatherings

Although CDPH does not address gatherings in its guidance, SBPSD will consider all of the following when organizing meetings and events: limit the size of indoor gatherings, increase distance among participants, and/or adjust masking requirements. Even if events are outdoors and participants are vaccinated, SBPSD will consider these adjustments when planning meetings and events.

Ventilation

Quality HVAC system design, operation, and maintenance are critical for providing clean and healthy Indoor Air Quality (IAQ) in schools. In addition to improving occupant health and performance, regular HVAC maintenance saves energy.

- SBPSD will monitor ventilation systems.
- Outdoor windows and doors will be open as weather allows.
- Classrooms are equipped with in-room (portable) air purifiers to improve indoor air quality.
- Bus drivers will open or crack windows, if doing so does not pose a safety risk.
- When experiencing unhealthy air quality typically associated with wildfires, the school sites will implement the [Big Five](#) Shelter in Place Protocol, which includes:
 - Keeping doors and windows shut.
 - Holding outdoor classes and meals inside.
 - Setting the central system's circulating fan to operate continuously.
 - Using portable air cleaners in rooms.
- Site/District administrators will monitor [air quality](#).
- If needed, SBPSD will consider dismissing students and moving to an alternative instructional model until air quality improves and proper ventilation on indoor classrooms/common areas can resume.

Stay Home When Sick and Get Tested

SBPSD will continue to use Facilitron as the daily screener for all students and staff, before entering campuses. The focus is on reminding staff and families that those who are not feeling well should stay home. The CDPH notes that getting tested for COVID-19 when symptoms are consistent with

COVID-19 will help with rapid contact tracing and prevent possible spread at schools. CDPH recommends that staff members and students with symptoms of COVID-19 infection not return for in-person instruction until they have met these criteria:

- At least 24 hours have passed since resolution of fever without the use of fever-reducing medications; **and**
- Other symptoms have improved; **and**
- They have a negative COVID-19 test, **OR** a healthcare provider has provided documentation that the symptoms are typical of their underlying chronic condition (e.g., allergies or asthma) **OR** a healthcare provider has confirmed an alternative named diagnosis (e.g., Streptococcal pharyngitis, Coxsackie virus), **OR** at least 10 days have passed since symptom onset.

Students, teachers, and staff who have symptoms of infectious illness, such as influenza (flu) or COVID-19, should stay home and be referred to their healthcare provider for testing and care.

Staff should contact their immediate supervisor, if they are experiencing any common symptoms of COVID-19 or are not feeling well. Parents and guardians should contact the school office if their student is not feeling well and please keep your child at home.

SBPSD staff will remind parents and guardians to keep children home if they are showing signs and symptoms of COVID-19 and get them tested.

Common Symptoms of COVID-19 (CDPH)

- | | |
|---|------------------------------|
| ■ Headache | ■ New loss of taste or smell |
| ■ Fever or chills | ■ Sore throat |
| ■ Cough | ■ Congestion or runny nose |
| ■ Shortness of breath or difficulty breathing | ■ Nausea or vomiting |
| ■ Fatigue (tiredness) | ■ Diarrhea |
| ■ Muscle or body aches | |

When Students or Staff Are Sick at School

When a student or staff member is sick while on campus, SBPSD staff must escort the person to the school's isolation room and provide a COVID-19 test.

If the student or staff member tests positive for COVID-19, they will be directed to contact their healthcare provider for follow up response and monitoring. Parents/guardians must be available to pick up their child immediately.

If the student or staff member tests negative for COVID-19, they may return to school following the school's health policies, which is usually 24 hours after a fever subsides without the use of medication and symptoms have improved.

SBPSD staff will refer to this [CDC chart](#) for a step-by-step approach to responding when a student or staff member is sick while on campus.

Hand Hygiene

The health of the entire SBPSD community depends on all of us doing our parts. We will maintain these rigorous hand hygiene practices to ensure the safe opening of school:

- Staff will provide students with training on proper handwashing technique.
- Students will wash hands and use hand sanitizer throughout the day, including during bathroom breaks, lunch time, and before and after PE.
- Staff will provide students with time in the classroom for handwashing or the use of hand sanitizer.
- Hand sanitizer and hand sanitizer stations are available on all school sites.
- SBPSD will also ensure adequate supplies to support healthy hygiene behaviors, including soap, tissues, open trash cans, masks, and hand sanitizers with at least 60 percent ethyl alcohol for staff and children who can safely use hand sanitizer.
- Hand sanitizers will be stored up, away, and out of sight of young children and should be used only with adult supervision for children under 6 years of age.

Cleaning and Disinfection

- SBPSD has cleaning and disinfection protocols and will continue to implement them as they would before the pandemic.
- Per CDPH COVID-19 guidance, cleaning once a day is usually enough to sufficiently remove potential viruses that may be on surfaces.
- If a facility has had a sick person with COVID-19 within the last 24 hours, clean AND disinfect the spaces occupied by that person during that time.
- Please see the [SBPSD Custodial Covid Operating Procedures](#)

Food and Meals

- SBPSD will maximize physical distance as much as possible when students and staff are eating indoors. SBPSD will also arrange for students and staff to eat outdoors as much as feasible.
- Each school site has staggered lunches to reduce the number of students eating at one time.
- Custodial staff will clean frequently touched surfaces. Surfaces that come in contact with food should be washed, rinsed, and sanitized before and after meals.
- Given the very low risk of transmission from surfaces and shared objects, there is no need to limit food service approaches to single use items and packaged meals. However, SBPSD will begin the school year with single use and packaged meals and may adjust it when appropriate.

Training

SBPSD staff will participate in a safety protocol meeting with SBPSD site principals to review and discuss this plan.

A copy of this plan will be shared with families, and school staff will review the school's safety protocols and expectations for families.

Both staff and families will have the opportunity to ask questions and get a clear understanding of the plan.

Visitors

SBPSD has adopted the CDPH's recommendations for visitors to campus: SBPSD will limit nonessential visitors, volunteers, and activities involving external groups or organizations with people who are not fully vaccinated, particularly when there is moderate-to-high COVID-19 community transmission.

- All visitors will be required to complete the symptom screening before entering campus.
- SBPSD will not limit access for direct service providers but can ensure compliance with school visitor policies.
- Anyone, including visitors, who have symptoms of infectious illness, such as flu or COVID-19, should stay home and seek testing and care.
- All visitors are required to wear masks while on campus unless exempt.
- SBPSD will implement measures to communicate to non-employees the mask requirements on their premises.
- All SBPSD sites may request that visitors provide proof of vaccination status before entering campus. If visitors are not vaccinated or refuse or are unable to provide this information, they must follow all school policies related to not vaccinated individuals.

Extracurricular and Athletic Activities

- SBPSD will require vaccination for participation in extracurricular activities, sports, etc. for those students who are eligible for the vaccine.
- Students who are not vaccinated may not participate in extracurricular and athletic activities after an exposure to COVID-19.
- Students who are vaccinated and have been exposed do not require quarantine unless symptomatic.
- Students who are not vaccinated and have been exposed must quarantine for 10 full days for all extracurricular activities (e.g., at school, within the community settings) and are asymptomatic..
- All students who participate in indoor sports and other higher-risk activities must continue to wear masks and should maintain physical distance as much as possible.

Travel

Please see the table below for CDC recommendations and requirements concerning travel. All district staff must contact HR for travel expectations and requirements.

Domestic Travel	Not Vaccinated	Fully Vaccinated
Get tested 1-3 days before travel	✓	
Get tested 3-5 days after travel and self-quarantine for 7 days. Self-quarantine for 10 days if you don't get tested.	✓	
Self-monitor for symptoms	✓	✓
Wear a mask and take other precautions during travel	✓	✓
International Travel	Not Vaccinated	Fully Vaccinated
Get tested 1-3 days before traveling out of the US	✓	
Mandatory test required before flying to US	✓	✓
Get tested 3-5 days after travel	✓	✓
Self-quarantine after travel for 7 days with a negative test or 10 days without test	✓	
Self-monitor for symptoms	✓	✓
Wear a mask and take other precautions during travel	✓	✓

Screening, Pooled Testing and Quarantine

Definitions

Fully vaccinated: two weeks have passed since individual received their final dose of COVID-19 vaccine.

Close Contact: anyone who was within 0-6 feet indoors of a Case for more than 15 minutes over a 24-hour period.

SBPSD will require all staff and students to complete the daily COVID-19 symptom screening BEFORE coming to campus.

SBPSD has partnered with the California Department of Health the Testing Task Force to implement Pooled Testing. Pooled testing offers regular COVID monitoring and targeted intervention when needed, per CDC guidance.

Testing and Quarantine of Vaccinated Close Contacts

SBPSD will follow the CDPH's guidance for schools on response testing and quarantine, which include the following:

- Fully vaccinated people should get tested if experiencing **COVID-19 symptoms**.
- If fully vaccinated people test positive for COVID-19, they should follow CDPH and local health department guidance regarding isolation and/or exclusion from high risk settings.
- Fully vaccinated students, teachers, and staff with no COVID-19 symptoms do not need to be tested following an exposure to someone with COVID-19.
- Following a known exposure at work, fully vaccinated workers do not need to quarantine if asymptomatic.
- Per Cal/OSHA, fully vaccinated employees do not need to be offered testing or excluded from work after close contact unless they have COVID-19 symptoms.
- The CDC now recommends that fully vaccinated people who have a known exposure to someone with suspected or confirmed COVID-19 to be tested 3-5 days after exposure, and to wear a mask in public indoor settings for 14 days or until they receive a negative test result.

Testing of Those Who Previously Had COVID-19

People who have tested positive for COVID-19 within the past three months and recovered do not need to get tested following an exposure as long as they do not develop new symptoms.

Testing and Quarantine of Unvaccinated Close Contacts

When Both Parties Were Wearing a Mask

When both parties were wearing a mask in an indoor or outdoor school setting or school bus, **students** who are unvaccinated and are close contacts may undergo a modified 10-day quarantine and continue to attend school for in-person instruction if they:

- Are asymptomatic;
- Continue to appropriately mask, as required;
- Undergo at least twice weekly testing during the 10-day quarantine; and
- Continue to quarantine for all extracurricular activities at school, including sports, and activities within the community setting.

CDPH provides the following testing guidance for students in modified quarantine.

- Testing should begin immediately after being exposed to someone with COVID-19. Subsequent testing should occur at least 3 days apart.
- Quarantine can end after Day 7 if a diagnostic specimen is collected after Day 5 from the date of last exposure and tests negative.

According to CDPH, students in modified quarantine:

- Are strongly encouraged to wear masks when outdoors .
- May use school buses, including buses operated by public and private school systems.
- May participate in all required instructional components of the school day, except activities where a mask cannot be worn, such as while playing certain musical instruments.
- May eat meals on campus using food service recommendations provided in this plan.

Please note: modified quarantine does not apply to teachers or other adults.

When One Party Was Not Wearing a Mask

When one party was not wearing a mask, those who remain asymptomatic may discontinue self-quarantine under the following conditions:

- Quarantine can end after Day 10 from the date of last exposure without testing; OR

- Quarantine can end after Day 7 if a diagnostic specimen is collected after Day 5 from the date of last exposure and tests negative.
- To discontinue quarantine before 14 days following last known exposure, asymptomatic close contacts must:
 - Continue daily self-monitoring for symptoms through Day 14 from last known exposure; AND
 - Follow all recommended non-pharmaceutical interventions (e.g., wearing a mask when around others, hand washing, avoiding crowds) through Day 14 from last known exposure.

If any symptoms develop during this 14-day period, the exposed person must immediately isolate, get tested, and contact their healthcare provider with any questions regarding their care.

Additional Requirements Concerning Employees Who Are Not Vaccinated

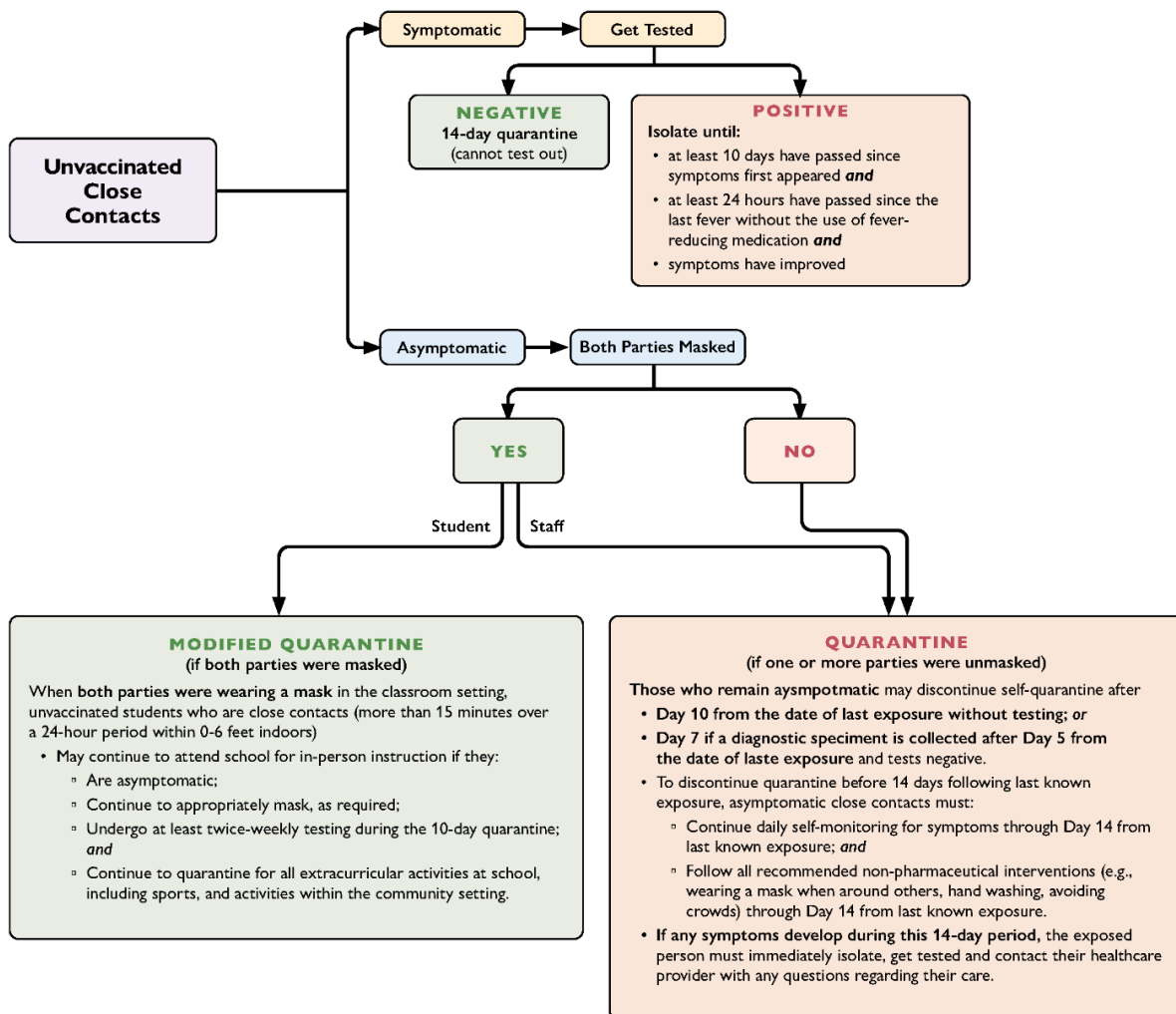
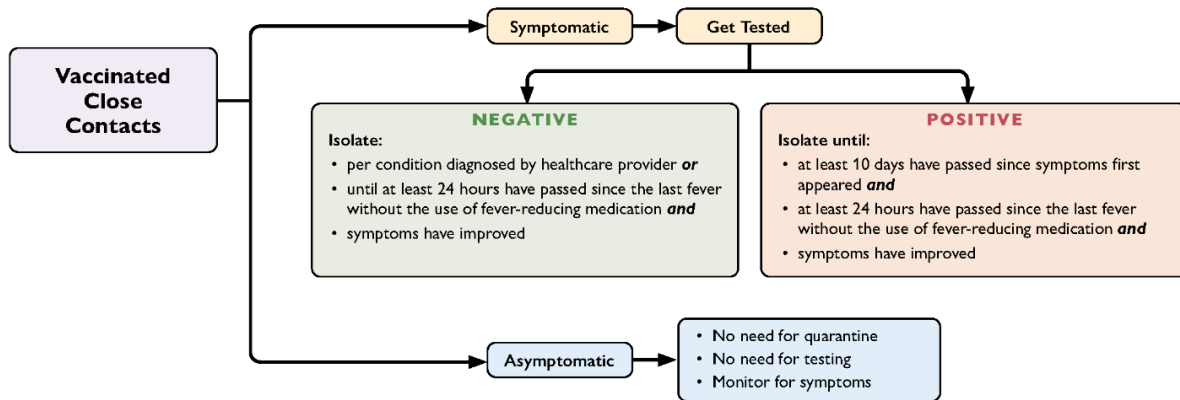
Per Cal/OSHA, SBPSD must:

- Exclude employees who have COVID-19 symptoms and/or are not fully vaccinated and have had a close contact from the workplace and, if that close contact is work related, ensure continued wages.
- Offer COVID-19 testing at no cost during paid time to their employees who are not fully vaccinated and had potential exposure to COVID-19 in the workplace, and provide them with information on benefits.

Tests to Assess Status during Quarantine or to Exit Quarantine

- Any FDA-approved diagnostic test is acceptable for evaluation of an individual's COVID-19 status. This includes antigen diagnostic tests and PCR diagnostic tests. PCR tests are preferred, but not required. See the CDPH school testing resources for more information.
- Collection of diagnostic specimens for asymptomatic persons during quarantine may occur in schools, healthcare settings, or other locations supervised by school or healthcare personnel. Specimens may be processed at the point-of-care (POC) or in a laboratory.
- At this time, at-home testing is not recommended for evaluation of an individual's status during quarantine.
- For persons in quarantine who experience symptoms, a negative result from an antigen test or POC molecular test results should be confirmed with a laboratory-based PCR test.

COVID-19 Exposure at School



Case Reporting and Contact Tracing

The COVID-19 Point Person for SBPSD is Stacy Russell, Coordinator of COVID-19 Response, and Mariana Solomon, Associate Superintendent Business Services will serve as the designated alternate. The designated point person for school sites is the principal. All school staff and families will be informed of the designated staff person and how to contact them.

SBPSD staff will follow this protocol where there is one or more confirmed cases of COVID-19 in the school community:

- The SBPSD COVID-19 Point Person must report all COVID-19 cases and clusters of undiagnosed respiratory illness to SMC CD Control as soon as practicable (within 24 hours) at COVID19_SchoolTeam@smcgov.org.
- The School COVID-19 Point Person will immediately notify SBPSD Point Person of COVID-19 cases in the school community.
- The SBPSD COVID-19 Point Person and the assigned San Mateo County Health investigator will be in daily contact Monday – Friday, unless instructed otherwise by SMC CD Control.
- The SBPSD COVID-19 Point Person will collect data from all schools and must complete a report for all new cases and submit it via secure email.
- The SBPSD COVID-19 Point Person will notify the Superintendent.
- The School COVID-19 Point Person will notify the school community using template letters provided in the Pandemic Recovery Framework, with the guidance of the SBPSD Point Person..

SBPSD will comply with the notice obligations, ensuring that staff and families will receive prompt notifications of exposures and closures, while also maintaining **confidentiality**.

School staff will receive training regarding COVID-19 reporting protocols in the event they receive a positive test result.

SBPSD will maintain accurate records and track all COVID-19 cases, while ensuring medical information remains confidential. These records must be made available to employees, authorized employee representatives, or as otherwise required by law, with personal identifying information removed.

Per Cal/OSHA guidance, SBPSD will provide written notice within one day of learning of a case to people at the school site who may have been exposed to COVID-19.

Outbreaks

In the case of an outbreak, SBPSD will follow these protocols:

- Provide written notice of a school site outbreak (three or more cases in an exposed workgroup in a 14-day period) and major outbreaks (20 or more cases within a 30-day period).
- During any outbreak, masks are required both indoors and outdoors when employees are less than six feet from another person.
- During major outbreaks, six-feet physical distancing is required where feasible, both indoors and outdoors.

The decision to close an individual school will be made by San Mateo County Health and will be based on the number of cases in the school and the percentage of the teacher/students/staff who test positive for COVID-19.

San Mateo County Health may also determine whether school closure is warranted for other reasons, including results from a public health investigation or other local epidemiological data. Once closed, a school may typically reopen after 14 days and the following have occurred:

- Cleaning and disinfection
- Public health investigation
- Consultation with San Mateo County Health