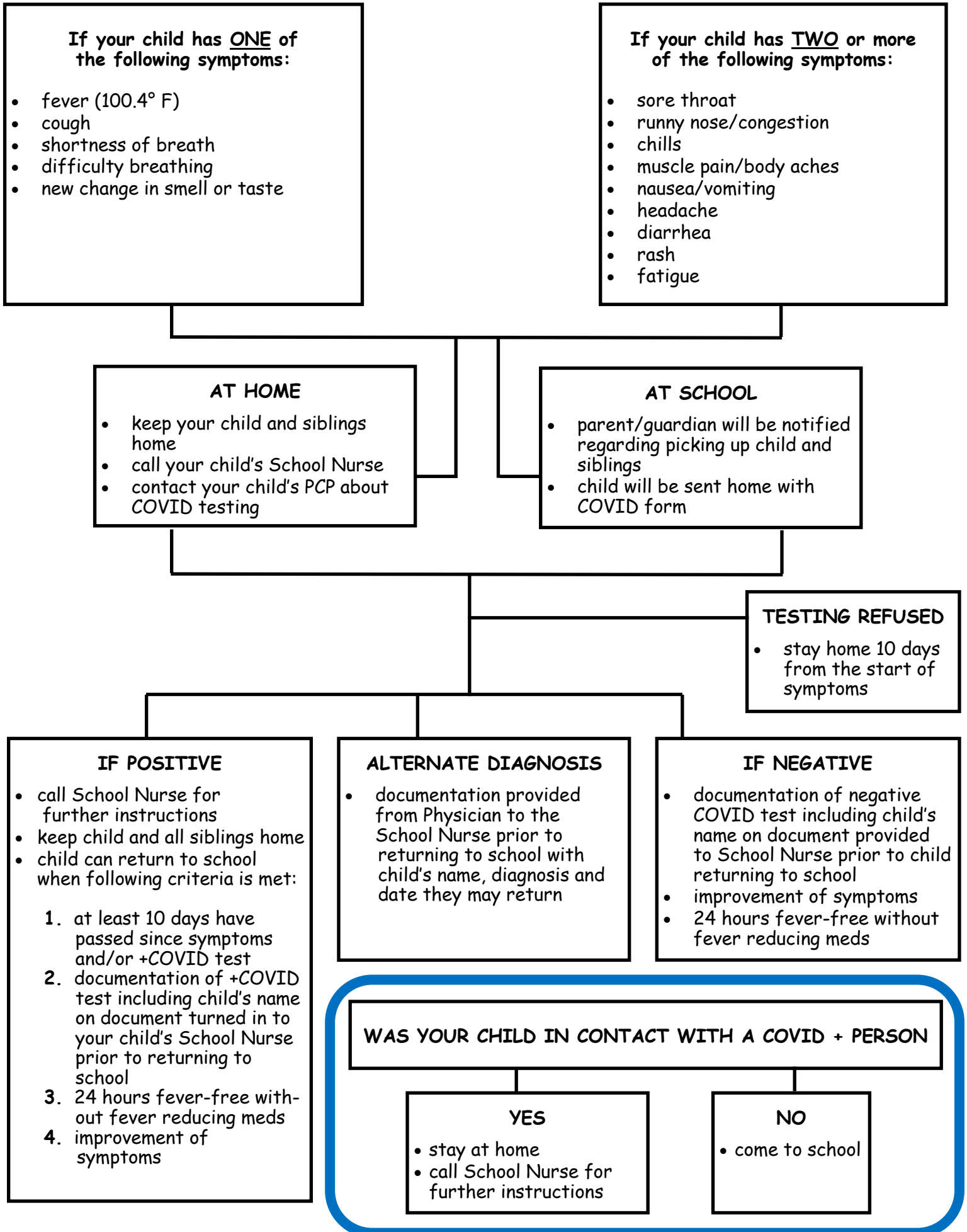


COVID SYMPTOM FLOW CHART



If your child has ONE of the following symptoms:

- fever (100.4° F)
- cough
- shortness of breath
- difficulty breathing
- new change in smell or taste

If your child has TWO or more of the following symptoms:

- sore throat
- runny nose/congestion
- chills
- muscle pain/body aches
- nausea/vomiting
- headache
- diarrhea
- rash
- fatigue

AT HOME

- keep your child and siblings home
- call your child's School Nurse
- contact your child's PCP about COVID testing

AT SCHOOL

- parent/guardian will be notified regarding picking up child and siblings
- child will be sent home with COVID form

TESTING REFUSED

- stay home 10 days from the start of symptoms

IF POSITIVE

- call School Nurse for further instructions
- keep child and all siblings home
- child can return to school when following criteria is met:
 1. at least 10 days have passed since symptoms and/or +COVID test
 2. documentation of +COVID test including child's name on document turned in to your child's School Nurse prior to returning to school
 3. 24 hours fever-free without fever reducing meds
 4. improvement of symptoms

ALTERNATE DIAGNOSIS

- documentation provided from Physician to the School Nurse prior to returning to school with child's name, diagnosis and date they may return

IF NEGATIVE

- documentation of negative COVID test including child's name on document provided to School Nurse prior to child returning to school
- improvement of symptoms
- 24 hours fever-free without fever reducing meds

WAS YOUR CHILD IN CONTACT WITH A COVID + PERSON

YES

- stay at home
- call School Nurse for further instructions

NO

- come to school