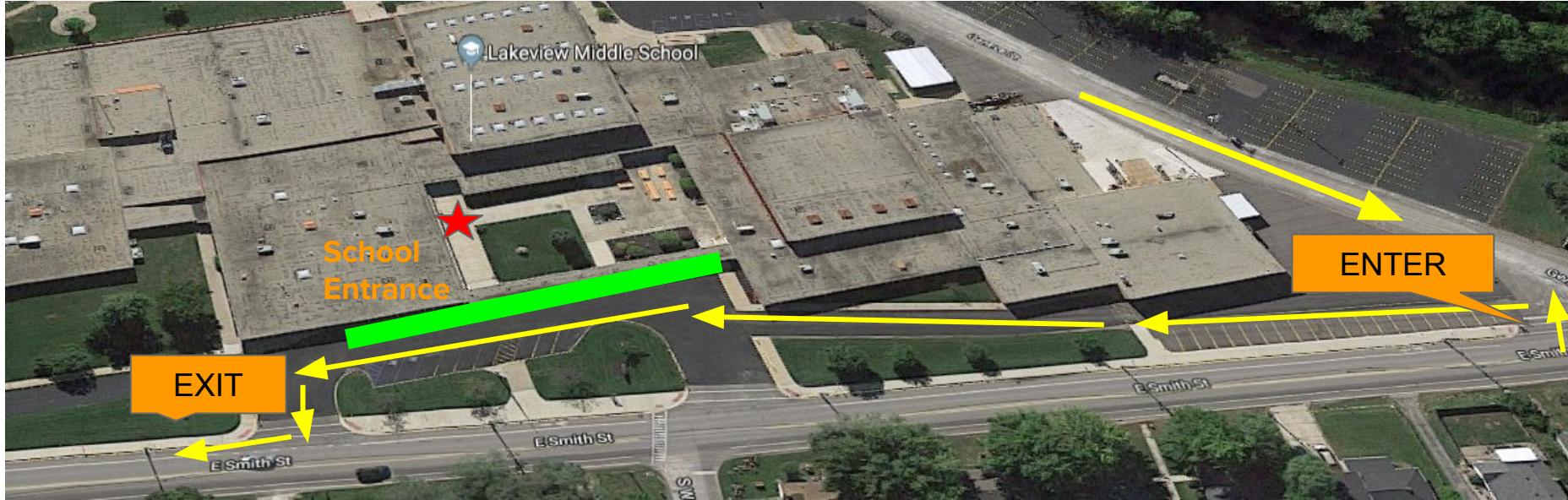


LAKEVIEW MIDDLE SCHOOL

Student Drop-off/Pick-up Procedures

- 1) Please exhibit and display **EXTREME** safety and precaution when dropping off or picking up your student(s). *Student safety is our number 1 priority!*
- 2) Parents/guardians should enter the drop-off/pick-up line on Geneva Street. If traffic is backed up, parents should line up on Geneva Street (west side of building).
- 3) Please pull as far forward as possible before dropping off/picking up students. Drop off area is designated by the green bar on the map below.
- 4) Passengers should **quickly and safely** exit/enter their vehicle to keep traffic flowing.
- 5) Students should exit/enter the vehicle from the **passenger's side door** to avoid walking into potential oncoming traffic.
- 6) After you have dropped of your student(s), please double check to make sure that everyone is clear of the vehicle before your proceed forward. Exit the parking lot at a safe speed.
- 7) Parents/guardians should **ALWAYS USE** the designated drop-off/pick-up line. Parents/guardians should **NEVER** drop off or pick up their student(s) in the parking lot across the street from the school.

Student Drop-off/Pick-up Map



Please **enter** at the intersection of Smith and Geneva streets, follow the yellow arrows, drop students within the **GREEN LINE**, and safely **exit** the line on the east side of the school.