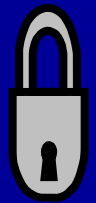


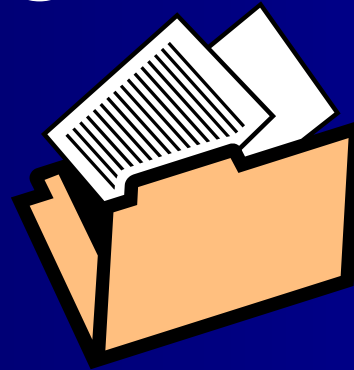
GET YOUR FEDERAL FSA ID HERE:

<https://fafsa.ed.gov/>

- In the top left, click the lock icon
- Go to *Create FAFSA ID Now*



EVERYONE APPLY



Estimate College Cost in Advance

“Find Financial Fit”

→FAFSA4caster.ed.gov

→College Board Net Price Calculator

→Individual School Net Price Calculator

****CHANGE IN TAX INFORMATION
required for filing the FAFSA begins in
the 2017-2018 School Year****

What is the Financial Aid Process?



2 Methods.....

- F.F.A. → Federal (FAFSA)**
- I.F.A. → Institutional (Profile)**
- Student: *Income***
- Assets***
- Parent(s): *Income***
- Assets***

**** *Special Circumstances* ****

Financial Aid Process

	Private	State	Community
Cost of Education	\$55,000	\$25,000	\$ 5,000
E.F.C.	\$10,000	\$10,000	\$10,000
*Need	\$45,000	\$15,000	\$.00

***This may be filled by Financial Aid**

- → Need Blind
- → Full Need

Package

Variety of Aid programs used to equal Total

Cost Example: Total Cost = \$40,000

EFC= \$ 5,000

Need= \$35,000

Pell: \$4,000

TAP: \$5,000

Stafford: \$3,500

SEOG: \$2,000

Job: \$3,000

Perkins: \$2,500

School: \$5,000

NRHSL: \$1,000

Scholar: \$4,000

PLUS: \$4,000

\$34,000

Unmet → \$1,000



What is Financial Aid?

Grants: free money

Pell

TAP

TEACH (for education students in NYS)

AIMS (for top 15% of class, NYS)

School Money/including SEOG

Private Sources

Merit Awards

Loans: to be repaid

Direct Subsidized Loan

Direct Unsubsidized Loan

PLUS

School/Private Loans

Work Study: earned income

EOP/HEOP: Institutional

Scholarships: merit-based, or due to special circumstances, talents scholarship – “Internet”

Scholarships – Private Sources

- ✓ Merit-based
- ✓ Special circumstances, talents, backgrounds

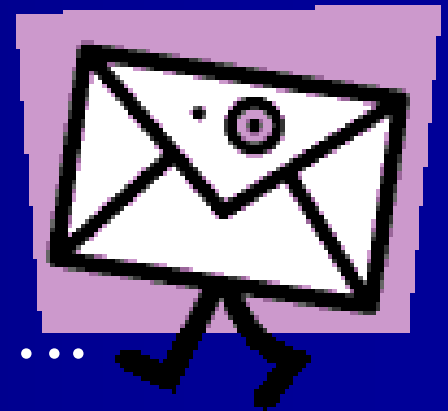
Financial Aid Information Page

www.finaid.org

Fastweb search:

www.fastweb.com

Beware of Scholarship Scams.....



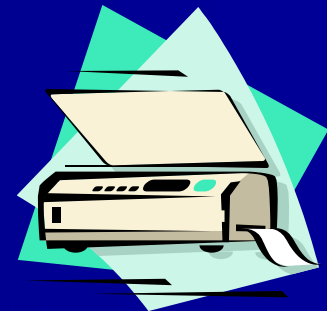
Checklist for FORMS:

1. FAFSA → federal -free form
2. **T.A.P. → NYS only- free form
3. Profile → register, get form – file
4. Individual School Form
5. Scholarship Forms/Loan Forms



Deadlines

Make Copies



I.R.S. Data Retrieval Tool

Check with school as to tool transfer

****Access tax returns to transfer information to FAFSA

****Order I.R.S. tax return transcript & mail to college

Easy as ABC.....

A	pply early, sk questions, ssume nothing, pply anyway
B	e accurate
C	opies of everything, ut off dates, heck everything
D	emand more help. Write, evelop strategies
E	veryone apply!