

# **Arizona Informational Guide to School and Child Care Immunization Requirements**



**Revised August 2015**

## Table of Contents

<b>Introduction .....</b>	<b>3</b>
<b>Important Telephone Numbers &amp; Websites .....</b>	<b>4</b>
<b>School/Child Care Requirements .....</b>	<b>5-6</b>
<b>4 Day Grace Period for Vaccine Doses Administered in Arizona .....</b>	<b>7</b>
<b>Types of Exemptions .....</b>	<b>8-9</b>
<b>Conditional Admissions .....</b>	<b>10</b>
<b>Required Record Keeping Forms .....</b>	<b>11</b>
<b>Assessment &amp; Special Surveys .....</b>	<b>12</b>
<b>Vaccine Names .....</b>	<b>13-14</b>
<b>Important Links .....</b>	<b>15</b>
<b>Appendix .....</b>	<b>16-22</b>
• Exhibit 1a: Flow Chart DTap Requirements for Children Birth-5 years of Age in Preschool, Head Start and Child Care Settings	
• Exhibit 1b: Flow Chart Polio Requirements for Children Birth-5 years of Age in Preschool, Head Start and Child Care Settings	
• Exhibit 1c: Flow Chart MMR Requirements for Children Birth-5 years of Age in Preschool, Head Start and Child Care Settings	
• Exhibit 1d: Flow Chart Hib Requirements for Children Birth-5 years of Age in Preschool, Head Start and Child Care Settings	
• Exhibit 1e: Flow Chart Hep B Requirements for Children Birth-5 years of Age in Preschool, Head Start and Child Care Settings	
• Exhibit 1f: Flow Chart Varicella Requirements for Children Birth-5 years of Age in Preschool, Head Start and Child Care Settings	
• Exhibit 2: Arizona Lifetime Immunization Record (LIRC 3000)	

## Introduction

The Arizona Department of Health Services (ADHS), Arizona Immunization Program Office (AIPO) appreciates the time and effort the staff of schools and child care centers invest in verifying that enrolled children are appropriately immunized and submitting the annual Immunization Data Report to ADHS/AIPO.

AIPO has assembled this Guide to be used as a reference and resource. The information contained within has been compiled based upon immunization requirements and from frequently asked questions, requests and recommendations from school health staff, teachers and child care staff. AIPO hopes you find this Guide useful and that it will expedite the process of immunization verification and reporting.

**Updates to immunization requirements and forms will be posted on the AIPO website at: <http://www.azdhs.gov/phs/immun/>. Please check the website before the onset of each new school year for updated materials.**

From this website, you can access a variety of immunization resources, including links to:

- ❑ Master copies of Child Care Immunization Data Report (IDR) forms (updated annually)
- ❑ Arizona immunization requirements for schools and child care centers
- ❑ Recommended childhood and adult immunization schedules
- ❑ Resources about where to go to receive immunizations
- ❑ Information about vaccine-preventable diseases
- ❑ County, state and national immunization resources

If you have suggestions for additions or changes, please call or contact:

Arizona Department of Health Services  
Immunization Program  
150 North 18<sup>th</sup> Avenue, Suite 120  
Phoenix, AZ 85007-3233  
(602) 364-3630  
(866) 222-2329 Toll-Free Number  
(602) 364-3285 Fax Number

## Important Telephone Numbers & Websites

### State Offices

- Arizona Immunization Program Office (AIPO)..... (602) 364-3630
- Helpline for Schools/ Child Care – Toll Free Number ..... (866) 222-2329
- Arizona State Immunization Information System (ASIIS) ..... (602) 364-3899
  - Toll-Free Number..... (877) 491-5741
- Arizona Department of Education – Health & Nutrition Services..... (602) 542-8700
- Arizona Office of Child Care Licensing ..... (602) 364-2539

### County Offices

- Apache County Public Health Services District..... (928) 333-2415
- Cochise Health and Social Services..... (520) 432-9468
- Coconino County Public Health Services District..... (928) 679-7337
- Gila County Division of Health & Emergency Services..... (928) 425-3189
- Graham County Health Department..... (928) 428-0110
- Greenlee County Health Department ..... (928) 865-2601
- La Paz County Health Department..... (928) 669-6155
- Maricopa County Department of Public Health ..... (602) 506-6900
  - Immunization Program & Communicable Disease Reporting ..... (602) 506-6767
- Mohave County Department of Public Health ..... (928) 753-0714
- Navajo County Public Health Services District ..... (928) 532-6050
- Pima County Health Department..... (520) 243-7988
  - Immunization Program..... (520) 243-7763
- Pinal County Public Health Services District ..... (520) 866-7282
- Santa Cruz County Health Department..... (520) 375-7800
  - Mariposa Community Health Center for Santa Cruz ..... (520) 375-5046
- Yavapai County Community Health Services ..... (928) 442-5446
- Yuma County Public Health Services District ..... (928) 317-4559

### Resource Websites

- ADHS/AIPO School Forms and Guidance <http://azdhs.gov/phs/immunization/school-childcare/requirements.htm>
- ADHS/AIPO ASIIS Registry – Enrollment <https://asiis.azdhs.gov/>  
(enroll to access immunization records of students)
- Centers for Disease Control & Prevention <http://www.cdc.gov/vaccines/default.htm>
- The Arizona Partnership for Immunization <http://www.whylimmunize.org/>
- Immunization Action Coalition <http://www.immunize.org/>

# School/Child Care Requirements

*Arizona Revised Statutes 15-871; Arizona Administrative Code R9-6-701 through 708*

---

Before a child may attend any Arizona school or child care center (public, private, parochial, or charter), Arizona law requires that an immunization record be presented to the school or child care staff by the parent/guardian. The immunization record is usually the one given to parents/guardians by their doctor or clinic, and must show the date each required vaccine dose was received as well as the signature or stamp of the health care provider. Acceptable forms of immunization records to enter school or child care include:

- ❑ A copy of the Arizona Lifetime Immunization Record
- ❑ A copy of the vaccine administration record from the health care provider
- ❑ A computer-generated immunization record from the Arizona State Immunization Information System (ASIIS) or from an immunization registry of another state
- ❑ A signed and dated Arizona School Immunization Record - [ASIR109R form](#) completed by a school the child has attended (a copy is acceptable)
- ❑ An immunization record generated by a school's immunization software system, as long as the school name, school address, school contact person, child's name, child's date of birth, and child's immunization dates are included
- ❑ A signed and dated immunization record or school/child care immunization record from another state

To meet Arizona requirements for immunization records, the dates of all vaccine doses must contain the month, day and year the vaccine was administered. Immunization records that contain the month and year are only acceptable for non-MMR doses that were administered prior to January 1, 2003. **A record with "check marks," "up to date," "all requirements met," or "series is complete" instead of dates is not acceptable.**

**School Immunization Requirements:** Authorized school personnel must review each child's immunization record(s) at the time of enrollment. A review of immunizations must also be completed at least once during the school year. If a child lacks any required immunization doses, the school must give the parent/guardian the [Referral Notice of Inadequate Immunization for School](#) stating which immunizations are needed. Children must obtain required immunization(s) prior to attending school. If a child requires more than one dose of a specific type of vaccine, the child may continue to attend school during the minimum interval between doses. See the following link for requirements: [2014-2015 Arizona School Immunization Requirements, K-12](#)

**Homeless pupils:** ARS 15-872 states that homeless pupils are not required to provide documentary proof of immunization until the fifth calendar day after enrollment in school. [Homeless Student Resources](#)

**Child Care Immunization Requirements:** Authorized child care personnel must review each child's immunization record(s) at the time of enrollment. If the child lacks immunizations required for child care attendance, the child care center must give the parent/guardian the: "[Referral Notice of Inadequate Immunization for Child Care and Preschool](#)" form, stating which immunizations are needed. The child's parent/guardian has **15 days** to provide the child care center with proof of all required immunizations, or an acceptable alternative such as an exemption. The child shall be excluded from the center if the parent/guardian of the child fails to provide adequate documentation. See "[2014-2015 Arizona Immunization Requirements for Birth to 5 Years- Childcare, Preschool and Kindergarten in 2014-2015](#)".

## 4-Day Grace Period



### *Division of Public Health Services*

*Office of the Assistant Director*

*Public Health Preparedness Services*

150 N. 18<sup>th</sup> Avenue, Suite 120

Phoenix, Arizona 85007

(602) 364-3630

(602) 364-3285 FAX

Internet: [www.azdhs.gov](http://www.azdhs.gov)

JANICE K. BREWER, GOVERNOR

WILL HUMBLE, DIRECTOR

### **4-Day Grace Period\* for Vaccine Doses Administered in Arizona**

The Advisory Committee on Immunization Practices (ACIP) allows for most vaccine doses administered within 4 days of the recommended minimum age interval to be counted as valid. However, the 4-day grace period does not apply in all situations. It does not allow a 4-day grace period between doses of varicella and MMR vaccines. They must be administered on the same day, or at least 28 days apart.

The Arizona Immunization Program Office (AIPO) accepts vaccine doses given within the ACIP-approved grace period as valid for child care and school entry. The 4-day grace period includes the first MMR, which may be counted if it was administered no sooner than 4 days before the child's first birthday.

It is **not recommended** that providers schedule immunization doses prior to the ACIP recommended minimum ages and intervals. The *Summary of Recommendations for Childhood and Adolescent Immunization* including guidance regarding minimum ages and intervals for vaccine doses may be found at [Summary of Child/Teen Immunization Recommendations](#). ACIP's *General Recommendations on Immunization* published January 28, 2011 can be found at <http://www.cdc.gov/mmwr/pdf/rr/rr6002.pdf>. The table of *Recommended and minimum ages and intervals between vaccine doses* can be found on page 36.

- *\*First published in February 2008, this is now considered standard practice according to ACIP recommendations-updated July, 2014*

## Types of Exemptions

The Arizona School/Child Care Immunization Law allows for some specific exemptions to immunizations.

**\* The Arizona Immunization Program Office strongly recommends use of exemptions as an ultimate alternative and promotes strong education for parents and providers so that parents may make informed decisions regarding immunizations for their children. Exemptions provide an option for the parents of children who have specific aversions to immunizations whether it is a medically relevant reason, inherent personal belief, or religious belief.**

### Medical Exemptions:

**Medical Exemption Form:** [Request for Medical Exemption to Immunization](#)

- **Permanent** - If the child has a medical condition that contraindicates administration of one or more immunization(s), the child can be exempted from that/those immunization(s). The "Medical Exemption Form" must be completed and signed by the child's physician or nurse practitioner and parent/guardian, and submitted before the child enters school and/or within 15 days of child care entry.
- **Temporary** - If the child has a temporary medical condition, the "Medical Exemption Form" must be completed and submitted as outlined above. The form must state the length of time for the exemption and the date the exemption ends. Once the length of time for the exemption has ended, the child must receive the necessary immunization(s) or be subject to exclusion from school or child care.
- **Laboratory Evidence of Immunity** - If the child has had a vaccine preventable disease and the parent does not want the child immunized against the disease, laboratory proof of immunity to that disease must be submitted. A copy of the laboratory results that prove immunity must be kept on file, along with an exemption form completed by the child's physician and parent/guardian.
- **History of Chicken Pox:**
  - Students attending school or preschool in Arizona prior to 9/1/2011 with parental recall of chicken pox disease are allowed to continue attendance with recall.
  - Students enrolling in school or preschool in Arizona for the first time after 9/1/2011 are now required to present proof of varicella immunization or a valid exemption for medical reasons, laboratory evidence of immunity or personal beliefs.



**Personal Beliefs Exemption:** If immunizations are against the personal beliefs of the parent, the ["Request for Personal Belief Exemption to Immunization"](#) must be completed and signed by the parent/guardian. **This exemption only applies to schools grades K-12. Child care centers, preschool and Head Start may NOT use personal belief exemptions.**

**Religious Beliefs Exemption:** If immunizations are against the religious beliefs of the parent, the ["Request for Religious Belief Exemption to Immunization"](#) must be completed and signed by the parent/guardian. **This exemption only applies to child care centers, preschool and Head Start. Grades K-12 may NOT use religious belief exemptions.**

**NOTE: In the event of an outbreak of a vaccine-preventable disease,** children who are exempt for reasons other than laboratory evidence of immunity may be excluded from school or child care until the risk period for exposure ends. Schools and child care centers should seek guidance from their local county health department before excluding exempt children.

## Conditional Admissions

### A. **There are several situations in which children can enter child care or school conditionally without fully completed vaccinations**

1. Delayed Completion of Any Immunizations - For children who have not completed the series of: Inactivated Polio (IPV); diphtheria, tetanus and pertussis (DTaP/DTP/DT; hepatitis A (Hep A) (if required for child care and Head Start); hepatitis B (Hep B); haemophilus influenza type b (Hib); measles, mumps and rubella (MMR); Varicella (VAR), but are now in the process of completing the series, specific time intervals must elapse between doses according to the Advisory Committee for Immunization Practices (ACIP) schedule at [ACIP immunization schedule](#). For guidance on minimum intervals child care settings click [here](#) or see the vaccine flow charts in the Appendix pp. 17-22. For guidance on intervals between doses for students enrolled in Kindergarten-12<sup>th</sup> grade, see age-specific charts located on the useful links page [here](#) or pp. 15. If the next dose is not currently due, the child may enter "on condition" that the remaining doses are received when due.

2. Temporary Medical Exemptions - A child whose health care professional decides to postpone one or more immunization(s) because of a medical condition may enter "on condition" that the needed dose(s) be obtained after the exemption expires. The physician must indicate in writing what immunization(s) must be postponed, a brief explanation of the condition, and when the child is to be immunized.

3. Homeless Pupils - Under ARS 15-872, documentary proof of immunization is not required of homeless pupils until the fifth calendar day after enrollment in school.

### B. **Transfer students:**

When a pupil transfers from another school, parents/guardians must bring their child's immunization record to the new school. Those pupils whose parents/guardians cannot present an adequate record at the time of entry will not be allowed to enter until the cumulative folder/immunization record arrives and demonstrates the student is up to date.

### C. **Admitting children to child care, preschool or Head Start settings:**

Upon enrollment, the administrator of the child care program must review the child's immunization record to determine whether or not the child has documentation of all required vaccine doses. If documentary proof of any doses is missing, the parent/guardian must be given a "[Referral Notice of Inadequate Immunization for Child Care and Preschool](#)" form stating that the child will be excluded if proof of all required doses is not provided within 15 days of attendance.

### D. **When an unmet requirement is found after child has enrolled in school:**

If, after a child has enrolled, (s)he is discovered to be lacking one or more immunizations, the parent/guardian must be notified using the "[School Immunization Screening and Referral Form](#)" form and the child excluded until (s)he is compliant with the requirements.

## Required Recordkeeping Forms

### Schools:

The Arizona School Immunization Record (ASIR) located at [ASIR109R form](#) is the State-required form that is to be used by all public, private, parochial and charter schools to document immunizations for all pupils. A copy of the ASIR form must be kept in each student's active health file. This form becomes part of the pupil's permanent file.

School nurses who administer immunizations are mandated under A.R.S. § 36-135, to report the immunization data to the Arizona State Immunization Information System (ASIIS). For more information on ASIIS, please contact (602) 364-3899; outside of Maricopa County callers may call toll free: (877) 491-5741 or visit the ASIIS website at <http://www.azdhs.gov/phs/asiis>.

### Child Care Centers:

The Emergency Immunization and Information Record Card (EIIRC 201) is the State-required form to be used in licensed child care centers and ADHS group homes. A copy of an enrolled child's written immunization record and/or exemption form must be attached to the Record Card and kept in the child's health file. Reminder: The EIIRCs also contain vital emergency information as well as immunization data. These cards must be stored to allow for prompt evacuation or speedy emergency information for each child at the center. The EIIRC must be kept readily available during the child's attendance at the child care center and be kept in a separate file on facility premises for one year after the child leaves the center according to R9-5-304(D)(2).

The Emergency Immunization and Information Record Card (EIIRC 201) can be obtained from the Bureau of Child Care Licensing website at: [EIIRC 201](#)

### Computerized Immunization Records:

Many schools and child care centers use a computer software program to track the immunizations of enrolled children. Schools are required to have a complete and up-to-date hard copy of the Arizona School Immunization Record - [ASIR109R form](#) on file for each enrolled student. Schools may use the record printed from their software system as a substitute for the ASIR only if the format of the record is an exact match with the ASIR. All areas of the ASIR must be included and must be in the same locations on the form. Child care centers must maintain copies of the child's immunization records, signed or stamped by the immunization provider, and attached to the child's EIIRC 201.

## Assessments and Special Surveys

Arizona Revised Statutes and Administrative Code require that schools and child care centers submit an annual Immunization Data Report (IDR) to ADHS or their local county health department. **The Immunization Data Report is due by November 15<sup>th</sup> each year.**

### **Preschool/Child Care and Schools:**

Child Cares and Schools are required to report the immunization status of students enrolled in child care, preschool, kindergarten and sixth grade. Reports on students are submitted to ADHS through an online web-based Immunization Data Report system, currently located at <https://app.azdhs.gov/IDR/>. The online system is available for child care centers and schools to enter their data beginning in September each year.

Upon completion of the online web-based Immunization Data Report, the staff member who completes the report(s) prints a copy of the report for the school administrator to review. The printed report lists the number and percentage of students who are fully immunized for each type of vaccine. The IDR also lists the level of compliance with the immunization laws and requirements.

For more information and training documents please visit our website at:

<http://azdhs.gov/phs/immunization/school-childcare/data-reports.htm>

### **What does ADHS do with the immunization data reported by schools and child care centers?**

The ADHS Immunization Program Office provides feedback to schools and child care centers that are not in compliance with immunization requirements mandated by Arizona Revised Statutes and Arizona Administrative Code. The Immunization Program analyzes reports to identify communities that are at higher risk of outbreaks of vaccine preventable diseases and shares this information with local county health departments, the Arizona Department of Education and the ADHS Office of Child Care Licensing. A summary of school immunization data is also submitted to the Centers for Disease Control and Prevention (CDC) in an annual report.

## Vaccine Names

**Unfortunately, there is no standardized set of terms for childhood vaccines used by all providers** when recording immunizations on immunization records. As new vaccines and combination vaccines are used, the number of names found on records multiplies, especially when vaccine brand names are used. The following is a list of terms you may encounter on immunization records. **The preferred term for each vaccine is underlined.** When combination vaccines are given, they should be recorded under each individual component, not as the combination.

Vaccine	Preferred Abbreviation	Other Names		
DTP (diphtheria, tetanus, and pertussis)	<u>DTP</u>	Tri-Immunol	DTwP	DTPw
DTP-Hib	<u>DTP-Hib</u>	Tetramune	ActHIB-DTP	OmniHIB-DTP
DTaP (diphtheria, tetanus, acellular pertussis)	<u>DTaP</u> (do not give $\geq 7$ years of age)	Tripedia DTPa	Acel-Imune Daptacel	Infanrix
DTaP-Hib	<u>DTaP-Hib</u>	ActHIB-Tripedia	Tripedia-ActHIB	TriHIBiT
DTaP/IPV	<u>DTaP/IPV</u>	DTaP/polio	Kinrix	
DTaP-HepB-IPV	<u>DTaP-HepB-IPV</u>	Pediarix		
DTaP-Hib-IPV	<u>DTaP-Hib-Polio</u>	Pentacel		
DT (Diphtheria Tetanus)	<u>DT</u> (do not give after $\geq 7$ years of age)			
Td (Tetanus diphtheria)	<u>Td</u> (give $\geq 7$ years of age)	Decavac	Tenivac	
Tdap (Tetanus, diphtheria, acellular Pertussis)	<u>Tdap</u> (give $\geq 11$ years of age but ok to give at 7 yrs)	Adacel	Boostrix	
Hib (Haemophilus influenzae type b)	<u>Hib</u>	HibTITER ProHIBiT HbOC H flu	ActHIB OmniHIB PRP-O PRP-T	PedvaxHIB PRP-ID HbCV
MMR (measles, mumps, rubella)	<u>MMR</u>	MMRII		
Polio	<u>OPV</u> (Oral Polio) <u>IPV</u> (Inactivated Polio)	Orimune IPOL	polio polio	Sabin Salk
Hepatitis B	<u>Hep B</u>	Recombivax HB Engerix-B	Recombivax Engerix	HBV
Hepatitis B-Hib	<u>Hep B-Hib</u>	COMVAX	HBV/Hib	Hib/Hep B
Hepatitis B-Hepatitis A	<u>Hep B-Hep A</u>	Twinrix		
Varicella (chicken pox)	<u>VAR</u>	Varivax	VZV	Chickenpox

Hepatitis A	<u>Hep A</u>	VAQTA	Havrix HAV	Havrix
Pneumococcal Conjugate Vaccine 7 Valent	<u>PCV7</u>	Prevnar	Pneumo Conj	
Pneumococcal Conjugate Vaccine 13 Valent	<u>PCV13</u>	Prevnar	Pneumo Conj	
Pneumococcal Polysaccharide Vaccine 23 Valent	<u>PPV23</u>	Pnu-Immune	Pneumovax	
Influenza	<u>Influ</u>	Flu Fluvirin Fluzone	Fluarix FluLaval FluMist	TIV LAIV
Rotavirus	<u>RV</u>	RotaTeq	RRV-TV - Rotashield (No longer available)	Rotarix
Meningococcal	<u>MCV4</u> <u>MPSV</u>	Menactra Menomune	Menveo	
Human Papilloma Virus	<u>HPV</u>	Guardasil	Cervarix	
Herpes Zoster	<u>HZ</u>	Zostavax	Shingles	
DTaP/IPV/Hib	Pentavalent Vaccine (Canada)			
DTP/Hib/HepB	Pentavalente or Quintuple Vaccine (Mexico)			
DTP/Hib	Combination Quadruple Vaccine (Mexico)			
VAR (Varicella)	Vaxigrip Resfriado (Mexico)			
Gripe (Mexico)	Influenza			
The following are other immunizations you may find on a child's immunization record:				
<u>BCG</u>	Bacillus Calmette-Guerin (for Tuberculosis)			
<u>Cocci</u>	Skin test for Coccidiomycosis (Valley Fever)			
<u>HBIG</u>	Hepatitis B Immune Globulin			
<u>M</u>	Attenuvax, measles, sarampion: <u>measles vaccine only</u> , commonly seen on immunization records from Mexico. <b><u>This is not MMR and does not count as a dose of MMR. Child should be referred for MMR.</u></b>			
<u>PPD</u>	Purified Protein Derivative (TB skin test). Also: Tine Mantoux			
<u>IG</u>	Immune Globulin			
<u>GG</u>	Gamma Globulin			
<u>Meningococal:</u> • <u>A</u> • <u>C</u> • <u>A/C</u> • <u>B</u>	Meningitis: ** if these particular doses are seen, they do not/may not meet school requirement. Students with these should be referred to their Primary Care Provider for evaluation.			

## Important Links

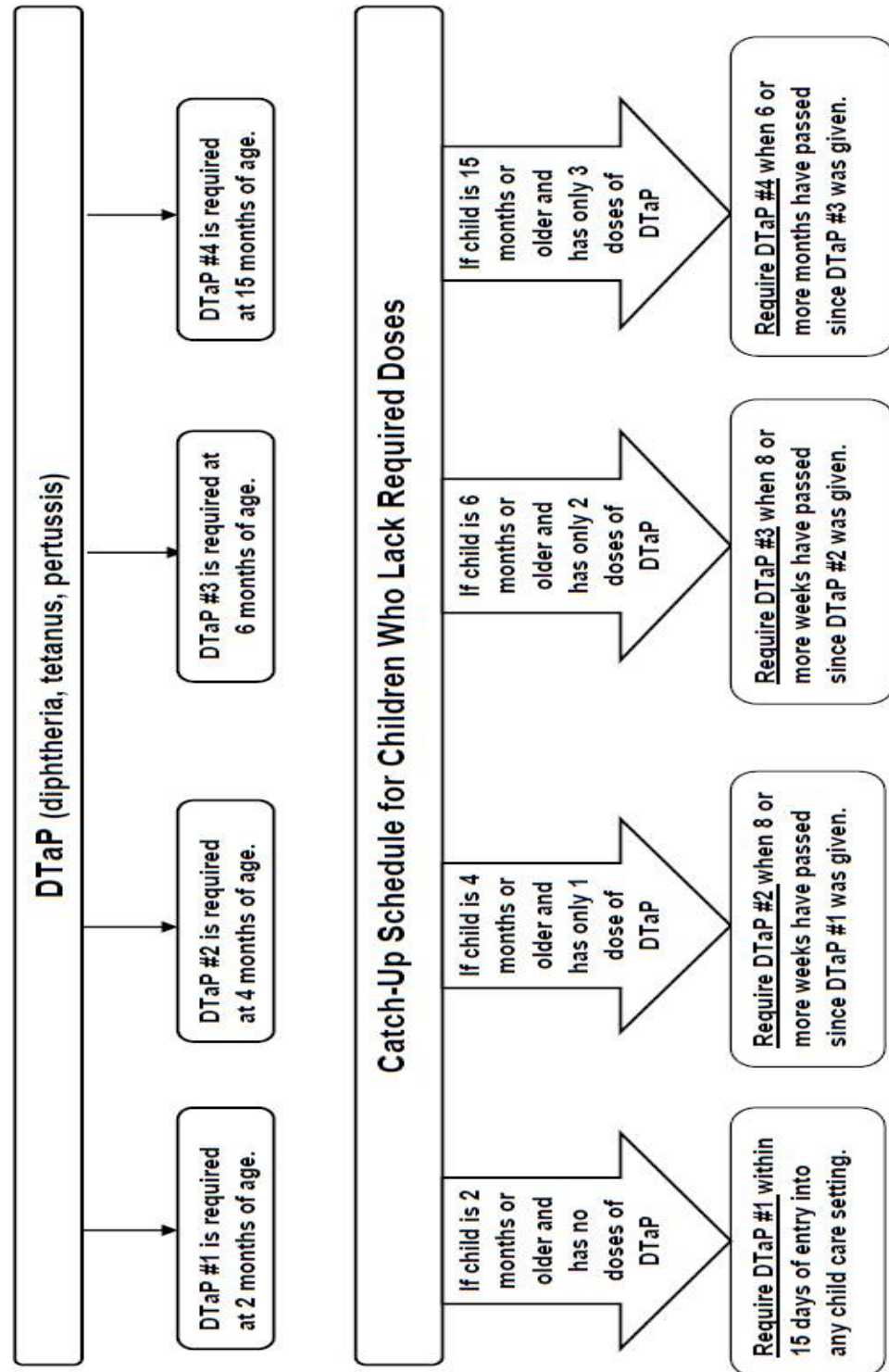
- [Arizona Immunization Program Home](#)
- [School Immunization Toolkit](#)
- [Childcare Immunization Toolkit](#)
- [Arizona School Immunization Requirements, K-12](#)
- [Arizona Immunization Requirements for Birth to 5 Years](#)
- [2014-2015 Arizona School K-12 School Immunization Requirements for Children under 7 Years of Age](#) - Chart
- [2014-2015 Arizona School K-12 School Immunization Requirements for Children 7 to 10 years of Age](#) -Chart
- [2014-2015 Arizona School K-12 School Immunization Requirements for Children 11 Years of Age and Older](#) -Chart
- [School Immunization Screening and Referral Form](#) - English pg. 1 & Spanish pg. 2
- [Referral Notice of Inadequate Immunization for Child Care and Preschool](#)
- [Referral Notice of Inadequate Immunization for Child Care and Preschool- Spanish](#)
- [Schools \(K-12th Grade\) Request for \*\*Personal Belief Exemption\*\* to Immunization](#)
- [Schools \(K-12th Grade\) Request for \*\*Personal Belief Exemption\*\* to Immunization: Spanish](#)
- [Child Care Centers, Preschool & Head Start and Schools \( K-12\) request for \*\*Medical Exemption\*\* to Immunization](#)
- [Child Care Centers, Preschool & Head Start and Schools \( K-12\) request for \*\*Medical Exemption\*\* to Immunization: Spanish](#)
- [Child Care Centers, Preschool & Head Start Request for \*\*Religious Belief Exemption\*\* to Immunization](#)
- [Child Care Centers, Preschool & Head Start Request for \*\*Religious Belief Exemption\*\* to Immunization: Spanish](#)
- [Arizona School Immunization Record: ASIR109R form](#)

# Appendix



# Arizona Immunization Requirements for Children Birth to 5 Years In Preschool, Head Start and Child Care Settings

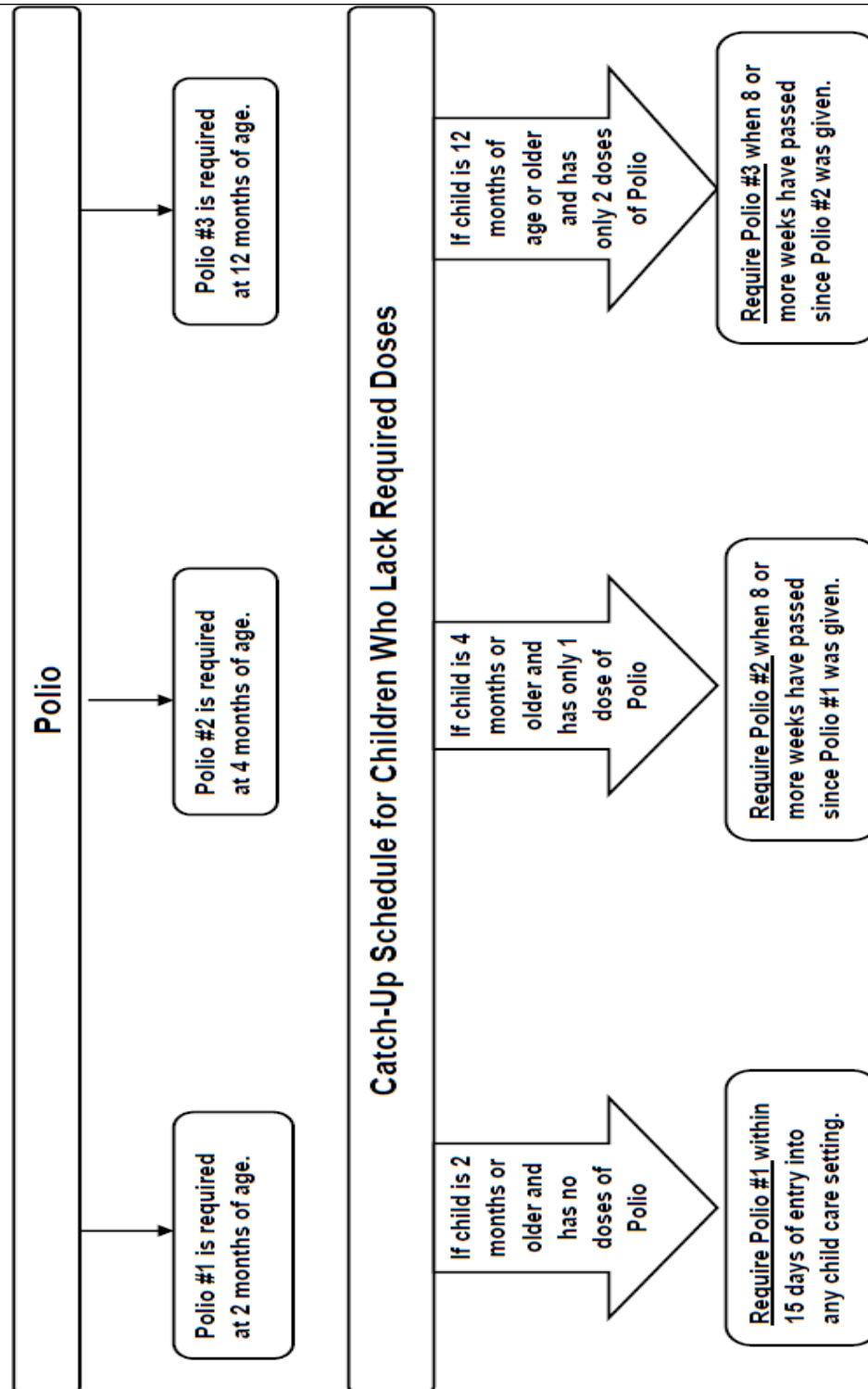
## Exhibit 1a: **DTaP Requirements** for Children Birth through 5 Years in Preschool, Head Start and Child Care Settings



Rev. 06/20/12

**Exhibit 1b: Polio Requirements** for Children Birth through 5 Years in  
Preschool, Head Start and Child Care Settings

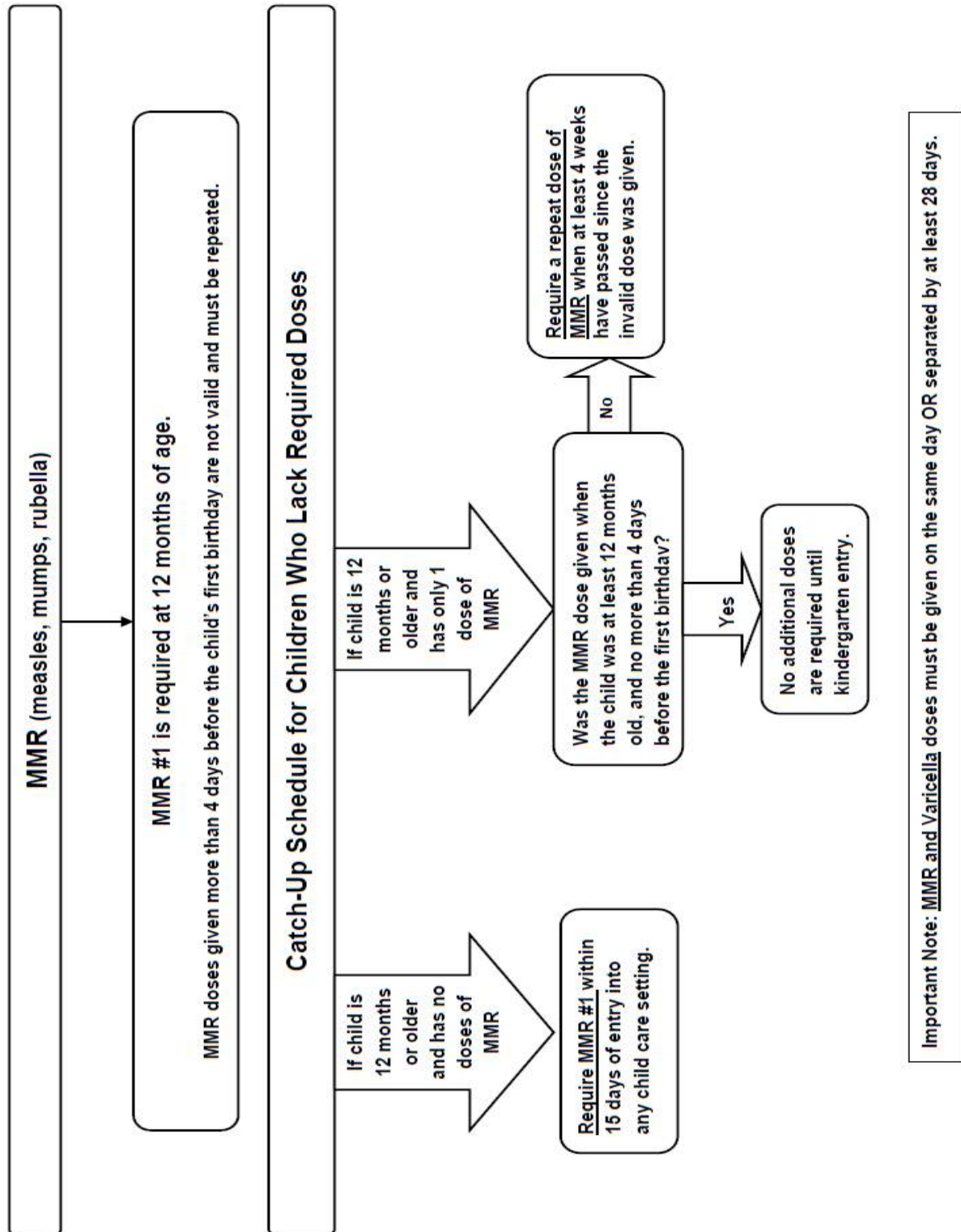
**Arizona Immunization Requirements for Children Birth to 5 Years  
In Preschool, Head Start and Child Care Settings**



Rev. 08/2012

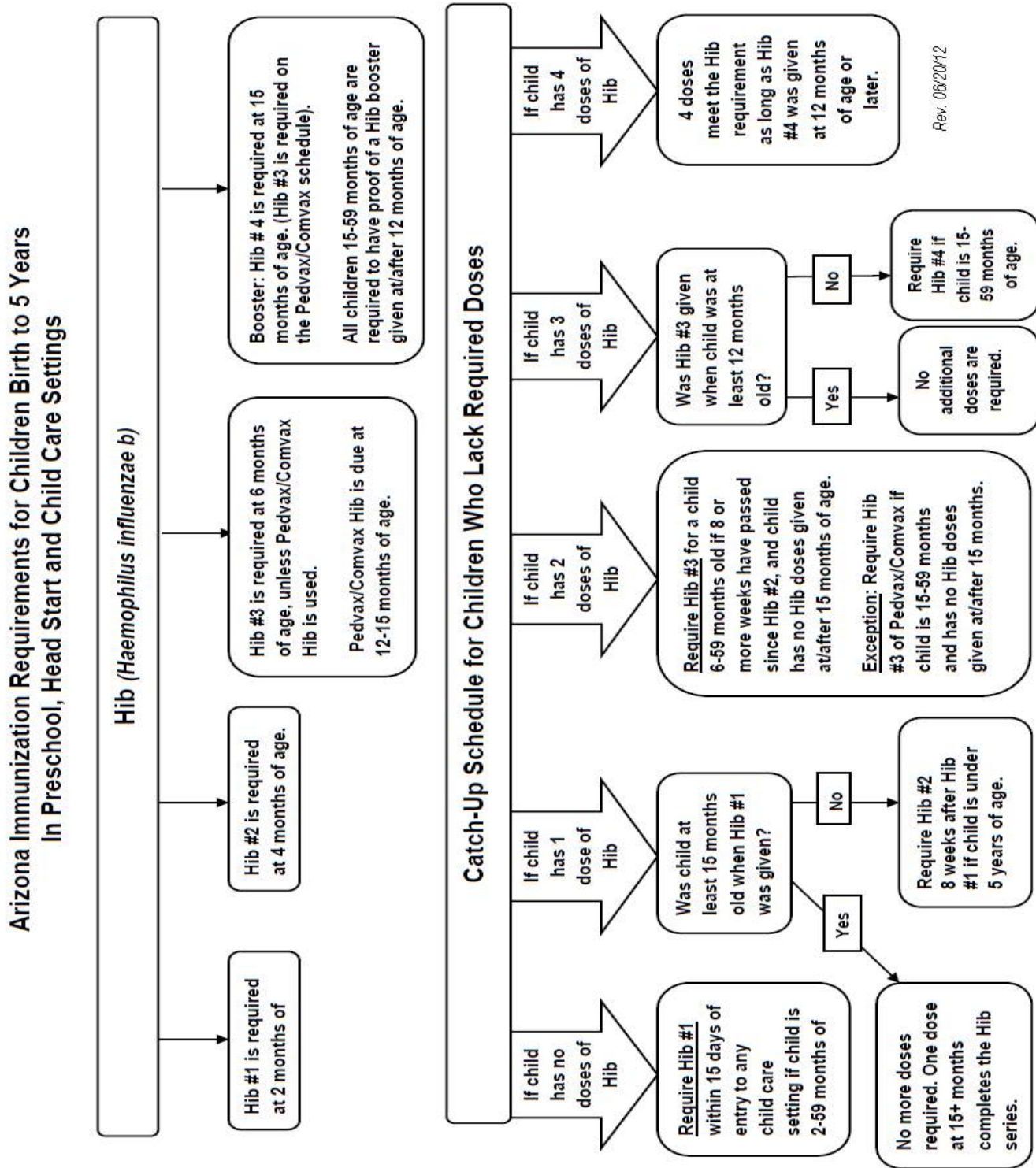
## Exhibit 1c: **MMR Requirements** for Children Birth through 5 Years in Preschool, Head Start and Child Care Settings

### Arizona Immunization Requirements for Children Birth to 5 Years In Preschool, Head Start and Child Care Settings



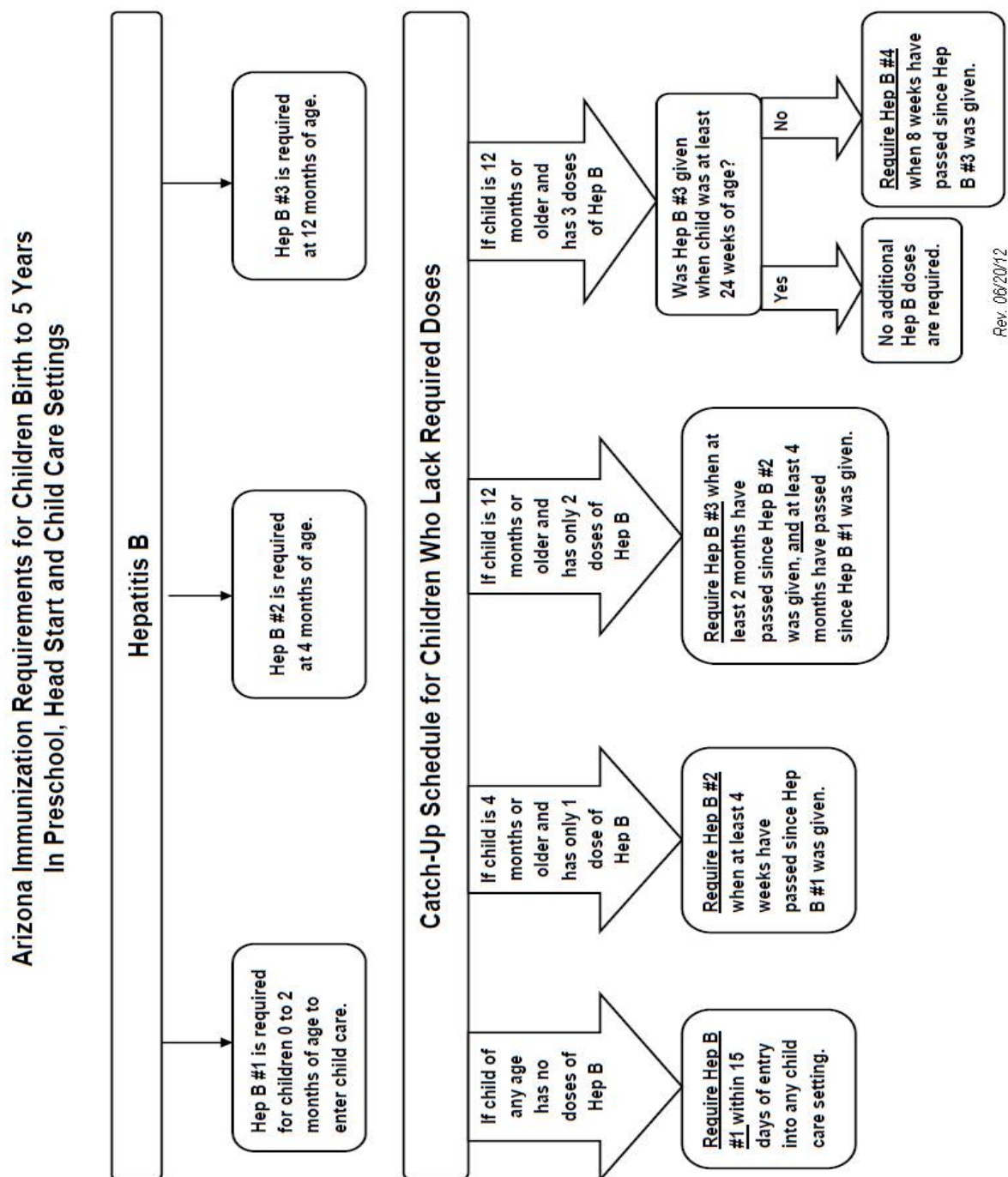
Rev. 06/20/12

## Exhibit 1d: Hib Requirements for Children Birth through 5 Years in Preschool, Head Start and Child Care Settings



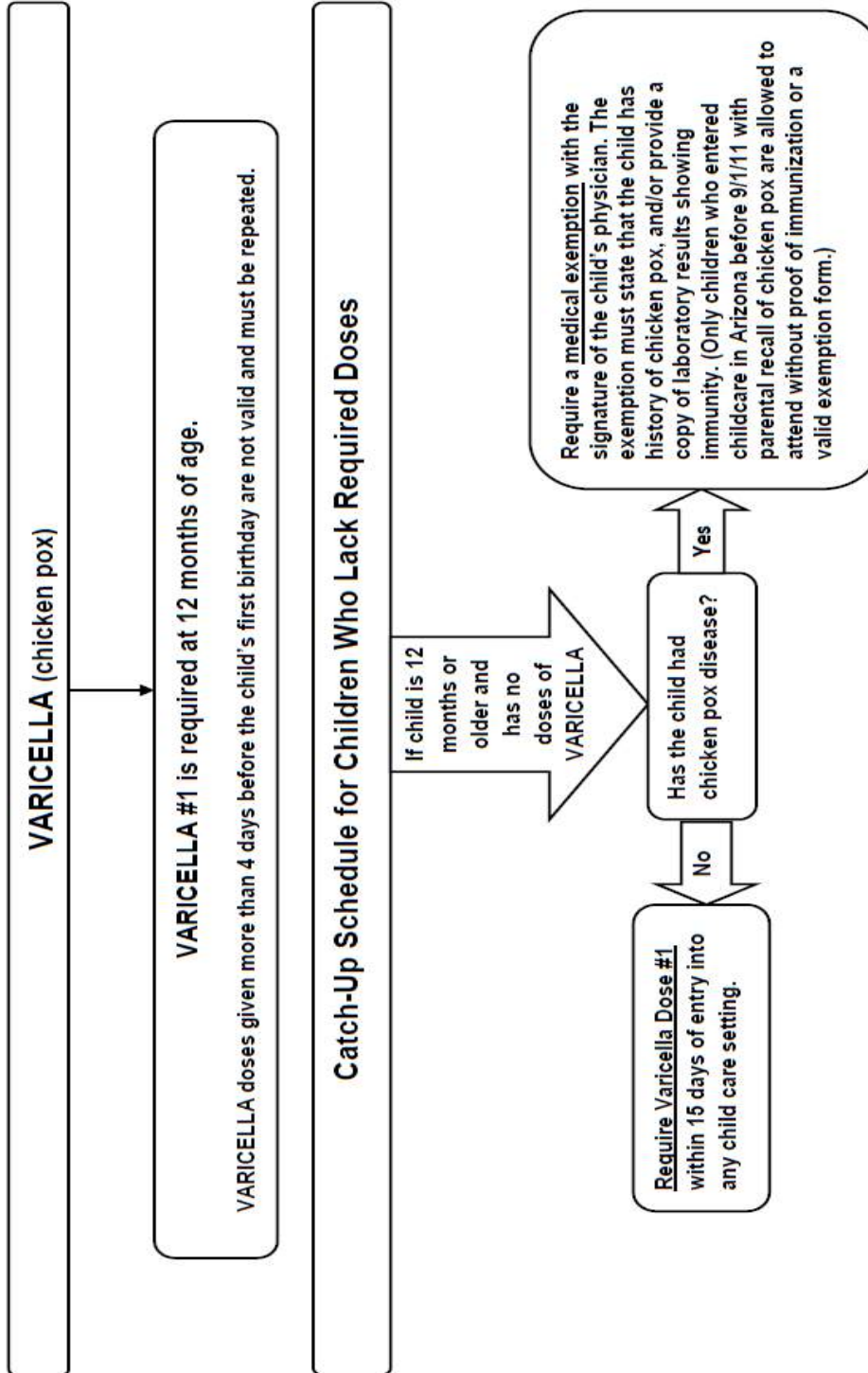


## Exhibit 1e: **Hep B Requirements** for Children Birth through 5 Years in Preschool, Head Start and Child Care Settings



## Exhibit 1f: **Varicella Requirements** for Children Birth through 5 Years in Preschool, Head Start and child Care Settings

### Arizona Immunization Requirements for Children Birth to 5 Years In Preschool, Head Start and Child Care Settings



**Important Note:** VARICELLA and MMR doses must be given on the same day OR separated by at least 28 days.

Rev. 06/20/12

## Exhibit 2: Arizona Lifetime Immunization Record (LIRC 3000)

<b>Name:</b>			<b>Date of Birth:</b>			
<b>Type of Vaccine</b>	1 <sup>st</sup> Mo/Day/Yr	2 <sup>nd</sup> Mo/Day/Yr	3 <sup>rd</sup> Mo/Day/Yr	4 <sup>th</sup> Mo/Day/Yr	5 <sup>th</sup> Mo/Day/Yr	
<b>(DTaP/DTP/DT)</b> Diphtheria, Tetanus, Pertussis	/ /	/ /	/ /	/ /	/ /	
Signature of Provider						
<b>(IPV) Polio</b>	/ /	/ /	/ /	/ /	/ /	
Signature of Provider						
<b>(Hib) Haemophilus influenzae type B</b>	/ /	/ /	/ /	/ /	<b>Notes:</b>	
Name of Hib Manufacturer						
Signature of Provider						
<b>(PCV7) Pneumococcal Conjugate</b>	/ /	/ /	/ /	/ /		
Signature of Provider						
<b>(Hep B) Hepatitis B</b>	/ /	/ /	/ /	/ /		
Signature of Provider						
<b>(Hep A) Hepatitis A</b>	/ /	/ /	/ /			
Signature of Provider						
<b>(RV) Rotavirus</b>	/ /	/ /	/ /			
Signature of Provider						
<b>(MMR) Measles, Mumps, Rubella</b>	/ /	/ /	/ /			
Signature of Provider						
<b>(VAR) Varicella</b> ✓ <input type="checkbox"/> box if Hx of	/ /	/ /	/ /			
Signature of Provider						
<b>(Flu) Influenza</b>	/ /	/ /	/ /	/ /		
Signature of Provider						
<b>(HPV) Human Papilloma Virus</b>	/ /	/ /	/ /	/ /		
Signature of Provider						
<b>(Td) Tetanus, Diphtheria</b>	/ /	/ /	/ /	/ /		
Signature of Provider						
<b>(Tdap) Tetanus, Diphtheria, Pertussis</b>	/ /	/ /				
Signature of Provider						
<b>(MCV4) Meningococcal Conjugate</b>	/ /	/ /				
Signature of Provider						
<b>(PPV23) Pneumococcal</b>	/ /	/ /				
Signature of Provider						
<b>Other:</b>	/ /	/ /	<b>Newborn Screen</b>	<b>Date</b>	<b>Result</b>	<b>Provider</b>
Signature of Provider						
<b>Other:</b>	/ /	/ /	<b>TB Skin Test</b>			
Signature of Provider						
<b>Other:</b>	/ /	/ /				
Signature of Provider						