

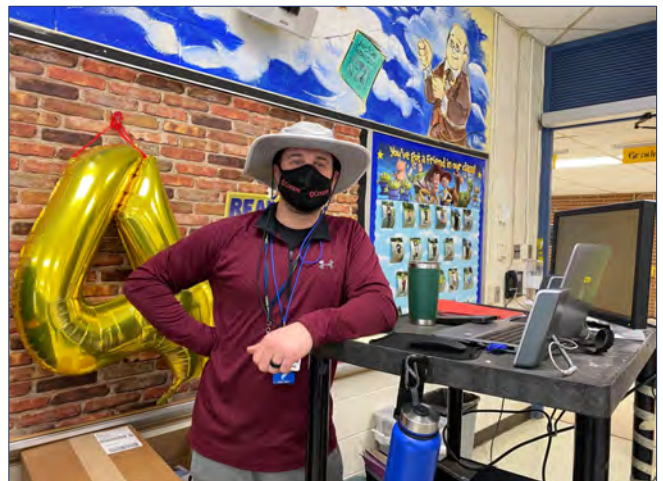


**COLLINGSWOOD AND OAKLYN PUBLIC SCHOOLS**



# Restarting and Reinventing Collingswood and Oaklyn Schools

Learning in the Time of COVID and Beyond



**August 2021**

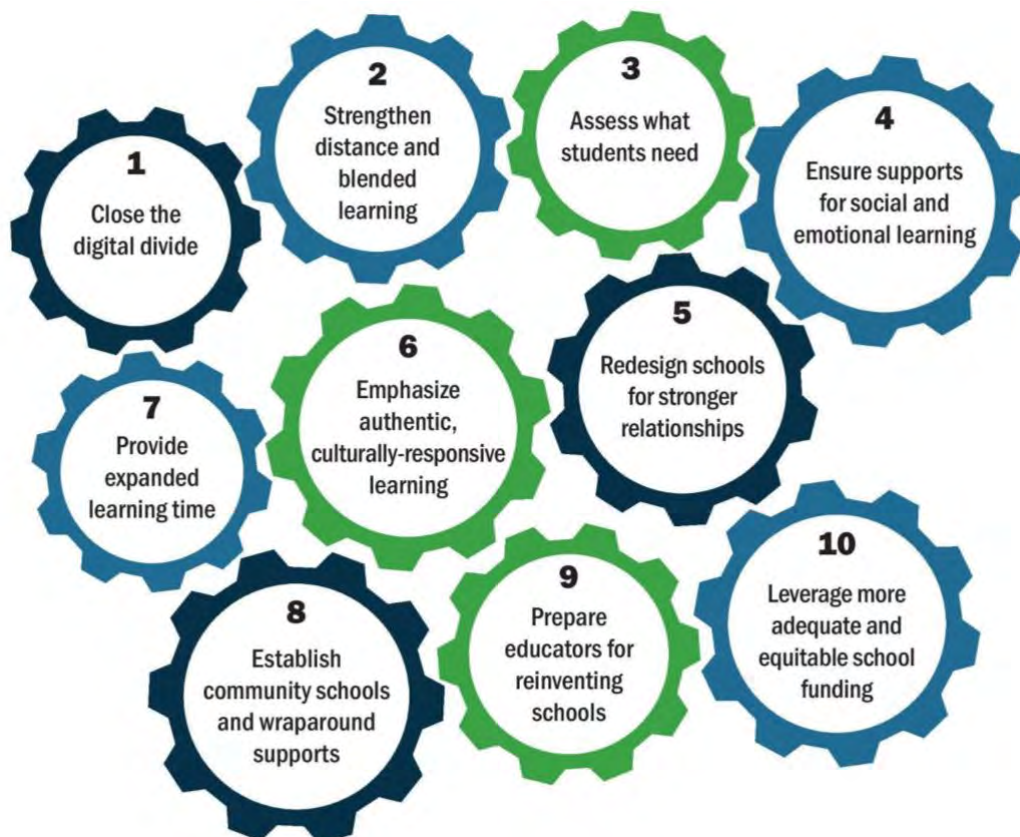
## Restarting & Reinventing Collingswood & Oaklyn Schools: Learning in the Time of COVID and Beyond

### Introduction

It has been more than a year since the first reported coronavirus case in New Jersey. At that time, school buses and classrooms were packed with students. Businesses, restaurants, and sporting venues were packed with patrons unaware that in short proximity, life as we knew it would be placed on pause. In the beginning, there were 159 cases nationwide. A year later, New Jersey has seen over 1 million confirmed cases. Such numbers don't take into account those who are still fighting significant respiratory and cardiac symptoms months after being infected, the children who suffer from multi-system inflammatory syndrome, the businesses that were permanently closed, or the mental health crisis that has emerged due to the social isolation of quarantine. In short, our state does not look the same as it did just over a year ago.

Despite this once in a generation disruption and setback, we have worked together as a community to take the appropriate data-informed steps to reduce community spread and transmission of the virus. Our community has made tremendous sacrifices to ensure that the needs of students and staff were prioritized and examples of caring for our neighbors has become the norm. We will use what we've learned this past year to safely return to full-time in-person instruction in September.

As a framework, the school district is leveraging research conducted by the [Learning Policy Institute](#). The evidence-based report titled, "Restarting and Reinventing Schools" lays out 10 priorities for schools that speak to a fundamental shift in academic, social, emotional, and community-based support. Our goal is to foster an equitable and effective teaching and learning environment utilizing evidence-based policies and practices that allow us to rethink the way in which school happens for students and educators. The framework highlights and focuses on how educators can support students regardless of the mechanism for instruction. The 10 priorities for schools are as follows:



### 1. Close the Digital Divide

Since the start of the pandemic, all students in grades preschool through grade 12 have had varying levels of access to a digital device. Access to digital devices at the earliest grades (K-1) is deemed appropriate and desirable. Further engagement and discussion are needed to reassess the need for future purchases of traditional instructional materials. (Textbooks, workbooks, and etc.)

### 2. Strengthen Distance and Blended Learning

As with educators across the country, Collingswood and Oaklyn were thrust into the world of remote learning and virtual education overnight. Throughout the spring, summer, and fall, the district sponsored training sessions for educators, including opportunities to have significant input into what has worked and what has not. The economic stimulus bill allowed for the purchase of tools that made virtual instruction more effective and manageable. The district also surveyed educators to determine what online resources were used and which produced the best results. Keeping educators up to speed on new technologies and virtual teaching strategies will remain a priority.

### 3. Assess what students need

Assessing what students need takes many forms. Currently, we have Multi-Tiered Systems of Supports (MTSS) available in each school. Collingswood designated Title I schools, have expanded levels of support for both academic and social emotional learning. After sampling several adaptive systems to assess student strengths and learning gaps, the district is finding the most success in grades 3-12 with ImagineMath and CommonLit. These digital tools provide feedback to teachers at many levels – from daily assessments to measurement against state-level benchmarks. The design of a MTSS framework is also taking place to support the efficiency and effectiveness of intervention efforts in the fall.

### 4. Ensure Supports for Social and Emotional Learning

Social-emotional learning (SEL) is an active part of the curriculum in Collingswood and Oaklyn. Pre-pandemic, increasing our impact in the area of SEL was established as a long-term goal. During the summer of 2019, we invested in training for over 60 educators in the area of trauma-informed practices while also investing in restorative practices training, another strategy grounded in social-emotional learning. Throughout the 2019-2020 school year, our educators participated in professional learning on trauma-informed practices with their peers in monthly sessions.

Educators who attended the summer training took the lead in customizing the modules created at the district level to the needs of their own schools. At the same time, the Collingswood taxpayers approved a ballot question to provide us with the necessary resources to pay for an expanded mental health initiative in our schools. Phase one of the plan included social-emotional learning (SEL) for all students in grades preschool – 5; a program that was developed collaboratively between Collingswood and Oaklyn counseling and teaching staff during the summer of 2020. A counseling coordinator was hired to help provide support to teachers and families and to coordinate services. Finally, a partnership with Jefferson Behavioral Health proved to be a great supplement to school-based services, breaking down many of the barriers that stand between young people and the care they and their families need. This partnership expanded to Oaklyn during the spring of 2021. In preparation for the 2021-22 school year, the SEL curriculum is being written at the secondary level, and updated at the elementary level with the next phase expanding to serve middle and high school students.

### 5. Redesign Schools for Stronger Relationships

In both Collingswood and Oaklyn, the topic of “relationships” has been at the forefront of our school initiatives for over a decade. Our opening day convocations each year are heavily steeped in relationships as the foundation needed to advance educational equity. Monthly messages to staff focus heavily on the need to build relationships. In school districts like Collingswood and Oaklyn, relationships between families and staff, particularly at the preschool and elementary level, are



often formed in person or through social media. Our outstanding educators routinely find time and take initiative to include relationship-building activities in their faculty meetings and professional learning experiences. The pandemic has brought out the best in our staff as they've jumped in to help each other while meeting the growing needs of students. Students recognize right away that the educators in our schools care about them deeply. We will build upon the solid foundation of strong relationships to grow restorative practices across the districts and provide real opportunities to re-establish critical connections while focusing on positive school culture.

#### **6. Emphasize Authentic, Culturally Responsive Learning**

Although this is an area where our teachers have built a solid foundation, additional time is needed to learn, grow, reflect, and change. The first phase of this important work began with the introduction of trauma-informed practices. Our educators understood trauma and were more than willing to increase their knowledge base, its impact on students, and the steps needed to support them. The second phase consisted of facilitating uncomfortable conversations about race in America and its impact on our local communities. Due to the complexities associated with equity and social justice, we have much work to do. Historically, our society has been reluctant to have difficult conversations about race, class, and privilege. As a school community, processes to support data-informed decision making that informs future investments to advance educational equity will be prioritized. To continue moving in the right direction, district leaders are collaborating with educators, families, and community leaders to identify strategies that lead to positive change.

#### **7. Provide Expanded Learning Time**

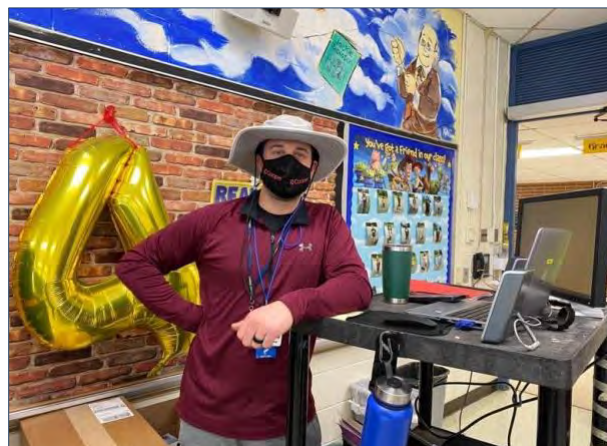
Expanded learning time (ELT) is an area where we have taken steps to make progress but requires continued work. In years past, Collingswood has offered a comprehensive science, technology, engineering, arts, and math programs in the summer (STEAM). There are, however, barriers to participation in these programs – cost, transportation, and scheduling. Through Title I, Sharp Elementary and Collingswood High School offer several programs that expand learning opportunities beyond the school day and the school year. Collingswood Middle School participated in an Arts in Education grant that also expanded learning time for some of our most underserved students. Due to the disruption brought on by the pandemic, expanded learning opportunities will need to look different. Schools will assess students in the Fall in order to identify the range of program offerings for the future. Much of this year's summer programming focused on providing opportunities for disengaged students to reconnect with schools while engaging in creative academic activities. When schools reopen, discussions will take place to identify appropriate afterschool programs to support students.

#### **8. Establish Community Schools and Wraparound Supports**

This is the area that needs further investment of time and resources. We have elements of community schools within our districts, but additional support is needed to form true community schools. We do have community outreach embedded within our preschool program – staff charged with helping families navigate the challenges of raising young children. Our mental health partnership is also an example of a school-community partnership that provides wrap-around services for students and families, in addition to expanded food service provided during the pandemic with eligibility that extends beyond those who qualify. Further exploration in this area requires funding and/or support from student-focused community organizations, many of which do not currently exist in Collingswood or Oaklyn. Nonetheless, tying together academic, health and social services, and youth and community partnerships will help to increase a student's sense of belonging in their community and has been shown to promote academic achievement.

#### **9. Prepare Educators for Reinventing School**

One of the fundamental goals as we entered and progressed through the pandemic has been to ensure that the Collingswood and Oaklyn Schools emerge from this crisis stronger than when we entered. One of the District's messages since the beginning has been, "In our rush to get back to normal, let's not forget the parts of normal not worth rushing back to." The importance of this message still holds true. Our educators have tackled these issues in various forums since the start of the pandemic. And we've put into place key programs, such as our social emotional learning program (SEL), upon which we can continue to build and strengthen once our students are back for full-time, in-person instruction.



The challenges will be maintaining focus on “getting to the next normal” once the students and staff who fared well under the “old normal” return to school. Several key questions have emerged. For which students has remote learning worked and why? How do we capitalize on a new appreciation for “school” that may appear when students return full-time? How do we choose which remote learning tools to keep as valuable for providing formative feedback to both students and teachers? And how do we ensure that our students are “ready to learn” once they return from what will be, for some, more than a year away from a physical classroom? These are questions that will need to be answered to deem the safe return to full-time in-person schooling a success. Key elements of these solutions are in place, but additional refinement will need to take place when students return in September.

#### 10. Leverage More Adequate and Equitable School Funding

Stimulus funds are being provided to address the areas most impacted by the disruption and closure of schools. Areas include support for the broader learning ecosystem, such as strategies to cultivate a growth mindset in students, professional learning for educators in the use of formative assessments, and the use of extended instructional time to effectively scaffold students’ learning, as well as integrate families and educators into a multi-tiered system of supports. The district will use available funds to support robust academic programming, staff development, and infrastructure. In addition, funds have also been made available to support building or enhancing a continuum of school-based mental health services for students, in coordination with existing county and local services, and support for educators. Funds are also being provided to address the impact of interrupted in-person instruction, and prepare for physical reopening to test, repair, and upgrade facilities to improve air quality in school buildings.

School-based funding in New Jersey is largely predictable and its funding formula, to the disdain of many, is one of the most progressive in the nation. The NJ Department of Education is getting closer and closer to “funding the formula,” and that has created “wins” for many districts and “losses” for others. Both Collingswood and Oaklyn have straddled the win-loss line for several years, some years taking a small hit while other years realizing small increases. In comparison to some of our neighboring districts, we have fared well. Moving forward, close attention will need to be paid to how the pandemic impacts state education aid. Furthermore, potential cost savings above and beyond those we’ve already established will need to be examined to offset increased operational expenses.

## The Road Forward



As announced in the New Jersey Department of Education (NJDOE)’s [April 28, 2021 broadcast](#), in March 2021 President Biden signed the Federal American Rescue Plan (ARP) Act into law. The ARP Act provides additional funding in Elementary and Secondary School Emergency Relief (ARP ESSER) to States and school districts to help safely reopen, sustain the safe operation of schools, and address the impacts of the COVID-19 pandemic on the nation’s students. As with the previous ESSER funds available under the Coronavirus Aid, Relief and Economic Security (CARES) Act, and the Coronavirus Response and Relief Supplemental Appropriations Act (CRRSA), the purpose of the additional funding is to support local educational agencies (LEAs) in preparing for and responding to the impacts of COVID-19 on educators, students, and families.

On May 17, 2021, Governor Murphy announced that upon the conclusion of the 2020-2021 school year, portions of [Executive Order 175](#) allowing remote learning would be rescinded, meaning that schools are required to provide full-day, in-person instruction, as they were prior to the COVID-19 Public Health Emergency. The NJDOE and New Jersey Department of Health

will share additional information regarding State requirements and guidance for health and safety protocols for the 2021-2022 school year as it becomes available.

## School Community Conversations



### How do we successfully restart and reinvent school in September?

There is overarching agreement that a majority of students benefit most from in-person learning, and the safe return to full-time, in-person instruction in September 2021 is our stated goal. To develop a robust reopening plan that reflects the diverse needs of our school communities, local educators engaged in a collaborative process to identify key strategies to support the safe return of students. Thank you to our outstanding school community for providing feedback through school site visits, focus groups, and direct interaction. Collingswood and Oaklyn have a rich history of site-based leadership and collaboration and this practice guided the next phase of discussion regarding the district goal to return to full-time in-person instruction in September.

School Community Conversations afforded each school an opportunity to engage in site-based discussions needed to answer the question, *“How do we successfully restart and reinvent school in September?”* The district provided formal guidance to school and district leaders in order to facilitate intensive discussions with all staff. Schools submitted recommendations that serve as the foundation for the district reopening plan. The facilitation guide was provided to assist in the flow of conversations that took place in schools while identifying and capturing sets of proposed solutions based on each site’s unique needs. The facilitation guide was divided up into (2) sections: **Health & Safety**, and **Teaching & Learning**.



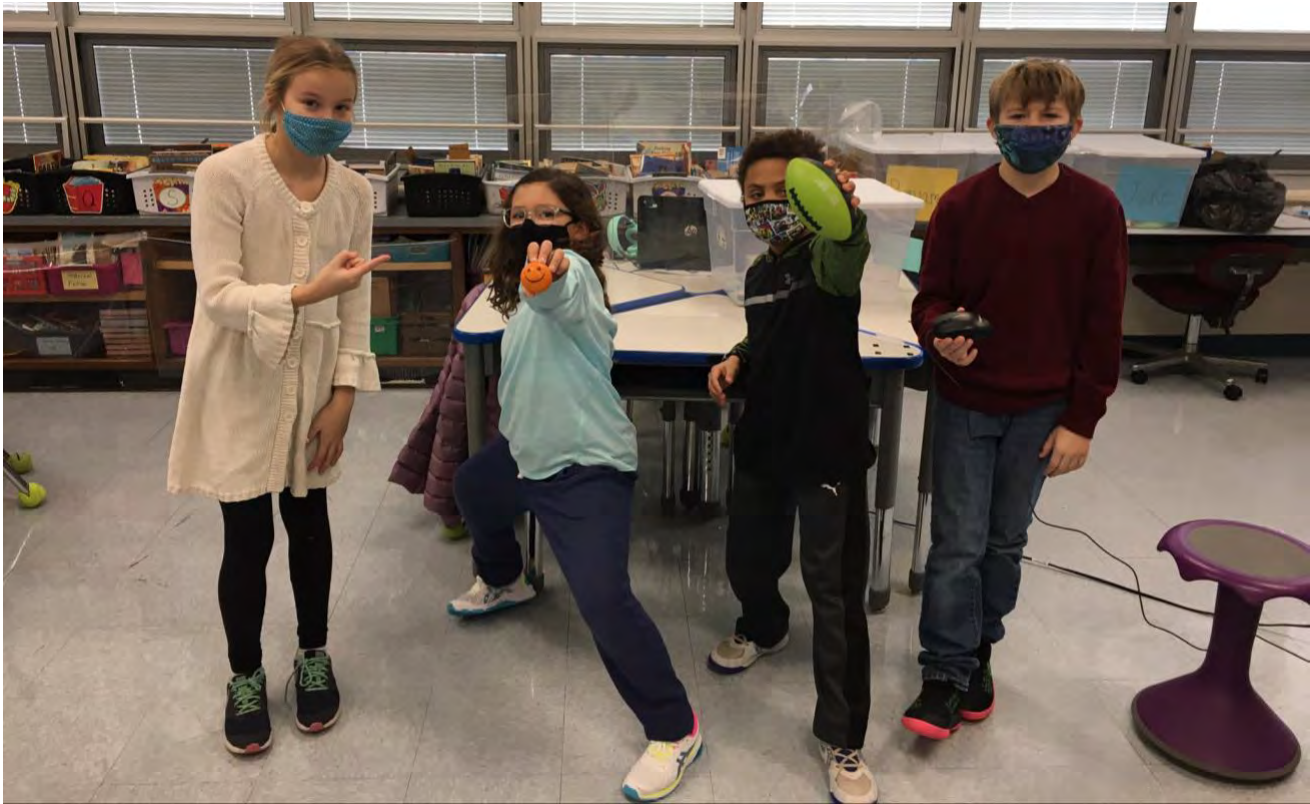
We have also enlisted the assistance of local residents and community members who have expertise in the fields of infectious disease, emergency medicine, pediatrics, public health, and mental health services. We understand the tremendous challenge the current situation presents for students and families. We remain committed to developing data-informed plans to address the evolving needs while adhering to federal and state public health guidance in a manner that honors the needs of our local school community. This detailed reopening plan is being released to our school community with a series of Community Information Sessions to follow shortly after.

## Health & Safety

School districts must plan to provide full-day, full-time, in-person instruction and operations for the 2021-2022 school year. The New Jersey Department of Education (NJDOE) and New Jersey Department of Health (NJDOH) worked collaboratively to develop guidance to operationalize that goal. [The Road Forward](#) guidance includes a range of strategies that school districts should consider implementing to reduce risks to students and staff from COVID-19 while still allowing for full-time, in-person learning.

Where possible, schools should develop a multi-layered approach to prevent the spread of COVID-19. The absence of one or more of the strategies outlined does not preclude the reopening of a school facility for full-time in-person operation. Schools should also anticipate potential updates to guidance prior to the start of the new school year, as additional federal recommendations are made available from the Centers for Disease Control and Prevention (CDC). Collingswood and Oaklyn

School Districts must also consider many factors as we prepare for the 2021-22 school year including the level of COVID-19 transmission in the [community at large](#) and within our [local school communities](#), as well as vaccination coverage rates in both the community at large and their school communities.



#### **Will students be required to wear masks in school?**

Yes. Per the latest guidance from the [Centers for Disease Control](#) (CDC) and the [American Academy of Pediatrics](#) (AAP), masks should be worn indoors by all individuals (age 2 and older) regardless of vaccination status. Consistent and correct mask use by people is especially important indoors and in crowded settings, when physical distancing cannot be maintained. Out of the abundance of caution, the district will continue to adhere to universal mask requirements when indoors. Students will not be required to wear masks during lunch sessions or during rest time in preschool.

All prevention strategies will be evaluated and adjustments will be made at the end of each trimester and/or marking period. The district continues to monitor trends in reported cases, including the recently reported increase in the spread of the of COVID-19 Delta variant among unvaccinated individuals. According to the [World Health Organization](#) (WHO), the Delta variant is more transmissible and is now the dominant coronavirus strain in NJ with cases increasing. The district will continue to use a layered approach to student safety. Families are strongly encouraged to consult with their health care provider for the best vaccine options for their family. Reasons for the universal mask requirement while indoors include(s):

- having a majority of the student population that is not yet eligible for vaccination (under age 12);
- lacking the ability to maintain physical distancing in most classrooms due to facilities limitations;
- increasing, substantial, or high COVID-19 transmission within schools or the surrounding community;
- increased community transmission of a variant that is spread more easily among children and adolescents or is resulting in more severe illness from COVID-19 among children and adolescents;
- lacking a system to monitor the vaccination status of students and/or staff;
- difficulty monitoring or enforcing mask policies that are not universal, and;
- responding to community input that many educators, families, or students have expressed concerns regarding in-person learning, if mask use was not universal.

**Will students need to wear masks outdoors?**

No. In general, students and staff do not need to wear masks outdoors. However, during times of high transmission, it is recommended that people who are not fully vaccinated wear a mask in crowded outdoor settings or during activities that involve sustained close contact with other people who are not fully vaccinated.

**Will appropriate accommodations for students with disabilities and/or medical concerns be available with respect to health and safety?**

Yes. Child Study Team Case Managers and Counselors will work with School Nurses to determine if students with or without disabilities are unable to wear a mask and identify acceptable alternatives. The same process will be followed for both groups to determine what additional accommodations are needed with respect to other health and safety policies.

**Will students need to socially distance in school?**

Yes. Whenever possible, elementary students will remain in cohorts throughout the school day with schedules established to reduce cohort mixing. Per current CDC guidance, it is recommended that all schools maintain at least 3 feet of physical distance between students within classrooms, combined with indoor masking by people who are not fully vaccinated, to reduce risk of transmission. Due to the space limitations of most school facilities, the district will continue to implement several layers of prevention including physical distancing to the greatest extent possible and universal and correct wearing of masks.

**Will lunch be served at schools?**

Yes. School cafeterias will be open to serve all students breakfast and lunch. Per additional funding from the [United States Department of Agriculture](#) (USDA), all students will have access to balanced and nutritious meals at no cost, regardless of eligibility status. The district is still required to have families complete breakfast-lunch applications. During mealtimes, when masks cannot be worn, schools will implement a layered prevention strategy to help mitigate the spread of COVID-19. These strategies include:

- maintaining physical distancing between students and staff, if possible;
- providing alternate dining areas such as eating in classrooms or outdoors;
- staggering eating times to allow for greater physical distancing;
- maintaining student cohorts and limiting mixing between groups, if possible;
- avoiding offering self-serve food options;
- discouraging students from sharing meals, and;
- encouraging routine cleaning between groups.

In an effort to add an additional level of protection for areas where students will be removing masks to eat lunch, bi-polar ionization air purifiers will be installed in cafeteria air handling units. Ionization produces a high concentration of positive and negative ions, delivering them into the space via the ventilation system. Within the air stream, ions attach to particles, where they kill mold, bacteria and viruses in the evaporator coil and throughout the breathing space. It also reduces allergens, smoke, odors, static electricity and dust particles. These units treat the air without creating ozone or other harmful byproducts and meet industry standards for no ozone admission.

**Will visitors be allowed in schools?**

Yes. To maintain the safety of students and staff, all visitors must have an appointment. If a visitor arrives at a school building without an appointment, or with an appointment and without a mask, entry into the school will be denied, (unless wearing a mask would inhibit the visitor's health, with verification required).





### **Will school playgrounds and outdoor spaces be available for use?**

Yes. School playgrounds and outdoor spaces are important resources that students will be able to utilize this year. Even though play and outdoor activities are a critical component of the educational process, students should maintain at least 6 feet of physical distance to reduce the risk of infection. Although infection by contact with contaminated surfaces is possible, current CDC guidance suggests that fomite (surface or objects) contact [is not the primary mode](#) of viral transmission and the risk is generally low.

### **What handwashing and respiratory etiquette protocols will be followed?**

Hand sanitizer machines have been installed in all elementary classrooms and in high-traffic common areas of each school. Hand sanitizer pumps will be available in all middle and high school classrooms for student and staff use. Hand washing stations are available in some elementary classrooms and all preschool classrooms. In elementary classrooms without

handwashing stations, teachers will schedule time for handwashing during the school day. In secondary classrooms, hand pump sanitizer will be placed in each room for students to use upon entry.

### **How will the district clean and maintain healthy facilities, including improving ventilation?**

The school district purchased COVID related materials with funding provided by the CARES Act. This includes personal protective equipment (PPE), cleaning products, MERV-13 air filters to trap particles, hydroxyl generators to disinfect possible contaminated areas, and bipolar ionization air purifiers in cafeterias. Throughout the school day custodial staff utilize electrostatic sprayers to clean high-touch areas and restrooms frequently throughout the day. All areas are thoroughly cleaned and disinfected on a nightly basis. The district is also adhering to industry standard HVAC. All HVAC equipment is monitored daily to ensure systems are operating as designed for building occupancy. Current recommendations of maintaining indoor humidity levels between 40-60% are met. High efficiency filters have been installed in all units, and the district has increased unit run times to increase the amount of fresh air being provided to all areas within the buildings.

### **How will contract tracing, isolation, and quarantine take place in schools?**

The district will work with the Camden County Department of Health (CCDOH) to establish updated protocols for communication, school community notification, and contact tracing. In partnership with Principals, School Nurses lead contact tracing efforts on campuses with continued guidance and technical assistance from the Camden County Department of Health, and State and Federal public health agencies.

### **Will there be symptom screening and testing in schools?**

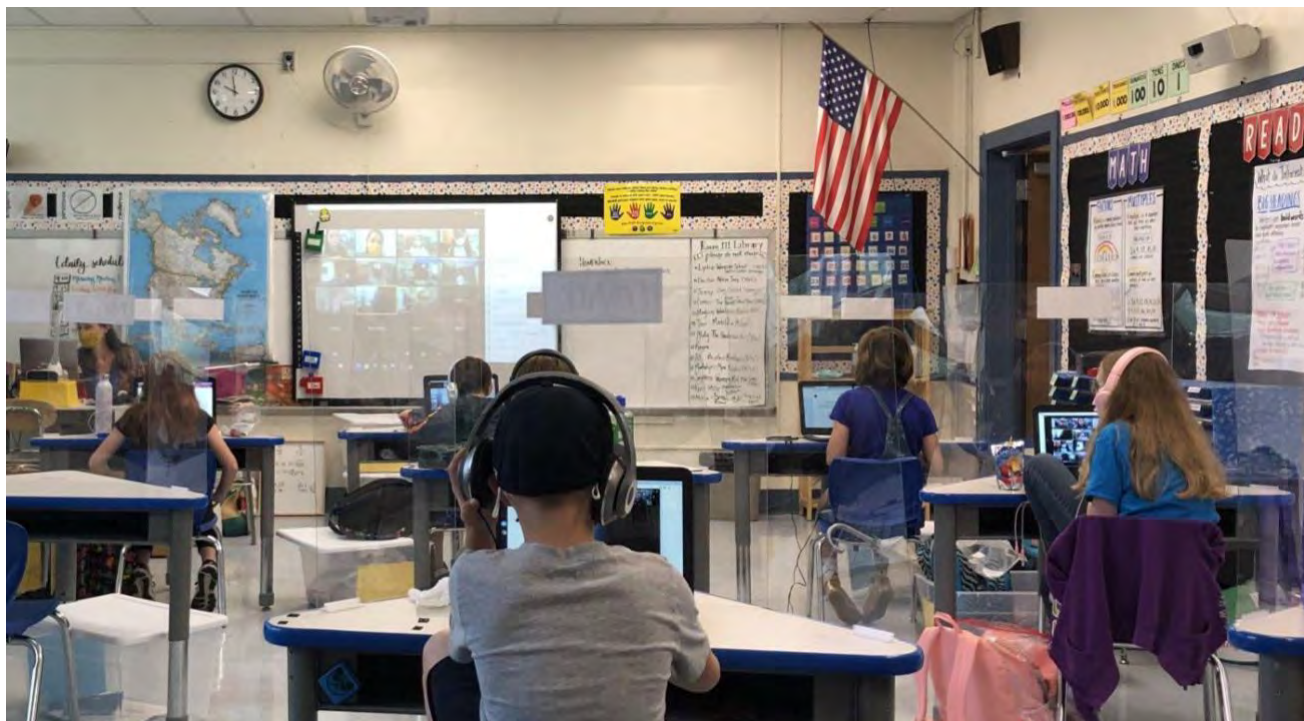
Yes. Families and caregivers are strongly encouraged to monitor their children for signs of illness every day. Students who are sick should not attend school. As the first line of defense, School Nurses will update the established self-check protocols for families and staff to implement at home prior to reporting to school. School Nurses will also use updated federal, state, and local public health guidance to create educational materials for families regarding signs of illness and the need to keep children home when sick. Principals will work with their teams to determine times and locations of entry to school buildings as well as a process for ensuring every staff member and student gets and passes a brief wellness check via a pre-established checklist to be updated prior to September. Nurses will train staff members charged with screenings.

The NJ Department of Health has outlined testing strategies as a part of a comprehensive prevention approach. Due to the current rate of transmission, universal screening is not recommended. Contingency testing plans will be established in the event of virus resurgence. To begin the new school year, schools will continue to isolate symptomatic students and staff. Symptomatic community members must return with a doctor's note or negative COVID test. Testing resources and guidance will be made available at each school. When a student or staff member reports a positive test result, the nurse will report the result to the Camden County Department of Health (CCDOH). Contact tracing and notification will be conducted according to guidelines established by the CCDOH.

### What efforts is the district taking to provide vaccinations to educators, other staff, and students?

Collingswood Public Schools partnered with Jefferson Health to provide educators and staff access to the COVID-19 vaccine in March and April. There has been continued emphasis on vaccination efforts for students and staff through weekly newsletters and special notices sent using the community messaging system. Collingswood Middle and High School students were surveyed in June and data indicates that almost 70% of eligible students anticipate being vaccinated by September 2021. The school district is also in active partnership with the Collingswood Borough COVID-19 Recovery Committee and the Camden County Department of Health to host a pop-up vaccine clinic at the high school campus cafeteria for all Collingswood, Oaklyn, and Woodlynne residents age 12 and older in July and August 2021. There will be continued emphasis and advocacy for vaccination as vaccines become available for residents under age 12.

## Teaching & Learning



### How will the district ensure continuity of services, including services to address students' academic needs and students' and staffs' social, emotional, mental health, and other needs?

The Collingswood and Oaklyn School Districts take pride in understanding the individual needs of our students alongside the goals and expectations of the [New Jersey Student Learning Standards](#) (NJSLs). Our districts believe that teaching to the “whole child” means understanding that the assessment of daily learning goals holds great value in promoting student growth and achievement. Across our districts, we incorporate a number of assessment practices to guide our students and inform our instruction. As we promote the New Jersey Department of Education’s aspirations toward The Road Forward, we will begin this school year by focusing attention on the social-emotional wellness of our students, as well as their specific content learning needs.

The principals, and as applicable, Child Study Team (CST), will work with district staff to determine what accommodations can be made to return medically fragile students to the district. For students receiving special education services, CST Case Managers and Teachers will review academic data and other IEP goals to determine what services are required to address any regression. The CST will continue evaluation processes in a collaborative manner, working closely with team members, families, and students.

For preschool, the [GOLD Assessment System](#) is designed to allow our staff to understand how students are meeting preschool standards, goals, and objectives. Through the assessment of daily learning milestones, we are able to determine where our students are meeting developmentally appropriate goals and provide support for areas of growth.

Our elementary schools regularly assess student understanding of concepts aligned to state standards through indicators of understanding, which are embedded in our curriculum. Our educators use a range of specific programs and assessment tools to determine student growth and progress and to assist students in determining their individual learning goals. In the area of mathematics, we incorporate such programs as [GO! Math](#) and [Imagine Learning](#) for standards-based and performance-based assessment in math.

In the area of literacy, educators use performance-based assessments and learning progressions to promote daily learning experiences, as well as specific programs such as [Foundations](#), [Fountas & Pinnell](#), and [The Teachers College Reading and Writing Project](#) Units of Study. During science and social studies, our educators continue to promote a standards-based approach with regular ongoing assessment of key concepts and understandings. Through the use of programs like [Mystery Science](#) and regular discussions surrounding current events and historically significant concepts, we are able to gain an understanding of students' development as scientific thinkers and global citizens.

Collingswood Middle and High School educators remain committed to promoting student achievement through the implementation of a robust curriculum across all content areas. Students will be offered unique learning experiences related to New Jersey Student Learning Standards coupled with elective courses to promote positive outcomes related to career readiness, life literacies, and key 21<sup>st</sup> century skills. Educators will collaborate with students to assess their understanding of concepts and guide their ambitions for the future through daily progress monitoring and a variety of benchmarks throughout marking periods.

New Jersey Department of Education has made available the [Start Strong Assessment](#) in grades 4-10 (English/Language Arts); Mathematics (Grades 4-8), Algebra I, Geometry, and Algebra II; and Science (Grades 6, 9, and 12). These assessments are available to assist districts as they prepare for the return of the [New Jersey Student Learning Assessments](#) (NJSLA) in the spring of 2022.

To support our focus on college and career readiness, the district will be participating in the [CollegeBoard SAT School Day](#) for grades 8-12 this year. SAT School Day provides schools and districts a way to offer the PSAT and SAT to students in school, on a weekday, expanding access to a globally recognized college admission test that's widely accepted at U.S. colleges. By breaking down barriers to access, this recommendation can have a profound impact on the school community—opening doors to college, scholarships, and financial aid for every student. It also supports equity as students have the opportunity to test at their own school, thus cultivating a college-going culture. This recommendation also provides tangible data which will inform the program of study annually. As we seek to get to the next normal, every student at Collingswood Middle and High School will be supported as critical thinkers, problem solvers, and communicators while preparing for the exciting demands of the future.

**Will remote instruction be an option for families this year?**

No. School districts must plan to provide full-day, full-time, in-person instruction and operations for the 2021-2022 school year. Pursuant to [NJ State Law](#), schools must be in session for 180 days to receive state aid. The statute requires that school facilities be provided for at least 180 days during the school year. In the event the district is required to close the schools for more than three consecutive school days due to a declared state of emergency, declared public health emergency, or a directive and/or recommendation by the appropriate health agency or officer to institute a public health-related closure, days of virtual or remote instruction commensurate with in-person instruction (four-hours) will count towards the district's 180-day requirement.

**Will the district return to remote or hybrid instruction if a surge in transmission rates affects the whole class, school community, region, or state?**

Yes. The school district may be required to close the schools for more than three consecutive school days due to a declared state of emergency, declared public health emergency, or a directive and/or recommendation by the appropriate health agency or officer to institute a public health-related closure. If confronted with the incidence of an outbreak of positive COVID-19 cases amongst staff and/or students and the district is required to exclude a student, group of students, a class, or multiple classes as a result of the scenarios listed above, the district will be prepared to offer virtual or remote instruction to students in a manner commensurate with in-person instruction to the extent possible (four-hours).

**What formal guidance, professional learning, or technical assistance will be provided to schools?**

Professional learning will focus on Trauma-Informed Practices, Restorative Approaches to Learning, Social-Emotional Learning (SEL), Advancing Educational Equity, Reading Workshop Model of Instruction, Visible Learning, CommonLit, Imagine Math, Word Study, Professional Learning Community (PLC) development, and instructional planning through the use of the Connected Action Roadmap (CAR).

## Community Information Sessions



Every school will host a Reopening Community Information Session. This provides an opportunity to present the district reopening plan, provide valuable school specific updates, and prepare families for the new school year. Topics presented by school and district staff members will focus on **Health & Safety** and **Teaching & Learning**. All sessions will take place from August 9 – August 23 at the Collingswood Middle School Auditorium. The auditorium was selected to allow families to attend in person and properly socially distance per the latest public health guidance.

Date	Time	Campus/Location	School Community
Monday, August 9	6:30	CMS Auditorium	Tatem Elementary
Tuesday, August 10	6:30	CMS Auditorium	Garfield Elementary
Wednesday, August 11	5:30	CMS Auditorium	Preschool Penguins
Thursday, August 12	6:30	CMS Auditorium	Newbie Elementary
Monday, August 16	6:30	CMS Auditorium	Collingswood Middle School
Tuesday, August 17	6:30	CMS Auditorium	Oaklyn School
Wednesday, August 18	6:30	CMS Auditorium	Zane North Elementary
Thursday, August 19	5:30	CMS Auditorium	Sharp Elementary
Monday, August 23	6:00	CMS Auditorium	Collingswood High School

# PRESCHOOL PROGRAM



**Location(s):** Collingswood Early Childhood Center, 201 Dayton Avenue, Collingswood, NJ 08108  
 Collingswood Preschool at Oaklyn School, 136 Kendall Boulevard, Oaklyn, NJ 08107

**Program Staff:**

Jennifer Johnson-Floyd, Instructional Supervisor  
 Early Childhood Education (PS-3)  
 Email: [jfloyd@collsk12.org](mailto:jfloyd@collsk12.org)  
 Phone: (856) 833-5291

Jessica Benatti, Program Secretary (CEEC)  
 Email: [jbenatti@collsk12.org](mailto:jbenatti@collsk12.org)  
 Phone: (856) 833-5291 x. 101

Harrum Bataloni, School Nurse (CEEC)  
 Email: [hbataloni@collsk12.org](mailto:hbataloni@collsk12.org)  
 Phone: (856) 833-5291 x. 107

Lisa Pendarvis, Program Secretary (Colls PS @ Oaklyn)  
 Email: [lpendarvis@collsk12.org](mailto:lpendarvis@collsk12.org)  
 Phone: (856) 858.0335

Health & Safety	Teaching & Learning
<ul style="list-style-type: none"> <li>● Masks Required:                             <ul style="list-style-type: none"> <li>○ Indoors (Yes)</li> <li>○ Outdoors (Optional)</li> </ul> </li> <li>● Masks Not Required:                             <ul style="list-style-type: none"> <li>○ Meal Time</li> <li>○ Rest Time</li> <li>○ Outdoor Gross Motor Skills</li> </ul> </li> <li>● Sanitizing:                             <ul style="list-style-type: none"> <li>○ Hand washing stations in all classrooms</li> <li>○ Hand sanitizer pumps in high traffic areas</li> </ul> </li> <li>● Vaccination:                             <ul style="list-style-type: none"> <li>○ Students under age 12 are not eligible at this time</li> </ul> </li> <li>● Visitors:                             <ul style="list-style-type: none"> <li>○ By Appointment Only</li> <li>○ Masks Required</li> </ul> </li> <li>● Lunch Served: Yes                             <ul style="list-style-type: none"> <li>○ Duration (30 mins)</li> <li>○ Served in classrooms</li> </ul> </li> <li>● Playground Use: Yes                             <ul style="list-style-type: none"> <li>○ Physical distancing of 6 feet.</li> <li>○ Hands sanitized before/after recess</li> </ul> </li> <li>● Updated Signage: Yes</li> </ul>	<ul style="list-style-type: none"> <li>● Preschool Hours: 9:00am – 3:00pm                             <ul style="list-style-type: none"> <li>○ Arrival: 8:45am – 9:00am</li> <li>○ Dismissal: 2:45pm – 3:00pm</li> </ul> </li> <li>● Classroom Adjustments: Yes                             <ul style="list-style-type: none"> <li>○ Students arranged head-to-toe during daily rest time</li> <li>○ Students will be organized into cohorts per NJDOE guidelines</li> <li>○ Cohorts will be used for district parent involvement initiatives and in the event of necessary considerations regarding virus transmission.</li> </ul> </li> <li>● Mental Health Supports: Yes</li> <li>● Curriculum &amp; Instruction:                             <ul style="list-style-type: none"> <li>○ <a href="#">The Creative Curriculum, Gold Assessment</a>, Large and Small Group Sessions</li> </ul> </li> <li>● Classroom Tools:                             <ul style="list-style-type: none"> <li>○ Daily Interest-Area Centers (blocks, dramatic play, toys and games, art, library, discovery, sand and water, music and movement, cooking, technology, and the outdoors)</li> <li>○ Daily Read Aloud Sessions</li> <li>○ Daily Gross Motor Skills Activities (indoors and outdoors, weather permitting)</li> </ul> </li> <li>● Technology Resources:                             <ul style="list-style-type: none"> <li>○ <a href="#">Google Classroom</a>, <a href="#">Class Dojo</a>, <a href="#">Epic</a> (Digital Library for Kids)</li> </ul> </li> <li>● Special Programs                             <ul style="list-style-type: none"> <li>○ <a href="#">Just Kids (Before &amp; After Care)</a></li> </ul> </li> </ul>

## GARFIELD ELEMENTARY SCHOOL



**Location:** Garfield Elementary School, 480 Haddon Avenue, Collingswood, NJ 08108

**Program Staff:**

Mark Wiltsey, Principal  
 Email: [mwiltsey@collsk12.org](mailto:mwiltsey@collsk12.org)  
 Phone: (856) 962-5705

Kathy Mauger, School Secretary  
 Email: [kmauger@collsk12.org](mailto:kmauger@collsk12.org)  
 Phone: (856) 962-5705 x. 4105

Joanne Rongione, School Nurse  
 Email: [jrongione@collsk12.org](mailto:jrongione@collsk12.org)  
 Phone: (856) 962-5705 x. 4005

Health & Safety	Teaching & Learning
<ul style="list-style-type: none"> <li>● Masks Required:                             <ul style="list-style-type: none"> <li>○ Indoors (Yes)</li> <li>○ Outdoors (Optional)</li> </ul> </li> <li>● Sanitizing:                             <ul style="list-style-type: none"> <li>○ Hand washing stations in all classrooms</li> <li>○ Hand sanitizer pumps in high traffic areas</li> </ul> </li> <li>● Vaccination:                             <ul style="list-style-type: none"> <li>○ Students under age 12 are not eligible at this time</li> </ul> </li> <li>● Visitors:                             <ul style="list-style-type: none"> <li>○ By Appointment Only (Masks Required)</li> </ul> </li> <li>● Lunch Served: Yes                             <ul style="list-style-type: none"> <li>○ Grades 3-5: 11:00am - 12:00pm</li> <li>○ Grades K-2: 12:00pm - 1:00pm</li> <li>○ Lunch and Recess (20 min rotations)</li> <li>○ Lunch: 20 mins</li> <li>○ Recess: 40 mins</li> </ul> </li> <li>● Playground Use: Yes                             <ul style="list-style-type: none"> <li>○ Physical distancing of 6 feet.</li> <li>○ Hands sanitized before/after recess</li> </ul> </li> <li>● Updated Signage: Yes</li> </ul>	<ul style="list-style-type: none"> <li>● School Hours: 8:30am – 3:00pm                             <ul style="list-style-type: none"> <li>○ Arrival: 8:15am – 8:30am</li> <li>○ Dismissal: 3:00pm</li> </ul> </li> <li>● Classroom Adjustments:                             <ul style="list-style-type: none"> <li>○ Setup will follow CDC guidelines</li> <li>○ Storage bins/closets/ instructional materials</li> <li>○ September will be used to assess student needs</li> </ul> </li> <li>● Mental Health Supports: Yes                             <ul style="list-style-type: none"> <li>○ Social Emotional Learning</li> <li>○ Trauma-informed Staff Training</li> <li>○ Jefferson Health Partnership</li> </ul> </li> <li>● Curriculum &amp; Instruction:                             <ul style="list-style-type: none"> <li>○ <a href="#">Readers and Writers Workshop</a>, <a href="#">Go! Math</a>, <a href="#">Foundations</a>, <a href="#">Mystery Science</a></li> </ul> </li> <li>● Technology Resources:                             <ul style="list-style-type: none"> <li>○ <a href="#">Google Classroom</a>, <a href="#">Class Dojo</a>, <a href="#">Seesaw</a>, <a href="#">Imagine Math</a>, <a href="#">Common Lit</a>, Chromebooks, Document Cameras, ENO Interactive Whiteboards</li> </ul> </li> <li>● Special Programs:                             <ul style="list-style-type: none"> <li>○ Mighty Girls Club, Informational Technology Club, Kindness Club, English Language Learners, PTA-sponsored field trips, assemblies, and fundraisers</li> </ul> </li> </ul>

## NEWBIE ELEMENTARY SCHOOL



**Location:** Newbie Elementary School, 2 East Browning Road, Collingswood, NJ 08108

**Program Staff:**

Steven Smith, Principal  
 Email: [ssmith@collsk12.org](mailto:ssmith@collsk12.org)  
 Phone: 856-962-5706, extension 4

Patricia Radwanski, School Secretary  
 Email: [pradwanski@collsk12.org](mailto:pradwanski@collsk12.org)  
 Phone: 856-962-5706, extension 4

Allison Howley, School Nurse  
 Email: [ahowley@collsk12.org](mailto:ahowley@collsk12.org)  
 Phone: 856-962-5706, extension 2

Health & Safety	Teaching & Learning
<ul style="list-style-type: none"> <li>● Masks Required:                             <ul style="list-style-type: none"> <li>○ Indoors (Yes)</li> <li>○ Outdoors (Optional)</li> </ul> </li> <li>● Sanitizing:                             <ul style="list-style-type: none"> <li>○ Hand washing stations in all classrooms</li> <li>○ Hand sanitizer pumps in high traffic areas</li> </ul> </li> <li>● Vaccination:                             <ul style="list-style-type: none"> <li>○ Students under age 12 are not eligible at this time</li> </ul> </li> <li>● Visitors:                             <ul style="list-style-type: none"> <li>○ By Appointment Only (Masks Required)</li> </ul> </li> <li>● Lunch Served: Yes                             <ul style="list-style-type: none"> <li>○ Lunch Period A: 11:10am - 11:30am</li> <li>○ Lunch Period B: 11:40am - 12:00pm</li> <li>○ Lunch Period C: 12:10pm - 12:30pm                                     <ul style="list-style-type: none"> <li>■ Lunch and Recess (20 min rotations)   <ul style="list-style-type: none"> <li>■ Lunch: 20 mins</li> <li>■ Recess: 40 mins</li> </ul> </li> </ul> </li> <li>○ 10-min Cleaning Period between lunch groups.</li> </ul> </li> <li>● Playground Use: Yes                             <ul style="list-style-type: none"> <li>○ Physical distancing of 6 feet.</li> <li>○ Hands sanitized before/after recess</li> </ul> </li> <li>● Updated Signage: Yes</li> </ul>	<ul style="list-style-type: none"> <li>● School Hours: 8:30am – 3:00pm                             <ul style="list-style-type: none"> <li>○ Arrival: 8:15am – 8:30am</li> <li>○ Dismissal: 3:00pm</li> </ul> </li> <li>● Classroom Adjustments:                             <ul style="list-style-type: none"> <li>○ Setup will follow CDC guidelines</li> <li>○ Storage bins/closets/ instructional materials</li> <li>○ September will be used to assess student needs</li> </ul> </li> <li>● Mental Health Supports: Yes                             <ul style="list-style-type: none"> <li>○ Social Emotional Learning</li> <li>○ Trauma-informed Staff Training</li> <li>○ Jefferson Health Partnership</li> </ul> </li> <li>● Curriculum &amp; Instruction:                             <ul style="list-style-type: none"> <li>○ <a href="#">Readers and Writers Workshop</a>, <a href="#">Go! Math</a>, <a href="#">Foundations</a>, <a href="#">Mystery Science</a></li> </ul> </li> <li>● Classroom Tools:                             <ul style="list-style-type: none"> <li>○ Kinesthetic Classroom designs, Manipulatives, Visuals</li> </ul> </li> <li>● Technology Resources:                             <ul style="list-style-type: none"> <li>○ <a href="#">Google Classroom</a>, <a href="#">Class Dojo</a>, <a href="#">Seesaw</a>, <a href="#">Imagine Math</a>, <a href="#">Common Lit</a>, Chromebooks, Document Cameras, ENO Interactive Whiteboards, Classroom Audio Systems</li> </ul> </li> <li>● Special Programs:                             <ul style="list-style-type: none"> <li>○ Newbie FIRE Recognition Program, <a href="#">Dunk Your Kicks</a>, <a href="#">Novel Effect</a>, Instrumental Music, Physical Education, Technology, Art, World Language (Spanish), and PTA family events</li> </ul> </li> </ul>

# SHARP ELEMENTARY SCHOOL



**Location:** Thomas Sharp Elementary School, 400 Comly Avenue, Collingswood, NJ 08107

**Program Staff:**

Doug Newman, Principal  
 Email: [dnewman@collsk12.org](mailto:dnewman@collsk12.org)  
 Phone: (856) 962-5707 x 2104

Karen Kowasa, School Secretary  
 Email: [kkowasa@collsk12.org](mailto:kkowasa@collsk12.org)  
 Phone: (856) 962- 5707 x2104

Stephanie Tracey, School Nurse  
 Email: [stracy@collsk12.org](mailto:stracy@collsk12.org)  
 Phone: (856) 962-5707 x 2109

Thomas Sharp PTA Board Members: Julie Schneider, Amy Kueny, Lindsay Oster, Dan Vernau  
 Email: [thomasharppta@gmail.com](mailto:thomasharppta@gmail.com)

Health & Safety	Teaching & Learning
<ul style="list-style-type: none"> <li>● Masks Required:                             <ul style="list-style-type: none"> <li>○ Indoors (Yes)</li> <li>○ Outdoors (Optional)</li> </ul> </li> <li>● Sanitizing:                             <ul style="list-style-type: none"> <li>○ Hand washing stations in all classrooms</li> <li>○ Hand sanitizer pumps in high traffic areas</li> </ul> </li> <li>● Vaccination:                             <ul style="list-style-type: none"> <li>○ Students under age 12 are not eligible at this time</li> </ul> </li> <li>● Visitors:                             <ul style="list-style-type: none"> <li>○ By Appointment Only (Masks Required)</li> </ul> </li> <li>● Lunch Served: Yes                             <ul style="list-style-type: none"> <li>○ Grades K-3: 11:30am – 12:00pm</li> <li>○ Grades 4-5: 12:00pm – 12:30pm</li> <li>○ Locations: All Purpose Room, Classrooms, Outdoors</li> </ul> </li> <li>● Playground Use: Yes                             <ul style="list-style-type: none"> <li>○ Physical distancing of 6 feet.</li> <li>○ Hands sanitized before/after recess</li> </ul> </li> <li>● Updated Signage: Yes</li> </ul>	<ul style="list-style-type: none"> <li>● School Hours: 8:30am – 3:00pm                             <ul style="list-style-type: none"> <li>○ Arrival: 8:15am – 8:30am</li> <li>○ Dismissal: 3:00pm</li> </ul> </li> <li>● Classroom Adjustments:                             <ul style="list-style-type: none"> <li>○ Setup will follow CDC guidelines</li> <li>○ Storage bins/closets/ instructional materials</li> <li>○ September will be used to assess student needs</li> </ul> </li> <li>● Mental Health Supports: Yes                             <ul style="list-style-type: none"> <li>○ Social Emotional Learning</li> <li>○ Trauma-informed Staff Training</li> <li>○ Jefferson Health Partnership</li> </ul> </li> <li>● Curriculum &amp; Instruction:                             <ul style="list-style-type: none"> <li>○ <a href="#">Readers and Writers Workshop</a></li> <li>○ <a href="#">Go! Math, Foundations, Mystery Science</a></li> </ul> </li> <li>● Classroom Tools:                             <ul style="list-style-type: none"> <li>○ Book Pouches, Reading Manipulatives (K-3); Classroom Libraries; Math Manipulatives; Flexible Seating; Occupational Therapy Manipulatives (K-5)</li> </ul> </li> <li>● Technology Resources:                             <ul style="list-style-type: none"> <li>○ <a href="#">Google Classroom</a>, <a href="#">Class Dojo</a>, <a href="#">Seesaw</a>, <a href="#">Imagine Math</a>, <a href="#">Common Lit</a>, Chromebooks, Document Cameras</li> </ul> </li> <li>● Special Programs:                             <ul style="list-style-type: none"> <li>○ <a href="#">Restorative Practices</a>, Outdoor Learning Spaces, Feel Good Fridays, Visible Learning, Responsive Learning, <a href="#">Just Kids (Before &amp; After Care)</a></li> </ul> </li> </ul>



## TATEM ELEMENTARY SCHOOL



**Location:** William P. Tatem Elementary School, 265 Lincoln Avenue, Collingswood, NJ 08108

**Program Staff:**

Brian Kulak, Principal  
 Email: [bkulak@collsk12.org](mailto:bkulak@collsk12.org)  
 Phone: (856) 962 5704 x3118

Cecilia Taglang, School Secretary  
 Email: [ctaglang@collsk12.org](mailto:ctaglang@collsk12.org)  
 Phone: (856) 962 5704 x3110

Hillary Roof, School Nurse  
 Email: [hroof@collsk12.org](mailto:hroof@collsk12.org)  
 Phone: (856) 962 5704 x3124

Health & Safety	Teaching & Learning
<ul style="list-style-type: none"> <li>● Masks Required:                             <ul style="list-style-type: none"> <li>○ Indoors (Yes)</li> <li>○ Outdoors (Optional)</li> </ul> </li> <li>● Sanitizing:                             <ul style="list-style-type: none"> <li>○ Hand washing stations in all classrooms</li> <li>○ Hand sanitizer pumps in high traffic areas</li> </ul> </li> <li>● Vaccination:                             <ul style="list-style-type: none"> <li>○ Students under age 12 are not eligible at this time</li> </ul> </li> <li>● Visitors:                             <ul style="list-style-type: none"> <li>○ By Appointment Only (Masks Required)</li> </ul> </li> <li>● Lunch Served: Yes</li> <li>● Lunch Schedule (Tentative)                             <ul style="list-style-type: none"> <li>○ Grades K-1: 11:10 - 11:30am Recess A; 11:30 - 11:50am Lunch; 11:50am - 12:10pm Recess B</li> <li>○ Grades 2-3: 11:40am -12:00pm Recess A; 12:00 - 12:20pm Lunch; 12:20 - 12:40pm Recess B</li> <li>○ Grades 4-5: 12:10 - 12:30pm Recess A; 12:30 - 12:50pm Lunch; 12:50 - 1:10pm Recess B</li> </ul> </li> <li>● Playground Use: Yes                             <ul style="list-style-type: none"> <li>○ Physical distancing of 6 feet.</li> <li>○ Hands sanitized before/after recess</li> </ul> </li> <li>● Updated Signage: Yes</li> </ul>	<ul style="list-style-type: none"> <li>● School Hours: 8:30am – 3:00pm                             <ul style="list-style-type: none"> <li>○ Arrival: 8:15am – 8:30am</li> <li>○ Dismissal: 3:00pm; Kindergarten 2:55pm</li> </ul> </li> <li>● Classroom Adjustments:                             <ul style="list-style-type: none"> <li>○ Setup will follow CDC guidelines</li> <li>○ Storage bins/closets/ instructional materials</li> <li>○ September will be used to assess student needs and social emotional supports</li> </ul> </li> <li>● Mental Health Supports: Yes                             <ul style="list-style-type: none"> <li>○ Social Emotional Learning</li> <li>○ Trauma-informed Staff Training</li> <li>○ Jefferson Health Partnership</li> </ul> </li> <li>● Curriculum &amp; Instruction:                             <ul style="list-style-type: none"> <li>○ <a href="#">Readers and Writers Workshop</a>, Mindfulness, <a href="#">Go! Math</a>, <a href="#">Foundations</a>, <a href="#">Mystery Science</a></li> </ul> </li> <li>● Classroom Tools:                             <ul style="list-style-type: none"> <li>○ Book Pouches, Reading Manipulatives (K-3); Classroom Libraries; Math Manipulatives; Flexible Seating; Occupational Therapy Manipulatives (K-1)</li> </ul> </li> <li>● Technology Resources:                             <ul style="list-style-type: none"> <li>○ <a href="#">Google Classroom</a>, <a href="#">Class Dojo</a>, <a href="#">Seesaw</a>, <a href="#">Imagine Math</a>, <a href="#">Common Lit</a>, <a href="#">Class Kick</a>, <a href="#">Prodigy</a>, Google Suite for Education, Chromebooks</li> </ul> </li> <li>● Special Programs:                             <ul style="list-style-type: none"> <li>○ <a href="#">Restorative Practices</a>, Outdoor Learning Spaces, <a href="#">NaNoWriMo</a>, Feel Good Fridays, Book Nooks, Visible Learning, <a href="#">Just Kids (Before &amp; After Care)</a>,</li> </ul> </li> </ul>

# ZANE NORTH ELEMENTARY SCHOOL



**Location:** Zane North Elementary School, 801 Stokes Ave, Collingswood, NJ 08108

**Program Staff:**

Thomas Santo, Principal  
 Email: [tsanto@collsk12.org](mailto:tsanto@collsk12.org)  
 Phone: 856.962.5703 x 1102

June Kasilowski, School Secretary  
 Email: [jkasilowski@collsk12.org](mailto:jkasilowski@collsk12.org)  
 Phone: 856.962.5703

Patricia Butler, School Nurse  
 Email: [pbutler@collsk12.org](mailto:pbutler@collsk12.org)  
 Phone: 856.962.5703 x 1117

Health & Safety	Teaching & Learning
<ul style="list-style-type: none"> <li>● Masks Required:                             <ul style="list-style-type: none"> <li>○ Indoors (Yes)</li> <li>○ Outdoors (Optional)</li> </ul> </li> <li>● Sanitizing:                             <ul style="list-style-type: none"> <li>○ Hand washing stations in all classrooms</li> <li>○ Hand sanitizer pumps in high traffic areas</li> </ul> </li> <li>● Vaccination:                             <ul style="list-style-type: none"> <li>○ Students under age 12 are not eligible at this time</li> </ul> </li> <li>● Visitors:                             <ul style="list-style-type: none"> <li>○ By Appointment Only (Masks Required)</li> </ul> </li> <li>● Lunch Served: Yes</li> <li>● Lunch Schedule                             <ul style="list-style-type: none"> <li>○ Lunch 1: 11:30am - 12:00pm</li> <li>○ Lunch 2: 12:00 – 12:30pm</li> <li>○ Locations: All Purpose Room, Classrooms, Outdoors</li> </ul> </li> <li>● Playground Use: Yes                             <ul style="list-style-type: none"> <li>○ Physical distancing of 6 feet.</li> <li>○ Hands sanitized before/after recess</li> </ul> </li> <li>● Updated Signage: Yes</li> </ul>	<ul style="list-style-type: none"> <li>● School Hours: 8:30am – 3:00pm                             <ul style="list-style-type: none"> <li>○ Arrival: 8:15am – 8:30am</li> <li>○ Dismissal: 3:00pm; Kindergarten 2:55pm</li> </ul> </li> <li>● Classroom Adjustments:                             <ul style="list-style-type: none"> <li>○ Setup will follow CDC guidelines</li> <li>○ Storage bins/closets/ instructional materials</li> <li>○ Living Learning Landscape (Instructional/Recreational)</li> <li>○ September will be used to assess student needs and social emotional supports</li> </ul> </li> <li>● Mental Health Supports: Yes                             <ul style="list-style-type: none"> <li>○ Social Emotional Learning</li> <li>○ Trauma-informed Staff Training</li> <li>○ Jefferson Health Partnership</li> </ul> </li> <li>● Curriculum &amp; Instruction:                             <ul style="list-style-type: none"> <li>○ Balanced Literacy, <a href="#">Go! Math</a>, <a href="#">Foundations</a>, <a href="#">Mystery Science</a>, Basic Skills/Academic Support</li> </ul> </li> <li>● Classroom Tools:                             <ul style="list-style-type: none"> <li>○ Book Pouches, Reading Manipulatives (K-3); Classroom Libraries; Math Manipulatives; Flexible Seating</li> </ul> </li> <li>● Technology Resources:                             <ul style="list-style-type: none"> <li>○ <a href="#">Google Classroom</a>, <a href="#">Class Dojo</a>, <a href="#">Seesaw</a>, <a href="#">Imagine Math</a>, <a href="#">Common Lit</a>, <a href="#">Class Kick</a>, <a href="#">Prodigy</a>, Google Suite for Education, Chromebooks, ENO Interactive Whiteboard</li> </ul> </li> <li>● Special Programs:                             <ul style="list-style-type: none"> <li>○ STAR Assemblies, STAR Academy, Thematic Celebrations, PTA Family Events, Commitment to Student Success Programs, <a href="#">No Place for Hate Initiatives</a>, <a href="#">Bookmates</a>, <a href="#">Just Kids (Before &amp; After Care)</a></li> </ul> </li> </ul>

**OAKLYN SCHOOL**



**Location:** Oaklyn Elementary School, 136 Kendall Boulevard, Oaklyn, NJ 08107

**Program Staff:**

Ms. Jennifer Boulden, Principal  
 Email: [jboulden@oaklynschool.org](mailto:jboulden@oaklynschool.org)  
 Phone: (856) 858-0335 x7226

Mrs. Diane Silliphant, School Secretary  
 Email: [dsilliphant@oaklynschool.org](mailto:dsilliphant@oaklynschool.org)  
 Phone: (856) 858-0335 x7226

Mrs. Mary Hopkins, School Nurse  
 Email: [mhopkins@oaklynschool.org](mailto:mhopkins@oaklynschool.org)  
 Phone: (856) 858-0335 x7123

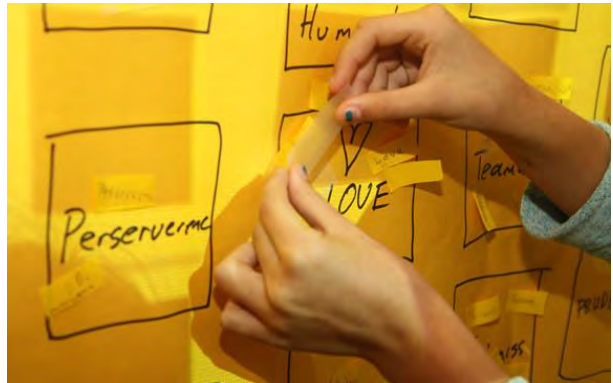
Mrs. Angela Funk, CST/School Secretary  
 Email: [afunk@oaklynschool.org](mailto:afunk@oaklynschool.org)  
 Phone: (856) 858-0335 x7136

Mrs. Vivian Barnett, School Social Worker  
 Email: [vbarnett@oaklynschool.org](mailto:vbarnett@oaklynschool.org)  
 Phone: (856) 858-0335 x7127

Mrs. Richele Boyce, Cafeteria Manager  
 Email: [oak@nsfm.com](mailto:oak@nsfm.com)  
 Phone: (856) 858-0335 x7183

Health & Safety	Teaching & Learning
<ul style="list-style-type: none"> <li>● Masks Required:                             <ul style="list-style-type: none"> <li>○ Indoors (Yes)</li> <li>○ Outdoors (Optional)</li> </ul> </li> <li>● Sanitizing:                             <ul style="list-style-type: none"> <li>○ Hand washing stations in all classrooms</li> <li>○ Hand sanitizer pumps in high traffic areas</li> </ul> </li> <li>● Vaccination:                             <ul style="list-style-type: none"> <li>○ Students under age 12 are not eligible at this time</li> </ul> </li> <li>● Visitors:                             <ul style="list-style-type: none"> <li>○ By Appointment Only (Masks Required)</li> </ul> </li> <li>● Lunch Served: Yes                             <ul style="list-style-type: none"> <li>○ Grades K-1: 11:00 - 11:30am</li> <li>○ Grades 2-3: 11:45 - 12:15</li> <li>○ Grades 4-5: 12:30 - 1:00</li> </ul> </li> <li>● Playground Use: Yes                             <ul style="list-style-type: none"> <li>○ Physical distancing of 6 feet.</li> <li>○ Hands sanitized before/after recess</li> </ul> </li> <li>● Updated Signage: Yes</li> </ul>	<ul style="list-style-type: none"> <li>● School Hours: 8:15am – 2:45pm                             <ul style="list-style-type: none"> <li>○ Arrival: 8:05am – 8:15am</li> <li>○ Dismissal: 2:45pm</li> </ul> </li> <li>● Classroom Adjustments:                             <ul style="list-style-type: none"> <li>○ Setup will follow CDC guidelines</li> <li>○ Students to remain in cohorts; small group tables used</li> <li>○ Classroom cubbies/ storage bins used</li> <li>○ Outdoor spaces utilized to support learning activities</li> <li>○ September will be used to assess student needs and social emotional supports</li> </ul> </li> <li>● Mental Health Supports: Yes                             <ul style="list-style-type: none"> <li>○ Social Emotional Learning</li> <li>○ Trauma-informed Staff Training</li> <li>○ Jefferson Health Partnership</li> </ul> </li> <li>● Curriculum &amp; Instruction:                             <ul style="list-style-type: none"> <li>○ Reading &amp; Writing Workshop, <a href="#">Go! Math</a>, <a href="#">Foundations</a>, Words Their Way, <a href="#">Mystery Science</a>, Basic Skills/Academic Support, Commitment to Student Success Program</li> </ul> </li> <li>● Classroom Tools:                             <ul style="list-style-type: none"> <li>○ Reading Manipulatives (K-3); Classroom Libraries; Math Manipulatives; Flexible Seating</li> </ul> </li> <li>● Technology Resources:                             <ul style="list-style-type: none"> <li>○ <a href="#">BrainPop</a>, <a href="#">Scholastic News</a>, <a href="#">Imagine Math</a>, <a href="#">Common Lit</a>, <a href="#">Google Suite for Education</a>, <a href="#">Epic</a> (Digital Library for Kids), <a href="#">ClassKick</a>, <a href="#">Khan Academy</a>, <a href="#">Quizizz</a>, <a href="#">Class Dojo</a>, Chromebooks, Mimio Interactive Whiteboards</li> </ul> </li> <li>● Special Programs:                             <ul style="list-style-type: none"> <li>○ STREAM, Gifted &amp; Talented, ESL, Hawks Student Recognition Program, Student Clubs, <a href="#">Just Kids (Before &amp; After Care)</a></li> </ul> </li> </ul>

**COLLINGSWOOD MIDDLE SCHOOL**



**Location:** Collingswood Middle School, 414 W Collings Ave, Collingswood, NJ 08108

**Program Staff:**

Dr. Jack McMullin, Principal  
 Email: jmcullin@collsk12.org  
 Phone: 856-962-5702

Katy Seeley, School Secretary  
 Email: kseeley@collsk12.org  
 Phone: 856-962-5702 X 6500

Stephanie Reilly, School Nurse  
 Email: reilly2@collsk12.org  
 Phone: 856-962-5702 X 6508

Mike Jefferson, Assistant Principal  
 Email: mjefferson@collsk12.org  
 Phone: 856-962-5702

Health & Safety	Teaching & Learning
<ul style="list-style-type: none"> <li>• Masks Required:                             <ul style="list-style-type: none"> <li>◦ Indoors (Yes)</li> <li>◦ Outdoors (Optional)</li> </ul> </li> <li>• Sanitizing:                             <ul style="list-style-type: none"> <li>◦ Hand sanitizer pumps available in all classrooms and in high traffic areas</li> </ul> </li> <li>• Vaccination:                             <ul style="list-style-type: none"> <li>◦ Students age 12 and older are eligible to receive.</li> <li>◦ Families should consult with their physician for details</li> </ul> </li> <li>• Visitors:                             <ul style="list-style-type: none"> <li>◦ By Appointment Only (Masks Required)</li> </ul> </li> <li>• Lunch Served: Yes                             <ul style="list-style-type: none"> <li>◦ Lunch 1: 10:27 – 10:52am</li> <li>◦ Lunch 2: 11:11 – 11:36am</li> <li>◦ Lunch 3: 11:55 – 12:20pm</li> </ul> </li> <li>• Updated Signage: Yes</li> </ul>	<ul style="list-style-type: none"> <li>• School Hours: 8:00am – 2:32pm                             <ul style="list-style-type: none"> <li>◦ Arrival: 7:30am – 8:00am</li> <li>◦ CMS Cafeteria opens at 7:30am. Eldridge Avenue doors will be opened at 7:50am for students to enter the school building and report to homeroom by 8:00am.</li> <li>◦ Dismissal: 2:32pm</li> </ul> </li> <li>• Classroom Adjustments:                             <ul style="list-style-type: none"> <li>◦ Setup will follow CDC guidelines</li> <li>◦ Later start time, new homeroom period</li> <li>◦ September will be used to assess student needs and social emotional supports</li> </ul> </li> <li>• Mental Health Supports: Yes                             <ul style="list-style-type: none"> <li>◦ Social Emotional Learning</li> <li>◦ Trauma-informed Staff Training</li> </ul> </li> <li>• Curriculum &amp; Instruction:                             <ul style="list-style-type: none"> <li>◦ Core classes are offered at each grade level in the areas of Science, Math, Social Studies, Writing, Language Arts, and Physical Education. In addition, Encore classes (i.e., electives) are available. Academic Support is provided to students through labs and tutorial classes. Social Emotional Learning Support will be provided through daily student check-ins.</li> </ul> </li> <li>• Technology Resources:                             <ul style="list-style-type: none"> <li>◦ <a href="#">Imagine Math</a>, <a href="#">Common Lit</a>, <a href="#">Google Suite for Education</a>, <a href="#">ClassKick</a>, <a href="#">Khan Academy</a>, Chromebooks, Document Cameras, Digital Interactive Whiteboards</li> </ul> </li> <li>• Special Programs:                             <ul style="list-style-type: none"> <li>◦ Community Service Program, Middle School Sports, <a href="#">Collingswood Middle School Clubs &amp; Activities</a></li> </ul> </li> </ul>

**COLLINGSWOOD HIGH SCHOOL**



**Location:** Collingswood High School, 424 W Collings Ave, Collingswood, NJ 08108

**Program Staff:**

Matt Genna, Principal  
 Email: [mgenna@collsk12.org](mailto:mgenna@collsk12.org)  
 Phone: 856-962-5701

Colleen Harte, Vice Principal/ Athletic Director  
 Email: [charte@collsk12.org](mailto:charte@collsk12.org)  
 Phone: 856-962-5701

Ron Hamrick, Supervisor of Student Services  
 Email: [rhamrick@collsk12.org](mailto:rhamrick@collsk12.org)  
 Phone: 856-962-5701

Lisa Marchionne, Administrative Assistant  
 Email: [lmarchionne@collsk12.org](mailto:lmarchionne@collsk12.org)  
 Phone: 856-962-5701 x 6005

Chrisa Riviello, School Secretary  
 Email: [criviello@collsk12.org](mailto:criviello@collsk12.org)  
 Phone: 856-962-5701 x 6000

Angela Robinson, School Secretary  
 Email: [arobinson@collsk12.org](mailto:arobinson@collsk12.org)  
 Phone: 856-962-5701 x 6001

Sarah Mervine, School Nurse  
 Email: [smervine@collsk12.org](mailto:smervine@collsk12.org)  
 Phone: 856-962-5701 x 6509

Linda Johnson, Athletics Office Secretary  
 Email: [ljohnson@collsk12.org](mailto:ljohnson@collsk12.org)  
 Phone: 856-962-5701 x 6147

Health & Safety	Teaching & Learning
<ul style="list-style-type: none"> <li>● Masks Required:                             <ul style="list-style-type: none"> <li>○ Indoors (Yes)</li> <li>○ Outdoors (Optional)</li> </ul> </li> <li>● Sanitizing:                             <ul style="list-style-type: none"> <li>○ Hand sanitizer pumps available in all classrooms and in high traffic areas</li> </ul> </li> <li>● Vaccination:                             <ul style="list-style-type: none"> <li>○ Students age 12 and older are eligible to receive.</li> <li>○ Families should consult with their physician for details</li> </ul> </li> <li>● Visitors:                             <ul style="list-style-type: none"> <li>○ By Appointment Only (Masks Required)</li> </ul> </li> <li>● Lunch Served: Yes                             <ul style="list-style-type: none"> <li>○ Students will be assigned to one of three sessions:</li> <li>○ Lunch 1: 10:27 – 10:52am</li> <li>○ Lunch 2: 11:11 – 11:36am</li> <li>○ Lunch 3: 11:55 – 12:20pm</li> </ul> </li> <li>● Updated Signage: Yes</li> </ul>	<ul style="list-style-type: none"> <li>● School Hours: 8:00am – 2:32pm                             <ul style="list-style-type: none"> <li>○ Arrival: 7:30am – 8:00am</li> <li>○ CHS Cafeteria opens at 7:30am. CHS doors will be opened at 7:50am for students to enter the school building and report to homeroom by 8:00am.</li> <li>○ Dismissal: 2:32pm</li> </ul> </li> <li>● Classroom Adjustments:                             <ul style="list-style-type: none"> <li>○ Setup will follow CDC guidelines</li> <li>○ Later start time, new homeroom period</li> <li>○ September will be used to assess student needs and social emotional supports</li> </ul> </li> <li>● Mental Health Supports: Yes                             <ul style="list-style-type: none"> <li>○ Social Emotional Learning</li> <li>○ Trauma-informed Staff Training</li> </ul> </li> <li>● Curriculum &amp; Instruction:                             <ul style="list-style-type: none"> <li>○ Revised curricula in various content areas, new elective offerings, and social emotional learning opportunities.</li> </ul> </li> <li>● Technology Resources:                             <ul style="list-style-type: none"> <li>○ Google Suite for Education, Chromebooks, Document Cameras, Digital Interactive Whiteboards</li> </ul> </li> <li>● Special Programs:                             <ul style="list-style-type: none"> <li>○ Digital Production and Audio Engineering; Television Production; Design Technology; Dual Enrollment options (college credit); Advanced Placement courses, Interscholastic Athletics, Performing Arts, Instrumental Music Programs, Various clubs/extracurricular activities</li> </ul> </li> </ul>