

Profile of Educational Service Unit 16

Ogallala, Nebraska

Deb Paulman, Administrator

2021-2022



www.esu16.org

[Instagram](#)

[Facebook](#)

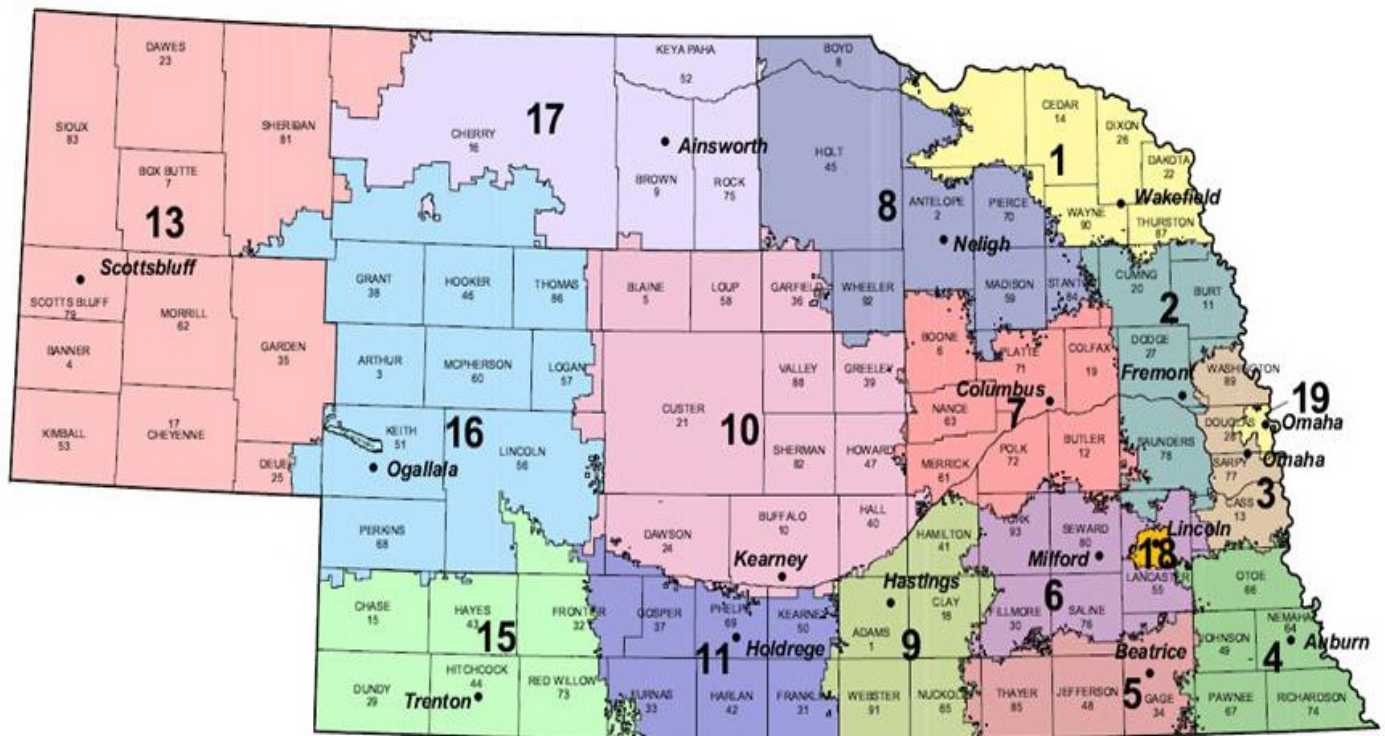
[Twitter](#)

GENERAL INFORMATION

Recognizing inequities, which have long produced problems for both children and school districts, the Nebraska legislature passed a special bill, LB 301, in August of 1965, creating 19 educational service units. Their express purpose, according to that law, was to “provide supplementary educational services to local districts.” The legislature later realigned unit boundaries into 17 multi-county units, plus Omaha and Lincoln for a total of 19 ESU’s. Due to consolidation, there are currently 17 ESU’s in the state.

Beginning January 1, 2009, LB603 established that ESU election districts would be developed based upon three factors: substantially equal population, compact and contiguous boundaries. Each ESU is governed by an elected board consisting of 5 to 12 members with one official elected from each election district. The election district boundaries will need to be redrawn every 10 years based upon census information.

Educational Service units are a political subdivision of the State of Nebraska and are partially financed by a tax levy that cannot, by statute, exceed one and one-half cents per \$100 actual valuation for the general fund. Additional funding comes from contracts with local school districts for services provided; State Aid for Telecomputing and Core Services; and Federal & State Grants.



The Role and Mission of Educational Service Units

79-1204. ROLE AND MISSION.

(1) The role and mission of the educational service units is to serve as educational service providers in the state's system of elementary and secondary education.

(2) Educational service units shall:

- a. Act primarily as service agencies in providing core services and services identified and requested by member school districts;
- b. Provide for economy, efficiency, and cost-effectiveness in the cooperative delivery of educational services;
- c. Provide educational services through leadership, research, and development in elementary and secondary education;
- d. Act in a cooperative and supportive role with the State Department of Education and school districts in development and implementation of long-range plans, strategies, and goals for the enhancement of educational opportunities in elementary and secondary education; and
- e. Serve, when appropriate and as funds become available, as a repository, clearinghouse, and administrator of federal, state, and private funds on behalf of school districts which choose to participate in special programs, projects, or grants in order to enhance the quality of education in Nebraska schools.

(3) Core services shall be provided by educational service units to all member school districts. Core services shall be defined by each educational service unit as follows:

- a. Core services shall be within the following service areas in order of priority: (i) Staff development, which shall include access to staff development related to improving the achievement of students in poverty and students with diverse backgrounds; (ii) Technology, including distance education services; and (iii) Instructional Materials services;
- b. Core services shall improve teaching and student learning by focusing on enhancing school improvement efforts, meeting statewide requirements, and achieving statewide goals in the state's system of elementary and secondary education;
- c. Core services shall provide schools with access to services that:
 - (i) The educational service unit and its member school districts have identified as necessary services;
 - (ii) Are difficult, if not impossible, for most individual school districts to effectively and efficiently provide with their own personnel and financial resources;
 - (iii) Can be efficiently provided by each educational service unit to its member school districts; and
 - (iv) Can be adequately funded to ensure that the service is provided equitably to the state's public school districts;

- d. Core services shall be designed so that the effectiveness and efficiency of the service can be evaluated on a statewide basis; and
 - e. Core services shall be provided by the educational service unit in a manner that minimizes the cost of administration or service delivery to member school districts.
- (4) Educational service units shall meet minimum accreditation standards set by the State Board of Education that will:
- a. Provide for accountability to taxpayers;
 - b. Assure that educational service units are assisting and cooperating with school districts to provide for equitable and adequate educational opportunities statewide; and
 - c. Assure a level of quality in educational programs and services provided to school districts by the educational service units.
- (5) Educational service units may contract to provide services to:
- a. Nonmember public school districts
 - b. Nonpublic school systems;
 - c. Other educational service units; and
 - d. Other political agencies, under the Interlocal Cooperation Act, and Joint Public Agency Act.
- (6) Educational service units shall not regulate school districts unless specifically provided pursuant to another section of law.
- (7) The board of any educational service unit in this state may pay from its funds an amount to be determined by the board for membership dues in associations of school boards or boards of education.

(Laws 2016)

2021-2022

EDUCATIONAL SERVICE UNIT 16 BOARD

Position	Name
President	Judy Thompson
Vice President	Rod Rayburn
Secretary	Margaret “Sooky” Marks

Election District	Name	Term Ends
District 1	Julie Boettcher	2022
District 2	Rod Rayburn	2024
District 3	Bill McGahan	2022
District 4	Robert Jones	2024
District 5	Nikki Bergeron	2022
District 6	Judy Thompson	2024
District 7	Mel McNea	2022
District 8	Margaret “Sooky” Marks	2024
District 9	Judy Seger	2022
District 10	Bill Eakins	2024
District 11	John Frates	2022
District 12	Claudia Melvin	2024
Treasurer	Amber Lutz	Appointed
Recording Secretary	Michelle Walker	Appointed

EDUCATIONAL SERVICE UNIT 16 BOARD

Functions

The Board's responsibilities include the establishment of educational policies and administrative regulations governing the service unit, approval of programs and services recommended in response to needs as determined by the ESU 16 Advisory Council, adoption of an annual budget for the administration and operation of the service unit, and the hiring and establishment of a procedure for evaluation of the Unit Administrator and staff.

Meeting Times and Places

Board meetings are usually scheduled on the third Tuesday of each month at 12:30 p.m. MT in the ESU 16 administrative offices in Ogallala except the month of July. No meeting is held in July. The meeting dates and times are subject to change. A list of meeting dates may be acquired by contacting the administrative assistant. Members of the public are always welcome to attend.

Legal Notice of the Regular Board Meetings are published on the ESU 16 website, <https://www.esu16.org/>, the Telegraph, the Keith County News and the agenda is posted at the ESU 16 Administrative Offices in Ogallala, Nebraska.

Agenda

A copy of the agenda is sent to Board members before the meetings so they can study the materials and come prepared to question, discuss and take action.

Board materials are also available to the public in the Board Recording Secretary's office and at the meeting itself.

Seven Board Members must be in attendance to conduct business.

The meetings regularly include the flag salute, recognition of the Open Meetings Law; approval of minutes and bills; a financial report, action and discussion items; reports from the program directors; and the administrator and out-of-unit travel report.

Educational Service Unit 16

Information

2021-2022



2021-22 Budget

Budget Summary 2021-22

PROGRAMS / CODE	PROJECTED	Contracts,	PROPERTY	STATE	CORE	FEDERAL	CASH
	EXPENDITURES	(LEA)	TAXES	FUNDS	FUNDS	FUNDS	RESERVE
HIGH ABILITY LEARNERS (1100-xxx-000-000)	-	-					-
HEALTH SERVICES (1200-xxx-000-000)	6,250	6,250					-
PROGRAM SUPERVISION (1200-xxx-000-400)	195,297	129,752				65,545	-
SPECIAL EDUCATION CONSULTANT (1200-xxx-000-401)	39,243	39,243					-
INCLUSION FACILITATOR (1200-xxx-000-402)	-	-					-
BEHAVIORAL CONSULTANT (1200-xxx-000-403)	-	-					-
TRANSITION CONSULTANT (1200-xxx-000-404)	247,167	195,849		20,500			30,818
DEAF EDUCATION (1200-xxx-000-405)	86,664	86,664					-
TRANSITION DAY PROGRAM (1200-xxx-000-406)	169,811	134,811					35,000
RESOURCE TEACHER (1200-xxx-000-409)	-	-					-
PRESCHOOL PROGRAM Below Age 5 (1296-xxx-000-437)	471,900	431,223					40,677
SCHOOL SOCIAL WORKER (2110-xxx-000-000)	-	-	-				-
LIMHP (2130-XXX-000-000)	351,998	249,277	27,110			75,611	
PSYCHOLOGICAL SERVICES (2141-xxx-000-000)	204,096	196,185					7,911
SPEECH LANGUAGE PATHOLOGIST (2151-xxx-000-407)	636,026	572,515				54,610	8,901
AUDIOLOGIST (2151-xxx-000-408)	35,817	35,817					(0)
OCCUPATIONAL THERAPY (2161-xxx-000-000)	287,809	287,809					-
PHYSICAL THERAPY (2171-xxx-000-000)	83,479	83,479					-
VISUALLY IMPAIRED (2181-xxx-000-000)	-	-					-
CONTINUOUS IMPROVEMENT (2211-xxx-000-000)	24,019		24,019				-
INSTRUCTIONAL STAFF TRAINING (2213-XXX-000-000)	622,280	20,000	515,972		86,308		-
ESU BOARD OF CONTROL (2310-xxx-000-000)	113,560		113,560				-
EXECUTIVE ADMINISTRATION (2320-xxx-000-000)	470,501	7,500	438,501		13,500		11,000
LEGAL SERVICE (2330-xxx-000-000)	10,000		5,000				5,000
FISCAL SERVICES (2510-xxx-000-000)	95,774		95,774				-
PERSONNEL SERVICES (2570-520-000-000)	65,000	65,000					-
TECHNOLOGY SERVICES-NETWORK OPERATIONS (2580-XXX-000-411)	189,316		134,584		54,732		-
TECHNOLOGY SERVICES-TELECOMMUTING/INTERNET (2580-xxx-000-412)	166,489		97,022		69,468		-
TECHNOLOGY SERVICES-SNDEN (2580-xxx-000-414)	1,375,478	800,200				547,793	27,485
OPERATIONS OGALLALA CENTRAL OFFICE (2610-xxx-000-415)	58,006		58,006				-
OPERATIONS NPSSC (2610-xxx-000-416)	70,956		70,956				-
VEHICLE PURCHASING (2650-xxx-000-000)	50,000		20,000				30,000
ROOTED IN RELATIONSHIPS (3400-xxx-000-000)	145,000	-		145,000			-
APPLEGATE GRANTS (3400-xxx-000-xxx)	45,000			45,000			-
OTHER STATE CATEGORICAL GRANTS (3500-XXX-000-XXX)	99,663			99,663			-
SWEEP North Platte (3500-xxx-000-423)	46,900			46,900			-
SWEEP Ogallala (3500-xxx-000-424)	32,981			32,981			-
EDN SERVICE COORDINATION (3500-xxx-000-427)	112,884			112,884			-
HIGH PLAINS EARLY LEARNING CONNECTIONS (3540-xxx-000-000)	148,727			148,727			-
BUILDING ACQUISITION AND IMPROVEMENTS (4700-XXX-000-000)	1,200,000						1,200,000
TITLE I COOPERATIVE (6200-xxx-000-000)	375,869					375,869	
TITLE I ACCOUNTABILITY (6210-xxx-000-000)							
TITLE IIA CONSORTIUM (6310-XXX-000-000)	192,378					192,378	
PLANNING REGION TEAM GRANT (6416-xxx-000-000)	17,102					17,102	-
IDEA PART B PEAK GRANT (6418-xxx-000-000)	46,658					46,658	-
CARL PERKINS VOCATIONAL GRANT (6700-xxx-000-000)	43,268					43,268	-
TITLE IV (6969-xxx-000-000)	39,111					39,111	-
MISC FEDERAL GRANTS (6990-890-000-444)	983,639					983,639	-
RUS GRANT (6990-xxx-000-000)	500,000					500,000	-
PBIS GRANT (6990-xxx-000-446)	9,000					9,000	-
							-
							-
							-
							-
							-
LOCAL FUNDS 5500							-
NON REVENUE 5600							-
SECTION 125 PLAN 8000							-
GRANT CARRYOVERS							-
TOTALS	10,165,115	3,341,574	1,600,503	651,656	224,008	2,950,584	1,396,792
General Fund Tax Levy Minus 1% CTF			1,479,485				
1% County Treasurer Fee			14,795				
General Fund Tax Levy Total			1,494,280				
Interest Income			20,000				
			1,514,280				

-19.86% Percent Difference from 2020-21 Budget

2020-21 Levy .014805

2021-22 Levy .015

#1 2021-2022 Calendar																				
EDUCATIONAL SERVICE UNIT 16																				
Ogallala, NE																				
2021							2022													
S	M	Tu	W	Th	F	S	S M Tu W Th F S													
							July 5-Offices closed (Observance of Independence Day)													
July							January 21													
							August 2-Resume Regular Office Hours 1													
4	5	6	7	8	9	10	2 3 4 5 6 7 8													
11	12	13	14	15	16	17	August 9-All Staff First Day/Edventurous PLC 9 10 11 12 13 14 15													
18	19	20	21	22	23	24	16 17 18 19 20 21 22													
25	26	27	28	29	30	31	August 13-ALL Staff In-service 23 24 25 26 27 28 29													
							30 31													
August 17							September 6-(Labor Day) ESU Offices closed February 20													
1	2	3	4	5	6	7	October 8-(Fall Break) ESU Offices Open 6 7 8 9 10 11 12													
8	9	10	11	12	13	14	13 14 15 16 17 18 19													
15	16	17	18	19	20	21	October 11-Edventurous PLC 20 21 22 23 24 25 26													
22	23	24	25	26	27	28	27 28													
29	30	31					October 22-All Staff In-Service													
September 21							March 22													
							November 24-26-(Thanksgiving Break) 1 2 3 4 5													
5	6	7	8	9	10	11	ESU Office Closed 25-26 6 7 8 9 10 11 12													
12	13	14	15	16	17	18	13 14 15 16 17 18 19													
19	20	21	22	23	24	25	December 20-January 2-(Christmas Vacation) 20 21 22 23 24 25 26													
26	27	28	29	30			or follow assigned school schedule 27 28 29 30 31													
							ESU Offices closed Dec 23-24 & Dec 30-31													
October 20							January 3-All Staff Returns April 19													
							1 2 1 2													
3	4	5	6	7	8	9	January 21-All Staff In-Service 3 4 5 6 7 8 9													
10	11	12	13	14	15	16	10 11 12 13 14 15 16													
17	18	19	20	21	22	23	February 21-Edventurous PLC 17 18 19 20 21 22 23													
24	25	26	27	28	29	30	24 25 26 27 28 29 30													
31							March 4-(Spring Recess) ESU Office closed													
November 19							May 13													
							1 2 3 4 5 6 7													
7	8	9	10	11	12	13	March 18-All Staff In-Service 8 9 10 11 12 13 14													
14	15	16	17	18	19	20	15 16 17 18 19 20 21													
21	22	23	24	25	26	27	April 15-18-(Easter Recess) ESU Office Closed 22 23 24 25 26 27 28													
28	29	30					29 30 31													
							May 13-All Staff In-Service													
December 13							June													
							May 18-Last day for Staff 1 2 3 4													
5	6	7	8	9	10	11	or follow assigned school schedule 5 6 7 8 9 10 11													
12	13	14	15	16	17	18	Last day for Para-educators 12 13 14 15 16 17 18													
19	20	21	22	23	24	25	19 20 21 22 23 24 25													
26	27	28	29	30	31							May 31-(Memorial Day) ESU Offices Closed 26 27 28 29 30								
							June 1-Summer office Hrs													
							7:30-4:00 Mon-Thurs													
							7:30--2:00 Fri													
							Calendar Key													
							Teacher Workdays 180													
							In-service/Workdays 5													
							Preschool - Continuous Services													
							11/24, 12/22, 12/29 office closes													
							at 12:00 p.m.													
							Recess Days 12													
							Important Days 7													
							Para-educators 192													

EDUCATIONAL SERVICE UNIT NO. 16

314 West First Street
Ogallala, NE 69153
Phone: 308 284-8481 Fax: 308 284-8483
Deb Paulman, Administrator

2021 - 2022 BOARD MEETING SCHEDULE

August 17, 2021	11:45 a.m. MT Lunch 12:30 p.m. MT Meeting	Central Office, Ogallala ESU 16 Conference Room
September 14, 2021	6:00 p.m. MT Dinner 7:00 p.m. MT Budget Hearing 7:15 p.m. MT Tax Request Hearing 7:30 p.m. MT Meeting	Central Office, Ogallala ESU 16 Conference Room ESU 16 Conference Room ESU 16 Conference Room
October 19, 2021	11:45 a.m. CT Lunch 12:30 p.m. CT Meeting	Special Services Center, N. Platte Special Services Center, N. Platte
November 15, 2021 *Monday	11:45 a.m. MT Lunch 12:30 p.m. MT Meeting	Central Office, Ogallala ESU 16 Conference Room
December 21, 2021	11:45 a.m. MT Lunch 12:30 p.m. MT Meeting	Central Office, Ogallala ESU 16 Conference Room
January 18, 2022	11:45 a.m. MT Lunch 12:30 p.m. MT Meeting	Central Office, Ogallala ESU 16 Conference Room
February 15, 2022	11:45 a.m. MT Lunch 12:30 p.m. MT Meeting	Central Office, Ogallala ESU 16 Conference Room
March 15, 2022	11:45 a.m. MT Lunch 12:30 p.m. MT Meeting	Central Office, Ogallala ESU 16 Conference Room
April 19, 2022	11:45 a.m. MT Lunch 12:30 p.m. MT Meeting	Central Office, Ogallala ESU 16 Conference Room
May 17, 2022	11:45 a.m. MT Lunch 12:30 p.m. MT Meeting	Central Office, Ogallala ESU 16 Conference Room
June 21, 2022	11:45 a.m. MT Lunch 12:30 p.m. MT Meeting	Central Office, Ogallala ESU 16 Conference Room

2021-2022 Schedule

ESU 16 Offices will be closed on the following days:

July 5 - Independence Day Observance

September 6 - Labor Day

November 25 & 26 - Thanksgiving Vacation

December 23 & 24 - Christmas Vacation

December 30 & 31 - New Year's Vacation

March 4 - Spring Recess

April 15 & 18 - Easter Break

May 30 - Memorial Day

ESU 16 Office Hours

Monday through Friday

7:30 a.m. - 4:00 p.m.

Summer Hours

7:30 a.m. - 4:00 p.m., Monday through Thursday

(June 1 - July 31)

7:30 a.m. - 2:00 p.m. Fridays Only

ESU 16 Telephone Numbers

Special Services Center North Platte (308) 534-2416
Central Office Ogallala (308) 284-8481

Administrator - Deb Paulman (308) 284-7518
 Administrative Assistant SSC North Platte - Deana Holley (308) 221-6052
 Administrative Assistant Central Office - Michelle Walker (308) 284-7516
 Business Manager - Amber Lutz (308) 284-7514

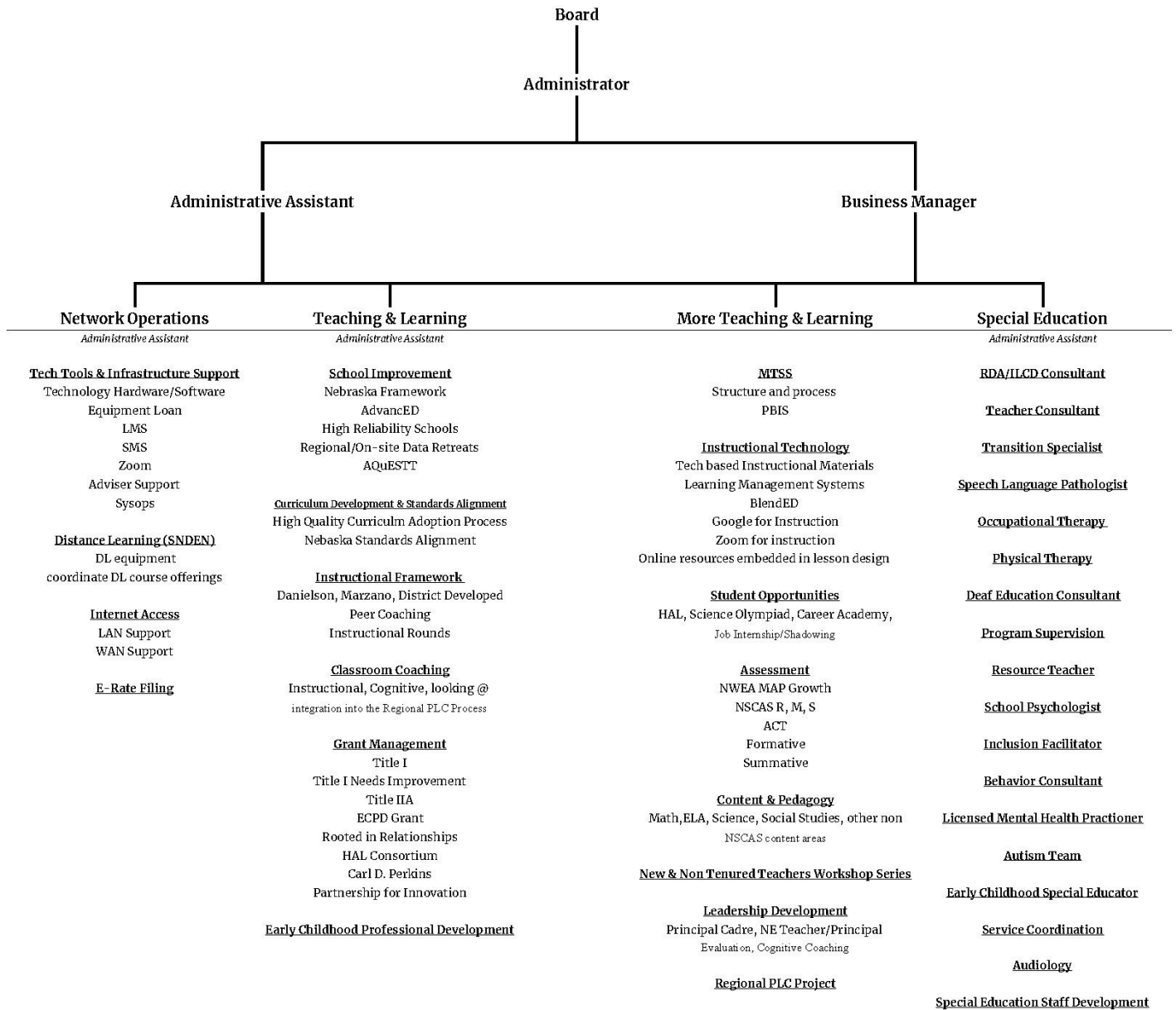
Teaching & Learning Director - Alison Smith (308) 221-6289
 Teaching & Learning Coordinator - Briana Hawks (308)
 Teaching & Learning Coordinator - Mackenzie Carstens (308) 221-6298
 Teaching & Learning/Reading Specialist - Kelly Beveridge (308) 534-2416

Early Learning Connection Coordinator - Cheryl Roche (308) 284-7510

Network Operations Director - Scott Jones (308) 221-6226
 NO Technology Coordinator/Carl Perkins Coordinator - Melissa Engel (308) 284-7513
 Network Operations Network Coordinator - Chad DeWester (308) 284-7505
 Network Operations Distance Learning Coordinator - Todd Hatcher (308) 221-6299

Director of Special Services - Molly Walz (308) 221-6235
 Administrative Assistant Special Services - Michelle Walker (308) 284-7516
 Psychologist - Catherine Ruhlman (308) 284-7508
 Psychologist - Carmen McMahon (308) 221-6309
 Licensed Independent Mental Health Care Practitioner - Gwen Bergstrom (308) 221-6321
 Licensed Independent Mental Health Care Practitioner - Jamie Meisner (308) 284-7507
 School Social Worker - Sara Gentry (308) 221-6351
 School Social Worker Intern - Cassidy Eggers (308)
 Early Childhood Coordinator/Teacher - Jo Lee (308) 386-4867
 Speech Consultant - Angie McBride (308) 284-8481
 Speech Consultant - Anne Walton (308) 284-7519
 Speech Consultant - Becky Burke (308) 386-4867
 Speech Consultant - Caitlin Adams (308) 284-8481
 Speech Consultant - Danica Sowle (308) 221-6231
 Speech Consultant - Emily Johnson (308) 221-6213
 Speech Consultant - Julie Robertson (308) 534-2416
 Speech Consultant - Shelby Webster (308)
 Teacher Consultant - Denise Brauer (308) 534-2416
 Inclusion/Transition Consultant - Lou Cox-Fornander (308) 221-6238
 Inclusion/Transition Consultant - Megan Lantis (308) 221-6278
 Audiologist - Dawn Schmitt (308) 221-6237
 Deaf Education Consultant - Darsha Pelland (308) 221-6349
 Opportunity With Life Skills (OWLS) Special Education Teacher - Laurie Vak (308) 568-9843
 Early Development Service Coordinator - April Wilson (308) 284-7524
 Early Development Service Coordinator - Kaelyn Klaasmeyer (308) 386-4867
 I³ STEM Facilitator - Cathy Weaver (308)

Profile of Services



Educational Service Unit 16

Purpose, Direction, Beliefs And Core Values

Purpose Statement:

ESU 16 provides visionary leadership and equitable access to services for all learners.

Direction/Vision:

Leading and facilitating the coordination of shared resources and services for all learners.

Tag Line:

Leadership and service.

Belief and Core Value Statements:

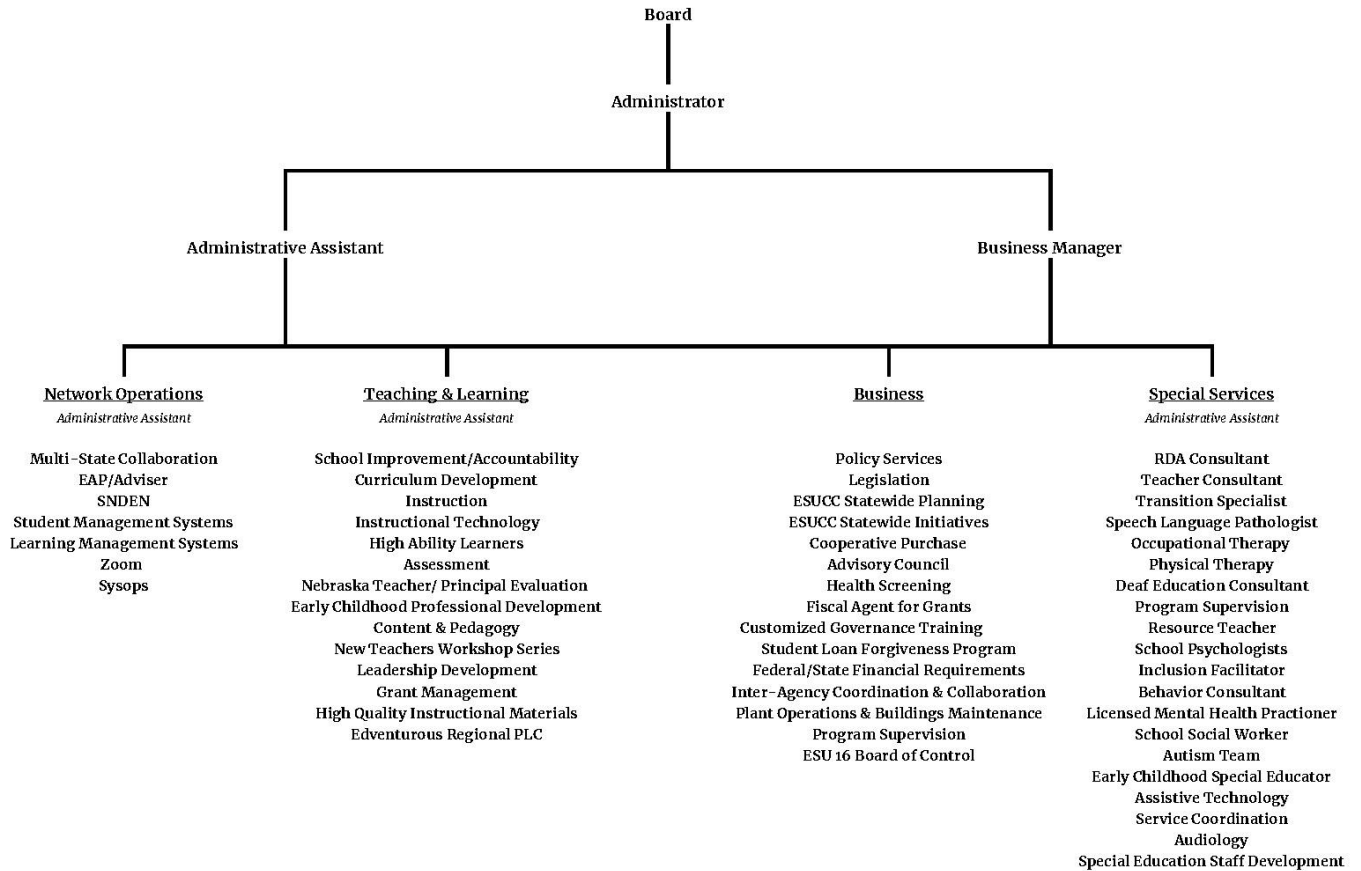
ESU 16 commits to:

- all learners & positive learning environments
- partnerships & relationships
- collaboration & communication
- responsiveness & responsibility
- leadership & accountability

Continuous Improvement Goals for the Agency:

1. To continuously improve leadership and services through the systemic use of data for decision making.
 - Objective 1: Implementation of SIMPL
 - Objective 2: Develop evaluation tool(s) to evaluate job alike CIP efforts & utilize data to improve practice.
 - Objective 3: Embed an annual orientation process for new and returning staff to be delivered during the August Opening Inservice Day.
 - Objective 4: Ongoing individual professional growth is directed by data from staff evaluation and job alike focus that results in improved practice for all staff.
 - Objective 5: Steering committee uses annual systematic data informed process to drive continuous agency improvement.
1. To continuously improve service and leadership through effective communication.
 - Objective 1: Improve communication with (external) on-line audiences.
 - Objective 2: Improve communication internally, among staff.

Lines of Communication





**2021-2022
ESU 16 Administrators
Advisory Council Meeting Dates**

<p><u>August 9, 2021</u> Monday - PLC 9:00 a.m. - 12:00 p.m. CT Sutherland Public Schools</p>	<p><u>January 18, 2022</u> Tuesday 9:00 a.m. - 2:30 p.m. CT ESU 16 North Platte Special Services Center <i>ESU15 Superintendents will be joining us at 11:45 a.m. for lunch and afternoon meeting.</i></p>
<p><u>September 8, 2021</u> Wednesday 9:00 a.m. - 2:30 p.m. MT ESU16 Ogallala Central Office <i>ESU15 Superintendents will be joining us at 11:45 a.m. for lunch and afternoon meeting.</i></p>	<p><u>February 2, 2022</u> Wednesday - Annual Board Member Workshop 5:00 p.m. - 9:00 p.m. CT North Platte Senior High School</p>
<p><u>October 11, 2021</u> Monday - PLC 9:00 a.m. - 12:00 p.m. CT Sutherland Public Schools</p>	<p><u>February 21, 2022</u> Monday - PLC 9:00 a.m. - 12:00 p.m. CT Sutherland Public Schools</p>
<p><u>October 25, 2021</u> Monday - Senator's Round Table Time - TBD ESU 16 North Platte Special Services Center <i>ESU15 Superintendents will be joining us. Lunch will be served at 11:45 a.m.</i></p>	<p><u>March 22, 2022</u> Tuesday - WNA 9:00 a.m. - 2:30 p.m. MT ESU 16 Ogallala Central Office <i>ESU15 Superintendents will be joining us at 11:45 a.m. for lunch and afternoon meeting.</i></p>
<p><u>November 9, 2021</u> Tuesday 9:00 a.m. - 1:00 p.m. CT ESU 16 North Platte Special Services Center <i>Lunch will be served at 11:45 a.m.</i></p>	<p><u>April 12, 2022</u> Tuesday 9:00 a.m. - 1:00 p.m. MT ESU 16 Ogallala Central Office <i>Lunch will be served at 11:45 a.m.</i></p>

Addresses

ESU 16 Central Office, 314 West 1st Street, Ogallala, NE
ESU 16 Special Services Center, 1221 West 17th Street, North Platte, NE
North Platte High School, 1220 West 2nd Street, North Platte, NE
Sutherland Public Schools, 401 Walnut Street, Sutherland, NE

ADVISORY COUNCIL

Background

The Advisory Council, consisting of all local school superintendents within the ESU 16 boundaries, has been an advisory group to the ESU 16 administration and board since the Unit was established in 1968. Since that time, the Advisory Council has met three to seven times per year. The main function of the Advisory Council has been to make recommendations to the administration and board concerning programs and services offered by ESU 16.

Organization of Advisory Council

The Advisory Council will consist of superintendents of local school districts within ESU 16 and district program coordinators. Starting in August of each school year, the Advisory Council will meet approximately every other month (5 times) with the exception of June and July. Times and locations of these meetings will be determined at the final spring semester meeting. A chairperson of the Advisory Council will be elected or appointed to serve for each Advisory Council meeting.

The purpose of the Advisory Council will be two-fold. The primary purpose will be to make recommendations to the ESU 16 administration and board concerning programs and services offered by ESU 16. A secondary purpose will be to provide an opportunity for superintendents to share common concerns; discuss and possibly take action on educational issues, which will affect area schools; and to provide a system for dispensing information concerning the Nebraska Department of Education policy and state legislation.

Starting in the 2009-2010 school year, the ESU 15 (Trenton) schools and the ESU 16 (Ogallala) schools began to hold joint Advisory Council meetings in order to create regional efficiencies between the two ESU's. The joint Advisory Council will meet to:

- Provide leadership training opportunities to ESU 15/16 superintendents
- Plan regional events (Senator's Round Table, Board Member Workshop)
- Provide networking opportunities

ESU 15 and 16 will host presentations, round table discussions and focus groups as identified by council members.

Advisory Council Meeting Procedures

ESU 16 Advisory Council meetings will be approximately two and one-half hours in length. Joint ESU 15 and 16 meetings will run approximately two and one-half hours following the ESU 16 Advisory Council. Any voting that is to be done will be done by roll call, or ballot, one vote per school. If a superintendent is absent, he/she may send a representative from his/her school who will have voting privileges.

SIMPL

Service Implementation Model Process and Log (SIMPL) is a data driven process that systematically identifies the needs of ESU 16 member districts and determines services to fill the gaps. SIMPL also provides for comprehensive assessment of ESU 16 programming to support optimal implementation at the school district level. The process engages districts and ESU 16 staff in three stages of data analysis, services design/planning and assessment of implementation at the district level. ESU 16 will be in year three of the SIMPL pilot process.

2021-2022 Advisory Council Members

Arthur County Schools	Barry Schaeffer
Brady Public Schools	James McGown
Hershey Public Schools	Jane Davis
Hyannis Area Schools	Travis Hawk
Maxwell Public Schools	Danny McMurtry
McPherson County Schools	Tim Vanderheiden
Mullen Public Schools	Chris Kuncel
North Platte Public Schools	Ron Hanson
Ogallala Public Schools	Gene Russel
Paxton Consolidated Schools	Del Dack
Perkins County Schools	Phillip Picquet
South Platte Public Schools	David Spencer
Stapleton Public Schools	Brian Redinger
Sutherland Public Schools	Steve Bristol
Thedford Public Schools	Blake Dahlberg
Wallace Public Schools	Joel Ferguson

Educational Service Unit 16

Programs

2021-2022



SPECIAL SERVICES

ESU 16 contracts to schools include the following:

- (1) Supervision of Instruction
- (2) Psychology Services
- (3) Speech/Language Pathology
- (4) Social Worker
- (5) Instructional Materials
- (6) Mileage for personnel delivering Special Services
- (7) Educator of the Deaf and hard of hearing
- (8) Inclusion/Transition
- (9) In-Service
- (10) Early Childhood
- (11) Audiology
- (12) Occupational Therapy
- (13) Physical Therapy

Each school district is billed in eight equal monthly payments, beginning in September, as indicated in the contract for services. The first of eight invoices will be mailed September 25th of each year, with payment to be made by the 20th day of each month. Rate charges from ESU 16 are approved by the Department of Special Services.

PSYCHOLOGY SERVICES

Contact Persons:

Molly Walz, Director of Special Services	(308) 221-6235
Carmen McMahon, North Platte home base	(308) 221-6309
Catherine Ruhlman, Ogallala home base	(308) 284-7508

ESU 16 provides psychological testing for students needing this service. Complete referral requests must be made by individuals requesting psychological examination. The referral process follows NDE Rule 51 guidelines with a Student Assistance Team completing a problem-solving process prior to referral.

When it is determined that non-Special Services interventions have not been effective, then a referral for a Multidisciplinary Team evaluation is initiated through the Special Services staff who will obtain the required parental permission for the evaluation. The psychologist along with other special Services personnel will conduct a full and individual evaluation for each child being considered for special services and related services. Triennial re-evaluations of students receiving Special Services are initiated by the students MDT or IEP team. The School Psychologist will participate in MDT meetings and parent conferences as needed. They will also coordinate a plan for the services to be performed at each school requesting School Psychological services from ESU 16. School Psychologists assist schools with data collection and interpretation at the SAT and MTSS level. Inservice training on effective Student Assistance Teams and data collection is also available.

Contracts for psychological services are based on the December 1st, resource teacher's roster, for the following year.

SPECIAL SERVICES

SPEECH/LANGUAGE PATHOLOGY

Contact Person:

Molly Walz, Director of Special Services

(308) 221-6235

ESU 16 employs Speech/Language Pathologists who are contracted to area schools to provide services designed to meet the needs of students with speech and language difficulties.

Speech Language Pathologists educate students with speech, language, and learning difficulties. They evaluate children ages birth to twenty-one who are referred for speech, language, stuttering, or voice assessment and make recommendations to area school personnel and parents. They develop educational plans and adjust curriculum to meet the students' special needs.

Services are provided in a direct and indirect model. Direct services are through individualized instruction or collaborative teaching in the regular classroom. Indirect services are delivered to students who qualify for speech-language services by working with regular classroom teachers, resource teachers, parents, and paraprofessionals to meet the student's individual needs. Evaluations are conducted for students, ages birth to twenty-one, referred for testing in the areas of speech, language, stuttering, and/or voice. Speech Language Pathologists assist school personnel and parents in developing an Individualized Education Plan addressing the students' communication and learning needs.

Contracts are based on the December 1st roster. Costs are based on a per student cost using a formula for rosters with more than 10 students.

SCHOOL SOCIAL WORKER

Contact Person:

Molly Walz, Director of Special Services

(308) 221-6235

Sara Gentry, School Social Worker

(308) 221-6351

Cassidy Eggers, School Social Worker Intern

(308)

The school social workers (SSW) are members of the ESU 16 mental health team. This team also includes ESU 16's school psychologists and LIMHPs. The SSWs work primarily with Tier 2 students and their families to: provide school level support, connect students & their families, the school district and community resources, and provide group therapies.

The SSWs are available to any ESU 16 district to provide trainings in suicide prevention, mandatory reporting, and trauma informed schools.

SPECIAL SERVICES

SPECIAL SERVICES PROGRAM SUPERVISION

Contact Person:

Molly Walz, Director of Special Services

(308) 221-6235

ESU 16 employs a full-time Director of Special Services who is responsible for assisting all school districts to comply with requirements of LB 403, LB 889, PL 94-142, and PL 99-457. The Director supervises and coordinates all special services available through ESU 16. Assistance is given to districts on referral placement, student progress, and transportation. The Improving Learning for Children with Disabilities Process required by the Nebraska Department of Education is coordinated and assisted.

The Director assists all schools in the fall with the completion of their Final Financial. Final Financial Reports are due on or before October 31 of each year. Under Rule 51 school districts have allowable and reimbursable costs for special services. Schools can get reimbursement for salaries of special services staff, fringe benefits, in-service costs, travel costs, transportation of students, instructional equipment, and supplies, contracted special services and the cost of acquisition, renovation and operation of a mobile unit used for delivery of special services. Districts are reimbursed from the State Department of Education in the following school fiscal year. A pro rata amount is determined by the State Board Education from appropriations for special services approved by the Legislature and based on allowable excess costs for all special services programs and support services. Students receiving Level I services are participating in a special services program for not more than three hours per week. Expenditures for Level I services are allowable excess costs. Level II students receive more than three hours per week. For students who are receiving more than three hours per week, the school district must pay that portion of the adjusted average per pupil cost for that portion of the instructional time. This cost is deducted from the special services program costs. School districts are reimbursed by the State Department of Education in seven equal payments beginning in December. The monies received will be kept by the local district and can be used to pay contracts or bills received for all special programs and services.

In the spring and summer, the Director assists districts with completion of the following reports:

1) MOE (Maintenance of Effort); (2) Policies & Procedures; (3) IDEA Grant Payment Submission; (4) Non-Public Worksheet; (5) IDEA Grant Submission for the next year. The Director also assists Districts with reviewing Special Services Performance Report and District Determination Notices.

School districts sign a cooperative agreement indicating the district's request for this service. School districts are billed for program supervision at the cost of 8% of each Special Services bill. School Districts with their own Director of Special Services are only charged 4% of the total bill for supervision of the ESU 16 staff.

SPECIAL SERVICES

TEACHER CONSULTANT

Contact Persons:

Molly Walz, Director of Special Services

(308) 221-6235

Denise Brauer, Teacher Consultant

(308) 534-2416

ESU 16 provides consultative services for district-owned special services staff. Regular appointments are scheduled by the school district personnel and the consultant. The consultants travel to the schools to assist in handling concerns, which arise from student IEP's, curriculum planning, caseload size, Student Assistance Teams, transition requirements, and Rule 51 compliance. Teacher Consultants assist school personnel and parents in developing an Individualized Education Plan, etc. Contracts for Teacher Consultant costs are divided equally among all school districts, based on the number of SPED teachers.

INCLUSION/TRANSITION CONSULTANT

Contact Persons:

Molly Walz, Director of Special Services

(308) 221-6235

Lou-Cox Fornander, Inclusion/Transition Consultant

(308) 221-6238

Megan Lantis, Inclusion/Transition Consultant

(308) 221-6278

This program assists school districts in providing, at the local school district site, services for students who have been verified moderate or severe/profound or multi-disabled. An Inclusion/Transition Consultant travels to the school district to assist paraprofessionals and classroom teachers in program planning for the IEP; conduct staffings; locate assistive devices; modify curriculum, and confer with parents. For vocational level students, this staff member will conduct community-based assessment and task analysis. (Occupational and Physical Therapy are also provided to students whose IEP team determines a need.)

The Inclusion/Transition Consultant is directly responsible for assisting with the transition plans for special needs students. These responsibilities may include program planning, coordination, monitoring, evaluating, educating, implementation, and public relations. The Inclusion/Transition Consultant is directly responsible to the Director of Special Services.

Job responsibilities include assisting resource teachers with the development of transition plans, coordinating career assessment for transition planning, consulting with the area agency personnel regarding services available, and working cooperatively with special services teachers, resource teachers, speech-language pathologists, guidance counselors, academic teachers, medical personnel, and administrative personnel to maximize available services to special needs students.

Contracts for Inclusion/Transition Services are based on total student enrollment for the district from the fall student count.

SPECIAL SERVICES

OPPORTUNITY WITH LIFE SKILLS PROGRAM

Contact Persons:

Molly Walz, Director of Special Services
Laurie Vak, Special Education Teacher

(308) 221-6235
(308) 568-9843

The Opportunity with Life Skills Program (OWLS) is an enriched transition program for High School students with intellectual disabilities, (age 16-21), located on the campus of Mid-Plains Community College in North Platte. The program is to prepare students for the workforce through academic, social skills, life skills, and vocational development. It also increases independence, self-determination, self-advocacy, lifelong learning, and linkage for adult services. Contracts for the OWLS program costs are divided equally among the students that are in the program.

LICENSED INDEPENDENT MENTAL HEALTH PRACTITIONER

Contact Persons:

Molly Walz, Director of Special Services
Gwen Bergstrom, Licensed Independent Mental Health Practitioner
Jamie Meismer, Licensed Independent Mental Health Practitioner

(308) 221-6235
(308) 221-6321
(308) 284-7507

ESU 16 provides a Licensed Independent Mental Health Practitioner (LIMHP) available to districts for counseling students with a mental health diagnosis. The LIMHP is responsible for evaluation, risk assessment and counseling to address students' needs socially and emotionally. Consultation is provided to educators, parents and other professionals to create safe, healthy and supportive learning environments for students.

Contracts for Mental Health services are based on total student enrollment for the district from the fall count.

SPECIAL SERVICES

DEAF EDUCATION

Contact Persons:

Molly Walz, Director of Special Services

(308) 221-6235

Darsha Pelland, Deaf Education Consultant

(308) 221-6349

The teacher of the deaf and hard of hearing will assist school districts with verification and accommodations for students who are deaf and hard of hearing. The teacher will assess the needs for a sign language interpreter and work with the interpreter in order to meet the needs of the student as needed. They will help the school in locating assistive technology equipment, classroom materials, and support the classroom teacher in evaluating its effectiveness.

The IEP team will determine if direct or consultative services are needed from the teacher of the deaf and hard of hearing. Direct services are through individualized instruction or collaborative teaching in the classroom. Consultative services include working with regular classroom teachers, resource teachers, parents, and paraprofessionals to meet the needs of the student.

When a hard of hearing child is placed on a 504 plan, the teacher of the deaf and hard of hearing may offer assistance in writing the plan, and suggest assistive technology or accommodations that can be made within the regular classroom setting. Contracts for Deaf Education are based on total student enrollment for the district from the fall student count.

AUDIOLOGY SERVICES

Contact Persons:

Molly Walz, Director of Special Services

(308) 221-6235

Dawn Schmitt, Audiologist

(308) 221-6237

ESU 16 provides an Audiologist to assist ESU 15 and ESU 16 and school districts with students who might have hearing concerns. The Audiologist is responsible for providing a comprehensive diagnostic testing in a soundproof booth. Consultation is provided to parents and teachers regarding the testing and the discussion of interventions that may include the use of assistive technology. The Audiologist will work with the ESU 16 Deaf Educator in coordinating the use of assistive technology devices such as auditory trainers and hearing aids.

Staff development and training will also be provided to school district nurses that perform the first level of hearing screenings with all children.

Contracts for Audiology Services are based on total student enrollment for the district from the fall student count.

SPECIAL SERVICES

EARLY CHILDHOOD PROGRAM

Contact Persons:

Molly Walz, Director of Special Services

(308) 221-6235

Jo Lee, Early Childhood Coordinator/Teacher

(308) 386-4867

ESU 16 will serve as the agency for the Regional Coordinated Plan as requested by the local school districts and approved by the ESU 16 Board. The ESU 16 Plan submitted to the State Board of Education included all school districts in the ESU 16 counties, except North Platte Public School, signing contracts requesting to be included in the Regional Plan.

Local school districts will attempt to identify children with disabilities who would benefit from services. Procedures for identification shall be as follows:

1. ESU 16 will provide news releases to all media.
2. School districts desiring to have additional news releases may distribute at their discretion.
3. All referrals to the local education agency will be followed up with the appropriate diagnostic service.

ESU 16 issues a contract to school districts with students in the program based on the December 1 roster. Costs are based on a per student cost. These costs include the Early Childhood Special Education Teacher, Speech Pathologist Diagnostic and Evaluation. Early Childhood Special Services programs are mandated for all school districts in LB 889, and ESU 16 will do everything possible to assist all school districts to keep in compliance with LB 889.

EARLY DEVELOPMENT NETWORK SERVICES COORDINATION

Contact Persons:

Molly Walz, Director of Special Services

(308) 221-6235

April Wilson, Service Coordinator

(308) 284-7524

Kaelyn Klaasmeyer, Service Coordinator

(308) 386-4867

ESU 16 received the contract with the Nebraska Department of Health & Human Services for Service Coordination. Service Coordination is the identification referral and coordination of services for children, birth through the age of two, and families. The Service Coordinator serves as the single point of contact in helping parents gain needed services and assistance.

This program is funded through the Department of Health & Human Services and is of no cost to the school districts.

SPECIAL SERVICES

SPECIAL SERVICES STAFF DEVELOPMENT

Contact Person:

Molly Walz, Director of Special Services

(308) 221-6235

ESU 16 takes part in the NDE Special Services Continuous Improvement Process. ESU 16 provides training to districts based on District determination needs and requests. Staff members are available to provide in-service and workshops on Special Services issues such as Student Assistance Team Training; Co-Teaching Methods; Severe Disability Models; Behavior; Classroom Management; IEP Compliance, Legislation, and Litigation. Schools may request training and consulting in any area of special services.

OCCUPATIONAL AND PHYSICAL THERAPY

Contact Person:

Molly Walz, Director of Special Services

(308) 221-6235

ESU 16 provides Occupational Therapists and a Physical Therapist to assist ESU 16 school districts with students who's IEP teams determined a need for OT or PT services for difficulty in the area of gross fine motor movements. Occupational Therapy & Physical Therapy services are currently provided to ESU 16 school districts through outside agencies that the ESU holds a contract with.

They evaluate children ages birth to twenty-one who are referred for motor difficulties. They make recommendations to area school personnel and parents and develop educational plans and adjust curriculum to meet the students' special needs.

Services are provided in a direct and indirect model. Direct services are through individualized instruction or collaborative teaching in the regular classroom. Indirect services are delivered to students who qualify for OT or PT services by working with the regular classroom teachers, resource teachers, parents and para professionals to meet the students' individual needs. Evaluations are conducted for students ages birth to twenty-one, referred for testing and Occupational Therapists and Physical Therapists assist school personnel and parents in developing an Individualized Education Plan addressing the students' motor concerns.

Contracts for OT and PT are based on total student enrollment for the district from the fall student count.

TEACHING & LEARNING

Contact Persons:

Alison Smith, Teaching & Learning Director	(308) 221-6289
Mackenzie Carstens, Teaching & Learning Coordinator	(308) 221-6298
Briana Hawks, Teaching & Learning Coordinator	(308)

The ESU 16 Teaching & Learning Team positively impacts student achievement by providing educational leadership and support to the faculty and administration in area schools. This team includes teaching, learning, and technology specialists who provide data- driven professional learning opportunities, on-going, focused support aligned to district priorities and coordinate the exchange of knowledge and skills among ESU 16 educators. The team also supports development and implementation of high- quality instructional resources to enhance curriculum and instruction. We also facilitate and complete state and federal grant development and submission.

The Teaching & Learning Team activities are responsive and proactive to the needs expressed by school districts and focus on the high priority topics as identified in district Continuous Improvement Plans.

The ESU 16 Teaching & Learning department provides district continuous training and support in a variety of areas including:

- Continuous Improvement
- Curriculum, Instruction & Assessment
- High Quality Instructional Materials Adoption and Implementation
- Leadership
- Classroom Management
- Content Area Instruction and Lesson Design
- Support for novice & veteran teachers
- Instructional Technology
- Classroom Coaching
- Data Analysis
- MTSS (Multi Tiered System of Support)

In addition to supporting those who serve school-age children, we also provide professional development services to professionals who provide daycare and pre-school services. A description of this program follows:

TEACHING & LEARNING

EARLY CHILDHOOD PROFESSIONAL DEVELOPMENT SERVICES

Contact Persons:

Deb Paulman, Administrator

(308) 284-7518

Cheryl Roche, Early Learning Connection Coordinator

(308) 284-7510

This program provides a full-time Early Learning Connection coordinator. The Early Learning Connection Partnership is designed to work in collaboration with state and regional entities, including the Early Childhood Training Center and Step Up to Quality, to ensure that professional development offerings enhance the skills of early childhood professionals and caregivers as outlined in *Nebraska's Core Competencies for Early Childhood Professionals and Nebraska's School-Age and Youth Development Core Competencies*.

The role of the coordinator is to provide:

- 1) leadership, coordination, and facilitation to expand development of a comprehensive, fully-integrated, regional system of early childhood professional development;
- 2) leadership in efforts to implement Nebraska's Core Competencies for Early Childhood Professionals and Nebraska's School-Age and Youth Development Core Competencies to: a) expand training delivery, b) support standards, c) increase collaboration, d) maximize resources, and e) increase public awareness;
- 3) leadership that articulates the significant relationships between professional development and the quality of early care and education; and
- 4) leadership for continued training and technical assistance to all persons working with children with disabilities (ages birth to five) and their families.

NETWORK OPERATIONS

Contact Persons:

Scott Jones, Network Operations Director	(308) 221-6226
Melissa Engel, Information Technology Coordinator	(308) 284-7513
Chad DeWester, Information Technology/Network Coordinator	(308) 284-7505
Todd Hatcher, Information Technology/DL Coordinator	(308) 221-6299

The primary goal of the Network Operations staff is to provide and support teaching and learning through the appropriate use of technology in the ESU 16 school districts. Staff promote responsible digital citizenship and provide information, consultation, evaluation, research, and training with a current focus on responsible social networking and Internet safety.

Over 9,000 K-12 teachers, administrators, school personnel, and students are provided Internet access and digital assistance by the ESU 16 Network Operations team. Successful online student and staff projects are continually implemented and service opportunities are available but not limited to the following: Google Applications for Education, learning management systems, student information systems, open educational resources, an online video delivery system, Erate assistance, and teleconferencing for meetings and classes.

ESU 16 provides a variety of online resources that can be easily accessed on its web page at: <https://www.esu16.org/page/media-technology>

DISTANCE EDUCATION

Contact Person:

Scott Jones, Network Operations Director	(308) 221-6226
--	----------------

The mission of the Southwest Nebraska Distance Learning Network is to bring the concept of “education opportunities for all” to reality by building, maintaining and fostering a virtual community of learners in rural Nebraska.

The Southwest Nebraska Distance Education Network (SNDEN) is a cooperative of public schools, colleges, and educational service units committed to the design, development, and delivery of two-way interactive learning opportunities for students in 37 rural communities. It covers over 20,000 square miles in an 18 county area of southwest, west-central, and the Sandhills of Nebraska.

The primary focus of the network is to provide greater access to learning opportunities through collaborations and partnerships with agencies and individuals committed to an equitable distribution of educational resources. Through the latest technology, the network enables students of all ages to improve their access to learning opportunities and to achieve their lifelong educational goals. SNDEN provides a description of its goals, resources, and schedules on its website located at <http://www.snden.org>.

BUSINESS SERVICES

COOPERATIVE PURCHASING

Contact Persons:

Deb Paulman, Administrator

(308) 284-7518

Michelle Walker, Administrative Assistant

(308) 284-7516

Cooperative Purchasing for instructional equipment is available through ESU 16. The Coop Purchasing program serves the public schools and community colleges within the geographic boundaries of the Unit. Purchasing has included everything from paper to computers and sports equipment to paper clips. Schools place orders in the spring and shipments arrive throughout the summer. [ESUCC Marketplace](#)

POLICY DEVELOPMENT, LEGISLATION, AND POLICY SERVICES

Contact Person:

Deb Paulman, Administrator

(308) 284-7518

ESU 16 will provide administrative assistance to local school boards and administrators. These services will be designed to provide support and information on policy development and State and Federal legislation. Board and administrative workshops will be provided as part of this assistance to schools based on legislative changes and case law.

TRAININGS

Contact Person:

Deb Paulman, Administrator

(308) 284-7518

ESU 16 provides several training opportunities for superintendents, non-certified staff, and board members. Training includes asbestos care and removal, wellness training, dispensing of medications, budget workshops, superintendent mentorship and board member workshops.

Requests for additional training may be made through the Advisory Council or by contacting the ESU 16 office directly.

NOTE:

On behalf of the Educational Service Unit 16 Board and Staff, we hope this summary of services will assist you in your understanding of programs available through ESU 16.

It is the intent of the ESU 16 Board to plan cooperatively with local districts in meeting the needs of students within the service unit area. It is also a goal of the Board to keep as many programs as possible under the control of local School Boards of Education.

The Educational Service Unit exists to provide services to local school districts in their attempt to meet the educational needs of their students. These needs are determined through direct communications with school districts and an advisory council or representatives from the schools within the service unit area. Success in developing programs to meet the needs of the school districts is dependent upon effective communications. We need to know how we are doing in meeting the needs of schools, and likewise, we need the cooperation of schools to make the programs work.

Deb Paulman
Administrator