

# Completed MEASURE A & MEASURE N Projects



# GENERAL OBLIGATION BOND ELECTIONS

## *Measures A & N Planned Projects – Central Elementary School Parking Lot*

### Description of Project

1. New parking lot to the south of the campus with separate entry and exit onto Archibald Avenue to ensure student and staff safety
2. New drop-off lanes
3. New student access points to the south of the campus aligned with new parking lot
4. Increase on-site parking to alleviate traffic
5. Work collaboratively with solar contractor to install solar photovoltaic arrays over parking area and the student pick-up and drop-off area

### Current Project Status

The Central Parking Lot project is complete. All lots are operational. The Marquee has been installed. Notice of Completion was approved by the Board and filed with the Recorder's office.



### Project Timelines:

Architect:

GO Architects

DSA Status:

Approved May 10, 2016

Project Status:

Complete

# GENERAL OBLIGATION BOND ELECTIONS

## Central Elementary School Parking Lot – Detailed Budget Breakdown

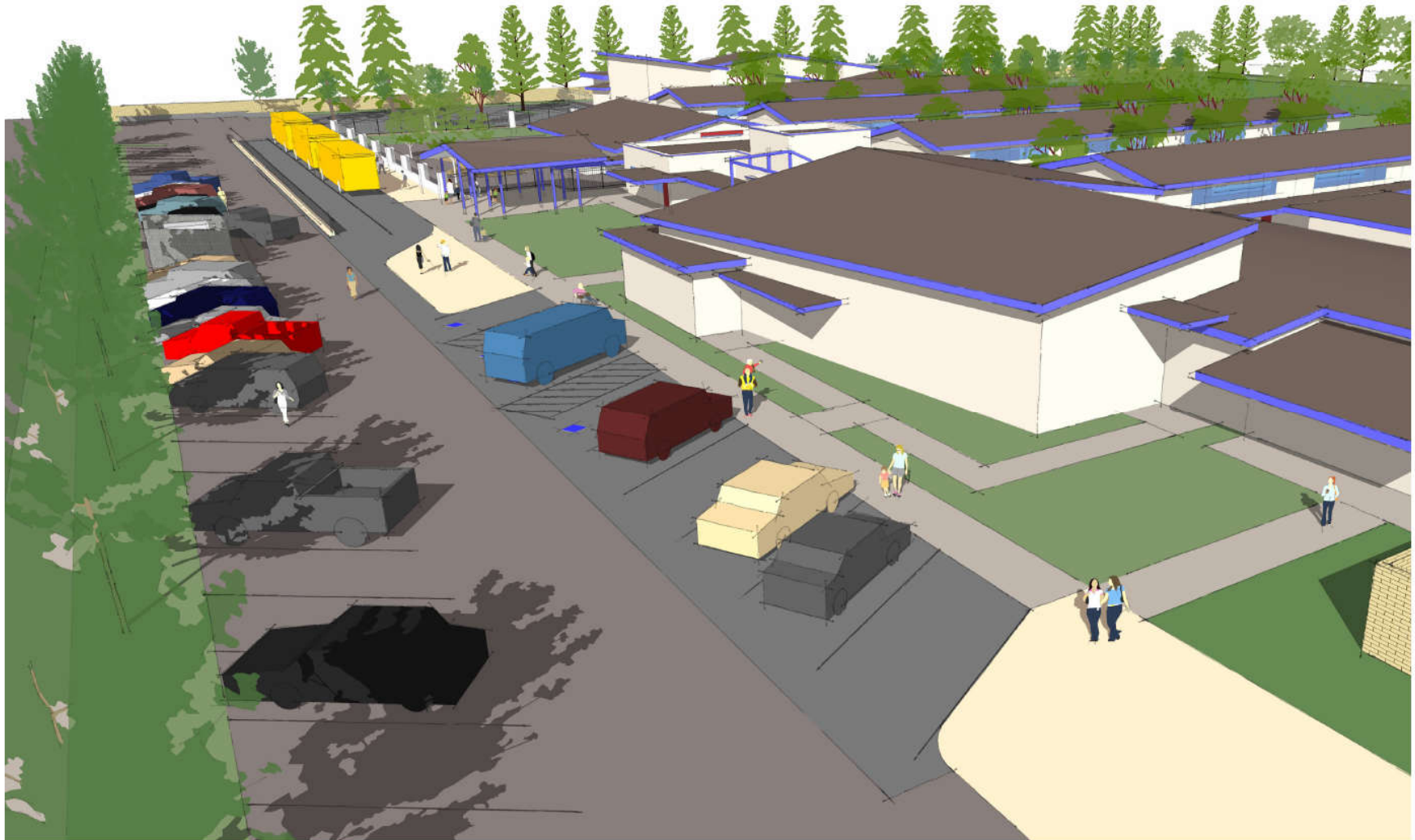
	Project Category Number	Cost Category	Estimated Project Budget *	Project Commitments to Date	Project Expenditures to Date	Remaining Budget to be Paid
	A	B	C	D	E	F (C - E)
<b>PLANNING &amp; DESIGN COSTS</b>						
	1	Architect & Engineering Costs	\$179,611.00	\$179,611.00	\$179,611.00	\$0.00
	2	DSA Fees	16,882.40	16,882.40	16,882.40	0.00
	3	Preliminary Tests	38,475.00	38,475.00	38,475.00	0.00
	4	Other Planning Costs	<u>25,183.14</u>	<u>25,183.14</u>	<u>25,183.14</u>	<u>0.00</u>
<b>Total Planning Costs:</b>			<b>\$260,151.54</b>	<b>\$260,151.54</b>	<b>\$260,151.54</b>	<b>\$0.00</b>
<b>CONSTRUCTION COSTS</b>						
	5	Construction & Other Construction Costs	\$1,210,423.27	\$1,210,423.27	\$1,210,423.27	\$0.00
	6	Construction Management	199,157.89	199,157.89	199,157.89	0.00
	7	Testing & Inspection	58,871.25	58,871.25	58,871.25	0.00
	8	Furniture & Equipment	43,391.08	43,391.08	43,391.08	0.00
	9	Project Contingency & Escalation	0.00	0.00	0.00	<u>0.00</u>
<b>Total Construction Costs:</b>			<b>\$1,511,843.49</b>	<b>\$1,511,843.49</b>	<b>\$1,511,843.49</b>	<b>\$0.00</b>
<b>COMBINED PROJECT BUDGET:</b>			<b>\$1,771,995.03</b>	<b>\$1,771,995.03</b>	<b>\$1,771,995.03</b>	<b>\$0.00</b>

\* Project is complete. Therefore, budget equals total commitments.

District Financial 5-17-2019

# GENERAL OBLIGATION BOND ELECTIONS

## *Central Elementary School Parking Lot – Project Progress Pictures & Renderings*





# GENERAL OBLIGATION BOND ELECTIONS

## *Central Elementary School Parking Lot – Completed Construction Pictures*



# GENERAL OBLIGATION BOND ELECTIONS

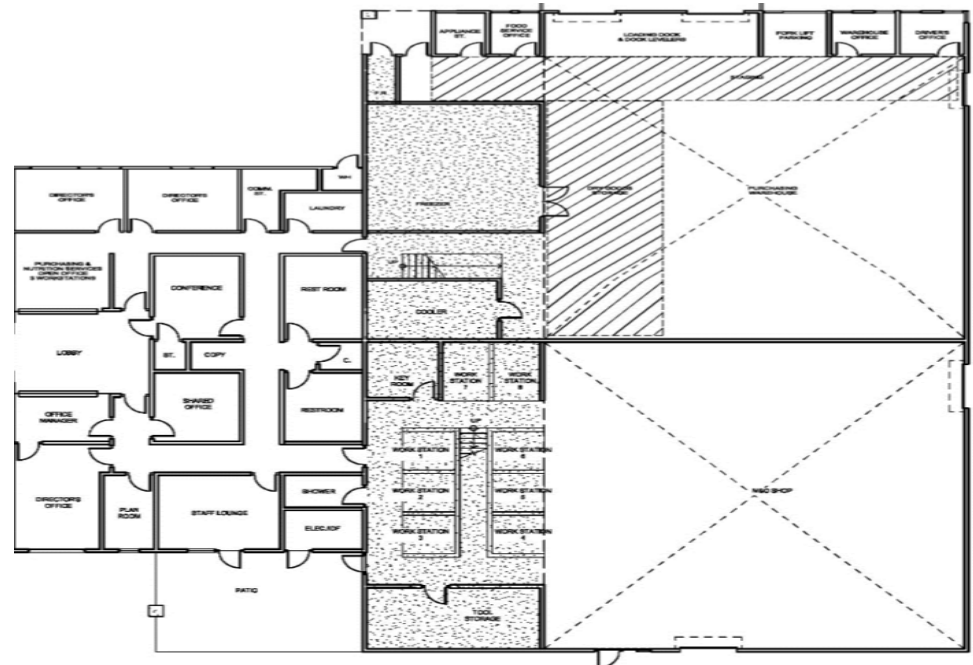
## Measures A & N Planned Projects – New Operations Center

### Description of Project

1. Necessary to relocate Maintenance & Operations, Food Services and Warehouse departments to accommodate new parking lot and pick-up and drop-off areas at Central Elementary School
2. Relocate Operations Center to the north field of Cucamonga Middle School
3. Reconfigure north field to accommodate site and community field needs
4. Construct Operations Center to blend in with existing buildings on Cucamonga Middle School campus

### Current Project Status

This project was completed in March of 2017. The following departments are housed at the new facility: maintenance and operations, purchasing, and food and nutrition services. The move was completed by April 12<sup>th</sup>.



### Project Timelines:

Architect:

GO Architects

DSA Status:

Approved September 2016

Construction Start Date:

Spring of 2017

Project Status:

Complete

# GENERAL OBLIGATION BOND ELECTIONS

## New Operations Center – Detailed Budget Breakdown From All Funding Sources

	Project Category Number	Cost Category	Estimated Project Budget *	Project Commitments to Date	Project Expenditures to Date	Remaining Budget to be Paid
	A	B	C	D	E	F (C - D)
<b>PLANNING &amp; DESIGN COSTS</b>						
	1	Architect & Engineering Costs	\$472,285.83	\$472,285.83	\$472,285.83	\$0.00
	2	DSA Fees	78,913.64	78,913.64	78,913.64	0.00
	3	Preliminary Tests	23,159.00	23,159.00	23,159.00	0.00
	4	Other Planning Costs	<u>102,083.20</u>	<u>102,083.20</u>	<u>102,083.20</u>	<u>0.00</u>
<b>Total Planning Costs:</b>			<b>\$676,441.67</b>	<b>\$676,441.67</b>	<b>\$676,441.67</b>	<b>\$0.00</b>
<b>CONSTRUCTION COSTS</b>						
	5	Construction & Other Construction Costs	\$6,790,539.86	\$6,790,539.86	\$6,790,539.86	\$0.00
	6	Construction Management	514,459.57	514,459.57	514,459.57	0.00
	7	Testing & Inspection	350,983.05	350,983.05	350,983.05	0.00
	8	Furniture & Equipment	21,989.67	21,989.67	21,989.67	0.00
	9	Project Contingency & Escalation	0.00	0.00	0.00	<u>0.00</u>
<b>Total Construction Costs:</b>			<b>\$7,677,972.15</b>	<b>\$7,677,972.15</b>	<b>\$7,677,972.15</b>	<b>\$0.00</b>
<b>COMBINED PROJECT BUDGET:</b>			<b>\$8,354,413.82</b>	<b>\$8,354,413.82</b>	<b>\$8,354,413.82</b>	<b>\$0.00</b>

\* Project is complete. Therefore, budget equals total commitments.

District Financial 8-19-2019

# GENERAL OBLIGATION BOND ELECTIONS

## *New Operations Center – Project Plan & Renderings*





# GENERAL OBLIGATION BOND ELECTIONS

## *New Operations Center – Project Pictures*

---



# GENERAL OBLIGATION BOND ELECTIONS

## *Measures A & N Planned Projects – Bear Gulch Administrative Office Renovation*

### Description of Project

1. Renovate Administration Building
2. Add new safety check points
3. Create new entry structure for safe school access
4. Expand existing building to add additional square footage to the building

### Current Project Status

The project was considered substantially complete by the end of November 2017. Staff moved into their new offices over the Winter break. Several Bond Oversight Committee Members were able to tour the new building in mid-January.



### Project Timelines:

Architect:

WLC Architects

DSA Status:

Approved

Estimated Construction Start Date:

Spring of 2017

Estimated Expected Completion Date:

Complete

# GENERAL OBLIGATION BOND ELECTIONS

## Bear Gulch Admin. Office Renovation – Budget Breakdown From All Funding Sources

	Project Category Number	Cost Category	Estimated Project Budget *	Project Commitments to Date	Project Expenditures to Date	Remaining Budget to be Paid
	A	B	C	D	E	F (C - D)
<b>PLANNING &amp; DESIGN COSTS</b>						
	1	Architect & Engineering Costs	\$279,637.94	\$279,637.94	\$279,637.94	\$0.00
	2	DSA Fees	27,462.04	27,462.04	27,462.04	0.00
	3	Preliminary Tests	6,358.00	6,358.00	6,358.00	0.00
	4	Other Planning Costs	<u>22,835.16</u>	<u>22,835.16</u>	<u>22,835.16</u>	<u>0.00</u>
<b>Total Planning Costs:</b>			<b>\$336,293.14</b>	<b>\$336,293.14</b>	<b>\$336,293.14</b>	<b>\$0.00</b>
<b>CONSTRUCTION COSTS</b>						
	5	Construction & Other Construction Costs	\$2,564,769.76	\$2,564,769.76	\$2,564,769.76	\$0.00
	6	Construction Management	285,626.94	285,626.94	285,626.94	0.00
	7	Testing & Inspection	126,373.75	126,373.75	126,373.75	0.00
	8	Furniture & Equipment	35,255.71	35,255.71	35,255.71	0.00
	9	Project Contingency & Escalation	0.00	0.00	0.00	<u>0.00</u>
<b>Total Construction Costs:</b>			<b>\$3,012,026.16</b>	<b>\$3,012,026.16</b>	<b>\$3,012,026.16</b>	<b>\$0.00</b>
<b>COMBINED PROJECT BUDGET:</b>			<b>\$3,348,319.30</b>	<b>\$3,348,319.30</b>	<b>\$3,348,319.30</b>	<b>\$0.00</b>

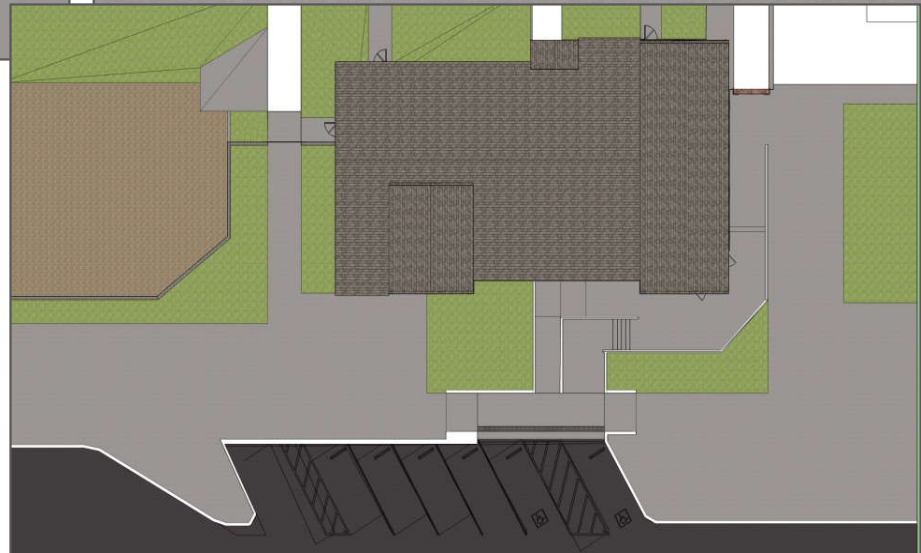
\* Project is complete. Therefore, budget equals total commitments.

District Financial 4-27-2022



# GENERAL OBLIGATION BOND ELECTIONS

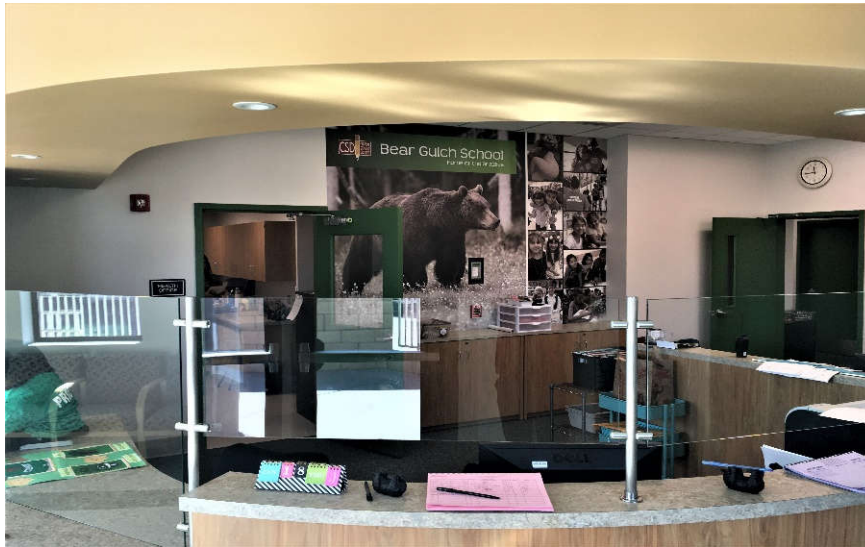
## *Bear Gulch Administrative Office Renovation – Project Renderings*





# GENERAL OBLIGATION BOND ELECTIONS

## *Bear Gulch Administrative Office Renovation – Completed Project Pictures*



# GENERAL OBLIGATION BOND ELECTIONS

## *Measures A & N Planned Projects – Doña Merced Administrative Office Renovation*

### Description of Project

1. New centralized entrance to school
2. Protected entry and waiting area
3. Enlarge health office and restroom
4. Add new safety check points and secure main building
5. Expand existing building to add additional square footage to the building

### Current Project Status

The project was considered substantially complete by mid-December 2017. Staff moved into their new offices over the Winter break. Several Bond Oversight Committee Members were able to tour the new building in mid-January.



### Project Timelines:

Architect:	WLC Architects
DSA Status:	Approved
Estimated Construction Start Date:	Spring of 2017
Estimated Expected Completion Date:	Complete

# GENERAL OBLIGATION BOND ELECTIONS

## Doña Merced Administrative Office Renovation – Detailed Budget Breakdown

	Project Category Number	Cost Category	Estimated Project Budget *	Project Commitments to Date	Project Expenditures to Date	Remaining Budget to be Paid
	A	B	C	D	E	F (C - D)
<b>PLANNING &amp; DESIGN COSTS</b>						
	1	Architect & Engineering Costs	\$360,461.26	\$360,461.26	\$360,461.26	\$0.00
	2	DSA Fees	42,156.17	42,156.17	42,156.17	0.00
	3	Preliminary Tests	2,758.00	2,758.00	2,758.00	0.00
	4	Other Planning Costs	<u>22,678.85</u>	<u>22,678.85</u>	<u>22,678.85</u>	<u>0.00</u>
<b>Total Planning Costs:</b>			<b>\$428,054.28</b>	<b>\$428,054.28</b>	<b>\$428,054.28</b>	<b>\$0.00</b>
<b>CONSTRUCTION COSTS</b>						
	5	Construction & Other Construction Costs	\$2,361,990.89	\$2,361,990.89	\$2,361,990.89	\$0.00
	6	Construction Management	288,359.48	288,359.48	288,359.48	0.00
	7	Testing & Inspection	134,112.25	134,112.25	134,112.25	0.00
	8	Furniture & Equipment	41,651.33	41,651.33	41,651.33	0.00
	9	Project Contingency & Escalation	0.00	0.00	0.00	<u>0.00</u>
<b>Total Construction Costs:</b>			<b>\$2,826,113.95</b>	<b>\$2,826,113.95</b>	<b>\$2,826,113.95</b>	<b>\$0.00</b>
<b>COMBINED PROJECT BUDGET:</b>			<b>\$3,254,168.23</b>	<b>\$3,254,168.23</b>	<b>\$3,254,168.23</b>	<b>\$0.00</b>

\* Project is complete. Therefore, budget equals total commitments.

District Financial 5-17-2019



# GENERAL OBLIGATION BOND ELECTIONS

## *Doña Merced Administrative Office Renovation - Project Renderings*





# GENERAL OBLIGATION BOND ELECTIONS

## *Doña Merced Administrative Office Renovation – Completed Project Pictures*

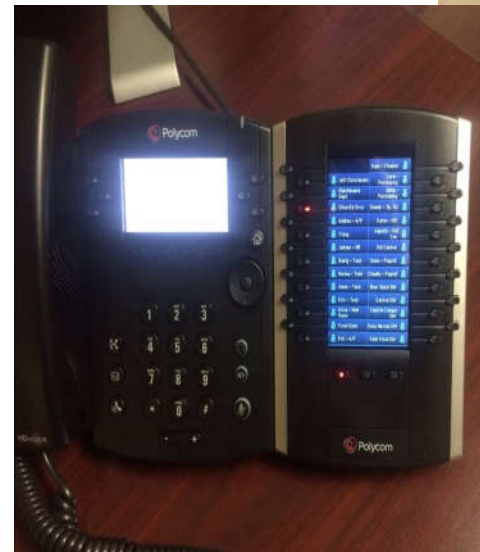


# GENERAL OBLIGATION BOND ELECTIONS

## *Measures A & N Planned Projects – District-Wide Communication System*

### Description of Project

1. Focus on safety, customer service and minimizing classroom disruptions
2. All classrooms can dial 911 – alert is sent to principal, office manager, health clerk, district nurse, Rusty, and Cabinet
3. All classrooms have speed dial button that rings every phone in the office for classroom emergencies not requiring 911
4. All phones can do an “all call” to every speaker phone at that site
5. Dial plans established with parents in mind, live person answers the phone, not an auto attendant
6. Attendance hotline established
7. Calls can be received after hours
8. Classroom disruptions are minimized by receiving outside calls only when transferred from the Office
9. Office can transfer calls directly to teacher’s voicemail during instructional time
10. Over 400 phones have been put in place and basic training has been provided to staff and teachers



# GENERAL OBLIGATION BOND ELECTIONS

## *New Phone System – Expenditure Summary by School Campus*

	School Project Name	Measure A & Measure N Encumbrances to Date	Measure A & Measure N Expenditures to Date	Remaining Encumbrance Balance (B + C)
	A	B	C	D
1	P-20-PHON - Central - New Phone Project	\$4,999.64	(\$4,999.64)	\$0.00
2	P-30-PHON - Valley Vista - New Phone Project	5,522.23	(5,522.23)	0.00
3	P-340-PHON - Cucamonga Middle School - New Phone Project	4,417.78	(4,417.78)	0.00
4	P-380-PHON - Ruth Musser Middle School - New Phone Project	6,044.81	(6,044.81)	0.00
5	P-50-PHON - Dona Merced Elementary - New Phone Project	5,522.23	(5,522.23)	0.00
6	P-60-PHON - Bear Gulch Elementary - New Phone Project	4,940.37	(4,940.37)	0.00
7	P-70-PHON - Coyote Canyon Elementary - New Phone Project	3,313.34	(3,313.34)	0.00
8	P-710-PHON - District Office - New Phone Project	1,104.21	(1,104.21)	0.00
	COMBINED TOTALS:	\$35,864.61	(\$35,864.61)	\$0.00



# 2008 GENERAL OBLIGATION BOND ELECTION

## *Bear Gulch Elementary School Completed Improvements from Measure A G.O. Bonds*

### Description of Projects

1. Removal of 7 portables located at the East side of the campus
2. Construction of a new classroom building with 14 new classrooms and new boys and girls restrooms
3. Replacement of old wiring with modern fiber-optic network to increase the speed and efficiency of learning education technology
4. Installation of security fencing to prevent unsupervised access to school
5. Replacement of old, unsafe playground and physical education equipment
6. Replacement of inefficient lighting and HVAC units for energy conservation and savings
7. 21<sup>st</sup> Century classroom support including teacher laptop and integrated video/audio projection system
8. Student information system upgrade for better tracking of students performance, attendance, and related issues





# 2008 GENERAL OBLIGATION BOND ELECTION

## *Central Elementary School Completed Improvements from Measure A G.O. Bonds*

### Description of Projects

1. Replacement of old wiring with modern fiber-optic network to increase the speed and efficiency of learning education technology
2. Installation of security fencing to prevent unsupervised access to school
3. Replacement of old, unsafe playground and physical education equipment
4. Replacement of inefficient lighting and HVAC units for energy conservation and savings
5. 21<sup>st</sup> Century classroom support including teacher laptop and integrated video/audio projection system
6. Student information system upgrade for better tracking of students performance, attendance, and related issues

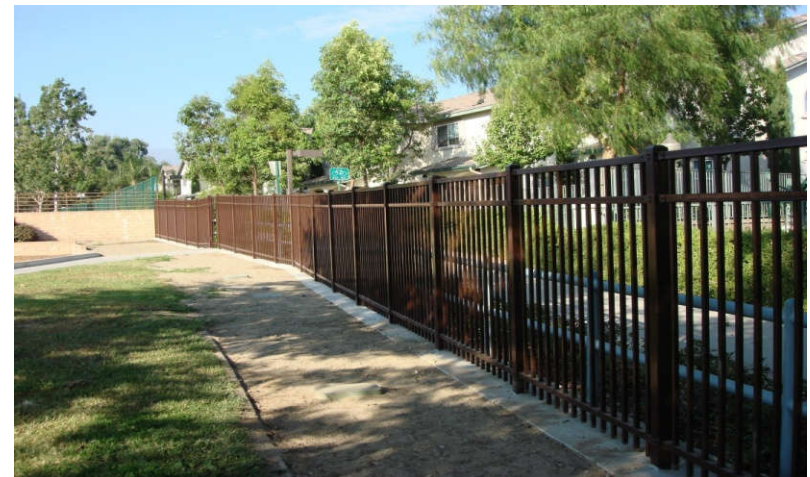


# 2008 GENERAL OBLIGATION BOND ELECTION

## *Coyote Canyon Elementary School Completed Improvements from Measure A G.O. Bonds*

### Description of Projects

1. Replacement of old wiring with modern fiber-optic network to increase the speed and efficiency of learning education technology
2. Installation of security fencing to prevent unsupervised access to school
3. Replacement of old, unsafe playground and physical education equipment
4. Replacement of inefficient lighting and HVAC units for energy conservation and savings
5. 21<sup>st</sup> Century classroom support including teacher laptop and integrated video/audio projection system
6. Student information system upgrade for better tracking of students performance, attendance, and related issues





# 2008 GENERAL OBLIGATION BOND ELECTION

## *Cucamonga Middle School Completed Improvements from Measure A G.O. Bonds*

### Description of Projects

1. Modernization of the older classroom wings
2. Renovation of the old locker rooms to create a new fitness center
3. Replacement of old wiring with modern fiber-optic network to increase the speed and efficiency of learning education technology
4. Installation of security fencing to prevent unsupervised access to school
5. Replacement of old, unsafe playground and physical education equipment
6. Replacement of inefficient lighting and HVAC units for energy conservation and savings
7. 21<sup>st</sup> Century classroom support including teacher laptop and integrated video/audio projection system
8. Student information system upgrade for better tracking of students performance, attendance, and related issues





# 2008 GENERAL OBLIGATION BOND ELECTION

## *Doña Merced Elementary School Completed Improvements from Measure A G.O. Bonds*

### Description of Projects

1. Replacement of old wiring with modern fiber-optic network to increase the speed and efficiency of learning education technology
2. Installation of security fencing to prevent unsupervised access to school
3. Replacement of old, unsafe playground and physical education equipment
4. Replacement of inefficient lighting and HVAC units for energy conservation and savings
5. 21<sup>st</sup> Century classroom support including teacher laptop and integrated video/audio projection system
6. Student information system upgrade for better tracking of students performance, attendance, and related issues



# 2008 GENERAL OBLIGATION BOND ELECTION

## *Ruth Musser Middle School Completed Improvements from Measure A G.O. Bonds*

### Description of Projects

1. Completion of the Ruth Musser fitness center
2. Replacement of old wiring with modern fiber-optic network to increase the speed and efficiency of learning education technology
3. Installation of security fencing to prevent unsupervised access to school
4. Replacement of old, unsafe playground and physical education equipment
5. Replacement of inefficient lighting and HVAC units for energy conservation and savings
6. 21<sup>st</sup> Century classroom support including teacher laptop and integrated video/audio projection system
7. Student information system upgrade for better tracking of students performance, attendance, and related issues





# 2008 GENERAL OBLIGATION BOND ELECTION

## *Valle Vista Elementary School Completed Improvements from Measure A G.O. Bonds*

### Description of Projects

1. Replacement of old wiring with modern fiber-optic network to increase the speed and efficiency of learning education technology
2. Installation of security fencing to prevent unsupervised access to school
3. Replacement of old, unsafe playground and physical education equipment
4. Replacement of inefficient lighting and HVAC units for energy conservation and savings
5. 21<sup>st</sup> Century classroom support including teacher laptop and integrated video/audio projection system
6. Student information system upgrade for better tracking of students' performance, attendance, and related issues





# GENERAL OBLIGATION BOND ELECTIONS

## *District-Wide Energy Efficiency Project*

### Description of Project

1. Replace interior and exterior lighting at all schools. Dimmer switches added to classroom lighting
2. Replace transformers at Coyote Canyon, Dona Merced Cucamonga Middle School and Ruth Musser Middle School
3. Replace HVAC units at all seven schools



### Current Project Status

The project is funded through Proposition 39, Clean Energy Jobs Act, Special Reserve for Capital Projects and GO Bonds. Trane US, Inc. was awarded the contract for the Proposition 39 portion of the project, which includes the District-wide lighting upgrade, transformer replacement and HVAC replacement at Coyote Canyon Elementary School and Ruth Musser Middle School. The lighting and transformers portion of the project was completed in August 2018.

The HVAC units at Ruth Musser Middle School were replaced at the beginning of the 2018/19 school year. HVAC units at Coyote Canyon were replaced during Spring Break 2019. Installation of the HVAC units at Valle Vista, Coyote Canyon and Doña Merced was completed over the Summer. The installation of the HVAC units at Bear Gulch, Central, and Cucamonga Middle School have been completed.

# GENERAL OBLIGATION BOND ELECTIONS

## *District-Wide Energy Efficiency Project – HVAC Pictures*



## MEASURE A & MEASURE N "COMPLETED" PROJECTS ENCUMBRANCE & EXPENDITURE BACKUP

Project: 000-0000 - District (CLOSED)				
Vendor	Encumbrance	Expenditure	Balance	Description
Bond Closing Costs	\$520,000.00	(\$520,000.00)	\$0.00	Bond Closing Costs
Central School District	\$10,940.01	(\$10,940.01)	\$0.00	Project Planning
State Board Of Equalization	\$401.49	(\$401.49)	\$0.00	Plan Check Fees
<b>Project Total:</b>	<b>\$531,341.50</b>	<b>(\$531,341.50)</b>	<b>\$0.00</b>	<b>000-0000 - District (CLOSED)</b>

Project: 020-ENRG - Central - Energy Conservation (CLOSED)				
Vendor	Encumbrance	Expenditure	Balance	Description
Russell Sigler Inc	\$4,043.26	(\$4,043.26)	\$0.00	HVAC
Trane U S Inc	\$148,353.88	(\$148,353.88)	\$0.00	HVAC
<b>Project Total:</b>	<b>\$152,397.14</b>	<b>(\$152,397.14)</b>	<b>\$0.00</b>	<b>020-ENRG - Central - Energy Conservation (CLOSED)</b>

Project: 020-FIBR - Central - Fiberoptic Networks (CLOSED)				
Vendor	Encumbrance	Expenditure	Balance	Description
Quanta Receivables (Sunesys)	\$73,007.11	(\$73,007.11)	\$0.00	Other Costs
Sunesys Llc	\$38,003.87	(\$38,003.87)	\$0.00	Technology Costs
<b>Project Total:</b>	<b>\$111,010.98</b>	<b>(\$111,010.98)</b>	<b>\$0.00</b>	<b>020-FIBR - Central - Fiberoptic Networks (CLOSED)</b>

Project: 020-FNCE - Central - Fence Project (CLOSED)				
Vendor	Encumbrance	Expenditure	Balance	Description
County Council	\$13.78	(\$13.78)	\$0.00	Project Planning
Harris Steel	\$103,853.41	(\$103,853.41)	\$0.00	Other Construction Costs
Inland Inspections	\$1,435.50	(\$1,435.50)	\$0.00	Inspection Costs
NTD Architecture Inc	\$6,680.73	(\$6,680.73)	\$0.00	Architect Fees
Neff Construction Inc	\$24,230.40	(\$24,230.40)	\$0.00	Construction Costs
<b>Project Total:</b>	<b>\$136,213.82</b>	<b>(\$136,213.82)</b>	<b>\$0.00</b>	<b>020-FNCE - Central - Fence Project (CLOSED)</b>

Project: 020-MDR2 - Central - Central Elementary School Parking Lot (CLOSED)				
Vendor	Encumbrance	Expenditure	Balance	Description
Ardent Environmental	\$2,600.00	(\$2,600.00)	\$0.00	Environmental Costs
Burgess Moving	\$6,816.50	(\$6,816.50)	\$0.00	Moving Costs
Byerly, John R.	\$49,986.25	(\$49,986.25)	\$0.00	Construction Testing
CDW Government	\$350.19	(\$350.19)	\$0.00	Technology Costs
California Dept. Of Education	\$602.00	(\$602.00)	\$0.00	Plan Check Fees



## MEASURE A & MEASURE N "COMPLETED" PROJECTS ENCUMBRANCE & EXPENDITURE BACKUP

Project: 020-MDR2 - Central - Central Elementary School Parking Lot (CLOSED)				
Vendor	Encumbrance	Expenditure	Balance	Description
City Of Rancho Cucamonga	\$14,999.00	(\$14,999.00)	\$0.00	Permits & Fees
County of San Bernardino Recorder	\$6.00	(\$6.00)	\$0.00	Agency Fees
Custom Signs Inc	\$14,986.50	(\$14,986.50)	\$0.00	Signage Costs
Daktronics	\$19,564.33	(\$19,564.33)	\$0.00	Technology Costs
Demo Unlimited Inc	\$154,565.00	(\$154,565.00)	\$0.00	Construction Costs
Division Of State Architect	\$16,280.40	(\$16,280.40)	\$0.00	Plan Check Fees
ESI Steel & Fabrication	\$450.00	(\$450.00)	\$0.00	Other Construction Costs
Epic Engineers	\$2,980.00	(\$2,980.00)	\$0.00	Engineering Costs
Ewing Irrigation	\$1,027.94	(\$1,027.94)	\$0.00	Landscaping Costs
Fischer Inc	\$67,408.00	(\$67,408.00)	\$0.00	Other Construction
Fusco Engineers	\$21,200.00	(\$21,200.00)	\$0.00	Engineering Costs
GO Architects Inc	\$179,611.00	(\$179,611.00)	\$0.00	Architect Fees
Hawthorne Lift Systems	\$7,090.08	(\$7,090.08)	\$0.00	Construction Equipment Rental
Inland Valley Daily Bulletin	\$3,072.68	(\$3,072.68)	\$0.00	Advertising
K A R Construction Inc	\$523,924.00	(\$523,924.00)	\$0.00	Construction Costs
Ledesma & Meyer	\$199,157.89	(\$199,157.89)	\$0.00	Construction Management
Mobile Mini Inc	\$523.80	(\$523.80)	\$0.00	Rentals, Leases & Repairs
Mobile Modular	\$1,310.26	(\$1,310.26)	\$0.00	Rentals, Leases & Repairs
Owen Electric Inc	\$3,830.06	(\$3,830.06)	\$0.00	Electrical Costs
Roadway Engineering	\$447,189.07	(\$447,189.07)	\$0.00	Engineering Costs
San Bernardino Clerk of the Board	\$50.00	(\$50.00)	\$0.00	Agency Fees
The Sun-Inland Valley Dail	\$7,174.08	(\$7,174.08)	\$0.00	Advertising
Time And Alarm Systems Inc	\$4,660.00	(\$4,660.00)	\$0.00	Security Costs
Tri Valley Inspections Inc	\$20,580.00	(\$20,580.00)	\$0.00	Inspection Costs
<b>Project Total:</b>	<b>\$1,771,995.03</b>	<b>(\$1,771,995.03)</b>	<b>\$0.00</b>	<b>020-MDR2 - Central - Central Elementary School Parking Lot (CLOSED)</b>
Project: 020-PLAY - Central - Playground Equipment (CLOSED)				
Vendor	Encumbrance	Expenditure	Balance	Description
Miracle Recreation	\$104,550.07	(\$104,550.07)	\$0.00	Furniture & Equipment
<b>Project Total:</b>	<b>\$104,550.07</b>	<b>(\$104,550.07)</b>	<b>\$0.00</b>	<b>020-PLAY - Central - Playground Equipment (CLOSED)</b>

## MEASURE A & MEASURE N "COMPLETED" PROJECTS ENCUMBRANCE & EXPENDITURE BACKUP

Project: 020-SAFE - Central - Safety & Security (CLOSED)				
Vendor	Encumbrance	Expenditure	Balance	Description
California Surveillance	\$1,738.69	(\$1,738.69)	\$0.00	Security
College Glass	\$1,322.00	(\$1,322.00)	\$0.00	Glass, Windows & Mirrors
Q-Star Technology	\$6,058.97	(\$6,058.97)	\$0.00	Technology Costs
<b>Project Total:</b>	<b>\$9,119.66</b>	<b>(\$9,119.66)</b>	<b>\$0.00</b>	<b>020-SAFE - Central - Safety &amp; Security (CLOSED)</b>
Project: 020-TECH - Central - Technology Updates (CLOSED)				
Vendor	Encumbrance	Expenditure	Balance	Description
CDW Government	\$121,692.70	(\$121,692.70)	\$0.00	Technology Costs
California Western Visuals	\$9,359.09	(\$9,359.09)	\$0.00	Technology Costs
Dell Marketing Lp	\$6,809.25	(\$6,809.25)	\$0.00	Technology Costs
GO Architects Inc	\$49,206.00	(\$49,206.00)	\$0.00	Architect Fees
GW Service Company	\$4,450.00	(\$4,450.00)	\$0.00	HVAC
Ledesma & Meyer	\$28,188.14	(\$28,188.14)	\$0.00	Construction Management
Monoprice	\$336.20	(\$336.20)	\$0.00	Technology Costs
Sunesys Llc	\$9,040.34	(\$9,040.34)	\$0.00	Technology Costs
Time And Alarm Systems Inc	\$233,470.09	(\$233,470.09)	\$0.00	Security Costs
<b>Project Total:</b>	<b>\$462,551.81</b>	<b>(\$462,551.81)</b>	<b>\$0.00</b>	<b>020-TECH - Central - Technology Updates (CLOSED)</b>
Project: 030-ENRG - Valle Vista - Energy Conservation (CLOSED)				
Vendor	Encumbrance	Expenditure	Balance	Description
Russell Sigler Inc	\$2,021.63	(\$2,021.63)	\$0.00	HVAC
Trane U S Inc	\$117,816.76	(\$117,816.76)	\$0.00	HVAC
<b>Project Total:</b>	<b>\$119,838.39</b>	<b>(\$119,838.39)</b>	<b>\$0.00</b>	<b>030-ENRG - Valle Vista - Energy Conservation (CLOSED)</b>
Project: 030-FIBR - Vallle Vista - Fiberoptic Networks (CLOSED)				
Vendor	Encumbrance	Expenditure	Balance	Description
Quanta Receivables (Sunesys)	\$73,007.10	(\$73,007.10)	\$0.00	Other Costs
Sunesys Llc	\$38,003.86	(\$38,003.86)	\$0.00	Technology Costs
<b>Project Total:</b>	<b>\$111,010.96</b>	<b>(\$111,010.96)</b>	<b>\$0.00</b>	<b>030-FIBR - Vallle Vista - Fiberoptic Networks (CLOSED)</b>
Project: 030-FNCE - Valle Vista - Fence Project (CLOSED)				
Vendor	Encumbrance	Expenditure	Balance	Description
County Council	\$7.60	(\$7.60)	\$0.00	Project Planning

## MEASURE A & MEASURE N "COMPLETED" PROJECTS ENCUMBRANCE & EXPENDITURE BACKUP

Project: 030-FNCE - Valle Vista - Fence Project (CLOSED)				
Vendor	Encumbrance	Expenditure	Balance	Description
Harris Steel	\$57,298.28	(\$57,298.28)	\$0.00	Other Construction Costs
Inland Inspections	\$792.00	(\$792.00)	\$0.00	Inspection Costs
NTD Architecture Inc	\$3,685.92	(\$3,685.92)	\$0.00	Architect Fees
Neff Construction Inc	\$13,368.50	(\$13,368.50)	\$0.00	Construction Costs
<b>Project Total:</b>	<b>\$75,152.30</b>	<b>(\$75,152.30)</b>	<b>\$0.00</b>	<b>030-FNCE - Valle Vista - Fence Project (CLOSED)</b>
Project: 030-MDR2 - Valle Vista - Modernization Phase II (CLOSED)				
Vendor	Encumbrance	Expenditure	Balance	Description
AAA Lead Consul. & Inspections Inc.	\$5,701.50	(\$5,701.50)	\$0.00	Consultant Costs
Ardent Environmental	\$22,990.00	(\$22,990.00)	\$0.00	Environmental Costs
Byerly, John R.	\$33,530.38	(\$33,530.38)	\$0.00	Construction Testing
CDW Government	\$74,335.58	(\$74,335.58)	\$0.00	Technology Costs
California Dept. Of Education	\$1,750.00	(\$1,750.00)	\$0.00	Plan Check Fees
California Republic Bank	\$425.73	(\$425.73)	\$0.00	Retention
Capital Protection	\$1,070.00	(\$1,070.00)	\$0.00	Security
Citizens Business Bank	\$245.48	(\$245.48)	\$0.00	Retention
Collaboration Solutions	\$3,754.23	(\$3,754.23)	\$0.00	Technology Costs
Construction Electric Co	\$370,977.27	(\$370,977.27)	\$0.00	Electrical Costs
Cuevas Fencing	\$15,013.00	(\$15,013.00)	\$0.00	Fencing Costs
Custom Signs Inc	\$14,960.75	(\$14,960.75)	\$0.00	Signage Costs
Daktronics	\$20,553.72	(\$20,553.72)	\$0.00	Technology Costs
Division Of State Architect	\$8,931.31	(\$8,931.31)	\$0.00	Plan Check Fees
E & R Glass Contractors Inc	\$419,726.00	(\$419,726.00)	\$0.00	Other Construction Costs
Elrod Fence Company	\$625.00	(\$625.00)	\$0.00	Fencing Costs
GO Architects Inc	\$284,187.04	(\$284,187.04)	\$0.00	Architect Fees
Intelliccept	\$1,511.40	(\$1,511.40)	\$0.00	Other Construction Costs
Jrh Construction Company I	\$1,574,994.00	(\$1,574,994.00)	\$0.00	Construction Costs
Ledesma & Meyer	\$301,589.86	(\$301,589.86)	\$0.00	Construction Management
Monoprice	\$294.33	(\$294.33)	\$0.00	Technology Costs
Mulvihill Enter	\$1,343.00	(\$1,343.00)	\$0.00	Other Construction Costs
Petersen Manufacturing	\$8,445.60	(\$8,445.60)	\$0.00	Furniture & Equipment
Pro-Craft Construction Inc	\$161,116.52	(\$161,116.52)	\$0.00	Construction Costs
San Bernardino Clerk of the Board	\$50.00	(\$50.00)	\$0.00	Agency Fees



## MEASURE A & MEASURE N "COMPLETED" PROJECTS ENCUMBRANCE & EXPENDITURE BACKUP

### Project: 030-MDR2 - Valle Vista - Modernization Phase II (CLOSED)

Vendor	Encumbrance	Expenditure	Balance	Description
The Sun-Inland Valley Dail	\$5,197.88	(\$5,197.88)	\$0.00	Advertising
Thompson Plumbing	\$3,972.29	(\$3,972.29)	\$0.00	Plumbing Costs
Tri Valley Inspections Inc	\$81,250.00	(\$81,250.00)	\$0.00	Inspection Costs
<b>Project Total:</b>	<b>\$3,418,541.87</b>	<b>(\$3,418,541.87)</b>	<b>\$0.00</b>	<b>030-MDR2 - Valle Vista - Modernization Phase II (CLOSED)</b>

### Project: 030-MDRN - Valle Vista - Modernization (CLOSED)

Vendor	Encumbrance	Expenditure	Balance	Description
AAA Lead Consul. & Inspections Inc.	\$1,371.20	(\$1,371.20)	\$0.00	Consultant Costs
Bond Closing Costs	(\$4,649.63)	\$4,649.63	\$0.00	Bond Closing Costs
Division Of State Architect	\$29,850.00	(\$29,850.00)	\$0.00	Plan Check Fees
Hamel Contracting Inc	\$53,431.56	(\$53,431.56)	\$0.00	Construction Costs
<b>Project Total:</b>	<b>\$80,003.13</b>	<b>(\$80,003.13)</b>	<b>\$0.00</b>	<b>030-MDRN - Valle Vista - Modernization (CLOSED)</b>

### Project: 030-PLAY - Valle Vista - Playground Equipment (CLOSED)

Vendor	Encumbrance	Expenditure	Balance	Description
Micon Construction	\$19,423.00	(\$19,423.00)	\$0.00	Construction Costs
Miracle Recreation	\$55,117.26	(\$55,117.26)	\$0.00	Furniture & Equipment
<b>Project Total:</b>	<b>\$74,540.26</b>	<b>(\$74,540.26)</b>	<b>\$0.00</b>	<b>030-PLAY - Valle Vista - Playground Equipment (CLOSED)</b>

### Project: 030-SAFE - Valle Vista - Safety & Security (CLOSED)

Vendor	Encumbrance	Expenditure	Balance	Description
College Glass	\$1,724.20	(\$1,724.20)	\$0.00	Glass, Windows & Mirrors
JMR Glass	\$4,180.44	(\$4,180.44)	\$0.00	Other Construction Costs
Q-Star Technology	\$6,058.96	(\$6,058.96)	\$0.00	Technology Costs
<b>Project Total:</b>	<b>\$11,963.60</b>	<b>(\$11,963.60)</b>	<b>\$0.00</b>	<b>030-SAFE - Valle Vista - Safety &amp; Security (CLOSED)</b>

### Project: 030-TECH - Valle Vista - Technology Updates (CLOSED)

Vendor	Encumbrance	Expenditure	Balance	Description
California Western Visuals	\$9,359.09	(\$9,359.09)	\$0.00	Technology Costs
Dell Marketing Lp	\$5,193.57	(\$5,193.57)	\$0.00	Technology Costs
<b>Project Total:</b>	<b>\$14,552.66</b>	<b>(\$14,552.66)</b>	<b>\$0.00</b>	<b>030-TECH - Valle Vista - Technology Updates (CLOSED)</b>

## MEASURE A & MEASURE N "COMPLETED" PROJECTS ENCUMBRANCE & EXPENDITURE BACKUP

Project: 050-ADMN - Dona Merced - Administrative Office Renovation (CLOSED)				
Vendor	Encumbrance	Expenditure	Balance	Description
AAA Lead Consul. & Inspections Inc.	\$1,183.00	(\$1,183.00)	\$0.00	Consultant Costs
American Fence Company	\$1,144.20	(\$1,144.20)	\$0.00	Fencing Costs
Apple Valley Communication	\$8,150.00	(\$8,150.00)	\$0.00	Technology Costs
Ardent Environmental	\$2,758.00	(\$2,758.00)	\$0.00	Environmental Costs
Best Contracting Services	\$169,952.00	(\$169,952.00)	\$0.00	Construction Costs
Blinds Etc	\$1,509.36	(\$1,509.36)	\$0.00	Furniture & Equipment
Brickley Environmental	\$4,850.00	(\$4,850.00)	\$0.00	Environmental Costs
Byerly, John R.	\$71,067.50	(\$71,067.50)	\$0.00	Construction Testing
California Dept. Of Education	\$1,409.95	(\$1,409.95)	\$0.00	Plan Check Fees
Caston, Inc.	\$334,861.00	(\$334,861.00)	\$0.00	Construction Costs
Continental Flooring, Inc.	\$18,997.01	(\$18,997.01)	\$0.00	Flooring Costs
David M Bertino Manufacturing	\$59,242.00	(\$59,242.00)	\$0.00	Cabinetry
Division Of State Architect	\$40,746.22	(\$40,746.22)	\$0.00	Plan Check Fees
E & R Glass Contractors Inc	\$70,368.00	(\$70,368.00)	\$0.00	Other Construction Costs
Econo Fence Inc	\$11,690.00	(\$11,690.00)	\$0.00	Fencing Costs
Fischer Inc	\$72,183.00	(\$72,183.00)	\$0.00	Other Construction
Golden State Bank	\$6,481.54	(\$6,481.54)	\$0.00	Retention
Inland Inspections	\$61,644.75	(\$61,644.75)	\$0.00	Inspection Costs
Inland Pacific Tile, Inc.	\$30,889.00	(\$30,889.00)	\$0.00	Flooring Costs
Inland Valley Bank	\$6,466.70	(\$6,466.70)	\$0.00	Retention
Inland Valley Daily Bulletin	\$2,783.16	(\$2,783.16)	\$0.00	Advertising
Ledesma & Meyer	\$360,908.64	(\$360,908.64)	\$0.00	Construction Management
Mike Cox Electric	\$268,031.30	(\$268,031.30)	\$0.00	Electrical Costs
Mobile Modular	\$45,388.69	(\$45,388.69)	\$0.00	Rentals, Leases & Repairs
Montgomery Hardware Company	\$5,791.51	(\$5,791.51)	\$0.00	Construction Costs
Office & Ergonomics	\$31,702.23	(\$31,702.23)	\$0.00	Office Supplies
Rosendin Electric	\$38,191.00	(\$38,191.00)	\$0.00	Electrical Costs
San Bernardino Clerk of the Board	\$50.00	(\$50.00)	\$0.00	Agency Fees
Simmons & Wood, Inc.	\$15,737.00	(\$15,737.00)	\$0.00	Construction Costs
Southcoast Acoustical Interiors, Inc.	\$32,048.00	(\$32,048.00)	\$0.00	Other Construction
Spec Construction Co., Inc.	\$961,401.00	(\$961,401.00)	\$0.00	Construction Costs
Tri Valley Inspections Inc	\$1,400.00	(\$1,400.00)	\$0.00	Inspection Costs

## MEASURE A & MEASURE N "COMPLETED" PROJECTS ENCUMBRANCE & EXPENDITURE BACKUP

Project: 050-ADMN - Dona Merced - Administrative Office Renovation (CLOSED)				
Vendor	Encumbrance	Expenditure	Balance	Description
Vasquez Construction	\$13,525.16	(\$13,525.16)	\$0.00	Construction Costs
WLC Architects Inc	\$360,461.26	(\$360,461.26)	\$0.00	Architect Fees
West Tech Mechanical Inc	\$136,998.46	(\$136,998.46)	\$0.00	Construction Costs
<b>Project Total:</b>	<b>\$3,250,010.64</b>	<b>(\$3,250,010.64)</b>	<b>\$0.00</b>	<b>050-ADMN - Dona Merced - Administrative Office Renovation (CLOSED)</b>
Project: 050-ENRG - Dona Merced Elementary - Energy Conservation (CLOSED)				
Vendor	Encumbrance	Expenditure	Balance	Description
J T Inspections Inc	\$1,870.00	(\$1,870.00)	\$0.00	Inspection Costs
Russell Sigler Inc	\$2,021.63	(\$2,021.63)	\$0.00	HVAC
Trane U S Inc	\$627,136.04	(\$627,136.04)	\$0.00	HVAC
<b>Project Total:</b>	<b>\$631,027.67</b>	<b>(\$631,027.67)</b>	<b>\$0.00</b>	<b>050-ENRG - Dona Merced Elementary - Energy Conservation (CLOSED)</b>
Project: 050-FIBR - Dona Merced Elementary - Fiberoptic Network (CLOSED)				
Vendor	Encumbrance	Expenditure	Balance	Description
Quanta Receivables (Sunesys)	\$73,007.10	(\$73,007.10)	\$0.00	Other Costs
Sunesys LLC	\$38,003.86	(\$38,003.86)	\$0.00	Technology Costs
<b>Project Total:</b>	<b>\$111,010.96</b>	<b>(\$111,010.96)</b>	<b>\$0.00</b>	<b>050-FIBR - Dona Merced Elementary - Fiberoptic Network (CLOSED)</b>
Project: 050-PLAY - Dona Merced Elementary - Playground Equipment (CLOSED)				
Vendor	Encumbrance	Expenditure	Balance	Description
Miracle Recreation	\$33,887.43	(\$33,887.43)	\$0.00	Furniture & Equipment
<b>Project Total:</b>	<b>\$33,887.43</b>	<b>(\$33,887.43)</b>	<b>\$0.00</b>	<b>050-PLAY - Dona Merced Elementary - Playground Equipment (CLOSED)</b>
Project: 050-SAFE - Dona Merced Elementary - Safety & Security (CLOSED)				
Vendor	Encumbrance	Expenditure	Balance	Description
College Glass	\$862.10	(\$862.10)	\$0.00	Glass, Windows & Mirrors
JMR Glass	\$4,180.44	(\$4,180.44)	\$0.00	Other Construction Costs
Q-Star Technology	\$6,058.97	(\$6,058.97)	\$0.00	Technology Costs
<b>Project Total:</b>	<b>\$11,101.51</b>	<b>(\$11,101.51)</b>	<b>\$0.00</b>	<b>050-SAFE - Dona Merced Elementary - Safety &amp; Security (CLOSED)</b>
Project: 050-TECH - Dona Merced Elementary - Technology Updates (CLOSED)				
Vendor	Encumbrance	Expenditure	Balance	Description
CDW Government	\$79,356.07	(\$79,356.07)	\$0.00	Technology Costs
California Western Visuals	\$19,270.78	(\$19,270.78)	\$0.00	Technology Costs



## MEASURE A & MEASURE N "COMPLETED" PROJECTS ENCUMBRANCE & EXPENDITURE BACKUP

Project: 050-TECH - Dona Merced Elementary - Technology Updates (CLOSED)				
Vendor	Encumbrance	Expenditure	Balance	Description
Dell Marketing Lp	\$5,193.57	(\$5,193.57)	\$0.00	Technology Costs
Ledesma & Meyer	\$17,439.45	(\$17,439.45)	\$0.00	Construction Management
Monoprice	\$294.33	(\$294.33)	\$0.00	Technology Costs
Sunesys Llc	\$9,692.33	(\$9,692.33)	\$0.00	Technology Costs
Three D Service Company In	\$7,950.00	(\$7,950.00)	\$0.00	Rentals, Leases & Repairs
Time And Alarm Systems Inc	\$228,347.28	(\$228,347.28)	\$0.00	Security Costs
WLC Architects Inc	\$60,000.00	(\$60,000.00)	\$0.00	Architect Fees
<b>Project Total:</b>	<b>\$427,543.81</b>	<b>(\$427,543.81)</b>	<b>\$0.00</b>	<b>050-TECH - Dona Merced Elementary - Technology Updates (CLOSED)</b>
Project: 060-ADMN - Bear Gulch - Administrative Office Renovation (CLOSED)				
Vendor	Encumbrance	Expenditure	Balance	Description
AAA Lead Consul. & Inspections Inc.	\$1,882.00	(\$1,882.00)	\$0.00	Consultant Costs
Acp Direct	\$481.58	(\$481.58)	\$0.00	Furniture & Equipment
American Fence Company	\$9,806.37	(\$9,806.37)	\$0.00	Fencing Costs
Apple Valley Communication	\$4,892.08	(\$4,892.08)	\$0.00	Technology Costs
Ardent Environmental	\$2,758.00	(\$2,758.00)	\$0.00	Environmental Costs
Best Buy Education	\$659.85	(\$659.85)	\$0.00	Furniture & Equipment
Best Contracting Services	\$130,341.00	(\$130,341.00)	\$0.00	Construction Costs
Blinds Etc	\$2,702.88	(\$2,702.88)	\$0.00	Furniture & Equipment
Brickley Environmental	\$18,120.00	(\$18,120.00)	\$0.00	Environmental Costs
Byerly, John R.	\$46,280.00	(\$46,280.00)	\$0.00	Construction Testing
CA Geological Survey School Review Unit	\$3,600.00	(\$3,600.00)	\$0.00	Environmental Costs
California Dept. Of Education	\$1,307.89	(\$1,307.89)	\$0.00	Plan Check Fees
Caston, Inc.	\$181,300.00	(\$181,300.00)	\$0.00	Construction Costs
Continental Flooring, Inc.	\$18,553.99	(\$18,553.99)	\$0.00	Flooring Costs
Cucamonga Plumbing Co	\$9,948.00	(\$9,948.00)	\$0.00	Plumbing Costs
David M Bertino Manufacturing	\$60,880.00	(\$60,880.00)	\$0.00	Cabinetry
Division Of State Architect	\$26,154.15	(\$26,154.15)	\$0.00	Plan Check Fees
E & R Glass Contractors Inc	\$48,739.00	(\$48,739.00)	\$0.00	Other Construction Costs
Econo Fence Inc	\$3,300.00	(\$3,300.00)	\$0.00	Fencing Costs
Fischer Inc	\$170,636.00	(\$170,636.00)	\$0.00	Other Construction
Golden State Bank	\$7,436.20	(\$7,436.20)	\$0.00	Retention
Inland Inspections	\$80,093.75	(\$80,093.75)	\$0.00	Inspection Costs

## MEASURE A & MEASURE N "COMPLETED" PROJECTS ENCUMBRANCE & EXPENDITURE BACKUP

### Project: 060-ADMN - Bear Gulch - Administrative Office Renovation (CLOSED)

Vendor	Encumbrance	Expenditure	Balance	Description
Inland Pacific Tile, Inc.	\$19,890.00	(\$19,890.00)	\$0.00	Flooring Costs
Inland Valley Bank	\$10,247.00	(\$10,247.00)	\$0.00	Retention
Inland Valley Daily Bulletin	\$2,783.16	(\$2,783.16)	\$0.00	Advertising
K & Z Cabinet Company	\$3,306.00	(\$3,306.00)	\$0.00	Cabinetry
Ledesma & Meyer	\$364,624.23	(\$364,624.23)	\$0.00	Construction Management
Mike Cox Electric	\$302,396.00	(\$302,396.00)	\$0.00	Electrical Costs
Montgomery Hardware Company	\$7,911.54	(\$7,911.54)	\$0.00	Construction Costs
Office & Ergonomics	\$25,205.84	(\$25,205.84)	\$0.00	Office Supplies
Pacific Mobile Structures	\$93,006.58	(\$93,006.58)	\$0.00	Rentals, Leases & Repairs
Power Plus	\$7,520.00	(\$7,520.00)	\$0.00	Other Construction Costs
San Bernardino Clerk of the Board	\$50.00	(\$50.00)	\$0.00	Agency Fees
Simmons & Wood, Inc.	\$20,519.00	(\$20,519.00)	\$0.00	Construction Costs
Single Source C	\$10,680.00	(\$10,680.00)	\$0.00	Site Construction
Southcoast Acoustical Interiors, Inc.	\$22,352.00	(\$22,352.00)	\$0.00	Other Construction
Spec Construction Co., Inc.	\$1,141,505.00	(\$1,141,505.00)	\$0.00	Construction Costs
Time And Alarm Systems Inc	\$9,920.00	(\$9,920.00)	\$0.00	Security Costs
Valley Pipeline	\$14,950.00	(\$14,950.00)	\$0.00	Other Construction
Virco Inc	\$996.90	(\$996.90)	\$0.00	Furniture & Equipment
WLC Architects Inc	\$279,637.94	(\$279,637.94)	\$0.00	Architect Fees
West Tech Mechanical Inc	\$159,139.81	(\$159,139.81)	\$0.00	Construction Costs
<b>Project Total:</b>	<b>\$3,326,513.74</b>	<b>(\$3,326,513.74)</b>	<b>\$0.00</b>	<b>060-ADMN - Bear Gulch - Administrative Office Renovation (CLOSED)</b>

### Project: 060-BLDG - Bear Gulch Elementary - New Two Story Building (CLOSED)

Vendor	Encumbrance	Expenditure	Balance	Description
AAA Lead Consul. & Inspections Inc.	\$1,430.00	(\$1,430.00)	\$0.00	Consultant Costs
ASR Constructors Inc	\$350,960.78	(\$350,960.78)	\$0.00	Construction Costs
Alma Construction Company	\$285,571.25	(\$285,571.25)	\$0.00	Construction Costs
Arrowhead Mechanical Inc	\$478,625.62	(\$478,625.62)	\$0.00	HVAC
Bell Roof Company Inc	\$65,212.00	(\$65,212.00)	\$0.00	Roofing Costs
Bond Closing Costs	\$47.50	(\$47.50)	\$0.00	Bond Closing Costs
Brickley Environmental	\$4,735.00	(\$4,735.00)	\$0.00	Environmental Costs
CA Geological Survey School Review Unit	\$3,600.00	(\$3,600.00)	\$0.00	Environmental Costs

## MEASURE A & MEASURE N "COMPLETED" PROJECTS ENCUMBRANCE & EXPENDITURE BACKUP

### Project: 060-BLDG - Bear Gulch Elementary - New Two Story Building (CLOSED)

Vendor	Encumbrance	Expenditure	Balance	Description
California Dept. Of Education	\$2,800.00	(\$2,800.00)	\$0.00	Plan Check Fees
California Surveillance	\$10,698.62	(\$10,698.62)	\$0.00	Security
Cen-Cal Heavy Moving Inc	\$15,000.00	(\$15,000.00)	\$0.00	Moving Costs
Century Paving	\$5,300.00	(\$5,300.00)	\$0.00	Paving Costs
Colors On Concrete	\$4,125.00	(\$4,125.00)	\$0.00	Paving Costs
Contrax Furnishings	\$94,017.62	(\$94,017.62)	\$0.00	Furniture & Equipment
Cucamonga Valley Water Dis	\$68,303.49	(\$68,303.49)	\$0.00	Utility Costs
Culver Newlin	\$3,969.67	(\$3,969.67)	\$0.00	Furniture & Equipment
Desert Commercial Bank	\$269.75	(\$269.75)	\$0.00	Retention
Division Of State Architect	\$29,800.00	(\$29,800.00)	\$0.00	Plan Check Fees
Fedex	\$27.45	(\$27.45)	\$0.00	Mailing Costs
Fence Craft of Upland Inc	\$5,580.19	(\$5,580.19)	\$0.00	Fencing Costs
Fence Specialties Inc	\$8,227.76	(\$8,227.76)	\$0.00	Fencing Costs
General Environmental Mgmt	\$3,025.00	(\$3,025.00)	\$0.00	Environmental Costs
Infinity Structures Inc	\$574,335.17	(\$574,335.17)	\$0.00	Construction Costs
Inland Building Const.	\$1,012,019.00	(\$1,012,019.00)	\$0.00	Construction Costs
Integrity Door	\$6,652.52	(\$6,652.52)	\$0.00	Other Construction Costs
K A R Construction Inc	\$1,031,521.61	(\$1,031,521.61)	\$0.00	Construction Costs
KCB Towers Inc	\$395,246.94	(\$395,246.94)	\$0.00	Construction Costs
KCH Corporation	\$200,060.00	(\$200,060.00)	\$0.00	Inspection Costs
Kincaid Industries Inc	\$612,217.80	(\$612,217.80)	\$0.00	Construction Costs
Leighton Consulting Inc	\$167,885.99	(\$167,885.99)	\$0.00	Consultant Costs
Mijac Alarm Systems Inc	\$3,140.00	(\$3,140.00)	\$0.00	Security Costs
Mobile Modular	\$83,751.00	(\$83,751.00)	\$0.00	Rentals, Leases & Repairs
Montgomery Hardware Company	\$106,255.00	(\$106,255.00)	\$0.00	Construction Costs
NTD Architecture Inc	\$661,541.83	(\$661,541.83)	\$0.00	Architect Fees
Neff Construction Inc	\$822,663.89	(\$822,663.89)	\$0.00	Construction Costs
Nekota Power Inc	\$723,868.67	(\$723,868.67)	\$0.00	Other Construction - Electrician
Owen Electric Inc	\$1,600.14	(\$1,600.14)	\$0.00	Electrical Costs
Portable Storage Corp	\$3,915.00	(\$3,915.00)	\$0.00	Rentals, Leases & Repairs
Reliable Delivery Service	\$495.00	(\$495.00)	\$0.00	Courier Service



## MEASURE A & MEASURE N "COMPLETED" PROJECTS ENCUMBRANCE & EXPENDITURE BACKUP

Project: 060-BLDG - Bear Gulch Elementary - New Two Story Building (CLOSED)				
Vendor	Encumbrance	Expenditure	Balance	Description
Robert Wada & Assoc Inc	\$9,800.00	(\$9,800.00)	\$0.00	Other Construction
Signs And Lucite Products	\$4,141.10	(\$4,141.10)	\$0.00	Signage Costs
Sports Facilities Group In	\$9,150.00	(\$9,150.00)	\$0.00	Sports Equipment
State Water Resources Cont	\$1,242.00	(\$1,242.00)	\$0.00	Utility Costs
The Sign Shop	\$2,497.64	(\$2,497.64)	\$0.00	Signage Costs
<b>Project Total:</b>	<b>\$7,875,327.00</b>	<b>(\$7,875,327.00)</b>	<b>\$0.00</b>	<b>060-BLDG - Bear Gulch Elementary - New Two Story Building (CLOSED)</b>
Project: 060-ENRG - Bear Gulch - Energy Conservation (CLOSED)				
Vendor	Encumbrance	Expenditure	Balance	Description
Russell Sigler Inc	\$1,516.22	(\$1,516.22)	\$0.00	HVAC
Trane U S Inc	\$177,947.10	(\$177,947.10)	\$0.00	HVAC
<b>Project Total:</b>	<b>\$179,463.32</b>	<b>(\$179,463.32)</b>	<b>\$0.00</b>	<b>060-ENRG - Bear Gulch - Energy Conservation (CLOSED)</b>
Project: 060-FIBR - Bear Gulch Elementary - Fiberoptic Network (CLOSED)				
Vendor	Encumbrance	Expenditure	Balance	Description
Quanta Receivables (Sunesys)	\$73,007.09	(\$73,007.09)	\$0.00	Other Costs
Sunesys Llc	\$38,003.85	(\$38,003.85)	\$0.00	Technology Costs
<b>Project Total:</b>	<b>\$111,010.94</b>	<b>(\$111,010.94)</b>	<b>\$0.00</b>	<b>060-FIBR - Bear Gulch Elementary - Fiberoptic Network (CLOSED)</b>
Project: 060-FNCE - Bear Gulch Elementary - Fence Project (CLOSED)				
Vendor	Encumbrance	Expenditure	Balance	Description
County Council	\$8.08	(\$8.08)	\$0.00	Project Planning
Harris Steel	\$60,878.58	(\$60,878.58)	\$0.00	Other Construction Costs
Inland Inspections	\$841.50	(\$841.50)	\$0.00	Inspection Costs
NTD Architecture Inc	\$3,916.29	(\$3,916.29)	\$0.00	Architect Fees
Neff Construction Inc	\$14,204.03	(\$14,204.03)	\$0.00	Construction Costs
<b>Project Total:</b>	<b>\$79,848.48</b>	<b>(\$79,848.48)</b>	<b>\$0.00</b>	<b>060-FNCE - Bear Gulch Elementary - Fence Project (CLOSED)</b>
Project: 060-PLAY - Bear Gulch Elementary - Playground Equipment (CLOSED)				
Vendor	Encumbrance	Expenditure	Balance	Description
Miracle Recreation	\$105,720.72	(\$105,720.72)	\$0.00	Furniture & Equipment
<b>Project Total:</b>	<b>\$105,720.72</b>	<b>(\$105,720.72)</b>	<b>\$0.00</b>	<b>060-PLAY - Bear Gulch Elementary - Playground Equipment (CLOSED)</b>

## MEASURE A & MEASURE N "COMPLETED" PROJECTS ENCUMBRANCE & EXPENDITURE BACKUP

Project: 060-SAFE - Bear Gulch Elementary - Safety & Security (CLOSED)				
Vendor	Encumbrance	Expenditure	Balance	Description
Q-Star Technology	\$6,058.97	(\$6,058.97)	\$0.00	Technology Costs
<b>Project Total:</b>	<b>\$6,058.97</b>	<b>(\$6,058.97)</b>	<b>\$0.00</b>	<b>060-SAFE - Bear Gulch Elementary - Safety &amp; Security (CLOSED)</b>
Project: 060-TECH - Bear Gulch Elementary - Technology Updates (CLOSED)				
Vendor	Encumbrance	Expenditure	Balance	Description
CDW Government	\$81,307.90	(\$81,307.90)	\$0.00	Technology Costs
California Western Visuals	\$9,359.09	(\$9,359.09)	\$0.00	Technology Costs
Dell Marketing Lp	\$5,291.59	(\$5,291.59)	\$0.00	Technology Costs
Ledesma & Meyer	\$16,585.67	(\$16,585.67)	\$0.00	Construction Management
Monoprice	\$294.33	(\$294.33)	\$0.00	Technology Costs
Sunesys Llc	\$6,137.33	(\$6,137.33)	\$0.00	Technology Costs
Time And Alarm Systems Inc	\$202,712.69	(\$202,712.69)	\$0.00	Security Costs
WLC Architects Inc	\$60,000.00	(\$60,000.00)	\$0.00	Architect Fees
<b>Project Total:</b>	<b>\$381,688.60</b>	<b>(\$381,688.60)</b>	<b>\$0.00</b>	<b>060-TECH - Bear Gulch Elementary - Technology Updates (CLOSED)</b>
Project: 070-ENRG - Coyote Canyon Elementary - Energy Conservation (CLOSED)				
Vendor	Encumbrance	Expenditure	Balance	Description
Russell Sigler Inc	\$7,918.05	(\$7,918.05)	\$0.00	HVAC
Trane U S Inc	\$330,357.89	(\$330,357.89)	\$0.00	HVAC
<b>Project Total:</b>	<b>\$338,275.94</b>	<b>(\$338,275.94)</b>	<b>\$0.00</b>	<b>070-ENRG - Coyote Canyon Elementary - Energy Conservation (CLOSED)</b>
Project: 070-FIBR - Coyote Canyon Elementary - Fiberoptic Network (CLOSED)				
Vendor	Encumbrance	Expenditure	Balance	Description
Quanta Receivables (Sunesys)	\$73,007.09	(\$73,007.09)	\$0.00	Other Costs
Sunesys Llc	\$38,003.81	(\$38,003.81)	\$0.00	Technology Costs
<b>Project Total:</b>	<b>\$111,010.90</b>	<b>(\$111,010.90)</b>	<b>\$0.00</b>	<b>070-FIBR - Coyote Canyon Elementary - Fiberoptic Network (CLOSED)</b>
Project: 070-FNCE - Coyote Canyon Elementary - Fence Project (CLOSED)				
Vendor	Encumbrance	Expenditure	Balance	Description
County Council	\$3.80	(\$3.80)	\$0.00	Project Planning
Harris Steel	\$28,649.14	(\$28,649.14)	\$0.00	Other Construction Costs
Inland Inspections	\$396.00	(\$396.00)	\$0.00	Inspection Costs
NTD Architecture Inc	\$1,842.96	(\$1,842.96)	\$0.00	Architect Fees

## MEASURE A & MEASURE N "COMPLETED" PROJECTS ENCUMBRANCE & EXPENDITURE BACKUP

Project: 070-FNCE - Coyote Canyon Elementary - Fence Project (CLOSED)				
Vendor	Encumbrance	Expenditure	Balance	Description
Neff Construction Inc	\$6,684.25	(\$6,684.25)	\$0.00	Construction Costs
<b>Project Total:</b>	<b>\$37,576.15</b>	<b>(\$37,576.15)</b>	<b>\$0.00</b>	<b>070-FNCE - Coyote Canyon Elementary - Fence Project (CLOSED)</b>
Project: 070-PLAY - Coyote Canyon Elementary - Playground Equipment (CLOSED)				
Vendor	Encumbrance	Expenditure	Balance	Description
Micon Construction	\$16,953.00	(\$16,953.00)	\$0.00	Construction Costs
Miracle Recreation	\$51,399.25	(\$51,399.25)	\$0.00	Furniture & Equipment
<b>Project Total:</b>	<b>\$68,352.25</b>	<b>(\$68,352.25)</b>	<b>\$0.00</b>	<b>070-PLAY - Coyote Canyon Elementary - Playground Equipment (CLOSED)</b>
Project: 070-SAFE - Coyote Canyon Elementary - Safety & Security (CLOSED)				
Vendor	Encumbrance	Expenditure	Balance	Description
College Glass	\$1,724.20	(\$1,724.20)	\$0.00	Glass, Windows & Mirrors
JMR Glass	\$8,360.88	(\$8,360.88)	\$0.00	Other Construction Costs
Q-Star Technology	\$6,058.97	(\$6,058.97)	\$0.00	Technology Costs
<b>Project Total:</b>	<b>\$16,144.05</b>	<b>(\$16,144.05)</b>	<b>\$0.00</b>	<b>070-SAFE - Coyote Canyon Elementary - Safety &amp; Security (CLOSED)</b>
Project: 070-TECH - Coyote Canyon Elementary - Technology Updates (CLOSED)				
Vendor	Encumbrance	Expenditure	Balance	Description
CDW Government	\$87,418.59	(\$87,418.59)	\$0.00	Technology Costs
California Western Visuals	\$9,687.36	(\$9,687.36)	\$0.00	Technology Costs
Dell Marketing Lp	\$5,443.81	(\$5,443.81)	\$0.00	Technology Costs
Ledesma & Meyer	\$16,901.53	(\$16,901.53)	\$0.00	Construction Management
Monoprice	\$440.05	(\$440.05)	\$0.00	Technology Costs
Sunesys Llc	\$8,324.33	(\$8,324.33)	\$0.00	Technology Costs
Time And Alarm Systems Inc	\$254,159.19	(\$254,159.19)	\$0.00	Security Costs
WLC Architects Inc	\$67,848.00	(\$67,848.00)	\$0.00	Architect Fees
<b>Project Total:</b>	<b>\$450,222.86</b>	<b>(\$450,222.86)</b>	<b>\$0.00</b>	<b>070-TECH - Coyote Canyon Elementary - Technology Updates (CLOSED)</b>
Project: 340-ENRG - Cucamonga Middle School - Energy Conservation (CLOSED)				
Vendor	Encumbrance	Expenditure	Balance	Description
Russell Sigler Inc	\$11,455.91	(\$11,455.91)	\$0.00	HVAC
Trane U S Inc	\$199,962.71	(\$199,962.71)	\$0.00	HVAC
<b>Project Total:</b>	<b>\$211,418.62</b>	<b>(\$211,418.62)</b>	<b>\$0.00</b>	<b>340-ENRG - Cucamonga Middle School - Energy Conservation (CLOSED)</b>



## MEASURE A & MEASURE N "COMPLETED" PROJECTS ENCUMBRANCE & EXPENDITURE BACKUP

Project: 340-FIBR - Cucamonga Middle School - Fiberoptic Networks (CLOSED)				
Vendor	Encumbrance	Expenditure	Balance	Description
Quanta Receivables (Sunesys)	\$73,007.09	(\$73,007.09)	\$0.00	Other Costs
Sunesys Llc	\$38,003.81	(\$38,003.81)	\$0.00	Technology Costs
<b>Project Total:</b>	<b>\$111,010.90</b>	<b>(\$111,010.90)</b>	<b>\$0.00</b>	<b>340-FIBR - Cucamonga Middle School - Fiberoptic Networks (CLOSED)</b>
Project: 340-FNCE - Cucamonga Middle School - Fence Project (CLOSED)				
Vendor	Encumbrance	Expenditure	Balance	Description
County Council	\$13.78	(\$13.78)	\$0.00	Project Planning
Harris Steel	\$103,992.62	(\$103,992.62)	\$0.00	Other Construction Costs
Inland Inspections	\$1,435.50	(\$1,435.50)	\$0.00	Inspection Costs
NTD Architecture Inc	\$6,680.73	(\$6,680.73)	\$0.00	Architect Fees
Neff Construction Inc	\$26,727.34	(\$26,727.34)	\$0.00	Construction Costs
Reliable Delivery Service	\$275.00	(\$275.00)	\$0.00	Courier Service
<b>Project Total:</b>	<b>\$139,124.97</b>	<b>(\$139,124.97)</b>	<b>\$0.00</b>	<b>340-FNCE - Cucamonga Middle School - Fence Project (CLOSED)</b>
Project: 340-FTNS - Cucamonga Middle School - Fitness Center (CLOSED)				
Vendor	Encumbrance	Expenditure	Balance	Description
Advanced Exercise Equipment	\$46,122.75	(\$46,122.75)	\$0.00	Furniture & Equipment
Brookstone	\$356.20	(\$356.20)	\$0.00	Furniture & Equipment
E And M Commercial Mainten	\$800.00	(\$800.00)	\$0.00	Contracted Services
Everlast Painting Company	\$5,350.00	(\$5,350.00)	\$0.00	Painting Costs
General Environmental Mgmt	\$970.00	(\$970.00)	\$0.00	Environmental Costs
GI Sports	\$569.68	(\$569.68)	\$0.00	Sports Equipment
Gopher	\$4,767.69	(\$4,767.69)	\$0.00	Sports Equipment
Inland Empire Architectura	\$2,979.00	(\$2,979.00)	\$0.00	Architect Fees
Inland Valley Daily Bulletin	\$360.00	(\$360.00)	\$0.00	Advertising
Mirage Designs Incorporate	\$11,250.00	(\$11,250.00)	\$0.00	Architect Fees
Moore Flooring Inc	\$21,040.16	(\$21,040.16)	\$0.00	Flooring Costs
Owen Electric Inc	\$10,902.63	(\$10,902.63)	\$0.00	Electrical Costs
Sierra Wholesale Hardware	\$2,728.17	(\$2,728.17)	\$0.00	Other Construction Costs
Specialized Builder	\$977.86	(\$977.86)	\$0.00	Maintenance Supplies
Tri-Best Visual Display	\$14,972.45	(\$14,972.45)	\$0.00	Furniture & Equipment
<b>Project Total:</b>	<b>\$124,146.59</b>	<b>(\$124,146.59)</b>	<b>\$0.00</b>	<b>340-FTNS - Cucamonga Middle School - Fitness Center (CLOSED)</b>

## MEASURE A & MEASURE N "COMPLETED" PROJECTS ENCUMBRANCE & EXPENDITURE BACKUP

Project: 340-MDR2 - Cucamonga Middle School - Modernization Phase II (CLOSED)				
Vendor	Encumbrance	Expenditure	Balance	Description
AAA Lead Consul. & Inspections Inc.	\$500.00	(\$500.00)	\$0.00	Consultant Costs
Ardent Environmental	\$9,325.00	(\$9,325.00)	\$0.00	Environmental Costs
BBG Construction	\$30,380.00	(\$30,380.00)	\$0.00	Construction Costs
CDW Government	\$51,855.59	(\$51,855.59)	\$0.00	Technology Costs
Cagles	\$19,098.00	(\$19,098.00)	\$0.00	Furniture & Equipment
Citizens Business Bank	\$41,813.95	(\$41,813.95)	\$0.00	Retention
Collaboration Solutions	\$2,550.00	(\$2,550.00)	\$0.00	Technology Costs
Division Of State Architect	\$384.74	(\$384.74)	\$0.00	Plan Check Fees
Fischer Inc	\$155,872.00	(\$155,872.00)	\$0.00	Other Construction
GO Architects Inc	\$92,665.00	(\$92,665.00)	\$0.00	Architect Fees
Golden State Bank	\$17,821.90	(\$17,821.90)	\$0.00	Retention
Inland Building Const.	\$794,465.05	(\$794,465.05)	\$0.00	Construction Costs
Ledesma & Meyer	\$219,075.95	(\$219,075.95)	\$0.00	Construction Management
Leighton Consulting Inc	\$2,871.45	(\$2,871.45)	\$0.00	Consultant Costs
Mobile Modular	\$13,090.93	(\$13,090.93)	\$0.00	Rentals, Leases & Repairs
RDM Electric Co	\$502,800.00	(\$502,800.00)	\$0.00	Electrical Costs
The Sun-Inland Valley Dail	\$5,364.20	(\$5,364.20)	\$0.00	Advertising
West Tech Mechanical Inc	\$338,616.10	(\$338,616.10)	\$0.00	Construction Costs
<b>Project Total:</b>	<b>\$2,298,549.86</b>	<b>(\$2,298,549.86)</b>	<b>\$0.00</b>	<b>340-MDR2 - Cucamonga Middle School - Modernization Phase II (CLOSED)</b>

Project: 340-MDRN - Cucamonga Middle School - Modernization (CLOSED)				
Vendor	Encumbrance	Expenditure	Balance	Description
AAA Lead Consul. & Inspections Inc.	\$950.00	(\$950.00)	\$0.00	Consultant Costs
ASR Constructors Inc	\$742,385.68	(\$742,385.68)	\$0.00	Construction Costs
Advance Teleco Usa	\$500.00	(\$500.00)	\$0.00	Technology Costs
Bond Closing Costs	(\$543.00)	\$543.00	\$0.00	Bond Closing Costs
Byerly, John R.	\$28,771.00	(\$28,771.00)	\$0.00	Construction Testing
California Arbor Care	\$2,065.00	(\$2,065.00)	\$0.00	Landscaping Costs
California Dept. Of Education	\$1,925.00	(\$1,925.00)	\$0.00	Plan Check Fees
California Surveillance	\$2,322.51	(\$2,322.51)	\$0.00	Security
Division Of State Architect	\$26,026.57	(\$26,026.57)	\$0.00	Plan Check Fees
General Environmental Mgmt	\$1,100.00	(\$1,100.00)	\$0.00	Environmental Costs

## MEASURE A & MEASURE N "COMPLETED" PROJECTS ENCUMBRANCE & EXPENDITURE BACKUP

Project: 340-MDRN - Cucamonga Middle School - Modernization (CLOSED)				
Vendor	Encumbrance	Expenditure	Balance	Description
Joe Construction	\$29,900.00	(\$29,900.00)	\$0.00	Construction Costs
NTD Architecture Inc	\$257,131.42	(\$257,131.42)	\$0.00	Architect Fees
Neff Construction Inc	\$156,593.13	(\$156,593.13)	\$0.00	Construction Costs
Owen Electric Inc	\$1,939.19	(\$1,939.19)	\$0.00	Electrical Costs
Robert Wada & Assoc Inc	\$17,940.00	(\$17,940.00)	\$0.00	Other Construction
Sport Supply Group	\$2,748.29	(\$2,748.29)	\$0.00	Sports Equipment
State Water Resources Cont	\$947.00	(\$947.00)	\$0.00	Utility Costs
Tomark Sports	\$18,253.25	(\$18,253.25)	\$0.00	Furniture & Equipment
<b>Project Total:</b>	<b>\$1,290,955.04</b>	<b>(\$1,290,955.04)</b>	<b>\$0.00</b>	<b>340-MDRN - Cucamonga Middle School - Modernization (CLOSED)</b>

Project: 340-SAFE - Cucamonga Middle School - Safety & Security (CLOSED)				
Vendor	Encumbrance	Expenditure	Balance	Description
California Surveillance	\$1,390.69	(\$1,390.69)	\$0.00	Security
Q-Star Technology	\$6,058.97	(\$6,058.97)	\$0.00	Technology Costs
<b>Project Total:</b>	<b>\$7,449.66</b>	<b>(\$7,449.66)</b>	<b>\$0.00</b>	<b>340-SAFE - Cucamonga Middle School - Safety &amp; Security (CLOSED)</b>

Project: 340-TECH - Cucamonga Middle School - Technology Updates (CLOSED)				
Vendor	Encumbrance	Expenditure	Balance	Description
CDW Government	\$88,734.98	(\$88,734.98)	\$0.00	Technology Costs
California Western Visuals	\$9,359.09	(\$9,359.09)	\$0.00	Technology Costs
Dell Marketing Lp	\$5,634.92	(\$5,634.92)	\$0.00	Technology Costs
GO Architects Inc	\$56,185.00	(\$56,185.00)	\$0.00	Architect Fees
Ledesma & Meyer	\$20,411.20	(\$20,411.20)	\$0.00	Construction Management
Monoprice	\$440.05	(\$440.05)	\$0.00	Technology Costs
Sunesys Llc	\$9,040.34	(\$9,040.34)	\$0.00	Technology Costs
Time And Alarm Systems Inc	\$218,771.24	(\$218,771.24)	\$0.00	Security Costs
<b>Project Total:</b>	<b>\$408,576.82</b>	<b>(\$408,576.82)</b>	<b>\$0.00</b>	<b>340-TECH - Cucamonga Middle School - Technology Updates (CLOSED)</b>

Project: 340-TRAK - Cucamonga Middle School - Track (CLOSED)				
Vendor	Encumbrance	Expenditure	Balance	Description
KCH Corporation	\$20,860.00	(\$20,860.00)	\$0.00	Inspection Costs
<b>Project Total:</b>	<b>\$20,860.00</b>	<b>(\$20,860.00)</b>	<b>\$0.00</b>	<b>340-TRAK - Cucamonga Middle School - Track (CLOSED)</b>



## MEASURE A & MEASURE N "COMPLETED" PROJECTS ENCUMBRANCE & EXPENDITURE BACKUP

Project: 380-ENRG - Ruth Musser Middle School - Energy Conservation (CLOSED)				
Vendor	Encumbrance	Expenditure	Balance	Description
Russell Sigler Inc	\$9,265.81	(\$9,265.81)	\$0.00	HVAC
Trane U S Inc	\$470,593.29	(\$470,593.29)	\$0.00	HVAC
<b>Project Total:</b>	<b>\$479,859.10</b>	<b>(\$479,859.10)</b>	<b>\$0.00</b>	<b>380-ENRG - Ruth Musser Middle School - Energy Conservation (CLOSED)</b>
Project: 380-FIBR - Ruth Musser Middle School - Fiberoptic Network (CLOSED)				
Vendor	Encumbrance	Expenditure	Balance	Description
Quanta Receivables (Sunesys)	\$73,007.09	(\$73,007.09)	\$0.00	Other Costs
Sunesys Llc	\$38,003.81	(\$38,003.81)	\$0.00	Technology Costs
<b>Project Total:</b>	<b>\$111,010.90</b>	<b>(\$111,010.90)</b>	<b>\$0.00</b>	<b>380-FIBR - Ruth Musser Middle School - Fiberoptic Network (CLOSED)</b>
Project: 380-FNCE - Ruth Musser Middle School - Fence Project (CLOSED)				
Vendor	Encumbrance	Expenditure	Balance	Description
County Council	\$0.46	(\$0.46)	\$0.00	Project Planning
Harris Steel	\$3,582.55	(\$3,582.55)	\$0.00	Other Construction Costs
Inland Inspections	\$49.50	(\$49.50)	\$0.00	Inspection Costs
NTD Architecture Inc	\$230.37	(\$230.37)	\$0.00	Architect Fees
Neff Construction Inc	\$835.52	(\$835.52)	\$0.00	Construction Costs
<b>Project Total:</b>	<b>\$4,698.40</b>	<b>(\$4,698.40)</b>	<b>\$0.00</b>	<b>380-FNCE - Ruth Musser Middle School - Fence Project (CLOSED)</b>
Project: 380-FTNS - Ruth Musser Middle School - Fitness Center (CLOSED)				
Vendor	Encumbrance	Expenditure	Balance	Description
Fitness Direct	\$17,998.25	(\$17,998.25)	\$0.00	Furniture & Equipment
IVL Contractors Inc	\$6,400.00	(\$6,400.00)	\$0.00	Contractor Fees
<b>Project Total:</b>	<b>\$24,398.25</b>	<b>(\$24,398.25)</b>	<b>\$0.00</b>	<b>380-FTNS - Ruth Musser Middle School - Fitness Center (CLOSED)</b>
Project: 380-SAFE - Ruth Musser Middle School - Safety & Security (CLOSED)				
Vendor	Encumbrance	Expenditure	Balance	Description
College Glass	\$4,310.50	(\$4,310.50)	\$0.00	Glass, Windows & Mirrors
JMR Glass	\$8,360.88	(\$8,360.88)	\$0.00	Other Construction Costs
Q-Star Technology	\$6,058.96	(\$6,058.96)	\$0.00	Technology Costs
<b>Project Total:</b>	<b>\$18,730.34</b>	<b>(\$18,730.34)</b>	<b>\$0.00</b>	<b>380-SAFE - Ruth Musser Middle School - Safety &amp; Security (CLOSED)</b>

## MEASURE A & MEASURE N "COMPLETED" PROJECTS ENCUMBRANCE & EXPENDITURE BACKUP

Project: 380-TECH - Ruth Musser Middle School - Technology Updates (CLOSED)				
Vendor	Encumbrance	Expenditure	Balance	Description
CDW Government	\$91,681.27	(\$91,681.27)	\$0.00	Technology Costs
California Western Visuals	\$9,630.96	(\$9,630.96)	\$0.00	Technology Costs
Dell Marketing Lp	\$6,115.69	(\$6,115.69)	\$0.00	Technology Costs
Ledesma & Meyer	\$35,368.45	(\$35,368.45)	\$0.00	Construction Management
Monoprice	\$440.05	(\$440.05)	\$0.00	Technology Costs
Sunesys Llc	\$8,733.33	(\$8,733.33)	\$0.00	Technology Costs
Time And Alarm Systems Inc	\$278,167.84	(\$278,167.84)	\$0.00	Security Costs
WLC Architects Inc	\$65,820.98	(\$65,820.98)	\$0.00	Architect Fees
<b>Project Total:</b>	<b>\$495,958.57</b>	<b>(\$495,958.57)</b>	<b>\$0.00</b>	<b>380-TECH - Ruth Musser Middle School - Technology Updates (CLOSED)</b>

Project: 701-3000 - District Wide - District Project Support (CLOSED)				
Vendor	Encumbrance	Expenditure	Balance	Description
California Financial Services	\$321,000.00	(\$281,500.00)	\$39,500.00	Project Planning Support
California Municipal	\$1,400.00	(\$1,400.00)	\$0.00	District Support Costs
Inland Valley Daily Bulletin	\$238.75	(\$238.75)	\$0.00	Advertising
TBWB Strategies	\$11,773.47	(\$11,773.47)	\$0.00	District Project Support
<b>Project Total:</b>	<b>\$334,412.22</b>	<b>(\$294,912.22)</b>	<b>\$39,500.00</b>	<b>701-3000 - District Wide - District Project Support (CLOSED)</b>

Project: 701-BOND - District Wide - Bond Expenditures 08-10 (CLOSED)				
Vendor	Encumbrance	Expenditure	Balance	Description
Bond Closing Costs	\$285.00	(\$285.00)	\$0.00	Bond Closing Costs
Dalton	\$94,465.84	(\$94,465.84)	\$0.00	Project Planning Support
Tbwb Public Finance	\$12,438.67	(\$12,438.67)	\$0.00	Project Planning Support
The Sign Shop	\$2,055.71	(\$2,055.71)	\$0.00	Signage Costs
<b>Project Total:</b>	<b>\$109,245.22</b>	<b>(\$109,245.22)</b>	<b>\$0.00</b>	<b>701-BOND - District Wide - Bond Expenditures 08-10 (CLOSED)</b>

Project: 701-FNCE - District Wide - Fence Project (CLOSED)				
Vendor	Encumbrance	Expenditure	Balance	Description
Cucamonga Valley Water Dis	\$27.57	(\$27.57)	\$0.00	Utility Costs
Inland Valley Daily Bulletin	\$1,895.00	(\$1,895.00)	\$0.00	Advertising
NTD Architecture Inc	\$19,500.00	(\$19,500.00)	\$0.00	Architect Fees
Robert Wada & Assoc Inc	\$8,300.00	(\$8,300.00)	\$0.00	Other Construction
<b>Project Total:</b>	<b>\$29,722.57</b>	<b>(\$29,722.57)</b>	<b>\$0.00</b>	<b>701-FNCE - District Wide - Fence Project (CLOSED)</b>

## MEASURE A & MEASURE N "COMPLETED" PROJECTS ENCUMBRANCE & EXPENDITURE BACKUP

Project: 701-SAFE - District Wide - Safety & Security (CLOSED)				
Vendor	Encumbrance	Expenditure	Balance	Description
Bond Closing Costs	(\$3,500.00)	\$3,500.00	\$0.00	Bond Closing Costs
Dial Communications Inc	\$41,364.49	(\$41,364.49)	\$0.00	Security Costs
<b>Project Total:</b>	<b>\$37,864.49</b>	<b>(\$37,864.49)</b>	<b>\$0.00</b>	<b>701-SAFE - District Wide - Safety &amp; Security (CLOSED)</b>
Project: 701-TECH - District Wide - Technology Updates (CLOSED)				
Vendor	Encumbrance	Expenditure	Balance	Description
A+ Interactive Technologie	\$1,820.98	(\$1,820.98)	\$0.00	Technology Costs
Aeries Training	\$295.40	(\$295.40)	\$0.00	Technology Costs
Athearn, Delores	\$8.00	(\$8.00)	\$0.00	Technology Costs
CDW Government	\$4,451.31	(\$4,451.31)	\$0.00	Technology Costs
California Western Visuals	\$589.85	(\$589.85)	\$0.00	Technology Costs
Eagle Software	\$7,900.00	(\$7,900.00)	\$0.00	Technology Costs
Lightspeed Systems Sales I	\$55,460.00	(\$55,460.00)	\$0.00	Technology Costs
Mineer, Rusty	\$149.80	(\$149.80)	\$0.00	Technology Costs
The Sun-Inland Valley Dail	\$5,911.28	(\$5,911.28)	\$0.00	Advertising
<b>Project Total:</b>	<b>\$76,586.62</b>	<b>(\$76,586.62)</b>	<b>\$0.00</b>	<b>701-TECH - District Wide - Technology Updates (CLOSED)</b>
Project: 708-SAFE - Maintenance/Operations - Safety & Security (CLOSED)				
Vendor	Encumbrance	Expenditure	Balance	Description
Q-Star Technology	\$6,778.52	(\$6,778.52)	\$0.00	Technology Costs
<b>Project Total:</b>	<b>\$6,778.52</b>	<b>(\$6,778.52)</b>	<b>\$0.00</b>	<b>708-SAFE - Maintenance/Operations - Safety &amp; Security (CLOSED)</b>
Project: 710-0000 - G.O. Bond Audit/Miscellaneous (CLOSED)				
Vendor	Encumbrance	Expenditure	Balance	Description
Eide Bailly LLP	\$12,500.00	(\$12,500.00)	\$0.00	Accounting Costs
Jeanette L Garcia & Assoc	\$8,105.50	(\$8,105.50)	\$0.00	Consulting Costs
Vavrinek Trine Day	\$20,400.00	(\$20,400.00)	\$0.00	Legal Costs
<b>Project Total:</b>	<b>\$41,005.50</b>	<b>(\$41,005.50)</b>	<b>\$0.00</b>	<b>710-0000 - G.O. Bond Audit/Miscellaneous (CLOSED)</b>
Project: 710-BOND - District Office - Bond Expenditures 08-10 (CLOSED)				
Vendor	Encumbrance	Expenditure	Balance	Description
Office Depot	\$204.13	(\$204.13)	\$0.00	Office Supplies
<b>Project Total:</b>	<b>\$204.13</b>	<b>(\$204.13)</b>	<b>\$0.00</b>	<b>710-BOND - District Office - Bond Expenditures 08-10 (CLOSED)</b>

## MEASURE A & MEASURE N "COMPLETED" PROJECTS ENCUMBRANCE & EXPENDITURE BACKUP

Project: 710-FIBR - District Office - Fiberoptic Network (CLOSED)				
Vendor	Encumbrance	Expenditure	Balance	Description
Bond Closing Costs	(\$6,801.45)	\$6,801.45	\$0.00	Bond Closing Costs
Quanta Receivables (Sunesys)	\$73,007.09	(\$73,007.09)	\$0.00	Other Costs
Sunesys Llc	\$38,003.80	(\$38,003.80)	\$0.00	Technology Costs
<b>Project Total:</b>	<b>\$104,209.44</b>	<b>(\$104,209.44)</b>	<b>\$0.00</b>	<b>710-FIBR - District Office - Fiberoptic Network (CLOSED)</b>

Project: 710-MDRN - District Office - New Operations Center (CLOSED)				
Vendor	Encumbrance	Expenditure	Balance	Description
AAA Lead Consul. & Inspections Inc.	\$775.00	(\$775.00)	\$0.00	Consultant Costs
Ardent Environmental	\$4,184.00	(\$4,184.00)	\$0.00	Environmental Costs
Bell Roof Company Inc	\$19,876.60	(\$19,876.60)	\$0.00	Roofing Costs
Byerly, John R.	\$199,846.25	(\$199,846.25)	\$0.00	Construction Testing
CA Geological Survey School Review Unit	\$3,600.00	(\$3,600.00)	\$0.00	Environmental Costs
CDW Government	\$592.63	(\$592.63)	\$0.00	Technology Costs
Caston, Inc.	\$279,146.00	(\$279,146.00)	\$0.00	Construction Costs
Central School District	\$10,311.60	(\$10,311.60)	\$0.00	Project Planning
Cucamonga Valley Water Dis	\$71,026.80	(\$71,026.80)	\$0.00	Utility Costs
Culver Newlin	\$11,523.00	(\$11,523.00)	\$0.00	Furniture & Equipment
Dan Worley Plumbing	\$630,755.70	(\$630,755.70)	\$0.00	Plumbing Costs
Desert Community Bank	\$16,629.30	(\$16,629.30)	\$0.00	Retention
Division Of State Architect	\$78,913.64	(\$78,913.64)	\$0.00	Plan Check Fees
E & R Glass Contractors Inc	\$94,000.00	(\$94,000.00)	\$0.00	Other Construction Costs
Everest Environmental Inc	\$15,405.00	(\$15,405.00)	\$0.00	Environmental Costs
Ewing Irrigation	\$640.75	(\$640.75)	\$0.00	Landscaping Costs
Executive Moving Systems	\$4,740.50	(\$4,740.50)	\$0.00	Moving Costs
Frontier Communications	\$5,783.43	(\$5,783.43)	\$0.00	Technology Costs
Fusco Engineers	\$14,600.00	(\$14,600.00)	\$0.00	Engineering Costs
GO Architects Inc	\$472,285.83	(\$472,285.83)	\$0.00	Architect Fees
Golden State Bank	\$477.20	(\$477.20)	\$0.00	Retention
Hawthorne Lift Systems	\$1,022.26	(\$1,022.26)	\$0.00	Construction Equipment Rental
Inland Empire Utilities Agency	\$5,544.00	(\$5,544.00)	\$0.00	Utility Costs
J & A Fence	\$33,185.00	(\$33,185.00)	\$0.00	Fencing Costs
KCB Towers Inc	\$438,552.54	(\$438,552.54)	\$0.00	Construction Costs



## MEASURE A & MEASURE N "COMPLETED" PROJECTS ENCUMBRANCE & EXPENDITURE BACKUP

Project: 710-MDRN - District Office - New Operations Center (CLOSED)				
Vendor	Encumbrance	Expenditure	Balance	Description
Ledesma & Meyer	\$644,790.19	(\$644,790.19)	\$0.00	Construction Management
Leighton Consulting Inc	\$846.80	(\$846.80)	\$0.00	Consultant Costs
Montgomery Hardware Company	\$63,364.00	(\$63,364.00)	\$0.00	Construction Costs
Naumann Hobbs Material Handling	\$12,348.57	(\$12,348.57)	\$0.00	Material Handling
Nuway, Inc.	\$502,783.00	(\$502,783.00)	\$0.00	Construction Costs
Office Depot	\$2,122.66	(\$2,122.66)	\$0.00	Office Supplies
Pacific Western Bank	\$11,546.66	(\$11,546.66)	\$0.00	Retention
RDM Electric Co	\$144,217.41	(\$144,217.41)	\$0.00	Electrical Costs
SWRCB	\$575.00	(\$575.00)	\$0.00	Other Administrative Costs
Southern California Landscape, Inc.	\$146,234.52	(\$146,234.52)	\$0.00	Landscaping Costs
Southwest Boulder & Stone	\$2,124.08	(\$2,124.08)	\$0.00	Site Construction
Stolo Cabinets, Inc.	\$51,848.00	(\$51,848.00)	\$0.00	Cabinetry
The Sign Shop	\$4,076.82	(\$4,076.82)	\$0.00	Signage Costs
The Sun-Inland Valley Dail	\$9,544.52	(\$9,544.52)	\$0.00	Advertising
Tri Valley Inspections Inc	\$150,290.00	(\$150,290.00)	\$0.00	Inspection Costs
Uline	\$4,069.05	(\$4,069.05)	\$0.00	Moving Costs
Vasquez Construction	\$14,999.60	(\$14,999.60)	\$0.00	Construction Costs
West Tech Mechanical Inc	\$92,510.24	(\$92,510.24)	\$0.00	Construction Costs
Worthington Direct	\$2,957.25	(\$2,957.25)	\$0.00	Furniture & Equipment
<b>Project Total:</b>	<b>\$4,274,665.40</b>	<b>(\$4,274,665.40)</b>	<b>\$0.00</b>	<b>710-MDRN - District Office - New Operations Center (CLOSED)</b>

Project: 710-TECH - District Office - Technology Updates (CLOSED)				
Vendor	Encumbrance	Expenditure	Balance	Description
A+ Interactive Technologie	\$1,076,561.88	(\$1,076,561.88)	\$0.00	Technology Costs
Apple Computer Inc	\$16,623.96	(\$16,623.96)	\$0.00	Technology Costs
CDW Government	\$64,172.05	(\$64,172.05)	\$0.00	Technology Costs
CRS Advanced Technology	\$8,156.00	(\$8,156.00)	\$0.00	Technology Costs
California Western Visuals	\$12,386.94	(\$12,386.94)	\$0.00	Technology Costs
Dell Marketing Lp	\$158,160.67	(\$158,160.67)	\$0.00	Technology Costs
Eagle Software	\$1,136.90	(\$1,136.90)	\$0.00	Technology Costs
GO Architects Inc	\$25,525.00	(\$25,525.00)	\$0.00	Architect Fees
Holman of Nevada Inc.	\$6,006.25	(\$6,006.25)	\$0.00	Technology Costs
Infotech Computer Services	\$135.94	(\$135.94)	\$0.00	Technology Costs

## MEASURE A & MEASURE N "COMPLETED" PROJECTS ENCUMBRANCE & EXPENDITURE BACKUP

Project: 710-TECH - District Office - Technology Updates (CLOSED)				
Vendor	Encumbrance	Expenditure	Balance	Description
Ledesma & Meyer	\$6,402.40	(\$6,402.40)	\$0.00	Construction Management
Monoprice	\$294.32	(\$294.32)	\$0.00	Technology Costs
Time And Alarm Systems Inc	\$67,987.67	(\$67,987.67)	\$0.00	Security Costs
<b>Project Total:</b>	<b>\$1,443,549.98</b>	<b>(\$1,443,549.98)</b>	<b>\$0.00</b>	<b>710-TECH - District Office - Technology Updates (CLOSED)</b>
Project: E020-ENR2 - Central - Energy Efficiency Project (CLOSED)				
Vendor	Encumbrance	Expenditure	Balance	Description
AAA Lead Consul. & Inspections Inc.	\$350.00	(\$350.00)	\$0.00	Consultant Costs
Ardent Environmental	\$1,120.00	(\$1,120.00)	\$0.00	Environmental Costs
Brickley Environmental	\$1,798.80	(\$1,798.80)	\$0.00	Environmental Costs
Division Of State Architect	\$3,568.10	(\$3,568.10)	\$0.00	Plan Check Fees
Inland Inspections	\$5,808.00	(\$5,808.00)	\$0.00	Inspection Costs
Inland Valley Daily Bulletin	\$999.36	(\$999.36)	\$0.00	Advertising
Ledesma & Meyer	\$53,062.80	(\$53,062.80)	\$0.00	Construction Management
NKS Mechanical	\$545,078.41	(\$545,078.41)	\$0.00	Mechanical Retrofit
Trane U S Inc	\$19,955.08	(\$19,955.08)	\$0.00	HVAC
WLC Architects Inc	\$92,881.53	(\$92,881.53)	\$0.00	Architect Fees
<b>Project Total:</b>	<b>\$724,622.08</b>	<b>(\$724,622.08)</b>	<b>\$0.00</b>	<b>E020-ENR2 - Central - Energy Efficiency Project (CLOSED)</b>
Project: E030-ENR2 - Valle Vista - Energy Efficiency Project (CLOSED)				
Vendor	Encumbrance	Expenditure	Balance	Description
AAA Lead Consul. & Inspections Inc.	\$350.00	(\$350.00)	\$0.00	Consultant Costs
Ardent Environmental	\$2,000.00	(\$2,000.00)	\$0.00	Environmental Costs
Department of General Services	\$537.50	(\$537.50)	\$0.00	Plan Check Fees
Division Of State Architect	\$3,686.50	(\$3,686.50)	\$0.00	Plan Check Fees
Inland Inspections	\$16,882.00	(\$16,882.00)	\$0.00	Inspection Costs
Inland Valley Daily Bulletin	\$1,946.77	(\$1,946.77)	\$0.00	Advertising
Ledesma & Meyer	\$86,095.66	(\$86,095.66)	\$0.00	Construction Management
NKS Mechanical	\$321,471.20	(\$321,471.20)	\$0.00	Mechanical Retrofit
River City Testing	\$3,524.25	(\$3,524.25)	\$0.00	Construction Testing
Trane U S Inc	\$9,459.38	(\$9,459.38)	\$0.00	HVAC
WLC Architects Inc	\$103,882.14	(\$103,882.14)	\$0.00	Architect Fees

## MEASURE A & MEASURE N "COMPLETED" PROJECTS ENCUMBRANCE & EXPENDITURE BACKUP

Project: E030-ENR2 - Valle Vista - Energy Efficiency Project (CLOSED)				
Vendor	Encumbrance	Expenditure	Balance	Description
Western Air	\$326,588.00	(\$326,588.00)	\$0.00	HVAC
<b>Project Total:</b>	<b>\$876,423.40</b>	<b>(\$876,423.40)</b>	<b>\$0.00</b>	<b>E030-ENR2 - Valle Vista - Energy Efficiency Project (CLOSED)</b>
Project: E050-ENR2 - Dona Merced - Energy Efficiency Project (CLOSED)				
Vendor	Encumbrance	Expenditure	Balance	Description
Department of General Services	\$376.25	(\$376.25)	\$0.00	Plan Check Fees
Inland Inspections	\$5,502.00	(\$5,502.00)	\$0.00	Inspection Costs
Inland Valley Daily Bulletin	\$1,665.70	(\$1,665.70)	\$0.00	Advertising
Ledesma & Meyer	\$24,019.26	(\$24,019.26)	\$0.00	Construction Management
Trane U S Inc	\$91,612.12	(\$91,612.12)	\$0.00	HVAC
WLC Architects Inc	\$43,296.20	(\$43,296.20)	\$0.00	Architect Fees
Western Air	\$138,000.00	(\$138,000.00)	\$0.00	HVAC
<b>Project Total:</b>	<b>\$304,471.53</b>	<b>(\$304,471.53)</b>	<b>\$0.00</b>	<b>E050-ENR2 - Dona Merced - Energy Efficiency Project (CLOSED)</b>
Project: E060-ENR2 - Bear Gulch Elementary - Energy Efficiency Project (CLOSED)				
Vendor	Encumbrance	Expenditure	Balance	Description
AAA Lead Consul. & Inspections Inc.	\$450.00	(\$450.00)	\$0.00	Consultant Costs
Allison Mechanical	\$444,798.00	(\$444,798.00)	\$0.00	HVAC Contractor
Ardent Environmental	\$1,120.00	(\$1,120.00)	\$0.00	Environmental Costs
Division Of State Architect	\$2,972.25	(\$2,972.25)	\$0.00	Plan Check Fees
Inland Inspections	\$6,864.00	(\$6,864.00)	\$0.00	Inspection Costs
Inland Valley Daily Bulletin	\$3,007.60	(\$3,007.60)	\$0.00	Advertising
Ledesma & Meyer	\$93,175.94	(\$93,175.94)	\$0.00	Construction Management
Spec Construction Co., Inc.	\$484,996.00	(\$484,996.00)	\$0.00	Construction Costs
Trane U S Inc	\$16,037.99	(\$16,037.99)	\$0.00	HVAC
WLC Architects Inc	\$105,337.38	(\$105,337.38)	\$0.00	Architect Fees
<b>Project Total:</b>	<b>\$1,158,759.16</b>	<b>(\$1,158,759.16)</b>	<b>\$0.00</b>	<b>E060-ENR2 - Bear Gulch Elementary - Energy Efficiency Project (CLOSED)</b>
Project: E070-ENR2 - Coyote Canyon Elem. - Energy Efficiency Project (CLOSED)				
Vendor	Encumbrance	Expenditure	Balance	Description
Inland Inspections	\$5,063.00	(\$5,063.00)	\$0.00	Inspection Costs
Trane U S Inc	\$952,195.00	(\$952,195.00)	\$0.00	HVAC
<b>Project Total:</b>	<b>\$957,258.00</b>	<b>(\$957,258.00)</b>	<b>\$0.00</b>	<b>E070-ENR2 - Coyote Canyon Elem. - Energy Efficiency Project (CLOSED)</b>

## MEASURE A & MEASURE N "COMPLETED" PROJECTS ENCUMBRANCE & EXPENDITURE BACKUP

Project: E340-ENR2 - Cucamonga Middle - Energy Efficiency Project (CLOSED)				
Vendor	Encumbrance	Expenditure	Balance	Description
AAA Lead Consul. & Inspections Inc.	\$375.00	(\$375.00)	\$0.00	Consultant Costs
Ardent Environmental	\$1,120.00	(\$1,120.00)	\$0.00	Environmental Costs
Brickley Environmental	\$1,199.20	(\$1,199.20)	\$0.00	Environmental Costs
Division Of State Architect	\$6,459.58	(\$6,459.58)	\$0.00	Plan Check Fees
Inland Inspections	\$6,336.00	(\$6,336.00)	\$0.00	Inspection Costs
Inland Valley Daily Bulletin	\$1,842.57	(\$1,842.57)	\$0.00	Advertising
Ledesma & Meyer	\$98,804.71	(\$98,804.71)	\$0.00	Construction Management
NKS Mechanical	\$1,024,175.39	(\$1,024,175.39)	\$0.00	Mechanical Retrofit
River City Testing	\$424.00	(\$424.00)	\$0.00	Construction Testing
Trane U S Inc	\$148,180.23	(\$148,180.23)	\$0.00	HVAC
WLC Architects Inc	\$148,665.13	(\$148,665.13)	\$0.00	Architect Fees
<b>Project Total:</b>	<b>\$1,437,581.81</b>	<b>(\$1,437,581.81)</b>	<b>\$0.00</b>	<b>E340-ENR2 - Cucamonga Middle - Energy Efficiency Project (CLOSED)</b>
Project: E380-ENR2 - Ruth Musser Middle - Energy Efficiency Project (CLOSED)				
Vendor	Encumbrance	Expenditure	Balance	Description
Inland Inspections	\$10,167.50	(\$10,167.50)	\$0.00	Inspection Costs
Trane U S Inc	\$1,284,806.86	(\$1,284,806.86)	\$0.00	HVAC
<b>Project Total:</b>	<b>\$1,294,974.36</b>	<b>(\$1,294,974.36)</b>	<b>\$0.00</b>	<b>E380-ENR2 - Ruth Musser Middle - Energy Efficiency Project (CLOSED)</b>
Project: P-20-PHON - Central - New Phone Project (CLOSED)				
Vendor	Encumbrance	Expenditure	Balance	Description
CDW Government	\$4,999.64	(\$4,999.64)	\$0.00	Technology Costs
<b>Project Total:</b>	<b>\$4,999.64</b>	<b>(\$4,999.64)</b>	<b>\$0.00</b>	<b>P-20-PHON - Central - New Phone Project (CLOSED)</b>
Project: P-30-PHON - Valley Vista - New Phone Project (CLOSED)				
Vendor	Encumbrance	Expenditure	Balance	Description
CDW Government	\$5,522.23	(\$5,522.23)	\$0.00	Technology Costs
<b>Project Total:</b>	<b>\$5,522.23</b>	<b>(\$5,522.23)</b>	<b>\$0.00</b>	<b>P-30-PHON - Valley Vista - New Phone Project (CLOSED)</b>
Project: P-340-PHON - Cucamonga Middle School - New Phone Project (CLOSED)				
Vendor	Encumbrance	Expenditure	Balance	Description
CDW Government	\$4,417.78	(\$4,417.78)	\$0.00	Technology Costs
<b>Project Total:</b>	<b>\$4,417.78</b>	<b>(\$4,417.78)</b>	<b>\$0.00</b>	<b>P-340-PHON - Cucamonga Middle School - New Phone Project (CLOSED)</b>



## MEASURE A & MEASURE N "COMPLETED" PROJECTS ENCUMBRANCE & EXPENDITURE BACKUP

Project: P-380-PHON - Ruth Musser Middle School - New Phone Project (CLOSED)				
Vendor	Encumbrance	Expenditure	Balance	Description
CDW Government	\$6,044.81	(\$6,044.81)	\$0.00	Technology Costs
<b>Project Total:</b>	<b>\$6,044.81</b>	<b>(\$6,044.81)</b>	<b>\$0.00</b>	<b>P-380-PHON - Ruth Musser Middle School - New Phone Project (CLOSED)</b>
Project: P-50-PHON - Dona Merced Elementary - New Phone Project (CLOSED)				
Vendor	Encumbrance	Expenditure	Balance	Description
CDW Government	\$5,522.23	(\$5,522.23)	\$0.00	Technology Costs
<b>Project Total:</b>	<b>\$5,522.23</b>	<b>(\$5,522.23)</b>	<b>\$0.00</b>	<b>P-50-PHON - Dona Merced Elementary - New Phone Project (CLOSED)</b>
Project: P-60-PHON - Bear Gulch Elementary - New Phone Project (CLOSED)				
Vendor	Encumbrance	Expenditure	Balance	Description
CDW Government	\$4,940.37	(\$4,940.37)	\$0.00	Technology Costs
<b>Project Total:</b>	<b>\$4,940.37</b>	<b>(\$4,940.37)</b>	<b>\$0.00</b>	<b>P-60-PHON - Bear Gulch Elementary - New Phone Project (CLOSED)</b>
Project: P-70-PHON - Coyote Canyon Elementary - New Phone Project (CLOSED)				
Vendor	Encumbrance	Expenditure	Balance	Description
CDW Government	\$3,313.34	(\$3,313.34)	\$0.00	Technology Costs
<b>Project Total:</b>	<b>\$3,313.34</b>	<b>(\$3,313.34)</b>	<b>\$0.00</b>	<b>P-70-PHON - Coyote Canyon Elementary - New Phone Project (CLOSED)</b>
Project: P-710-PHON - District Office - New Phone Project (CLOSED)				
Vendor	Encumbrance	Expenditure	Balance	Description
CDW Government	\$1,104.21	(\$1,104.21)	\$0.00	Technology Costs
<b>Project Total:</b>	<b>\$1,104.21</b>	<b>(\$1,104.21)</b>	<b>\$0.00</b>	<b>P-710-PHON - District Office - New Phone Project (CLOSED)</b>
<b>Grand Total:</b>	<b>\$43,731,526.18</b>	<b>(\$43,692,026.18)</b>	<b>\$39,500.00</b>	<b>Central School District</b>