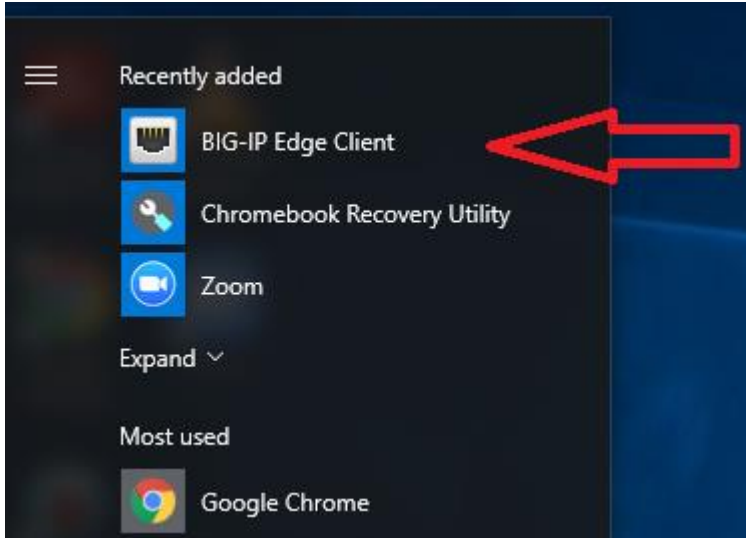
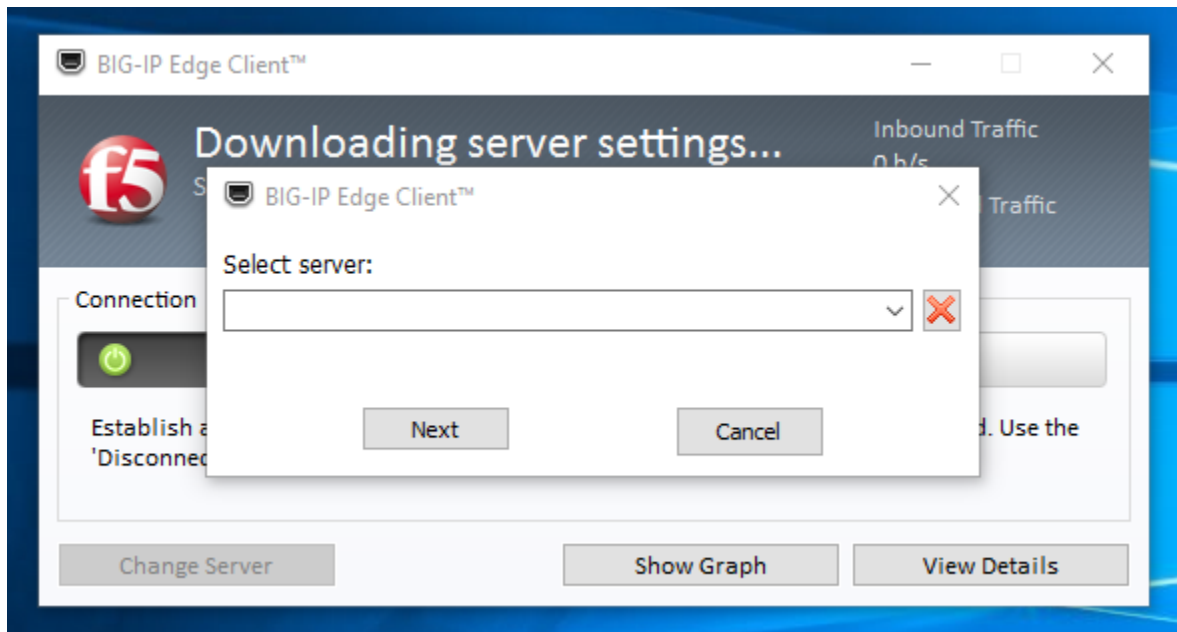


Accessing E-School from Home

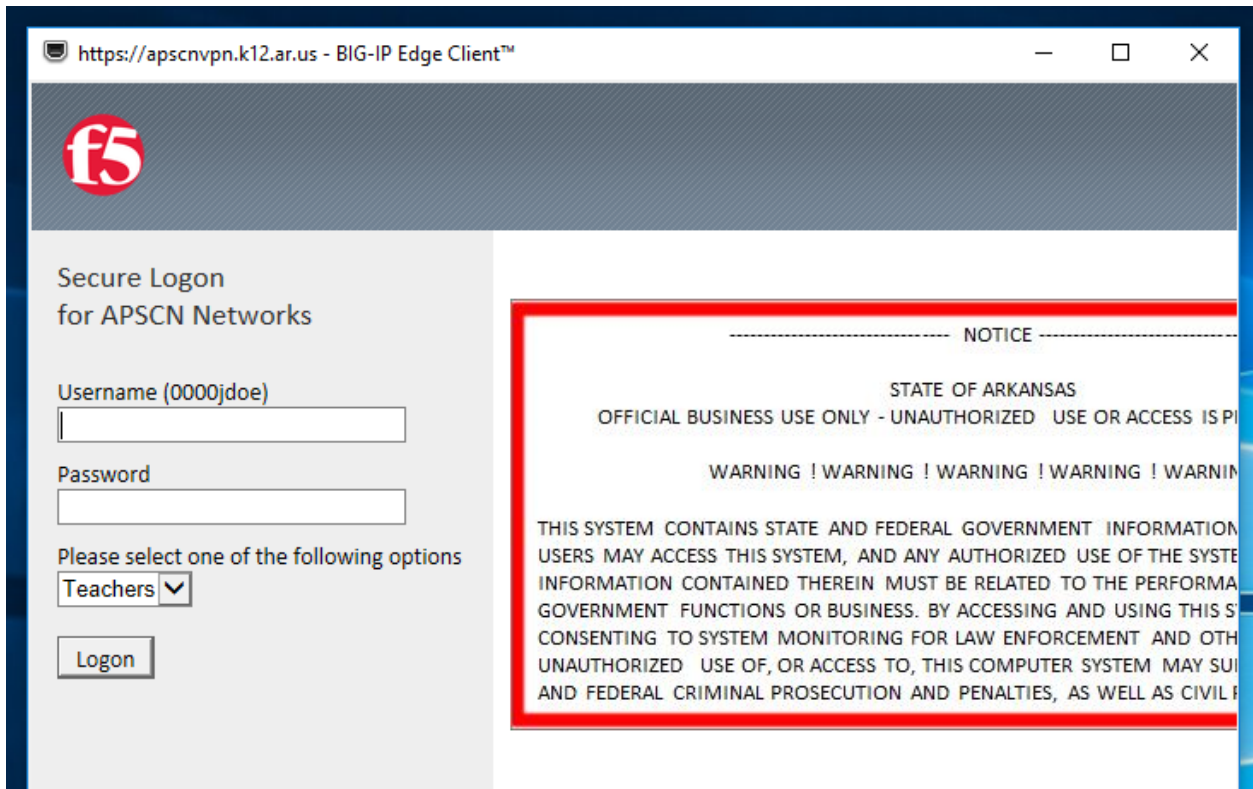
1. Click on start, then click on BIG-IP Edge Client



2. The following should be displayed.



3. In the Select server dialog box enter apscnvpn.k12.ar.us and click next.
4. The following Webpage should open.



5. In the Username field enter your E-School username i.e. 5801jsmith then enter your E-School password. If you have forgotten your password, you can reset it [here](#).
6. If you are asked to allow this program choose yes.
7. If Security Alert Prompts Do you want to allow this operation? Choose yes.
8. A new webpage should open to a login screen as shown below.

Welcome to

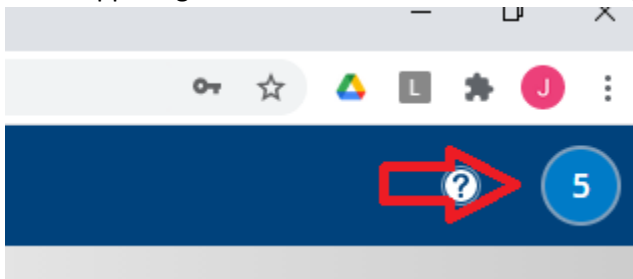
Teacher Access Center

User Name

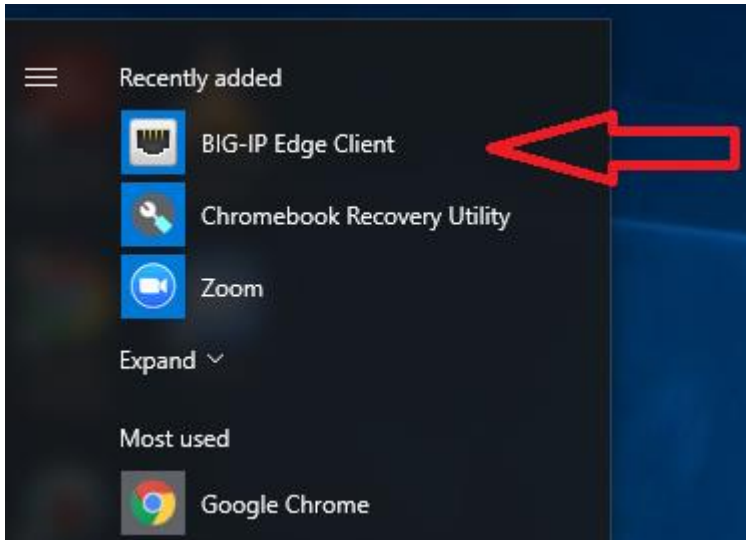
Password

Sign In

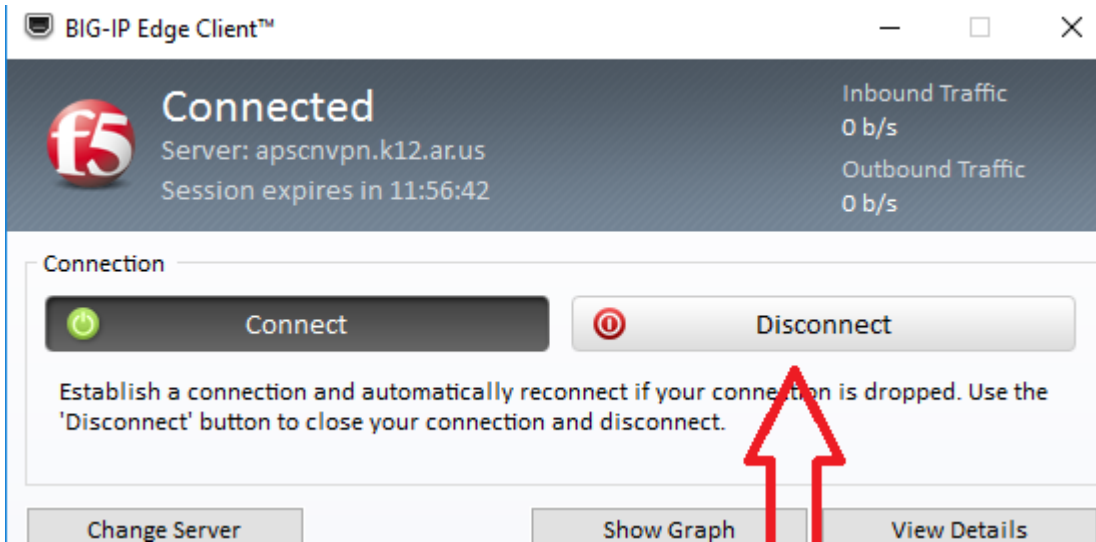
9. Enter your E-School username and password
10. You should now be in TAC.
11. When you are finished with TAC there are two logout selections.
12. In the upper right side of screen click on the following icon.



13. Choose sign out
14. You may now close the webpage.
15. Click on the start button and click on BIG-IP Edge Client again.



16. Click disconnect.



17. You are now completely logged out of E-School.