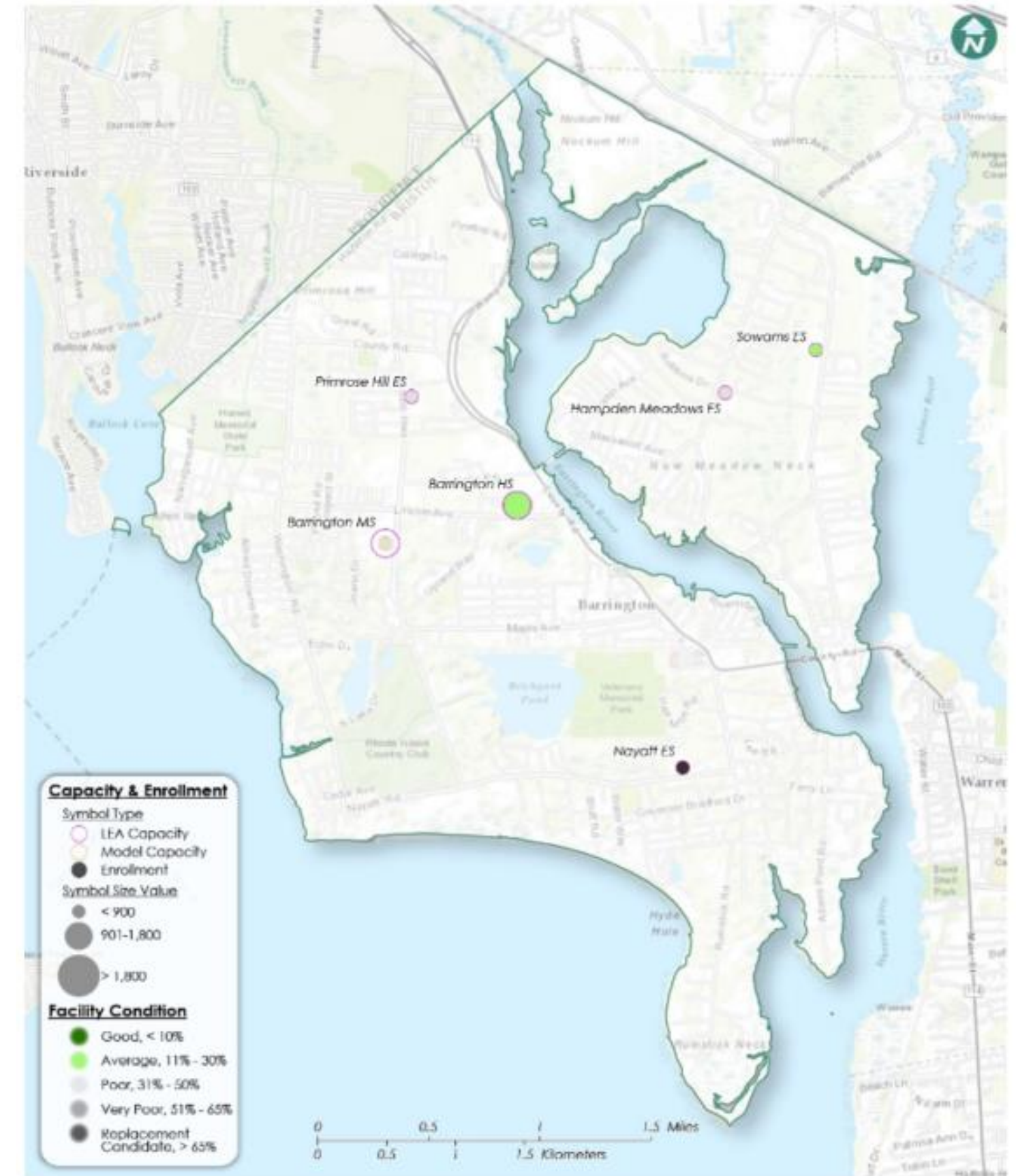


KΛESTLE BOOS
a s s o c i a t e s , i n c

Agenda

- Review District educational goals and program growth concepts
- Review Options
- Open Discussion
- Q&A



A photograph of a modern elementary school interior, likely a library or common area. The space features large windows on the right side, providing a view of another building. On the left, there are wooden bookshelves filled with books. In the center and right, there are several small tables with blue upholstered chairs. The ceiling has exposed wooden beams and modern lighting fixtures. The overall atmosphere is bright and contemporary.

DISTRICT OPTIONS - ELEMENTARY SCHOOLS

Curriculum Goals and Program Growth

- Dedicated Art, Music, Maker Space within schools
- Future and growth of PreK program
- Appropriate Special education spaces
- Interventionist spaces
- Break-out and Collaboration spaces for students
- Teacher Planning Area



Barrington Public Schools
2018-2023
Strategic Plan

● Empowering All Students to Excel ●

To achieve our mission, we commit to...

- make student-centered decisions
- demonstrate respect in all relationships
- create purposeful, inclusive, and responsive dialogue
- practice transparent, effective, and strategic financial management

1 Student Success

We reach all students and close gaps in achievement between groups of students; all means all. Our students are provided opportunities to engage in critical thinking, collaboration, communication, and creativity.

Our Student Success goals for 2018-2019 include:

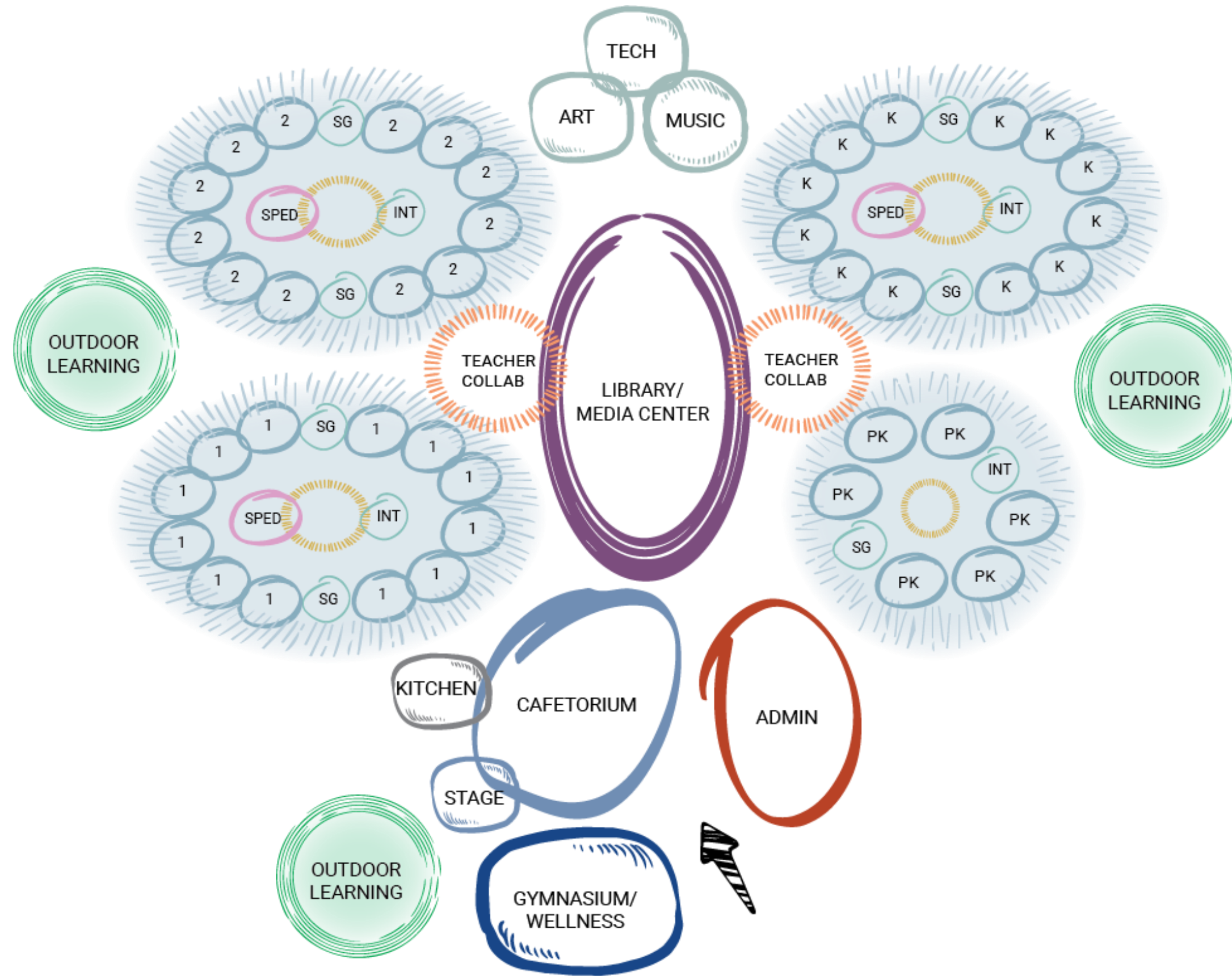
- Decreasing achievement gaps
- Increasing student engagement through Project Based Learning, Experiential Learning, Real-World Learning, Deeper Learning, and HS Pathways



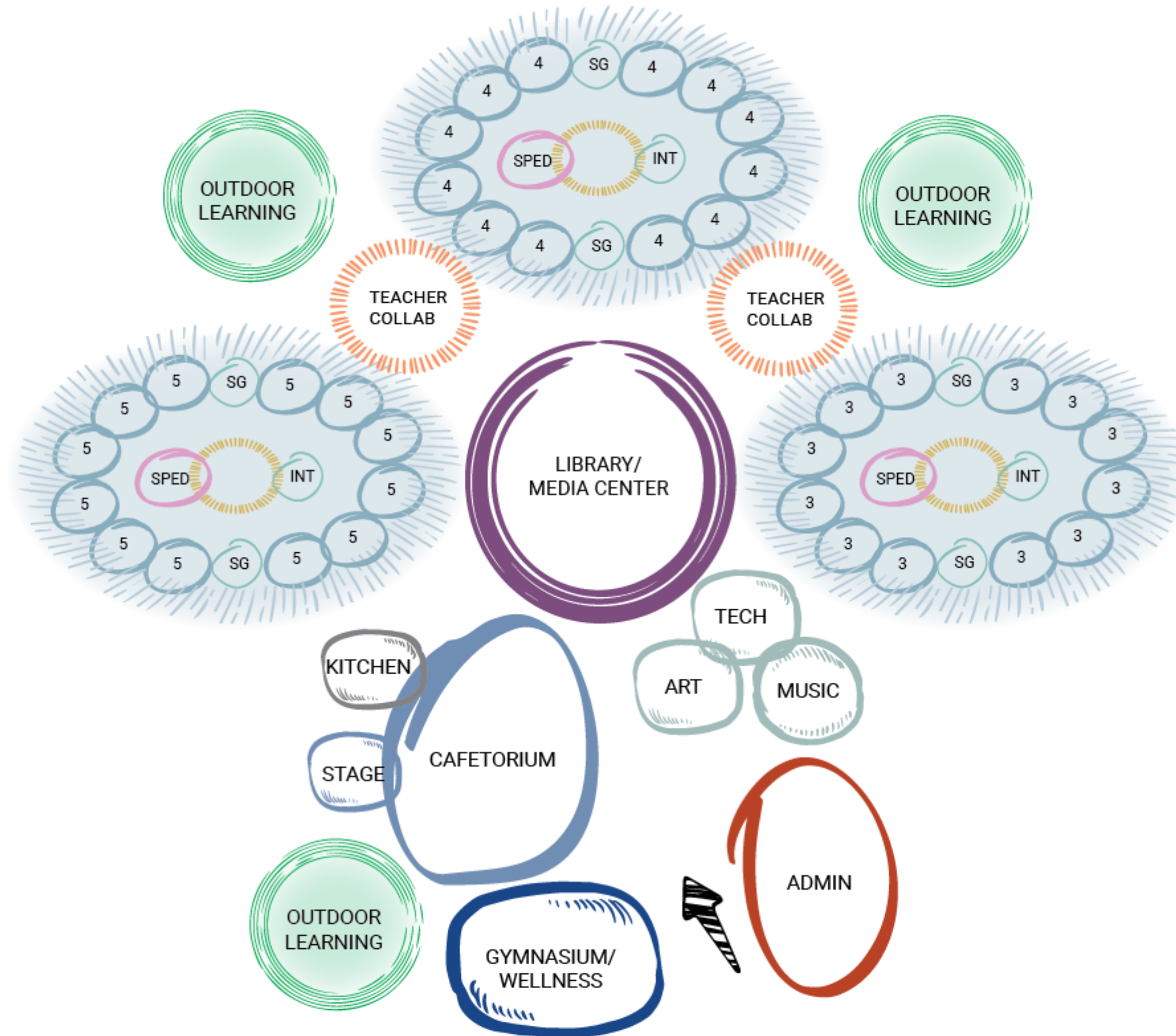
High Level Considerations

- Elementary Schools are overcrowded and its affecting curriculum
- Buildings have significant ACM (Excluding Sowams)
- "Right-Sizing" the schools for Equity
 - Provide dedicated Art, Music, STEM/Maker
 - Intervention and Breakout spaces
 - Dedicated Gym
- Early Childhood Center
 - PreK and K fit in existing footprint
 - School already was remediated in 90s – no ACMs
 - Sowams has large classrooms to accommodate early childhood classrooms
 - No transitions Grades 1-5
- Consolidation – Is this desired in Barrington?
- Can the existing building create space that aligns with the educational models?
- Project budget goals





EDUCATIONAL MODEL PK-2



EDUCATIONAL MODEL 3-5

Option 1:

- No Redistricting
- No grade realignment
- No curriculum or program alignment
- Creates baseline for options
- Will not achieve incentive bonuses
- Cost to repair work in exact configuration to “like new” condition
- Does not align with district long term educational vision

		Primary Schools			
	School Name	Hampden Meadows	Primrose Hill	Nayatt	Sowams
Facility Data					
	Year Constructed	1956	1954	1954	1962
	Facility GSF	49350	36000	34000	32700
	2020-2021 Enrollment				
	Accessible	Yes	NO	NO	Yes
	Secure Entry	NO	NO	NO	NO
Curriculum Opportunities and Equity					
	PreK Classrooms	n/a	2	n/a	n/a
	Classrooms	21	15	17	12
	Dedicated Art	Yes	Shared	Shared	Yes
	Dedicated Music	Yes	NO	NO	NO
	Dedicated STEM	Yes	NO	NO	NO
	Technology	n/a	n/a	n/a	n/a
	Cafeteria	MP	MP	MP	MP
	Gymnasium	NO	NO	NO	NO
	Auditorium	n/a	n/a	n/a	n/a
	Library	Yes	Yes	Undersized	Yes
	Special Education	Fair	Fair	Fair	Not ideal
	Appropriate Intervention	NO	NO	NO	NO
	Break-out/Collaboration	NO	NO	NO	NO



OPTION 1 – ASSET PROTECTION

Option 2:

- No Redistricting
- No grade realignment
- Curriculum and program alignment
- ADA Accessibility
- Security upgrades
- Dedicated Art, Music, STEM/Maker
- Gymnasium Additions
- Space for intervention and breakout/collaboration
- Most expensive solution
- Does not align with district long term educational vision

	Primary Schools			
School Name	Hampden Meadows	Primrose Hill	Nayatt	Sowams
Facility Data				
Year Constructed	1956	1954	1954	1962
Facility GSF	49350	36000	34000	32700
2020-2021 Enrollment				
Accessible	Yes	Elevator 300	Elevator 300	Yes
Secure Entry	Secure Vest	Secure Vest	Secure Vest	Secure Vest
Curriculum Opportunities and Equity				
PreK Classrooms	n/a	1200	n/a	n/a
Classrooms	21	15	17	12
Dedicated Art	Yes	Shared	Shared	Yes
Dedicated Music	Yes	1150	1150	1150
Dedicated STEM	Yes	1000	1000	1000
Technology	n/a	n/a	n/a	n/a
Cafeteria	MP	MP	MP	MP
Gymnasium	6300	6300	6300	6300
Auditorium	n/a	n/a	n/a	n/a
Library	Yes	Yes	2020	Yes
Special Education	Fair	Fair	Fair	Not ideal
Appropriate Intervention	1000	1000	1000	1000
Break-out/Collaboration	1000	1000	1000	1000
Cost Data				
Repair Cost				
Renovation Cost	n/a	n/a	n/a	n/a
Addition Cost	n/a	n/a	n/a	n/a



OPTION 2 – PROGRAM ALIGNMENT

Option 3A:

- Redistricting
- Grade realignment
- Curriculum and program alignment
- Creates ECC for PreK/K
- Eliminates transitions 1-5
- ADA Accessibility
- Security upgrades
- Dedicated Art, Music, STEM/Maker
- Gymnasium Additions
- Space for intervention and breakout/collaboration
- Does not align with district long term educational vision

	Primary Schools			
School Name	Hampden Meadows	Primrose Hill	Nayatt	Sowams
Facility Data				
Year Constructed	1956	1954	1954	1962
Facility GSF	49350	36000	34000	32700
2020-2021 Enrollment				
Accessible	Yes	Elevator 300	Elevator 300	Yes
Secure Entry	Secure Vest	Secure Vest	Secure Vest	Secure Vest
Curriculum Opportunities and Equity				
PreK Classrooms	n/a	n/a	n/a	3 Classrooms
Classrooms	21	13 (+4 CR)	15 (+4 CR)	12
Dedicated Art	Yes	Shared	Shared	Reclaimed
Dedicated Music	Yes	Reclaimed	Reclaimed	n/a
Dedicated STEM	Yes	Reclaimed	Reclaimed	n/a
Technology	n/a	n/a	n/a	n/a
Cafeteria	MP	MP	MP	MP
Gymnasium	6300	6300	6300	n/a
Auditorium	n/a	n/a	n/a	n/a
Library	Yes	Yes	2020	Yes
Special Education	Fair	Fair	Fair	Inclusion + Intervention
Appropriate Intervention	1000	1000	1000	n/a
Break-out/Collaboration	1000	1000	1000	n/a
Cost Data				
Repair Cost				
Renovation Cost	n/a	n/a	n/a	n/a
Addition Cost	n/a	n/a	n/a	n/a



OPTION 3A – GRADE RECONFIGURATION - EEC

Option 3B:

- Redistricting
- Grade realignment
- Curriculum and program alignment
- Creates PreK pod at Primrose Hill
- Eliminates transitions K-5
- ADA Accessibility
- Security upgrades
- Dedicated Art, Music, STEM/Maker
- Gymnasium Additions
- Space for intervention and breakout/collaboration
- Does not align with district long term educational vision

	Primary Schools			
School Name	Hampden Meadows	Primrose Hill	Nayatt	Sowams
Facility Data				
Year Constructed	1956	1954	1954	1962
Facility GSF	49350	36000	34000	32700
2020-2021 Enrollment				
Accessible	Yes	Elevator 300	Elevator 300	Yes
Secure Entry	Secure Vest	Secure Vest	Secure Vest	Secure Vest
Curriculum Opportunities and Equity				
PreK Classrooms	n/a	Reclaimed	n/a	n/a
Classrooms	21	15 (+10 CR)	12	12
Dedicated Art	Yes	1000	Reclaimed	Yes
Dedicated Music	Yes	1150	Reclaimed	Reclaimed
Dedicated STEM	Yes	1000	Reclaimed	1000
Technology	n/a	n/a	n/a	n/a
Cafeteria	MP	MP	MP	MP
Gymnasium	6300	6300	6300	6300
Auditorium	n/a	n/a	n/a	n/a
Library	Yes	2020	Reclaimed	Yes
Special Education	Fair	Fair	Fair	Not ideal
Appropriate Intervention	1000	1000	Reclaimed	Reclaimed
Break-out/Collaboration	1000	1000	Reclaimed	1000
Cost Data				
Repair Cost				
Renovation Cost	n/a	n/a	n/a	n/a
Addition Cost	n/a	n/a	n/a	n/a



OPTION 3B – GRADE RECONFIGURATION – K-5

Option 4A:

- Redistricting
- Grade realignment
- Curriculum and program alignment

- Close/Repurpose Primrose Hill
- Creates ECC
- Eliminates transitions 1-5
- ADA Accessibility
- Security upgrades
- Dedicated Art, Music, STEM/Maker
- Gymnasium Additions
- Space for intervention and breakout/collaboration
- Does not align with district long term educational vision

		Primary Schools			
	School Name	Hampden Meadows	Primrose Hill	Nayatt	Sowams
Facility Data					
	Year Constructed	1956	1954	1954	1962
	Facility GSF	49350	36000	34000	32700
	2020-2021 Enrollment				
	Accessible	Yes	Close Building	Elevator 300	Yes
	Secure Entry	Secure Vest		Secure Vest	Secure Vest
Curriculum Opportunities and Equity					
	PreK Classrooms	n/a		n/a	3 Classrooms
	Classrooms	21 (+8 CR)		15 (+8 CR)	12
	Dedicated Art	Yes		Shared	Reclaimed
	Dedicated Music	Yes		Reclaimed	n/a
	Dedicated STEM	Yes		Reclaimed	n/a
	Technology	n/a		n/a	n/a
	Cafeteria	MP		MP	MP
	Gymnasium	6300		6300	n/a
	Auditorium	n/a		n/a	n/a
	Library	Yes		2020	Yes
	Special Education	Fair		Fair	Inclusion + Intervention
	Appropriate Intervention	1000		1000	n/a
	Break-out/Collaboration	1000		1000	n/a
Cost Data					
	Repair Cost				
	Renovation Cost	n/a	n/a	n/a	n/a
	Addition Cost	n/a	n/a	n/a	n/a



Option 4B:

- Redistricting
- Grade realignment
- Curriculum and program alignment
- Close/Repurpose Hampden Meadows
- Preferred geographic elementary schools when consolidated
- Creates ECC
- Eliminates transitions 1-5
- ADA Accessibility
- Security upgrades
- Dedicated Art, Music, STEM/Maker
- Gymnasium Additions
- Space for intervention and breakout/collaboration
- Does not align with district long term educational vision

	Primary Schools			
School Name	Hampden Meadows	Primrose Hill	Nayatt	Sowams
Facility Data				
Year Constructed	1956	1954	1954	1962
Facility GSF	49350	36000	34000	32700
2020-2021 Enrollment				
Accessible	Close Building	Elevator 300	Elevator 300	Yes
Secure Entry		Secure Vest	Secure Vest	Secure Vest
Curriculum Opportunities and B				
PreK Classrooms		n/a	n/a	3 Classrooms
Classrooms		13 (+12 CR)	15 (+12 CR)	12
Dedicated Art		Shared	Shared	Reclaimed
Dedicated Music		Reclaimed	Reclaimed	n/a
Dedicated STEM		Reclaimed	Reclaimed	n/a
Technology		n/a	n/a	n/a
Cafeteria		MP	MP	MP
Gymnasium		6300	6300	n/a
Auditorium		n/a	n/a	n/a
Library		Yes	2020	Yes
Special Education		Fair	Fair	Inclusion + Intervention
Appropriate Intervention		1000	1000	n/a
Break-out/Collaboration		1000	1000	n/a
Cost Data				
Repair Cost				
Renovation Cost	n/a	n/a	n/a	n/a
Addition Cost	n/a	n/a	n/a	n/a



OPTION 4 – CONSOLIDATION


Option 5:

- Redistricting
- Grade realignment
- Curriculum and program alignment
- New Construction
- Minimizes operating costs
- Consolidated Services for students
- Can provide Universal PreK that aligns with Bright Stars guidelines
- Aligns with district long term educational vision
- Aligns with teacher certifications

	Primary Schools					
School Name	Hampden Meadows	Primrose Hill	Nayatt	Sowams		
Facility Data						
Year Constructed	1956	1954	1954	1962		
Facility GSF	49350	36000	34000	32700	100,000	109,000
2020-2021 Enrollment						
Accessible	Close Building	Close Building	Close Building	Close Building	New PK-2	New 3-5
Secure Entry						
Curriculum Opportunities and B						
PreK Classrooms						
Classrooms						
Dedicated Art						
Dedicated Music						
Dedicated STEM						
Technology						
Cafeteria						
Gymnasium						
Auditorium						
Library						
Special Education						
Appropriate Intervention						
Break-out/Collaboration						
Cost Data						
Repair Cost						
Renovation Cost	n/a	n/a	n/a	n/a		
Addition Cost	n/a	n/a	n/a	n/a		

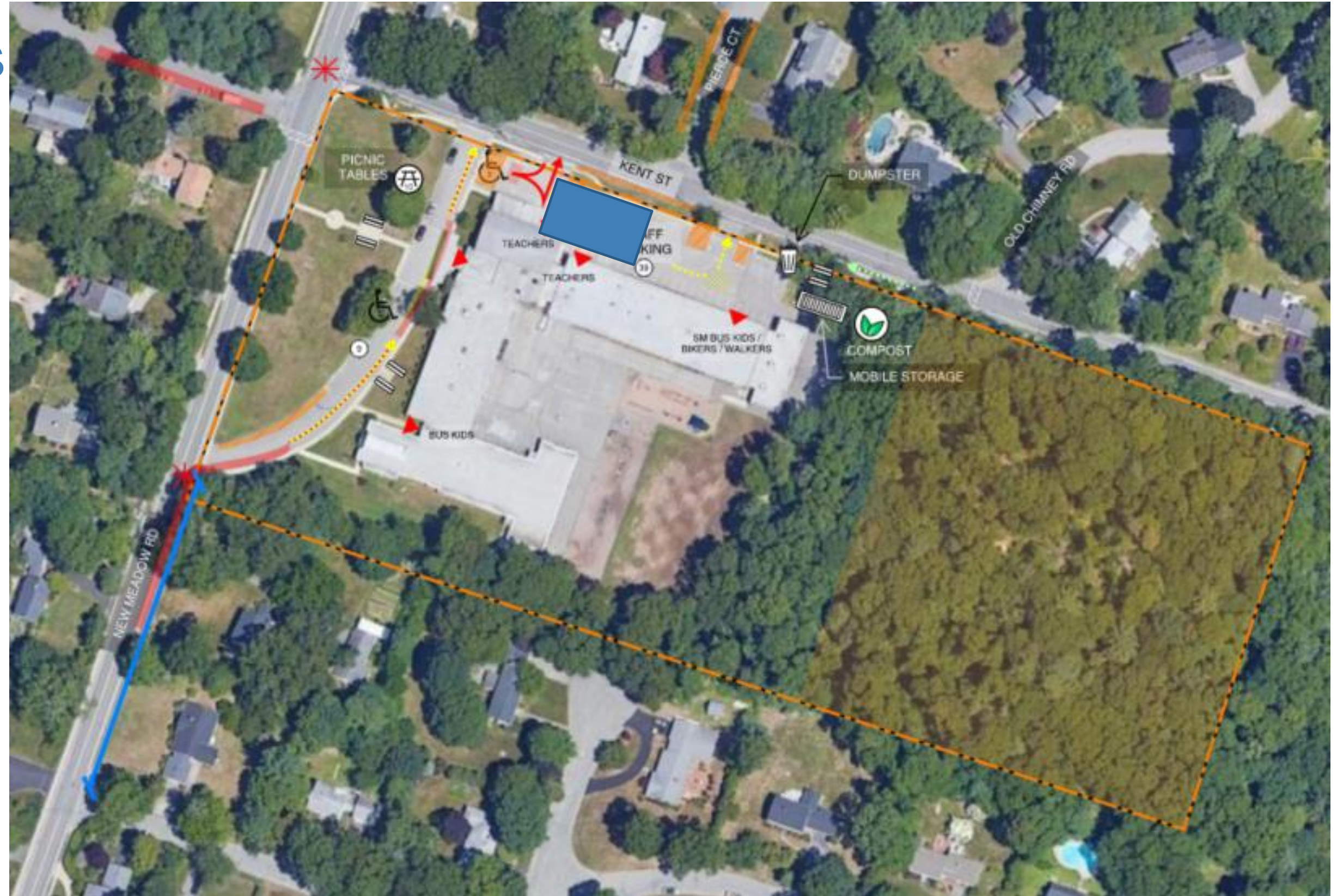


OPTION 4 – CONSOLIDATION

A modern library interior featuring a long wooden bookshelf on the left, a series of blue armchairs with wooden tables in the center, and large windows on the right. The ceiling has exposed wooden beams and modern lighting fixtures. The text "OPPORTUNITIES FOR BUILDING EXPANSION" is overlaid in the center.

OPPORTUNITIES FOR BUILDING EXPANSION

Hampden Meadows



ADDITION EXAMPLE

Primrose Hill



ADDITION EXAMPLE

Primrose Hill



ADDITION EXAMPLE

Nayatt



ADDITION EXAMPLE

Sowams



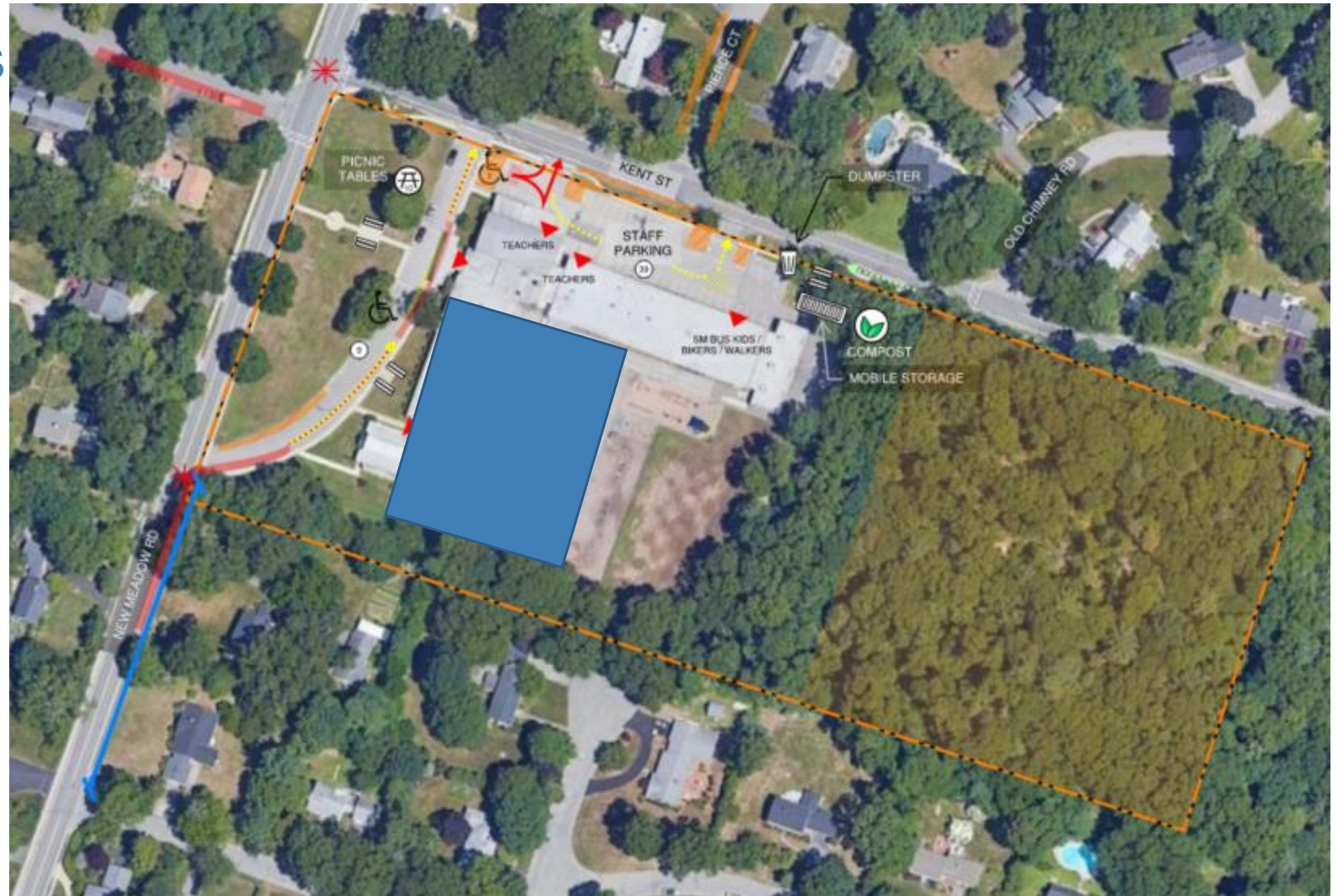
ADDITION EXAMPLE

Primrose Hill



NEW CONSTRUCTION EXAMPLE

Hampden Meadows



NEW CONSTRUCTION EXAMPLE

A modern library interior with a high ceiling, large windows, and a mix of wooden and grey furniture. Bookshelves are visible on the left, and there are several seating areas with blue armchairs and wooden tables. The text "THANK YOU. QUESTIONS?" is overlaid in the center.

**THANK YOU.
QUESTIONS?**










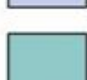
A modern library interior with a high ceiling, large windows, and a grid-patterned carpet. On the left, there are wooden bookshelves filled with books. In the center and right, there are study areas with wooden tables and blue armchairs. The text "CURRENT USE AND OBSERVED EDUCATIONAL DEFICIENCIES" is overlaid in the center in a bold, blue, sans-serif font.

CURRENT USE AND OBSERVED EDUCATIONAL DEFICIENCIES

Hampden Meadows

- Secure vestibule sequence
- Lack of space for intervention
- Multipurpose space limits schedule
- No dedicated break-out/collaboration

COLOR LEGEND

	ADMINISTRATION
	BUILDING SUPPORT
	CIRCULATION
	CLASSROOM
	GYMNASIUM
	MEDIA CENTER
	MEDICAL
	MUSIC/ ART
	SPECIAL EDUCATION
	TEACHER PLANNING



Primrose Hill

- K classrooms used for PreK
- ADA Accessibility Concern
- Secure vestibule sequence
- Lack of space for intervention
- Multipurpose space limits schedule
- No dedicated music, maker
- No dedicated break-out/collaboration

COLOR LEGEND

	ADMINISTRATION
	BUILDING SUPPOI
	CIRCULATION
	CLASSROOM
	GYMNASIUM
	MEDIA CENTER
	MEDICAL
	MUSIC/ ART
	SPECIAL EDUCATION
	TEACHER PLANNING

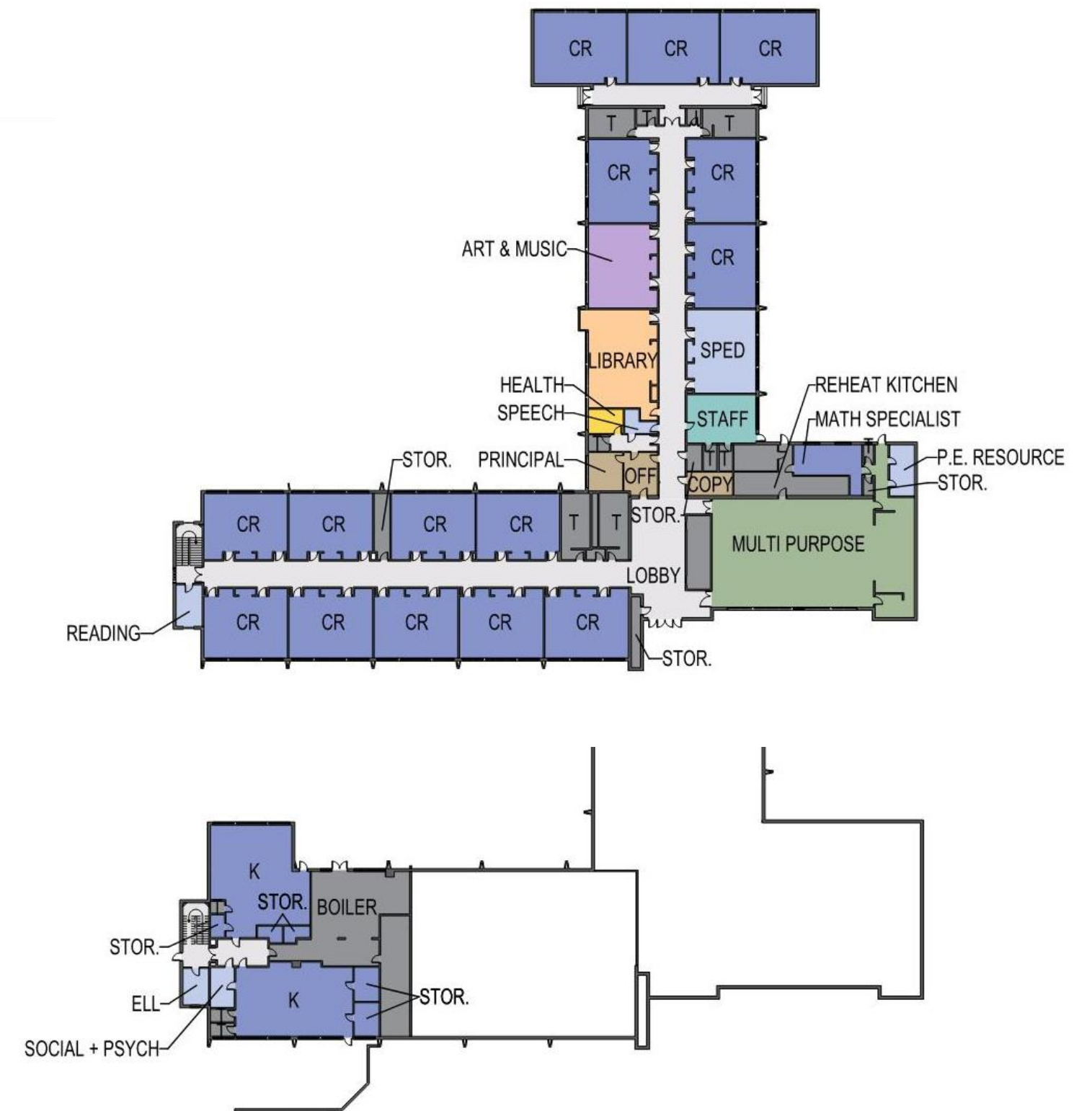


Nayatt

- Library is undersized
- ADA Accessibility Concern
- Secure vestibule sequence
- Lack of space for intervention
- Multipurpose space limits schedule
- No dedicated music, maker
- No dedicated break-out/collaboration

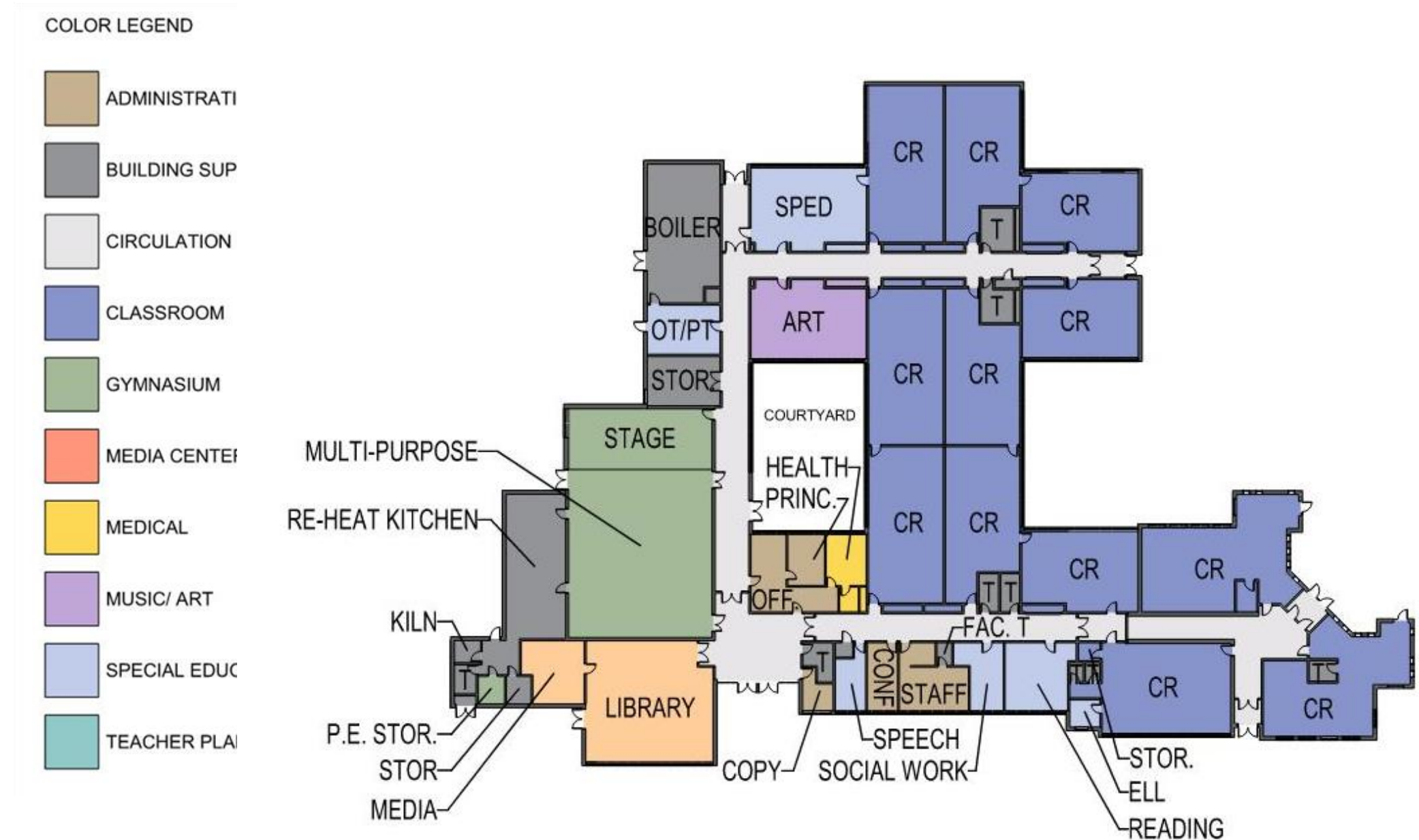
COLOR LEGEND

ADMINISTRATION
BUILDING SUPPORT
CIRCULATION
CLASSROOM
GYMNASIUM
MEDIA CENTER
MEDICAL
MUSIC/ ART
SPECIAL EDUCATION
TEACHER PLANNING



Sowams

- Secure vestibule sequence
- Lack of space for intervention
- Multipurpose space limits schedule
- No dedicated music, maker
- No dedicated break-out/collaboration



High School

- ADA Accessibility Concern
- Secure vestibule sequence
- Lack of space for intervention
- No dedicated break-out/ collaboration
- Traditional Cafeteria vs Commons
- Sprawling Campus on single level
- Departmental model limits interdisciplinary opportunities

COLOR LEGEND

	ADMINISTRATION
	BUILDING SUPPORT
	AUDITORIUM
	CAFETERIA
	CIRCULATION
	CLASSROOM
	GYMNASIUM
	MEDIA CENTER
	MEDICAL
	MUSIC / ART
	SCIENCE CLASSROOM
	SPECIAL EDUCATION
	TEACHER PLANNING
	VOCATIONAL & TECHNICAL



DESIGN APPROACH – DISTRICT MASTER PLAN