

Addendum #03

Date: July 14, 2021

Project: Huntington Middle School Modernization and Addition

The additions, clarifications and corrections herein shall be made to the Project Manual, Drawings and Schedules for the above-referenced project, and shall be included in the scope of work and proposals to be submitted.

NOTE: References made below to the Project Manual and Drawings shall be used as a general guide only. The Bidders themselves shall determine the work affected by the Addendum items.

PROJECT MANUAL ITEMS

Item #01 Section 003100 - ATTACHMENTS

Add. #03 **Revise:** ENVIRONMENTAL & HAZARDOUS MATERIAL REPORT, ATTACHMENT C, page 4 of 4 from: "There is an additional 3,000 Linear Feet...utility tunnels" to: "There is an additional 5,000 Linear Feet... utility tunnels."

Item #02 Section 004100 – BASE BID AND ALTERNATES BID PROPOSAL FORM (PART 1)

Add. #03 **Replace** in its entirety with attached Section 004100 – Base Bid and Alternates Bid Proposal Form. Paragraph 7.02.A "King County" revised to "Cowlitz County"

Item #03 Section 074213 – METAL WALL PANELS

Add. #03 **Revise:** 2.3.B.1 to:
1. Z-Clip: 1 ½" leg and depth to accommodate assembly. Refer to wall assemblies.

Item #04 Section 076200 – SHEET METAL FLASHING AND TRIM

Add. #03 **Add:** 7 and 8 to 1.1:

7. Window, storefront, and louver flashings and trim
8. Miscellaneous metal flashings and trim.

Item #05 Section 088000 – GLAZING

Add. #03 **Revise** 2.5A to:
A. (GL-4) Clear Laminated Glass: ¼ inch, annealed; two 1/8 inch layers with .060 inch clear pvb interlayer.

Item #06 Section 092116 – GYPSUM BOARD ASSEMBLIES

Add. #03 **Add:** 2.6.G

- G. Acoustical Putty Pad. Sound attenuating putty pad.
 - a. Hilti Putty Pad CP 617
 - b. STI SpecSeal SSP Putty Pad
 - c. Substitutions: Section 012500 - Substitution Procedures.

Add: 3.8.E

- E. Install acoustical putty pads per manufacturer's installation instructions at all J-box and back box penetrations.

Item #07 Section 096466 – WOOD ATHLETIC FLOORING

Add. #03 **Add:** 3.8:

3.8 SCHEDULE

- A. Main Gym: Install and finish wood floor per MFMA requirements. (WDF-1)
- B. Existing Wood Floors: Sand and finish (RFW)

Item #08 Section 126613 – BLEACHERS

Add. #03 **Revise:** 2.3.D to:

- D. Rail Type: Rails as required per bank.

Replace: 2.6.C in its entirety with:

- C. End rails: Provide as required by IBC.

Replace: 2.6.D in its entirety with:

- D. Handrails: Meet IBC requirements with vertical aisle center handrails. Handrails to be collapsible, 34 inch high with an intermediate horizontal mid rail.

Add: 2.6.G:

- G. Aisle Steps: Self storing type, in compliance with IBC.

Item #09 Section 23 21 13 Hydronic Piping

Add. #03 2.1 Acceptable Manufacturers, paragraph E., **Add** Victaulic.

Item #10 Section 23 21 13 Hydronic Piping

Add. #03 2.2 Pipe and Fittings – Materials, **Add** the following:

- D. Copper Factory Preinsulated:
 - 1. Type: Factory preinsulated type, for underground installation. Thermacor "Copper-Therm" (or approved).

2. Carrier Pipe & Fittings: Type K copper tubing, conforming to ASTM B88, with brazed joints with brazing alloys melting at or above 1100 deg F. Fittings shall be wrought copper per ASME B16.22 or cast copper per ASME B16.18. Where pipe size shown is not available, provide next larger pipe size.
3. Insulation: Polyurethane foam type, factory installed between carrier pipe and jacket. Insulation properties shall have thermal conductivity no greater than 0.14 (Btu-inch/hr-sq. ft-degrees F), 2 lbs/cubic foot density, and 90-95% closed cell content. Insulation thickness shall be no less than 1.9 inches. Fittings may be factory or field insulated. Joints shall be insulated with pre-cut flexible urethane foam and jacketed with a wrap-around HDPE or PVC sleeve and pressure sensitive 30 mil thick polyethylene and rubberized bitumen tape.
4. Jacket: Extruded white seamless PVC, Class 12454-B per ASTM 1784, type 1, grade 1. Jacket wall thickness shall be equal to ten times the jacket nominal diameter in mils, but no less than 60 mils.
5. End Seals: Shall be factory applied, and sealed to the jacket and carrier pipe. End seals shall be certified as having passed a 20-foot head pressure test. End seals shall be mastic. Field applied end seals shall be installed at each field cut to the piping before continuing with the installation.
6. Expansion/Contraction: Shall be accommodated by using factory prefabricated and preinsulated expansion elbows, z-bends, expansion loops, and anchors. Provide flexible expansion pads at fittings as needed to accept system expansion and contraction. Shall be Contractor or manufacturer selected and designed.
7. Anchor Plate: 1/4" thick brass anchor plate welded to carrier pipe, with 1/4" thick welded water shed rings. Brass anchor plate shall extend beyond insulation casing minimum of 2-1/2". Provide high temperature mastic coating over all components subject to corrosion.
8. Design Drawings: Submit complete plans showing all pipe routings, dimensions of each section, fitting locations, joint locations, and details at connections to building piping systems.

Item #11 Section 23 21 13 Hydronic Piping

Add. #03 2.3 Pipe and Fittings – Applications, **Add** the following:

“E. Hot Water Heating - Belowground: Copper factory preinsulated type.”

Item #12 Section 23 21 13 Hydronic Piping

Add. #03 2.6 Coil Connection Hoses, paragraph B. **Revise** “18 inches” to “12 inches”.

Item #13 Section 25 50 00 IA Facility Controls

Add. #03 Section 2.2 Basic System, **Revise** paragraph A. to read as follows:

“A. General: The system shall be a distributed processing type direct digital control (DDC) system. System shall provide complete stand-alone temperature control/monitoring and energy management for this project, using a network of various independent controllers, sensors and associated devices interconnected in a communicating network. Controllers shall be of the Honeywell Bacnet Spyder product line, and associated accessories, installed in similar fashion to other installations within the school district, and integrated into the district supervisor located at the Kelso High School. Provide upgrade license at the supervisor if required.”

Item #14 Section 260500 – Basic Materials and Methods

Add. #03 **Delete** Paragraph 2.6, sub-paragraph M.

Item #15 Section 265500 – Performance Lighting System

Add. #03 **Add** to Paragraph 2.2, sub-paragraph A.: “ETC ColorSource Raceway.”

Revise Paragraph 2.2, A. sub-paragraph 2 to read.: “Connectors, Power: Flush twist lock 20 amp NEMA grounded 120V. Connectors, Low Voltage: DMX.”

Revise Paragraph 2.3, A. “Ovation P-56F” to read: “Ovation P-56FC”.

Revise Paragraph 2.3, B. “Ovation P-56F” to read: “Ovation E-910FC”.

Item #16 Section 281300 – Electronic Access Control

Add. #03 **Revise** “S2 Net VRx Enterprise software” to read: “Lenel S2 NetBox Enterprise Controller with VM Software” in Paragraph 1.1, sub-paragraph A.

Revise “exacqVision” to read: “Lenel S2 VRx” in Paragraph 2.5, B. sub-paragraph 9.

Item #17 Section 282300 – Closed Circuit Television System (CCTV)

Add. #03 **Revise** “ExacqVision” to read: “Lenel S2 NetBox VRx” in Paragraph 1.4, A., 4., a, 1).

Revise “PNM-9000VQ” to read: “PNM-9002VQ” in Paragraphs 2.11, A, 1 and 2.

Revise “PNM-9020V” to read: “PNM-9022V” in Paragraph 2.11, A, 3.

Revise “Wallace Elementary” to read: “Huntington Middle School” in Paragraph 3.3, D, 7, c.

Item #18 Approval of Substitutions

Add. #03 The following is a list of approved manufacturers which may be substituted for those specified in the specifications.

This approval is an approval of quality only. No attempt has been made to check each material as to special features, capacities or physical dimensions especially required by this project. It shall be the responsibility of the supplier, manufacturer and contractor to check all requirements before submitting for final approval. Final approval of exact features, sizes, capacities, etc., all of which must match materials indicated/specified, will be determined when submitted during construction period. Certain approvals are subject to conditions as noted.

Section	Product/Manufacturer	Comments
096466	Connor Rezill Base SP-11	Accepted.
098400 2.2.B-C	CSI Soundcore Surface Plus 1"; CSI Soundcore Surface Plus 2"	Accepted.
265000	C4 – Birchwood	Approved.
265000	EP – SolasRay	Approved.
265000	X, XD, XG – Emergi-Lite	Approved with Self Diagnostics.
265000	K – Emergi-Lite	Approved.
265000	L1, L3, L4, L5, S1 – tgs	Not Approved. Metalux FP is approved.
265000	R1 - tgs	Not Approved. Halo approved if available in 277V.
265000	Twin Head – Emergi-Lite	Approved.
265500	Theatrical Lighting Cage, Pipe & Junction Boxes - SSRC	Approved.
265500	Theatrical Lighting Controls – Cooper	Approved.
265500	Theatrical Lighting – Strand	Approved.

DRAWING ITEMS

CIVIL

Item #C01 C101 – Existing Conditions and Demo Plan
Add. #03 **Revise** service yard per the attached C101.

Item #C02 C404 – Chiller Pad Grading Details
Add. #03 **Revise** service yard per the attached C404.

Item #C03 C501 – Utility Plan
Add. #03 **Revise** service yard per the attached C501

Item #C04 C605 – Bedding and Trenching Standard Details
Add. #03 **Add** WSDOT Catch Basin and Grate Details as shown on the attached C605.

HAZMAT

Item #H01 H100 - LEVEL 0 - OVERALL PLAN HAZMAT
Add. #03 **Revise:** HAZARDOUS MATERIAL LEGEND hatch description from “VINYL TILE (VT) AND MASTIC ON CONCRETE” to “VINYL TILE (VT) AND MASTIC ON CONCRETE 8,000 SF (THIS SHEET ONLY)”

Revise: HAZARDOUS MATERIAL LEGEND hatch description from “VINYL SHEETING (VS) ON CONCRETE” to “VINYL SHEETING (VS) ON CONCRETE 144 SF (THIS SHEET ONLY)”

Delete: HAZARDOUS MATERIAL LEGEND hatch pattern and description “VINYL TILE AND MASTIC UNDER CARPET ON CONCRETE, 2592 SF (THIS SHEET ONLY)”

Item #H02 H101 - LEVEL 1 - OVERALL PLAN HAZMAT
Add. #03 **Revise:** HAZARDOUS MATERIAL LEGEND hatch description from “VINYL TILE (VT) AND MASTIC ON CONCRETE” to “VINYL TILE (VT) AND MASTIC ON CONCRETE 1,721 SF (THIS SHEET ONLY)”

Delete: HAZARDOUS MATERIAL LEGEND hatch pattern and description “VINYL SHEETING (VS) ON CONCRETE”

Revise: HAZARDOUS MATERIAL LEGEND hatch description from “VINYL TILE AND MASTIC UNDER CARPET ON CONCRETE, 2592 SF (THIS SHEET ONLY)” to “VINYL TILE AND MASTIC UNDER CARPET ON CONCRETE, 11,903 SF (THIS SHEET ONLY)”

Item #H03 H102 - LEVEL 2 - OVERALL PLAN HAZMAT

Add. #03 **Delete:** HAZARDOUS MATERIAL LEGEND hatch pattern and description
"VINYL TILE (VT) AND MASTIC ON CONCRETE"

Delete: HAZARDOUS MATERIAL LEGEND hatch pattern and description
"VINYL SHEETING (VS) ON CONCRETE"

Revise: HAZARDOUS MATERIAL LEGEND hatch description from "VINYL
TILE AND MASTIC UNDER CARPET ON CONCRETE, 2592 SF (THIS SHEET
ONLY)" to "VINYL TILE AND MASTIC UNDER CARPET ON CONCRETE,
2,687 SF (THIS SHEET ONLY)"

DEMOLITION

Item #AD1 AD100A - LEVEL 0 AREA A - DEMO FLOOR PLAN

Add. #03 **Revise** per sketch **ADD-001**.

Item #AD2 AD101A - LEVEL 1 AREA A - DEMO FLOOR PLAN

Add. #03 **Revise** per sketch **ADD-002**.

STRUCTURAL

Item #S01 S203 – BUILDING 1 STRUCTURAL WALL ELEVATIONS

Add. #03 **Add** text callout to detail 7/S203 at existing mech louver above door between
Level 0 and Level 1, between Grids xN and xO to read "PROVIDE METAL
STUD INFILL FRAMING PER 5/S025 AND 10/S025"

ARCHITECTURAL

Item #A01 A010 - ASSEMBLIES

Add. #03 **Revise:** WALL TYPE GENERAL NOTES, note 7 as follows:
"7. AT ACOUSTIC WALLS, PROVIDE ACOUSTICAL PUTTY PADS ON
ALL J-BOXES AND BACK BOXES."

Item #A02 A011 – ASSEMBLIES - INTERIOR

Add. #03 **Revise:** WALL TYPE GENERAL NOTES, note 7 as follows:
"7. AT ACOUSTIC WALLS, PROVIDE ACOUSTICAL PUTTY PADS ON
ALL J-BOXES AND BACK BOXES."

Item #A03 A101A – LEVEL 1 AREA A – FLOOR PLAN

Add. #03 **ADD** hexagonal window tag symbol with text “W19” at window along north wall of room 138A Waiting, just east of grid x8.

Item #A04 A102A – LEVEL 2 AREA A – FLOOR PLAN

Add. #03 **Revise** text in hexagonal window tag symbol just northeast of grid intersection xA/x10 from “W18” to “W20”.

Item #A05 A400 – FINISH & COLOR SCHEDULE

Add. #03 **Revise** per attached sheet **A400**.

Item #A06 A401 – LEVEL 1 AREA A – FINISH PLAN

Add. #03 **Revise** room tag for STAGE -143 flooring designation from “(E)” to “RFW”.

Item #A07 A621 – WINDOW TYPES

Add. #03 **Revise** text in hexagonal window tag symbol under the 48’-0” x 13’-0” window from “W18” to “W20”.

Item #A08 A631 – DETAILS-WINDOWS

Add. #03 **Add** a text note and arrow pointing to the exterior trim piece spanning between the two window frames to details 12 and 16 reading:
“PRFN METAL, MATCH WINDOW COLOR”

MECHANICAL

Item #M01 M200A – BUILDING 1 AREA A - FOUNDATION PLAN - PLUMBING

Add. #03 **Revise** per sketch **ADM-006**.

Item #M02 M300A – LEVEL 0 BUILDING 1 FLOOR PLAN - PLUMBING

Add. #03 **Revise** per sketch **ADM-007**.

Item #M02 M001 – LEGEND AND NOTES

Add. #03 Mechanical General Notes, **Add** the following note:

“44. THERMOSTAT/SENSOR LOCATIONS: PRIOR TO ROUGH-IN, REVIEW SPACES WITH ARCHITECT/ENGINEER TO DETERMINE EXACT LOCATION OF DEVICES. FURRED OR FRAMED WALLS ARE THE PREFERRED LOCATIONS. WHERE INSTALLED ON EXISTING CONCRETE WALLS, CONTROLS CONTRACTOR SHALL PROVIDE SURFACE METAL RACEWAY SYSTEM (I.E. WIREMOLD). SEE DIVISION 26 05 00 SPECIFICATIONS FOR COMPLETE REQUIREMENTS.”

ELECTRICAL

Item #E01 ED100 – LEVEL 0 – AREA A – DEMOLITION PLAN

Add. #03 **Add** Electrical Demolition Note as follows:

“REMOVE ALL RACEWAY & OUTLET BOXES IN STUD WALLS TO BE DEMOLISHED. PROVIDE BLANK COVER PLATE OVER EXISTING OUTLET BOXES IN CONCRETE WALLS & CEILINGS TO BE ABANDONED IN PLACE & FILL WITH FIBERGLASS SOUND ATTENUATING BATT INSULATION. FOR BIDDING PURPOSES, ASSUME 340 DOUBLE GANG OUTLET BOXES FOR ALL LEVELS.”

Item #E02 E100 – ELECTRICAL SITE PLAN

Add. #03 **Add** light fixture Type FLP mounted on southwestern A4 light at new walkway west of Auxiliary Gym addition; **ADD** notation: “HOMERUN TO HAG-6 THRU LOW VOLTAGE RELAY PNL LCP3, RELAY 5 (TIME CLOCK CONTROLLED).”

Item #E03 E200A – LEVEL 0 BUILDING 1 – AREA A – LIGHTING PLAN

Add. #03 **Add** light fixture Type FLV 3-feet south of gridline xC mounted on top of canopy and aimed at vertical signage (see A202); **ADD** notation: “HOMERUN TO HC-34 THRU LOW VOLTAGE RELAY PNL LCP2, RELAY 9 (TIME CLOCK CONTROLLED)”.

Add to Bubble Note 4: “RELAY 9 – FLOODLIGHT.”

Item #E04 E200C – LEVEL 0 BUILDING 1 – AREA C – LIGHTING PLAN

Add. #03 **Add** to Bubble Note 4: “RELAY 5 – FLAGPOLE LIGHT”.

Item #E05 E201A – LEVEL 1 BUILDING 1 – AREA A – LIGHTING PLAN

Add. #03 **Add** to Bubble Note 4: “SEE DETAIL 7, SHEET E701”. Note, detail to be added per attached sketch **ADE-005**.

Add fixture designation R1 at circle outside of Boys 111 in Corridor 140.

Item #E06 E300C – LEVEL 0 BUILDING 1 – AREA C – POWER & SYSTEMS PLAN

Add. #03 **Add** microphone input on west wall near center court in Auxiliary Gym 061.

Add motor rated toggle disconnect at ceiling for projection screen in Auxiliary Gym 061.

Add fused disconnects for motorized backboards (quantity of 2) and motorized matt hoist (quantity of 2) in Auxiliary Gym 061.

Revise location of motorized screen controller to east side of space adjacent to sound system controls in Auxiliary Gym 061.

Revise Bubble Note 9 to read: “GYM AV SYSTEM CONTROL PANEL WITH LEXAN SHIELD FOR CONTROL OF PROJECTOR, PROJECTOR LIFT, SOUND SYSTEM, & VIDEO INPUTS, PROVIDE (1)1”C WITH (1) CAT 6 TO A/V RACK IN RM 065”.

Revise Bubble Note 20 to read: “FLUSH MOUNT ENCLOSURE IN CMU WITH ½”C TO IDF, PROVIDE WIREGUARD FOR CLOCK/SPEAKER”.

Item #E07 E301A – LEVEL 1 BUILDING 1 – AREA A – POWER & SYSTEMS

Add. #03 **Revise** Bubble Note 25 to read: “CONCRETE WALL, MOUNT DEVICES IN WIREMOLD 4000, SEE DETAIL 8/E701.” Note, detail to be added per attached sketch **ADE-006**.

Add power and single data connection for Electronic Readerboard under Alternate Bid #7 on circuit G1-23; provide single gang NEMA 3R non-metallic boxes on building exterior approximately 18-ft south of gridline xC and 33-ft above finished grade (verify connection point with manufacturer’s shop drawing); coredrill concrete wall and route ½”C – power + ½”C – CAT 6 up to ceiling of Stage 143 and across to Panel ‘G1’ and IDF.

Revise AV-I input plate shown on Island in Science Classroom 116 to be located in SMR on south wall and **add** additional length of SMR as shown, see 8/E701.

Add Note at Wiremold on east wall in Science Classroom 116 to read: “PROVIDE LARGE CAPACITY DIVIDED ENTRANCE END FITTING FOR WIREMOLD AT NORTH END, EXTEND CONDUITS INTO FRAMED WALL & ROUTE TO ACCESSIBLE SPACE, ¾”C – POWER + 1.25”C – TELECOMMUNICATIONS.”

Item #E08 E301B – LEVEL 1 BUILDING 1 – AREA B – POWER & SYSTEMS

Add. #03 **Revise** Bubble Note 25 to read: “CONCRETE WALL, MOUNT DEVICES IN WIREMOLD 4000, SEE DETAIL 8/E701.” Note, detail to be added per attached sketch **ADE-006**.

Add Note in Classroom 101 at southeast corner of room to read: “UNDER BASE BID, PROVIDE FIBER READY FULL CAPACITY FLAT ELBOW & ROUTE WIREMOLD UP WALL TO CEILING, PROVIDE DIVIDED ENTRANCE END FITTING, EXTEND CONDUITS ABOVE CEILING & ROUTE TO ACCESSIBLE SPACE, ¾”C – POWER + 1.25”C – TELECOMMUNICATIONS.”

Add Note in Classroom 101 at southeast corner of room to read: “UNDER ALT BID, PROVIDE DIVIDED RADIUS CORNER TO CONNECT TO RACEWAY ON EAST WALL.”

Item #E09 E302A – LEVEL 2 BUILDING 1 – AREA A – POWER & SYSTEMS

Add. #03 **Revise** Bubble Note 8 to read: “CONCRETE WALL, MOUNT DEVICES IN WIREMOLD 4000, SEE DETAIL 8/E701.”

Add three (3) uncontrolled and three (3) controlled receptacles on east wall in Science Classroom 216 (similar to Classroom 116). Circuit controlled receptacles to M-22; circuit uncontrolled receptacles to M-24. **Delete** split wired receptacle.

Revise AV-I input plate shown on Island in Science Classroom 216 to be located in SMR on south wall and **add** additional length of SMR as shown, see 8/E701.

Item #E10 E302B – LEVEL 2 BUILDING 1 – AREA B – POWER & SYSTEMS

Add. #03 **Revise** Bubble Note 8 to read: “CONCRETE WALL, MOUNT DEVICES IN WIREMOLD 4000, SEE DETAIL 8/E701.”

Item #E11 E400 – LEVEL 0 BUILDING 1 – FIRE ALARM & SECURITY PLAN

Add. #03 **Add** access control system card reader at Door 060C in Vestibule 060. Mount on bollard below ADA push button.

Item #E12 E402

Add. #03 **Add** Electrified Door Hardware Schedule, attachment **ADE-007**.

Item #E13 E403 – BLDGS 2, 3 & PORTABLE – FIRE ALARM, SECURITY & SYSTEMS PLANS

Add. #03 **Add** intercom call station at north exterior door from Hall C-04 to exterior at Building 2.

Item #E14 E501 – PANEL SCHEDULES

Add. #03 Panel HAG: **Revise** circuit 6 description to read: “LTS – FLAGPOLE”.

Panel HC: **Revise** circuit 34 description to read: “LTS – CANOPY FLOOD”.

Item #E15 E503 – PANEL SCHEDULES

Add. #03 Panel G1: **Revise** circuit 23 description to read: “READERBOARD” under Alternate Bid #7.

Item #E16 E600 – LIGHT FIXTURE SCHEDULE

Add. #03 **Add** Type FLP as follows:

“FLP: LED FLOODLIGHT, VERTICAL MEDIUM DISTRIBUTION, WITH ANTI GLARE LOUVER, ADJUSTABLE MOUNTING BRACKET FOR MOUNTING TO 4” ROUND STEEL POLE. GRAPHITE FINISH.

LUMENS: 8000 MINIMUM

MANUFACTURER: LIGMAN, ODESSA UOD-50171 WITH POLE CLAMP.

LAMP: LED, 4000K.

VA/W: 75VA / 70W.

VOLTAGE: 277V.”

Add Type FLV as follows:

“FLV: LED FLOODLIGHT, VERTICAL NARROW DISTRIBUTION, WITH YOKE MOUNTING BRACKET. PROVIDE STAINLESS STEEL CHANNEL STRUT SUPPORT & HARDWARE ON TOP OF CANOPY. GRAPHITE FINISH.

LUMENS: 8000 MINIMUM

MANUFACTURER: LIGMAN, ODESSA UOD-50171 WITH YOKE MOUNT. .

LAMP: LED, 3000K.

VA/W: 75VA / 70W.

VOLTAGE: 277V.”

Item #E17 E701 – ELECTRICAL DETAILS

Add. #03 **Add** Detail 7 – STAGE LIGHTING DETAILS, per attachment **ADE-005**.

CONTRACTOR QUESTIONS:

1. Per note 7 on A010 and A011 "provide acoustical putty pads on all outlets...." Please clarify if this applies to all electrical boxes such as low voltage, control, speaker/intercom boxes, not just power outlets. Also, does this apply to all outlets on the project or just new construction outlets? Demo drawings do not appear to show demolition for existing boxes and electrical drawings don't reference any putty pad locations outside of the architectural drawing note. Reference Paragraph 2.6 M of 26 0500 Basic Materials and Methods.
Refer to addendum #03 revision of sheet A010 and A011 Wall Type General Notes and revisions to section 092116 for clarification of Putty Pad requirements. Acoustical Putty Pads are required at all J-boxes and back boxes, such as low voltage, control, speaker/intercom boxes, not just power outlets. This is required at acoustical walls as defined in the Wall Type General Notes on sheets A010 and A011 of the bid documents.
2. Please Verify the gauge size of the Z-Clips. Per the spec, the size is called out for 16 ga and on drawings is called out for 18ga.
18 GA per drawings. See addendum 03 revision to section 074213
3. Please Verify the dimension of the Z-Clips. Sheet A010 is calling out for 6" tall, however, on detail pages it is scaled (3"=1'-0") as 4". Please confirm.
6" Z-girts per Wall Assembly Drawings.
4. Please confirm how the Z-Clips will be attached to the 6" Metal Stud Framing, how the Hat Channel will be attached to the Z-clips, and how the Metal Panels will be attached? Please also confirm the type, size, and quantity of fasteners needed at each metal stud location in that area.
Refer to spec section 074213.2.4.C of the bid documents for attachment requirements of metal panels to the hat channels. Provide (2) #10 self-tapping screws to attach the hat channel at each Z-clip and (2) #10 self-tapping screws, 4" gage, size screw so threads completely penetrate metal stud flange.
5. Please clarify quantities shown in Hazmat drawings and Hazmat report.
Refer to addendum #03 revisions to H100-H102 for clarity on quantities between the Hazmat drawings and Hazmat report.
6. Please clarify Aisle Railing requirements at the bleachers. Requirements are inconsistent with approved products and manufacturers.
Refer to addendum #03 revisions to aisle railings in Section 126613-BLEACHERS
7. The Bid form indicates the Bidder agrees to pay PW rates for King County. Kelso is Cowlitz County and King is Seattle so the rates could be much higher. Does this apply?
The rates must be applied as per local Prevailing Wage rates. See addendum #03 for updated Bid Form indicating Cowlitz County.
8. There are windows specified with Heat Strengthened / Laminated glass type GL-4. Heat strengthened or tempered glass is not recommended on laminated lites
Refer to revisions made to glass type GL-4 in spec section 088000.
9. Base bid window for "Special Ed 212A" – we couldn't find this anywhere so believed to be an omission – may be referring to Special Ed 121A (labeled W1)?
121A is correct.
10. STC rating : to clarify if only based on center-of-glass is acceptable (STC of the whole window is highly dependent on specific configuration/size tested, glass info readily available)
Intent is for STC rating of the opening.
11. Window 19 not shown on plans – potentially waiting area 138A/Vestibule?
Window tag added to floor plan.

12. There are 2 window 18s on the schedule
Second W18 revised to W20
13. Alternate 1: we (and bidders) were only able to find 19 of 24 new window locations on plans.
Alternate and base bid windows together total 24.
14. We can only provide 4" restrictors provided for all outswing operable windows (3" specified)
4" acceptable
15. Importance of frame depth specified? (our frames are 4.5" deep)
4.5" operable is acceptable
16. Warranty of only five years provided for Laminated Glass (10 yrs specified)
Provide 10 year warranty specified
17. Roller Shades to be provided by others
Confirmed
18. W5: a "mullion by manufacturer" shown in drawings detail 12. Cascadia does not provide this type of detail so cladding would be necessary over the structure between windows. Also on large W18
Prefinished sheet metal flashing to be used, refer to detail revisions.

Attachments:

Specifications:

SECTION 004100 – BASE BID AND ALTERNATES BID PROPOSAL FORM (PART 1)

Drawings:

C101, C404, C501, C605, ADD-001, ADD-002, A400, ADM-006, ADM-007, ADE-005, ADE-006, ADE-007

END OF ADDENDUM #03

KELSO SCHOOL DISTRICT # 458
The Kelso School District Business Office
601 Crawford Street
Kelso, WA 98626

**Project No. 2021-XX - Huntington Middle School Modernization and Auxiliary
Gym and Vestibule Addition**

BASE BID AND ALTERNATES BID PROPOSAL FORM (Part 1)

(BASE BID AND ALTERNATES BID DUE 3:00 P.M., Monday, July 19, 2021)

1.01 To: KELSO SCHOOL DISTRICT # 458
The Kelso School District Business Office
601 Crawford Street
Kelso, WA 98626
ATTN: Scott Westlund

1.02 SUBMITTED BY (BIDDER TO ENTER NAME AND ADDRESS):

- A. BIDDER'S NAME _____
- B. ADDRESS: _____
- C. CITY, STATE, ZIP: _____

1.03 OFFER:

Having carefully examined the Project Manual and the Drawings entitled Huntington Middle School, as well as the premises and conditions affecting the Work, the undersigned represents that it has the personnel, qualifications, expertise and means to complete the Work in a timely manner and proposes to furnish all labor, equipment, and materials to perform the Base Bid Work required in strict accordance with the proposed Contract Documents for the following amount:

Amount shall be shown in both words and figures. In case of discrepancy, the amount shown in figures shall govern.

2.01 THE BASE BID AMOUNT INCLUDES ANTICIPATED UNIT PRICE WORK (SEE SECTION 012400) AND ALL OTHER WORK SHOWN ON THE DRAWINGS AND SPECIFIED IN THE BIDDING AND CONTRACT DOCUMENTS

TOTAL BASE BID:

DOLLARS (\$_____)

2.02 UNIT PRICES:

The Base Bid includes amounts calculated based on multiplying both of the following Unit Prices by the estimated quantities set forth in the Contract Documents (refer to sheets C401, H100, H101, H102, and Hazmat Report dated 3/29/2021). See Section 012400 for more information.

Unit Price No. 1 (Authorized Overexcavation): \$_____ per cubic yard in place

Unit Price No. 2 (Authorized Fill): \$_____ per cubic yard in place

Unit Price No. 3 (Authorized Vinyl Tile Removal): \$_____ per square foot

Unit Price No. 4 (Authorized Vinyl Sheeting Removal): \$_____ per square foot

Unit Price No. 5 (Authorized TSI Pipe Removal): \$_____ per linear foot

2.03 OVERHEAD AND PROFIT:

All of the above bid prices include overhead and profit.

2.04 SALES TAX:

None of the above bid prices include State, County, or City Sales Tax.

2.05 TRENCH EXCAVATION SAFETY SYSTEM INCLUDED ABOVE:

Included in the above Base Bid is an amount for Trench Excavation Safety for any trenching exceeding a depth of four feet. (In accordance with Chapter 39.04 RCW and WAC 296-155-650, all costs for adequate trench safety systems are required to be identified in this Bid.) The Bidder certifies that the following amount is included in the Base Bid for Trench Excavation Safety Provisions. **If no** amount is entered, the Owner will presume that the Bidder represents that there are no Trench Excavation Safety costs for this Project.

Trench Safety System DOLLARS (\$) _____)

3.01 ALTERNATE BIDS:

The undersigned proposes to perform the Alternate Bid Work called for in the following Alternates, as shown on the Drawings and further described in Section 012300 of the Project Manual, for the following additions to the Base Bid, which include all costs associated with the Alternate, including overhead and profit:

<u>Additive/Deductive Alternates</u>		Add/Deduct
Alternate Bid No. A1:	New Exterior Window Openings	\$ _____
Alternate Bid No. A2:	Boiler Room Ceiling	\$ _____
Alternate Bid No. A3:	Power at Classroom Exterior Walls	\$ _____
Alternate Bid No. A4:	Existing Gymnasium A/V System	\$ _____
Alternate Bid No. A5:	Electrical/Low Voltage Work at Shop, Fieldhouse and Portables	\$ _____
Alternate Bid No. A6:	Existing Gym Scoreboard and Shot Clock	\$ _____
Alternate Bid No. A7:	Exterior Electronic Reader Board	\$ _____
Alternate Bid No. A8:	Theatrical Lighting at Stage	\$ _____
Alternate Bid No. A9:	Cyclorama and Stage Curtains	\$ _____
Alternate Bid No. A10:	Ceiling Diffusing Panels at Music Room	\$ _____
Alternate Bid No. A11:	Wall Acoustic Panels at Cafeteria	\$ _____
Alternate Bid No. A12:	VWC Graphics	\$ _____
Alternate Bid No. A13:	Delete Air Conditioning	\$ _____

3.02 OVERHEAD AND PROFIT:

All of the above Alternate bid prices include overhead and profit.

3.03 SALES TAX:

None of the above Alternate bid prices includes State, County, or City Sales Tax that will be paid on the Contract Sum.

4.01 REINSTATEMENT OF ALTERNATE BIDS:

The undersigned agrees that the Owner has the right to reinstate, at the bid price, any or all of the Alternate Bids not originally incorporated into the Contract, provided the Owner so notifies the undersigned within forty-five (45) calendar days after the date of Contract execution, or such longer period identified in the Bidding Documents.

5.01 SUBCONTRACTOR LISTING:

THE BIDDER SHALL LIST SUBCONTRACTORS ON THE SUBCONTRACTOR PROPOSAL FORM (PART 2). IF SUBCONTRACTORS VARY WITH BID ALTERNATES, THE BIDDER MUST SO INDICATE ON THE SUBCONTRACTOR PROPOSAL FORM.

6.01 CONTRACT, BOND, INSURANCE CERTIFICATES:

If the undersigned is notified of the acceptance of this Bid within forty-five (45) calendar days after the time set for opening of bids (the "Bid Date"), or such longer period identified in the Bidding Documents, it agrees to execute and deliver to the Owner the Agreement Between Owner and Contractor in the form provided by the Owner for a compensation computed from the above sum and any Alternates selected by the Owner and to furnish the bond, insurance certificates and other documents as required by the Contract Documents within ten (10) days after issuance of the Letter of Intent to Award a Contract.

6.02 TIME OF COMPLETION:

The undersigned agrees, if awarded the Contract, to achieve Substantial Completion of the Work as described in the Standard Form of Agreement Between the Owner and Contractor, AIA Document A101-2017.

6.03 LIQUIDATED DAMAGES:

The Bidder, by submitting its Bid, represents that the liquidated damages specified in the Contract Documents are a reasonable estimate of the costs and damages to the Owner that would be incurred if the Contractor fails to achieve Substantial Completion within the Contract Time.

6.04 BID SECURITY:

5% of the Base Bid

The undersigned further agrees that the Bid security accompanying this Bid shall be left in escrow with the Owner. The Bid security constitutes a pledge that the Bidder will, if issued a Letter of Intent to Award, enter into the Contract with the Owner on the form provided and on the terms stated in its Bid and will furnish the payment and performance bonds, certificates of insurance, and all other documents required in the Contract Documents. Should the Bidder fail or refuse to enter into the Contract or fail or refuse to furnish such documents, the amount of the Bid security shall be forfeited to the Owner as liquidated damages, and not as a penalty.

6.01. APPRENTICES

The undersigned understands that, pursuant to RCW 39.04.320, the Contractor will be required to achieve apprentice participation of at least fifteen percent (15%) of the total construction labor hours and that further information on this requirement is contained in the statute and the Contract Documents.

7.01. ADDENDA:

Receipt of the following addenda is hereby acknowledged and all costs of the Work therefore have been included in the proposal.

Addendum No. _____ Dated _____

Addendum No. _____ Dated _____

Addendum No. _____ Dated _____

Addendum No. _____ Dated _____

7.02 AS A CONDITION OF SUBMITTAL OF THIS BID, THE CONTRACTOR CERTIFIES THAT:

- A. It will comply with the current Cowlitz County prevailing wages pursuant to RCW 39.12. See Washington State Prevailing Wage Rates and Benefit Code Key.
- B. It is a registered contractor with RCW 18.27.
- C. It will comply with RCW 70.92, Aged and Physically Handicapped.
- D. It will comply with RCW 26A.400.330, Crimes Against Children.
- E. It has a current state unified business identifier number.
- F. It has industrial insurance coverage for its employees working in Washington as required in Title 51 RCW
- G. It has an employment security department number as required in Title 50 RCW.
- H. It has a state excise tax registration number as required in Title 82 RCW
- I. It is not disqualified from bidding on any public works contract under RCW 39.06.010 (unregistered or unlicensed contractors) or RCW 39.12.065(3) (prevailing wage violations).
- J. Within the three-year period immediately preceding the Bid Date, the Bidder has not been determined by a final and binding citation and notice of assessment issued by the Department of Labor and Industries or through a civil judgment entered by a court of limited or general jurisdiction to have willfully violated, as defined in RCW 49.48.082, any provisions of chapter 49.46, 49.48 or 49.52 RCW.

The undersigned certifies under penalty of perjury under the laws of the State of Washington that the foregoing representations are true and correct.

8.01 BID FORM SIGNATURES:

THE UNDERSIGNED CERTIFIES THAT THEY ARE AUTHORIZED TO BIND THE LEGAL ENTITY MAKING THIS PROPOSAL.

Date: _____

Name of Firm: _____

Bidder's Signature: _____

Bidder's Printed Name: _____

Title: _____

Street Address: _____

City: _____

State: _____ Zip Code: _____

Telephone Number: _____

STATE OF WASHINGTON CONTRACTOR'S NO: _____

FEDERAL ID NO: _____

DEPARTMENT OF LABOR & INDUSTRY REG. NO: _____

WASHINGTON STATE DEPARTMENT OF REVENUE NO: _____

8.02 NOTE: IF A BIDDER IS A CORPORATION, WRITE STATE OF INCORPORATION; AND IF A PARTNERSHIP, PROVIDE FULL NAMES AND ADDRESSES OF ALL PARTNERS BELOW.

A. (If Corporation) – State of Incorporation: _____

B. (If Partnership) – List all Partners:

1. Name: _____

a. Address: _____

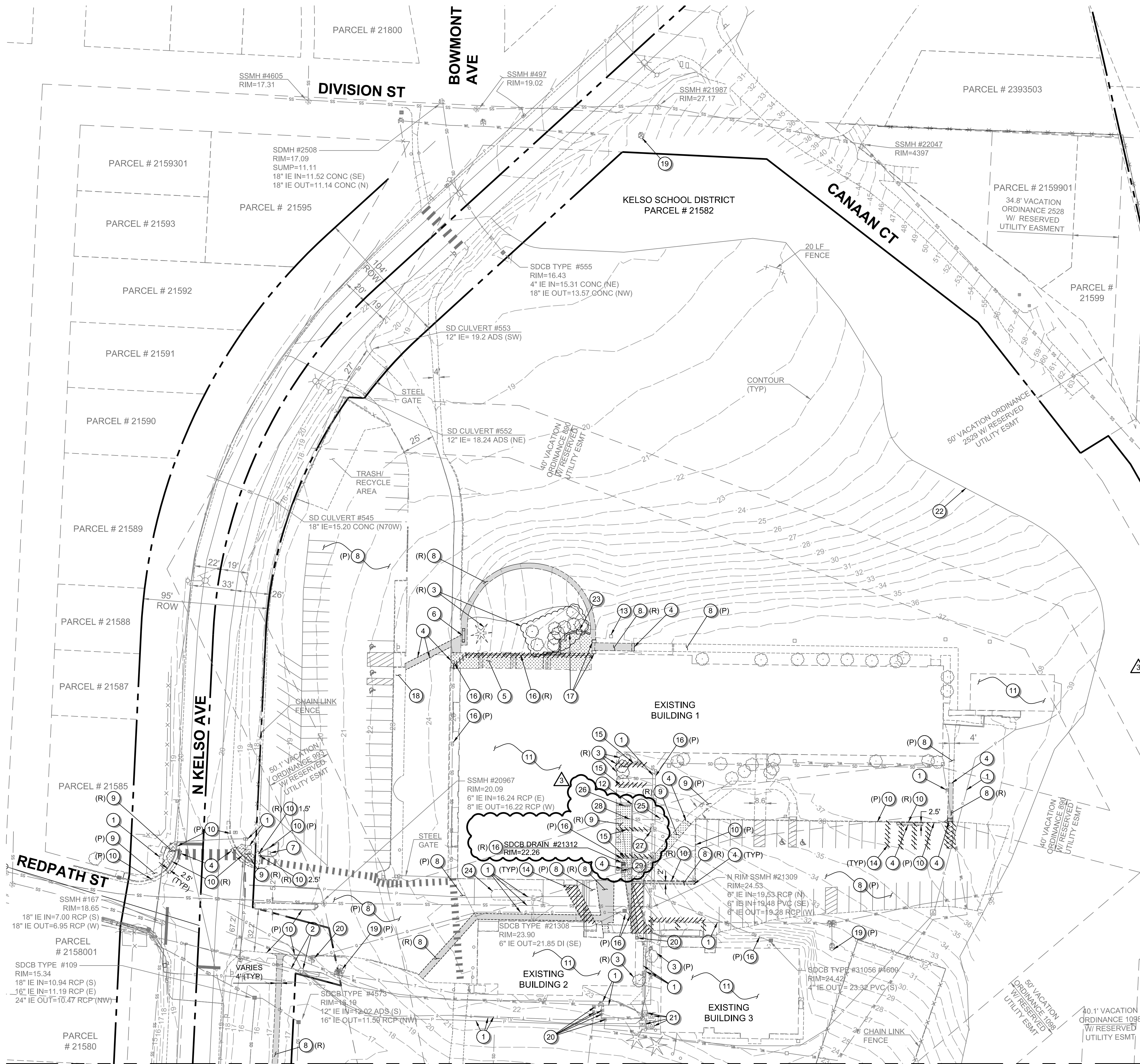
2. Name: _____

a. Address: _____

3. Name: _____

a. Address: _____

END OF BASE BID AND ALTERNATES PROPOSAL FORM (PART 1)



- GENERAL SHEET NOTES**
1. SEE SHEETS C002 AND C003 FOR GENERAL NOTES AND MASTER LEGEND.
 2. IF EXISTING CURB, SIDEWALK AND/OR PAVEMENT DEDICATED TO REMAIN IS DAMAGED, THEN IT IS TO BE REMOVED AND REPLACED TO THE ORIGINAL CONDITIONS AT THE CONTRACTOR'S EXPENSE.

- DEMOLITION NOTES**
1. PROTECT EXISTING UTILITY LINE OR STRUCTURE.
 2. PROTECT OVERHEAD POWER LINE.
 3. REMOVE (R) OR PROTECT (P) TREE AND/OR SHRUB.
 4. SAWCUT CURB, CURB AND GUTTER, ASPHALT, OR CONCRETE
 5. REMOVE HANDRAILS, CONCRETE STEPS, AND CONCRETE SIDEWALK.
 6. REMOVE BENCH.
 7. PROTECT SIGN.
 8. REMOVE (R) OR PROTECT (P) ASPHALT.
 9. REMOVE (R) OR PROTECT (P) CONCRETE SIDEWALK.
 10. REMOVE (R) OR PROTECT (P) CURB OR CURB AND GUTTER.
 11. PROTECT STRUCTURE.
 12. PROTECT RETAINING WALL.
 13. RELOCATE IRRIGATION BOX. SEE SHEET C501 FOR MORE INFORMATION.
 14. REMOVE STRIPING.
 15. ABANDON SANITARY LINE PER MECHANICAL PLANS.
 16. REMOVE (R) OR PROTECT (P) STORM LINE OR STRUCTURE.
 17. REMOVE CONCRETE WALL.
 18. PROTECT EXISTING LANDSCAPE AREA AND PERIMETER CURB.
 19. PROTECT (P) EXISTING FIRE HYDRANT AND ASSOCIATED VALVES.
 20. PROTECT EXISTING UTILITY METER.
 21. PROTECT EXISTING UTILITY VAULT.
 22. PROTECT EXISTING VEGETATION LINE.
 23. REMOVE FLAG POLE.
 24. PROTECT EXISTING OIL TANK - APPROXIMATE LOCATION.

APPROXIMATE LOCATION OF EXISTING OIL TANK - CONTRACTOR TO VERIFY. IF UTILITY CONFLICTS DO NOT EXIST, OIL TANK TO BE ABANDONED-IN-PLACE PER DEPARTMENT OF HEALTH REQUIREMENTS. OTHERWISE REMOVE TANK AND ASSOCIATED PIPE UP TO RETAINING WALL PER DEPT OF HEALTH REQUIREMENTS.

VENT PIPE FOR OIL TANK TO BE ABANDONED / REMOVED WITH OIL TANK. SEE KEYNOTE 25 FOR MORE INFORMATION.

CAP EXISTING PIPE.

OVERFLOW DISCHARGE PIPE DRAINS TO OIL TANK. PROTECT AND MAINTAIN MINIMUM SEPARATION PER DEPARTMENT OF HEALTH REQUIREMENTS.

PROTECT FENCE AND ASSOCIATED GATE.

BASIS OF BEARING: SOUTH 21°36'38" EAST
BETWEEN MONUMENTS NO. 61 AND NO.26,
WASHINGTON COORDINATE SYSTEM,
SOUTH ZONE 4602, NAD 83/2011 (GEOID 12B) AND NAVD88
DERIVED FROM WASHINGTON STATE REFERENCE NETWORK
(WSRN) STATION: CROK3

MONUMENT #61
N: 309448.34'
E: 1031465.67'
EL: 42.87'
LAT: N048° 09' 23.3159"
LON: W122° 54' 12.1592"
SCALE FACTOR: 0.99994241
CONVERGENCE: -001° 44' 44.8919"

MONUMENT #26
N: 307371.7282'
E: 1032288.2950'
EL: 110.509'
LAT: N048° 09' 03.0718"
LON: W122° 53' 59.5808"

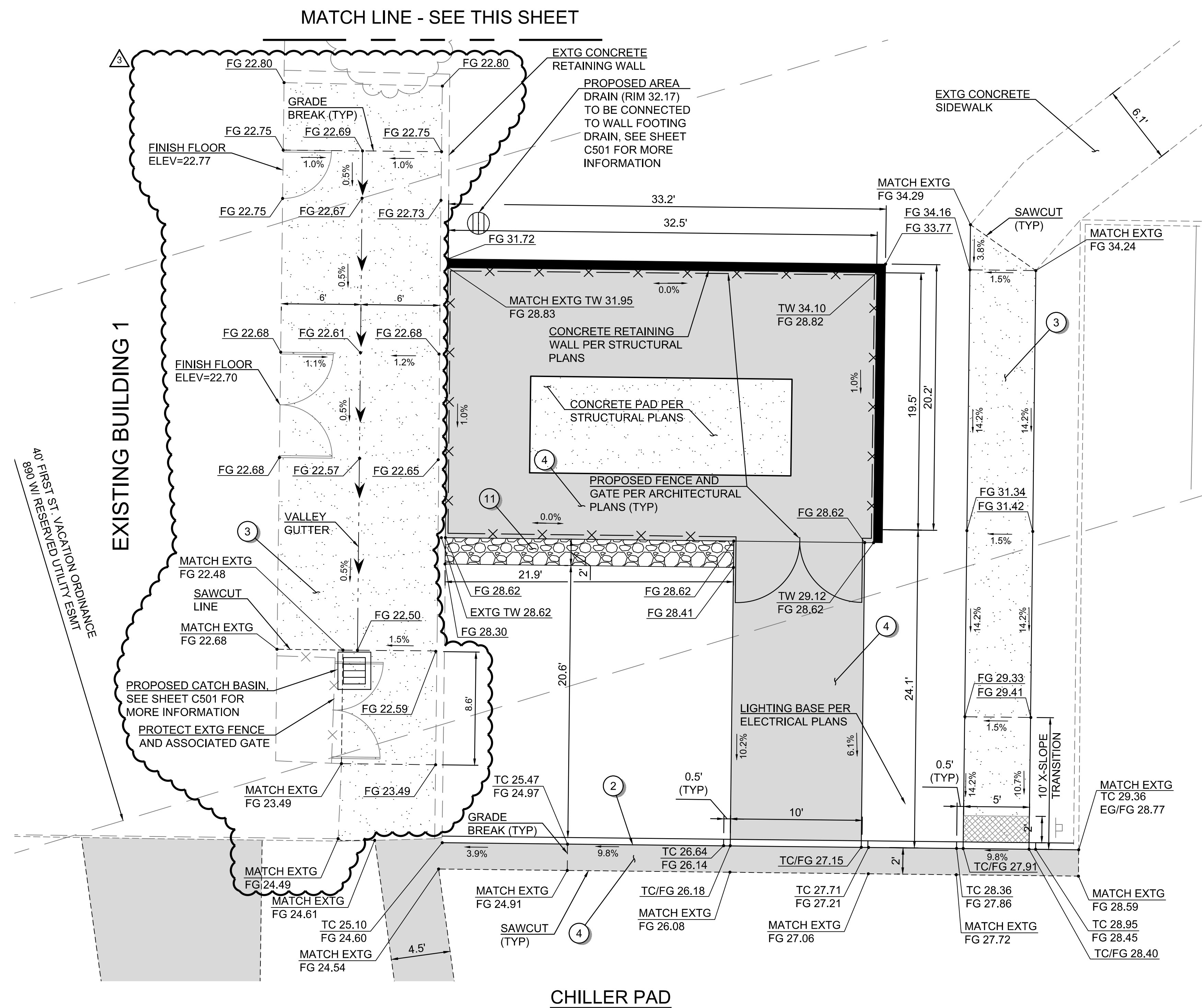
DEMOLITION LEGEND	
	ASPHALT REMOVAL
	CONCRETE REMOVAL
	PIPE ABANDONMENT / PIPE REMOVAL / STRIPING REMOVAL

07/14/21 - ADDENDUM 3

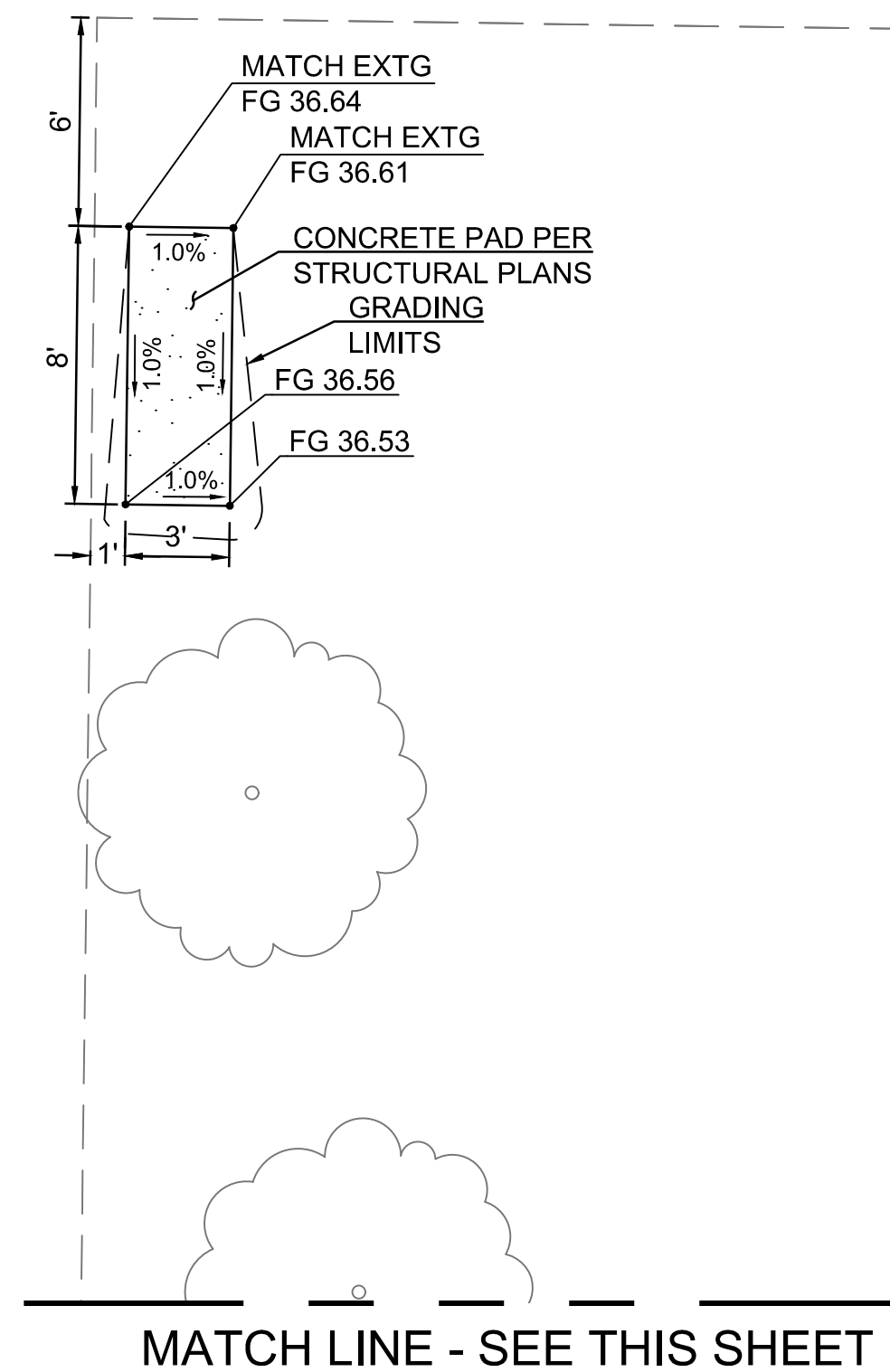
**KELSO SCHOOL DISTRICT NO. 453
HUNTINGTON MIDDLE SCHOOL -
MODERNIZATION AND ADDITION**
500 REDPATH ST, KELSO, WA 98626

Date:	5.28.2021	
Job No.:	21938.00	
Drawn By:	PVR / ANW	
Checked by:	EAP	
Revisions		
#	Date	Description
3	07/14/21	ADDENDUM 03

EXISTING
CONDITIONS
AND DEMO PLAN



EXISTING BUILDING 1



KEY MAP

07/14/21 - ADDENDUM 3

**KELSO SCHOOL DISTRICT NO. 453
HUNTINGTON MIDDLE SCHOOL -
MODERNIZATION AND ADDITION**

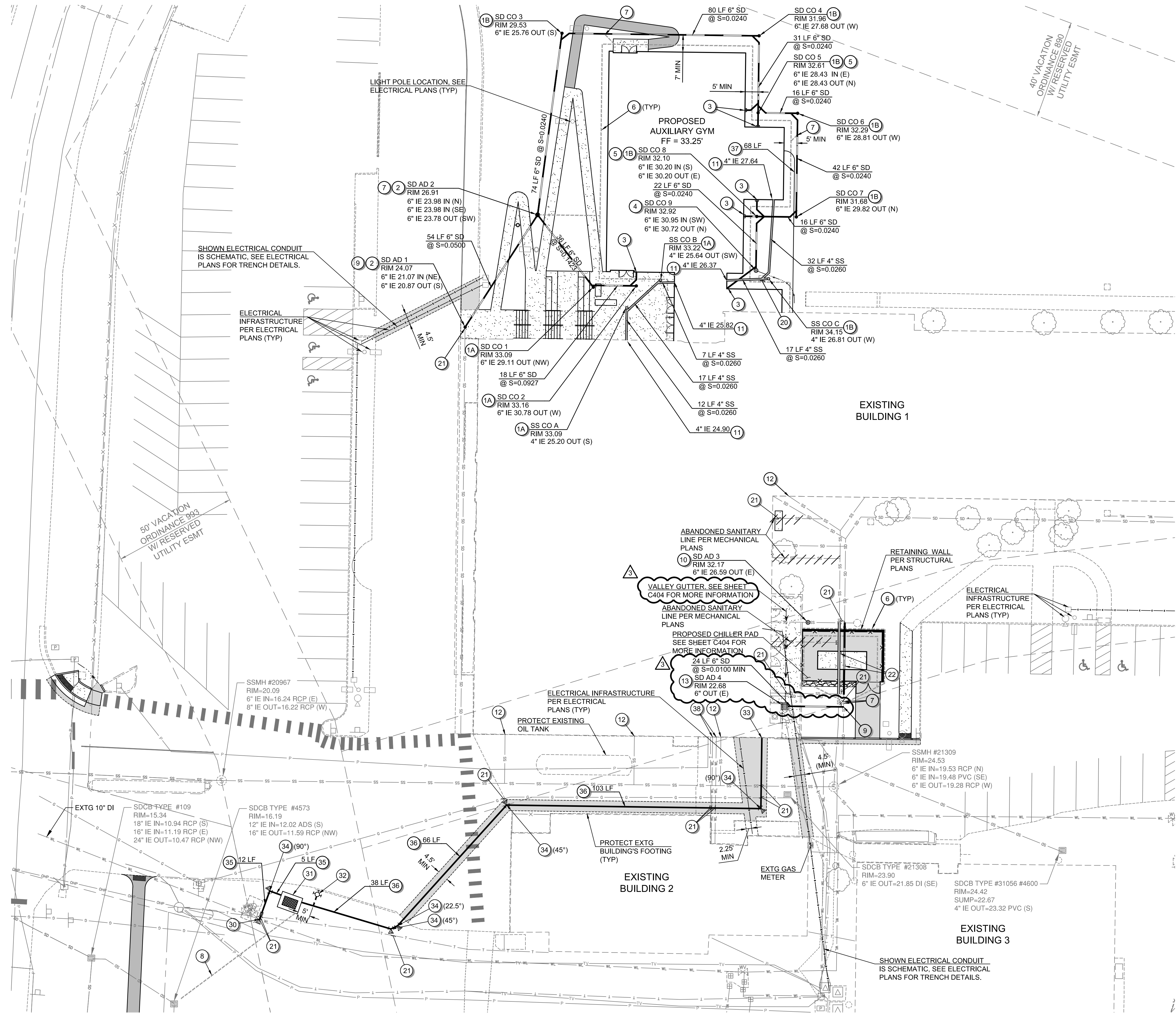
500 REDPATH ST, KELSO, WA 98626

Date:	5.28.2021	
Job No.:	21938.00	
Drawn By:	PVR / ANW	
Checked by:	EAP	
Revisions		
#	Date	Description
3	07/14/21	ADDENDUM 03

CHILLER PAD
GRADING
DETAILS

C404

BID SET



GENERAL SHEET NOTES

- SEE SHEETS C002 AND C003 FOR GENERAL NOTES AND MASTER LEGEND.
- STORMWATER PIPE MATERIAL PER GENERAL NOTES ON SHEET C002.
- TO MINIMIZE RUNOFF FROM THE LANDSCAPED AND LAWN AREAS, BMP T5.13 POST-CONSTRUCTION SOIL QUALITY AND DEPTH IS REQUIRED ON ALL DISTURBED AREAS OUTSIDE OF THE BUILDING FOOTPRINT AND STORMWATER FACILITIES.
- SANITARY PIPE MATERIAL SHALL MATCH MECHANICAL SPECIFICATIONS FOR UNDERGROUND PIPING WHICH INCLUDES ALLOWANCES FOR NO-HUB CAST IRON, PVC (SOLID CORE), AND ABS PIPE.
- PIPE BEDDING AND TRENCHING PER COK DETAILS SS-240, ST-20, ST-30, AND ST-40 ON SHEET C005. 4" OF TOPSOIL SHALL BE USED ON TOP OF UNPAVED TRENCHES.

STORM / SANITARY CONSTRUCTION NOTES

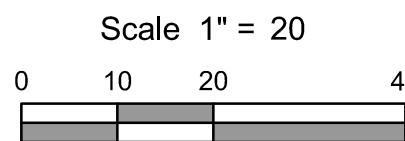
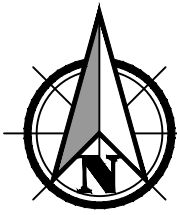
- INSTALL CLEANOUT IN HARDSCAPE AREA PER DETAIL SHEET C602.
- INSTALL CLEANOUT IN SOFTSCAPE AREA PER DETAIL SHEET C602.
- INSTALL NYLOPLAST 24" DRAIN BASIN WITH SOLID COVER PER DETAILS ON SHEET C605.
- INSTALL ROOF DRAIN CONNECTION PER DETAIL ON SHEET C602.
- INSTALL CLEANOUT IN SOFTSCAPE PER DETAIL ON SHEET C602. REPLACE TYPICAL CLEANOUT CAP WITH A 6-INCH DROP-IN GRATE PER DETAIL ON SHEET C606.
- USE INLINE DRAIN CLEANOUT CONFIGURATION PER DETAILS ON SHEET C602.
- INSTALL PERF FOOTING DRAIN, SEE STRUCTURAL PLANS.
- FOUNDATION DRAIN CONNECTION POINT. REFER TO STRUCTURAL PLANS FOR CONTINUOUS FOUNDATION DRAIN AND GRAVEL BACKFILL.
- INSTALL 4" SUMP DRAIN PIPE AT 2% MIN SLOPE. SEE COK DETAIL W-320 ON SHEET C609 FOR MORE INFORMATION.
- CONNECT TO EXISTING STORM PIPE.
- INSTALL NYLOPLAST 24" DRAIN BASIN WITH PEDESTRIAN GRATE PER DETAILS ON SHEET C606.
- SEE MECHANICAL PLANS FOR CONTINUATION.
- CONTRACTOR TO VERIFY TIE-IN AND CONNECT REPLACED SANITARY LINE WITHIN BUILDING TO EXISTING SANITARY LINE ON SITE. SEE MECHANICAL PLANS FOR MORE INFORMATION.
- INSTALL TYPE 1 CATCH BASIN WITH HERRINGBONE GRATE PER WSDOT DETAILS B-5.20 AND B-30.50 ON SHEET C605.

MISCELLANEOUS UTILITY CONSTRUCTION NOTES

- EXISTING IRRIGATION BOX AND ASSOCIATED PIPING TO BE RELOCATED AND RESTORED TO FULLY OPERATIONAL. POST-COMPLETION OF THE AUXILIARY GYM IF SERVICE AREA IS TO REMAIN.
- CONTRACTOR SHALL POT-HOLE AND CONFIRM LOCATIONS AND ELEVATIONS OF EXISTING INFRASTRUCTURE, WHERE APPLICABLE, CONTRACTOR TO CONFIRM EXISTING LATERALS FROM THE BUILDING INDICATING TO BE REMAINED ARE MAINTAINED. IF CONFLICT EXISTS, CONTACT ENGINEER.
- REPLACE APPROXIMATELY 30 LF OF 8" DUCTILE IRON PIPE FOR EACH UTILITY UNDER THE CHILLER PAD. CONTRACTOR TO DETERMINE PIPE HAS MIN 0.5% SLOPE TO THE SOUTH. IF MINIMUM SLOPE IS NOT DISCOVERED, CONTACT ENGINEER.

WATER CONSTRUCTION NOTES

- AFTER TESTING AND APPROVAL, CONNECT TO EXISTING 10" DI WATER MAIN PER COK STANDARD DETAIL W-260 ON SHEET C609.
- INSTALL DOUBLE CHECK DETECTOR ASSEMBLY, LARGE, BELOW GROUND PER COK STANDARD DETAIL W-360-K ON SHEET C609.
- INSTALL FDC PER BIDDER DESIGN.
- CONNECT TO BUILDING SYSTEM. SEE MECHANICAL PLANS FOR CONTINUATION.
- INSTALL:
(1) 90°, 45°, OR 22.5° MJ BEND WITH MJ RESTRAINTS.
(1) THRUST BLOCK PER COK DETAILS W-220 & W-230 ON SHEET C609.
- INSTALL 6" DUCTILE IRON PIPE (DIP).
- INSTALL 6" C900 PIPE.
- INSTALL 1" WATER LINE. SEE MECHANICAL PLANS FOR MATERIAL TYPE AND CONTINUATION AT PROPOSED AND EXISTING BUILDINGS.
- CONTRACTOR TO VERIFY TIE-IN AND CONNECT REPLACED WATER LINE WITHIN BUILDING TO EXISTING WATER LINE ON SITE. SEE MECHANICAL PLANS FOR MORE INFORMATION.



07/14/21 - ADDENDUM 3

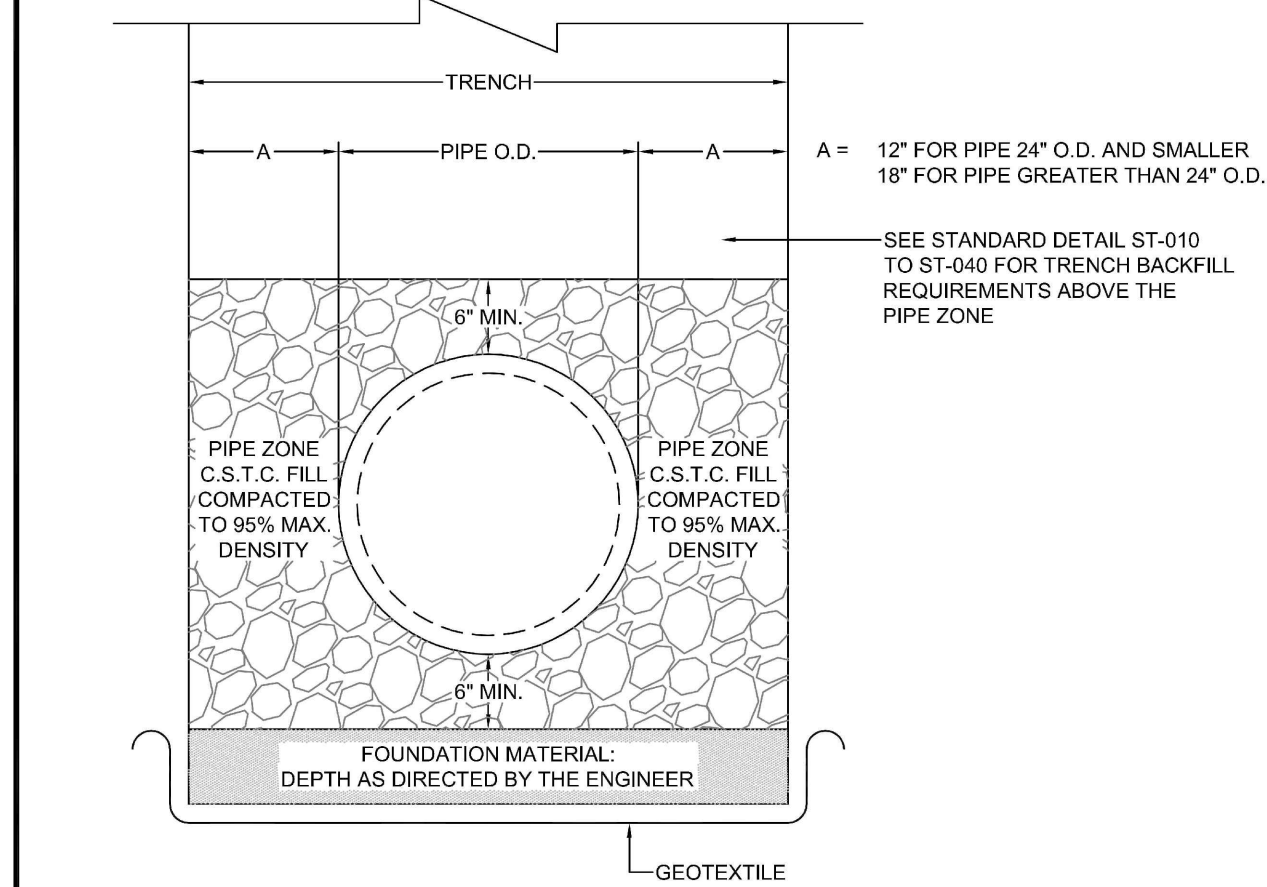
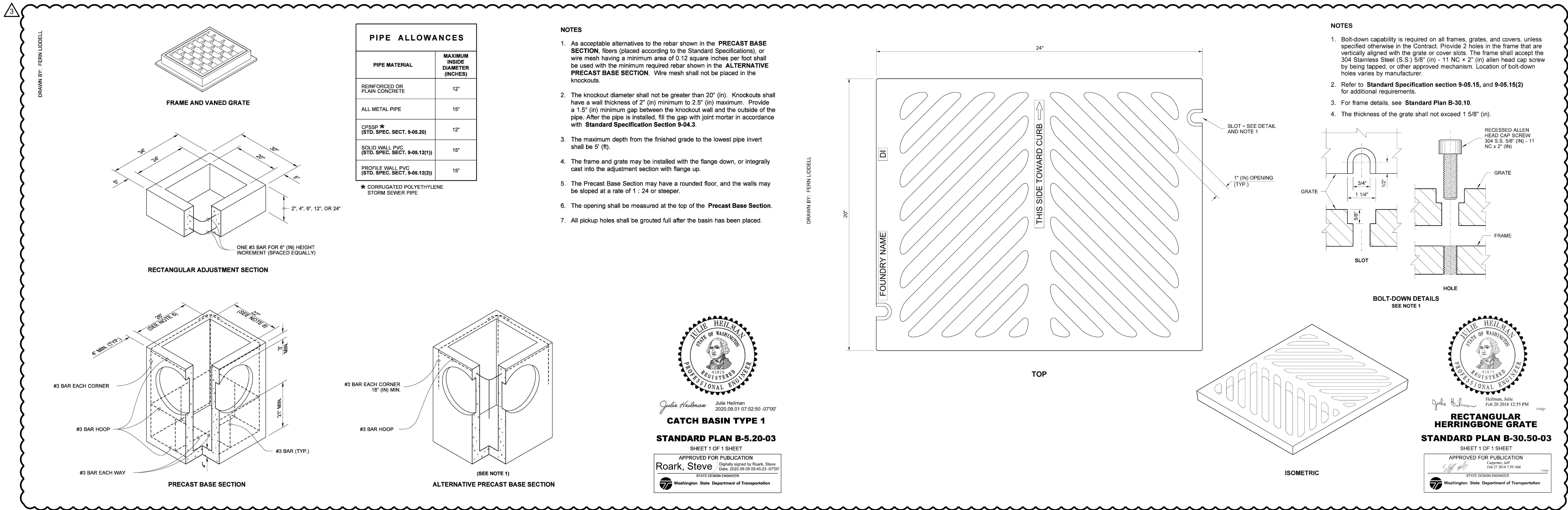


KELSO SCHOOL DISTRICT NO. 453
HUNTINGTON MIDDLE SCHOOL -
MODERNIZATION AND ADDITION
500 REDPATH ST, KELSO, WA 98626

Date:	5.28.2021	
Job No.:	21938.00	
Drawn By:	PVR / ANW	
Checked by:	EAP	
Revisions		
#	Date	Description
3	07/14/21	ADDENDUM 03

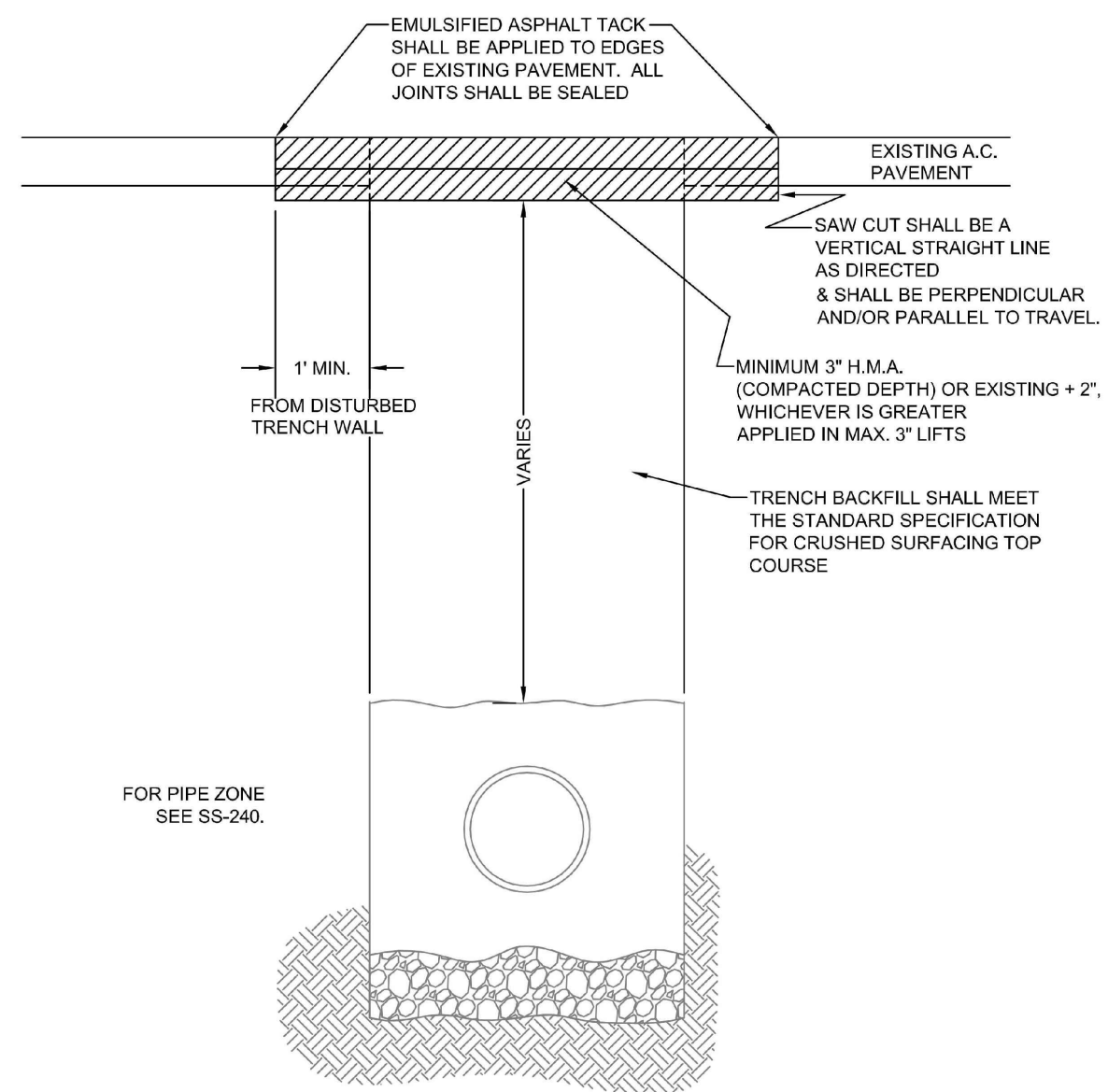
UTILITY PLAN

C501



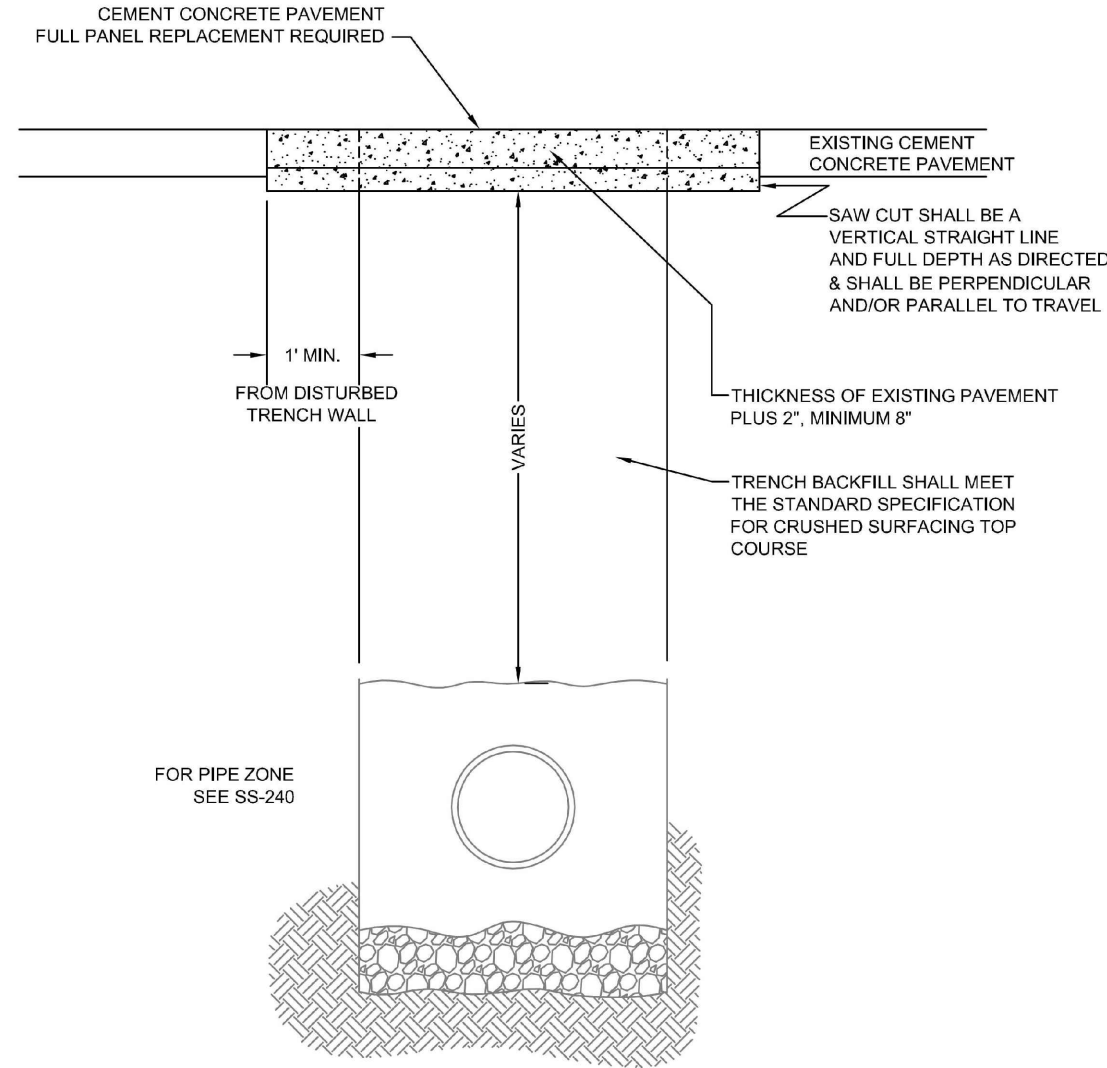
- NOTES:
1. GEOTEXTILE SHALL MEET THE REQUIREMENTS OF SECTION 9-33 & AS NOTED IN THE CITY SPECIAL PROVISIONS.

PIPE BEDDING			
STANDARD PLAN	ST-240	CITY ENGINEER APPROVAL:	
DATE:	2008	Longview:	C.B.
		Kelso:	S.Z.



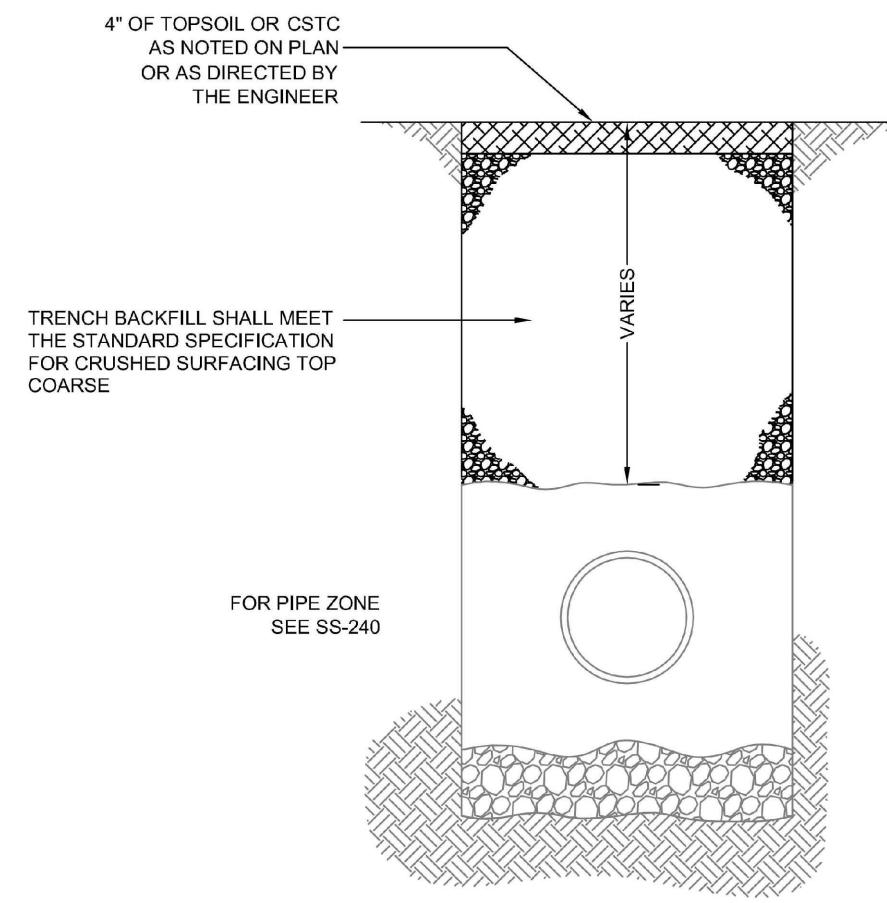
- NOTES:
1. ALL MATERIALS EXCEPT A.C.P. AND BEDDING MATERIAL SHALL BE COMPACTED IN 6-INCH MAXIMUM LIFTS TO 95% DENSITY AS DETERMINED BY ASTM D1557.
 2. TRENCH SHALL BE PLATED UNTIL PAVED.
 3. PLATE TO BE SECURED BY METHOD APPROVED BY ENGINEER.

RESIDENTIAL TRENCH RESTORATION			
STANDARD PLAN	ST-020	CITY ENGINEER APPROVAL:	
DATE:	FEB. 2008	Longview:	C.B.
		Kelso:	S.Z.



- NOTES:
1. ALL MATERIALS EXCEPT CONCRETE AND BEDDING MATERIAL SHALL BE COMPACTED IN 6-INCH MAXIMUM LIFTS TO 95% DENSITY AS DETERMINED BY ASTM D1557.
 2. TRENCH SHALL BE PLATED UNTIL PAVED.
 3. PLATE TO BE SECURED BY METHOD APPROVED BY ENGINEER.
 4. SPALLED OR DAMAGED CONCRETE SHALL BE RE-SAWN AND REPLACED TO LIMITS DIRECTED BY ENGINEER.

CEMENT CONCRETE PAVEMENT TRENCH RESTORATION			
STANDARD PLAN	ST-030	CITY ENGINEER APPROVAL:	
DATE:	FEB. 2008	Longview:	C.B.
		Kelso:	S.Z.



TRENCH RESTORATION FOR UNPAVED AREAS			
STANDARD PLAN	ST-040	CITY ENGINEER APPROVAL:	
DATE:	FEB. 2008	Longview:	C.B.
		Kelso:	S.Z.

07/14/21 - ADDENDUM 3

PRELIMINARY

KELSO SCHOOL DISTRICT NO. 453
HUNTINGTON MIDDLE SCHOOL -
MODERNIZATION AND ADDITION

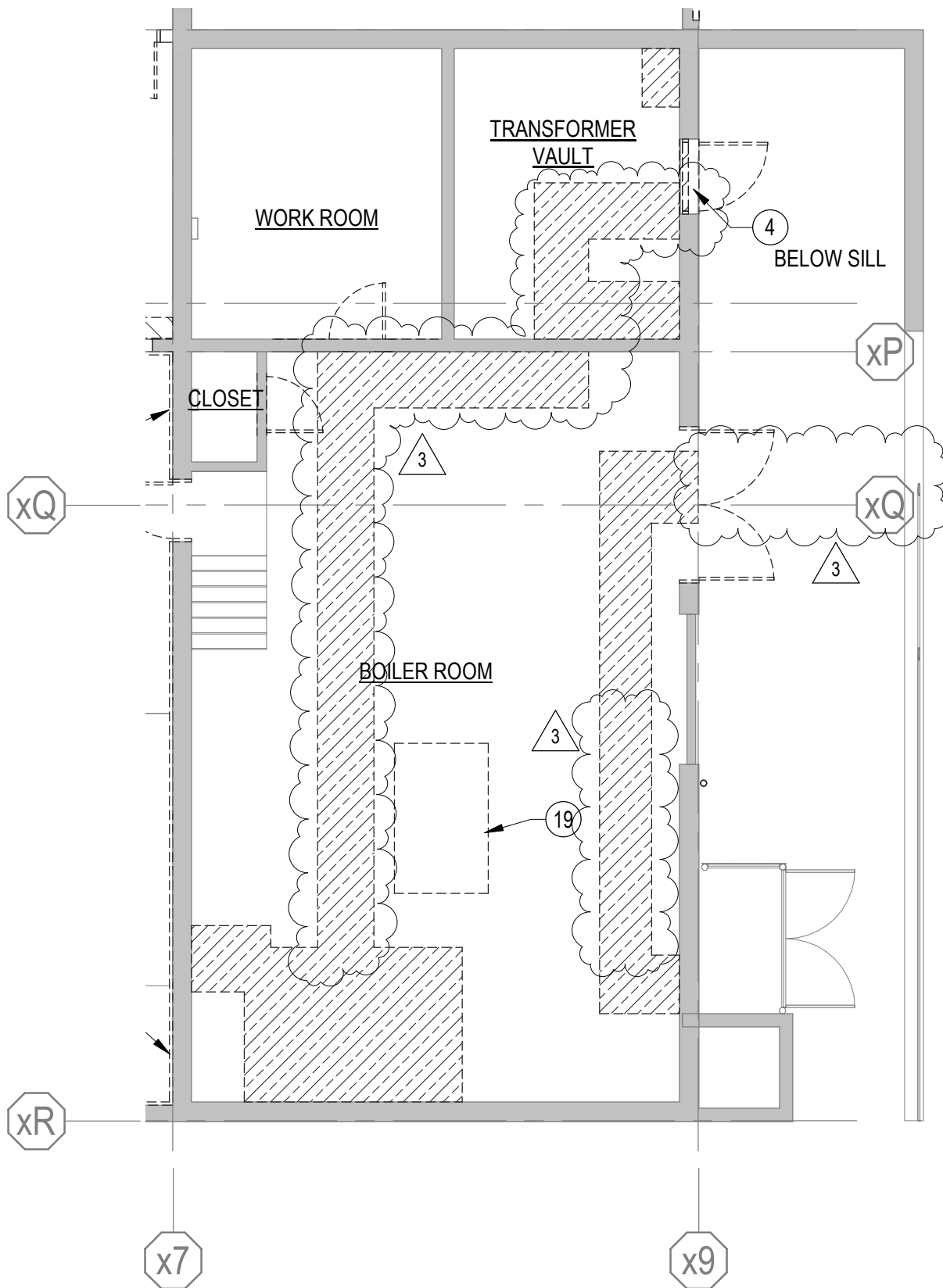
500 REDPATH ST, KELSO, WA 98626

Date:	5.28.2021
Job No.:	21938.00
Drawn By:	PVR / ANW
Checked by:	EAP

Revisions		
#	Date	Description
3	07/14/21	ADDENDUM 03

BEDDING AND
TRENCHING
STANDARD
DETAILS

C605



LEVEL 0 AREA A - DEMO FLOOR PLAN
 SCALE: 1/8"=1'-0"

REF. SHEET

AD100A

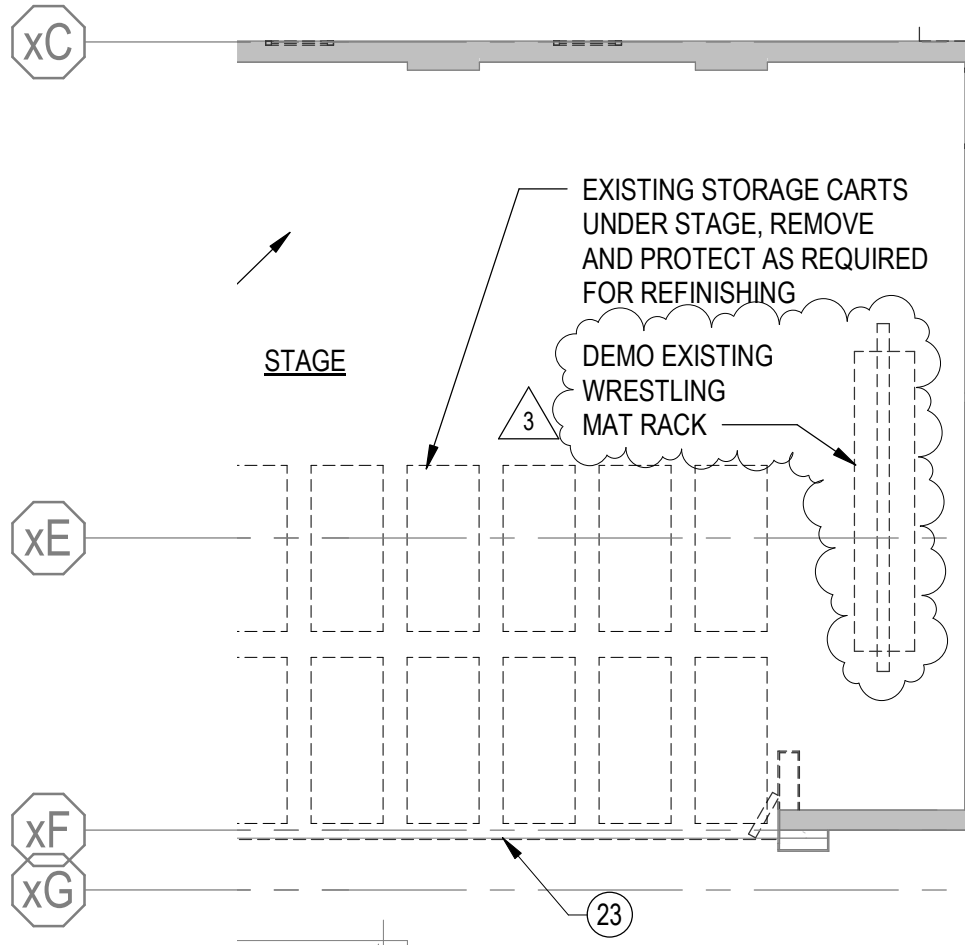
integrus
 ARCHITECTURE

117 S. Main Street, Suite 100 Seattle, WA. 98104
 (206) 628 - 3137 Fax: (206) 628-3138

**KELSO SCHOOL DISTRICT NO. 458
 HUNTINGTON MIDDLE SCHOOL -
 MODERNIZATION AND ADDITION
 500 REDPATH ST, KELSO, WA 98626**

Addendum Drawing

DWG. #: **ADD-001**
 JOB #: 21938
 DRAWN BY: EP
 DATE: 07/14/21
 REF. DOC.: ADDENDUM 03



1 LEVEL 1 AREA A - DEMO FLOOR PLAN

SCALE: 1" = 1'-0"

REF. SHEET

AD101A

integrus
ARCHITECTURE

117 S.Main Street, Suite 100 Seattle, WA. 98104
(206) 628 - 3137 Fax: (206) 628-3138

KELSO SCHOOL DISTRICT NO. 458
**HUNTINGTON MIDDLE SCHOOL -
MODERNIZATION AND ADDITION**
500 REDPATH ST, KELSO, WA 98626

Addendum Drawing

DWG. #: **ADD-002**
JOB #: 21938
DRAWN BY: MT
DATE: 07/14/21
REF. DOC.: ADDENDUM 03

FINISH & COLOR SCHEDULE						
CODE	SPECIFICATION	DESCRIPTION	MANUFACTURER	MFGR. REFERENCE NUMBER	COLOR	APPLICATION
FLOORS						
CEM-1	035400	SELF-LEVELING CEMENTITIOUS CAST UNDERLAYMENT	PER SPECIFICATION	PER SPECIFICATION	PER SPECIFICATION	TOILET ROOMS, LOCKER ROOMS, AREAS WHERE EXISTING TILE DEMOLISHED
CONC-1	033500	SEALED CONCRETE	PER SPECIFICATION	PER SPECIFICATION	PER SPECIFICATION	-
CPT-1	096816	CARPET TILE	MILLIKEN	JOURNAL - INSCRIPTION INS173-152 MANUSCRIPT	CHAMOMILE AND PLUM ACCENTS	THROUGHOUT
LIN-1	096500	LINOLEUM	FORBO	MARMOLEUM REAL	3146 SERENE GREY	CORRIDORS
LIN-2	096500	LINOLEUM	FORBO	MARMOLEUM REAL	2029 EIGER	CORRIDORS
LIN-3	096500	LINOLEUM	FORBO	MARMOLEUM FRESCO	3125 GOLDEN SUNSET	CORRIDORS
RBST-1	096500	RUBBER STAIR TREAD / RISER	ROPPE	SYMMETRY	CHARCOAL S123	VESTIBULE STAIR
RF-1	096500	RESILIENT FLOORING	ALTRO	RELIANCE 25	STORM - D25903	RESTROOM / KITCHEN
RF-2	096500	RUBBER FLOORING	ROPPE	SYMMETRY 60X50cm TILE	CHARCOAL 123	VESTIBULE STAIR/LANDING
RFW	096466	REFINISH EXISTING WOOD FLOORS	PER SPECIFICATION	PER SPECIFICATION	PER SPECIFICATION	EXISTING GYMNASIUM, STAGE
WDF-1	096466	WOOD ATHLETIC FLOORING	PER SPECIFICATION	PER SPECIFICATION	PER SPECIFICATION	AUX GYMNASIUM
WOM-1	096816	WALK-OFF MAT	TANDUS CENTIVA	ASSERTIVE ACTION 04837	STEELWORK 26202	ENTRY WAYS
BASE						
RB-1	096500	4" RUBBER BASE	ROPPE	PINNACLE	CHARCOAL 123	THROUGHOUT (EXCEPT CORRIDORS/GYM)
RB-2	096500	4" VENTED RUBBER BASE	TARKETT	4" VENT COVE	BLACK	AUX GYMNASIUM / GYM
RB-3	096500	4" RUBBER BASE	ROPPE	700 SERIES	BLACK 100	VESTIBULE
RBST-2	096500	RUBBER STAIR STRINGER	ROPPE	PER SPECIFICATION	BLACK 100	VESTIBULE STAIR
WALLS						
AP-1	098400	POLYESTER ACOUSTIC PANEL	FSORB	1" TH WALL PANEL 4X8'	PAINTED TO MATCH P-4	GYMNASIUMS/MUSIC/STAGE
AP-2	098400	POLYESTER ACOUSTIC PANEL	FSORB	1" TH WALL PANEL 4X8'	GREY	MUSIC/CAFETERIA
AP-5	098400	DUCT LINER	KAUF	1.5 PCF, 2" DUCT LINER	PER SPECIFICATION	BOILER ROOM
CMU-1	042016	CONCRETE MASONRY UNIT	MUTUAL MATERIALS	GROUND FACE	WINTER SKY	AUX GYMNASIUM
CMU-2	042016	CONCRETE MASONRY UNIT	MUTUAL MATERIALS	GROUND FACE	SABLE	AUX GYMNASIUM
FRP-1	068316	FIBER REINFORCED PANEL	CRANE COMPOSITES	VARITEX LINEN TEXTURE LNMCI	SHELTER COVE 1281	RESTROOMS
LIN-1	096500	LINOLEUM	FORBO	MARMOLEUM REAL	3146 SERENE GREY	CORRIDORS
P-1	099000	PAINT	BENJAMIN MOORE	2148-70	MOUNTAIN PEAK WHITE 2148-70	THROUGHOUT
P-2	099000	PAINT	BENJAMIN MOORE	1610	FRENCH BERET - 1610	-
P-3	099000	PAINT	BENJAMIN MOORE	1605	WINTER SOLSTICE - 1605	-
P-4	099000	PAINT	BENJAMIN MOORE	2021-20	LEMON 2021-20	-
P-5	099613	ABRASION RESISTANT COATING	PROFORMAX	PER SPECIFICATION	TO MATCH BENJAMIN MOORE LEMON 2021-20	STAIRCASE / LIBRARY / CORRIDOR ALCOVES
P-6	099613	ABRASION RESISTANT COATING	PROFORMAX	PER SPECIFICATION	CUSTOM COLOR TO MATCH LKR-2	-
P-7	099613	ABRASION RESISTANT COATING	PROFORMAX	PER SPECIFICATION	TO MATCH BENJAMIN MOORE WINTER SOLSTICE 1605	-
P-8	099000	PAINT	BENJAMIN MOORE	PER SPECIFICATION	CUSTOM COLOR TO MATCH LKR-2	-
P-9	099000	PAINT	BENJAMIN MOORE	PER SPECIFICATION	BLACK 2132-20	SELECT HM DOOR FRAMES
PLYWD-1	061000	PLYWOOD	PER SPECIFICATION	PER SPECIFICATION	PER SPECIFICATION	MDF, GYM STORAGE, IDF
TB-1	101100	TACKBOARD	CLARIDGE	SERIES 5 - VARIOUS SIZES	FORBO OYSTER SHELL 2206	THROUGHOUT
TWC-1	097200	TACKABLE WALL COVERING	FORBO	2206	OYSTER SHELL	THROUGHOUT
TWC-2	097200	TACKABLE WALL COVERING	FORBO	2204	POPPY SEED	CORRIDORS
VWC-1	097200	VINYL WALLCOVERING	DESIGNTEX	CUSTOM	CUSTOM	CORRIDORS
WB-1	101100	WHITE BOARD	CLARIDGE	SERIES 5 - VARIOUS SIZES	WHITE	THROUGHOUT
CEILING						
ACT-1	095123	ACOUSTICAL SUSPENDED TILES	ARMSTRONG	OPTIMA 3252PB 24X48 - SQUARE TEGULAR	WHITE (WH)	THROUGHOUT
ACT-2	095123	ACOUSTICAL SUSPENDED TILES	ARMSTRONG	OPTIMA HEALTH ZONE 3215PB 24X48 - SQUARE TEGULAR	WHITE	RESTROOM / KITCHEN
ACT-3	095123	ACOUSTICAL SUSPENDED TILES	ARMSTRONG	OPTIMA 3265PB 48X48 - SQUARE TEGULAR	WHITE	STAIRWELLS
ACT-4	098400	MECHANICALLY FASTENED ACOUSTICAL CEILING TILES	FSORB	48X96", 2" TH, NRC 1.05	WHITE	GYMNASIUM
ACT-5	095123	ACOUSTICAL SUSPENDED CLOUD	ARMSTRONG	OPTIMA CAPZ CUSTOM 42X96	WHITE	LIBRARY
ACT-6	095123	ACOUSTICAL SUSPENDED CLOUD	ARMSTRONG	CALLA HIGH CAC 24x48 - SQUARE TEGULAR	WHITE	CAFETERIA
ACT-7	095123	ACOUSTICAL SUSPENDED TILES	ARMSTRONG	CALLA HIGH NRC 2846 24X24 - SQUARE TEGULAR	WHITE	MUSIC ROOM
GWB-1	092116	GYPSUM CEILING	PER SPECIFICATION	PER SPECIFICATION	PER SPECIFICATION	PER RCP
GWB-2	092116	WIRE-HUNG ACOUSTIC GYPSUM CEILING	PER SPECIFICATION	PER SPECIFICATION	PER SPECIFICATION	BOILER ROOM
MC-1	095123	LINEAR METAL CEILING PANEL ASSEMBLY	CERTAINTED	LINEAR MULTIBOX CONTINUOUS	DOUGLAS FIR 8452	VESTIBULE
MISC						
BLCR-1	126613	BLEACHER	HUSSEY	MAXAM 26	268 PURPLE	AUX GYMNASIUM
CC-1	102123	CUBICAL CURTAIN	MAHARAM	SIDESTEP	DUSK	HEALTH ROOM
DR-1	081416	FLUSH WOOD DOOR	VT INDUSTRIES	SELECT WHITE MAPLE	CLEAR CL18	THROUGHOUT
FAB-1	102227	WOVEN FABRIC	CARNEGIE XOREL	XOREL - 6427	753 (LIGHT GRAY)	OPERABLE PARTITION FINISH
LKR-1	105110	LOCKER COLOR	DEBOURGH	PER SPECIFICATION	ASH GRAY	CORRIDORS
LKR-2	105110	LOCKER COLOR	DEBOURGH	PER SPECIFICATION	PURPLE FIG	CORRIDORS
MDF-1	062000	MEDIUM DENSITY FIBERBOARD	PER SPECIFICATION	PER SPECIFICATION	P-5	CORRIDOR ALCOVE
MDF-2	062000	MEDIUM DENSITY FIBERBOARD	PER SPECIFICATION	PER SPECIFICATION	P-6	CORRIDOR ALCOVE
PLAM-1	064100	PLASTIC LAMINATE	FORMICA	8843-WR	NATURAL ASH	VERTICAL CASEWORK
PLAM-2	064100	PLASTIC LAMINATE	WILSONART	4879-38	STEEL MESH	COUNTERTOPS
PLAM-3	064100	PLASTIC LAMINATE	WILSONART	5013K	MUSHROOM	OPERABLE WALL STAGE / CASEWORK
PLAM-4	064100	WRITABLE LAMINATE	FORMICA	20459-90	BRITE WHITE	OPERABLE WALL STAGE
PLAM-5	064100	PLASTIC LAMINATE	FORMICA	CASSIS 6903-58	CASSIS	ADMIN & LIBRARY RECEPTION DESK ACCENT
PLAM-6	064100	PLASTIC LAMINATE	ABET LAMINATI	-	488 SEI	ADMIN & LIBRARY RECEPTION DESK ACCENT / CORRIDOR DISPLAY CASES
PLAM-7	064100	CHEMICAL RESISTANT PLASTIC LAMINATE	WILSONART	5013-390	MUSHROOM	SCIENCE/FSC CLASSROOMS
PLYWD-2	064100	BIRCH VENEER PLYWOOD	STATES INDUSTRIES	APPLEPLY	CLEAR COAT	SELECT CASEWORK
RS-1	122413	ROLLER SHADE	DRAPER	SEE SPECIFICATION	OYSTER CHARCOAL	SEE SPECIFICATION FOR LOCATIONS
RS-2	122413	ROLLER SHADE	DRAPER	SEE SPECIFICATION	ODYSSEY	SEE SPECIFICATION FOR LOCATIONS
TC-1	102113	TOILET COMPARTMENT	ASI ACCURATE PARTITIONS	COLOR-THRU PHENOLIC	SMOKE	RESTROOMS
WD-1	062000	SOLID MAPLE STAIR CAP	PER SPECIFICATION	5/4 SOLID MAPLE	CLEAR COAT	STAIR CAP
WP-1	116600	WALL PADS	PORTER	FIRESAFE	BLACK	GYMNASIUMS

FINISH PLAN GENERAL NOTES

1. AN * (ASTERISK) MEANS MULTIPLE OF THE SAME FINISH. REFER TO PLANS, CEILINGS AND INTERIOR ELEVATIONS FOR ADDITIONAL INFORMATION.
2. REFER TO SPECIFICATIONS FOR EXACT MANUFACTURER'S INSTALLATION METHODS.
3. ALL GWB, SGWB, VENEER PLASTER, AND (E) PCP TO BE PAINTED P-1, UNO.
4. ALL HOLLOW METAL DOOR FRAMES AND STRUCTURAL COLUMNS TO BE PAINTED P-2, UNO.
5. FOR CEILING HEIGHTS AND FINISHES, REFER TO REFLECTED CEILING PLANS.
6. ALL FINISHES AND RUBBER BASE TO EXTEND UNDER ALL MOVEABLE CASEWORK AND EQUIPMENT AND ALL OPEN CASEWORK.
7. ALL FLOORING / COLOR TRANSITIONS, WHERE REQUIRED SHALL BE CENTERED UNDER DOOR.
8. VERIFY, WITH ARCHITECT, CARPET INSTALL DIRECTION PRIOR TO ORDERING MATERIAL AND INSTALLATION.
9. ALL INTERIOR APPLICATION OF ANTI-GRAFFITI COATING (AGC) TO BE 8'-0".
10. ALL INTERIOR WALL AND CEILING FINISHES SHALL HAVE FLAME SPREAD INDEX NOT GREATER THAN CLASS C.
11. REFER TO SHEET A471 AND A472 FOR FINISH TRANSITION DETAILS.

FINISH ABBREVIATIONS

FLOOR & BASE	WALL	CEILING	MISC.
CEM SELF-LEVELING CEMENTITIOUS UNDERLAYMENT	AP	ACT	AGC ANTI-GRAFFITI COATING
CONC CONCRETE	CMU	FF	BLCR BLEACHER
BF BROOM FINISH	FRP	OTA	CC CUBICAL CURTAIN
CPT CARPET	GWB	OTS	CG CORNER GUARD
LIN LINOLEUM	GWB-IR	MC	PLAM PLASTIC LAMINATE
RB RUBBER BASE		SGWB	TC TOILET COMPARTMENT
RBST RUBBER STAIR TREAD	GWB-VP	SGWB-MR	MC METAL CEILING
RF RESILIENT FLOORING	GWB-MR		RS ROLLERSHADE
RFW REFINISH EXISTING WOOD	P		WP WALL PADS
WDF WOOD ATHLETIC FLOORING	PCP		LKR LOCKERS
WOM WALK OFF MAT	TWC		DR FLUSH WOOD DOOR
	VWC		MDF MEDIUM DENSITY FIBERBOARD
	WD		WD WOOD
	WP		
		ACOUSTICAL PANELS	
		CONCRETE MASONRY UNIT	
		FIBERGLASS WALL PANEL	
		GYPSUM WALL BOARD	
		GYPSUM WALL BOARD IMPACT RESISTANCE	
		GYPSUM VENEER PLASTER	
		GYPSUM WALL BOARD	
		PAINT	
		PORTLAND CEMENT PLASTER	
		TACK WALL COVERING	
		VINYL WALLCOVERING	
		WOOD	
		WALL PADS	

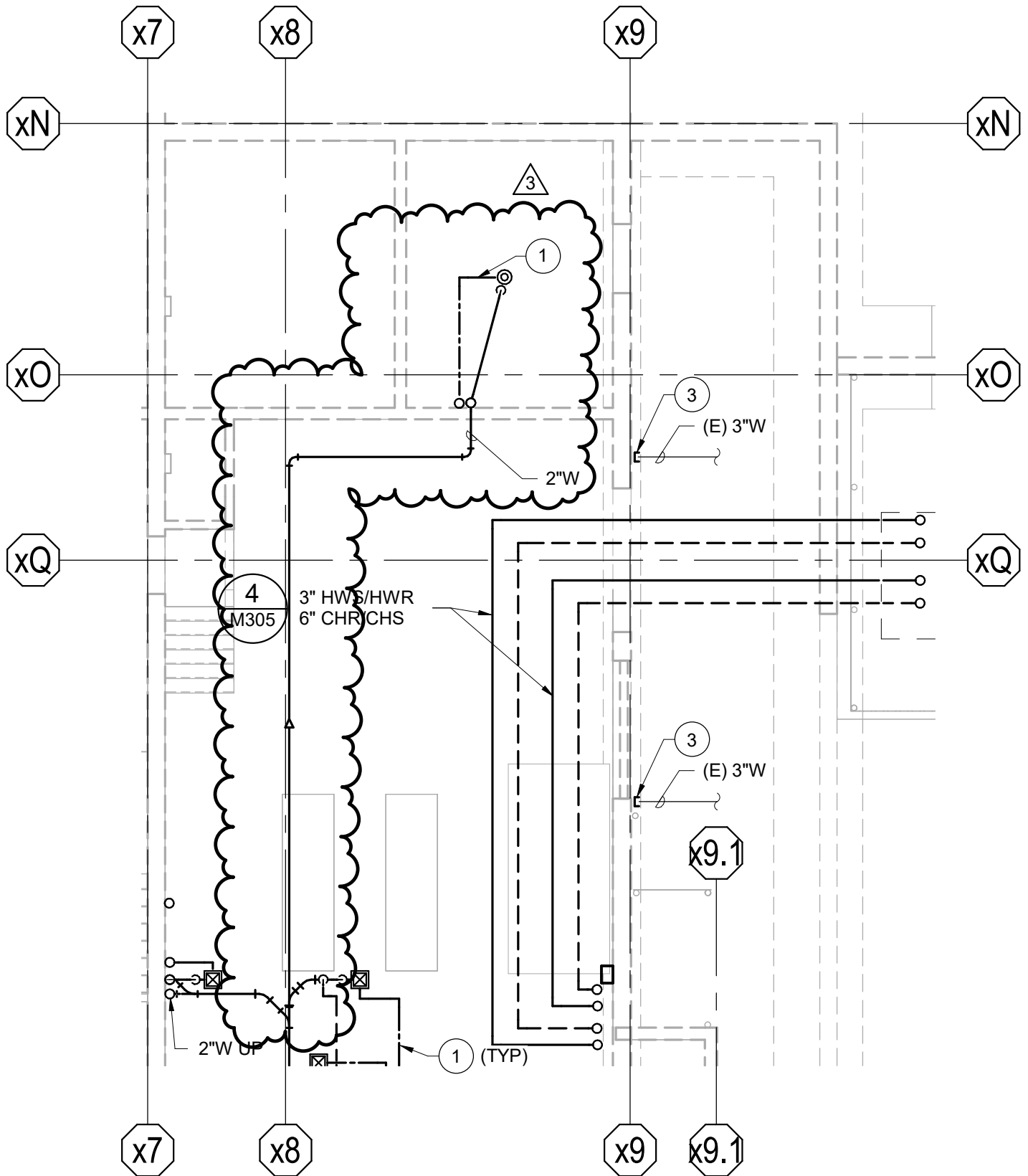
KELSO SCHOOL DISTRICT NO. 458
HUNTINGTON MIDDLE SCHOOL -
MODERNIZATION AND ADDITION

500 REDPATH ST, KELSO, WA 98626

Date:	05/28/2021	
Job No.:	21938.00	
Drawn By:	SQ	
Checked by:	SS	
Revisions		
#	Date	Description
3	07/14/21	ADDENDUM 03

FINISH & COLOR
SCHEDULE

A400



REF. SHEET

M200A

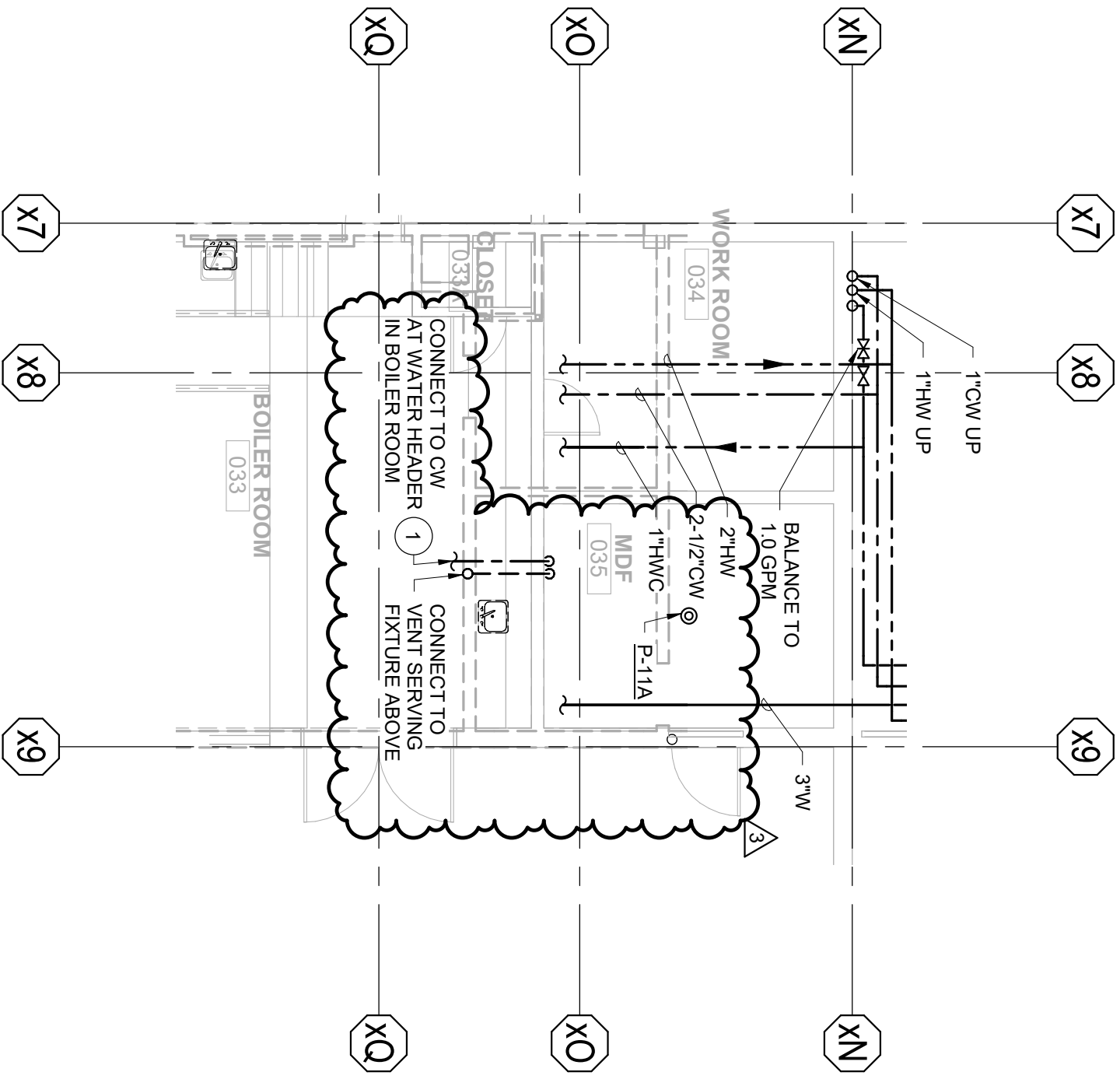
integrus
ARCHITECTURE

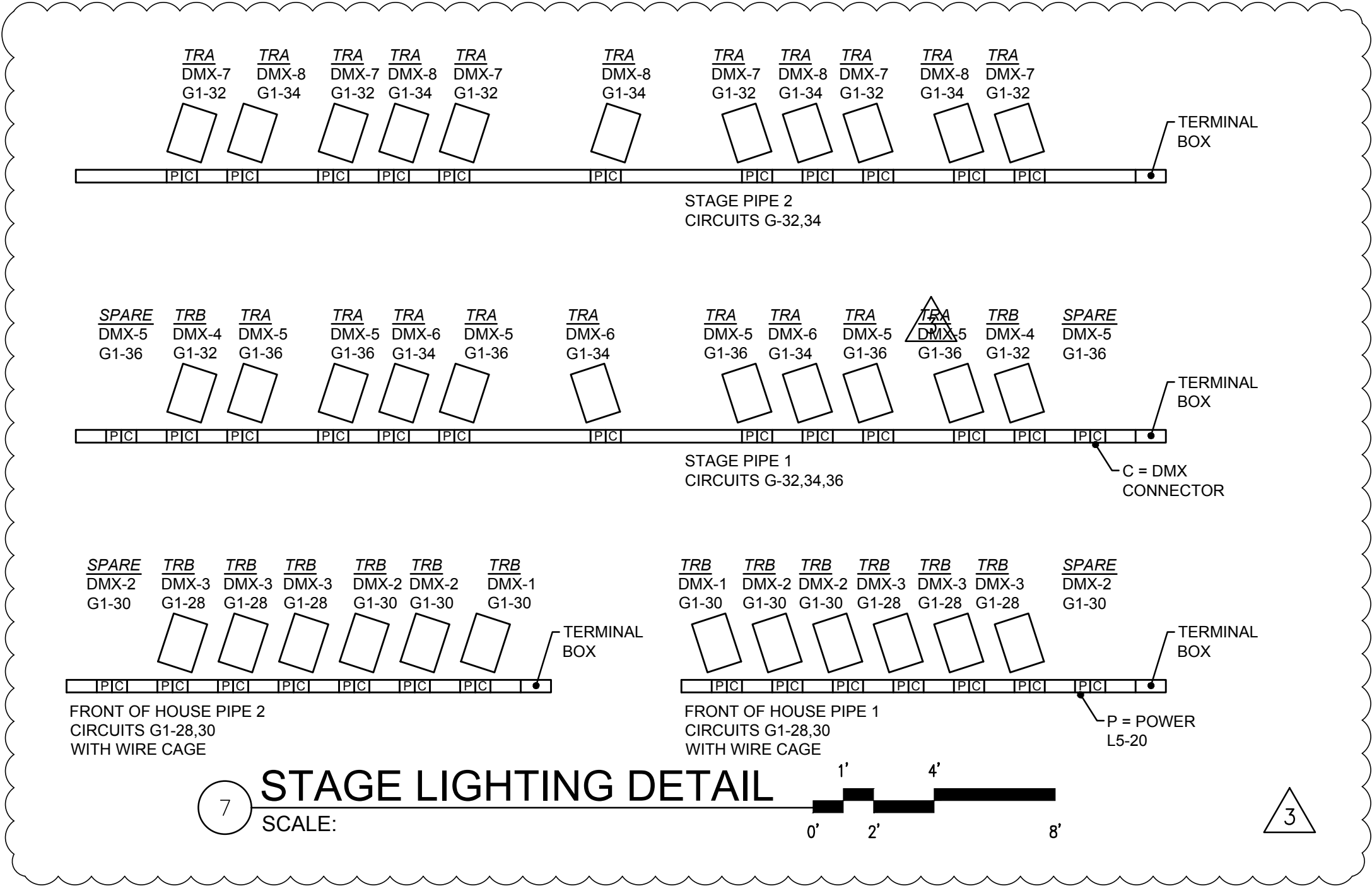
117 S.Main Street, Suite 100 Seattle, WA. 98104
(206) 628 - 3137 Fax: (206) 628-3138

**KELSO SCHOOL DISTRICT NO. 453
HUNTINGTON MIDDLE SCHOOL -
MODERNIZATION AND ADDITION
500 REDPATH ST, KELSO, WA 98626**

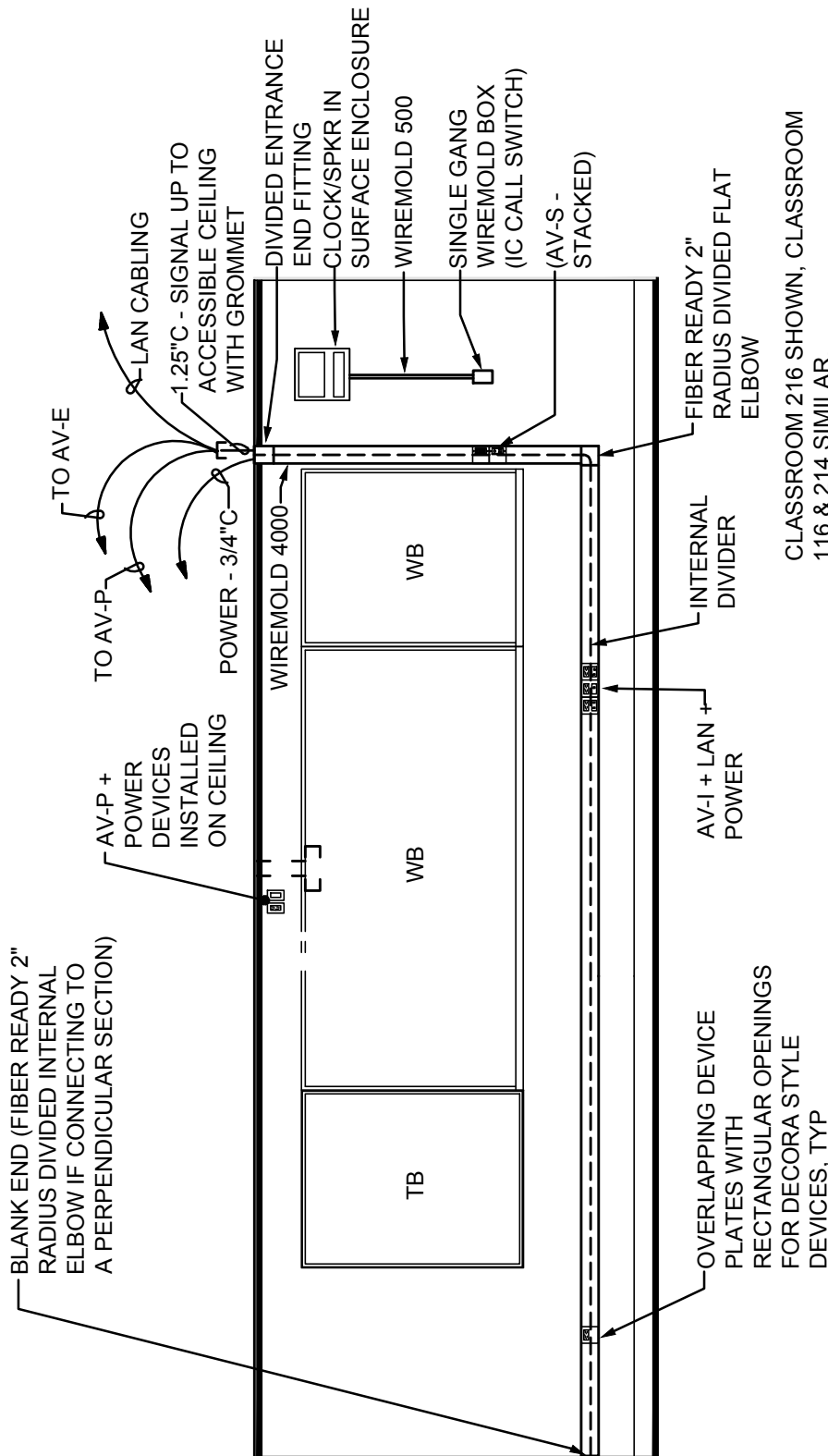
Addendum Drawing

DWG. #: **ADM-006**
JOB #: 21938.00
DRAWN BY: TP
DATE: 07/14/21
REF. DOC.: ADDENDUM 03





3



CLASSROOM 216 SHOWN, CLASSROOM 116 & 214 SIMILAR.

CLASSROOMS 103, 107, 120, 203, 214, & 220 SIMILAR EXCEPT VERTICAL SECTION ON LEFT HAND SIDE.

COUNSELING 124 SIMILAR EXCEPT 15-FT LONG SECTION OF HORIZONTAL WIREMOLD.

SEE POWER & SYSTEMS SHEETS FOR QUANTITY OF DEVICES.

SMR ELEVATION



8

REF. SHEET

E701

integrus
ARCHITECTURE

117 S.Main Street, Suite 100 Seattle, WA. 98104
(206) 628 - 3137 Fax: (206) 628-3138

KELSO SCHOOL DISTRICT NO. 458
**HUNTINGTON MIDDLE SCHOOL -
MODERNIZATION AND ADDITION**
500 REDPATH ST, KELSO, WA 98626

Addendum Drawing

DWG. #: **ADE-006**
JOB #: 21938
DRAWN BY: SJH
DATE: 07/14/21
REF. DOC.: ADDENDUM 03

ELECTRIFIED DOOR HARDWARE SCHEDULE

DOOR #	HW SET	LOCATION	ELECTRIFIED PANIC (DIV 8)	REQUEST TO EXIT	ELEC STRIKE	POWER TRANSFER	DOOR POS SWITCH (DIV 28)	ACCESS CONTROL SYSTEM (DIV 28)	ADA OPERATOR (DIV 8)	LOCK POWER SUPPLY	NOTES
MAIN BUILDING											
012A	27	EXT TO CAFETERIA - SOUTH	RX-QEL-XP98	INTEGRAL TO HDW		EPT10 (DIV 8)	YES	YES - CR & SCHEDULE	YES	YES (DIV 8)	INTERCOM STATION (DIV 27)
012B	17	EXT TO CAFETERIA - NORTH	RX-QEL-XP98	INTEGRAL TO HDW		EPT10 (DIV 8)	YES	YES - CR & SCHEDULE		YES (DIV 8)	INTERCOM STATION (DIV 27)
033B	26	EXT TO BOILER RM					YES				
035	22	EXT TO MDF					YES				
040B	31	EXT TO CORR 030 (S. ENTRANCE)	RX-QEL-XP98	INTEGRAL TO HDW		EPT10 (DIV 8)	YES	YES - CR & SCHEDULE		YES (DIV 8)	DBL - (2) LEAVES ELECTRIFIED/MONITORED
044	22	EXT TO STAIR E (N. STAIR)					YES				
050	22	EXT TO STAIR F (S. STAIR)					YES				
060	03	EXT TO VEST 060 (S. MAIN ENTRY)	RX-QEL-XP98	INTEGRAL TO HDW		EPT10 (DIV 8)	YES	YES - CR & SCHEDULE	YES - EXT BOLLARD MT INTERIOR - JAMB KIT	YES (DIV 8)	DBL - (2) LEAVES ELECTRIFIED/MONITORED INTRUSION KEY PAD INTERCOM STATION (DIV 27) REMOTE RELEASE FROM MAIN OFFICE
060A	04	EXT TO VEST 060 (N. MAIN ENTRY)	RX-QEL-XP98	INTEGRAL TO HDW		EPT10 (DIV 8)	YES	YES - SCHEDULE		YES (DIV 28)	
060B	02	VEST 060 TO STAIR 1 (E. PAIR)	RX-QEL-XP98	INTEGRAL TO HDW		EPT10 (DIV 8)	YES	YES - SCHEDULE		YES (DIV 8)	
060C	01	VEST 060 TO STAIR 1 (W. PAIR)	RX-QEL-XP98	INTEGRAL TO HDW		EPT10 (DIV 8)	YES	YES - CR, SCHEDULE & REMOTE RELEASE	YES - VEST BOLLARD INTERIOR - JAMB KIT	YES (DIV 8)	REMOTE RELEASE FROM MAIN OFFICE MOUNT CR ON BOLLARD
061	01A	VEST TO AUX GYM	RX-QEL-XP98	INTEGRAL TO HDW		EPT10 (DIV 8)			YES	YES (DIV 8)	
061A	33	EXT TO AUX GYM - SOUTH					YES				DBL - (2) LEAVES MONITORED
061B	33	EXT TO AUX GYM - NORTH					YES				DBL - (2) LEAVES MONITORED
138	05	MAIN OFFICE TO CORR 140		ABV DOOR BY DIV 28	YES (DIV 8)		YES	YES - SCHEDULE & REMOTE LOCK		YES (DIV 8 & 28)	REMOTE LOCK FROM MAIN OFFICE LED INDICATOR
138A	05W	VEST TO MAIN OFFICE		ABV DOOR BY DIV 28	YES (DIV 8)		YES	YES - CR, SCHEDULE & REMOTE RELEASE		YES (DIV 8 & 28)	REMOTE RELEASE FROM MAIN OFFICE
140A	30	EXT TO CORR 140 (E. ENTRANCE)	RX-QEL-XP98	INTEGRAL TO HDW		EPT10 (DIV 8)	YES	YES - CR & SCHEDULE		YES (DIV 8)	INTERCOM STATION (DIV 27) DBL - (2) LEAVES ELECTRIFIED/MONITORED
140C	30	EXT TO CORR 140 (S. ENTRANCE)	RX-QEL-XP98	INTEGRAL TO HDW		EPT10 (DIV 8)	YES	YES - CR & SCHEDULE		YES (DIV 8)	INTERCOM STATION (DIV 27) INTRUSION KEY PAD DBL - (2) LEAVES ELECTRIFIED/MONITORED
140D	26	EXT TO CORR 140 (N. ENTRANCE)					YES				DBL - (2) LEAVES MONITORED
BUILDING 2 (CTE BUILDING) - ALTERNATE BID 5 *											
C04	ADD ALT #5 - 03	EXT TO HALL C-04		ABV DOOR BY DIV 28	YES (DIV 8)		YES	YES - CR & SCHEDULE		YES (DIV 28)	INTERCOM STATION (DIV 27) INTRUSION KEY PAD
C06	ADD ALT #5 - 01	EXT TO GENERAL SHOP C-06					YES				
C07	ADD ALT #5 - 01	EXT TO MATERIAL C-07					YES				
BUILDING 3 (FIELD HOUSE) - ALTERNATE BID 5 *											
D04A	ADD ALT #5 - 02	EXT TO HALL D-04 - NORTH	EL KIT	INTEGRAL TO HDW			YES	YES - CR & SCHEDULE		YES (DIV 28)	INTERCOM STATION (DIV 27) INTRUSION KEY PAD
D04B	ADD ALT #5 - 02	EXT TO HALL D-04 - SOUTH	EL KIT	INTEGRAL TO HDW			YES	YES - CR & SCHEDULE		YES (DIV 28)	
D21	ADD ALT #5 - 01	EXT TO MUD ROOM D-21					YES				
PORTABLE - ALTERNATE BID 5 *											
P1	ADD ALT #5 - 01	EXT TO CLASSROOM P1					YES				INTRUSION KEY PAD
P2	ADD ALT #5 - 01	EXT TO CLASSROOM P2					YES				

* NOTE - DOOR NUMBERS NOT SHOWN ON DRAWINGS, INCLUDED HERE FOR REFERENCE

PROVIDE ROUGH-IN & WIRING FOR ALL COMPONENTS PER MANUFACTURER & SUPPLIER SHOP DRAWINGS & WIRING DIAGRAMS.
PROVIDE LINE VOLTAGE POWER FOR ALL POWER SUPPLIES FURNISHED BY DIV 8.
PROVIDE POWER SUPPLIES UNDER DIV 28 SECTIONS WHERE NOTED IN SCHEDULE.



REF. SHEET

E402