



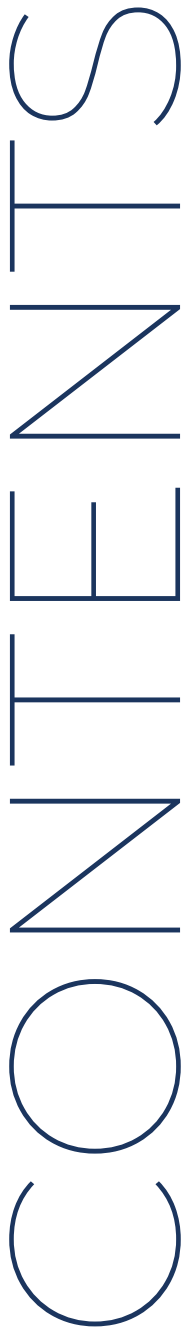
2
0
2
3



INTERNATIONAL STUDENTS NEWCOMER'S GUIDE FOR BRYAN COUNTY SCHOOLS

www.bryan.k12.ga.us

Table of Contents



03.

About our District

06.

About our Students

07.

Richmond Hill Area Schools:

- Richmond Hill Primary
- Richmond Hill Elementary
- George Washington Carver Elementary
- Frances Meeks Elementary
- McAllister Elementary
- *Elementary School ESOL Teacher Contact Information*
- Richmond Hill Middle School
- Richmond Hill High School
- *Middle and High School ESOL Teacher Contact Information*

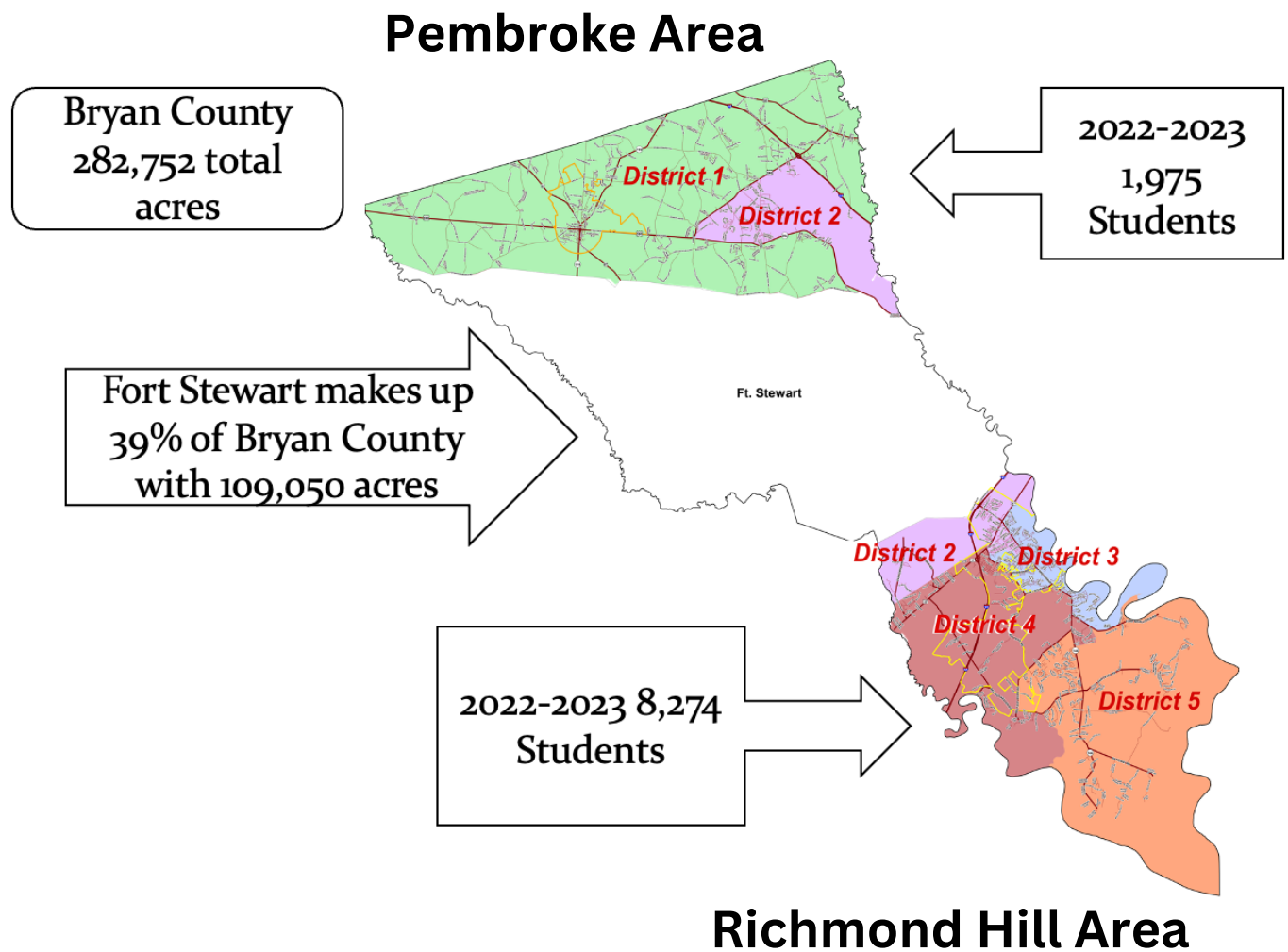
27.

Pembroke Area Schools:

- Bryan County Elementary
- Bryan County Middle High School
- *Pembroke area ESOL Teacher Contact Information*

ABOUT OUR DISTRICT

Bryan County Schools is the only system in the country bisected by a military installation that comprises 39% of the land mass. While the two ends of the county may have varying needs, the governance team is intentional to ensure all stakeholders feel they have an equitable voice, and the district remains united as ONE BRYAN.



Bryan County Schools is comprised of six elementary schools, two middle schools, and two high schools that serve over 10,300 students. As of January 2023, over 400 students have a primary language other than English (33 languages are represented other than English) and 190 students receive English Language services from a certified ESOL teacher. The primary responsibilities of the ESOL teacher include:

- a. Teaches, screens, tests, monitors, records, and reports the progress of English learners (ELs). ESOL teachers instruct English learners at various levels (elementary, middle, or high school) using research-based strategies of language acquisition to maximize opportunities for academic improvement and success.
- b. Provides English language assistance services using district approved delivery models for English learners (ELs) at all levels of English language development. ESOL teachers instruct English learners, using research-based teaching methods and frameworks (e.g. SIOP); and a variety of supplemental resources. ESOL teachers assign lessons and correct homework; administer assessments; monitor/evaluate achievement progress; and record/share results with faculty, school officials, and parents.
- c. Prepares course outlines and objectives aligned to WIDA Standards and academic language of Georgia Standards of Excellence/Georgia Performance Standards according to state and district requirements.
- d. Monitors, prepares, and maintains EL documents related to services, accommodations, and student progress as required by federal, state, and district mandates.
- e. Maintains classroom discipline and behavior outside the classroom as assigned.
- f. Collaborates with general education teachers and provides instructional resources to enhance teaching and learning. Works with support staff to provide the best instructional program for English learners.
- g. Conducts parent/teacher conferences (including Reclassification meetings, LACs, ELL/TPC, etc.) to review EL instructional accommodations, progress, performance, and behavior.
- h. Conducts EL-related professional learning for school staff. Facilitates and/or participates in school events to promote EL parent engagement.
- i. Participates in faculty/professional meetings, conferences, and teacher training workshops.

In Bryan County Schools, there are 5 primary languages other than English spoken by students:

- 1.Spanish
- 2.Korean
- 3.Chinese
- 4.Gujarati
- 5.German

Bryan County Schools is a high performing school district that annually outperforms the state in both English Language Arts and Math. In addition, ACCESS and ELLs (ACCESS) is the state mandated summative English Language proficiency assessment that is administered to English Learners every year. Bryan County Schools English Learner students, especially our elementary students (grades K-5), make significant progress toward English Language Proficiency as evidenced by last year's data:

2022 CCRPI All Elementary School District Data

PROGRESS TOWARDS ENGLISH LANGUAGE PROFICIENCY

100.00+

	ACCESS for ELLs Performance Bands			
	No Positive Movement	Moved Less Than One Band	Moved One Band	Moved More Than One Band
ENGLISH LEARNERS	8.47%	8.47%	10.17%	72.88%

ABOUT OUR STUDENTS

Students with Primary Language other than English = 423

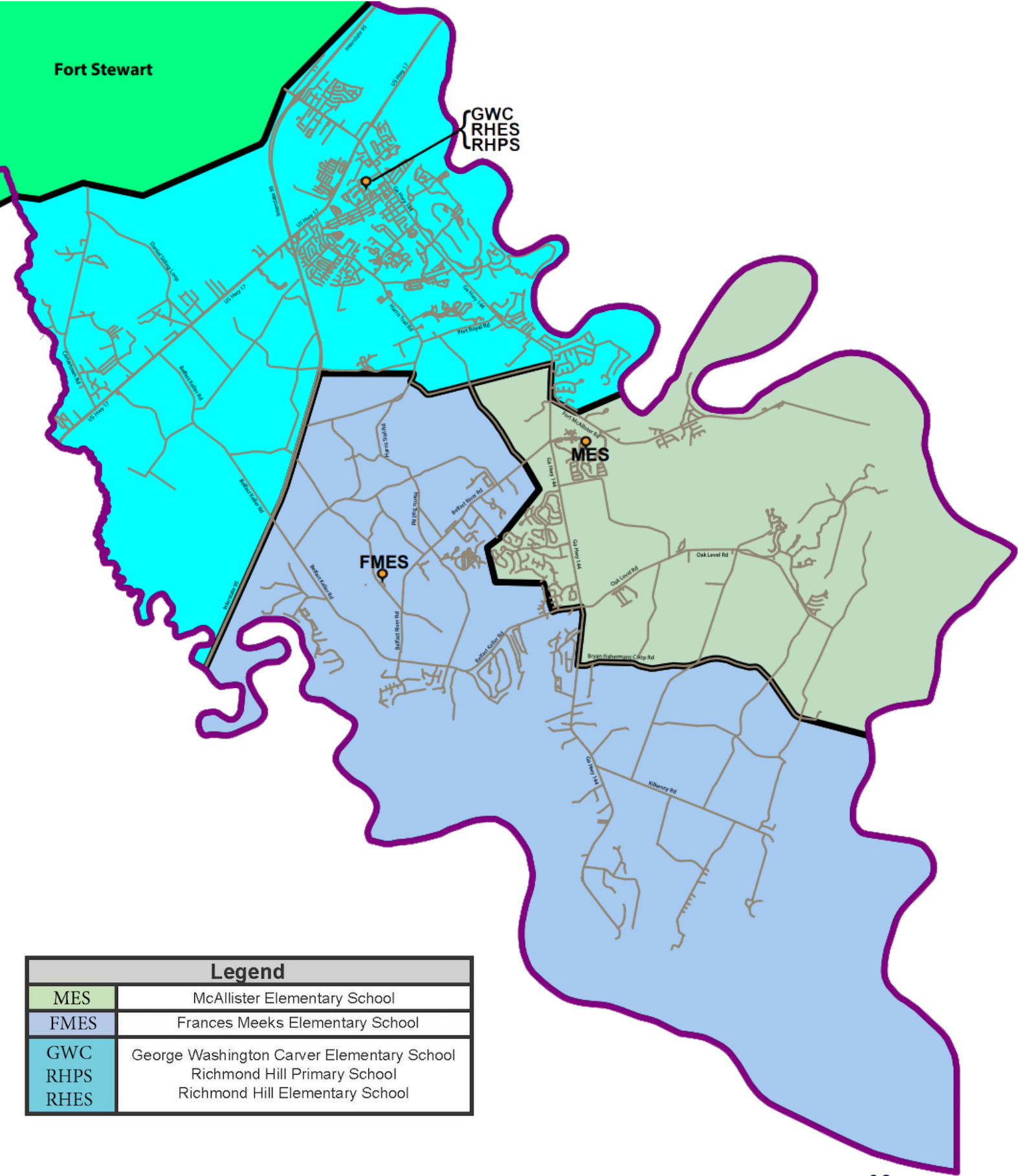
	Student Primary Language				
School	Spanish	Korean	Chinese	Gujarati	German
Bryan County Elementary	17	-	-	-	-
Bryan County Middle High School	15	-	2	-	1
France Meeks Elementary	6	8	1	-	-
G. W. Carver Elementary	16	7	8	3	2
McAllister Elementary	5	5	3	-	3
Richmond Hill Elementary	12	9	7	1	1
Richmond Hill High School	52	14	4	12	6
Richmond Hill Middle School	39	17	4	8	5
Richmond Hill Primary School	17	12	7	6	-
Grand Total	179	72	36	30	18

** Students that are included in count, have indicated on their home language survey that they have another language in the home. Not all families need ESOL services so they mark English for all questions on their home language survey.

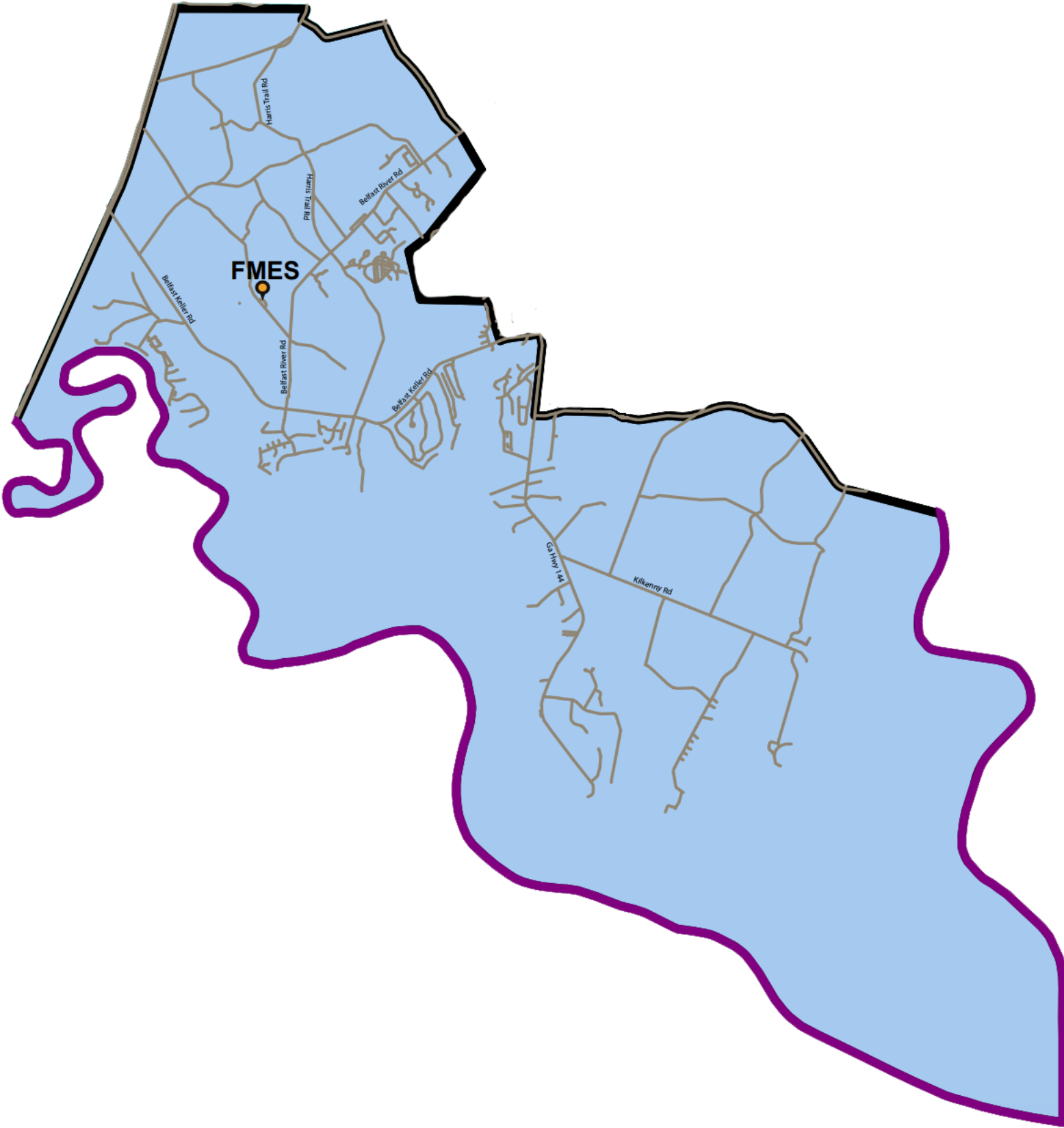
RICHMOND HILL AREA SCHOOLS



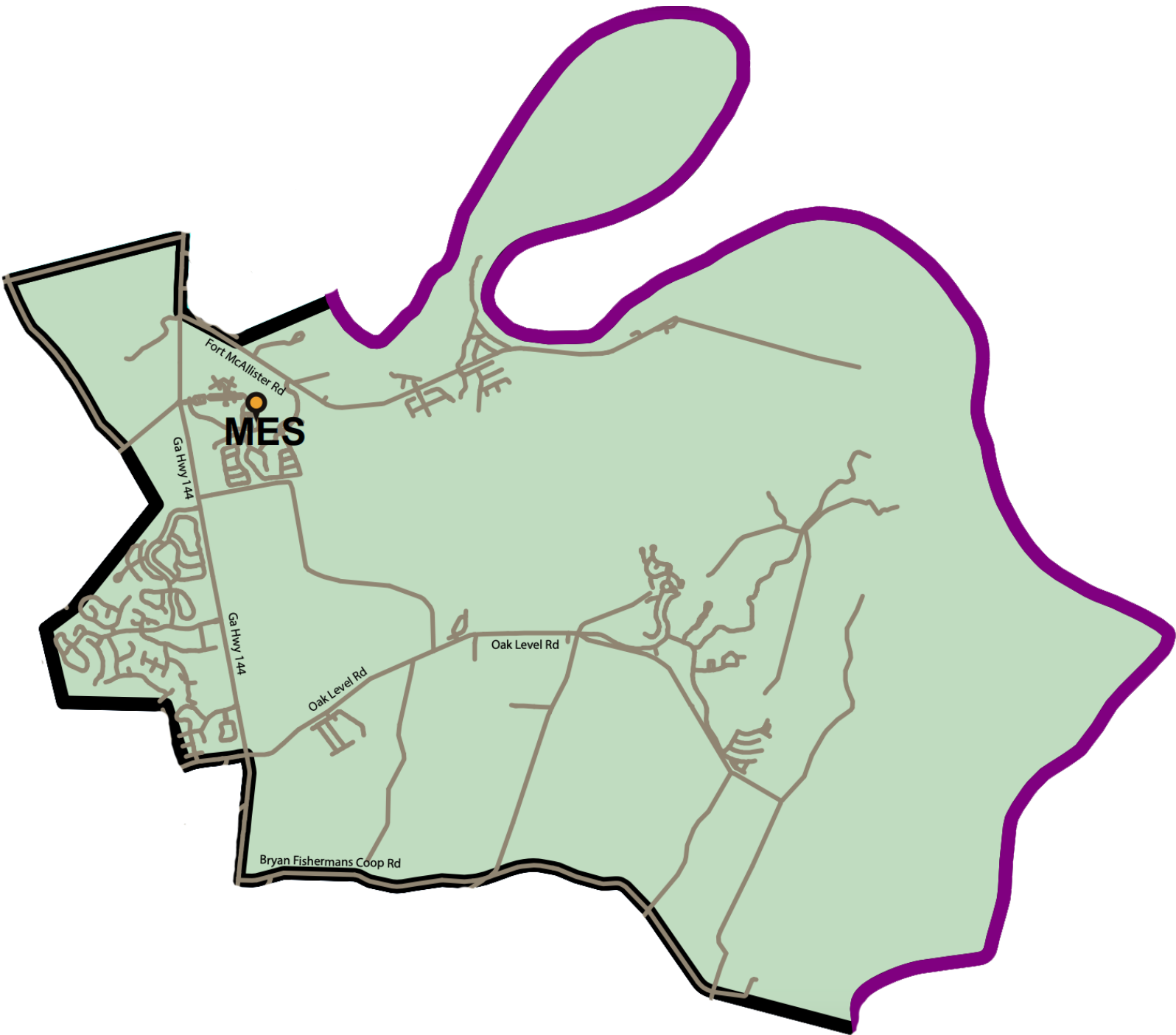
RICHMOND HILL AREA SCHOOL ZONE MAP



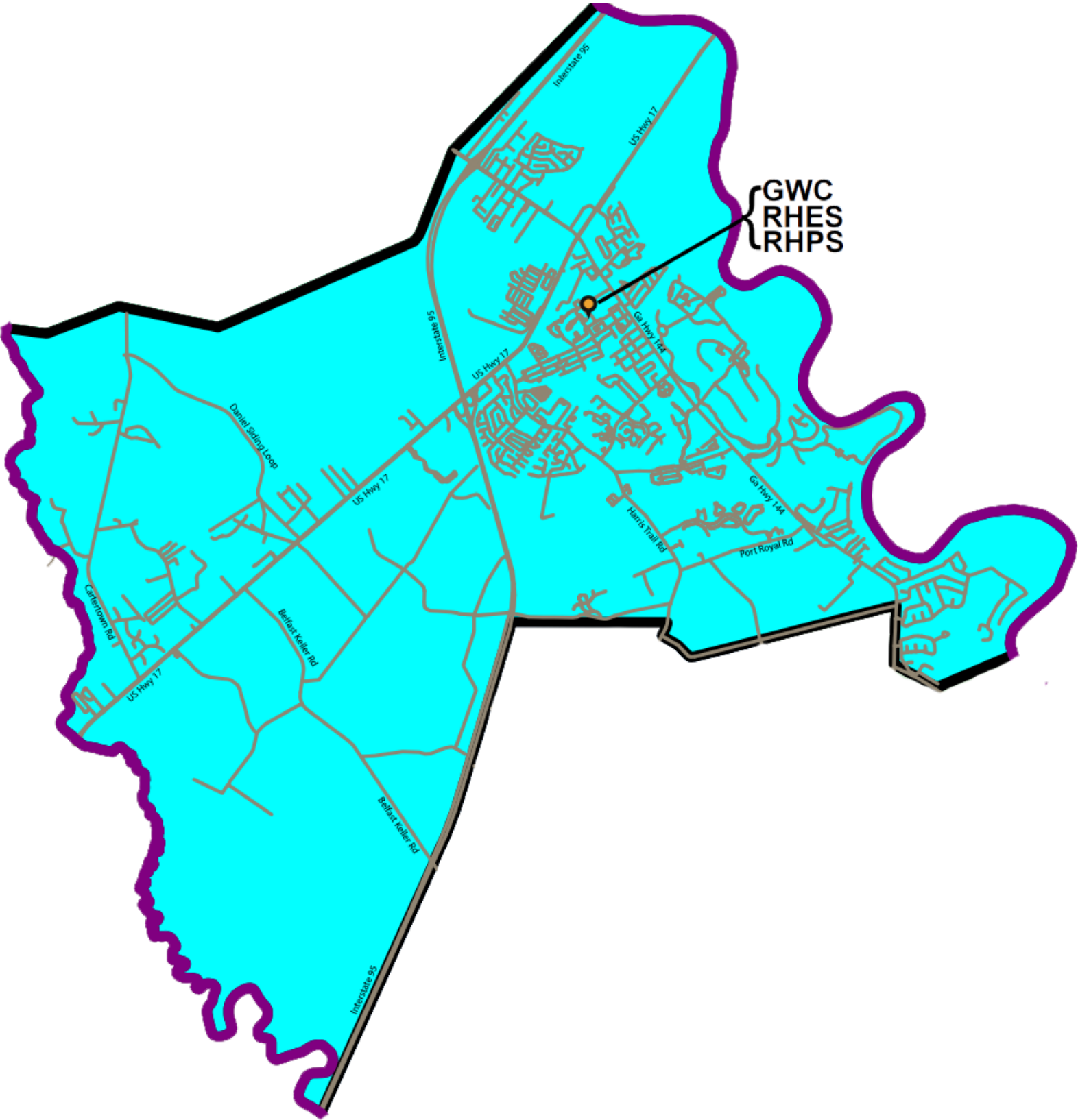
FRANCES MEEKS ELEMENTARY SCHOOL ZONE MAP



MCALLISTER ELEMENTARY SCHOOL ZONE MAP



G.W. CARVER ELEMENTARY, RICHMOND HILL
ELEMENTARY, AND RICHMOND HILL PRIMARY
SCHOOL ZONE MAP



RICHMOND HILL AREA SCHOOL ZONE LIST BY NEIGHBORHOOD

Neighborhoods						
FMES		MES		GWC, RHES, RHPS		
Belle Island	Magnolia Marsh	Buckhead	Woodland Trail	Ashton Apartments	Melrose	Strathy Hall
Brigham Lakes	Marsh Harbour	Buckhead East		Brisbon	Mill Hill	The Bottom
Bowridge	Oak Pointe	Buckhead North		Charlies Road	Mulberry	The Commons
Buckland Hall	Palm Bay	Fort McAllister Road (The Spur)		Creek Valley	Oxford	The Cove
Dunham Marsh	Seascape	Kinsale		Cypress Point	Piercefield	Plantation Apts/ The Villas of RH
Fancy Hall	Sweet Hill	Lenox		Ford Plantation	Richmond Heights	Turtle Hill
Heartwood	The Bluffs	McAllister Pointe		Frugality Hall	Richmond Place	Whiteoak
Heron Point	Tivoli Marsh	Oak Level Road		Harris Trail Townhomes	Richmond Hill Plantation	
Jerico	Waterford Landing	Redbird Creek		Holly Hill	River Oaks	
Kenmare	Watergrass	Sterling Meadows		Latitude Apartments	Sterling Creek	
Kilkenny	Wexford Plantation	The Sanctuary		Live Oak	Sterling Links	
Laurel Grove	Wicklow	Tranquilla Hall		Mainstreet	Sterling Woods	
Magnolia Hill		Waterways Township				

Legend	
MES	McAllister Elementary School
FMES	Frances Meeks Elementary School
GWC RHPS RHES	George Washington Carver Elementary School Richmond Hill Primary School Richmond Hill Elementary School

RICHMOND HILL PRIMARY SCHOOL

GRADES SERVED:

PRE-KINDERGARTEN
KINDERGARTEN
1ST GRADE

SCHOOL HOURS:

8:50 AM - 3:50 PM

SCHOOL PHONE:

912-459-5080



**MRS. NANCY HIGHSMITH,
PRINCIPAL**

ADDRESS:

RICHMOND HILL PRIMARY
471 FRANCES MEEKS WAY
RICHMOND HILL, GA 31324

WEBSITE:

[HTTPS://RHPS.BRYANCOUNTYSCHOOLS.ORG/O/RHPS](https://rhps.bryancountyschools.org/o/rhps)

SOCIAL MEDIA:

FACEBOOK: @RHPRIMARYSCHOOL
TWITTER: @RICHMONDHILL_PS

RICHMOND HILL ELEMENTARY SCHOOL

GRADES SERVED:

2ND GRADE

3RD GRADE

SCHOOL HOURS:

8:50 AM - 3:50 PM

SCHOOL PHONE:

912-459-5100

ADDRESS:

RICHMOND HILL ELEMENTARY

473 FRANCES MEEKS WAY

RICHMOND HILL, GA 31324

WEBSITE:

[HTTPS://RHES.BRYANCOUNTYSCHOOLS.ORG/O/RHES](https://rhес.bryancountyschools.org/o/rhes)

SOCIAL MEDIA:

FACEBOOK: @RHES.WILDCATS

TWITTER: @RHES_WILDCATS



**DR. KEN DEAL,
PRINCIPAL**

G.W. CARVER ELEMENTARY

GRADES SERVED:

4TH GRADE

5TH GRADE

SCHOOL HOURS:

8:50 AM - 3:50 PM

SCHOOL PHONE:

912-459-5111

ADDRESS:

G.W. CARVER ELEMENTARY

476 FRANCES MEEKS WAY

RICHMOND HILL, GA 31324

WEBSITE:

[HTTPS://WWW.BRYANCOUNTYSCHOOLS.ORG/O/CES](https://www.bryancountyschools.org/o/ces)

SOCIAL MEDIA:

FACEBOOK: @GWCES.WILDCATS

TWITTER: @CARVERES_RH



**MRS. KAREN W. SMITH,
PRINCIPAL**

RICHMOND HILL PRIMARY DROP-OFF & PICK-UP

All traffic will enter from Ford Avenue at Cherry Street

- Turn right on Linwood Ave
- Turn left on Maple St.
- Turn right on the drive behind RHPS
- Morning drop-off/afternoon pick-up will be on the left hand side of the car
- Traffic will exit by taking a right onto Frances Meeks Way

RICHMOND HILL ELEMENTARY AND/OR G.W. CARVER DROP-OFF & PICK-UP

All traffic will enter Frances Meeks Way

- Drive past the entrances of RHES/GWC towards the back of RHES/GWC
- Morning drop-off/afternoon pick-up will be on the right hand side of the car
- After morning pick-up/afternoon drop-off, traffic will proceed to Maple St. to exit on either Constitution Way, Ivey St. or Cherry St

RICHMOND HILL PRIMARY AND/OR RHES/GWC DROP-OFF & PICK-UP

All traffic will enter Frances Meeks Way

- Drive past the entrances of RHES/GWC towards the back of RHES/GWC
- Morning drop-off/ afternoon pick-up will be on the right-hand side of the car at RHES/ GWC
- Proceed to Maple St.; turn left at the drive behind RHPS
- Morning drop-off/ afternoon pick-up will be on the left-hand side of the car
- Traffic will exit by taking right onto Frances Meeks Way

FRANCES MEEKS ELEMENTARY

GRADES SERVED:

PRE-KINDERGARTEN
KINDERGARTEN
1ST GRADE
2ND GRADE
3RD GRADE
4TH GRADE
5TH GRADE

SCHOOL HOURS:

7:40 AM – 2:40 PM

SCHOOL PHONE:

912-851-4100

ADDRESS:

FRANCES MEEKS ELEMENTARY SCHOOL
488 WARREN HILL ROAD
RICHMOND HILL, GA 31324

WEBSITE:

[HTTPS://FMES.BRYANCOUNTYSCHOOLS.ORG/O/FMES](https://fmes.bryancountyschools.org/o/fmes)

SOCIAL MEDIA:

FACEBOOK: @FRANCESMEEKSES
TWITTER: @FRANCESMEEKSES



**DR. BRITTNEY MOBLEY,
PRINCIPAL**

FRANCES MEEKS ELEMENTARY DROP OFF & PICK UP

TRAVEL DOWN WARREN HILL ROAD AND TAKE YOUR THIRD RIGHT INTO THE SCHOOL.

- The morning drop-off/afternoon pickup area is around the loop that runs across the back of the school

MORNING DROP-OFF

- Cars will travel in a single lane
- Children will exit the right-hand side of the car

AFTERNOON PICKUP

- Cars will be double stacked for loading.

MCALLISTER ELEMENTARY

GRADES SERVED:

PRE-KINDERGARTEN
KINDERGARTEN
1ST GRADE
2ND GRADE
3RD GRADE
4TH GRADE
5TH GRADE

SCHOOL HOURS:

7:40 AM – 2:40 PM

SCHOOL PHONE:

912-851-4040

ADDRESS:

MCALLISTER ELEMENTARY SCHOOL
224 VETERAN'S MEMORIAL PARKWAY
RICHMOND HILL, GA 31324

WEBSITE:

[HTTPS://MES.BRYANCOUNTYSCHOOLS.ORG/O/MES](https://mes.bryancountyschools.org/o/mes)

SOCIAL MEDIA:

FACEBOOK: @MCALLISTERELEMENTARYRH
TWITTER: @MCALLISTER_ES



**MRS. HEATHER TUCKER,
PRINCIPAL**

MCALLISTER ELEMENTARY DROP OFF & PICK UP

MORNING DROP-OFF (PRE-K-1ST)

- Take Captain Matthew Freeman Parkway towards the recreation ball fields
- Turn into the 2nd school entrance
- The morning drop-off area is around the loop that runs across the back of the school
- Children will exit the right hand side of the car

**If you have any students in grades PreK-1st, you will utilize only this route.*

MORNING DROP-OFF (2ND-5TH)

- Enter through the bus entrance in front of the school
- The morning drop-off area is the loop in front of the main office
- Children will exit from the right hand side of the car
- This route should only be utilized if you only have students in grades 2nd-5th

** If you have students in grades Pre-K-1st, you will utilize the above route for all students.*

AFTERNOON PICK-UP (ALL STUDENTS)

- Take Captain Matthew Freeman Parkway towards the ball fields
- Turn into the 2nd school entrance
- The afternoon pick-up area is around the loop that runs across the back of the school
- After you pass the gate, traffic can sort into two lines

** If you are picking up any students in grades PK-1, please utilize the inside lane ONLY.*

**If you are only picking up students in grades 2-5, please utilize the outside lane ONLY.*

MEET OUR RICHMOND HILL AREA ELEMENTARY ESOL TEACHERS



MS. DINAH ZOUFAL

SCHOOLS SERVED:

RICHMOND HILL PRIMARY & RICHMOND HILL
ELEMENTARY

CONTACT MS. ZOUFAL:

EMAIL: DZOUFAL@BRYAN.K12.GA.US

PHONE: 912-851-4000



MS. JULI LEE

SCHOOLS SERVED:

G.W. CARVER ELEMENTARY & RICHMOND
HILL ELEMENTARY

CONTACT MS. LEE:

EMAIL: JLEE@BRYAN.K12.GA.US

PHONE: 912-851-4000



MRS. WHITNEY GALE

SCHOOLS SERVED:

MCALLISTER ELEMENTARY & FRANCES MEEKS
ELEMENTARY

CONTACT MRS. GALE:

EMAIL: WGALE@BRYAN.K12.GA.US

PHONE: 912-851-4000

RICHMOND HILL MIDDLE SCHOOL

GRADES SERVED:

6TH GRADE

7TH GRADE

8TH GRADE

SCHOOL HOURS:

8:00 AM – 3:00 PM

SCHOOL PHONE:

912-459-5130

ADDRESS:

RICHMOND HILL MIDDLE SCHOOL

503 WARREN HILL ROAD

RICHMOND HILL, GA 31324

WEBSITE:

[HTTPS://RHMS.BRYANCOUNTYSCHOOLS.ORG/O/RHMS](https://rhms.bryancountyschools.org/o/rhms)

SOCIAL MEDIA:

FACEBOOK: @RICHMONDHILLMIDDLE

TWITTER: @RICHMONDHILLMS



**MR. JONATHAN LEA,
PRINCIPAL**

RICHMOND HILL MIDDLE SCHOOL DROP OFF & PICK UP

6TH GRADE/SIBLING MORNING DROP-OFF:

- Stay in the right lane on Warren Hill Road
- Turn left into the third entrance to the school and follow it around to the loop in front of building

7TH & 8TH GRADE MORNING DROP-OFF:

- Stay in the center lane on Warren Hill Road
- Turn left into the second entrance to the school and follow along in front of the building

6TH GRADE AFTERNOON PICK-UP:

- Stay in the right lane on Warren Hill Road
- Turn right into the first entrance to Frances Meeks Elementary
- Follow behind Frances Meeks Elementary
- Turn right onto Warren Hill Road, turn left into the middle school and follow road around to the loop in the front of the building

AFTERNOON PICK-UP:

- Stay in the right lane on Warren Hill Road
- Turn right into the first entrance to Frances Meeks Elementary
- Follow behind Frances Meeks
- Cross over Warren Hill Road into the middle school and follow road around to the loop in the front of the building

RICHMOND HILL HIGH SCHOOL

GRADES SERVED:

9TH GRADE
10TH GRADE
11TH GRADE
12TH GRADE

SCHOOL HOURS:

7:30 AM – 2:25 PM

SCHOOL PHONE:

912-459-5151

ADDRESS:

RICHMOND HILL HIGH SCHOOL
1 WILDCAT DRIVE
RICHMOND HILL, GA 31324

WEBSITE:

[HTTPS://RHHS.BRYANCOUNTYSCHOOLS.ORG/O/RHHS](https://rhhs.bryancountyschools.org/o/rhhs)

SOCIAL MEDIA:

FACEBOOK: @RICHOMONDHILLHIGH
TWITTER: @RICHMONDHILL_HS



MR. BIVINS MILLER,
PRINCIPAL

RICHMOND HILL HIGH SCHOOL DROP-OFF & PICK-UP

MORNING DROP-OFF/AFTERNOON PICK-UP:

- Turn off of Harris Trail at the West Campus entrance to loop in front of West Campus
- Traffic will exit by taking a right onto Harris Trail

ADDITIONAL MORNING DROP-OFF ONLY:

- Turn onto Wildcat Drive and follow it around the back of East Campus
- Turn left into the parking lot for drop-off in front of the East Gym
- Exit by taking a right onto Wildcat Drive

FOR STUDENT ASSISTED DROP-OFF:

- Turn onto Wildcat Drive and take the 2nd entrance into the 1st parking lot for drop-off in front of East Campus
- Exit by circling through the first row of the parking lot to take a right onto Wildcat Drive.

MEET OUR RICHMOND HILL AREA MIDDLE/HIGH SCHOOL ESOL TEACHERS



MS. KELLY BARTH

SCHOOLS SERVED:

RICHMOND HILL MIDDLE SCHOOL

CONTACT MS. BARTH:

EMAIL: KBARTH@BRYAN.K12.GA.US

PHONE: 912-851-4000



MRS. NICOLE LUKKARINEN

SCHOOLS SERVED:

RICHMOND HILL MIDDLE SCHOOL &
RICHMOND HILL HIGH SCHOOL

CONTACT MRS. LUKKARINEN:

EMAIL: NLUKKARINEN@BRYAN.K12.GA.US

PHONE: 912-851-4000

PEMBROKE AREA SCHOOLS



BRYAN COUNTY ELEMENTARY SCHOOL

GRADES SERVED:

PRE-KINDERGARTEN
KINDERGARTEN
1ST GRADE
2ND GRADE
3RD GRADE
4TH GRADE
5TH GRADE



**MRS. ALISON HOLCOMBE,
PRINCIPAL**

SCHOOL HOURS:

8:30 AM – 3:30 PM

SCHOOL PHONE:

912-626-5033

ADDRESS:

BRYAN COUNTY ELEMENTARY SCHOOL
250 PAYNE DRIVE
PEMBROKE, GA 31321

WEBSITE:

[HTTPS://BCES.BRYANCOUNTYSCHOOLS.ORG/O/BCES](https://bc.es.bryancountyschools.org/o/bces)

SOCIAL MEDIA:

FACEBOOK: @BRYANCOUNTYES
TWITTER: @BRYANCOUNTYES

BRYAN COUNTY ELEMENTARY SCHOOL

DROP-OFF & PICK UP

Students will be dismissed based on the information that is given to the school from parents during enrollment and Open House.

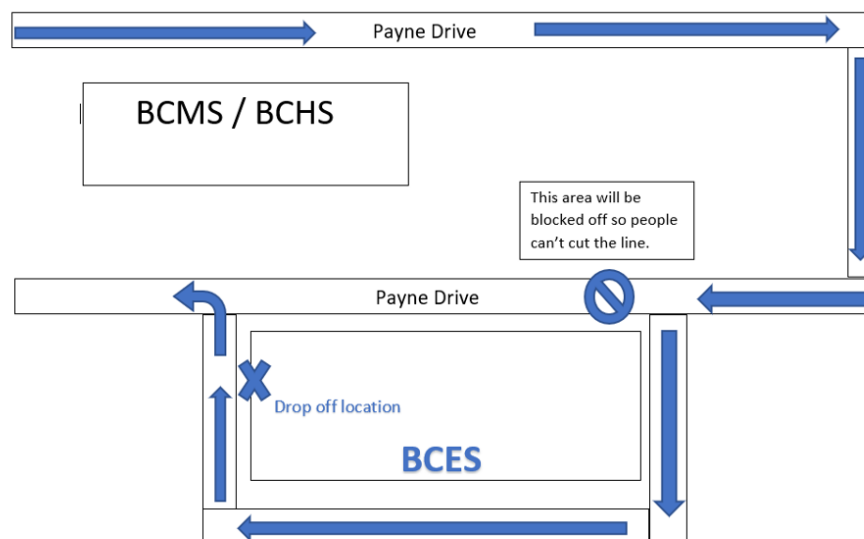
Any changes in a student's regular afternoon procedure (bus or pick-up) MUST be in writing and received by 2:00pm.

There are two approved methods for making transportation changes:

1. Send a note to the teacher. Include address to go to, date, and parent signature.
2. Send a text message to 912-292-9315. Include the student's full name, your child's teacher's name, and the new address they need to go to.
 - Texts must come from a phone number you have registered with the school.
 - All messages must be received by 2:00pm at the latest.
 - Messages will be checked at 2:00pm and you will receive a response from the school between 2:05 -2:30 pm.

This number is not a working telephone number and therefore, does not receive phone calls. It only receives text messages.

The school does not accept phone calls as a means of changing a student's transportation.



BRYAN COUNTY MIDDLE HIGH SCHOOL

GRADES SERVED:

6TH GRADE
7TH GRADE
8TH GRADE
9TH GRADE
10TH GRADE
11TH GRADE
12TH GRADE

SCHOOL HOURS:

8:00 AM – 3:00 PM

SCHOOL PHONE:

MIDDLE SCHOOL: 912-626-5050
HIGH SCHOOL: 912-626-5060

ADDRESS:

BRYAN COUNTY MIDDLE SCHOOL
600 PAYNE DRIVE
PEMBROKE, GA 31321
BRYAN COUNTY HIGH SCHOOL
1234 CAMELLIA DRIVE
PEMBROKE, GA 31321

WEBSITE:

[HTTPS://WWW.BRYANCOUNTYSCHOOLS.ORG/O/BCMHS](https://www.bryancountyschools.org/o/bcmhs)

SOCIAL MEDIA:

FACEBOOK: @ BRYANCOUNTYMHS
TWITTER: @BRYANCOUNTYMHS



MR. RUSS WINTER,
PRINCIPAL

MEET OUR PEMBROKE AREA ESOL TEACHER



MRS. TARA LASHLEY

SCHOOLS SERVED:

BRYAN COUNTY ELEMENTARY SCHOOL &
BRYAN COUNTY MIDDLE HIGH SCHOOL

CONTACT MS. BARTH:

EMAIL: TLASHLEY@BRYAN.K12.GA.US

PHONE: 912-851-4000