

Addendum #02

Date: July 2, 2021

Project: Huntington Middle School Modernization and Addition

The additions, clarifications and corrections herein shall be made to the Project Manual, Drawings and Schedules for the above-referenced project, and shall be included in the scope of work and proposals to be submitted.

NOTE: References made below to the Project Manual and Drawings shall be used as a general guide only. The Bidders themselves shall determine the work affected by the Addendum items.

GENERAL ANNOUNCEMENT:

Item #01 **ADDENDUM #03 TO BE PUBLISHED JULY 14TH 2021**
Add. #02

PROJECT MANUAL ITEMS

Item #02 Section 000100 TABLE OF CONTENTS
Add. #02 **Revise:** 012400 "Unit Prices and Allowances" to "012400 Unit Prices"

Item #03 Section 012400 UNIT PRICES AND ALLOWANCES
Add. #02 **Replace:** with attached Section 012400 – Unit Prices in its entirety.

Item #04 Section 262000 – Electrical Distribution
Add. #02 **Revise** Paragraph 2.2, sub-paragraph J to read:
"J. Bussing: Copper with full copper neutral. Provide ground bus."

Revise Paragraph 2.4, sub-paragraphs G to read:
"G. Bussing: Copper with full neutral and ground bus. Provide separate ground bus isolated from cabinet where isolated grounding requirements are indicated."

Add to Paragraph 2.4, sub-paragraphs K and L as follows:
"K. Main Overcurrent Protective Device(s): UL 489; molded case circuit breaker with thermal magnetic trip fixed mounted, single handle common pole operation, AIC rating greater than available symmetrical short circuit amperes. Main circuit breakers required to selectively coordinate shall have LI or LSI solid state trip.

- L. Provide sheet metal skirt with matching panelboard finish from bottom of surface mounted panelboards to floor."

Add to Part 3, Paragraph 3.10 as follows:

- "3.10. Training: Provide training on surge protective devices, customer metering systems, features of switchgear and building distribution system. Allow one hour scheduled at convenience of Owner."

Item #05 Section 265500 – Performance Lighting System

Add. #02 **Add** to Paragraph 2.2, sub-paragraph A.: "Altman 450 Power & Data Distribution Strip."

Revise Paragraph 2.3, sub-paragraph A. quantity of instruments from "(12)" to "(24)".

Revise Paragraph 2.3, sub-paragraph B. quantity of instruments from "(12)" to "(24)".

Item #06 Section 271001 – Telecommunications Premises Wiring

Add. #02 **Add** to Paragraph 2.3, sub-paragraphs G and H as follows:

"G. Outdoor In-Line PoE Surge Protector: IP66, Cat 6/6a compliant, 1Gps with mounting hardware, cable glands and grounding wire; 2-year warranty. Tripp-Lite B110-SP-CAT-OD or equal.

H. PoE Power Extenders: Perle eXP-S110-XT- PoE/PoE+ Gigabit Ethernet Extenders, or equal."

Revise: Paragraph 2.6, sub-paragraph B as follows:

"B. Equipment Cabinet, Wall: 42" high x 24" wide x 9.7" deep, light grey finish, with fan kit, grounding kit, mounting hardware, 5U bracket and cylinder lock capable of accepting District standard. Hubbell ReBox RE4X."

Revise: Paragraph 2.6, sub-paragraph C as follows:

"C. Equipment Racks, Floor, 4-Post: Aluminum self supporting frame designed for open rack mounting of telecommunications equipment, base anchor design, pre-drilled EIA mounting holes, 19 inches wide by 84 inches high x 29" deep unless otherwise indicated. Chatsworth Products QuadraRack or equal. Provide four equipment shelves with mounting hardware. Finish: black."

Item #07 Section 281300 – Electronic Access Control
Add. #02 **Delete** “Enterprise” from Paragraph 2.1, sub-paragraph A, 1.

Delete “Genetec” from Paragraph 2.5, sub-paragraph A.

Item #08 035400 – CAST UNDERLAYMENT
Add. #2 **Revise:** Line 2.2.B.1

1. Compressive Strength: Minimum 4000 pounds per square inch after 28 days, tested per ASTM C109/C109M.

Item #09 Approval of Substitutions
Add. #02 The following is a list of approved manufacturers which may be substituted for those specified in the specifications.

This approval is an approval of quality only. No attempt has been made to check each material as to special features, capacities or physical dimensions especially required by this project. It shall be the responsibility of the supplier, manufacturer and contractor to check all requirements before submitting for final approval. Final approval of exact features, sizes, capacities, etc., all of which must match materials indicated/specified, will be determined when submitted during construction period. Certain approvals are subject to conditions as noted.

Section	Product/Manufacturer	Comments
230593	Testing and Commissioning Services, LLC (TAC)	Accepted
072113	Johns Manville CladStone 45 Water & Fire Block Insulation	Accepted
072116	Johns Manville Mineral Wool Sound Attenuation Batts SAFB	Accepted
064100	Freemont Millwork Co	Accepted

DRAWING ITEMS

STRUCTURAL

Item #S01 S103A – ROOF BUILDING 1 AREA A – ROOF FRAMING PLAN

Add. #02 **Add** text callout near intersection of grids x6 and xF to read “ADD ALT #8: AT (E) 2x CEILING MEMBERS SUPPORTING THE ELECTRICAL PERFORMANCE LIGHTING, PROVIDE FULL DEPTH BLOCKING ON EACH SIDE OF (E) CEILING MEMBER AT THIRD POINTS ALONG THE SPAN. TOENAIL BLOCKING TO (E) FRAMING w/ (4) 10d NAILS @ EACH END.” with four leader arrows pointing to the approximate location of the performance lighting systems below the ceiling in the gym.

Item #S02 S205 – BUILDING 1 STRUCTURAL WALL ELEVATIONS

Add. #02 **Add** text callout to wall elevation 21/S205 to read “(E) WALL OPENING FOR (E) MECH DUCT, EXACT LOCATION UNKOWN, GC VERIFY. IF (E) OPENINGS ARE NOT LOCATED WITHIN THE PROVIDED OPENINGS SHOWN, ROUGHEN CONCRETE WALL WITHIN (E) OPENINGS TO 1/4" AMPLITUDE, APPLY CONCRETE BONDING AGENT, AND FILL OPENINGS WITH CONCRETE. FINISHED CONDITION SHALL BE FLUSH w/ (E) WALL ON BOTH SIDES. GC VERIFY (E) OPENINGS REQUIRING INFILL IN FIELD, THIS APPLIES TO ALL (E) MECH OPENINGS IN THIS ELEVATION.” with two leader arrows pointing to the existing wall shown in the elevation directly below Bottom of Roof level and Level 2.

Add text callout to wall elevation 22/S205 to read “(E) WALL OPENING FOR (E) MECH DUCT, EXACT LOCATION UNKOWN, GC VERIFY. IF (E) OPENINGS ARE NOT LOCATED WITHIN THE PROVIDED OPENINGS SHOWN, ROUGHEN CONCRETE WALL WITHIN (E) OPENINGS TO 1/4" AMPLITUDE, APPLY CONCRETE BONDING AGENT, AND FILL OPENINGS WITH CONCRETE. FINISHED CONDITION SHALL BE FLUSH w/ (E) WALL ON BOTH SIDES. GC VERIFY (E) OPENINGS REQUIRING INFILL IN FIELD, THIS APPLIES TO ALL (E) MECH OPENINGS IN THIS ELEVATION.” with two leader arrows pointing to the existing wall shown in the elevation directly below Bottom of Roof level and Level 2.

Add text callout to wall elevation 23/S205 to read “(E) WALL OPENING FOR (E) MECH DUCT, EXACT LOCATION UNKOWN, GC VERIFY. IF (E) OPENINGS ARE NOT LOCATED WITHIN THE PROVIDED OPENINGS SHOWN, ROUGHEN CONCRETE WALL WITHIN (E) OPENINGS TO 1/4" AMPLITUDE, APPLY CONCRETE BONDING AGENT, AND FILL OPENINGS WITH CONCRETE. FINISHED CONDITION SHALL BE FLUSH w/ (E) WALL ON BOTH SIDES. GC VERIFY (E) OPENINGS REQUIRING INFILL IN FIELD, THIS APPLIES TO ALL (E) MECH OPENINGS IN THIS ELEVATION.” with two (2) leader arrows pointing to the existing wall shown in the elevation directly below Bottom of Roof level and Level 2.

ARCHITECTURAL

Item #A01 A100A– LEVEL 0 AREA A – FLOOR PLAN
Add. #02 **Delete:** louver and louver tag L6 at MDF room 035.

Item #A02 A203– EXTERIOR ELEVATIONS
Add. #02 **Revise:** 2/A203 per attached **ADA-013**

Item #A03 A481– CEILING DETAILS
Add. #02 **Revise:** 14/A481 per attached **ADA-014**

Item #A04 A601– DOOR AND FRAME SCHEDULE
Add. #02 **Revise** DOOR SCHEDULE Door Type from type **N** to type **G** at doors: 012, 012C, 101, 102, 103, 107, 108B, 109A, 110, 114, 116, 120, 121A, 122, 123, 124, 145, 145A, 145B, 146, 148, 150A, 201, 201A, 202, 203, 207, 208, 209, 209B, 214, 214A, 215, 220, 221, 222, 224 and 233

Item #A05 A701– SIGNAGE SCHEDULE
Add. #02 **Revise:** ROOM SIGNAGE SCHEDULE, TEXT for door 243 to
“243 STORAGE
MAX STORAGE LOAD = 30 PSF”

MECHANICAL

Item #M01 MD402B – LEVEL 2 BUILDING 1 AREA B FLOOR PLAN – HVAC DEMO
Add. #02 **Revise** per attached **ADM-003**.

Item #M02 M300C – LEVEL 0 BUILDING 1 AREA C AUXILIARY GYM - PLUMBING
Add. #02 **Revise** per attached **ADM-004**.

Item #M03 M400A – LEVEL 0 BUILDING 1 AREA A – FLOOR PLAN - HVAC
Add. #02 Girls Locker Room 043, **Add** manual balancing damper to 12” diameter ductwork serving supply diffuser.

Item #M04 M401A – LEVEL 1 BUILDING 1 AREA A – FLOOR PLAN - HVAC
Add. #02 **Revise** per attached **ADM-005**.

Item #M05 M401A – LEVEL 2 BUILDING 1 AREA A – FLOOR PLAN - HVAC
Add. #02 Storage Room 203A, **Add** Keyed Note 14 to motorized damper serving exhaust fan EF-204.

ELECTRICAL

Item #E01 E001 – ELECTRICAL LEGEND

Add. #02 **Revise** description for half-shaded duplex receptacle with slash to read: “SPLIT WIRED DUPLEX RECEPTACLE CONTROLLED BY OCCUPANCY SENSOR OR TIME SWITCH”.

Revise description for duplex receptacle with slash to read: “DUPLEX RECEPTACLE CONTROLLED BY OCCUPANCY SENSOR OR TIME SWITCH”.

Item #E02 ED001 – ELECTRICAL SITE DEMOLITION PLAN

Add. #02 **Revise** per attached sheet **ED001**.

Item #E03 ED100 – LEVEL 0 – AREA A – DEMOLITION PLAN

Add. #02 **Revise** Boiler Room and Transformer Vault per attached **ADE-002**.

Revise Elevator Machine Room per attached **ADE-002**.

Revise Electrical Demolition Notes per attached **ADE-002**.

Add Bubble Notes per attached **ADE-002**.

Item #E04 ED101 – LEVEL 1– ELECTRICAL DEMOLITION PLAN

Add. #02 **Revise** Electrical Demolition Notes per attached **ADE-002**.

Item #E05 ED102 – LEVEL 2– ELECTRICAL DEMOLITION PLAN

Add. #02 **Revise** Electrical Demolition Notes per attached **ADE-002**.

Item #E06 E100 – ELECTRICAL SITE PLAN

Add. #02 **Revise** per attached sheet **E100**.

Item #E07 E200A – LEVEL 0 BUILDING 1 – AREA A – LIGHTING PLAN

Add. #02 **Add** to Bubble Note 9: “WITH SEPARATE ON/OFF/RAISE/LOWER CONTROLS FOR ZONES a,b,c & d”.

Add to Bubble Note 4: “LCP2 - 16 SPACE RELAY PANEL;
RELAY 1 – AREA LIGHTS;
RELAY 2 – BUILDING MOUNTED LIGHTS;
RELAY 3 – CAFETERIA ZONE a (DIMMING);
RELAY 4 – CAFETERIAL ZONE b (DIMMING);
RELAY 5 – CAFETERIA ZONE c (DIMMING);
RELAY 6 – CAFETERIA ZONE d (DIMMING);

RELAY 7 – STAIR B;
RELAY 8 – STAIR F;
RELAY 9-12 – SPARE.”

Add in Fan Room 031 line voltage switch adjacent to low voltage switch for control of south SL1.

Add note in Fan Room 031: “LIGHT FIXTURE IN FRONT OF ELECTRICAL PANELS TO BE CONTROLLED BY LINE VOLTAGE SWITCH, REMAINING LIGHTS TO BE CONTROLLED BY OCCUPANCY SENSOR SET TO AUTO ON & MANUAL SWITCH”.

Item #E08 E200C – LEVEL 0 BUILDING 1 – AREA C – LIGHTING PLAN

Add. #02 **Add** occupancy sensors and photo sensors to Vestibule. **Add** note: “LIGHTS TO BE SET TO AUTO ON WITH MANUAL OVERRIDE IN MAIN OFFICE 138”.

Add to Bubble Note 4: “LCP3 - 8 SPACE RELAY PANEL;
RELAY 1 – PARKING LOT LTS;
RELAY 2 – PATHWAY LTS;
RELAY 3 – BUILDING & CANOPY LTS;
RELAY 4 – VESTIBULE & STAIRS,
RELAYS 5 - 8 - SPARE ”.

Add fixture type “WM2” and circuit designation “HG-4 thru LCP2” to (3) lights on north exterior wall of existing building between gridlines 1 and 2.

Revise fixture type “WM1” to read “WM2” at (1) light on north exterior wall of existing building east of gridline 2 and **add** note: “REQUIRED EXTERIOR EMERGENCY LIGHTING - CONTROL WITH LINE VOLTAGE PHOTOCELL”.

Add note at exterior fixtures on circuit INV3-2 (north exit from Aux Gym 061 and entry canopies): “REQUIRED EXTERIOR EMERGENCY LIGHTING - CONTROL WITH LINE VOLTAGE PHOTOCELL”.

Add line voltage photocell on exterior of Custodian 064 for control of exterior fixtures on lighting inverter circuits.

Item #E09 E201A – LEVEL 1 BUILDING 1 – AREA A – LIGHTING PLAN

Add. #02 **Add** to Bubble Note 2: “WITH SEPARATE ON/OFF/RAISE/LOWER CONTROLS FOR ZONES a,b & c”.

Add note to Boys 111: “HOMERUN THRU LCP1-RELAY 14”.

Add note to Girls 112: "HOMERUN THRU LCP1-RELAY 15".

Add note to Corridor 140: "HOMERUN THRU LCP1-RELAY 9".

Add note to Stair A 140A: "NORMAL POWER CKT HG-9, EMERGENCY LTS CKT INV1-1; HOMERUN THRU LCP1-RELAY 8".

Add room designation for space on north side of Gym between gridlines xC and xF: "Stage 143".

Revise location of Bubble Notes 5 and 6 to east wall, south corner of Stage 143. **Add** circuit designation, G1-28,30,32,34,36.

Add note at switch station on east side of Stage 143: "WITH SEPARATE ON/OFF/RAISE/LOWER CONTROLS FOR ZONES a,b & c".

Add note on Stage 143: "HOMERUN LIGHTS THRU LCP1, RELAYS 4 (ZONE a), 5 (ZONE b) & 6 (ZONE c)".

Add note in Gym 145: "HOMERUN LIGHTS THRU LCP1, RELAYS 1 (ZONE a), 2 (ZONE b) & 3 (ZONE c)".

Add circuit designations G1-32,34,36 to Stage Lights TRA.

Add Bubble Note 7 in Gym 145 on north wall outside Storage 145A.

Delete south rows of fixture Type TRB in Gym 145. **Revise** location of north rows of fixture Type TRB south to be located between gridlines xH and xI. **Add** circuit designations G1-28,30.

Add notation at switch station on east side of Music 148: "a,b,c,d"; indicates separate ON/OFF/RAISE/LOWER controls for each zone per Lighting Control Schedule.

Add circuit designation "INV1-3" and note "CONTROL THRU LINE VOLTAGE PHOTOCELL" at exterior canopy fixture Type C4 at south entrance between gridlines x13 and x14.

Add circuit designation "INV1-3" and note "CONTROL THRU LINE VOLTAGE PHOTOCELL" at exterior canopy fixture Type C4 at north entrance between gridlines x21 and x22.

Add circuit designation “HG-4” and note “CONTROL THRU LOW VOLTAGE RELAY PNL LCP1, RELAY 13” at exterior wall mount fixture Type AW4 on north wall between gridlines x21 and x22.

Add circuit designation “INV1-3” and note “CONTROL THRU LINE VOLTAGE PHOTOCELL” at exterior wall mount fixture Type WM1 at east entrance between gridlines xF and xH.

Add circuit designation “HG-4” and note “CONTROL THRU LOW VOLTAGE RELAY PNL LCP1, RELAY 13” at exterior wall mount fixture Type WM1 on east wall between gridlines xB and xC.

Add circuit designation “HG-4” and note “CONTROL THRU LOW VOLTAGE RELAY PNL LCP1, RELAY 13” at exterior wall mount fixture Type AW4 on north wall between gridlines x21 and x22.

Item #E10 E201B – LEVEL 1 BUILDING 1 – AREA B – LIGHTING PLAN

Add. #02 **Add** note to Boys 104: “HOMERUN THRU LCP1-RELAY 16”.

Add note to Girls 105: “HOMERUN THRU LCP1-RELAY 17”.

Add low voltage switch station in Custodian 106 with manual override switches for following zones served by low voltage relay panel - Corridor 140, Stairs, Corridor 240; and for Student Toilet Rooms.

Add note to Corridor 140: “NORMAL POWER CKT HG-9, EMERGENCY LTS CKT INV1-1; HOMERUN THRU LCP1-RELAY 9”.

Item #E11 E202A – LEVEL 2 BUILDING 1 – AREA A – LIGHTING PLAN

Add. #02 **Add** Bubble Note 5 as follows:

“LIGHTING CONTROL PANEL LCP1 – 24 SPACE RELAY PANEL

RELAY 1 – GYM ZONE a (DIMMING);

RELAY 2 – GYM ZONE b (DIMMING);

RELAY 3 – GYM ZONE c (DIMMING);;

RELAY 4 – STAGE ZONE a (DIMMING);

RELAY 5 – STAGE ZONE b (DIMMING);

RELAY 6 – STAGE ZONE c (DIMMING);

RELAY 7 – STAIR E;

RELAY 8 – STAIR A;

RELAY 9 - CORRIDOR 140, STAIR C & D;

RELAY 10 - CORRIDOR 240;

RELAY 11 – DISPLAY CASES 1ST FLOOR;

RELAY 12 – DISPLAY CASES 2ND FLOOR;

RELAY 13 – EXTERIOR BUILDING MOUNTED;
RELAY 14 – BOYS 111;
RELAY 15 – GIRLS 112;
RELAY 16 – BOYS 104;
RELAY 17 – GIRLS 105;
RELAY 18 – BOYS 211;
RELAY 19 – GIRLS 212;
RELAY 20 – BOYS 204;
RELAY 21 – GIRLS 205
RELAY 22-24 - SPARE.”

Add note to Boys 211: “HOMERUN THRU LCP1-RELAY 18”.

Add note to Girls 212: “HOMERUN THRU LCP1-RELAY 19”.

Add Bubble Note 5 to LCP1 in Storage 243.

Add twin head emergency light in Storage 243.

Delete occupancy sensor in Storage 243 and **add** note: “LIGHTS TO HAVE MANUAL CONTROL ONLY FOR SAFETY”.

Item #E12 E202B – LEVEL 2 BUILDING 1 – AREA B – LIGHTING PLAN

Add. #02 **Add** note to Boys 204: “HOMERUN THRU LCP1-RELAY 20”.

Add note to Girls 205: “HOMERUN THRU LCP1-RELAY 21”.

Item #E13 E300A – LEVEL 0 BUILDING 1 – AREA A – POWER & SYSTEMS

Add. #02 **Add** to Bubble Note 1: “PROVIDE POWER & LOW VOLTAGE ROUGH-IN & WIRING FOR SYSTEM PER DETAIL 5/E702 & SHOP DRAWINGS”.

Revise Bubble Note 8 to read: “PROVIDE NEW ELEVATOR SHUNT TRIP MODULE, PROVIDE WIRING FOR INTERTIE OF ELEVATOR & FIRE SUPPRESSION SYSTEMS PER WIRING DIAGRAM 6/E701. MODIFY & EXTEND EXISTING FEEDERS.” Note: Wiring diagram to be included in this addendum per attachment **ADE-004**.

Add new elevator shunt trip module in EMR 001A at location of Bubble Note 8.

Revise Panel ‘EL’ location to south wall in EMR 001A.

Revise volume control to intercom call switch in Office 005.

Add one (1) ceiling mounted intercom speakers in Tlt/Shower 008.

Delete intercom call switches in Cafeteria 012.

Add wireless access point station in center of Cafeteria 012.

Revise north combination intercom/clock to large clock/readerboard display only in Cafeteria 012.

Add eight (8) ceiling mounted common zone intercom speakers in Cafeteria 012, distribute evenly throughout space.

Add intercom call switch in Serving 016A under clock/speaker location.

Add Bubble Note 1 and circuit designation "A-26" in Stair B/Room 040B.

Revise volume control to intercom call switch in Office 041.

Add one (1) ceiling mounted common zone intercom speakers in Corridor 030.

Add dedicated receptacle on circuit DD-4 and duplex telecommunications station for DDC system in Boiler Room 033 (verify location).

Add combination intercom/clock in Work Room 034.

Add wireless access point station in Work Room 034.

Revise MDF 035 per attached **ADE-003**.

Add one (1) ceiling mounted common zone intercom speakers in Corridor 036.

Add one (1) ceiling mounted common zone intercom speakers in Corridor 040.

Add one (1) ceiling mounted intercom speakers in Tlt/Shower 045.

Add two (2) surface mounted common zone intercom speakers on building exterior canopy outside of Cafeteria 012.

Add one (1) surface mounted common zone intercom speakers on building exterior canopy outside of Stair B.

Item #E14 E301A – LEVEL 1 BUILDING 1 – AREA A – POWER & SYSTEMS

Add. #02 **Revise** Bubble Note 18 to read: “EXISTING MOTORIZED BLEACHER TO BE REMOVED & REINSTALLED, PULL OUT EXISTING CONDUCTORS, PROVIDE NEW HOMERUN FROM EXISTING J-BOX IN CENTER OF BLEACHERS AT APPROXIMATELY +36”, ROUTE RACEWAY TOWARDS CENTER OF GYM & UP ADJACENT TO DIVIDER & HOMERUN THRU ACCESSIBLE SPACE ABOVE GYM.”

Add to Bubble Note 19: “PROVIDE FUSED DISCONNECT WITHIN SIGHT OF MOTOR.”

Revise Bubble Note 26 to read: “MOUNT DEVICES IN CASEWORK ISLAND, COREDRILL (1”C – POWER + 1”C – TELECOMMUNICATIONS) THRU FLOOR & HOMERUN THRU CEILING SPACE BELOW. EXISTING CONCRETE FLOOR THICKNESS VARIES FROM 4”-8”, COORDINATE EXACT COREDRILL LOCATION WITH STRUCTURAL, DO NOT CUT EXISTING REINFORCEMENTS.”

Revise Bubble Note 29 to read: “GYM AV CABINET – UNDER BASE BID INSTALL SALVAGED CABINET & RECONNECT EXISTING CABLES; UNDER ALTERNATE BID, INSTALL NEW RACK-G ON CASTERS. UNDER ALTERNATE BID, PULL-OUT EXISTING CABLING & PROVIDE NEW CABLES & OUTLETS.”

Revise receptacle and AV-P station shown at +96” to be flush in ceiling tile in Science Classroom 116.

Add Bubble Note 26 at casework island in Science Classroom 116.

Revise volume control to intercom call switch in Office 128.

Revise volume control to intercom call switch in Office 129.

Revise volume control to intercom call switch in Office 130.

Revise volume control to intercom call switch in Office 131.

Add Large intercom display board on west wall in Office 138.

Add control station for Mat Hoist on west wall in Stage 143.

Add motorized projection screen on Stage 143 opening (see Architectural for exact location), circuit to G1-19; provide power and control wiring to control station in Gym 145.

Add two (2) duplex receptacles on east wall of Stage 143 on circuit G1-4.

Add two (2) duplex receptacles on west wall of Stage 143 on circuit G1-6.

Delete two (2) duplex receptacles on north wall of Stage 143.

Revise location of A/V RACK (RACK-G) from Stage 143 to southwest corner of Gym Storage 145A.

Revise location of duplex receptacle in Storage 143A to east wall, circuit to G1-6.

Add (4) wall mount speakers in Gym 145, locate one north wall west of Stage opening, one on west wall south of divider curtain, one on east wall south of north doors and one on east south of divider curtain. Add note: "BASE BID: INSTALL SALVAGED SPEAKERS & TERMINATE CABLING; ALTERNATE BID: PROVIDE NEW SPEAKERS & CABLING TO NEW A/V RACK".

Add (3) duplex receptacles at existing locations on north wall in face of Stage in Gym 145, circuits G1-8 and G1-10.

Add circuit designation G1-8 at east receptacle on north wall of Gym 145 outside Storage 145A..

Replace (1) microphone outlet at existing location on north wall at east edge of Stage in Gym 145 with new cabling to AV Rack location in Storage Room (provide under base bid and alternate bid).

Add Large intercom display board on north wall at gridline x5 in Gym 145.

Add two (2) wireless access point telecommunications station on east wall at gridline xJ and xN in Gym 145 at +15-ft AFF (verify height).

Add two (2) wireless access point telecommunications station on west wall at gridline xJ and xN in Gym 145 at +15-ft AFF (verify height).

Add 4-plex receptacle on circuit G1-21 in Storage 145A on west wall.

Add duplex telecommunications outlet in Storage 145A on west wall.

Delete intercom call switch in Work Room 147.

Item #E15 E301B – LEVEL 1 BUILDING 1 – AREA B – POWER & SYSTEMS

Add. #02 **Add** dedicated receptacle on circuit H2-42 and duplex telecommunications station for DDC system in Cust 106 (verify location).

Revise volume control to intercom call switch in TSec 125.

Revise volume control to intercom call switch in Office 126.

Revise volume control to intercom call switch in Office 127.

Add two (2) wireless access point stations in Corridor 140, locate on west end near gridline x12 and on east end near gridline x20.

Item #E16 E302A – LEVEL 2 BUILDING 1 – AREA A – POWER & SYSTEMS

Add. #02 **Add** Bubble Note 26 to read: "MOUNT DEVICES IN CASEWORK ISLAND, COREDRILL (1"C – POWER + 1"C – TELECOMMUNICATIONS) THRU FLOOR & HOMERUN THRU CEILING SPACE BELOW. EXISTING CONCRETE FLOOR THICKNESS VARIES FROM 4"-8", COORDINATE EXACT COREDRILL LOCATION WITH STRUCTURAL, DO NOT CUT EXISTING REINFORCEMENTS."

Revise 4-plex receptacle to duplex GFCI at exhaust fans on roof above Upper Stage (near Storage 243).

Revise 4-plex receptacle to duplex GFCI at exhaust fans on roof above Prep 210A.

Revise 4-plex receptacle to duplex GFCI at exhaust fans on roof above Boys 211.

Revise receptacle and AV-P station shown at +96" to be flush in ceiling tile in Science Classroom 216.

Add Bubble Note 26 at casework island in Science Classroom 216.

Revise 4-plex receptacle to duplex GFCI at AHU-3 on roof above Classroom 216, **add** circuit designation M-27.

Add Room Designation "Library 229" at space on north side of Corridor 240 between gridlines x8 and x11.

Add circuit number L1-7 for motorized shades in Library 229.

Add dedicated receptacle on circuit G1-24 and duplex telecommunications station for DDC system in Mech 244 (verify location).

Item #E17 E302B – LEVEL 2 BUILDING 1 – AREA B – POWER & SYSTEMS

Add. #02 **Add** Bubble Note 26 to read: "MOUNT DEVICES IN CASEWORK ISLAND, COREDRILL (1"C – POWER + 1"C – TELECOMMUNICATIONS) THRU FLOOR & HOMERUN THRU CEILING SPACE BELOW. EXISTING CONCRETE FLOOR THICKNESS VARIES FROM 4"-8", COORDINATE EXACT COREDRILL LOCATION WITH STRUCTURAL, DO NOT CUT EXISTING REINFORCEMENTS."

Revise 4-plex receptacle to duplex GFCI in five (5) locations (above Rooms 203A, 203B, 222, 228 and 240).

Revise receptacle and AV-P station shown at +96" to be flush in ceiling tile in Science Classroom 209.

Add Bubble Note 26 at casework island in Science Classroom 209.

Revise volume control to intercom call switch in Office 226.

Revise volume control to intercom call switch in ISS 227.

Add dedicated receptacle on circuit L2-41 and duplex telecommunications station for DDC system in Cust 228 (verify location).

Add two (2) wireless access point stations in Corridor 240, locate on west end near gridline x12 and on east end near gridline x20.

Item #E18 E304 – LEVEL 0 – FEEDER & TUNNEL ELECTRICAL PLAN

Add. #02 **Add** raceway from MDF 035 south across Boiler Room and into flue up to roof in southeast corner for DAS cabling, see E700.

Item #E19 E400 – LEVEL 0 BUILDING 1 – FIRE ALARM & SECURITY PLAN – ENLARGED MDF ROOM 035 PLAN

Add. #02 **Add** Bubble Note 10 to box on west wall south of Telephone and Fiber Demarc.
Revise Bubble Note 16 at box on south side of room west of MSB SECT 2 to read: "11".

Item #E20 E402 – LEVEL 2 BUILDING 1 – FIRE ALARM & SECURITY PLAN

Add. #02 **Add** heat detector within 18" of sprinkler head in Elevator shaft.
Add tamper and flow switch connections to fire sprinkler system valve for Elevator shaft.

Item #E21 E403 – BLDGS 2, 3 & PORTABLE – FIRE ALARM, SECURITY & SYSTEMS PLANS – NOTES

Add. #02 **Add** General Note 2 as follows:
"2. SEE SPEC SECTION 085130 PAR 3.7 FOR DOOR HARDWARE REQUIRED AT DOORS SHOWN ON THIS SHEET. PROVIDE HW SET ADD ALT#5 – 01 UNO."
Add Bubble Note 8 as follows: "PROVIDE HW SET: ADD ALT #5 – 02. SEE SPEC SECTION 087100".
Add Bubble Note 9 as follows: "PROVIDE HW SET: ADD ALT #5 – 02. SEE SPEC SECTION 087100".

Item #E22 E403 – BLDGS 2, 3 & PORTABLE – FIRE ALARM, SECURITY & SYSTEMS PLANS – PORTABLE

Add. #02 **Add** Bubble Note 7 at intrusion alarm key pad.
Add fire alarm pull stations at each door.

Item #E23 E403 – BLDGS 2, 3 & PORTABLE – FIRE ALARM, SECURITY & SYSTEMS PLANS – BLDG 2

Add. #02 **Add** "NOTE – FIRE ALARM SYSTEM IS BIDDER DESIGNED, PROVIDE ADDITIONAL HEAT DETECTORS & SMOKE DETECTORS PER NFPA 72, CHAPTER 17 & AHJ REQUIREMENTS".

Add Bubble Note 9 at exterior door in Hall C-04.

Item #E24 E403 – BLDGS 2, 3 & PORTABLE – FIRE ALARM, SECURITY & SYSTEMS PLANS – BLDG 3

Add. #02 **Add** "NOTE – FIRE ALARM SYSTEM IS BIDDER DESIGNED, PROVIDE ADDITIONAL HEAT DETECTORS & SMOKE DETECTORS PER NFPA 72, CHAPTER 17 & AHJ REQUIREMENTS".

Add Bubble Note 8 at double exterior doors on north end of Hall D-04.

Add Bubble Note 8 at double exterior doors on south end of Hall D-04.

Item #E25 E500 – ELECTRICAL DISTRIBUTION

Add. #02 **Revise** per attached sheet **E500**.

Item #E26 E501 – PANEL SCHEDULES

Add. #02 Panel MDS: **Revise** AIC Assembly to “X 100K FUSED SWITCH”.

Panel HAG: **Revise** 75A/3P on circuits 25,27,29 to 70A/3P.

Panel HA: **Revise** AIC Assembly to “X 35K”.

Panel HC: **Revise** AIC Assembly to “X 35K”.

Panel HG: **Revise** 175/3P on circuits 37,39,41 to a sub-feed 175/3P circuit breaker.

Panel HK: **Revise** AIC Assembly to “X 35K”.

Item #E27 E502 – PANEL SCHEDULES

Add. #02 Panel A: **Revise** circuit 26 description to read: “DOOR HARDWARE POWER SUPPLY”; load: “200VA”.

Panel D: **Revise** AIC Assembly to “X 18K”.

Panel DD: **Revise** AIC Assembly to “X 18K”.

Item #E28 E503 – PANEL SCHEDULES

Add. #02 Panel G1: **Revise** circuit 4 description to read: “RECEP – STAGE EAST”; load: “360VA”.

Panel G1: **Revise** circuit 4 description to read: “RECEP – STAGE WEST & STORAGE”; load: “540VA”.

Panel G1: **Revise** circuit 8 description to read: “RECEP – GYM N”; load: “360VA”.

Panel G1: **Revise** circuit 10 description to read: “RECEP – GYM N”; load: “360VA”.

Panel G1: **Revise** circuit 21 description to read: “RECEP – GYM STORAGE 145A”; load: “360VA”.

Panel H2: **Revise** circuit 42 description to read: “DDC POWER”; load: “200VA”.

Item #E29 E504 – PANEL SCHEDULES

Add. #02 Panel L2: **Revise** circuit 39 description to read: "PENTHOUSE LT & RECEP"; load: "200VA".

Panel L2: **Revise** circuit 41 description to read: "DDC POWER"; load: "200VA".

Item #E30 E600 – LIGHT FIXTURE SCHEDULE

Add. #02 **Add** to Fixture Type A4 Description: "4" ROUND POLE, GRAPHITE FINISH".

Add to Fixture Type A4T Description: "4" ROUND POLE, GRAPHITE FINISH".

Add to Fixture Type A3T Description: "4" ROUND POLE, GRAPHITE FINISH".

Add to Fixture Type AW4 Description: "GRAPHITE FINISH".

Add to Fixture Type C4 Description: "GRAPHITE FINISH".

Add to Fixture Type HB1 Description: "WITH WIREGUARD"; add to Remarks: "SUSPEND FIXTURE APPROXIMATELY 42" BELOW FINISHED CEILING. PROVIDE SEISMIC BRACING - GRIPLOCK LIGHTING SEISMIC BRACING CROSS-CABLE SYSTEM OR EQUAL".

Add to Fixture Type HB2 Description: "WITH WIREGUARD"; add to Remarks: "SUSPEND FIXTURE APPROXIMATELY 18" BELOW FINISHED CEILING WITH SUPPORT TO STRUCTURE, DISTANCE TO STRUCTURE VARIES FROM 9 TO 4-FT (VERIFY DISTANCE). PROVIDE SEISMIC BRACING - GRIPLOCK LIGHTING SEISMIC BRACING CROSS-CABLE SYSTEM OR EQUAL".

Add to Fixture Type R1 Manufacturer Column: "HALO SMD6"; **Revise** Voltage Column to read: "UNV".

Add Type WM2 as follows:

"WM2: VANDAL RESISTANT LED WALL PACK WITH SURFACE MOUNTING BOX, SQUARE HOUSING WITH EYELID, OPAL LENS, LIFETIME WARRANTY ON HOUSING, GREY FINISH.

LUMENS: 3340.

MANUFACTURER: LUMINAIRE SWP1212-YWP.

LAMP: LED, 3000K.

VA/W: 44VA / 40W.

VOLTAGE: MVOLT."

Item #E31 E601 – LIGHTING AND RECEPTACLE CONTROL SCHEDULE

Add. #02 **Add RAISE/LOWER to Locker Room Requirements.**

Item #E32 E701 – ELECTRICAL DETAILS

Add. #02 **Add Detail 6 – Elevator Power Riser Diagram, per attachment ADE-004.**

Contractor Questions:

1. (Previous Addendum #01 Contractor Question 6): Please clarify if there are 2 allowances or 5 allowances, and if 5, provide quantities to include for allowances 3 thru 5. Please advise if allowances are going to be added to the Bid Form.
Correction to response in Addendum #01: There are (5) Unit Prices listed on the Bid Form. No allowances will be included in the Contract.
2. Please clarify demo scope for new penetrations through existing walls and slabs.
Refer to the General Notes located on the Demo sheets. Demo scope should be coordinated with all trades to provide complete working systems and finished scope of work. See Civil, Structural, Mechanical, Plumbing and Electrical drawings for additional demolition scope.
3. Can you clarify the quantities to be used for the allowances per 012400-1.5?
No allowances will be included in the Contract. See question 1 above.

Attachments:

Project Manual

Pre-bid Site Walk Attendance Sheet
Section 012400 – Unit Prices

Drawings

ADA-013 and ADA-014
ADM-003 thru ADM-005
ED001ELECTRICAL SITE DEMOLITION PLAN
E100 ELECTRICAL SITE PLAN
E500 ELECTRICAL DISTRIBUTION
ADE-002 thru ADE-004

END OF ADDENDUM #02

Huntington Middle School
Pre-Bid Walk ~~06.23.2021~~

PART 1 GENERAL

1.1 SUMMARY

- A. Section Includes:
 - 1. Administrative and procedural requirements
 - 2. Unit Price Adjustments to Contract Sum
 - 3. Unit Price Schedule
- B. Related Requirements:
 - 1. Section 012600 - Contract Modification Procedures

1.2 ADMINISTRATIVE AND PROCEDURAL REQUIREMENTS

- A. Unit Prices establish means for adjusting Contract Sum by Change Order in accordance with Conditions of the Contract, based upon Unit Costs per Unit of Measure for each Unit Price Item.
- B. State dollar amount to establish Unit Price for each Unit Price Item in space provided on Bid Proposal Form. Failure to include all scheduled unit prices is grounds for rejecting bid.
- C. State dollar amount to cover complete work for each Unit Price Item.
- D. Take measurements and compute quantities for Unit Price Items as Work proceeds. Maintain log for Owner review. When requested by Owner, provide equipment, and personnel necessary to assist in field verification of measurements and quantities.
- E. Adjust Contract Sum by Change Order for Unit Prices in accordance to provision of Contract Documents.

1.3 UNIT PRICE ADJUSTMENTS TO CONTRACT SUM

- A. Make written request to Owner to adjust Contract Sum through Contract modification procedures required by Conditions of the Contract for Unit Price work.
- B. Where actual Unit Price work is determined to have increased or decreased in excess of 50 percent from Estimated Quantity for Unit Price work, Owner or Contractor may make written request to adjust Contract Sum.
- C. Submit complete quantity breakdown made on basis of actual measurement and quantity, accepted by Owner and Architect, multiplied by Unit Price in Unit of Measure stated by Bidder on Form of Proposal.
- D. Owner reserves right to reject Contractor's measurement or quantity take-off for in-place work and to verify quantity or measure by independent surveyor or inspector, acceptable to Contractor.
- E. Adjustment to Contract Sum will be determined by Unit Price work actually incorporated into or deleted from estimated quantity of work, as established and verified by Owner.

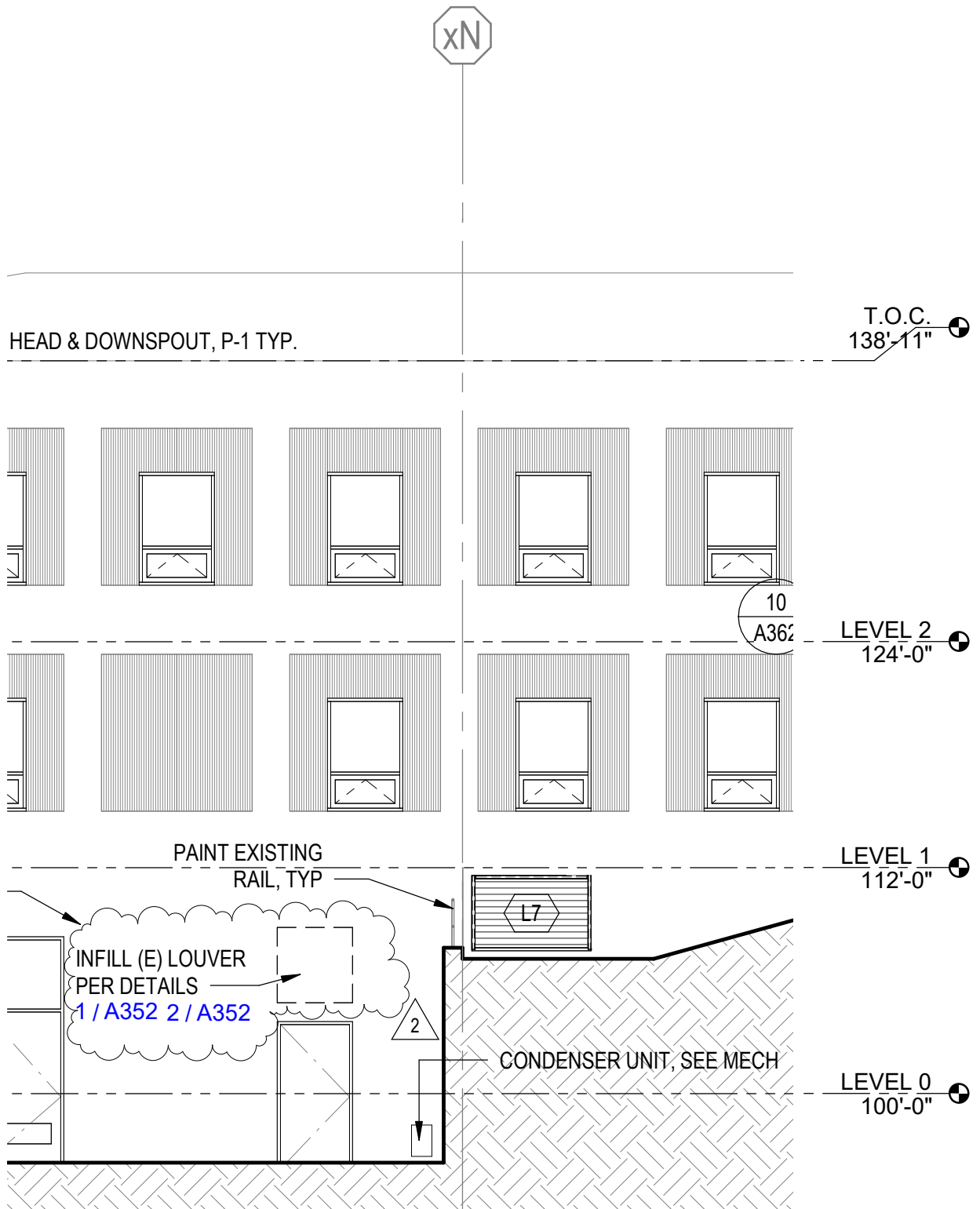
1.4 UNIT PRICE SCHEDULE

- A. For Unit Prices UP-1 and UP-2: Excavation, material handling, and disposal of soil required to establish the planned subgrade elevations shall be included in the base scope of work and is not compensable as a Unit Price. Excavation below planned subgrades and backfilling of approved over-excavation areas will be tracked by the Geotechnical Engineer and stated in the Geotech site reports. Contractor shall review with Geotechnical Engineer all material quantities at the time the materials are handled, and quantities stated in the Geotechnical Engineer's site reports shall be presumed to be accurate and correct if so stated without objection by the Contractor.
- B. All extra work pertaining to UP-1 and UP-2 must have a geotechnical engineer present to verify the scope of the condition. At the end of each day the quantities of each Unit Price will be verified by the contractor and geotechnical engineer and reported in the daily geotechnical site reports.
- C. Unit Price No. UP-1 – Over Excavation and Export of Unanticipated Unsuitable Materials, as determined by the Geotechnical Engineer:
 - 1. Description: The Unit price shall be applied to unanticipated unsuitable materials, as determined by the Owner's testing agency or Geotechnical Engineer, encountered below anticipated subgrade elevation. Unanticipated unsuitable material is the material (soil and other deleterious material) below the base bid subgrade elevation that does not meet the bearing capacity requirements as defined by the Contract Documents and Owner's testing agency or Geotechnical Engineer or include deleterious material such as wood, brick, concrete, or other building material. Unit price will include all labor, materials, and equipment (including sales tax) necessary for excavating the unsuitable soils, dewatering, street cleaning, traffic control (including flaggers), removal and legal disposal off site, documentation of the quantity removed, and all other incidental work necessary to complete this particular work item.
 - 2. Verification that scope is beyond base scope needs to be made by the Geotechnical Engineer prior to work.
 - 3. Unit of Measurement: Cubic Yard (CY) of soils excavated, trucked and legally dumped off site, measured from its original compacted and in-place location ("Bank yards"). Measurement by truck ticket will not be accepted.
- D. Unit Price No. UP-2– Import and Placement of Over Excavation Fill:
 - 1. Description: Fill may be Foundation Ballast, Crushed surfacing top course, or Structural fill as defined in Section 312200 as required in addition to that required beyond level of excavation and fill indicated in contract documents. Unit price will include all labor, materials, and equipment necessary for hauling, dewatering, street cleaning, traffic control (including flaggers), placing, compacting, documentation of the quantity placed, and all other incidental work necessary to complete this particular work item.
 - 2. Verification that scope is beyond base scope needs to be made by the Geotechnical Engineer prior to work.
 - 3. Unit of Measurement: Cubic Yard (CY) in final place of fill imported, placed and compacted ("Bank yards") as measured by on site Geotechnical inspector.
- E. Unit Price No. UP-3 - Removal and Disposal of Asbestos-containing 9x9 and 12x12 Vinyl Tile.
- F. Unit Price No. UP-4 - Removal and Disposal of Asbestos-containing Vinyl Sheeting.
- G. Unit Price No. UP-5 - Removal and Disposal of Asbestos-containing 1, 2, 4, 6, and 8-inch Thermal System Pipe Insulation (TSI).

PART 2 PRODUCTS - NOT USED

PART 3 EXECUTION - NOT USED

END OF SECTION



2 EAST ELEVATION - BUILDING 1

SCALE: 1/8"=1'-0"

REF. SHEET

A203

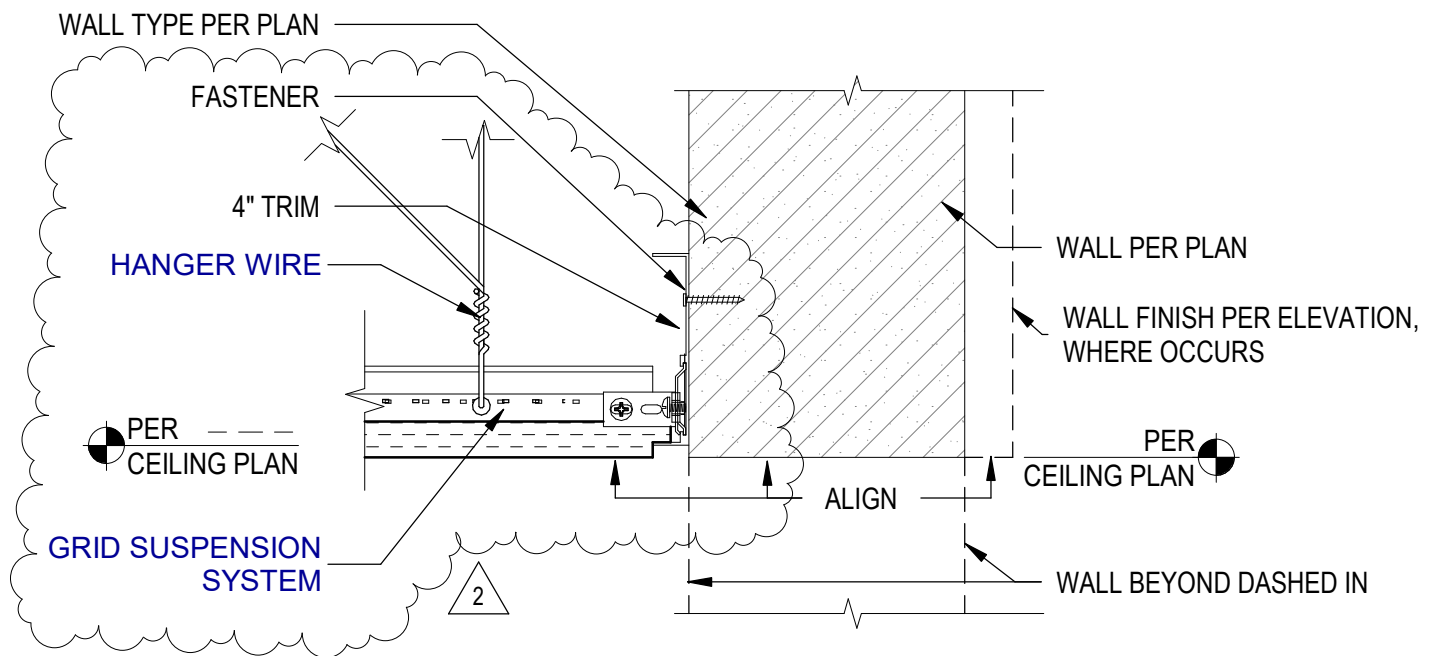
integrus
ARCHITECTURE

117 S.Main Street, Suite 100 Seattle, WA. 98104
(206) 628 - 3137 Fax: (206) 628-3138

KELSO SCHOOL DISTRICT NO. 458
**HUNTINGTON MIDDLE SCHOOL -
MODERNIZATION AND ADDITION**
500 REDPATH ST, KELSO, WA 98626

Addendum Drawing

DWG. #: **ADA-013**
JOB #: 21938
DRAWN BY: EP
DATE: 07/02/21
REF. DOC.: ADDENDUM 02



14 ACT AT CMU EDGE

SCALE: 3"=1'-0"

REF. SHEET

A481

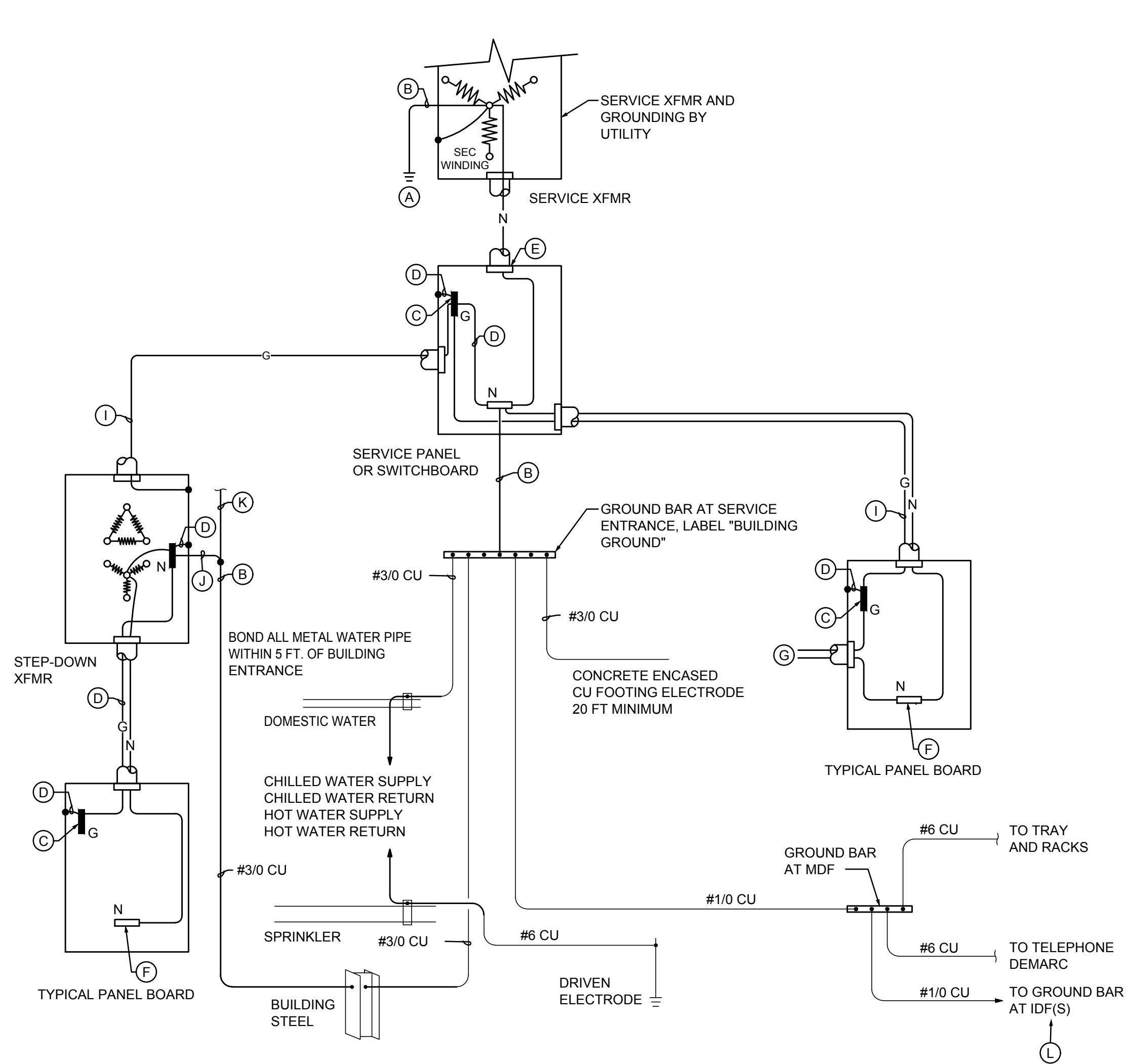
integrus
ARCHITECTURE

117 S.Main Street, Suite 100 Seattle, WA. 98104
(206) 628 - 3137 Fax: (206) 628-3138

KELSO SCHOOL DISTRICT NO. 458
**HUNTINGTON MIDDLE SCHOOL -
MODERNIZATION AND ADDITION**
500 REDPATH ST, KELSO, WA 98626

Addendum Drawing

DWG. #: **ADA-014**
JOB #: 21938
DRAWN BY: EP
DATE: 07/02/21
REF. DOC.: ADDENDUM 02

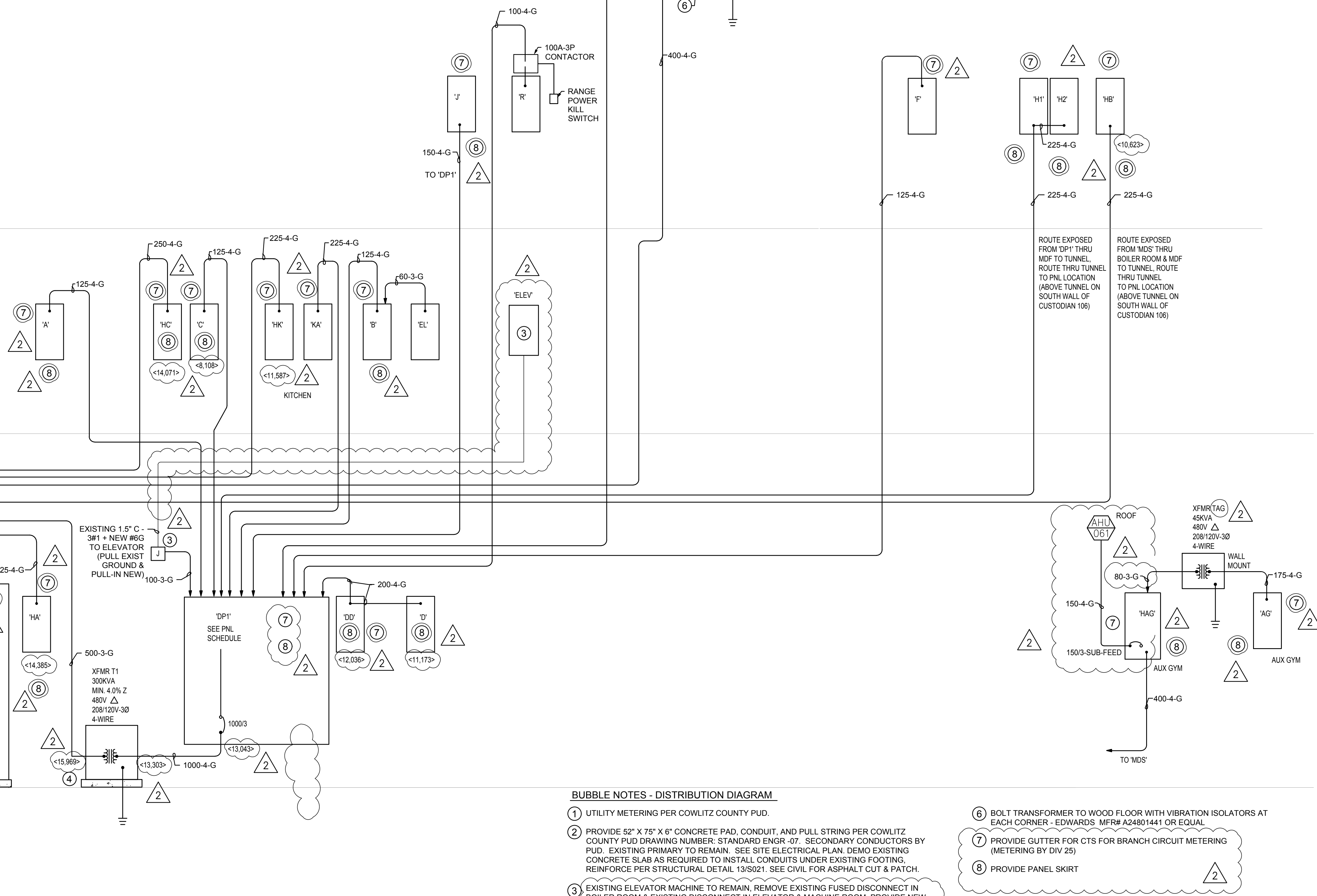
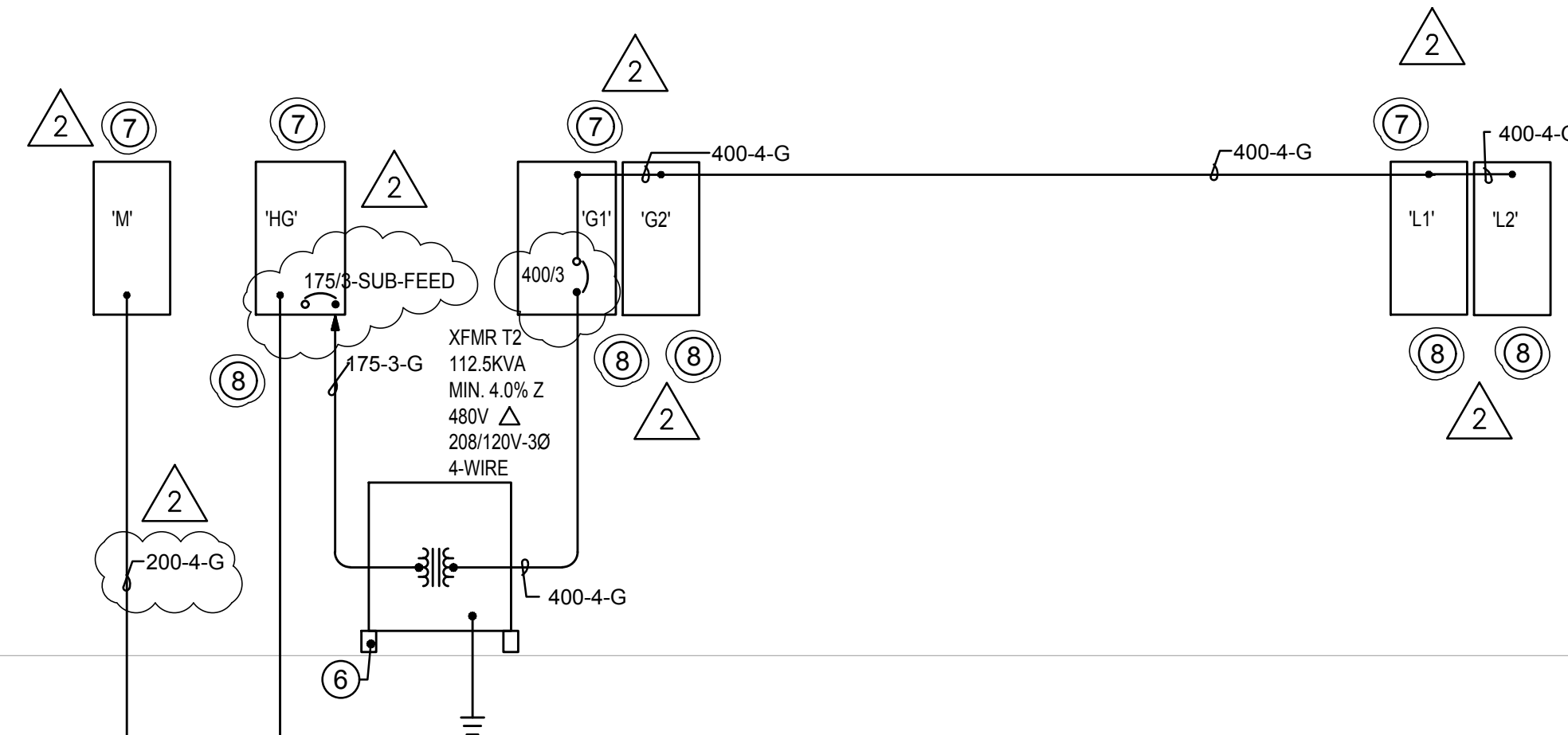


GROUNDING DIAGRAM

BUBBLE NOTES - GROUNDING DIAGRAM

- (A) DRIVEN ELECTRODE SYSTEM
- (B) GROUNDING ELECTRODE CONDUCTOR
- (C) EQUIPMENT GROUNDING BUS
- (D) BONDING JUMPER. SIZE PER NEC TABLE 250.102 (C) (1)
- (E) GROUNDING LOCKNUT
- (F) INSULATED NEUTRAL BUS
- (G) LIGHTING, RECEPTACLE, MOTOR, & EQUIPMENT CIRCUITS (INCLUDE EQUIPMENT GROUND CONDUCTOR)
- (H) NOT USED
- (I) EQUIPMENT GROUND CONDUCTOR
- (J) GROUNDING ELECTRODE CONDUCTOR FOR SEPARATELY DERIVED SYSTEMS MAY BE INSTALLED AT FIRST DISCONNECTING MEANS (PANELBOARD, SWITCH, ENCLOSED CIRCUIT BREAKER) SUBJECT TO COMPLIANCE WITH ALL NEC 250.30 REQUIREMENTS.
- (K) COMMON GROUNDING ELECTRODE CONDUCTOR FOR SEPARATELY DERIVED SYSTEMS
- (L) BOND TRAY AND RACKS TO GROUND BAR WITH #6 CU.

FEEDER SCHEDULE - CU CONDUCTORS		
CALLOUT X-Y-Z		REMARKS
X = NOMINAL CIRCUIT AMPACITY EG. 225 = 225 AMPERES		
Y = CONFIGURATION CODE 1N = 1W + NEUT 1 = 1PH 2W 2 = 1PH 3W 3 = 3PH 3W 4 = 3PH 4W		
Z = INDICATES IF GROUND CONDUCTORS ARE INCLUDED G = EQUIPMENT GROUND IG = ISOLATED GROUND		
CALLOUT	DESCRIPTION	REMARKS
60-3-G	1" 3#6 + #10 GND	
60-4-G	1 1/2" 3#6 + #10 GND	
80-3-G	1 1/4" 3#6 + #8 GND	
100-3-G	1 1/4" 3#6 + #8 GND	
100-4-G	1 1/2" 3#6 + #8 GND	
110-4-G	1 1/2" 3#6 + #8 GND	
125-3-G	1 1/2" 3#6 + #8 GND	
125-4-G	1 1/2" 3#6 + #8 GND	
150-3-G	2" 3#10 + #8 GND	
150-4-G	2" 3#10 + #8 GND	
175-3-G	2" 3#10 + #8 GND	
175-4-G	2" 3#10 + #8 GND	
200-3-G	2" 3#10 + #8 GND	
200-4-G	2" 3#10 + #8 GND	
225-3-G	2" 3#10 + #8 GND	
225-4-G	2 1/2" 3#10 + #8 GND	
250-3-G	2 1/2" 3#10 + #8 GND	
250-4-G	2 1/2" 3#10 + #8 GND	
275-4-G	3" 3#10 + #8 GND	
300-4-G	3" 3#10 + #8 GND	
350-3-G	3" 3#10 + #8 GND	
400-4-G	(2) 2" 3#10 + #8 GND IN PARALLEL	
500-3-G	(2) 2 1/2" 3#10 + #8 GND IN PARALLEL	
600-4-G	(2) 3" 3#10 + #8 GND IN PARALLEL	
700-3-G	(3) 2 1/2" 3#10 + #8 GND IN PARALLEL	
700-4-G	(3) 2 1/2" 3#10 + #8 GND IN PARALLEL	
1000-4-G	(3) 3" 3#10 + #8 GND IN PARALLEL	
1600-4-G	(5) 3 1/2" 3#10 + #8 GND IN PARALLEL	
2000-4-G	(5) 3 1/2" 3#10 + #8 GND IN PARALLEL	



DISTRIBUTION DIAGRAM

INDICATES CALCULATED AVAILABLE FAULT CURRENT, AIC RATING OF PANELS SHALL BE BASED ON COORDINATION STUDY

BUBBLE NOTES - DISTRIBUTION DIAGRAM

- (1) UTILITY METERING PER COWLITZ COUNTY PUD.
- (2) PROVIDE 62" X 75" X 6" CONCRETE PAD, CONDUIT, AND PULL STRING PER COWLITZ COUNTY PUD DRAWING NUMBER: STANDARD ENGR -07. SECONDARY CONDUCTORS BY PUD. EXISTING PRIMARY TO REMAIN. SEE SITE ELECTRICAL PLAN. DEMO EXISTING CONCRETE SLAB AS REQUIRED TO INSTALL CONDUITS UNDER EXISTING FOOTING. REINFORCE PER STRUCTURAL DETAIL 13/5021. SEE CIVIL FOR ASPHALT CUT & PATCH.
- (3) EXISTING ELEVATOR MACHINE TO REMAIN. REMOVE EXISTING FUSED DISCONNECT IN BOILER ROOM & EXISTING DISCONNECT IN ELEVATOR & MACHINE ROOM. PROVIDE NEW ELEVATOR MODULE WITH SHUNT TRIP & CONNECT FEEDER TO EXISTING ELEVATOR MACHINE. INTERTIE TO FIRE PROTECTION SYSTEM. SEE DETAIL 6/E701. MODIFY & EXTEND RACEWAY AS REQUIRED. INTERCEPT EXISTING FEEDER IN BOILER ROOM AT CEILING. PROVIDE PULL BOX & EXTEND FEEDER TO NEW PANEL 'DP1'.
- (4) PROVIDE REINFORCED CONCRETE HOUSEKEEPING PAD, PROVIDE VIBRATION ISOLATION AT TRANSFORMER
- (5) UNDER DEDUCTIVE ALT BID NO 13 - NO AIR CONDITIONING SYSTEM - PROVIDE 1600A FUSES. DELETE FEEDER FOR CHILLER & PROVIDE 1600-4-G FEEDER TO MDS SECT 3
- (6) BOLT TRANSFORMER TO WOOD FLOOR WITH VIBRATION ISOLATORS AT EACH CORNER - EDWARDS MFR# A24801441 OR EQUAL
- (7) PROVIDE GUTTER FOR CTS FOR BRANCH CIRCUIT METERING (METERING BY DIV 25)
- (8) PROVIDE PANEL SKIRT

KELSO SCHOOL DISTRICT NO. 453 HUNTINGTON MIDDLE SCHOOL - MODERNIZATION AND ADDITION

500 REDPATH ST, KELSO, WA 98626

Date: 05.28.2021
Job No.: 21938.00
Drawn By: SJH/BN
Checked by: SJH/CTU

#	Date	Description
2	07/02/21	ADDENDUM 02

ELECTRICAL DISTRIBUTION

E500

CONSTRUCTION SET

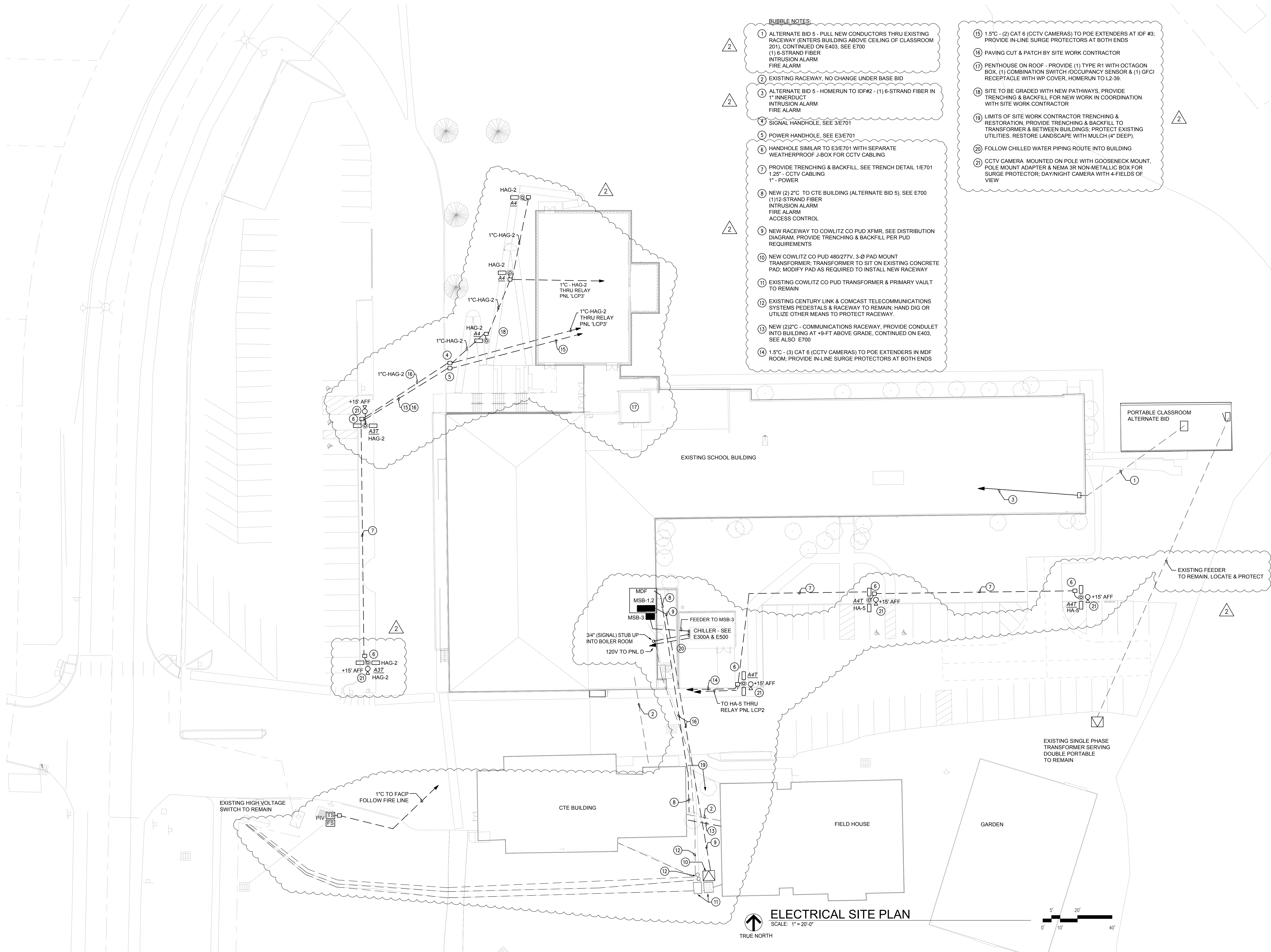


A horizontal line representing a DNA molecule with a scale from 0' to 40'. Above the line, the number 5' is at the 5' position and 20' is at the 20' position. A solid black bar is drawn below the line, starting at the 10' mark and ending at the 20' mark.

**KELSO SCHOOL DISTRICT NO. 453
HUNTINGTON MIDDLE SCHOOL -
MODERNIZATION AND ADDITION**
500 REDPATH ST, KELSO, WA 98626

Revisions		
#	Date	Description
2	07/02/21	ADDENDUM 02

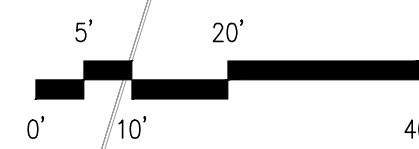
ED001



ELECTRICAL SITE PLAN

SCALE: 1" = 20'-0"

TRUE NORTH



BUBBLE NOTES:

- 1 ALTERNATE BID 5 - PULL NEW CONDUCTORS THRU EXISTING RACEWAY (ENTERS BUILDING ABOVE CEILING OF CLASSROOM 201), CONTINUED ON E403, SEE E700
(1) 6-STRAND FIBER
INTRUSION ALARM
FIRE ALARM
- 2 EXISTING RACEWAY, NO CHANGE UNDER BASE BID
- 3 ALTERNATE BID 5 - HOMERUN TO IDF#2 - (1) 6-STRAND FIBER IN 1" INNERDUCT
INTRUSION ALARM
FIRE ALARM
- 4 SIGNAL HANDHOLE, SEE E3/E701
- 5 POWER HANDHOLE, SEE E3/E701
- 6 HANDHOLE SIMILAR TO E3/E701 WITH SEPARATE WEATHERPROOF J-BOX FOR CCTV CABLING
- 7 PROVIDE TRENCHING & BACKFILL, SEE TRENCH DETAIL 1/E701
1.25" - CCTV CABLING
1" - POWER
- 8 NEW (2) 2" C TO CTE BUILDING (ALTERNATE BID 5), SEE E700
(1) 1/2-STRAND FIBER
INTRUSION ALARM
FIRE ALARM
ACCESS CONTROL
- 9 NEW RACEWAY TO COWLITZ CO PUD XFMR, SEE DISTRIBUTION DIAGRAM, PROVIDE TRENCHING & BACKFILL PER PUD REQUIREMENTS
- 10 NEW COWLITZ CO PUD 480/277V, 3-Ø PAD MOUNT TRANSFORMER, TRANSFORMER TO SIT ON EXISTING CONCRETE PAD, MODIFY PAD AS REQUIRED TO INSTALL NEW RACEWAY
- 11 EXISTING COWLITZ CO PUD TRANSFORMER & PRIMARY VAULT TO REMAIN
- 12 EXISTING CENTURY LINK & COMCAST TELECOMMUNICATIONS SYSTEMS PEDESTALS & RACEWAY TO REMAIN; HAND DIG OR UTILIZE OTHER MEANS TO PROTECT RACEWAY.
- 13 NEW (2) 2" C - COMMUNICATIONS RACEWAY, PROVIDE CONDULET INTO BUILDING AT +9-FT ABOVE GRADE, CONTINUED ON E403, SEE ALSO E700
- 14 1.5" C - (3) CAT 6 (CCTV CAMERAS) TO POE EXTENDERS IN MDF ROOM, PROVIDE IN-LINE SURGE PROTECTORS AT BOTH ENDS

- 15 1.5" C - (2) CAT 6 (CCTV CAMERAS) TO POE EXTENDERS AT IDF #3; PROVIDE IN-LINE SURGE PROTECTORS AT BOTH ENDS
- 16 PAVING CUT & PATCH BY SITE WORK CONTRACTOR
- 17 PENTHOUSE ON ROOF - PROVIDE (1) TYPE R1 WITH OCTAGON BOX, (1) COMBINATION SWITCH/OCCUPANCY SENSOR & (1) GFCI RECEPTACLE WITH WP COVER, HOMERUN TO L2-39.
- 18 SITE TO BE GRADED WITH NEW PATHWAYS, PROVIDE TRENCHING & BACKFILL FOR NEW WORK IN COORDINATION WITH SITE WORK CONTRACTOR
- 19 LIMITS OF SITE WORK CONTRACTOR TRENCHING & RESTORATION, PROVIDE TRENCHING & BACKFILL TO TRANSFORMER & BETWEEN BUILDINGS; PROTECT EXISTING UTILITIES, RESTORE LANDSCAPE WITH MULCH (4" DEEP).
- 20 FOLLOW CHILLED WATER PIPING ROUTE INTO BUILDING
- 21 CCTV CAMERA MOUNTED ON POLE WITH GOOSENECK MOUNT, POLE MOUNT ADAPTER & NEMA 3R NON-METALLIC BOX FOR SURGE PROTECTOR; DAY/NIGHT CAMERA WITH 4-FIELDS OF VIEW

KELSO SCHOOL DISTRICT NO. 453
HUNTINGTON MIDDLE SCHOOL -
MODERNIZATION AND ADDITION

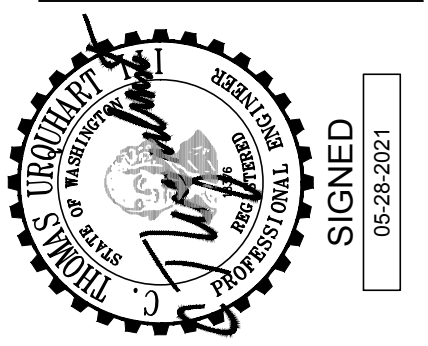
500 REDPATH ST, KELSO, WA 98626

Date: 05.28.2021
Job No.: 21938.00
Drawn By: SJH/BN
Checked by: SJH/CTU

Revisions		
#	Date	Description
2	07/02/21	ADDENDUM 02

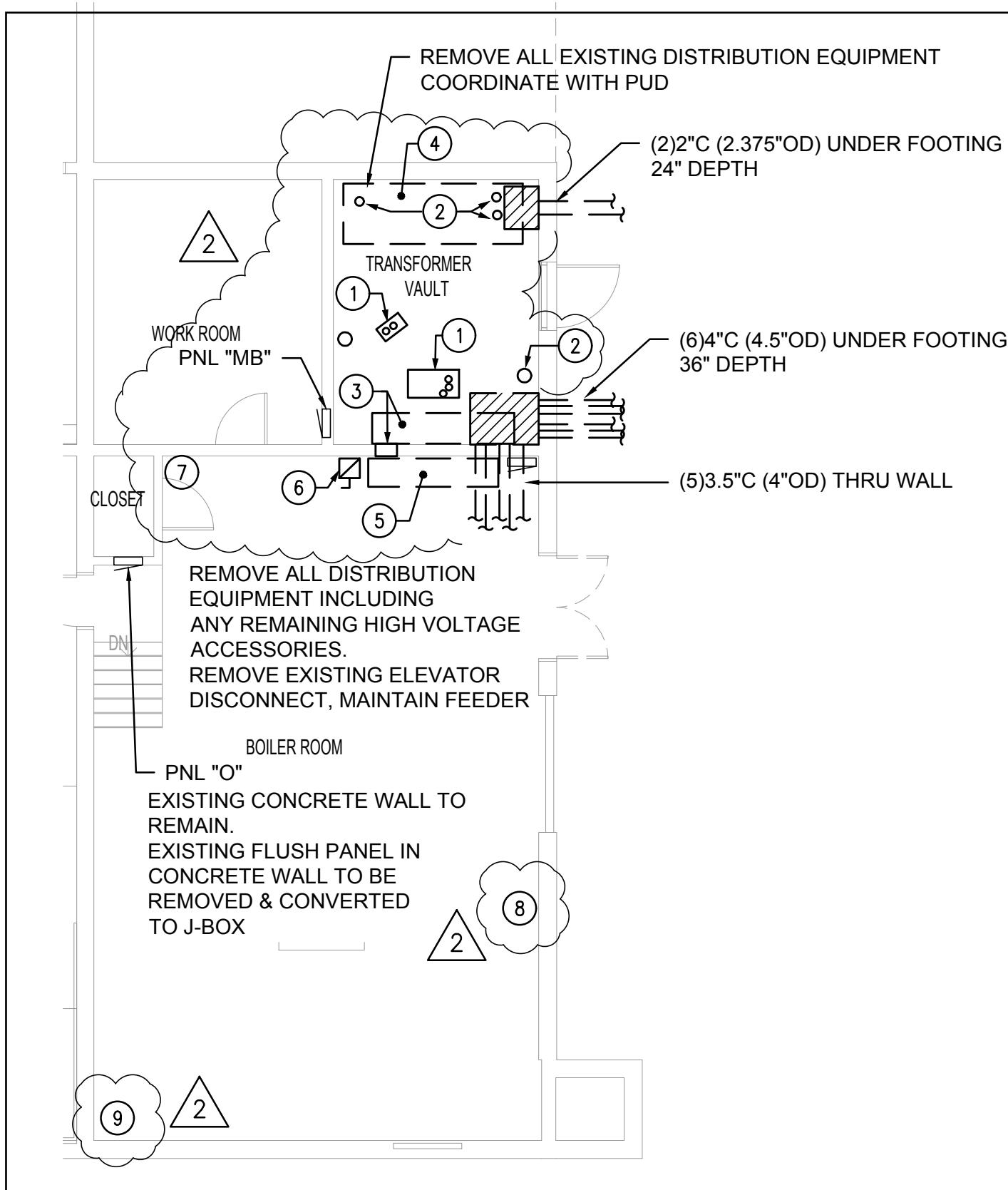
ELECTRICAL SITE
PLAN

E100

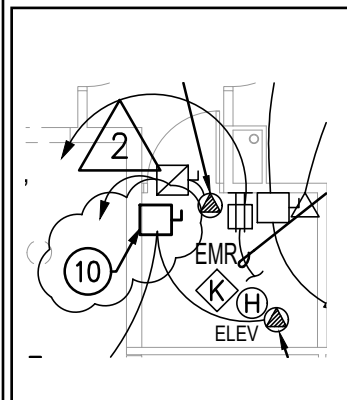


HULTZ & BHU
engineers inc
1111 Fremont Ave Suite 100 Tacoma, WA 98402
Phone: (253) 383-3257 Fax: (253) 383-3253
general@hultzbhu.com Job Number: 20-038

integrus
ARCHITECTURE
117 SOUTH MAIN STREET, SUITE 105, SEATTLE, WA 98104
TELEPHONE: (206) 462-3157 FAX: (206) 462-3158



1 TRANSFORMER VAULT & BOILER ROOM
ELECTRICAL DEMOLITION PLAN
SCALE: 2' 10'
0' 5' 20'



2 ELEVATOR MACHINE ROOM
ELECTRICAL DEMOLITION PLAN
SCALE: 2' 10'
0' 5' 20'

ELECTRICAL DEMOLITION NOTES:

REMOVE ALL EXISTING ELECTRICAL DISTRIBUTION EQUIPMENT WITHIN MAIN BUILDING EXCEPT EQUIPMENT IN THE ELEVATOR, ELEVATOR PIT & ELEVATOR MACHINE ROOM UNLESS OTHERWISE NOTED. NOT ALL ELEMENTS ARE SHOWN.

REMOVE ALL LIGHT FIXTURES, WIRING DEVICES, CONDUCTORS, LOW VOLTAGE SYSTEMS & EXPOSED RACEWAY WITHIN MAIN BUILDING; INCLUDING LOW VOLTAGE SYSTEMS SERVING THE ELEVATOR. EXISTING RACEWAY MAY BE UTILIZED IN UNFINISHED SPACES, REVIEW EXISTING CONDITIONS & REQUIREMENTS FOR NEW CONSTRUCTION WITH ARCHITECT/ENGINEER PRIOR TO DEMOLITION TO IDENTIFY EXISTING RACEWAY TO BE REUSED.

WITHIN CTE, FIELD HOUSE & DOUBLE CLASSROOM PORTABLE, REMOVE FIRE ALARM, INTERCOM/CLOCK, ACCESS CONTROL & INTRUSION ALARM DEVICES.

PULL OUT SIGNAL BACKBONE CABLING SERVING CTE, FIELD HOUSE & DOUBLE CLASSROOM PORTABLE. MAINTAIN TERMINATION DEVICES.

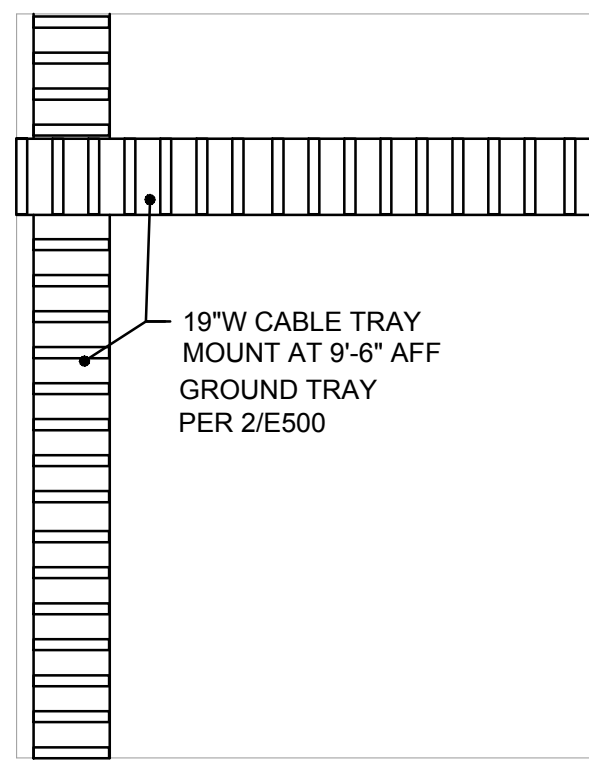
MAINTAIN CONDUITS TO CTE, FIELD HOUSE, FIELD & DOUBLE CLASSROOM PORTABLE.

COORDINATE WITH UTILITIES TO PROTECT & MODIFY EXISTING DISTRICT-WIDE FIBER SERVICE, TELEPHONE SERVICE & POWER SERVICE.

BUBBLE NOTES:

- 1 EXISTING PUD EQUIPMENT TO BE REMOVED, COORDINATE WITH PUD FOR REMOVAL OF ENCLOSURE & CONDUCTORS TO EXISTING TRANSFORMER, REMOVE REMAINING CONDUCTORS. CUT CONDUITS BELOW FLOOR LEVEL & PATCH CONCRETE.
- 2 REMOVE EXISTING CONDUITS; PULL OUT CONDUCTORS, CUT CONDUITS BELOW FLOOR LEVEL & PATCH CONCRETE.
- 3 REMOVE EXISTING GUTTER & CONDUCTORS; PATCH CONCRETE WALL.
- 4 REMOVE EXISTING ABANDONED SWITCHGEAR
- 5 REMOVE EXISTING MAIN SWITCHBOARD
- 6 REMOVE EXISTING ELEVATOR DISCONNECT, MAINTAIN FEEDER TO ELEVATOR MACHINE ROOM, SEE E500.
- 7 PROTECT EXISTING TELECOMMUNICATIONS EQUIPMENT, COORDINATE WITH UTILITY & OWNER TO EXTEND CABLING TO NEW MDF LOCATION.
- 8 PROTECT EXISTING FIBER, COORDINATE WITH OWNER & UTILITY TO EXTEND CABLING TO NEW MDF LOCATION.
- 9 EXISTING SIGNAL CONDUITS TO CTE BUILDING
- 10 REMOVE EXISTING ELEVATOR DISCONNECT, MAINTAIN FEEDERS TO BOILER ROOM & ELEVATOR MACHINE.

2



1 CABLE TRAY PLAN

SCALE: 1/4" = 1'-0"



TRUE NORTH

ENLARGED MDF ROOM 035

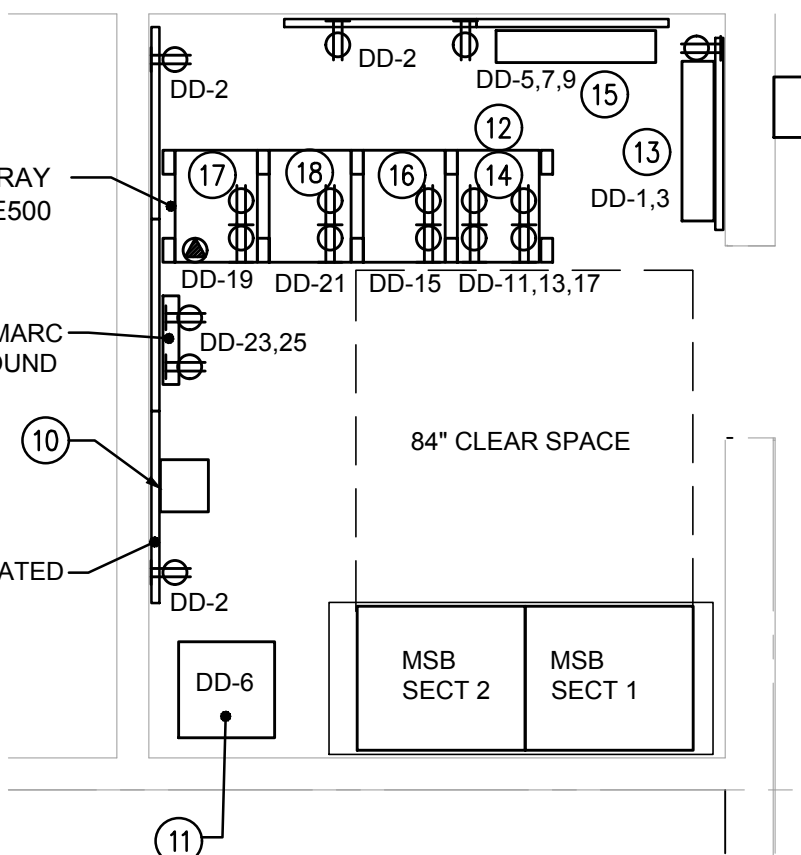
SCALE: 1/4" = 1'-0"

EXACT ROOM LAYOUT TO BE CONFIRMED AFTER APPROVAL OF
MSB SECTION 1 & MSB SECTION 2 TO ENSURE 84" OF REQUIRED
CLEAR SPACE IS MAINTAINED IN FRONT OF EQUIPMENT

GROUND TRAY
PER 2/E500

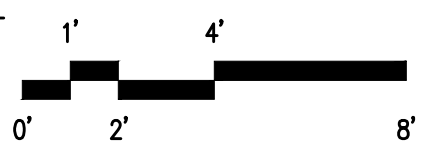
NEW TELEPHONE & FIBER DEMARC
PROVIDE GROUND BAR & GROUND
PER 2/E500

4X8 FIRE TREATED
PLYWOOD



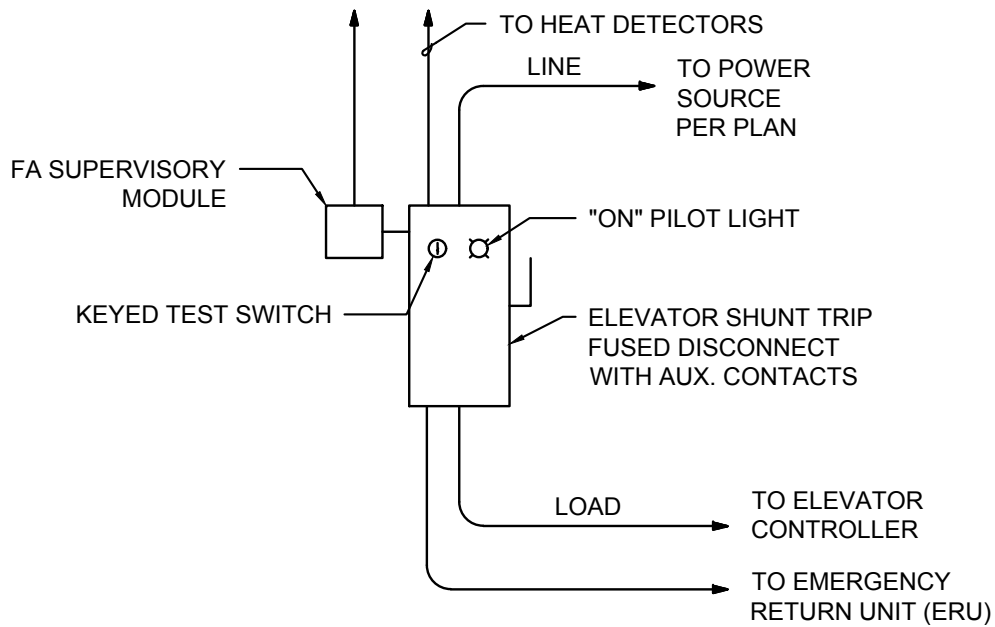
2 POWER PLAN

SCALE: 1/4" = 1'-0"



BUBBLE NOTES:

- 10 EMERGENCY RADIO AMPLIFICATION SYSTEM
BI-DIRECTIONAL AMPLIFIER
- 11 EMERGENCY RADIO AMPLIFICATION SYSTEM
POWER SUPPLY
- 12 CCTV SYSTEM PATCH PANEL & SWITCH WITH
POE EXTENDERS FOR SITE CAMERAS
- 13 FIRE ALARM CONTROL PANEL, BATTERY
CABINET & COMMUNICATOR - SEE RISER
DIAGRAM, 4/E702
- 14 CCTV SYSTEM STORAGE HARD DRIVE
- 15 ACCESS CONTROL & INTRUSION ALARM
SYSTEM HEAD END EQUIPMENT
- 16 INTERCOM / CLOCK SYSTEM HEAD END
SWITCH & PATCH PANELS
- 17 FIBER SWITCH, FIBER PATCH PANEL,
TELEPHONE EQUIPMENT, SERVER & UPS
- 18 STATION PATCH PANELS, WAP PATCH PANELS
& SWITCHES



6

ELEVATOR POWER RISER DIAGRAM

NOT TO SCALE

REF. SHEET

E701

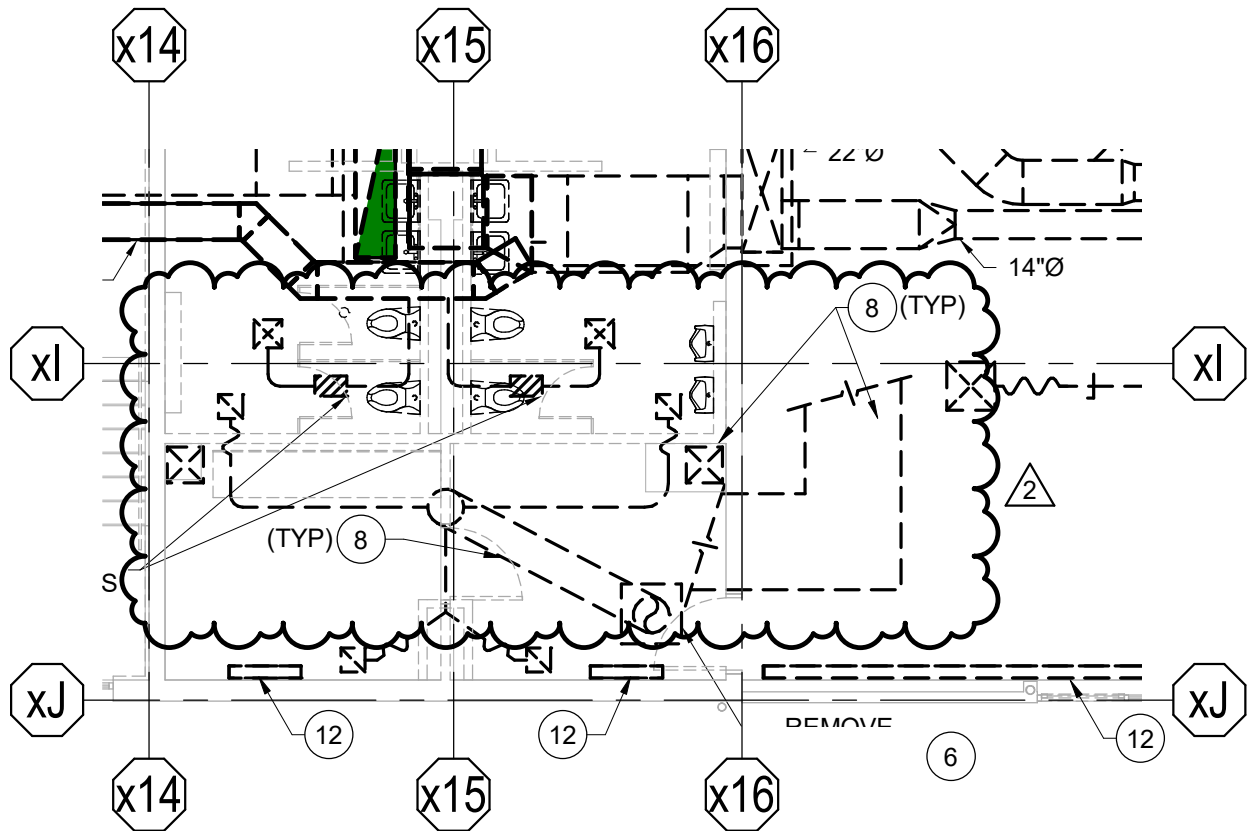
integrus
ARCHITECTURE

117 S.Main Street, Suite 100 Seattle, WA. 98104
(206) 628 - 3137 Fax: (206) 628-3138

KELSO SCHOOL DISTRICT NO. 458
**HUNTINGTON MIDDLE SCHOOL -
MODERNIZATION AND ADDITION**
500 REDPATH ST, KELSO, WA 98626

Addendum Drawing

DWG. #: **ADE-004**
JOB #: 21938
DRAWN BY: XXX
DATE: 07/02/21
REF. DOC.: ADDENDUM 02



REF. SHEET

MD402B

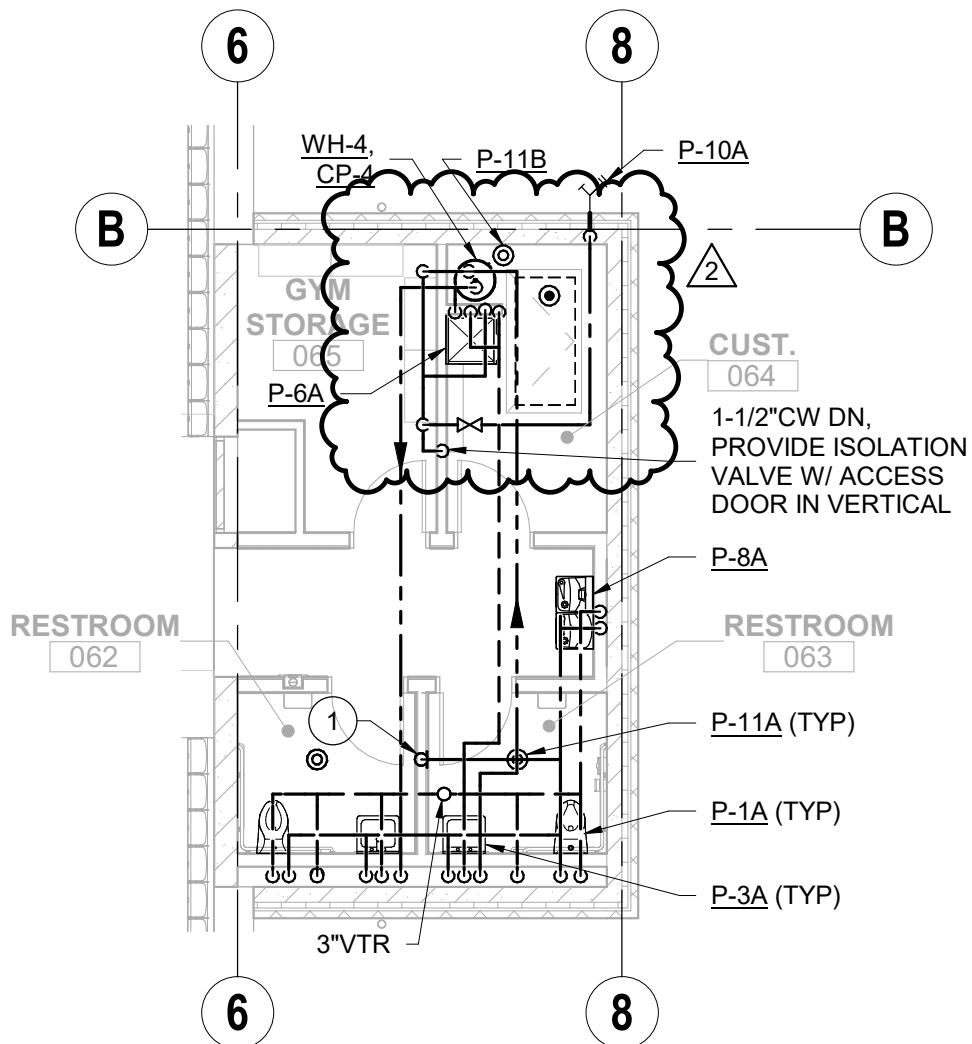
integrus
ARCHITECTURE

KELSO SCHOOL DISTRICT NO. 453
HUNTINGTON MIDDLE SCHOOL -
MODERNIZATION AND ADDITION
500 REDPATH ST, KELSO, WA 98626

Addendum Drawing

DWG. #: **ADM-003**
JOB #: 21938.00
DRAWN BY: NRH
DATE: 07/01/21
REF. DOC.: ADDENDUM 02

117 S.Main Street, Suite 100 Seattle, WA. 98104
(206) 628 - 3137 Fax: (206) 628-3138



REF. SHEET

M300C

integrus
ARCHITECTURE

117 S.Main Street, Suite 100 Seattle, WA. 98104
(206) 628 - 3137 Fax: (206) 628-3138

KELSO SCHOOL DISTRICT NO. 453
HUNTINGTON MIDDLE SCHOOL -
MODERNIZATION AND ADDITION
500 REDPATH ST, KELSO, WA 98626

Addendum Drawing

DWG. #: **ADM-004**
JOB #: 21938.00
DRAWN BY: NRH
DATE: 07/01/21
REF. DOC.: ADDENDUM 02

