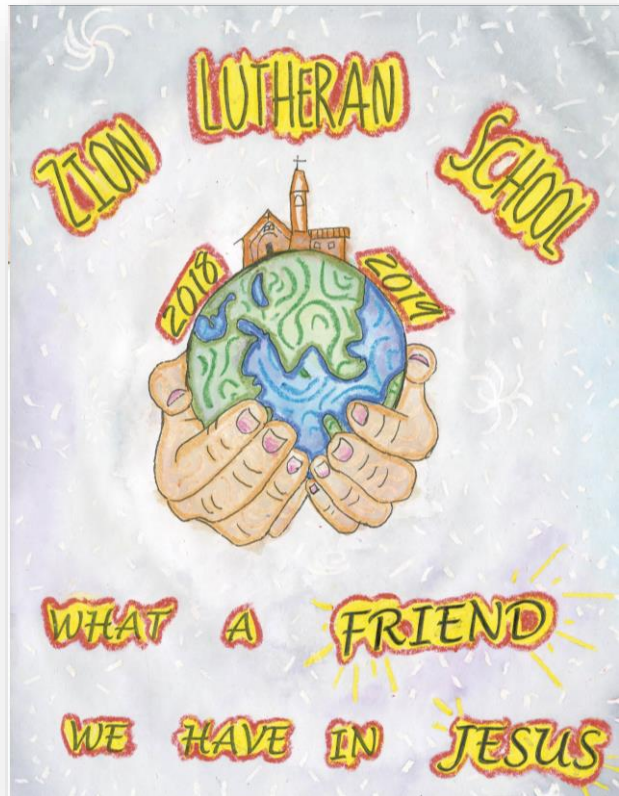


Zion Lutheran School

Christ-Centered, Classical Education



ACHIEVEMENT TEST RESULTS

2018-2019

A COMPARISON OF AVERAGES

ABOUT OUR TESTING

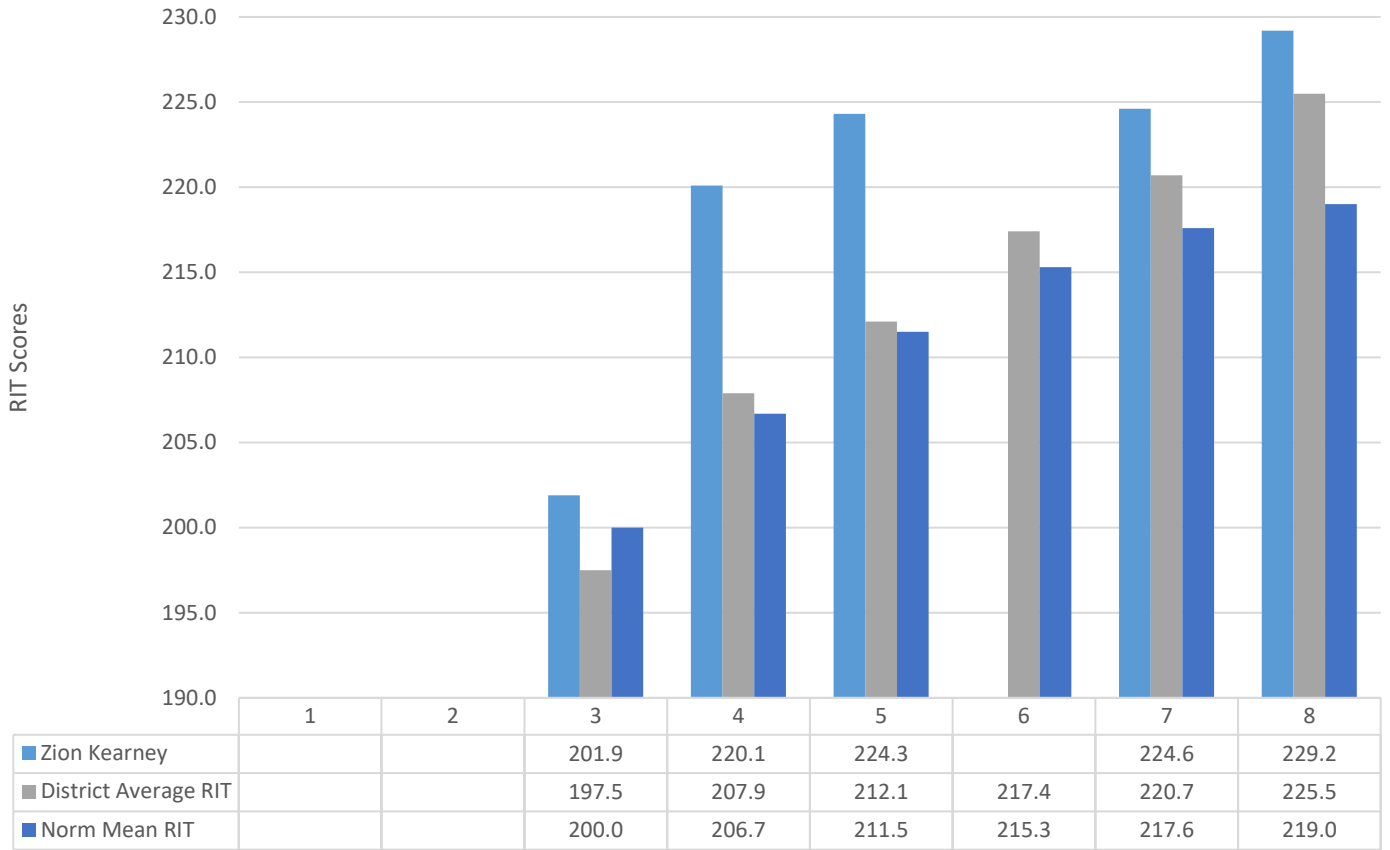
How does Zion Lutheran School compare to other schools academically? Zion uses the NWEA MAP assessment to gauge student learning. This test is given in fall, winter, and spring testing sessions and gives teachers, students, and families, immediate feedback on achievement. The MAP assessment has become the assessment of choice for the Lutheran schools of the Nebraska district and is also administered by Kearney Public Schools. This uniformity of testing allows us now to better compare school achievement using classroom averages. This document will illustrate how Zion compares with other Lutheran schools and students nationally.

Please Note:

- * 1st/ 2nd graders are only assessed on math and reading.
- ** Due to inadequate sample size, sixth grade scores are not available.
- ** These scores represent a true average of high and low student scores; no scores are excluded. Soli Deo gloria! To God alone be the glory!

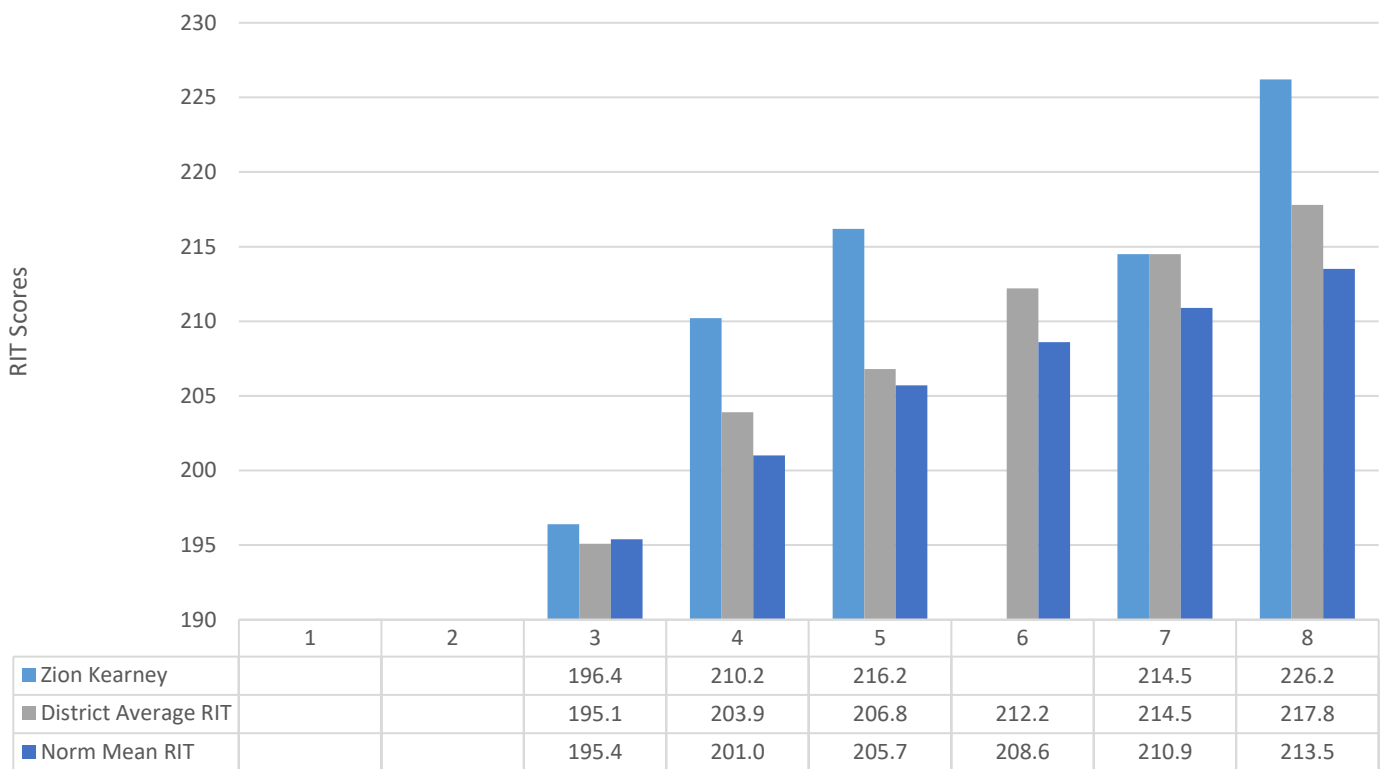
2018-2019 NWEA MAP Results: LANGUAGE ARTS

Zion Kearney vs. Nebraska Dist. vs. Nation



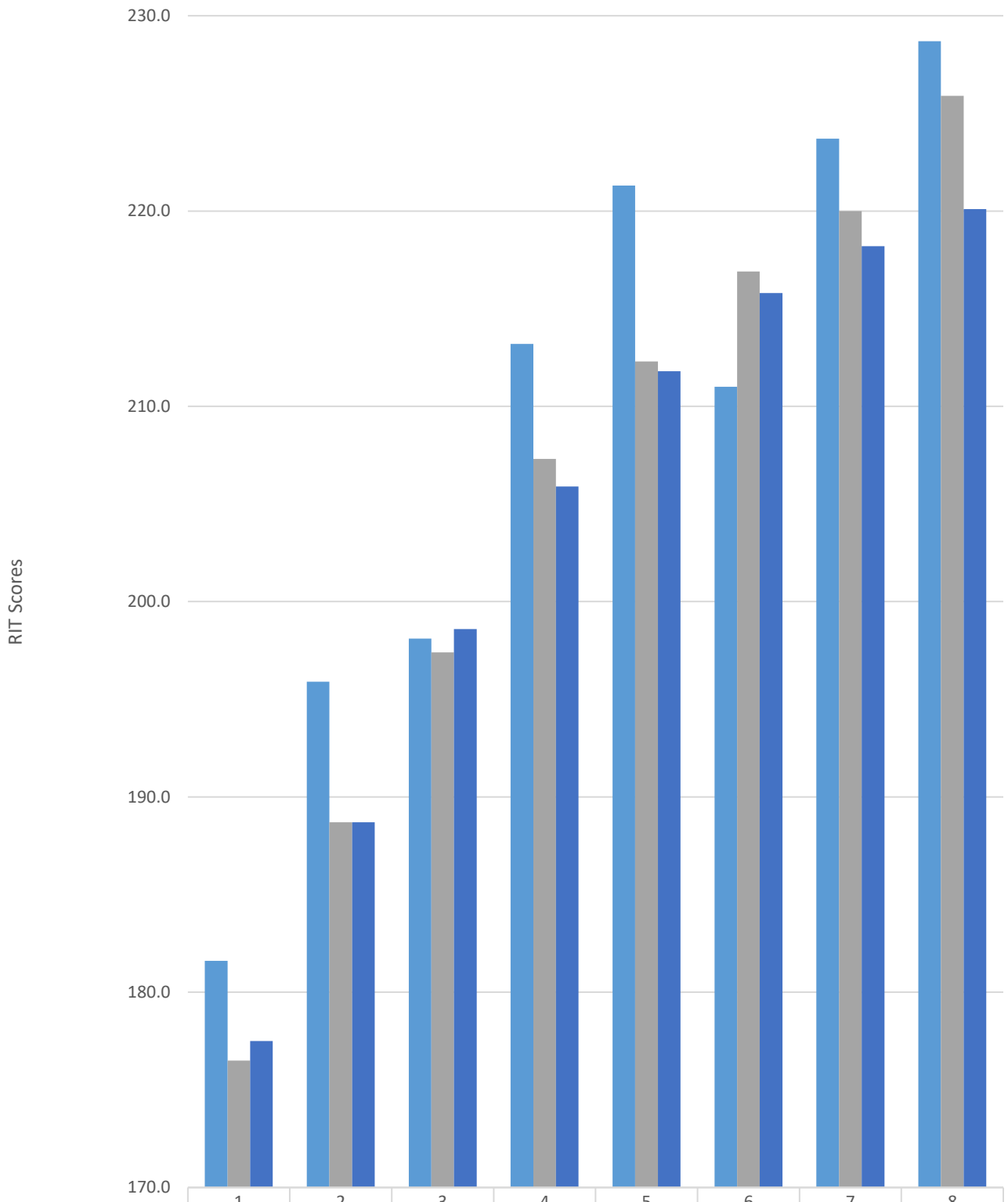
2018-2019 NWEA MAP Results: GENERAL SCIENCE

Zion Kearney vs. Nebraska Dist. vs. Nation



2018-2019 NWEA MAP Results: READING

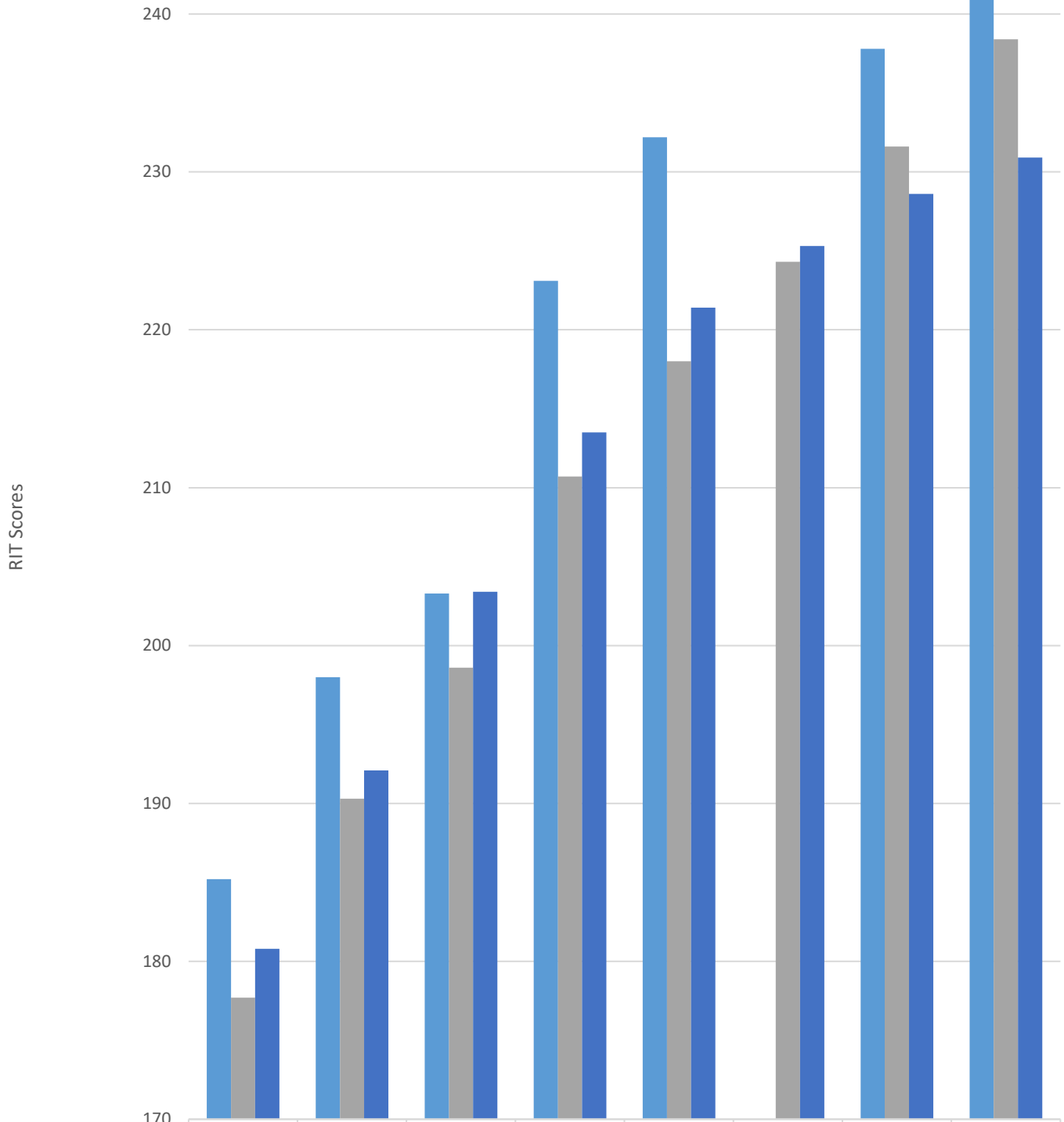
Zion Kearney vs. Nebraska Dist. vs. Nation



Zion Kearney	181.6	195.9	198.1	213.2	221.3	211.0	223.7	228.7
District Average RIT	176.5	188.7	197.4	207.3	212.3	216.9	220.0	225.9
Norm Mean RIT	177.5	188.7	198.6	205.9	211.8	215.8	218.2	220.1

2018-2019 NWEA MAP Results: MATH

Zion Kearney vs. Nebraska Dist. vs. Nation



Zion Kearney	185.2	198	203.3	223.1	232.2		237.8	243.8
District Average RIT	177.7	190.3	198.6	210.7	218.0	224.3	231.6	238.4
Norm Mean RIT	180.8	192.1	203.4	213.5	221.4	225.3	228.6	230.9