

# Weaver Middle School Family & Student Handbook 2023-2024



Elias Villa, Principal  
3076 East Childs Avenue  
Merced, California 93541  
(209) 723-2174

*[THIS PAGE INTENTIONALLY LEFT BLANK]*

## **TABLE OF CONTENTS**

Principal's Welcome .....	4
Statement of Purpose .....	5
Students Responsibilities & Rights .....	6
Parent Responsibilities & Rights .....	7
Teacher Responsibilities & Rights .....	7
Administrator Responsibilities & Rights .....	8
Weaver Staff and Contact Information .....	10
The Academic Year .....	11
Office Services .....	12
Attendance Policies and Procedures .....	13
Homeless Services .....	14
Weaver Union School District Food Services Program .....	14
School Library / Media Center (LMC) .....	15
Textbook Use .....	15
Extra Curricular Activities .....	15
After School Activities and Events .....	15
Physical Education .....	16
Health Services .....	18
School Safety .....	18
General Information .....	19
Internet Contract .....	19
Behavior Management Flow Chart .....	21
Discipline .....	22
Discipline Procedures .....	23
Transportation .....	26
Foggy Days .....	27
Restricted Items .....	28
Cell Phone Restrictions .....	28
Lost and Found .....	28
Parent Involvement .....	29
Dual Mailing .....	29
English Language Development .....	29
Family Support Team (FST) .....	30
Counseling Services .....	30
Promotion/Retention/Graduation .....	30
Parent / Student Mental Health Notification .....	33
Dress Code .....	35
Student / Parent Handbook Agreement Form .....	40

July 27, 2023

Dear Wildcat Students and Families,

It is my pleasure to welcome all of our Wildcat students and families to the 2023-2024 school year! We are all looking forward to the first day of school and kicking off a positive and productive year for your child. We want all of our students to become connected to Weaver in a positive way and truly enjoy their middle school experience.

The goal of every teacher and staff member is to Grow the Light for each and every Weaver student. *Grow the Light* means that as a member of the student centered Weaver community, we acknowledge the worth and dignity of ALL Weaver community members. By utilizing consistency and clear communication, we build integrity through productive struggle. We surround students with nurturing adults and empower students to achieve personal and academic success.

The most important skills we want all students to develop are strong literacy and critical thinking skills. We want all of our students reading on grade level and ready for Integrated 1 math by the end of 8th grade. Working with your teachers, you can meet your goals. Each Weaver student has the potential to do great things. In order to reach your potential you must put forth your best effort. Don't be afraid to make mistakes or ask questions. Your teachers are here to help guide you. Believe it or not, learning can be fun and rewarding. You will be amazed at how you feel after completing a difficult project or task.

Weaver is a great school because we have great students and staff. We expect all students to exhibit the "Weaver Way." The "Weaver Way" describes the positive behaviors we expect all students to display. All Weaver students are expected to behave in an appropriate and respectful way at all times on and off campus. Always remember that *Weaver students begin with responsible thoughts, leading to responsible actions, which help them develop into responsible citizens. The decisions you make today affect your future. Your Thoughts, Your Actions, Your Future!* Remember, you are capable of many wonderful things. The first step is to try. We look forward to helping you learn more about yourself and the world around you. You can do it!

Sincerely,

*Elias Villa*

Elias Villa  
Principal, Weaver Middle School

## STATEMENT OF PUPOSE

Weaver Students begin with responsible thoughts, leading to responsible actions, which help them develop into responsible citizens.

*The decisions you make today affect (y)our future.*

**(Y)OUR THOUGHTS, (Y)OUR ACTIONS -- (Y)OUR FUTURE!**



**Your administrative staff is committed to growing the light in each student.**

Grow the light means that as a member of the student centered Weaver community,

We acknowledge the worth and dignity of all Weaver community members. By utilizing consistency and clear communication, we build integrity through productive struggle. We surround students with nurturing adults and empower students to achieve personal and academic success.

# STUDENT RESPONSIBILITIES

## 1. BE SAFE

- I am personally responsible for being safe at school and all school activities.
- I will follow appropriate standards of dressing and/or grooming during school.
- I will report any known safety hazards or concerns.
- I will maintain a clean and safe campus that is free of graffiti, weapons, and drugs.
- I will report any bullying or harassment.
- I will avoid conflicts and physical or verbal violence.
- I will not trespass on other school campuses while school is in session.

## 2. BE RESPECTFUL

- I will treat others the way I want to be treated.
- I will respect school authority.
- I will treat people fairly and respect their rights.
- I will respect private and public property.
- I will be honest with myself and with others.
- I will avoid spreading rumors or gossip verbally or electronically.
- I will respect each person's right to be different and I will look for the good in others.

## 3. BE RESPONSIBLE

- I will take responsibility for my actions.
- I will choose how I respond to others.
- I will give my best in everything I do.
- I will come to school regularly and on time, ready to learn.
- I will help to create a positive school environment.
- I will use electronic devices and school computers safely, respectfully, and responsibly.
- I will return what I borrow to the same person, in the same condition.

All students are entitled to due process. This means there are certain procedures that school officials must follow prior to taking appropriate disciplinary action. There are also procedures students and parents/guardians must follow if they do not agree with the school's actions. If a student does become involved in a situation in which a suspension or expulsion might result, both the student and his/her parents/guardians will be given a more detailed description of the due process procedures and rights. Challenges or objections to suspension may be addressed directly to the school site-principal. Students who are recommended for expulsion have a right to an expulsion hearing. (EC 48900, 48915)

# STUDENT RIGHTS

1. To attend school and classes unless removed under the process as specified in the Educational Code and District rules.
2. To be informed about school and district rules and regulations pertaining to students.
3. To receive an appropriate educational program designed to meet the individual needs of regular class students and the special needs of those who are handicapped.
4. To attend school in an academic and social climate that is free from fear and violence.
5. To receive fair and reasonable treatment from those who are responsible for enforcing standards of student conduct.
6. As specified in Educational Code 46010.1 any pupil in grades 7-12, inclusive may be excused from school for the purpose of obtaining confidential medical services without the consent of the pupil's parent/guardian.

## PARENT / GUARDIAN RESPONSIBILITIES

1. To make sure their children attend school regularly and on time, have adequate sleep and nutrition, practice proper personal hygiene and wear appropriate clothing.
2. To be familiar with District policy and school rules and regulations.
3. To provide the school with a current emergency telephone number where a parent/guardian or a responsible adult may be reached at all times.
4. To actively participate in efforts to improve student's behavior when necessary by assisting school personnel in planning and implementing a prescriptive program.
5. To maintain consistent and adequate control over their children and to support reasonable control measures as applied by school personnel.
6. To cooperate with the school in bringing about improvements designed to enhance the educational program offered students.
7. To make provisions for off-campus care for the student in case of suspension, illness or accident.
8. To see that their child attends school except when ill.

## PARENT / GUARDIAN RIGHTS

1. To be informed of District policy and school rules and regulations related to their children.
2. To visit school periodically and upon request to participate in conferences with teachers or counselors regarding the academic and/or behavioral status of their children.
3. To inspect their child's school records with the assistance of a certificated staff member for proper explanation.
4. To be informed of significant facts and school action related to the student's behavior and academic progress.

## TEACHER RESPONSIBILITIES

1. To assume responsibility for enforcement of the established District and school rules.
2. To conduct a planned classroom program with consideration for individual differences.
3. To set a positive role model for students to follow.
4. To initiate, post, and enforce a set of classroom regulations consistent with school and District policy.
5. To maintain consistent and adequate control over their students.
6. To take prompt, appropriate action towards those students who misbehave.
7. To hold students accountable for their conduct while at school or school-sponsored activities beyond the regular school day for which the teacher has directed or assigned supervisory responsibility.
8. To immediately inform parents/guardians when behavior, attendance, or academic problems arise that cannot be dealt with in a routine manner at school.

## TEACHER RIGHTS

1. To expect students to behave in a manner which will not interfere with education for themselves and for other students.
2. To teach with interruptions held to a minimum.
3. To teach in an environment that is conducive to learning.
4. To receive parental support related to academic and social progress of students.
5. To suspend a student from class within the limits of the law.
6. To be informed of a student's record or behavior when the student is administratively transferred for disciplinary reasons at the time the student is enrolled and of any changes in that record which will affect classroom teaching objectives and/or attendance.
7. To be informed of a student's record of behavior that may affect classroom teaching objectives.
8. To receive administrative support when enforcing rules designed to provide appropriate school and classroom climate.

# ADMINISTRATOR RIGHTS

1. To expect students to behave in a manner which will not interfere with educational programs and related student activities offered by the school.
2. To receive parental support related to academic and social progress of students.
3. To receive support from all school employees and parents/guardians in maintaining campus control.
4. To suspend, recommend exclusion, expulsion or exemption within the limits of the law.

# ADMINISTRATOR RESPONSIBILITIES

1. To provide leadership that will establish, encourage and promote good teaching and an effective learning environment.
2. To provide a positive role model and leadership in developing and implementing school rules and regulations including attendance reporting to parents/guardians.
3. To publicize school and District rules and regulations at the beginning of each school year or at the time of students enrollment during the year.
4. To grant access to pupil records by parent/guardian or others with proper authorization.
5. To develop and implement procedures for student assessment and placement into appropriate educational programs.
6. To initiate and enforce such control measures as needed to establish and maintain an environment in which learning and teaching can take place.
7. To hold students accountable for their conduct and attendance and to take prompt, appropriate action towards those students who misbehave, are excessively absent, or are truant.
8. To support staff members in enforcing school district rules and regulations including due process timelines.
9. To inform teachers at the time the student is enrolled of records of the student's behavior when a student is administratively transferred for disciplinary reasons.
10. To inform appropriate staff of any Review Boards or Hearing Panel decisions concerning a student that may affect classroom objectives.
11. To inform the Faculty of the purpose and general functioning of School Conferences, the District Administrative Hearing Panel, the School Attendance Review Boards, and the PBIS Team.
12. To request assistance from district support services and community agencies and resources in cases indicating such action.
13. When school is in session to acknowledge within 24-48 hours, direct phone or email contact for parent/guardians or community members regarding a specific matter related to their student or other issues of concern. The acknowledgement will include either a response to the concern or a date by which a response will be provided.

**NOTE:** Nothing in this policy statement shall be construed to prohibit a teacher, administrator or other District employee from protecting himself/herself or others, or school property by restraining a student, confiscating a weapon or turning over a lawbreaker to appropriate law enforcement agencies.

The School District or Board of Trustees shall not be responsible or in any way liable for the safety of any pupil of the public school at any time when such a pupil is not on school property, unless the District or Board has undertaken to provide transportation for such pupils to and from school premises, has undertaken a school-sponsored activity off the premises of such schools, has otherwise specifically assumed such responsibility or liability or has failed to exercise reasonable care under the circumstances.

Please sign and return that you have read and agree with the Student, Parent/Guardian, Teacher, and Administrator Rights and Responsibilities on Page 37.



*[REMAINDER OF PAGE THIS INTENTIONALLY LEFT BLANK]*

## Weaver Middle School Staff and Contact Information

School Hours: 8:35 a.m.-3:35 p.m. - School Office Hours: 8:00 a.m.-4:00 p.m.

Administration		Office Staff	
Elias Villa, Principal	evilla@weaverusd.org	Alejandra Garza	agarza@weaverusd.org
Michelle Smith, VP	mcherrysmith@weaverusd.org	Dalisay Ceja Perdomo	dcejaperdomo@weaverusd.org
Amanda Bertram, VP	abertram@weaverusd.org	Amy Hartley, Attendance	ahartley@weaverusd.org
		Keren Garcia	kagarcia@weaverusd.org
Academic Coaches		Library	
Vielka PUNCHES	vpunches@weaverusd.org	Jacqueline Brummel	jbrummel@weaverusd.org
Michael Bracey	mbracey@weaverusd.org	Theresa Hargrove	thargrove@weaverusd.org
Juanita Esquiviz	jesquiviz@weaverusd.org		
Student Support & Counselors		Electives	
Christopher Easley	ceasley@weaverusd.org	Rachael Neff-Bracey	rneffbracey@weaverusd.org
Elizabeth Almanzar-Wilson-Counselor	ealmanzarwilson@weaverusd.org	Eddie Regalado	eregulado@weaverusd.org
Carlos Gomez-Counselor	cgomez@weaverusd.org	Kevin Ramirez	kramirez@weaverusd.org
Fabian Bega-Counselor	fbega@weaverusd.org		
Rebecca Ybarra, Community Liaison	rybarra@weaverusd.org		
Sixth Grade			
Veronica Banda	vbanda@weaverusd.org	Prabhjit Dhanoa	pdhanoa@weaverusd.org
Nayeli Avelar	navelar@weaverusd.org	Stacy Criswell	scriswell@weaverusd.org
Esperanza Flores	eflores@weaverusd.org	Anicka Brock	abrock@weaverusd.org
Joseph De Los Reyes	jdelosreyes@weaverusd.org	April Beck	abeck@weaverusd.org
Angelica Villanueva	avillanueva@weaverusd.org	Jay Saelee	jsaelee@weaverusd.org
Jason Ingram	jingram@weaverusd.org	Talina Colovich	tcolovich@weaverusd.org
Seventh Grade			
Laurie Yu	lyu@weaverusd.org	Kaveeta Rios	krios@weaverusd.org
Kamalpreet Rai	krai@weaverusd.org	Deepa Radhakrishnan	dradhakrishnan@weaverusd.org
Amy Downey	adowney@weaverusd.org	Tommy Thao	tthao@weaverusd.org
Tim DiCarlo	tdicarlo@weaverusd.org	Alex Thengvall	athengvall@weaverusd.org
Rafael Guizar	rguizar@weaverusd.org	Camille Fagundes	cfagundes@weaverusd.org
Eighth Grade			
Shannon DeAnda	sdeanda@weaverusd.org	Rhiannon Dewey	rdewey@weaverusd.org
Macey Desjardins	mdesjardins@weaverusd.org	Anthony Escandon	aescandon@weaverusd.org
Raj Mohan	rmohan@weaverusd.org	Jacqueline Gudino Garcia	jugudinogarcia@weaverusd.org
Elizabeth Ramirez	ejuarez@weaverusd.org	Robert Van Binsbergen	rvanbinsbergen@weaverusd.org
Nathan Mazon	nmazon@weaverusd.org		
Physical Education		Special Education	
Phil Fierro	pfierro@weaverusd.org	Alexandria Marquez	amarquez@weaverusd.org
Jjillian Leon	jleon@weaverusd.org	Reinetta Bazemore	rbazemore@weaverusd.org
Andrew Damigo	adamigo@weaverusd.org	Wendy Williams	wwilliams@weaverusd.org
Karina Avila	kavila@weaverusd.org	Christal Zavala	czavalasanchez@weaverusd.org
		Ramon Hernandez	rhernandez@weaverusd.org
		Ryan Callister, School Psychologist	rcallister@weaverusd.org
Child Nutrition		Nurse	
Danielle Johnson, Director	djohnson@weaverusd.org	Laura Young, District Nurse	lyoung@weaverusd.org
Blanca Lopez-Food Services Clerk	blopez@weaverusd.org	Aquina Tucker	atucker@weaverusd.org

## Weaver Middle School Academic Year 2023-2024

### School Holidays

September 4 Labor Day  
 November 10 Veterans Day  
 January 15 Martin Luther King, Jr. Day  
 May 27 Memorial Day

### School Recesses

October 23 – November 3 (Track Off)  
 November 20 - 24 (Thanksgiving Break)  
 December 21 – January 5 (Winter Break)  
 February 12 – 23 (Track Off)  
 Mar 29 – April 5 (Spring Break)

### Trimester

### Starts

### Ends

1	July 27, 2023	Oct. 20, 2023 (Min Day Release on 10/20 @ 1:35)
2	Nov 6, 2023	Feb. 9, 2023 (Min Day Release on 2/9 @ 1:35)
3	Feb. 26, 2024	June 7, 2024 (Min Day Release on 6/7 @ 1:35)

### **Daily Bell Schedule**

Monday will remain our minimum day with dismissal at 1:35 PM

Periods	Regular Bell Schedule	Periods	Minimum Day Bell Schedule
1	8:35-9:21 (46 min.)	1	8:35-9:07 (32 min)
2	9:25-10:10 (45 min.)	2	9:10-9:40 (30 min)
3	10:14-10:59 (45 min.)	3	9:43-10:13 (30 min)
4	11:03-11:48 (45 min.)	4	10:16 -10:46 (30 min)
5 (6 <sup>th</sup> Lunch)	11:52-12:28 (36 min.)	5 (6 <sup>th</sup> Lunch)	10:49-11:21 (30 min)
6 (7/8 Lunch)	12:32-1:08 (36 min.)	6 (7/8 Lunch)	11:24 -11:56 (32 min)
7	1:12-1:57 (45 min.)	7	11:59-12:29 (32 min)
8	2:01-2:46 (45 min.)	8	12:32-1:02 (30 min)
9	2:50-3:35 (45 min.)	9	1:05-1:35 (30 min)

### Minimum Days for Weaver Middle School

All students will be dismissed at 1:35 PM on minimum days.

Weaver School will have a Minimum Day most Mondays of the month.

August 7, 14, 21, and 28

September 11, 18, and 25

October 20 (Track off Friday)

November 7,8 and 9 (Parent Teacher Conferences)

November 27

December 4

January 8, 22 and 29

February 9 (Track Off Friday)

March 7 and 8 (At Risk Conferences)

April 8, 15, 22 and 29

May 6, 13, and 20

June 7 (Track Off Day/Last Day of School)

# OFFICE SERVICES

## School Office Hours

8:00 a.m. – 4:00 p.m. Monday- Friday

## Office Phone Use

The school phone is a business phone. Students are allowed to use the office phones only in situations where contact with the home is essential during the regular school day. Students must have permission from the office staff, a teacher, or nurse to use the school phone. The office phone is available for students to use after school to contact parents. Students must sign the log-in book to use the office phone.

## Visitors

Parents are encouraged to visit the school and may shadow their children in class. We ask that parents set up a date and time in advance so there is no class interruption. We do require at least 24-hours notice to go into classrooms.

**All visitors must sign in at the school office and provide identification.  
Visitors will be presented with visitor identification.**

*[REMAINDER OF PAGE THIS INTENTIONALLY LEFT BLANK]*

# ATTENDANCE POLICY AND PROCEDURES

## Attendance

School attendance is very important for each student. Valuable instructional time is lost when a student is absent or tardy. *Academic success is a direct result of maximum instructional time!* When a child is absent from school the parent should contact the school office to report the reason why the child is not in attendance. Parents may also write a note explaining the reason for the absence.

Regular and punctual attendance is required by state law. All absences must be verified as stated in the previous paragraph(excused absences are listed in State Education Code Section 46010) as follows: absence due to illness, quarantine, professional medical and doctor appointments relating to physical needs, attendance at a funeral for a member of one's immediate family, or exclusion of student's failing to meet immunization requirements (five-day limit). Excessive absences excused by parents or unexcused absences are monitored through the attendance monitoring program. If there is an ongoing medical condition, this should be reported to the school nurse. Excessive absences may result in letters notifying parents of the absences and possible referral to the School Attendance Review Board (SARB).

Please notify the office by 11:00 a.m. if you are picking your child up early. Students will not be called out of class during the last 30 minutes of school to go home. Please expect a delay in picking up your child during lunch periods without prior office notification.

## Tardies

Students who are habitually tardy to school lose valuable learning time and disrupt regular classroom instruction. Being on time teaches the child the importance of punctuality. Be sure to see that your child receives sufficient rest each night so that he/she will arrive at school on time. Students are encouraged to get to school on time and should be on campus by 8:30 a.m.. Students who are late to school **MUST** check in at the school office for a late pass before they are accepted into the classroom. Repeated tardiness to class throughout the school day can result in consequences such as lunch or after school detention. **Every 30 minutes missed from school at ANY time is Equal to an absence unless a Doctor's note is provided.**

Weaver teachers will ensure that students are aware of their classroom expectations for tardies to ensure students have the knowledge necessary to prevent classroom tardies. This will also be outlined in teacher syllabus that are handed out at the beginning of the school year. Tardies are reset at the end of each trimester and school year.

**1-2 Tardies:** Warning, review of tardy policy.

**3 Tardies:** 15-minute lunch detention, lunch reflection with review of tardy policy, restorative conference, parent notification.

**4-5 Tardies:** 30-minute lunch detention, restorative conference with review of tardy policy, parent notification, check in check out initiated.

**6 Tardies:** 1-hour after school detention, Family/Administrator restorative conference, after school reflection, other means of correction such as a Behavior Contract.

**7 Tardies:** 2 days of 1-hour after school detention, Family/Administrator restorative conference, after school reflection, other means of correction such as a Behavior Contract, administrative discretion of consequences.

**8+ Tardies:** 2 days of 1-hour after school detention, Family/Administrator restorative conference, after school reflection, other means of correction such as a Behavior Contract, administrative discretion consequences such as intervention room for 1 day.

**Tardy Sweeps:** Students caught will be assigned after school homework club (1 hour), parents will be notified 1 day prior.

### **Make-Up Work**

Parents may request make-up work for students who will be absent from school and make arrangements for pick-up. Make-up work will be requested from teachers and requires 48-hours notice to be given to teachers for preparation. Work will be collected in the Weaver office.

### **Independent Study**

Short term independent studies will no longer be offered starting with the 2023-2024 school year at Weaver USD. Students leaving the area for a period of time will be marked absent - unexcused.

## **HOMELESS SERVICES**

Weaver Union School District supports the enrollment, attendance, and achievement of homeless students to ensure they receive equal access to educational opportunities. Per the McKinney-Vento Homeless Assistance Act, Subtitle B of Title VII, Education for Homeless Children and Youths (U.S.C 11431 et seq.), homeless students lack a fixed, regular, and adequate night- time residence. They have the right to remain in their school of origin or be immediately enrolled in their school of residence (per their best interest), as well as other rights and protections. To receive more information and to sign a student up for homeless student rights and protections please contact the school office. You may also directly contact the district's Homeless Program Coordinator, Mike Weber at 209-723-7606.

## **WEAVER UNIFIED SCHOOL DISTRICT NUTRITION SERVICES PROGRAM**

The Weaver Union Nutrition Services is dedicated to serving our students meals that meet or exceed federal nutrition guidelines in order to fuel their minds and bodies, preparing them for academic success. Meals consist of whole grain entrees, proteins, fresh fruits and vegetables, 100% fruit juice and low fat & fat free milk. We also offer vegetarian menu options upon request. If your child has a dietary disability requiring a meal accommodation, please contact Nutrition Services.

### **Alternative Income Forms**

Our district participates in the Community Eligibility Provision, which allows us to provide both breakfast and lunch to ALL students at no cost. Parents **MUST** fill out the Alternative Income Form each year. This form is generally provided during round-up. This form is **NOT** for determining eligibility. The information provided in the form will help better support our district for other state and federal supplemental program opportunities. Forms will also be available at the school office or in the District Food Service Office.

### **Meals**

Adults may purchase breakfast and lunch daily. Milk is included in breakfast and lunch. Breakfast is served daily from 7:30 a.m. to 8:30 a.m. Home prepared and cafeteria foods may not be shared at school. Once

students have successfully gone through the point of sale system in the cafeteria (entering their number) they may exit the cafeteria and eat outside; as long as the student places their garbage in the trash cans located throughout the school. Weaver Middle School also offers a Grab and Go option for students to “grab” a lunch just outside of the cafeteria. This option will remain active as long as students place their garbage in the trash cans located all throughout school.

## SCHOOL LIBRARY / MEDIA CENTER (“LMC”)

The Library Media Center (LMC) is open for research, study, computer access, and recreational reading of library materials each day from 8:05 a.m. to 3:35 pm. Should the LMC be closed for class use or testing, there will be announcements and notices indicating the date and hours closed.

Students are expected to take excellent care of all school and library books, materials, and equipment that are loaned or assigned to them. All school property should be returned in the same condition, exclusive of wear from reasonable use, in which it is received. Students should report immediately any lost or damaged books, materials and/or equipment to the teacher librarian. Students and parents will be held financially responsible for loss or damage. Students failing to reimburse the district for lost or damaged books, materials and/or equipment will be subject to loss of privileges or disciplinary action.

## TEXTBOOK USE

Weaver students are issued approximately \$200.00 worth of textbooks at the start of each school year of their enrollment at Weaver. Students and parents are responsible for the return of all textbooks and any damages that may occur during their use. Students are advised to keep all textbooks covered and away from pets and smaller siblings. Lost or damaged textbooks or other school property could result in loss of privileges extended to students throughout the school year. This would include any fun trips or activities, such as the 8<sup>th</sup> grade Great America trip or school dances.

## EXTRA CURRICULAR ACTIVITIES

### Eligibility

To be eligible to participate in extra-curricular and co-curricular activities, students must demonstrate satisfactory educational progress for the previous grading period (Education Code 35160.5).

To be eligible to participate, students must meet the following criteria:

- ◆ Minimum of a C average or 2.0 grade point average.
- ◆ Students with an IEP must earn a minimum 1.67 grade point average.

### Academic Activities / Clubs

Weaver has an award winning Pentathlon Team, Chess Club, Student Council, a chapter of the California Junior Scholarship Federation, and many other clubs and activities. Announcements will be made throughout the school year notifying students of opportunities. All students are encouraged to get involved! A list of clubs and activities is available in the school office.

### Homework Support

Weaver offers after school homework support three days a week. Tuesday through Thursday, Weaver teachers stay from 3:35 p.m.-4:35 p.m. to assist students with homework or provide them with a quiet place

to work. On Homework Support days a late bus is provided with limited stops. To find out where the bus stops please contact the school office.

## Athletics

School athletics are an important part of the program offered to students. School athletics include inter-school sports such as volleyball, soccer, cross country, basketball, baseball, softball, and track. **Team uniforms must be turned in at the end of each season. Failure to do so will disqualify the student from any other after school sport.**

## Band

Weaver Middle School offers students an opportunity to participate in its award winning band program. Students may join Beginning Band, Intermediate Band, Advanced Band, Marching Band or Color Guard (ID units and Tall Flags). Students who wish to participate must meet eligibility requirements, and be recommended by their teacher, and be approved by the band director.

# AFTER SCHOOL ACTIVITIES AND EVENTS

All students who remain after school for school sponsored activities or events **must** have a parent(s) present to remain on campus. Student(s) without a parent will be asked to leave.

# PHYSICAL EDUCATION

**All students must have PE uniforms** PE uniforms are required for Weaver students. PE clothes are sold in the school office. Please be sure to put your child's last name on the shirt and shorts for easy identification. Failure to wear the PE uniform during PE class will result in loss of privileges and/or affect your child's grade. If the purchase of the PE uniform is a hardship please contact administration or your child's PE teacher.

## UNIFORMS

1. SHORTS - Weaver PE shorts, black, or gray athletic shorts
2. SHIRT - Weaver PE shirt, Weaver Spirit Shirt, or Solid Gray t-shirt [Last name written in Sharpie]
3. SWEATS - Weaver sweats, black or gray sweats
4. SWEATSHIRT - Weaver sweatshirt, or PE shirt underneath (as warranted by weather)
5. SHOES - Appropriate athletic shoes are also required. NO SANDALS/FLIP-FLOPS/SLIDES/CROCS etc.

If no uniform is brought, “**loaner clothes**” must be worn; if loaner clothes are not worn it is considered a non-dress for the day. Students will continue to participate in PE regardless of PE uniforms or “loaner clothes.”

**All Backpacks must be stored in the locker room during PE.**

**NO FOOD or NO SODAS in the Locker Room or during PE !! . WATER ONLY!!**



Students must be in designated PE areas, as determined by the teacher, when the tardy bell rings. Failure to do so will result in a tardy. All students must remain in designated PE areas until dismissed by the teacher.

### **Excused Students**

1. In order for any student to be excused from physical education a written excuse must be signed by a parent and presented to the physical education teacher.
2. Parents may excuse a student for no more than two days. Students with excessive parent excuses may be required to meet with administration or the school nurse.
3. Excuses for a period of three days or more must be signed by a physician.
4. Any excuse must be for health reasons in order to be honored by all the physical education teachers. (Religious reasons are also valid).
5. The physical education teacher may assign excused students modified physical activities.
6. Students excused from strenuous activity and restricted to modified physical activity shall be permitted to participate only in those activities that are not in conflict with the reasons of the excuse.
7. Students excused from physical education, regardless of the type of excuse, will still report to the physical education teacher and receive assignments for the period and shall carry out the assignment. The assignment shall be given as outlined above.

***\*\*\*Aerosols of any type are not allowed at school. Students may bring a stick, or roll-on deodorant. No glass perfumes or colognes***

# HEALTH SERVICES

## Children Becoming Ill While at School

When a child becomes ill or injured at school, parents are contacted and arrangements are made for further care. Minor injuries are given first aid by trained staff, such as the school nurse or a health clerk aid. Please be sure to keep your child at home if they are running a fever or having other symptoms of a contagious illness. Contact the Weaver school office to report the illness. If students use their cell phones to call parents without going through the office or nurse, it can result in disciplinary action for using their phone on campus during school hours.

## Medication

If a child needs to take medication during school hours please contact the school nurse or health aide to assist. A Medication Administration Authorization form needs to be completed by both the parent and the treating physician. Students may carry their own inhalers for asthma control if this is allowed by the parents; however, a form is still required. Annual renewal of the authorization form required. If a child has a known severe allergy that may require the use of an Epi-pen, the parent is responsible for providing that medication.

## Head Lice

According to the State Department of Health Services the complete removal of all nits (eggs) is the most successful method of eliminating outbreaks in school. Any student with evidence of live, adult lice will be sent home for home treatment and is to return the next day if treated. Parents are to monitor their child's treatment. Subsequent treatments may be needed.

## Home Hospital Teaching

When a student is unable to come to school for a period of time due to illness, injury, etc., upon **parent request** with verification by a physician the principal will arrange to provide a home teacher for the student. A teacher will contact the parent and make arrangements for the teaching to take place. Again, the parent must make the request to the school before home teaching may begin. Please contact the District Nurse (209)-723-2174 if you have questions.

# SCHOOL SAFETY

## Safety

Please discuss safety to and from school with your child. Children walking to school should face the oncoming traffic and use the crosswalk only when it flashes it is safe to cross. Children riding a bike should obey all laws concerning good bicycle safety. **Remember a bicycle is considered a vehicle and must obey the same laws as an automobile.**

## Bicycles

Pupils wishing to ride their bicycles to school should have a lock and a helmet. The bicycle should be locked

while it is parked at school. Please discuss bicycle safety with your children.

## GENERAL INFORMATION

1. Students are not to be on the school grounds earlier than 8:05 a.m. as there is no supervision for students at school until that time. Children who are brought to school by their parents are to be dropped off at the front of the school on Childs Avenue and remain there until the gates are opened.
2. Children are to leave the school grounds as soon as school is dismissed unless they are participating in extracurricular activities.
3. Children are not permitted to leave the school grounds without written permission from the parent. This note must be validated at the school office by the principal or designee.
4. Please keep the school office notified of any change of address or telephone number. It is important that we have these changes in case of illness or injury to your child while at school.
5. If you plan to move, please contact us 24-hours in advance so school records may be handled properly.

## WEAVER UNION SCHOOL DISTRICT ACCEPTABLE USE CONTRACT FOR USING THE INTERNET

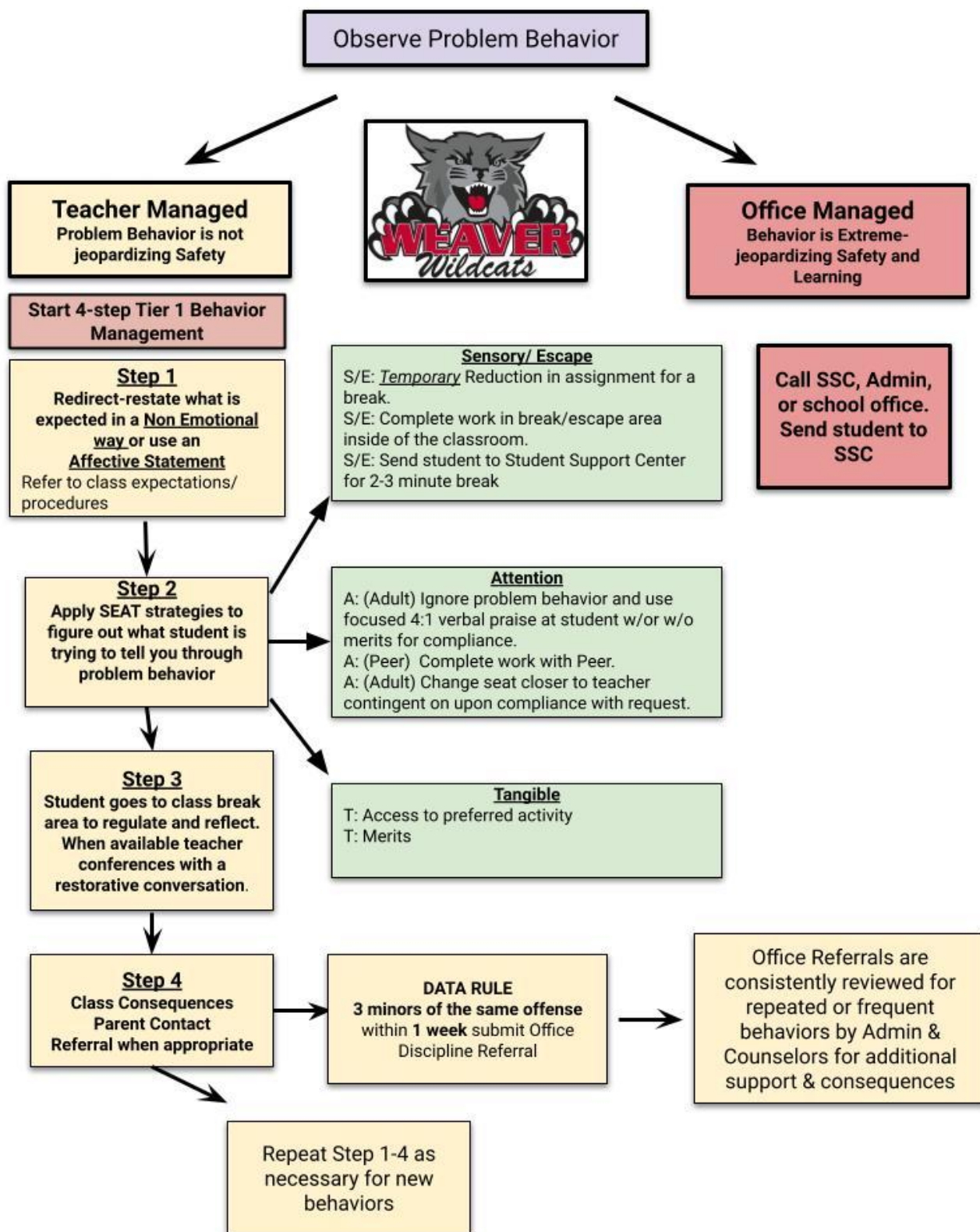
1. I understand that the use of the Internet is not a right. When given the opportunity to use a computer at school I must use it appropriately.
2. I understand that the use of a computer at school is solely for educational purposes. I am not to use a computer at school to play non-educational games.
3. I understand that the district has the right to review any files or sites that I have had access to while on a computer at school.
4. Whenever I use email I will remain polite, use only appropriate language and will not give out my phone number or address. I also understand that any e-mails that I send out or receive while at school may be reviewed by school personnel.
5. I will take proper care of any computer that I am allowed to use while at school. I will not damage the computer nor will I intentionally upload a computer virus on a computer at school.

6. I will not take writings, pictures or ideas of other people that you find on the internet and present them as my own.
7. I understand that if I violate the rules listed above I may lose the privilege of using a computer while at school. I also understand that I may be subject to discipline at school should I violate these rules.

**Required Signatures: See Page 37.**

*[REMAINDER OF PAGE THIS INTENTIONALLY LEFT BLANK]*

# Behavior Management Flow Chart



# DISCIPLINE

Minor classroom infractions will be handled by the classroom teacher and students will be subject to consequences as outlined in the chart below. Administration will only see students who are referred for more serious violations such as fighting, theft, extreme defiance, etc. The expectation is that parents will support our efforts to set a high standard for student behavior and assist in the disciplinary process.

- ◆ All teachers have the right and responsibility to teach.
- ◆ All students have the right and responsibility to learn.
- ◆ No one has the right to prevent teachers from teaching and students from learning.

Students are expected to:

1. Be in their assigned seats on time with the proper materials and leave when dismissed by the teacher.
2. Respect and follow the directions of the adult in charge (i.e., teacher, aide, yard supervisor.)
3. Take proper care of school books, supplies, furniture, facilities, and respect personal property.
4. Contribute to a positive school climate and by not becoming involved in fighting or bullying.
5. Never use profane, racist, or sexist remarks.
6. Eating or drinking is not allowed outside of the cafeteria. Water in clear plastic bottles may be permissible on hot days.

***These rules apply to all students while on campus, at off-campus school functions, and coming to and from school.***

## **Cheating and Plagiarism**

Cheating/copying/plagiarizing is not permitted and will not be tolerated at Weaver Middle School. The following disciplinary actions will result when a student is referred for cheating/copying on a class assignment:

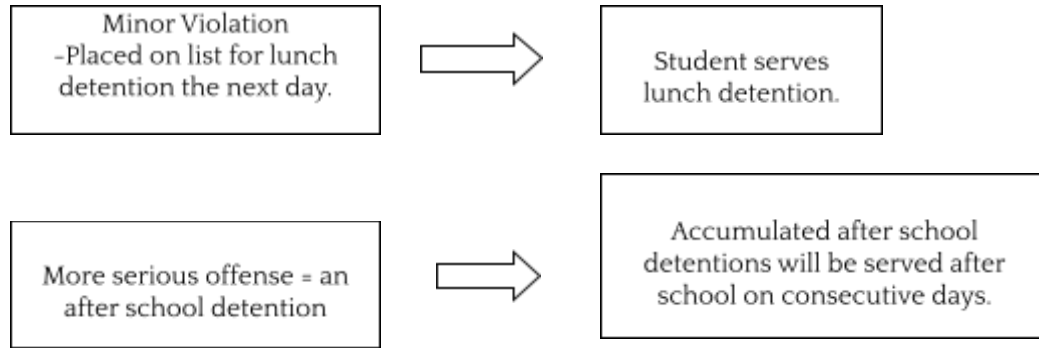
- 1st offense: "F" grade on assignment/referral to office/teacher contact home/warning
- 2nd offense: "F" grade on assignment/referral to office/in school or home suspension.  
Administration contact with parent/guardian
- 3rd offense: "F" grade on next grading period, referral to office/home suspension/Administration contact with parent/guardian.

# DISCIPLINE PROCEDURES

## Minor Offenses

1. Minor offenses will be handled by the classroom teacher.
2. If a student has been assigned a lunch detention, they will receive a pass and be required to serve lunch detention on that day.
3. A student may accrue more than one lunch detention, and must serve lunch detention each time his/her name is placed on the lunch detention list.
4. The school will notify parents of after-school detentions.
5. Students who accrue multiple hours of after-school detention will serve the hours accumulated during available detention sessions. Serving detention is not a choice. Students who do not serve their detention hours will be suspended from school for up to five days and placed on a Loss of Privilege list until their hours are served. Parents will be contacted to attend a Tier 2 Meeting ("Tier 2" meeting where a behavior contract will be developed and signed).

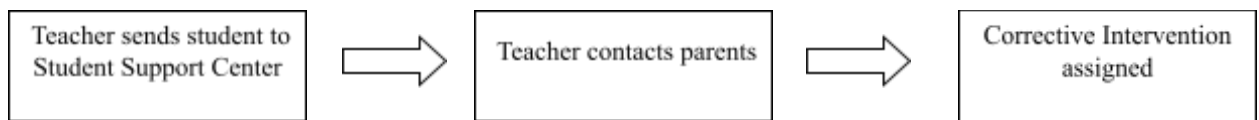
6.



\*Parents are responsible for providing transportation from after school detention.

### Class Suspensions

Because it is essential for teachers to be able to teach effectively, they may exercise the right to suspend students from their class. In the event that a student's behavior warrants removal from class, the student will be sent to the Student Support center.



\*\*\*Students who receive multiple class suspensions within a trimester will no longer qualify for "Class Suspensions". These students will be referred directly to the Vice Principal's office for Other Means of Correction, which could include home suspension.\*\*\*

### Office Suspensions

Certain discipline situations which violate the California State Education Code will automatically bypass the procedures noted above for minor violations and will be handled by administration (e.g., fighting, ditching, tobacco, defiance, possession of a knife or drugs / alcohol, etc.)

In order to encourage and promote good behavior, administration may place students on a Loss of Privilege list which will exclude them from certain school activities. (i.e., dances, class parties, field trips, etc.) Please refer to the Loss of Privilege section.

Any student on home suspension cannot attend any school function or to be on any Weaver Union School District campus before school, during school, or after school during the duration of the suspension.

### Situations That Can Lead to Suspension and Possible Expulsion

1. Causing or attempting to cause:
  - a. Injury to others (e.g., fighting, hitting, kicking, etc.)

**Note:** *An incident will be considered a mutual fight when two students engage in a physical altercation, regardless of who initiated the conflict. A student who allows him/herself to be provoked into fighting will be considered as guilty as the one who starts the fight.*
  - b. Robbery or extortion



- c. Damaging school or private property (e.g., vandalism, graffiti, etc.)
  - d. Stealing school or private property
  - e. Arson (setting fires)
  - f. Harassment/sexual harassment
- 2. Possession, sale, being under the influence of, and/or using:
  - a. Alcoholic beverages, intoxicants, and/or any controlled substance (drugs) or representing a liquid, substance, or material as a controlled substance, alcoholic beverage or intoxicant.
  - b. Tobacco or any product containing nicotine (e.g., cigars, cigarettes, snuff, etc.)
  - c. Drug paraphernalia (e.g., pipes, syringes, vape pens, cartridges, chargers, etc.)
- 3. Possession, sale, and/or using a firearm, knife, explosives, or any other dangerous objects (e.g., brass or "homemade" knuckles, lighters, matches, etc.)
- 4. Knowingly receiving stolen property or private property. Stealing or attempting to steal school property or private property, or knowingly receiving such property.
- 5. Committing an obscene act or engaging in profanity or vulgarity.
- 6. Disrupting school activities or otherwise willfully defied the valid authority of supervisors, teachers, administrators, school officials, or other school personnel engaged in the performance of their duties.
- 7. Pulling or setting off fire and smoke alarms (possible fines and law enforcement notification).
- 8. Repeated failure to come to class prepared to learn.

## **Bullying**

Weaver takes a no tolerance approach to bullying. This applies to physical, verbal, psychological, written, or electronic bullying at school or away from school. Parents must be aware that students referred to administration for bullying are subject to suspension from school.

If a student feels that he/she is in need of assistance to help with a conflict or problem, he/she can seek the support of one of our administrators or the counselor. All school adults are committed to providing a safe environment for all of our Weaver students. Students who observe bullying should report to the administration. Reports will be kept anonymous.

Bullying can take the following forms:

- 1. Verbal - This can be any of, but not limited to, the following forms:
  - a. Threats
  - b. Ridicule or harassment
  - c. Malicious gossip
- 2. Intimidation - Pushing, hitting, physical gestures that are of a threatening nature.
- 3. Electronic - Via texting, web-based social networks (Facebook, TikTok, Instagram, Snapchat, etc.)
- 4. Extortion - Using force or threat of injury to take something from someone else.

**Student Privilege** - student events (Rallies, Sports, Dances, Assemblies, Clubs, etc.)

**Student of the Month** - each month teachers choose students who emulate the WEAVER WAY. Each student receives an award and special treat for lunch. These are presented each month during our grade level Student of the Month assemblies.

**Behavior Attendance Grades (BAG) Trip** - Trimester 1 & 2 we celebrate the students who have the following:

1. Behavior - no detentions or suspensions (class, in house, out of school)
2. Attendance - 95% attendance, no tardies, 3 or less excused absences
3. Grades - 3.0 GPA or higher

**End of Year Grade Level Trips** - We invite all students who meet the following during the last trimester to purchase a ticket to attend our end of year trips:

1. Behavior - 0 suspensions (class, in house, out of school) during the last trimester; 3 or less Detentions
2. Attendance - 95% attendance with 10 class tardies or less
3. Grades - 2.0 GPA or higher

## **Loss of Privilege**

Students placed on Loss of Privilege are excluded from the following activities until they are removed from the list:

1. School dances
2. Sporting events
3. Assemblies
4. Extra-curricular and co-curricular activities (i.e., clubs, Academic Pentathlon, etc.)
5. Field Trips
6. Weaver Way Events/Celebrations

# TRANSPORTATION RULES

Parents may request by note that their children get off the bus at another location other than their regular stop. The note must be written and signed by the parent or guardian indicating where the student is to be let off. Notes must be signed by the principal/designee and given to the bus driver. **Phone calls must be made before noon for bus changes. Otherwise, all students who ride a bus to school must ride the bus home.**

## **Bus Rules**

The following rules are established to provide guidelines of expected behavior for all students riding a school bus: (To encourage proper behavior buses are equipped with video cameras.)

**Riding the bus is a courtesy that the district provides to students and families. Students can be suspended from the bus at any time they do not follow any of these rules.\***

1. Prior to the arrival of the bus, students are expected to respect the property of others and avoid all horseplay. **NO** bullying or fighting between students or parents at bus stops.
2. Upon arrival of the school bus, the students are to stand clear of the bus until it has made a complete stop.
3. All students shall sit facing the front of the bus and remain seated at all times.

4. No students shall board the school bus with any sharp objects (e.g., pencils, sticks, toys, etc.)
5. No unnecessary noise or commotion shall be permitted on the bus.
6. Students shall not use vulgar or profane language on the bus.
7. All students shall keep their hands to themselves.
8. Students are not to use their cell phones unless it's an emergency.
9. Students shall **not** eat/drink on the school bus (e.g., candy, seeds, gum, etc.)
10. Students shall not shoot, throw or leave any debris of any kind on the bus.
11. Students shall not deface or destroy the bus. Subject to a fine if damage is found.
12. **NO** glass containers or animals are to be carried on the bus.
13. Only school approved materials may be carried on the bus.
14. Students shall not smoke or light matches on the bus.
15. Students must bring notes from home authorized by the office if they are to ride a different bus or to go home with friends.
16. Students shall show respect towards other students and the driver while on the bus.
17. Upon leaving the bus, students shall **not** cross the street or highway to the rear of the bus and they are to go directly home.
18. Students must cross in front of the bus or be escorted by the driver at all times. No parents can escort their own child. (Vehicle Code §22112)
19. Parents picking up students have to be parked on the same side as the bus at none-escort stops.
20. Students riding on a school bus shall be under the authority of, and responsible directly to the driver of the bus. (H. P.H. 82.7 (6-10))

**We have the right to refuse service at any time if any of these rules are not followed.**

*\*Exceptions, with conditions, may be made on long field trips by the school district administration.*

## FOGGY DAYS

There will be times during the winter when fog will create a safety hazard for Weaver buses. When the fog becomes too thick for our buses to safely transport children to school, bus schedules will be changed to have the buses start later. At these times, buses will delay their departure time from the school site until the fog lifts enough to ensure safe travel of drivers and students. When the day is too foggy, the bus transportation supervisor will have the buses wait. We will contact the local radio stations so that they will broadcast this information to parents and students in the district. You will also receive an automated call home letting you know of this change. Please make sure to update us with your most current phone number so you can receive this message.

# RESTRICTED ITEMS

The following items will not be allowed at school and will only be returned to parents:

1. Electronic devices, including but not limited to radios, speakers, mp3 players, CD players, video games, iPods, collectibles such as baseball cards, Pokémon cards, permanent markers, gum, candy, sunflower seeds, or any other items that are not related to the educational process will be taken away and returned to a parent/guardian. Other than baseball gloves, students are to leave all other sports equipment at home. **Administration takes no responsibility for theft of confiscated items. All confiscated items must be picked up by parents or guardians of students.**
2. **Birthday balloons or bouquets, etc. are not allowed** in classrooms or on the playground. If brought to school, they will remain in the front office until the end of the day. Students may pick them up at the end of the school day, but **may not transport them on the bus. Birthday parties are not allowed on our campus**, cafeteria or classrooms. Any cakes or other food items brought to school will be kept in the office for parents to pick up. end of the school day. Students may pick them up at the end of the school day, but **may not transport them on the bus.**
3. Food delivery or lunch drop off (e.g., Doordash, UberEats, etc.) deliveries are not accepted for students. Fast food drop off is accepted when a parent eats with a student in a designated area.
4. No selling of outside food, candy, drinks (e.g., energy drinks, sodas, juice, etc.) and other items.
5. **Any drugs, drug paraphernalia, vape pens, weapons, knives, firearms and imitation firearms are not allowed on school campuses.** Possession of such prohibited items will result in suspension and or expulsion from school.

Weaver School is not responsible for the loss of theft of personal items. The school will no longer conduct extensive searches for lost or stolen personal items.

# CELL PHONE RESTRICTIONS

Cell phones will be allowed with the restriction that they remain out of sight and ***OFF*** (not on silent) during school hours, including the mornings and lunch breaks. Cell phones may be turned on only after the final release bell has rung. If a student chooses to break these rules, the phone will be confiscated, turned off, placed in an envelope labeled with the student's name and information to be returned to a parent/guardian. This rule extends to headphones of any kind. **Weaver Union School District will not carry responsibility for lost or stolen phones, headphones or other devices.** Parents can pick up/sign for electronic devices at the school office between 8:00 a.m. and 4:00 p.m. Please allow time at the end of the day for the teacher to deliver electronic devices to the Vice Principal's office.

**1st Offense:** Confiscated with student/Administrator restorative conference.

**2nd Offense:** Confiscated with family/Administrator restorative conference (Parent pick-up).

**3rd Offense:** Confiscated with cell phone contract/restrictions or loss of privilege.

# LOST AND FOUND ITEMS

Weaver Middle School maintains a lost and found deposit area in the school office. All items that are lost such as backpacks and clothing items are turned into the office and placed neatly in the lost and found area. **Please note that the lost and found area is emptied at the end of each Trimester. Most items are laundered and donated to charity. It is the responsibility of the student or parent to come and look for items when they are lost.** More valuable items such as phones and other items are kept in the office.

# SKATEBOARD/SCOOTERS/BIKES

Bicycles, scooters, and skateboards are not to be used on campus. If any student is in violation of this policy, he/she will have the item confiscated and a parent/guardian will be required to retrieve it from the front office. If these are a means of transportation for the student to and from school, he/she must pick it up and walk it to where he/she is keeping it during the duration of the school day. This area is located on the bike rack inside of the front entry gate. The skateboard rack is located in the front of the VP's office. The student will be able to lock up their skateboard with a lock from home. The school can also provide a loaner lock for the student to use during the day.

## PARENT INVOLVEMENT

### **Weaver English Learner Advisory Committee and School Site Council**

Weaver parents are encouraged to get involved in their children's education. Weaver has several parent committees which welcome parent involvement. The Weaver School Site Council and the Weaver English Learner Advisory Committee meet regularly to discuss school wide issues and the academic program at Weaver for all students including second-language learners. If you would like to be involved in the Weaver English Learner Advisory Committee ("ELAC") or School Site Council ("SSC"), please contact the Weaver office.

### **Band Boosters**

If you would like to be a part of the band booster program, please contact our band director, Ashley Shine.

### **ParentSquare**

Weaver staff members often use the ParentSquare app as a fast and easy way to communicate with parents through email and text. Please make sure your email and cell phone numbers are up to date in the office to ensure you receive these messages. The ParentSquare app is available for download on both Apple and Android platforms.

### **Aeries Grading Portal**

Weaver students **and** parents have access to their students Aeries Grading Portal

## DUAL MAILING

Parents may request progress reports and report cards be mailed to more than one parent. Please contact the Weaver Office to arrange for a dual mailing.

## ENGLISH LANGUAGE DEVELOPMENT ("ELD")

Students who are English Learners ("EL") will be assessed annually using the California English Language Development Test ("CELDT"), and placed in academically appropriate programs staffed by qualified

instructors.

## FAMILY SUPPORT TEAM (“FST”)

Students who are having difficulty academically, with attendance, or behavior may be referred by their counselor, teacher or administration to the Family Support Team (“FST”). The FST will arrange a meeting with the parent/guardian/family and the student to discuss any concerns and determine next steps for the student. The FST will also offer any available support to the parents and follow up with both students and parents as needed. The FST is chaired by our school counselor.

## SCHOOL BASED COUNSELING SERVICES

Weaver Middle School employs full time, credentialed school counselors. Our counselors are available to assist students with personal, social, academic, emotional, and crisis counseling. This service may be group or individual. Our counselors collaborate with outside agencies to link families to services, as well as bring services on campus to benefit all Weaver students.

### Parent Informed Consent

The School Counseling Department at Weaver Middle School is committed to providing the foundation for our students to reach their full potential. School counselors have implemented a program that supports students through this important developmental period. The program identifies students' academic and social/emotional needs, as well as provides any necessary interventions that help remove barriers to learning. School counselors will help students develop skills and behaviors critical for academic achievement. The knowledge, attitudes and skills students acquire during these years build the foundation for future success.

School counseling is considered a regular educational service. Parents/Guardians or school staff may refer students for counseling. Students may also request counseling themselves without parental consent. However, school counselors will not see students in a group setting without first receiving parent permission. In addition, school counselors are not able to provide long-term mental health therapeutic services to students. If a student is in need of mental health therapeutic services, school counselors can provide information about community resources. As a parent or guardian you have the right to decline certain educational services such as school counseling. If you do not want your child to be seen individually or in a group setting, please contact the school Principal.

Please contact the counseling department with any questions or concerns.

## PROMOTION / RETENTION / GRADUATION

### Promotion

Students must have a C- grade average or higher in English Language Arts or Math to move to the next grade.

### Retention

When a student is recommended for retention or identified as being at-risk for retention, the superintendent or designee shall provide opportunities for remedial instruction to assist the student in overcoming his/her academic deficiencies. Such opportunities may include but are not limited to tutorial

programs, after school programs, summer school programs and/or the establishment of a student study team.

## Graduation

In order for a student to graduate from Weaver Middle School, the following criteria must be met:

1. Students must meet promotional guidelines. Students must have a C- grade average or higher in English Language Arts or Math.
2. He/she has a combined grade point average of 1.67 or better during the seventh and eighth grade school years, or he/she scores a grade point average of 2.0 or better during the eighth grade school year.
3. He/she must not receive more than five (5) incidents of suspension during their eighth grade school year.
4. Students who received fifteen (15) hours of detention or less during their seventh grade year must not exceed more than fifteen (15) hours of detention during their eighth grade year.

## Gold Tassel

Each year during the graduation ceremony, Weaver Middle School recognizes students who have attained high academic standing. These students receive an honors medallion and a gold tassel to be worn during the graduation ceremony. These students also receive special seating during the ceremony. **Students wishing to receive this recognition must end the year with a cumulative GPA of 3.5 for the 6th, 7th, and 8th grade year.**

## Eighth Grade Trip

The annual eighth grade trip is a longstanding tradition at Weaver Middle School. Students must be aware that this activity may be denied to students for academic or disciplinary reasons. Parents and students must also be aware that the cost of the trip is the parents' responsibility. Money for the trip will be refunded if they become ineligible to go on trips. **If a student is transported by their parents to the eighth grade trip because they were ineligible to go, they will lose the right to walk in the graduation ceremony. (refer to page 27 for more information)**

**Please note – There are three things often associated with *graduation*, and sometimes confusingly so:**

1. Graduation – A “certificate” stating you have completed the appropriate coursework with the required grades for an 8<sup>th</sup> grade “Graduation Certificate” and doing so within the guidelines of the discipline code as listed for graduation. This does not guarantee any of the events “associated” with graduation.
2. Graduation Events – Those students who have earned a Graduation Certificate without an appeal, AND are in good standing with Weaver’s Discipline Code are eligible for “events” associated with graduation (i.e., field trip, dance, etc.)
3. Promotion – Promotion is going to the next grade with or without a certificate of completion.
4. Any students suspended during the last 3 weeks of school may lose all graduation privileges.

## Graduation requirements for special education students or students with 504

Special education and 504 students will be promoted each year based on reasonable progress toward goals established in their Individualized Education Plan (IEP) or 504 plan. Other graduation guidelines for discipline will apply.



# WEAVER UNION SCHOOL DISTRICT / WEAVER MIDDLE SCHOOL

## MENTAL HEALTH AWARENESS AND PREVENTION

### ANNUAL NOTIFICATION

As a parent or caregiver, you want the best for your children or other dependents. You may be concerned or have questions about certain behaviors they exhibit and how to ensure they get help.

#### What to Look For

It is important to be aware of the warning signs that your child may be struggling. You can play a critical role in knowing when your child may need help.

- Feeling very sad or withdrawn for more than two weeks
- Seriously trying to harm or kill himself or herself, or making plans to do so
- Experiencing sudden overwhelming fear for no reason, sometimes with a racing heart or fast breathing
- Getting in many fights or wanting to hurt others
- Showing severe out-of-control behavior that can hurt oneself or others
- Not eating, throwing up, or using laxatives to make himself or herself lose weight
- Having intense worries or fears that get in the way of daily activities
- Experiencing extreme difficulty controlling behavior, putting himself or herself in physical danger or causing problems in school
- Using drugs or alcohol repeatedly
- Having severe mood swings that cause problems in relationships
- Showing drastic changes in behavior or personality
- Loss of a loved one
- Divorce or separation of their parents
- Any major transition—new home, new school, etc.
- Traumatic life experiences, like living through a natural disaster
- Teasing or bullying
- Difficulties in school or with classmates

#### How to Talk About Mental Health

Do you need help starting a conversation with your child about mental health? Try leading with these questions. Make sure you actively listen to your child's response.

- Can you tell me more about what is happening? How are you feeling?
- Have you had feelings like this in the past?
- Sometimes you need to talk to an adult about your feelings. I'm here to listen. How can I help you feel better?
- Do you feel like you want to talk to someone else about your problem?
- I'm worried about your safety. Can you tell me if you have thoughts about harming yourself or others?

#### Getting Help for Your Child

Consult with the school counselor, school nurse, a mental health provider, or another health care professional. Call 911 for immediate assistance if your child is harming themselves or others.

## What Does “Mental Health” Mean?

Mental health includes our emotional, psychological, and social well-being. It affects how we think, feel, and act. It also helps determine how we handle stress, relate to others, and make choices. Mental health is important at every stage of life, from childhood and adolescence through adulthood.

Are you having trouble doing the things you like to do or need to do because of how you feel—like going to school, work or hanging out with friends?

Are you having a rough day? Have you been feeling down for a while? Everyone goes through tough times, and no matter how long you've had something on your mind, it's important that you talk to someone about it.

Talk to your parents or a trusted adult if you experience any of these things:

- Can't eat or sleep
- Can't perform daily tasks like going to school
- Don't want to hang out with your friends or family
- Don't want to do things you usually enjoy
- Fight a lot with family and friends
- Feel like you can't control your emotions and it's affecting your relationships with your family and friends
- Have low or no energy
- Feel hopeless
- Feel numb or like nothing matters
- Can't stop thinking about certain things or memories
- Feel confused, forgetful, edgy, angry, upset, worried, or scared
- Want to harm yourself or others
- Have random aches and pains
- Smoke, drink, or use drugs
- Hear voices

## Where Can I Get Help?

You are not alone. Lots of people have been where you are or are there right now. But there are lots of people who want to help you.

If you are thinking of harming yourself get help immediately. You can call 911 or the National Suicide Prevention Line at 1-800-273-8255

Another way to get help is by talking to someone you trust. This could be a parent, family member, your school counselor, school nurse or another trusted adult.

*[REMAINDER OF PAGE THIS INTENTIONALLY LEFT BLANK]*

# Dress Code Policy

Parents please review the changes in the dress code policy and discuss the changes with your child. Please sign and date the end of this form and return the form to school.

## Student Dress and Grooming

To promote a safe, secure and comfortable environment conducive to an effective learning environment, the Weaver Union School District has established a student dress code. Any apparel, hairstyle, or cosmetic which creates a safety concern, or draws undue attention to the wearer, or tends to distract from the educational process, **even if not specifically mentioned below**, will not be permitted.

In cooperation with teachers, students and parents/guardians, the principal or designee will regularly review district regulations and may establish additional school rules governing dress and grooming.

## General Statements

1. All clothing must fit. (Husky sizes for husky children only, slim sizes for children who are slim, etc.) We permit no sagging of pants or oversized shirts.
2. Clothing must be kept clean, mended, unaltered, properly hemmed and sewed (not stapled, pinned, taped, rubber banded, holes etc.)
3. Students may wear clothing with sports teams, but may not wear jerseys unless it is on a permitted jersey day.
4. Brand name clothing, other attire, or layered clothing that may identify or associate students with gangs is not permitted.
5. Students are not to wear any garment that is solid red or blue **including undershirts and tank tops**. Official Weaver School apparel and patriotic emblems will be allowed.
6. Clothing, jewelry, notebooks, backpacks, and other accessories will be free of writing, pictures, or any other insignia which are crude, vulgar, depict violence or weapons, profane, obscene, libelous, slanderous, or sexually suggestive. Clothing, jewelry, notebooks, and other accessories that advocate racial or religious prejudice, weapons or violence, the use of tobacco, drugs, or alcohol, or other unlawful acts are prohibited.
7. Gang-related apparel or paraphernalia, including symbols, emblems, insignia, or other gang identifiers, may not be worn or displayed. This rule prohibits the presence of any apparel jewelry, accessory, notebook, or any manner of grooming which by virtue of its color, arrangement, trademark, or other attribute, denotes membership in or affiliation with gangs.
8. Clothing will not be worn inside out.
9. **No pajamas or sleepwear are allowed at school.** There will be designated days such as “pajama day” where this is allowed.
10. No price tags are to be left on articles worn by students.
11. Attire that may be used as a weapon may not be worn (e.g., steel-toed boots, chains, wallets with chains or items with spikes or studs, etc.)

12. No garment or combination of garments will be allowed which exposes underwear or areas of the body usually covered by underwear.
13. Bandanas will not be worn or displayed (i.e., pockets, backpacks, jackets).
14. Students may not bring extra clothing to school except at the request of a teacher or administrator. The student's clothing request will relate to the need for extra clothing for physical education, team sports, or a special school activity. Examples of a special school activity that may require extra clothing would be dressing up for Halloween, Christmas, etc., or it may include activities such as the following: a school play, the music program, a special activity related to the school social studies, science, or the reading curriculum in the classroom, etc.
15. No outside food allowed on campus (see Restricted Items on page 24)

Students who show any affiliation with gangs, or exhibit "look-alike" dress or behavior, as determined by the administration, will face additional and more stringent color and dress limitations. Gang affiliation could be determined by, and not limited to, the following acts: gang signs, gang writing, tagging, gang related derogatory remarks. Possession of any items which may identify an individual with a gang such as photographs, drawings containing gang symbols, etc will cause a student to be subject to more stringent dress code requirements. (Simplified: Don't even "act" like you are a gang member or administration will put limitations on you, for your safety and the safety of others.)

### **Pants, Shorts, and Belts**

Pants **not** allowed include: pants not worn at the waist, "see through" pants and pants that are oversized. **Ripped or torn jeans are permitted but they must be worn with leggings.** If overalls are worn, all straps must be secured. Pant length shall not be so excessive as to create a potential hazard (i.e., tripping due to pants catching on shoe). Belts and belt buckles cannot have initials or numbers on them. Belts cannot hang down past the buckle. Gang related web belts (blue or red) with or without punched out metal buckles. Permissible shorts are defined as those that are no shorter than mid-thigh, hemmed, and not form-fitting. All bike shorts (spandex), gym shorts, frayed shorts, "see through" shorts, or shorts with holes are unacceptable. Bike shorts may be worn under skirts or regular shorts. All shorts must be worn at the waist.

**Please note: The principal or designee reserves the right to determine whether clothing is appropriate for school.**

### **Skirts**

Skirts and culottes are acceptable as long as they extend to mid-thigh.

### **Shirts**

Shirts **not** allowed include: tank tops, razor back tank tops, bare midriff (e.g., tube tops, half shirts, crop tops, halter tops), strapless, backless, muscle tank shirts, beach wear, see-through shirts, net shirts, worn-out, torn, or ragged shirts, off-the-shoulder blouses, or any shirt that at rest, during, or after an activity, will expose the skin at the top or bottom of the student's shirt, or shorts. **Shirts must have a minimum 3" width shoulder sleeve/strap of which will be measured with a ruler. Undergarments may not be exposed.**

## **Jackets**

Jackets must not be altered and jackets must not be solid red or blue.

## **Head Coverings**

1. Caps / hats must not be solid red or blue.
2. Caps / hats may not display a single letter on it (i.e., N, S)
3. Caps must not be altered. The only writing allowed on the cap must have been put on when the cap was manufactured.
4. Caps must be worn with the bill forward unless you are playing catcher in a game representing the school.
5. No caps are to be worn inside any building except during physical education.
6. No caps are to be worn at indoor student dances, assemblies, and special events.
7. No "hair nets" except when serving in the cafeteria.
8. No ski masks allowed.
9. Hoods are not allowed to be worn in the classroom or cafeteria.
10. Hooded sweatshirts when used to conceal identification are not permitted due to safety reasons.
11. Knit caps are allowed only during cold (winter) weather outside only (classrooms, cafeteria, library and all other buildings are not allowed.)

## **Shoes**

Shoes must be worn at all times. Shoes or sandals must have backs or straps at the heels. No flip-flops, slides, or "sock-like" footwear is allowed. The shoe must remain as manufactured with no alterations. Appropriate footwear is required for PE.

## **Undergarments**

Undergarments must be worn in a fashion so that they are not visible.

## **Dark Glasses**

Dark glasses shall not be worn indoors unless a documented, health related problem exists. The health problem must be established with a written note from a qualified doctor.

## **Extra Curricular Dress**

The principal, staff, students and parent/guardians at each school may establish reasonable dress and grooming regulations for times when students are engaged in extracurricular or other special school activities.

### **Accountability Matrix for Dress Code**

**1st Dress Code Infraction:** Student/Administrator restorative conference, parent notification, and review of the Dress Code policy

**2nd Dress Code Infraction:** Family/Administrator restorative conference, lunch reflection, check-in/check-out initiated.

**3rd Dress Code Infraction:** Family/Administrator restorative conference, after school reflection, other means of correction such as a Behavior Contract.

*[REMAINDER OF PAGE THIS INTENTIONALLY LEFT BLANK]*

*[THIS PAGE INTENTIONALLY LEFT BLANK]*

Dear Parents/Guardians,

Thank you for reading / discussing this handbook with your child. Please return the bottom of this page with your signature and your child's signature to the School office indicating you have read this handbook.

Together we can do the best for your child's education!

Sincerely,

Elias Villa

Mr. Villa, Principal



Please return this form ***within 30 days*** to the School Office.

### Student / Family Handbook Agreement

Please check the boxes that apply

- ☐ I have read the Weaver Middle School Student/Family Handbook for the 2023-2024 school year and discussed it with my child.
- ☐ I have reviewed the Dress Code Policy with my child and understand that violations of the dress code will result in disciplinary action.
- ☐ I have reviewed the Student, Parent/Guardian, Teacher, and Administrator Rights and Responsibilities and understand our rights.
- ☐ I have reviewed the District Technology Agreement and School Site Cell Phone Policy with my child and understand that violations of these agreements will result in disciplinary action.
- ☐ I have reviewed the Discipline Flow Chart with my child.

Student's Name (Please Print): \_\_\_\_\_

Grade: \_\_\_\_\_ Student ID #: \_\_\_\_\_

Signed: \_\_\_\_\_  
(Student)

Date: \_\_\_\_\_

Parent / Guardian Name (Please Print): \_\_\_\_\_

Signed: \_\_\_\_\_  
(Parent / Gaurdian)

Date: \_\_\_\_\_