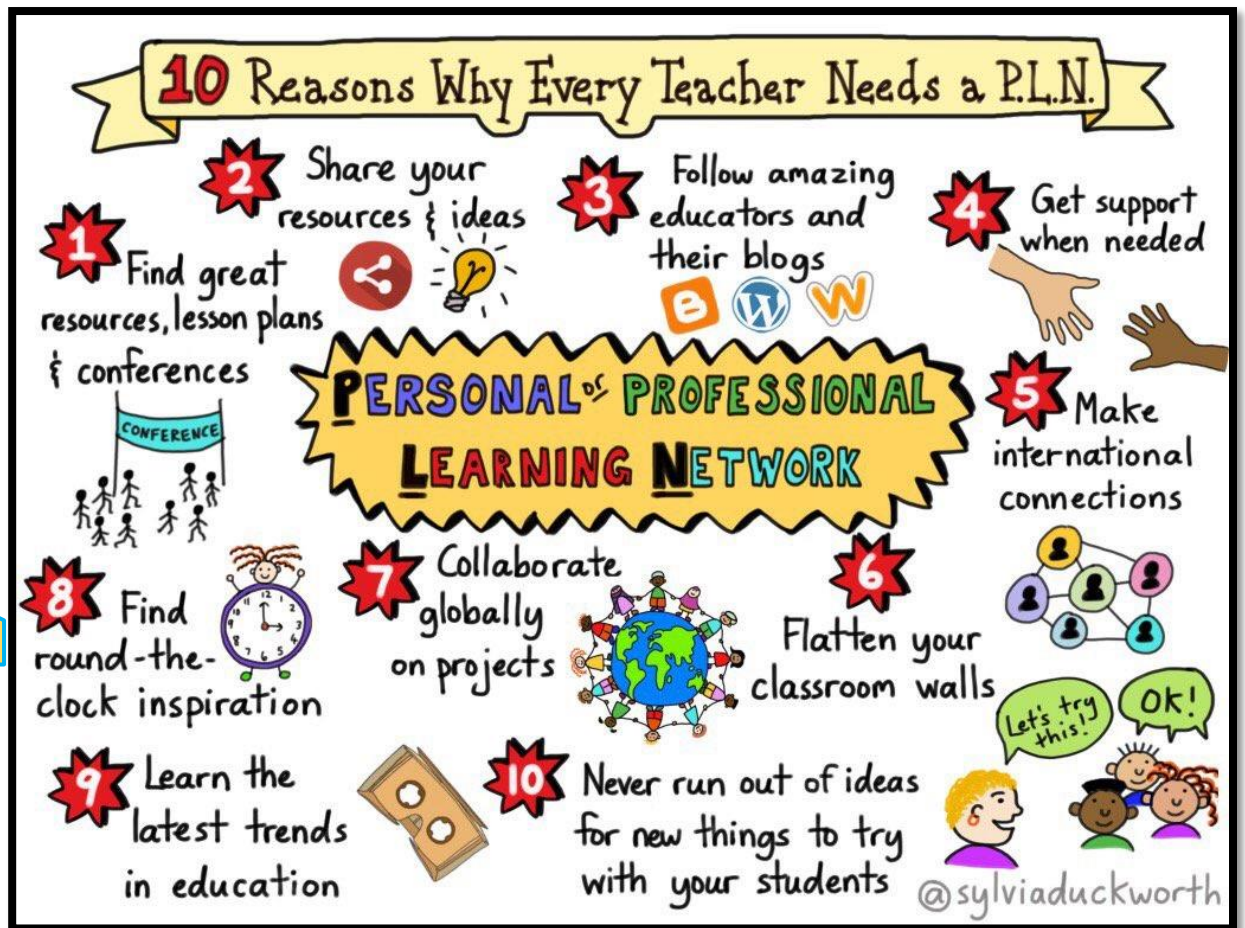


# MY PLN



Although it is not really certain who coined the term PLN originally, in the infancy of the internet in the late 90s, the term started appearing. Daniel R. Tobin was asked how he came up with the term **Personal Learning Network**, specifically, if he coined the term in relation to a particular industry or field. He shared this:

*"It came from my own experience."*

Tobin went on to say ([click the quote above for the full article](#))

"As I was thinking about how I had learned to do the various jobs I had over the course of my career, I realized that I had built an extensive network of people who had helped me learn. These included managers and colleagues and people I had met while doing research for my books, speaking at conferences, attending workshops, etc. I realized that what I had learned from my PLN was greater and more important than what I had learned from my formal education."

*Find your people!*

*Many teachers active online make the comment that they've learned a great deal from their PLN*



## Twitter Cheat Sheet edublogs



**RETWEET (RT):** A Tweet you share publicly with your followers. Adding your own comment is optional.



**REPLY:** Respond to another person's tweet publicly by clicking the reply icon under a tweet.



**MENTION:** Type the @ symbol before a username when addressing someone.



### TWEET

An update with up to 280 characters and possibly media (images, GIF, video).



**HASHTAG:** Used to index keywords or topics on Twitter. Hashtags use the # symbol.



**FOLLOWING:** Subscribing to someone's tweets and seeing them in your home timeline.



**DIRECT MESSAGE (DM):** A private message sent to someone who is following you (or a group of people).