

I. CALL TO ORDER

The Beavercreek Board of Education met on Thursday, October 15, 2020, for the Beavercreek Board of Education regular meeting. Board President Mrs. Rigano called the meeting to order at 6:30 p.m.

II. ROLL CALL

The following members were present for the Board of Education:

Chris Stein
Krista Hunt
Dennis Morrison
Jo Ann Rigano
Gene Taylor

A quorum was declared with five members present.

III. PLEDGE OF ALLEGIANCE

Ms. Rigano invited everyone to join in the saying of the Pledge of Allegiance to the American Flag.

IV. APPROVAL OF AGENDA AS PRESENTED - RESOLUTION #2020-65

Mr. Taylor made a motion to approve the agenda as presented.

Ms. Hunt seconded the motion.

ROLL CALL: Gene Taylor, aye; Krista Hunt; Dennis Morrison, aye; Chris Stein, aye; aye Jo Ann Rigano; aye.

Motion carried 5-0

V. PRESENTATIONS

- A Update Regarding Youth Truth – Presenter, Assistant Superintendent of Curriculum and Special Services,
Dr. Bobbie Fiori

SEE NEXT PAGE(S)



School Climate Survey: Youth Truth

Agenda



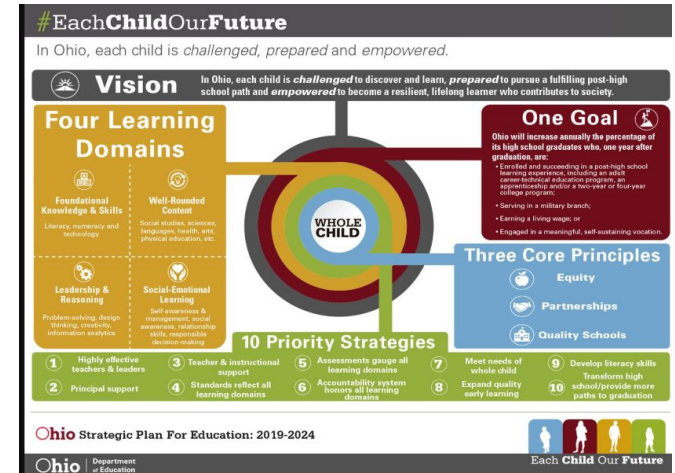
- Why do we need a school climate survey?
 - Ohio Department of Education Strategic Plan
 - ODE PBIS Requirement
 - Restart Plan
 - Beavercreek City Schools Strategic Plan
 - Board Policies
 - HOPES Project
 - School Climate surveys
- Why YouthTruth survey?

Ohio's Strategic Plan for Education

Partners identified the plan's multi-faceted components based on potential impact on student success. The **whole child** is at the center of the plan. The state-level **vision** provides an aspirational guide for students, parents, partners and the education system.

Whole Child - 4 Learning Domains:

- Foundation Knowledge and Skills
- Well-Rounded Content
- Social Emotional Learning
- Leadership and Reasoning



Positive Behavior Intervention Supports



- In effort to meet the needs of the whole child, ODE developed rules, policy, and legislation requiring districts to implement positive behavior intervention and supports (PBIS) on a system-wide basis.
- PBIS is a framework that guides school teams in the selection, integration and implementation of evidence-based practices for improving academic, social and behavior outcomes for all students.

Positive Behavior Intervention Supports



The PBIS process emphasizes four integrated elements:

- **Data** for decision making.
- Evidence based **interventions and practices** that support varying students needs (multi-tiered).
- **Systems** that efficiently and effectively support implementation of these practices.
- Continual progress monitoring to ensure **outcomes** are met.

PBIS Requirements



- Administrative commitment & involvement
- Team-based structures
- 3-5 schoolwide expectations
- Systematic instruction
- Reinforcement of desired behaviors
- Correction of behavior errors
- Data-based decision making
- Multi-tiered systems of support
- Maintain culturally responsive practices

PBIS Climate Survey



School Climate Survey: Middle/High

Please answer all of the questions or your answers won't be recorded, but you can mark "I prefer not to answer" if you don't want to answer a question about you.

Demographics

What is your gender identity?

- ☐ Female ☐ Male ☐ Non-binary, transgender or other
☐ I prefer not to answer

Which of the following best describes you?

- ☐ Heterosexual (straight) ☐ Gay or Lesbian ☐ Bisexual
☐ I prefer not to answer

What is your ethnicity?

- ☐ Hispanic or Latino/a ☐ Not Hispanic or Latino/a
☐ I prefer not to answer

What is your race? (mark all that apply)

- ☐ American Indian or Alaskan Native
☐ Asian
☐ Black or African American
☐ Native Hawaiian or Pacific Islander
☐ White
☐ I prefer not to answer

Beyond that, is there another ethnic group with which you identify?

- ☐ Ethnic Group: _____
☐ I prefer not to answer.

What grade are you in?

- ☐ 6 ☐ 7 ☐ 8 ☐ 9 ☐ 10 ☐ 11 ☐ 12 ☐ I prefer not to answer.

Survey Questions

Reset and Restart Education, ODE



- Emphasizes the importance of data informed approach to continuous improvement.
- Recommends that schools and districts review student data regularly to adjust instruction and nonacademic interventions and supports.
- School climate (including staff and student perception data) data is one of the recommended types of local assessment data.

Board Policies



2260 - NONDISCRIMINATION AND ACCESS TO EQUAL EDUCATIONAL OPPORTUNITY

Any form of discrimination or harassment can be devastating to an individual's academic progress, social relationship and/or personal sense of self-worth. As such, the Board of Education does not discriminate on the basis of race, color, national origin, sex (including sexual orientation or transgender identity), disability, age (except as authorized by law), religion, military status, ancestry, or genetic information (collectively, "Protected Classes") in its educational programs or activities.

Board Policies



5517 - ANTI-HARASSMENT

General Policy Statement

The Board will vigorously enforce its prohibition against discriminatory harassment based on race, color, national origin, sex (including sexual orientation and transgender identity), disability, age (except as authorized by law), religion, ancestry, or genetic information (collectively, “Protected Classes”) that are protected by Federal civil rights laws (hereinafter referred to as unlawful harassment), and encourages those within the School District community as well as third parties, who feel aggrieved to seek assistance to rectify such problems.

Beavercreek City Schools' Strategic Plan



Belief Statements

- We believe all learners will meet their full potential and positively impact their community as productive citizens.
- We believe in fostering a culture of innovative and inclusive learning through diverse and dynamic programs that impact all students.
- We believe in a welcoming, safe, and supportive learning environment for all students, staff, and the community.
- We believe a student-centered education requires a transparent, collaborative approach with all stakeholders.

Beavercreek City Schools' Strategic Plan



Goal 1: Student Success - We will foster a culture of innovative and inclusive learning through diverse and dynamic opportunities that impact all students.

Objective 1.2: We will evaluate the needs of students to identify barriers to learning and devise a prevention and intervention plan.

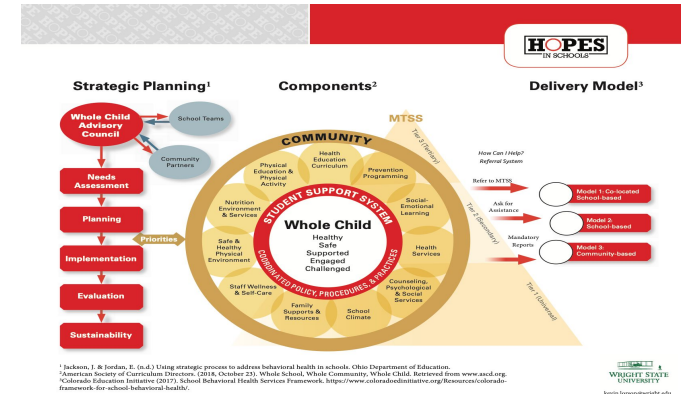
Counselor Experiences with Barriers to Learning



- Safe and supportive environment for all students.
- Impacts on school attendance.
- Effects on mental health.
- Impact on wider school climate and culture.

HOPES Project

- At the center of Ohio's Strategic Plan for Education is the Whole Child. Under the facilitation of Wright State University and the Greene County ESC, Beavercreek City Schools took part in the HOPES in Schools Project in 2019-2020.
- Whole Child Advisory Council participated in a strategic planning process to identify student needs and build student supports to address those needs.



HOPES Project



- Through the HOPES in Schools Project, the SHAPE (School Health Assessment and Performance Evaluation System) Quality Assessment was completed. Areas of need identified included:
 - Assess student mental health strengths and needs.
 - Monitor fidelity of service and supports.
 - Ensure implementation of early intervention services and supports fit strengths, needs, cultural, and linguistic considerations.
- The Whole Child Advisory Team determined the need for a School Climate survey.

What is a School Climate Survey?



- School climate measurement involves a comprehensive assessment of student engagement, school safety, and the learning environment.
- The measurement of school climate provides educators with the necessary data to identify school needs, set goals, choose programmatic interventions, and track progress toward improvement.
- Data also can identify areas where students, staff, and parents view climate in similar or dissimilar ways.

Importance of School Climate



- Positive school climate integrated with Social Emotional Learning improves school safety and decreases bullying. (University of Maryland).
- Positive school climate is associated with academic achievement, violence prevention, students' healthy development, and teacher retention (Teacher College Record).
- School climate impacts learning, academic achievement, motivation, safety, absenteeism, group cohesion, mutual trust, and feelings of connectedness and attachment to school (Fleming et al., 2005; Devine & Cohen, 2007).

Importance of School Climate



- School climate impacts youth social, emotional, and psychological development (Center for Social and Emotional Education, 2009).
- Positive climate allows greater equality in educational opportunities, decrease socioeconomic inequalities, and enable more social mobility for students (AERA).
- Studies have repeatedly demonstrated the influence of student perceptions on goal adoption and consequently on achievement – particularly students' perceptions of their own engagement and motivation and the quality of their relationships with their teachers (Strobel, 2010).

Why Use A School Climate Survey?



- Adheres to ODE's Strategic Plan by focusing on the Whole Child.
- Gain knowledge about school needs.
- Ensure data driven decisions for programming and supports.
- Monitor progress and impact of programming and supports.
- Create a Positive School Climate.
- Best practice used in districts throughout the state.

YouthTruth Survey



- Validated survey instrument
- Research based
- 1.5 million students surveyed.
- Anonymity:
 - Does not collect student names, contact information, or IDs.
 - Survey administration platform, Qualtric, does not allow for the identification of individual students.
- National comparative context and comparisons to other schools with similar characteristics.
- Surveys a wide-range of school climate topics.
- Timely and user friendly data reports.

YouthTruth Survey Questions



YouthTruth is a research-based survey instrument used to gain student perceptions to enhance student outcomes. The web-based surveys ask age and reading-level appropriate questions on the student's overall school experience. Surveys were administered to all students in the district grades 3-12. Survey questions encompass the following topics.

- Engagement, Rigor
- Culture, Relationships, Belonging and Peer Collaboration
- Social Emotional Learning
- Bullying
- Student motivation & grit
- Distance learning
- Instructional Methods (elementary only)
- High School Preparation (middle only)
- Drop out risk (secondary only)
- College and Career Readiness (secondary only)
- Emotional & mental health (secondary only)
- Diversity, equality, & inclusion (secondary only)

YouthTruth Survey



- Researched YouthTruth in November 2019.
- Whole Child Counsel decided to contract with YouthTruth in February 2020.
- Student survey set to be administered in April 2020 - mandatory shut down prevented this from happening.
- Survey postponed to Fall of 2020.
- August 14th, 2020 YouthTruth directed to exclude the sexual orientation demographic question from the middle school survey.
- Friday, October 9th we notified that the sexual orientation demographic question was included in the middle school survey.
- YouthTruth was contacted immediately and the question was removed.

YouthTruth Survey Results



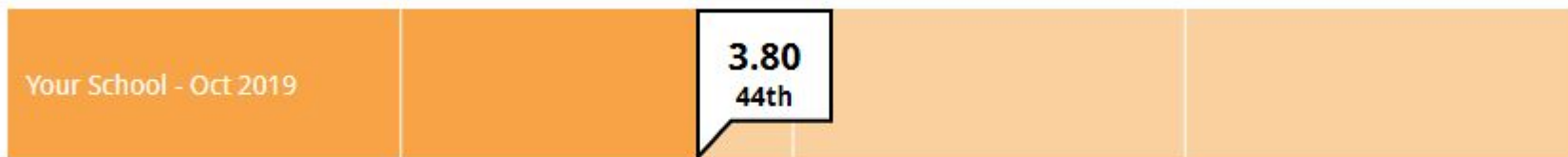
- The survey is a school climate survey and not a universal screener; therefore, the data received is not and cannot be connected to individual students.
- The data will aid in informing and developing programming, professional development, and district improvement processes.
- The district goal is to continue to utilize YouthTruth surveys to analyze and assess district programming efforts.

When I'm feeling upset, stressed, or having problems...**I know someone outside of school who I can talk to about it**

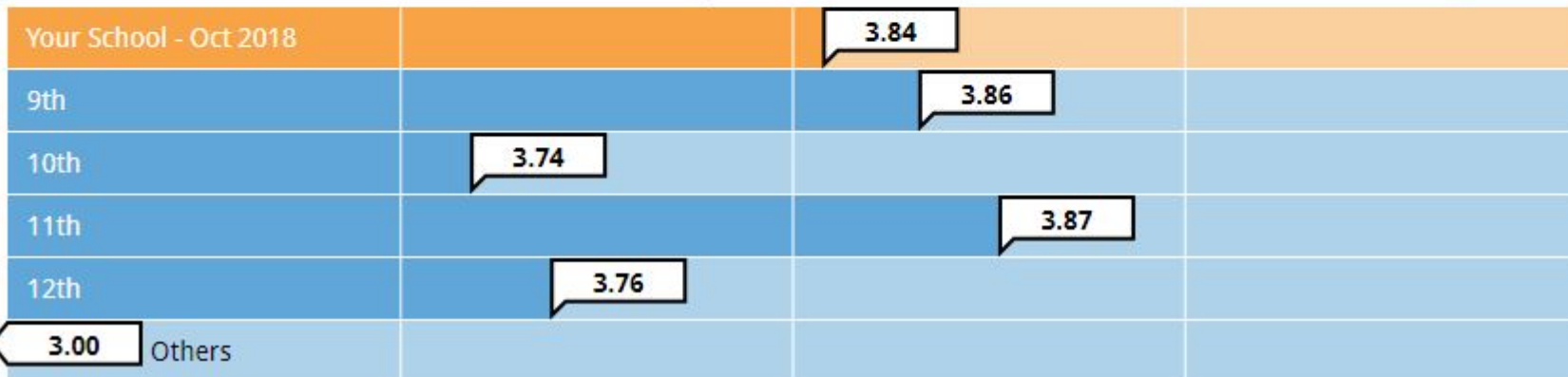
1 = Strongly disagree 3 = Neither agree nor disagree 5 = Strongly agree



0th (3.28) 25th (3.71) 50th (3.83) 75th (3.96) 100th (4.50)

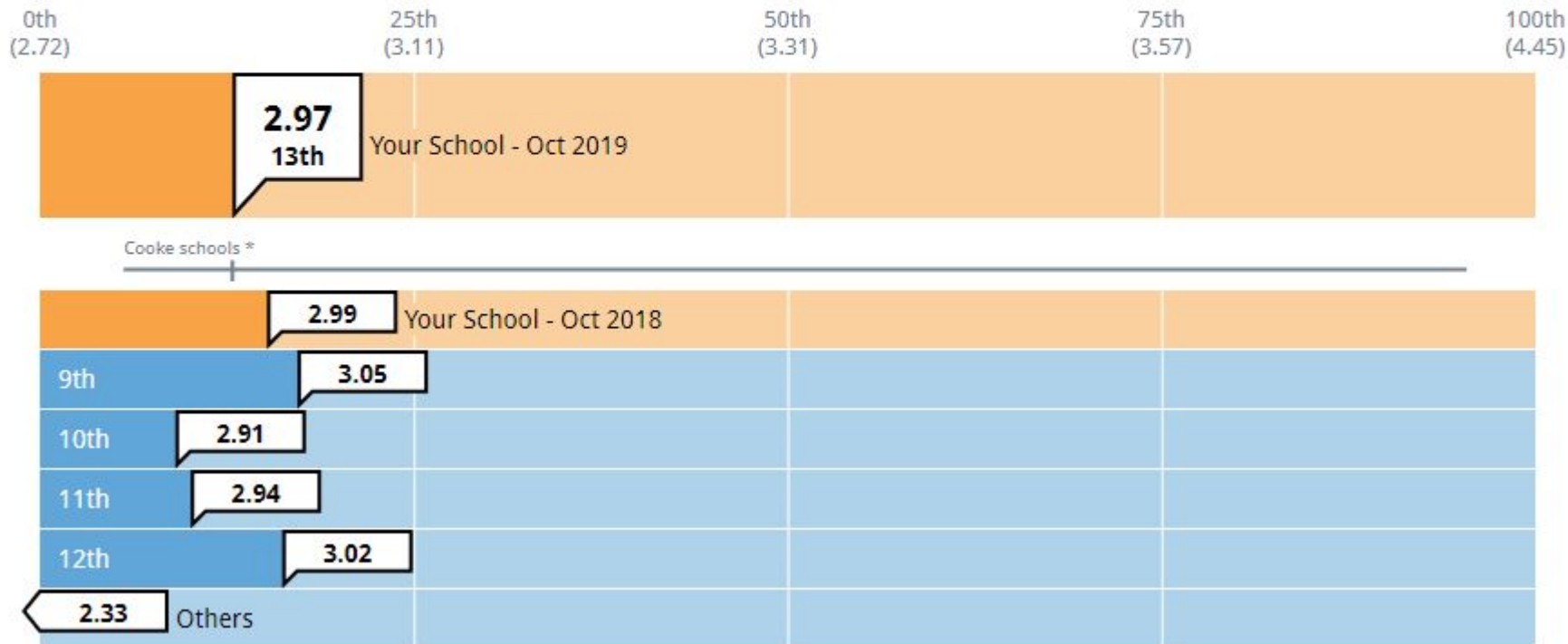


Cooke schools *



When I'm feeling upset, stressed, or having problems...**There is an adult in school who I can talk to about it**

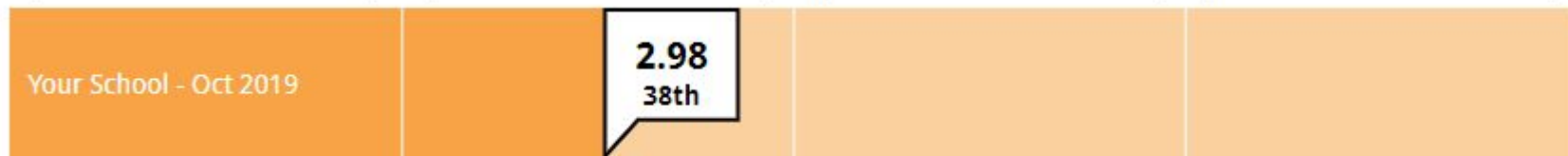
1 = Strongly disagree 3 = Neither agree nor disagree 5 = Strongly agree



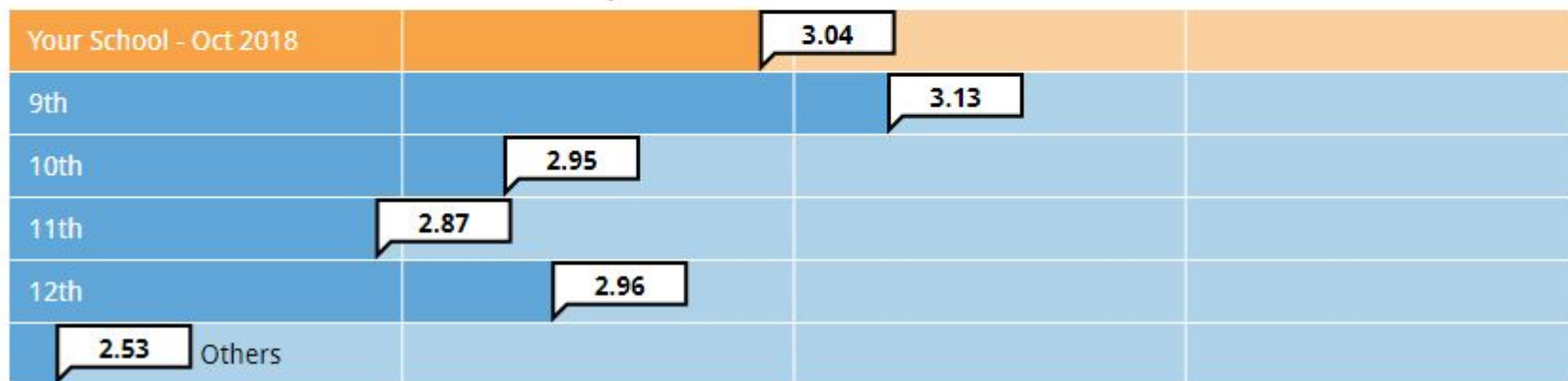
There are programs or services at my school that can help me

1 = Strongly disagree 3 = Neither agree nor disagree 5 = Strongly agree

0th (2.43) 25th (2.90) 50th (3.10) 75th (3.35) 100th (4.21)



Cooke schools *



Cohort: Cooke schools * ▼

Past results: ☒ On ☐ Off

Subgroup: Grade Level ▼

VI. QUESTIONS AND/OR COMMENTS FROM THE PUBLIC

None.

VII. APPROVAL OF MEETINGS HELD – RESOLUTION #2020-66

Mr. Morrison made a motion to approve the minutes for the September 2020 meeting

A. Minutes for September 2020 Board of Education Meetings:

September 17, 2020 Regular Board of Education Meeting

Mr. Stein seconded the motion.

ROLL CALL: Dennis Morrison, aye; Chris Stein, aye; Gene Taylor, aye; Krista Hunt, aye; Jo Ann Rigano, aye.

Motion carried 5-0

VIII. ITEMS FOR BOARD DISCUSSION

B. Online Student Calendar – Presenter, Assistant Superintendent of Curriculum and Special Services, Dr. Bobbie Fiori

SEE NEXT PAGE(S)



2020-2021 Pupil ONLINE LEARNING

School Calendar

Adjusted due to COVID-19

August 2020							September 2020							October 2020						
Sun	Mon	Tue	Wed	Thu	Fri	Sat	Sun	Mon	Tue	Wed	Thu	Fri	Sat	Sun	Mon	Tue	Wed	Thu	Fri	Sat
						1			1	2	3	4	5					1	2	3
2	3	4	5	6	7	8	6	7	8	9	10	11	12	4	5	6	7	8	9	10
9	10	11	12	13	14	15	13	14	15	16	17	18	19	11	12	13	14	15	16	17
16	17	18	19	20	21	22	20	21	22	23	24	25	26	18	19	20	21	22	23	24
23	24	25	26	27	28	29	27	28	29	30				25	26	27	28	29	30	31
30	31																			
November 2020							December 2020							January 2021						
Sun	Mon	Tue	Wed	Thu	Fri	Sat	Sun	Mon	Tue	Wed	Thu	Fri	Sat	Sun	Mon	Tue	Wed	Thu	Fri	Sat
1	2	3	4	5	6	7			1	2	3	4	5						1	2
8	9	10	11	12	13	14	6	7	8	9	10	11	12	3	4	5	6	7	8	9
15	16	17	18	19	20	21	13	14	15	16	17	18	19	10	11	12	13	14	15	16
22	23	24	25	26	27	28	20	21	22	23	24	25	26	17	18	19	20	21	22	23
29	30						27	28	29	30	31			24	25	26	27	28	29	30
														31						
February 2021							March 2021							April 2021						
Sun	Mon	Tue	Wed	Thu	Fri	Sat	Sun	Mon	Tue	Wed	Thu	Fri	Sat	Sun	Mon	Tue	Wed	Thu	Fri	Sat
	1	2	3	4	5	6		1	2	3	4	5	6					1	2	3
7	8	9	10	11	12	13	7	8	9	10	11	12	13	4	5	6	7	8	9	10
14	15	16	17	18	19	20	14	15	16	17	18	19	20	11	12	13	14	15	16	17
21	22	23	24	25	26	27	21	22	23	24	25	26	27	18	19	20	21	22	23	24
28							28	29	30	31				25	26	27	28	29	30	
May 2021							June 2021							Legend						
Sun	Mon	Tue	Wed	Thu	Fri	Sat	Sun	Mon	Tue	Wed	Thu	Fri	Sat	First Day – All Students						
						1			1	2	3	4	5	No School: Professional Development						
2	3	4	5	6	7	8	6	7	8	9	10	11	12	No School: All Offices Closed						
9	10	11	12	13	14	15	13	14	15	16	17	18	19	No School						
16	17	18	19	20	21	22	20	21	22	23	24	25	26	No School: Parent Teacher Conferences Exchange Day						
23	☆	25	26	27	28	29	27	28	29	30				End of Grading Period - Early Dismissal						
30	31													No School: Staff Work and PD Days						
☆ = GRADUATION: MAY 24, 2021														Staggered Start Days						

Student Days

1st Semester = 87 days; 2nd Semester = 89 days: Total Days = 176If more than seven (7) calamity days occur, make up days, beginning with the eighth (8th) day, will begin on June 1, 2021.

41

IX. FINANCIAL REPORTS REQUEST – RESOLUTION #2020-67

Beavercreek City Schools' Treasurer, Penny Rucker, presented the following items for approval.

Mr. Stein made a motion to consider the recommendation of the Treasurer to approve the financial reports item A-B.

A September 2020 Financial Reports

SEE NEXT PAGE(S)

Beavercreek Board of Education Meeting October 15, 2020
 Beavercreek City Schools
 Monthly Analysis of Revenues and Expenses
 September - Fiscal Year 2021

	Monthly Estimate	Monthly Actual	Monthly Difference	Year to Date Estimate	Year to Date Actual	Year to Date Difference
Beginning Cash Balance	45,336,753	45,221,359	-115,394	21,100,667	21,100,667	0

Receipts:

From Local Sources

							% of Total
Real Estate Tax	0	0	0	31,982,000	31,433,662	-548,338	75.68%
Personal Tangible	7,928	0	-7,928	988,658	1,198,860	210,202	2.89%
Proceeds from Sale of Notes	0	0	0	0	0	0	0.00%
Other Local	750,000	1,297,071	547,071	1,550,000	1,782,918	232,918	4.29%

From State Sources

Foundation Program	1,203,448	1,144,792	-58,656	3,522,310	3,481,822	-40,488	8.38%
Rollback and Homestead/TPP Reimb	0	223	223	2,898,494	3,033,182	134,688	7.30%

From Federal Sources

Public Law 874	0	0	0	0	0	0	0.00%
Other Federal	0	0	0	0	0	0	0.00%

Non-Operating Receipts	51,000	2,186	-48,814	153,000	603,185	450,185	1.45%
------------------------	--------	-------	---------	---------	---------	---------	-------

Total Receipts	2,012,376	2,444,272	431,896	41,094,462	41,533,629	439,167	100.00%	1.07%
Receipts Plus Cash Balance	47,349,129	47,665,631	316,502	62,195,129	62,634,296	439,167		

Expenses

Salaries and Wages	4,600,000	4,341,490	-258,510	13,200,000	13,034,943	-165,057	58.05%	
Fringe Benefits	1,656,000	1,744,637	88,637	4,958,000	4,758,522	-199,478	21.19%	36.51%
Purchased Services	900,000	557,398	-342,602	2,700,000	2,503,029	-196,971	11.15%	
Materials, Supplies and Books	175,000	130,189	-44,811	513,000	429,246	-83,754	1.91%	
Capital Outlay	13,000	385,899	372,899	39,000	414,514	375,514	1.85%	
Repayment of Debt	0	0	0	0	0	0	0.00%	
Other Non-Operating Expenditures	0	0	0	0	0	0	0.00%	
Other (Governmental Expenditures)	390,000	325,065	-64,935	1,170,000	1,313,089	143,089	5.85%	

Total Expenditures	7,734,000	7,484,678	-249,322	22,580,000	22,453,343	-126,657		-0.56%
---------------------------	------------------	------------------	-----------------	-------------------	-------------------	-----------------	--	--------

Ending Cash Balance	39,615,129	40,180,953	565,824	39,615,129	40,180,953	565,824	100.00%	
----------------------------	-------------------	-------------------	----------------	-------------------	-------------------	----------------	---------	--

Months elapsed in FY	3
Total Projected Expenditures	\$98,175,730
Spent to Date	\$22,453,343
% Spent	22.87%
% of FY Elapsed	25.00%

Beavercreek City Schools

Monthly Financial Reports – September 2020

**Financial Re-Cap for:
Board of Education Meeting
October 15, 2020**



Executive Summary – Financial Reporting

For the Month of September 2020

Overview

- ✓ This report is based on the Five Year Forecast that was approved by the Board of Education in May 2020. As the Forecast is transitioned into budgets for the district, we will be monitoring our expenditure levels reflected in the financial reports.
- ✓ We project the amounts monthly for budget purposes and monitor monthly activity against those projections to determine if we are in alignment with the projected expenditures. As we proceed throughout the year, we will see if our projections hold and we will update our forecast accordingly.
- ✓ Currently, we are spending in alignment with our forecast as we start the fiscal year.

Executive Summary – Financial Reporting

For the Month of September 2020

Overview

- ✓ The following slides will present the Revenue and Expenditure line items that correspond to the Monthly Analysis of Revenues and Expenditures – the monthly report I have included in your board packet.
- ✓ Each month we will look at:
 - ❖ Month-To-Date: Budget vs. Actual Revenues and Expenditures
 - ❖ Fiscal-To-Date: Budget vs. Actual Revenues and Expenditures

Executive Summary – Financial Reporting

For the Month of September 2020

Local Receipts

- ✓ **Real Estate Taxes** collected fiscal year-to-date total \$31,433,662 which is in alignment with fiscal year projected receipts.
- ✓ Our current tax base is stable and growing.

Executive Summary – Financial Reporting
For the Month of September 2020
Receipts

	<u>Monthly Estimate</u>	<u>Monthly Actual</u>	<u>Monthly Difference</u>
<u>Real Estate Tax</u>	\$0	\$0	\$0
	<u>Year to Date Estimate</u>	<u>Year to Date Actual</u>	<u>Year to Date Difference</u>
	\$31,982,000	\$31,433,662	\$-548,338

Executive Summary – Financial Reporting

For the Month of September 2020

State Funding Receipts

- ✓ **State Foundation** funding of \$1,144,792 was collected this month. To date, we are \$-40,488 under projections on our collections.
- ✓ We will continue to monitor these changes in funding closely.

Executive Summary – Financial Reporting
For the Month of September 2020
Receipts

	<u>Monthly Estimate</u>	<u>Monthly Actual</u>	<u>Monthly Difference</u>
<u>State Foundation</u>	\$1,203,448	\$1,144,792	\$-58,656
	<u>Year to Date Estimate</u>	<u>Year to Date Actual</u>	<u>Year to Date Difference</u>
	\$3,522,310	\$3,481,822	\$-40,488

Executive Summary – Financial Reporting

For the Month of September 2020

Revenues:

- ✓ Our non-operating receipts are comprised of FY20 advances in for \$555,978. Typically, grants are awaiting federal/state reimbursements at year-end.
- ✓ This practice of advancing funds to/from the general fund at year-end/year-beginning is in compliance with Ohio Revised Code and is audited annually to be sure proper accounting is used.
- ✓ We are in compliance.

Executive Summary – Financial Reporting

For the Month of September 2020

Expenditures:

- ✓ **Salaries and wages** as of September are coming in under projections by approximately \$-165,057.
- ✓ **Fringe benefits** as of the month of September came in under projections by approximately \$-199,478.
- ✓ These expenditures will ebb and flow from month-to-month as we monitor them to be sure they are in compliance with the five year forecast.

Executive Summary – Financial Reporting
For the Month of September 2020
Expenditures

	<u>Monthly Estimate</u>	<u>Monthly Actual</u>	<u>Monthly Difference</u>
<u>Salaries & wages</u>	\$4,600,000	\$4,341,490	\$-258,510
	<u>Year to Date Estimate</u>	<u>Year to Date Actual</u>	<u>Year to Date Difference</u>
	\$13,200,000	\$13,034,943	\$-165,057

Executive Summary – Financial Reporting
For the Month of September 2020
Expenditures

	<u>Monthly Estimate</u>	<u>Monthly Actual</u>	<u>Monthly Difference</u>
<u>Fringe Benefits</u>	\$1,656,000	\$1,744,637	\$88,637
	<u>Year to Date Estimate</u>	<u>Year to Date Actual</u>	<u>Year to Date Difference</u>
	\$4,958,000	\$4,758,522	\$-199,478

Executive Summary – Financial Reporting

For the Month of September 2020

Expenditures:

- ✓ **Purchased Services** costs of \$557,398 this month-to-date came in under projections of \$-196,971 fiscal-to-date.
 - [The charter and voucher payments, which are strictly pass-thru payments, comprised approximately \$252 thousand (45%) of the purchased services costs in September...
- ✓ **Materials, Supplies and Books** to date came in under projections by about \$-83,754.
- ✓ **Capital Outlay** to date came in over projections by about \$375,514.

Executive Summary – Financial Reporting
For the Month of September 2020
Expenditures

	<u>Monthly Estimate</u>	<u>Monthly Actual</u>	<u>Monthly Difference</u>
<u>Purchased Svcs.</u>	\$900,000	\$557,398	\$-342,602
	<u>Year to Date Estimate</u>	<u>Year to Date Actual</u>	<u>Year to Date Difference</u>
	\$2,700,000	\$2,503,029	\$-196,971

Executive Summary – Financial Reporting
For the Month of September 2020
Expenditures

	<u>Monthly Estimate</u>	<u>Monthly Actual</u>	<u>Monthly Difference</u>
<u>Materials, Supplies</u>	\$175,000	\$130,189	\$-44,811
	<u>Year to Date Estimate</u>	<u>Year to Date Actual</u>	<u>Year to Date Difference</u>
	\$513,000	\$429,246	\$-83,754

Executive Summary – Financial Reporting
For the Month of September 2020
Expenditures

	<u>Monthly Estimate</u>	<u>Monthly Actual</u>	<u>Monthly Difference</u>
<u>Capital Outlay</u>	\$13,000	\$385,899	\$372,899
	<u>Year to Date Estimate</u>	<u>Year to Date Actual</u>	<u>Year to Date Difference</u>
	\$39,000	\$414,514	\$375,514

Executive Summary – Financial Reporting

For the Month of September 2020

Expenditures:

- ✓ Expenditures are under projections by about \$-126,657 or -0.56%.
- ✓ We continue monitoring these expenditures to determine that our spending plan is still in proper alignment.

Executive Summary – Financial Reporting
For the Month of September 2020
Expenditures

	<u>Monthly Estimate</u>	<u>Monthly Actual</u>	<u>Monthly Difference</u>
<u>Total Expenditures</u>	\$7,734,000	\$7,484,678	\$-249,322
	<u>Year to Date Estimate</u>	<u>Year to Date Actual</u>	<u>Year to Date Difference</u>
	\$22,580,000	\$22,453,343	\$-126,657

Executive Summary – Financial Reporting

For the Month of September 2020

Expenditures:

✓ As of September, we are in alignment with budgeted expenditures, 25.00% of the fiscal year has elapsed and we have spent 22.87% of the annual budget. Our cash-flow is positive and we expect to end the year within budget.

✓ We did have \$555,978 in advances to close the books as of June 30, 2020. We made these advances from General Fund to the various grant funds awaiting reimbursement from state and federal sources. Since the grants are reimbursing, we must advance funds at year-end so they are not in a deficit. Advances are not required to be budgeted per Ohio Law.

Executive Summary – Financial Reporting
For the Month of September 2020
“Bottom-Line” Cash Balance:

<u>Ending Cash Balance</u>	<u>Monthly Estimate</u>	<u>Monthly Actual</u>	<u>Monthly Difference</u>
	\$39,615,129	\$40,180,953	\$565,824
	<u>Year to Date Estimate</u>	<u>Year to Date Actual</u>	<u>Year to Date Difference</u>
	\$39,615,129	\$40,180,953	\$565,824



Variance						0.00
----------	--	--	--	--	--	------

		BEAVERCREEK CITY SCHOOL DISTRICT				
		INVESTMENT INCOME				
			September			
			2020			
<u>INVESTMENT INCOME:</u>						
<u>Bank</u>				<u>Amount</u>		<u>Receipt Code</u>
US Bank - Meeder - MM			Variable	0.00		001-1410-0000
US Bank - Meeder - Investment			Variable	7,173.97		001-1410-0000
US Bank - Meeder - Prem./Disc.			Variable	0.00		001-1410-0000
US Bank - Meeder - Gain/(Loss)			Variable	0.00		001-1410-0000
Chase - High Yield Savings			0.05%	0.62		001-1410-0000
Star Ohio			0.20%	6,883.06		001-1410-0000
Star Plus			0.25%	0.00		001-1410-0000
PNC Bank - Business Money Market			0.03%	1.73		001-1410-0000
TOTAL INVESTMENT INCOME				\$ 14,059.38		
<u>INVESTMENT INCOME DISTRIBUTION:</u>						
<u>Fund</u>		<u>Fund Balance</u>	<u>Rate</u>	<u>Amount</u>		<u>Receipt Code</u>
Food Service Fund		0.00	0.05%	0.00		006-1410-0000
Dayton Islamic		76,916.63	0.05%	3.20		401-1410-9520
St. Luke		57,631.47	0.05%	2.40		401-1410-9620
Carroll HS		102,783.14	0.05%	4.28		401-1410-9720
Bright Beginnings		3,488.78	0.05%	0.15		401-1410-9920
				\$ 10.03		
General Fund Interest Distribution				\$ (10.03)		001-1410-0000



Beavercreek City School District Portfolio Comparison

Account number 57 00 0010 0 00

6/30/2020

Duration Diversification

	PERCENTAGE	DOLLAR AMOUNT
0-1 year	78%	\$9,940,563
1-2 years	22%	\$2,739,343
2-3 years	0%	\$0
3-4 years	0%	\$0
4-5 years	0%	\$0
		\$12,679,906

Portfolio Statistics

Weighted Average Maturity	0.44 years
Weighted Average Yield	1.44%
Annualized Interest Income of Securities	\$182,591

Portfolio Allocation

■ US Government Agencies	22%
■ FDIC-Insured	34%
■ Other	44%



9/30/2020

Duration Diversification

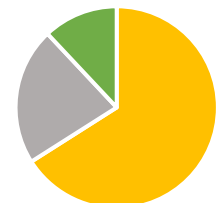
	PERCENTAGE	DOLLAR AMOUNT
0-1 year	100%	\$12,711,961
1-2 years	0%	\$0
2-3 years	0%	\$0
3-4 years	0%	\$0
4-5 years	0%	\$0
		\$12,711,961

Portfolio Statistics

Weighted Average Maturity	0.40 years
Weighted Average Yield	0.74%
Annualized Interest Income of Securities	\$94,608

Portfolio Allocation

■ US Government Agencies	66%
■ FDIC-Insured	22%
■ Other	12%



Yield and interest income information is annualized. All yield information is shown gross of any advisory and custody fees and is based on yield to maturity at cost. Days to maturity is calculated based on the difference between maturity date and report date. Total days to maturity is calculated based on weighting each security's days to maturity to the total securities or assets. Past performance is not a guarantee of future results.

For the Account of: *BEAVERCREEK CITY SCHOOL DISTRICT*

Account Number: *57 00 0010 0 00*

Date: *SEPTEMBER 30, 2020*



MEEDER
INVESTMENT MANAGEMENT

WE ENCOURAGE YOU TO REVIEW THIS STATEMENT WITH THE STATEMENT YOU RECEIVE
FROM THE QUALIFIED CUSTODIAN. ADVISORY SERVICES PROVIDED BY MEEDER PUBLIC
FUNDS, REGISTERED INVESTMENT ADVISER.

PENNY RUCKER
BEAVERCREEK CITY SCHOOL DISTRICT
3040 KEMP RD
BEAVERCREEK OH 45431

For the Account of: **BEAVERCREEK CITY SCHOOL DISTRICT**
MEEDER
 INVESTMENT MANAGEMENT

Account Number: 57 00 0010 0 00

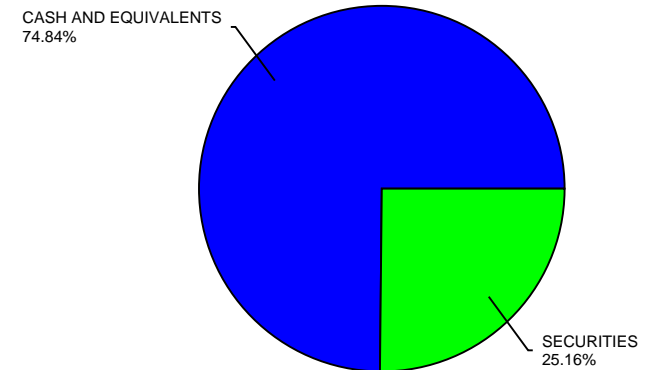
Date: SEPTEMBER 1, 2020 – SEPTEMBER 30, 2020

Account Summary

Asset Allocation (portfolio assets)

Portfolio Summary

Portfolio Assets	Value on AUG 31, 2020	Value on SEP 30, 2020	Est. Ann Income	% Total Assets
CASH AND EQUIVALENTS	43,784,045.90	37,206,033.81	74,025.39	74.84
SECURITIES	5,923,363.66	12,509,442.00	80,586.89	25.16
TOTAL ASSETS	49,707,409.56	49,715,475.81	154,612.28	



Cash Activity Summary

	Credits	Debits	YTD
SECURITIES PURCHASED	.00	-6,838,005.24	-6,838,005.24
SECURITIES SOLD & REDEEMD	247,000.00	.00	3,056,000.00
DEPOSITS & WITHDRAWALS	.00	-1,063.88	17,996,808.45
DIVIDENDS	7,187.13	.00	23,375.46
INTEREST	6,869.90	.00	22,779.11
WITHHOLDING	.00	.00	.00
OTHER ACTIVITY	.00	.00	.00

INCOME

This Period	YTD
14,057.03	46,154.57

Realized Gain/Loss Summary

	This Period	YTD
SHORT-TERM	.00	11,842.20
LONG-TERM	.00	.00

For the Account of: *BEAVERCREEK CITY SCHOOL DISTRICT*
MEEDER
 INVESTMENT MANAGEMENT

Account Number: 57 00 0010 0 00

Date: SEPTEMBER 1, 2020 – SEPTEMBER 30, 2020

Portfolio Assets Detail

CASH AND EQUIVALENTS

Description	Shares	Date Acquired	Total Cost	Current Share Price	Current Mkt Value	% of Portfolio	Unrealized Gain/Loss	Est. Ann Income	Yield at Cost
CASH AND EQUIVALENTS									
FGZXX – FIRST AMERICAN GOVT OBLIGATIONS FUND (31846V567)	257,782.90	09/30/2020	257,782.90	1.000	257,782.90	.52	.00	128.89	0.05
STAR OHIO (00001CASH)	36,948,245.45	09/30/2020	36,948,245.45	1.000	36,948,245.45	74.32	.00	73,896.49	0.20
STAR PLUS – TIER 1 (00002CASH)	5.46	09/30/2020	5.46	1.000	5.46	.00	.00	.01	0.25
TOTAL CASH AND EQUIVALENTS			37,206,033.81		37,206,033.81		.00	74,025.39	.20
TOTAL CASH AND EQUIVALENTS			37,206,033.81		37,206,033.81		.00	74,025.39	.20

SECURITIES

Description	Shares	Date Acquired	Total Cost	Current Share Price	Current Mkt Value	% of Portfolio	Unrealized Gain/Loss	Est. Ann Income	Yield at Cost
MATURITY (0–5 YRS)									
FHLB 0.00% 11/25/20 (313384Q85)	2,000,000.00	09/09/2020	1,999,556.66	99.989	1,999,780.00	4.02	223.34	443.42	0.11
FHLB 0.00% 12/03/20 (313384R84)	3,640,000.00	09/09/2020	3,639,054.58	99.984	3,639,417.60	7.32	363.02	945.64	0.11
MUFG BANK LTD CP 12/03/20 (62479LM36)	600,000.00	09/03/2020	599,790.00	99.974	599,844.00	1.21	54.00	210.07	0.14
TOYOTA MOTOR CP 12/21/20 (89233GMM5)	600,000.00	09/03/2020	599,604.00	99.962	599,772.00	1.21	168.00	396.26	0.22
FFCB 2.15% 12/23/20 (3133EJAD1)	795,000.00	04/11/2019	791,613.30	100.463	798,680.85	1.61	7,067.55	17,092.50	2.41

For the Account of: *BEAVERCREEK CITY SCHOOL DISTRICT*
MEEDER
 INVESTMENT MANAGEMENT

Account Number: 57 00 0010 0 00

Date: SEPTEMBER 1, 2020 – SEPTEMBER 30, 2020

Portfolio Assets Detail

SECURITIES

Description	Shares	Date Acquired	Total Cost	Current Share Price	Current Mkt Value	% of Portfolio	Unrealized Gain/Loss	Est. Ann Income	Yield at Cost
SEACOAST NATIONAL BANK 1.35% 12/31/20 (81171AES5)	247,000.00	03/25/2020	246,987.65	100.330	247,815.10	.50	827.45	3,334.50	1.36
ENTERPRISE BANK/PA 0.75% 03/12/21 (29367RLG9)	100,000.00	03/06/2020	100,000.00	100.303	100,303.00	.20	303.00	750.00	0.75
AMERICAN EXPR NATL BK 1.25% 03/31/21 (02589AB35)	246,000.00	03/25/2020	245,950.80	100.596	247,466.16	.50	1,515.36	3,075.00	1.27
BMO HARRIS BANK NA 1.25% 3/31/21 (05581W6M2)	246,000.00	03/25/2020	245,950.80	100.621	247,527.66	.50	1,576.86	3,075.00	1.32
PROVIDENCE BANK/ROCKY MT 1.05% 06/25/21 (743738CE4)	249,000.00	03/03/2020	248,937.75	100.715	250,780.35	.50	1,842.60	2,614.50	1.07
FNMA 1.40% 06/30/21 (3136G3UK9)	1,000,000.00	10/02/2019	997,390.00	100.934	1,009,340.00	2.03	11,950.00	14,000.00	1.55
BANK OF NEW ENGLAND 0.70% 07/02/21 (06426KBN7)	249,000.00	03/05/2020	248,962.65	100.469	250,167.81	.50	1,205.16	1,743.00	0.71
FNMA 1.50% 07/21/21 (3136G3VK8)	1,000,000.00	10/02/2019	999,250.00	101.079	1,010,790.00	2.03	11,540.00	15,000.00	1.54
FF&C BK 2.00% 07/30/21 (32014LAA8)	249,000.00	07/22/2019	248,813.25	101.598	252,979.02	.51	4,165.77	4,980.00	2.04
PREFERRED BANK LA CALIF 1.00% 09/20/21 (740367KA4)	249,000.00	03/03/2020	248,937.75	100.889	251,213.61	.51	2,275.86	2,490.00	1.02

For the Account of: *BEAVERCREEK CITY SCHOOL DISTRICT*
MEEDER
 INVESTMENT MANAGEMENT

Account Number: 57 00 0010 0 00

Date: SEPTEMBER 1, 2020 – SEPTEMBER 30, 2020

Portfolio Assets Detail

SECURITIES

Description	Shares	Date Acquired	Total Cost	Current Share Price	Current Mkt Value	% of Portfolio	Unrealized Gain/Loss	Est. Ann Income	Yield at Cost
BMW BANK NORTH AMERICA 1.10% 09/27/21 (05580AVS0)	248,000.00	03/18/2020	247,752.00	101.008	250,499.84	.50	2,747.84	2,728.00	1.17
CIT BANK NA 1.00% 09/27/21 (12556LBL9)	248,000.00	03/06/2020	247,938.00	100.909	250,254.32	.50	2,316.32	2,480.00	1.02
CELTIC BANK 1.05% 09/30/21 (15118RUN5)	249,000.00	03/18/2020	248,875.50	100.966	251,405.34	.51	2,529.84	2,614.50	1.08
CONNECTONE BK 1.05% 9/30/21 (20786ACZ6)	249,000.00	03/19/2020	248,813.25	100.966	251,405.34	.50	2,592.09	2,614.50	1.10
TOTAL MATURITY (0–5 YRS)			12,454,177.94		12,509,442.00		55,264.06	80,586.89	.74
TOTAL SECURITIES			12,454,177.94		12,509,442.00		55,264.06	80,586.89	.74
TOTAL ASSETS			49,660,211.75		49,715,475.81		55,264.06	154,612.28	.33

For the Account of: *BEAVERCREEK CITY SCHOOL DISTRICT*
MEEDER
 INVESTMENT MANAGEMENT

Account Number: 57 00 0010 0 00

Date: From SEPTEMBER 01, 2020 through SEPTEMBER 30, 2020

Statement of Transactions

Date		Total Cash	Investment Cost Basis
	INTEREST		
09/02/2020	INTEREST RECEIVED BANK OF NEW ENGLAND 0.70% 07/02/21	148.04	
09/14/2020	INTEREST RECEIVED ENTERPRISE BANK/PA 0.75% 03/12/21	63.70	
09/21/2020	INTEREST RECEIVED PREFERRED BANK LA CALIF 1.00% 09/20/21	211.48	
09/23/2020	INTEREST RECEIVED BARCLAYS 2.20% 09/23/20	2,739.33	
09/25/2020	INTEREST RECEIVED PROVIDENCE BANK/ROCKY MT 1.05% 06/25/21	222.05	
09/28/2020	INTEREST RECEIVED BMW BANK NORTH AMERICA 1.10% 09/27/21	1,375.21	
09/28/2020	INTEREST RECEIVED CIT BANK NA 1.00% 09/27/21	1,250.19	
09/30/2020	INTEREST RECEIVED CELTIC BANK 1.05% 09/30/21	214.89	
09/30/2020	INTEREST RECEIVED CONNECTONE BK 1.05% 9/30/21	222.05	
09/30/2020	INTEREST RECEIVED FF&C BK 2.00% 07/30/21	422.96	
	TOTAL INTEREST	6,869.90	0.00

For the Account of: *BEAVERCREEK CITY SCHOOL DISTRICT*
MEEDER
 INVESTMENT MANAGEMENT

Account Number: 57 00 0010 0 00

Date: From SEPTEMBER 01, 2020 through SEPTEMBER 30, 2020

Statement of Transactions

Date		Total Cash	Investment Cost Basis
ORDINARY DIVIDENDS			
09/01/2020	DIVIDEND RECEIVED FGZXX – FIRST AMERICAN GOVT OBLIGATIONS FUND	304.07	
09/30/2020	DIVIDEND RECEIVED STAR OHIO	6,883.06	
	TOTAL ORDINARY DIVIDENDS	7,187.13	0.00
NET PURCHASES AND SALES OF ASSETS			
09/02/2020	PURCHASE MONEY MARKET FGZXX – FIRST AMERICAN GOVT OBLIGATIONS FUND	–452.11	452.11
09/04/2020	REDEEM MONEY MARKET FGZXX – FIRST AMERICAN GOVT OBLIGATIONS FUND	1,199,394.00	–1,199,394.00
09/04/2020	PURCHASE MUFG BANK LTD CP 12/03/20	–599,790.00	599,790.00
09/04/2020	PURCHASE TOYOTA MOTOR CP 12/21/20	–599,604.00	599,604.00
09/09/2020	REDEEM MONEY MARKET FGZXX – FIRST AMERICAN GOVT OBLIGATIONS FUND	3,639,054.58	–3,639,054.58
09/09/2020	PURCHASE \$3640000 PAR FHLB 0.00% 12/03/20	–3,639,054.58	3,639,054.58
09/10/2020	REDEEM MONEY MARKET FGZXX – FIRST AMERICAN GOVT OBLIGATIONS FUND	2,000,514.16	–2,000,514.16
09/10/2020	PURCHASE \$2000000 PAR FHLB 0.00% 11/25/20	–1,999,556.66	1,999,556.66

For the Account of: **BEAVERCREEK CITY SCHOOL DISTRICT**
MEEDER
 INVESTMENT MANAGEMENT

Account Number: 57 00 0010 0 00

Date: From SEPTEMBER 01, 2020 through SEPTEMBER 30, 2020

Statement of Transactions

Date		Total Cash	Investment Cost Basis
09/14/2020	PURCHASE MONEY MARKET FGZXX – FIRST AMERICAN GOVT OBLIGATIONS FUND	–63.70	63.70
09/21/2020	PURCHASE MONEY MARKET FGZXX – FIRST AMERICAN GOVT OBLIGATIONS FUND	–211.48	211.48
09/23/2020	MATURITY \$247000 PAR BARCLAYS 2.20% 09/23/20	247,000.00	–247,000.00
09/23/2020	PURCHASE MONEY MARKET FGZXX – FIRST AMERICAN GOVT OBLIGATIONS FUND	–247,000.00	247,000.00
09/23/2020	PURCHASE MONEY MARKET FGZXX – FIRST AMERICAN GOVT OBLIGATIONS FUND	–2,739.33	2,739.33
09/25/2020	PURCHASE MONEY MARKET FGZXX – FIRST AMERICAN GOVT OBLIGATIONS FUND	–115.67	115.67
09/28/2020	PURCHASE MONEY MARKET FGZXX – FIRST AMERICAN GOVT OBLIGATIONS FUND	–2,625.40	2,625.40
09/30/2020	PURCHASE MONEY MARKET FGZXX – FIRST AMERICAN GOVT OBLIGATIONS FUND	–859.90	859.90
09/30/2020	DIVIDEND REINVESTMENT STAR OHIO	–6,883.06	6,883.06
TOTAL PURCHASES		–7,098,955.89	7,098,955.89
TOTAL SALES		7,085,962.74	–7,085,962.74
TOTAL NET PURCHASES AND SALES OF ASSETS		–12,993.15	12,993.15
GAIN (LOSS) REALIZED ON SALES		0.00	

For the Account of: *BEAVERCREEK CITY SCHOOL DISTRICT*



Account Number: *57 00 0010 0 00*
Date: *From SEPTEMBER 01, 2020 through SEPTEMBER 30, 2020*

Statement of Transactions

Date		Total Cash	Investment Cost Basis
OTHER EXPENSES			
09/10/2020	INVESTMENT COUNSEL FEE	-957.50	
09/25/2020	CUSTODIAN FEES	-106.38	
TOTAL OTHER EXPENSES		-1,063.88	0.00

-- Options Summary --

Summary or Detail Report? (S,D) S
Output file: 0920FINSUMMS.TXT
Type: CSV
Print options page? (Y,N) Y
Report heading: BCSD - CLOSE SEPTEMBER 2020
Generate FINDET report for comparison? (Y,N) Y
Sort options: FD
Subtotal options: FD
Include future encumbrance amounts? (Y,N) N
Include accounts with zero amounts? (Y,N) Y
Include accounts which are no longer active? (Y,N,I) Y

BAT_FINSUM executed by MITMANJ on node MVECA0:: at 5-OCT-2020 08:25:33.57

Beavercreek Board of Education Meeting

October 15, 2020

Page 65

Date: 10/05/2020
Time: 8:25 am

Beavercreek City Schools
Financial Report by Fund
BCSD - CLOSE SEPTEMBER 2020

Page: 1
(FINSUM)

Begin Balance	MTD Receipts	FYTD Receipts	MTD Expenditures	FYTD Expenditures	Current Fund Balance	Current Encumbrances	Unencumbered Fund Balance
TOTAL FOR Fund 001 - GENERAL:							
21,100,667.42	2,444,270.23	41,533,626.89	7,484,677.96	22,453,343.06	40,180,951.25	4,190,415.72	35,990,535.53
TOTAL FOR Fund 002 - BOND RETIREMENT:							
4,621,108.43	32.70	3,608,699.58	0.00	31,807.53	8,198,000.48	0.00	8,198,000.48
TOTAL FOR Fund 003 - PERMANENT IMPROVEMENT:							
3,095,713.14	10.43	1,249,548.34	384,566.03	988,264.05	3,356,997.43	605,689.61	2,751,307.82
TOTAL FOR Fund 004 - BUILDING:							
0.00	0.00	0.00	0.00	0.00	0.00	0.00	0.00
TOTAL FOR Fund 006 - FOOD SERVICE:							
0.00	95,564.09	135,762.71	181,358.60	394,573.29	258,810.58-	749,987.78	1,008,798.36-
TOTAL FOR Fund 007 - SPECIAL TRUST:							
53,556.89	0.00	2,500.00	1,400.00	50,200.00	5,856.89	2,500.00	3,356.89
TOTAL FOR Fund 009 - UNIFORM SCHOOL SUPPLIES:							
919,866.05	96,760.19	104,831.08	66,081.37	274,509.45	750,187.68	141,597.53	608,590.15
TOTAL FOR Fund 018 - PUBLIC SCHOOL SUPPORT:							
478,230.80	22,037.76	47,583.82	50,610.74	84,090.72	441,723.90	72,510.39	369,213.51
TOTAL FOR Fund 019 - OTHER GRANT:							
9,778.21	0.00	0.00	0.00	0.00	9,778.21	0.00	9,778.21
TOTAL FOR Fund 020 - SPECIAL ENTERPRISE FUND:							
64,967.72	0.00	2,585.00	0.00	12,983.45	54,569.27	0.00	54,569.27
TOTAL FOR Fund 022 - DISTRICT AGENCY:							
132,728.89	803,133.05	1,921,501.83	816,546.24	2,155,219.12	100,988.40-	11,691.06	112,679.46-
TOTAL FOR Fund 024 - EMPLOYEE BENEFITS SELF INS.:							
2,149,787.62	1,108,536.15	3,201,456.15	1,082,373.00	3,187,390.69	2,163,853.08	0.00	2,163,853.08
TOTAL FOR Fund 027 - WORKMANS COMPENSATION-SELF IN							
283,421.79	18,348.08	18,348.08	8,988.71	14,792.49	286,977.38	66,362.00	220,615.38
TOTAL FOR Fund 200 - STUDENT MANAGED ACTIVITY:							
229,903.44	2,330.00	2,715.00	848.27	6,966.28	225,652.16	45,389.60	180,262.56
TOTAL FOR Fund 300 - DISTRICT MANAGED ACTIVITY:							
605,739.79	94,392.35	99,135.51	47,443.01	82,916.07	621,959.23	306,473.81	315,485.42
TOTAL FOR Fund 401 - AUXILIARY SERVICES:							
270,994.33	15.10	263,227.46	121,697.13	293,401.77	240,820.02	26,661.54	214,158.48

Beavercreek Board of Education Meeting

October 15, 2020

Page 67

Date: 10/05/2020
Time: 8:25 am

Beavercreek City Schools
Financial Report by Fund
BCSD - CLOSE SEPTEMBER 2020

Page: 3
(FINSUM)

Begin Balance	MTD Receipts	FYTD Receipts	MTD Expenditures	FYTD Expenditures	Current Fund Balance	Current Encumbrances	Unencumbered Fund Balance
TOTAL FOR Fund 516 - IDEA PART B GRANTS:							
114,236.16	82,311.37	420,023.02	165,233.42	707,742.60	173,483.42-	67,805.63	241,289.05-
TOTAL FOR Fund 532:							
0.00	0.00	0.00	0.00	0.00	0.00	0.00	0.00
TOTAL FOR Fund 533 - TITLE II D - TECHNOLOGY:							
0.00	0.00	0.00	0.00	0.00	0.00	0.00	0.00
TOTAL FOR Fund 551 - LIMITED ENGLISH PROFICIENCY:							
0.00	1,527.25	2,045.50	2,479.47	4,646.84	2,601.34-	0.00	2,601.34-
TOTAL FOR Fund 572 - TITLE I DISADVANTAGED CHILDRE							
4,506.98	14,505.60	39,945.59	32,648.11	77,100.68	32,648.11-	0.00	32,648.11-
TOTAL FOR Fund 573 - TITLE V INNOVATIVE EDUC PGM:							
0.00	0.00	0.00	0.00	0.00	0.00	0.00	0.00
TOTAL FOR Fund 584 - DRUG FREE SCHOOL GRANT FUND:							
0.00	0.00	0.00	0.00	0.00	0.00	0.00	0.00
TOTAL FOR Fund 587 - IDEA PRESCHOOL-HANDICAPPED:							
7,410.93	2,093.19	13,875.67	2,552.61	23,839.21	2,552.61-	5,352.10	7,904.71-
TOTAL FOR Fund 589:							
0.00	0.00	0.00	0.00	0.00	0.00	0.00	0.00
TOTAL FOR Fund 590 - IMPROVING TEACHER QUALITY:							
6,576.68	0.00	0.00	10,202.00	16,612.68	10,036.00-	15,289.00	25,325.00-
TOTAL FOR Fund 599 - MISCELLANEOUS FED. GRANT FUND							
6,265.60	0.00	0.00	20,420.68	290,037.25	283,771.65-	405.00	284,176.65-
GRAND TOTALS:							
34,156,081.99	4,785,867.54	52,669,844.56	10,599,074.68	31,277,885.57	55,548,040.98	6,404,335.61	49,143,705.37

B. FY21 Amended Certificate of Estimated Resources.

SEE NEXT PAGE(S)

BEAVERCREEK CITY SCHOOL DISTRICT

AMENDED OFFICIAL CERTIFICATE OF ESTIMATED RESOURCES / APPROPRIATIONS

Office of the budget commission of Greene County, Xenia Ohio

To the Taxing Authority of the Beavercreek City School District

The following is the amended official certificate of estimated resources for the fiscal year beginning July 1, 2020, as revised by the Budget Commission of said County, which shall govern the total appropriations made at any time during such fiscal year.

Presented to the Board: October 15, 2020

Fund	Fund	Unencumbered Balance July 1, 2020	* Tax Revenue	Other Revenue	Total Estimated Revenue	Total Resources	FY2021 Appropriations	Balance
General Fund	1	\$ 20,685,983.07	\$ 80,865,720.00	\$ 17,947,597.00	\$ 98,813,317.00	\$ 119,499,300.07	\$ 101,026,770.00	\$ 18,472,530.07
Ferguson Land Lab Trust Fund	7	1,269.29	0.00	1,200.00	1,200.00	2,469.29	2,469.29	0.00
Scholarship Private Purpose Fund	7	52,287.60	0.00	50,000.00	50,000.00	102,287.60	102,287.60	0.00
Public School Support Fund	18	447,817.05	0.00	300,000.00	300,000.00	747,817.05	500,000.00	247,817.05
Other Grants Fund	19	9,778.21	0.00	10,500.00	10,500.00	20,278.21	11,778.21	8,500.00
Athletics and District Managed Activity Fund	300	597,629.44	0.00	790,000.00	790,000.00	1,387,629.44	900,000.00	487,629.44
Auxiliary Services Fund	401	256,448.40	0.00	1,052,912.00	1,052,912.00	1,309,360.40	1,309,360.40	0.00
Data Communications Fund	451	0.00	0.00	0.00	0.00	0.00	0.00	0.00
Straight A Grant	466	0.00	0.00	0.00	0.00	0.00	0.00	0.00
Student Wellness & Success Fund	467	0.00	0.00	0.00	0.00	0.00	0.00	0.00
Miscellaneous State Grants Fund	499	621.12	0.00	51,948.52 (A)	51,948.52	52,569.64	51,948.52 (A)	621.12
Elementary and Secondary School Emerg Relief Fund	507	0.00	0.00	367,800.12	367,800.12	367,800.12	367,800.12	0.00
Coronavirus Relief Fund	510	0.00	0.00	433,646.77	433,646.77	433,646.77	433,646.77	0.00
IDEA-B / Parent Mentor Grant Fund	516	0.00	0.00	2,114,233.88	2,114,233.88	2,114,233.88	2,114,233.88	0.00
Title III Limited English Proficiency Fund	551	0.00	0.00	36,139.29	36,139.29	36,139.29	36,139.29	0.00
Title I Disadvantaged Children Grant Fund	572	0.00	0.00	444,361.33	444,361.33	444,361.33	444,361.33	0.00
IDEA Preschool Grant Fund	587	0.00	0.00	60,948.57	60,948.57	60,948.57	60,948.57	0.00
Title II-A Improving Teacher Quality Grant Fund	590	0.00	0.00	142,275.79	142,275.79	142,275.79	142,275.79	0.00
Miscellaneous Federal Grants Fund	599	0.00	0.00	664,848.80	664,848.80	664,848.80	664,848.80	0.00
Total Special Revenue Fund		1,365,851.11	0.00	6,520,815.07	6,520,815.07	7,886,666.18	7,142,098.57	744,567.61
Bond Retirement Fund - 1995 Bond Issue	0000	2,315,902.58	1,459,097.42	0.00	1,459,097.42	3,775,000.00	3,775,000.00	0.00
Bond Retirement - Prepayment of Debt	9000	0.00	0.00	0.00	0.00	0.00	0.00	0.00
Bond Retirement Fund - 2008 Bond Issue	9008	2,166,844.54	4,773,572.29	0.00	4,773,572.29	6,940,416.83	5,000,000.00	1,940,416.83
MVH Stadium Debt	9300	138,361.31	0.00	130,000.00	130,000.00	268,361.31	123,300.00	145,061.31
Total Debt Service Fund	2	4,621,108.43	6,232,669.71	130,000.00	6,362,669.71	10,983,778.14	8,898,300.00	2,085,478.14
Permanent Improvement Voted Levy Fund	3	34,263.80	879,989.94	0.00	879,989.94	914,253.74	704,000.00	210,253.74
Permanent Improvement Inside Millage Fund	3	2,055,075.24	1,882,098.41	0.00	1,882,098.41	3,937,173.65	1,700,000.00	2,237,173.65
MVH / Zink Field Stadium Project Fund	3	0.00	0.00	0.00	0.00	0.00	0.00	0.00
Building / Construction Fund - 2008 Bond Issue	4	0.00	0.00	0.00	0.00	0.00	0.00	0.00
Building / Construction Fund	4	0.00	0.00	0.00	0.00	0.00	0.00	0.00
Total Capital Projects Fund		2,089,339.04	2,762,088.35	0.00	2,762,088.35	4,851,427.39	2,404,000.00	2,447,427.39
Food Service Fund	6	0.00	0.00	2,386,630.00	2,386,630.00	2,386,630.00	2,386,630.00	0.00
Uniform School Supply Fund	9	865,212.60	0.00	500,000.00	500,000.00	1,365,212.60	875,000.00	490,212.60
Summer School Fund	20	64,967.72	0.00	12,000.00	12,000.00	76,967.72	45,000.00	31,967.72
Total Enterprise Fund		930,180.32	0.00	2,898,630.00	2,898,630.00	3,828,810.32	3,306,630.00	522,180.32
Medical/Dental Self-Insurance Fund	24	2,149,787.62	0.00	13,000,000.00	13,000,000.00	15,149,787.62	14,000,000.00	1,149,787.62
Workers' Compensation Insurance Fund	27	274,355.79	0.00	95,000.00	95,000.00	369,355.79	200,000.00	169,355.79
Total Internal Service Fund		2,424,143.41	0.00	13,095,000.00	13,095,000.00	15,519,143.41	14,200,000.00	1,319,143.41
District Agency Fund	22	132,728.89	0.00	8,300,000.00	8,300,000.00	8,432,728.89	8,432,728.89	0.00
Student Managed Activity Fund	200	220,718.31	0.00	240,000.00	240,000.00	460,718.31	320,000.00	140,718.31
Total Fiduciary Fund		353,447.20	0.00	8,540,000.00	8,540,000.00	8,893,447.20	8,752,728.89	140,718.31
TOTALS		\$ 32,470,052.58	\$ 89,860,478.06	\$ 49,132,042.07	\$ 138,992,520.13	\$ 171,462,572.71	\$ 145,730,527.46	\$ 25,732,045.25

* Tax Revenue = Real Estate, Personal (PU & Other), Trailer, Homestead & Rollback, \$10K Exempt.

(A): Update 499 grant revenue and appropriations to include the School Bus Purchase Grant

Treasurer's Certification:

Resolution:

C. October 2020 Donated Items

SEE NEXT PAGE(S)

<u>DONOR</u>	<u>ITEM/GIFT RECEIVED BY</u>	<u>ITEM DONATED</u>
Ahles, Deborah	BHS Staff Scholarship Fund	\$100.00
Beaver-Vu Bowl	Ankeney Middle School	25 Free Bowling Passes
Bernard, Laura	Coy Middle School - Band Fund	\$50.00
Bickert, Ron	Coy Middle School - Band Fund	\$100.00
Blackman, Bruce & Dorothy	Coy Middle School - Band Fund	\$100.00
Bravard, Dudley & Nicole	Coy Middle School - Band Fund	\$250.00
Carter, Douglas & Kay	Coy Middle School - Choir Fund	\$100.00
Coffey, Heather	Coy Middle School - Choir Fund	\$50.00
Dang, Minh	Coy Middle School - Choir Fund	\$40.00
Drew, Lyle	Ferguson Hall - JROTC	Air Force Uniform Items
Dunlap, John	Coy Middle School - Choir Fund	\$50.00
Erbaugh, Tom & Sharon	Coy Middle School - Band Fund	\$25.00
Fensel, Phil & Linda	Coy Middle School - Band Fund	\$100.00
Gill, Robert	Coy Middle School - Choir Fund	\$50.00
Goldshot, Cristi	Coy Middle School - Band Fund	\$50.00
Gruenberg, Mark	Coy Middle School - Band Fund	\$100.00
Horton, Christopher	Coy Middle School - Choir Fund	\$100.00
Hot Head Burrito	Ankeney Middle School	50 Free Burrito Coupons
Hurley, Carrie	Student Nutrition Department	\$50.00
Jet's Pizza	Ankeney Middle School	6 Free Large Pizza Coupons
Kromphardt, Matthew & Carol	Coy Middle School - Band Fund	\$50.00
Kruas, Jason & Emily	Coy Middle School - Band Fund	\$50.00
Lauden, Michael	Coy Middle School - Choir Fund	\$110.00
McNutt, Stacy	Coy Middle School - Band Fund	Clarinet
Milano's Atlantic City Submarines	Ankeney Middle School	300 - \$5 Vouchers
Morrison, Sharon	Beavercreek City Schools	140 Children Size Masks
Nash, Katy	Coy Middle School - Band Fund	\$150.00
Olsen, Christina & John	Coy Middle School - Band Fund	\$50.00
Oswald, Douglas & Jennifer	Coy Middle School - Band Fund	\$25.00
Prickett, Angela	Student Nutrition Department	\$150.00
Rapid Fired Pizza	Ankeney Middle School	50 Free Pizza Coupons
Reichert, Sandra	Coy Middle School - Band Fund	\$25.00
Rolls, Ryan	Beavercreek High School - Tech Crew/Drama Dept	TV & TV Stand
Rowe, Steven & Lozano, Patricia	Coy Middle School - Band Fund	\$100.00
Silcott, Shannon	Student Nutrition Department	\$25.00
Sochocki, Stacy	Ankeney Middle School	Assorted Supplies
Speelman, Douglas	Coy Middle School - Choir Fund	\$70.00
Steck & Stevens	Ferguson Hall	80 Badger Tie Masks
Sunar, Ulas & Semra	Coy Middle School - Band Fund	\$30.00
Sutton, Polly	Coy Middle School - Choir Fund	\$120.00
The Greene Optimist Club	Beavercreek City Schools	\$2,000.00
Tisler, Phyllis	Student Nutrition Department	\$200.00
Tritsch, Erik & Carolyn	Coy Middle School - Band Fund	\$100.00
Tropical Smoothie Café	Ankeney Middle School	70 Free Boxed Lunches
Tropical Smoothie Café	Ankeney Middle School	30 Free Food/Smoothie Coupons
Wells, Eric	Coy Middle School - Choir Fund	\$50.00
Wolf, Allison	Coy Middle School - Choir Fund	\$50.00

Ms. Hunt seconded the motion.

ROLL CALL: Chris Stein, aye; Krista Hunt, aye; Gene Taylor, aye; Dennis Morrison, aye; Jo Ann Rigano, aye.

Motion carried 5-0

X. NEW BUSINESS – ITEMS FOR BOARD ACTION – RESOLUTION 2020-68

Ms. Hunt made a motion to consider the recommendation of the Superintendent to approve the September 2020 new business items A thru B as presented.

A Employment, Salary Changes, Leaves of Absence, and Terminations

SEE NEXT PAGE(S)

The following certificated persons are recommended for employment, salary change, leave of absence, and termination of a contract.

EMPLOYMENT 2020-2021**2020-2021 Supplemental Contracts**

The following personnel are recommended for employment in the Supplemental Salary Positions shown for the 2020-2021 school year subject to the terms and conditions of the State Board of Education Rules 3301-20-01, 3301-26-01 and 3301-27-02. Pursuant to ORC 3313.53, vacant positions were posted for licensed employees, licensed non-employees, and non-licensed non-employees. For the positions for which there were no qualified licensed individuals, licensed non-employees or non-licensed non-employees are recommended. Salaries shall be paid according to the Supplemental Salary Schedule adopted for the 2020-2021 school year.

Ahles, Deborah Beavercreek High School	Envirothon Scale 11, Step 3 - 3 Years Longevity Credit (L-0)
Anderson, John Beavercreek High School	LINK/WEB Advisor Scale 11, Step 3 -9 Years Longevity Credit (L-2)
Anderson, Sara Beavercreek High School	High School Class Advisor (1/2 Assignment) Scale 10, Step 3 - 10 Years Longevity Credit (L-2)
Bianco, Kelly Beavercreek High School	High School Site Manager - Winter Scale 7, Step 3 - 16 Years Longevity Credit (L-3)
Bisignani, Brian Beavercreek High School	High School National Honor Society Advisor (1/2 Assignment) Scale 11, Step 3 - 3 Years Longevity Credit (L-0)
Bisignani, Brian Beavercreek High School	Mathematics Department Head Scale 7, Step 3 - 3 Years Longevity Credit (L-0)
Bobbitt, Robert Non-Licensed, Non-Employee	Head Varsity Bowling Coach Scale 4, Step 3 - 8 Years Longevity Credit (L-1)
Boddie, Amber Beavercreek High School	High School Class Advisor (1/2 Assignment) Scale 10, Step 3 - 11 Years Longevity Credit (L-2)
Bradley, Chelsea Licensed, Non-Employee	Assistant Varsity Basketball Coach - Girls Scale 4, Step 2 - 5 Years Longevity Credit (L-1)
Bridgman, Elizabeth Non-Licensed, Non-Employee	Assistant High School Swim Team Coach Scale 6, Step 2 -1 Year Longevity Credit (L-0)
Burcham, Mindy Beavercreek High School	High School National Honor Society Advisor (1/2 Assignment) Scale 11, Step 3 - 3 Years Longevity Credit (L-0)
Burke Danielle Non-Licensed, Non-Employee	High School Speech Team Advisor BHS Scale 8, Step 2 - 1 Year Longevity Credit (L-0)
Canfield, Eleanor Beavercreek High School	Social Studies Department Head Scale 6, Step 3 - 3 Years Longevity Credit (L-0)

Clark, Kelly Parkwood	Grades K-1 Department Head Scale 9, Step 3 - 21 Years Longevity Credit (L-5)
Clingner, Jeremy Beavercreek High School	Assistant Varsity Wrestling Coach Scale 5, Step 3 - 13 Years Longevity Credit (L-3)
Conrad, Laura Coy Middle School	Middle School Instrumental Director CMS Scale 11, Step 3 - 5 Years Longevity Credit (L-1)
Cox, Lori Coy Middle School	Middle School Student Council Advisor Scale 10, Step 3 - 3 Years Longevity Credit (L-0)
Creech, W. Angela Beavercreek High School	High School Yearbook Advisor Scale 6, Step 3 - 32 Years Longevity Credit (L-6)
Crockett, Diedre Coy Middle School	MS Low Incidence Disability After School Activity Supervisor Scale 11, Step 3 - 3 Years Longevity Credit (L-0)
Curd, Julie Trebein	Grades 2-3 Department Head Scale 8, Step 3 - 7 Years Longevity Credit (L-1)
Debord, Jana Beavercreek High School	High School Student Council Advisor (1/2 Assignment) Scale 10, Step 3 - 20 Years Longevity Credit (L-4)
Deen, Susan Beavercreek High School	High School Art Club Advisor Scale 11, Step 3 - 2 Years Longevity Credit (L-0)
Deen, Susan Beavercreek High School	Art Department Head Scale 9, Step 3 - 4 Years Longevity Credit (L-0)
Deschappelles, Nichole Parkwood	Grades 4-5 Department Head Scale 9, Step 3 - 17 Years Longevity Credit (L-4)
Dieter, Angela Parkwood	Pod Leader Scale 10, Step 1 - 0 Years Longevity Credit (L-0)
Duke, Lori Coy Middle School	CMS Current Interest (1/2 Assignment) Battle of the Books Scale 12, Step 3 - 3 Years Longevity Credit (L-0)
Duley, Robyn Beavercreek High School	Head Cheerleading Director - Winter Scale 7, Step 3 - 11 Years Longevity Credit (L-2)
Enneking, Jason Beavercreek High School	Director of Friends Ensemble Scale 4, Step 3 - 6 Years Longevity Credit (L-1)
Enneking, Jason Beavercreek High School	Show Choir Combo Scale 10, Step 3 - 6 Years Longevity Credit (L-1)
Ferguson, Dustin Trebein	Unified Arts Department Head Scale 9, Step 3 - 9 Years Longevity Credit (L-2)
Frey, Sheila Trebein	Building Technology Leader Scale 8, Step 3 - 2 Years Longevity Credit (L-0)
Fouts, Melissa Ankeney Middle School	Middle School Intramurals Winter Scale 10, Step 3 - 7 Years Longevity Credit (L-1)

Frost, Matthew Beavercreek High School	High School Instrumental Director Scale 7, Step 3 - 5 Years Longevity Credit (L-1)
Frost, Matthew Beavercreek High School	Jazz Ensemble Director Scale 10, Step 3 - 12 Years Longevity Credit (L-2)
Gilbert, Glenn Beavercreek High School	High School Student Council Advisor (1/2 Assignment) Scale 10, Step 3 - 6 Years Longevity Credit (L-1)
Grilliot, Brent Beavercreek High School	High School Site Manager - Winter Scale 10, Step 3 - 2 Years Longevity Credit (L-0)
Guterman, Gregory Beavercreek High School	Head Varsity Ice Hockey Coach Scale 3, Step 3 - 4 Years Longevity Credit (L-0)
Haacke, Amanda Beavercreek High School	HS Low Incidence Disability After School Activity Supervisor Scale 11, Step 2 - 1 Year Longevity Credit (L-0)
Haacke, Amanda Beavercreek High School	High School Class Advisor Scale 10, Step 3 - 7 Years Longevity Credit (L-1)
Haacke, Amanda Beavercreek High School	Assistant All Stars Dance Team Coach Scale 8, Step 1 - 0 Years Longevity Credit (L-0)
Hagood, Sheila Shaw	Lego Robotic Team Advisor - Shaw Scale 11, Step 3 - 2 Years Longevity Credit (L-0)
Hagood, Sheila Shaw	Special Education Department Head Scale 9, Step 3 - 7 Years Longevity Credit (L-1)
Harris, Donald Licensed, Non-Employee	Assistant Varsity Wrestling Coach (1/2 Assignment) Scale 5, Step 3 - 11 Years Longevity Credit (L-2)
Hill, Laura Shaw	Grade 4, GRR and ESL 2 Department Head Scale 9, Step 2 - 1 Year Longevity Credit (L-0)
Hitt, E.Nicole Coy Middle School	MS Low Incidence Disability After School Activity Supervisor Scale 11, Step 3 - 3Years Longevity Credit (L-0)
Horney, Tammy Main	Grades K-1 Department Head Scale 8, Step 3 - 21 Years Longevity Credit (L-5)
Hurley, Sean Coy Middle School	CMS Current Interest A Cappella "Unaccompanied Minors" Scale 12, Step 3 - 3 Years Longevity Credit (L-0)
Hurley, Sean Coy Middle School	Middle School Vocal Music Director Scale 11, Step 3 - 6 Years Longevity Credit (L-1)
Hurley, Sean Coy Middle School	Middle School Show Choir Director Scale 8, Step 3 - 3 Years Longevity Credit (L-0)
Kamaka, Brandon Non-Licensed, Non-Employee	High School Debate Team Advisor Scale 8, Step 3 - 7 Years Longevity Credit (L-1)
Kingery, Krista Beavercreek High School	HS Low Incidence Disability After School Activity Supervisor Scale 11, Step 3 - 5 Years Longevity Credit (L-1)

Kitchen, Ashley Main	Lego Robotic Team Advisor - Coy Middle School Scale 11, Step 3 - 3 Years Longevity Credit (L-0)
Laws, Susan Beavercreek High School	Guidance Department Head Scale 9, Step 3 - 5 Years Longevity Credit (L-1)
Lehman, Julie Main	Special Education Department Head Scale 8, Step 3 - 9 Years Longevity Credit (L-2)
Lindeman, Theresa Coy Middle School	School Webmaster Scale 11, Step 3 - 9 Years Longevity Credit (L-2)
Lloyd, Bradley Non - Licensed, Non-Employee	Assistant Varsity Ice Hockey Coach Scale 5, Step 2 - 1 Year Longevity Credit (L-0)
Loper, Nicholas Trebein	Grades 4-5 Department Head Scale 8, Step 3 - 5 Years Longevity Credit (L-1)
Mack, Laurel Coy Middle School	LINK/WEB Advisor (1/2 Assignment) Scale 11, Step 2 - 1 Year Longevity Credit (L-0)
Mackey, Angela Ankeney Middle School	Middle School Intramurals Winter Scale 10, Step 3 - 2 Years Longevity Credit (L-0)
Maney, Stacy Ankeney Middle School	Middle School Yearbook Advisor 1/2 Assignment Scale 10, Step 1 - 0 Years Longevity Credit (L-0)
McAllister Brett Coy Middle School	Science Department Head Scale 9, Step 3 - 4 Years Longevity Credit (L-0)
McClure, Jill Coy Middle School	Middle School National Junior Honor Society Scale 11, Step 3 - 2 Years Longevity Credit (L-0)
McCormick, Allison Shaw	Grade 3 and Physical Education Department Head Scale 9, Step 1 -0 Years Longevity Credit (L-0)
McDaniel, Kristine Beavercreek High School	High School Science Bowl Advisor Scale 11, Step 3 - 12 Years Longevity Credit (L-2)
McGriff, Bonnie Beavercreek High School	World Language Department Head Scale 8, Step 3 - 16 Years Longevity Credit (L-3)
McGuire, Jazzmine Non-Licensed, Non-Employee	Varsity Competitive Cheer Coach - Winter Scale 8, Step 3 -6 Years Longevity Credit (L-1)
McKee, Christine Parkwood	Grades 2-3 Department Head Scale 8, Step 3 - 7 Years Longevity Credit (L-1)
McKaig, Riley Beavercreek High School	High School Junior Varsity Dance Team Coach Scale 7, Step 2 - 1 Year Longevity Credit (L-0)
Meister, Beth Coy Middle School	Social Studies Department Head Scale 9, Step 2 - 1 Year Longevity Credit (L-0)

Meleason, Christopher Licensed, Non-Employee	Head High School Swim Team BHS Scale 4, Step 3 - 3 Years Longevity Credit (L-0)
Miller, Kori Shaw	Building Technology Leader Scale 8, Step 3 - 2 Years Longevity Credit (L-0)
Minton, Kristina Coy Middle School	Middle School Power of the Pen Scale 11, Step 2 - 1 Year Longevity Credit (L-0)
Minton, Kristina Coy Middle School	Coy Middle School Yearbook Advisor Scale 10, Step 2 - 1 Year Longevity Credit (L-0)
Montague, Andrew Beavercreek High School	Health & Physical Education Department Head Scale 10, Step 3 - 4 Years Longevity Credit (L-0)
Nartker, Chantelle Beavercreek High School	English Department Head Scale 7, Step 3 - 8 Years Longevity Credit (L-1)
Nartker, Christopher Beavercreek High School	Assistant Varsity Basketball Coach - Boys Scale 4, Step 3 - 8 Years Longevity Credit (L-1)
Nitsch, Karen Parkwood	Building Technology Leader (½ Assignment 1st semester) Scale 8, Step 2 - 1 Year Longevity Credit (L-0)
Osterfeld, Rebecca Coy Middle School	Language Arts Department Head Scale 7, Step 3 - 13 Years Longevity Credit (L-3)
Patterson, Dana Non-Licensed, Non-Employee	Assistant Varsity Basketball Coach - Boys Scale 4, Step 2 - 1 Year Longevity Credit (L-0)
Pelphrey, Katherine Beavercreek High School	Business Education Department Head Scale 10, Step 3 - 12 Years Longevity Credit (L-2)
Phillips, Rachael Beavercreek High School	High School Vocal Music Director Scale 7, Step 3 - 5 Years Longevity Credit (L-1)
Phillips, Rachael Beavercreek High School	Music Department Head Step 10, Scale 3 - 2 Years Longevity Credit (L-0)
Phillips, Rachael Beavercreek High School	High School Local Scholarship Coordinator Scale 10, Step 1 - 0 Years Longevity Credit (L-0)
Pittman, Malcolm Licensed, Non-Employee	Head JV-B Basketball Coach - Boys Scale 5, Step 2 - 1 Year Longevity Credit (L-0)
Pittman, Steven Licensed, Non-Employee	Head Varsity Basketball Coach - Boys Scale 1, Step 3 - 1 Year Longevity Credit (L-0)
Prater, Alan Beavercreek High School	Industrial Technology Department Head Scale 10, Step 2 - 1 Year Longevity Credit (L-0)
Prince, Mallory Shaw	Kindergarten and Music Department Head Scale 9, Step 2 - 1 Year Longevity Credit (L-0)
Pryor, William Parkwood	Unified Arts Department Head Scale 10, Step 3 - 6 Years Longevity Credit (L-1)

Reedy, Richard Non-Licensed, Non-Employee	Head Varsity Gymnastics Coach - Girls Scale 4, Step 3 - 17 Years Longevity Credit (L-4)
Reidenbaugh, Jessica Beavercreek High School	BHS Current Interest Junior Optimist International Scale 12, Step 3 - 2 Years Longevity Credit (L-1)
Rice, Katherine Coy Middle School	Special Education Department Head Scale 7, Step 3 - 3 Years Longevity Credit (L-0)
Riggins, Amanda Non-Licensed, Non-Employee	High School Varsity Dance Team Coach Scale 4, Step 2 - 1 Year Longevity Credit (L-0)
Rizzotte, Paige Beavercreek High School	All Stars Dance Team Coach Scale 6, Step 3 - 3 Years Longevity Credit
Rizzotte, Paige Beavercreek High School	Special Education Department Head Scale 6, Step 3 - 10 Years Longevity Credit (L-2)
Ross, Emma Trebein	Special Education Department Head Scale 8, Step 3 - 19 Years Longevity Credit (L-4)
Ruefly, Josalyn Non-Licensed, Non-Employee	Assistant Varsity Cheer Coach Basketball - Winter Scale 8, Step 3 - 5 Years Longevity Credit (L-1)
Russ, Jami Beavercreek High School	High School Class Advisor Scale 10, Step 3 - 6 Years Longevity Credit (L-1)
Russ, Jami Beavercreek High School	High School Literary Magazine Advisor Scale 10, Step 3 - 4 Years Longevity Credit (L-0)
Sayer, Barb Shaw	Grade 2 and Art Department Head Scale 9, Step 2 - 1 Year Longevity Credit (L-0)
Schaadt, Timothy Beavercreek High School	High School Model UN Advisor Scale 11, Step 3 - 5 Years Longevity Credit (L-1)
Schaefer, Lonni Coy Middle School	LINK/WEB Advisor (1/2 Assignment) Scale 11, Step 3 - 4 Years Longevity Credit (L-0)
Schmidt, Matthew Coy Middle School	Building Technology Leader Scale 8, Step 3 - 2 Years Longevity Credit (L-0)
Schmidt, Jennifer Beavercreek High School	HS Low Incidence Disability After School Activity Supervisor Scale 11, Step 3 - 4 Years Longevity Credit (L-0)
Schoenbaechler, Steve Non-Licensed, Non-Employee	Assistant High School Swim Team Diving Coach Scale 6, Step 3 - 3 Years Longevity Credit (L-0)
Sears, Kimberly Coy Middle School	CMS Current Interest (1/2 Assignment) Battle of the Books Scale 12, Step 3 - 2 Years Longevity Credit (L-0)
Seilhamer, W. Aric Beavercreek High School	Assistant Varsity Basketball Coach - Girls Scale 4, Step 3 - 19 Years Longevity Credit (L-4)

Shannon, Michelle Coy Middle School	MS Low Incidence Disability After School Activity Supervisor Scale 11, Step 3 - 3 Years Longevity Credit (L-0)
Shields, Kayla Non-Licensed, Non-Employee	Head JV-B Basketball Coach - Girls Scale 5, Step 2 - 1 Year Longevity Credit (L-0)
Shimko, Brian Ankeney Middle School	Middle School Yearbook Advisor 1/2 Assignment Scale 10, Step 1- 0 Years Longevity Credit (L-0)
Shirley, Hilda Coy Middle School	Muse Machine Advisor Scale 11, Step 3 - 5 Years Longevity Credit (L-1)
Sines, Kristen Shaw	Grade 1 and ESL 1 Department Head Scale 9, Step 3 - 8 Years Longevity Credit (L-1)
Sizemore, Michael Licensed, Non-Employee	Assistant Varsity Wrestling Coach (1/2 Assignment) Scale 5, Step 3 - 5 Years Longevity Credit (L-1)
Spence, Ellen Beavercreek High School	Beavercreek High School Academic Challenge Team Scale 9, Step 3 - 5 Years Longevity Credit (L-1)
Stamper, Dawn Beavercreek High School	Building Technology Leader Scale 8, Step 2 - 1 Year Longevity Credit (L-0)
Stamper, Dawn Beavercreek High School	Muse Machine Advisor Scale 11, Step 3 - 9 Years Longevity Credit (L-2)
Stamper, Ronald Beavercreek High School	School Webmaster Scale 11, Step 3 - 5 Years Longevity Credit (L-1)
Strickland, Marlyn Beavercreek High School	High School Instrumental Director Scale 7, Step 3 - 4 Years Longevity Credit (L-0)
Strickland, Marlyn Beavercreek High School	Jazz Ensemble Director Scale 10, Step 3- 5 Years Longevity Credit (L-1)
Strickland, Mariah Coy Middle School	Middle School Instrumental Director Scale 11, Step 3 - 2 Years Longevity Credit (L-0)
Strickland, Mariah Coy Middle School	Middle School Jazz Ensemble Director Scale 11, Step 3 - 2 Year Longevity Credit (L-0)
Sumner, Dustine Non-Licensed, Non-Employee	Assistant Varsity Bowling Coach Scale 7, Step 3 - 2 Years Longevity Credit (L-0)
Sumner, Mickenzie Non-Licensed, Non-Employee	Assistant Varsity Bowling Coach Scale 7, Step 3 - 6 Years Longevity Credit (L-1)
Torbeck, Jennifer Trebein	Grades K-1 Department Head Scale 8, Step 3 - 7 Years Longevity Credit (L-0)
Volk, Jennifer Shaw	Grade 5 and IMC Department Head Scale 9, Step 3 - 2 Years Longevity Credit (L-0)

Volmer, Diana Beavercreek High School	Science Department Head Scale 7, Step 3 - 18 Years Longevity Credit (L-4)
Webb, Dennis Beavercreek High School	Assistant Varsity Wrestling Coach Scale 5, Step 3 - 16 Years Longevity Credit (L-3)
Webb, Sarah Beavercreek High School	High School Class Advisor Scale 10, Step 3 - 9 Years Longevity Credit (L-2)
Weimer, Thomas Non-Licensed, Non-Employee	Head 8th Grade Basketball Coach - Girls Scale 6, Step 3 - 2 Years Longevity Credit (L-0)
Wise, Gary Non-Licensed, Non-Employee	Head Varsity Wrestling Coach Scale 2, Step 3- 29 Years Longevity Credit (L-6)
Wisniewski, Katey Ankeney Middle School	Lego Robotic Team Advisor - Ankeney Middle School Scale 11, Step 2 - 1 Years Longevity Credit (L-0)
Wisniewski, Katey Valley	Lego Robotic Team Advisor - Valley Scale 11, Step 2 - 1 Years Longevity Credit (L-0)
Wolf, Allison Coy Middle School	Math Counts Team Advisor Scale 11, Step 3 - 11 Years Longevity Credit (L-2)
Wolf Allison Coy Middle School	Mathematics Department Head Scale 9, Step 3 - 7 Years Longevity Credit (L-1)
Zink, Edward Licensed, Non-Employee	Head Varsity Basketball Coach - Girls Scale 1, Step 3 - 45 Years Longevity Credit (L-6)

2020-2021 PSAT Administrator

Duley, Robyn

2020-2021 PSAT Assistant Test Coordinator

Danver, Lindsay

2020-2021 PSAT Proctors

Boddie, Amber	Linguist, Daniel	Reidenbaugh, Derek
Canfield, Eleanor	Martins, Christin	Soliman, Edward
Debord, Jana	Massey, Kristi	
Ewart, Jessica	McKaig, Riley	

2020-2021 Resident Educator Mentors

Stanforth, William

Wilburn, Beth

2020-2021 Resident Educator RESA Facilitator

Hickey, Janinne
Maloney, Shelby

Willburn, Beth
Zois, Christy

2020-2021 Substitute Teachers**Fully Licensed Teacher Substitutes**

Chaltry-Melvin, Jennifer	4 Yr. RE	AYA (7-12) Integrated Language Arts
Karr, Heather	1 Yr. Temp	EC (P-3)
Mees, Heather	4 Yr. RE	EC (P-3) Reading (P-3)
Kucera, Brian	1 Yr. Temp	MC (4-9) Reading, Science, Social Studies
Steeber, Sherri	5 Yr. Pro	EL (1-8) Reading (K-12)

Post Secondary Degree Degree Related to Area of Licensure Substitutes

Scott, Randy	MA PK-12 Integrated Business, Marketing
--------------	---

Post Secondary Education Degree Unlimited Substitutes

Climie, Mary Joyce	Multi-Age PK-12 Education Degree
Jans, Kendall	Multi-Age PK-12 Education Degree

General Substitutes (limited to one semester in a specific class)

Aschi, Laura	Murrell, Marlissa
Coles, Holly	Scott, Destiny
King, Aaron	

ADVANCEMENT DUE TO ADDITIONAL CREDITS AND OR VERIFICATION OF EXPERIENCE

Craft, Melissa	From M to M+15
O'Dell, Amanda	From Step 0 to Step 2

LEAVE OF ABSENCES

Eaton, Tabitha	05/06/2020 - 09/07/2020
Trebein Elementary	49 Days Unpaid Administrative Leave

ADJUSTMENTS

Stecker, Rogenia	Special Education Department Head
Preschool	Scale 7, Step 2 - 1 Year Longevity Credit (L-0)

RESIGNATIONS

Bertke, Alan	Retirement Effective February 19, 2021
Ankeney Middle School	English
Denton, Roxanne	Retirement Effective May 31, 2021
Coy Middle School	Intervention Specialist
Eaton, Tabitha	Resignation Effective September 30, 2020
Trebein Elementary	Intervention Specialist
Poor, Patrick	Retirement Effective February 19, 2021
Beavercreek High School	Industrial Technology

The following individuals are recommended for employment, lateral transfer, leave of absence, temporary transfer, and termination:

EMPLOYMENT**Alternate Mechanic Helper**

Kardeen, Steve
Alternate Mechanic Helper
Transportation Department

Effective September 8, 2020
Base Contract 2021
Step 1/L-0/BCSD 0 Years Exp.
\$20.24/hr.

Bus Driver

Buchanan, James
Driver
Transportation
(Replacement)

Effective October 5, 2020
Base Contract 2021
Step 1/L-0/BCSD 0 Years Exp.
\$22.06/hr.

Kennedy, Zachary
Driver
Transportation
(New Position)

Effective October 6, 2020
Base Contract 2021
Step 1/L-0/BCSD 0 Years Exp.
\$22.06/hr.

Crossing Attendant

Gold, Tiffany
Crossing Attendant
Transportation Department
(Replacement)

Effective September 8, 2020
Base Contract 2021
Step 4/L-0/BCSD 0 Years Exp.
\$17.12/hr.

Custodian

Christman, Erica
Custodian
Coy MS/Trebein Elementary
(New Position)

Effective September 8, 2020
Base Contract 2021
Step 1/L-0/BCSD 0 Years Exp.
\$19.04/hr.

Driver Trainee

Sheets, George
Thomas, Dawn

MOU Drivers

Balmer, Lori	\$26.62/hr.
McCoy, Lynn	\$27.55/hr.

Sign Language Interpreter

Hawkins, Hannah	Effective October 19, 2020
Main Elementary	Base Contract 2021
(New Position)	Step 3/L-0/BCSD 0 Yrs. Exp.
	\$24.49/hr.

Special Needs Assistant

Paddock, Haley	Effective October 12, 2020
Special Needs Assistant (Instructional)	Base Contract 2021
Parkwood Preschool	Step 1/L-0/BCSD 0 Yrs. Exp.
(Replacement)	\$18.43/hr.

Substitute - Administrative Assistant

Rafferty, Mechelle	Rife-Johnson, Nicole	Zollars, Jennifer
--------------------	----------------------	-------------------

Substitute - Building/Office Assistant

Guthrie, Amy	Rafferty, Mechelle	Zollars, Jennifer
--------------	--------------------	-------------------

Substitute - Custodian

Bellomy, Austin

Substitute - IMC Tech

Guthrie, Amy	McClure, Melissa	Rafferty, Mechelle
Rife-Johnson, Nicole	Zollars, Jennifer	

Substitute - 2-hr. Monitor Assistant

Dubie, Virginia	King, Cheryl	Noll, Jennifer
-----------------	--------------	----------------

Substitute - Skills Lab Technician

Howe, Devon

Raisch, Melissa

Zollars, Jennifer

Substitute - Special Needs Assistant Instructional

King, Cheryl

McClure, Melissa

Noll, Jennifer

Substitute - Student Nutrition

Groves, Jordyn

Substitute - Teacher Assistant

Guthrie, Amy

Noll, Jennifer

Zollars, Jennifer

LATERAL TRANSFERS

Lovely, Dawn

Effective October 5, 2020

FROM: 2 hr. Monitor Assistant @ Fairbrook Elementary

TO: 2 hr. Monitor Assistant @ Beavercreek High School

(Replacement)

Roe, Greg

Effective October 5, 2020

FROM: 2 hr. Monitor Assistant @ Coy Middle School

TO: 2 hr. Monitor Assistant @ Beavercreek High School

(Replacement)

LEAVE OF ABSENCE

Henz, Sheila

Driver

Transportation

Effective August 18 - September 16, 2020

Unpaid Leave

22 Days

Langley, Angela

2-Hr. Monitor

Coy Middle School

Effective August 18-20, 2020

Other Unpaid Leave

3 Days

Todd, Masami

2-Hr. Monitor

Coy Middle School

Effective August 18-20, 2020

Other Unpaid Leave

3 Days

TEMPORARY TRANSFER

Chessman, Debbie Effective August 24, 2020
FROM: Class IV Assistant Manager @ Coy Middle School Step 12/L-1
TO: Class V Manager @ Coy Middle School Step 11/L-1
\$23.32/hr.

Gilley, Lisa Effective September 18, 2020
FROM: Special Needs Assistant @ Coy MS
TO: Special Needs Assistant @ Main Elementary

TERMINATION

Henz, Sheila Effective September 16, 2020
Driver Beaver Creek 27 Years
Transportation Department Resignation

B Approval of Online Student Calendar

SEE NEXT PAGE(S)



2020-2021 Pupil ONLINE LEARNING

School Calendar

Adjusted due to COVID-19

August 2020							September 2020							October 2020						
Sun	Mon	Tue	Wed	Thu	Fri	Sat	Sun	Mon	Tue	Wed	Thu	Fri	Sat	Sun	Mon	Tue	Wed	Thu	Fri	Sat
						1			1	2	3	4	5					1	2	3
2	3	4	5	6	7	8	6	7	8	9	10	11	12	4	5	6	7	8	9	10
9	10	11	12	13	14	15	13	14	15	16	17	18	19	11	12	13	14	15	16	17
16	17	18	19	20	21	22	20	21	22	23	24	25	26	18	19	20	21	22	23	24
23	24	25	26	27	28	29	27	28	29	30				25	26	27	28	29	30	31
30	31																			
November 2020							December 2020							January 2021						
Sun	Mon	Tue	Wed	Thu	Fri	Sat	Sun	Mon	Tue	Wed	Thu	Fri	Sat	Sun	Mon	Tue	Wed	Thu	Fri	Sat
1	2	3	4	5	6	7			1	2	3	4	5						1	2
8	9	10	11	12	13	14	6	7	8	9	10	11	12	3	4	5	6	7	8	9
15	16	17	18	19	20	21	13	14	15	16	17	18	19	10	11	12	13	14	15	16
22	23	24	25	26	27	28	20	21	22	23	24	25	26	17	18	19	20	21	22	23
29	30						27	28	29	30	31			24	25	26	27	28	29	30
														31						
February 2021							March 2021							April 2021						
Sun	Mon	Tue	Wed	Thu	Fri	Sat	Sun	Mon	Tue	Wed	Thu	Fri	Sat	Sun	Mon	Tue	Wed	Thu	Fri	Sat
	1	2	3	4	5	6		1	2	3	4	5	6					1	2	3
7	8	9	10	11	12	13	7	8	9	10	11	12	13	4	5	6	7	8	9	10
14	15	16	17	18	19	20	14	15	16	17	18	19	20	11	12	13	14	15	16	17
21	22	23	24	25	26	27	21	22	23	24	25	26	27	18	19	20	21	22	23	24
28							28	29	30	31				25	26	27	28	29	30	
May 2021							June 2021							Legend						
Sun	Mon	Tue	Wed	Thu	Fri	Sat	Sun	Mon	Tue	Wed	Thu	Fri	Sat	First Day -- All Students						
						1			1	2	3	4	5	No School: Professional Development						
2	3	4	5	6	7	8	6	7	8	9	10	11	12	No School: All Offices Closed						
9	10	11	12	13	14	15	13	14	15	16	17	18	19	No School						
16	17	18	19	20	21	22	20	21	22	23	24	25	26	No School: Parent Teacher Conferences Exchange Day						
23	☆	25	26	27	28	29	27	28	29	30				End of Grading Period - Early Dismissal						
30	31													No School: Staff Work and PD Days						
☆ = GRADUATION: MAY 24, 2021														Staggered Start Days						

Student Days

1st Semester = 87 days; 2nd Semester = 89 days: Total Days = 176If more than seven (7) calamity days occur, make up days, beginning with the eighth (8th) day, will begin on June 1, 2021.

Mr. Stein seconded the motion.

ROLL CALL: Krista Hunt, aye; Chris Stein, aye; Gene Taylor, aye; Dennis Morrison, aye; Jo Ann Rigano, aye.

Motion carried 5-0

XI. ANNOUNCEMENTS

- A. October 23, 2020, End of Grading Period-Early Dismissal
- B. November 3, 2020, Election Day
- C. November 19, 2020, Board of Education Meeting 6:30 p.m.
- D. November 23-27, 2020, No School/Thanksgiving Break
- E. November 26 & 27, 2020, All Offices Closed

XII. BOARD MEMBER COMMENTS

- A. Ms. Hunt – Shared that she knew the announcement given for blended learning was tough on the community. She spoke of her hope that this would only be for two weeks. She thanked the teachers in advance for the extra preparation to help students stay on task and stay on schedule on the days they are working from home. Thank you to the parents. This plan was already in place at the beginning of the year in the event of being needed.
- B. Mr. Taylor – Spoke of the GCCC and what a gem it is in Greene County for the offerings for careers. It has expanded the avionics and robotics offerings. They too are facing changes in their schedule. He spoke of the importance of surveys.
- C. Mr. Stein – He shared his positive experience with early voting and encouraged others to do the same. He thanked everyone for the presentation of the climate survey and shared that he thought it was good information. The data stresses the importance of this information. He appreciates sharing with himself and the community what the survey is all about.
- D. Ms. Rigano – She thanked everyone for their hard work. She spoke of students being first at Beavercreek City Schools. She spoke of the importance of information to ensure meeting the needs of the students. She thanked everyone for the hard work done for the first 8 weeks. Happy Halloween.
- E. Mr. Morrison – Thanked everyone for the presentation. Expressed his wish for everyone to stay safe. Good luck to all athletic team out there competing. He shared the get out and vote message.

XIII. ADJOURNMENT

There being no further business, Mr. Morrison moved to adjourn the meeting at 7:31 p.m. Ms. Hunt seconded the motion.

ROLL CALL: Dennis Morrison, aye; Krista Hunt, aye; Chris Stein, aye; Gene Taylor, aye; Jo Ann Rigano, aye.

Motion carried 5-0

We do hereby certify the above to be correct.

PRESIDENT

TREASURER