

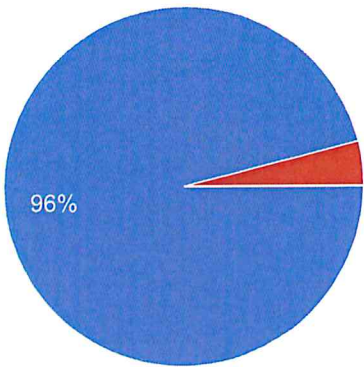
HHS CTE Survey

125 responses

[Publish analytics](#)

I am a:

125 responses



- HHS Student
- HHS Staff Member

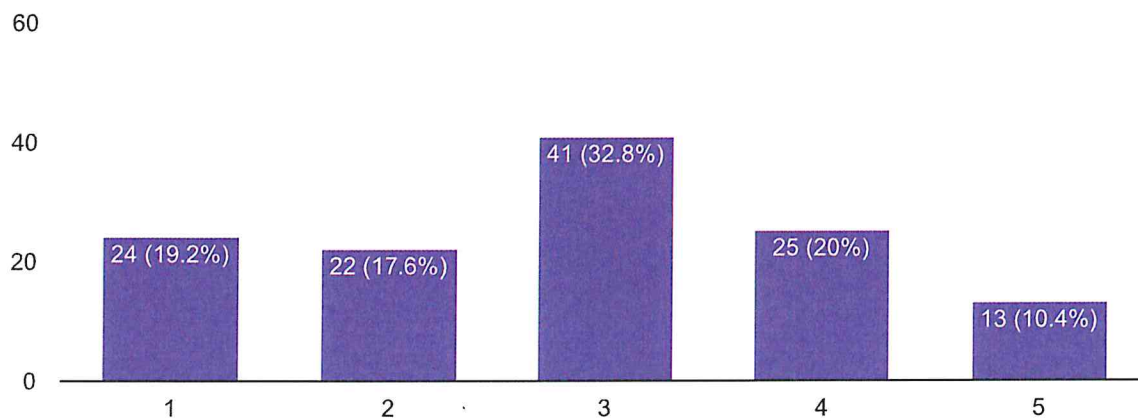


Agriculture, Food, and Natural Resources Systems

Classes could focus on:

- *The environment
- *Food Production and Manufacture (not cooking/serving)
- *Natural resources, including:
 - *Agriculture
 - *Earth sciences
 - *Environmental sciences
 - *Fisheries management
 - *Forestry
 - *Horticulture
 - *Water resources
 - *Wildlife management
 - *Urban environmental management.

125 responses



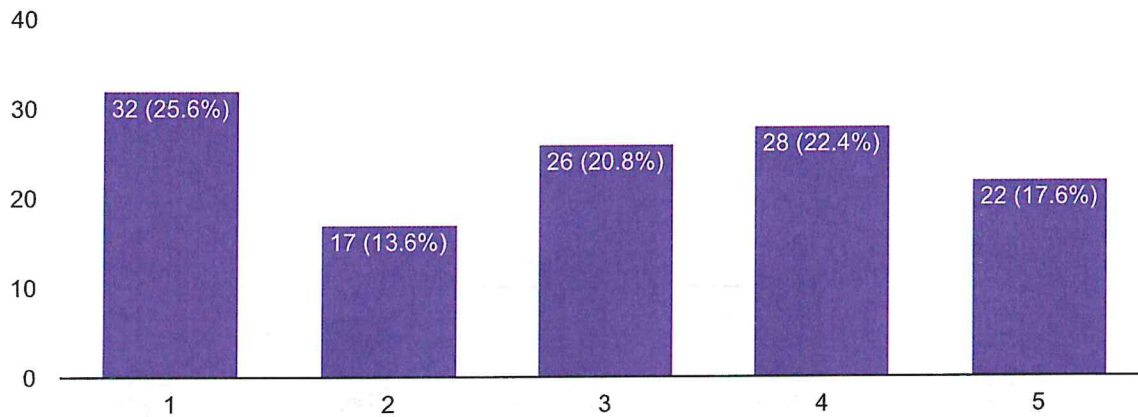


Arts, Information and Communications

Classes could focus on:

- *Arts (painting, ceramics, music, theater)
- *Audio/video technology
- *Digital design
- *Computer programming and coding
- *Communications

125 responses





Business and Management

Classes could focus on:

*Business and entrepreneurial needs, including:

*Personnel management

*Marketing

*Planning

*Finance

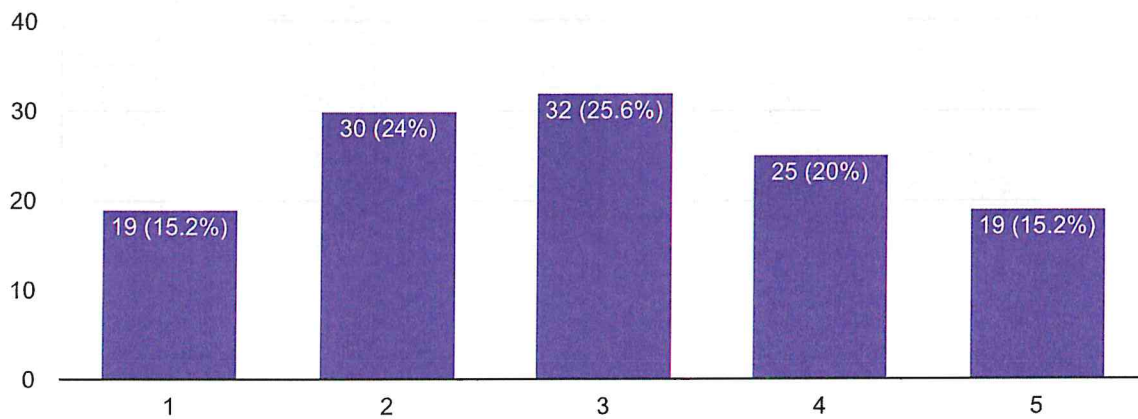
*Resource management

*Hospitality

*Culinary (cooking and serving)

*Tourism

125 responses



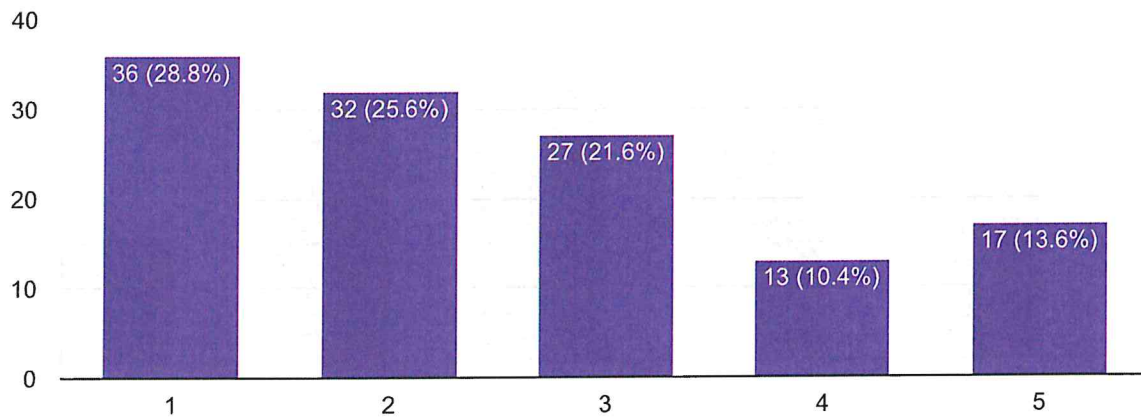


Health Sciences

Classes could focus on:

- *Biotechnology research and development
- *Diagnostic services
- *Health informatics
- *Support services
- *Therapeutic services.

125 responses

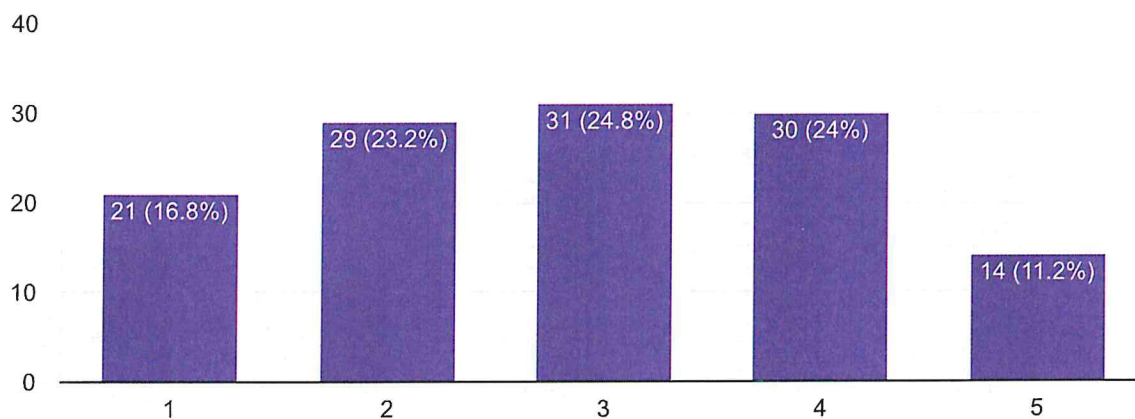


Human Resources

Classes could focus on:

- *Education
- *Child development
- *Fire and safety
- *Corrections
- *Law and government
- *National security

125 responses





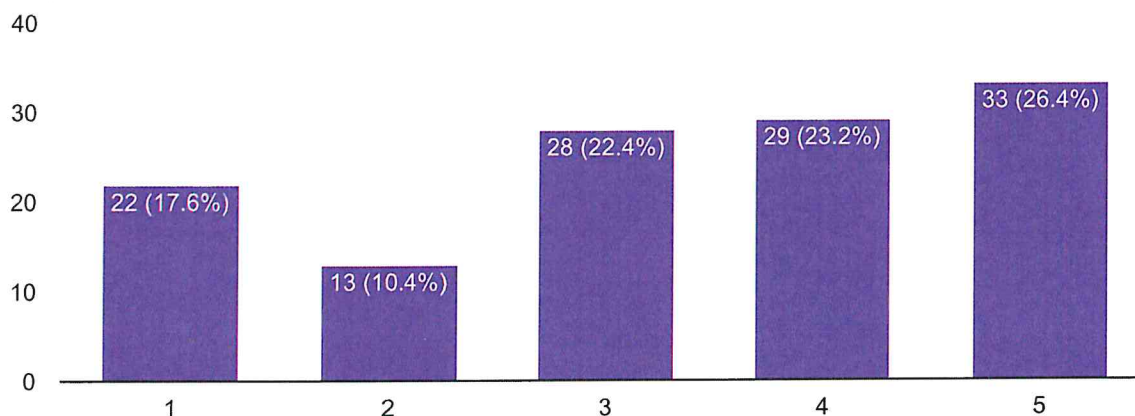
Industrial and Engineering Systems

Classes could focus on:

*Technologies used to design, develop, install, operate, maintain, and upgrade physical systems. These can include:

- *Engineering
- *Mechanical systems
- *Manufacturing technologies
- *Precision production
- *Construction
- *Electrical systems
- *Electronics and information technologies.

125 responses



This content is neither created nor endorsed by Google. [Report Abuse](#) - [Terms of Service](#) - [Privacy Policy](#)

Google Forms



