

Harrisburg Middle School

Weekly Announcements

November 28, 2022



THIS WEEK

Monday, November 28

- Breakfast- Cereal
- Lunch- Chicken Patty Sandwich
- Study Hall 3:36-4:15
- **Girls Basketball at Lowell. Dismiss @ 2:45pm**

Tuesday, November 29

- Breakfast- Pancakes w/ Syrup
- Lunch- Toasted Cheese Sandwich
- Study Hall 3:36-4:15
- **Girls Basketball at Home. Game starts @ 4:30pm**

Wednesday, November 30

- Breakfast-Sausage, Egg & Cheese Scramble
- Lunch- Fish Po' Boy Sandwich
- Study Hall 3:36-4:15

Thursday, December 1

- Breakfast- Blueberry Muffin
- Lunch- Beef Lasagna
- Study Hall 3:36-4:15
- **OSU Girls Basketball Field Trip**

After School Study Hall

Students are invited to stop by the study hall room after school to receive help with school work. Please contact Mrs. Suttles with any questions.

cindy.suttles@harrisburg.k12.or.us

Monday 3:36-4:15

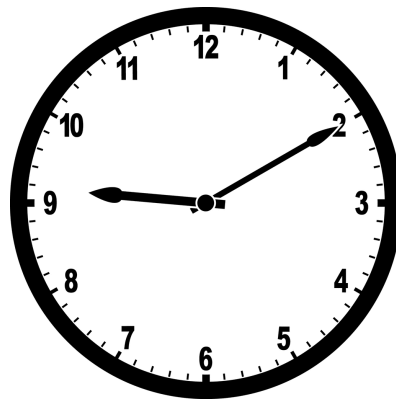
Tuesday 3:36- 4:15

Wednesday 3:36-4:15

Thursday 3:36-4:15

Late Start - 1 hour

Friendly reminder we don't start school until 9:10 on Monday's! This is our school improvement time for teachers and staff. Thank you!



Front Office

If parents need to check out their student(s) early for appointments, please check in with the front office and make sure to fill out the clipboard at the front desk. If students arrive late due to an appointment or family emergency, please call or check in with the front office to excuse the absence. **Students are expected to be at school on time and for the remainder of the school day unless otherwise excused.** Please call for any questions: 541-995-6551

Water Bottles

Please send your student(s) to school with a water bottle. It's important to stay hydrated throughout the day, especially during warmer weather. There is a water station where students can refill their water bottle.

Bus Information

5th-8th graders are not allowed to ride the bus unless they live more than a mile and half away from the district (ORS.327.043) or if they live across Hwy 99 which is considered a danger zone. Thank you for understanding. For any questions please contact Amy Traw in transportation.



Campus Safety

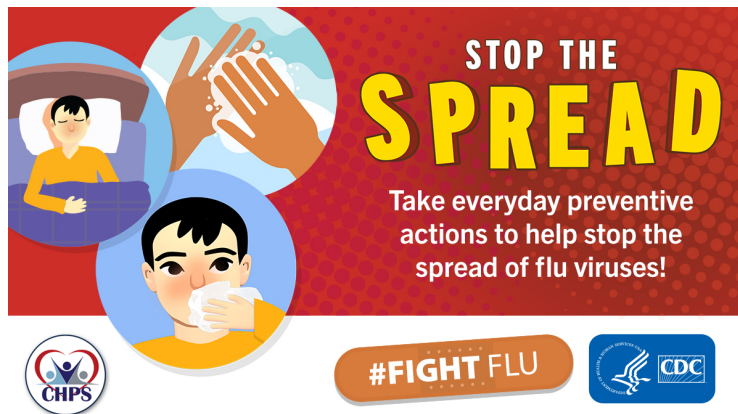
Due to safety concerns, **students should NOT be on campus after school** unless otherwise arranged with the school. If your student is not involved in an after school activity they should not be on campus without supervision.

Drinks

Please do NOT send students to school with Dutch Bros, Starbucks or Energy Drinks. As per our school rule, such drinks will have to be thrown away before a student goes to class. Students can have energy drinks ONLY in the cafeteria at lunch. Also, please remind students once they arrive at school in the mornings on our campus we expect them to stay on campus. Thank you!

Health

Encourage students to wash their hands, get plenty of rest and promote healthy habits! **Keep students at home if they are experiencing a fever, severe headache, cough, sore throat, diarrhea, vomiting or difficulty breathing.** They can turn to school once symptoms are gone.



Oregon State Girls Basketball Field Trip Information

When: Thursday, December 1st

Where: Oregon State University

Time: 9:00-3:15 approximately

Expectations: This is an eligibility field trip. Students are not eligible to go if they are:

- Failing classes
- One or more major referral
- 2 or more unexcused tardies/absences during Q2

They are required to still be at school and will be in a study hall type class. Students at the field trip are expected to follow all directions by staff and Oregon State workers.



Thank you!

Winter Sports

Boys Basketball (7/8th grade), Girls Basketball (7/8th grade) and Wrestling (5th-8th grade) are now open for enrollment! Please register ASAP.

How to register:

Registration is done online through FamilyID. Using a computer is preferable over a cellphone. Please go here: <https://hello.familyid.com/>

*Click the high school when registering then please select **22/23 Winter Athletics Middle School**

Sports fee \$100. Payment or a payment schedule needs to be made by the first game.

Students will be ineligible to participate/play if:

- No physical on file
- Failing classes
- No payment/payment plan in place
- 30 minutes tardy to first period (unexcused)

If a student is 30 minutes or more late to first period, then that student may not participate in that day's athletic events. If your student has a doctor/dentist appointment, a physicians' note is required in order for absences to be excused. If a student is not well enough to come to school, then it will be determined that they are not well enough to participate in that day's sporting events.

Girls Basketball: Practice is after school in HMS gym from 4:00-5:30pm

Wrestling: Practice is in the high school wrestling room from 6:30-8:00pm

Boys Basketball: Practice is TBD

Earn Extra Cash...
Harrisburg School District

Substitute Assignments

- Teacher
- Educational Assistant
- Student Support Assistant
- Custodian
- Food Service
- Bus Driver

<https://harrisburgor.sites.thrillshare.com/page/employment-new>

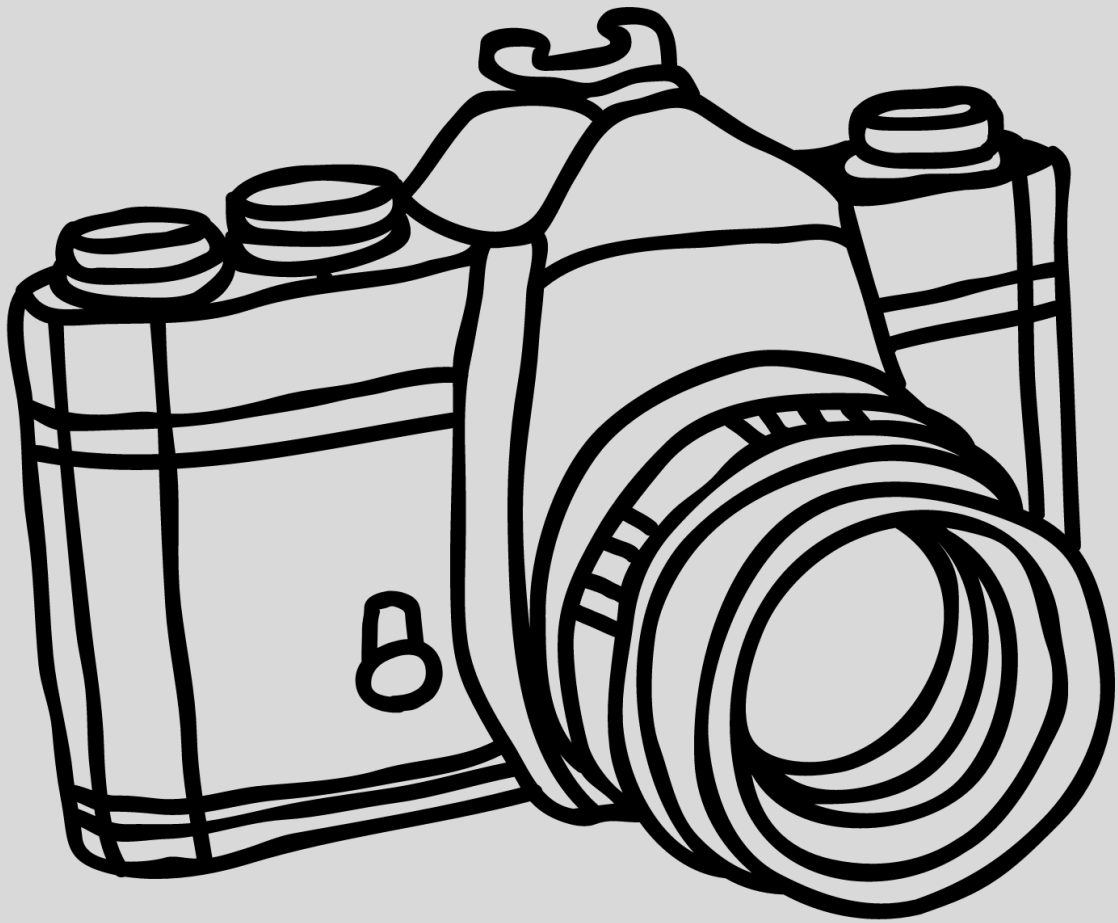
For more information, please contact Tia Bodine in Human Resources

District Office Hours: 8:00am -4:30pm Monday- Thursday

865 La Salle Street | Harrisburg, Oregon, 97446 | 541-995-6626

Substitutes needed in all areas- Tell a friend!

PICTURE RETAKES



Tuesday, December 6, 2022



3-6 Grade Basketball

\$65

Practices start mid-December

Games begin mid-January

Visit:

<https://eagleathletics.sportngin.com>

click "REGISTER"

Registration Closes: 12/2 at 9:00 PM

late registrations will not be accepted



3-6 Grade Basketball

\$65

Practices start mid-December

Games begin mid-January

Visit:

<https://eagleathletics.sportngin.com>

click "REGISTER"

Registration Closes 12/2 at 9:00 PM

late registrations will not be accepted



HARRISBURG PTA



Willamette Valley Pie Co.



REMAINDER OF PIES DELIVERY
DAY!

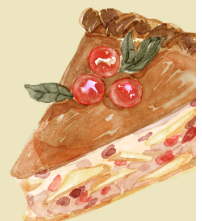


Tuesday November 29th from
2:30pm-5:30pm

Pick up location: Harrisburg
Christian Church

Questions email

harrisburgoregonpta@gmail.com



Future Events

- December 1- OSU Girls Basketball Game Field Trip
 - December 3- Light Parade
 - December 6- Picture Retakes
 - December 8- HS/MS Band Veneta Light Parade
 - December 12- Regular Board Meeting
 - December 14- Band Concert
 - December 19-January 3- Winter Break NO SCHOOL
 - January 9- Regular Board Meeting
 - January 16- MLK Day- NO SCHOOL
-

Helpful links

- <https://www.harrisburg.k12.or.us/> - Harrisburg school district webpage
- <https://www.harrisburg.k12.or.us/o/hms> - Harrisburg middle school webpage
- <https://www.harrisburg.k12.or.us/o/harrisburg/page/pinnacle-parent-login>
-Pinnacle login
- <https://or-harrisburg.intouchrecepting.com/> - Online payment portal
- <https://www.mymealtime.com/> - Lunch accounts
- <https://www.linncountyhealth.org> - Linn County Department of Health Services - Resources for Youth
- <https://sites.google.com/harrisburg.k12.or.us/harrisburghighschoolcollegeand> - Harrisburg High School Career Center

Have a great week!

