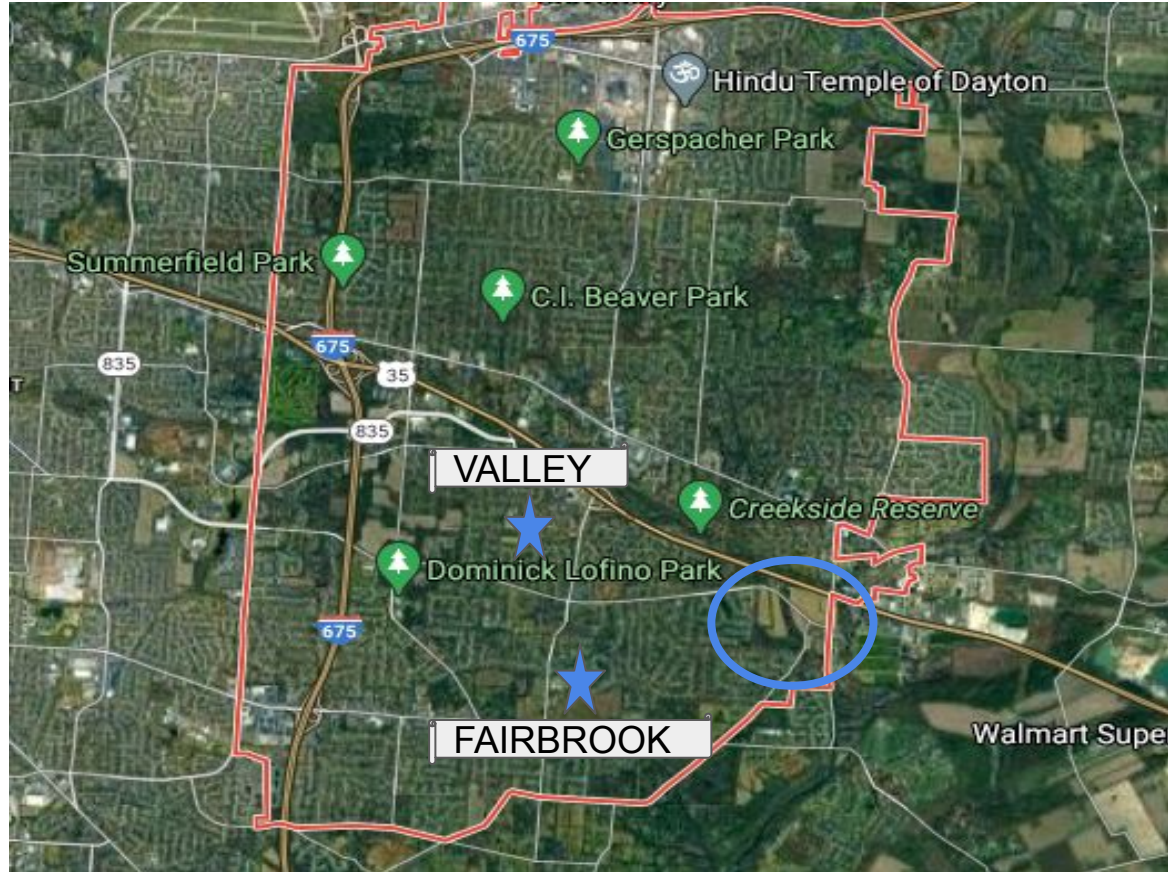




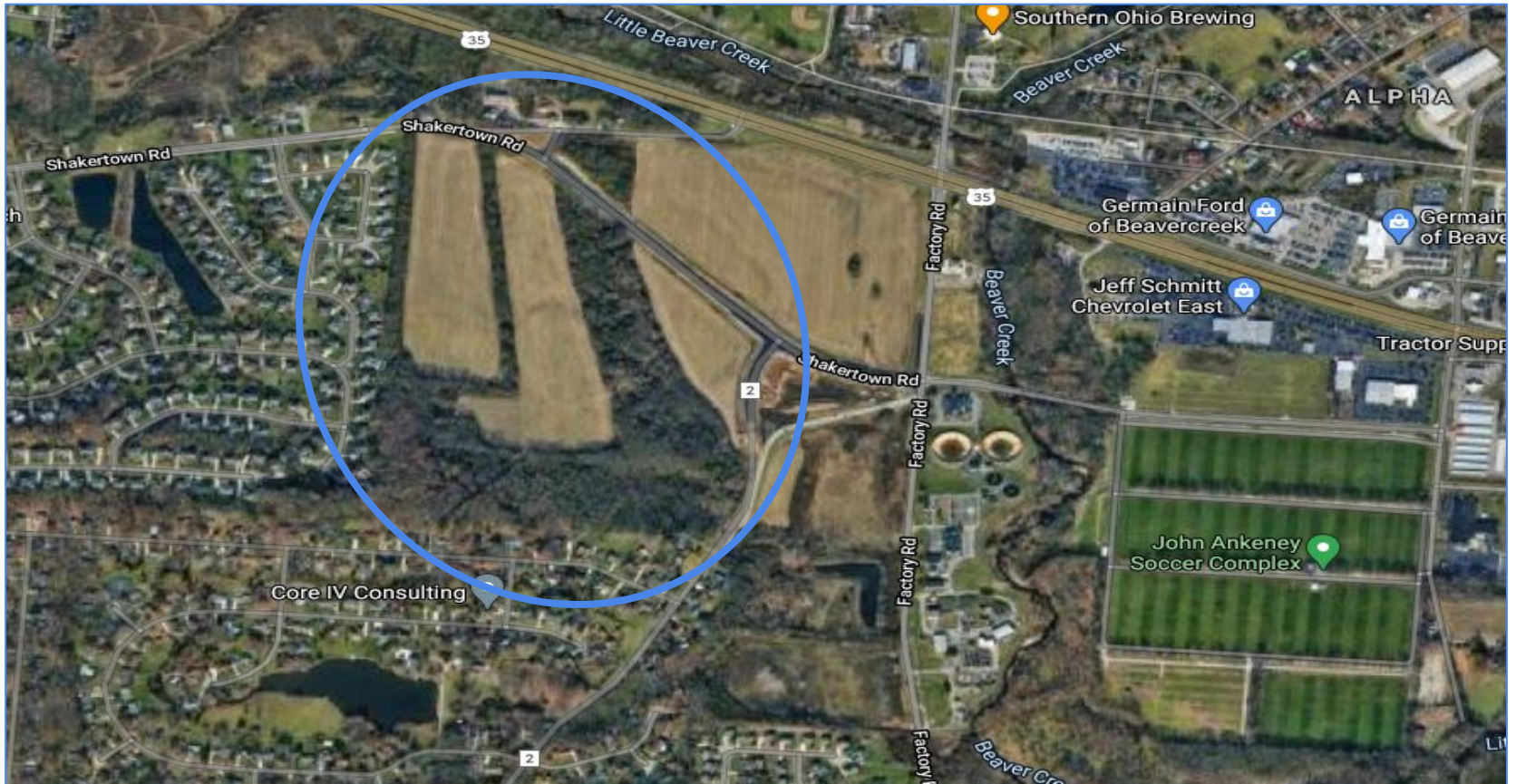
# **Attendance Boundaries and New Housing Development**

April 15, 2021

# Proposed Future Development



# Proposed Future Development



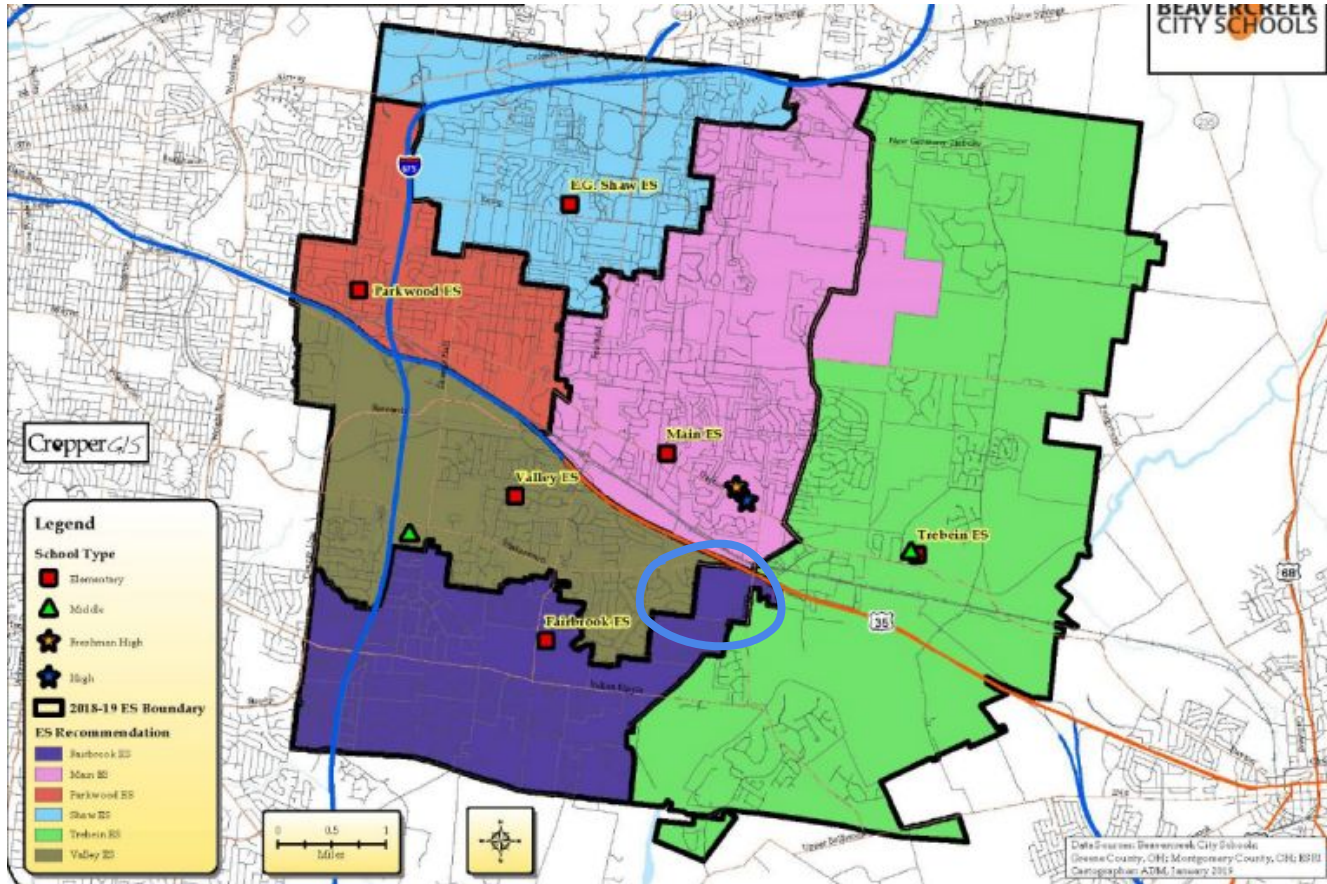


# Proposed Future Development

- New single family development
- Currently in Planning and Zoning Process with the City of Beavercreek
- 146 new homesites



# Elementary Attendance Boundaries





# Building Capacity compared to Current Enrollment

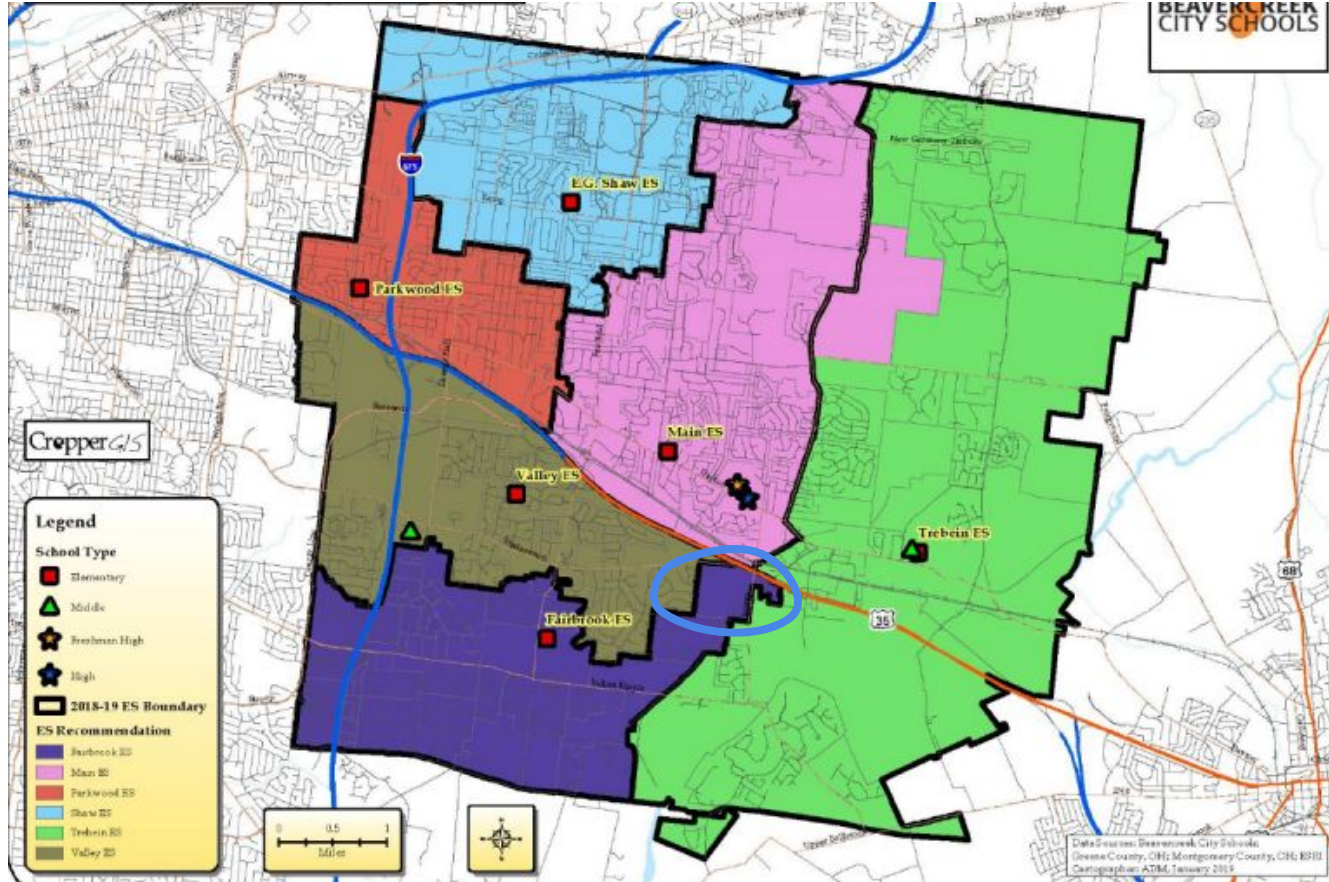
	FAIRBROOK	VALLEY
Capacity	520	541
Current Enrollment (4/5/21)	559	472
+ Over / - Under	+39	-69



# Possible Adjustment

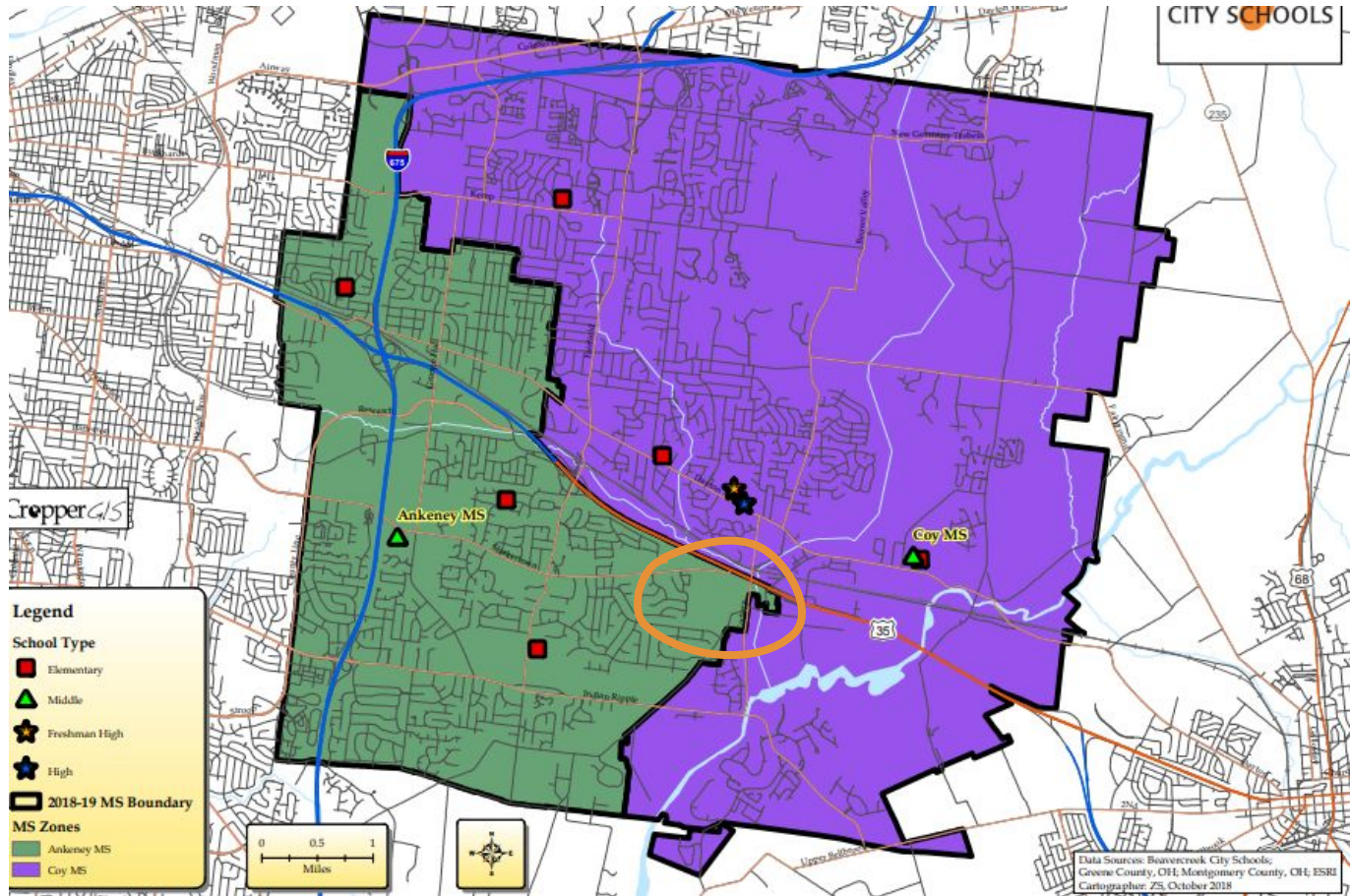
- Move Planning Block #328 from Fairbrook's attendance area to Valley's attendance area
  - Would currently impact zero households
- Middle School attendance assignment would remain the same
  - Ankeney MS

# Possible Adjustment





# Middle School Attendance Boundaries





# Benefits

- Proactive to new development
- No change in school assignments for currently enrolled students
- Reduces the impacts of overcrowding at Fairbrook
  - Student Achievement
  - Safety
  - Financial Impact



# Discussion and Questions?